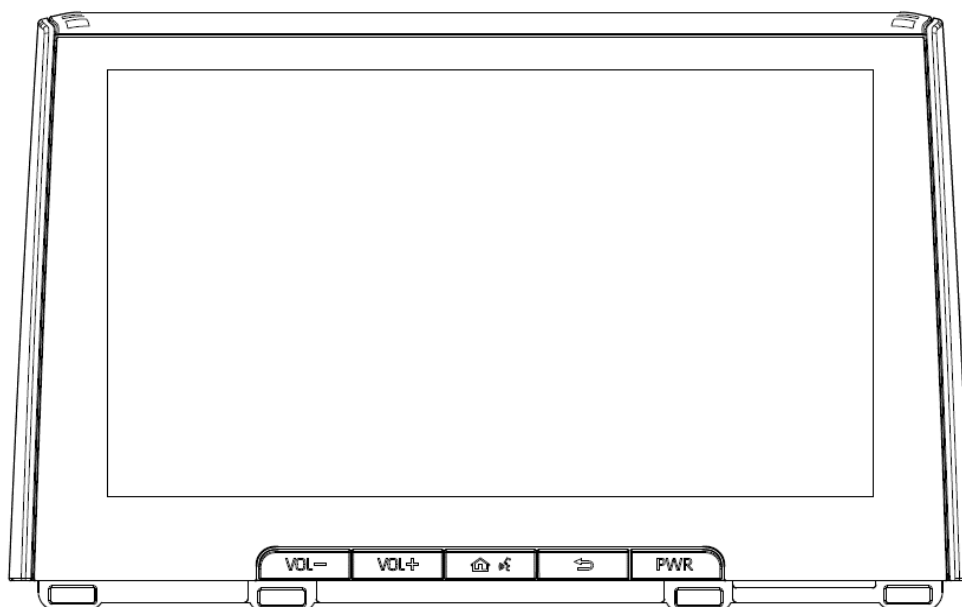


TN0036B

Operation Manual



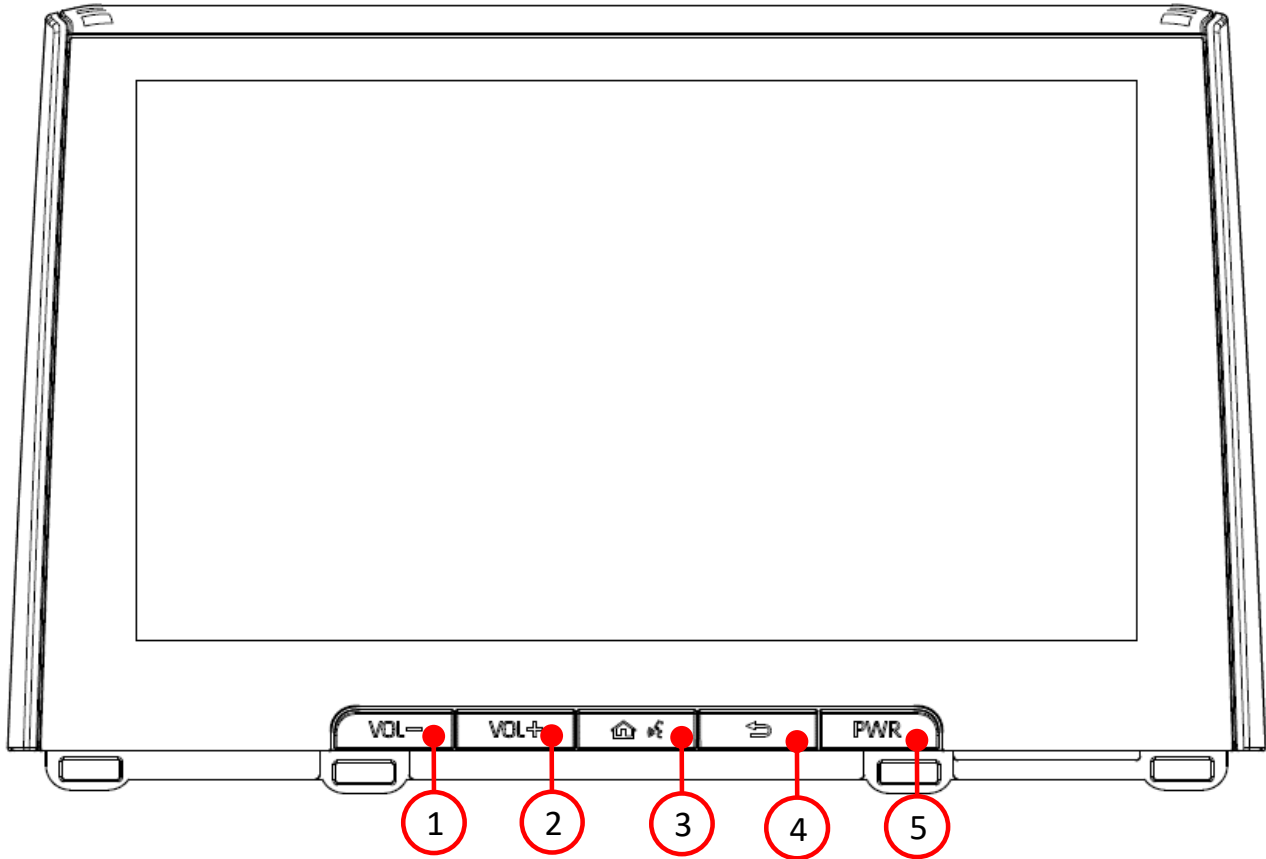
| | |
|------------|-----------|
| Model name | Car Audio |
| Model No | TN0036B |

| Index | Page |
|--|------|
| 1-Rating | 2P |
| 2-Button Function Spec | 3P |
| 3-Radio operation procedure | 4P |
| 4-Operating manual (Bluetooth/Handsfree) | 5P |
| 5-Operating manual (Wi-Fi/Carplay) | 6P |
| 6-FCC Operating manual Requirement | 7P |

1-Rating

| | |
|-----------------|---|
| RATED VOLTAGE | 12V (10.5~16.0V) – ground |
| LOAD IMPEDANCE | 4 Ω |
| BACK UP CURRENT | 2.1mA or less |
| RATED CURRENT | 4.0A or less (V _{cc} =13.2V, 0.5W output) |
| AM TUNING RANGE | 531 – 1602 kHz (9kHz step) |
| FM TUNING RANGE | 87.5 – 108 MHz (50kHz step) |

2-Button Function Spec



■AUDIO controls

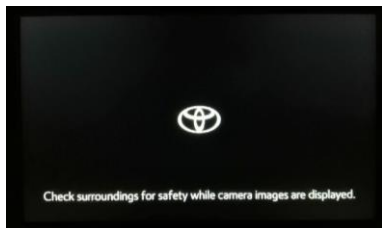
| Button No. | Button Name | Operation |
|------------|-------------|---|
| ① | VOL DOWN | Short Push: Decrease Volume Down 1 step Long Push: Decrease Volume Down continuously |
| ② | VOL UP | Short Push: Increase Volume Up 1 step Long Push: Increase Volume Up continuously |
| ③ | HOME/TALK | Short Push: Transition to home screen Long Push: AA/CP voice recognition |
| ④ | BACK | Transition to previous screen |
| ⑤ | POWER | Audio ON/OFF |

3-Radio operation procedure

【操作手順】[Operation procedure]

①起動 (ACC-ON)

ACC-ON後、TOYOTA画面が表示された事を確認。
After the ACC-ON, confirm that Toyota screen is displayed.



②数秒後に“CAUTION”画面に移ります。

The screen is changed to “CAUTION” screen after a few seconds.

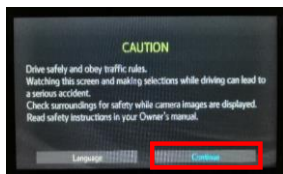
*初回のACC-ON時はやや時間を要します。

Note: It takes a little longer for the first time of ACC-ON.



③数秒後に“Continue”ボタンを押して、MENU画面に移させます。

Press the “Continue” button on the face panel after a few seconds to move MENU screen.



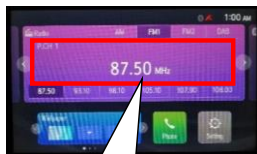
Menu Screen Display

④POWERボタンを押す。

画面内のラジオモードウィンドウを押すと、“FM1”画面に移ります。

Press the POWER button.

When the Radio Mode Window on the screen is pressed, “FM1” screen is displayed.



Press anywhere in this area

⑤下記画面に移したら、“<” 釦 若しくは、“>” 釦を押下してください。

これで、SEEKが始まります。

Confirm that the screen is changed as below,

Please push down the “<” button or “>” button.

This will start to SEEK.



Push this button

※AM/DABモードも同様の手順です。

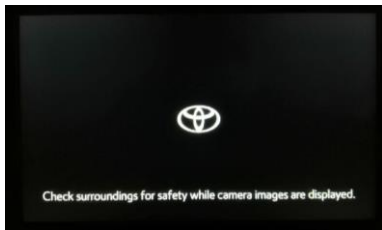
※Same as AM/DAB mode.

4-Operating manual (Bluetooth/Handsfree)

【操作手順】[Operation procedure]

① 起動 (ACC-ON)

ACC-ON後、TOYOTA画が表示された事を確認。
After the ACC-ON, confirm that Toyota screen is displayed.



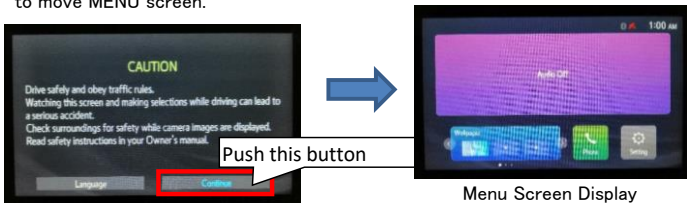
② 数秒後に“CAUTION”画面に移ります。

The screen is changed to “CAUTION” screen after a few seconds.
*初回のACC-ON時はやや時間を要します。
Note: It takes a little longer for the first time of ACC-ON.



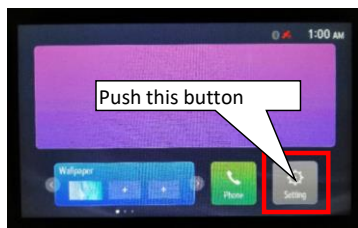
③ 数秒後に“Continue”ボタンを押して、MENU画面に移させます。

Press the “Continue” button on the face panel after a few seconds to move MENU screen.



④ “Setting”ボタンを押して、SETTINGS画面に移させます。

Please press the “Setting” button on the face panel to move to Settings screen



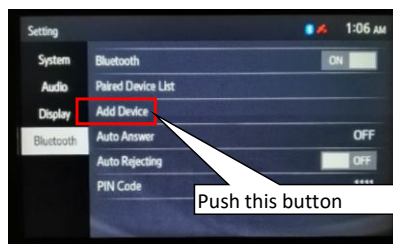
⑤ “Settings”画面に移移することを確認し、画面上の“Bluetooth”鈕を選択。

Confirm if “Settings” screen is displayed, select the “Bluetooth” button on the display.



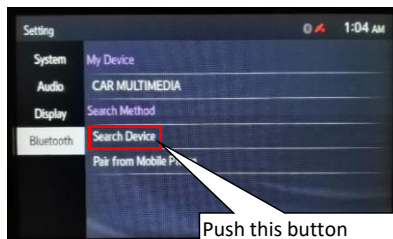
⑥ 画面の“Add Device”鈕を押下してください。

Please press the “Add Device” button of the screen



⑦ 画面の“Search Device”鈕を押下してください。

Please press the “Search Device” button of the screen



⑧ 下記画面に移移したらBluetooth端末 (iPhone、iPodなど)をペアリングモードに設定してください。

Confirm if screen is changed as below,
Please set iPhone or iPod in pairing mode.



※Displays when you have more than one pairing equipment
※複数のペアリング機器がある場合の表示

⑨ 接続したiPhone又はiPodを選択します。

Select the iPhone or iPod to connect.



※ 電話機の表示にしたがって操作してください

※ Operate the phone after the message on the screen

⑩ 完了すれば“Connection Completed”の画面になります。

“Connection Completed” is displayed if completed.

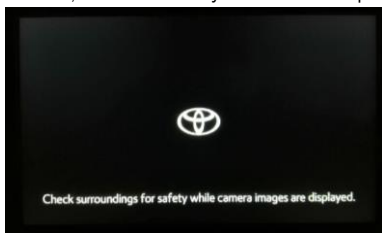


5-Operating manual (Wi-Fi/Carplay)

【操作手順】[Operation procedure]

① 起動 (ACC-ON)

ACC-ON後、TOYOTA画が表示された事を確認。
After the ACC-ON, confirm that Toyota screen is displayed.



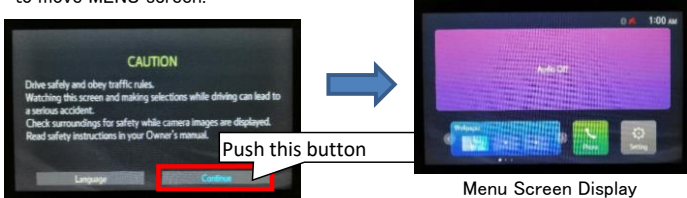
② 数秒後に“CAUTION”画面に遷移します。

The screen is changed to “CAUTION” screen after a few seconds.
*初回のACC-ON時はやや時間を要します。
Note: It takes a little longer for the first time of ACC-ON.



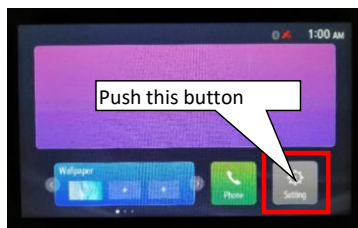
③ 数秒後に“Continue”ボタンを押して、MENU画面に遷移させます。

Press the “Continue” button on the face panel after a few seconds to move MENU screen.



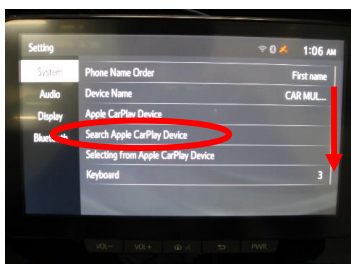
④ “Setting”ボタンを押して、SETTINGS画面に遷移させます。

Please press the “Setting” button on the face panel to move to Settings screen



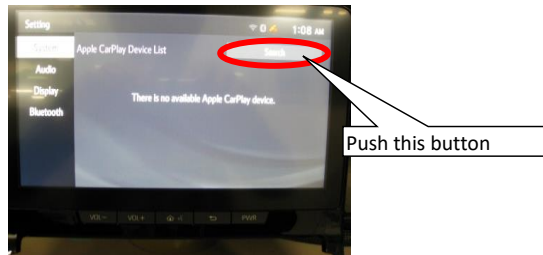
⑤ “Settings”画面に遷移することを確認し、下にスライドし画面上の

“Search Apple CarPlay Device” 鈕を選択。
Confirm that the screen will change to the “Settings” screen, slide it down and select the “Search Apple CarPlay Device” button on the screen.



⑥ 画面の“Search” 鈕を押下してください。

(この時接続させるiPhoneでBluetooth ONにしておく)
Please press the “Search” button of the screen
At this time, turn on Bluetooth on the iPhone to be connected.



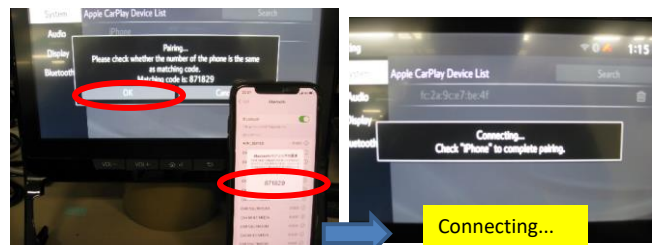
⑦ 接続したiPhoneを選択する

Please Select the connected iPhone.



⑧ 下記のような表示になれば、製品側は[OK]ボタンを押しiPhone側は [ペアリング] を押す。

If the display looks like the one below, press the [OK] button on the product side and press [Pairing] on the iPhone side.



⑨ 自動でCarPlay画面に遷移すれば接続完了

Connection is completed when the screen automatically transitions to the CarPlay screen.



5-FCC Operating manual Requirement

Co-location: This transmitter must not be co-located or operated in conjunction with any other antenna or transmitter.

This device complies with part 15 of the FCC Rules. Operation is subject to the following two conditions: (1) This device may not cause harmful interference, and (2) this device must accept any interference received, including interference that may cause undesired operation.

FCC WARNING

Changes or modifications not expressly approved by the party responsible for compliance could void the user's authority to operate the equipment.

CAUTION: Radio Frequency Radiation Exposure

This equipment complies with FCC radiation exposure limits set forth for uncontrolled equipment and meets the FCC radio frequency (RF) Exposure Guidelines. This equipment should be installed and operated keeping the radiator at least 20cm or more away from person's body.