

Instruction manual

Model No

TN0022A

Contents

	Page
1-Rating / Button Function Spec	P. 2
2-Bluetooth connection	P. 3
3-Wireless LAN connection	P. 4
4-Radio operation procedure	P. 5
5-Description requirement	P. 6

1-Rating / Button Function Spec

RATED VOLTAGE	12V
LOAD IMPEDANCE	4Ω
BACK UP CURRENT	2.1mA or less
RATED CURRENT	8.60A
AM TUNING RANGE	530kHz - 1710kHz (10kHz step)
FM TUNING RANGE	87.75MHz - 107.90MHz (200 kHz step)
Sirus/XM TUNING RANGE	2320MHz - 2345MHz
Operating temperature	-30 to +65°C



No.	Button Name	Operation
①	PWR · VOL knob	Turn Left : Volume down
		Short Push : Audio Power ON/OFF Long Push : System RESET
		Turn right : Volume up

Satellite SW

Front side



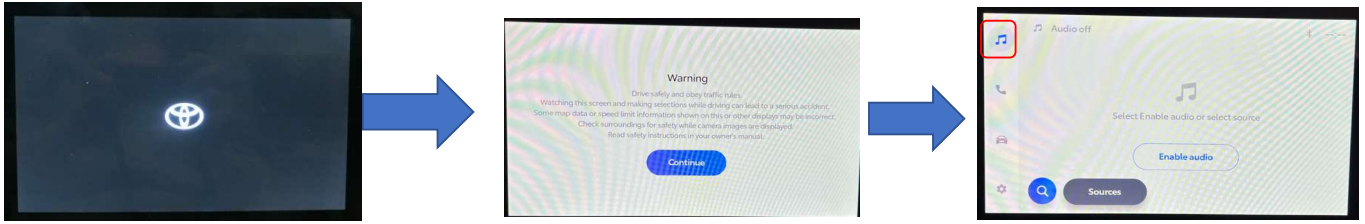
Lateral side



2-Bluetooth connection

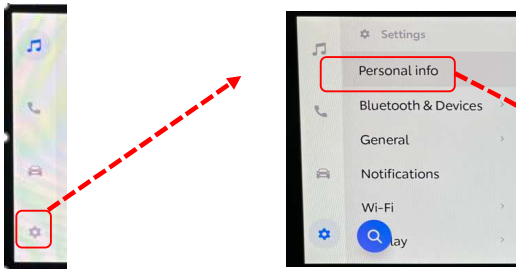
①After powering on with ACC-ON, the following screen will start on the display.

Continue→ Please select in this order.



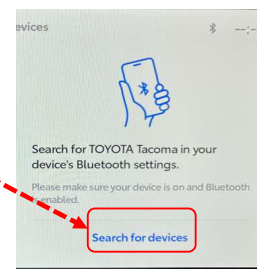
②From the menu bar, press ⚙

Press "Bluetooth & Device" after transition.



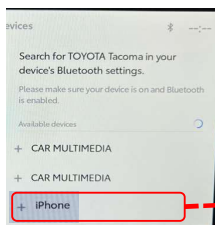
③It transitions to the "Bluetooth & Device" screen.

Press "Search for devices".



④Select and press the device you want to connect to.

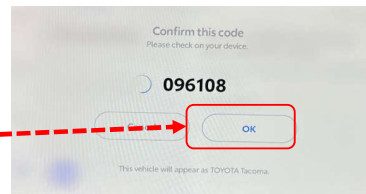
※This document connects to "iPhone".



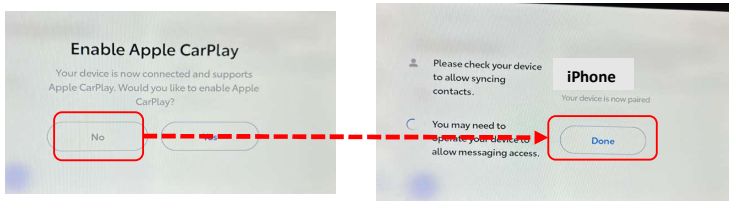
⑤It will transition to the confirmation code confirmation screen.

Check for matches with the code displayed on the device side and allow pairing.

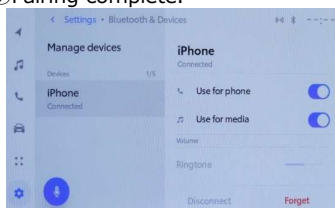
※The name of the device is set to "TOYOTA Tacoma".



⑥Start the connection.



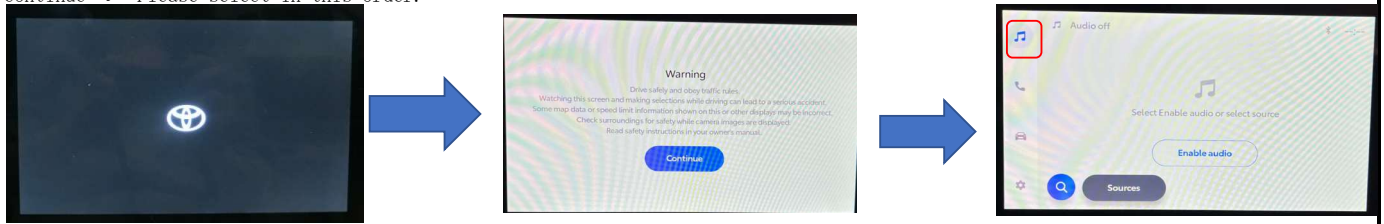
⑦Pairing complete.



3-Wireless LAN connection

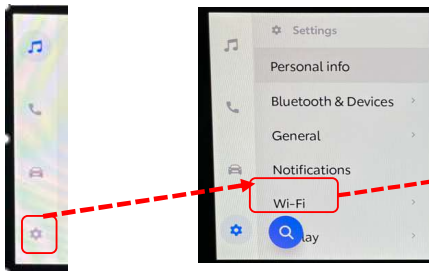
①After powering on with ACC-ON, the following screen will start on the display.

Continue→ Please select in this order.

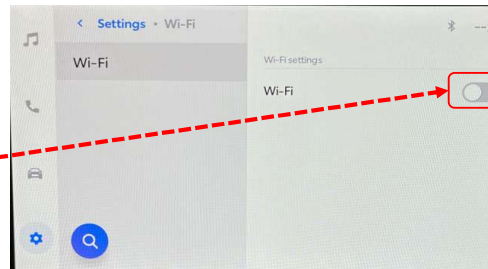


②From the menu bar, press ⚙

Press "Date & Wi-Fi" after transition.

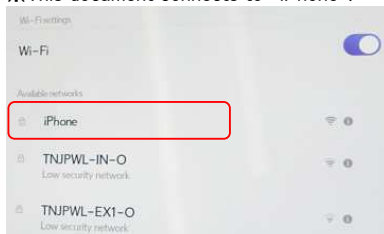


③Turn on "Wi-Fi".

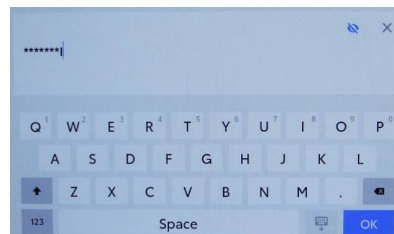


④Select and press the Wi-Fi you want to connect to.

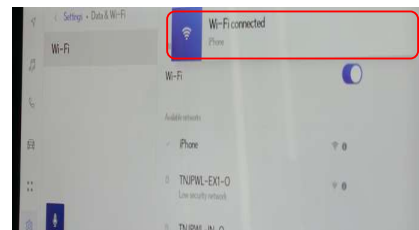
※This document connects to "iPhone".



⑤Enter your password.

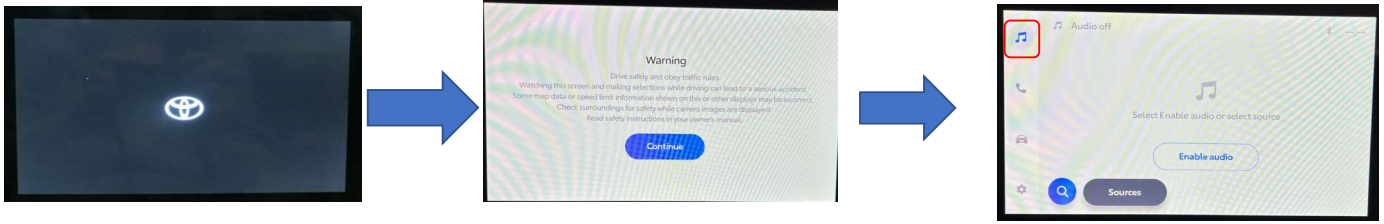


⑥Start the connection. The setting is complete.



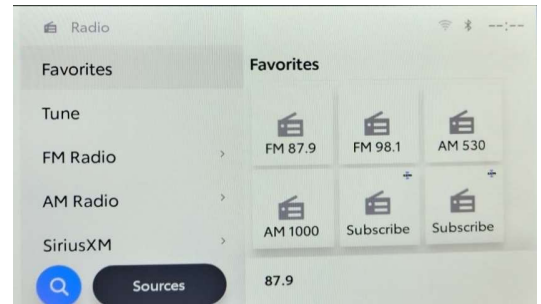
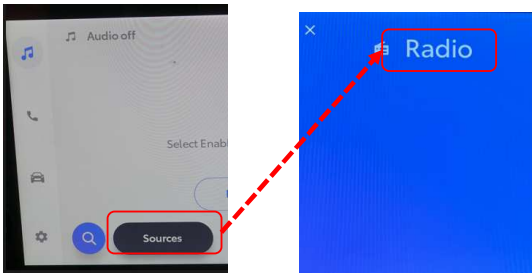
4-Radio operation procedure

①After powering on with ACC-ON, the following screen will start on the display.
Continue→ Please select in this order.

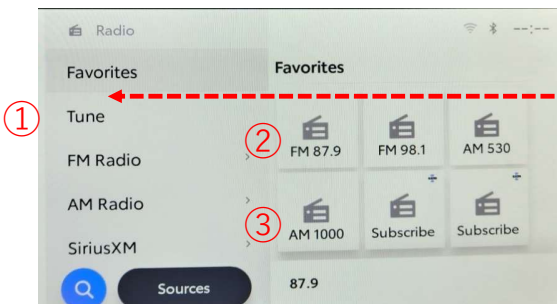


②From the menu bar, press "Sources"
Press "Radio" after transition.

③Transit to Radio menu.

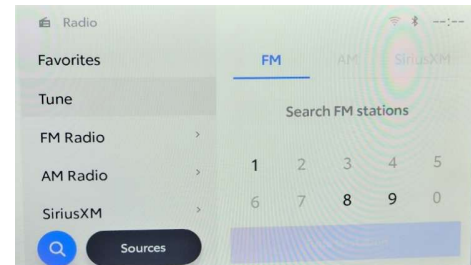


Feature Description

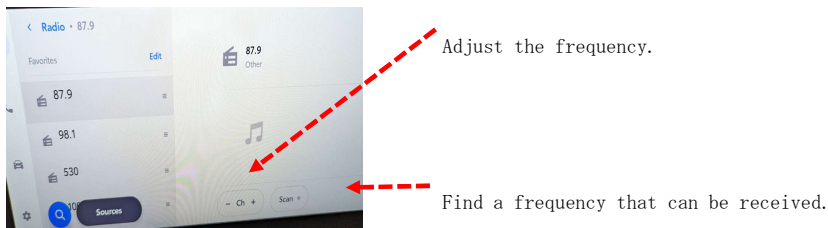


①Tune

Any frequency can be set.



②,③ FM Radio/AM Radio
Screen and the transition and press the either.



5-Description requirement

①FCC

FCC ID : BABTN0022A

FCC CAUTION

CAUTION: Radio Frequency Radiation Exposure

This equipment complies with FCC radiation exposure limits set forth for an uncontrolled environment and meets the FCC radio frequency (RF) Exposure Guidelines. This equipment should be installed and operated keeping the radiator at least 20cm or more away from person's body in normal use position.

Co-location: This transmitter must not be co-located or operated in conjunction with any other antenna or transmitter.

This device complies with part 15 of the FCC Rules. Operation is subject to the following two conditions: (1) This device may not cause harmful interference, and (2) this device must accept any interference received, including interference that may cause undesired operation.

FCC WARNING

Changes or modifications not expressly approved by the party responsible for compliance could void the user's authority to operate the equipment.

②ISED

IC : 2024B-TN0022A

This device contains licence-exempt transmitter(s)/receiver(s) that comply with Innovation, Science and Economic Development Canada's licence-exempt RSS(s).

(1) This device may not cause interference; and

(2) This device must accept any interference, including interference that may cause undesired operation of the device.

CAUTION: Radio Frequency Radiation Exposure

This equipment complies with ISED radiation exposure limits set forth for an uncontrolled environment and meets RSS-102 of the ISED radio frequency (RF) Exposure rules.

This equipment should be installed and operated keeping the radiator at least 20cm or more away from person's body.

L'émetteur/récepteur exempt de licence contenu dans le présent appareil est conforme aux CNR d'Innovation, Sciences et Développement économique Canada applicables aux appareils radio exempts de licence.

L'exploitation est autorisée aux deux conditions suivantes :

(1) l'appareil ne doit pas produire de brouillage;

(2) l'utilisateur de l'appareil doit accepter tout brouillage radioélectrique subi, même si le brouillage est susceptible d'en compromettre le fonctionnement.

ATTENTION: l'exposition aux rayonnements radiofréquence

- Cet équipement est conforme aux limites d'exposition aux rayonnements énoncées pour un environnement non contrôlé et respecte les règles d'exposition aux fréquences radioélectriques (RF) CNR-102 de l'ISDE.

Cet équipement doit être installé et utilisé en gardant une distance de 20 cm ou plus entre le radiateur et le corps humain.