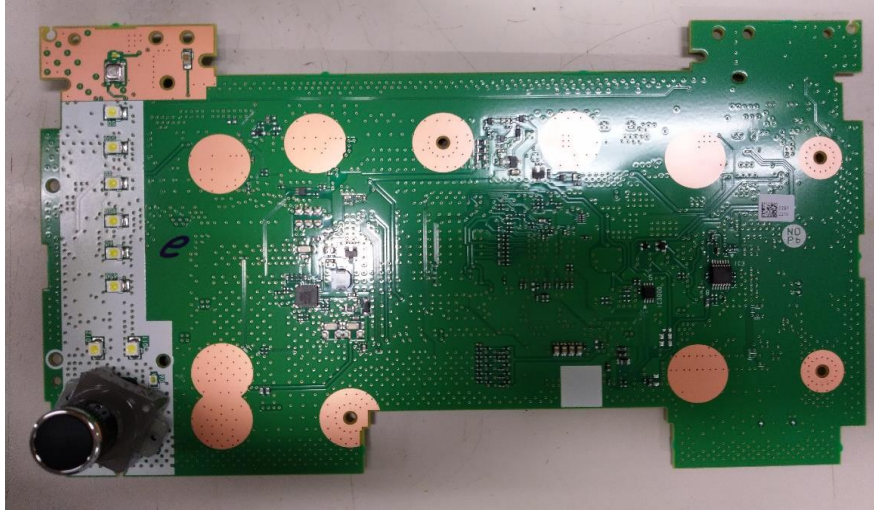
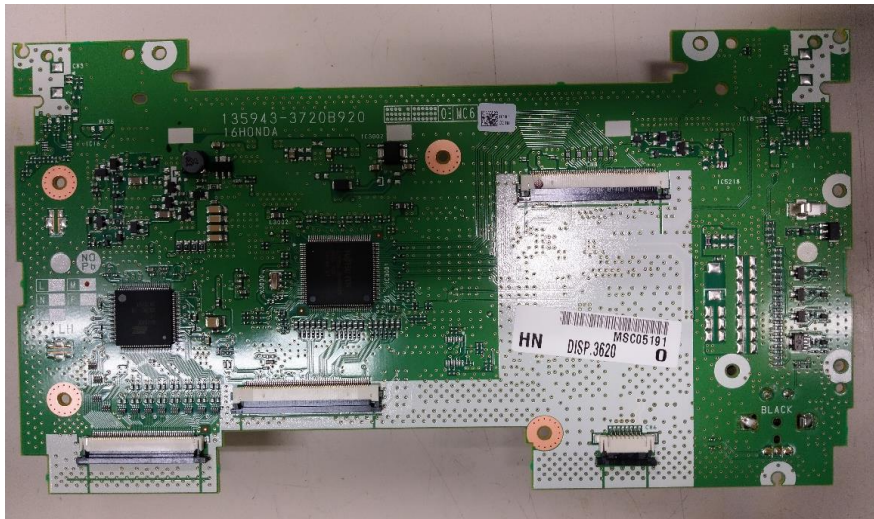


## Internal Photo

### DISP\_PCB

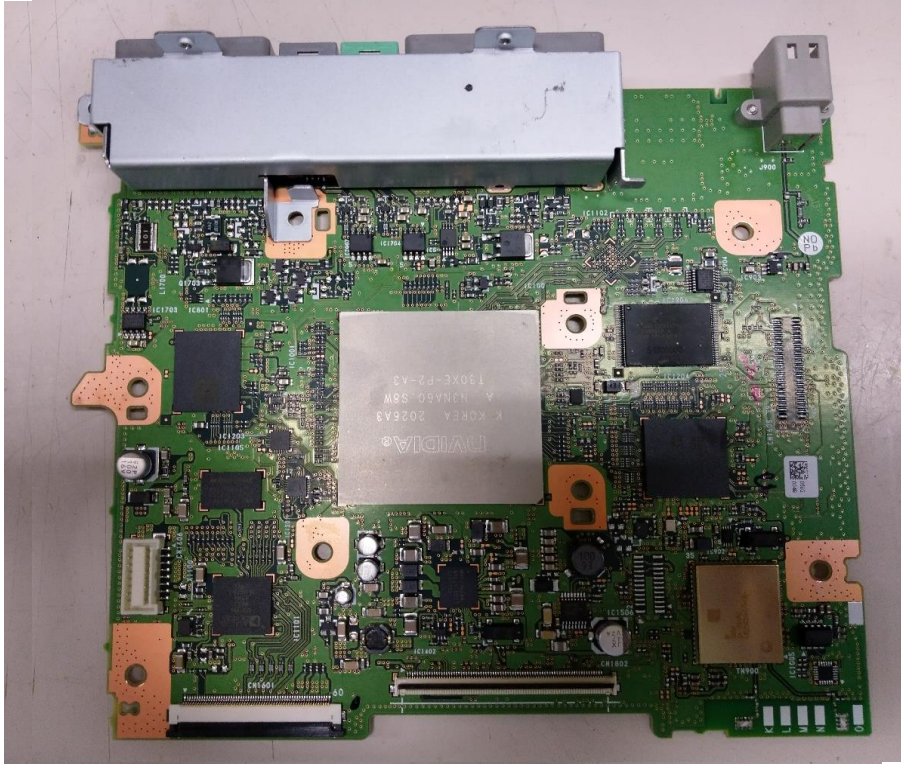


## Rear View

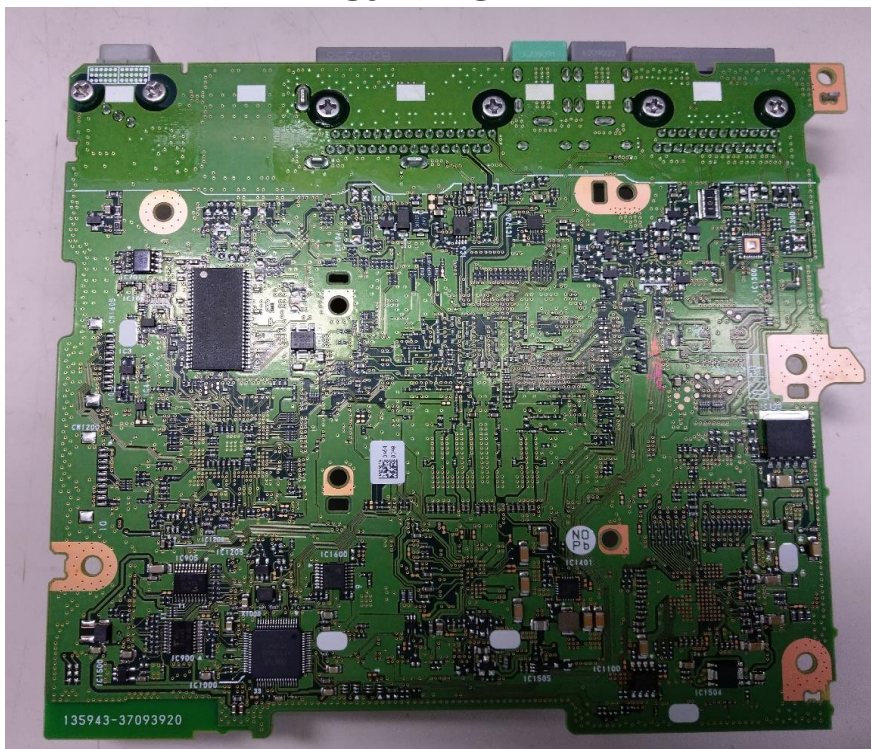


# Internal Photo

## CPU PCB

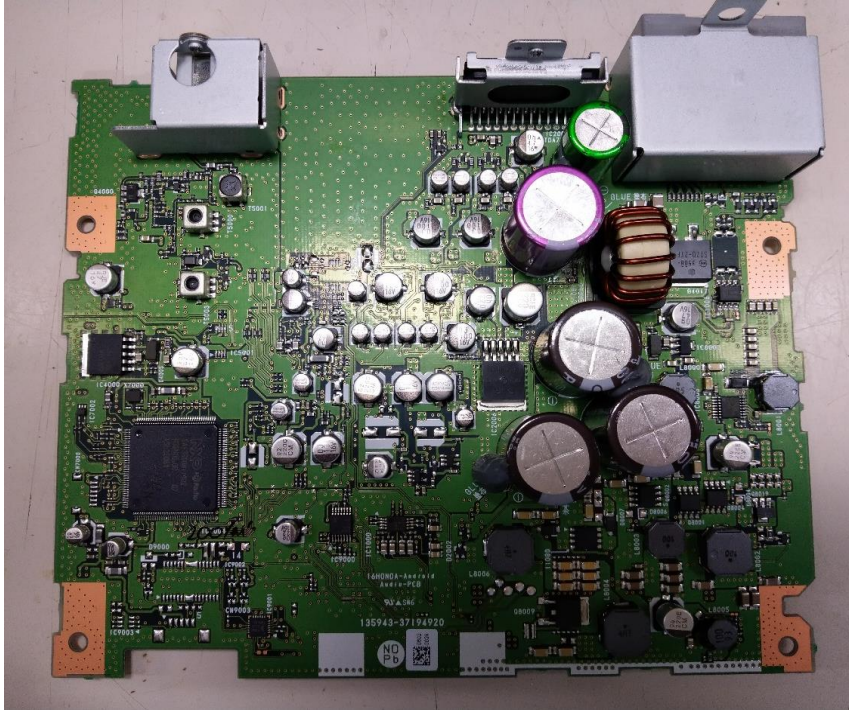


## Rear View

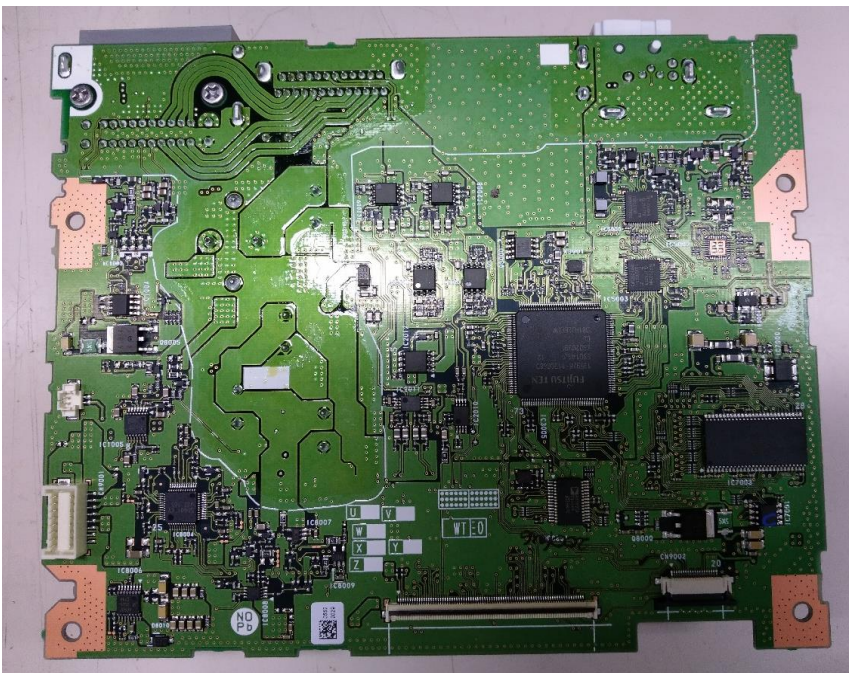


# Internal Photo

## AUDIO\_PCB



## Rear View

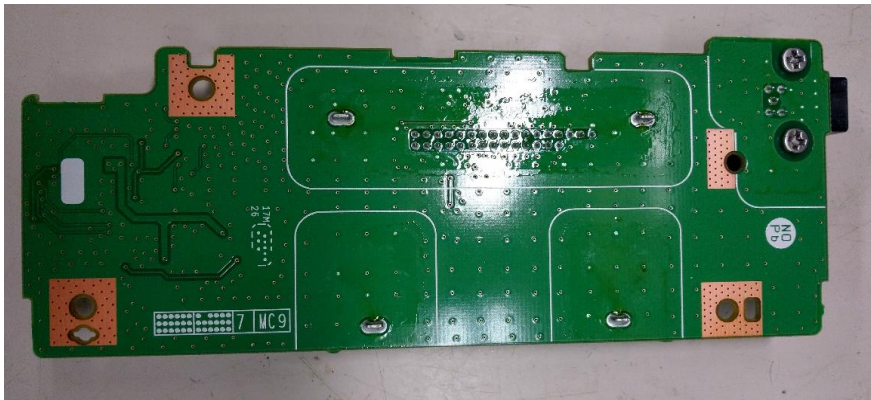


# Internal Photo

## XM\_PCB

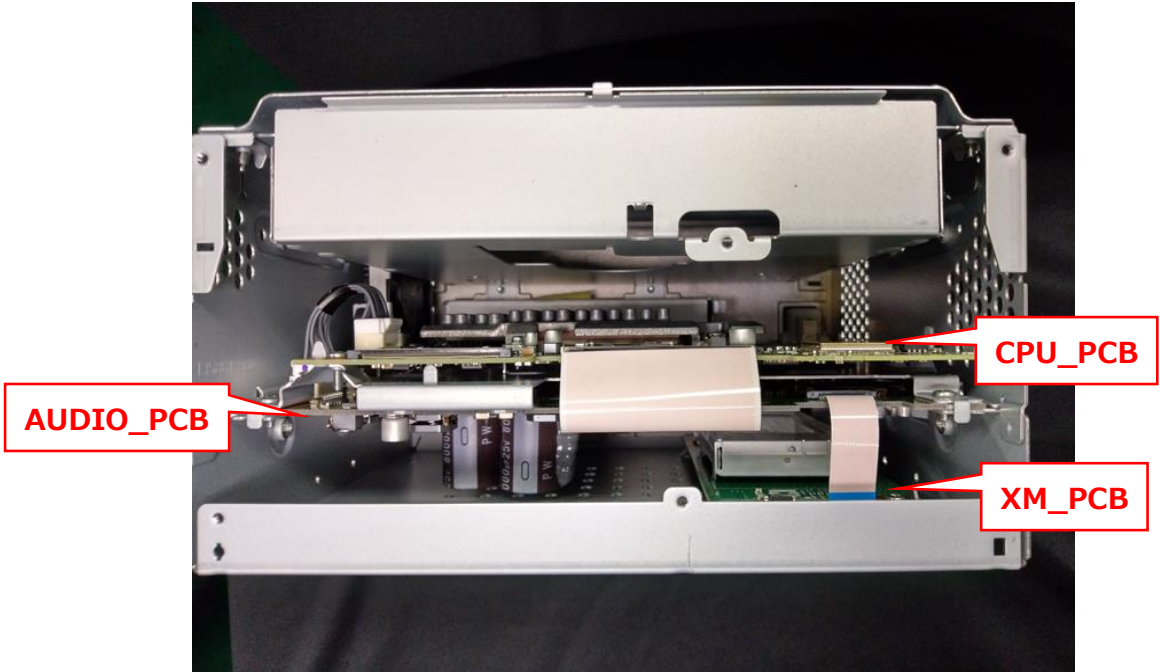


## Rear View



# Internal Photo

## Inside the product (Front View)



## Display Unit (Rear View)

