

6

5

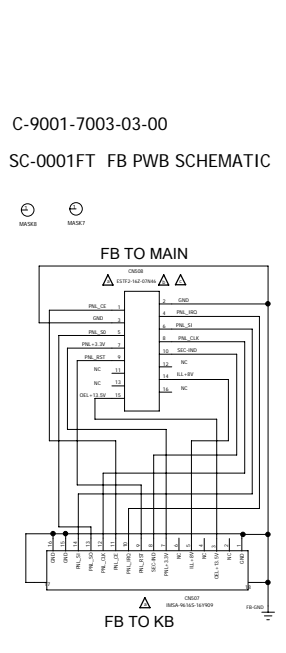
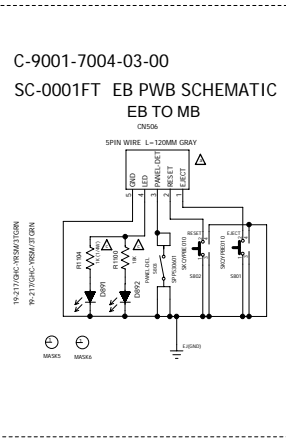
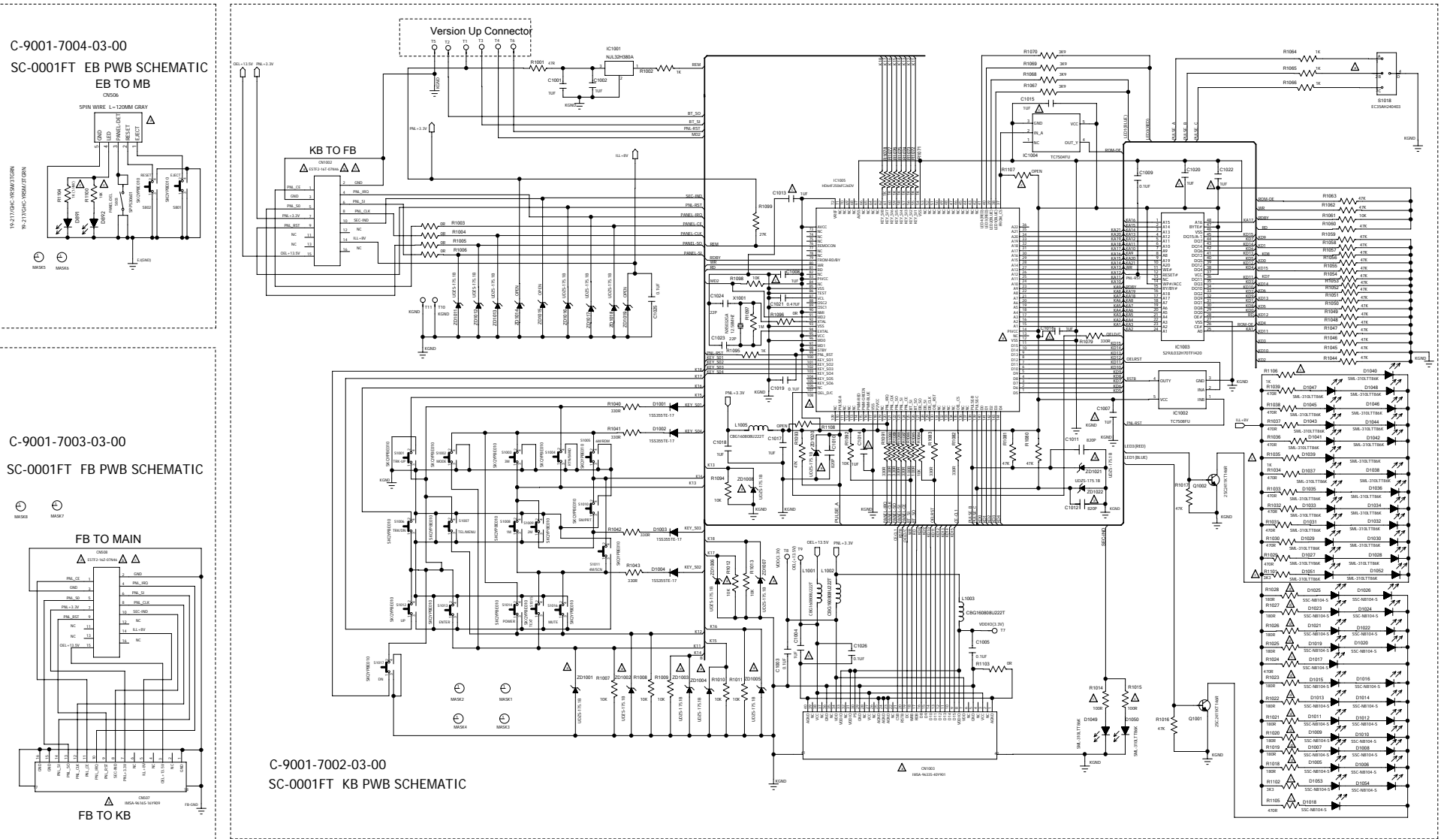
4

3

2

1

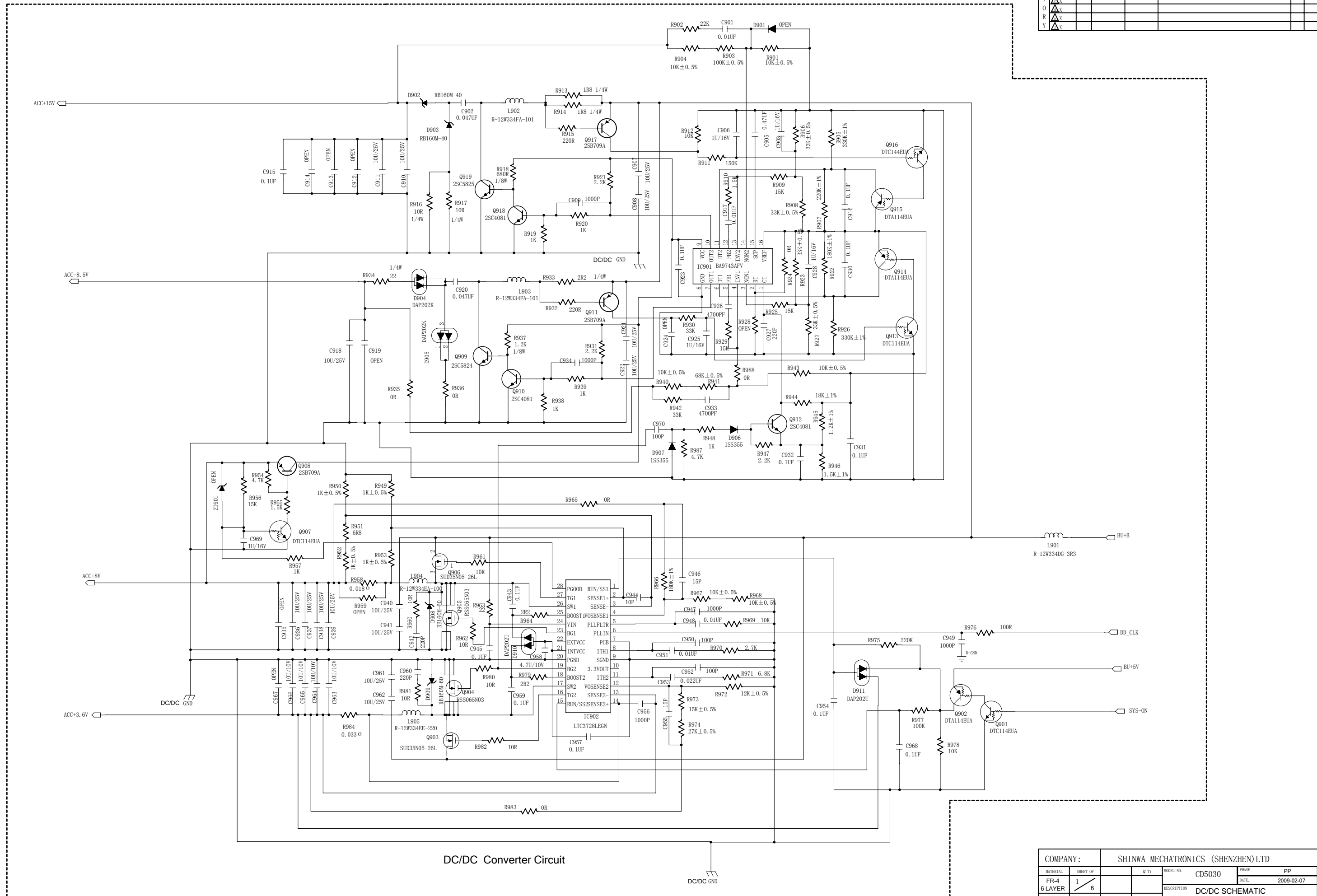
REV	DATE	REV NO.	ZONE	USER
1	2008-11-14			
2	2008-12-05			
3	2009-02-23			
4	2009-02-23			



**C-9001-7002-03-00**  
**SC-0001FT KB PWB SCHEMATIC**

COMPANY:		SHINWA MECHATRONICS (SHENZHEN) LTD	
REV	DATE	REV NO.	ZONE
1	2008-11-14		
2	2008-12-05		
3	2009-02-23		
4	2009-02-23		

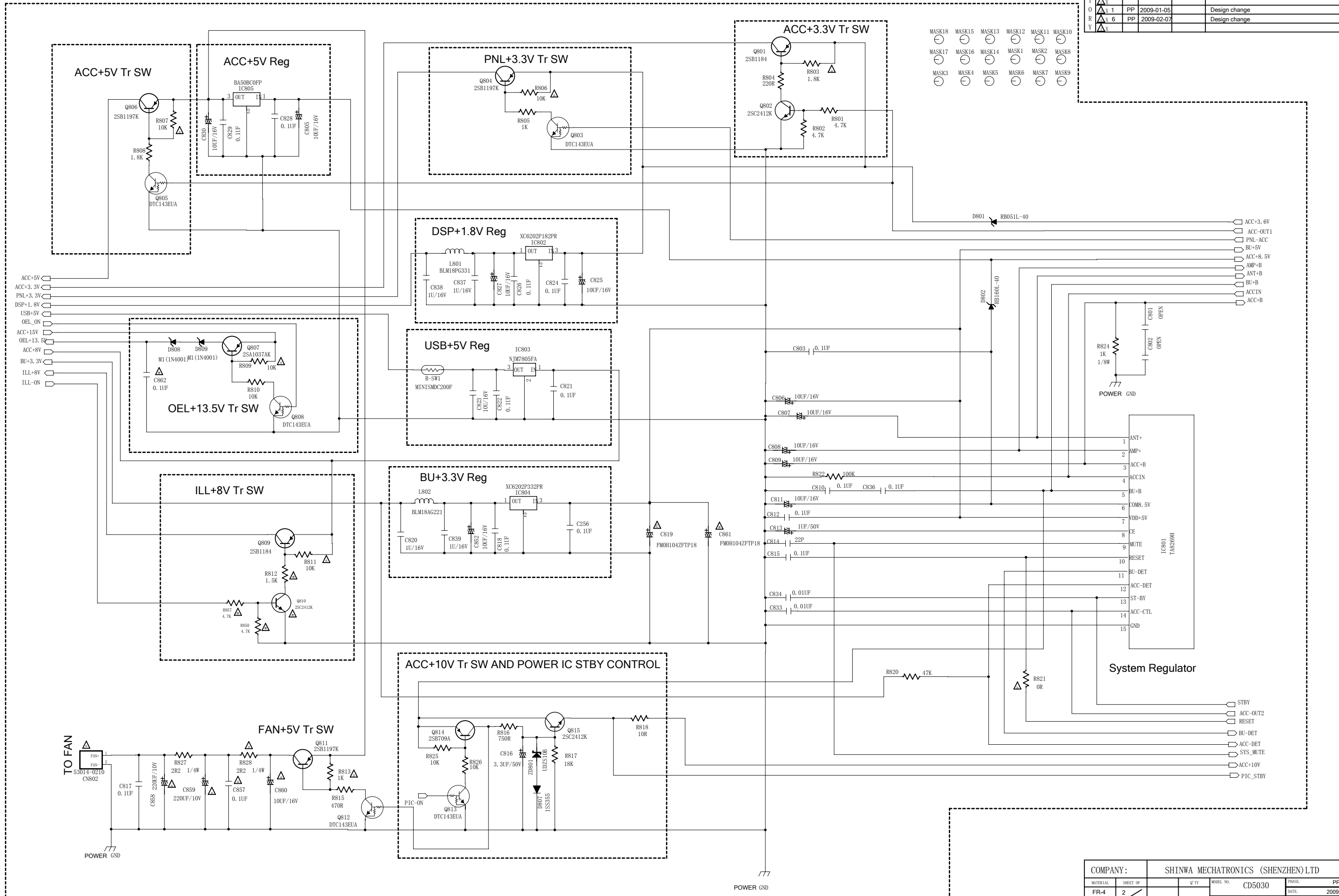
H	SYMBOL	REV.	DATE	REF. NO.	ZONE, ITEMS	CHK	EGR



DC/DC Converter Circuit

COMPANY:		SHINWA MECHATRONICS (SHENZHEN)LTD			
MATERIAL:	SHEET OF:	Q'TY	WAVE NO.	PHASE	PP
FR-4	1		CD5030		
6 LAYER	6			DATE:	2009-02-07
PLANNED BY:	DRAWN BY:	INSPECTED BY:	APPROVED BY:	DESCRIPTION DC/DC SCHEMATIC	
				TOOL CODE	
				CODE NO.	C-9001-7001-03-00

H	SYMBOL	REV.	DATE	REF NO.	ZONE, ITEMS	CHG	EGR
X	13	2M	2008-11-14		Design change		
X	1	1G	2008-12-10		Design change		
X	1	PP	2009-01-05		Design change		
X	6	PP	2009-02-07		Design change		



MASK18	MASK15	MASK13	MASK12	MASK11	MASK10
MASK17	MASK16	MASK14	MASK1	MASK2	MASK8
MASK3	MASK4	MASK5	MASK6	MASK7	MASK9

- ACC+3.6V
- ACC-OUT1
- PNL-ACC
- BU+5V
- ACC+8.5V
- AMP+B
- ANT+B
- BU+B
- ACCIN
- ACC+B

- 1 ANT+
- 2 AMP+
- 3 ACC+B
- 4 ACCIN
- 5 BU+B
- 6 COMB. 5V
- 7 VDD+5V
- 8 CE
- 9 MUTE
- 10 RESET
- 11 BU-DET
- 12 ACC-DET
- 13 ST-BY
- 14 ACC-CTL
- 15 GND

- STBY
- ACC-OUT2
- RESET
- BU-DET
- ACC-DET
- SYS\_MUTE
- ACC+10V
- PIC\_STBY

COMPANY:		SHINWA MECHATRONICS (SHENZHEN) LTD				
MATERIAL	SHEET OF	QTY	MODEL NO.	CD5030	PHASE	PP
FR-4	2	6	DATE	2009-02-07		
DESCRIPTION			POWER SUPPLY SCHEMATIC			
PLANNED BY	DRAWN BY	INSPECTED BY	APPROVED BY	TOOL CODE		
CODE NO.			C-9001-7001-03-00			

REV.	DATE	REF. NO.	ZONE, ITEMS	CHG.	EGR.
X 25	2M	2008-11-14	Design change		
X 2	2M	2008-12-4	Design change		
X 3	1G	2008-12-10	Design change		
X 7	PP	2009-01-05	Design change		
X 9	PP	2009-01-31	Design change		

D

C

B

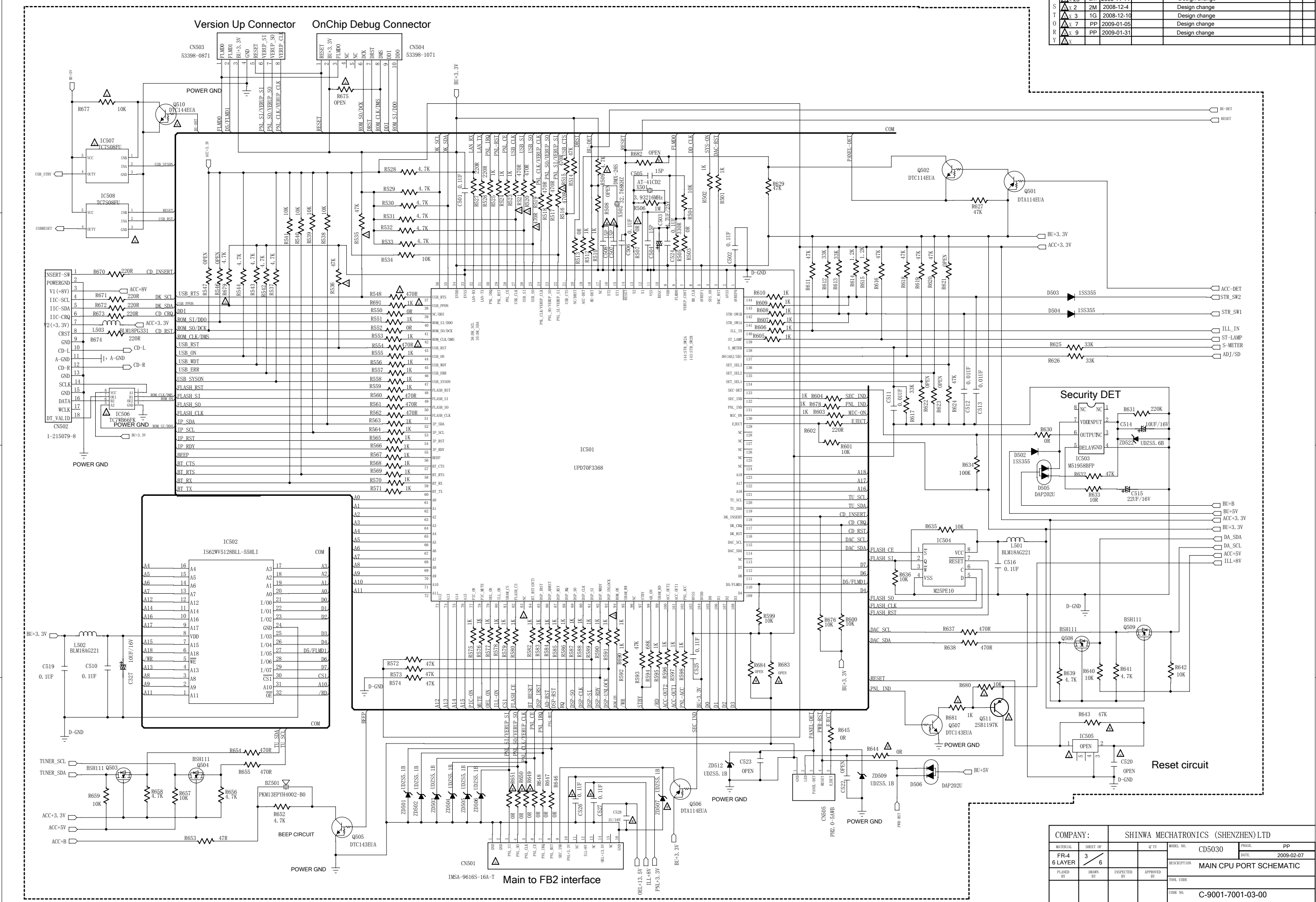
A

D

C

B

A



Version Up Connector OnChip Debug Connector

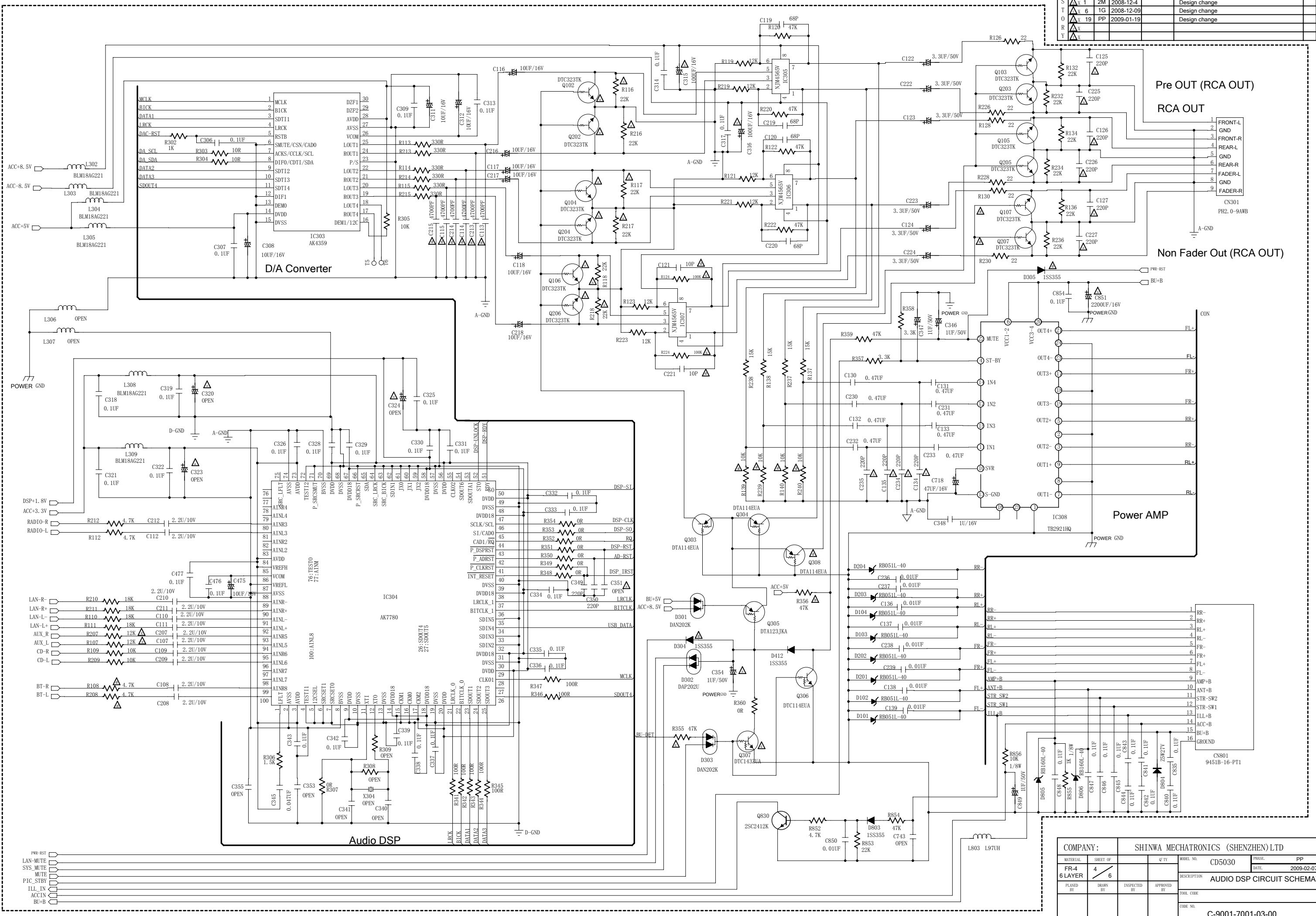
Main to FB2 interface

Security DET

Reset circuit

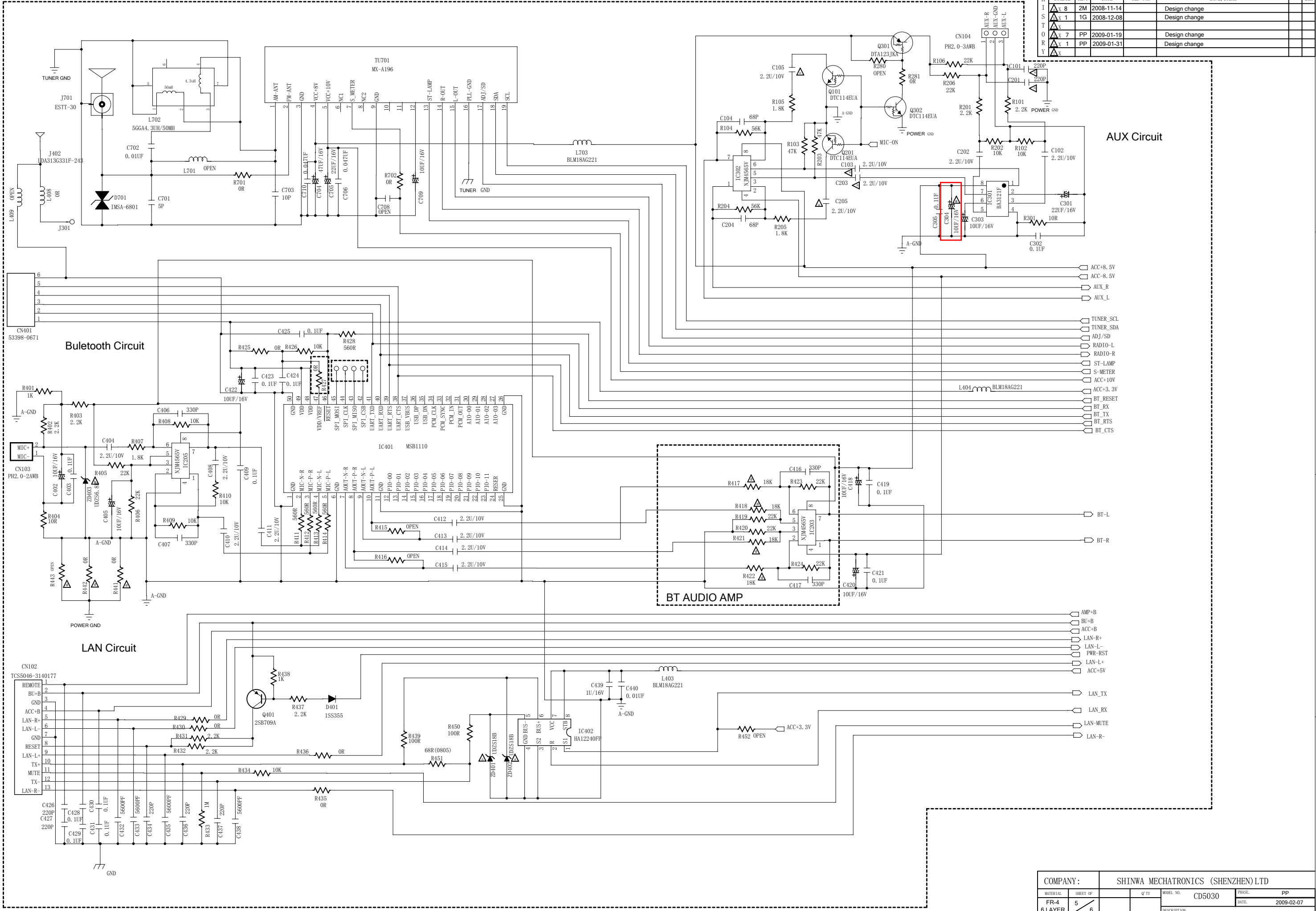
COMPANY:		SHINWA MECHATRONICS (SHENZHEN) LTD	
MATERIAL	SHEET OF	QTY	MODEL NO.
FR-4	3		CD5030
6 LAYER	6		DATE
			2009-02-07
DESCRIPTION			
MAIN CPU PORT SCHEMATIC			
PLANNED BY	DRAWN BY	INSPECTED BY	APPROVED BY
TOOL CODE			
CODE NO.			
C-9001-7001-03-00			

REV.	DATE	REF. NO.	ZONE, ITEMS	CHG.	EGR.
31	2008-11-14	2M	Design change		
1	2008-12-4	2M	Design change		
6	2008-12-09	1G	Design change		
19	2009-01-19	PP	Design change		



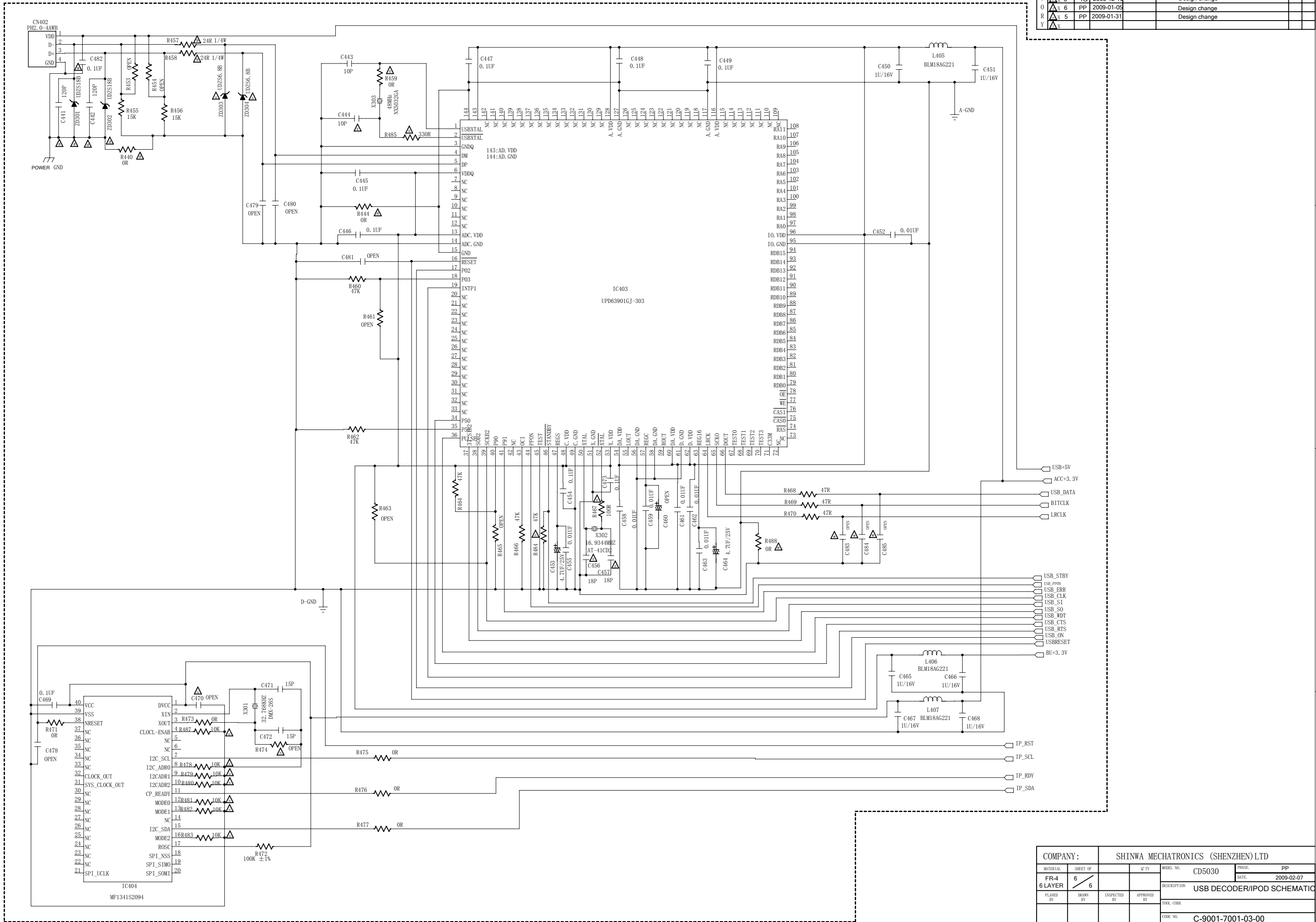
COMPANY:		SHINWA MECHATRONICS (SHENZHEN) LTD			
MATERIAL	SHEET OF	QTY	MODEL NO.	DATE	PP
FR-4	4	6	CD5030	2009-02-07	
DESCRIPTION			AUDIO DSP CIRCUIT SCHEMATIC		
PLANNED BY	DRAWN BY	INSPECTED BY	APPROVED BY	TOOL CODE	
CODE NO.			C-9001-7001-03-00		

REV.	DATE	REF. NO.	ZONE, ITEMS	CHG.	EGR.
8	2M 2008-11-14		Design change		
1	1G 2008-12-08		Design change		
7	PP 2009-01-19		Design change		
1	PP 2009-01-31		Design change		



COMPANY:		SHINWA MECHATRONICS (SHENZHEN) LTD			
MATERIAL	SHEET OF	QTY	MODEL NO.	CD5030	DATE
FR-4	5				2009-02-07
6 LAYER	6				
PLANNED BY	DRAWN BY	INSPECTED BY	APPROVED BY	DESCRIPTION	
				TUNER/BLUETOOTH/LAN/AUX SCHEMATIC	
				TOOL CODE	
				CODE NO.	
				C-9001-7001-03-00	

H	SYMBOL	REV.	DATE	REF. NO.	ZONE, ITEMS	CHG	EGR
I	X 15	2M	2008-11-14		Design change		
S	X 4	1G	2008-12-08		Design change		
T	X 6	1G	2008-12-10		Design change		
O	X 6	PP	2009-01-05		Design change		
R	X 5	PP	2009-01-31		Design change		
Y	X						



COMPANY:		SHINWA MECHATRONICS (SHENZHEN) LTD				
MATERIAL	SHEET OF	QTY	MODEL NO.	CD5030	PHASE	PP
FR-4	6	6	DATE	2009-02-07		
DESCRIPTION			USB DECODER/IPOD SCHEMATIC			
PLANNED BY	DRAWN BY	INSPECTED BY	APPROVED BY	TOOL CODE		
CODE NO.			C-9001-7001-03-00			