

## 1 INTERNAL PHOTOS OF TESTED EUT

The following photo are attached :

- 1 – Power supply, large view
- 2 – Power supply, top view
- 3 – Power supply, inside view
- 4 – Power supply, bottom face
- 5 – Power supply, bottom face, insulation removed
- 6 – Power supply, input board, component side view
- 7 – Power supply, input board, foil side view
- 8 – Power supply, Inlet detail
- 9 – Power supply, main board, foil side
- 10 – Power supply, main board, component side
- 11 – Power supply, main board, component side, all daughter boards removed
- 12 – Power supply, side daughter board, component side
- 13 – Power supply, side daughter board, foil side
- 14 – Power supply, front daughter board, component side
- 15 – Power supply, front daughter board, foil side
- 16 – Power supply, main board, component side, side daughter board removed

### 1 – Power supply, large view



## 2 – Power supply, top view



**WARNING**  
RISK OF ELECTRIC SHOCK. DISCONNECT POWER  
BEFORE WORKING. THE POWER SUPPLY  
SHOULD BE REPAIRS BY QUALIFIED PERSONNEL.

**ATTENTION**  
RISQUE DE CHOC ELECTRIQUE. DECONNECTER LE CORDON  
D'ALIMENTATION AVANT TOUT TRAVAIL DE REPARATION. LA REPARATION  
DEVOIT ETRE EFFECTUEE PAR LE PERSONNEL QUALIFIE.

**ACHTUNG**  
GEFÄHRDUNG DURCH ELEKTROSCHLÄGE. NETZSTROM ABTREN-  
NEN VOR JEDEM REPARATURARBEITEN. REPARATUREN SIND  
NUR VON QUALIFIZIERTEN PERSONEN DURCHFÜHREN ZU LASSEN.

**ATTENZIONE**  
RISCHIO SCOSSE ELETTRICHE. DISCONNETTARE IL CORDO  
D'ALIMENTAZIONE PRIMA DI INIZIARE QUALSIASI LAVORO  
DI RIPARAZIONE. LE RIPARAZIONI DEVONO ESSERE EFFETTUATE  
SOLO DA PERSONALE TECNICO QUALIFICATO.

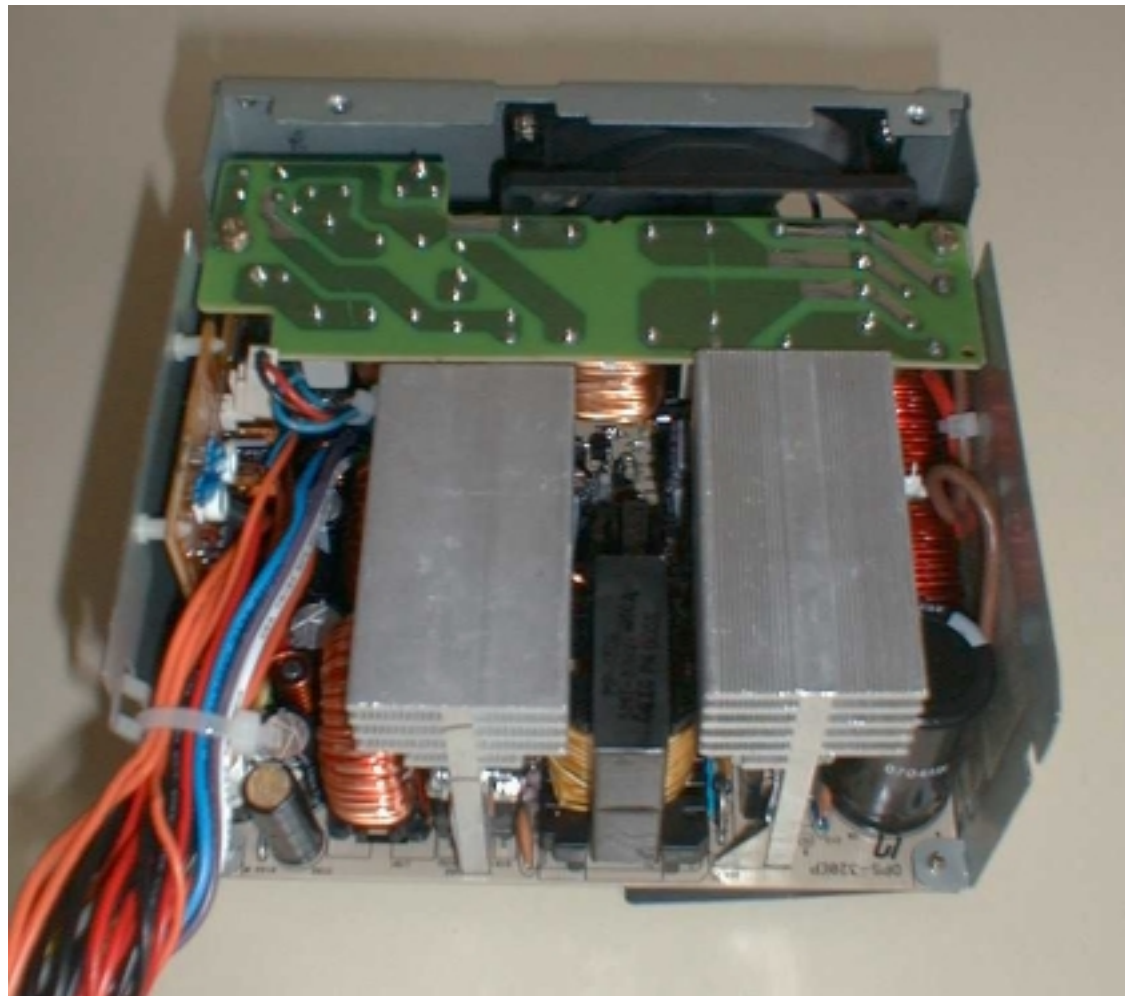
**CUIDADO**  
RISGO DE CHOCOS ELECTRICOS. DESCONECTAR EL CABLE DE  
ALIMENTACION ANTES DE DESMONTAR LA FUENTE. ACCESO  
INTERNO SOLO AUTORIZADO A PERSONAL TECNICO QUALIFICADO.

DELTA ELECTRONICS, INC.  
11500 DEER CREEK ROAD  
DALLAS, TEXAS 75243-1697  
USA  
TEL: 972-242-2200  
FAX: 972-242-2201  
WWW.DELTA-ELECTRONICS.COM

**DELTA ELECTRONICS, INC.**  
MODEL: DPS-1500A 5 YEAR W.  
SERIAL: 1001070 01-15-04  
000-0000 01-15-04  
DELTA ELECTRONICS, INC.  
11500 DEER CREEK ROAD  
DALLAS, TEXAS 75243-1697  
USA  
TEL: 972-242-2200  
FAX: 972-242-2201  
WWW.DELTA-ELECTRONICS.COM

OUTPUT: +5V 800mA, -12V 600mA, 0V  
MAX POWER: +5V 800mA, +12V 600mA / 1.2A  
EFFICIENCY: 82.5% @ 100% L.O.A., 85% @ 50% L.O.A.  
TOP COVERING POWER: 1500W @ 115V AC, P.F. 0.95  
Full Load Power: 1500W @ 115V AC, P.F. 0.95

### 3 – Power supply, inside view



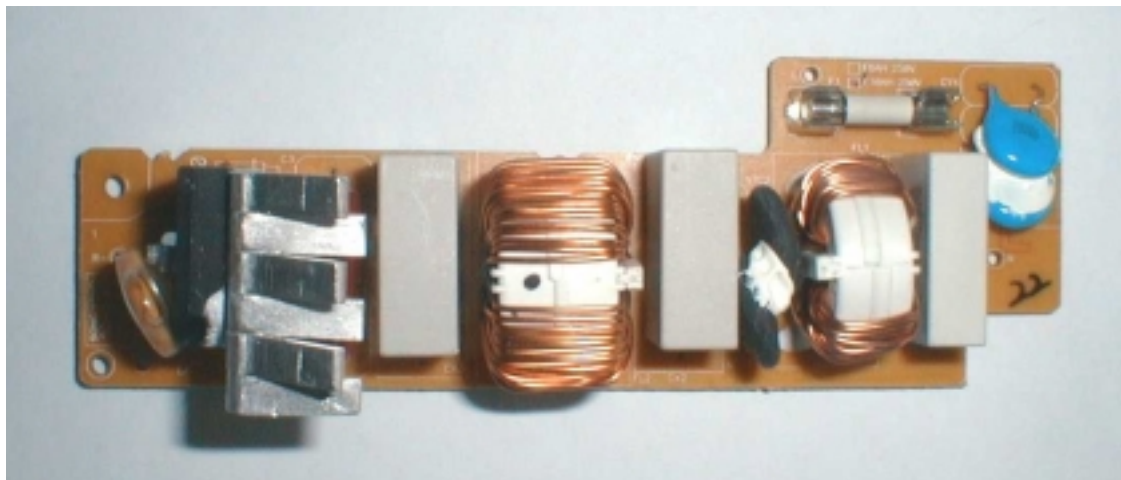
#### 4 – Power supply, Bottom face



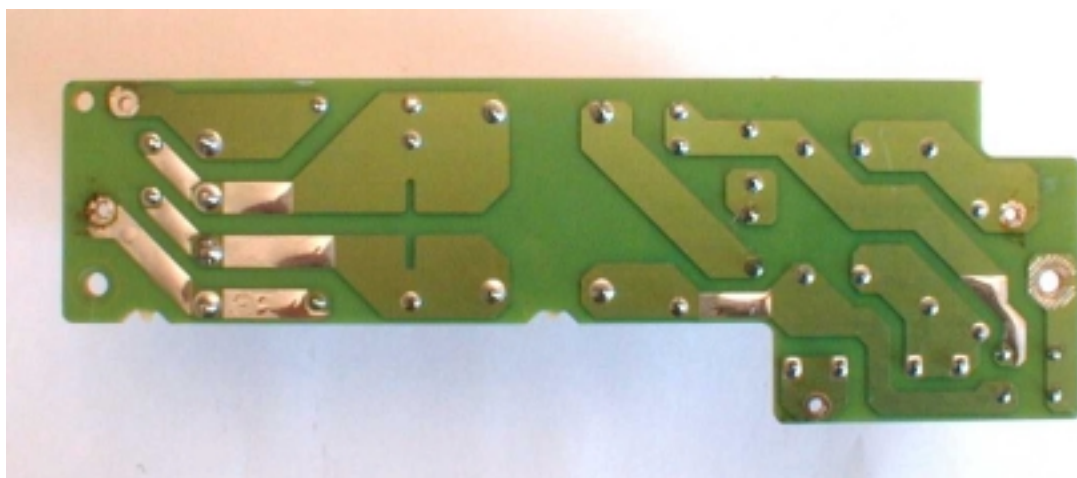
#### 5 – Power supply, Bottom face, insulation removed



**6 – Power supply, input board, component side view**



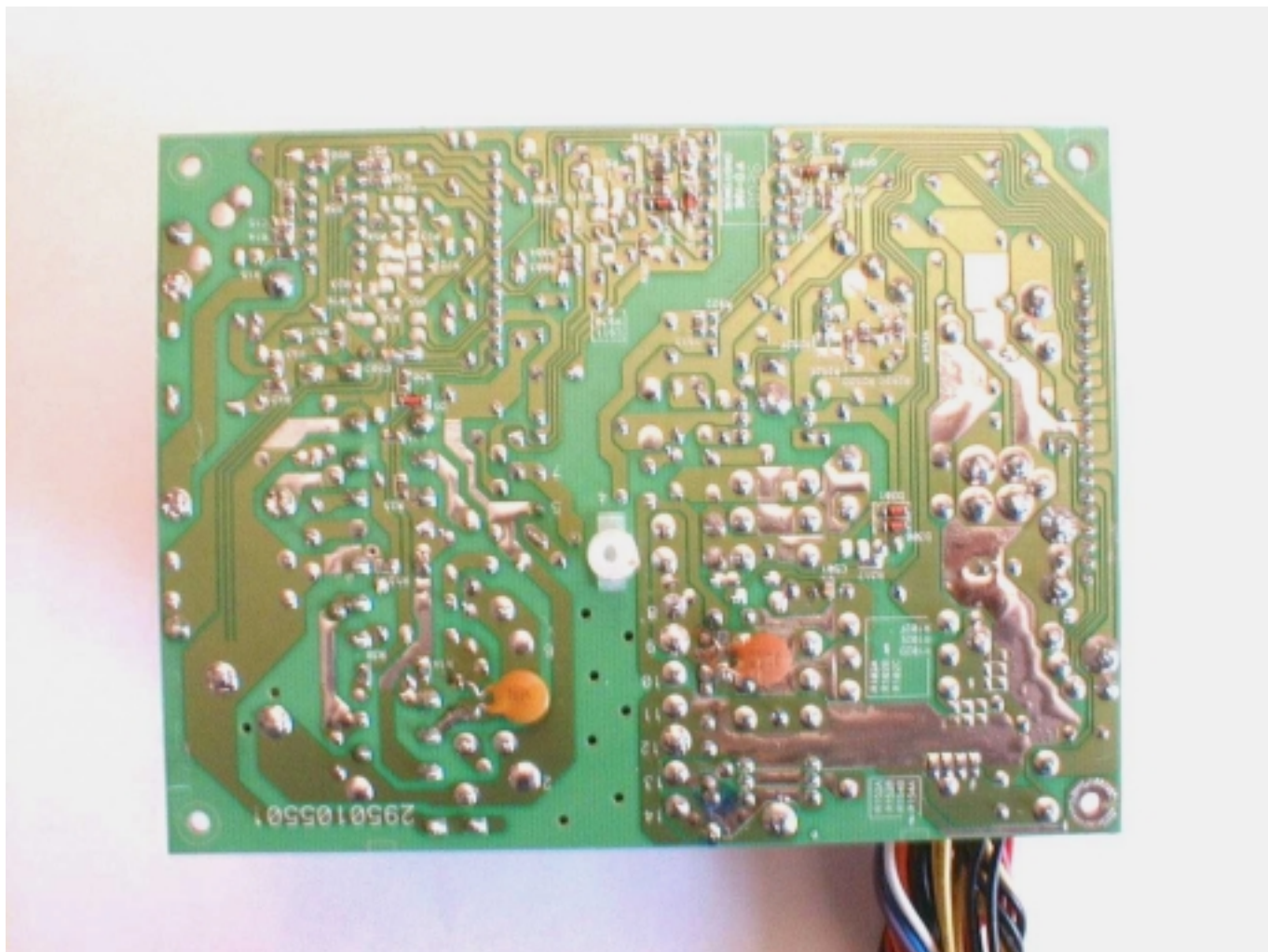
**7 – Power supply, input board, foil side view**



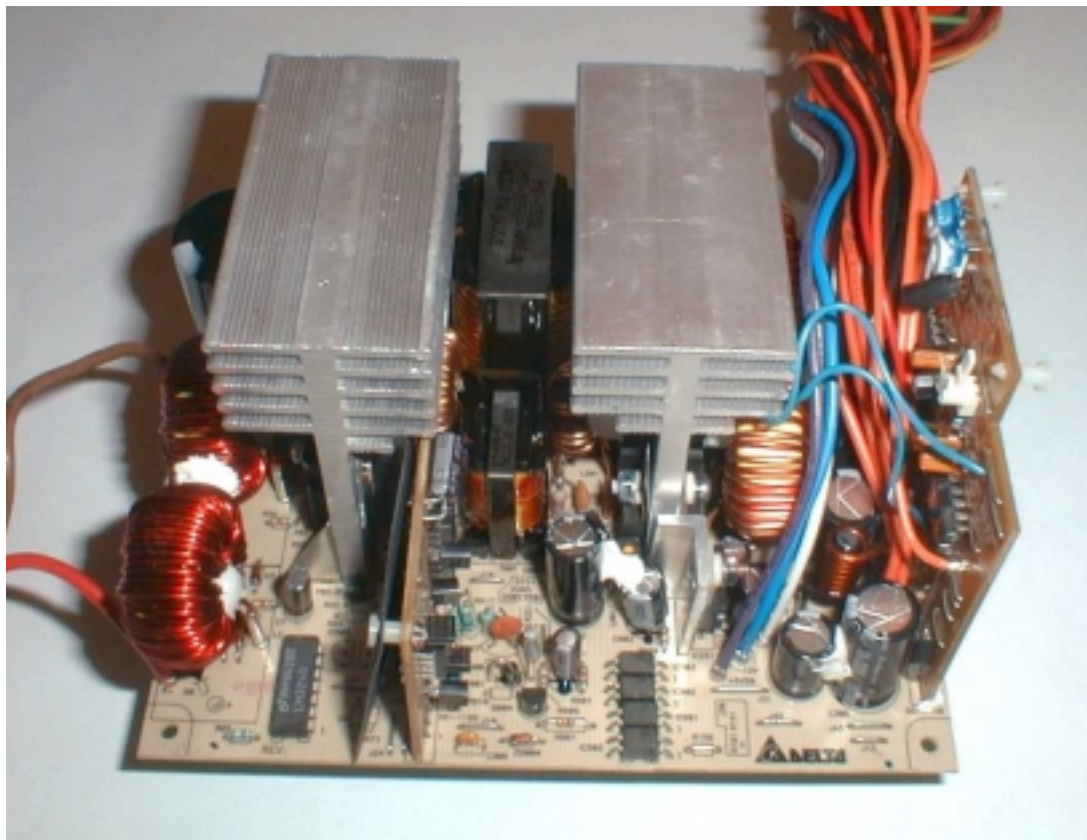
## 8 – Power supply, Inlet detail



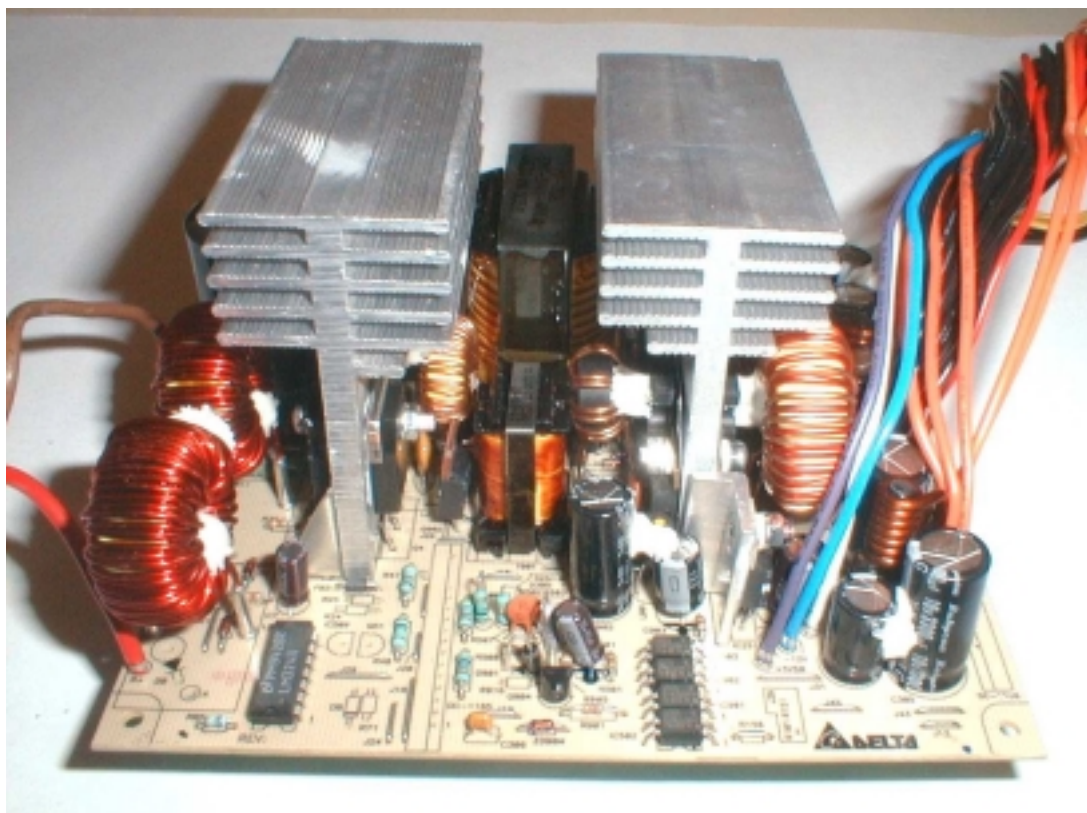
## 9 – Power supply, main board, foil side



**10 – Power supply, main board, component side**

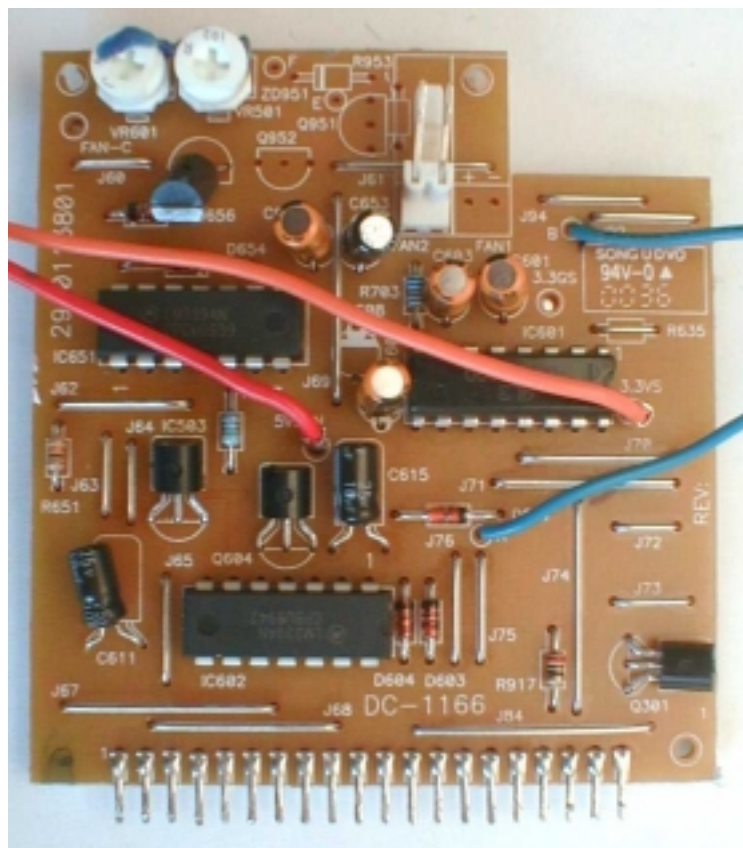


**11 – Power supply, component side, all daughter boards removed**

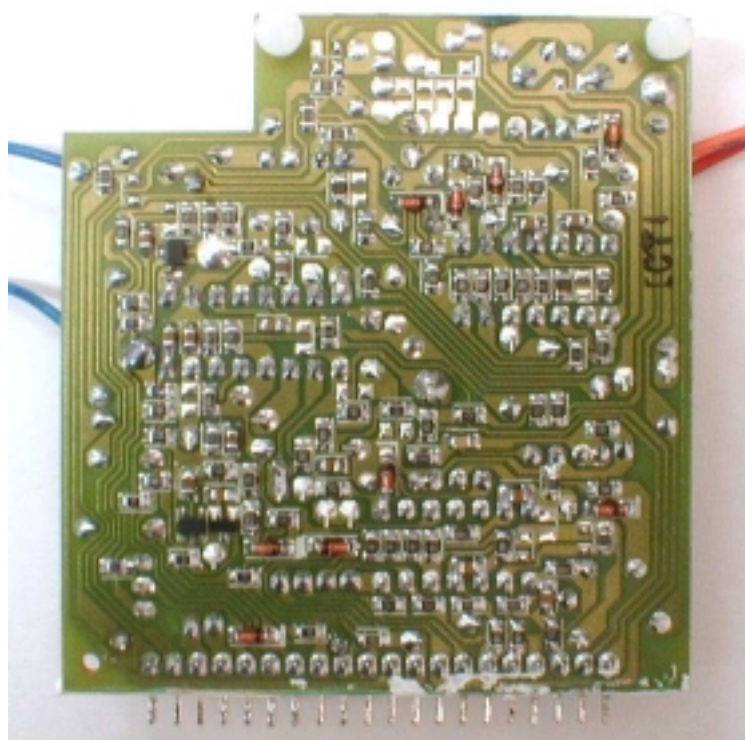




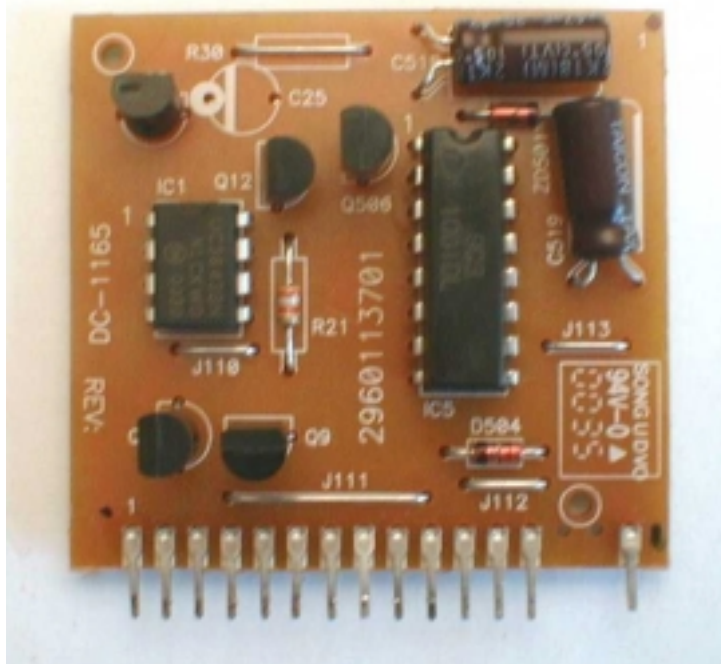
## 12 – Power supply, Side daughter board, component side



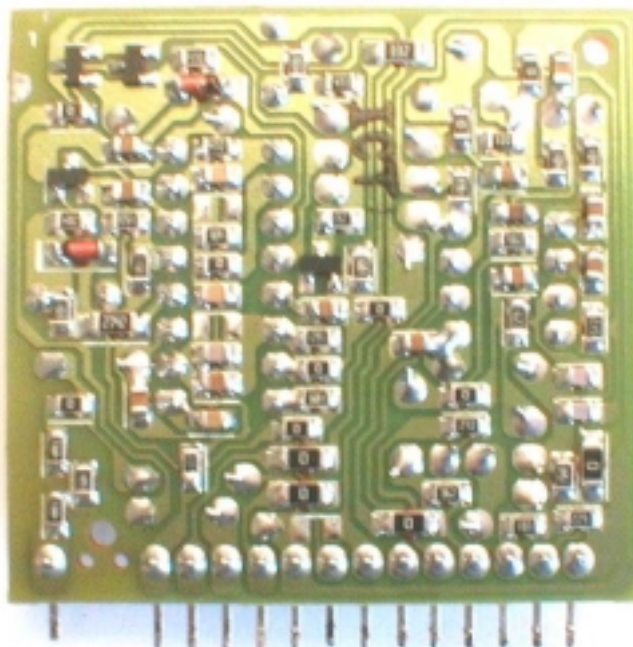
## 13 – Power supply, Side daughter board, foil side



**14 – Power supply, front daughter board, component side**



**15 – Power supply, front daughter board, foil side**



# 16 – Power supply, main board, side daughter board removed

