

HP Sprocket 2-in-1 Printer

Parts and Controls

- Supplied Items
- Product Overview
- LED Indicator Lights

Getting Started

- Installing Mobile App
- Loading Paper
- Charging Battery and Powering On
- Pairing Device and HP Sprocket 2-in1 Printer
- Camera Mode and Micro-SD Functions
- Sound Alerts
- Caring for your HP Sprocket 2-in1 Printer

Navigating the App

- Home Screen and Menu Navigation
- Browse Photo Galleries
- Take or Select a Photo
- Set up Social Media Sources
- Enable Sprocket Printing
- Image Preview
- Edit a Photo
- Create Custom Stickers
- Print a Photo
- Share a Photo
- Using Print Queue

Safety Information

Specifications

Troubleshooting



Parts and Controls

Supplied Items

- HP Sprocket 2-in1 Printer
- Setup Card
- HP ZINK® Sticky-Backed Photo Paper (10 sheets)
- USB charging cable
- Wrist Lanyard**
- Regulatory and Warranty Information

Product Overview

1. Power Switch
2. **Micro-USB** Charging Port
3. Status Indicator LED Light
4. Charging Indicator LED Light
5. **Viewfinder**
6. **Shutter Release Button**
7. **Timer Button and Timer LED**
8. **Flash LED**
9. **Micro-SD Slot**
10. **Micro-SD Storage LED**
11. Top Cover
12. Paper Output Slot
13. Lanyard Notch
14. **Tripod Mount**
15. **Speaker Output**



Selfie Mirror

- Use the reflective surface on the front side of the viewfinder as a self-portrait mirror.

Camera Flash Functions

- When the device is powered on in Camera Mode, the device will automatically trigger the flash if it is necessary for the light conditions.

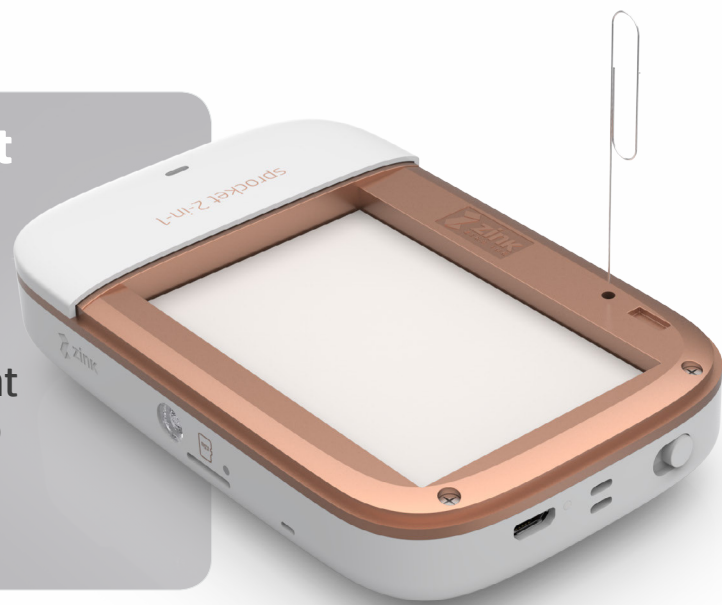


Using the Timer Button

1. Press and release the Timer Button to toggle between turning on and off the camera timer.
2. Press the Shutter Release Button to begin the countdown. A sound will play to let you know the timer is enabled. The timer will automatically disable after each photo taken.
 - To cancel the timer while it is counting down, press the Timer Button.

What if my printer isn't responding or won't connect to my mobile device?

If you have trouble connecting or other issues, reset the printer. On the printer, locate the pin-hole **underneath the Top Cover** and insert a straight pin into the hole to press the reset button until the printer turns off. Restart the printer.



LED Indicator Lights

Charging Indicator LED

LED Color/State	Condition
Off	Fully charged or not connected to a power source
Red, solid	Charging. Printer can be used while charging.
Red, blinking	If a user presses the power switch and the device cannot power ON because of a low battery

Status Indicator LED

LED Color/State	Condition
Off	The printer is OFF.
White, solid	The printer is ON.
White, fast blinking	The printer is booting up; LED will turn solid white when ON.
White, slow blinking	Processing a print job from camera or mobile device.
Red, solid	Printer in error state. Wait for the light to turn white to send a print job.
Red, slow blinking	Out of paper. Insert more paper to continue printing.

Micro-SD Storage LED

LED Color/State	Condition
Off	No Micro-SD card installed or card installed with available storage
Red, solid	Micro-SD storage is full. Photos cannot be saved, but can be printed.
Red, slow blinking	Storage card has space for approximately 20 more photos before full

Getting Started

Installing Mobile App

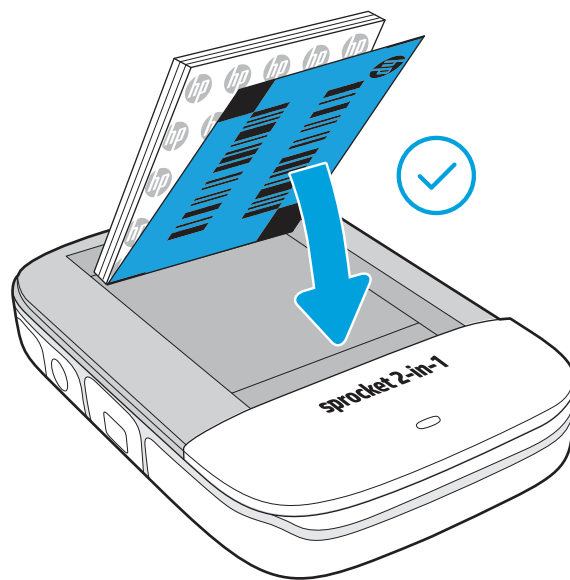
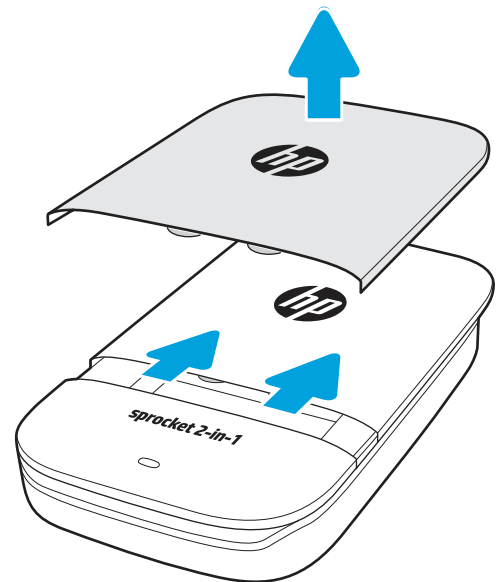
To use your HP Sprocket 2-in-1 Printer **with your mobile device**, you must download the companion HP Sprocket Photo Printer app from the App Store® or on Google Play™. To download the sprocket app, visit hpsprocket.com/start. There, you will be directed to the appropriate app store for your device.

- The sprocket app is supported by Android™ devices using OS v4.4 and above and iPhone® iOS 8 and above.
- You must install the companion sprocket app to operate the HP Sprocket 2-in-1 Printer **with your mobile device**.



Loading Paper

1. Take off the Top Cover by sliding it slightly forward and away from the Paper Output slot. This will release the lid and allow you to lift off the Top Cover to insert paper.
2. Unwrap a pack of HP ZINK® Sticky-Backed Photo Paper (10 sheets). Make sure the included blue Smartsheet® is on the bottom of the stack, barcode and logo facing down. Stack the photo paper on top of the Smartsheet® with the HP logos facing down also.
3. Place both the paper and the Smartsheet® into the Paper Input Tray.



What size paper do I need to buy for my HP Sprocket 2-in-1?

Only use **2" x 3"** HP ZINK® Sticky-Backed Photo Paper with HP Sprocket 2-in-1. You can purchase additional paper within the sprocket app by tapping “Buy Paper” in the Main Menu **or from hpsprocket.com/start**.

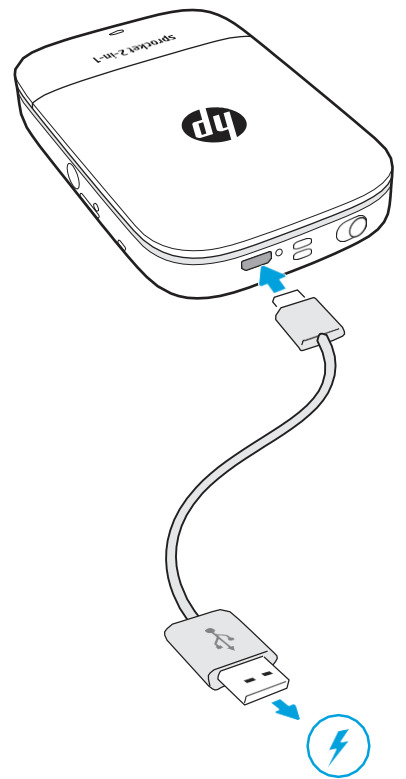
Use genuine HP ZINK® Sticky-Backed Photo Paper. ZINK® makes custom photo paper for a variety of printers. You can also purchase genuine HP ZINK® Sticky-Backed Photo Paper from other retailers.

Charging Battery and Powering On

1. To charge, insert the micro-USB charging cable into the HP Sprocket 2-in-1 Printer.
2. Connect the Micro-USB Cable to a power source.
3. When connected, **the device will automatically power on and the LED indicator light will turn red to indicate charging.**
4. To charge fully, allow 60-90 minutes, or until the charge LED turns off.
5. Turn off the printer **by sliding the Power button until the white LED indicator goes dark.**

Note: To turn on the printer without charging, slide the Power button and hold until the Status LED indicator turns white.

- Continued use during charging will slow down the charging speed.
- Connect the Micro-USB Cable to a power source capable of supplying 5Vdc/2A.

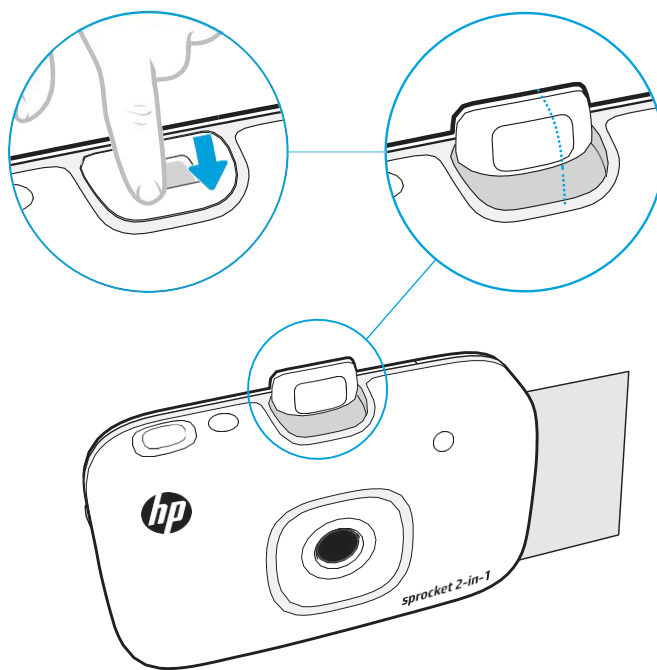


Changing from Print Mode to Camera Mode

Your HP Sprocket 2-in-1 easily transforms from an instant camera to a mobile printer.

To use in Camera Mode

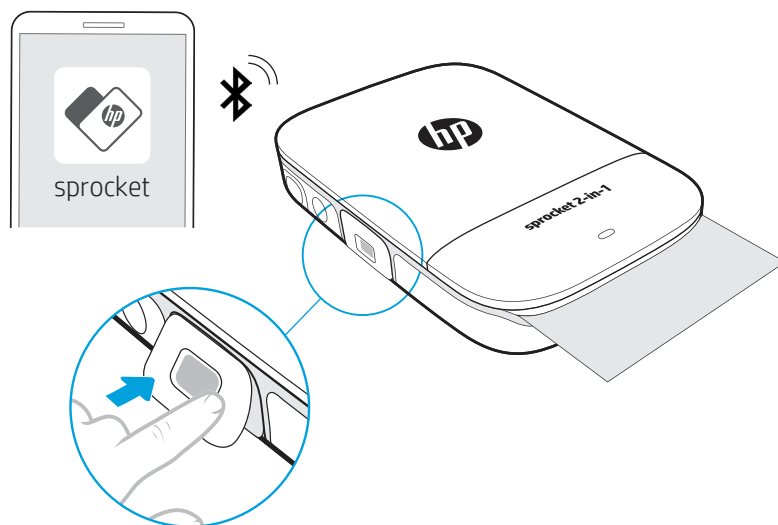
1. Open the viewfinder by gently pressing straight down on the indicated edge.
 - Do NOT pull up on the viewfinder or pry it open. This can break the locking functionality in the viewfinder and prevent the device from operating in Printer Mode.
 - When the viewfinder is open, the device is in Camera Mode and cannot communicate with the sprocket mobile app. To print from the app, close the viewfinder and make sure Bluetooth is on and paired.



2. Raise the viewfinder to your eye. Press down on the Shutter Button to take an instant photo. When paper is loaded in the device, the photo will begin to print instantly.
 - The instant photo will only be saved for future use if a micro-SD card is inserted in the HP Sprocket 2-in-1 Printer.

To use in Printer Mode

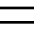
1. Close the viewfinder by pressing it towards the indentation until it latches into place.
 - The device can only communicate with the sprocket app using Bluetooth when the viewfinder is closed.



2. Use the sprocket app to decorate and print photos from your mobile gallery and social sources.

Pairing Mobile Device and HP Sprocket 2-in-1 Printer

For Android™

1. **Slide** and hold the Power Button for 3 seconds to turn on the printer. The Status LED will turn white once fully powered on.
2. Be sure Bluetooth is turned on for your mobile device or tablet, and then open the sprocket app. Select the Main Menu  in the upper left-hand corner.
3. Tap **sprocket** and then **Printers** to pair your printer with your mobile device or tablet. A pop up message will direct you to Android™ **Settings** to pair your printer. **Turn Bluetooth on and then select the printer from the list of available devices. A list of available devices will display.**

For iPhone®

1. **Slide** and hold the Power Button for 3 seconds to turn on the printer. The Status LED will turn white once fully powered on.
2. Open iPhone® **Settings** and select **Bluetooth**. Turn **Bluetooth** on and then select the printer from the listed devices.
3. Next, launch the sprocket app. See “Installing Mobile App” for more information.
 - A reminder message will appear if you try to print a photo and are not paired with your HP printer.
 - If your mobile device and printer will not pair, try resetting the printer.
 - Only one iOS device can pair with the printer at a time. To share the printer, turn off Bluetooth and allow someone else to pair.

Note: The Smartsheet® will pass through the HP Sprocket 2-in-1 Printer automatically before the first print job. The Smartsheet® cleans and calibrates the printer for the paper pack. Use a Smartsheet® with each pack of newly loaded paper for best print quality. Each Smartsheet® is specially calibrated to prepare that pack of paper for use in your printer. Discard the sheet after you have printed all ten sheets in the pack.



Caution:

- Do not insert more than 1 pack of HP ZINK® Sticky-Backed Photo Paper (10 sheets plus 1 Smartsheet®) into the printer at a time to avoid paper jams or print errors.
- Only use **2" x 3"** HP ZINK® Sticky-Backed Photo Paper with the printer to avoid paper jams and malfunctions. You can purchase additional paper within the sprocket app by tapping “Buy Paper” in the Main Menu.
- In the case of a paper jam, do not pull on the paper. Instead, turn the printer off and on again to automatically eject the paper.
- Do not pull the paper out of the printer during printing.
- If spills or moisture collect on a photo, wipe it away as soon as possible to prevent color damage. Keep photo paper clean and free of bends or damage for best print quality.

Camera Mode and Micro-SD Card Functions

State	Result
If paper is loaded without a micro-SD card	Captures a photo using the camera, a shutter sound plays, and one copy of the photo prints
If paper is loaded with a micro-SD card with available storage	Captures a photo using the camera, a shutter sound plays, saves a digital version to micro-SD card, and one copy of the photo prints
If no paper is loaded with a micro-SD card with available storage	Captures a photo using the camera, an error sound plays, and saves a digital version to micro-SD card (Status LED is blinking red)
If no paper or micro-SD card is loaded	An error sound plays (Status LED is blinking red)
Connected to a PC using the USB cord and a micro-SD card is installed	The device will be in transfer mode and unable to capture or print images.

Sound Alerts

State	Sound Result
Power ON	Plays once when device powers ON
Power	Plays once when device powers OFF (including auto-off)
Shutter Release	Plays once when the Shutter Release is pressed and a photo is taken. When the timer is running, the sound plays when the photo is taken (end of countdown).
Enable/Disable Timer	Plays once per press of the Timer button
Timer Countdown	Press the Timer button to start the timer, then press the Shutter Button. A sound will play slowly in sync with the Flash LED for the first 7 seconds, then quickly for the last 3 seconds.
Viewfinder open/close	Plays once per press of the Viewfinder
Error	Plays once per incident (no paper detected, cannot take a photo, etc.)

Caring for your HP Sprocket 2-in-1 Printer

- Remove fingerprints, dust, and dirt from the printer using a dry microfiber cloth.
- Keep the top cover on to prevent dust and debris from entering the paper path.
- **Update the printer firmware. Make sure your mobile device is connected to the Internet and then open the HP Sprocket app. If there is a firmware update available, a firmware update screen displays. Follow the on-screen prompts to complete the update. Your printer must be charged to 50% or higher before a firmware update.**
- **Keep your sprocket app updated. If you don't have your apps set to automatically update, go to the appropriate app store and make sure the latest version is installed.**

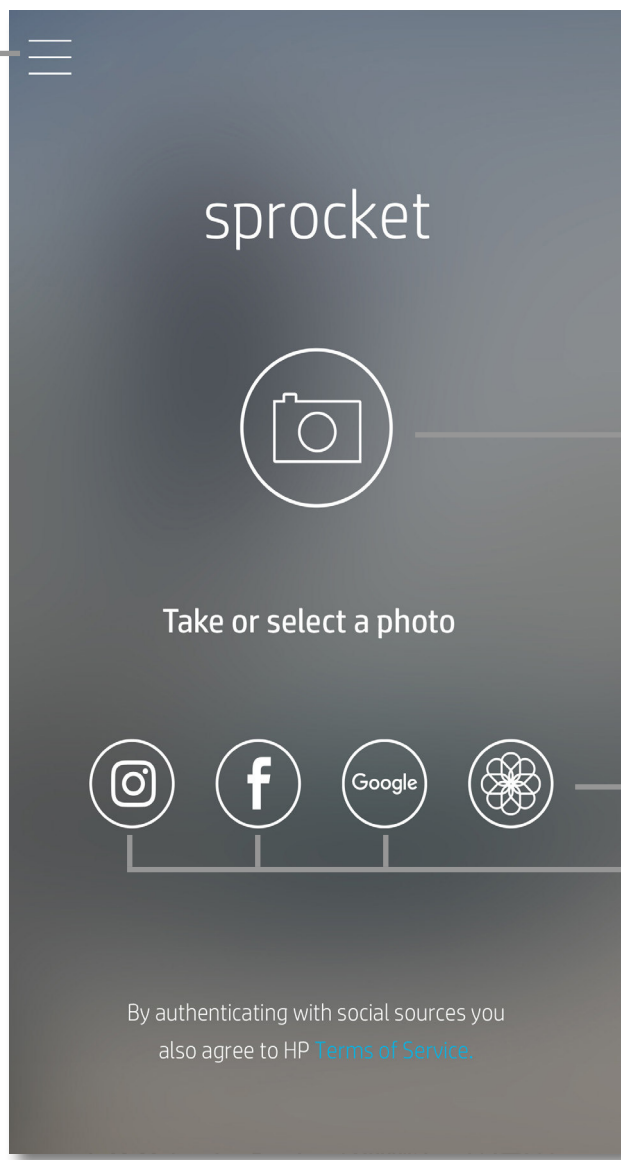
Apple, the Apple logo, iPhone, iPad, iPod, and iPod touch are trademarks of Apple Inc., registered in the U.S. and other countries.

App Store is a service mark of Apple Inc. Android and Google Play are trademarks of Google Inc. Google and Google Logo are registered trademarks of Google Inc.

Navigating the App

Home Screen and Menu Navigation

Main Menu



Take a photo

Camera photo gallery

Social media sources

By authenticating with social sources you also agree to HP [Terms of Service](#).

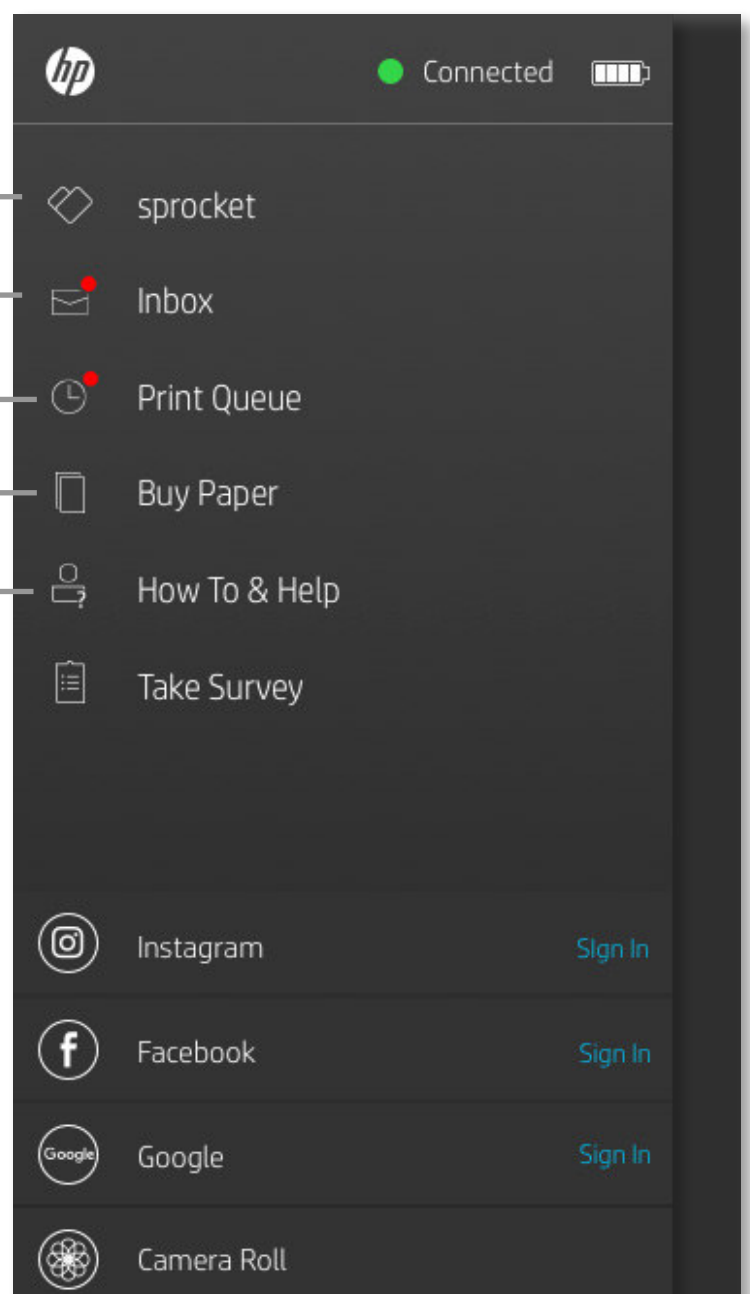
View paired printer information

Get messages and notifications from the sprocket team

Add and view images to print

Purchase HP ZINK® Sticky-Backed Paper

Access Help and printer support



Using the Main Menu

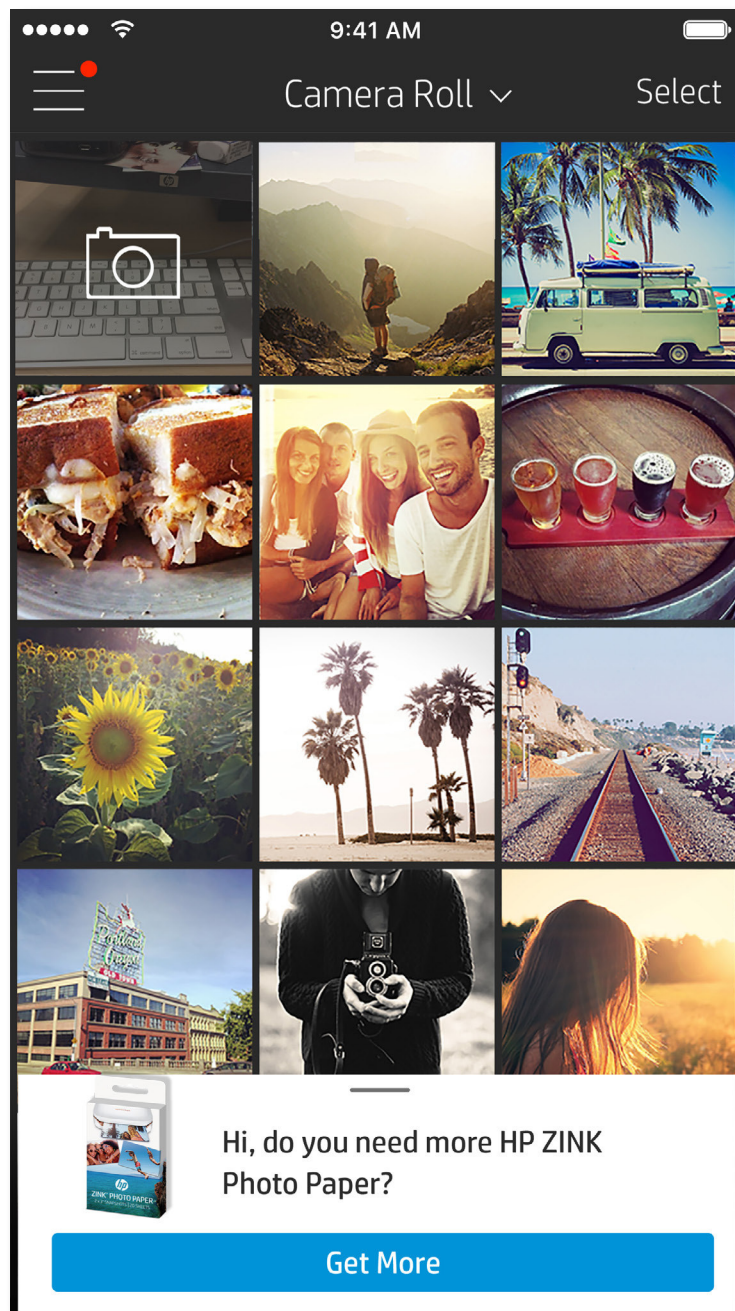
Tap **sprocket** to view information about your paired printer.

- Check the battery status and change the Auto Off settings for the printer.
- View the Mac Address, Firmware Version, and Hardware Version. These will be necessary if contacting HP Sprocket Support.
- This screen will also show Firmware upgrades when available.

Browse Photo Galleries

1. From the Main Menu, select a social source or the camera photo gallery to view supported photo sources.
2. Once an photo source is selected, swipe left or right on the screen to browse all the galleries.
3. For each social media source, a sign in screen will display until you enter your credentials and allow the sprocket app to access your photos.

• See “Set up Social Media Sources” for information on accessing social media account photos.



Enable notifications in the sprocket app to receive updates, tips, and highlights of new features.

Take or Select a Photo

1. Launch the HP sprocket app.
2. On the Home Screen, tap the center camera icon to take a photo. You can also select a photo from your device or a social source by tapping one of the lower four icons.
3. If you choose to take a photo, your camera will open. Reverse the camera's view in the upper left-hand corner. Tap exit to return to the Home Screen.
4. Once you've taken or selected a photo, you can Edit, Print, or Share your selection.

Set up Social Media Sources

1. In the Main Menu, tap **Sign In** for each of the social media sources listed to allow the sprocket app to gather photos from your various accounts.
2. You will be redirected to the app login page. Enter your credentials to allow sprocket access to your photo galleries.
3. Select a photo to edit, print, or share! You will be able to browse your social media photos within the sprocket app.

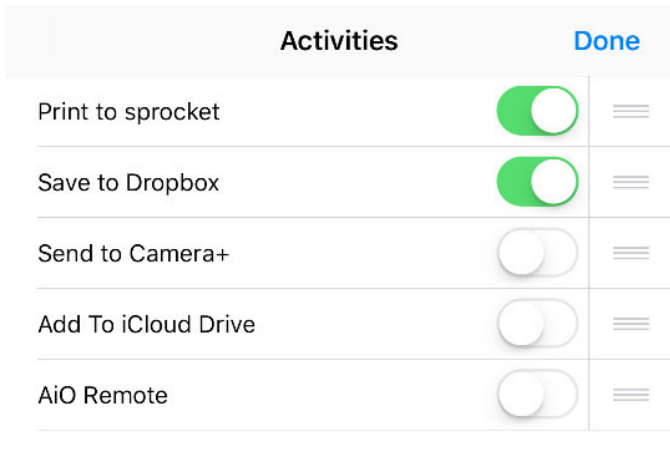
User experience navigating the sprocket app might vary based on your operating system. Stylistic differences provide slight variation in features and experience.

Enable sprocket Printing

Enable printing to your HP Sprocket 2-in-1 Printer from any app, anytime.

For iPhone® or iPad®:

1. From the Preview Screen, tap the Share icon in the lower left corner.
2. Select the More icon—it has three dots.
3. Turn on “Print to sprocket”. You can also drag “Print to sprocket” to the top of your activity list for easy access.



For Android™:

1. From the Preview Screen, tap the Share icon in the lower left corner.
2. Select “sprocket” to enable printing.

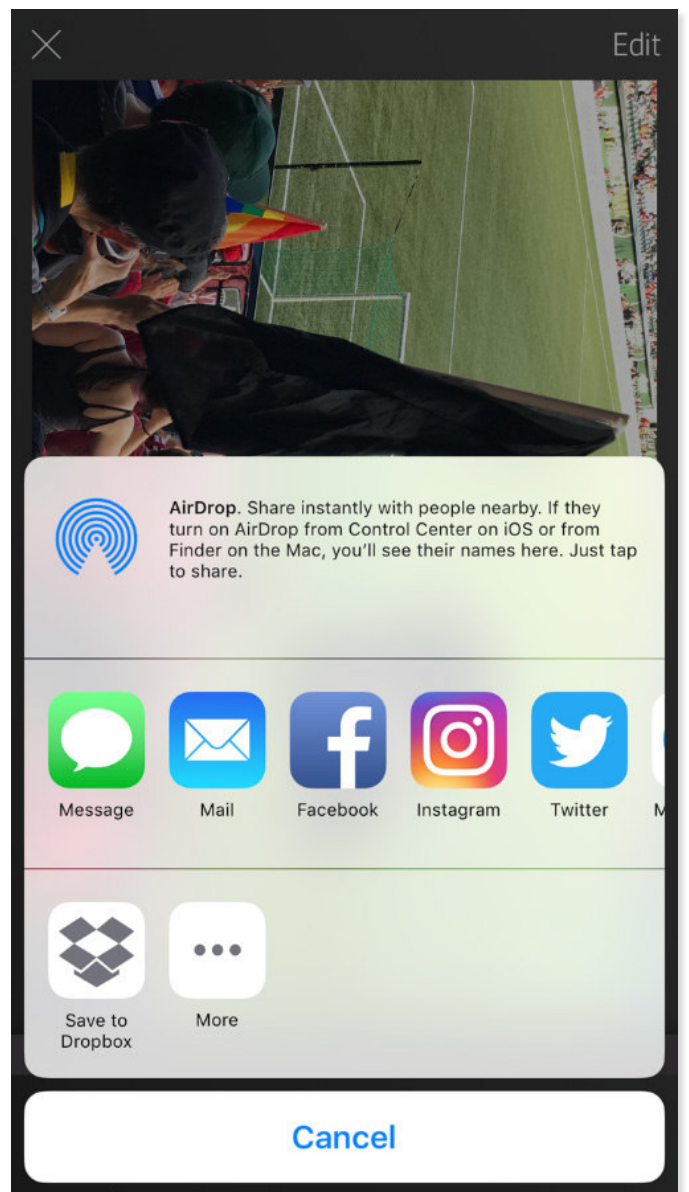

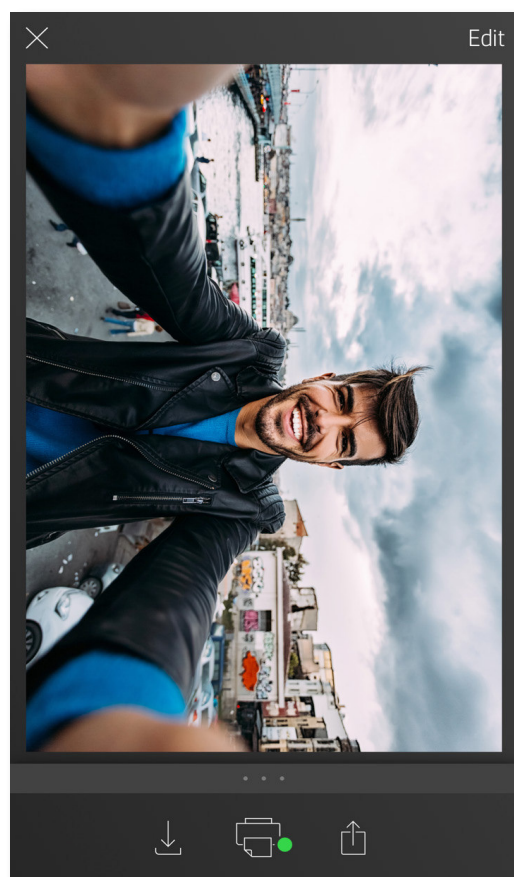


Image Preview

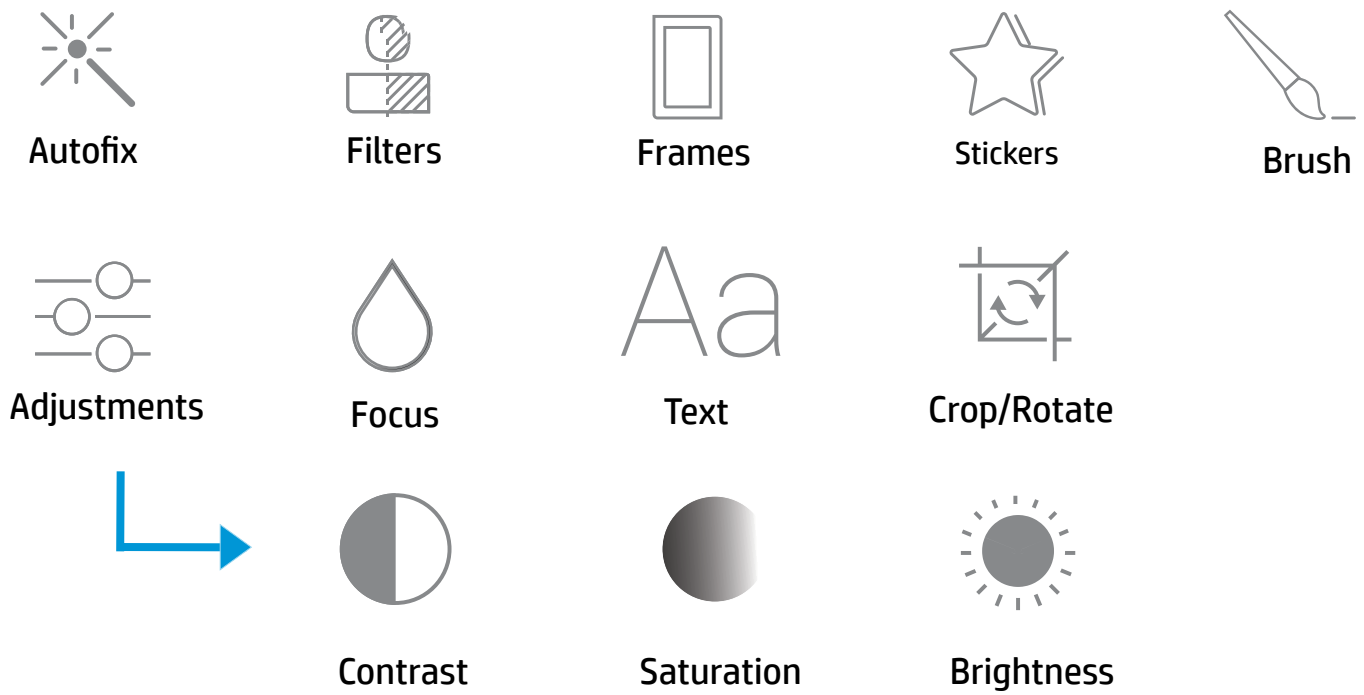
Edit, print, or share your photo from the image preview screen.

- Exit Image Preview by tapping ✕ in the upper-left corner.
- Tap Edit to personalize your image.
- Tap the printer icon  to print.
- Use a two finger pinching motion on the screen to zoom, rotate, and resize your photo.
- You can also share or save your photo from Image Preview.



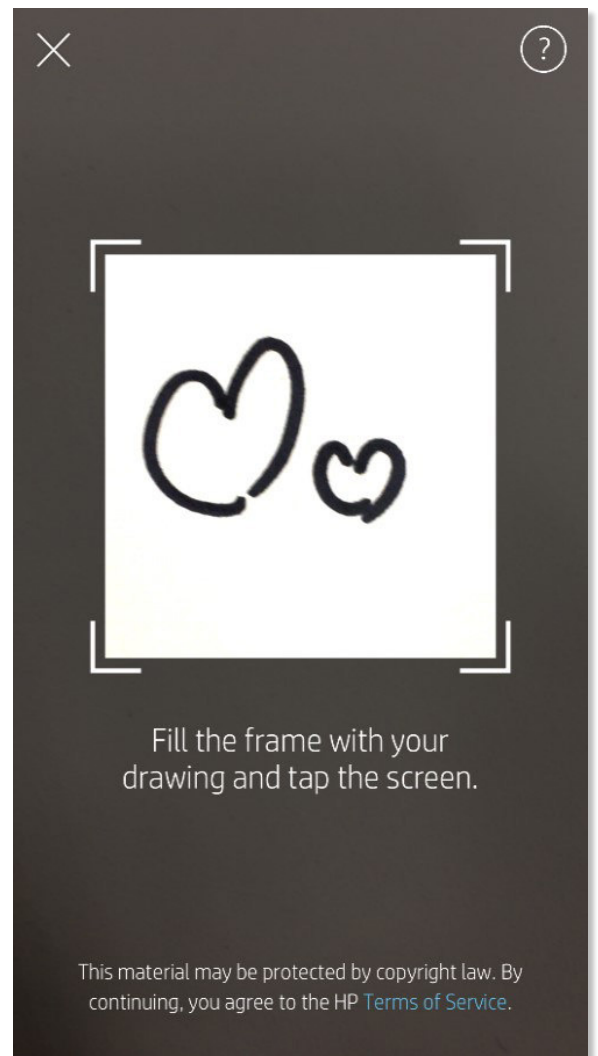
Edit a Photo

Tap **Edit** to adjust the photo's appearance, add text or stickers, and apply filters. Be sure to save your creation when editing is complete by tapping the checkmark in the **upper** right corner.




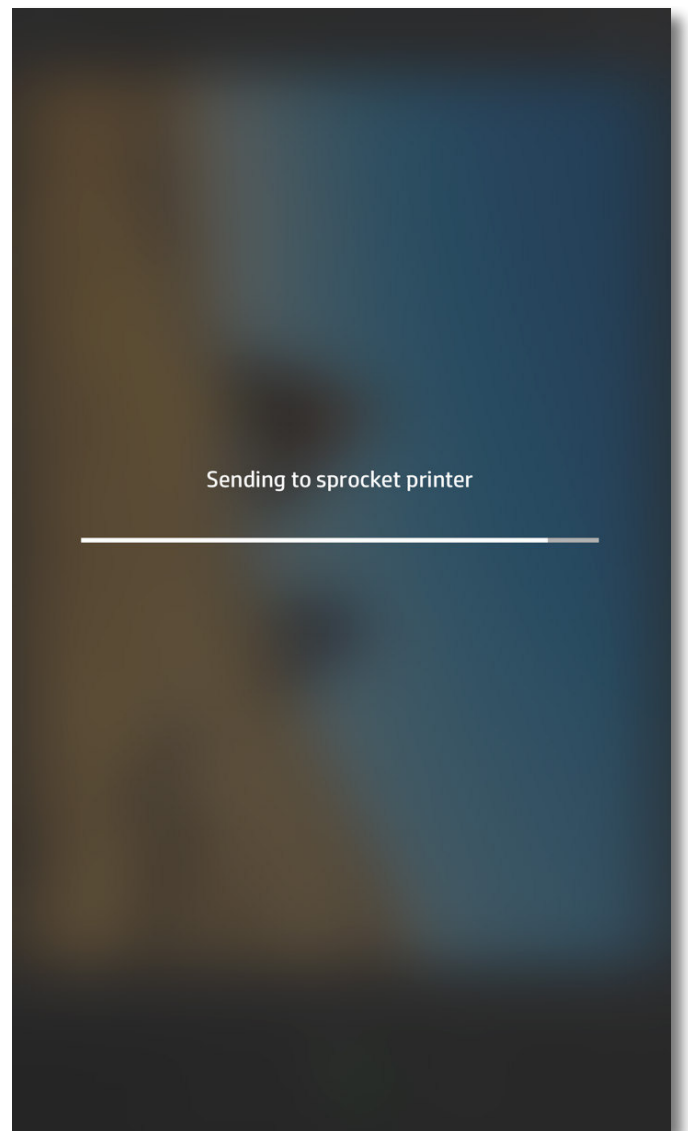
Create Custom Stickers

1. Create your own drawing or doodle to add to a sprocket print.
2. In the Edit menu, select the Sticker icon.
3. In the bottom-left corner, select the plus sign icon.
4. Fill the frame with your drawing and tap the screen.




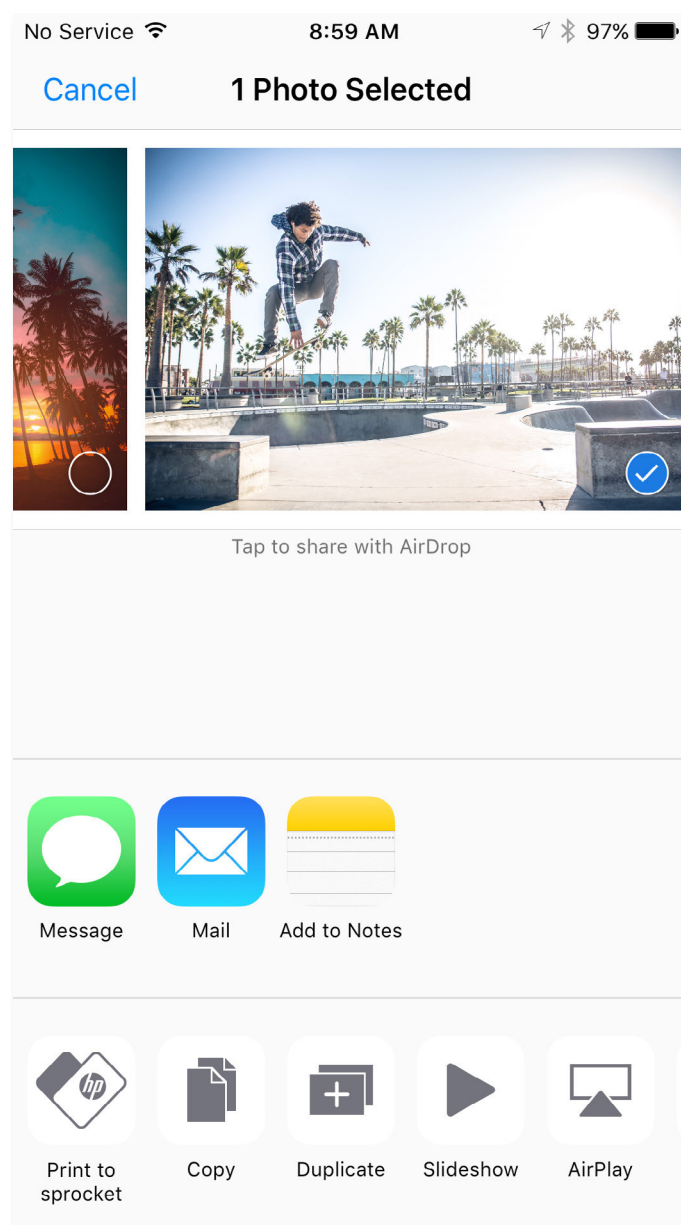
Print a Photo

1. Tap the print icon  to send your photo to your HP Sprocket Photo Printer.
2. The confirmation message will display, along with a progress bar, to let you know your print job is processing.
3. The white Status LED light will flash, the printer will make a light humming noise, and the image will begin printing while the job completes.
4. Now that you've printed your photo, use it to decorate as is or remove the backing from the photo sheet by gently peeling back on a corner. Stick it on a folder, binder, or in a scrapbook!
 - If you receive an error message that you are not connected to your printer when you press print, be sure the printer is still powered on and re-pair your device with the printer to try printing again.
 - Before printing, make sure no items are blocking the paper output slot.



Share a Photo

1. Tap the share icon  to send your photo to social media and other apps.
2. After tapping Share, you can send your photo via SMS message, email, cloud storage, or to a social media source. When you select your desired sharing source, it will load in the appropriate application for that media outlet.

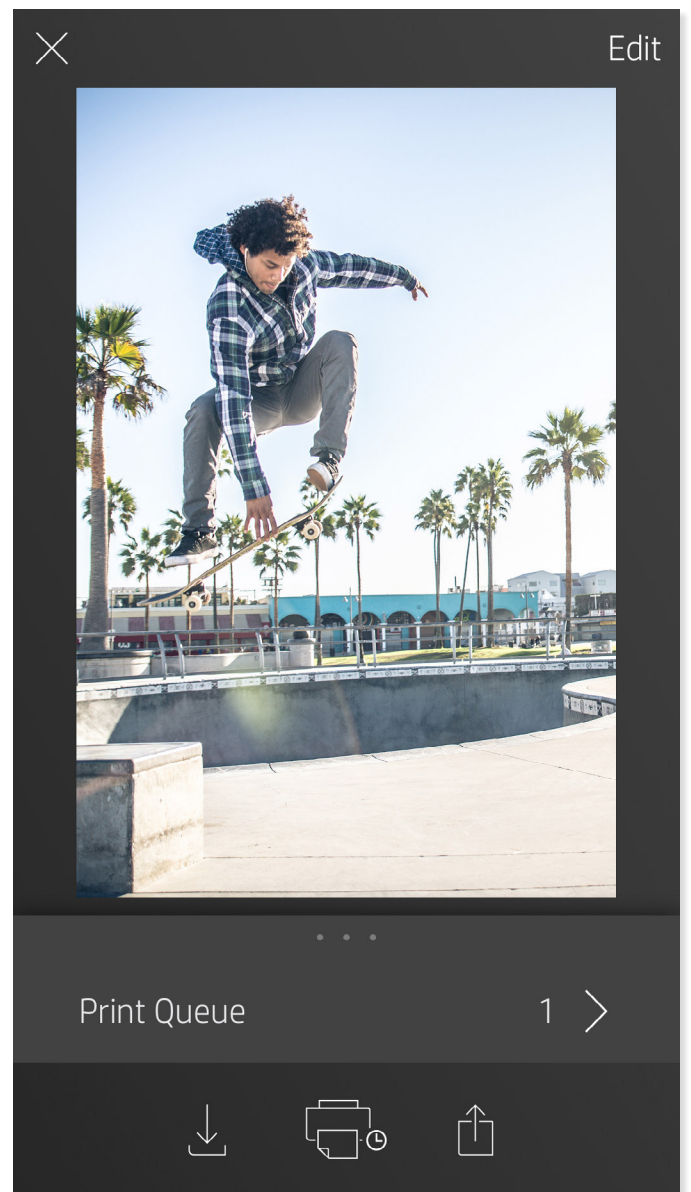


Note: The available “Share” options will vary based on the operating system and the applications installed on the mobile device.

Using the Print Queue

Print Queue allows you to save photos to print later and send consecutive prints to your printer.

- **Queue photos offline for future printing!** Send prints to your HP Sprocket 2-in-1 Printer while on the go. When you're ready to print, access the Print Queue from the Main Menu in the sprocket app and begin printing. The prints in the queue will not automatically print when a connection is re-established.
- **Send multiple and consecutive prints to the printer.** The prints will appear in the queue in the order they were sent. If the printer is out of paper, images will be added to the queue and will print when paper is loaded.
- **Mange the Print Queue from the Main Menu of the sprocket app.**



Safety Information

For regulatory and safety notices, refer to the included sheet in your product packaging.



Battery Safety

- Do not disassemble the product or battery or short the battery terminals.
- Avoid contact with a leaking or damaged battery.
- Adult supervision is recommended when the product is being used by young children.
- Do not disassemble, strike, press, or put in a fire.
- Do not use the printer if the product battery is swelling and causing product expansion.
- Keep the device clear of high temperatures and moisture.

Removing Top Cover

Always power down your HP Sprocket 2-in-1 Printer before removing the top cover from the printer and when loading paper.


Specifications

Specification	Description
Product numbers	X7N07A (white) X7N08A (black)
Dimensions and weight	<ul style="list-style-type: none">• Dimensions: 116 x 75 x 23 mm (4.53 x 2.95 x 0.87 in)• Weight: 0.172 kg (0.379 lb)
Connectivity	Bluetooth 3.0 Passive near field communication (NFC)
Printer management	HP sprocket app
Power supply	Internal rechargeable battery Two-cell 500 mAh Li-Polymer 7.4 V
Charge time	Up to 90 minutes
Power consumption	0.9 W (standby) Average 1.91 W (based on first print) Maximum 3.46 W at 25°C (77°F)
Print technology	Thermal printing with a ZINK® Zero Ink® printer <ul style="list-style-type: none">• Note: The HP Sprocket Photo Printer does not use ink cartridges to print.
Supported paper	HP ZINK® Sticky Backed Photo Paper 5.0 x 7.6 cm (2 x 3 in)
Borderless printing	Yes
Supported file types	.jpeg, .tiff (iOS only), .gif, .bmp, and .png <ul style="list-style-type: none">• Note: If you send a non-supported file type, the print job does not print.
Paper tray capacity	Up to 10 pages with the Smartsheet®
Memory	Up to 512 MB
Print quality	313 x 400 dots per inch (dpi)
Mobile operating systems	Android™ v4.4 and above iOS v8.0 and later
Control panel	Power button Reset button Charge and status light indicators
Environmental parameters	<ul style="list-style-type: none">• Operating humidity: 5% to 70% RH (recommended)• Non-operating humidity: 5% to 90% RH• Operating temperature: 5° to 40° C (41° to 104° F)• Recommended operating temperature: 15° to 32° C (59° to 90° F)• Storage temperature: -30° to 70° C (-22° to 158° F)
Warranty	One-year limited hardware warranty Visit hpsprocket.com for more information.
Regulatory Model Number	For regulatory identification purposes, your product is assigned a Regulatory Model Number. The Regulatory Model Number for your product is SNPRH-1603. <ul style="list-style-type: none">• Note: This regulatory number should not be confused with the marketing name (HP Sprocket Photo Printer) or product numbers (X7N07A and X7N08A).

TBD
NEED CONTENT
DELIVERED

Troubleshooting and FAQs

What if the printer will not print?

- **Turn on the printer.** By default, the printer is set to turn off after 5 minutes. To change when the printer automatically turns off, open the HP sprocket app on your mobile device. Tap , tap **sprocket**, and then tap **Auto Off**. Select when you want the printer to turn off.
- **Charge the printer.**
- **Confirm Bluetooth is turned on and paired with your printer.** If the printer is already paired to your mobile device, turning Bluetooth off and then on might resolve the issue.
- **Make sure the printer has photo paper in the input tray.** Load up to 10 sheets of photo paper with the blue HP ZINK® Smartsheet.
- **Move the printer and your mobile device closer together.** Bluetooth signals can be weaker at greater distances.
- **Update the printer firmware.** Make sure your mobile device is connected to the Internet and then open the HP sprocket app. If there is a firmware update available, a firmware update screen displays. Follow the on-screen prompts to complete the update. Your printer must be charged to 50% or higher before a firmware update.
- **Reset the printer.** On the printer, locate the pin-hole **under the top cover**, insert a straight pin into the hole to press the reset button until the printer turns off. Restart the printer.

What can I do to improve print quality?

Use these recommendations and the sprocket app editing capabilities to help improve print quality.

- **Use genuine HP ZINK® Sticky-Backed Photo Paper.** ZINK® makes custom photo paper for a variety of printers, such as Polaroid, LG, and HP. HP recommends using HP ZINK® Sticky-Backed Photo Paper for best results. To purchase genuine HP ZINK® Sticky-Backed Photo Paper, go to the hpsprocket.com homepage. You can also purchase genuine HP ZINK® Sticky-Backed Photo Paper from other retailers.
- **Always load the blue HP ZINK® Smartsheet from the same pack of photo paper currently in the printer.** Load the blue HP ZINK® Smartsheet into the input tray with the bar code facing down and the photo paper with the print side facing up, and then send a print job.
- **Allow the printer a few minutes to cool down between print jobs.**
- **Store the photo paper in a cool, dry place and avoid contact with water.** If water spills on a photo, wipe it away as soon as possible to prevent damaging the photo.
- **Update the printer firmware.**

How do I clear a paper jam?

If the printer stops feeding pages, it might be jammed. Clear paper jam and restart the printer by **sliding** and holding the power button.

1. On the HP Sprocket app, press **OK** to clear the error message.
2. Turn off the printer.
3. Remove the top cover by sliding it away from the output slot, and then set it aside.
4. Remove any loose photo paper from the input tray, and then set aside if necessary.
5. Gently remove the jammed paper from the input tray.
6. Reload the remaining photo paper with the print side facing up.
7. Align the top cover with the tracks on the outside of the printer, and then slide the top cover toward the output slot until it is firmly seated.
8. Turn on the printer.

See page 2 for paper loading illustrations.

Can I print to more than one printer?

Yes. You can connect and print to more than one printer, but you cannot connect to multiple printers at the same time.

How do I attach a lanyard to my printer?

Attach the lanyard to your printer to secure the printer to your wrist, carabiner, etc.

1. Turn off the printer and remove the top cover by sliding it away from the output slot.
2. Remove any loose photo paper from the input tray and locate the lanyard attachment point at the top of the printer.
3. With the lanyard in one hand, thread the smaller lanyard loop through the hole in the printer until approximately half of the lanyard is through the hole. Thread one end through the opposite end of the lanyard.
4. Tighten the lanyard by pulling the opposite end.
5. Reload the remaining photo paper with the print side facing up, align the top cover with the tracks on the outside of the printer and then slide the top cover toward the output slot until it is firmly seated. Turn on the printer.



Federal Communication Commission Interference Statement

This device complies with Part 15 of the FCC Rules. Operation is subject to the following two conditions: (1) This device may not cause harmful interference, and (2) this device must accept any interference received, including interference that may cause undesired operation.

This equipment has been tested and found to comply with the limits for a Class B digital device, pursuant to Part 15 of the FCC Rules. These limits are designed to provide reasonable protection against harmful interference in a residential installation. This equipment generates, uses and can radiate radio frequency energy and, if not installed and used in accordance with the instructions, may cause harmful interference to radio communications. However, there is no guarantee that interference will not occur in a particular installation. If this equipment does cause harmful interference to radio or television reception, which can be determined by turning the equipment off and on, the user is encouraged to try to correct the interference by one of the following measures:

- Reorient or relocate the receiving antenna.
- Increase the separation between the equipment and receiver.
- Connect the equipment into an outlet on a circuit different from that to which the receiver is connected.
- Consult the dealer or an experienced radio/TV technician for help.

FCC Caution: Any changes or modifications not expressly approved by the party responsible for compliance could void the user's authority to operate this equipment.

This transmitter must not be co-located or operating in conjunction with any other antenna or transmitter.

Radiation Exposure Statement:

The product comply with the FCC portable RF exposure limit set forth for an uncontrolled environment and are safe for intended operation as described in this manual. The further RF exposure reduction can be achieved if the product can be kept as far as possible from the user body or set the device to lower output power if such function is available.

Industry Canada statement:

This device complies with ISED's licence-exempt RSSs. Operation is subject to the following two conditions: (1) This device may not cause harmful interference, and (2) this device must accept any interference received, including interference that may cause undesired operation.

Le présent appareil est conforme aux CNR d'ISED applicables aux appareils radio exempts de licence. L'exploitation est autorisée aux deux conditions suivantes : (1) le dispositif ne doit pas produire de brouillage préjudiciable, et (2) ce dispositif doit accepter tout brouillage reçu, y compris un brouillage susceptible de provoquer un fonctionnement indésirable.

Radiation Exposure Statement:

The product comply with the Canada portable RF exposure limit set forth for an uncontrolled environment and are safe for intended operation as described in this manual. The further RF exposure reduction can be achieved if the product can be kept as far as possible from the user body or set the device to lower output power if such function is available.

Déclaration d'exposition aux radiations:

Le produit est conforme aux limites d'exposition pour les appareils portables RF pour les Etats-Unis et le Canada établies pour un environnement non contrôlé.

Le produit est sûr pour un fonctionnement tel que décrit dans ce manuel. La réduction aux expositions RF peut être augmentée si l'appareil peut être conservé aussi loin que possible du corps de l'utilisateur ou que le dispositif est réglé sur la puissance de sortie la plus faible si une telle fonction est disponible.

低功率電波輻射性電機管理辦法

第十二條 經型式認證合格之低功率射頻電機，非經許可，公司、商號或使用者均不得擅自變更頻率、加大功率或變更原設計之特性及功能。

第十四條 低功率射頻電機之使用不得影響飛航安全及干擾合法通信；經發現有干擾現象時，應立即停用，並改善至無干擾時方得繼續使用。

前項合法通信，指依電信法規定作業之無線電通信。

低功率射頻電機須忍受合法通信或工業、科學及醫療用電波輻射性電機設備之干擾。