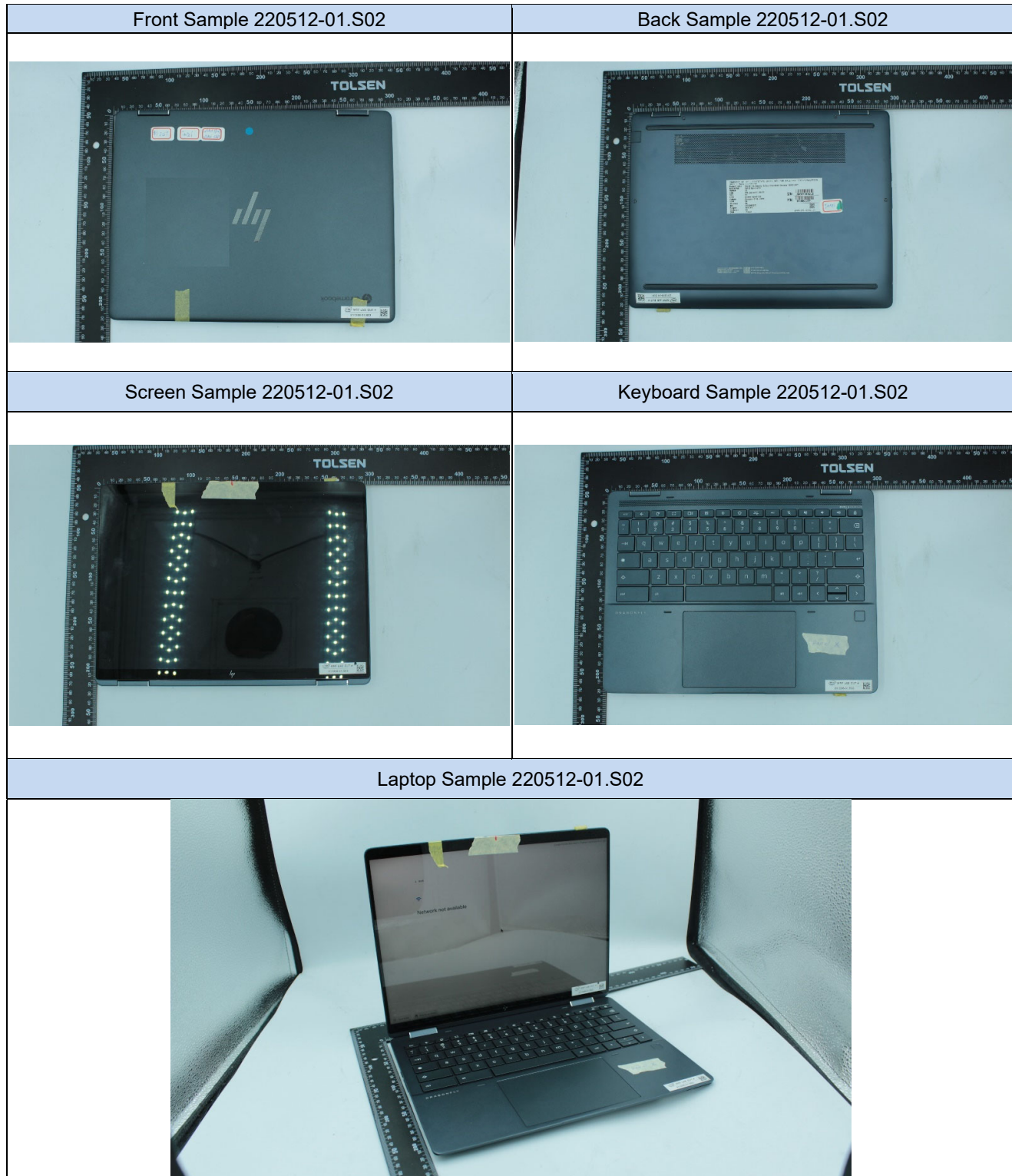


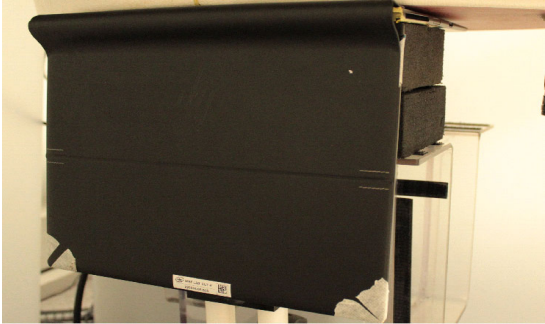
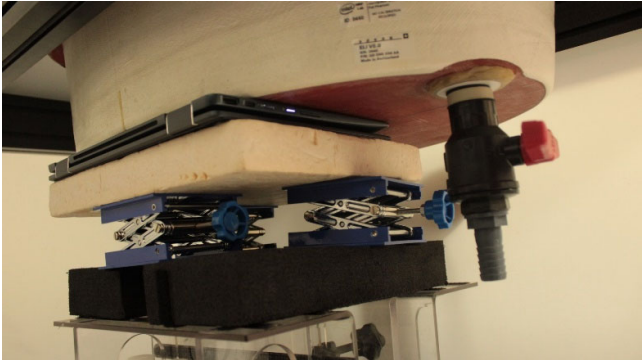
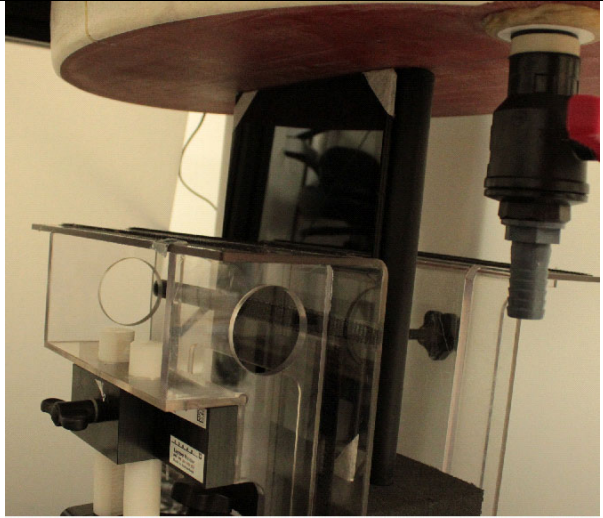
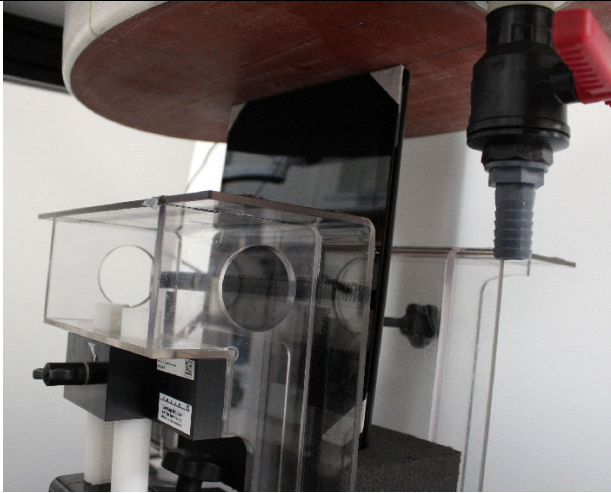
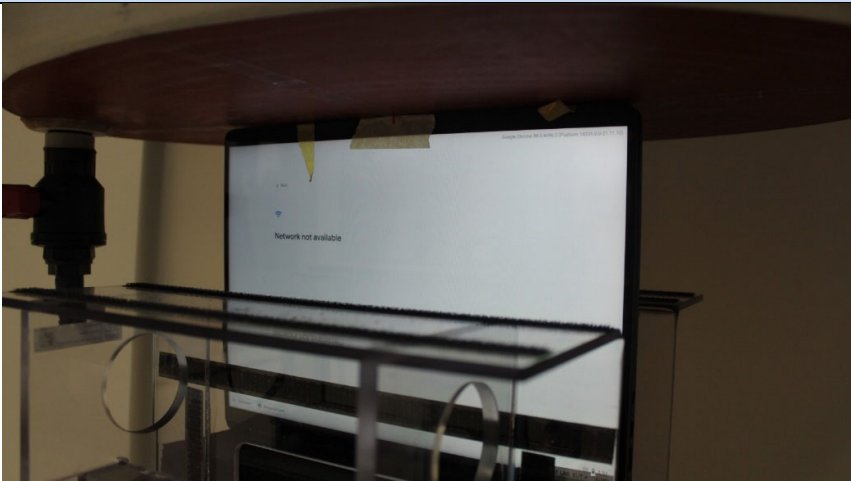
Annex F. Photographs

F.1 Test Samples



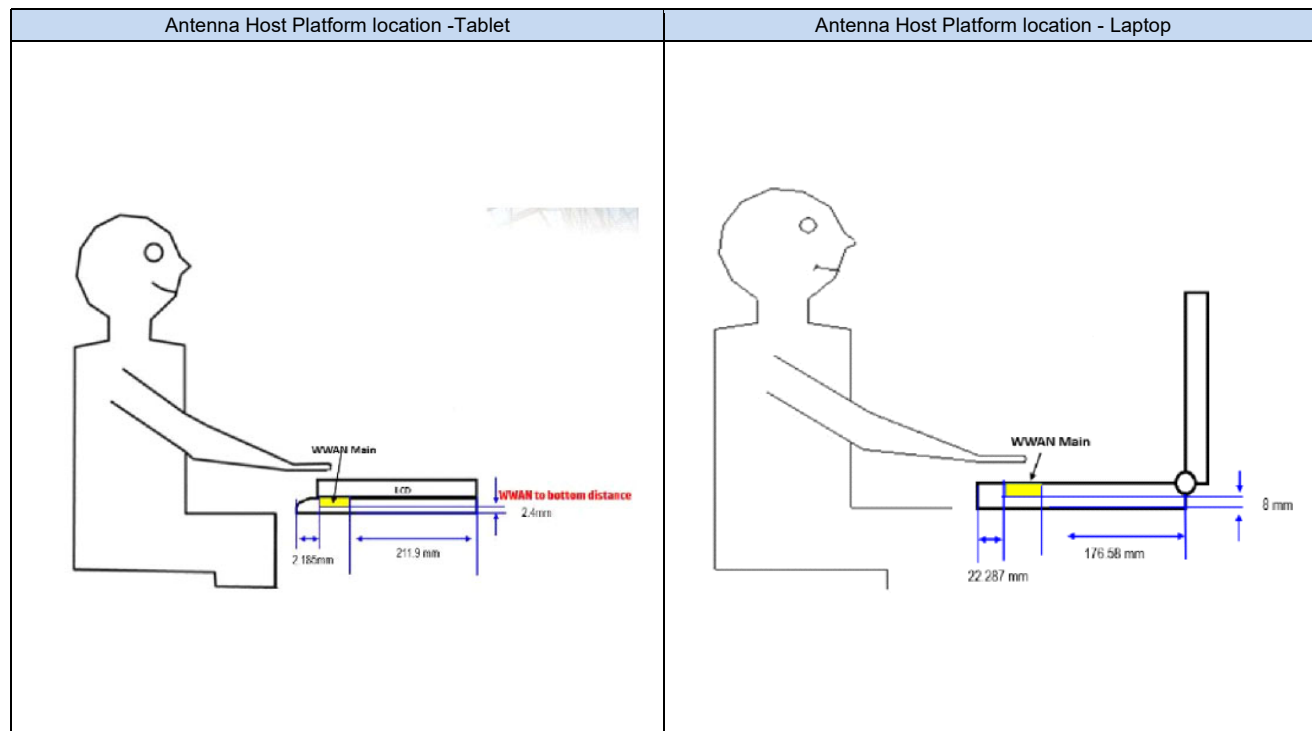
<p>Front Sample 220512-01.S03</p> 	<p>Back Sample 220512-01.S03</p> 
<p>Screen Sample 220512-01.S03</p> 	<p>Keyboard Sample 220512-01.S03</p> 
<p>Laptop Sample 220512-01.S03</p> 	

F.2 Test positions

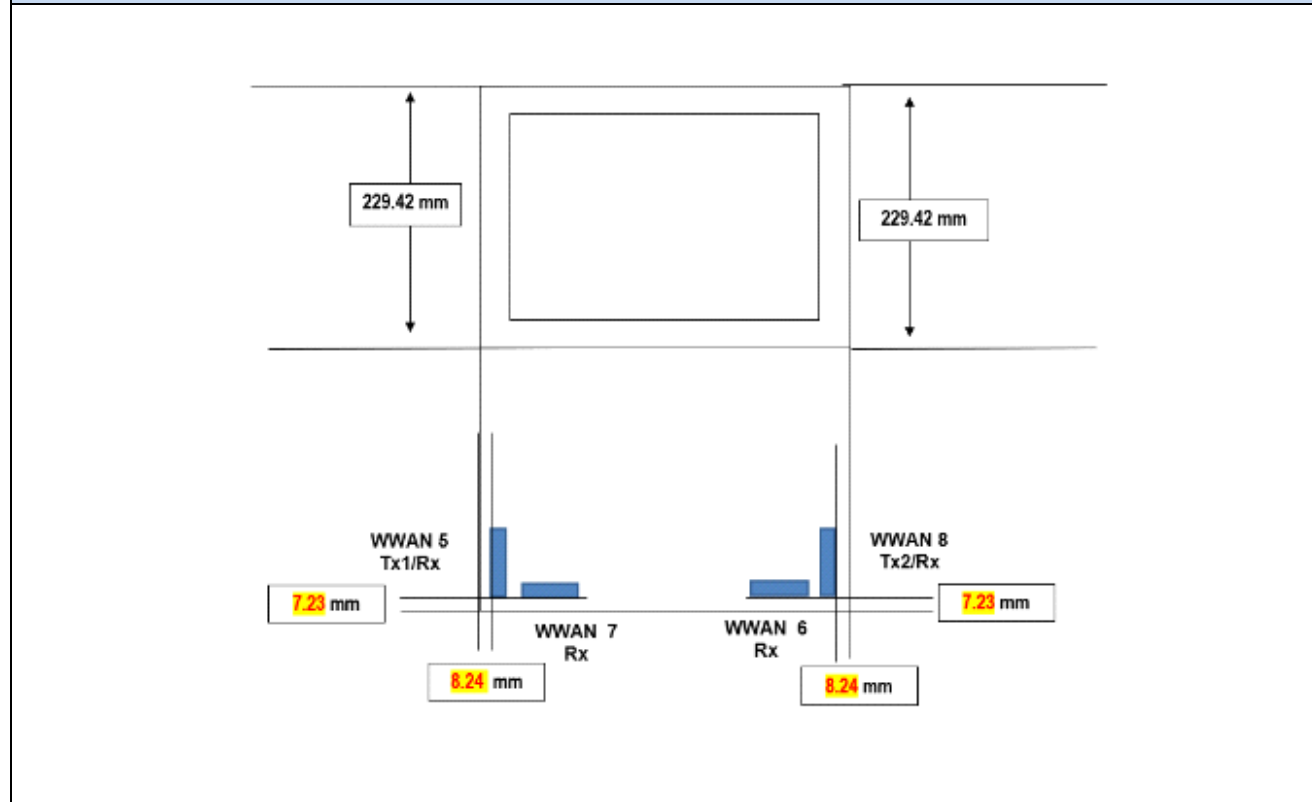
Laptop	Back Face
 <p>A photograph showing the back of a black laptop mounted on a test rig. The laptop is positioned horizontally, and its back cover is visible.</p>	 <p>A photograph showing the back face of the laptop. A black probe with a red handle is positioned to make contact with the back of the device. The laptop is mounted on a blue metal frame.</p>
Left Edge	Right Edge
 <p>A photograph showing the left edge of the laptop. A black probe with a red handle is positioned to make contact with the left edge of the device. The laptop is mounted on a blue metal frame.</p>	 <p>A photograph showing the right edge of the laptop. A black probe with a red handle is positioned to make contact with the right edge of the device. The laptop is mounted on a blue metal frame.</p>
Top Edge	
 <p>A photograph showing the top edge of the laptop. A black probe with a red handle is positioned to make contact with the top edge of the device. The laptop is mounted on a blue metal frame. The screen of the laptop is visible, displaying the text "Network not available".</p>	

F.3 Antenna host platform location and adjacent edge positions relative to the body

All information (diagrams, values and dimensions) in this section were provided by the manufacturer

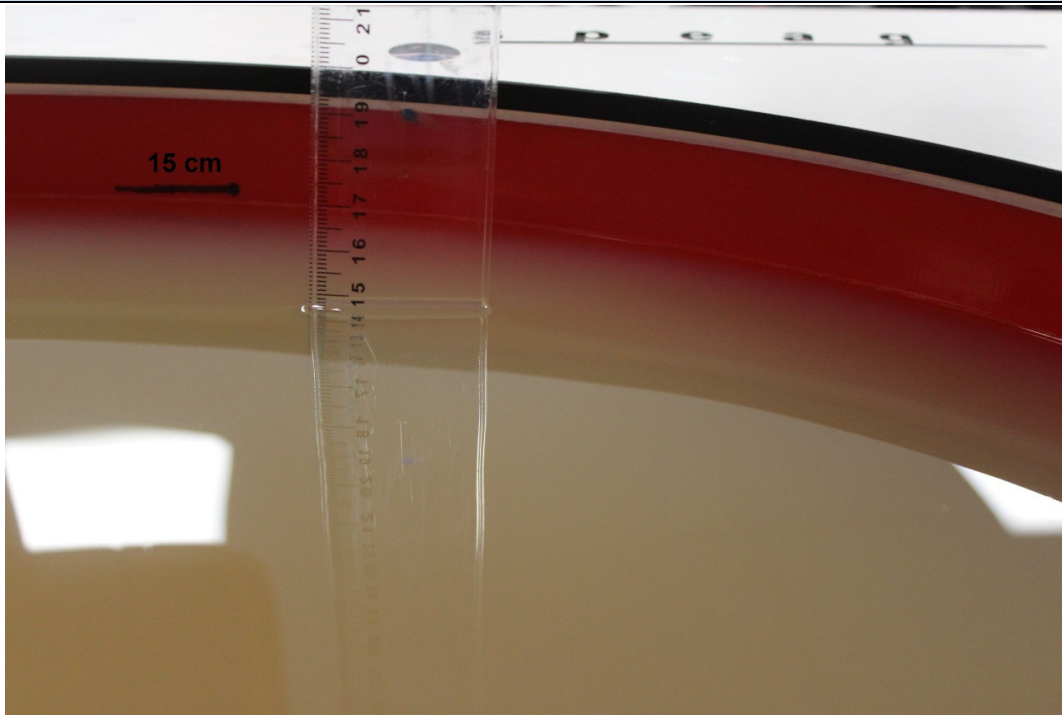


Antenna Host Platform location

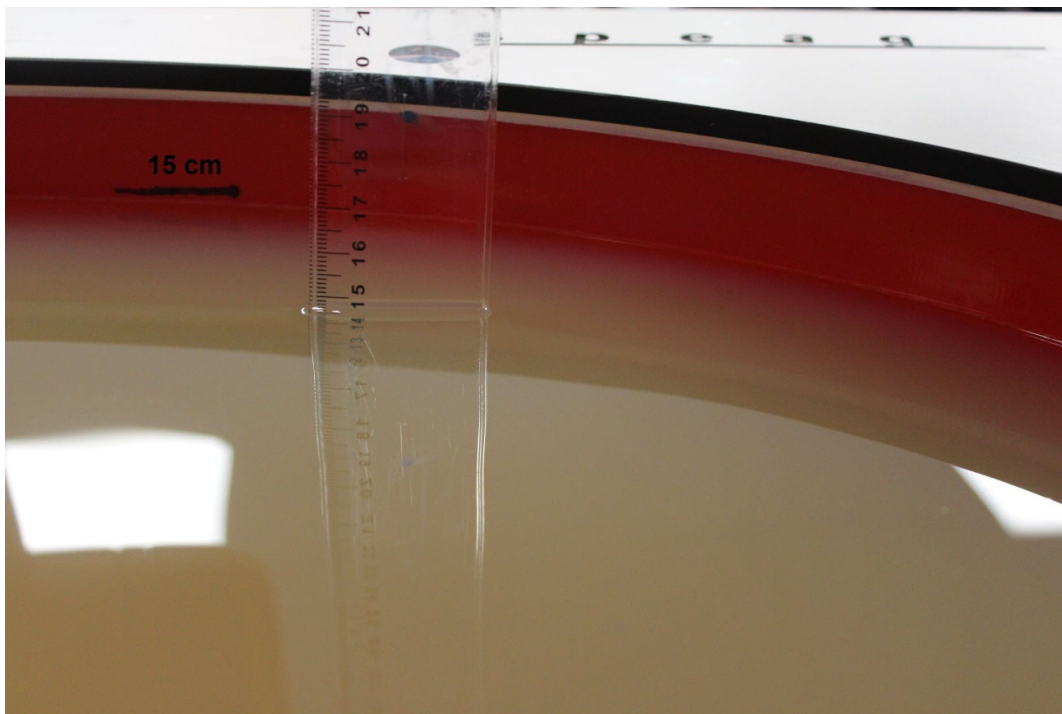


F.4 Phantom liquid level during measurements

ELI phantom Body liquid SAR Dasy SPEAG MBL600-6000V6 Batch - 191014-02



ELI phantom Body liquid SAR Dasy SPEAG MBL600-6000V6 Batch - 160630-01



End of the report

This page is intentionally left blank and marks the last page of the test report.