

Application note

WIFI Antenna

Covered frequency range:
2.4GHz & 5GHz

Pulse Part Number: **SZ07751**

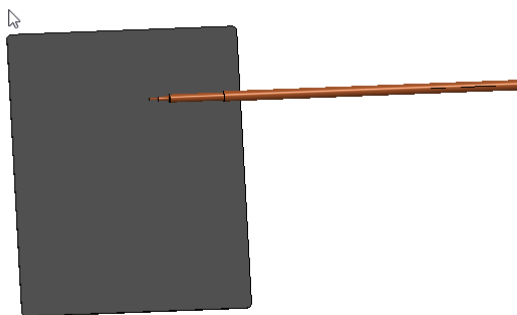


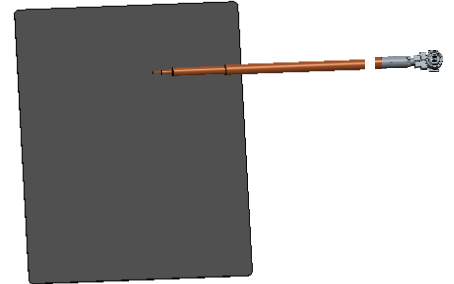
Table of Contents

<i>General Features and Applications.....</i>	<i>3</i>
<i>Antenna Dimensions and Coaxial Feed Cable</i>	<i>3</i>
<i>Test Setup for Electrical Measurements</i>	<i>3</i>
<i>Electrical Performance Test Results</i>	<i>4</i>
<i>Contact Information.....</i>	<i>5</i>

WIFI Antenna

Features

- Coaxial Feed
- Single Feed Point
- **Total size W x L x H (46mm x 24.60mm x 1.36mm)**
- **Antenna size W x L x H (46mm x 24.60mm x 0.13mm)**
- Not include cable
- Lead Free Materials
- Lead Free Soldering Compatible
- RoHS Compliant
- Coaxial Cable Connector:
- I.PEX Connector MHF- Series Compatible



Applications

WIFI

Electrical specifications @ +25 °C

Note: Antenna's electrical characteristics depend on test board ground plane (GP) size, antenna positioning in relative to GP, antenna distance to test board and antenna surrounding mechanics.

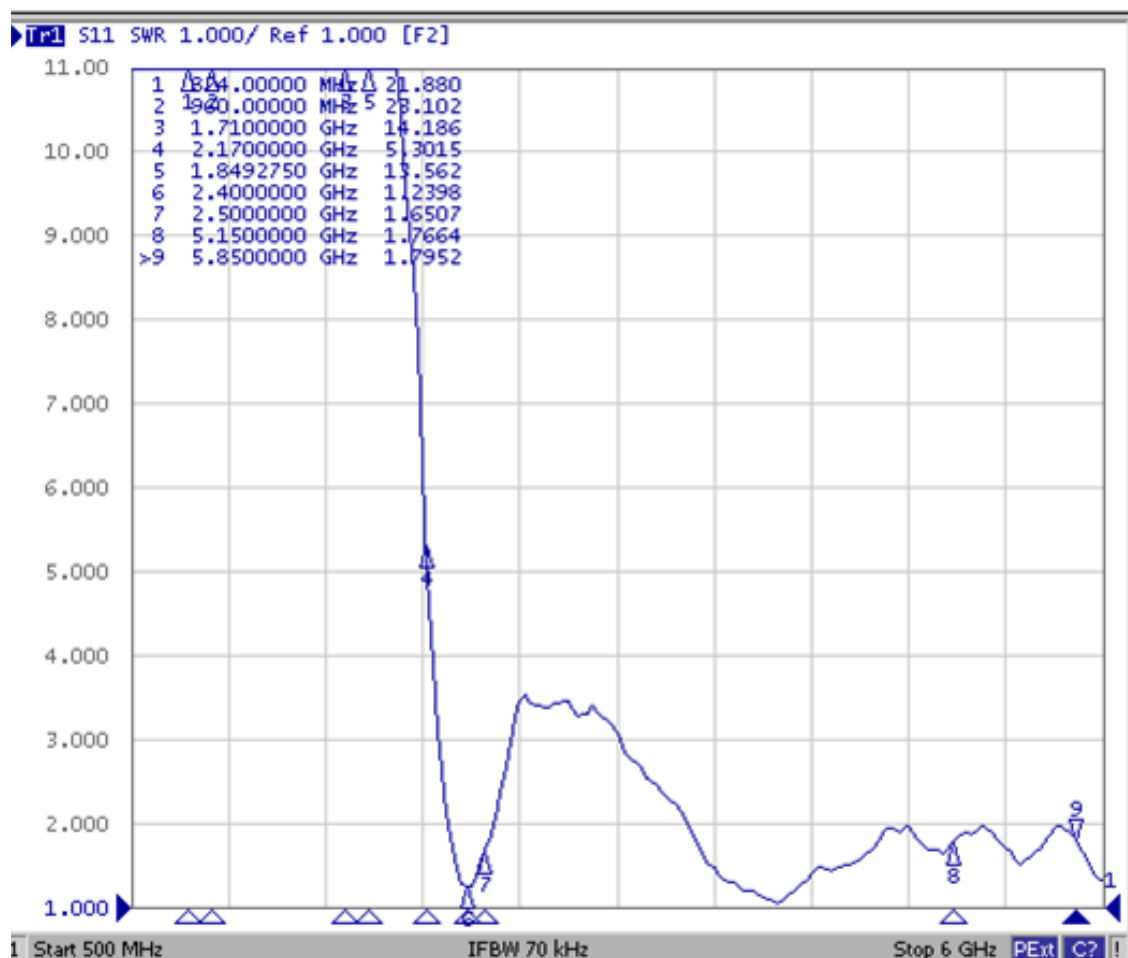
Frequency	Freq 1	2400-2500 MHz
	Freq 2	4900-5900 MHz
Nominal Impedance Ω		50
VSWR		2.5:1 Max
Gain (dBi) Average(Peak)	Freq 1	2.5
	Freq 2	3.8
Efficiency (%) Average	Freq 1	40
	Freq 2	45
Power Rating , Watts		2, max

Environmental Specifications

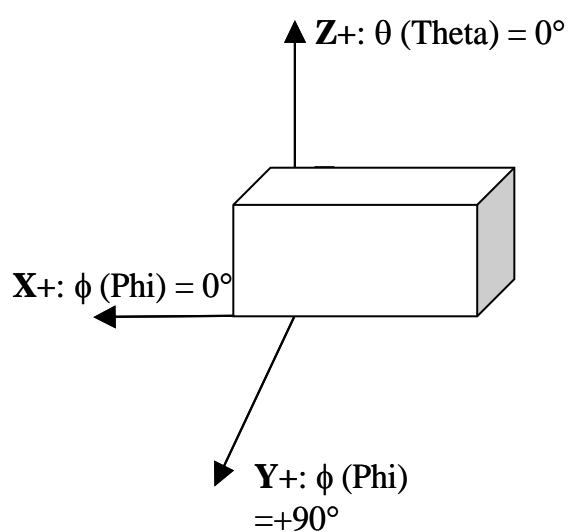
Operating Temperature (°C)	-40 / +85
----------------------------	-----------

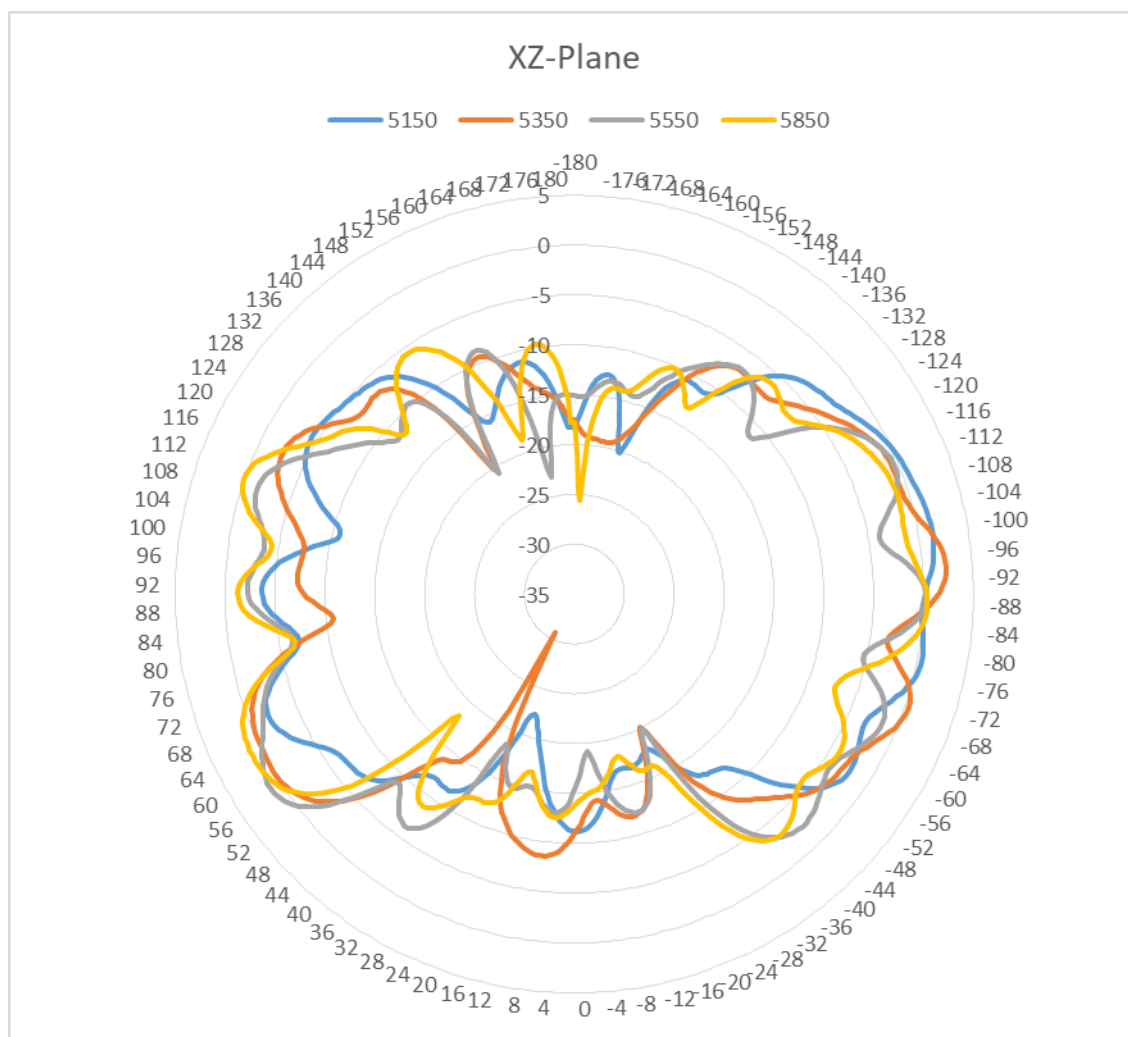
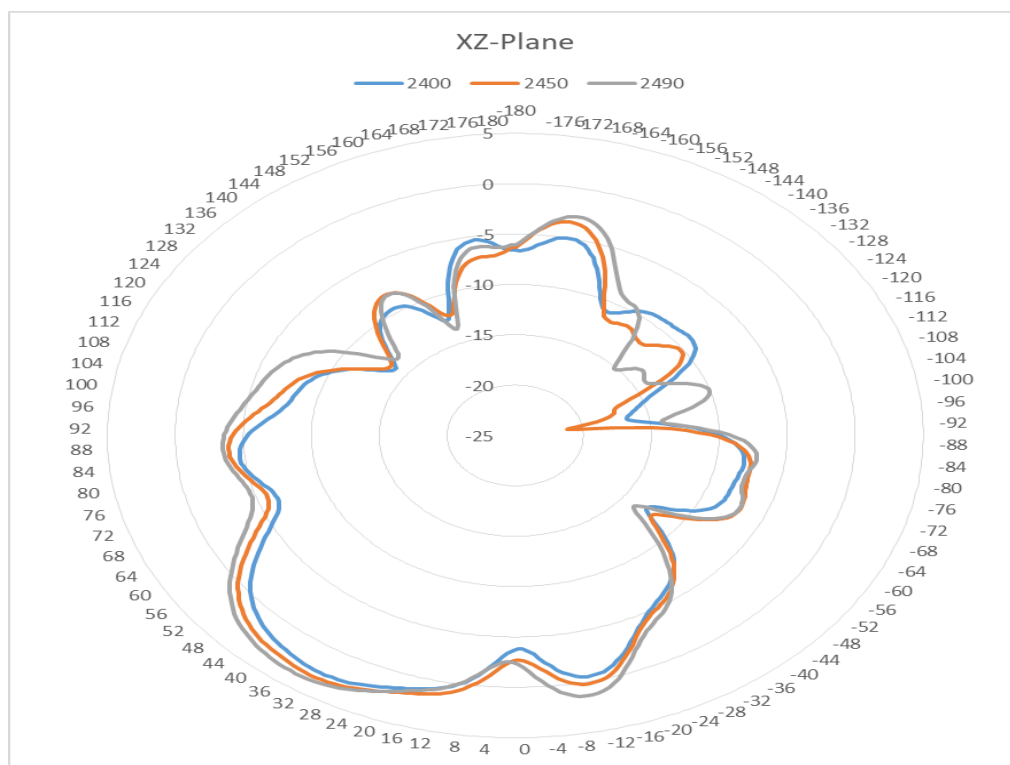
SZ0595D: Typical electrical characteristics

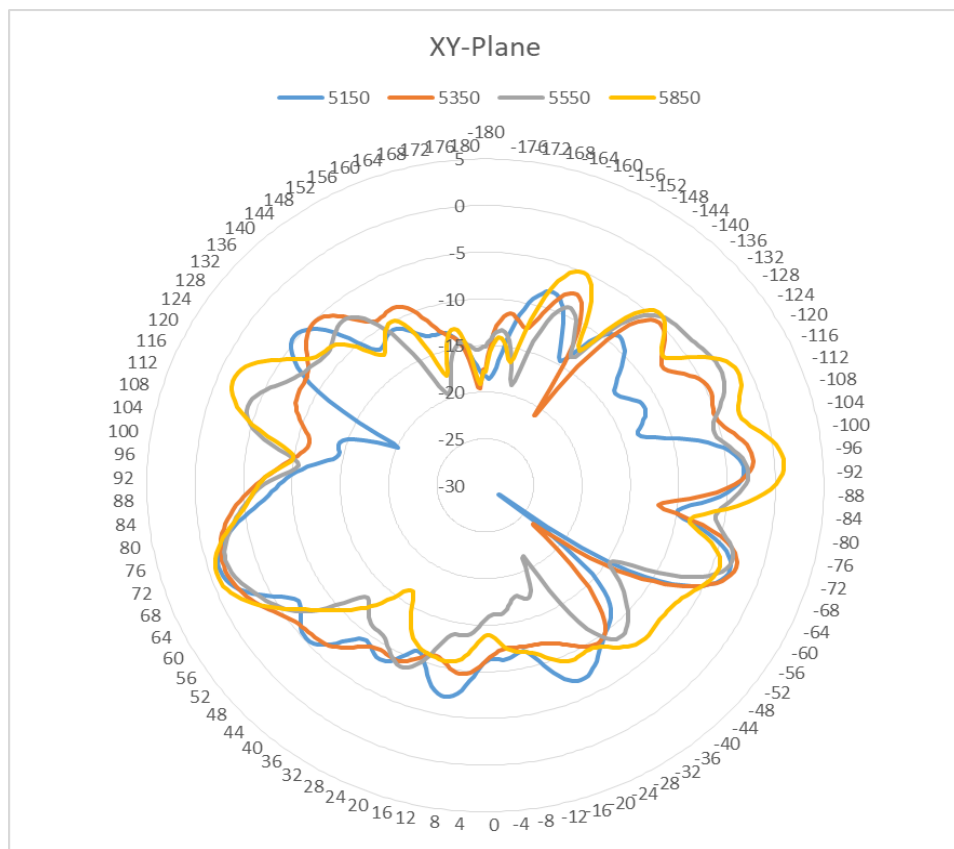
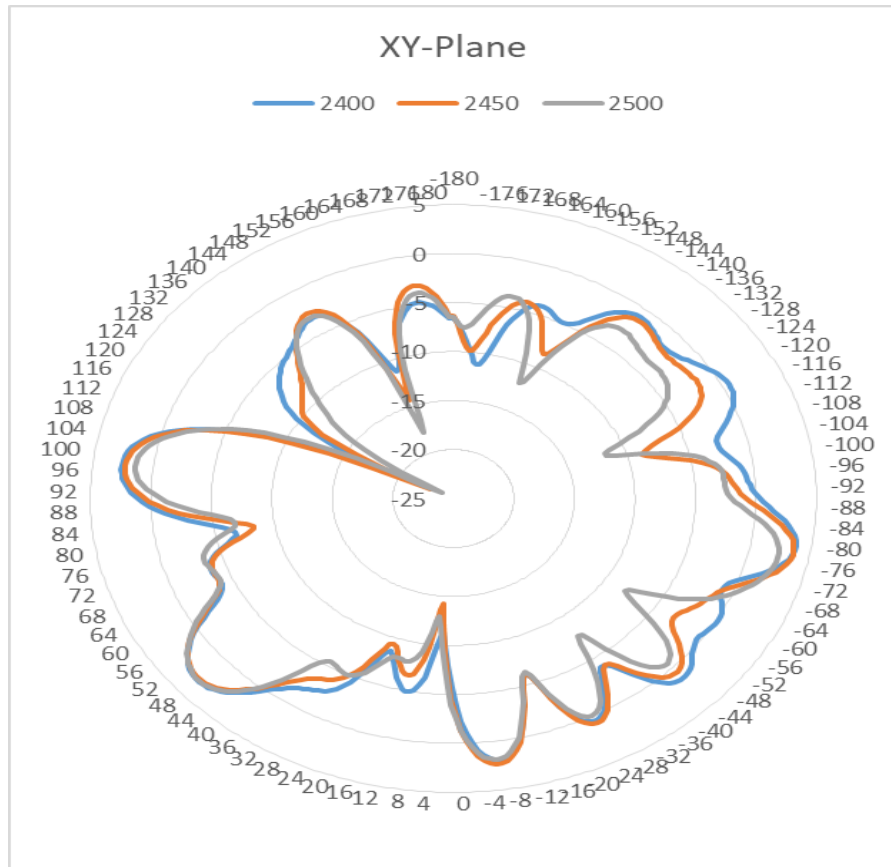
Test surrounding base on 1mm plastic frame

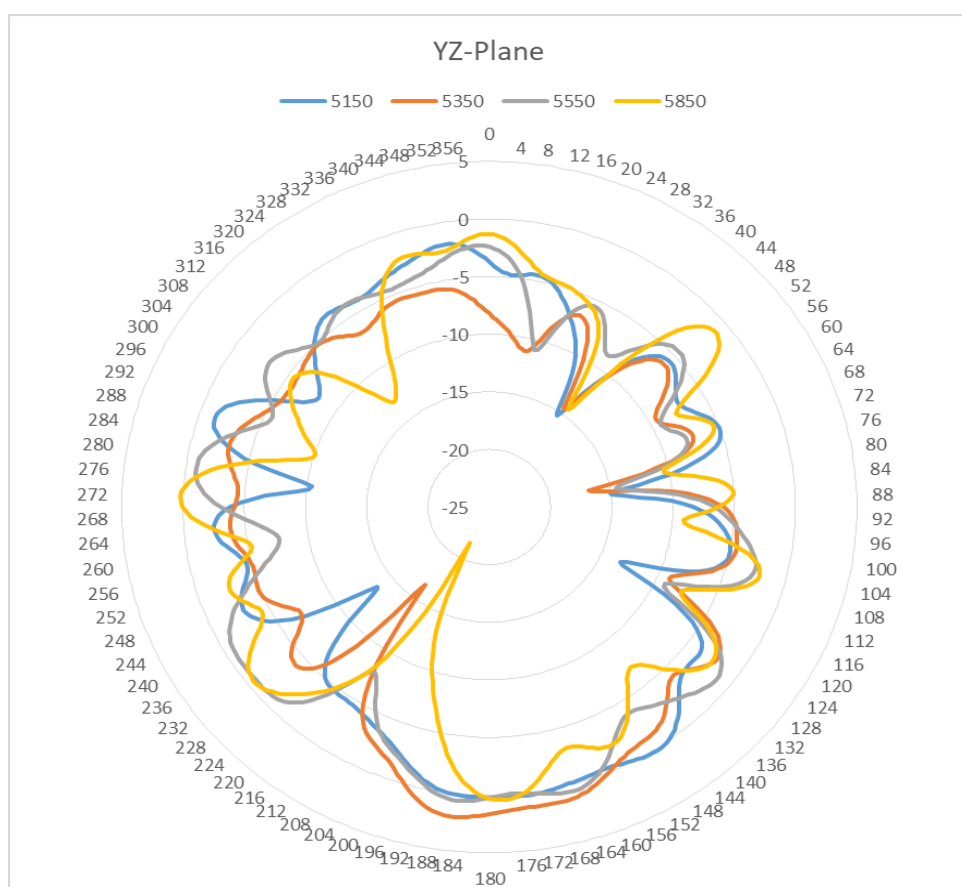
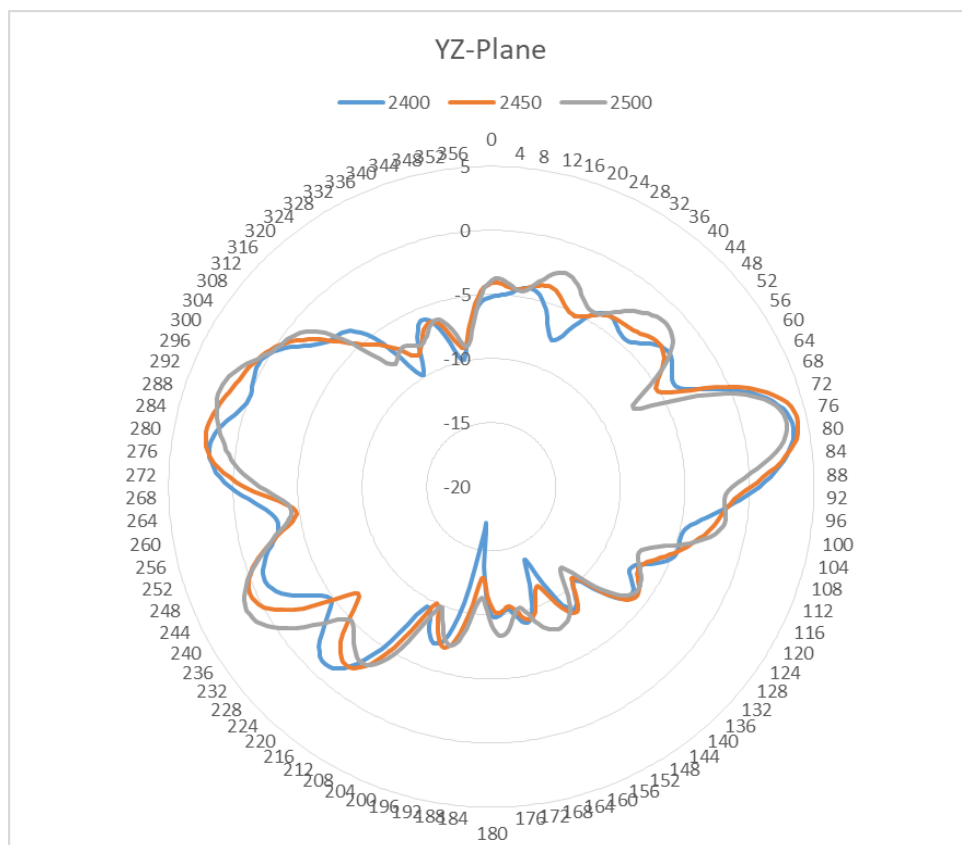


Typical Free space Radiation Patterns

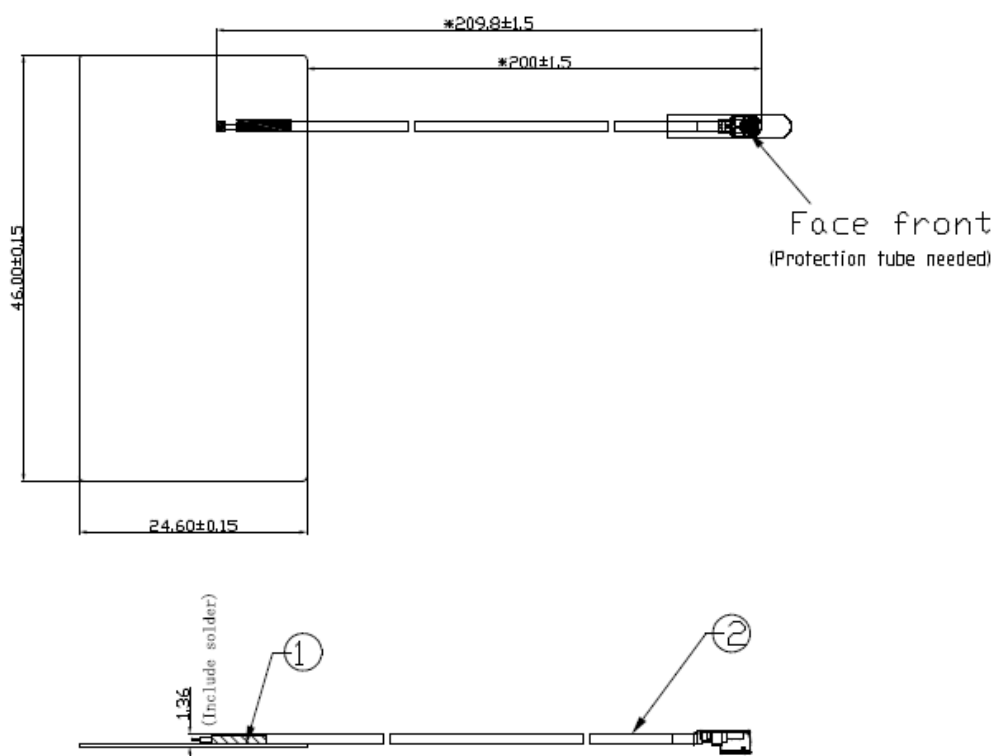








Antenna Dimensions and Coaxial Feed Cable



Cable length (to FPC edge)	Connector type
200mm	I-PEX (20278-112R-13)

For More Information, please contact:

Pulse Electronics (Suzhou)
No.99 Huo Ju Road, Suzhou New District
Jiangsu Province, Suzhou P.R. China

www.pulseelectronics.com