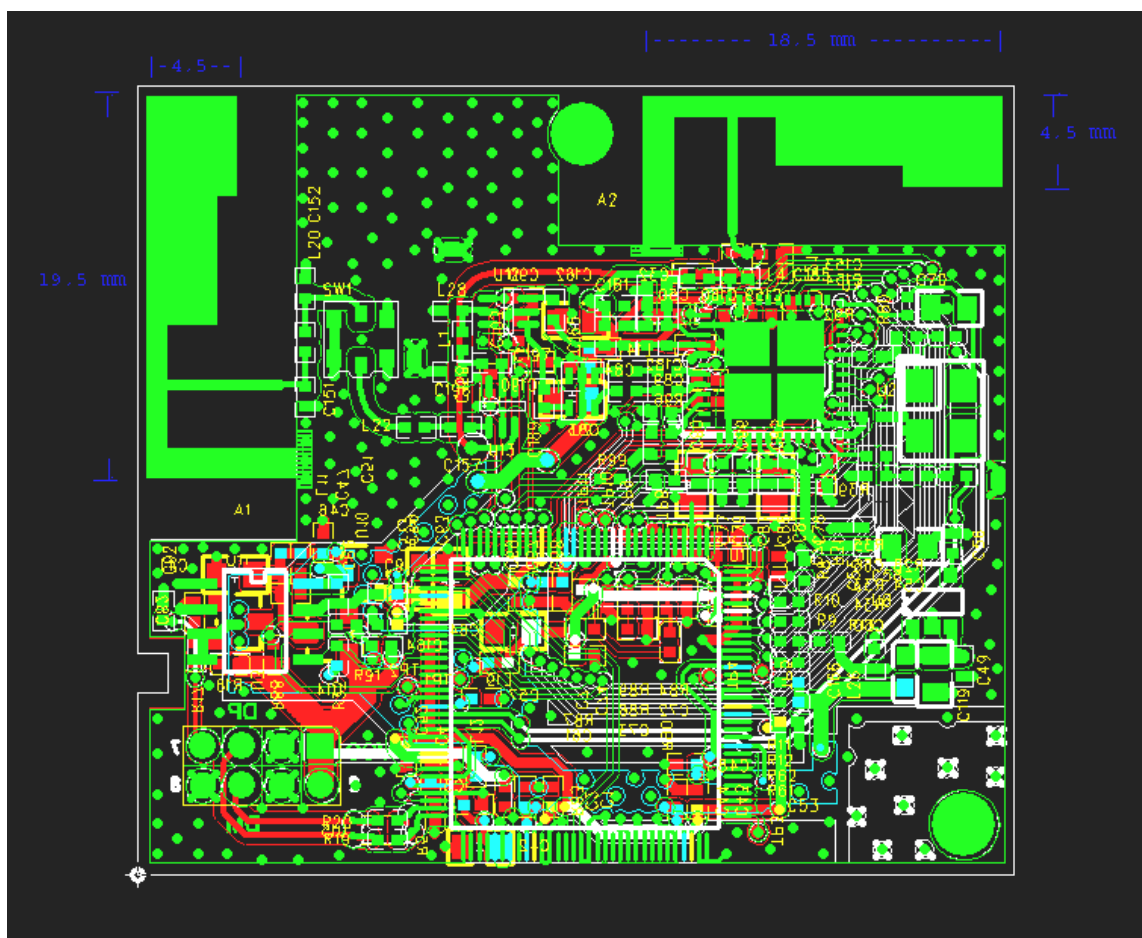


HP WLAN 2.4Ghz PCB PIFA V1.0 Antenna Design

Antenna A1

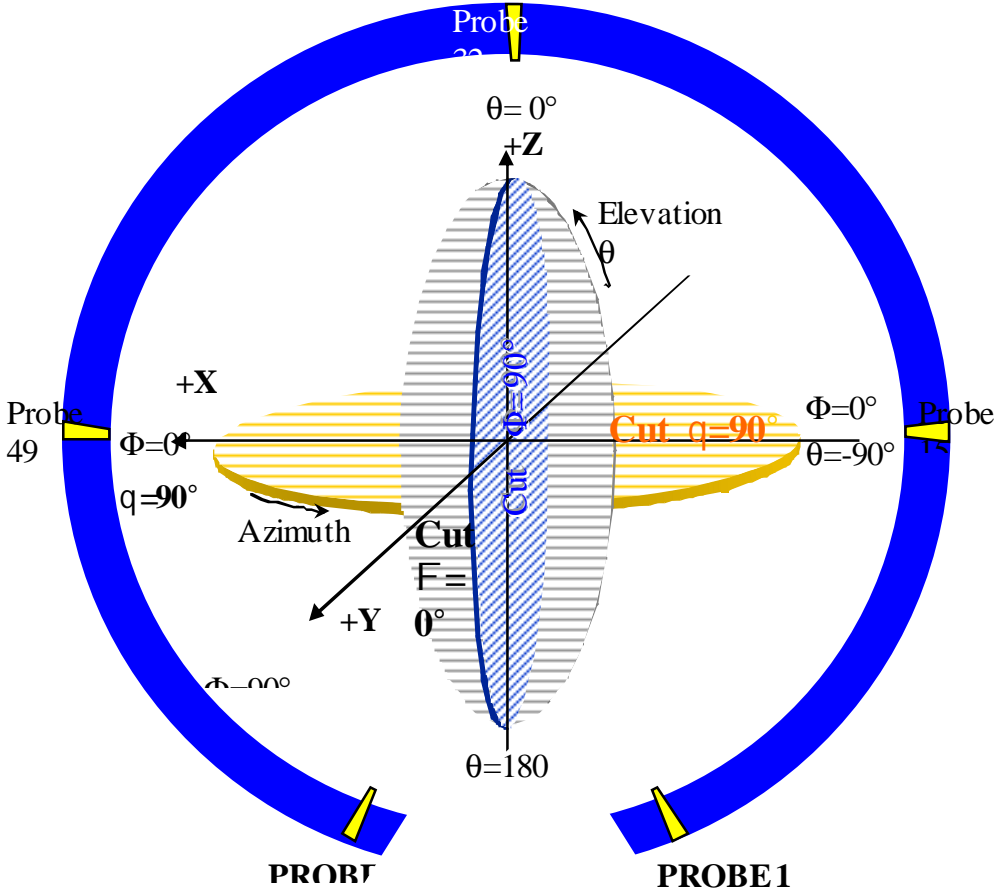
Antenna A2



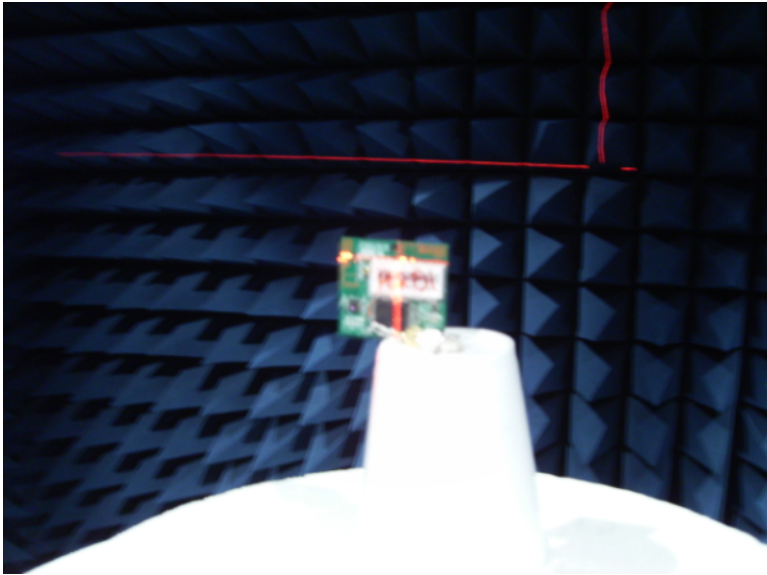
Features

- Dual PIFA PCB antennas
 - Orthogonal antenna orientation for diversity coverage
 - 2.4-2.5 GHz Frequency Range
 - VSWR better than 2:1 across range
 - Efficiency > 65%
 - Typical Gain 2.2 DBI across frequency range
-

SATIMO Chamber Coordinate system

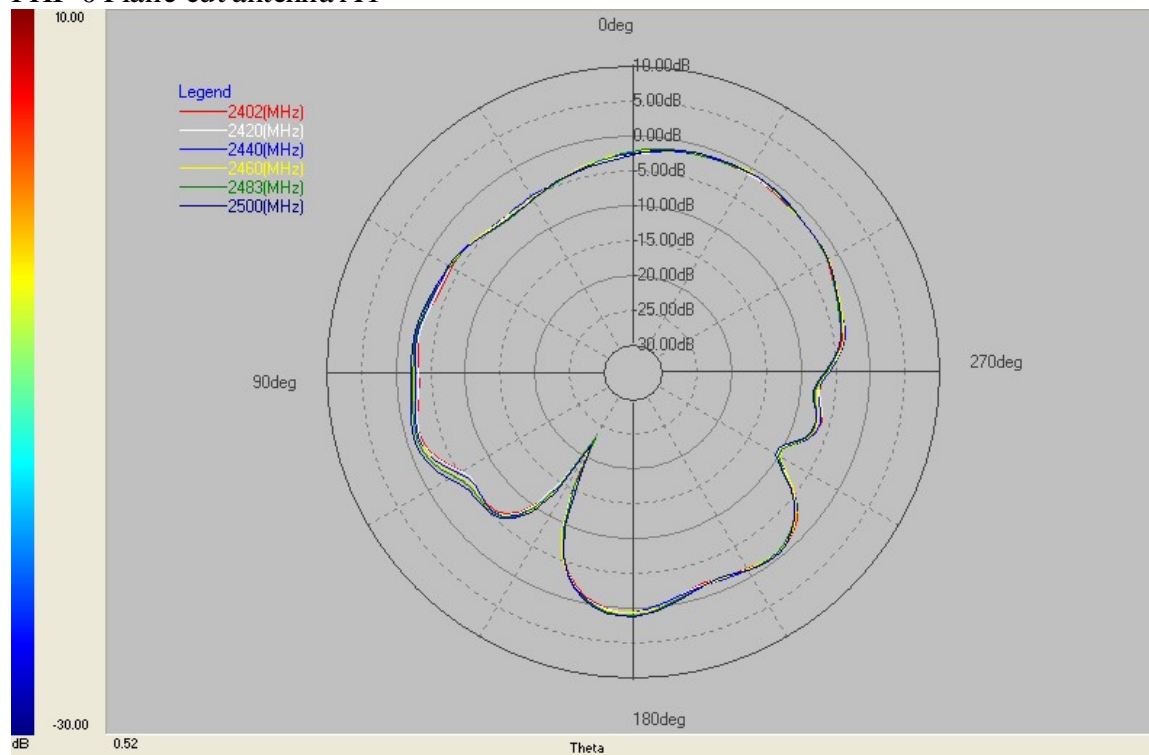


Antenna test Chamber Position (Board in XZ plane)

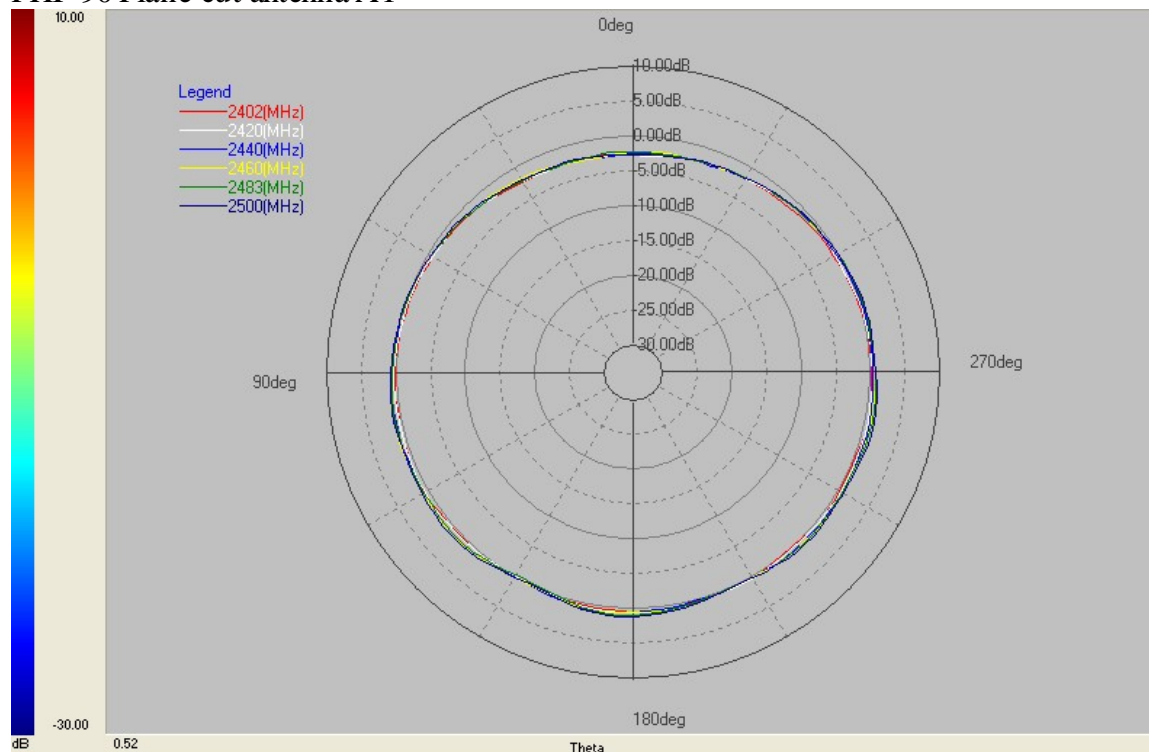


Antenna A1 Gain Measurements (18SEP07):

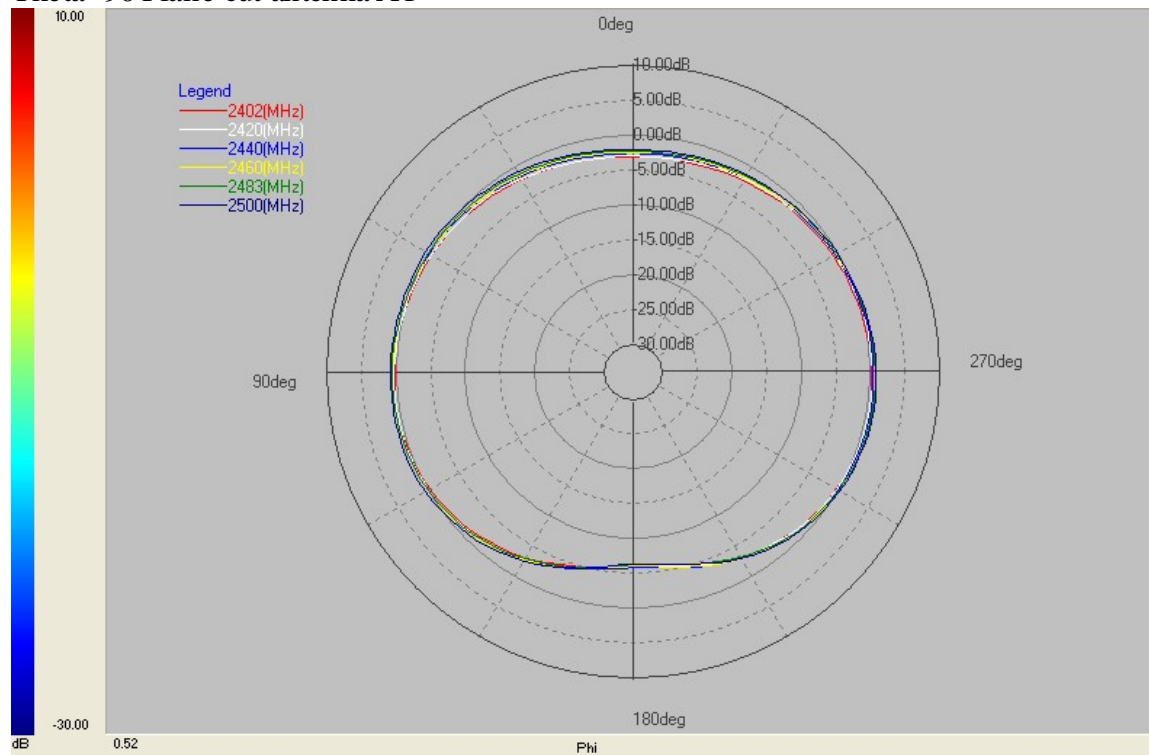
PHI=0 Plane cut antenna A1



PHI=90 Plane cut antenna A1

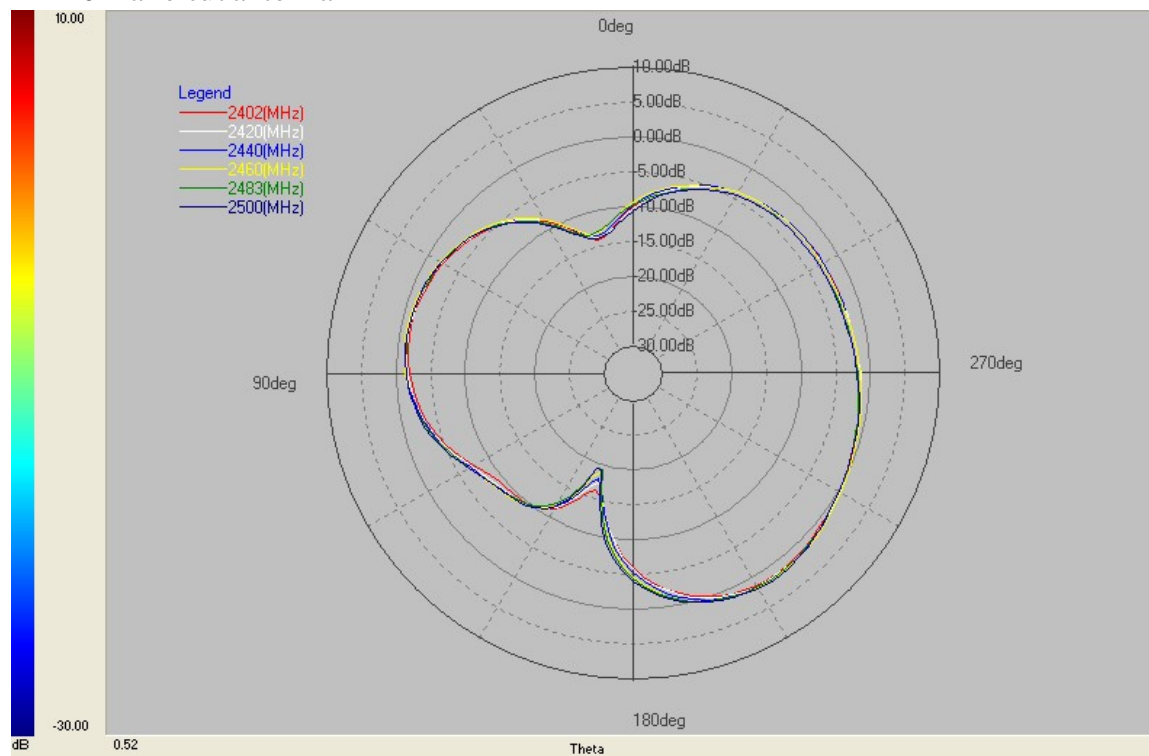


Theta=90 Plane cut antenna A1

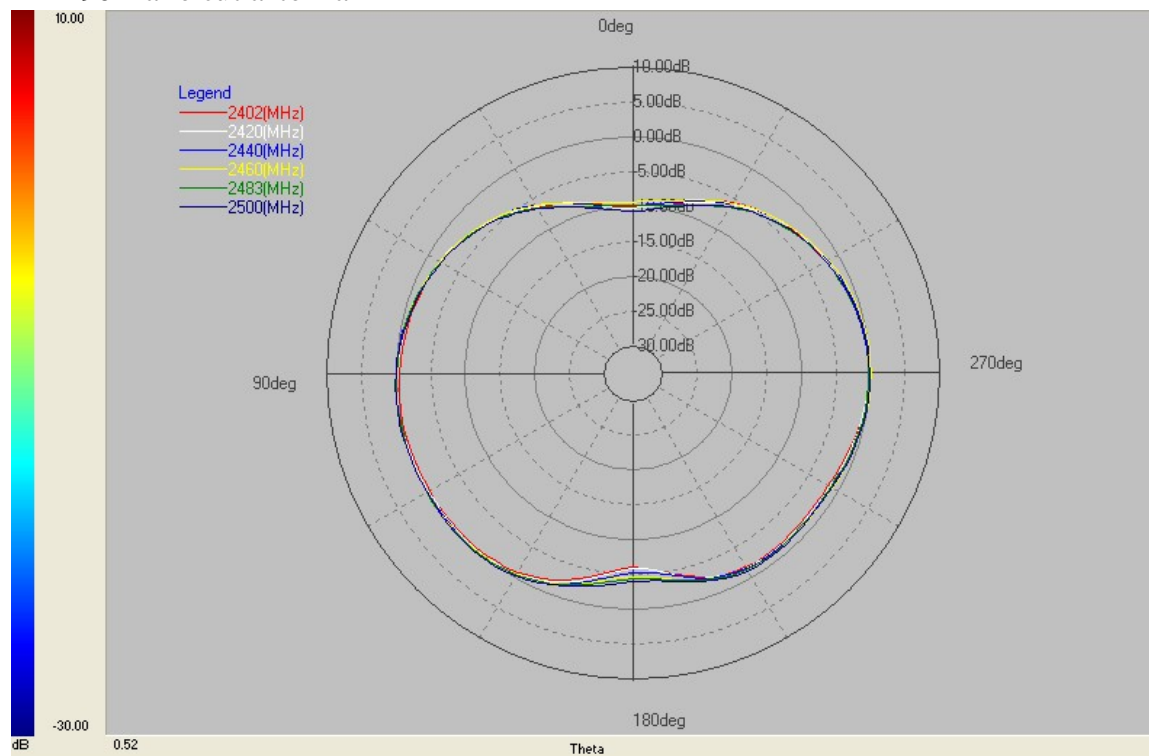


Antenna A2 Gain Measurements (09OCT07):

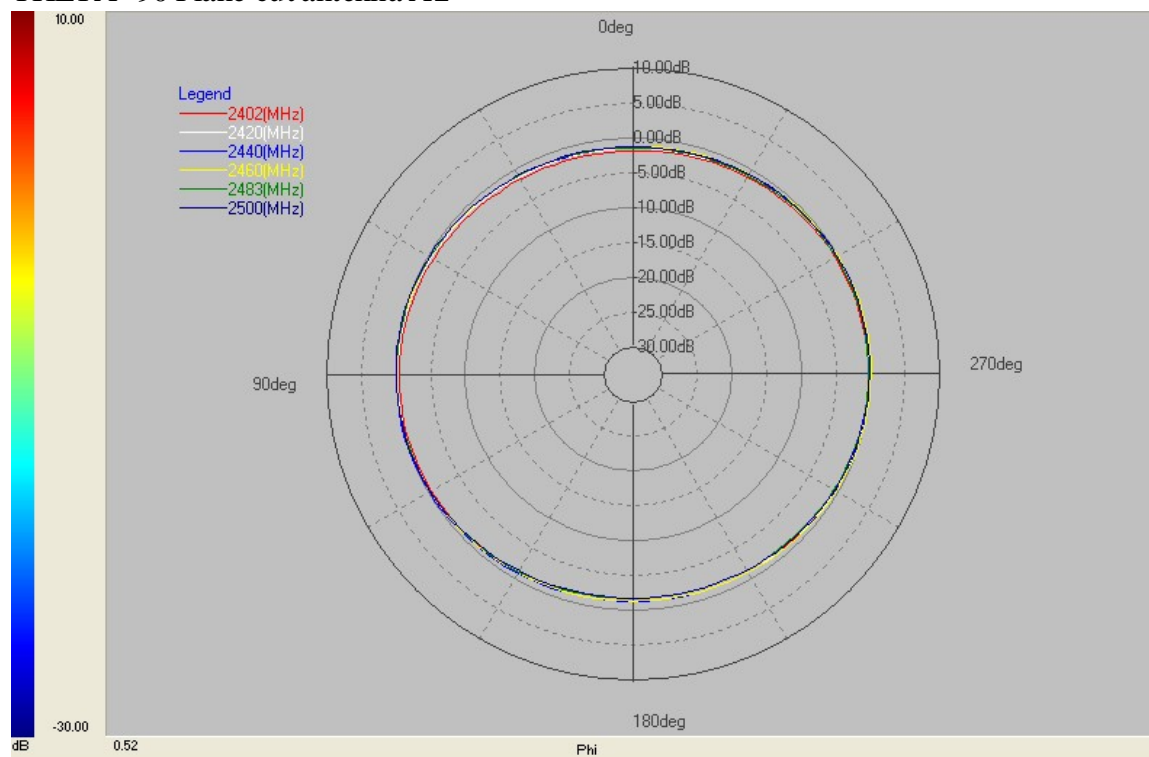
PHI=0 Plane cut antenna A2



PHI=90 Plane cut antenna A2



THETA=90 Plane cut antenna A2



Generated by Satimo. 10/9/2007 4:55:50 PM. with Satenv (c) [METRAWARE](http://www.metraware.com) & [SATIMO](http://www.satimo.com) 2001.
<mailto:info@metraware.com>

HP Restricted