

Test Laboratory: Sporton International Inc.

Device Under Test Properties

Manufacturer	Dimensions [mm]	IMEI	DUT Type
	70.0 x 50.0 x 8.0		5G Verification Source

Exposure Conditions

Phantom Section	Position, Test Distance [mm]	Frequency [MHz]	Conversion Factor
5G	FRONT, 10.00	10000.0	1.0

Hardware Setup

Phantom	Medium	Probe, Calibration Date	DAE, Calibration Date
mmWave - xxxx	Air -	EUmmWV4 - SN9441_F1-78GHz, 2020-11-24	DAE4 Sn699, 2021-02-16

Scans Setup

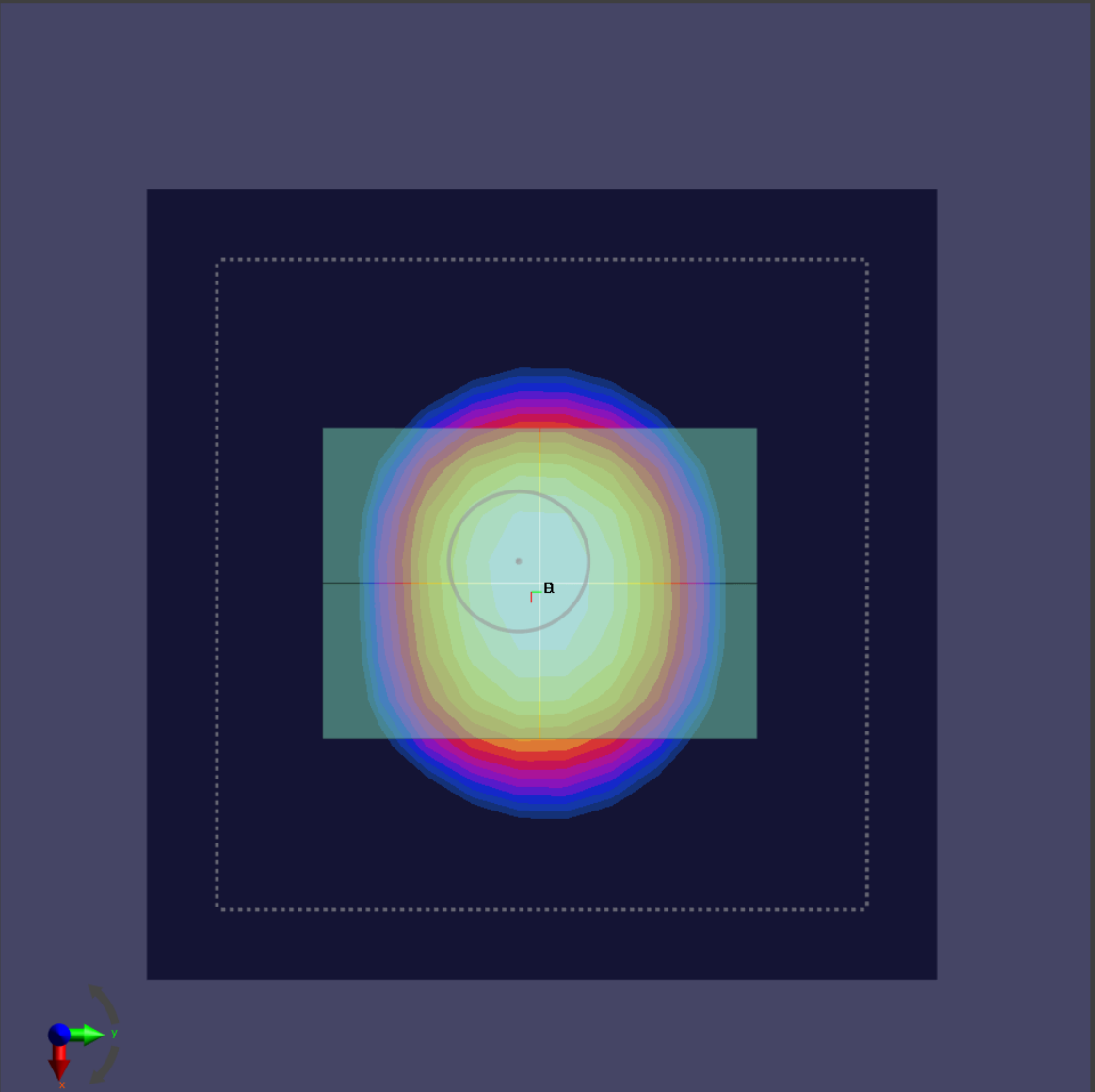
Grid Extents [mm]	120.0 x 120.0
Grid Steps [lambda]	0.25 x 0.25
Sensor Surface [mm]	10.0

Measurement Results

Date	2021-04-25, 02:46
Avg. Area [cm <sup>2</sup> ]	4.00
S <sub>avg inc</sub> [W/m <sup>2</sup> ]	39.2
S <sub>avg tot</sub> [W/m <sup>2</sup> ]	39.6
S <sub>peak</sub> [W/m <sup>2</sup> ]	48.6
E <sub>peak</sub> [V/m]	137
H <sub>peak</sub> [A/m]	0.374
Power Drift [dB]	0.06

Averaged [4.0 cm<sup>2</sup>] |Re{S}|(x,y,z,f0) [dB(39.6W/m<sup>2</sup>)]

0



-10