

## APPENDIX

### 11. Photographs of Test Setup



**Fig.1 Photograph of the SAR measurement system**

### Photograph of the Tissue Simulant Fluid Liquid Depth

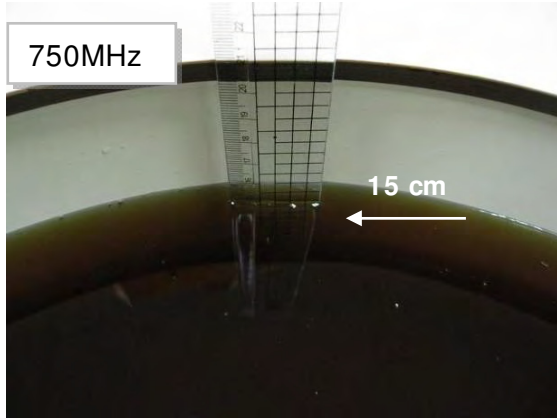


Fig.2.1

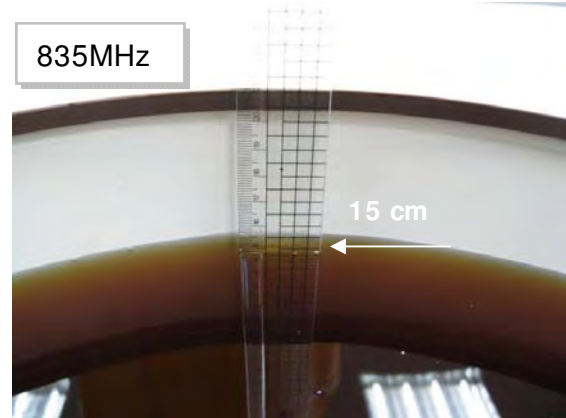


Fig.2.2

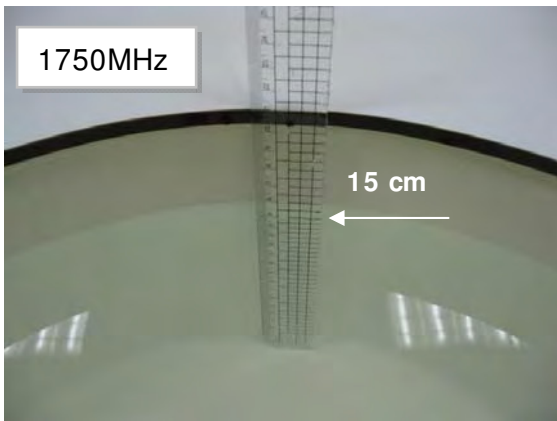


Fig.2.3

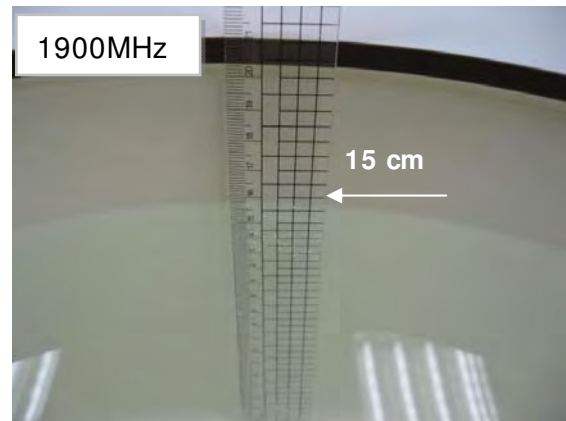


Fig.2.4

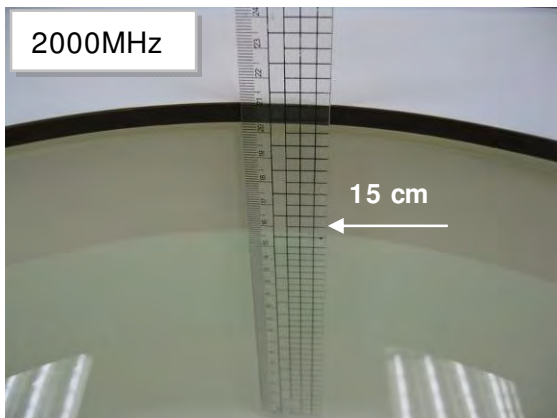


Fig.2.5

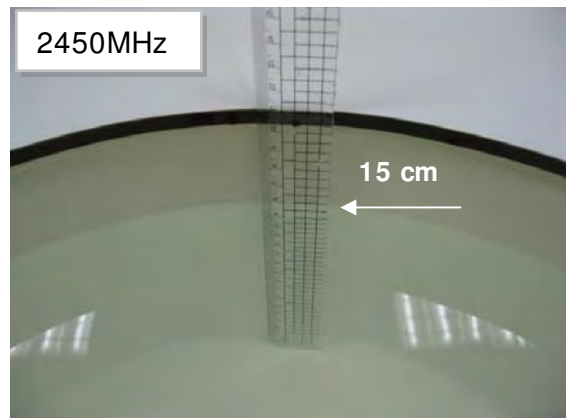
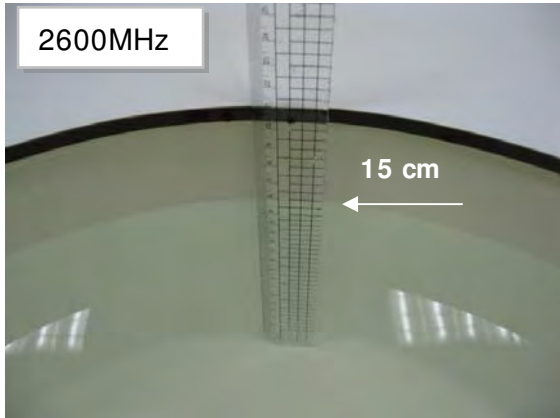
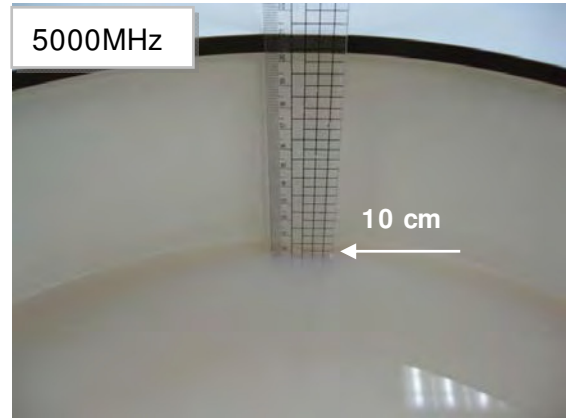


Fig.2.6

**Photograph of the Tissue Simulant Fluid Liquid Depth**

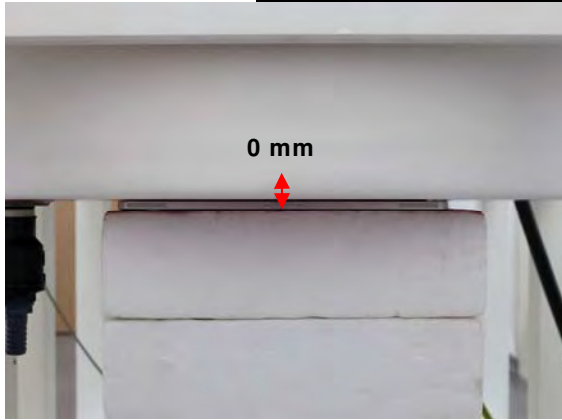


**Fig.2.7**

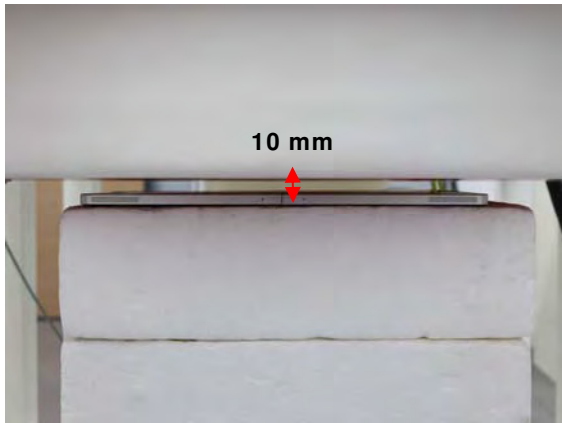


**Fig.2.8**

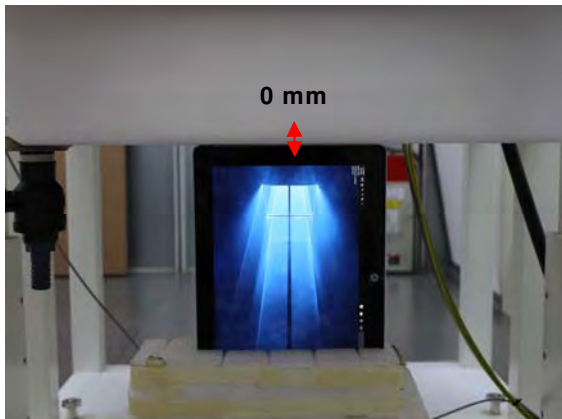
**Body - distance between flat phantom and EUT is 0 mm**



**Fig.3 EUT Back side to flat phantom**

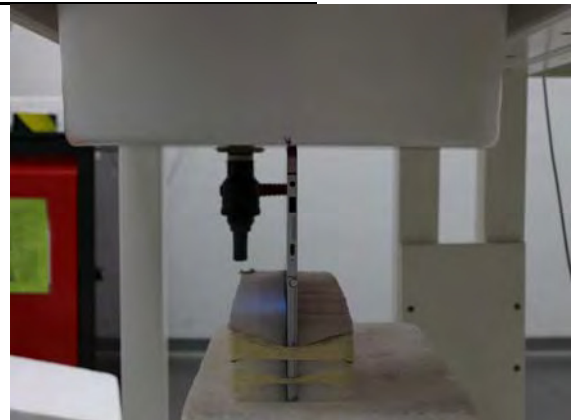
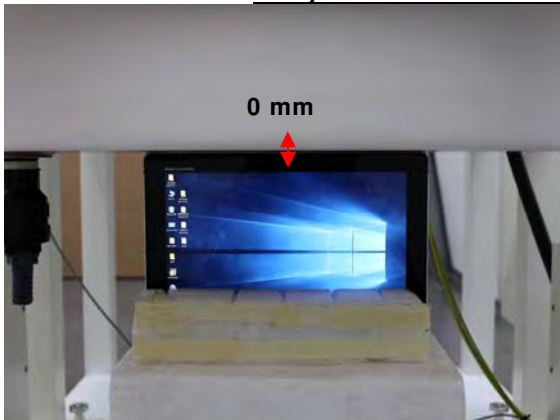


**Fig.4 EUT Back side (10mm) to flat phantom**

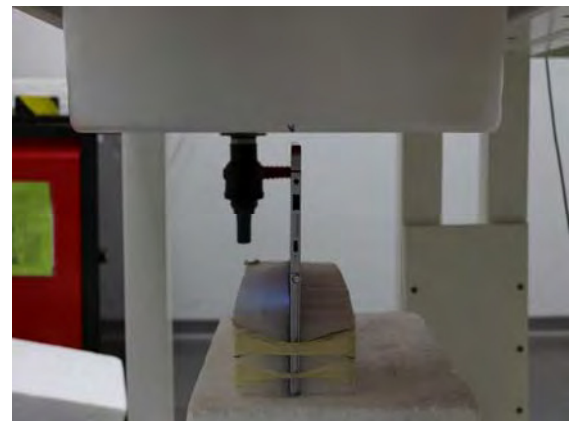


**Fig.5 EUT Right side to flat phantom**

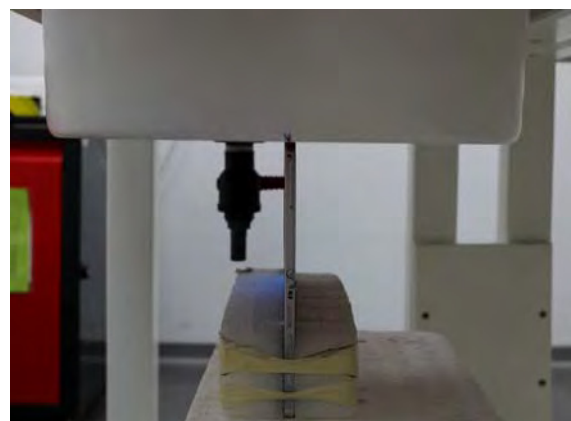
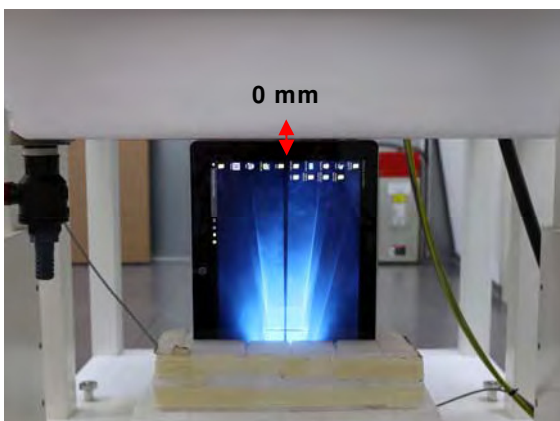
**Body - distance between flat phantom and EUT is 0 mm**



**Fig.6 EUT Top side to flat phantom**



**Fig.7 EUT Top side (10mm) to flat phantom**



**Fig.8 EUT Left side to flat phantom**

## 12. Photographs of the EUT



**Fig.9 Front view of EUT**



**Fig.10 Back view of EUT**

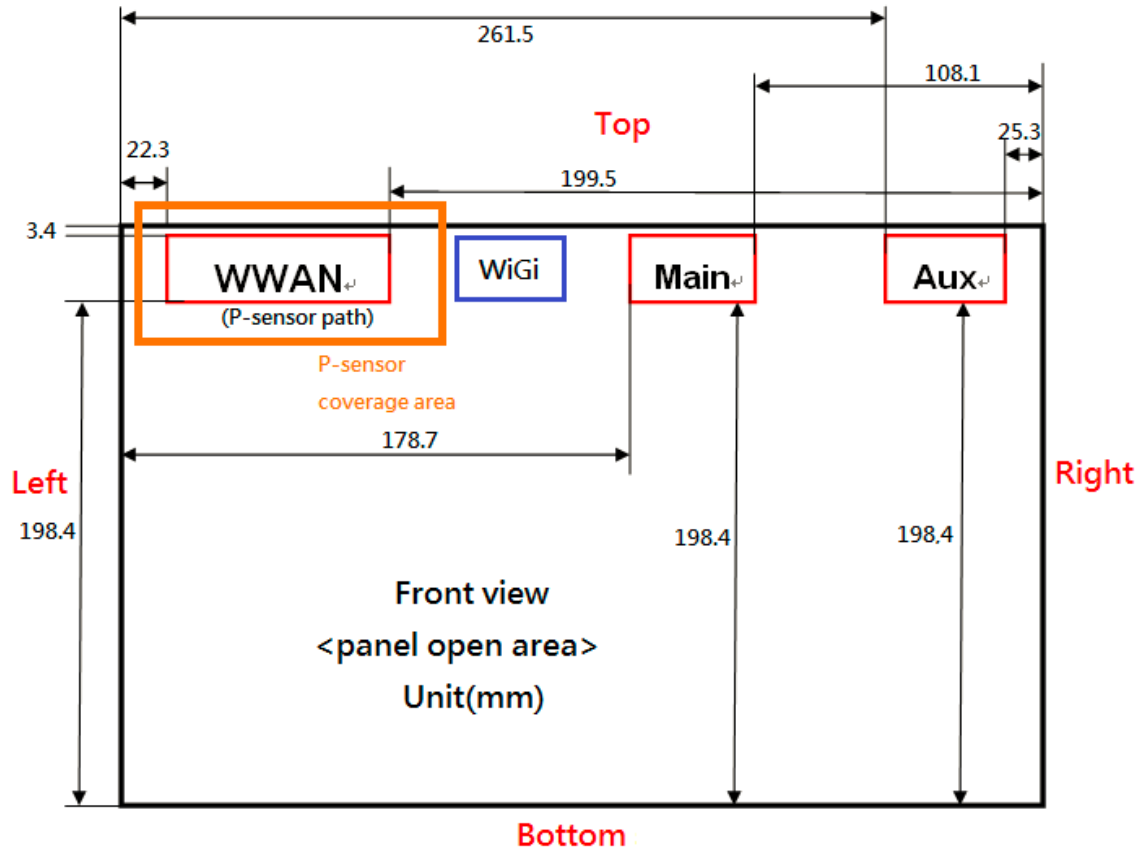


Fig.11 Antenna position of EUT (Front view)

- End of Report -