

Annex C. Test System Plots

1. WCDMA II, RMC 12.2kbps, 5MHz, CH9400, Ant 5, Bottom Edge.....	159
2. WCDMA IV, RMC 12.2kbps, 5MHz, CH1762, Ant 5, Bottom Edge	160
3. WCDMA V, RMC 12.2kbps, 5MHz, CH4183, Ant 5, Bottom Edge	161
4. LTE Band 5, QPSK - 10MHz, CH20525, Ant 5, Bottom Edge	162
5. LTE Band 7, QPSK - 20MHz, CH20850, Ant 8, Left Edge	163
6. LTE Band 12, QPSK - 10MHz, CH23095, Ant 5, Bottom Edge	164
7. LTE Band 13, QPSK - 10MHz, CH23230, Ant 5, Bottom Edge	165
8. LTE Band 14, QPSK - 10MHz, CH23330, Ant 5, Bottom Edge	166
9. LTE Band 17, QPSK - 10MHz, CH23790 Ant 5, Bottom Edge	167
10. LTE Band 25, QPSK - 20MHz, CH26590 Ant 8, Left Edge.....	168
11. LTE Band 26, QPSK - 15MHz, CH26865, Ant 5, Bottom Edge.....	169
12. LTE Band 30 - 10MHz, CH27710, Ant 5, Bottom Edge	170
13. LTE Band 38, QPSK - 20MHz, CH38000, Ant 5, Laptop	171
14. LTE Band 41, QPSK - 20MHz, CH40620, Ant 8, Left edge	172
15. LTE Band 48, QPSK - 20MHz, CH55990, Ant 8, Left Edge.....	173
16. LTE Band 66, QPSK - 20MHz, CH132572, Ant 5, Laptop	174
17. LTE Band 71, QPSK - 20MHz, CH133297, Ant 5, Bottom Edge.....	175
18. 5G NR FR1 Band 2, QPSK – 20MHz, CH372000, Ant 8 – Left Edge.....	176
19. 5G NR FR1 Band 5, QPSK – 20MHz, CH167300, Ant 5 – Bottom Edge.....	177
20. 5G NR FR1 Band 7, QPSK – 20MHz, CH507000, Ant 5 – Bottom Edge.....	178
21. 5G NR FR1 Band 25, QPSK – 20MHz, CH376500, Ant 5 – Bottom Edge.....	179
22. 5G NR FR1 Band 30, QPSK – 10MHz, CH462000, Ant 5 – Bottom Edge.....	180
23. 5G NR FR1 Band 38, QPSK – 40MHz, CH519000, Ant 5 – Bottom Edge.....	181
24. 5G NR FR1 Band 41, QPSK – 100MHz, CH518601, Ant 5 – Laptop	182
25. 5G NR FR1 Band 66, QPSK – 40MHz, CH349000, Ant 5 – Laptop	183
26. 5G NR FR1 Band 71, QPSK – 20MHz, CH136100, Ant 5 – Bottom Edge.....	184
27. 5G NR FR1 Band 77, QPSK – 100MHz, CH650000, Ant 5 – Bottom Edge.....	185
28. 5G NR FR1 Band 78, QPSK – 100MHz, CH650000, Ant 8 – Left Edge.....	186
29. System Check Body Liquid 750MHz – 2022-04-21 – System2.....	187
30. System Check Body Liquid 750MHz – 2022-06-14 – System 2.....	188
31. System Check Body Liquid 750MHz – 2022-06-13 – System 4.....	189
32. System Check Body Liquid 835MHz – 2022-04-21 – System 2.....	190
33. System Check Body Liquid 835MHz – 2022-05-31 – System 2.....	191
34. System Check Body Liquid 835MHz – 2022-05-17 – System 4.....	192
35. System Check Body Liquid 1750MHz – 2022-05-26 – System 2.....	193
36. System Check Body Liquid 1750MHz – 2022-12-05 – System 4.....	194
37. System Check Body Liquid 1900MHz – 2022-04-22 – System 2.....	195
38. System Check Body Liquid 1900MHz – 2022-04-28 – System 2.....	196
39. System Check Body Liquid 1900MHz – 2022-17-05 – System 4.....	197

40.	System Check Body Liquid 1900MHz – 2022-19-05 – System 4.....	198
41.	System Check Body Liquid 2300MHz – System 2	199
42.	System Check Body Liquid 2300MHz – 2022-17-05 – System 4.....	200
43.	System Check Body Liquid 2600MHz – 2022-04-21 – System 2.....	201
44.	System Check Body Liquid 2600MHz – 2022-06-01 – System 2.....	202
45.	System Check Body Liquid 2600MHz – 2022-17-05 – System 4.....	203
46.	System Check Body Liquid 2600MHz – 2022-19-05 – System 4.....	204
47.	System Check Body Liquid 3700MHz – 2022-06-14 - System2.....	205
48.	System Check Body Liquid 3700MHz – 2022-17-05 – System 4.....	206
49.	System Check Body Liquid 3700MHz – 2022-19-05 – System 4.....	207

1. WCDMA II, RMC 12.2kbps, 5MHz, CH9400, Ant 5, Bottom Edge

Device under Test Properties

Name, Manufacturer	Dimensions [mm]	S/N	DUT Type
HSN-I55C	235.0 x 295.0 x 20.0	00027705HB	Convertible PC

Exposure Conditions

Phantom Section, TSL	Position, Test Distance [mm]	Band	Group, UID	Frequency [MHz], Channel Number	Conversion Factor	TSL Conductivity [S/m]	TSL Permittivity
Flat, MSL	EDGE, BOTTOM, 0.00	Band2, UTRA/FDD	WCDMA, 10011-CAB	1880.0, 9400	7.98	1.48	52.2

Hardware Setup

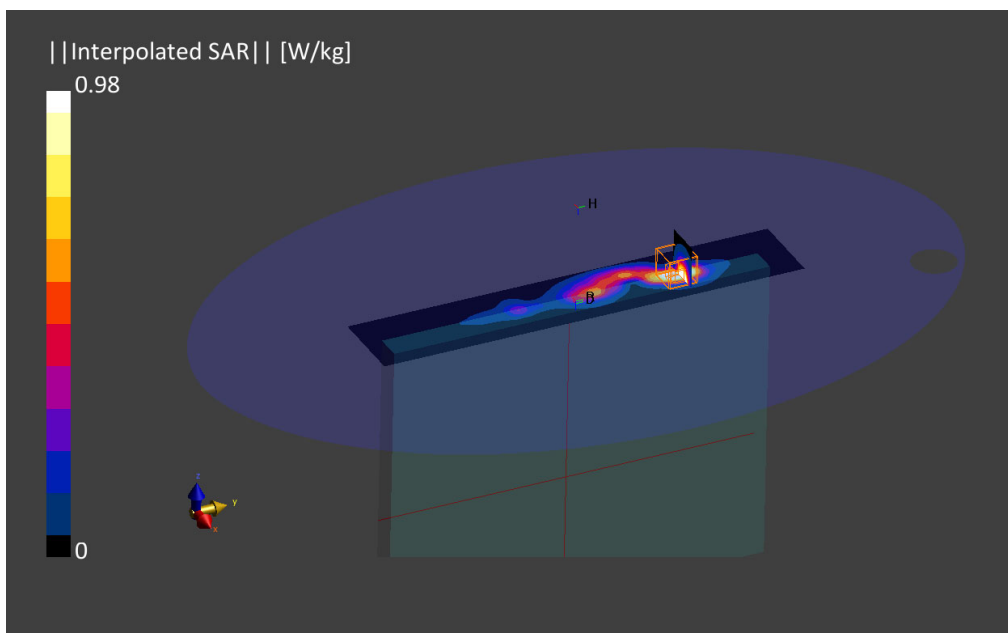
Phantom	TSL, Measured Date	Probe, Calibration Date	DAE, Calibration Date
ELI V8.0 (20deg probe tilt)	MABL-600-6000, 2022-Apr-25	EX3DV4 - SN7604, 2021-08-16	DAE4 Sn1703, 2022-04-28

Scan Setup

	Area Scan	Zoom Scan
Grid Extents [mm]	60.0 x 330.0	30.0 x 30.0 x 30.0
Grid Steps [mm]	15.0 x 15.0	6.0 x 6.0 x 1.5
Sensor Surface [mm]	3.0	1.4
Graded Grid	Yes	Yes
Grading Ratio	1.5	1.5
MAIA	Confirmed by MAIA	Confirmed by MAIA
Surface Detection	VMS + 6p	VMS + 6p
Scan Method	Measured	Measured

Measurement Results

	Area Scan	Zoom Scan
Date	2022-04-27, 16:21	2022-04-27, 16:27
psSAR1g [W/kg]	0.933	0.977
psSAR10g [W/kg]	0.441	0.455
Power Drift [dB]	-0.03	-0.01
Power Scaling	Disabled	Disabled
Scaling Factor		
TSL Correction	Positive Only	Positive Only
M2/M1 [%]		78.1
Dist 3dB Peak [mm]		7.2



2. WCDMA IV, RMC 12.2kbps, 5MHz, CH1762, Ant 5, Bottom Edge

Device under Test Properties

Name, Manufacturer	Dimensions [mm]	S/N	DUT Type
HSN-I55C	235.0 x 295.0 x 20.0	00027705HB	Convertible PC

Exposure Conditions

Phantom Section, TSL	Position, Test Distance [mm]	Band	Group, UID	Frequency [MHz], Channel Number	Conversion Factor	TSL Conductivity [S/m]	TSL Permittivity
Flat, MSL	EDGE BOTTOM, 0.00	Band 4, UTRA/FDD	WCDMA, 10011-CAB	1732.5, 1762	8.37	1.37	51.6

Hardware Setup

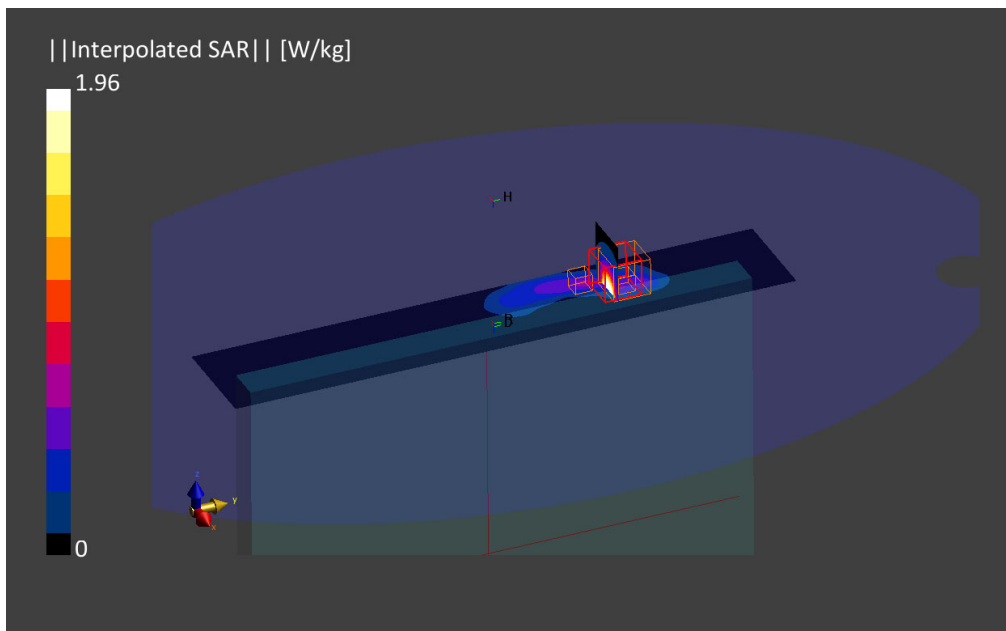
Phantom	TSL, Measured Date	Probe, Calibration Date	DAE, Calibration Date
ELI V8.0 (20deg probe tilt)	MBBL-600-6000 ,2022-Apr-25	EX3DV4 - SN7604, 2021-08-16	DAE4 Sn1703, 2022-04-28

Scan Setup

	Area Scan	Zoom Scan
Grid Extents [mm]	60.0 x 330.0	30.0 x 30.0 x 30.0
Grid Steps [mm]	15.0 x 15.0	5.1 x 5.1 x 1.4
Sensor Surface [mm]	3.0	1.4
Graded Grid	Yes	Yes
Grading Ratio	1.5	1.4
MAIA	Confirmed by MAIA	Confirmed by MAIA
Surface Detection	VMS + 6p	VMS + 6p
Scan Method	Measured	Measured

Measurement Results

	Area Scan	Zoom Scan
Date	2022-04-26, 15:53	2022-04-26, 16:01
psSAR1g [W/kg]	0.546	0.790
psSAR10g [W/kg]	0.292	0.383
Power Drift [dB]	0.04	0.03
Power Scaling	Disabled	Disabled
Scaling Factor [dB]		
TSL Correction	Positive Only	Positive Only
M2/M1 [%]		81.5
Dist 3dB Peak [mm]		7.3



3. WCDMA V, RMC 12.2kbps, 5MHz, CH4183, Ant 5, Bottom Edge

Device under Test Properties

Name, Manufacturer	Dimensions [mm]	S/N	DUT Type
HSN-I55C	235.0 x 295.0 x 20.0	00027705HB	Convertible PC

Exposure Conditions

Phantom Section, TSL	Position, Test Distance [mm]	Band	Group, UID	Frequency [MHz], Channel Number	Conversion Factor	TSL Conductivity [S/m]	TSL Permittivity
Flat, MSL	EDGE BOTTOM, 0.00	Band 5, UTRA/FDD	WCDMA, 10011-CAB	836.6, 4183	9.34	0.97	55.4

Hardware Setup

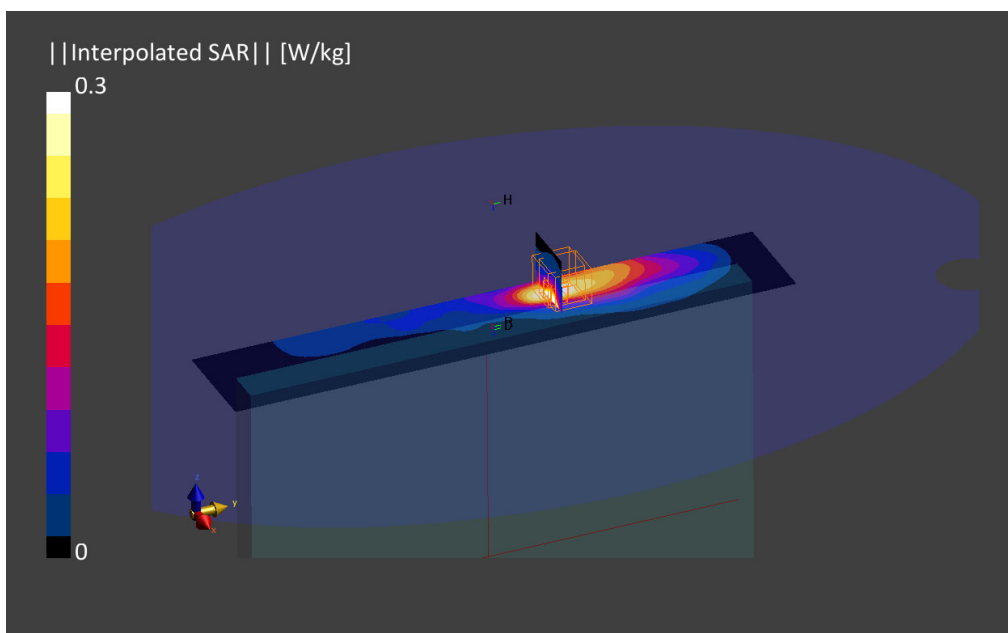
Phantom	TSL, Measured Date	Probe, Calibration Date	DAE, Calibration Date
ELI V8.0 (20deg probe tilt)	MBBL-600-6000 ,2022-May-30	EX3DV4 - SN7604, 2021-08-16	DAE4 Sn1703, 2022-04-28

Scan Setup

	Area Scan	Zoom Scan
Grid Extents [mm]	60.0 x 330.0	30.0 x 30.0 x 30.0
Grid Steps [mm]	15.0 x 15.0	5.9 x 5.9 x 1.5
Sensor Surface [mm]	3.0	1.4
Graded Grid	Yes	Yes
Grading Ratio	1.5	1.5
MAIA	Confirmed by MAIA	Confirmed by MAIA
Surface Detection	VMS + 6p	VMS + 6p
Scan Method	Measured	Measured

Measurement Results

	Area Scan	Zoom Scan
Date	2022-05-31, 11:00	2022-05-31, 11:08
psSAR1g [W/kg]	0.246	0.277
psSAR10g [W/kg]	0.153	0.133
Power Drift [dB]	-0.02	0.01
Power Scaling	Disabled	Disabled
Scaling Factor		
TSL Correction	Positive Only	Positive Only
M2/M1 [%]		69.3
Dist 3dB Peak [mm]		6.0



4. LTE Band 5, QPSK - 10MHz, CH20525, Ant 5, Bottom Edge

Device under Test Properties

Model, Manufacturer	Dimensions [mm]	IMEI	DUT Type
Device,	235.0 x 295.0 x 20.0		Laptop

Exposure Conditions

Phantom Section, TSL	Position, Test Distance [mm]	Band	Group, UID	Frequency [MHz], Channel Number	Conversion Factor	TSL Conductivity [S/m]	TSL Permittivity
Flat, MSL	EDGE BOTTOM, 0.00	Band 5, E-UTRA/FDD	LTE-FDD, 10175-CAG	836.5, 20525	9.34	0.97	55.4

Hardware Setup

Phantom	TSL, Measured Date	Probe, Calibration Date	DAE, Calibration Date
ELI V8.0 (20deg probe tilt)	MABL-600-6000, 2022-May-30	EX3DV4 - SN7604, 2021-08-16	DAE4 Sn1703, 2022-04-28

Scan Setup

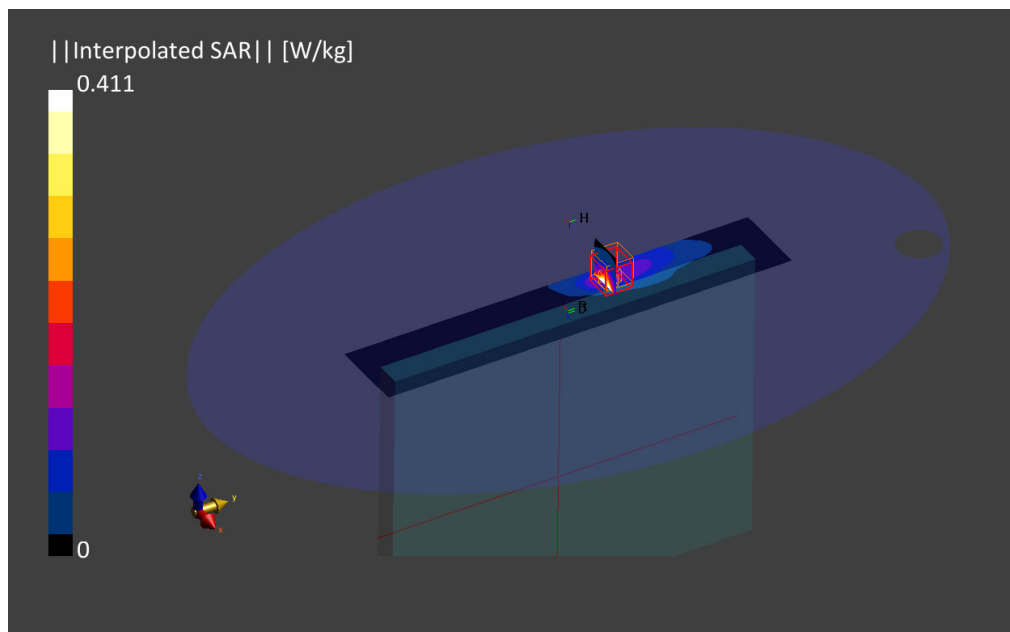
	Area Scan	Zoom Scan
Grid Extents [mm]	60.0 x 330.0	30.0 x 30.0 x 30.0
Grid Steps [mm]	15.0 x 15.0	6.0 x 6.0 x 1.5
Sensor Surface [mm]	3.0	1.4
Graded Grid	Yes	Yes
Grading Ratio	1.5	1.5
MAIA	N/A	N/A
Surface Detection	VMS + 6p	VMS + 6p
Scan Method	Measured	Measured

Measurement Results

	Area Scan	Zoom Scan
Date	2022-05-31, 12:34	2022-05-31, 12:40
psSAR1g [W/Kg]	0.349	0.379
psSAR10g [W/Kg]	0.216	0.185
Power Drift [dB]	0.01	-0.01
Power Scaling	Disabled	Disabled
Scaling Factor [dB]		
TSL Correction	No correction	No correction
M2/M1 [%]		64.7
Dist 3dB Peak [mm]		7.2

Warning(s) / Error(s)

Details	Area Scan	Zoom Scan
Warning(s)		Peak 10g averaged SAR on boundary.
Error(s)		



5. LTE Band 7, QPSK - 20MHz, CH20850, Ant 8, Left Edge

Device under Test Properties

Name, Manufacturer	Dimensions [mm]	S/N	DUT Type
HSN-I55C	235.0 x 295.0 x 20.0	00027705HB	Convertible PC

Exposure Conditions

Phantom Section, TSL	Position, Test Distance [mm]	Band	Group, UID	Frequency [MHz], Channel Number	Conversion Factor	TSL Conductivity [S/m]	TSL Permittivity
Flat, MSL	EDGE LEFT, 0.00	Band 7, E-UTRA/FDD	LTE-FDD, 10169-CAE	2510.0, 20850	7.57	2.05	53.1

Hardware Setup

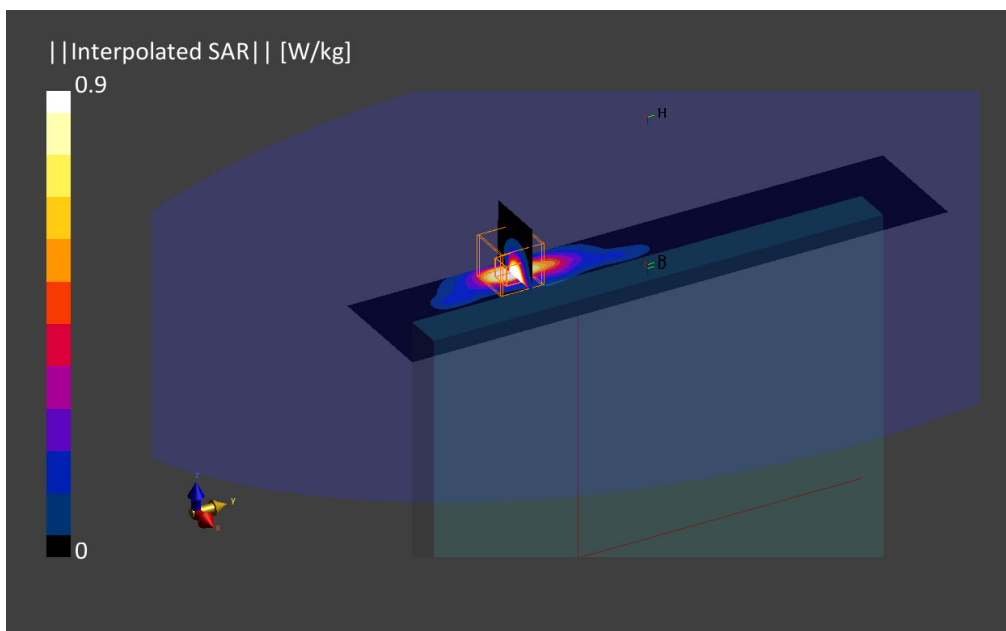
Phantom	TSL, Measured Date	Probe, Calibration Date	DAE, Calibration Date
ELI V8.0 (20deg probe tilt)	MABL-600-6000,2022-May-30	EX3DV4 - SN7604, 2021-08-16	DAE4 Sn1703, 2022-04-28

Scan Setup

	Area Scan	Zoom Scan
Grid Extents [mm]	60.0 x 280.0	30.0 x 30.0 x 30.0
Grid Steps [mm]	10.0 x 10.0	4.5 x 4.5 x 1.5
Sensor Surface [mm]	3.0	1.4
Graded Grid	Yes	Yes
Grading Ratio	1.5	1.5
MAIA	Confirmed by MAIA	Confirmed by MAIA
Surface Detection	VMS + 6p	VMS + 6p
Scan Method	Measured	Measured

Measurement Results

	Area Scan	Zoom Scan
Date	2022-06-01, 14:38	2022-06-01, 14:48
psSAR1g [W/kg]	0.964	0.975
psSAR10g [W/kg]	0.345	0.346
Power Drift [dB]	0.02	-0.00
Power Scaling	Disabled	Disabled
Scaling Factor [dB]		
TSL Correction	Positive Only	Positive Only
M2/M1 [%]		70.9
Dist 3dB Peak [mm]		7.0



6. LTE Band 12, QPSK - 10MHz, CH23095, Ant 5, Bottom Edge

Device under Test Properties

Name, Manufacturer	Dimensions [mm]	S/N	DUT Type
HSN-I55C	235.0 x 295.0 x 20.0	00027705HB	Convertible PC

Exposure Conditions

Phantom Section, TSL	Position, Test Distance [mm]	Band	Group, UID	Frequency [MHz], Channel Number	Conversion Factor	TSL Conductivity [S/m]	TSL Permittivity
Flat, MSL	EDGE BOTTOM, 0.00	Band 12, E-UTRA/FDD	LTE-FDD, 10175-CAG	707.5, 23095	9.63	0.90	53.6

Hardware Setup

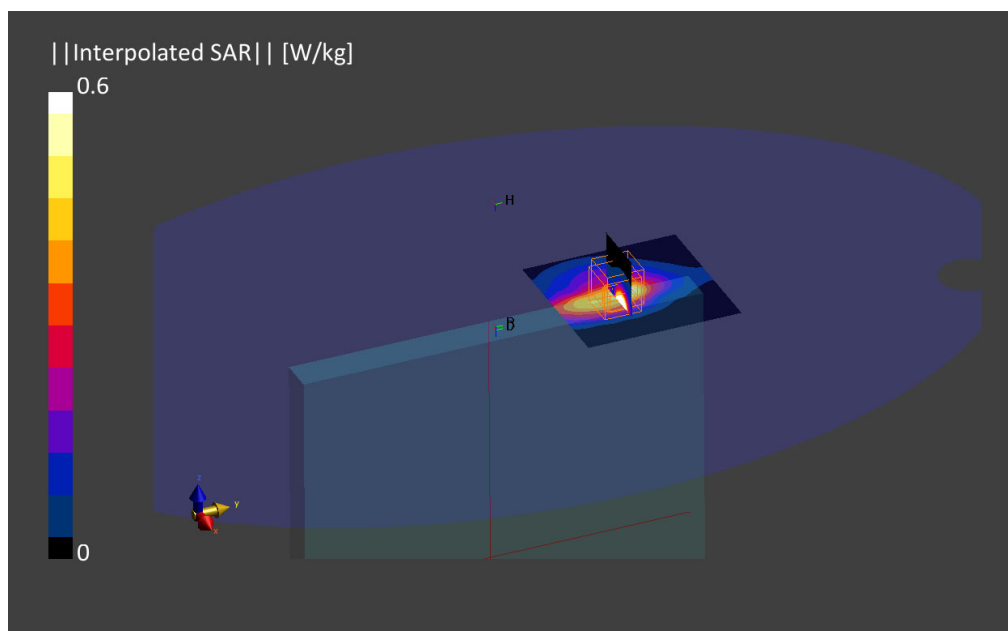
Phantom	TSL, Measured Date	Probe, Calibration Date	DAE, Calibration Date
ELI V8.0 (20deg probe tilt)	MABL-600-6000, 2022-Apr-20	EX3DV4 - SN7604, 2021-08-16	DAE4 Sn1703, 2022-04-28

Scan Setup

	Area Scan	Zoom Scan
Grid Extents [mm]	90.0 x 90.0	30.0 x 30.0 x 30.0
Grid Steps [mm]	15.0 x 15.0	4.9 x 4.9 x 1.4
Sensor Surface [mm]	3.0	1.4
Graded Grid	Yes	Yes
Grading Ratio	1.5	1.4
MAIA	Confirmed by MAIA	Confirmed by MAIA
Surface Detection	VMS + 6p	VMS + 6p
Scan Method	Measured	Measured

Measurement Results

	Area Scan	Zoom Scan
Date	2022-04-21, 16:18	2022-04-21, 16:28
psSAR1g [W/kg]	0.450	0.603
psSAR10g [W/kg]	0.282	0.257
Power Drift [dB]	-0.02	0.03
Power Scaling	Disabled	Disabled
Scaling Factor [dB]		
TSL Correction	Positive Only	Positive Only
M2/M1 [%]		80.0
Dist 3dB Peak [mm]		10.8



7. **LTE Band 13, QPSK - 10MHz, CH23230, Ant 5, Bottom Edge**

Device under Test Properties

Name, Manufacturer	Dimensions [mm]	S/N	DUT Type
HSN-I55C	235.0 x 295.0 x 20.0	00027705HB	Convertible PC

Exposure Conditions

Phantom Section, TSL	Position, Test Distance [mm]	Band	Group, UID	Frequency [MHz], Channel Number	Conversion Factor	TSL Conductivity [S/m]	TSL Permittivity
Flat, MSL	EDGE BOTTOM, 0.00	Band 13, E-UTRA/FDD	LTE-FDD, 10175-CAG	782.0, 23230	9.63	0.92	53.4

Hardware Setup

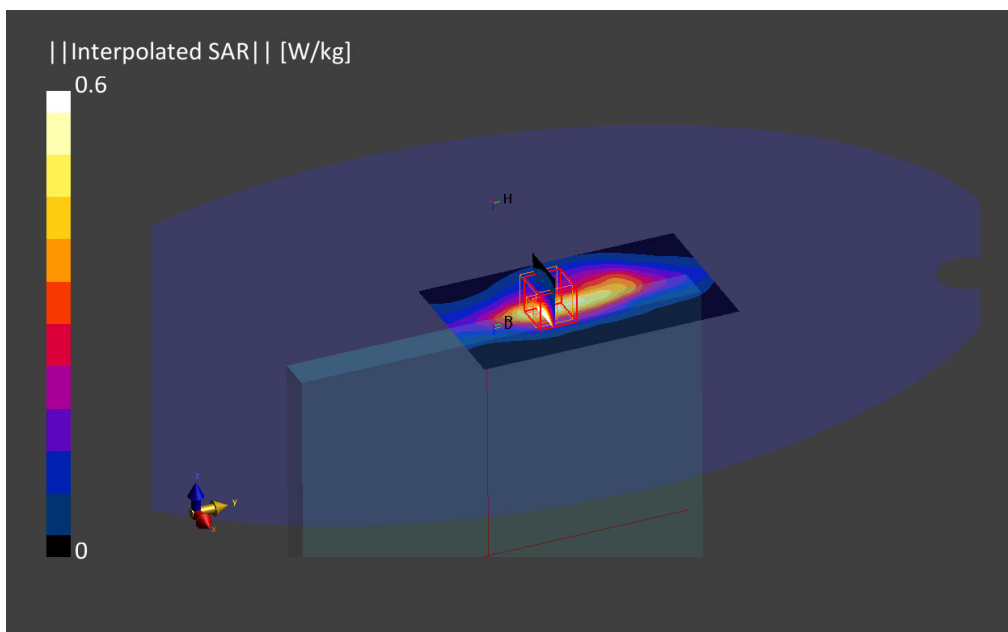
Phantom	TSL, Measured Date	Probe, Calibration Date	DAE, Calibration Date
ELI V8.0 (20deg probe tilt)	MBBL-600-6000 , 2022-Apr-20	EX3DV4 - SN7604, 2021-08-16	DAE4 Sn1703, 2022-04-28

Scan Setup

	Area Scan	Zoom Scan
Grid Extents [mm]	90.0 x 150.0	30.0 x 30.0 x 30.0
Grid Steps [mm]	15.0 x 15.0	6.0 x 6.0 x 1.5
Sensor Surface [mm]	3.0	1.4
Graded Grid	Yes	Yes
Grading Ratio	1.5	1.5
MAIA	Confirmed by MAIA	Confirmed by MAIA
Surface Detection	VMS + 6p	VMS + 6p
Scan Method	Measured	Measured

Measurement Results

	Area Scan	Zoom Scan
Date	2022-04-21, 18:03	2022-04-21, 18:09
psSAR1g [W/kg]	0.458	0.531
psSAR10g [W/kg]	0.289	0.269
Power Drift [dB]	-0.09	-0.01
Power Scaling	Disabled	Disabled
Scaling Factor		
TSL Correction	Positive Only	Positive Only
M2/M1 [%]		82.9
Dist 3dB Peak [mm]		14.4



8. LTE Band 14, QPSK - 10MHz, CH23330, Ant 5, Bottom Edge

Device under Test Properties

Name, Manufacturer	Dimensions [mm]	S/N	DUT Type
HSN-I55C	235.0 x 295.0 x 20.0	00027705HB	Convertible PC

Exposure Conditions

Phantom Section, TSL	Position, Test Distance [mm]	Band	Group, UID	Frequency [MHz], Channel Number	Conversion Factor	TSL Conductivity [S/m]	TSL Permittivity
Flat, MSL	EDGE, BOTTOM, 0.00	Band 14, E-UTRA/FDD	LTE-FDD, 10175-CAG	793.0, 23330	9.63	0.92	53.4

Hardware Setup

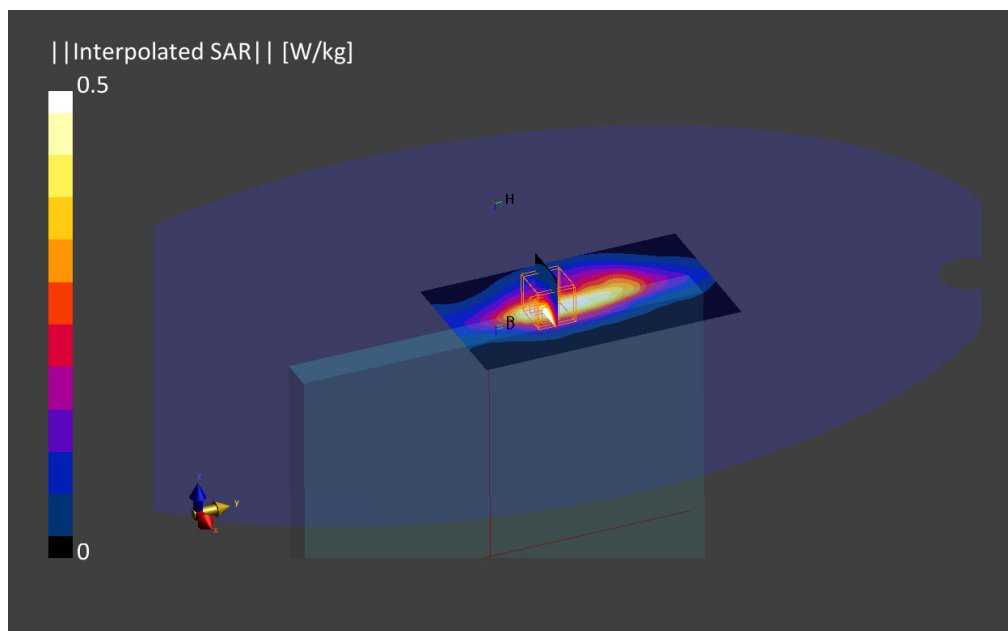
Phantom	TSL, Measured Date	Probe, Calibration Date	DAE, Calibration Date
ELI V8.0 (20deg probe tilt)	MABL-600-6000 , 2022-Apr-20	EX3DV4 - SN7604, 2021-08-16	DAE4 Sn1703, 2022-04-28

Scan Setup

	Area Scan	Zoom Scan
Grid Extents [mm]	90.0 x 150.0	30.0 x 30.0 x 30.0
Grid Steps [mm]	15.0 x 15.0	6.0 x 6.0 x 1.5
Sensor Surface [mm]	3.0	1.4
Graded Grid	Yes	Yes
Grading Ratio	1.5	1.5
MAIA	Confirmed by MAIA	Confirmed by MAIA
Surface Detection	VMS + 6p	VMS + 6p
Scan Method	Measured	Measured

Measurement Results

	Area Scan	Zoom Scan
Date	2022-04-21, 18:22	2022-04-21, 18:28
psSAR1g [W/kg]	0.470	0.524
psSAR10g [W/kg]	0.296	0.271
Power Drift [dB]	0.05	-0.04
Power Scaling	Disabled	Disabled
Scaling Factor [dB]		
TSL Correction	Positive Only	Positive Only
M2/M1 [%]		76.1
Dist 3dB Peak [mm]		7.6



9. LTE Band 17, QPSK - 10MHz, CH23790 Ant 5, Bottom Edge

Exposure Conditions

Phantom Section, TSL	Position, Test Distance [mm]	Band	Group, UID	Frequency [MHz], Channel Number	Conversion Factor	TSL Conductivity [S/m]	TSL Permittivity
Flat, MSL	EDGE BOTTOM, 0.00	Band 17, E-UTRA/FDD	LTE-FDD, 10175-CAG	710.0, 23790	9.69	0.90	52.7

Hardware Setup

Phantom	TSL, Measured Date	Probe, Calibration Date	DAE, Calibration Date
ELI V8.0 (20deg probe tilt)	MBBL-600-6000 , 2022-Jun-14	EX3DV4 - SN7604, 2021-08-16	DAE4 Sn1703, 2022-04-28

Scan Setup

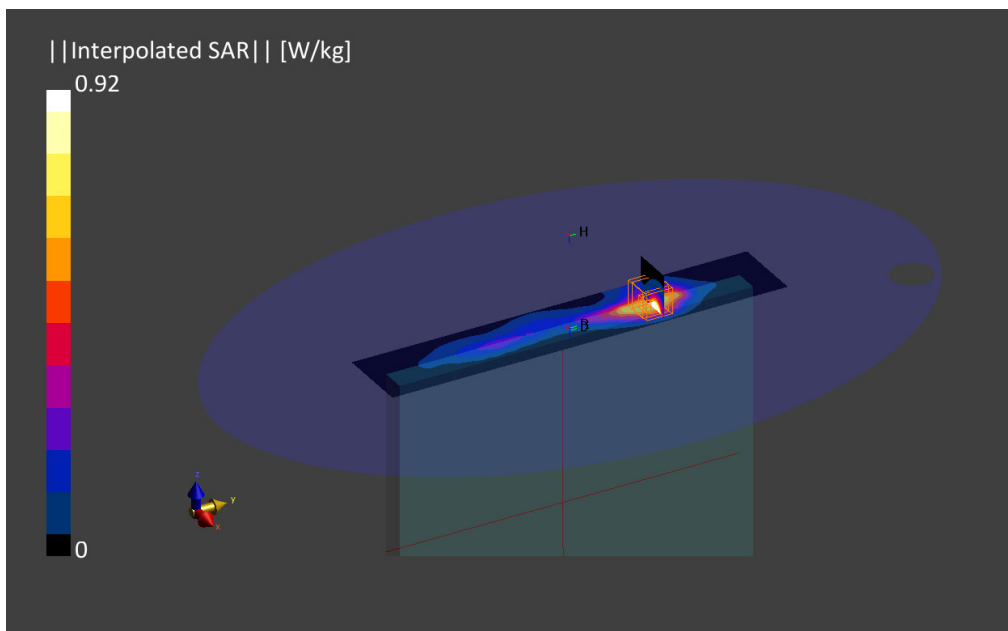
	Area Scan	Zoom Scan
Grid Extents [mm]	60.0 x 330.0	30.0 x 30.0 x 30.0
Grid Steps [mm]	15.0 x 15.0	4.9 x 4.9 x 1.4
Sensor Surface [mm]	3.0	1.4
Graded Grid	Yes	Yes
Grading Ratio	1.5	1.4
MAIA	N/A	N/A
Surface Detection	VMS + 6p	VMS + 6p
Scan Method	Measured	Measured

Measurement Results

	Area Scan	Zoom Scan
Date	2022-06-14, 15:30	2022-06-14, 15:40
psSAR1g [W/Kg]	0.626	0.927
psSAR10g [W/Kg]	0.412	0.412
Power Drift [dB]	0.02	-0.02
Power Scaling	Disabled	Disabled
Scaling Factor [dB]		
TSL Correction	No correction	No correction
M2/M1 [%]		68.0
Dist 3dB Peak [mm]		5.9

Warning(s) / Error(s)

Details	Area Scan	Zoom Scan
Warning(s)		
Error(s)		



10. LTE Band 25, QPSK - 20MHz, CH26590 Ant 8, Left Edge

Device under Test Properties

Name, Manufacturer	Dimensions [mm]	S/N	DUT Type
HSN-I55C	235.0 x 295.0 x 20.0	00027705HB	Convertible PC

Exposure Conditions

Phantom Section, TSL	Position, Test Distance [mm]	Band	Group, UID	Frequency [MHz], Channel Number	Conversion Factor	TSL Conductivity [S/m]	TSL Permittivity
Flat, MSL	EDGE LEFT, 0.00	Band 25, E-UTRA/FDD	LTE-FDD, 10169-CAE	1905.0, 26590	8.62	1.46	52.3

Hardware Setup

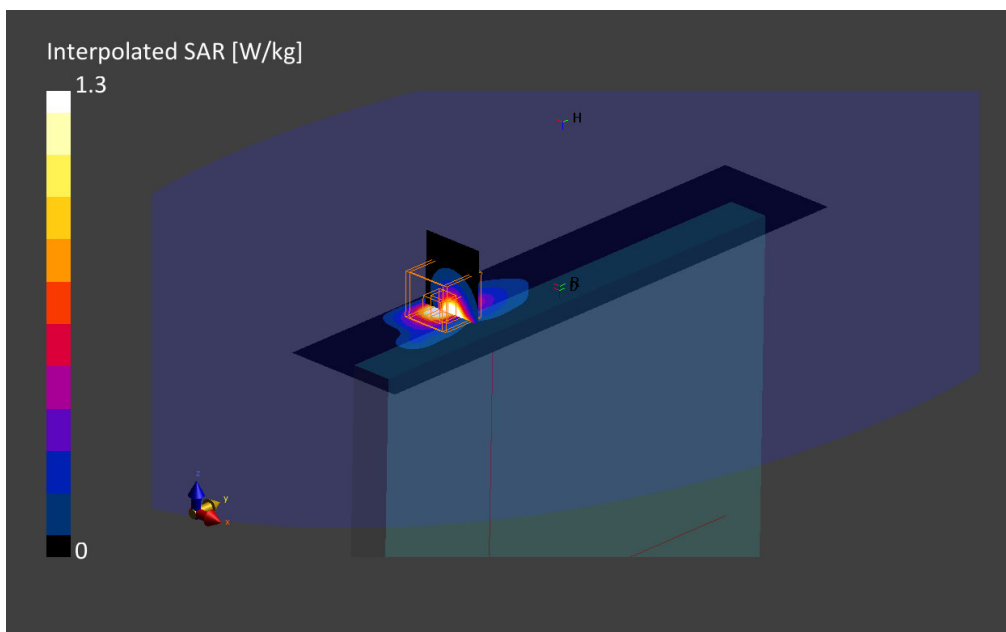
Phantom	TSL, Measured Date	Probe, Calibration Date	DAE, Calibration Date
ELI V8.0 (20deg probe tilt)	MBBL-600-6000 2022-Apr-20	EX3DV4 - SN7604, 2021-08-16	DAE4 Sn1703, 2022-04-28

Scan Setup

	Area Scan	Zoom Scan
Grid Extents [mm]	60.0 x 270.0	30.0 x 30.0 x 30.0
Grid Steps [mm]	15.0 x 15.0	4.4 x 4.4 x 1.4
Sensor Surface [mm]	3.0	1.4
Graded Grid	Yes	Yes
Grading Ratio	1.5	1.4
MAIA	Confirmed by MAIA	Confirmed by MAIA
Surface Detection	VMS + 6p	VMS + 6p
Scan Method	Measured	Measured

Measurement Results

	Area Scan	Zoom Scan
Date	2022-04-22, 09:13	2022-04-22, 09:57
psSAR1g [W/kg]	1.03	1.11
psSAR10g [W/kg]	0.457	0.434
Power Drift [dB]	0.03	-0.02
Power Scaling	Disabled	Disabled
Scaling Factor		
TSL Correction [dB]	Positive Only	Positive Only
M2/M1 [%]		69.1
Dist 3dB Peak [mm]		4.5



11. LTE Band 26, QPSK - 15MHz, CH26865, Ant 5, Bottom Edge

Device under Test Properties

Name, Manufacturer	Dimensions [mm]	S/N	DUT Type
HSN-I55C	235.0 x 295.0 x 20.0	00027705HB	Convertible PC

Exposure Conditions

Phantom Section, TSL	Position, Test Distance [mm]	Band	Group, UID	Frequency [MHz], Channel Number	Conversion Factor	TSL Conductivity [S/m]	TSL Permittivity
Flat, MSL	EDGE, BOTTOM, 0.00	Band 26 E-UTRA/FDD	LTE-FDD, 10160-CAE	831.5, 26865	9.32	0.94	53.3

Hardware Setup

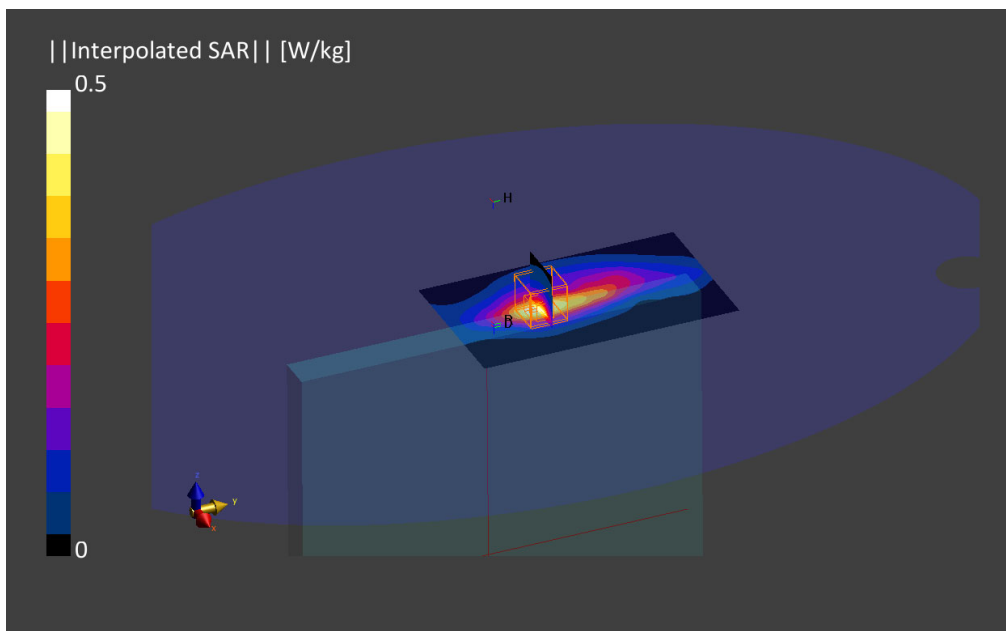
Phantom	TSL, Measured Date	Probe, Calibration Date	DAE, Calibration Date
ELI V8.0 (20deg probe tilt)	MBBL-600-6000 2022-Apr-20	EX3DV4 - SN7604, 2021-08-16	DAE4 Sn1703, 2022-04-28

Scan Setup

	Area Scan	Zoom Scan
Grid Extents [mm]	90.0 x 150.0	30.0 x 30.0 x 30.0
Grid Steps [mm]	15.0 x 15.0	6.0 x 6.0 x 1.5
Sensor Surface [mm]	3.0	1.4
Graded Grid	Yes	Yes
Grading Ratio	1.5	1.5
MAIA	Confirmed by MAIA	Confirmed by MAIA
Surface Detection	VMS + 6p	VMS + 6p
Scan Method	Measured	Measured

Measurement Results

	Area Scan	Zoom Scan
Date	2022-04-21, 18:51	2022-04-21, 18:57
psSAR1g [W/kg]	0.414	0.449
psSAR10g [W/kg]	0.255	0.230
Power Drift [dB]	-0.02	-0.03
Power Scaling	Disabled	Disabled
Scaling Factor		
TSL Correction	Positive Only	Positive Only
M2/M1 [%]		85.7
Dist 3dB Peak [mm]		11.3



12. LTE Band 30 - 10MHz, CH27710, Ant 5, Bottom Edge

Device under Test Properties

Name, Manufacturer	Dimensions [mm]	S/N	DUT Type
HSN-I55C	235.0 x 295.0 x 20.0	00027705HB	Convertible PC

Exposure Conditions

Phantom Section, TSL	Position, Test Distance [mm]	Band	Group, UID	Frequency [MHz], Channel Number	Conversion Factor	TSL Conductivity [S/m]	TSL Permittivity
Flat, MSL	EDGE, BOTTOM, 0.00	Band 30, E-UTRA/FDD	LTE-FDD, 10175-CAG	2310.0, 27710	7.45	1.81	51.7

Hardware Setup

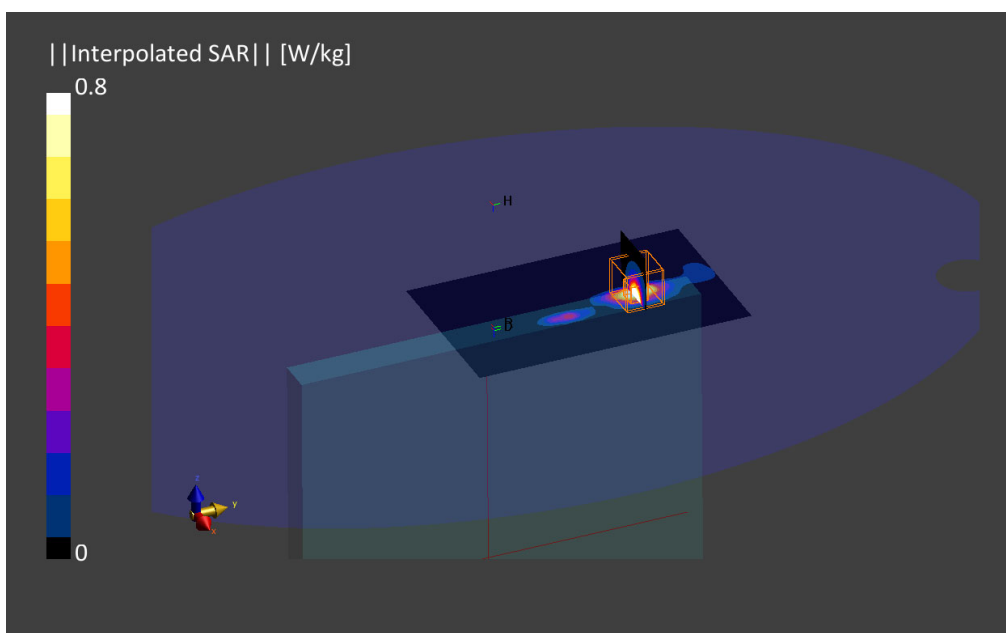
Phantom	TSL, Measured Date	Probe, Calibration Date	DAE, Calibration Date
ELI V8.0 (20deg probe tilt)	MBBL-600-6000, 2022-Apr-20	EX3DV4 - SN7604, 2021-08-16	DAE4 Sn1703, 2022-04-28

Scan Setup

	Area Scan	Zoom Scan
Grid Extents [mm]	100.0 x 160.0	30.0 x 30.0 x 30.0
Grid Steps [mm]	10.0 x 10.0	4.9 x 4.9 x 1.5
Sensor Surface [mm]	3.0	1.4
Graded Grid	Yes	Yes
Grading Ratio	1.5	1.5
MAIA	Confirmed by MAIA	Confirmed by MAIA
Surface Detection	VMS + 6p	VMS + 6p
Scan Method	Measured	Measured

Measurement Results

	Area Scan	Zoom Scan
Date	2022-04-21, 19:03	2022-04-21, 19:12
psSAR1g [W/kg]	0.736	0.818
psSAR10g [W/kg]	0.274	0.300
Power Drift [dB]	-0.02	-0.07
Power Scaling	Disabled	Disabled
Scaling Factor [dB]		
TSL Correction	Positive Only	Positive Only
M2/M1 [%]		74.2
Dist 3dB Peak [mm]		8.0



13. LTE Band 38, QPSK - 20MHz, CH38000, Ant 5, Laptop

Device under Test Properties

Model, Manufacturer	Dimensions [mm]	S/N	DUT Type
HSN-I55C	235.0 x 295.0 x 20.0	00027705HB	Convertible PC

Exposure Conditions

Phantom Section, TSL	Position, Test Distance [mm]	Band	Group, UID	Frequency [MHz], Channel Number	Conversion Factor	TSL Conductivity [S/m]	TSL Permittivity
Flat, MSL	Laptop, 0.00	Band 38, E-UTRA/FDD	LTE-FDD, 10175-CAG	2595, 38000	9.63	2.06	51.2

Hardware Setup

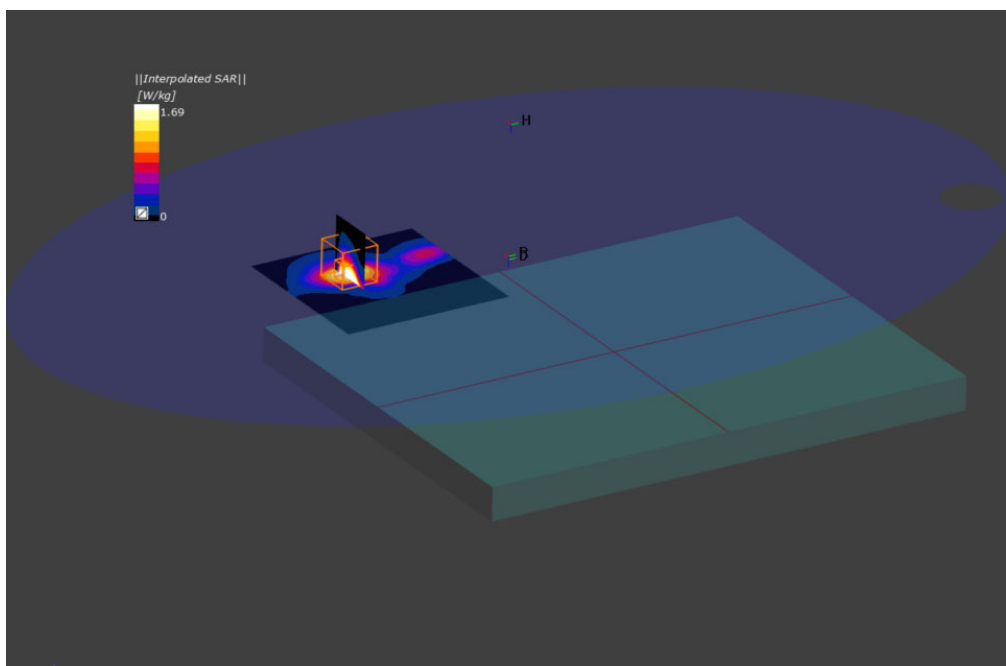
Phantom	TSL, Measured Date	Probe, Calibration Date	DAE, Calibration Date
ELI V8.0 (20deg probe tilt)	MABL-600-6000, 2022-Apr-20	EX3DV4 - SN7604, 2021-08-16	DAE4 Sn1703, 2022-04-28

Scan Setup

	Area Scan	Zoom Scan
Grid Extents [mm]	90.0 x 90.0	30.0 x 30.0 x 30.0
Grid Steps [mm]	15.0 x 15.0	4.9 x 4.9 x 1.4
Sensor Surface [mm]	3.0	1.4
Graded Grid	Yes	Yes
Grading Ratio	1.5	1.4
MAIA	Confirmed by MAIA	Confirmed by MAIA
Surface Detection	VMS + 6p	VMS + 6p
Scan Method	Measured	Measured

Measurement Results

	Area Scan	Zoom Scan
Date	2022-04-21, 11:23	2022-04-21, 11:23
psSAR1g [W/kg]	0.72	0.85
psSAR10g [W/kg]	0.35	0.39
Power Drift [dB]	-0.02	-0.01
Power Scaling	Disabled	Disabled
Scaling Factor		
TSL Correction	Positive Only	Positive Only
M2/M1 [%]		73.1
Dist 3dB Peak [mm]		4.6



14. LTE Band 41, QPSK - 20MHz, CH40620, Ant 8, Left edge

Device under Test Properties

Model, Manufacturer	Dimensions [mm]	S/N	DUT Type
HSN-I55C	235.0 x 295.0 x 20.0	00027705HB	Convertible PC

Exposure Conditions

Phantom Section, TSL	Position, Test Distance [mm]	Band	Group, UID	Frequency [MHz], Channel Number	Conversion Factor	TSL Conductivity [S/m]	TSL Permittivity
Flat, MSL	EDGE LEFT, 0.00	Band 41, E-UTRA/FDD	LTE-FDD, 10169-CAE	40620,2593 MHz	7.57	2.12	53.0

Hardware Setup

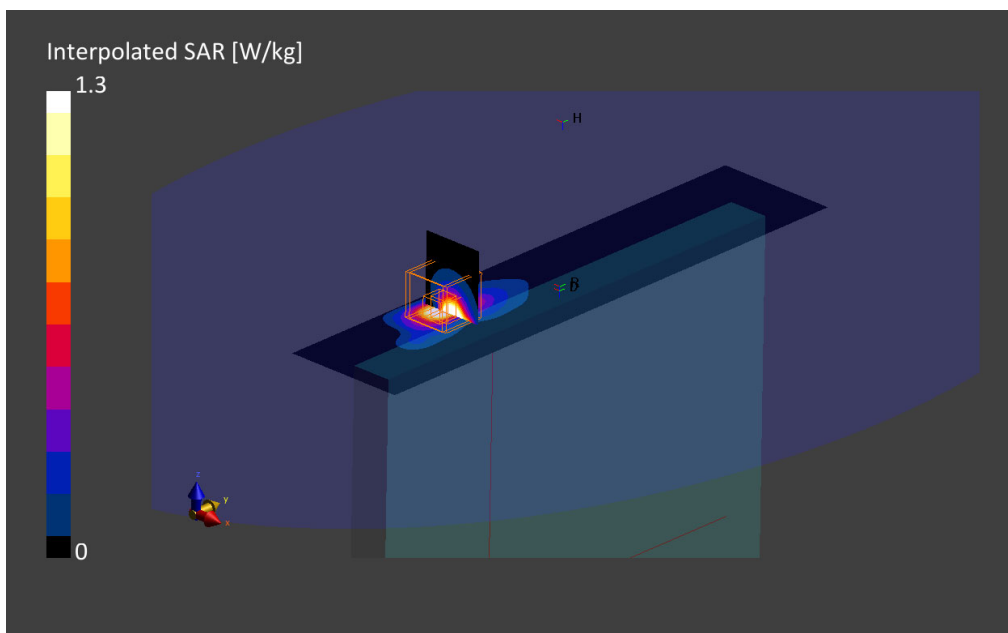
Phantom	TSL, Measured Date	Probe, Calibration Date	DAE, Calibration Date
ELI V8.0 (20deg probe tilt)	MBBL-600-6000 , 2022-May-30	EX3DV4 - SN7604, 2021-08-16	DAE4 Sn1703, 2022-04-28

Scan Setup

	Area Scan	Zoom Scan
Grid Extents [mm]	60.0 x 280.0	30.0 x 30.0 x 30.0
Grid Steps [mm]	10.0 x 10.0	4.5 x 4.5 x 1.5
Sensor Surface [mm]	3.0	1.4
Graded Grid	Yes	Yes
Grading Ratio	1.5	1.5
MAIA	Confirmed by MAIA	Confirmed by MAIA
Surface Detection	VMS + 6p	VMS + 6p
Scan Method	Measured	Measured

Measurement Results

	Area Scan	Zoom Scan
Date	2022-06-01, 13:24	2022-06-01, 13:32
psSAR1g [W/kg]	0.427	0.470
psSAR10g [W/kg]	0.160	0.159
Power Drift [dB]	-0.03	0.01
Power Scaling	Disabled	Disabled
Scaling Factor		
TSL Correction [dB]	Positive Only	Positive Only
M2/M1 [%]		77.4
Dist 3dB Peak [mm]		8.1



15. LTE Band 48, QPSK - 20MHz, CH55990, Ant 8, Left Edge

Device under Test Properties

Model, Manufacturer	Dimensions [mm]	S/N	DUT Type
HSN-I55C	235.0 x 295.0 x 20.0	00027705HB	Convertible PC

Exposure Conditions

Phantom Section, TSL	Position, Test Distance [mm]	Band	Group, UID	Frequency [MHz], Channel Number	Conversion Factor	TSL Conductivity [S/m]	TSL Permittivity
Flat, MSL	EDGE LEFT, 0.00	Band 48, E-UTRA/TDD	LTE-TDD, 10435-AAF	3560.0, 55340	6.15	3.09	51.2

Hardware Setup

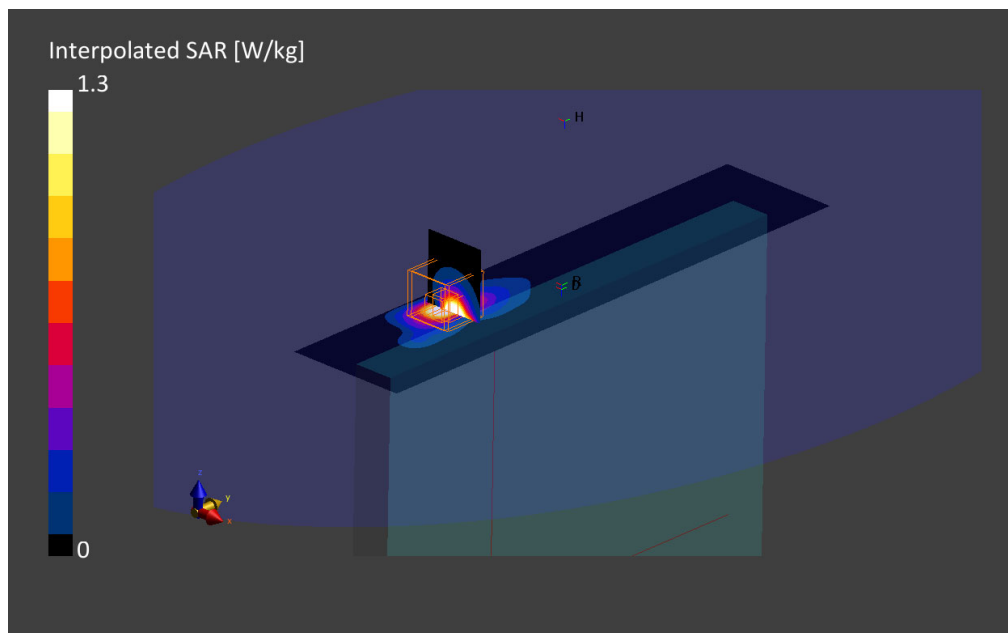
Phantom	TSL, Measured Date	Probe, Calibration Date	DAE, Calibration Date
ELI V8.0 (20deg probe tilt)	MBBL-600-6000 , 2022-Apr-25	EX3DV4 - SN7604, 2021-08-16	DAE4 Sn1703, 2022-04-28

Scan Setup

	Area Scan	Zoom Scan
Grid Extents [mm]	60.0 x 280.0	28.0 x 28.0 x 28.0
Grid Steps [mm]	10.0 x 10.0	3.1 x 3.1 x 1.2
Sensor Surface [mm]	3.0	1.4
Graded Grid	Yes	Yes
Grading Ratio	1.5	1.2
MAIA	Confirmed by MAIA	Confirmed by MAIA
Surface Detection	VMS + 6p	VMS + 6p
Scan Method	Measured	Measured

Measurement Results

	Area Scan	Zoom Scan
Date	2022-04-27, 15:20	2022-04-27, 15:20
psSAR1g [W/kg]	0.591	0.598
psSAR10g [W/kg]	0.195	0.176
Power Drift [dB]	-0.04	-0.05
Power Scaling	Disabled	Disabled
Scaling Factor		
TSL Correction	Positive Only	Positive Only
M2/M1 [%]		77.4
Dist 3dB Peak [mm]		8.1



16. LTE Band 66, QPSK - 20MHz, CH132572, Ant 5, Laptop

Device under Test Properties

Name, Manufacturer	Dimensions [mm]	S/N	DUT Type
HSN-I55C	235.0 x 295.0 x 20.0	00027705HB	Convertible PC

Exposure Conditions

Phantom Section, TSL	Position, Test Distance [mm]	Band	Group, UID	Frequency [MHz], Channel Number	Conversion Factor	TSL Conductivity [S/m]	TSL Permittivity
Flat, MSL	Laptop, 0.00	Band 66, E-UTRA/FDD	LTE-FDD, 10169-CAE	1770.0, 132572	8.37	1.40	51.5

Hardware Setup

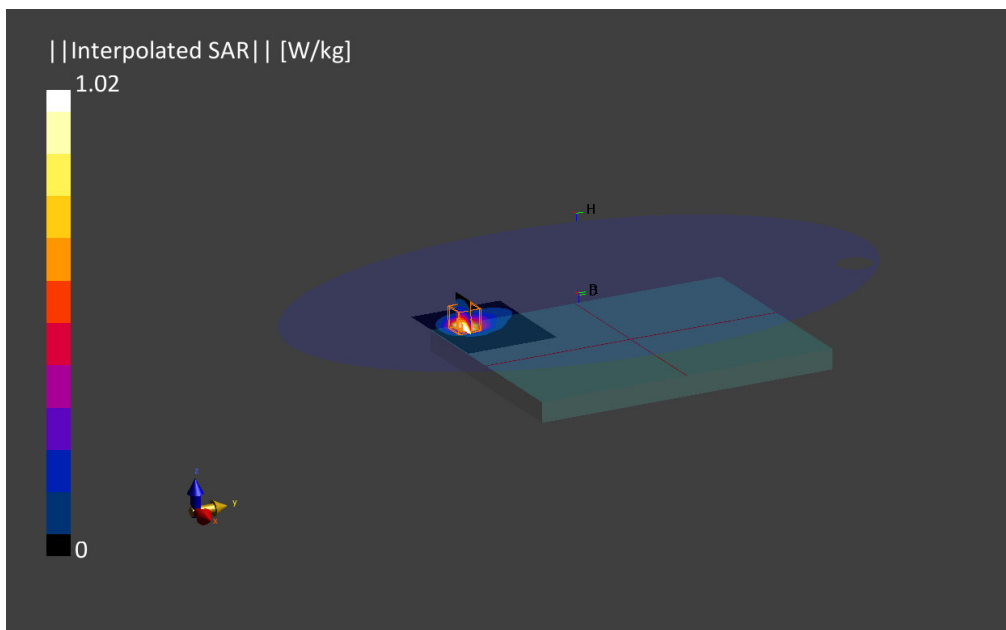
Phantom	TSL, Measured Date	Probe, Calibration Date	DAE, Calibration Date
ELI V8.0 (20deg probe tilt)	MABL-600-6000 2022-Apr-25	EX3DV4 - SN7604, 2021-08-16	DAE4 Sn1703, 2022-04-28

Scan Setup

	Area Scan	Zoom Scan
Grid Extents [mm]	120.0 x 90.0	30.0 x 30.0 x 30.0
Grid Steps [mm]	15.0 x 15.0	6.0 x 6.0 x 1.5
Sensor Surface [mm]	3.0	1.4
Graded Grid	Yes	Yes
Grading Ratio	1.5	1.5
MAIA	Confirmed by MAIA	Confirmed by MAIA
Surface Detection	VMS + 6p	VMS + 6p
Scan Method	Measured	Measured

Measurement Results

	Area Scan	Zoom Scan
Date	2022-04-26, 12:38	2022-04-26, 12:44
psSAR1g [W/kg]	0.940	0.991
psSAR10g [W/kg]	0.500	0.512
Power Drift [dB]	0.00	-0.01
Power Scaling	Disabled	Disabled
Scaling Factor [dB]		
TSL Correction	Positive Only	Positive Only
M2/M1 [%]		84.0
Dist 3dB Peak [mm]		14.5



17. LTE Band 71, QPSK - 20MHz, CH133297, Ant 5, Bottom Edge

Device under Test Properties

Name, Manufacturer	Dimensions [mm]	S/N	DUT Type
HSN-I55C	235.0 x 295.0 x 20.0	00027705HB	Convertible PC

Exposure Conditions

Phantom Section, TSL	Position, Test Distance [mm]	Band	Group, UID	Frequency [MHz], Channel Number	Conversion Factor	TSL Conductivity [S/m]	TSL Permittivity
Flat, MSL	EDGE, BOTTOM, 0.00	Band 71, E-UTRA/FDD	LTE-FDD, 10169-CAE	680.5, 133297	9.69	0.89	52.9

Hardware Setup

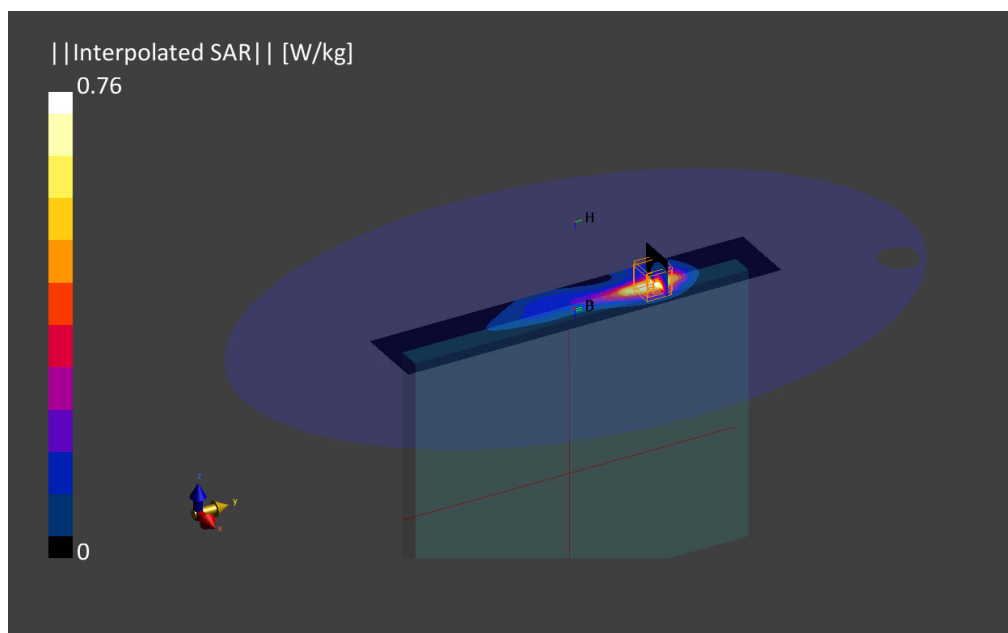
Phantom	TSL, Measured Date	Probe, Calibration Date	DAE, Calibration Date
ELI V8.0 (20deg probe tilt)	MBBL-600-6000 2022-Jun-14	EX3DV4 - SN7455, 2022-03-21	DAE4 Sn1703, 2022-04-28

Scan Setup

	Area Scan	Zoom Scan
Grid Extents [mm]	60.0 x 330.0	30.0 x 30.0 x 30.0
Grid Steps [mm]	15.0 x 15.0	5.8 x 5.8 x 1.5
Sensor Surface [mm]	3.0	1.4
Graded Grid	Yes	Yes
Grading Ratio	1.5	1.5
MAIA	Confirmed by MAIA	Confirmed by MAIA
Surface Detection	VMS + 6p	VMS + 6p
Scan Method	Measured	Measured

Measurement Results

	Area Scan	Zoom Scan
Date	2022-06-14, 18:54	2022-06-14, 19:02
psSAR1g [W/kg]	0.631	0.757
psSAR10g [W/kg]	0.381	0.332
Power Drift [dB]	-0.01	-0.03
Power Scaling	Disabled	Disabled
Scaling Factor		
TSL Correction	Positive Only	Positive Only
M2/M1 [%]		85.0
Dist 3dB Peak [mm]		10.9



18. 5G NR FR1 Band 2, QPSK – 20MHz, CH372000, Ant 8 – Left Edge

Device under Test Properties

Model, Manufacturer	Dimensions [mm]	S/N	DUT Type
HSN-I55C	220.0 x 290.0 x 20.0	00027705FM	Convertible PC

Exposure Conditions

Phantom Section, TSL	Position, Test Distance [mm]	Band	Group, UID	Frequency [MHz], Channel Number	Conversion Factor	TSL Conductivity [S/m]	TSL Permittivity
Flat, MSL	EDGE LEFT, 0.00	Band n2	5G NR FR1 FDD, 10939-AAB	1860.0, 372000	7.59	1.53	53.8

Hardware Setup

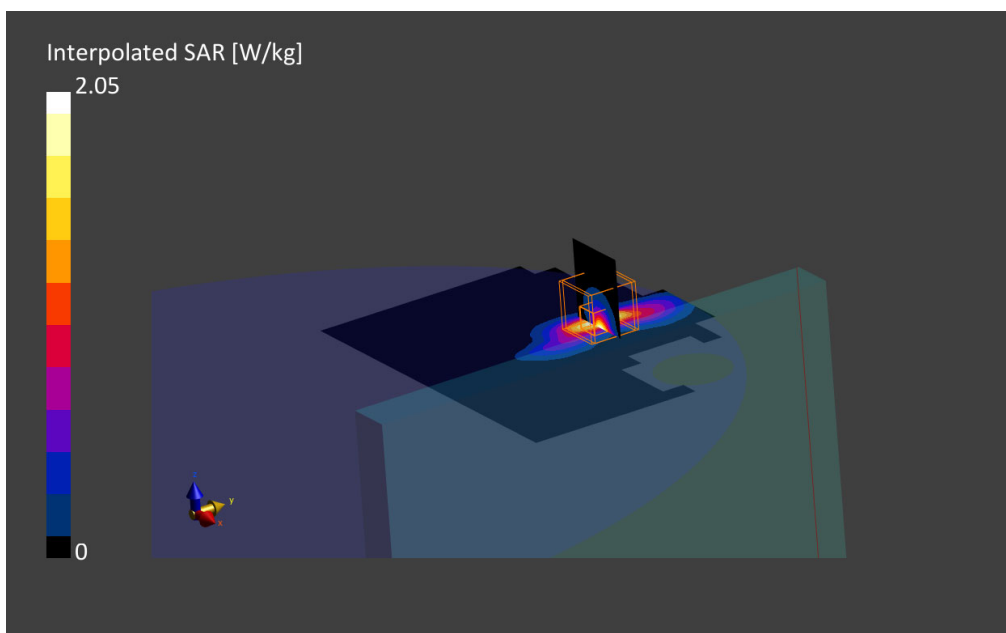
Phantom	TSL, Measured Date	Probe, Calibration Date	DAE, Calibration Date
ELI V8.0 (20deg probe tilt) - 2124	MABL-600-6000, 2022-May-19	EX3DV4 - SN7455, 2022-03-21	DAE4 Sn1517, 2021-03-11

Scan Setup

	Area Scan	Zoom Scan
Grid Extents [mm]	160.0 x 160.0	30.0 x 30.0 x 30.0
Grid Steps [mm]	10.0 x 10.0	5.3 x 5.3 x 1.4
Sensor Surface [mm]	3.0	1.4
Graded Grid	Yes	Yes
Grading Ratio	1.5	1.4
MAIA	Confirmed by MAIA	Confirmed by MAIA
Surface Detection	VMS + 6p	VMS + 6p
Scan Method	Measured	Measured

Measurement Results

	Area Scan	Zoom Scan
Date	2022-05-19, 13:44	2022-05-19, 13:56
psSAR1g [W/Kg]	0.819	0.853
psSAR10g [W/Kg]	0.370	0.365
Power Drift [dB]	0.04	0.04
Power Scaling	Disabled	Disabled
Scaling Factor [dB]		
TSL Correction	Positive Only	Positive Only
M2/M1 [%]		80.3
Dist 3dB Peak [mm]		5.3



19. 5G NR FR1 Band 5, QPSK – 20MHz, CH167300, Ant 5 – Bottom Edge

Device under Test Properties

Model, Manufacturer	Dimensions [mm]	S/N	DUT Type
HSN-I55C	220.0 x 290.0 x 20.0	00027705FM	Convertible PC

Exposure Conditions

Phantom Section, TSL	Position, Test Distance [mm]	Band	Group, UID	Frequency [MHz], Channel Number	Conversion Factor	TSL Conductivity [S/m]	TSL Permittivity
Flat, MSL	EDGE, BOTTOM, 0.00	Band n5	5G NR FR1 FDD, 10931-AAB	836.5, 167300	9.34	0.967	55.0

Hardware Setup

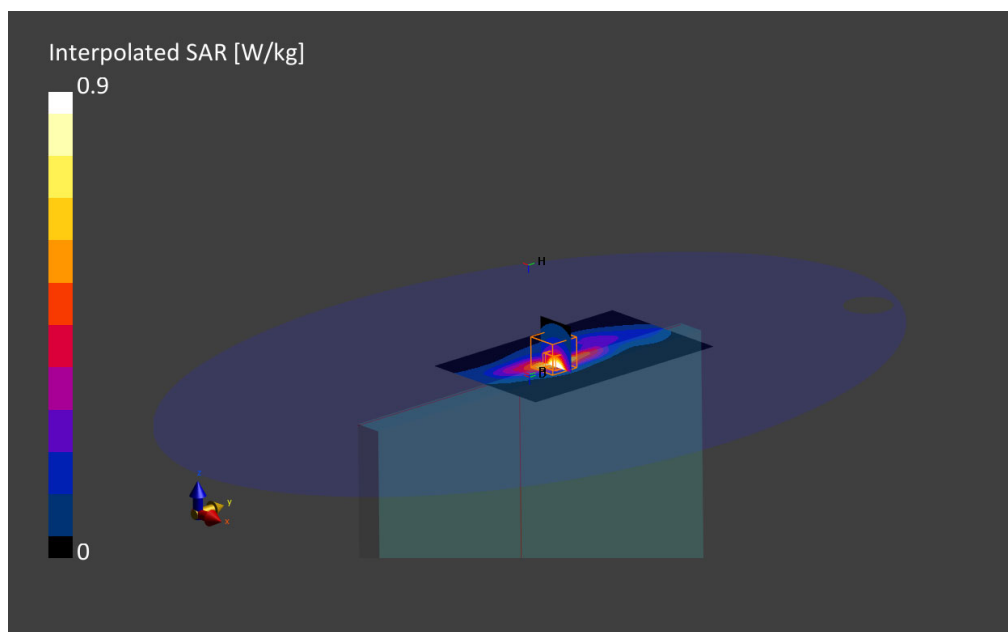
Phantom	TSL, Measured Date	Probe, Calibration Date	DAE, Calibration Date
ELI V8.0 (20deg probe tilt) - 2124	MABL-600-6000, 2022-May-16	EX3DV4 - SN7455, 2022-03-21	DAE4 Sn1517, 2021-03-11

Scan Setup

	Area Scan	Zoom Scan
Grid Extents [mm]	100.0 x 160.0	30.0 x 30.0 x 30.0
Grid Steps [mm]	10.0 x 10.0	6.0 x 6.0 x 1.5
Sensor Surface [mm]	3.0	1.4
Graded Grid	Yes	Yes
Grading Ratio	1.5	1.5
MAIA	Confirmed by MAIA	Confirmed by MAIA
Surface Detection	VMS + 6p	VMS + 6p
Scan Method	Measured	Measured

Measurement Results

	Area Scan	Zoom Scan
Date	2022-05-16, 15:14	2022-05-16, 15:22
psSAR1g [W/Kg]	0.708	0.713
psSAR10g [W/Kg]	0.391	0.362
Power Drift [dB]	0.03	0.02
Power Scaling	Disabled	Disabled
Scaling Factor [dB]		
TSL Correction	Positive Only	Positive Only
M2/M1 [%]		73.8
Dist 3dB Peak [mm]		7.2



20. 5G NR FR1 Band 7, QPSK – 20MHz, CH507000, Ant 5 – Bottom Edge

Device under Test Properties

Model, Manufacturer	Dimensions [mm]	S/N	DUT Type
HSN-I55C	220.0 x 290.0 x 20.0	00027705FM	Convertible PC

Exposure Conditions

Phantom Section, TSL	Position, Test Distance [mm]	Band	Group, UID	Frequency [MHz], Channel Number	Conversion Factor	TSL Conductivity [S/m]	TSL Permittivity
Flat, MSL	EDGE BOTTOM, 0.00	Band n7	5G NR FR1 FDD, 10939-AAB	2535.0, 507000	7.3	2.06	52.7

Hardware Setup

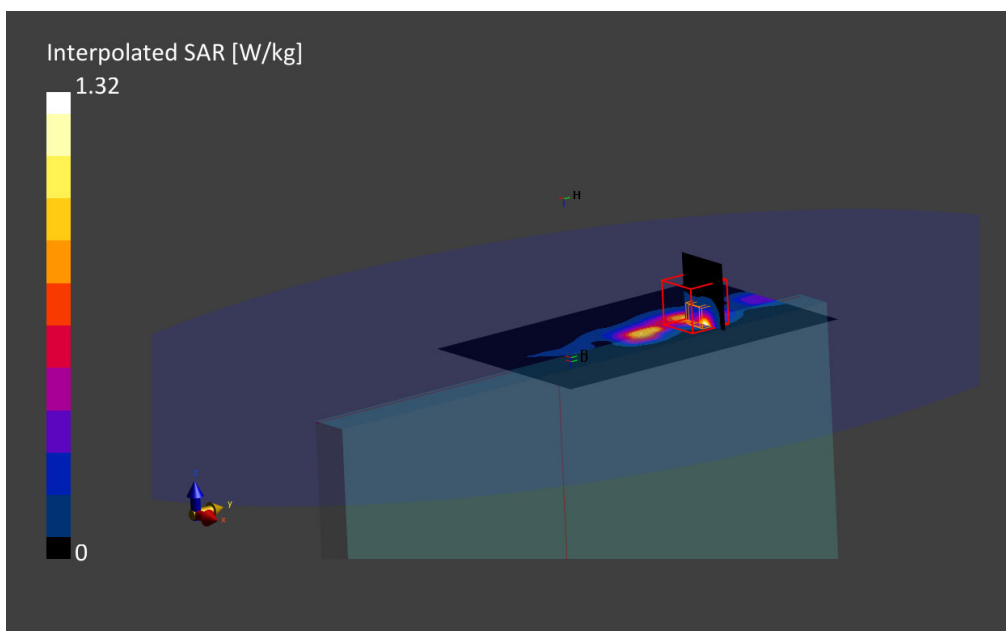
Phantom	TSL, Measured Date	Probe, Calibration Date	DAE, Calibration Date
ELI V8.0 (20deg probe tilt) - 2124	MBBL-600-6000, 2022-May-16	EX3DV4 - SN7455, 2022-03-21	DAE4 Sn1517, 2021-03-11

Scan Setup

	Area Scan	Zoom Scan
Grid Extents [mm]	100.0 x 160.0	30.0 x 30.0 x 30.0
Grid Steps [mm]	10.0 x 10.0	5.0 x 5.0 x 1.5
Sensor Surface [mm]	3.0	1.4
Graded Grid	Yes	Yes
Grading Ratio	1.5	1.5
MAIA	Confirmed by MAIA	Confirmed by MAIA
Surface Detection	VMS + 6p	VMS + 6p
Scan Method	Measured	Measured

Measurement Results

	Area Scan	Zoom Scan
Date	2022-05-16, 18:58	2022-05-16, 19:08
psSAR1g [W/Kg]	0.425	0.461
psSAR10g [W/Kg]	0.187	0.194
Power Drift [dB]	0.07	0.01
Power Scaling	Disabled	Disabled
Scaling Factor [dB]		
TSL Correction	Positive Only	Positive Only
M2/M1 [%]		74.6
Dist 3dB Peak [mm]		5.8



21.5G NR FR1 Band 25, QPSK – 20MHz, CH376500, Ant 5 – Bottom Edge

Device under Test Properties

Model, Manufacturer	Dimensions [mm]	S/N	DUT Type
HSN-I55C	220.0 x 290.0 x 20.0	00027705FM	Convertible PC

Exposure Conditions

Phantom Section, TSL	Position, Test Distance [mm]	Band	Group, UID	Frequency [MHz], Channel Number	Conversion Factor	TSL Conductivity [S/m]	TSL Permittivity
Flat, MSL	EDGE, BOTTOM, 0.00	Band n25	5G NR FR1 FDD, 10931-AAB	1880.0, 376000	7.59	1.52	53.5

Hardware Setup

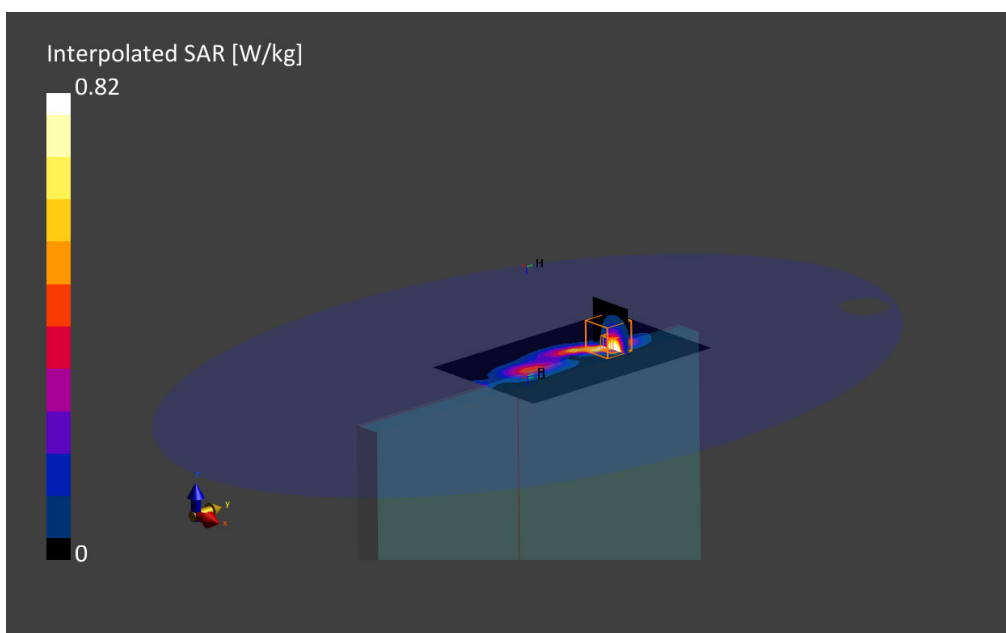
Phantom	TSL, Measured Date	Probe, Calibration Date	DAE, Calibration Date
ELI V8.0 (20deg probe tilt) - 2124	MABL-600-6000, 2022-May-16	EX3DV4 - SN7455, 2022-03-21	DAE4 Sn1517, 2021-03-11

Scan Setup

	Area Scan	Zoom Scan
Grid Extents [mm]	100.0 x 160.0	30.0 x 30.0 x 30.0
Grid Steps [mm]	10.0 x 10.0	5.8 x 5.8 x 1.5
Sensor Surface [mm]	3.0	1.4
Graded Grid	Yes	Yes
Grading Ratio	1.5	1.5
MAIA	Confirmed by MAIA	Confirmed by MAIA
Surface Detection	VMS + 6p	VMS + 6p
Scan Method	Measured	Measured

Measurement Results

	Area Scan	Zoom Scan
Date	2022-05-16, 20:04	2022-05-16, 20:14
psSAR1g [W/Kg]	0.616	0.632
psSAR10g [W/Kg]	0.280	0.296
Power Drift [dB]	0.04	0.05
Power Scaling	Disabled	Disabled
Scaling Factor [dB]		
TSL Correction	Positive Only	Positive Only
M2/M1 [%]		83.7
Dist 3dB Peak [mm]		7.0



22. 5G NR FR1 Band 30, QPSK – 10MHz, CH462000, Ant 5 – Bottom Edge

Device under Test Properties

Model, Manufacturer	Dimensions [mm]	S/N	DUT Type
HSN-I55C	220.0 x 290.0 x 20.0	00027705FM	Convertible PC

Exposure Conditions

Phantom Section, TSL	Position, Test Distance [mm]	Band	Group, UID	Frequency [MHz], Channel Number	Conversion Factor	TSL Conductivity [S/m]	TSL Permittivity
Flat, MSL	EDGE, BOTTOM, 0.00	Band n30	5G NR FR1 FDD, 10937-AAB	2310.0, 462000	7.51	1.85	53.0

Hardware Setup

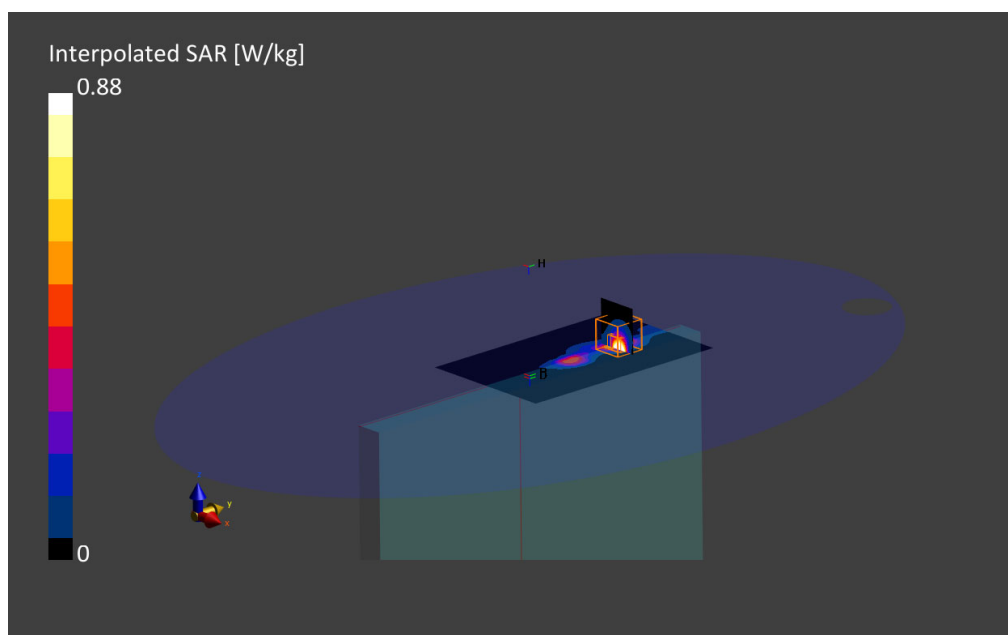
Phantom	TSL, Measured Date	Probe, Calibration Date	DAE, Calibration Date
ELI V8.0 (20deg probe tilt) - 2124	MBBL-600-6000, 2022-May-16	EX3DV4 - SN7455, 2022-03-21	DAE4 Sn1517, 2021-03-11

Scan Setup

	Area Scan	Zoom Scan
Grid Extents [mm]	100.0 x 160.0	30.0 x 30.0 x 30.0
Grid Steps [mm]	10.0 x 10.0	4.5 x 4.5 x 1.5
Sensor Surface [mm]	3.0	1.4
Graded Grid	Yes	Yes
Grading Ratio	1.5	1.5
MAIA	Confirmed by MAIA	Confirmed by MAIA
Surface Detection	VMS + 6p	VMS + 6p
Scan Method	Measured	Measured

Measurement Results

	Area Scan	Zoom Scan
Date	2022-05-16, 20:26	2022-05-16, 20:38
psSAR1g [W/Kg]	0.606	0.687
psSAR10g [W/Kg]	0.240	0.260
Power Drift [dB]	0.11	0.01
Power Scaling	Disabled	Disabled
Scaling Factor [dB]		
TSL Correction	Positive Only	Positive Only
M2/M1 [%]		77.4
Dist 3dB Peak [mm]		5.2



23. 5G NR FR1 Band 38, QPSK – 40MHz, CH519000, Ant 5 – Bottom Edge

Device under Test Properties

Model, Manufacturer	Dimensions [mm]	S/N	DUT Type
HSN-I55C	220.0 x 290.0 x 20.0	00027705FM	Convertible PC

Exposure Conditions

Phantom Section, TSL	Position, Test Distance [mm]	Band	Group, UID	Frequency [MHz], Channel Number	Conversion Factor	TSL Conductivity [S/m]	TSL Permittivity
Flat, MSL	EDGE BOTTOM, 0.00	Band n38	5G NR FR1 TDD, 10913-AAB	2595.0, 519000	7.3	2.11	52.6

Hardware Setup

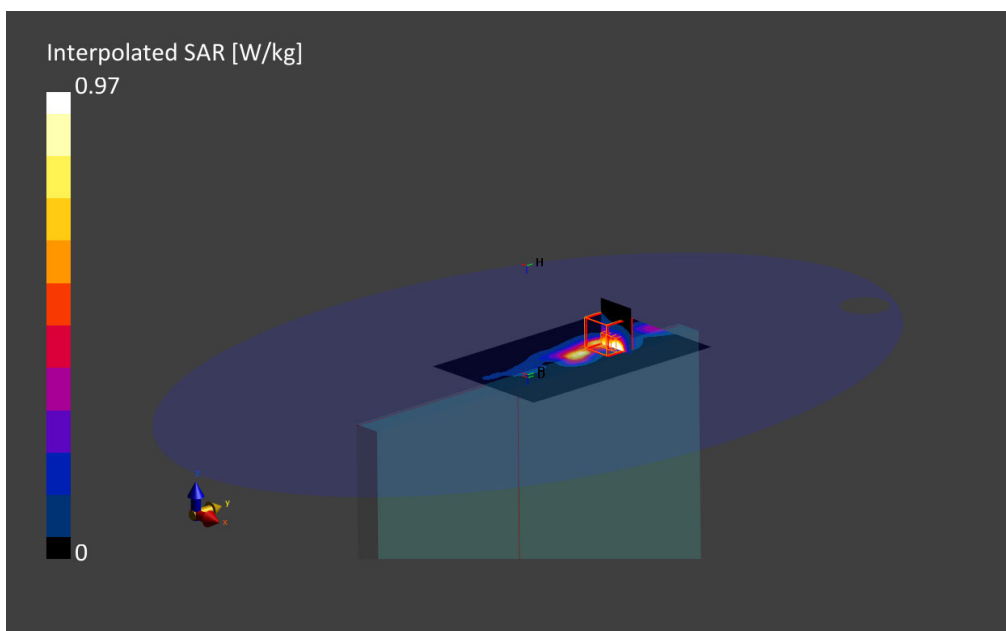
Phantom	TSL, Measured Date	Probe, Calibration Date	DAE, Calibration Date
ELI V8.0 (20deg probe tilt) - 2124	MBBL-600-6000, 2022-May-16	EX3DV4 - SN7455, 2022-03-21	DAE4 Sn1517, 2021-03-11

Scan Setup

	Area Scan	Zoom Scan
Grid Extents [mm]	100.0 x 160.0	30.0 x 30.0 x 30.0
Grid Steps [mm]	10.0 x 10.0	5.0 x 5.0 x 1.5
Sensor Surface [mm]	3.0	1.4
Graded Grid	Yes	Yes
Grading Ratio	1.5	1.5
MAIA	Confirmed by MAIA	Confirmed by MAIA
Surface Detection	VMS + 6p	VMS + 6p
Scan Method	Measured	Measured

Measurement Results

	Area Scan	Zoom Scan
Date	2022-05-16, 21:13	2022-05-16, 21:23
psSAR1g [W/Kg]	0.702	0.728
psSAR10g [W/Kg]	0.330	0.335
Power Drift [dB]	0.02	0.09
Power Scaling	Disabled	Disabled
Scaling Factor [dB]		
TSL Correction	Positive Only	Positive Only
M2/M1 [%]		73.0
Dist 3dB Peak [mm]		5.4



24. 5G NR FR1 Band 41, QPSK – 100MHz, CH518601, Ant 5 – Laptop

Device under Test Properties

Model, Manufacturer	Dimensions [mm]	S/N	DUT Type
HSN-I55C	220.0 x 290.0 x 20.0	00027705FL	Convertible PC

Exposure Conditions

Phantom Section, TSL	Position, Test Distance [mm]	Band	Group, UID	Frequency [MHz], Channel Number	Conversion Factor	TSL Conductivity [S/m]	TSL Permittivity
Flat, MSL	Laptop, 0.00	Band n41	5G NR FR1 TDD, 10917-AAB	2593.0, 518598	7.3	2.14	52.9

Hardware Setup

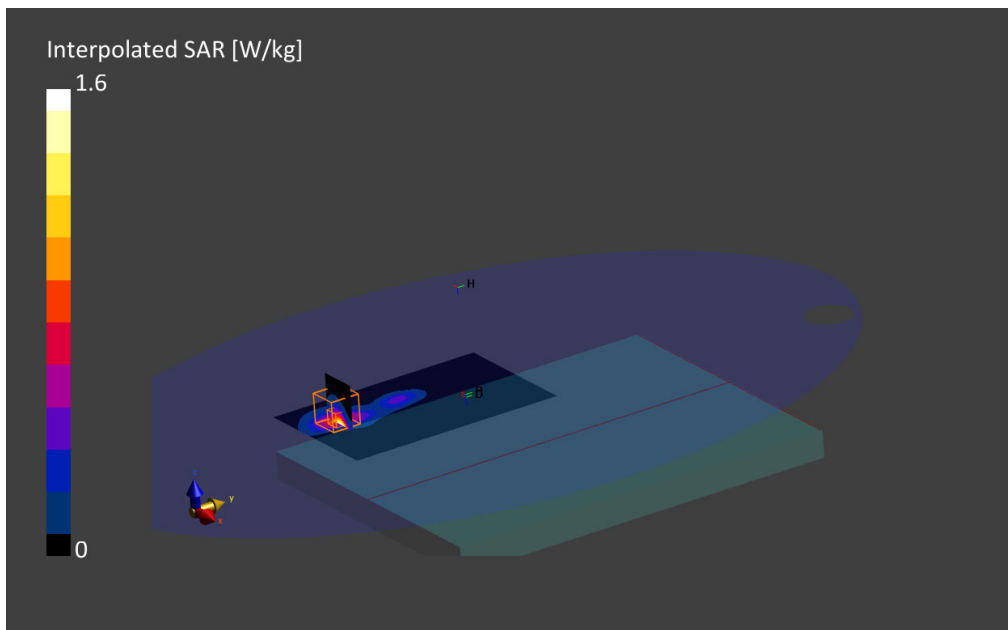
Phantom	TSL, Measured Date	Probe, Calibration Date	DAE, Calibration Date
ELI V8.0 (20deg probe tilt) - 2124	MBBL-600-6000, 2022-May-19	EX3DV4 - SN7455, 2022-03-21	DAE4 Sn1517, 2021-03-11

Scan Setup

	Area Scan	Zoom Scan
Grid Extents [mm]	100.0 x 160.0	30.0 x 30.0 x 30.0
Grid Steps [mm]	10.0 x 10.0	5.0 x 5.0 x 1.5
Sensor Surface [mm]	3.0	1.4
Graded Grid	Yes	Yes
Grading Ratio	1.5	1.5
MAIA	Confirmed by MAIA	Confirmed by MAIA
Surface Detection	VMS + 6p	VMS + 6p
Scan Method	Measured	Measured

Measurement Results

	Area Scan	Zoom Scan
Date	2022-05-20, 17:45	2022-05-20, 17:56
psSAR1g [W/Kg]	0.768	0.802
psSAR10g [W/Kg]	0.368	0.372
Power Drift [dB]	-0.02	-0.01
Power Scaling	Disabled	Disabled
Scaling Factor [dB]		
TSL Correction	Positive Only	Positive Only
M2/M1 [%]		82.7
Dist 3dB Peak [mm]		8.0



25. 5G NR FR1 Band 66, QPSK – 40MHz, CH349000, Ant 5 – Laptop

Device under Test Properties

Model, Manufacturer	Dimensions [mm]	S/N	DUT Type
HSN-I55C	220.0 x 290.0 x 20.0	00027705FL	Convertible PC

Exposure Conditions

Phantom Section, TSL	Position, Test Distance [mm]	Band	Group, UID	Frequency [MHz], Channel Number	Conversion Factor	TSL Conductivity [S/m]	TSL Permittivity
Flat, MSL	Laptop, 0.00	Band n66	5G NR FR1 FDD, 10950-AAB	1745.0, 349000	9.02	1.52	51.9

Hardware Setup

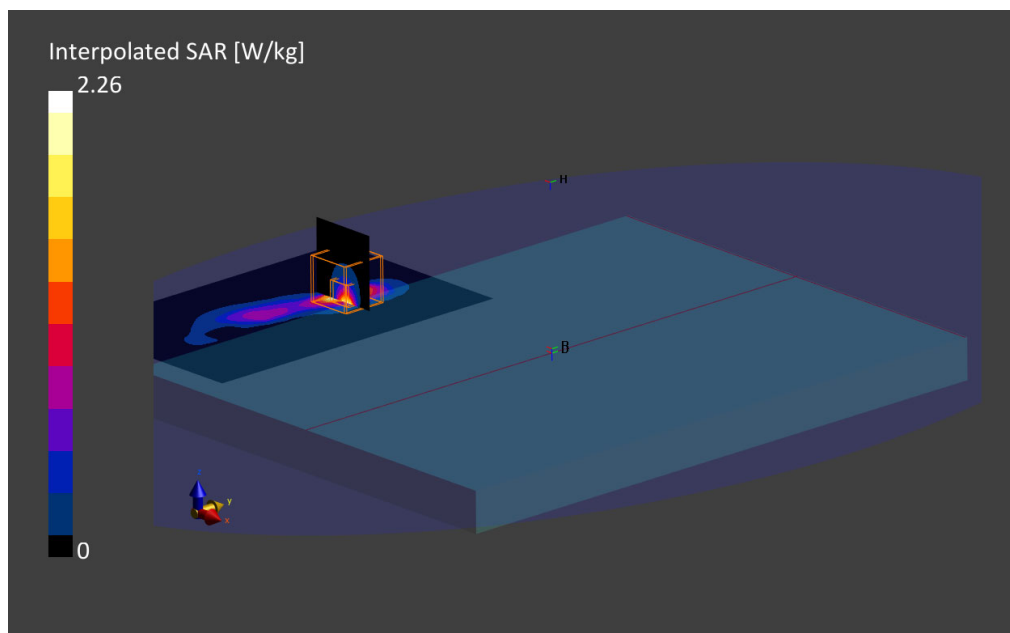
Phantom	TSL, Measured Date	Probe, Calibration Date	DAE, Calibration Date
ELI V8.0 (20deg probe tilt) - 2124	MABL-600-6000, 2022-May-09	EX3DV4 - SN7604, 2021-08-16	DAE4 Sn1628, 2021-08-06

Scan Setup

	Area Scan	Zoom Scan
Grid Extents [mm]	100.0 x 160.0	30.0 x 30.0 x 30.0
Grid Steps [mm]	10.0 x 10.0	4.9 x 4.9 x 1.4
Sensor Surface [mm]	3.0	1.4
Graded Grid	Yes	Yes
Grading Ratio	1.5	1.4
MAIA	Confirmed by MAIA	Confirmed by MAIA
Surface Detection	VMS + 6p	VMS + 6p
Scan Method	Measured	Measured

Measurement Results

	Area Scan	Zoom Scan
Date	2022-05-11, 02:55	2022-05-11, 03:08
psSAR1g [W/Kg]	0.754	0.889
psSAR10g [W/Kg]	0.331	0.344
Power Drift [dB]	-0.05	-0.06
Power Scaling	Disabled	Disabled
Scaling Factor [dB]		
TSL Correction	Positive Only	Positive Only
M2/M1 [%]		77.2
Dist 3dB Peak [mm]		4.9



26.5G NR FR1 Band 71, QPSK – 20MHz, CH136100, Ant 5 – Bottom Edge

Device under Test Properties

Model, Manufacturer	Dimensions [mm]	S/N	DUT Type
HSN-I55C	220.0 x 290.0 x 20.0	00027705FM	Convertible PC

Exposure Conditions

Phantom Section, TSL	Position, Test Distance [mm]	Band	Group, UID	Frequency [MHz], Channel Number	Conversion Factor	TSL Conductivity [S/m]	TSL Permittivity
Flat, MSL	EDGE, BOTTOM, 0.00	Band n71	5G NR FR1 FDD, 10931-AAB	680.5, 136100	9.69	0.883	55.0

Hardware Setup

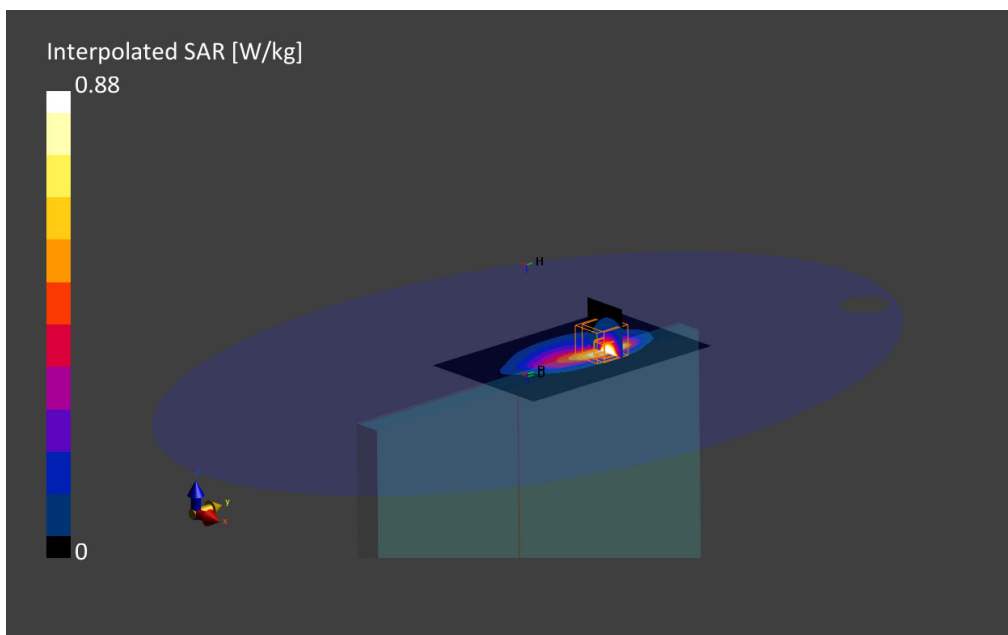
Phantom	TSL, Measured Date	Probe, Calibration Date	DAE, Calibration Date
ELI V8.0 (20deg probe tilt) - 2124	MBBL-600-6000, 2022-Jun-13	EX3DV4 - SN7455, 2022-03-21	DAE4ip Sn1704, 2022-04-29

Scan Setup

	Area Scan	Zoom Scan
Grid Extents [mm]	100.0 x 160.0	30.0 x 30.0 x 30.0
Grid Steps [mm]	10.0 x 10.0	4.9 x 4.9 x 1.4
Sensor Surface [mm]	3.0	1.4
Graded Grid	Yes	Yes
Grading Ratio	1.5	1.4
MAIA	Confirmed by MAIA	Confirmed by MAIA
Surface Detection	VMS + 6p	VMS + 6p
Scan Method	Measured	Measured

Measurement Results

	Area Scan	Zoom Scan
Date	2022-06-13, 12:41	2022-06-13, 12:55
psSAR1g [W/Kg]	0.704	0.810
psSAR10g [W/Kg]	0.397	0.366
Power Drift [dB]	-0.03	0.11
Power Scaling	Disabled	Disabled
Scaling Factor [dB]		
TSL Correction	Positive Only	Positive Only
M2/M1 [%]		68.7
Dist 3dB Peak [mm]		5.9



27. 5G NR FR1 Band 77, QPSK – 100MHz, CH650000, Ant 5 – Bottom Edge

Device under Test Properties

Model, Manufacturer	Dimensions [mm]	IMEI	DUT Type
HSN-I55C	220.0 x 290.0 x 20.0	00027705FM	Convertible PC

Exposure Conditions

Phantom Section, TSL	Position, Test Distance [mm]	Band	Group, UID	Frequency [MHz], Channel Number	Conversion Factor	TSL Conductivity [S/m]	TSL Permittivity
Flat, MSL	EDGE, BOTTOM, 0.00	Band n77	5G NR FR1 TDD, 10868-AAD	3750.0, 650000	6.13	3.31	50.5

Hardware Setup

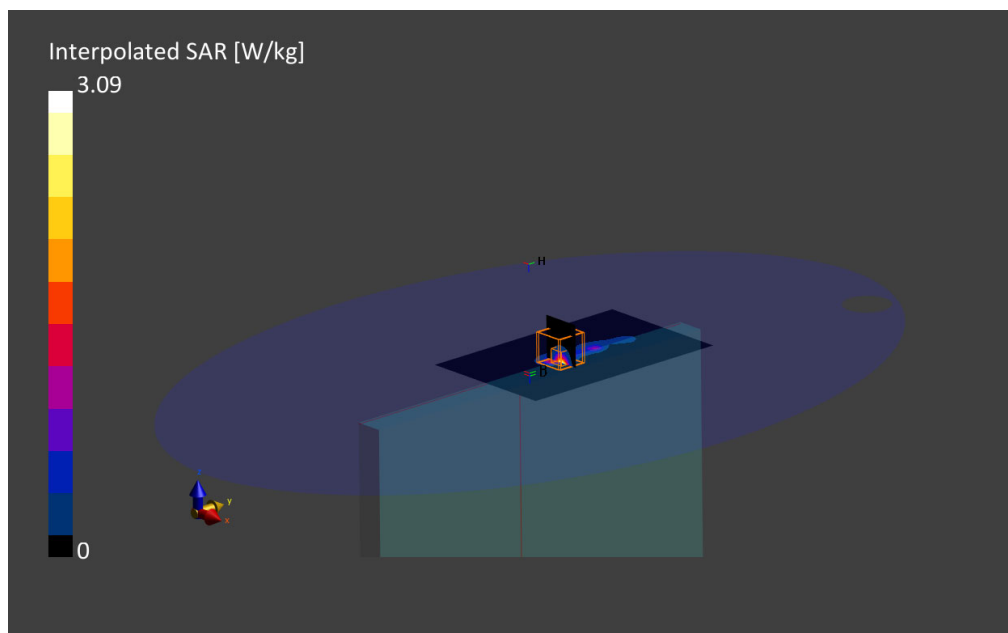
Phantom	TSL, Measured Date	Probe, Calibration Date	DAE, Calibration Date
ELI V8.0 (20deg probe tilt) - 2124	MBBL-600-6000, 2022-May-16	EX3DV4 - SN7455, 2022-03-21	DAE4 Sn1517, 2021-03-11

Scan Setup

	Area Scan	Zoom Scan
Grid Extents [mm]	100.0 x 160.0	28.0 x 28.0 x 28.0
Grid Steps [mm]	10.0 x 10.0	4.8 x 4.8 x 1.4
Sensor Surface [mm]	3.0	1.4
Graded Grid	Yes	Yes
Grading Ratio	1.5	1.5
MAIA	Confirmed by MAIA	Confirmed by MAIA
Surface Detection	VMS + 6p	VMS + 6p
Scan Method	Measured	Measured

Measurement Results

	Area Scan	Zoom Scan
Date	2022-05-17, 11:29	2022-05-17, 11:39
psSAR1g [W/Kg]	0.963	1.00
psSAR10g [W/Kg]	0.283	0.304
Power Drift [dB]	0.01	0.01
Power Scaling	Disabled	Disabled
Scaling Factor [dB]		
TSL Correction	Positive Only	Positive Only
M2/M1 [%]		74.3
Dist 3dB Peak [mm]		5.2



28.5G NR FR1 Band 78, QPSK – 100MHz, CH650000, Ant 8 – Left Edge

Device under Test Properties

Model, Manufacturer	Dimensions [mm]	S/N	DUT Type
HSN-I55C	220.0 x 290.0 x 20.0	00027705FM	Convertible PC

Exposure Conditions

Phantom Section, TSL	Position, Test Distance [mm]	Band	Group, UID	Frequency [MHz], Channel Number	Conversion Factor	TSL Conductivity [S/m]	TSL Permittivity
Flat, MSL	EDGE LEFT, 0.00	Band n78	5G NR FR1 TDD, 10917-AAB	3750.0, 650000	6.13	3.35	50.7

Hardware Setup

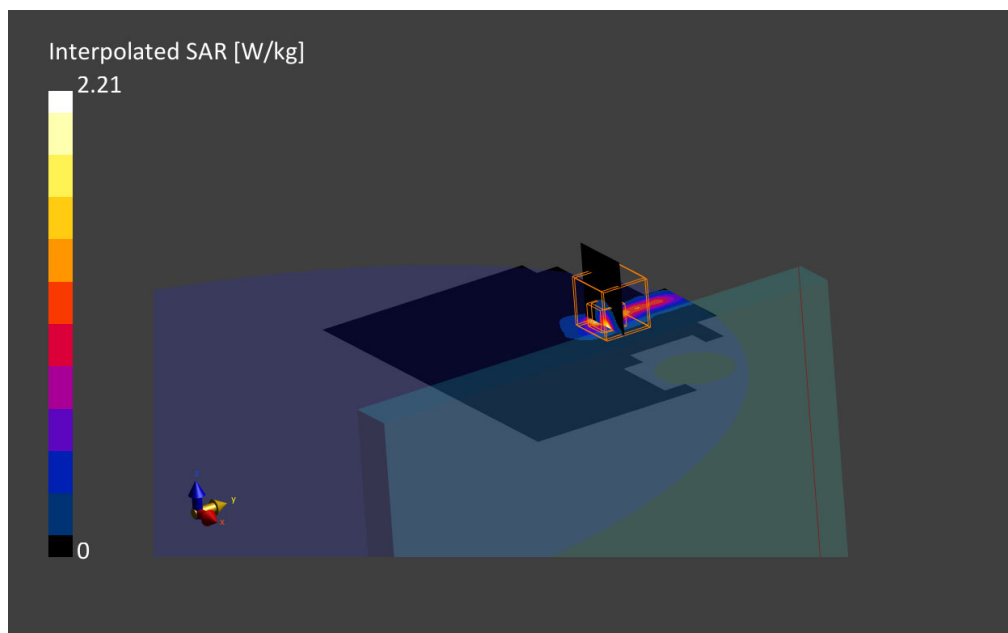
Phantom	TSL, Measured Date	Probe, Calibration Date	DAE, Calibration Date
ELI V8.0 (20deg probe tilt) - 2124	MBBL-600-6000, 2022-May-19	EX3DV4 - SN7455, 2022-03-21	DAE4 Sn1517, 2021-03-11

Scan Setup

	Area Scan	Zoom Scan
Grid Extents [mm]	160.0 x 160.0	28.0 x 28.0 x 28.0
Grid Steps [mm]	10.0 x 10.0	3.2 x 3.2 x 1.2
Sensor Surface [mm]	3.0	1.4
Graded Grid	Yes	Yes
Grading Ratio	1.5	1.2
MAIA	Confirmed by MAIA	Confirmed by MAIA
Surface Detection	VMS + 6p	VMS + 6p
Scan Method	Measured	Measured

Measurement Results

	Area Scan	Zoom Scan
Date	2022-05-19, 21:30	2022-05-19, 21:54
psSAR1g [W/Kg]	0.544	0.677
psSAR10g [W/Kg]	0.178	0.191
Power Drift [dB]	0.01	-0.10
Power Scaling	Disabled	Disabled
Scaling Factor [dB]		
TSL Correction	Positive Only	Positive Only
M2/M1 [%]		78.1
Dist 3dB Peak [mm]		4.5



29. System Check Body Liquid 750MHz – 2022-04-21 – System2

Device under Test Properties

Name, Manufacturer	Dimensions [mm]	Serial Number	DUT Type
Dipole 750MHz, SPEAG	50.0 x 10.0 x 8.0	1136	Validation Dipole

Exposure Conditions

Phantom Section, TSL	Position, Test Distance [mm]	Band	Group, UID	Frequency [MHz], Channel Number	Conversion Factor	TSL Conductivity [S/m]	TSL Permittivity
Flat, MSL	,	,	0--	750.0, 0	9.63	0.91	53.5

Hardware Setup

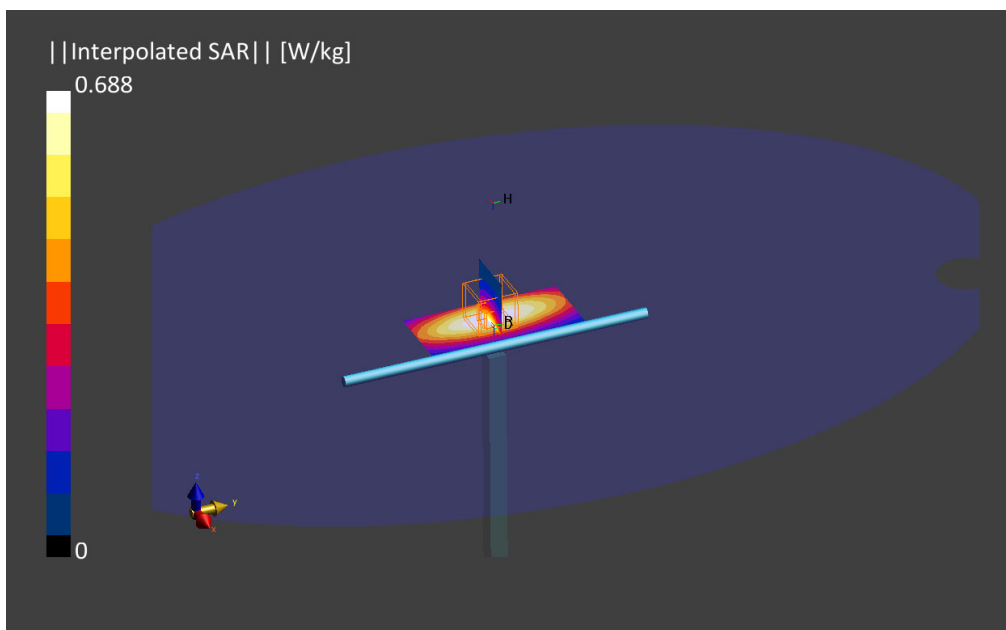
Phantom	TSL, Measured Date	Probe, Calibration Date	DAE, Calibration Date
ELI V8.0 (20deg probe tilt)	MBBL-600-6000 , 2022-Apr-20	EX3DV4 - SN7604, 2021-08-16	DAE4 Sn1703, 2022-04-28

Scan Setup

	Area Scan	Zoom Scan
Grid Extents [mm]	40.0 x 90.0	30.0 x 30.0 x 30.0
Grid Steps [mm]	10.0 x 15.0	6.0 x 6.0 x 1.5
Sensor Surface [mm]	3.0	1.4
Graded Grid	Yes	Yes
Grading Ratio	1.5	1.5
MAIA	Confirmed by MAIA	Confirmed by MAIA
Surface Detection	VMS + 6p	VMS + 6p
Scan Method	Measured	Measured

Measurement Results

	Area Scan	Zoom Scan
Date	2022-04-21, 07:40	2022-04-21, 07:45
psSAR1g [W/kg]	0.453	0.444
psSAR10g [W/kg]	0.304	0.291
Power Drift [dB]	-0.07	-0.07
Power Scaling	Disabled	Disabled
Scaling Factor		
TSL Correction	Positive Only	Positive Only
M2/M1 [%]		87.7
Dist 3dB Peak [mm]		23.1



30. System Check Body Liquid 750MHz – 2022-06-14 – System 2

Device under Test Properties

Name, Manufacturer	Dimensions [mm]	Serial Number	DUT Type
Dipole 750MHz, SPEAG	50.0 x 10.0 x 8.0	1136	Validation Dipole

Exposure Conditions

Phantom Section, TSL	Position, Test Distance [mm]	Band	Group, UID	Frequency [MHz], Channel Number	Conversion Factor	TSL Conductivity [S/m]	TSL Permittivity
Flat, MSL	,	,	0--	750.0, 0	9.69	0.92	52.3

Hardware Setup

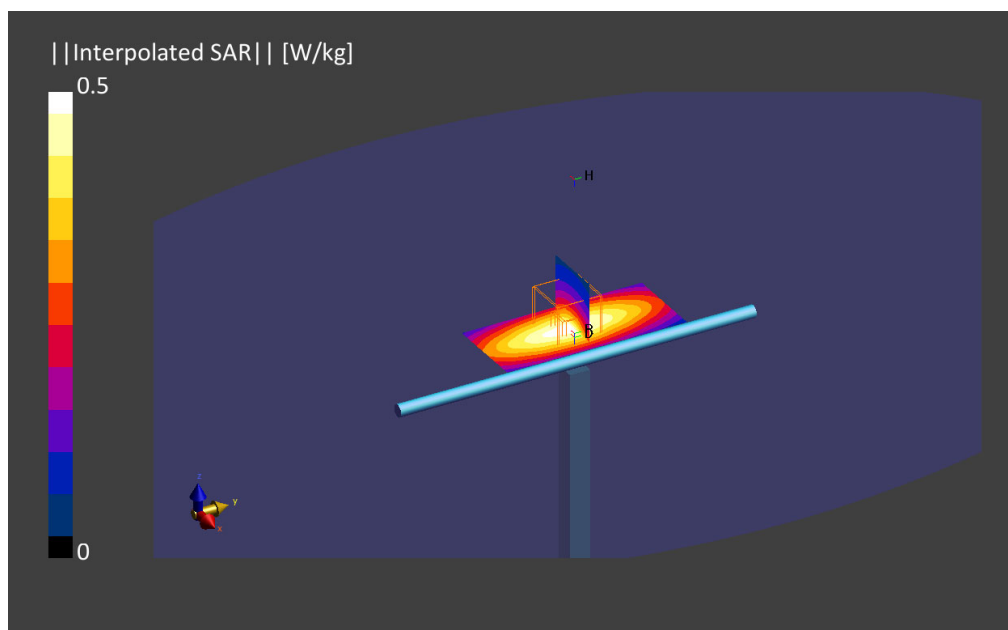
Phantom	TSL, Measured Date	Probe, Calibration Date	DAE, Calibration Date
ELI V8.0 (20deg probe tilt)	MABL-600-6000 , 2022-Jun-13	EX3DV4 - SN7604, 2021-08-16	DAE4 Sn1703, 2022-04-28

Scan Setup

	Area Scan	Zoom Scan
Grid Extents [mm]	40.0 x 90.0	30.0 x 30.0 x 30.0
Grid Steps [mm]	10.0 x 15.0	6.0 x 6.0 x 1.5
Sensor Surface [mm]	3.0	1.4
Graded Grid	Yes	Yes
Grading Ratio	1.5	1.5
MAIA	Confirmed by MAIA	Confirmed by MAIA
Surface Detection	VMS + 6p	VMS + 6p
Scan Method	Measured	Measured

Measurement Results

	Area Scan	Zoom Scan
Date	2022-06-14, 11:15	2022-06-14, 11:21
psSAR1g [W/kg]	0.419	0.427
psSAR10g [W/kg]	0.279	0.286
Power Drift [dB]	-0.00	0.01
Power Scaling	Disabled	Disabled
Scaling Factor [dB]		
TSL Correction	Positive Only	Positive Only
M2/M1 [%]		87.5
Dist 3dB Peak [mm]		22.9



31. System Check Body Liquid 750MHz – 2022-06-13 – System 4

Device under Test Properties

Model, Manufacturer	Dimensions [mm]	S/N	DUT Type
Dipole 750MHz, SPEAG	50.0 x 10.0 x 8.0	1136	Validation Dipole

Exposure Conditions

Phantom Section, TSL	Position, Test Distance [mm]	Band	Group, UID	Frequency [MHz], Channel Number	Conversion Factor	TSL Conductivity [S/m]	TSL Permittivity
Flat, MSL	,		0--	750.0, 0	9.69	0.906	54.8

Hardware Setup

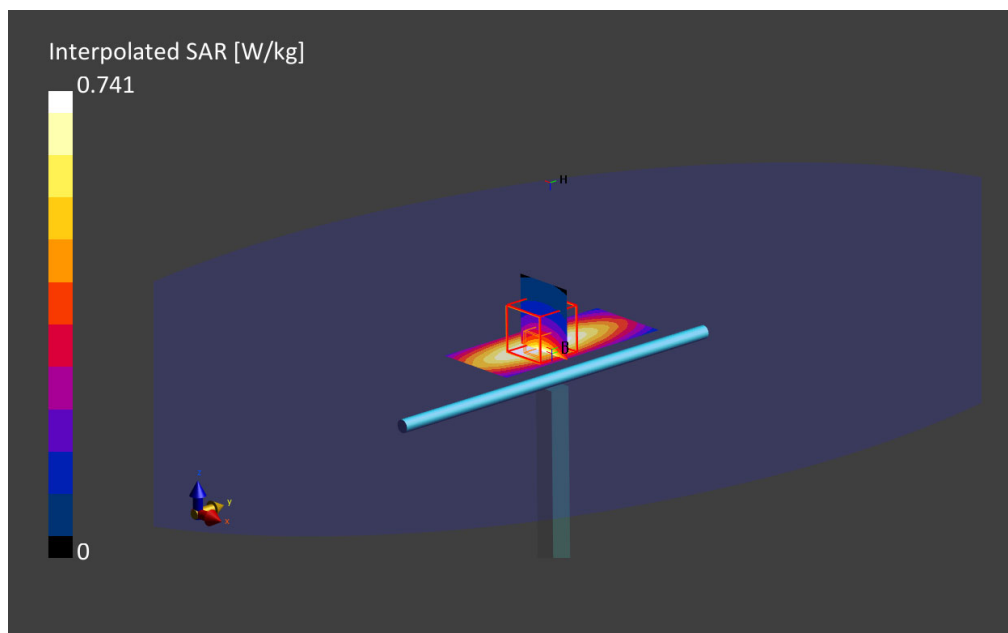
Phantom	TSL, Measured Date	Probe, Calibration Date	DAE, Calibration Date
ELI V8.0 (20deg probe tilt) - 2124	MABL-600-6000, 2022-Jun-13	EX3DV4 - SN7455, 2022-03-21	DAE4ip Sn1704, 2022-04-29

Scan Setup

	Area Scan	Zoom Scan
Grid Extents [mm]	40.0 x 90.0	30.0 x 30.0 x 30.0
Grid Steps [mm]	10.0 x 15.0	6.0 x 6.0 x 1.5
Sensor Surface [mm]	3.0	1.4
Graded Grid	Yes	Yes
Grading Ratio	1.5	1.5
MAIA	Confirmed by MAIA	Confirmed by MAIA
Surface Detection	VMS + 6p	VMS + 6p
Scan Method	Measured	Measured

Measurement Results

	Area Scan	Zoom Scan
Date	2022-06-13, 10:54	2022-06-13, 11:00
psSAR1g [W/Kg]	0.450	0.448
psSAR10g [W/Kg]	0.299	0.292
Power Drift [dB]	0.04	-0.02
Power Scaling	Disabled	Disabled
Scaling Factor [dB]		
TSL Correction	Positive Only	Positive Only
M2/M1 [%]		84.2
Dist 3dB Peak [mm]		22.9



32. System Check Body Liquid 835MHz – 2022-04-21 – System 2

Device under Test Properties

Name, Manufacturer	Dimensions [mm]	Serial Number	DUT Type
Dipole 835MHz, SPEAG	50.0 x 10.0 x 8.0	4d192	Validation Dipole

Exposure Conditions

Phantom Section, TSL	Position, Test Distance [mm]	Band	Group, UID	Frequency [MHz], Channel Number	Conversion Factor	TSL Conductivity [S/m]	TSL Permittivity
Flat, MSL	,		0--	835.0, 0	9.32	0.93	53.3

Hardware Setup

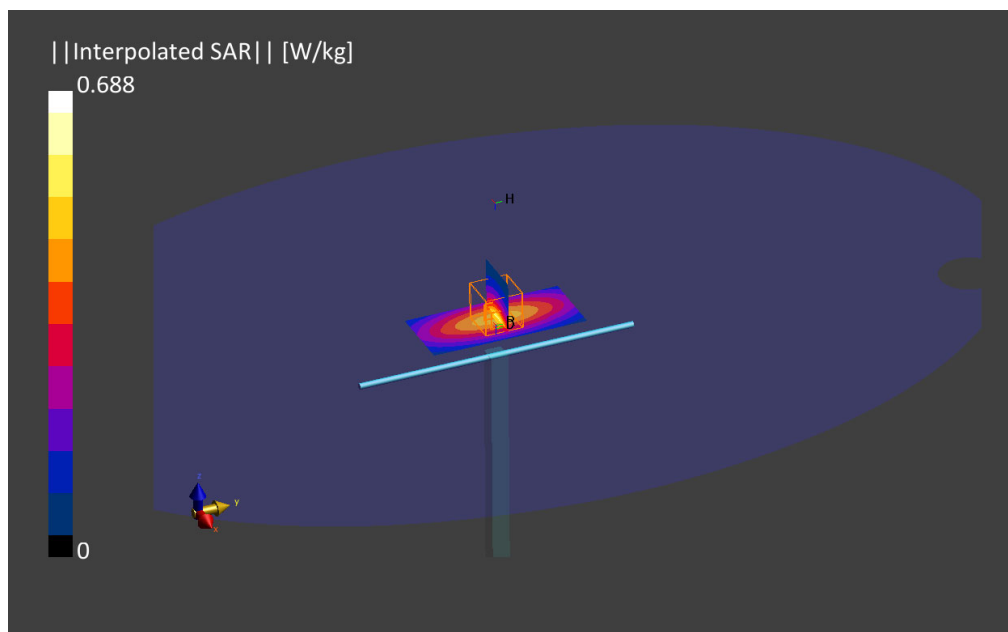
Phantom	TSL, Measured Date	Probe, Calibration Date	DAE, Calibration Date
ELI V8.0 (20deg probe tilt) -	MBBL-600-6000 , 2022-Apr-20	EX3DV4 - SN7604, 2021-08-16	DAE4 Sn1703, 2022-04-28

Scan Setup

	Area Scan	Zoom Scan
Grid Extents [mm]	40.0 x 90.0	30.0 x 30.0 x 30.0
Grid Steps [mm]	10.0 x 15.0	6.0 x 6.0 x 1.5
Sensor Surface [mm]	3.0	1.4
Graded Grid	Yes	Yes
Grading Ratio	1.5	1.5
MAIA	Confirmed by MAIA	Confirmed by MAIA
Surface Detection	VMS + 6p	VMS + 6p
Scan Method	Measured	Measured

Measurement Results

	Area Scan	Zoom Scan
Date	2022-04-21, 07:52	2022-04-21, 07:57
psSAR1g [W/kg]	0.506	0.519
psSAR10g [W/kg]	0.334	0.337
Power Drift [dB]	-0.03	-0.04
Power Scaling	Disabled	Disabled
Scaling Factor [dB]		
TSL Correction	Positive Only	Positive Only
M2/M1 [%]		86.1
Dist 3dB Peak [mm]		16.8



33. System Check Body Liquid 835MHz – 2022-05-31 – System 2

Device under Test Properties

Name, Manufacturer	Dimensions [mm]	Serial Number	DUT Type
Dipole 835MHz, SPEAG	50.0 x 10.0 x 8.0	4d192	Validation Dipole

Exposure Conditions

Phantom Section, TSL	Position, Test Distance [mm]	Band	Group, UID	Frequency [MHz], Channel Number	Conversion Factor	TSL Conductivity [S/m]	TSL Permittivity
Flat, MSL	,		0--	835.0, 0	9.79	0.97	55.4

Hardware Setup

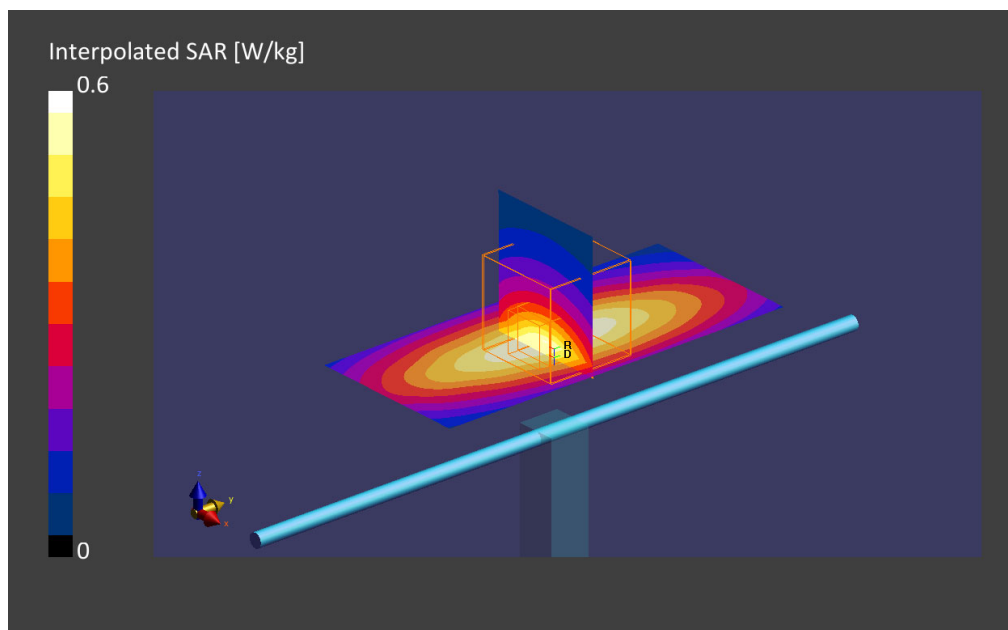
Phantom	TSL, Measured Date	Probe, Calibration Date	DAE, Calibration Date
ELI V8.0 (20deg probe tilt)	MBBL-600-6000 ,2022-May-30	EX3DV4 - SN7604, 2021-08-16	DAE4 Sn1703, 2022-04-28

Scan Setup

	Area Scan	Zoom Scan
Grid Extents [mm]	40.0 x 90.0	30.0 x 30.0 x 30.0
Grid Steps [mm]	10.0 x 15.0	6.0 x 6.0 x 1.5
Sensor Surface [mm]	3.0	1.4
Graded Grid	Yes	Yes
Grading Ratio	1.5	1.5
MAIA	Confirmed by MAIA	Confirmed by MAIA
Surface Detection	VMS + 6p	VMS + 6p
Scan Method	Measured	Measured

Measurement Results

	Area Scan	Zoom Scan
Date	2022-05-31, 15:54	2022-05-31, 16:00
psSAR1g [W/kg]	0.479	0.482
psSAR10g [W/kg]	0.314	0.318
Power Drift [dB]	0.01	0.01
Power Scaling	Disabled	Disabled
Scaling Factor [dB]		
TSL Correction	Positive Only	Positive Only
M2/M1 [%]		84.6
Dist 3dB Peak [mm]		15.6



34. System Check Body Liquid 835MHz – 2022-05-17 – System 4

Device under Test Properties

Name, Manufacturer	Dimensions [mm]	Serial Number	DUT Type
Dipole 835MHz, SPEAG	50.0 x 10.0 x 8.0	4d192	Validation Dipole

Exposure Conditions

Phantom Section, TSL	Position, Test Distance [mm]	Band	Group, UID	Frequency [MHz], Channel Number	Conversion Factor	TSL Conductivity [S/m]	TSL Permittivity
Flat, MSL	,		0--	835.0, 0	9.34	0.970	55.0

Hardware Setup

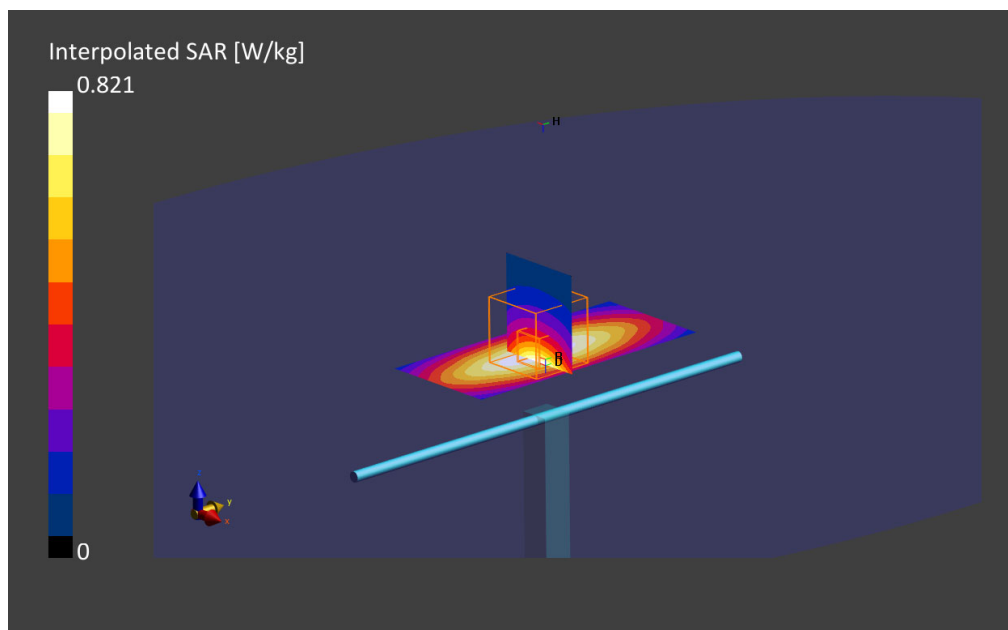
Phantom	TSL, Measured Date	Probe, Calibration Date	DAE, Calibration Date
ELI V8.0 (20deg probe tilt) - 2124	MBBL-600-6000, 2022-May-16	EX3DV4 - SN7455, 2022-03-21	DAE4 Sn1517, 2021-03-11

Scan Setup

	Area Scan	Zoom Scan
Grid Extents [mm]	40.0 x 90.0	30.0 x 30.0 x 30.0
Grid Steps [mm]	10.0 x 15.0	6.0 x 6.0 x 1.5
Sensor Surface [mm]	3.0	1.4
Graded Grid	Yes	Yes
Grading Ratio	1.5	1.5
MAIA	Confirmed by MAIA	Confirmed by MAIA
Surface Detection	VMS + 6p	VMS + 6p
Scan Method	Measured	Measured

Measurement Results

	Area Scan	Zoom Scan
Date	2022-05-17, 14:24	2022-05-17, 14:30
psSAR1g [W/Kg]	0.552	0.518
psSAR10g [W/Kg]	0.362	0.341
Power Drift [dB]	-0.08	-0.09
Power Scaling	Disabled	Disabled
Scaling Factor [dB]		
TSL Correction	Positive Only	Positive Only
M2/M1 [%]		87.4
Dist 3dB Peak [mm]		19.7



35. System Check Body Liquid 1750MHz – 2022-05-26 – System 2

Device under Test Properties

Name, Manufacturer	Dimensions [mm]	Serial Number	DUT Type
Dipole 1750MHz, SPEAG	50.0 x 10.0 x 8.0	1133	Validation Dipole

Exposure Conditions

Phantom Section, TSL	Position, Test Distance [mm]	Band	Group, UID	Frequency [MHz], Channel Number	Conversion Factor	TSL Conductivity [S/m]	TSL Permittivity
Flat, MSL	,		0--	1750.0, 0	8.37	1.39	51.5

Hardware Setup

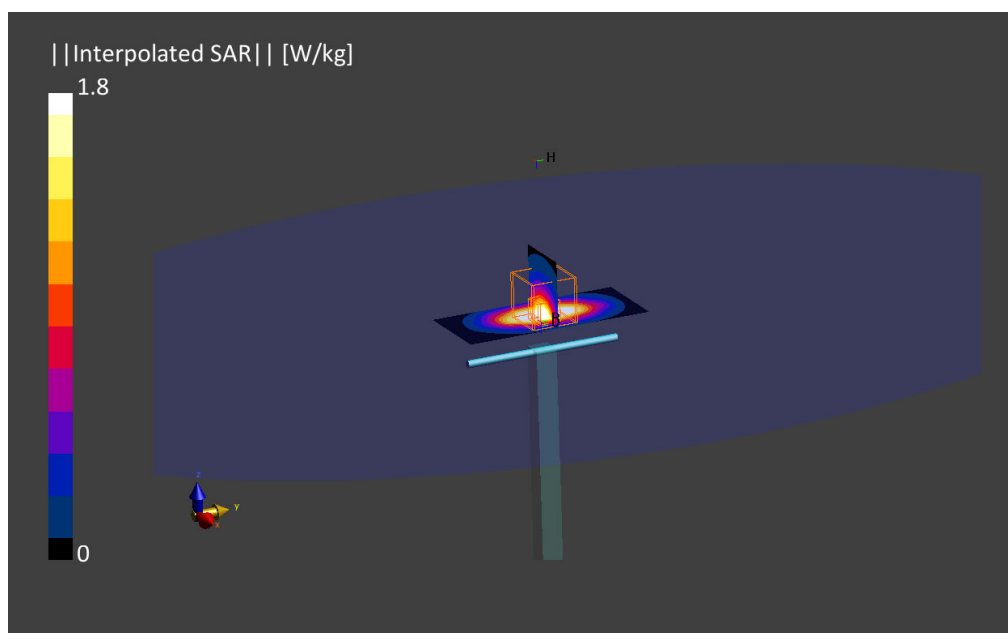
Phantom	TSL, Measured Date	Probe, Calibration Date	DAE, Calibration Date
ELI V8.0 (20deg probe tilt) -	MBBL-600-6000 22-Apr-25	EX3DV4 - SN7604, 2021-08-16	DAE4 Sn1703, 2022-04-28

Scan Setup

	Area Scan	Zoom Scan
Grid Extents [mm]	40.0 x 90.0	30.0 x 30.0 x 30.0
Grid Steps [mm]	10.0 x 15.0	6.0 x 6.0 x 1.5
Sensor Surface [mm]	3.0	1.4
Graded Grid	Yes	Yes
Grading Ratio	1.5	1.5
MAIA	Confirmed by MAIA	Confirmed by MAIA
Surface Detection	Yes	Yes
Scan Method	Measured	Measured

Measurement Results

	Area Scan	Zoom Scan
Date	2022-04-26, 10:48	2022-04-26, 10:53
psSAR1g [W/Kg]	1.77	1.77
psSAR10g [W/Kg]	0.943	0.951
Power Drift [dB]	0.00	-0.01
Power Scaling	Disabled	Disabled
Scaling Factor [dB]		
TSL Correction	Positive Only	Positive Only



36. System Check Body Liquid 1750MHz – 2022-12-05 – System 4

Device under Test Properties

Name, Manufacturer	Dimensions [mm]	Serial Number	DUT Type
Dipole 1750MHz, SPEAG	50.0 x 10.0 x 20.0	1133	Validation Dipole

Exposure Conditions

Phantom Section, TSL	Position, Test Distance [mm]	Band	Group, UID	Frequency [MHz], Channel Number	Conversion Factor	TSL Conductivity [S/m]	TSL Permittivity
Flat, MSL	,		, 0--	1750.0, 0	7.91	1.53	51.9

Hardware Setup

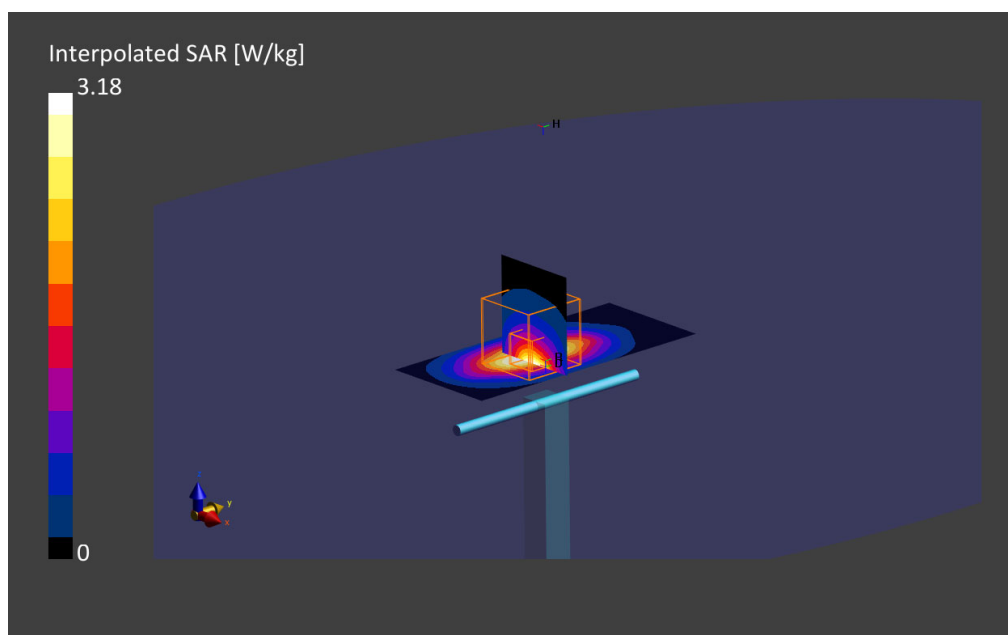
Phantom	TSL, Measured Date	Probe, Calibration Date	DAE, Calibration Date
ELI V8.0 (20deg probe tilt) - 2124	MABL-600-6000, 2022-May-09	EX3DV4 - SN7455, 2022-03-21	DAE4 Sn1517, 2021-03-11

Scan Setup

	Area Scan	Zoom Scan
Grid Extents [mm]	40.0 x 90.0	30.0 x 30.0 x 30.0
Grid Steps [mm]	10.0 x 15.0	6.0 x 6.0 x 1.5
Sensor Surface [mm]	3.0	1.4
Graded Grid	Yes	Yes
Grading Ratio	1.5	1.5
MAIA	Confirmed by MAIA	Confirmed by MAIA
Surface Detection	VMS + 6p	VMS + 6p
Scan Method	Measured	Measured

Measurement Results

	Area Scan	Zoom Scan
Date	2022-05-12, 14:16	2022-05-12, 14:22
psSAR1g [W/Kg]	1.93	1.74
psSAR10g [W/Kg]	1.02	0.939
Power Drift [dB]	0.01	-0.02
Power Scaling	Disabled	Disabled
Scaling Factor [dB]		
TSL Correction	Positive Only	Positive Only
M2/M1 [%]		83.6
Dist 3dB Peak [mm]		9.1



37. System Check Body Liquid 1900MHz – 2022-04-22 – System 2

Device under Test Properties

Name, Manufacturer	Dimensions [mm]	S/N	DUT Type
Dipole 1900MHz, SPEAG	50.0 x 10.0 x 8.0	5d197	Validation Dipole

Exposure Conditions

Phantom Section, TSL	Position, Test Distance [mm]	Band	Group, UID	Frequency [MHz], Channel Number	Conversion Factor	TSL Conductivity [S/m]	TSL Permittivity
Flat, MSL	,	,	0--	1900.0, 0	7.98	1.49	52.2

Hardware Setup

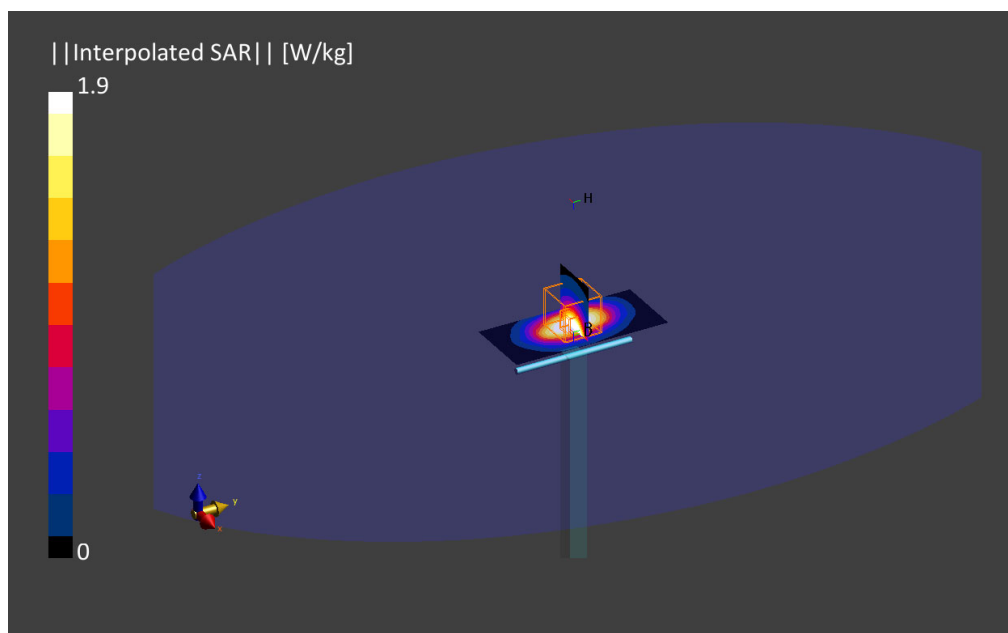
Phantom	TSL, Measured Date	Probe, Calibration Date	DAE, Calibration Date
ELI V8.0 (20deg probe tilt)	MABL-600-6000 , 2022-Apr-20	EX3DV4 - SN7604, 2021-08-16	DAE4 Sn1703, 2022-04-28

Scan Setup

	Area Scan	Zoom Scan
Grid Extents [mm]	40.0 x 90.0	30.0 x 30.0 x 30.0
Grid Steps [mm]	10.0 x 15.0	6.0 x 6.0 x 1.5
Sensor Surface [mm]	3.0	1.4
Graded Grid	Yes	Yes
Grading Ratio	1.5	1.5
MAIA	Confirmed by MAIA	Confirmed by MAIA
Surface Detection	VMS + 6p	VMS + 6p
Scan Method	Measured	Measured

Measurement Results

	Area Scan	Zoom Scan
Date	2022-04-22, 15:57	2022-04-22, 16:02
psSAR1g [W/kg]	1.78	1.84
psSAR10g [W/kg]	0.937	0.962
Power Drift [dB]	0.01	-0.03
Power Scaling	Disabled	Disabled
Scaling Factor [dB]		
TSL Correction	Positive Only	Positive Only
M2/M1 [%]		83.7
Dist 3dB Peak [mm]		9.6



38. System Check Body Liquid 1900MHz – 2022-04-28 – System 2

Device under Test Properties

Name, Manufacturer	Dimensions [mm]	S/N	DUT Type
Dipole 1900MHz, SPEAG	50.0 x 10.0 x 8.0	5d197	Validation Dipole

Exposure Conditions

Phantom Section, TSL	Position, Test Distance [mm]	Band	Group, UID	Frequency [MHz], Channel Number	Conversion Factor	TSL Conductivity [S/m]	TSL Permittivity
Flat, MSL	,	,	0--	1900.0, 0	7.98	1.48	51.4

Hardware Setup

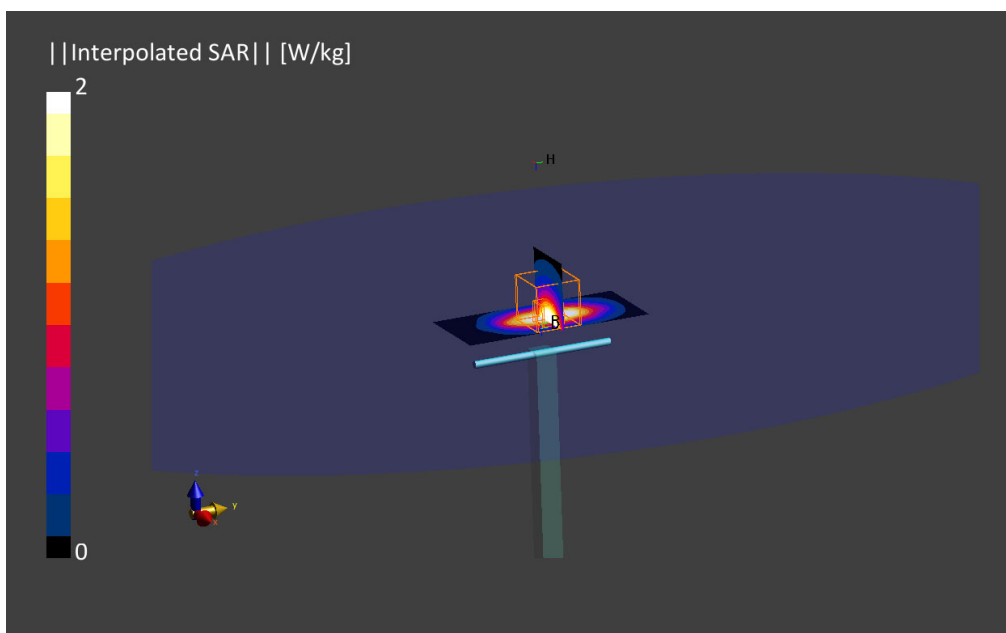
Phantom	TSL, Measured Date	Probe, Calibration Date	DAE, Calibration Date
ELI V8.0 (20deg probe tilt)	MABL-600-6000 , 2022-Apr-25	EX3DV4 - SN7604, 2021-08-16	DAE4 Sn1703, 2022-04-28

Scan Setup

	Area Scan	Zoom Scan
Grid Extents [mm]	40.0 x 90.0	30.0 x 30.0 x 30.0
Grid Steps [mm]	10.0 x 15.0	6.0 x 6.0 x 1.5
Sensor Surface [mm]	3.0	1.4
Graded Grid	Yes	Yes
Grading Ratio	1.5	1.5
MAIA	Confirmed by MAIA	Confirmed by MAIA
Surface Detection	VMS + 6p	VMS + 6p
Scan Method	Measured	Measured

Measurement Results

	Area Scan	Zoom Scan
Date	2022-04-27, 10:16	2022-04-27, 10:21
psSAR1g [W/kg]	1.84	1.94
psSAR10g [W/kg]	0.938	1.01
Power Drift [dB]	-0.01	-0.08
Power Scaling	Disabled	Disabled
Scaling Factor [dB]		
TSL Correction	Positive Only	Positive Only
M2/M1 [%]		84.7
Dist 3dB Peak [mm]		9.6



39. System Check Body Liquid 1900MHz – 2022-17-05 – System 4

Device under Test Properties

Name, Manufacturer	Dimensions [mm]	Serial Number	DUT Type
Dipole 1900MHZ, SPEAG	50.0 x 10.0 x 20.0	5d197	Validation Dipole

Exposure Conditions

Phantom Section, TSL	Position, Test Distance [mm]	Band	Group, UID	Frequency [MHz], Channel Number	Conversion Factor	TSL Conductivity [S/m]	TSL Permittivity
Flat, MSL	,		, 0--	1900.0, 0	7.59	1.54	53.5

Hardware Setup

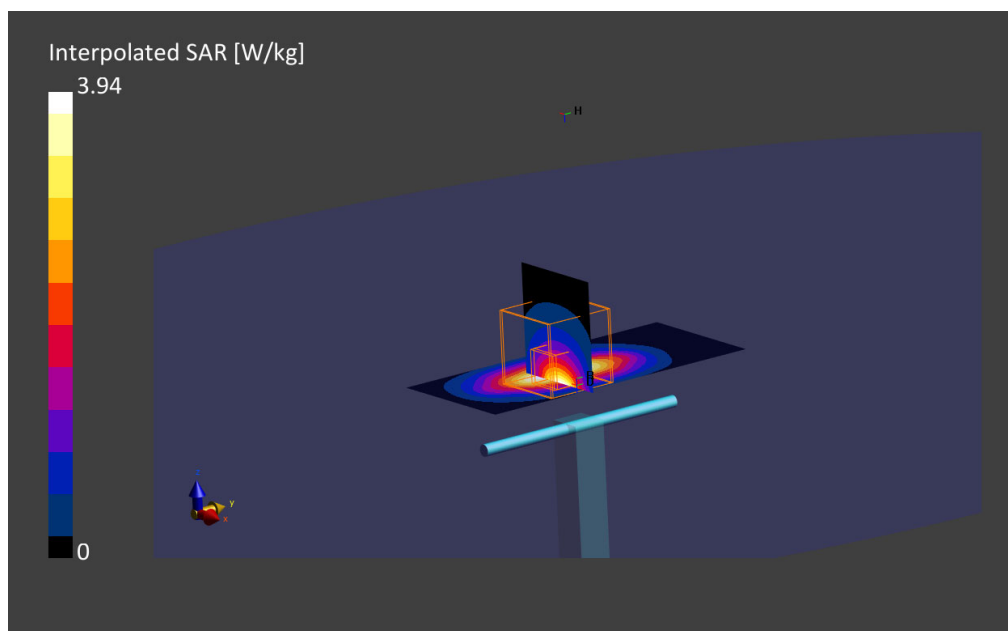
Phantom	TSL, Measured Date	Probe, Calibration Date	DAE, Calibration Date
ELI V8.0 (20deg probe tilt) - 2124	MABL-600-6000, 2022-May-16	EX3DV4 - SN7455, 2022-03-21	DAE4 Sn1517, 2021-03-11

Scan Setup

	Area Scan	Zoom Scan
Grid Extents [mm]	40.0 x 90.0	30.0 x 30.0 x 30.0
Grid Steps [mm]	10.0 x 15.0	6.0 x 6.0 x 1.5
Sensor Surface [mm]	3.0	1.4
Graded Grid	Yes	Yes
Grading Ratio	1.5	1.5
MAIA	Confirmed by MAIA	Confirmed by MAIA
Surface Detection	VMS + 6p	VMS + 6p
Scan Method	Measured	Measured

Measurement Results

	Area Scan	Zoom Scan
Date	2022-05-17, 14:36	2022-05-17, 14:42
psSAR1g [W/Kg]	2.09	2.14
psSAR10g [W/Kg]	1.07	1.12
Power Drift [dB]	-0.02	0.00
Power Scaling	Disabled	Disabled
Scaling Factor [dB]		
TSL Correction	Positive Only	Positive Only
M2/M1 [%]		82.1
Dist 3dB Peak [mm]		9.6



40. System Check Body Liquid 1900MHz – 2022-19-05 – System 4

Device under Test Properties

Name, Manufacturer	Dimensions [mm]	Serial Number	DUT Type
Dipole 1900MHz, SPEAG	50.0 x 10.0 x 20.0	5d197	Validation Dipole

Exposure Conditions

Phantom Section, TSL	Position, Test Distance [mm]	Band	Group, UID	Frequency [MHz], Channel Number	Conversion Factor	TSL Conductivity [S/m]	TSL Permittivity
Flat, MSL	,	,	0--	1900.0, 0	7.59	1.56	53.7

Hardware Setup

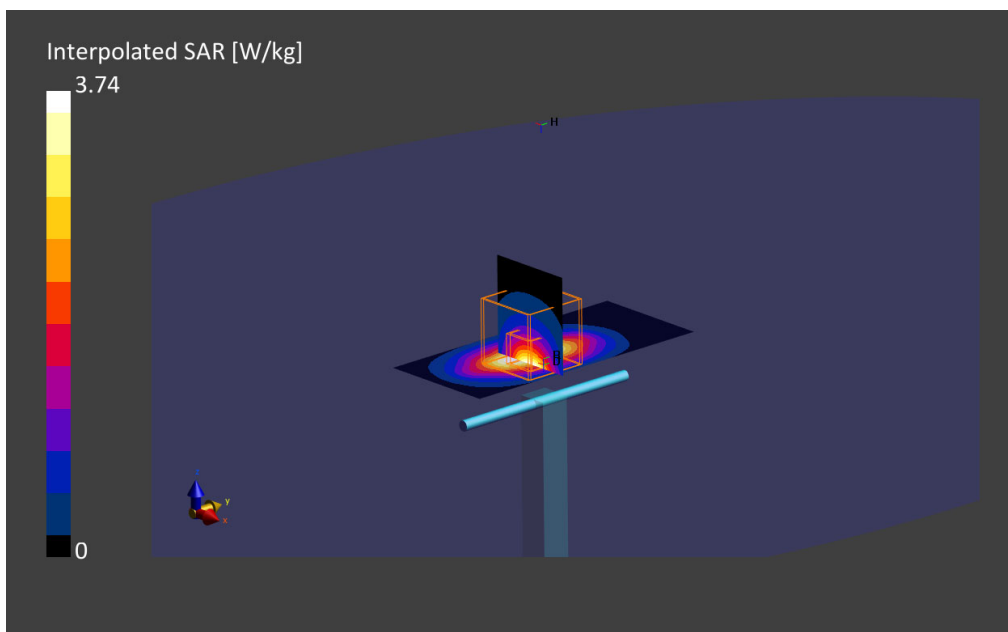
Phantom	TSL, Measured Date	Probe, Calibration Date	DAE, Calibration Date
ELI V8.0 (20deg probe tilt) - 2124	MBBL-600-6000, 2022-May-19	EX3DV4 - SN7455, 2022-03-21	DAE4 Sn1517, 2021-03-11

Scan Setup

	Area Scan	Zoom Scan
Grid Extents [mm]	40.0 x 90.0	30.0 x 30.0 x 30.0
Grid Steps [mm]	10.0 x 15.0	6.0 x 6.0 x 1.5
Sensor Surface [mm]	3.0	1.4
Graded Grid	Yes	Yes
Grading Ratio	1.5	1.5
MAIA	Confirmed by MAIA	Confirmed by MAIA
Surface Detection	VMS + 6p	VMS + 6p
Scan Method	Measured	Measured

Measurement Results

	Area Scan	Zoom Scan
Date	2022-05-19, 16:04	2022-05-19, 16:10
psSAR1g [W/Kg]	1.96	1.99
psSAR10g [W/Kg]	1.00	1.04
Power Drift [dB]	-0.01	-0.09
Power Scaling	Disabled	Disabled
Scaling Factor [dB]		
TSL Correction	Positive Only	Positive Only
M2/M1 [%]		84.1
Dist 3dB Peak [mm]		9.6



41. System Check Body Liquid 2300MHz – System 2

Device under Test Properties

Name, Manufacturer	Dimensions [mm]	Serial Number	DUT Type
D2300MHz, SPEAG	50.0 x 10.0 x 8.0	1046	Validation Dipole

Exposure Conditions

Phantom Section, TSL	Position, Test Distance [mm]	Band	Group, UID	Frequency [MHz], Channel Number	Conversion Factor	TSL Conductivity [S/m]	TSL Permittivity
Flat, MSL	,	,	0--	2300.0, 0	7.45	1.79	51.7

Hardware Setup

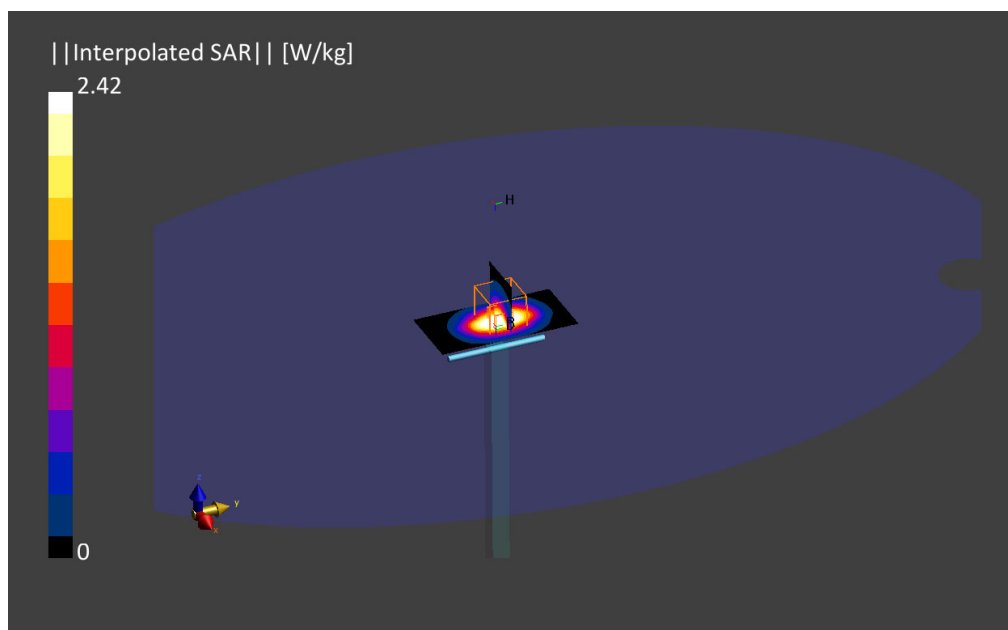
Phantom	TSL, Measured Date	Probe, Calibration Date	DAE, Calibration Date
ELI V8.0 (20deg probe tilt) -	MBBL-600-6000 , 2022-Apr-20	EX3DV4 - SN7604, 2021-08-16	DAE4 Sn1703, 2022-04-28

Scan Setup

	Area Scan	Zoom Scan
Grid Extents [mm]	40.0 x 80.0	30.0 x 30.0 x 30.0
Grid Steps [mm]	10.0 x 10.0	5.0 x 5.0 x 1.5
Sensor Surface [mm]	3.0	1.4
Graded Grid	Yes	Yes
Grading Ratio	1.5	1.5
MAIA	Confirmed by MAIA	Confirmed by MAIA
Surface Detection	VMS + 6p	VMS + 6p
Scan Method	Measured	Measured

Measurement Results

	Area Scan	Zoom Scan
Date	2022-04-21, 08:39	2022-04-21, 08:45
psSAR1g [W/kg]	2.39	2.41
psSAR10g [W/kg]	1.12	1.15
Power Drift [dB]	0.03	-0.08
Power Scaling	Disabled	Disabled
Scaling Factor		
TSL Correction	Positive Only	Positive Only
M2/M1 [%]		82.7
Dist 3dB Peak [mm]		9.0



42. System Check Body Liquid 2300MHz – 2022-17-05 – System 4

Device under Test Properties

Name, Manufacturer	Dimensions [mm]	Serial Number	DUT Type
D2300MHZ, SPEAG	50.0 x 10.0 x 8.0	1046	Validation Dipole

Exposure Conditions

Phantom Section, TSL	Position, Test Distance [mm]	Band	Group, UID	Frequency [MHz], Channel Number	Conversion Factor	TSL Conductivity [S/m]	TSL Permittivity
Flat, MSL	,	,	0--	2300.0, 0	7.51	1.84	53.0

Hardware Setup

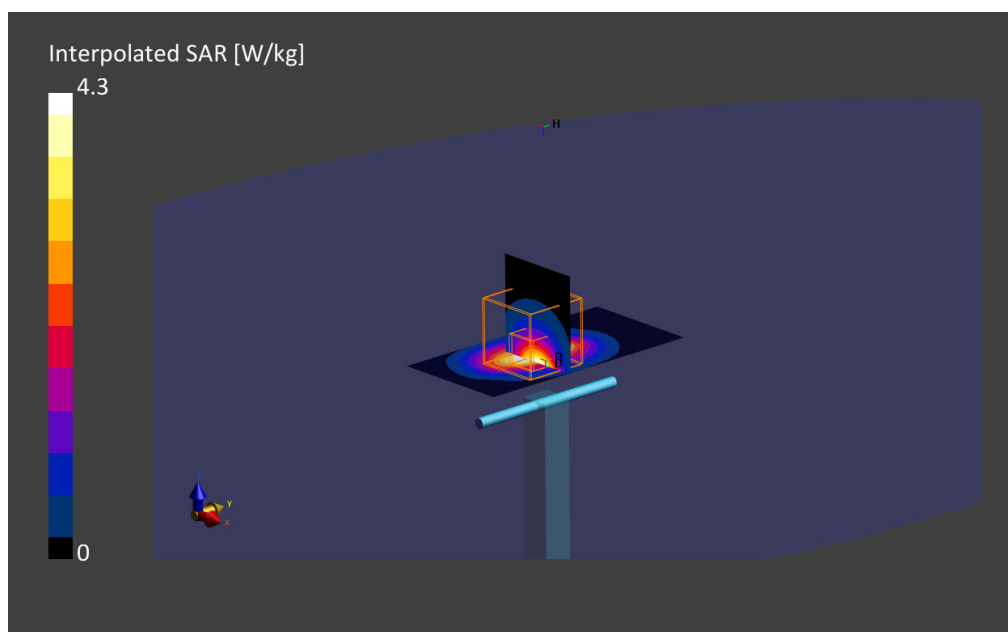
Phantom	TSL, Measured Date	Probe, Calibration Date	DAE, Calibration Date
ELI V8.0 (20deg probe tilt) - 2124	MABL-600-6000, 2022-May-16	EX3DV4 - SN7455, 2022-03-21	DAE4 Sn1517, 2021-03-11

Scan Setup

	Area Scan	Zoom Scan
Grid Extents [mm]	40.0 x 80.0	30.0 x 30.0 x 30.0
Grid Steps [mm]	10.0 x 10.0	5.0 x 5.0 x 1.5
Sensor Surface [mm]	3.0	1.4
Graded Grid	Yes	Yes
Grading Ratio	1.5	1.5
MAIA	Confirmed by MAIA	Confirmed by MAIA
Surface Detection	VMS + 6p	VMS + 6p
Scan Method	Measured	Measured

Measurement Results

	Area Scan	Zoom Scan
Date	2022-05-17, 14:50	2022-05-17, 14:57
psSAR1g [W/Kg]	2.09	2.20
psSAR10g [W/Kg]	0.978	1.06
Power Drift [dB]	0.01	0.06
Power Scaling	Disabled	Disabled
Scaling Factor [dB]		
TSL Correction	Positive Only	Positive Only
M2/M1 [%]		82.7
Dist 3dB Peak [mm]		8.9



43. System Check Body Liquid 2600MHz – 2022-04-21 – System 2

Device under Test Properties

Name, Manufacturer	Dimensions [mm]	Serial Number	DUT Type
D2600MHz, SPEAG	50.0 x 10.0 x 8.0	1100	Validation Dipole

Exposure Conditions

Phantom Section, TSL	Position, Test Distance [mm]	Band	Group, UID	Frequency [MHz], Channel Number	Conversion Factor	TSL Conductivity [S/m]	TSL Permittivity
Flat, MSL	,	,	0--	2600.0, 0	7.24	2.06	51.2

Hardware Setup

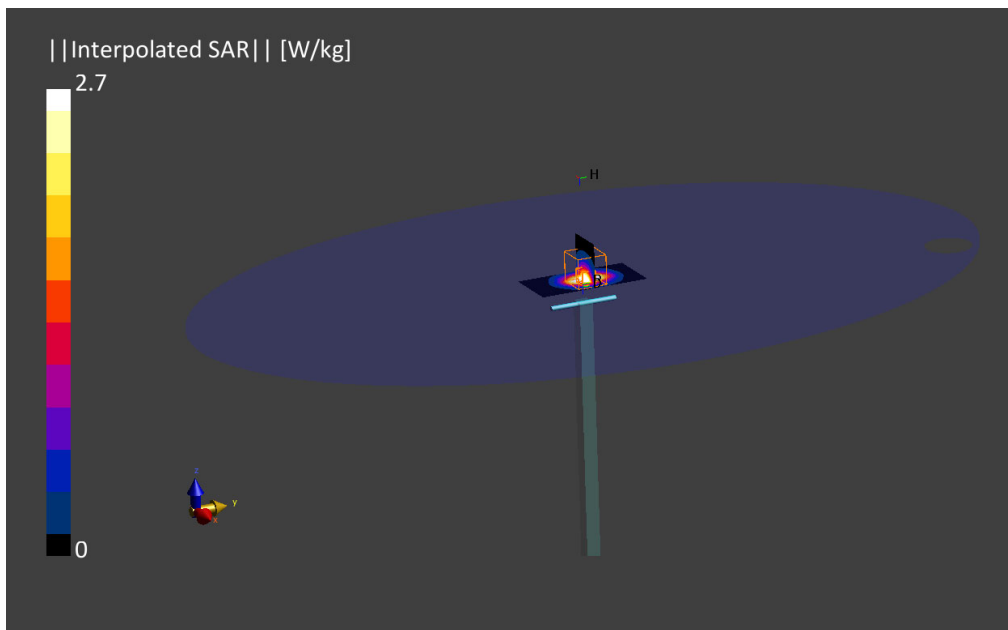
Phantom	TSL, Measured Date	Probe, Calibration Date	DAE, Calibration Date
ELI V8.0 (20deg probe tilt)	MBBL-600-6000, 2022-Apr-20	EX3DV4 - SN7604, 2021-08-16	DAE4 Sn1703, 2022-04-28

Scan Setup

	Area Scan	Zoom Scan
Grid Extents [mm]	40.0 x 80.0	30.0 x 30.0 x 30.0
Grid Steps [mm]	10.0 x 10.0	5.0 x 5.0 x 1.5
Sensor Surface [mm]	3.0	1.4
Graded Grid	Yes	Yes
Grading Ratio	1.5	1.5
MAIA	Confirmed by MAIA	Confirmed by MAIA
Surface Detection	VMS + 6p	VMS + 6p
Scan Method	Measured	Measured

Measurement Results

	Area Scan	Zoom Scan
Date	2022-04-21, 08:27	2022-04-21, 08:33
psSAR1g [W/kg]	2.58	2.63
psSAR10g [W/kg]	1.14	1.17
Power Drift [dB]	-0.02	-0.09
Power Scaling	Disabled	Disabled
Scaling Factor		
TSL Correction	Positive Only	Positive Only
M2/M1 [%]		81.0
Dist 3dB Peak [mm]		8.2



44. System Check Body Liquid 2600MHz – 2022-06-01 – System 2

Device under Test Properties

Name, Manufacturer	Dimensions [mm]	Serial Number	DUT Type
D2600MHz, SPEAG	50.0 x 10.0 x 8.0	1100	Validation Dipole

Exposure Conditions

Phantom Section, TSL	Position, Test Distance [mm]	Band	Group, UID	Frequency [MHz], Channel Number	Conversion Factor	TSL Conductivity [S/m]	TSL Permittivity
Flat, MSL	,		, 0--	2600.0, 0	7.3	2.09	50.2

Hardware Setup

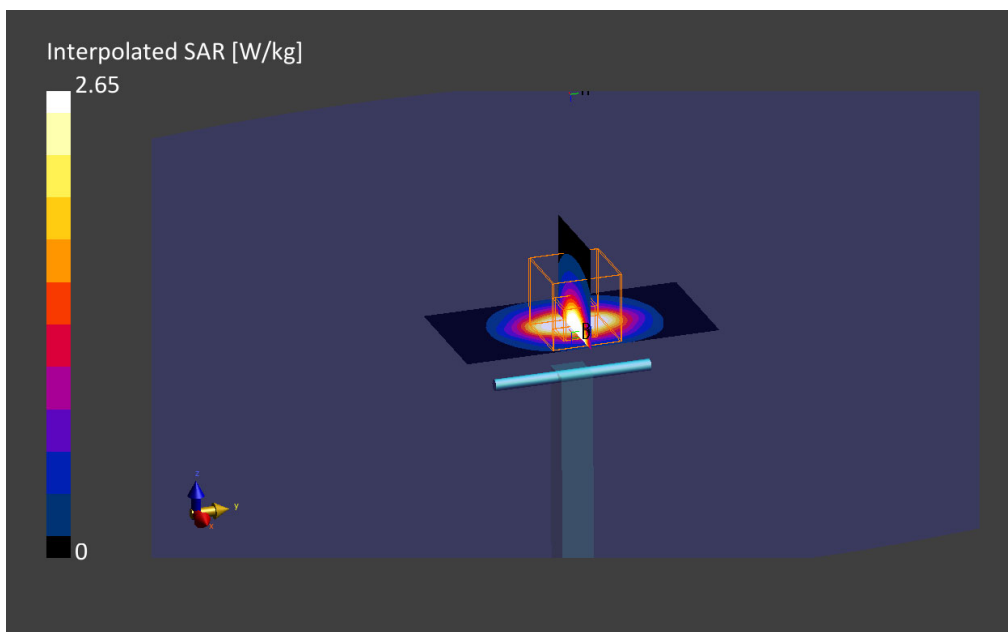
Phantom	TSL, Measured Date	Probe, Calibration Date	DAE, Calibration Date
ELI V8.0 (20deg probe tilt)	MABL-600-6000, 2022-May-04	EX3DV4 - SN7604, 2021-08-16	DAE4 Sn1703, 2022-04-28

Scan Setup

	Area Scan	Zoom Scan
Grid Extents [mm]	40.0 x 80.0	30.0 x 30.0 x 30.0
Grid Steps [mm]	10.0 x 10.0	5.0 x 5.0 x 1.5
Sensor Surface [mm]	3.0	1.4
Graded Grid	Yes	Yes
Grading Ratio	1.5	1.5
MAIA	Confirmed by MAIA	Confirmed by MAIA
Surface Detection	VMS + 6p	VMS + 6p
Scan Method	Measured	Measured

Measurement Results

	Area Scan	Zoom Scan
Date	2022-06-01, 13:20	2022-06-01, 13:27
psSAR1g [W/Kg]	2.53	2.65
psSAR10g [W/Kg]	1.10	1.19
Power Drift [dB]	0.02	0.05
Power Scaling	Disabled	Disabled
Scaling Factor [dB]		
TSL Correction	Positive Only	Positive Only
M2/M1 [%]		82.7
Dist 3dB Peak [mm]		8.0



45. System Check Body Liquid 2600MHz – 2022-17-05 – System 4

Device under Test Properties

Name, Manufacturer	Dimensions [mm]	Serial Number	DUT Type
D2600MHz, SPEAG	50.0 x 10.0 x 8.0	1100	Validation Dipole

Exposu Exposure Conditions

Phantom Section, TSL	Position, Test Distance [mm]	Band	Group, UID	Frequency [MHz], Channel Number	Conversion Factor	TSL Conductivity [S/m]	TSL Permittivity
Flat, MSL	,	,	0--	2600.0, 0	7.3	2.12	52.5

Hardware Setup

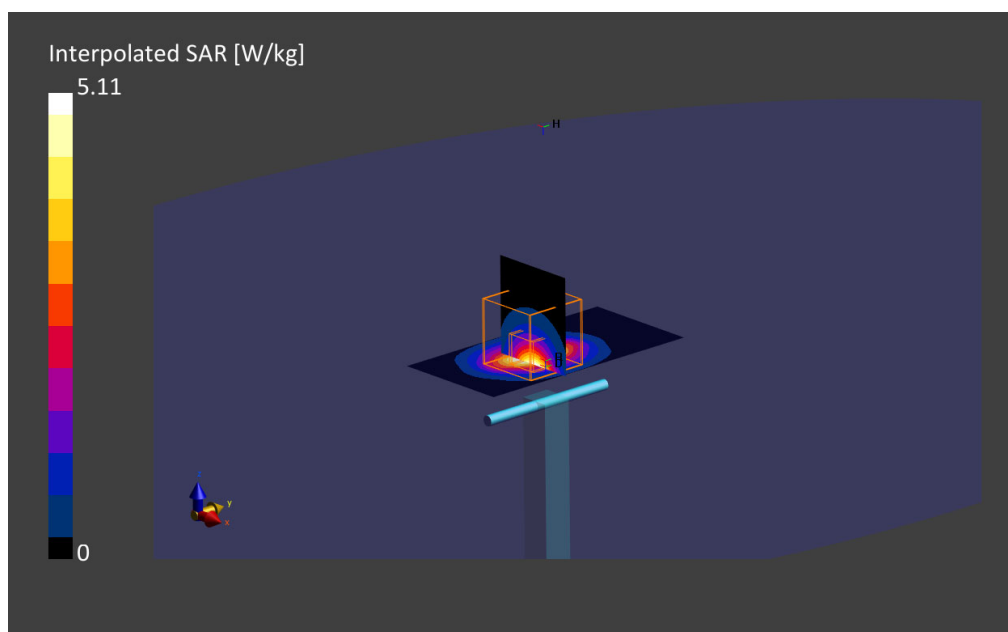
Phantom	TSL, Measured Date	Probe, Calibration Date	DAE, Calibration Date
ELI V8.0 (20deg probe tilt) - 2124	MABL-600-6000, 2022-May-16	EX3DV4 - SN7455, 2022-03-21	DAE4 Sn1517, 2021-03-11

Scan Setup

	Area Scan	Zoom Scan
Grid Extents [mm]	40.0 x 80.0	30.0 x 30.0 x 30.0
Grid Steps [mm]	10.0 x 10.0	5.0 x 5.0 x 1.5
Sensor Surface [mm]	3.0	1.4
Graded Grid	Yes	Yes
Grading Ratio	1.5	1.5
MAIA	Confirmed by MAIA	Confirmed by MAIA
Surface Detection	VMS + 6p	VMS + 6p
Scan Method	Measured	Measured

Measurement Results

	Area Scan	Zoom Scan
Date	2022-05-17, 15:31	2022-05-17, 15:39
psSAR1g [W/Kg]	2.44	2.48
psSAR10g [W/Kg]	1.08	1.12
Power Drift [dB]	-0.02	0.15
Power Scaling	Disabled	Disabled
Scaling Factor [dB]		
TSL Correction	Positive Only	Positive Only
M2/M1 [%]		81.5
Dist 3dB Peak [mm]		8.9



46. System Check Body Liquid 2600MHz – 2022-19-05 – System 4

Device under Test Properties

Name, Manufacturer	Dimensions [mm]	Serial Number	DUT Type
Dipole 2600MHz, SPEAG	50.0 x 10.0 x 20.0	1100	Validation Dipole

Exposure Conditions

Phantom Section, TSL	Position, Test Distance [mm]	Band	Group, UID	Frequency [MHz], Channel Number	Conversion Factor	TSL Conductivity [S/m]	TSL Permittivity
Flat, MSL	,		, 0--	2600.0, 0	7.3	2.15	52.8

Hardware Setup

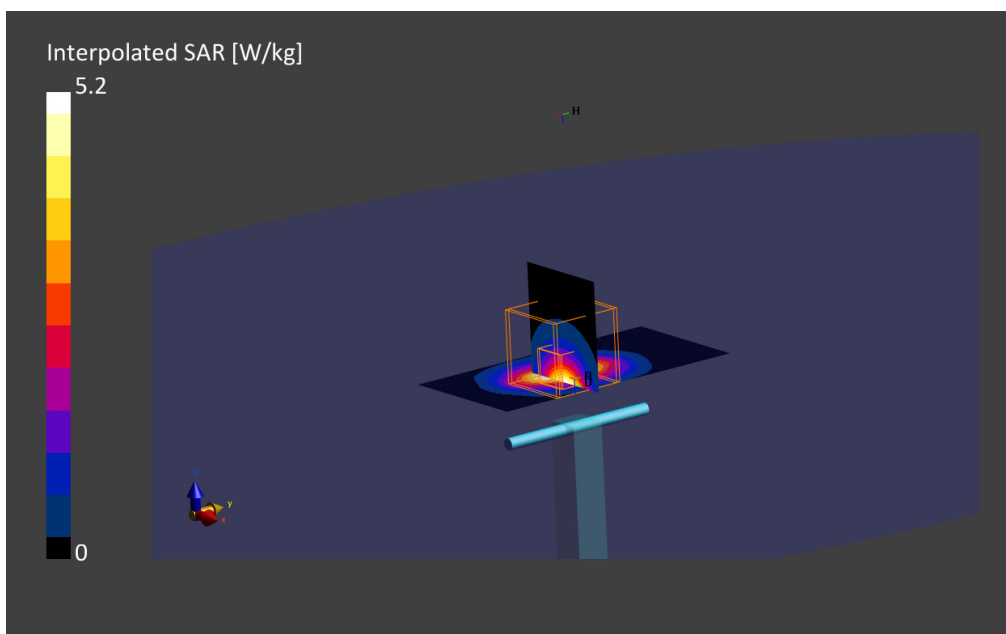
Phantom	TSL, Measured Date	Probe, Calibration Date	DAE, Calibration Date
ELI V8.0 (20deg probe tilt) - 2124	MBBL-600-6000, 2022-May-19	EX3DV4 - SN7455, 2022-03-21	DAE4 Sn1517, 2021-03-11

Scan Setup

	Area Scan	Zoom Scan
Grid Extents [mm]	40.0 x 80.0	30.0 x 30.0 x 30.0
Grid Steps [mm]	10.0 x 10.0	5.0 x 5.0 x 1.5
Sensor Surface [mm]	3.0	1.4
Graded Grid	Yes	Yes
Grading Ratio	1.5	1.5
MAIA	Confirmed by MAIA	Confirmed by MAIA
Surface Detection	VMS + 6p	VMS + 6p
Scan Method	Measured	Measured

Measurement Results

	Area Scan	Zoom Scan
Date	2022-05-19, 15:28	2022-05-19, 15:35
psSAR1g [W/Kg]	2.45	2.52
psSAR10g [W/Kg]	1.08	1.14
Power Drift [dB]	-0.00	0.00
Power Scaling	Disabled	Disabled
Scaling Factor [dB]		
TSL Correction	Positive Only	Positive Only
M2/M1 [%]		81.6
Dist 3dB Peak [mm]		8.9



47. System Check Body Liquid 3700MHz – 2022-06-14 - System2

Device under Test Properties

Name, Manufacturer	Dimensions [mm]	Serial Number	DUT Type
Dipole 3700MHz, SPEAG	50.0 x 10.0 x 17.0	1093	Validation Dipole

Exposure Conditions

Phantom Section, TSL	Position, Test Distance [mm]	Band	Group, UID	Frequency [MHz], Channel Number	Conversion Factor	TSL Conductivity [S/m]	TSL Permittivity
Flat, MSL	,		0--	3700.0, 0	6.07	3.24	51.0

Hardware Setup

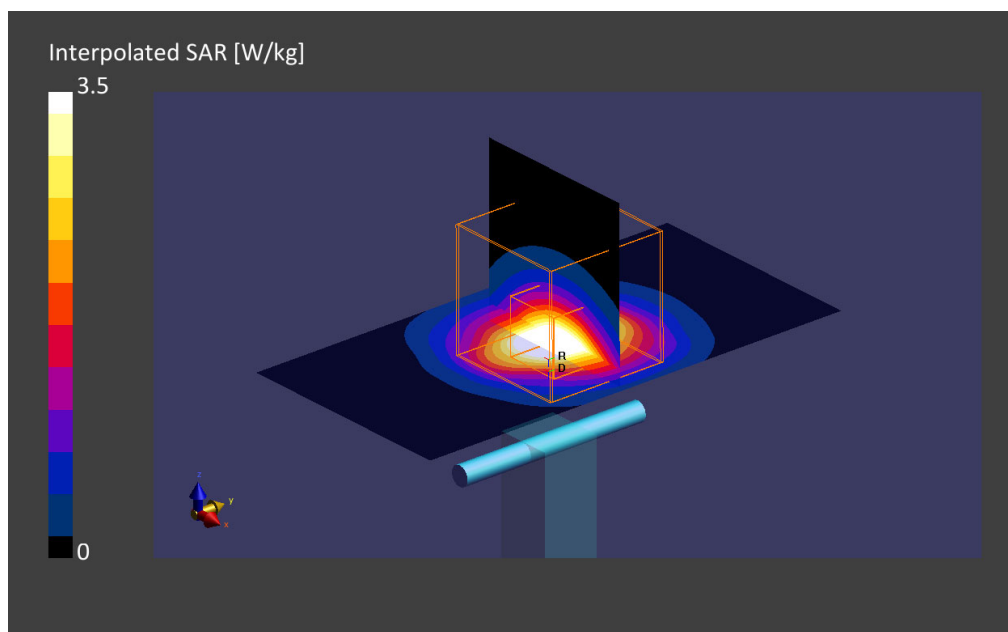
Phantom	TSL, Measured Date	Probe, Calibration Date	DAE, Calibration Date
ELI V8.0 (20deg probe tilt) -	MBBL-600-6000, 2022-Jun-14	EX3DV4 - SN7455, 2022-03-21	DAE4 Sn1703, 2022-04-28

Scan Setup

	Area Scan	Zoom Scan
Grid Extents [mm]	40.0 x 80.0	28.0 x 28.0 x 28.0
Grid Steps [mm]	10.0 x 10.0	5.0 x 5.0 x 1.4
Sensor Surface [mm]	3.0	1.4
Graded Grid	Yes	Yes
Grading Ratio	1.5	1.5
MAIA	Confirmed by MAIA	Confirmed by MAIA
Surface Detection	VMS + 6p	VMS + 6p
Scan Method	Measured	Measured

Measurement Results

	Area Scan	Zoom Scan
Date	2022-06-14, 11:18	2022-06-14, 11:25
psSAR1g [W/kg]	3.07	2.98
psSAR10g [W/kg]	1.14	1.14
Power Drift [dB]	-0.01	-0.02
Power Scaling	Disabled	Disabled
Scaling Factor [dB]		
TSL Correction	Positive Only	Positive Only
M2/M1 [%]		76.6
Dist 3dB Peak [mm]		8.5



48. System Check Body Liquid 3700MHz – 2022-17-05 – System 4

Device under Test Properties

Name, Manufacturer	Dimensions [mm]	Serial Number	DUT Type
Dipole 3700MHz, SPEAG	50.0 x 10.0 x 20.0	1093	Validation Dipole

Exposure Conditions

Phantom Section, TSL	Position, Test Distance [mm]	Band	Group, UID	Frequency [MHz], Channel Number	Conversion Factor	TSL Conductivity [S/m]	TSL Permittivity
Flat, MSL	,	,	0--	3700.0, 0	6.13	3.25	50.6

Hardware Setup

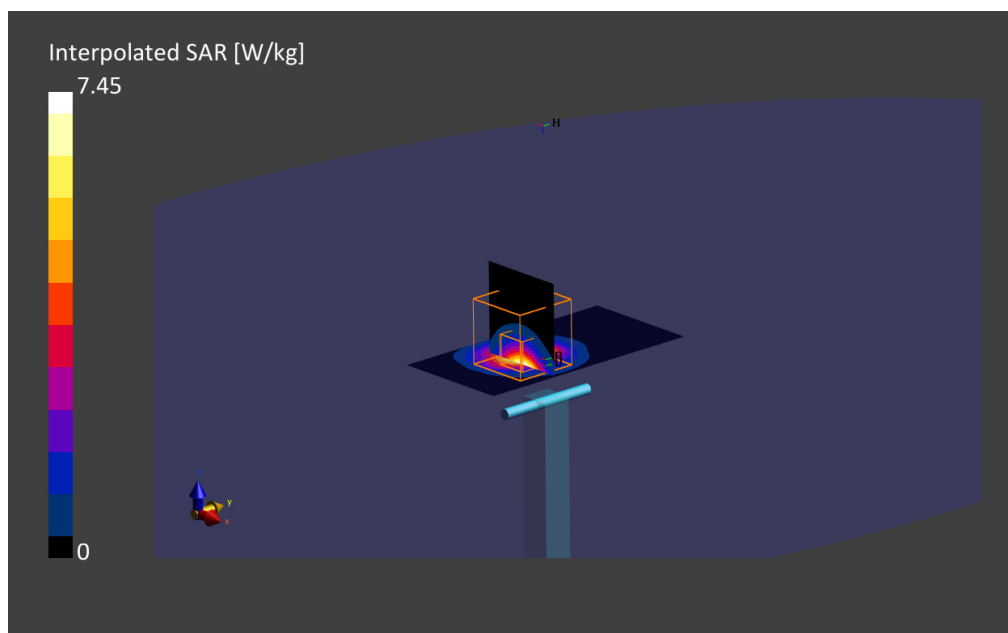
Phantom	TSL, Measured Date	Probe, Calibration Date	DAE, Calibration Date
ELI V8.0 (20deg probe tilt) - 2124	MABL-600-6000, 2022-May-16	EX3DV4 - SN7455, 2022-03-21	DAE4 Sn1517, 2021-03-11

Scan Setup

	Area Scan	Zoom Scan
Grid Extents [mm]	40.0 x 80.0	28.0 x 28.0 x 28.0
Grid Steps [mm]	10.0 x 10.0	5.0 x 5.0 x 1.4
Sensor Surface [mm]	3.0	1.4
Graded Grid	Yes	Yes
Grading Ratio	1.5	1.5
MAIA	Confirmed by MAIA	Confirmed by MAIA
Surface Detection	VMS + 6p	VMS + 6p
Scan Method	Measured	Measured

Measurement Results

	Area Scan	Zoom Scan
Date	2022-05-17, 15:03	2022-05-17, 15:11
psSAR1g [W/Kg]	2.81	2.90
psSAR10g [W/Kg]	1.05	1.09
Power Drift [dB]	0.09	-0.05
Power Scaling	Disabled	Disabled
Scaling Factor [dB]		
TSL Correction	Positive Only	Positive Only
M2/M1 [%]		76.3
Dist 3dB Peak [mm]		8.0



49. System Check Body Liquid 3700MHz – 2022-19-05 – System 4

Device under Test Properties

Name, Manufacturer	Dimensions [mm]	Serial Number	DUT Type
Dipole 3700MHz, SPEAG	50.0 x 10.0 x 20.0	1093	Validation Dipole

Exposure Conditions

Phantom Section, TSL	Position, Test Distance [mm]	Band	Group, UID	Frequency [MHz], Channel Number	Conversion Factor	TSL Conductivity [S/m]	TSL Permittivity
Flat, MSL	,	,	0--	3700.0, 0	6.13	3.29	50.8

Hardware Setup

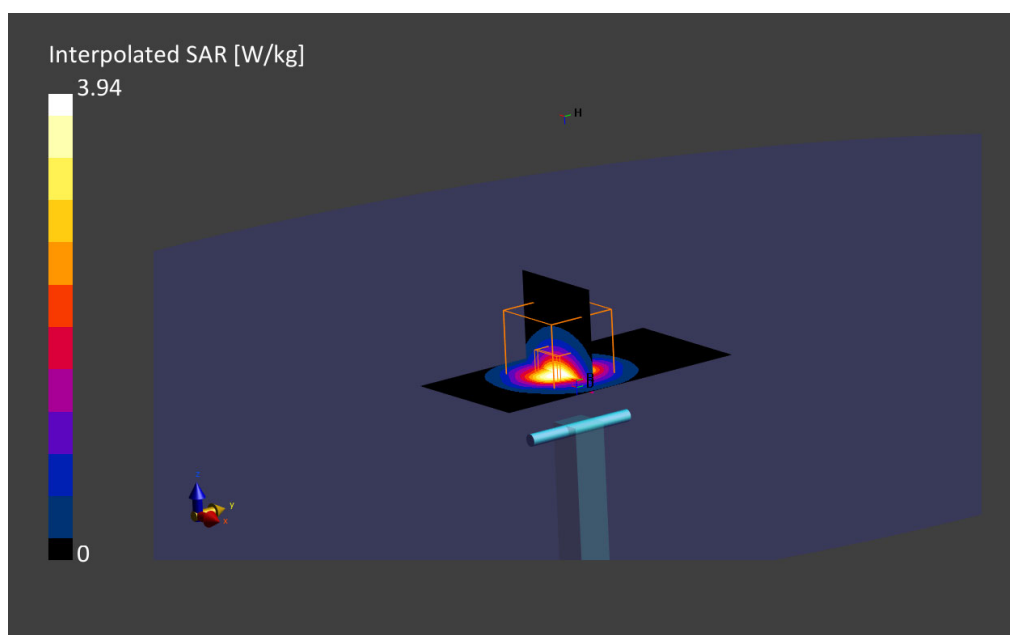
Phantom	TSL, Measured Date	Probe, Calibration Date	DAE, Calibration Date
ELI V8.0 (20deg probe tilt) - 2124	MBBL-600-6000, 2022-May-19	EX3DV4 - SN7455, 2022-03-21	DAE4 Sn1517, 2021-03-11

Scan Setup

	Area Scan	Zoom Scan
Grid Extents [mm]	40.0 x 80.0	28.0 x 28.0 x 28.0
Grid Steps [mm]	10.0 x 10.0	5.0 x 5.0 x 1.4
Sensor Surface [mm]	3.0	1.4
Graded Grid	Yes	Yes
Grading Ratio	1.5	1.5
MAIA	Confirmed by MAIA	Confirmed by MAIA
Surface Detection	VMS + 6p	VMS + 6p
Scan Method	Measured	Measured

Measurement Results

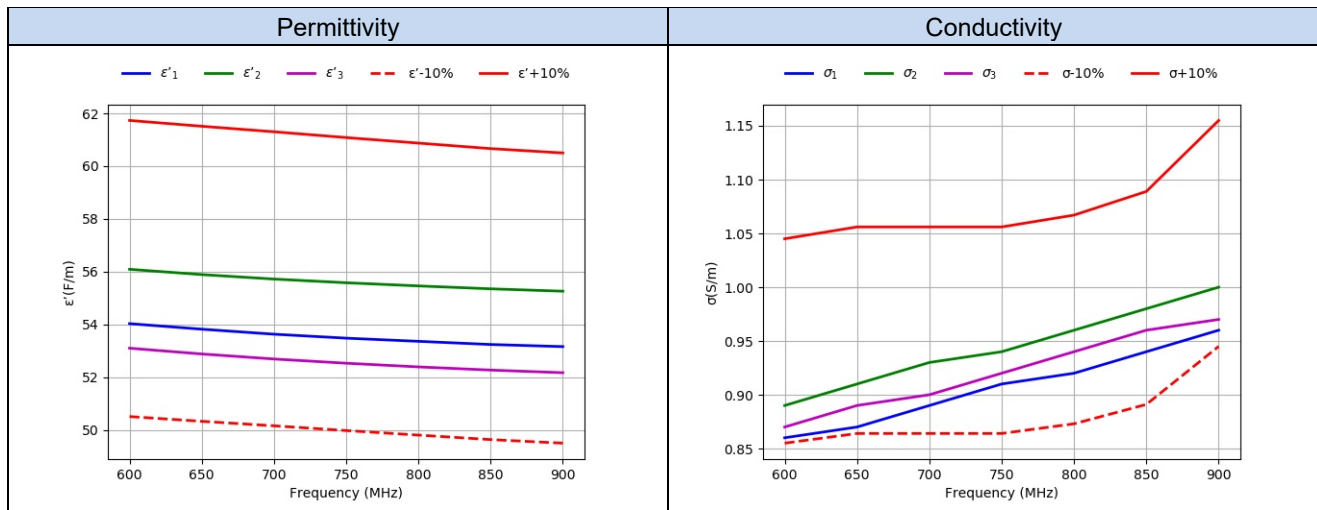
	Area Scan	Zoom Scan
Date	2022-05-19, 14:45	2022-05-19, 14:53
psSAR1g [W/Kg]	2.88	3.07
psSAR10g [W/Kg]	1.06	1.15
Power Drift [dB]	0.00	-0.03
Power Scaling	Disabled	Disabled
Scaling Factor [dB]		
TSL Correction	Positive Only	Positive Only
M2/M1 [%]		76.3
Dist 3dB Peak [mm]		8.0



Annex D. TSL Dielectric Parameters

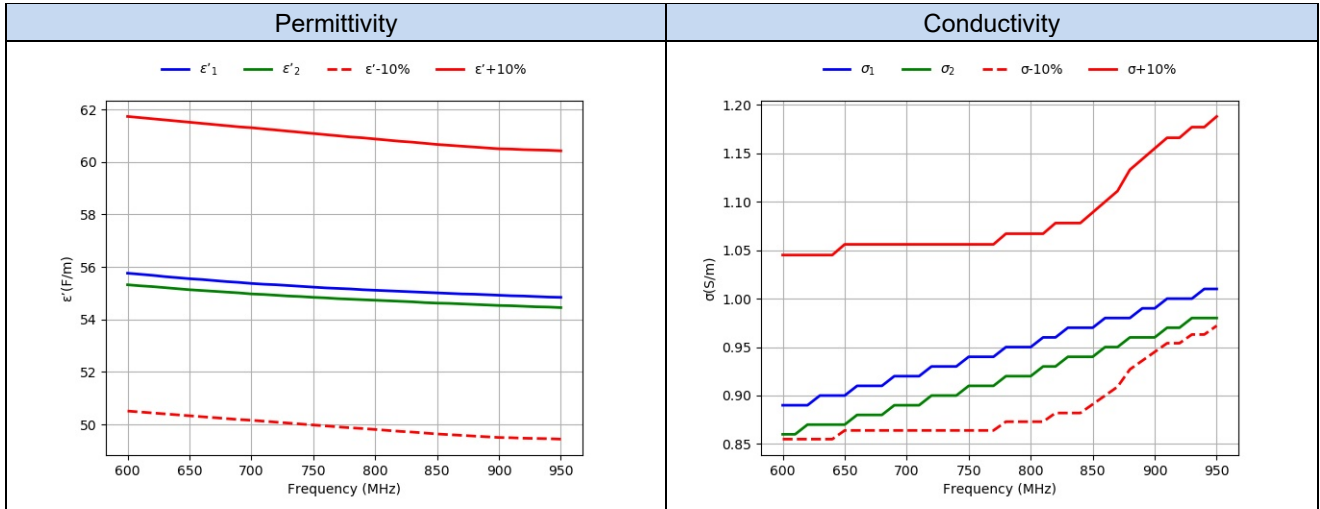
D.1 Body 600MHz-900MHz SAR System 2

Freq. (MHz)	Target		2022-04-20	2022-05-30	2022-06-14			
			Measured					
	ϵ' (F/m)	σ (S/m)	ϵ'_1 (F/m)	σ_1 (S/m)	ϵ'_2 (F/m)	σ_2 (S/m)	ϵ'_3 (F/m)	σ_3 (S/m)
600.0	56.12	0.95	54.03	0.86	56.09	0.89	53.1	0.87
650.0	55.92	0.96	53.82	0.87	55.89	0.91	52.88	0.89
700.0	55.73	0.96	53.63	0.89	55.72	0.93	52.69	0.9
750.0	55.53	0.96	53.48	0.91	55.58	0.94	52.53	0.92
800.0	55.34	0.97	53.36	0.92	55.46	0.96	52.39	0.94
850.0	55.15	0.99	53.24	0.94	55.35	0.98	52.27	0.96
900.0	55.0	1.05	53.16	0.96	55.26	1.0	52.17	0.97



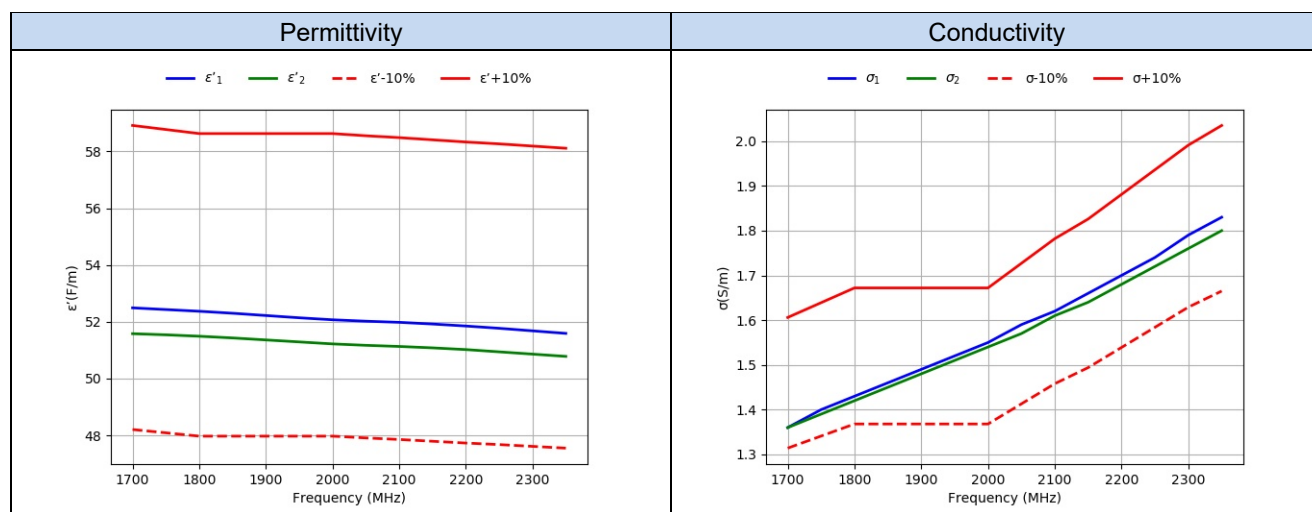
D.2 Body 600MHz-950MHz – System 4

Freq. (MHz)	Target		2022-05-16		2022-06-13	
			Measured		Measured	
	ϵ' (F/m)	σ (S/m)	$\epsilon'1$ (F/m)	$\sigma1$ (S/m)	$\epsilon'2$ (F/m)	$\sigma2$ (S/m)
600.0	56.12	0.95	55.76	0.89	55.32	0.86
610.0	56.08	0.95	55.72	0.89	55.28	0.86
620.0	56.04	0.95	55.68	0.89	55.25	0.87
630.0	56.0	0.95	55.63	0.9	55.21	0.87
640.0	55.96	0.95	55.59	0.9	55.17	0.87
650.0	55.92	0.96	55.55	0.9	55.13	0.87
660.0	55.88	0.96	55.52	0.91	55.1	0.88
670.0	55.84	0.96	55.48	0.91	55.07	0.88
680.0	55.8	0.96	55.44	0.91	55.04	0.88
690.0	55.76	0.96	55.41	0.92	55.01	0.89
700.0	55.73	0.96	55.37	0.92	54.97	0.89
710.0	55.69	0.96	55.34	0.92	54.95	0.89
720.0	55.65	0.96	55.32	0.93	54.92	0.9
730.0	55.61	0.96	55.29	0.93	54.89	0.9
740.0	55.57	0.96	55.26	0.93	54.87	0.9
750.0	55.53	0.96	55.23	0.94	54.84	0.91
760.0	55.49	0.96	55.2	0.94	54.82	0.91
770.0	55.45	0.96	55.18	0.94	54.79	0.91
780.0	55.41	0.97	55.16	0.95	54.77	0.92
790.0	55.38	0.97	55.13	0.95	54.75	0.92
800.0	55.34	0.97	55.11	0.95	54.73	0.92
810.0	55.3	0.97	55.09	0.96	54.71	0.93
820.0	55.26	0.98	55.07	0.96	54.69	0.93
830.0	55.23	0.98	55.05	0.97	54.67	0.94
840.0	55.19	0.98	55.03	0.97	54.64	0.94
850.0	55.15	0.99	55.01	0.97	54.62	0.94
860.0	55.12	1.0	54.99	0.98	54.61	0.95
870.0	55.09	1.01	54.97	0.98	54.59	0.95
880.0	55.06	1.03	54.96	0.98	54.57	0.96
890.0	55.03	1.04	54.94	0.99	54.55	0.96
900.0	55.0	1.05	54.92	0.99	54.53	0.96
910.0	54.99	1.06	54.9	1.0	54.52	0.97
920.0	54.97	1.06	54.89	1.0	54.5	0.97
930.0	54.96	1.07	54.87	1.0	54.48	0.98
940.0	54.95	1.07	54.85	1.01	54.47	0.98
950.0	54.93	1.08	54.84	1.01	54.45	0.98



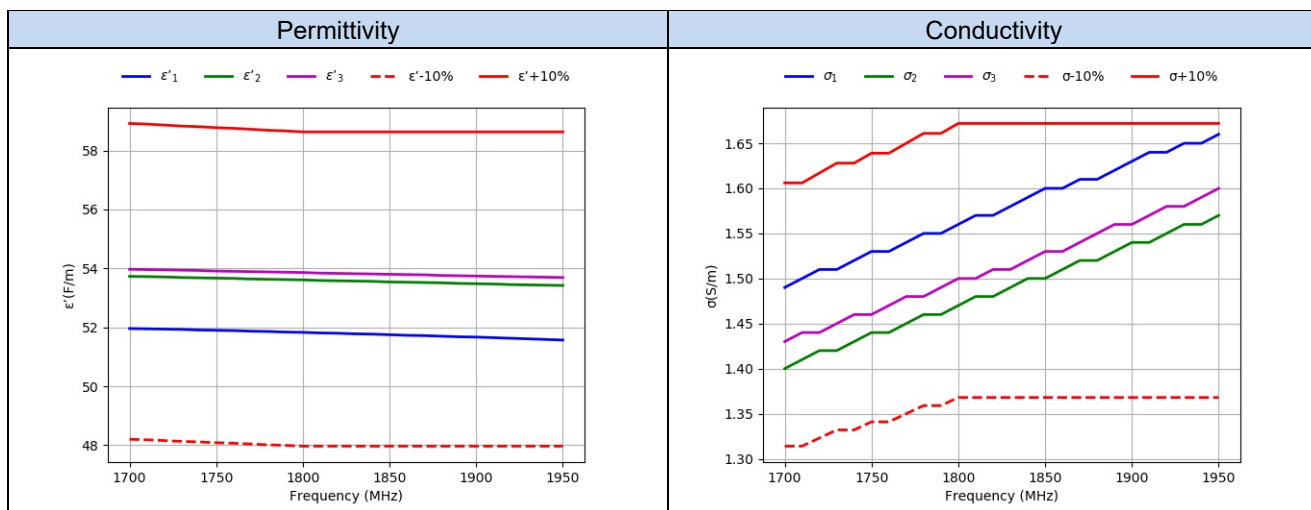
D.3 Body 1700MHz-2350MHz SAR System 2

Freq. (MHz)	Target		2022-04-20		2022-04-25	
			Measured			
	ϵ' (F/m)	σ (S/m)	ϵ'_1 (F/m)	σ_1 (S/m)	ϵ'_2 (F/m)	σ_2 (S/m)
1700.0	53.56	1.46	52.49	1.36	51.58	1.36
1750.0	53.43	1.49	52.43	1.4	51.54	1.39
1800.0	53.3	1.52	52.37	1.43	51.49	1.42
1850.0	53.3	1.52	52.3	1.46	51.43	1.45
1900.0	53.3	1.52	52.22	1.49	51.36	1.48
1950.0	53.3	1.52	52.14	1.52	51.29	1.51
2000.0	53.3	1.52	52.07	1.55	51.22	1.54
2050.0	53.23	1.57	52.02	1.59	51.17	1.57
2100.0	53.17	1.62	51.98	1.62	51.13	1.61
2150.0	53.1	1.66	51.92	1.66	51.08	1.64
2200.0	53.03	1.71	51.85	1.7	51.02	1.68
2250.0	52.97	1.76	51.77	1.74	50.94	1.72
2300.0	52.9	1.81	51.68	1.79	50.86	1.76
2350.0	52.83	1.85	51.59	1.83	50.78	1.8



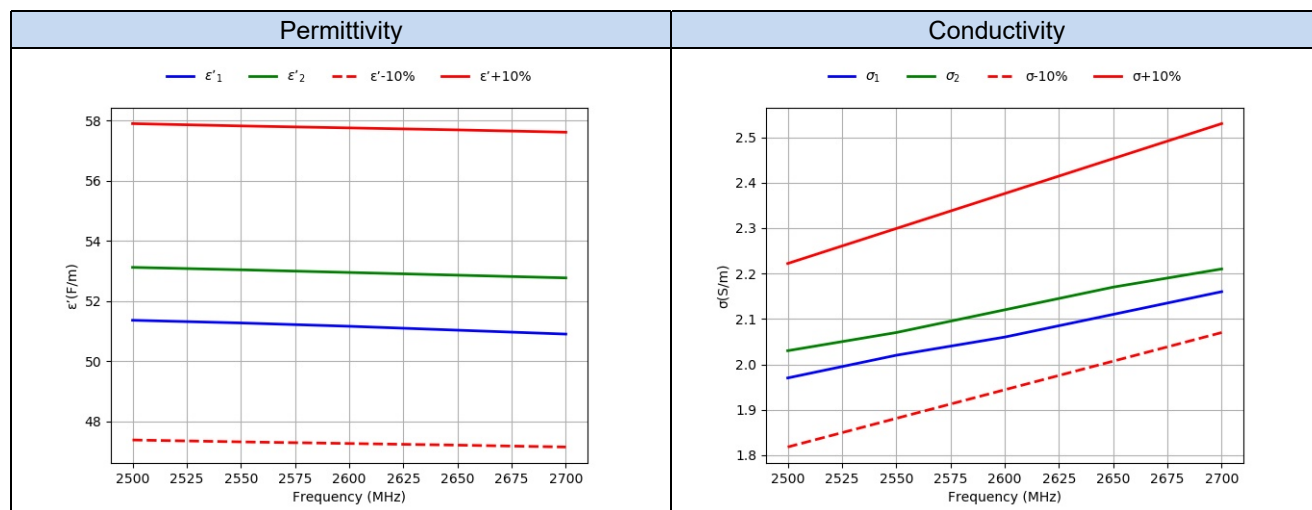
D.4 Body 1700MHz-1950MHz – System 4

Freq. (MHz)	Target		2022-05-09	2022-05-16	2022-05-19			
			Measured					
	ϵ' (F/m)	σ (S/m)	$\epsilon'1$ (F/m)	$\sigma1$ (S/m)	$\epsilon'2$ (F/m)	$\sigma2$ (S/m)	$\epsilon'3$ (F/m)	$\sigma3$ (S/m)
1700	53.56	1.46	51.96	1.49	53.73	1.4	53.97	1.43
1710	53.54	1.46	51.95	1.5	53.72	1.41	53.96	1.44
1720	53.51	1.47	51.94	1.51	53.71	1.42	53.95	1.44
1730	53.48	1.48	51.93	1.51	53.69	1.42	53.94	1.45
1740	53.46	1.48	51.91	1.52	53.68	1.43	53.93	1.46
1750	53.43	1.49	51.9	1.53	53.67	1.44	53.91	1.46
1760	53.41	1.49	51.89	1.53	53.66	1.44	53.9	1.47
1770	53.38	1.5	51.87	1.54	53.64	1.45	53.89	1.48
1780	53.35	1.51	51.86	1.55	53.63	1.46	53.88	1.48
1790	53.33	1.51	51.84	1.55	53.62	1.46	53.87	1.49
1800	53.3	1.52	51.83	1.56	53.61	1.47	53.86	1.5
1810	53.3	1.52	51.81	1.57	53.59	1.48	53.84	1.5
1820	53.3	1.52	51.8	1.57	53.58	1.48	53.83	1.51
1830	53.3	1.52	51.78	1.58	53.57	1.49	53.82	1.51
1840	53.3	1.52	51.77	1.59	53.56	1.5	53.81	1.52
1850	53.3	1.52	51.75	1.6	53.54	1.5	53.8	1.53
1860	53.3	1.52	51.73	1.6	53.53	1.51	53.79	1.53
1870	53.3	1.52	51.72	1.61	53.52	1.52	53.78	1.54
1880	53.3	1.52	51.7	1.61	53.51	1.52	53.76	1.55
1890	53.3	1.52	51.68	1.62	53.49	1.53	53.75	1.56
1900	53.3	1.52	51.67	1.63	53.48	1.54	53.74	1.56
1910	53.3	1.52	51.65	1.64	53.47	1.54	53.73	1.57
1920	53.3	1.52	51.63	1.64	53.45	1.55	53.72	1.58
1930	53.3	1.52	51.61	1.65	53.44	1.56	53.71	1.58
1940	53.3	1.52	51.59	1.65	53.43	1.56	53.7	1.59
1950	53.3	1.52	51.57	1.66	53.42	1.57	53.69	1.6



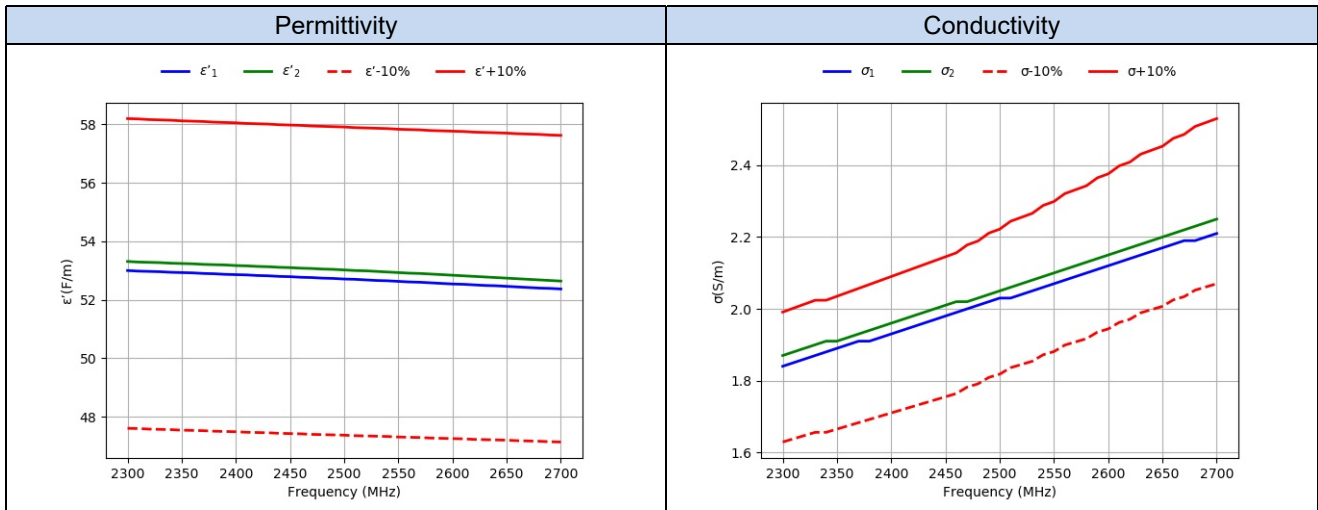
D.5 Body 2500MHz-2700MHz SAR System 2

Freq. (MHz)	Target		2022-04-20	2022-05-30		
			Measured			
	ϵ' (F/m)	σ (S/m)	ϵ'_1 (F/m)	σ_1 (S/m)	ϵ'_2 (F/m)	σ_2 (S/m)
2500.0	52.64	2.02	51.36	1.97	53.12	2.03
2550.0	52.57	2.09	51.27	2.02	53.04	2.07
2600.0	52.51	2.16	51.16	2.06	52.95	2.12
2650.0	52.45	2.23	51.03	2.11	52.86	2.17
2700.0	52.38	2.3	50.9	2.16	52.77	2.21
2500.0	52.64	2.02	51.36	1.97	53.12	2.03
2550.0	52.57	2.09	51.27	2.02	53.04	2.07
2600.0	52.51	2.16	51.16	2.06	52.95	2.12
2650.0	52.45	2.23	51.03	2.11	52.86	2.17



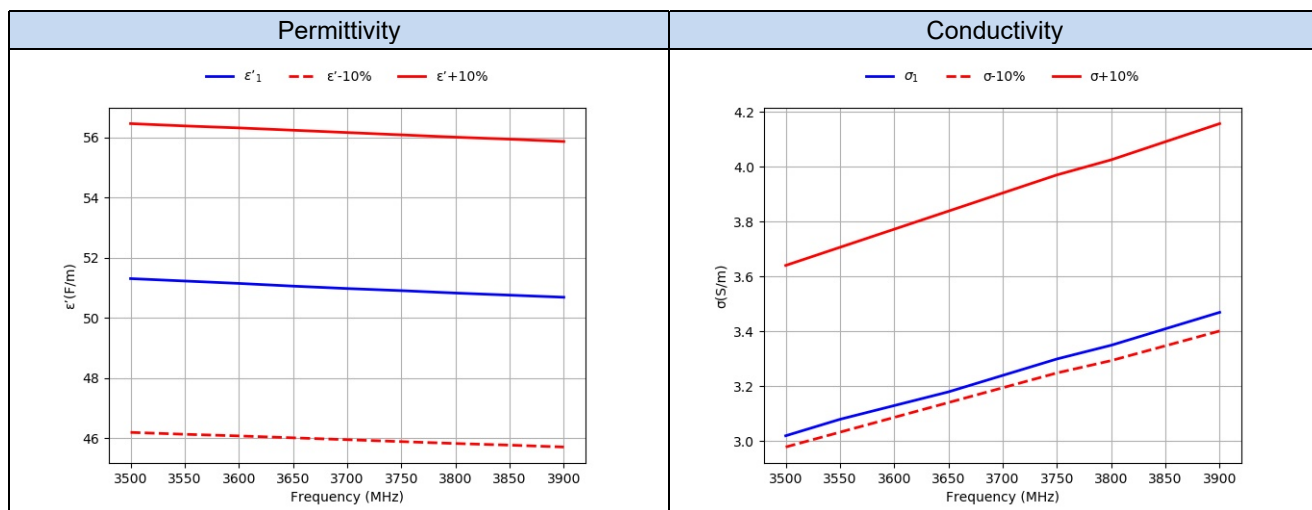
D.6 Body 2300MHz-2700MHz System 4

Freq.(MHz)	Target		2022-05-16	2022-05-19		
			Measured			
	ϵ' (F/m)	σ (S/m)	$\epsilon'1$ (F/m)	$\sigma1$ (S/m)	$\epsilon'2$ (F/m)	$\sigma2$ (S/m)
2300.0	52.9	1.81	53.0	1.84	53.31	1.87
2310.0	52.89	1.82	52.98	1.85	53.29	1.88
2320.0	52.87	1.83	52.97	1.86	53.28	1.89
2330.0	52.86	1.84	52.96	1.87	53.27	1.9
2340.0	52.85	1.84	52.94	1.88	53.25	1.91
2350.0	52.83	1.85	52.93	1.89	53.24	1.91
2360.0	52.82	1.86	52.92	1.9	53.23	1.92
2370.0	52.81	1.87	52.9	1.91	53.21	1.93
2380.0	52.79	1.88	52.89	1.91	53.2	1.94
2390.0	52.78	1.89	52.87	1.92	53.19	1.95
2400.0	52.77	1.9	52.86	1.93	53.17	1.96
2410.0	52.75	1.91	52.85	1.94	53.16	1.97
2420.0	52.74	1.92	52.83	1.95	53.14	1.98
2430.0	52.73	1.93	52.82	1.96	53.13	1.99
2440.0	52.71	1.94	52.8	1.97	53.11	2.0
2450.0	52.7	1.95	52.79	1.98	53.1	2.01
2460.0	52.69	1.96	52.77	1.99	53.08	2.02
2470.0	52.67	1.98	52.76	2.0	53.07	2.02
2480.0	52.66	1.99	52.74	2.01	53.05	2.03
2490.0	52.65	2.01	52.73	2.02	53.04	2.04
2500.0	52.64	2.02	52.71	2.03	53.02	2.05
2510.0	52.62	2.04	52.7	2.03	53.0	2.06
2520.0	52.61	2.05	52.68	2.04	52.99	2.07
2530.0	52.6	2.06	52.66	2.05	52.97	2.08
2540.0	52.59	2.08	52.65	2.06	52.95	2.09
2550.0	52.57	2.09	52.63	2.07	52.93	2.1
2560.0	52.56	2.11	52.61	2.08	52.91	2.11
2570.0	52.55	2.12	52.6	2.09	52.9	2.12
2580.0	52.53	2.13	52.58	2.1	52.88	2.13
2590.0	52.52	2.15	52.56	2.11	52.86	2.14
2600.0	52.51	2.16	52.54	2.12	52.84	2.15
2610.0	52.5	2.18	52.53	2.13	52.82	2.16
2620.0	52.48	2.19	52.51	2.14	52.8	2.17
2630.0	52.47	2.21	52.49	2.15	52.78	2.18
2640.0	52.46	2.22	52.48	2.16	52.76	2.19
2650.0	52.45	2.23	52.46	2.17	52.74	2.2
2660.0	52.43	2.25	52.44	2.18	52.72	2.21
2670.0	52.42	2.26	52.42	2.19	52.7	2.22
2680.0	52.41	2.28	52.4	2.19	52.68	2.23
2690.0	52.39	2.29	52.39	2.2	52.66	2.24
2700.0	52.38	2.3	52.37	2.21	52.64	2.25



D.7 Body 3500MHz-3900MHz SAR System 2

			2022-06-14	
Target			Measured	
Freq.(MHz)	ϵ' (F/m)	s (S/m)	ϵ' (F/m)	$s1$ (S/m)
3500.0	51.32	3.31	51.3	3.02
3550.0	51.25	3.37	51.22	3.08
3600.0	51.19	3.43	51.14	3.13
3650.0	51.12	3.49	51.05	3.18
3700.0	51.05	3.55	50.97	3.24
3750.0	50.98	3.61	50.9	3.3
3800.0	50.91	3.66	50.82	3.35
3850.0	50.85	3.72	50.75	3.41



D.8 Body 3500MHz-3900MHz System 4

Freq. (MHz)	Target		2022-05-16		2022-05-19	
			Measured			
	ϵ' (F/m)	σ (S/m)	ϵ'_1 (F/m)	σ_1 (S/m)	ϵ'_2 (F/m)	σ_2 (S/m)
3500.0	51.32	3.31	50.91	3.03	51.09	3.07
3510.0	51.31	3.33	50.89	3.04	51.07	3.08
3520.0	51.29	3.34	50.88	3.05	51.05	3.09
3530.0	51.28	3.35	50.86	3.07	51.04	3.1
3540.0	51.27	3.36	50.85	3.08	51.02	3.11
3550.0	51.25	3.37	50.83	3.09	51.01	3.12
3560.0	51.24	3.38	50.82	3.1	50.99	3.13
3570.0	51.23	3.4	50.8	3.11	50.98	3.14
3580.0	51.21	3.41	50.78	3.12	50.96	3.15
3590.0	51.2	3.42	50.77	3.13	50.94	3.17
3600.0	51.19	3.43	50.75	3.14	50.93	3.18
3610.0	51.17	3.44	50.74	3.15	50.91	3.19
3620.0	51.16	3.45	50.72	3.16	50.9	3.2
3630.0	51.15	3.47	50.71	3.17	50.88	3.21
3640.0	51.13	3.48	50.69	3.19	50.87	3.22
3650.0	51.12	3.49	50.68	3.2	50.85	3.23
3660.0	51.1	3.5	50.67	3.21	50.84	3.25
3670.0	51.09	3.51	50.65	3.22	50.82	3.26
3680.0	51.08	3.52	50.64	3.23	50.81	3.27
3690.0	51.06	3.54	50.62	3.24	50.79	3.28
3700.0	51.05	3.55	50.61	3.25	50.78	3.29
3710.0	51.04	3.56	50.59	3.26	50.76	3.3
3720.0	51.02	3.57	50.58	3.28	50.75	3.31
3730.0	51.01	3.58	50.56	3.29	50.73	3.32
3740.0	51.0	3.59	50.55	3.3	50.72	3.34
3750.0	50.98	3.61	50.53	3.31	50.7	3.35
3760.0	50.97	3.62	50.52	3.32	50.69	3.36
3770.0	50.95	3.63	50.5	3.33	50.67	3.37
3780.0	50.94	3.64	50.49	3.35	50.66	3.38
3790.0	50.93	3.65	50.47	3.36	50.64	3.39
3800.0	50.91	3.66	50.46	3.37	50.63	3.41
3810.0	50.9	3.68	50.44	3.38	50.61	3.42
3820.0	50.89	3.69	50.43	3.39	50.6	3.43
3830.0	50.87	3.7	50.42	3.4	50.59	3.44
3840.0	50.86	3.71	50.4	3.42	50.57	3.45
3850.0	50.85	3.72	50.39	3.43	50.56	3.47
3860.0	50.83	3.73	50.37	3.44	50.54	3.48
3870.0	50.82	3.75	50.36	3.45	50.53	3.49
3880.0	50.81	3.76	50.34	3.46	50.51	3.5
3890.0	50.79	3.77	50.33	3.48	50.5	3.51
3900.0	50.78	3.78	50.31	3.49	50.49	3.53

