

**7. LTE Band 13, QPSK - 10MHz, CH23230, Top edge**

**Device under Test Properties**

Name, Manufacturer	Dimensions [mm]	S/N	DUT Type
HSN-I46C	225.0 x 315.0 x 17.0	00017609DK	Convertible PC

**Exposure Conditions**

Phantom Section, TSL	Position, Test Distance [mm]	Band	Group, UID	Frequency [MHz], Channel Number	Conversion Factor	TSL Conductivity [S/m]	TSL Permittivity
Flat, MSL	EDGE TOP, 0.00	Band 13, E-UTRA/FDD	LTE-FDD, 10175-CAG	782.0, 23230	10.05	0.96	53.4

**Hardware Setup**

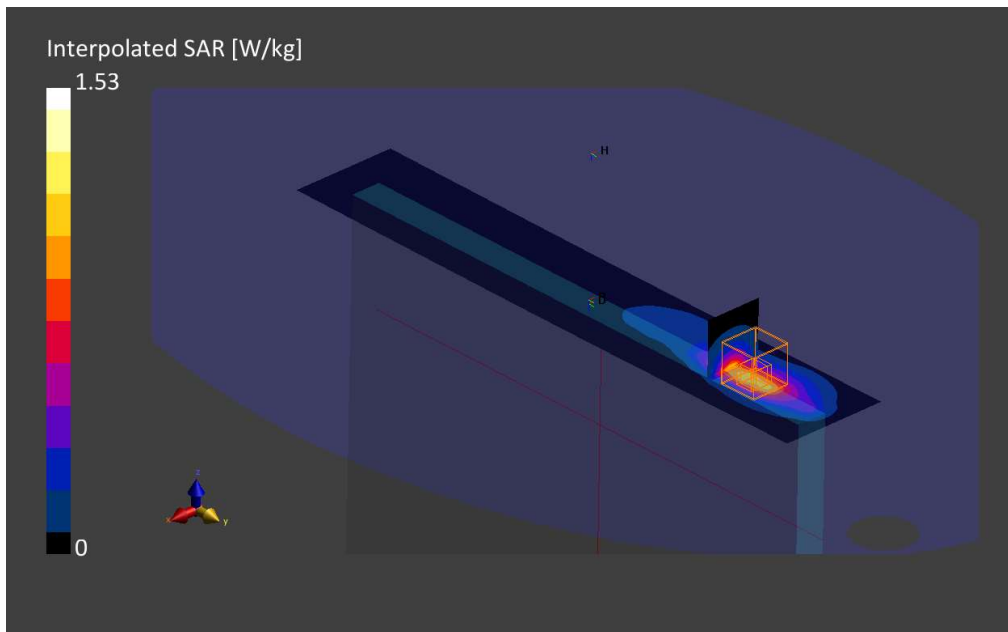
Phantom	TSL, Measured Date	Probe, Calibration Date	DAE, Calibration Date
ELI V8.0 (20deg probe tilt)	MABL-600-6000, 2021-Nov-22	EX3DV4 - SN3978, 2021-05-21	DAE4 Sn1429, 2021-05-11

**Scan Setup**

	Area Scan	Zoom Scan
Grid Extents [mm]	60.0 x 330.0	30.0 x 30.0 x 30.0
Grid Steps [mm]	15.0 x 15.0	5.4 x 5.4 x 1.5
Sensor Surface [mm]	3.0	1.4
Graded Grid	Yes	Yes
Grading Ratio	1.5	1.5
MAIA	Confirmed by MAIA	Confirmed by MAIA
Surface Detection	VMS + 6p	VMS + 6p
Scan Method	Measured	Measured

**Measurement Results**

	Area Scan	Zoom Scan
Date	2021-11-23, 12:48	2021-11-23, 13:01
psSAR1g [W/kg]	0.952	1.00
psSAR10g[W/kg]	0.556	0.503
Power Drift [dB]	0.00	-0.01
Power Scaling	Disabled	Disabled
Scaling Factor		
[dB]		
TSL Correction	Positive Only	Positive Only
M2/M1 [%]		71.7
Dist3dBPeak[mm]		7.6



**8. LTE Band 14, QPSK - 10MHz, CH23330, Top edge**

**Device under Test Properties**

Name, Manufacturer	Dimensions [mm]	S/N	DUT Type
HSN-I46C	225.0 x 315.0 x 17.0	00017609DK	Convertible PC

**Exposure Conditions**

Phantom Section, TSL	Position, Test Distance [mm]	Band	Group, UID	Frequency [MHz], Channel Number	Conversion Factor	TSL Conductivity [S/m]	TSL Permittivity
Flat, MSL	EDGE TOP, 0.00	Band 14, E-UTRA/FDD	LTE-FDD, 10175-CAG	793.0, 23330	10.05	0.96	53.4

**Hardware Setup**

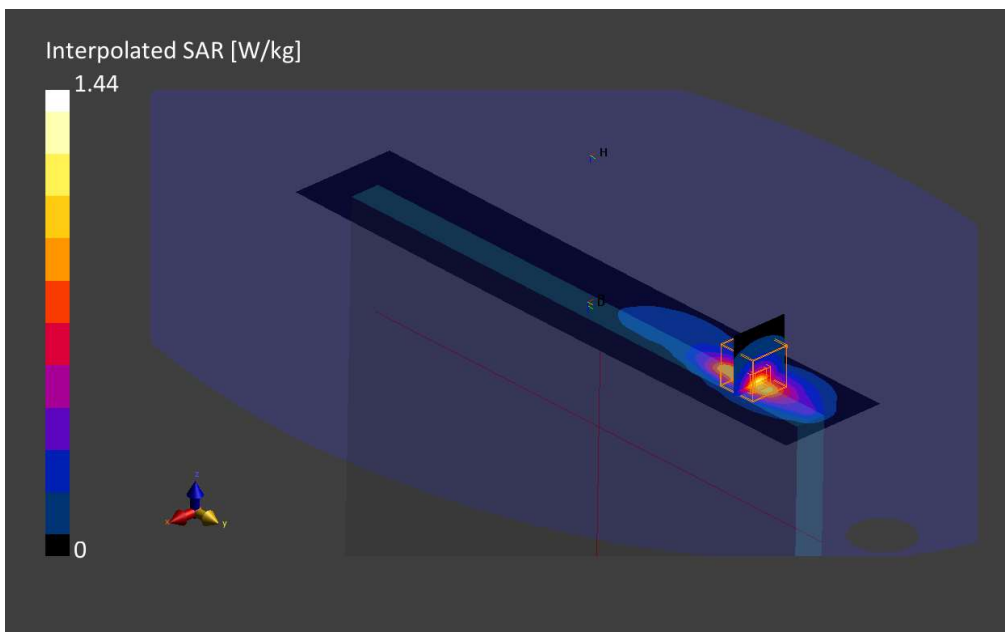
Phantom	TSL, Measured Date	Probe, Calibration Date	DAE, Calibration Date
ELI V8.0 (20deg probe tilt)	MABL-600-6000, 2021-Nov-22	EX3DV4 - SN3978, 2021-05-21	DAE4 Sn1429, 2021-05-11

**Scan Setup**

	Area Scan	Zoom Scan
Grid Extents [mm]	60.0 x 330.0	30.0 x 30.0 x 30.0
Grid Steps [mm]	15.0 x 15.0	5.4 x 5.4 x 1.5
Sensor Surface [mm]	3.0	1.4
Graded Grid	Yes	Yes
Grading Ratio	1.5	1.5
MAIA	Confirmed by MAIA	Confirmed by MAIA
Surface Detection	VMS + 6p	VMS + 6p
Scan Method	Measured	Measured

**Measurement Results**

	Area Scan	Zoom Scan
Date	2021-11-23, 10:27	2021-11-23, 10:40
psSAR1g [W/kg]	0.927	0.969
psSAR10g[W/kg]	0.537	0.482
Power Drift [dB]	-0.00	-0.00
Power Scaling	Disabled	Disabled
Scaling Factor		
TSL Correction	Positive Only	Positive Only
M2/M1 [%]		70.5
Dist3dBPeak[mm]		6.8



**9. LTE Band 25, QPSK - 20MHz, CH26365, Top Edge**

**Device under Test Properties**

Name, Manufacturer	Dimensions [mm]	S/N	DUT Type
HSN-I46C	225.0 x 315.0 x 17.0	00017609DK	Convertible PC

**Exposure Conditions**

Phantom Section, TSL	Position, Test Distance [mm]	Band	Group, UID	Frequency [MHz], Channel Number	Conversion Factor	TSL Conductivity [S/m]	TSL Permittivity
Flat, MSL	EDGE TOP, 0.00	Band 25, E-UTRA/FDD	LTE-FDD, 10169-CAE	1882.5, 26365	7.97	1.57	51.1

**Hardware Setup**

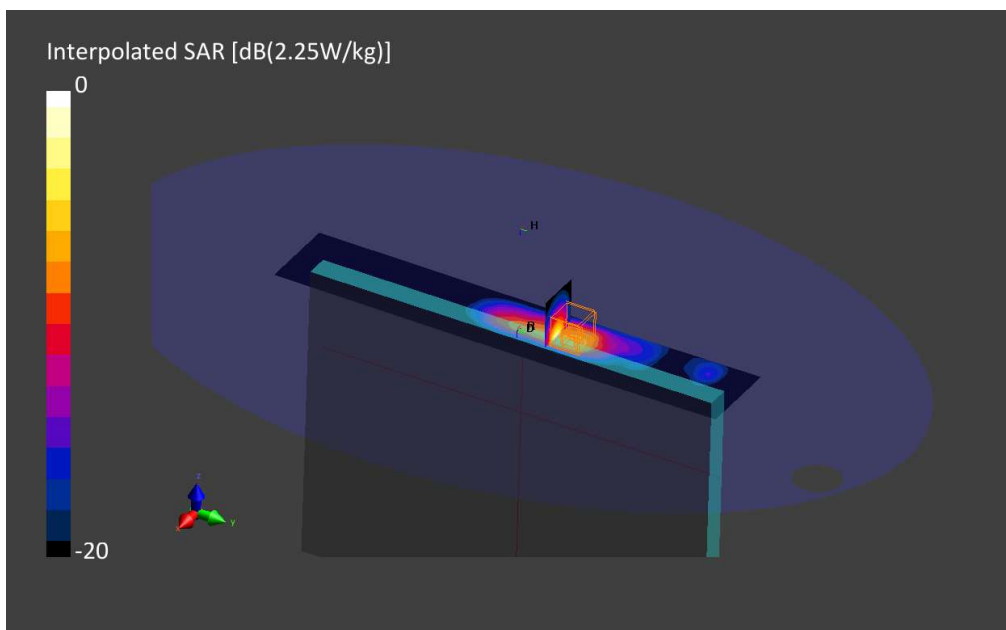
Phantom	TSL, Measured Date	Probe, Calibration Date	DAE, Calibration Date
ELI V8.0 (20deg probe tilt)	MBBL-600-6000, 2021-Nov-22	EX3DV4 - SN3978, 2021-05-21	DAE4 Sn1429, 2021-05-11

**Scan Setup**

	Area Scan	Zoom Scan
Grid Extents [mm]	60.0 x 360.0	30.0 x 30.0 x 30.0
Grid Steps [mm]	15.0 x 15.0	4.9 x 4.9 x 1.4
Sensor Surface [mm]	3.0	1.4
Graded Grid	Yes	Yes
Grading Ratio	1.5	1.4
MAIA	Confirmed by MAIA	Confirmed by MAIA
Surface Detection	VMS + 6p	VMS + 6p
Scan Method	Measured	Measured

**Measurement Results**

	Area Scan	Zoom Scan
Date	2021-11-24, 20:36	2021-11-24, 20:45
psSAR1g [W/kg]	0.546	0.839
psSAR10g [W/kg]	0.295	0.376
Power Drift [dB]	0.04	-0.01
Power Scaling	Disabled	Disabled
Scaling Factor [dB]		
TSL Correction	No correction	No correction
M2/M1 [%]		73.5
Dist 3dB Peak [mm]		6.2



**10. LTE Band 26, QPSK - 15MHz, CH26865, Top Edge**

**Device under Test Properties**

Name, Manufacturer	Dimensions [mm]	S/N	DUT Type
HSN-I46C	225.0 x 315.0 x 17.0	00017609DK	Convertible PC

**Exposure Conditions**

Phantom Section, TSL	Position, Test Distance [mm]	Band	Group, UID	Frequency [MHz], Channel Number	Conversion Factor	TSL Conductivity [S/m]	TSL Permittivity
Flat, MSL	EDGE TOP, 0.00	Band 26 E-UTRA/FDD	LTE-FDD, 10181-CAE	831.5, 26865	9.79	0.98	53.3

**Hardware Setup**

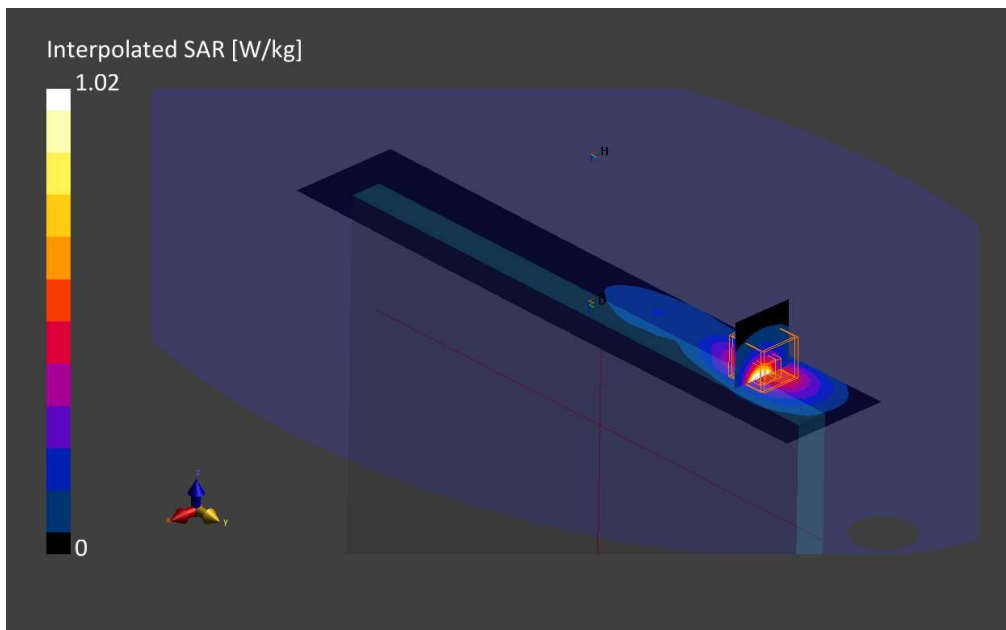
Phantom	TSL, Measured Date	Probe, Calibration Date	DAE, Calibration Date
ELI V8.0 (20deg probe tilt)	MBBL-600-6000, 2021-Nov-22	EX3DV4 - SN3978, 2021-05-21	DAE4 Sn1429, 2021-05-11

**Scan Setup**

	Area Scan	Zoom Scan
Grid Extents [mm]	60.0 x 330.0	30.0 x 30.0 x 30.0
Grid Steps [mm]	15.0 x 15.0	4.9 x 4.9 x 1.4
Sensor Surface [mm]	3.0	1.4
Graded Grid	Yes	Yes
Grading Ratio	1.5	1.4
MAIA	Confirmed by MAIA	Confirmed by MAIA
Surface Detection	VMS + 6p	VMS + 6p
Scan Method	Measured	Measured

**Measurement Results**

	Area Scan	Zoom Scan
Date	2021-11-23, 18:22	2021-11-23, 18:31
psSAR1g [W/kg]	0.524	0.723
psSAR10g[W/kg]	0.332	0.352
Power Drift [dB]	0.01	-0.01
Power Scaling	Disabled	Disabled
Scaling Factor		
TSL Correction [dB]	Positive Only	Positive Only
M2/M1 [%]		68.7
Dist3dBPeak[mm]		5.9



**11. LTE Band 30, QPSK - 10MHz, CH27710, Top Edge**

**Device under Test Properties**

Name, Manufacturer	Dimensions [mm]	S/N	DUT Type
HSN-I46C	225.0 x 315.0 x 17.0	00017609DK	Convertible PC

**Exposure Conditions**

Phantom Section, TSL	Position, Test Distance [mm]	Band	Group, UID	Frequency [MHz], Channel Number	Conversion Factor	TSL Conductivity [S/m]	TSL Permittivity
Flat, MSL	EDGE TOP, 0.00	Band 30, E-UTRA/FDD	LTE-FDD, 10175-CAG	2310.0, 27710	7.45	1.85	50.9

**Hardware Setup**

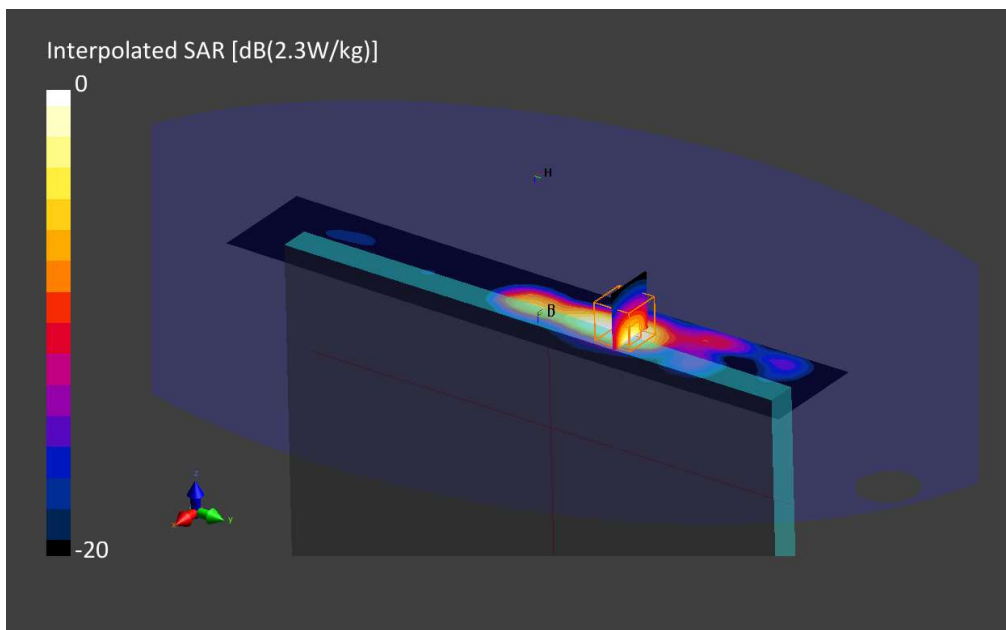
Phantom	TSL, Measured Date	Probe, Calibration Date	DAE, Calibration Date
ELI V8.0 (20deg probe tilt)	MBBL-600-6000, 2021-Nov-29	EX3DV4 - SN3978, 2021-05-21	DAE4 Sn1429, 2021-05-11

**Scan Setup**

	Area Scan	Zoom Scan
Grid Extents [mm]	60.0 x 340.0	30.0 x 30.0 x 30.0
Grid Steps [mm]	10.0 x 10.0	5.0 x 5.0 x 1.5
Sensor Surface [mm]	3.0	1.4
Graded Grid	Yes	Yes
Grading Ratio	1.5	1.5
MAIA	Confirmed by MAIA	Confirmed by MAIA
Surface Detection	VMS + 6p	VMS + 6p
Scan Method	Measured	Measured

**Measurement Results**

	Area Scan	Zoom Scan
Date	2021-11-30, 20:28	2021-11-30, 20:35
psSAR1g [W/kg]	0.900	0.947
psSAR10g[W/kg]	0.410	0.401
Power Drift [dB]	-0.02	-0.00
Power Scaling	Disabled	Disabled
Scaling Factor [dB]		
TSL Correction	Positive Only	Positive Only
M2/M1 [%]		74.1
Dist3dBPeak[mm]		7.0



**12. LTE Band 41, QPSK - 20MHz, CH40620, Top Edge**

**Device under Test Properties**

Name, Manufacturer	Dimensions [mm]	S/N	DUT Type
HSN-I46C	225.0 x 315.0 x 17.0	00017609DK	Convertible PC

**Exposure Conditions**

Phantom Section, TSL	Position, Test Distance [mm]	Band	Group, UID	Frequency [MHz], Channel Number	Conversion Factor	TSL Conductivity [S/m]	TSL Permittivity
Flat, MSL	EDGE TOP, 0.00	Band 41, E-UTRA/TDD	LTE-TDD, 10435-AAF	2593.0, 40620	7.3	2.18	50.2

**Hardware Setup**

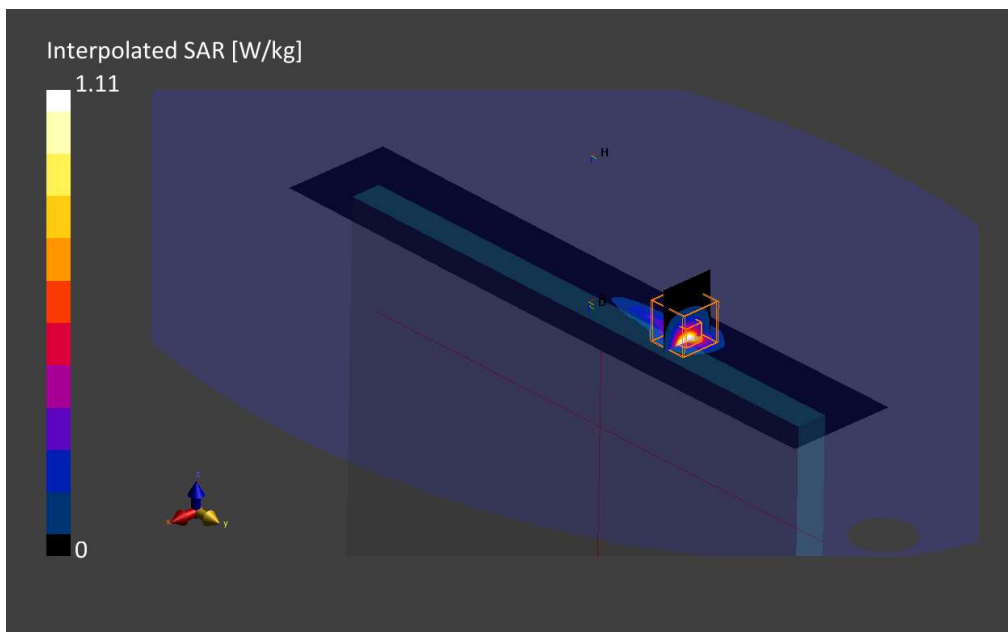
Phantom	TSL, Measured Date	Probe, Calibration Date	DAE, Calibration Date
ELI V8.0 (20deg probe tilt)	MBBL-600-6000, 2021-Nov-22	EX3DV4 - SN3978, 2021-05-21	DAE4 Sn1429, 2021-05-11

**Scan Setup**

	Area Scan	Zoom Scan
Grid Extents [mm]	60.0 x 340.0	30.0 x 30.0 x 30.0
Grid Steps [mm]	10.0 x 10.0	5.0 x 5.0 x 1.5
Sensor Surface [mm]	3.0	1.4
Graded Grid	Yes	Yes
Grading Ratio	1.5	1.5
MAIA	Confirmed by MAIA	Confirmed by MAIA
Surface Detection	VMS + 6p	VMS + 6p
Scan Method	Measured	Measured

**Measurement Results**

	Area Scan	Zoom Scan
Date	2021-11-23, 20:54	2021-11-23, 21:01
psSAR1g [W/kg]	0.652	0.655
psSAR10g W/kg]	0.252	0.247
Power Drift [dB]	-0.01	0.01
Power Scaling	Disabled	Disabled
Scaling Factor [dB]		
TSL Correction	Positive Only	Positive Only
M2/M1 [%]		73.1
Dist3dBPeak[mm]		6.1



**13. LTE Band 48, QPSK - 20MHz, CH55990, Top Edge**

**Device under Test Properties**

Name, Manufacturer	Dimensions [mm]	S/N	DUT Type
HSN-I46C	225.0 x 315.0 x 17.0	00017609DK	Convertible PC

**Exposure Conditions**

Phantom Section, TSL	Position, Test Distance [mm]	Band	Group, UID	Frequency [MHz], Channel Number	Conversion Factor	TSL Conductivity [S/m]	TSL Permittivity
Flat, MSL	EDGE TOP, 0.00	Band 48, E-UTRA/TDD	LTE-TDD, 10435-AAF	3625.0, 55990	6.88	3.30	48.4

**Hardware Setup**

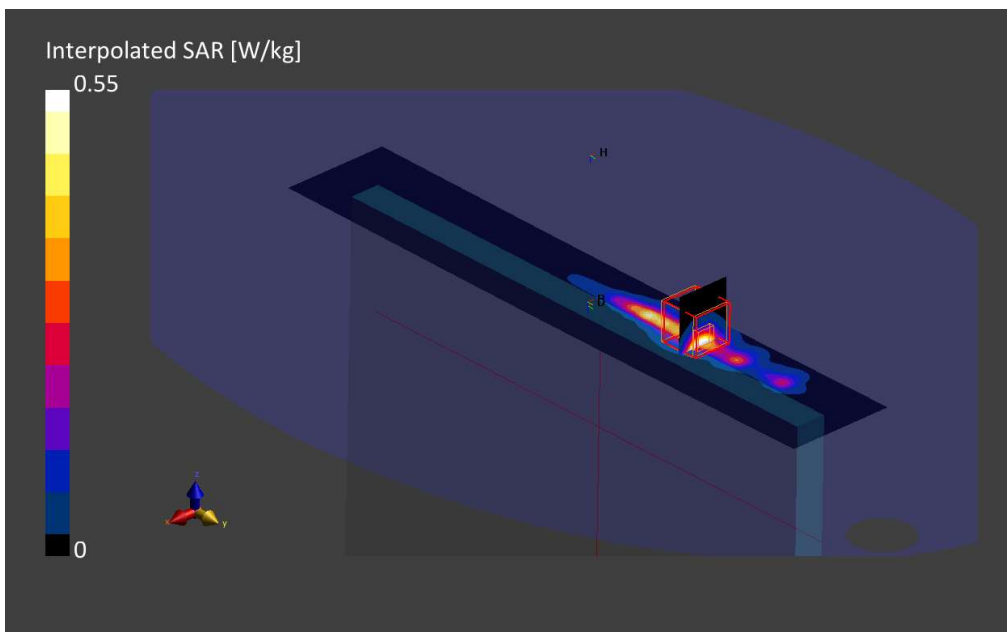
Phantom	TSL, Measured Date	Probe, Calibration Date	DAE, Calibration Date
ELI V8.0 (20deg probe tilt)	MABL-600-6000, 2021-Nov-22	EX3DV4 - SN3978, 2021-05-21	DAE4 Sn1429, 2021-05-11

**Scan Setup**

	Area Scan	Zoom Scan
Grid Extents [mm]	60.0 x 340.0	28.0 x 28.0 x 28.0
Grid Steps [mm]	10.0 x 10.0	5.0 x 5.0 x 1.4
Sensor Surface [mm]	3.0	1.4
Graded Grid	Yes	Yes
Grading Ratio	1.5	1.5
MAIA	Confirmed by MAIA	Confirmed by MAIA
Surface Detection	VMS + 6p	VMS + 6p
Scan Method	Measured	Measured

**Measurement Results**

	Area Scan	Zoom Scan
Date	2021-11-24, 10:10	2021-11-24, 10:16
psSAR1g [W/kg]	0.345	0.352
psSAR10g[W/kg]	0.134	0.136
Power Drift [dB]	-0.03	0.05
Power Scaling	Disabled	Disabled
Scaling Factor [dB]		
TSL Correction	Positive Only	Positive Only
M2/M1 [%]		74.4
Dist3dBPeak[mm]		7.2



**14. LTE Band 66, QPSK - 20MHz, CH132572, Top Edge**

**Device under Test Properties**

Name, Manufacturer	Dimensions [mm]	S/N	DUT Type
HSN-I46C	225.0 x 315.0 x 17.0	00017609DK	Convertible PC

**Exposure Conditions**

Phantom Section, TSL	Position, Test Distance [mm]	Band	Group, UID	Frequency [MHz], Channel Number	Conversion Factor	TSL Conductivity [S/m]	TSL Permittivity
Flat, MSL	EDGE TOP, 0.00	Band 66, E-UTRA/FDD	LTE-FDD, 10169-CAE	1770.0, 132572	8.26	1.49	51.2

**Hardware Setup**

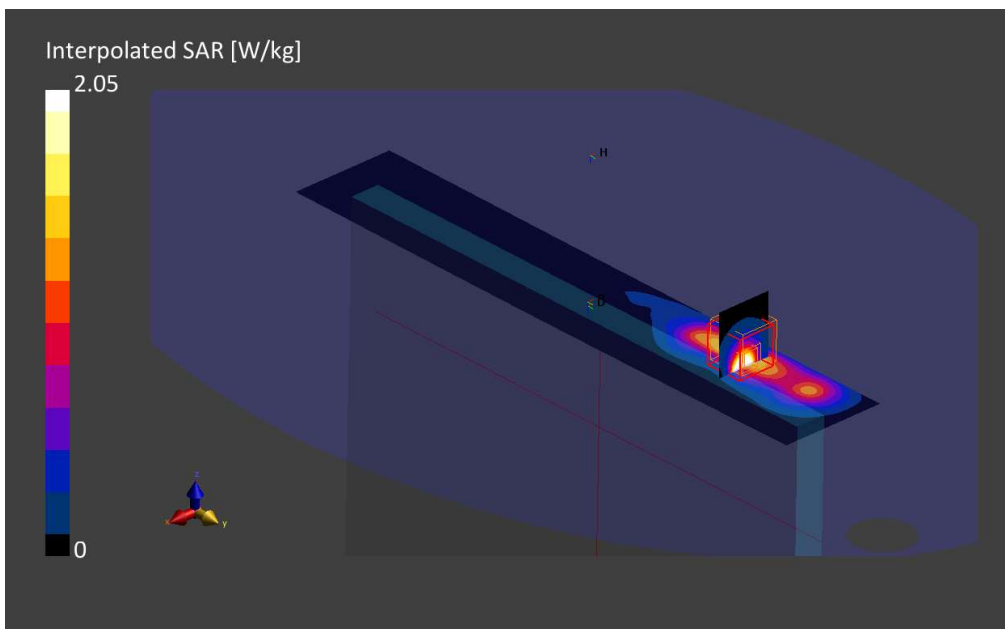
Phantom	TSL, Measured Date	Probe, Calibration Date	DAE, Calibration Date
ELI V8.0 (20deg probe tilt)	MABL-600-6000, 2021-Nov-22	EX3DV4 - SN3978, 2021-05-21	DAE4 Sn1429, 2021-05-11

**Scan Setup**

	Area Scan	Zoom Scan
Grid Extents [mm]	60.0 x 330.0	30.0 x 30.0 x 30.0
Grid Steps [mm]	15.0 x 15.0	4.5 x 4.5 x 1.4
Sensor Surface [mm]	3.0	1.4
Graded Grid	Yes	Yes
Grading Ratio	1.5	1.4
MAIA	Confirmed by MAIA	Confirmed by MAIA
Surface Detection	VMS + 6p	VMS + 6p
Scan Method	Measured	Measured

**Measurement Results**

	Area Scan	Zoom Scan
Date	2021-11-24, 08:34	2021-11-24, 08:44
psSAR1g [W/kg]	0.564	0.750
psSAR10g[W/kg]	0.293	0.316
Power Drift [dB]	0.00	-0.03
Power Scaling	Disabled	Disabled
Scaling Factor [dB]		
TSL Correction	Positive Only	Positive Only
M2/M1 [%]		71.3
Dist3dBPeak[mm]		5.4





**15.5G NR FR1 Band 2, QPSK - 20MHz, CH376000 – Top Edge**

**Device under Test Properties**

Name, Manufacturer	Dimensions [mm]	S/N	DUT Type
HSN-I46C	225.0 x 315.0 x 17.0	00017609D3	Convertible PC

**Exposure Conditions**

Phantom Section, TSL	Position, Test Distance [mm]	Band	Group, UID	Frequency [MHz], Channel Number	Conversion Factor	TSL Conductivity [S/m]	TSL Permittivity
Flat, MSL	EDGE TOP, 0.00	Band n2	5G NR FR1 FDD, 10931-AAB	1880.0, 376000	8.62	1.49	51.6

**Hardware Setup**

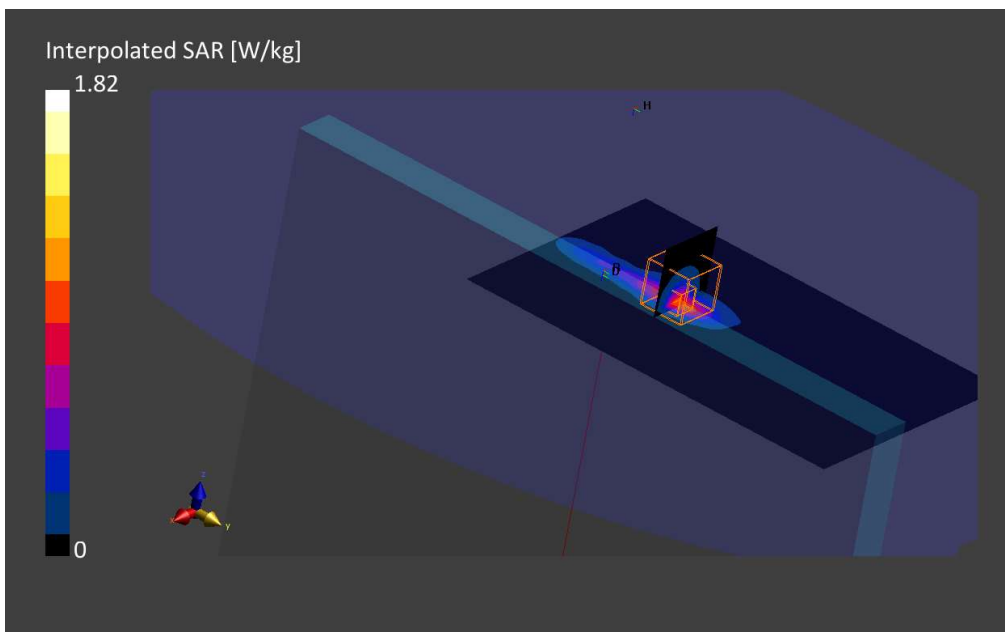
Phantom	TSL, Measured Date	Probe, Calibration Date	DAE, Calibration Date
ELI V8.0 (20deg probe tilt) - 2124	MBBL-600-6000, 2021-Nov-16	EX3DV4 - SN7604, 2021-08-16	DAE4 Sn1628, 2021-08-06

**Scan Setup**

	Area Scan	Zoom Scan
Grid Extents [mm]	120.0 x 192.0	30.0 x 30.0 x 30.0
Grid Steps [mm]	12.0 x 12.0	5.8 x 5.8 x 1.5
Sensor Surface [mm]	3.0	1.4
Graded Grid	Yes	Yes
Grading Ratio	1.5	1.5
MAIA	Confirmed by MAIA	Confirmed by MAIA
Surface Detection	VMS + 6p	VMS + 6p
Scan Method	Measured	Measured

**Measurement Results**

	Area Scan	Zoom Scan
Date	2021-11-16, 18:57	2021-11-16, 19:16
psSAR1g [W/kg]	0.829	0.847
psSAR10g[W/kg]	0.385	0.371
Power Drift [dB]	0.01	-0.05
Power Scaling	Disabled	Disabled
Scaling Factor		
TSL Correction [dB]	Positive Only	Positive Only
M2/M1 [%]		82.2
Dist3dBPeak[mm]		6.2



**16.5G NR FR1 Band 5, QPSK - 20MHz, CH167300 – Top Edge**

**Device under Test Properties**

Name, Manufacturer	Dimensions [mm]	S/N	DUT Type
HSN-I46C	225.0 x 315.0 x 17.0	00017609D3	Convertible PC

**Exposure Conditions**

Phantom Section, TSL	Position, Test Distance [mm]	Band	Group, UID	Frequency [MHz], Channel Number	Conversion Factor	TSL Conductivity [S/m]	TSL Permittivity
Flat, MSL	EDGE TOP, 0.00	Band n5	5G NR FR1 FDD, 10931-AAB	836.5, 167300	10.82	0.94	53.2

**Hardware Setup**

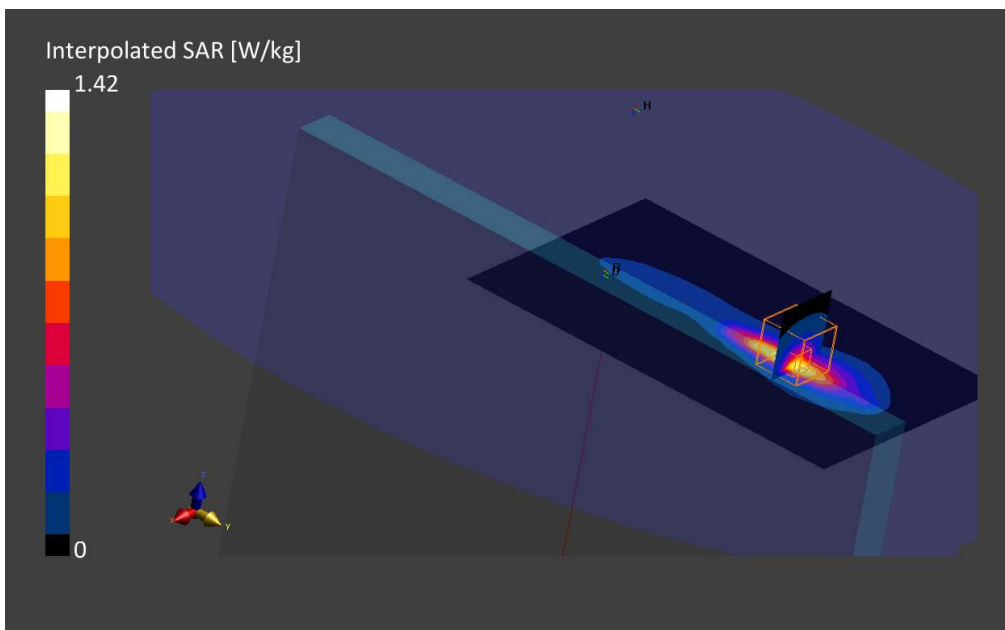
Phantom	TSL, Measured Date	Probe, Calibration Date	DAE, Calibration Date
ELI V8.0 (20deg probe tilt) - 2124	MBBL-600-6000 , 2021-Nov-16	EX3DV4 - SN7604, 2021-08-16	DAE4 Sn1628, 2021-08-06

**Scan Setup**

	Area Scan	Zoom Scan
Grid Extents [mm]	120.0 x 192.0	30.0 x 30.0 x 30.0
Grid Steps [mm]	12.0 x 12.0	4.0 x 4.0 x 1.4
Sensor Surface [mm]	3.0	1.4
Graded Grid	Yes	Yes
Grading Ratio	1.5	1.4
MAIA	Confirmed by MAIA	Confirmed by MAIA
Surface Detection	VMS + 6p	VMS + 6p
Scan Method	Measured	Measured

**Measurement Results**

	Area Scan	Zoom Scan
Date	2021-11-17, 19:08	2021-11-17, 19:24
psSAR1g [W/kg]	0.795	0.894
psSAR10g[W/kg]	0.465	0.438
Power Drift [dB]	-0.06	0.05
Power Scaling	Disabled	Disabled
Scaling Factor		
TSL Correction [dB]	Positive Only	Positive Only
M2/M1 [%]		67.8
Dist3dBPeak[mm]		6.4



**17.5G NR FR1 Band 7, QPSK - 20MHz, CH507000 – Top Edge**

**Device under Test Properties**

Name, Manufacturer	Dimensions [mm]	S/N	DUT Type
HSN-I46C	225.0 x 315.0 x 17.0	00017609D3	Convertible PC

**Exposure Conditions**

Phantom Section, TSL	Position, Test Distance [mm]	Band	Group, UID	Frequency [MHz], Channel Number	Conversion Factor	TSL Conductivity [S/m]	TSL Permittivity
Flat, MSL	EDGE TOP, 0.00	Band n7	5G NR FR1 FDD, 10947-AAB	2535.0, 507000	8.1	2.06	49.5

**Hardware Setup**

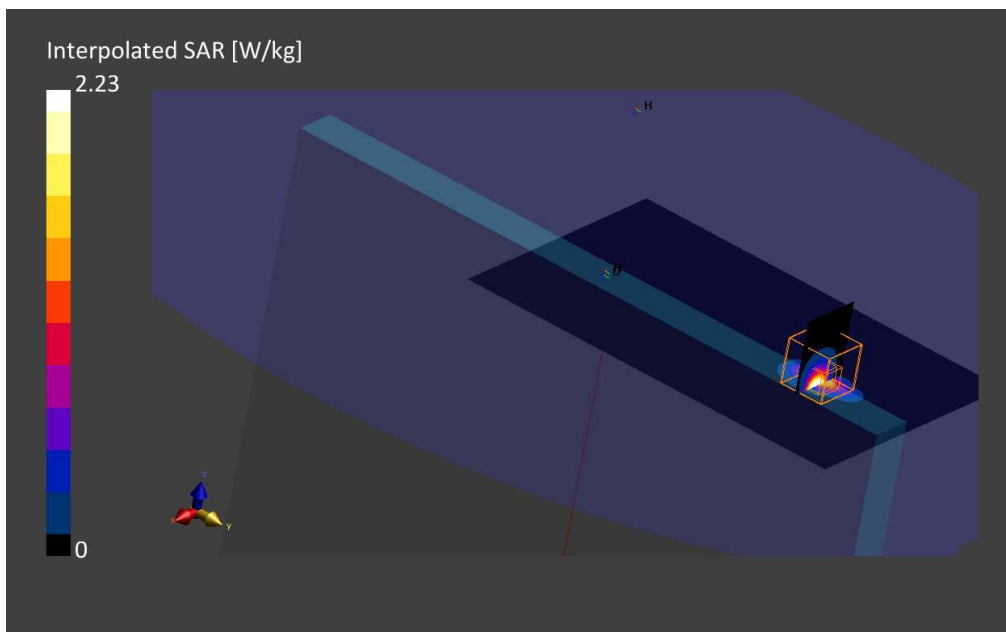
Phantom	TSL, Measured Date	Probe, Calibration Date	DAE, Calibration Date
ELI V8.0 (20deg probe tilt) - 2124	MBBL-600-6000, 2021-Nov-16	EX3DV4 - SN7604, 2021-08-16	DAE4 Sn1628, 2021-08-06

**Scan Setup**

	Area Scan	Zoom Scan
Grid Extents [mm]	120.0 x 192.0	30.0 x 30.0 x 30.0
Grid Steps [mm]	12.0 x 12.0	4.4 x 4.4 x 1.4
Sensor Surface [mm]	3.0	1.4
Graded Grid	Yes	Yes
Grading Ratio	1.5	1.4
MAIA	Confirmed by MAIA	Confirmed by MAIA
Surface Detection	VMS + 6p	VMS + 6p
Scan Method	Measured	Measured

**Measurement Results**

	Area Scan	Zoom Scan
Date	2021-11-16, 23:06	2021-11-16, 23:19
psSAR1g [W/kg]	1.17	1.32
psSAR10g[W/kg]	0.412	0.460
Power Drift [dB]	0.01	0.14
Power Scaling	Disabled	Disabled
Scaling Factor		
TSL Correction [dB]	Positive Only	Positive Only
M2/M1 [%]		72.1
Dist3dBPeak[mm]		5.6



**18.5G NR FR1 Band 25, QPSK - 20MHz, CH381000 – Top Edge**

**Device under Test Properties**

Name, Manufacturer	Dimensions [mm]	S/N	DUT Type
HSN-I46C	225.0 x 315.0 x 17.0	00017609D3	Convertible PC

**Exposure Conditions**

Phantom Section, TSL	Position, Test Distance [mm]	Band	Group, UID	Frequency [MHz], Channel Number	Conversion Factor	TSL Conductivity [S/m]	TSL Permittivity
Flat, MSL	EDGE TOP, 0.00	Band n25	5G NR FR1 FDD, 10931-AAB	1905.0, 381000	8.62	1.51	51.6

**Hardware Setup**

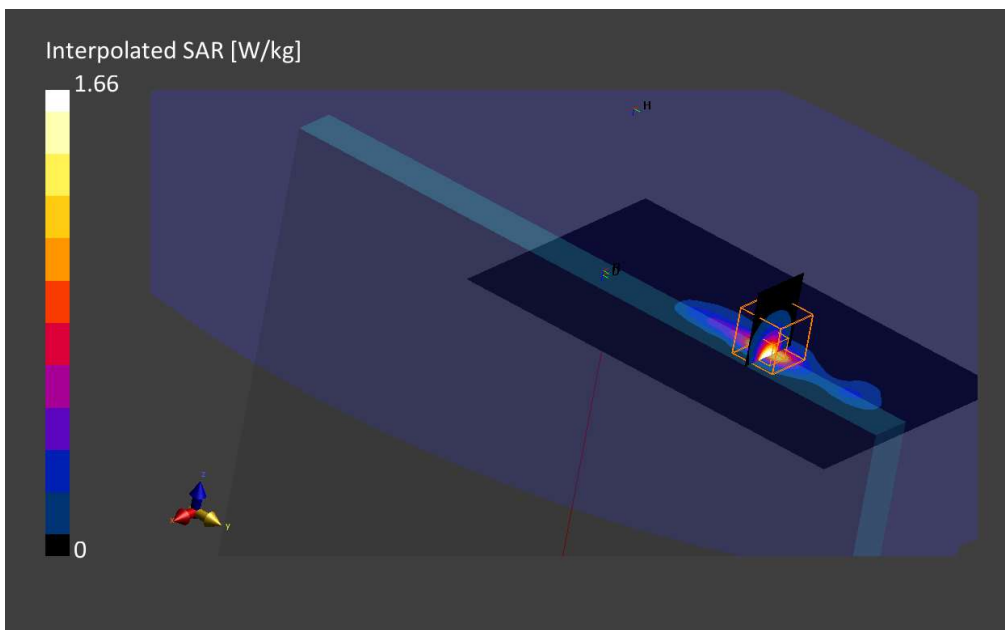
Phantom	TSL, Measured Date	Probe, Calibration Date	DAE, Calibration Date
ELI V8.0 (20deg probe tilt) - 2124	MBBL-600-6000, 2021-Nov-16	EX3DV4 - SN7604, 2021-08-16	DAE4 Sn1628, 2021-08-06

**Scan Setup**

	Area Scan	Zoom Scan
Grid Extents [mm]	120.0 x 192.0	30.0 x 30.0 x 30.0
Grid Steps [mm]	12.0 x 12.0	5.4 x 5.4 x 1.5
Sensor Surface [mm]	3.0	1.4
Graded Grid	Yes	Yes
Grading Ratio	1.5	1.5
MAIA	Confirmed by MAIA	Confirmed by MAIA
Surface Detection	VMS + 6p	VMS + 6p
Scan Method	Measured	Measured

**Measurement Results**

	Area Scan	Zoom Scan
Date	2021-11-16, 20:05	2021-11-16, 20:15
psSAR1g [W/kg]	0.956	1.01
psSAR10g[W/kg]	0.435	0.411
Power Drift [dB]	-0.02	0.01
Power Scaling	Disabled	Disabled
Scaling Factor		
TSL Correction	Positive Only	Positive Only
M2/M1 [%]		76.5
Dist3dBPeak[mm]		5.5



**19.5G NR FR1 Band 30, QPSK - 10MHz, CH462000 – Top Edge**

**Device under Test Properties**

Name, Manufacturer	Dimensions [mm]	S/N	DUT Type
HSN-I46C	225.0 x 315.0 x 17.0	00017609D3	Convertible PC

**Exposure Conditions**

Phantom Section, TSL	Position, Test Distance [mm]	Band	Group, UID	Frequency [MHz], Channel Number	Conversion Factor	TSL Conductivity [S/m]	TSL Permittivity
Flat, MSL	EDGE TOP, 0.00	Band n30	5G NR FR1 FDD, 10929-AAB	2310.0, 462000	8.33	1.81	51.1

**Hardware Setup**

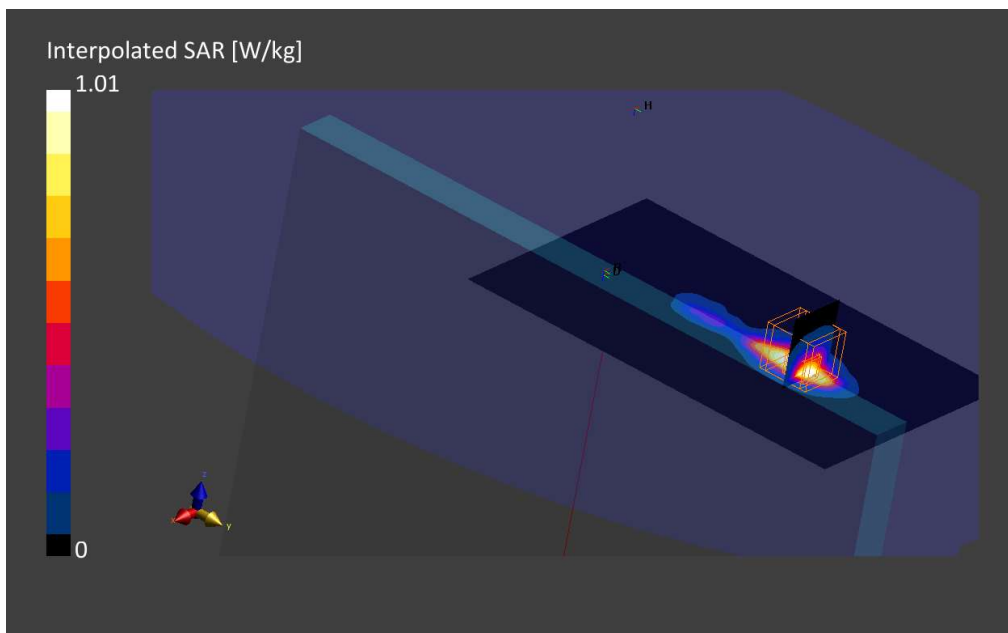
Phantom	TSL, Measured Date	Probe, Calibration Date	DAE, Calibration Date
ELI V8.0 (20deg probe tilt) - 2124	MBBL-600-6000, 2021-Nov-16	EX3DV4 - SN7604, 2021-08-16	DAE4 Sn1628, 2021-08-06

**Scan Setup**

	Area Scan	Zoom Scan
Grid Extents [mm]	120.0 x 192.0	30.0 x 30.0 x 30.0
Grid Steps [mm]	12.0 x 12.0	5.0 x 5.0 x 1.5
Sensor Surface [mm]	3.0	1.4
Graded Grid	Yes	Yes
Grading Ratio	1.5	1.5
MAIA	Confirmed by MAIA	Confirmed by MAIA
Surface Detection	VMS + 6p	VMS + 6p
Scan Method	Measured	Measured

**Measurement Results**

	Area Scan	Zoom Scan
Date	2021-11-17, 20:29	2021-11-17, 20:39
psSAR1g [W/kg]	0.832	0.830
psSAR10g[W/kg]	0.384	0.378
Power Drift [dB]	0.01	0.01
Power Scaling	Disabled	Disabled
Scaling Factor		
[dB]		
TSL Correction	Positive Only	Positive Only
M2/M1 [%]		75.2
Dist3dBPeak[mm]		7.0



**20.5G NR FR1 Band 38, QPSK - 10MHz, CH519000 – Top Edge**

**Device under Test Properties**

Name, Manufacturer	Dimensions [mm]	S/N	DUT Type
HSN-I46C	225.0 x 315.0 x 17.0	00017609D3	Convertible PC

**Exposure Conditions**

Phantom Section, TSL	Position, Test Distance [mm]	Band	Group, UID	Frequency [MHz], Channel Number	Conversion Factor	TSL Conductivity [S/m]	TSL Permittivity
Flat, MSL	EDGE TOP, 0.00	Band n38	5G NR FR1 TDD, 10903-AAB	2595.0, 519000	8.1	2.19	51.5

**Hardware Setup**

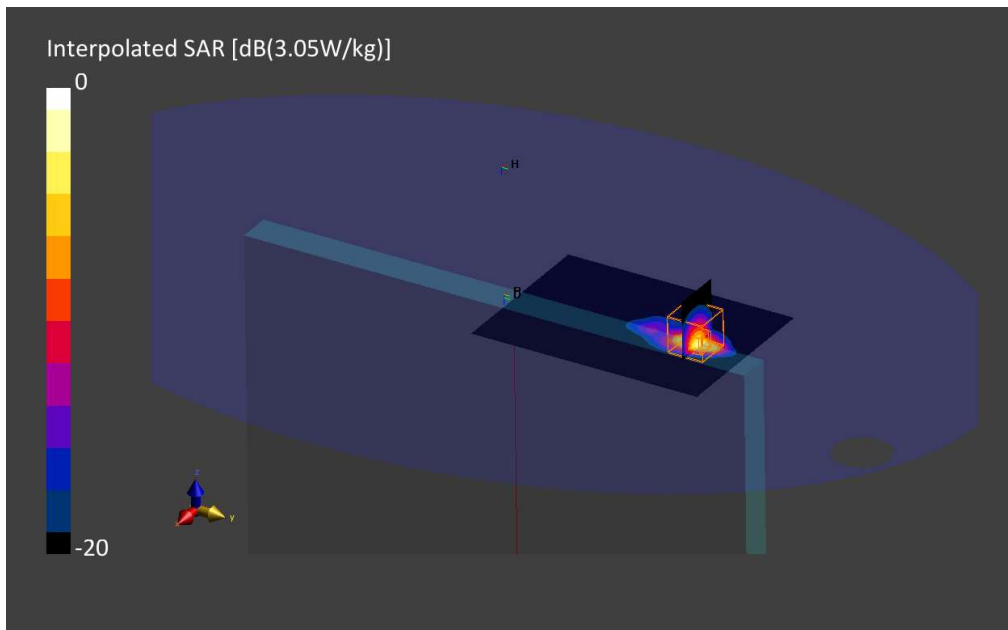
Phantom	TSL, Measured Date	Probe, Calibration Date	DAE, Calibration Date
ELI V8.0 (20deg probe tilt) - 2124	MBBL-600-6000, 2021-Dec-02	EX3DV4 - SN7604, 2021-08-16	DAE4 Sn1628, 2021-08-06

**Scan Setup**

	Area Scan	Zoom Scan
Grid Extents [mm]	120.0 x 192.0	30.0 x 30.0 x 30.0
Grid Steps [mm]	12.0 x 12.0	5.0 x 5.0 x 1.5
Sensor Surface [mm]	3.0	1.4
Graded Grid	Yes	Yes
Grading Ratio	1.5	1.5
MAIA	Confirmed by MAIA	Confirmed by MAIA
Surface Detection	VMS + 6p	VMS + 6p
Scan Method	Measured	Measured

**Measurement Results**

	Area Scan	Zoom Scan
Date	2021-12-03, 12:11	2021-12-03, 12:24
psSAR1g [W/kg]	0.987	1.06
psSAR10g[W/kg]	0.333	0.355
Power Drift [dB]	-0.00	0.05
Power Scaling	Disabled	Disabled
Scaling Factor		
TSL Correction	Positive Only	Positive Only
M2/M1 [%]		72.5
Dist3dBPeak[mm]		6.3



**21.5G NR FR1 Band 41, QPSK - 100MHz, CH518598 – Top Edge**

**Device under Test Properties**

Name, Manufacturer	Dimensions [mm]	S/N	DUT Type
HSN-I46C	225.0 x 315.0 x 17.0	00017609D3	Convertible PC

**Exposure Conditions**

Phantom Section, TSL	Position, Test Distance [mm]	Band	Group, UID	Frequency [MHz], Channel Number	Conversion Factor	TSL Conductivity [S/m]	TSL Permittivity
Flat, MSL	EDGE TOP, 0.00	Band n41	5G NR FR1 TDD, 10973-AAA	2593.0, 518598	8.1	2.19	51.5

**Hardware Setup**

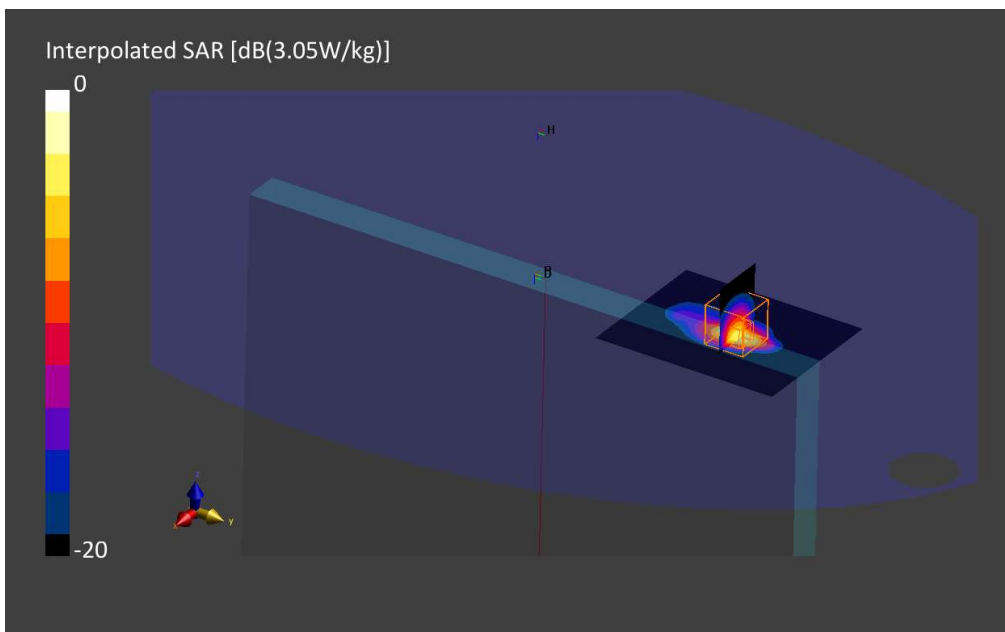
Phantom	TSL, Measured Date	Probe, Calibration Date	DAE, Calibration Date
ELI V8.0 (20deg probe tilt) - 2124	MBBL-600-6000, 2021-Dec-02	EX3DV4 - SN7604, 2021-08-16	DAE4 Sn1628, 2021-08-06

**Scan Setup**

	Area Scan	Zoom Scan
Grid Extents [mm]	120.0 x 192.0	30.0 x 30.0 x 30.0
Grid Steps [mm]	12.0 x 12.0	5.0 x 5.0 x 1.5
Sensor Surface [mm]	3.0	1.4
Graded Grid	Yes	Yes
Grading Ratio	1.5	1.5
MAIA	Confirmed by MAIA	Confirmed by MAIA
Surface Detection	VMS + 6p	VMS + 6p
Scan Method	Measured	Measured

**Measurement Results**

	Area Scan	Zoom Scan
Date	2021-12-03, 19:15	2021-12-03, 19:40
psSAR1g [W/kg]	0.997	1.02
psSAR10g[W/kg]	0.348	0.342
Power Drift [dB]	-0.10	0.01
Power Scaling	Disabled	Disabled
Scaling Factor		
TSL Correction	Positive Only	Positive Only
M2/M1 [%]		71.6
Dist3dBPeak[mm]		6.1



**22.5G NR FR1 Band 66, QPSK - 40MHz, CH349000 – Top Edge**

**Device under Test Properties**

Name, Manufacturer	Dimensions [mm]	S/N	DUT Type
HSN-I46C	225.0 x 315.0 x 17.0	00017609D3	Convertible PC

**Exposure Conditions**

Phantom Section, TSL	Position, Test Distance [mm]	Band	Group, UID	Frequency [MHz], Channel Number	Conversion Factor	TSL Conductivity [S/m]	TSL Permittivity
Flat, MSL	EDGE TOP, 0.00	Band n66	5G NR FR1 FDD, 10934-AAB	1745.0, 349000	9.02	1.40	51.9

**Hardware Setup**

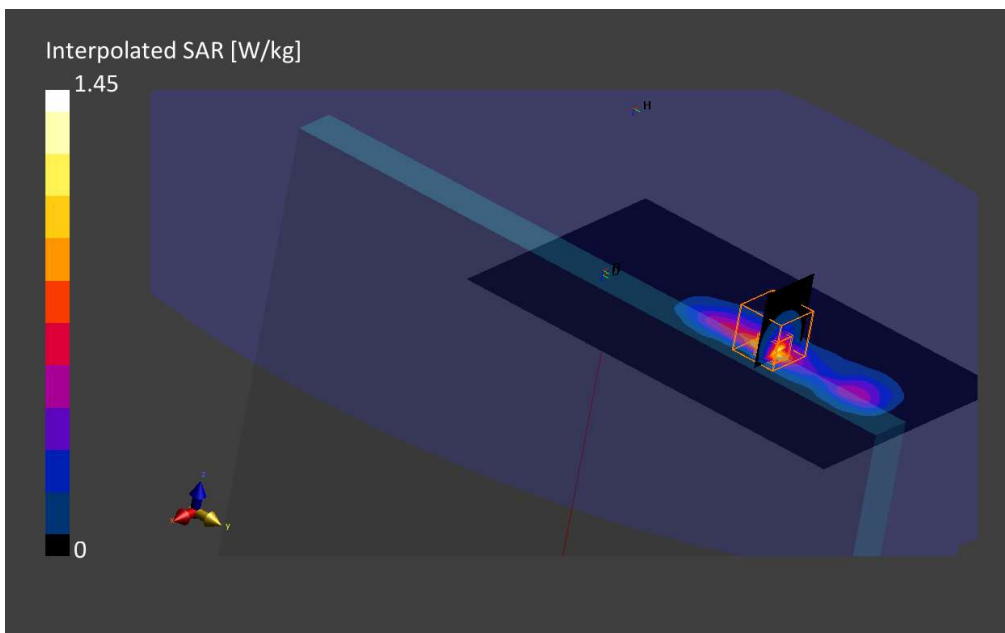
Phantom	TSL, Measured Date	Probe, Calibration Date	DAE, Calibration Date
ELI V8.0 (20deg probe tilt) - 2124	MBBL-600-6000, 2021-Nov-16	EX3DV4 - SN7604, 2021-08-16	DAE4 Sn1628, 2021-08-06

**Scan Setup**

	Area Scan	Zoom Scan
Grid Extents [mm]	120.0 x 192.0	30.0 x 30.0 x 30.0
Grid Steps [mm]	12.0 x 12.0	4.5 x 4.5 x 1.4
Sensor Surface [mm]	3.0	1.4
Graded Grid	Yes	Yes
Grading Ratio	1.5	1.4
MAIA	Confirmed by MAIA	Confirmed by MAIA
Surface Detection	VMS + 6p	VMS + 6p
Scan Method	Measured	Measured

**Measurement Results**

	Area Scan	Zoom Scan
Date	2021-11-17, 20:53	2021-11-17, 21:19
psSAR1g [W/kg]	0.786	0.917
psSAR10g[W/kg]	0.388	0.394
Power Drift [dB]	-0.04	-0.05
Power Scaling	Disabled	Disabled
Scaling Factor		
[dB]		
TSL Correction	Positive Only	Positive Only
M2/M1 [%]		73.0
Dist3dBPeak[mm]		4.5





**23.5G NR FR1 Band 77, QPSK - 100MHz, CH650000 – Top Edge**

**Device under Test Properties**

Name, Manufacturer	Dimensions [mm]	S/N	DUT Type
HSN-I46C	225.0 x 315.0 x 17.0	00017609D3	Convertible PC

**Exposure Conditions**

Phantom Section, TSL	Position, Test Distance [mm]	Band	Group, UID	Frequency [MHz], Channel Number	Conversion Factor	TSL Conductivity [S/m]	TSL Permittivity
Flat, MSL	EDGE TOP, 0.00	Band n77	5G NR FR1 TDD, 10973-AAA	3750.0, 650000	6.13	3.34	47.9

**Hardware Setup**

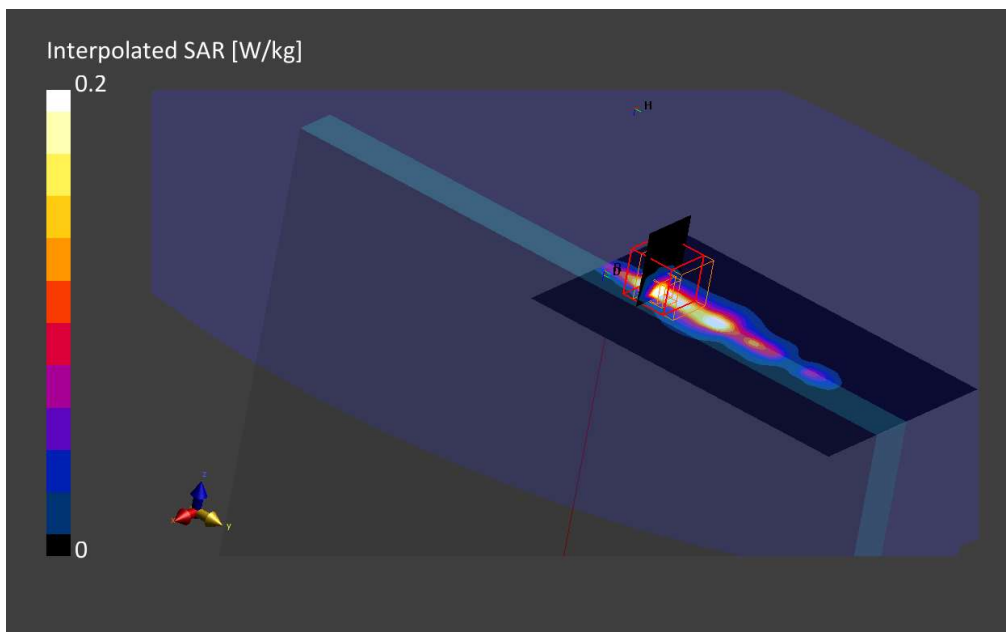
Phantom	TSL, Measured Date	Probe, Calibration Date	DAE, Calibration Date
ELI V8.0 (20deg probe tilt) - 2124	MBBL-600-6000, 2021-Dec-02	EX3DV4 - SN7455, 2021-03-19	DAE4 Sn1517, 2021-03-11

**Scan Setup**

	Area Scan	Zoom Scan
Grid Extents [mm]	100.0 x 160.0	28.0 x 28.0 x 28.0
Grid Steps [mm]	10.0 x 10.0	4.0 x 4.0 x 1.4
Sensor Surface [mm]	3.0	1.4
Graded Grid	Yes	Yes
Grading Ratio	1.5	1.4
MAIA	Confirmed by MAIA	Confirmed by MAIA
Surface Detection	VMS + 6p	VMS + 6p
Scan Method	Measured	Measured

**Measurement Results**

	Area Scan	Zoom Scan
Date	2021-12-02, 17:46	2021-12-02, 17:56
psSAR1g [W/kg]	0.268	0.232
psSAR10g[W/kg]	0.107	0.087
Power Drift [dB]	0.01	0.07
Power Scaling	Disabled	Disabled
Scaling Factor		
TSL Correction [dB]	Positive Only	Positive Only
M2/M1 [%]		74.0
Dist3dBPeak[mm]		4.9



**24.5G NR FR1 Band 78, QPSK - 100MHz, CH650000 – Top Edge**

**Device under Test Properties**

Name, Manufacturer	Dimensions [mm]	S/N	DUT Type
HSN-I46C	225.0 x 315.0 x 17.0	00017609D3	Convertible PC

**Exposure Conditions**

Phantom Section, TSL	Position, Test Distance [mm]	Band	Group, UID	Frequency [MHz], Channel Number	Conversion Factor	TSL Conductivity [S/m]	TSL Permittivity
Flat, MSL	EDGE TOP, 0.00	Band n78	5G NR FR1 TDD, 10917-AAB	3750.0, 650000	6.13	3.34	47.9

**Hardware Setup**

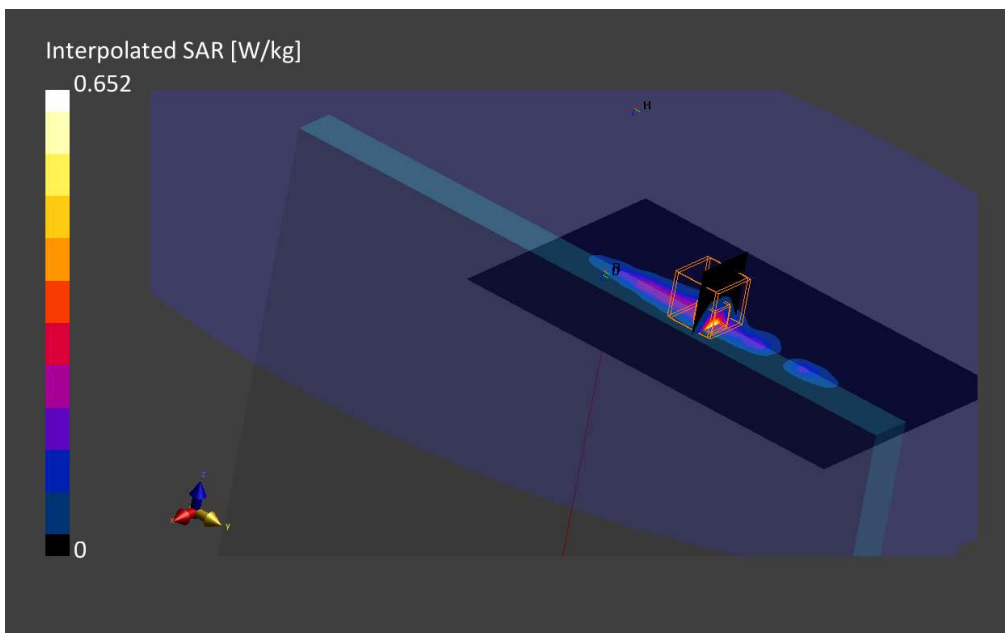
Phantom	TSL, Measured Date	Probe, Calibration Date	DAE, Calibration Date
ELI V8.0 (20deg probe tilt) - 2124	MBBL-600-6000, 2021-Dec-02	EX3DV4 - SN7455, 2021-03-19	DAE4 Sn1517, 2021-03-11

**Scan Setup**

	Area Scan	Zoom Scan
Grid Extents [mm]	120.0 x 192.0	28.0 x 28.0 x 28.0
Grid Steps [mm]	12.0 x 12.0	5.0 x 5.0 x 1.4
Sensor Surface [mm]	3.0	1.4
Graded Grid	Yes	Yes
Grading Ratio	1.5	1.5
MAIA	Confirmed by MAIA	Confirmed by MAIA
Surface Detection	VMS + 6p	VMS + 6p
Scan Method	Measured	Measured

**Measurement Results**

	Area Scan	Zoom Scan
Date	2021-12-02, 18:45	2021-12-02, 18:55
psSAR1g [W/kg]	0.334	0.377
psSAR10g[W/kg]	0.136	0.142
Power Drift [dB]	-0.05	0.07
Power Scaling	Disabled	Disabled
Scaling Factor		
[dB]		
TSL Correction	Positive Only	Positive Only
M2/M1 [%]		74.9
Dist3dBPeak[mm]		6.2



**25. System Check Body Liquid 750MHz**

**Device under Test Properties**

Name, Manufacturer	Dimensions [mm]	S/N	DUT Type
Dipole 750MHz, SPEAG	50.0 x 10.0 x 8.0	1136	Validation Dipole

**Exposure Conditions**

Phantom Section, TSL	Position, Test Distance [mm]	Band	Group, UID	Frequency [MHz], Channel Number	Conversion Factor	TSL Conductivity [S/m]	TSL Permittivity
Flat, MSL	,		0--	750.0, 0	10.05	0.94	53.5

**Hardware Setup**

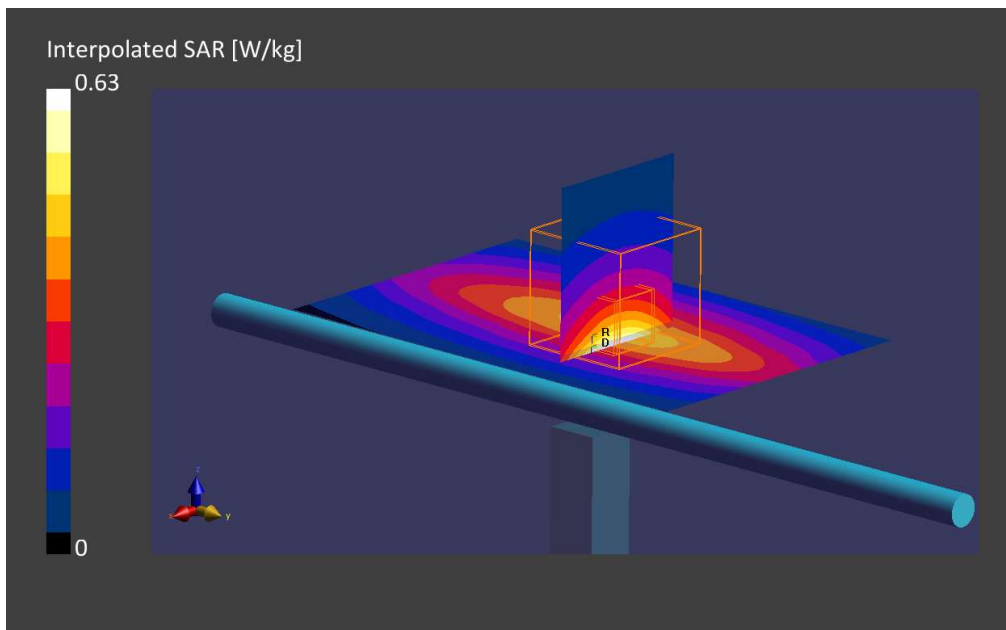
Phantom	TSL, Measured Date	Probe, Calibration Date	DAE, Calibration Date
ELI V8.0 (20deg probe tilt)	MABL-600-6000, 2021-Nov-22	EX3DV4 - SN3978, 2021-05-21	DAE4ip Sn1658, 2021-08-04

**Scan Setup**

	Area Scan	Zoom Scan
Grid Extents [mm]	60.0 x 90.0	30.0 x 30.0 x 30.0
Grid Steps [mm]	15.0 x 15.0	6.0 x 6.0 x 1.5
Sensor Surface [mm]	3.0	1.4
Graded Grid	Yes	Yes
Grading Ratio	1.5	1.5
MAIA	Confirmed by MAIA	Confirmed by MAIA
Surface Detection	VMS + 6p	VMS + 6p
Scan Method	Measured	Measured

**Measurement Results**

	Area Scan	Zoom Scan
Date	2021-11-23, 13:48	2021-11-23, 13:53
psSAR1g [W/kg]	0.392	0.402
psSAR10g[W/kg]	0.260	0.266
Power Drift [dB]	0.00	0.02
Power Scaling	Disabled	Disabled
Scaling Factor		
TSL Correction [dB]	Positive Only	Positive Only
M2/M1 [%]		86.3
Dist3dBPeak[mm]		19.0



**26. System Check Body Liquid 835MHz - 2021-11-23**

**Device under Test Properties**

Name, Manufacturer	Dimensions [mm]	Serial Number	DUT Type
Dipole 835MHz, SPEAG	50.0 x 10.0 x 10.0	4d192	Validation Dipole

**Exposure Conditions**

Phantom Section, TSL	Position, Test Distance [mm]	Band	Group, UID	Frequency [MHz], Channel Number	Conversion Factor	TSL Conductivity [S/m]	TSL Permittivity
Flat, MSL	,		0--	835.0, 0	9.79	0.98	53.3

**Hardware Setup**

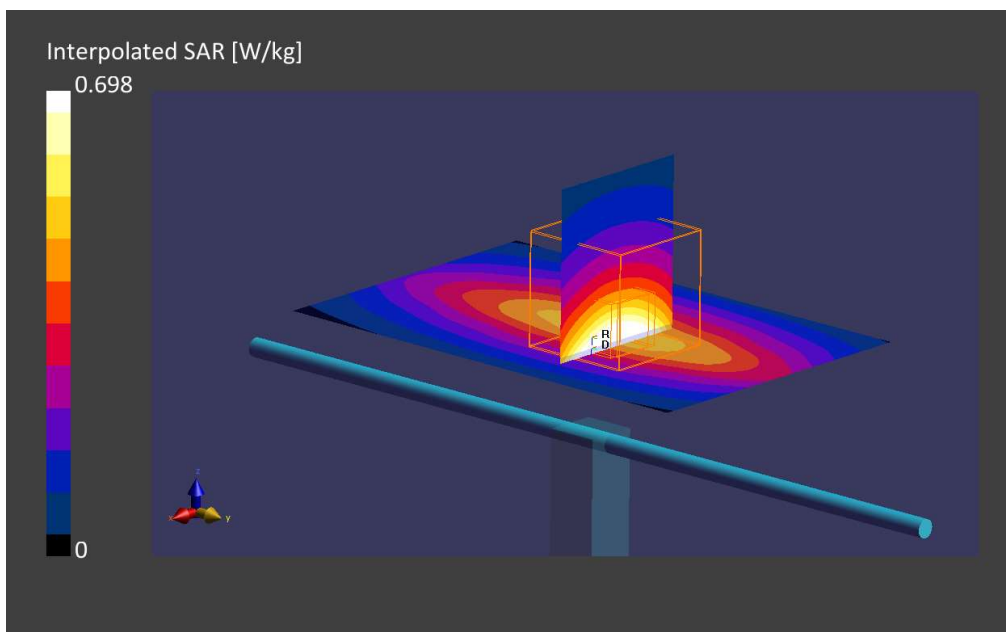
Phantom	TSL, Measured Date	Probe, Calibration Date	DAE, Calibration Date
ELI V8.0 (20deg probe tilt)	MBBL-600-6000, 2021-Nov-22	EX3DV4 - SN3978, 2021-05-21	DAE4ip Sn1658, 2021-08-04

**Scan Setup**

	Area Scan	Zoom Scan
Grid Extents [mm]	60.0 x 90.0	30.0 x 30.0 x 30.0
Grid Steps [mm]	15.0 x 15.0	6.0 x 6.0 x 1.5
Sensor Surface [mm]	3.0	1.4
Graded Grid	Yes	Yes
Grading Ratio	1.5	1.5
MAIA	Confirmed by MAIA	Confirmed by MAIA
Surface Detection	VMS + 6p	VMS + 6p
Scan Method	Measured	Measured

**Measurement Results**

	Area Scan	Zoom Scan
Date	2021-11-23, 13:59	2021-11-23, 14:04
psSAR1g [W/kg]	0.446	0.455
psSAR10g[W/kg]	0.293	0.300
Power Drift [dB]	0.01	0.01
Power Scaling	Disabled	Disabled
Scaling Factor [dB]		
TSL Correction	Positive Only	Positive Only
M2/M1 [%]		87.5
Dist3dBPeak[mm]		18.0



**27. System Check Body Liquid 835MHz - 2021-11-17**

**Device under Test Properties**

Name, Manufacturer	Dimensions [mm]	Serial Number	DUT Type
Dipole 835MHz, SPEAG	50.0 x 10.0 x 10.0	4d192	Validation Dipole

**Exposure Conditions**

Phantom Section, TSL	Position, Test Distance [mm]	Band	Group, UID	Frequency [MHz], Channel Number	Conversion Factor	TSL Conductivity [S/m]	TSL Permittivity
Flat, MSL	,		0--	835.0, 0	10.82	0.93	53.2

**Hardware Setup**

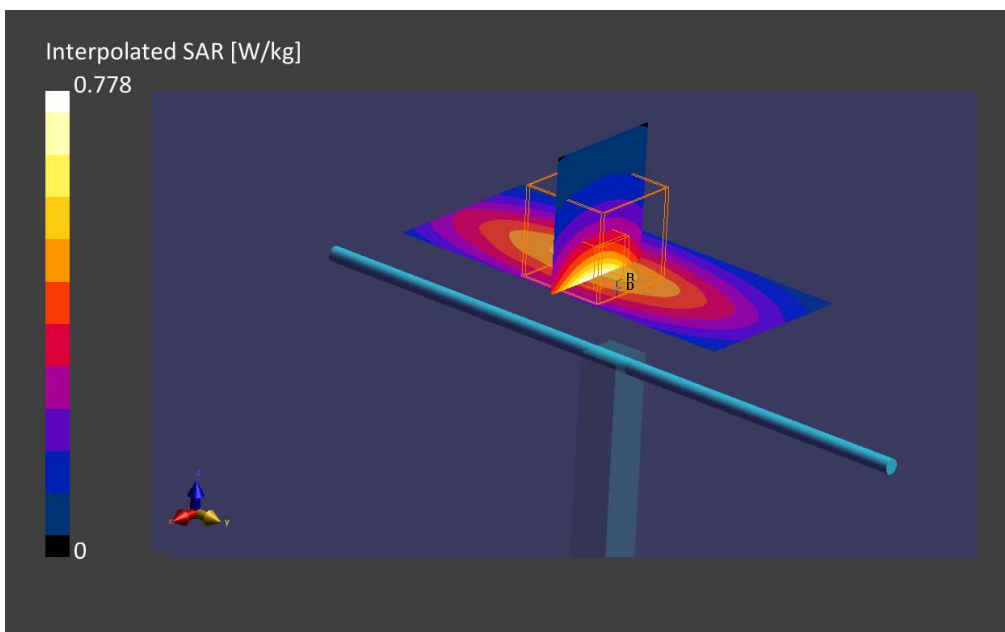
Phantom	TSL, Measured Date	Probe, Calibration Date	DAE, Calibration Date
ELI V8.0 (20deg probe tilt) - 2124	MBBL-600-6000, 2021-Nov-16	EX3DV4 - SN7604, 2021-08-16	DAE4 Sn1628, 2021-08-06

**Scan Setup**

	Area Scan	Zoom Scan
Grid Extents [mm]	40.0 x 90.0	30.0 x 30.0 x 30.0
Grid Steps [mm]	10.0 x 15.0	6.0 x 6.0 x 1.5
Sensor Surface [mm]	3.0	1.4
Graded Grid	Yes	Yes
Grading Ratio	1.5	1.5
MAIA	Confirmed by MAIA	Confirmed by MAIA
Surface Detection	VMS + 6p	VMS + 6p
Scan Method	Measured	Measured

**Measurement Results**

	Area Scan	Zoom Scan
Date	2021-11-17, 18:04	2021-11-17, 18:10
psSAR1g [W/kg]	0.475	0.489
psSAR10g[W/kg]	0.313	0.320
Power Drift [dB]	-0.10	-0.04
Power Scaling	Disabled	Disabled
Scaling Factor		
[dB]		
TSL Correction	Positive Only	Positive Only
M2/M1 [%]		85.1
Dist 3d Peak[mm]		16.3



**28. System Check Body Liquid 1750MHz – 2021-11-25**

**Device under Test Properties**

Name, Manufacturer	Dimensions [mm]	Serial Number	DUT Type
Dipole 1750MHz, SPEAG	50.0 x 10.0 x 8.0	1133	Validation Dipole

**Exposure Conditions**

Phantom Section, TSL	Position, Test Distance [mm]	Band	Group, UID	Frequency [MHz], Channel Number	Conversion Factor	TSL Conductivity [S/m]	TSL Permittivity
Flat, MSL	,	,	0--	1750.0, 0	8.26	1.48	51.2

**Hardware Setup**

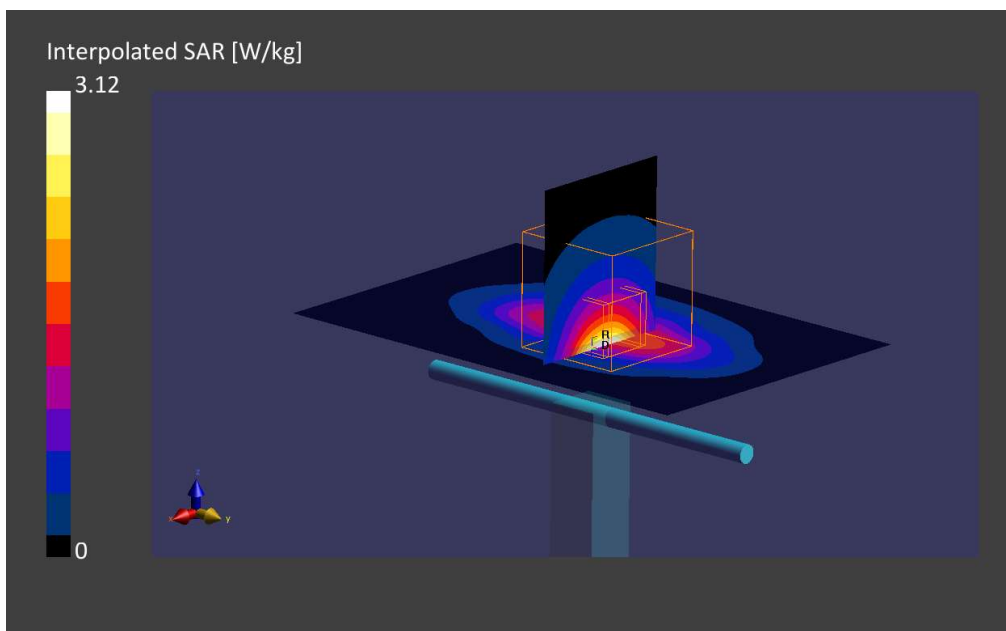
Phantom	TSL, Measured Date	Probe, Calibration Date	DAE, Calibration Date
ELI V8.0 (20deg probe tilt)	MABL-600-6000, 2021-Nov-22	EX3DV4 - SN3978, 2021-05-21	DAE4ip Sn1658, 2021-08-04

**Scan Setup**

	Area Scan	Zoom Scan
Grid Extents [mm]	60.0 x 90.0	30.0 x 30.0 x 30.0
Grid Steps [mm]	15.0 x 15.0	6.0 x 6.0 x 1.5
Sensor Surface [mm]	3.0	1.4
Graded Grid	Yes	Yes
Grading Ratio	1.5	1.5
MAIA	Confirmed by MAIA	Confirmed by MAIA
Surface Detection	VMS + 6p	VMS + 6p
Scan Method	Measured	Measured

**Measurement Results**

	Area Scan	Zoom Scan
Date	2021-11-25, 16:56	2021-11-25, 17:01
psSAR1g [W/kg]	1.63	1.68
psSAR10g[W/kg]	0.850	0.903
Power Drift [dB]	-0.03	0.03
Power Scaling	Disabled	Disabled
Scaling Factor [dB]		
TSL Correction	Positive Only	Positive Only
M2/M1 [%]		82.6
Dist3dBPeak[mm]		9.9



**29. System Check Body Liquid 1750MHz – 2021-11-24**

**Device under Test Properties**

Name, Manufacturer	Dimensions [mm]	S/N	DUT Type
Dipole 1750MHz, SPEAG	50.0 x 10.0 x 17.0	1133	Validation Dipole

**Exposure Conditions**

Phantom Section, TSL	Position, Test Distance [mm]	Band	Group, UID	Frequency [MHz], Channel Number	Conversion Factor	TSL Conductivity [S/m]	TSL Permittivity
Flat, MSL	,		0--	1750.0, 0	8.26	1.48	51.2

**Hardware Setup**

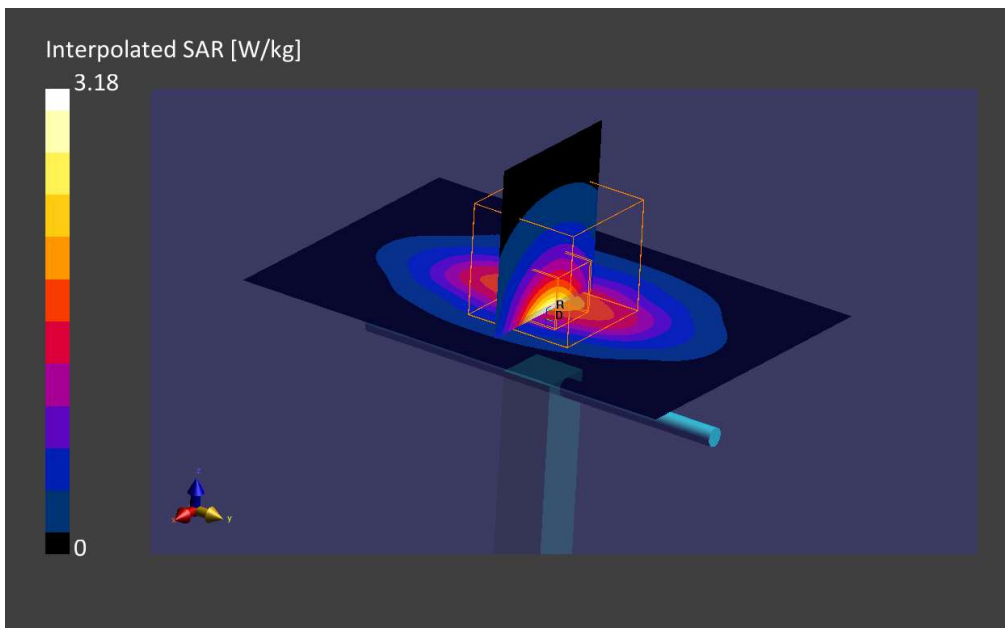
Phantom	TSL, Measured Date	Probe, Calibration Date	DAE, Calibration Date
ELI V8.0 (20deg probe tilt)	MABL-600-6000, 2021-Nov-22	EX3DV4 - SN3978, 2021-05-21	DAE4ip Sn1658, 2021-08-04

**Scan Setup**

	Area Scan	Zoom Scan
Grid Extents [mm]	60.0 x 90.0	30.0 x 30.0 x 30.0
Grid Steps [mm]	15.0 x 15.0	6.0 x 6.0 x 1.5
Sensor Surface [mm]	3.0	1.4
Graded Grid	Yes	Yes
Grading Ratio	1.5	1.5
MAIA	Confirmed by MAIA	Confirmed by MAIA
Surface Detection	VMS + 6p	VMS + 6p
Scan Method	Measured	Measured

**Measurement Results**

	Area Scan	Zoom Scan
Date	2021-11-24, 17:48	2021-11-24, 17:53
psSAR1g [W/kg]	1.70	1.71
psSAR10g[W/kg]	0.890	0.920
Power Drift [dB]	0.01	0.02
Power Scaling	Disabled	Disabled
Scaling Factor		
TSL Correction	Positive Only	Positive Only
M2/M1 [%]		82.0
Dist3dBPeak[mm]		9.6



**30. System Check Body Liquid 1750MHz – 2021-11-17**

**Device under Test Properties**

Name, Manufacturer	Dimensions [mm]	S/N	DUT Type
Dipole 1750MHz, SPEAG	50.0 x 10.0 x 17.0	1133	Validation Dipole

**Exposure Conditions**

Phantom Section, TSL	Position, Test Distance [mm]	Band	Group, UID	Frequency [MHz], Channel Number	Conversion Factor	TSL Conductivity [S/m]	TSL Permittivity
Flat, MSL	,		0--	1750.0, 0	9.02	1.41	51.9

**Hardware Setup**

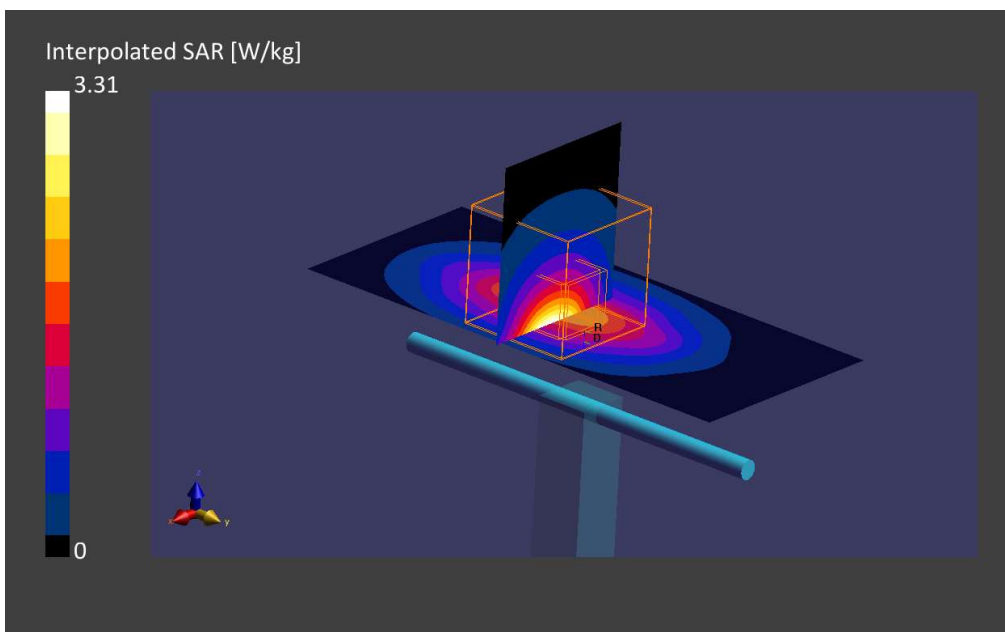
Phantom	TSL, Measured Date	Probe, Calibration Date	DAE, Calibration Date
ELI V8.0 (20deg probe tilt) - 2124	MBBL-600-6000, 2021-Nov-16	EX3DV4 - SN7604, 2021-08-16	DAE4 Sn1628, 2021-08-06

**Scan Setup**

	Area Scan	Zoom Scan
Grid Extents [mm]	40.0 x 90.0	30.0 x 30.0 x 30.0
Grid Steps [mm]	10.0 x 15.0	6.0 x 6.0 x 1.5
Sensor Surface [mm]	3.0	1.4
Graded Grid	Yes	Yes
Grading Ratio	1.5	1.5
MAIA	Confirmed by MAIA	Confirmed by MAIA
Surface Detection	VMS + 6p	VMS + 6p
Scan Method	Measured	Measured

**Measurement Results**

	Area Scan	Zoom Scan
Date	2021-11-17, 16:58	2021-11-17, 17:04
psSAR1g [W/kg]	1.80	1.79
psSAR10g[W/kg]	0.951	0.952
Power Drift [dB]	-0.07	-0.08
Power Scaling	Disabled	Disabled
Scaling Factor		
TSL Correction [dB]	Positive Only	Positive Only
M2/M1 [%]		81.7
Dist3dBPeak[mm]		9.9





**31. System Check Body Liquid 1900MHz - 2021-11-24**

**Device under Test Properties**

Name, Manufacturer	Dimensions [mm]	S/N	DUT Type
Dipole 1900MHz, SPEAG	50.0 x 10.0 x 8.0	5d197	Validation Dipole

**Exposure Conditions**

Phantom Section, TSL	Position, Test Distance [mm]	Band	Group, UID	Frequency [MHz], Channel Number	Conversion Factor	TSL Conductivity [S/m]	TSL Permittivity
Flat, MSL	,		0--	1900.0, 0	7.97	1.58	51.0

**Hardware Setup**

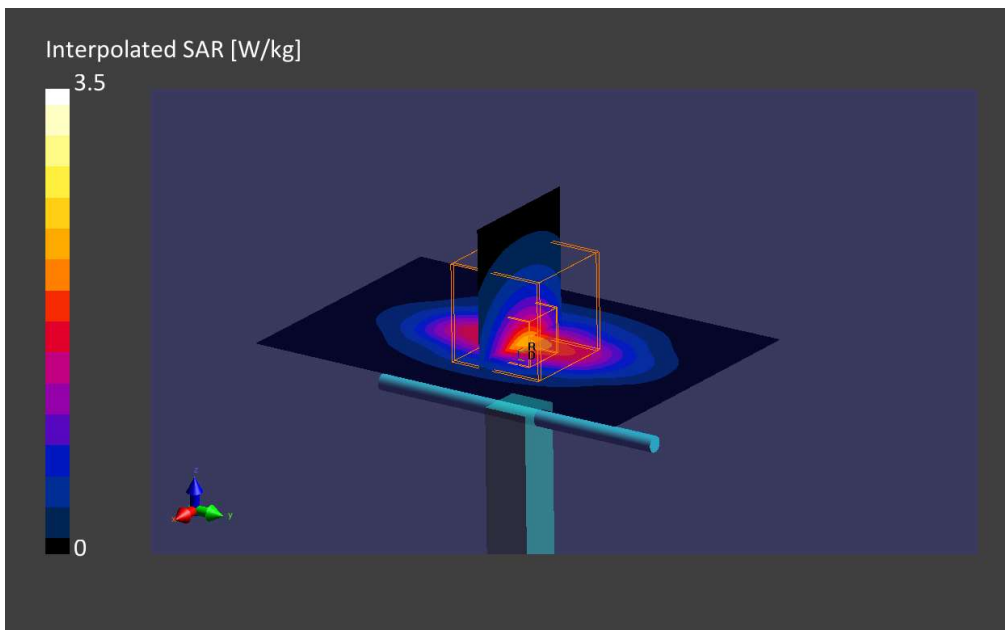
Phantom	TSL, Measured Date	Probe, Calibration Date	DAE, Calibration Date
ELI V8.0 (20deg probe tilt)	MABL-600-6000, 2021-Nov-22	EX3DV4 - SN3978, 2021-05-21	DAE4 Sn1429, 2021-05-11

**Scan Setup**

	Area Scan	Zoom Scan
Grid Extents [mm]	60.0 x 90.0	30.0 x 30.0 x 30.0
Grid Steps [mm]	15.0 x 15.0	6.0 x 6.0 x 1.5
Sensor Surface [mm]	3.0	1.4
Graded Grid	Yes	Yes
Grading Ratio	1.5	1.5
MAIA	Confirmed by MAIA	Confirmed by MAIA
Surface Detection	VMS + 6p	VMS + 6p
Scan Method	Measured	Measured

**Measurement Results**

	Area Scan	Zoom Scan
Date	2021-11-24, 17:36	2021-11-24, 17:41
psSAR1g [W/kg]	1.79	1.89
psSAR10g[W/kg]	0.910	0.996
Power Drift [dB]	0.01	-0.02
Power Scaling	Disabled	Disabled
Scaling Factor		
TSL Correction [dB]	Positive Only	Positive Only
M2/M1 [%]		82.9
Dist3dBPeak[mm]		9.6



### 32. System Check Body Liquid 1900MHz - 2021-11-25

**Device under Test Properties**

Name, Manufacturer	Dimensions [mm]	S/N	DUT Type
Dipole 1900MHz, SPEAG	50.0 x 10.0 x 8.0	5d197	Validation Dipole

**Exposure Conditions**

Phantom Section, TSL	Position, Test Distance [mm]	Band	Group, UID	Frequency [MHz], Channel Number	Conversion Factor	TSL Conductivity [S/m]	TSL Permittivity
Flat, MSL	,		0--	1900.0, 0	7.97	1.51	51.0

**Hardware Setup**

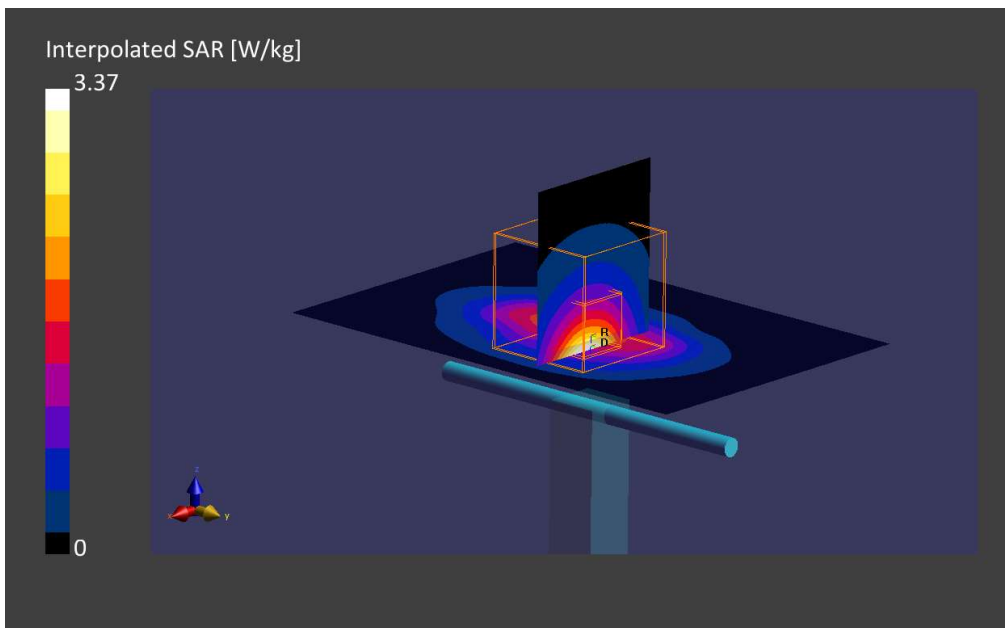
Phantom	TSL, Measured Date	Probe, Calibration Date	DAE, Calibration Date
ELI V8.0 (20deg probe tilt)	MABL-600-6000, 2021-Nov-25	EX3DV4 - SN3978, 2021-05-21	DAE4 Sn1429, 2021-05-11

**Scan Setup**

	Area Scan	Zoom Scan
Grid Extents [mm]	60.0 x 90.0	30.0 x 30.0 x 30.0
Grid Steps [mm]	15.0 x 15.0	6.0 x 6.0 x 1.5
Sensor Surface [mm]	3.0	1.4
Graded Grid	Yes	Yes
Grading Ratio	1.5	1.5
MAIA	Confirmed by MAIA	Confirmed by MAIA
Surface Detection	VMS + 6p	VMS + 6p
Scan Method	Measured	Measured

**Measurement Results**

	Area Scan	Zoom Scan
Date	2021-11-25, 16:24	2021-11-25, 16:29
psSAR1g [W/kg]	1.74	1.83
psSAR10g[W/kg]	0.898	0.969
Power Drift [dB]	-0.01	0.02
Power Scaling	Disabled	Disabled
Scaling Factor		
TSL Correction [dB]	Positive Only	Positive Only
M2/M1 [%]		82.6
Dist3dBPeak[mm]		9.6



### 33. System Check Body Liquid 1900MHz - 2021-11-16

**Device under Test Properties**

Name, Manufacturer	Dimensions [mm]	S/N	DUT Type
Dipole 1900MHz, SPEAG	50.0 x 10.0 x 8.0	5d197	Validation Dipole

**Exposure Conditions**

Phantom Section, TSL	Position, Test Distance [mm]	Band	Group, UID	Frequency [MHz], Channel Number	Conversion Factor	TSL Conductivity [S/m]	TSL Permittivity
Flat, MSL	,		0--	1900.0, 0	8.62	1.50	51.6

**Hardware Setup**

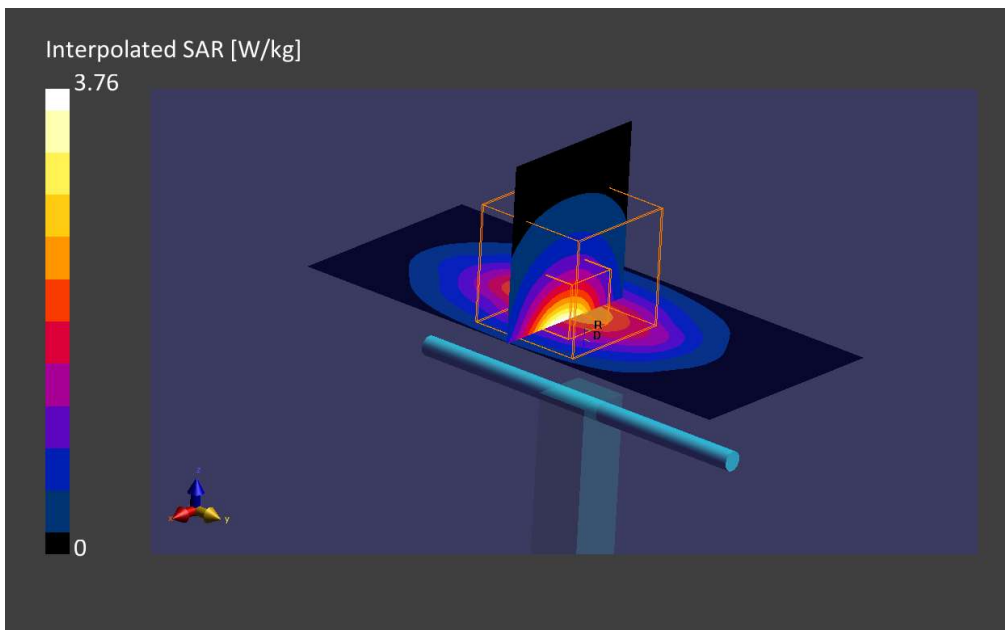
Phantom	TSL, Measured Date	Probe, Calibration Date	DAE, Calibration Date
ELI V8.0 (20deg probe tilt) - 2124	MABL-600-6000, 2021-Nov-16	EX3DV4 - SN7604, 2021-08-16	DAE4 Sn1628, 2021-08-06

**Scan Setup**

	Area Scan	Zoom Scan
Grid Extents [mm]	40.0 x 90.0	30.0 x 30.0 x 30.0
Grid Steps [mm]	10.0 x 15.0	6.0 x 6.0 x 1.5
Sensor Surface [mm]	3.0	1.4
Graded Grid	Yes	Yes
Grading Ratio	1.5	1.5
MAIA	Confirmed by MAIA	Confirmed by MAIA
Surface Detection	VMS + 6p	VMS + 6p
Scan Method	Measured	Measured

**Measurement Results**

	Area Scan	Zoom Scan
Date	2021-11-16, 17:32	2021-11-16, 17:38
psSAR1g [W/kg]	2.02	2.01
psSAR10g[W/kg]	1.03	1.05
Power Drift [dB]	-0.03	-0.04
Power Scaling	Disabled	Disabled
Scaling Factor		
TSL Correction	Positive Only	Positive Only
M2/M1 [%]		81.9
Dist3dBPeak[mm]		9.6



### 34. System Check Body Liquid 2300MHz - 2021-11-30

**Device under Test Properties**

Name, Manufacturer	Dimensions [mm]	Serial Number	DUT Type
D2300MHZ, SPEAG	50.0 x 10.0 x 8.0	1046	Validation Dipole

**Exposure Conditions**

Phantom Section, TSL	Position, Test Distance [mm]	Band	Group, UID	Frequency [MHz], Channel Number	Conversion Factor	TSL Conductivity [S/m]	TSL Permittivity
Flat, MSL	,		0--	2300.0, 0	7.82	1.84	50.9

**Hardware Setup**

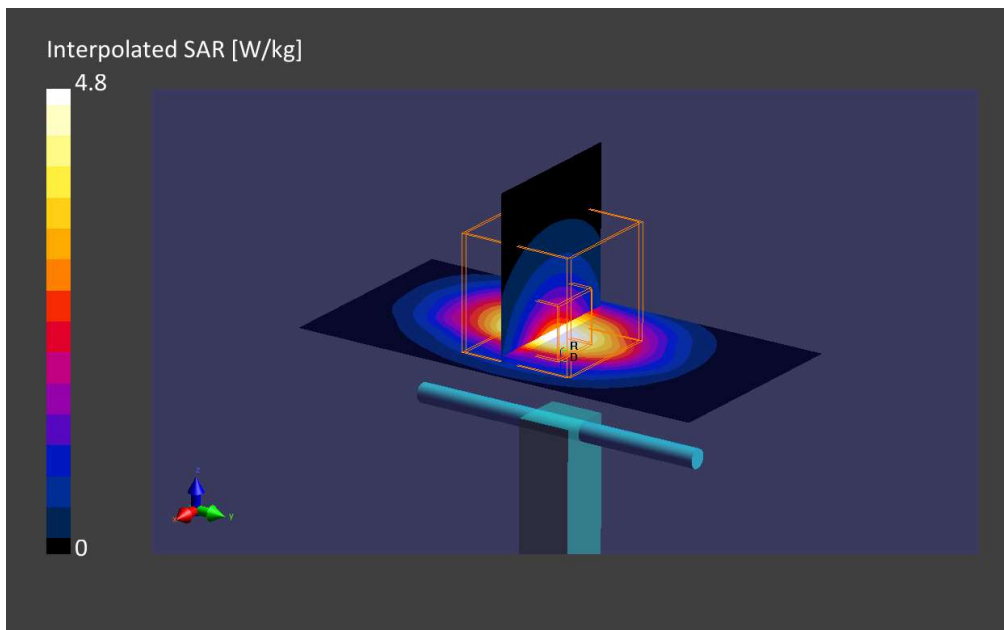
Phantom	TSL, Measured Date	Probe, Calibration Date	DAE, Calibration Date
ELI V8.0 (20deg probe tilt)	MABL-600-6000, 2021-Nov-29	EX3DV4 - SN3978, 2021-05-21	DAE4ip Sn1658, 2021-08-04

**Scan Setup**

	Area Scan	Zoom Scan
Grid Extents [mm]	40.0 x 80.0	30.0 x 30.0 x 30.0
Grid Steps [mm]	10.0 x 10.0	5.0 x 5.0 x 1.5
Sensor Surface [mm]	3.0	1.4
Graded Grid	Yes	Yes
Grading Ratio	1.5	1.5
MAIA	Confirmed by MAIA	Confirmed by MAIA
Surface Detection	VMS + 6p	VMS + 6p
Scan Method	Measured	Measured

**Measurement Results**

	Area Scan	Zoom Scan
Date	2021-11-30, 19:35	2021-11-30, 19:44
psSAR1g [W/kg]	2.12	2.36
psSAR10g[W/kg]	1.04	1.13
Power Drift [dB]	-0.04	0.00
Power Scaling	Disabled	Disabled
Scaling Factor [dB]		
TSL Correction	Positive Only	Positive Only
M2/M1 [%]		80.3
Dist3dBPeak[mm]		8.2



**35. System Check Body Liquid 2300MHz - 2021-11-17**

**Device under Test Properties**

Name, Manufacturer	Dimensions [mm]	Serial Number	DUT Type
D2300MHZ, SPEAG	50.0 x 10.0 x 8.0	1046	Validation Dipole

**Exposure Conditions**

Phantom Section, TSL	Position, Test Distance [mm]	Band	Group, UID	Frequency [MHz], Channel Number	Conversion Factor	TSL Conductivity [S/m]	TSL Permittivity
Flat, MSL	,		0--	2300.0, 0	8.33	1.81	51.1

**Hardware Setup**

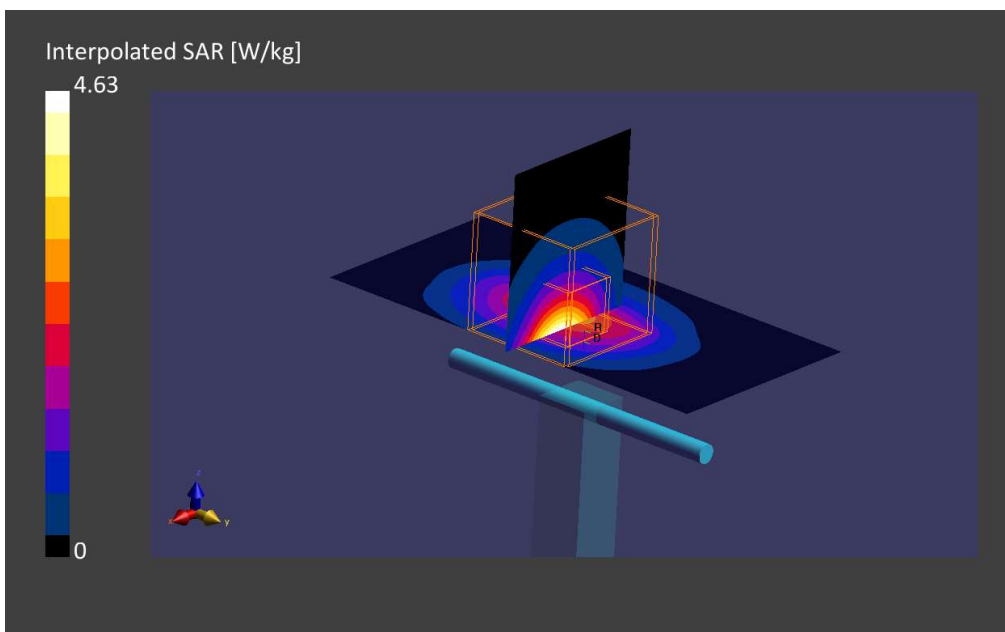
Phantom	TSL, Measured Date	Probe, Calibration Date	DAE, Calibration Date
ELI V8.0 (20deg probe tilt) - 2124	MBBL-600-6000, 2021-Nov-16	EX3DV4 - SN7604, 2021-08-16	DAE4 Sn1628, 2021-08-06

**Scan Setup**

	Area Scan	Zoom Scan
Grid Extents [mm]	40.0 x 80.0	30.0 x 30.0 x 30.0
Grid Steps [mm]	10.0 x 10.0	5.0 x 5.0 x 1.5
Sensor Surface [mm]	3.0	1.4
Graded Grid	Yes	Yes
Grading Ratio	1.5	1.5
MAIA	N/A	N/A
Surface Detection	VMS + 6p	VMS + 6p
Scan Method	Measured	Measured

**Measurement Results**

	Area Scan	Zoom Scan
Date	2021-11-17, 18:24	2021-11-17, 18:32
psSAR1g [W/kg]	2.28	2.35
psSAR10g[W/kg]	1.10	1.11
Power Drift [dB]	-0.03	0.00
Power Scaling	Disabled	Disabled
Scaling Factor [dB]		
TSL Correction	Positive Only	Positive Only
M2/M1 [%]		82.3
Dist3dBPeak[mm]		9.0



**36. System Check Body Liquid 2600MHz – 2021-11-22**

**Device under Test Properties**

Name, Manufacturer	Dimensions [mm]	Serial Number	DUT Type
D2600MHz, SPEAG	50.0 x 10.0 x 8.0	1100	Validation Dipole

**Exposure Conditions**

Phantom Section, TSL	Position, Test Distance [mm]	Band	Group, UID	Frequency [MHz], Channel Number	Conversion Factor	TSL Conductivity [S/m]	TSL Permittivity
Flat, MSL	,		0--	2600.0, 0	7.3	2.19	50.1

**Hardware Setup**

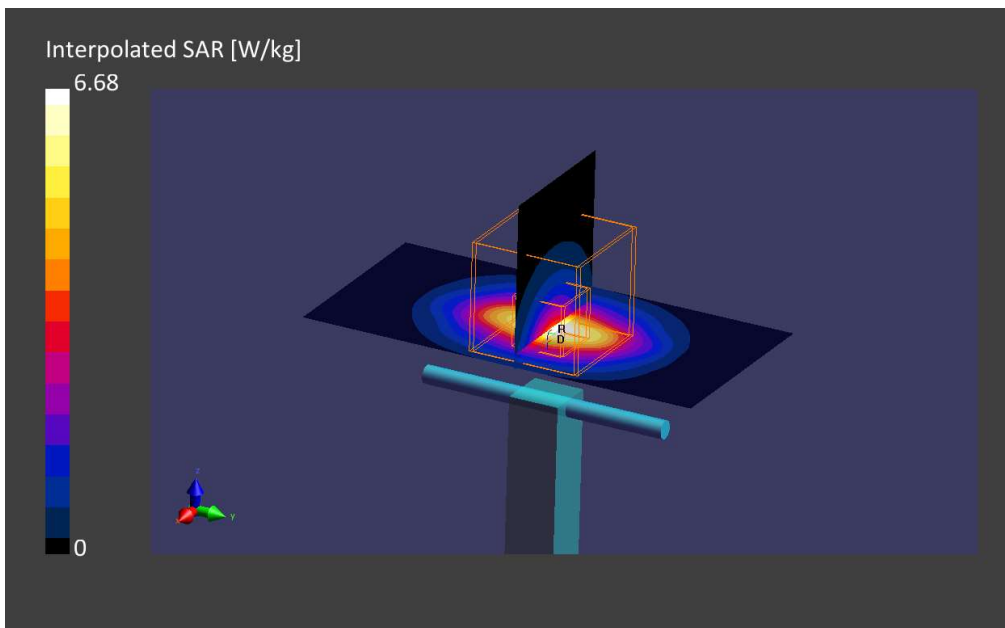
Phantom	TSL, Measured Date	Probe, Calibration Date	DAE, Calibration Date
ELI V8.0 (20deg probe tilt)	MABL-600-6000, 2021-Nov-22	EX3DV4 - SN3978, 2021-05-21	DAE4ip Sn1658, 2021-08-04

**Scan Setup**

	Area Scan	Zoom Scan
Grid Extents [mm]	40.0 x 80.0	30.0 x 30.0 x 30.0
Grid Steps [mm]	10.0 x 10.0	5.0 x 5.0 x 1.5
Sensor Surface [mm]	3.0	1.4
Graded Grid	Yes	Yes
Grading Ratio	1.5	1.5
MAIA	Confirmed by MAIA	Confirmed by MAIA
Surface Detection	All points	All points
Scan Method	Measured	Measured

**Measurement Results**

	Area Scan	Zoom Scan
Date	2021-11-22, 17:37	2021-11-22, 17:43
psSAR1g [W/kg]	2.85	2.93
psSAR10g[W/kg]	1.23	1.28
Power Drift [dB]	0.01	0.04
Power Scaling	Disabled	Disabled
Scaling Factor		
[dB]		
TSL Correction	Positive Only	Positive Only
M2/M1 [%]		76.8
Dist3dBPeak[mm]		8.0



**37. System Check Body Liquid 2600MHz – 2021-11-23**

**Device under Test Properties**

Name, Manufacturer	Dimensions [mm]	Serial Number	DUT Type
D2600MHz, SPEAG	50.0 x 10.0 x 8.0	1100	Validation Dipole

**Exposure Conditions**

Phantom Section, TSL	Position, Test Distance [mm]	Band	Group, UID	Frequency [MHz], Channel Number	Conversion Factor	TSL Conductivity [S/m]	TSL Permittivity
Flat, MSL	,		0--	2600.0, 0	7.3	2.19	50.1

**Hardware Setup**

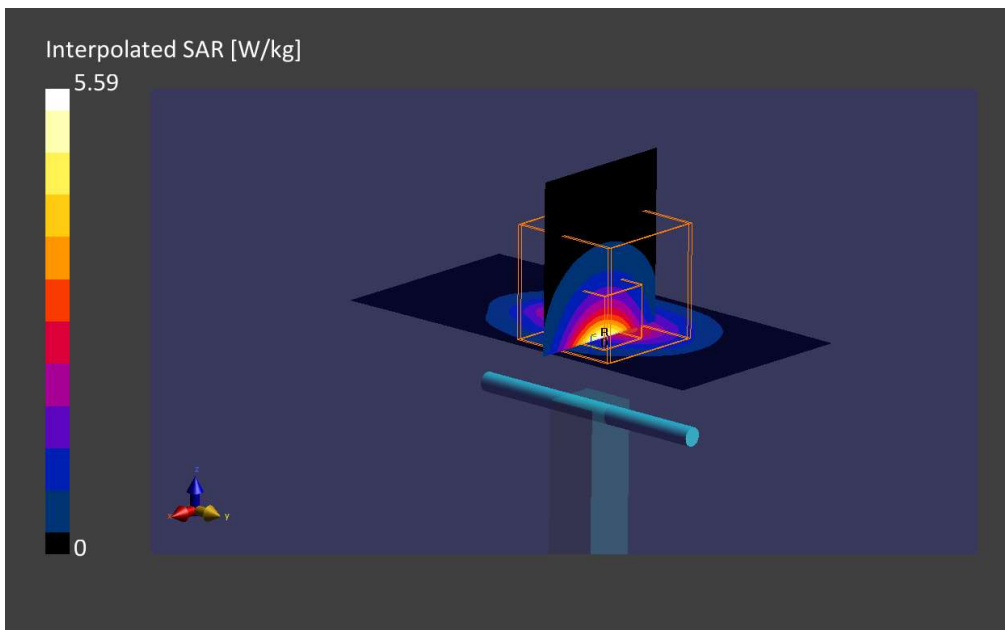
Phantom	TSL, Measured Date	Probe, Calibration Date	DAE, Calibration Date
ELI V8.0 (20deg probe tilt)	MABL-600-6000, 2021-Nov-22	EX3DV4 - SN3978, 2021-05-21	DAE4ip Sn1658, 2021-08-04

**Scan Setup**

	Area Scan	Zoom Scan
Grid Extents [mm]	40.0 x 80.0	30.0 x 30.0 x 30.0
Grid Steps [mm]	10.0 x 10.0	5.0 x 5.0 x 1.5
Sensor Surface [mm]	3.0	1.4
Graded Grid	Yes	Yes
Grading Ratio	1.5	1.5
MAIA	Confirmed by MAIA	Confirmed by MAIA
Surface Detection	All points	All points
Scan Method	Measured	Measured

**Measurement Results**

	Area Scan	Zoom Scan
Date	2021-11-23, 15:26	2021-11-23, 15:36
psSAR1g [W/kg]	2.52	2.58
psSAR10g[W/kg]	1.11	1.16
Power Drift [dB]	-0.01	-0.02
Power Scaling	Disabled	Disabled
Scaling Factor		
TSL Correction	Positive Only	Positive Only
M2/M1 [%]		78.5
Dist3dBPeak[mm]		8.1



**38. System Check Body Liquid 2600MHz – 2021-11-17**

**Device under Test Properties**

Name, Manufacturer	Dimensions [mm]	Serial Number	DUT Type
D2600MHz, SPEAG	50.0 x 10.0 x 8.0	1100	Validation Dipole

**Exposure Conditions**

Phantom Section, TSL	Position, Test Distance [mm]	Band	Group, UID	Frequency [MHz], Channel Number	Conversion Factor	TSL Conductivity [S/m]	TSL Permittivity
Flat, MSL	,		0--	2600.0, 0	8.1	2.10	50.7

**Hardware Setup**

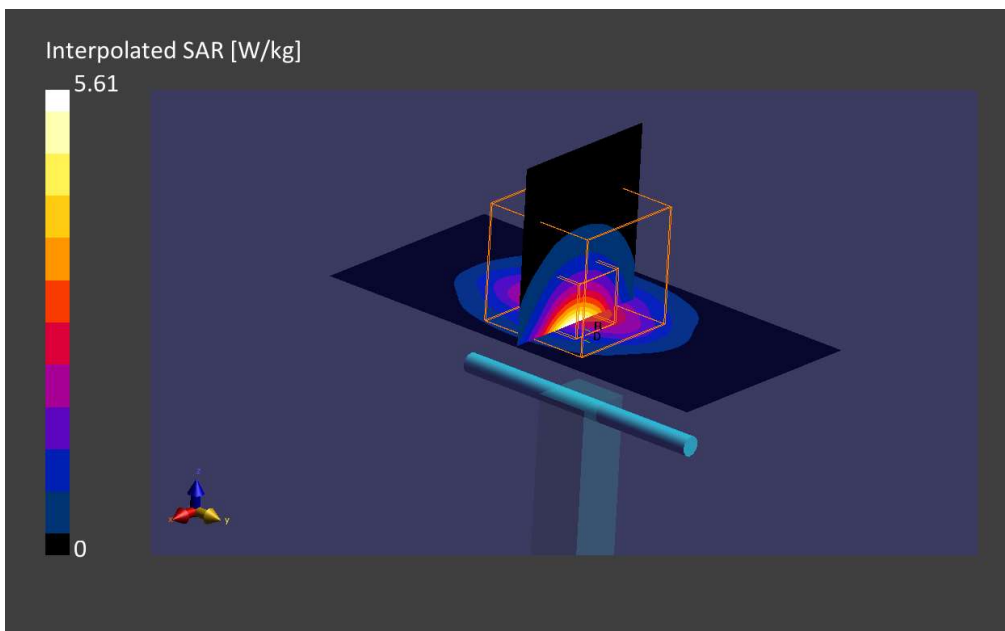
Phantom	TSL, Measured Date	Probe, Calibration Date	DAE, Calibration Date
ELI V8.0 (20deg probe tilt) - 2124	MBBL-600-6000, 2021-Nov-16	EX3DV4 - SN7604, 2021-08-16	DAE4 Sn1628, 2021-08-06

**Scan Setup**

	Area Scan	Zoom Scan
Grid Extents [mm]	40.0 x 80.0	30.0 x 30.0 x 30.0
Grid Steps [mm]	10.0 x 10.0	5.0 x 5.0 x 1.5
Sensor Surface [mm]	3.0	1.4
Graded Grid	Yes	Yes
Grading Ratio	1.5	1.5
MAIA	Confirmed by MAIA	Confirmed by MAIA
Surface Detection	VMS + 6p	VMS + 6p
Scan Method	Measured	Measured

**Measurement Results**

	Area Scan	Zoom Scan
Date	2021-11-17, 17:14	2021-11-17, 17:22
psSAR1g [W/kg]	2.58	2.59
psSAR10g[W/kg]	1.13	1.15
Power Drift [dB]	-0.08	-0.01
Power Scaling	Disabled	Disabled
Scaling Factor [dB]		
TSL Correction	Positive Only	Positive Only
M2/M1 [%]		78.9
Dist3dBPeak[mm]		8.9





### 39. System Check Body Liquid 2600MHz – 2021-11-16

**Device under Test Properties**

Name, Manufacturer	Dimensions [mm]	Serial Number	DUT Type
D2600MHz, SPEAG	50.0 x 10.0 x 8.0	1100	Validation Dipole

**Exposure Conditions**

Phantom Section, TSL	Position, Test Distance [mm]	Band	Group, UID	Frequency [MHz], Channel Number	Conversion Factor	TSL Conductivity [S/m]	TSL Permittivity
Flat, MSL	,		0--	2600.0, 0	8.1	2.10	50.7

**Hardware Setup**

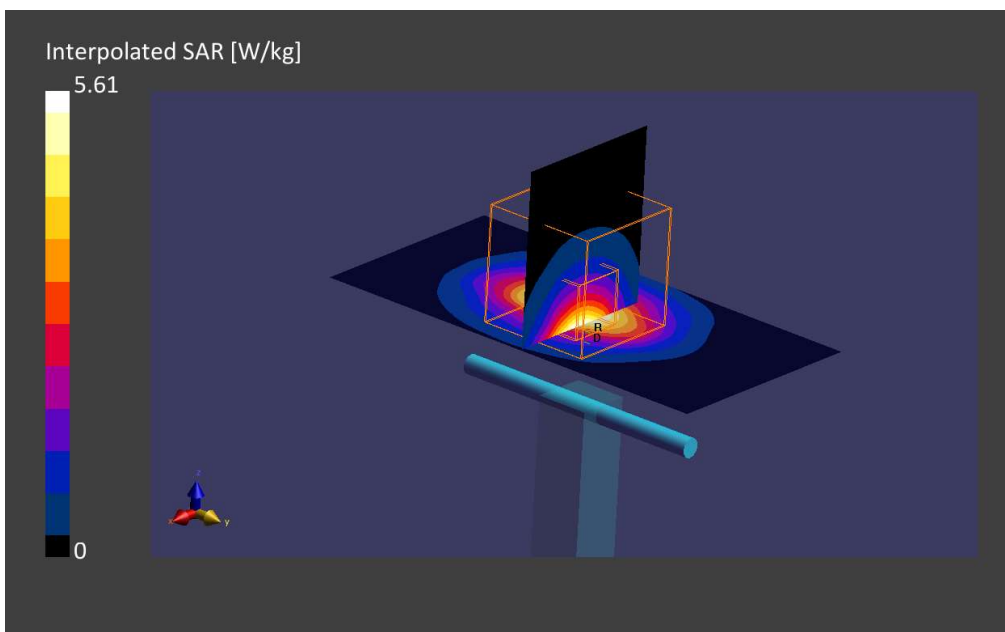
Phantom	TSL, Measured Date	Probe, Calibration Date	DAE, Calibration Date
ELI V8.0 (20deg probe tilt) 2124	MBBL-600-6000, 2021-Nov-16	EX3DV4 - SN7604, 2021-08-16	DAE4 Sn1628, 2021-08-06

**Scan Setup**

	Area Scan	Zoom Scan
Grid Extents [mm]	40.0 x 80.0	30.0 x 30.0 x 30.0
Grid Steps [mm]	10.0 x 10.0	5.0 x 5.0 x 1.5
Sensor Surface [mm]	3.0	1.4
Graded Grid	Yes	Yes
Grading Ratio	1.5	1.5
MAIA	Confirmed by MAIA	Confirmed by MAIA
Surface Detection	VMS + 6p	VMS + 6p
Scan Method	Measured	Measured

**Measurement Results**

	Area Scan	Zoom Scan
Date	2021-11-16, 17:14	2021-11-16, 17:22
psSAR1g [W/kg]	2.58	2.59
psSAR10g[W/kg]	1.13	1.15
Power Drift [dB]	-0.08	-0.01
Power Scaling	Disabled	Disabled
Scaling Factor		
[dB]		
TSL Correction	Positive Only	Positive Only
M2/M1 [%]		78.9
Dist3dBPeak[mm]		8.9



**40. System Check Body Liquid 2600MHz – 2021-12-03**

**Device under Test Properties**

Name, Manufacturer	Dimensions [mm]	Serial Number	DUT Type
D2600MHz, SPEAG	50.0 x 10.0 x 8.0	1100	Validation Dipole

**Exposure Conditions**

Phantom Section, TSL	Position, Test Distance [mm]	Band	Group, UID	Frequency [MHz], Channel Number	Conversion Factor	TSL Conductivity [S/m]	TSL Permittivity
Flat, MSL	,		0--	2600.0, 0	8.1	2.20	51.5

**Hardware Setup**

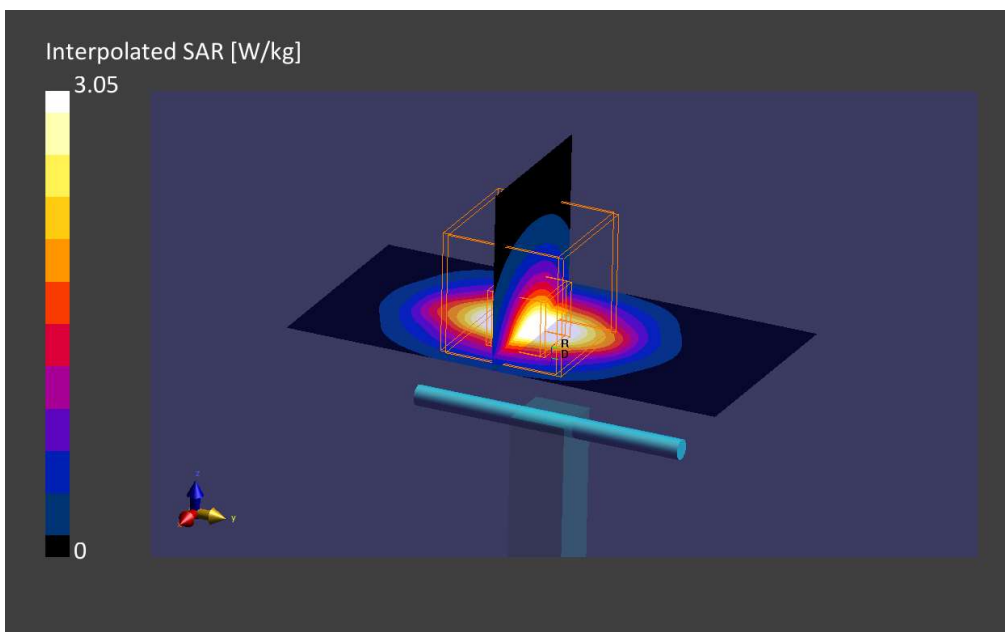
Phantom	TSL, Measured Date	Probe, Calibration Date	DAE, Calibration Date
ELI V8.0 (20deg probe tilt) 2124	MBBL-600-6000, 2021-Dec-02	EX3DV4 - SN7604, 2021-08-16	DAE4 Sn1628, 2021-08-06

**Scan Setup**

	Area Scan	Zoom Scan
Grid Extents [mm]	40.0 x 80.0	30.0 x 30.0 x 30.0
Grid Steps [mm]	10.0 x 10.0	5.0 x 5.0 x 1.5
Sensor Surface [mm]	3.0	1.4
Graded Grid	Yes	Yes
Grading Ratio	1.5	1.5
MAIA	Confirmed by MAIA	Confirmed by MAIA
Surface Detection	VMS + 6p	VMS + 6p
Scan Method	Measured	Measured

**Measurement Results**

	Area Scan	Zoom Scan
Date	2021-12-03, 14:43	2021-12-03, 14:51
psSAR1g [W/kg]	2.78	2.66
psSAR10g[W/kg]	1.22	1.18
Power Drift [dB]	-0.12	-0.08
Power Scaling	Disabled	Disabled
Scaling Factor		
TSL Correction [dB]	Positive Only	Positive Only
M2/M1 [%]		78.9
Dist3dBPeak[mm]		8.9



### 41. System Check Body Liquid 3700MHz

**Device under Test Properties**

Name, Manufacturer	Dimensions [mm]	S/N	DUT Type
Dipole 3700MHz, SPEAG	50.0 x 10.0 x 8.0	1093	Validation Dipole

**Exposure Conditions**

Phantom Section, TSL	Position, Test Distance [mm]	Band	Group, UID	Frequency [MHz], Channel Number	Conversion Factor	TSL Conductivity [S/m]	TSL Permittivity
Flat, MSL	,	,	0--	3700.0, 0	6.13	3.29	48.0

**Hardware Setup**

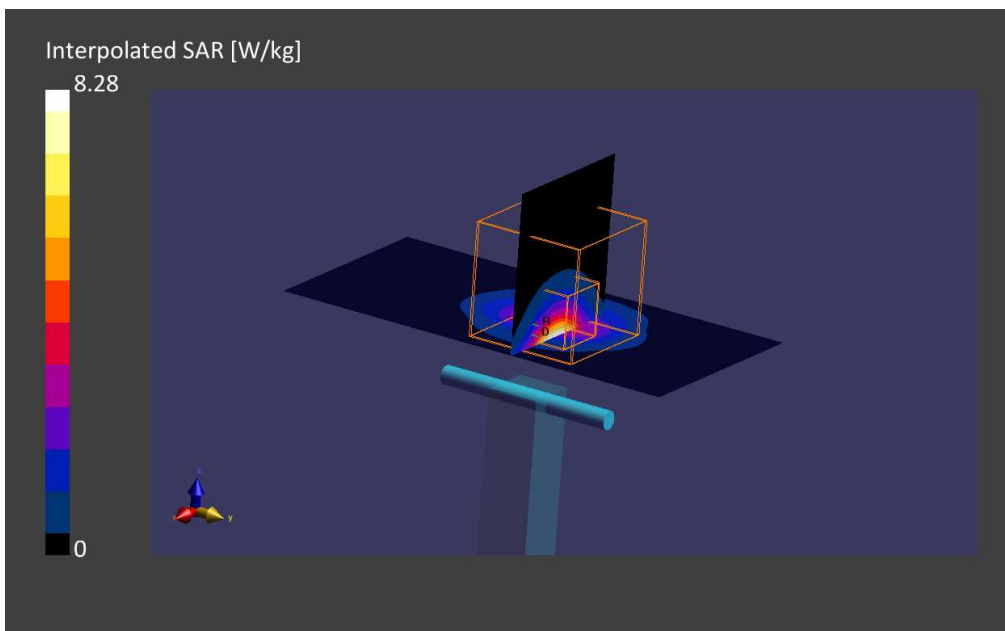
Phantom	TSL, Measured Date	Probe, Calibration Date	DAE, Calibration Date
ELI V8.0 (20deg probe tilt)	MABL-600-6000, 2021-Dec-02	EX3DV4 - SN3978, 2021-05-21	DAE4ip Sn1658, 2021-08-04

**Scan Setup**

	Area Scan	Zoom Scan
Grid Extents [mm]	40.0 x 80.0	28.0 x 28.0 x 28.0
Grid Steps [mm]	10.0 x 10.0	5.0 x 5.0 x 1.4
Sensor Surface [mm]	3.0	1.4
Graded Grid	Yes	Yes
Grading Ratio	1.5	1.5
MAIA	Confirmed by MAIA	Confirmed by MAIA
Surface Detection	VMS + 6p	VMS + 6p
Scan Method	Measured	Measured

**Measurement Results**

	Area Scan	Zoom Scan
Date	2021-12-03, 15:11	2021-12-03, 15:17
psSAR1g [W/kg]	2.81	2.99
psSAR10g[W/kg]	1.03	1.10
Power Drift [dB]	-0.01	-0.03
Power Scaling	Disabled	Disabled
Scaling Factor [dB]		
TSL Correction	Positive Only	Positive Only
M2/M1 [%]		73.2
Dist3dBPeak[mm]		7.6

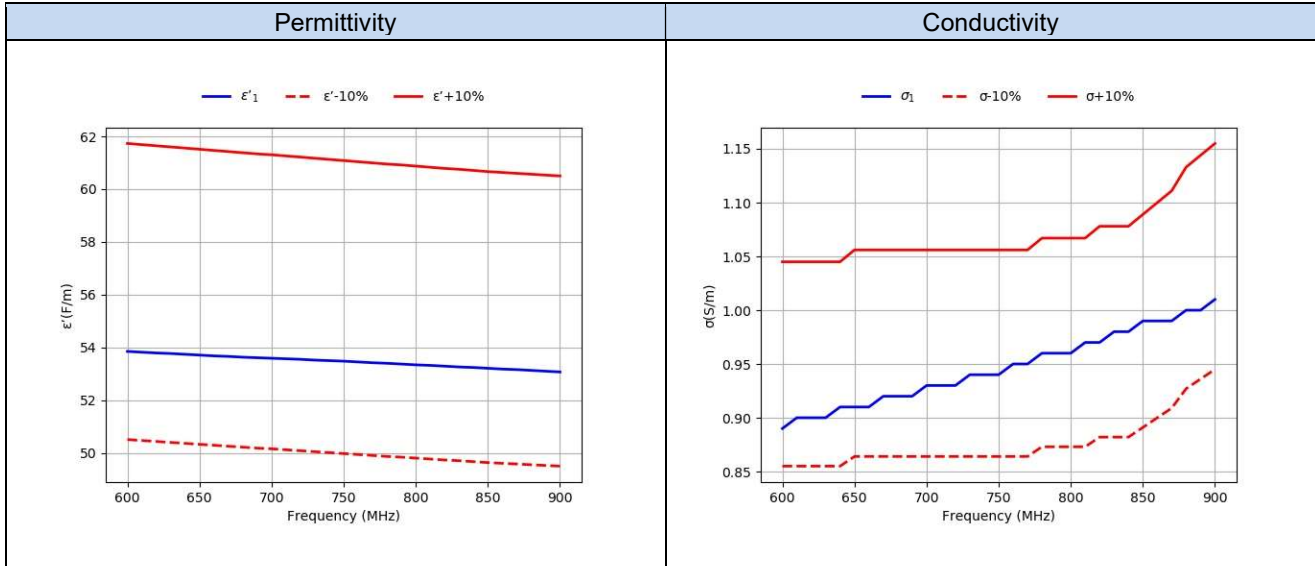


# Annex D. TSL Dielectric Parameters

## D.1 Body 600MHz-900MHz

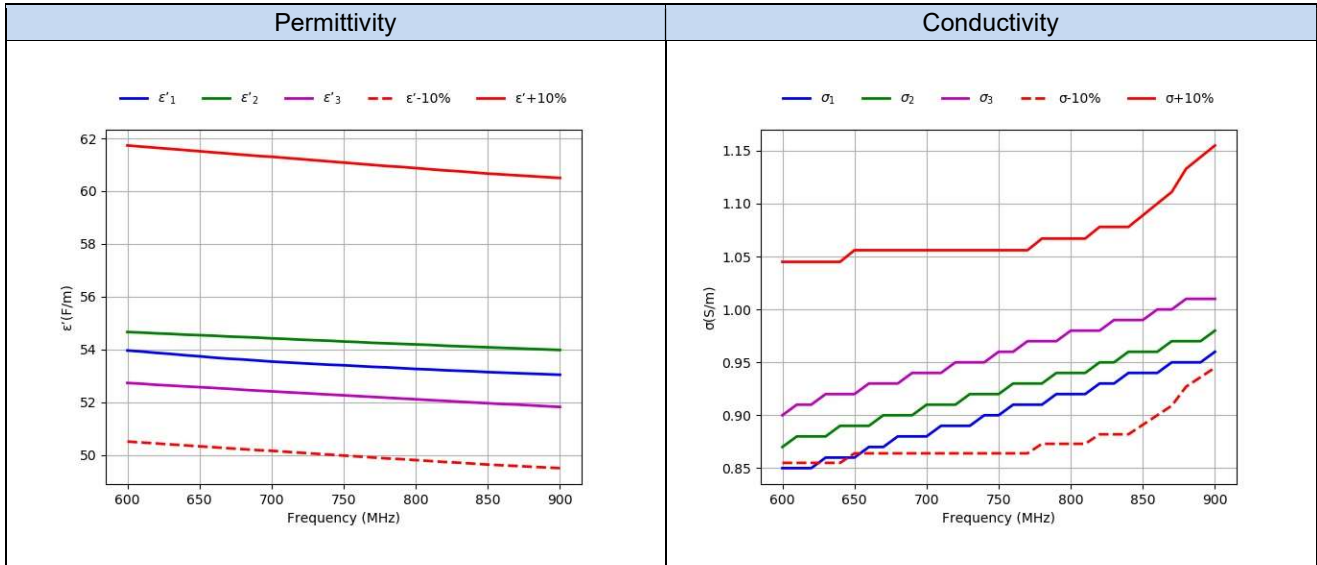
### SAR System #2

Freq. (MHz)	Target		2020-11-22 Measured	
	$\epsilon'$ (F/m)	$\sigma$ (S/m)	$\epsilon'_1$ (F/m)	$\sigma_1$ (S/m)
	600.0	56.12	0.95	53.85
610.0	56.08	0.95	53.82	0.9
620.0	56.04	0.95	53.79	0.9
630.0	56.0	0.95	53.77	0.9
640.0	55.96	0.95	53.74	0.91
650.0	55.92	0.96	53.71	0.91
660.0	55.88	0.96	53.68	0.91
670.0	55.84	0.96	53.66	0.92
680.0	55.8	0.96	53.63	0.92
690.0	55.76	0.96	53.61	0.92
700.0	55.73	0.96	53.59	0.93
710.0	55.69	0.96	53.57	0.93
720.0	55.65	0.96	53.55	0.93
730.0	55.61	0.96	53.52	0.94
740.0	55.57	0.96	53.5	0.94
750.0	55.53	0.96	53.48	0.94
760.0	55.49	0.96	53.45	0.95
770.0	55.45	0.96	53.42	0.95
780.0	55.41	0.97	53.4	0.96
790.0	55.38	0.97	53.37	0.96
800.0	55.34	0.97	53.34	0.96
810.0	55.3	0.97	53.32	0.97
820.0	55.26	0.98	53.29	0.97
830.0	55.23	0.98	53.26	0.98
840.0	55.19	0.98	53.24	0.98
850.0	55.15	0.99	53.21	0.99
860.0	55.12	1.0	53.18	0.99
870.0	55.09	1.01	53.16	0.99
880.0	55.06	1.03	53.13	1.0
890.0	55.03	1.04	53.1	1.0
900.0	55.0	1.05	53.07	1.01



**SAR System #4**

Freq.(MHz)	2021-11-16		2021-11-19		2021-11-22			
	Target		Measured					
	$\epsilon'$ (F/m)	$\sigma$ (S/m)	$\epsilon'1$ (F/m)	$\sigma1$ (S/m)	$\epsilon'2$ (F/m)	$\sigma2$ (S/m)	$\epsilon'3$ (F/m)	$\sigma3$ (S/m)
600.0	56.12	0.95	53.96	0.85	54.66	0.87	52.73	0.9
610.0	56.08	0.95	53.92	0.85	54.64	0.88	52.7	0.91
620.0	56.04	0.95	53.87	0.85	54.61	0.88	52.66	0.91
630.0	56.0	0.95	53.83	0.86	54.59	0.88	52.63	0.92
640.0	55.96	0.95	53.78	0.86	54.56	0.89	52.6	0.92
650.0	55.92	0.96	53.74	0.86	54.54	0.89	52.57	0.92
660.0	55.88	0.96	53.69	0.87	54.52	0.89	52.54	0.93
670.0	55.84	0.96	53.65	0.87	54.49	0.9	52.51	0.93
680.0	55.8	0.96	53.62	0.88	54.47	0.9	52.47	0.93
690.0	55.76	0.96	53.58	0.88	54.45	0.9	52.44	0.94
700.0	55.73	0.96	53.54	0.88	54.42	0.91	52.41	0.94
710.0	55.69	0.96	53.51	0.89	54.4	0.91	52.38	0.94
720.0	55.65	0.96	53.48	0.89	54.37	0.91	52.35	0.95
730.0	55.61	0.96	53.45	0.89	54.35	0.92	52.32	0.95
740.0	55.57	0.96	53.42	0.9	54.33	0.92	52.29	0.95
750.0	55.53	0.96	53.4	0.9	54.3	0.92	52.26	0.96
760.0	55.49	0.96	53.37	0.91	54.28	0.93	52.23	0.96
770.0	55.45	0.96	53.34	0.91	54.25	0.93	52.2	0.97
780.0	55.41	0.97	53.32	0.91	54.23	0.93	52.17	0.97
790.0	55.38	0.97	53.29	0.92	54.21	0.94	52.14	0.97
800.0	55.34	0.97	53.26	0.92	54.19	0.94	52.11	0.98
810.0	55.3	0.97	53.24	0.92	54.17	0.94	52.08	0.98
820.0	55.26	0.98	53.21	0.93	54.14	0.95	52.05	0.98
830.0	55.23	0.98	53.19	0.93	54.12	0.95	52.02	0.99
840.0	55.19	0.98	53.17	0.94	54.1	0.96	51.99	0.99
850.0	55.15	0.99	53.14	0.94	54.08	0.96	51.96	0.99
860.0	55.12	1.0	53.12	0.94	54.06	0.96	51.93	1.0
870.0	55.09	1.01	53.1	0.95	54.04	0.97	51.91	1.0
880.0	55.06	1.03	53.08	0.95	54.02	0.97	51.88	1.01
890.0	55.03	1.04	53.06	0.95	54.0	0.97	51.85	1.01
900.0	55.0	1.05	53.04	0.96	53.98	0.98	51.82	1.01

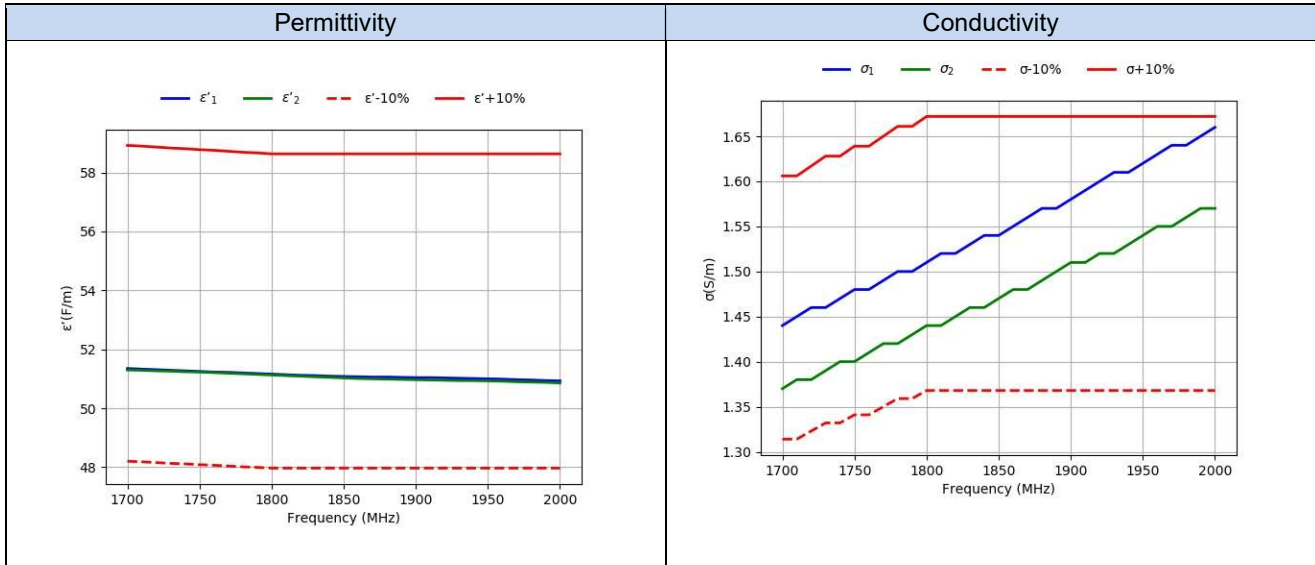


**D.2 Body 1700MHz-2000MHz**

**SAR System #2**

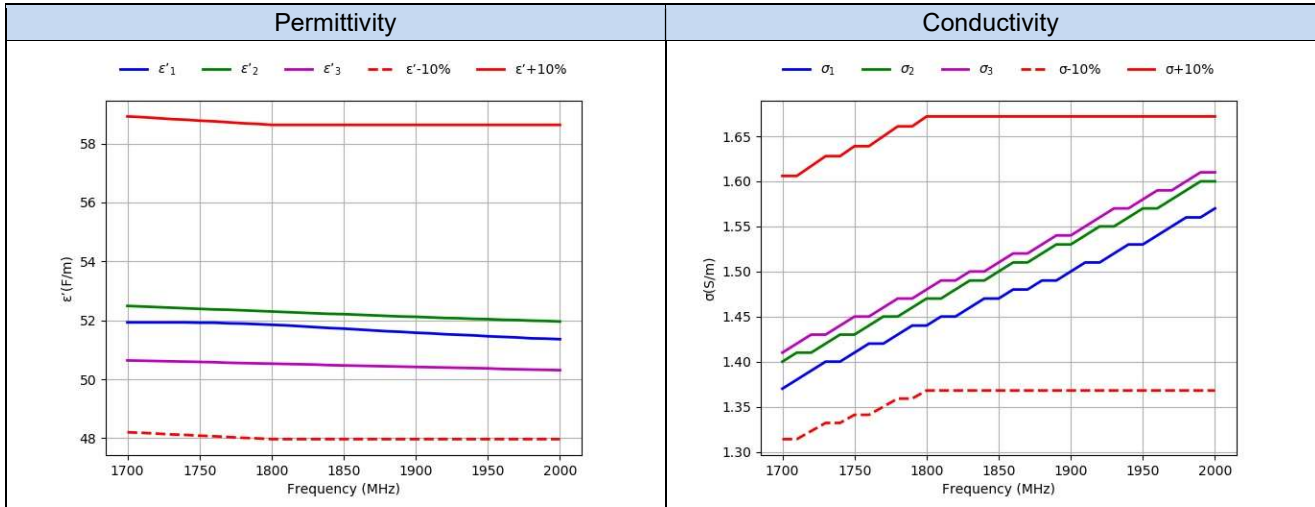
Freq. (MHz)	Target		2020-11-22		2020-11-25	
	Target		Measured			
	$\epsilon'$ (F/m)	$\sigma$ (S/m)	$\epsilon'1$ (F/m)	$\sigma1$ (S/m)	$\epsilon'2$ (F/m)	$\sigma2$ (S/m)
1700.0	53.56	1.46	51.35	1.44	51.3	1.37
1710.0	53.54	1.46	51.33	1.45	51.29	1.38
1720.0	53.51	1.47	51.31	1.46	51.27	1.38
1730.0	53.48	1.48	51.29	1.46	51.26	1.39
1740.0	53.46	1.48	51.27	1.47	51.24	1.4
1750.0	53.43	1.49	51.25	1.48	51.23	1.4
1760.0	53.41	1.49	51.23	1.48	51.21	1.41
1770.0	53.38	1.5	51.22	1.49	51.19	1.42
1780.0	53.35	1.51	51.2	1.5	51.17	1.42
1790.0	53.33	1.51	51.18	1.5	51.15	1.43
1800.0	53.3	1.52	51.16	1.51	51.13	1.44
1810.0	53.3	1.52	51.14	1.52	51.11	1.44
1820.0	53.3	1.52	51.12	1.52	51.09	1.45
1830.0	53.3	1.52	51.11	1.53	51.07	1.46
1840.0	53.3	1.52	51.09	1.54	51.05	1.46
1850.0	53.3	1.52	51.08	1.54	51.03	1.47
1860.0	53.3	1.52	51.07	1.55	51.01	1.48
1870.0	53.3	1.52	51.06	1.56	51.0	1.48
1880.0	53.3	1.52	51.06	1.57	50.99	1.49
1890.0	53.3	1.52	51.05	1.57	50.98	1.5
1900.0	53.3	1.52	51.04	1.58	50.97	1.51
1910.0	53.3	1.52	51.04	1.59	50.96	1.51
1920.0	53.3	1.52	51.03	1.6	50.95	1.52
1930.0	53.3	1.52	51.02	1.61	50.94	1.52
1940.0	53.3	1.52	51.01	1.61	50.94	1.53
1950.0	53.3	1.52	51.0	1.62	50.93	1.54
1960.0	53.3	1.52	50.99	1.63	50.92	1.55
1970.0	53.3	1.52	50.97	1.64	50.9	1.55
1980.0	53.3	1.52	50.96	1.64	50.89	1.56
1990.0	53.3	1.52	50.94	1.65	50.88	1.57
2000.0	53.3	1.52	50.93	1.66	50.86	1.57





**SAR System #4**

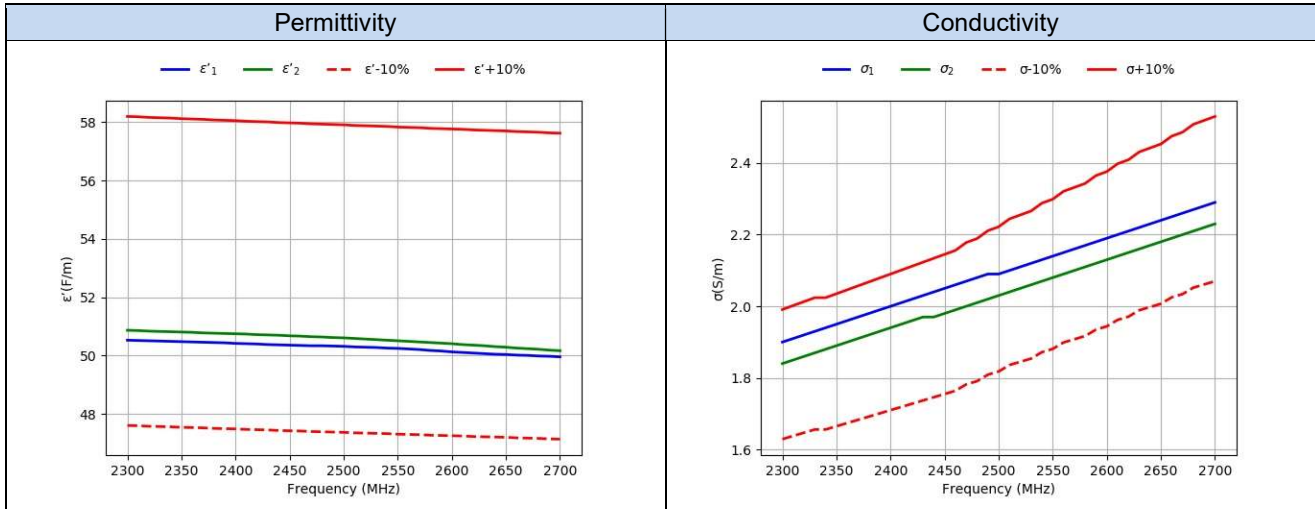
		2021-11-16		2021-11-19		2021-11-22		
Freq.(MHz)	Target		Measured					
	$\epsilon'(F/m)$	$\sigma(S/m)$	$\epsilon'1(F/m)$	$\sigma1(S/m)$	$\epsilon'2(F/m)$	$\sigma2(S/m)$	$\epsilon'3(F/m)$	$\sigma3(S/m)$
1700.0	53.56	1.46	51.93	1.37	52.49	1.4	50.64	1.41
1710.0	53.54	1.46	51.93	1.38	52.47	1.41	50.63	1.42
1720.0	53.51	1.47	51.93	1.39	52.45	1.41	50.62	1.43
1730.0	53.48	1.48	51.93	1.4	52.43	1.42	50.61	1.43
1740.0	53.46	1.48	51.93	1.4	52.41	1.43	50.6	1.44
1750.0	53.43	1.49	51.92	1.41	52.39	1.43	50.59	1.45
1760.0	53.41	1.49	51.92	1.42	52.37	1.44	50.58	1.45
1770.0	53.38	1.5	51.9	1.42	52.36	1.45	50.56	1.46
1780.0	53.35	1.51	51.89	1.43	52.34	1.45	50.55	1.47
1790.0	53.33	1.51	51.87	1.44	52.32	1.46	50.54	1.47
1800.0	53.3	1.52	51.85	1.44	52.3	1.47	50.53	1.48
1810.0	53.3	1.52	51.83	1.45	52.28	1.47	50.52	1.49
1820.0	53.3	1.52	51.8	1.45	52.26	1.48	50.51	1.49
1830.0	53.3	1.52	51.77	1.46	52.24	1.49	50.5	1.5
1840.0	53.3	1.52	51.74	1.47	52.22	1.49	50.48	1.5
1850.0	53.3	1.52	51.72	1.47	52.21	1.5	50.47	1.51
1860.0	53.3	1.52	51.69	1.48	52.19	1.51	50.46	1.52
1870.0	53.3	1.52	51.66	1.48	52.17	1.51	50.45	1.52
1880.0	53.3	1.52	51.63	1.49	52.15	1.52	50.44	1.53
1890.0	53.3	1.52	51.61	1.49	52.13	1.53	50.43	1.54
1900.0	53.3	1.52	51.58	1.5	52.12	1.53	50.42	1.54
1910.0	53.3	1.52	51.56	1.51	52.1	1.54	50.41	1.55
1920.0	53.3	1.52	51.53	1.51	52.08	1.55	50.4	1.56
1930.0	53.3	1.52	51.51	1.52	52.07	1.55	50.39	1.57
1940.0	53.3	1.52	51.49	1.53	52.05	1.56	50.38	1.57
1950.0	53.3	1.52	51.46	1.53	52.04	1.57	50.37	1.58
1960.0	53.3	1.52	51.44	1.54	52.02	1.57	50.35	1.59
1970.0	53.3	1.52	51.42	1.55	52.01	1.58	50.34	1.59
1980.0	53.3	1.52	51.39	1.56	51.99	1.59	50.33	1.6
1990.0	53.3	1.52	51.38	1.56	51.98	1.6	50.32	1.61
2000.0	53.3	1.52	51.36	1.57	51.96	1.6	50.31	1.61



**D.3 Body 2300MHz-2700MHz**

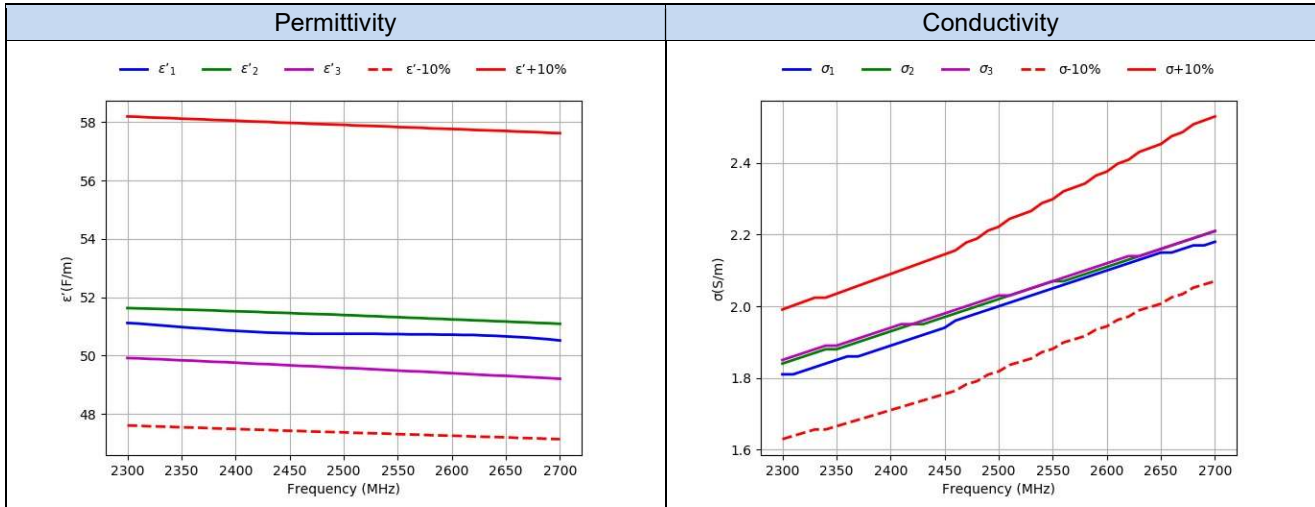
**SAR System #2**

Freq.(MHz)	Target		2020-11-22		2020-11-29	
			Measured			
	e' (F/m)	s (S/m)	e'1 (F/m)	s1 (S/m)		
2300.0	52.9	1.81	50.53	1.90	50.87	1.84
2310.0	52.89	1.82	50.52	1.91	50.86	1.85
2320.0	52.87	1.83	50.51	1.92	50.84	1.86
2330.0	52.86	1.84	50.5	1.93	50.83	1.87
2340.0	52.85	1.84	50.49	1.94	50.82	1.88
2350.0	52.83	1.85	50.48	1.95	50.81	1.89
2360.0	52.82	1.86	50.47	1.96	50.8	1.9
2370.0	52.81	1.87	50.46	1.97	50.78	1.91
2380.0	52.79	1.88	50.45	1.98	50.77	1.92
2390.0	52.78	1.89	50.44	1.99	50.76	1.93
2400.0	52.77	1.9	50.42	2.0	50.75	1.94
2410.0	52.75	1.91	50.41	2.01	50.74	1.95
2420.0	52.74	1.92	50.4	2.02	50.72	1.96
2430.0	52.73	1.93	50.38	2.03	50.71	1.97
2440.0	52.71	1.94	50.37	2.04	50.7	1.97
2450.0	52.7	1.95	50.36	2.05	50.68	1.98
2460.0	52.69	1.96	50.35	2.06	50.67	1.99
2470.0	52.67	1.98	50.34	2.07	50.65	2.0
2480.0	52.66	1.99	50.34	2.08	50.64	2.01
2490.0	52.65	2.01	50.33	2.09	50.62	2.02
2500.0	52.64	2.02	50.32	2.09	50.61	2.03
2510.0	52.62	2.04	50.3	2.1	50.59	2.04
2520.0	52.61	2.05	50.29	2.11	50.57	2.05
2530.0	52.6	2.06	50.28	2.12	50.55	2.06
2540.0	52.59	2.08	50.26	2.13	50.53	2.07
2550.0	52.57	2.09	50.25	2.14	50.51	2.08
2560.0	52.56	2.11	50.23	2.15	50.49	2.09
2570.0	52.55	2.12	50.21	2.16	50.47	2.1
2580.0	52.53	2.13	50.18	2.17	50.45	2.11
2590.0	52.52	2.15	50.16	2.18	50.43	2.12
2600.0	52.51	2.16	50.13	2.19	50.41	2.13
2610.0	52.5	2.18	50.11	2.2	50.38	2.14
2620.0	52.48	2.19	50.09	2.21	50.36	2.15
2630.0	52.47	2.21	50.07	2.22	50.34	2.16
2640.0	52.46	2.22	50.05	2.23	50.31	2.17
2650.0	52.45	2.23	50.04	2.24	50.29	2.18
2660.0	52.43	2.25	50.02	2.25	50.26	2.19
2670.0	52.42	2.26	50.01	2.26	50.24	2.2
2680.0	52.41	2.28	49.99	2.27	50.22	2.21
2690.0	52.39	2.29	49.98	2.28	50.19	2.22
2700.0	52.38	2.3	49.96	2.29	50.17	2.23



**SAR System #4**

Freq.(MHz)	2021-11-16		2021-11-19		2021-11-22			
	Target		Measured					
	$\epsilon'$ (F/m)	$\sigma$ (S/m)	$\epsilon'1$ (F/m)	$\sigma1$ (S/m)	$\epsilon'2$ (F/m)	$\sigma2$ (S/m)	$\epsilon'3$ (F/m)	$\sigma3$ (S/m)
2300.0	52.9	1.81	51.12	1.81	51.63	1.84	49.92	1.85
2310.0	52.89	1.82	51.10	1.81	51.62	1.85	49.91	1.86
2320.0	52.87	1.83	51.07	1.82	51.61	1.86	49.89	1.87
2330.0	52.86	1.84	51.04	1.83	51.6	1.87	49.88	1.88
2340.0	52.85	1.84	51.01	1.84	51.59	1.88	49.86	1.89
2350.0	52.83	1.85	50.98	1.85	51.58	1.88	49.84	1.89
2360.0	52.82	1.86	50.95	1.86	51.57	1.89	49.83	1.9
2370.0	52.81	1.87	50.93	1.86	51.56	1.9	49.81	1.91
2380.0	52.79	1.88	50.90	1.87	51.55	1.91	49.79	1.92
2390.0	52.78	1.89	50.87	1.88	51.53	1.92	49.78	1.93
2400.0	52.77	1.9	50.85	1.89	51.52	1.93	49.76	1.94
2410.0	52.75	1.91	50.83	1.9	51.51	1.94	49.74	1.95
2420.0	52.74	1.92	50.81	1.91	51.5	1.95	49.72	1.95
2430.0	52.73	1.93	50.79	1.92	51.48	1.95	49.71	1.96
2440.0	52.71	1.94	50.78	1.93	51.47	1.96	49.69	1.97
2450.0	52.7	1.95	50.77	1.94	51.46	1.97	49.67	1.98
2460.0	52.69	1.96	50.76	1.96	51.44	1.98	49.65	1.99
2470.0	52.67	1.98	50.75	1.97	51.43	1.99	49.64	2.0
2480.0	52.66	1.99	50.75	1.98	51.42	2.0	49.62	2.01
2490.0	52.65	2.01	50.75	1.99	51.41	2.01	49.6	2.02
2500.0	52.64	2.02	50.75	2.0	51.39	2.02	49.58	2.03
2510.0	52.62	2.04	50.75	2.01	51.38	2.03	49.57	2.03
2520.0	52.61	2.05	50.75	2.02	51.36	2.04	49.55	2.04
2530.0	52.6	2.06	50.75	2.03	51.35	2.05	49.53	2.05
2540.0	52.59	2.08	50.74	2.04	51.33	2.06	49.51	2.06
2550.0	52.57	2.09	50.74	2.05	51.32	2.07	49.49	2.07
2560.0	52.56	2.11	50.73	2.06	51.3	2.07	49.47	2.08
2570.0	52.55	2.12	50.73	2.07	51.29	2.08	49.46	2.09
2580.0	52.53	2.13	50.73	2.08	51.27	2.09	49.44	2.1
2590.0	52.52	2.15	50.72	2.09	51.26	2.1	49.42	2.11
2600.0	52.51	2.16	50.72	2.10	51.24	2.11	49.4	2.12
2610.0	52.5	2.18	50.71	2.11	51.23	2.12	49.38	2.13
2620.0	52.48	2.19	50.71	2.12	51.21	2.13	49.36	2.14
2630.0	52.47	2.21	50.69	2.13	51.2	2.14	49.34	2.14
2640.0	52.46	2.22	50.68	2.14	51.18	2.15	49.32	2.15
2650.0	52.45	2.23	50.66	2.15	51.17	2.16	49.31	2.16
2660.0	52.43	2.25	50.64	2.15	51.15	2.17	49.29	2.17
2670.0	52.42	2.26	50.62	2.16	51.14	2.18	49.27	2.18
2680.0	52.41	2.28	50.59	2.17	51.12	2.19	49.25	2.19
2690.0	52.39	2.29	50.56	2.17	51.11	2.2	49.23	2.2
2700.0	52.38	2.3	50.52	2.18	51.09	2.21	49.21	2.21

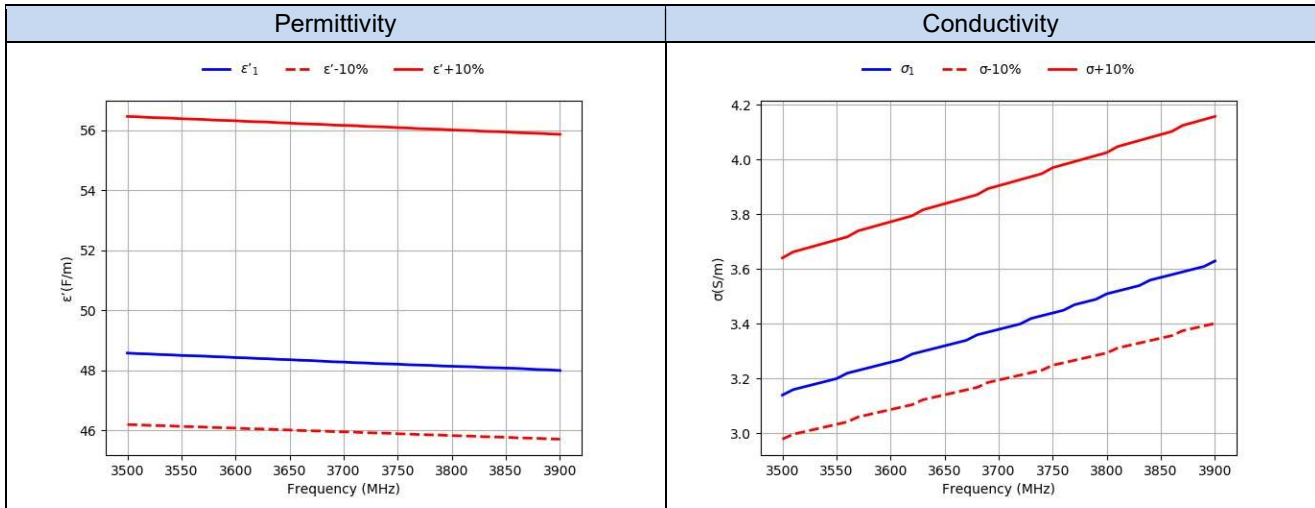


**D.4 Body 3500MHz-3900MHz**

**SAR System #2**

			2020-11-22	
	Target		Measured	
Freq.(MHz)	e' (F/m)	s (S/m)	e'1 (F/m)	s1 (S/m)
3500.0	51.32	3.31	48.57	3.14
3510.0	51.31	3.33	48.55	3.16
3520.0	51.29	3.34	48.54	3.17
3530.0	51.28	3.35	48.52	3.18
3540.0	51.27	3.36	48.51	3.19
3550.0	51.25	3.37	48.49	3.20
3560.0	51.24	3.38	48.48	3.22
3570.0	51.23	3.4	48.47	3.23
3580.0	51.21	3.41	48.45	3.24
3590.0	51.2	3.42	48.44	3.25
3600.0	51.19	3.43	48.42	3.26
3610.0	51.17	3.44	48.41	3.27
3620.0	51.16	3.45	48.39	3.29
3630.0	51.15	3.47	48.38	3.30
3640.0	51.13	3.48	48.36	3.31
3650.0	51.12	3.49	48.35	3.32
3660.0	51.1	3.5	48.33	3.33
3670.0	51.09	3.51	48.32	3.34
3680.0	51.08	3.52	48.3	3.36
3690.0	51.06	3.54	48.28	3.37
3700.0	51.05	3.55	48.27	3.38
3710.0	51.04	3.56	48.25	3.39
3720.0	51.02	3.57	48.24	3.4
3730.0	51.01	3.58	48.22	3.42
3740.0	51.0	3.59	48.21	3.43
3750.0	50.98	3.61	48.2	3.44
3760.0	50.97	3.62	48.18	3.45
3770.0	50.95	3.63	48.17	3.47
3780.0	50.94	3.64	48.16	3.48
3790.0	50.93	3.65	48.14	3.49
3800.0	50.91	3.66	48.13	3.51
3810.0	50.9	3.68	48.12	3.52
3820.0	50.89	3.69	48.11	3.53
3830.0	50.87	3.7	48.09	3.54
3840.0	50.86	3.71	48.08	3.56
3850.0	50.85	3.72	48.07	3.57
3860.0	50.83	3.73	48.06	3.58
3870.0	50.82	3.75	48.04	3.59
3880.0	50.81	3.76	48.02	3.6
3890.0	50.79	3.77	48.01	3.61
3900.0	50.78	3.78	47.99	3.63





**SAR System #4**

Freq.(MHz)			2021-12-02	
	Target		Measured	
	$\epsilon'$ (F/m)	$\sigma$ (S/m)	$\epsilon'$ (F/m)	$\sigma$ (S/m)
3500.0	51.32	3.31	48.33	3.06
3510.0	51.31	3.33	48.31	3.07
3520.0	51.29	3.34	48.29	3.09
3530.0	51.28	3.35	48.27	3.1
3540.0	51.27	3.36	48.25	3.11
3550.0	51.25	3.37	48.23	3.12
3560.0	51.24	3.38	48.22	3.13
3570.0	51.23	3.4	48.2	3.14
3580.0	51.21	3.41	48.19	3.15
3590.0	51.2	3.42	48.17	3.16
3600.0	51.19	3.43	48.16	3.17
3610.0	51.17	3.44	48.14	3.18
3620.0	51.16	3.45	48.12	3.19
3630.0	51.15	3.47	48.11	3.21
3640.0	51.13	3.48	48.09	3.22
3650.0	51.12	3.49	48.07	3.23
3660.0	51.1	3.5	48.05	3.24
3670.0	51.09	3.51	48.04	3.25
3680.0	51.08	3.52	48.02	3.26
3690.0	51.06	3.54	48.0	3.27
3700.0	51.05	3.55	47.98	3.29
3710.0	51.04	3.56	47.96	3.3
3720.0	51.02	3.57	47.95	3.31
3730.0	51.01	3.58	47.93	3.32
3740.0	51.0	3.59	47.91	3.33
3750.0	50.98	3.61	47.9	3.34
3760.0	50.97	3.62	47.88	3.35
3770.0	50.95	3.63	47.87	3.37
3780.0	50.94	3.64	47.85	3.38
3790.0	50.93	3.65	47.83	3.39
3800.0	50.91	3.66	47.82	3.4
3810.0	50.9	3.68	47.81	3.41
3820.0	50.89	3.69	47.79	3.43
3830.0	50.87	3.7	47.78	3.44
3840.0	50.86	3.71	47.77	3.45
3850.0	50.85	3.72	47.75	3.46
3860.0	50.83	3.73	47.74	3.47
3870.0	50.82	3.75	47.72	3.48
3880.0	50.81	3.76	47.71	3.49
3890.0	50.79	3.77	47.69	3.5
3900.0	50.78	3.78	47.67	3.51

