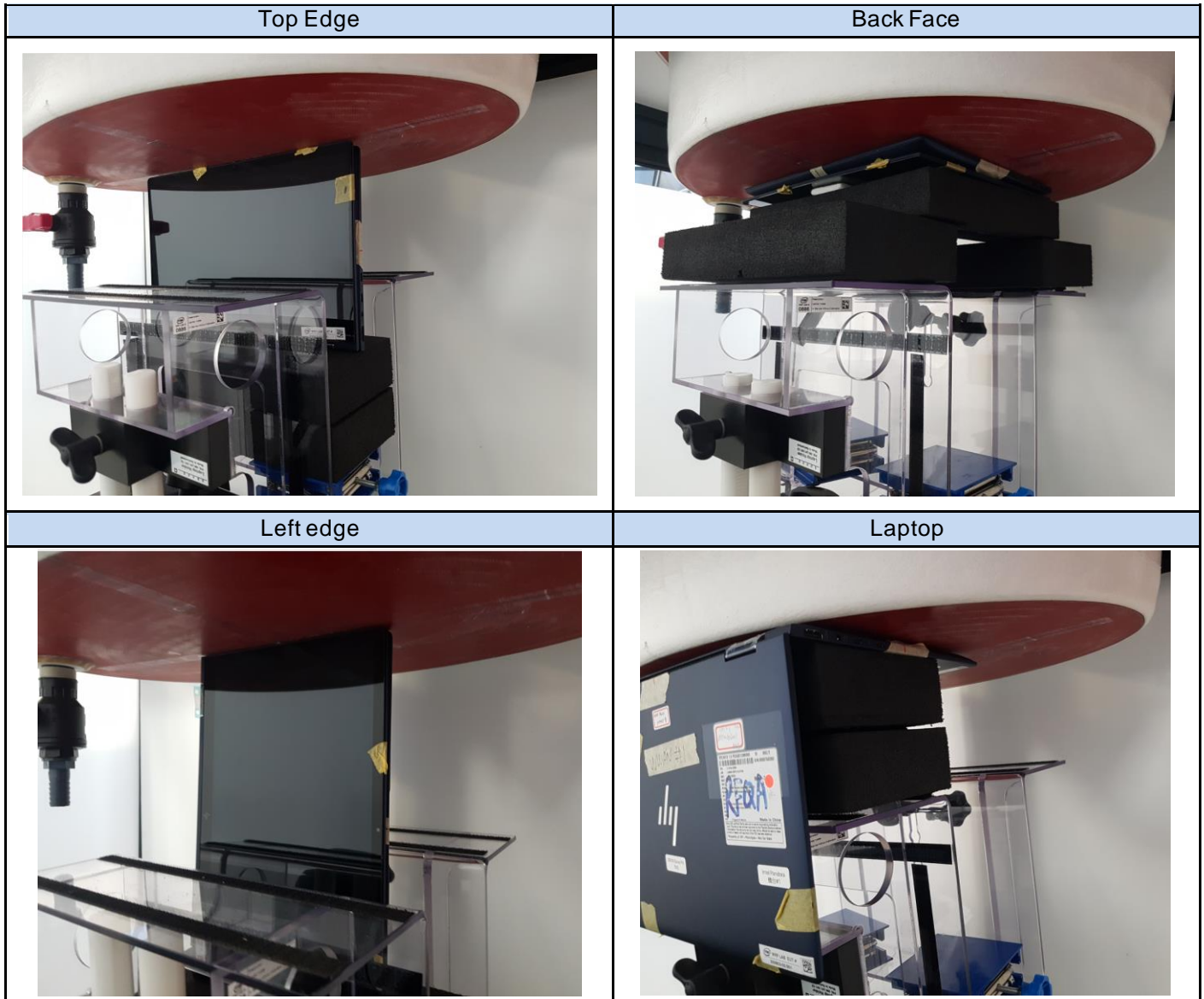


Annex F. Photographs

F.1 Test Sample

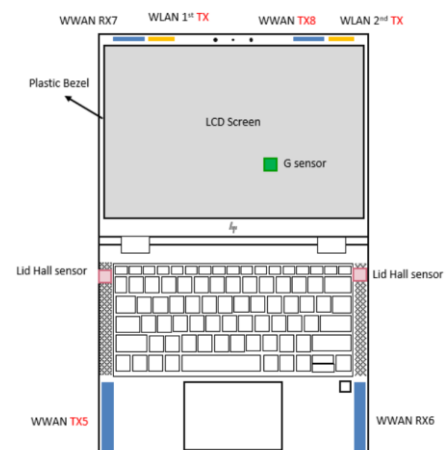
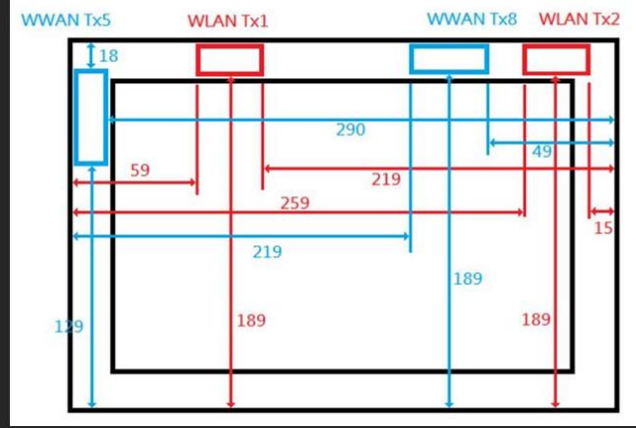
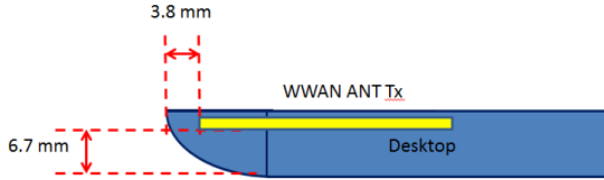
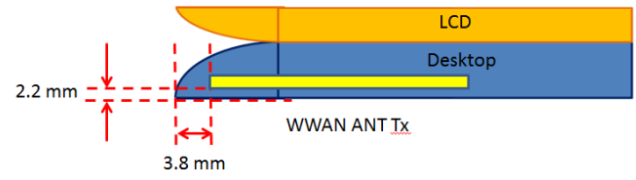
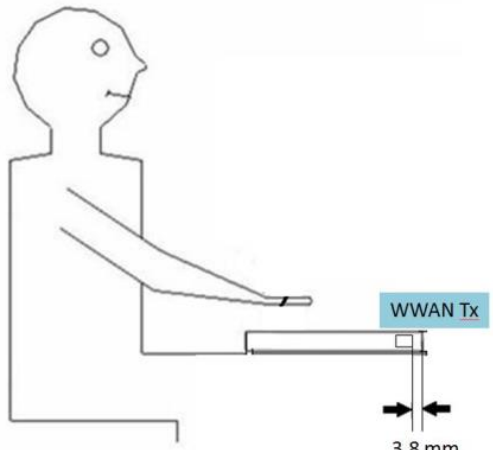
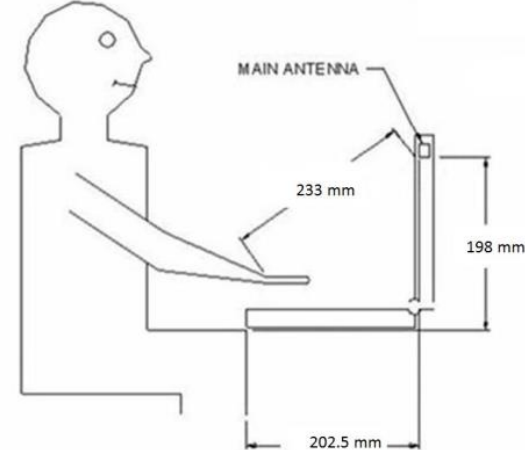
Sample Front	Sample Back
	
Tablet Display	Tablet Keyboard
	
Laptop Mode	
	

F.2 Test positions



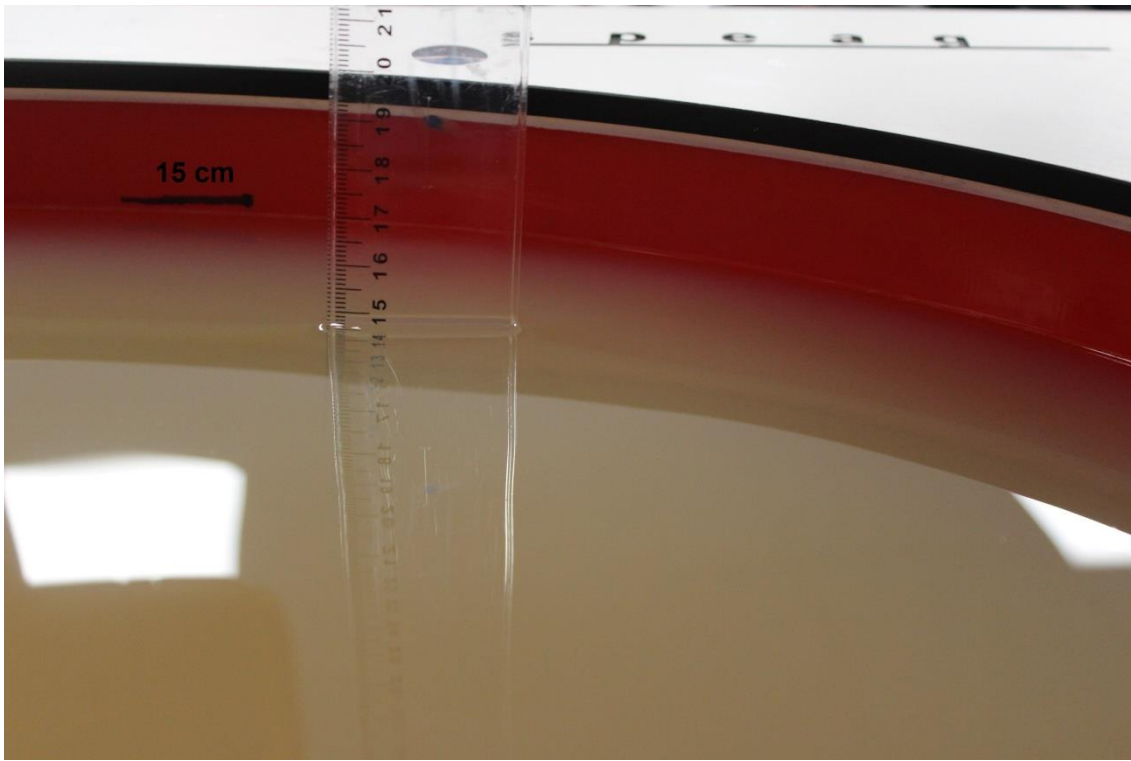
F.3 Antenna host platform location and adjacent edge positions relative to the body

All information (diagrams, values and dimensions) in this section are provided by the manufacturer

Antenna Host Platform location	Antenna Host Platform location - 2
 <p>Diagram showing the location of antennas on a laptop. Labels include: WWAN RX7, WLAN 1st TX, WWAN TX8, WLAN 2nd TX, Plastic Bezel, LCD Screen, G sensor, Lid Hall sensor, WWAN TX5, and WWAN RX6.</p>	<p>Update for WWAN TX5 antenna from Left Edge -> 2.1 mm.</p> <ul style="list-style-type: none"> • WLAN1 antenna from Left Edge -> 59 mm • WLAN2 antenna from Right Edge -> 15 mm • WWAN TX5 antenna from Left Edge -> under checking  <p>Detailed diagram of antenna locations with dimensions in mm. Labels include: WWAN Tx5, WLAN Tx1, WWAN Tx8, and WLAN Tx2. Dimensions shown include 18, 59, 290, 219, 49, 15, 139, 219, 189, and 189.</p>
Antenna Distances to Edges - 1	Antenna Distances to Edges - 2
 <p>Diagram showing the distance of the WWAN ANT Tx antenna from the left edge of the Desktop. Dimensions: 3.8 mm (width of antenna), 6.7 mm (distance from left edge to antenna).</p>	 <p>Diagram showing the distance of the WWAN ANT Tx antenna from the right edge of the Desktop. Dimensions: 2.2 mm (distance from right edge to antenna), 3.8 mm (width of antenna). Labels include: LCD and Desktop.</p>
Tablet Mode	Laptop Mode
 <p>Diagram showing the location of the WWAN Tx antenna in Tablet Mode. Dimension: 3.8 mm (width of antenna).</p>	 <p>Diagram showing the location of the MAIN ANTENNA in Laptop Mode. Dimensions: 233 mm (height from keyboard), 198 mm (height from base), and 202.5 mm (width).</p>

F.4 Phantom liquid level during measurements

ELI phantom Body liquid SAR Dasy SPEAG MBL600-6000V6 Batch - 160603-01



End of the report

This page is intentionally left blank and marks the last page of the test report.