

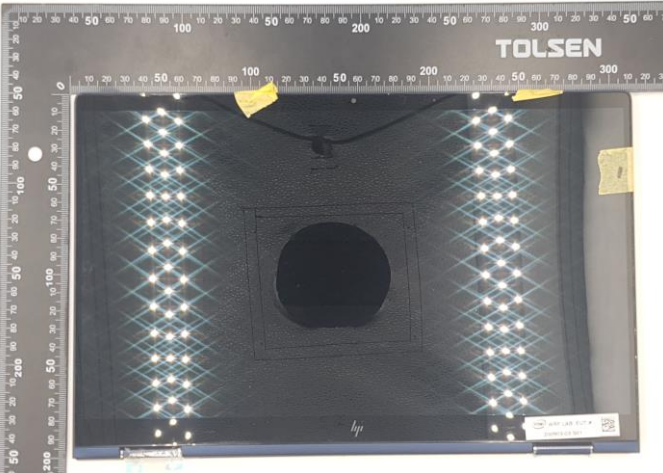


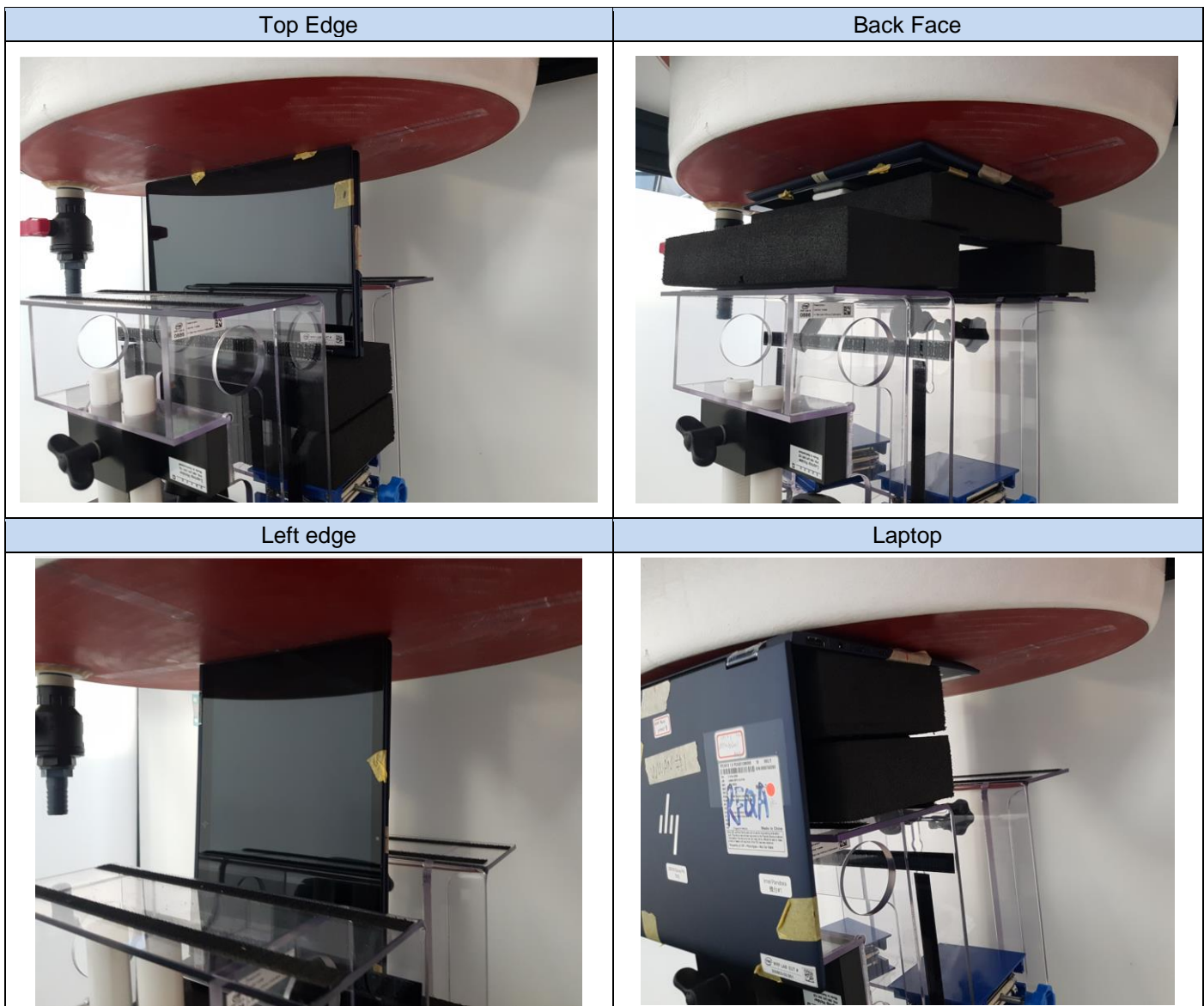


# Annex F. Photographs

## F.1 Test Sample

Sample Front	Sample Back
	
Tablet Display	Tablet Keyboard
	
Laptop Mode	
	

### F.2 Test positions



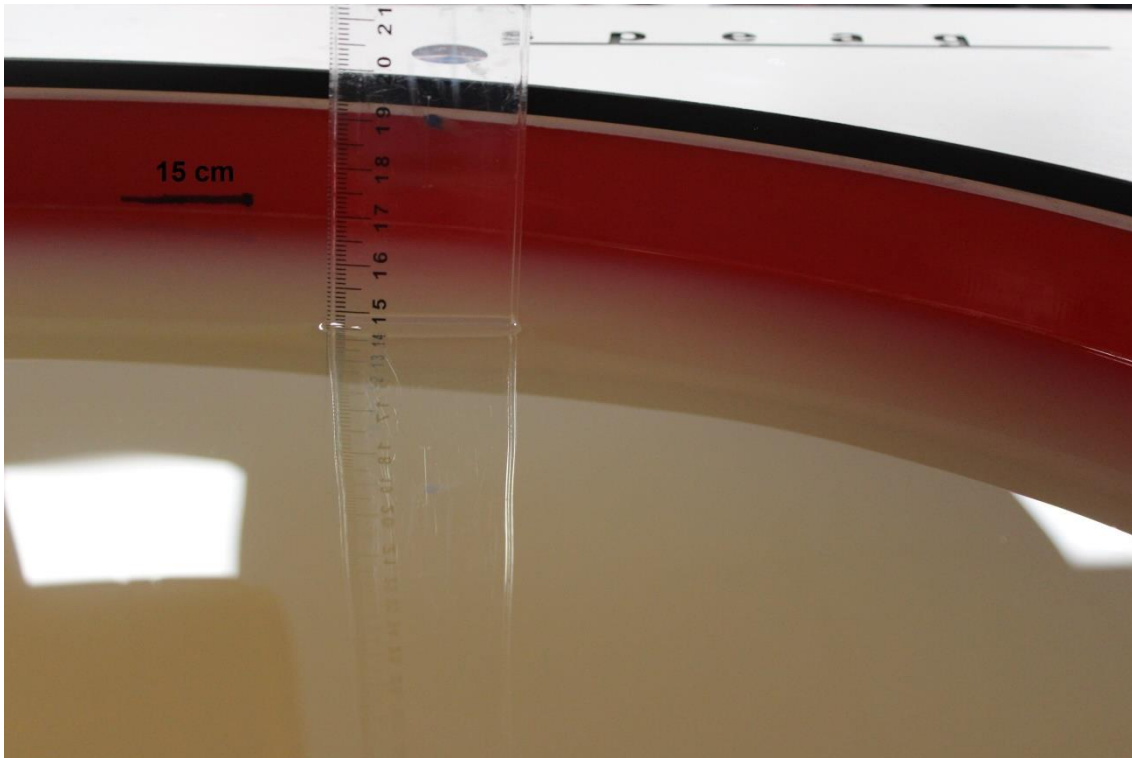
### F.3 Antenna host platform location and adjacent edge positions relative to the body

All information (diagrams, values and dimensions) in this section are provided by the manufacturer

<p style="text-align: center;"><b>Antenna Host Platform location</b></p>	<p style="text-align: center;"><b>Antenna Host Platform location - 2</b></p> <p style="text-align: right; font-size: small;">Update for WWAN TX5 antenna from Left Edge -&gt; 2.1 mm.</p> <ul style="list-style-type: none"> <li>• WLAN1 antenna from Left Edge -&gt; 59 mm</li> <li>• WLAN2 antenna from Right Edge -&gt; 15 mm</li> <li>• WWAN TX5 antenna from Left Edge -&gt; under checking</li> </ul>
<p style="text-align: center;"><b>Antenna Distances to Edges - 1</b></p>	<p style="text-align: center;"><b>Antenna Distances to Edges - 2</b></p>
<p style="text-align: center;"><b>Tablet Mode</b></p>	<p style="text-align: center;"><b>Laptop Mode</b></p>

### F.4 Phantom liquid level during measurements

ELI phantom Body liquid SAR Dasy SPEAG MBL600-6000V6 Batch - 160603-01



**End of the report**

**This page is intentionally left blank and marks the last page of the test report.**