

Annex F. Photographs

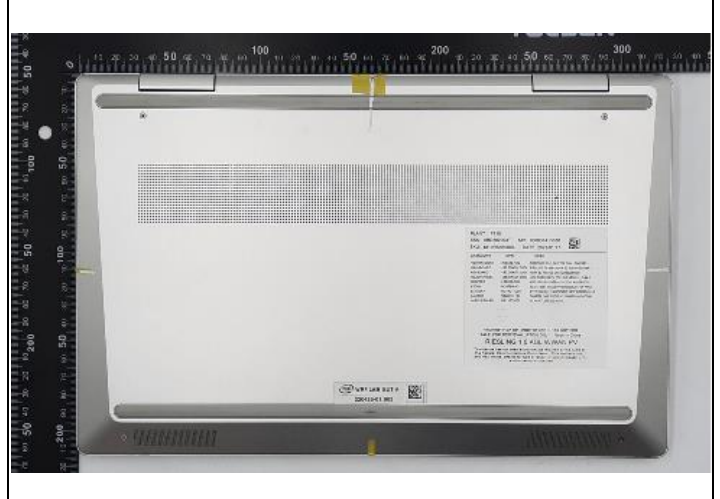
F.1 Test Samples

<p>Sample Front 220425-01.S03</p> 	<p>Sample Back 220425-01.S03</p> 
<p>Sample Screen 220425-01.S03</p> 	<p>Sample Keyboard 220425-01.S03</p> 
<p>Sample Laptop 220425-01.S03</p> 	

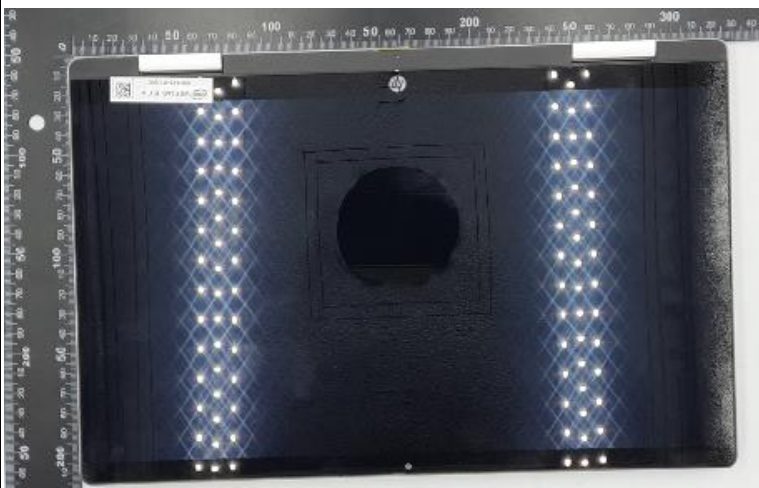
Sample Front 220425-01.S04



Sample Back 220425-01.S04



Sample Screen 220425-01.S04



Sample Keyboard 220425-01.S04



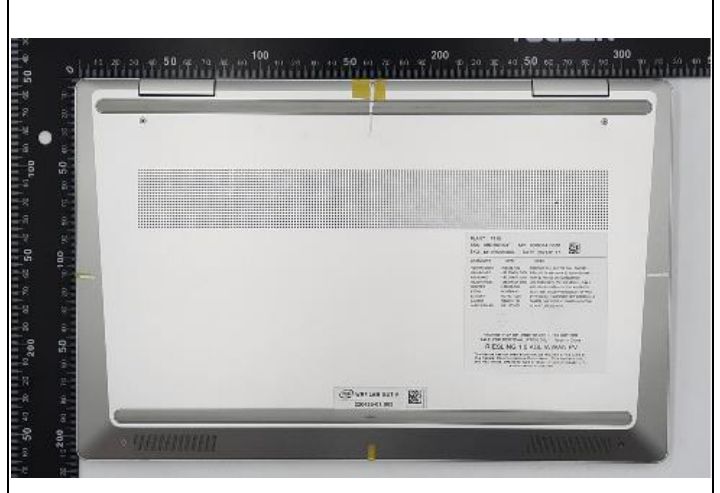
Sample Laptop 220425-01.S04



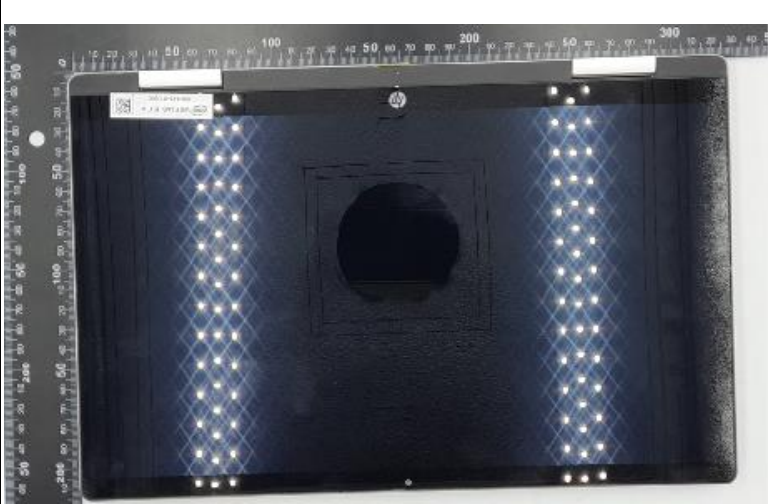
Sample Front 220425-01.S01



Sample 220425-01.S01



Sample Screen 220425-01.S01



Sample Keyboard 220425-01.S01



Sample Laptop 220425-01.S01



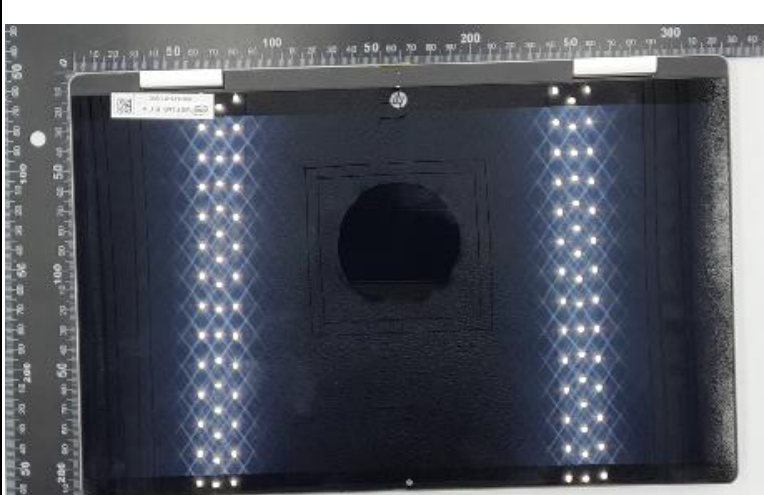
Sample Front 220425-01.S05



Sample Back 220425-01.S05



Sample Screen 220425-01.S05



Sample Keyboard 220425-01.S05



Sample Laptop 220425-01.S05



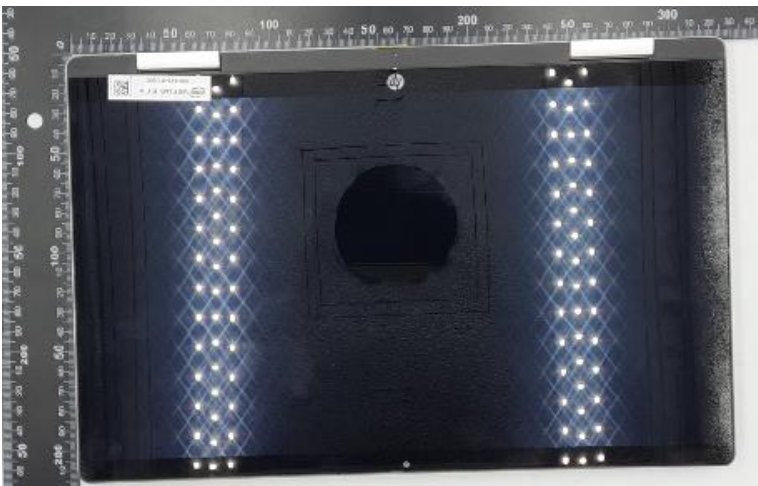
Sample Front 220425-01.S07



Sample Back 220425-01.S07



Sample Screen 220425-01.S07



Sample Keyboard 220425-01.S07



Sample Laptop 220425-01.S07

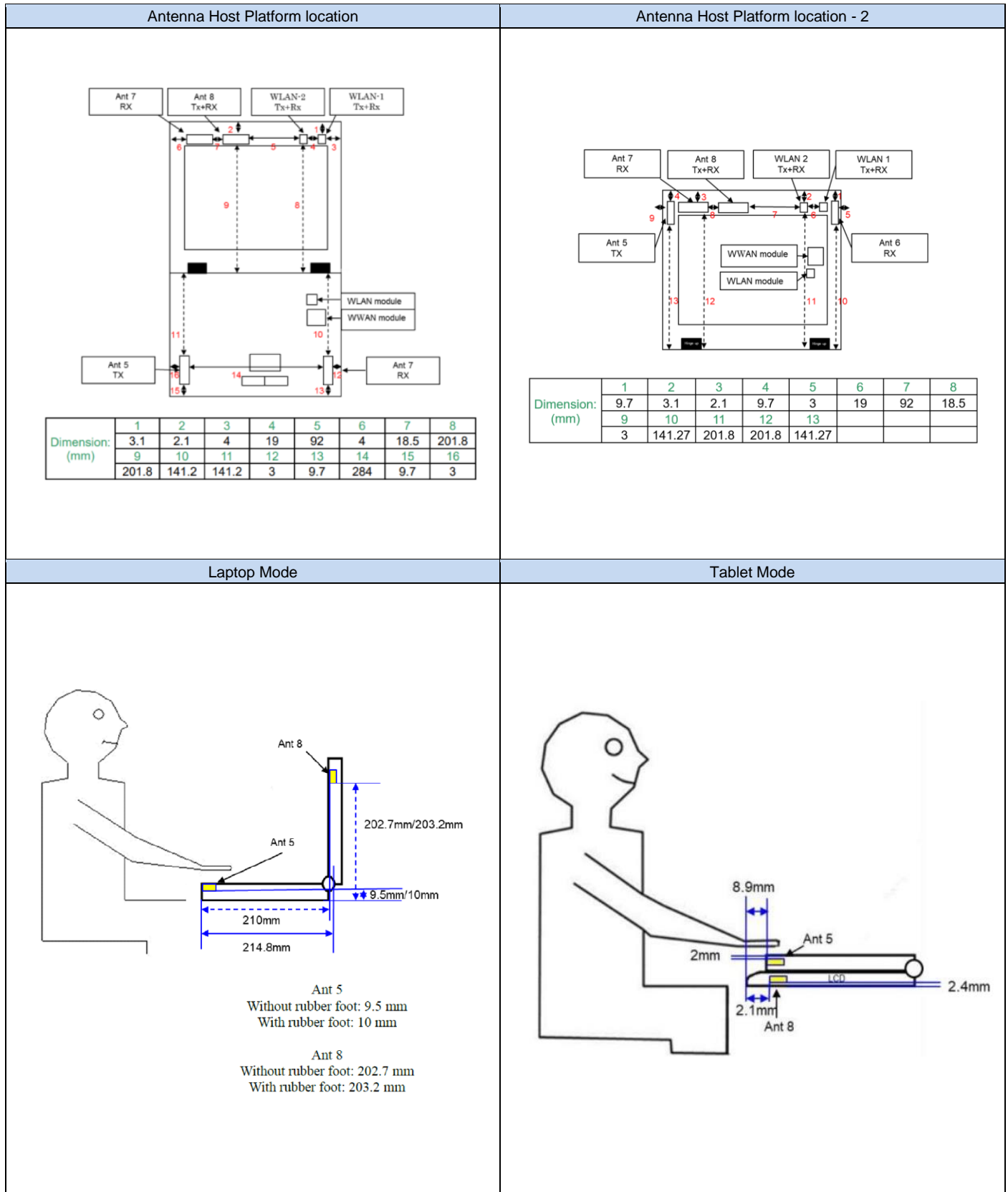


F.2 Test positions



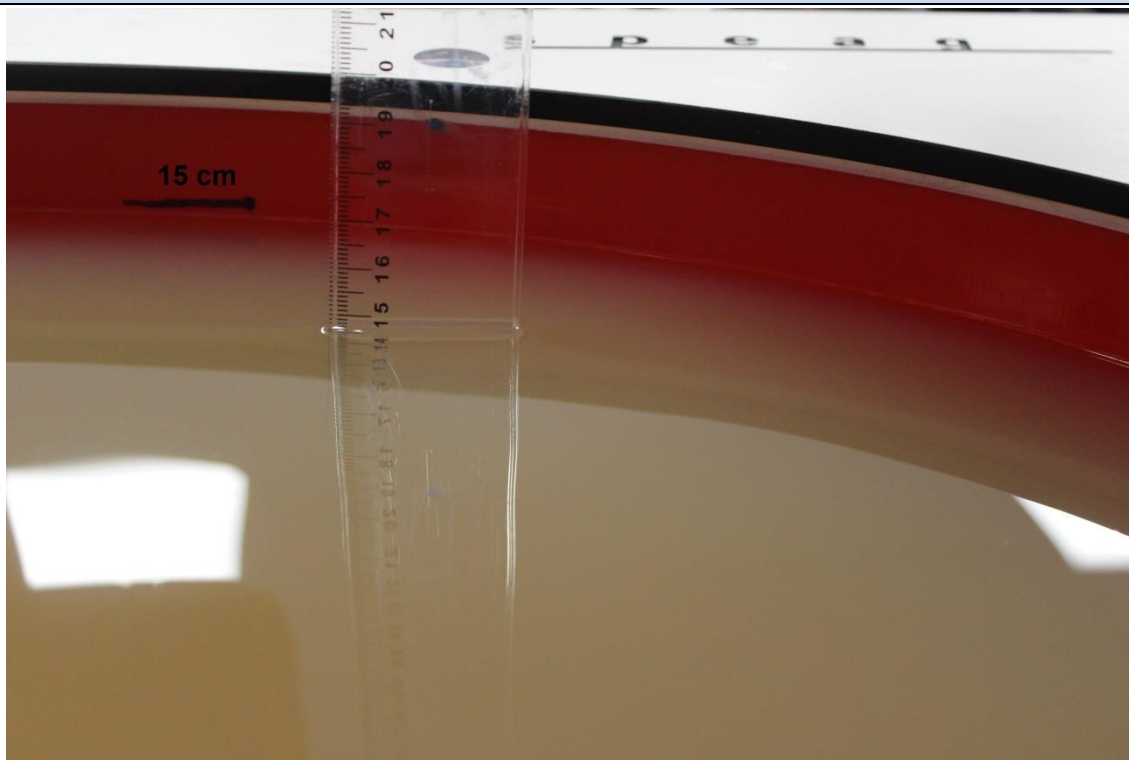
F.3 Antenna host platform location and adjacent edge positions relative to the body

All information (diagrams, values and dimensions) in this section were provided by the manufacturer

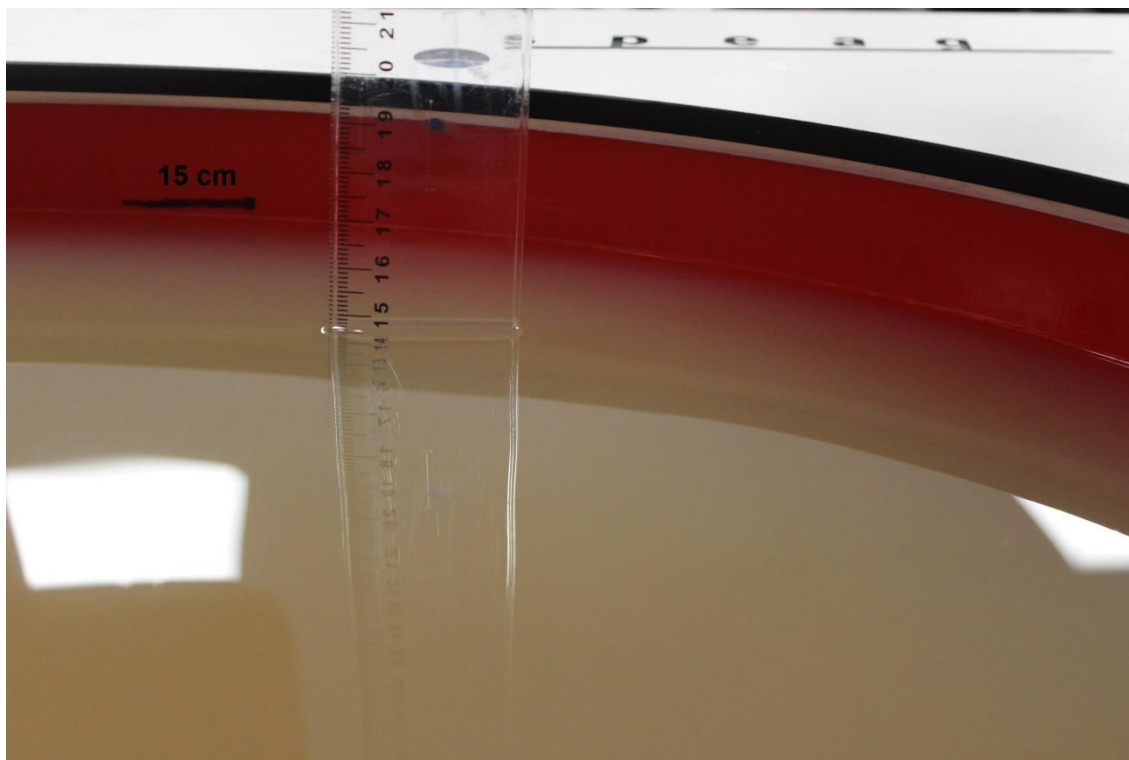


F.4 Phantom liquid level during measurements

ELI phantom Body liquid SAR Dasy SPEAG MBBL600-6000V6 Batch - 160630-01



ELI phantom Body liquid SAR Dasy SPEAG MBBL600-6000V6 Batch - 160630-01



End of the report

This page is intentionally left blank and marks the last page of the test report.