

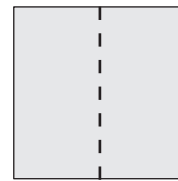
**Template Option**

2 Color, Consumer, Black + PMS 2995U

**Option 3 - FOLD: Center (Half)**

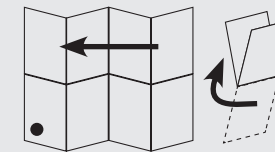
FOLDED: 148.5 mm x 210mm (5.84" x 8.26")

FLAT: 297 mm x 210 mm (11.69" x 8.26")



**Important:** The folds in this section are only for the Multi-lingual (ML) posters. The folds are not for SL posters.

ML FOLD: Letter



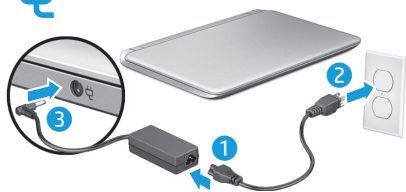
**ML FOLD: Letter**

FLAT: 594 mm x 367.5 mm (23.38" x 14.47")

FOLDED: 148.5 mm x 183.75 mm (5.84" x 7.235")

# Setup Instructions

1



2

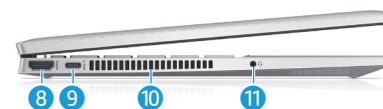
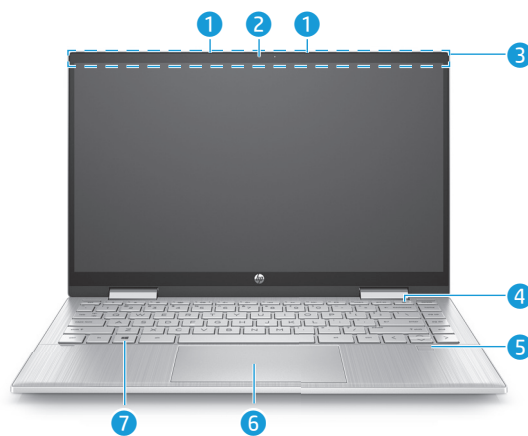


3

Select the network icon in the lower-right corner of the taskbar, and then connect to one of the available networks.

To set up a WLAN and connect to the internet, you need a broadband modem (DSL or cable, purchased separately), internet service purchased from an internet service provider, and a wireless router (purchased separately).

Your computer has a preinstalled battery. Before you press the power button to turn on the computer for the first time, be sure that the AC adapter is connected to the computer.



- 1 Internal microphones (2)
- 2 Camera
- 3 Wireless antenna(s)\*
- 4 Power button
- 5 Fingerprint reader\*
- 6 Touchpad
- 7 Windows® key

\* Select products only.

Actual computer color, features, feature locations, icon labels, and accessories might vary from the image depicted.

- 8 HDMI port
- 9 USB Type-C® power connector port with HP Sleep and Charge
- 10 Vent
- 11 Audio-out (headphone)/ Audio-in (microphone) combo jack
- 12 Memory card reader
- 13 USB ports (2)
- 14 Power connector

## Find more information

**Windows products** To learn more about Windows and to access help topics, select the **Start** button , and then select **Tips** or **Get Help** (requires a network connection).

To access the user guides, type **HP Documentation** in the taskbar search box, and then select **HP Documentation**.

**Linux® products** To access the user guides, double-click the **HP Documents** icon on the desktop.

**FreeDOS products** To access the user guides, select **HP Documents** on the **Boot Menu**.

To view the latest information available for your new computer, including how-to topics, updates, accessories, cleaning, upgrades, and more, go to <http://www.hp.com/support>, and follow the instructions to find your product. Then select **Manuals**.

A *User Guides* disc is included with some products.

DRAFT

Replace this box with PI statement as per spec.



M34529-001



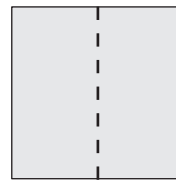
**Template Option**

2 Color, Consumer, Black + PMS 2995U

**Option 3 - FOLD: Center (Half)**

FOLDED: 148.5 mm x 210mm (5.84" x 8.26")

FLAT: 297 mm x 210 mm (11.69" x 8.26")

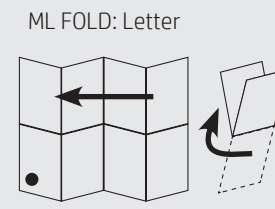


**Important:** The folds in this section are only for the Multi-lingual (ML) posters. The folds are not for SL posters.

**ML FOLD: Letter**

FLAT: 594 mm x 367.5 mm (23.38" x 14.47")

FOLDED: 148.5 mm x 183.75 mm (5.84" x 7.235")



## Windows Start screen

Depending on your product, you can use a keyboard and mouse, a touchpad, or a touch screen to navigate the Windows Start screen.



**Find Settings**

Select the **Start** button , and then select the **Settings** icon .



**Shut down your computer**

Select the **Start** button , select the **Power** icon , and then select **Shut down**.



**Display the Start menu**

Select the **Start** button .



**Search**

In the taskbar search box, begin typing the name of an app, setting, file, or internet topic.



**Switch between open apps**

Select the **Task view** icon .



The features and appearance of the Windows screen vary, depending on the version of the operating system and additional software installed on your computer.

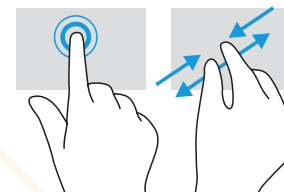
## Locate system information

System information is provided on the service label or found in one of the following locations: the bottom of the computer, the back of the display, inside the battery bay, or beneath the service door. The label may be in paper form or imprinted on the product.

In some Windows products, you can briefly press the **fn+esc** key combination to display the System Information screen.

## Gestures for touchpad or touch screen

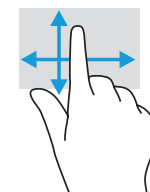
**Touchpad or touch screen**



Tap or double-tap to select

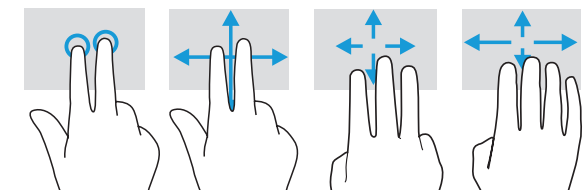
Pinch zoom

**Touch screen only**



Slide to scroll

**Touchpad only**



Tap to right-click

Slide to navigate

Multifeatured gestures



For details about multifeatured gestures, select **Start**, select **Settings**, select **Devices**, and then select **Touchpad**. Some computers support a touchscreen, but some computers, apps, and files might not support all touch gestures.

## Feedback on this document

To help us improve this document, please send any suggestions, comments, or errors to [doc.feedback@hp.com](mailto:doc.feedback@hp.com). Include the document part number (located near the bar code) when submitting your feedback.

## Contact support

To resolve a hardware or software problem, go to <http://www.hp.com/support>. Use this site to get more information about your product, including links to discussion forums and instructions on troubleshooting. You can also find information about how to contact HP and open a support case.



**WARNING:** To reduce the risk of electric shock:

- Plug the power cord into an AC outlet that is easily accessible at all times.
- If the power cord has a 3-pin attachment plug, plug the cord into a grounded (earthed) 3-pin outlet.

For more safety, regulatory, labeling, and battery disposal information, see the *Regulatory, Safety, and Environmental Notices* provided with your user guides. To locate the user guides for your computer, see the "Find more information" section of this poster.



**WARNING:** To reduce the risk of serious injury, read the *Safety & Comfort Guide* provided with your user guides. It describes proper workstation setup, and proper posture, health, and work habits for computer users. The *Safety & Comfort Guide* also provides important electrical and mechanical safety information. The *Safety & Comfort Guide* is also available on the web at <http://www.hp.com/ergo>.



**WARNING:** To reduce the possibility of heat-related injuries or of overheating the computer, do not place the computer directly on your lap or obstruct the computer air vents. Use the computer only on a hard, flat surface. Do not allow another hard surface, such as an adjoining optional printer, or a soft surface, such as pillows or rugs or clothing, to block airflow. Also, do not allow the AC adapter to contact the skin or a soft surface, such as pillows or rugs or clothing, during operation. The computer and the AC adapter comply with the user-accessible surface temperature limits defined by applicable safety standards. Under some conditions or certain usage models you may experience higher surface temperatures. Should you experience increased surface temperature, please use caution and follow the guidelines in the HP *Safety & Comfort Guide*.

**SIMPLIFIED DECLARATION OF CONFORMITY**

The Regulatory Model Number (RMN) for this equipment is TPN-W146. Hereby, HP declares that this equipment is in compliance with Directive 2014/53/EU. To view the Declaration of Conformity for this equipment, go to [www.hp.eu/certificates](http://www.hp.eu/certificates) and search using this equipment's RMN. **UK:** Hereby, HP declares that this equipment is in compliance with the relevant statutory requirements. To view the Declaration of Conformity for this equipment, go to [www.hp.eu/certificates](http://www.hp.eu/certificates) and search using this equipment's RMN.

**SOFTWARE TERMS**

By installing, copying, downloading, or otherwise using any software product preinstalled on this computer, you agree to be bound by the terms of the HP End User License Agreement (EULA). If you do not accept these license terms, your sole remedy is to return the entire unused product (hardware and software) within 14 days for a full refund subject to the refund policy of your seller.

For any further information or to request a full refund of the price of the computer, please contact your seller.

**LIMITED WARRANTY**

In some countries or regions, HP may provide a printed warranty in the box. For countries or regions where the warranty is not provided in printed format, you can request a copy from <http://www.hp.com/go/orderdocuments>. For products purchased in Asia Pacific, you can write to HP at POD, PO Box 161, Kitchener Road Post Office, Singapore 912006. Include your product name, and your name, phone number, and postal address.

Your computer is protected by a free subscription to McAfee LiveSafe™ service for a limited time from the first time you use the computer. You will have the option to purchase McAfee LiveSafe service upon expiration of the subscription. McAfee LiveSafe service helps protect your identity, your data, and your devices with a single subscription.\*

\* Select products only.

© Copyright 2021 HP Development Company, L.P.

Linux® is the registered trademark of Linus Torvalds in the U.S. and other countries. McAfee LiveSafe is a trademark of McAfee, Inc. in the United States and other countries. Windows is either a registered trademark or trademark of Microsoft Corporation in the United States and/or other countries. USB Type-C® and USB-C® are registered trademarks of USB Implementers Forum.

Not all features are available in all editions of Windows. This computer may require upgraded and/or separately purchased hardware, drivers, and/or software to take full advantage of Windows functionality. See <http://www.microsoft.com> for details.

The information contained herein is subject to change without notice. The only warranties for HP products and services are set forth in the express warranty statements accompanying such products and services. Nothing herein should be construed as constituting an additional warranty. HP shall not be liable for technical or editorial errors or omissions contained herein.

First Edition: February 2021