

Regulatory WLAN Antenna Information

Platform information					
Brand	ODM	RMN	Intel platform (ex: Yes, No or NA)	Platform type (ex: regular NB, convertible PC, AIO...etc)	*SAR minimum separation (mm)
HP Inc.	Compal	TPN-C173	Yes	Convertible PC	3.6

*****Please fill in exact product model name and make sure the model name is visible on product cover or any parts for end users recognize for authority inspection.

Antenna information			
Vendor	Type	Antenna Part number (Main/Tx2)	Antenna Part number (Aux/Tx1)
HONG-BO	PIFA	260-24455	260-24456

Peak gain w/ cable loss (dBi)*										
	2.4GHz 2400-2483.5 MHz	5.2GHz 5150-5250MHz	5.3GHz 5250-5350MHz	5.6GHz 5470-5725MHz	5.8GHz 5725-5850MHz	5.9GHz 5850-5895MHz	6.2GHz 5925-6425MHz	6.5GHz 6425-6525MHz	6.7GHz 6525-6875MHz	7.0 GHz 6875-7125MHz
Main	1.47	1.31	0.37	-0.22	-1.52	0.23	1.49	0.64	0.67	0.75
Aux	1.75	0.64	1.1	0.98	0.38	-0.13	0.42	0.64	0.64	0.98

Module Information	
Model	Form factor and suffixes
MT7922A22M	Mediatek Tequini2 RZ616 Wi-Fi 6E +Bluetooth 5.3 M.2 2230 AIM-T 160MHz PCI-e+USB WW WLAN
MT7925B22M	Mediatek Torres MT7925 M.2 2230 Wi-Fi 7 +Bluetooth 5.4 WW WLAN

Antenna vendor Address
4 F., No. 143, Xinhua 1st Rd., Neihu Dist., Taipei City 11494, Taiwan (R.O.C.)

Table of contents

1. Applicable test method
2. Test & System Description
 - a. Test setup
 - b. Equipment list
3. Setup photo

[Section 1. Antenna Assembly Specifications](#)

[Section 2. Dimensioned Photos or Drawings of Antennas](#)

[Section 3. Radiation characteristics of antenna loaded in Host Platform](#)

[Section 4. Antenna Host Platform Location Information](#)

[Section 5. Antenna dimensional information for SAR evaluation](#)

[Section 6. Diagram Example of Co-Location Antenna Separation](#)

1. **Applicable test methods**

ETS-Lindgren AMS-8500 system is 3D fully anechoic chamber, it is applied to the “Conical Cut test method”, the detail description is described as below.

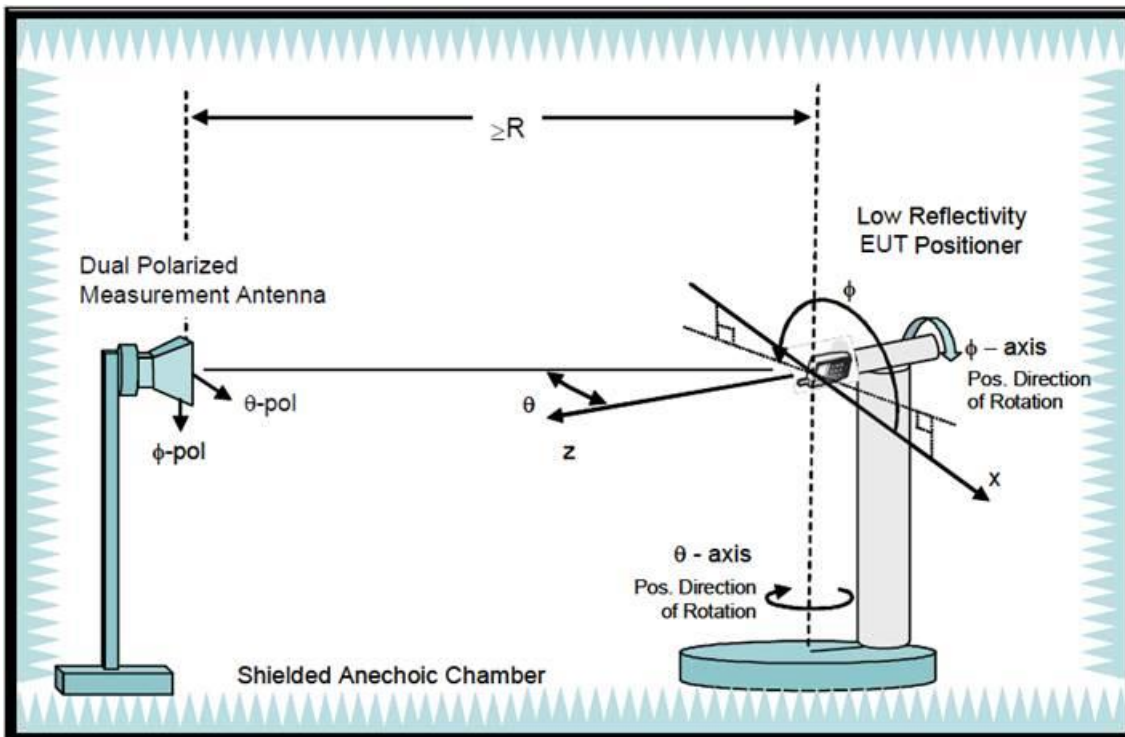
The Conical Cut method requires the ability of the Measurement Antenna to be physically rotated in the theta plane (overhead) of the EUT for implementations using a single Measurement Antenna, Eleven conical cuts are required to capture data at every 15 degrees from the EUT, with the top (0 degrees) and bottom (180 degrees) cuts not being measured. Typically, the EUT will remain affixed to a turntable during the entire measurement process. The Measurement Antenna will be positioned at a starting theta angle. The EUT will then be rotated around the full 360 degrees of phi rotation. The Measurement Antenna will then be positioned at the next theta angle, and the process repeated.

		θ -Axis	Φ -Axis
Passive	Step size	15°~165° step: 15°	0°~345° step: 15°
	N / M (Points)	12	24

2. **Test & System Description**

a. Test setup

Typical Setup for ETS-Lindgren AMS-8500:



b. Equipment list

Equipment Description	Manufacturer	Identification no.	Current calibration Date	Next calibration date
Network analyzer	Agilent	E5071C	2023/01/07	2024/01/06
Measurement software	ETS-Lindgren	EMQuest	N/A	N/A
Multi axis positioning system(MAPSTM)	ETS-Lindgren	MCO 2115	N/A	N/A
Multi axis positioning system(MAPSTM)	ETS-Lindgren	EMCO 2110	N/A	N/A
MAPSTM controller	ETS-Lindgren	EMCO 2090	N/A	N/A
Horn antenna	ETS-Lindgren	3164-10	2023/03/03	2024/03/02
ETS OTA Chamber	ETS-Lindgren	AMS-8500	2023/03/03	2024/03/02
Cable	ETS-Lindgren	RFC SMS-100-NMR Series	N/A	N/A

Note: Chamber calibration included full set of implement

Antenna Information

Section 1. Antenna Assembly Specifications

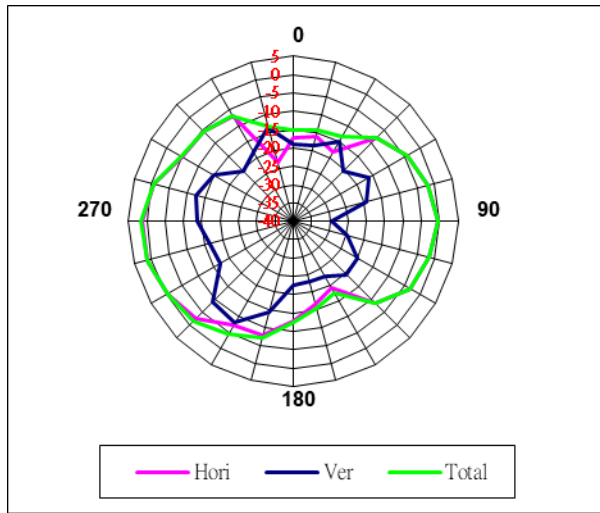
1A Antenna Part Number	1B Manufacturer	1C Antenna Type	1D Cable Assembly Part Number and Information	Freq Range MHz	1E * Peak Gain W/ Cable loss (dBi)	1F Peak Gain w/o Cable Loss (dBi)	1G Max VSWR	1H Cable Loss (dB)
P/N:260-24455 Main Antenna (Tx2)	HONG-BO	PIFA	(P/N: 20565-001R-13) 50 ohm Coaxial length:325.5mm diameter: 1.13mm Black Connector: IPEX MHF-4L Plug	2400-2495	1.47	2.38	3.5	0.91
				5150-5250	1.31	2.66	4	1.35
				5250-5350	0.37	1.73	4	1.36
				5470-5725	-0.22	1.18	4	1.4
				5725-5850	-1.52	-0.11	4	1.41
				5850-5895	0.23	1.65	4	1.42
				5925-6425	1.49	2.99	4	1.5
				6425-6525	0.64	2.15	4	1.51
				6525-6875	0.67	2.24	4	1.57
6875-7125	0.75	2.36	4	1.61				
P/N: 260-24456 Aux Antenna (Tx1)	HONG-BO	PIFA	(P/N: 20632-001R-37) 50 ohm Coaxial length:415.5mm diameter: 1.37mm Black Connector: IPEX MHF-4L Plug	2400-2495	1.75	2.73	3.5	0.98
				5150-5250	0.64	2.08	4	1.44
				5250-5350	1.10	2.56	4	1.46
				5470-5725	0.98	2.48	4	1.5
				5725-5850	0.38	1.89	4	1.51
				5850-5895	-0.13	1.39	4	1.52
				5925-6425	0.42	2.03	4	1.61
				6425-6525	0.64	2.27	4	1.63
				6525-6875	0.64	2.33	4	1.69
6875-7125	0.98	2.70	4	1.72				

Section 3. Radiation characteristics of antenna loaded in Host Platform

Main Antenna

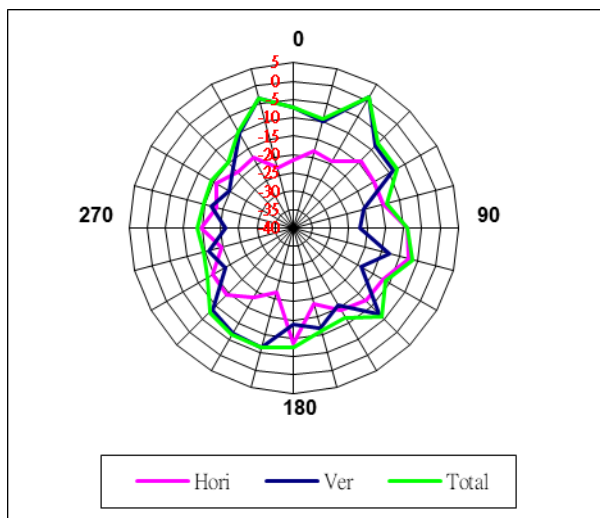
Max Antenna 2D Radiation Pattern 2400 – 2495 MHz

Frequency (MHz)	Horizontal+ Vertical (dBi) peak (dBi)
2400-2495	1.47



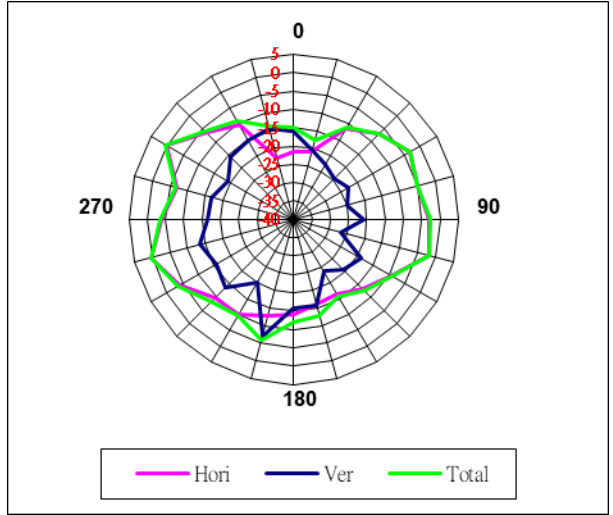
Max Antenna 2D Radiation Pattern 5150-5250 MHz

Frequency (MHz)	Horizontal+ Vertical (dBi) peak (dBi)
5150-5250	1.31



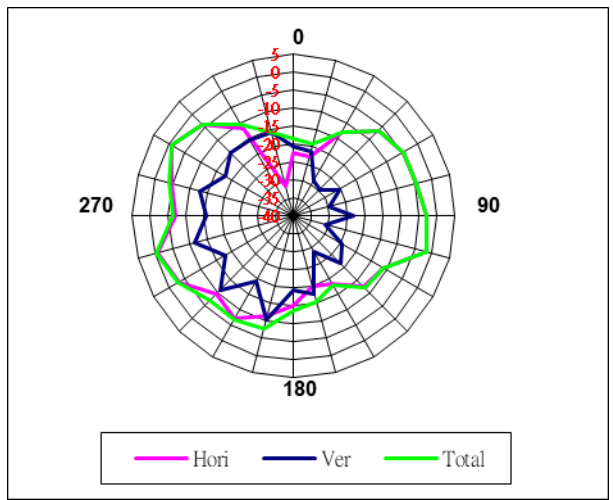
Max Antenna 2D Radiation Pattern 5250-5350 MHz

Frequency (MHz)	Horizontal+ Vertical (dBi) peak (dBi)
5250-5350	0.37



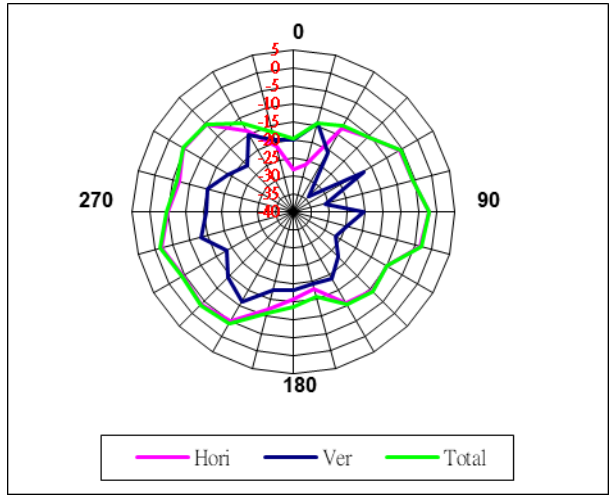
Max Antenna 2D Radiation Pattern 5470-5725 MHz

Frequency (MHz)	Horizontal+ Vertical (dBi) peak (dBi)
5470-5725	-0.22



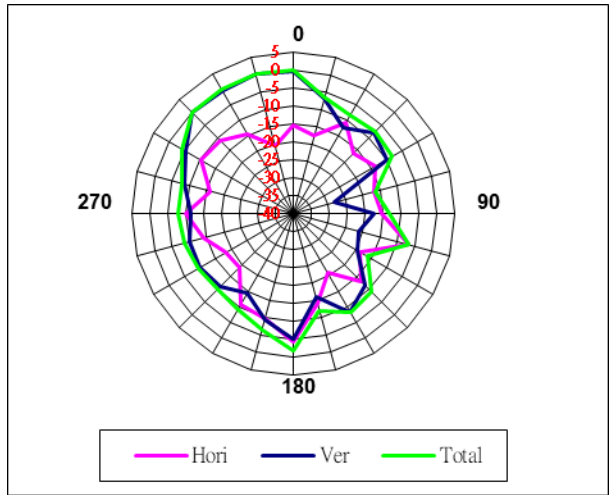
Max Antenna 2D Radiation Pattern 5725-5850 MHz

Frequency (MHz)	Horizontal+ Vertical (dBi) peak (dBi)
5725-5850	-1.52



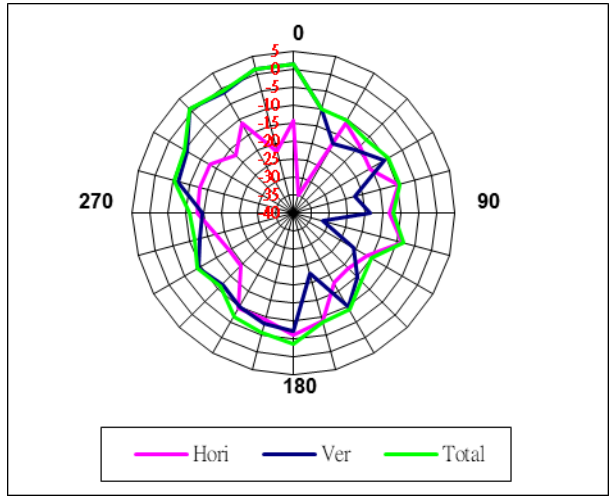
Max Antenna 2D Radiation Pattern 5850-5895 MHz

Frequency (MHz)	Horizontal+ Vertical (dBi) peak (dBi)
5850-5895	0.23



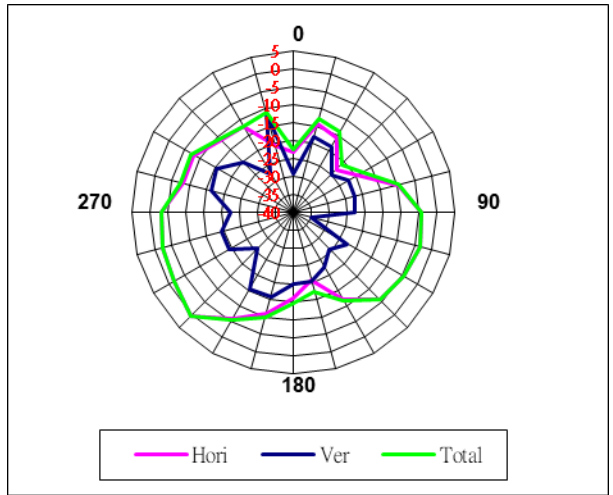
Max Antenna 2D Radiation Pattern 5925-6425 MHz

Frequency (MHz)	Horizontal+ Vertical (dBi) peak (dBi)
5925-6425	1.49



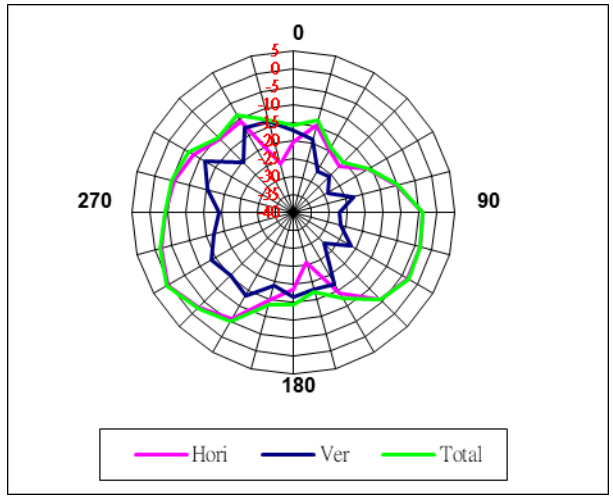
Max Antenna 2D Radiation Pattern 6425-6525 MHz

Frequency (MHz)	Horizontal+ Vertical (dBi) peak (dBi)
6425-6525	0.64



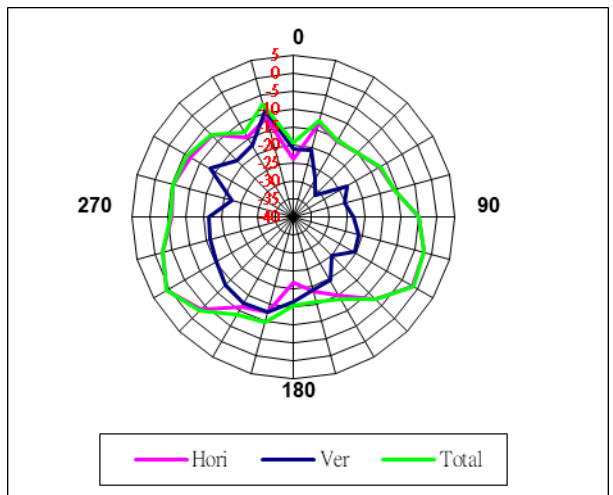
Max Antenna 2D Radiation Pattern 6525-6875 MHz

Frequency (MHz)	Horizontal+ Vertical (dBi) peak (dBi)
6525-6875	0.67



Max Antenna 2D Radiation Pattern 6875-7125 MHz

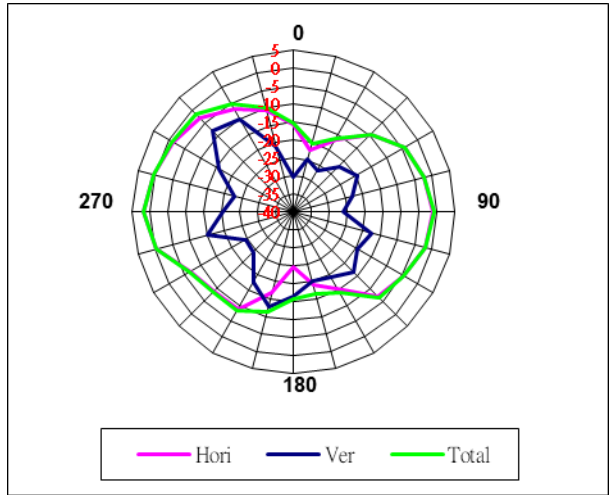
Frequency (MHz)	Horizontal+ Vertical (dBi) peak (dBi)
6875-7125	0.75



Auxiliary Antenna

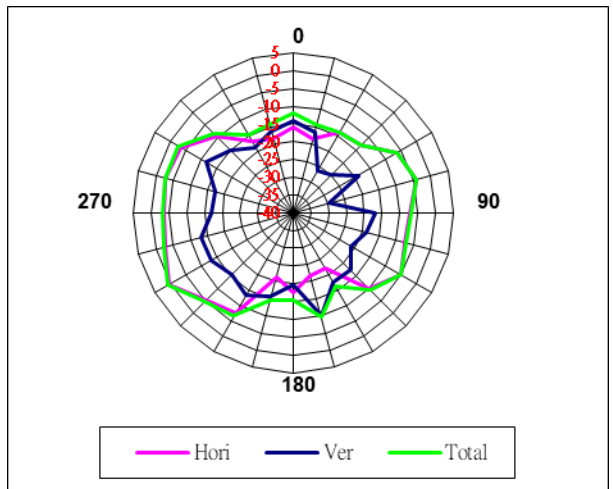
Max Antenna 2D Radiation Pattern 2400 – 2483.5 MHz

Frequency (MHz)	Horizontal+ Vertical (dBi) peak (dBi)
2400-2483.5	1.75



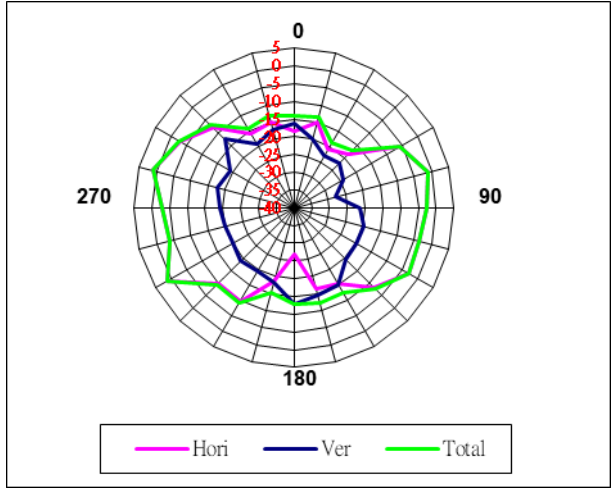
Max Antenna 2D Radiation Pattern 5150-5250 MHz

Frequency (MHz)	Horizontal+ Vertical (dBi) peak (dBi)
5150-5250	0.64



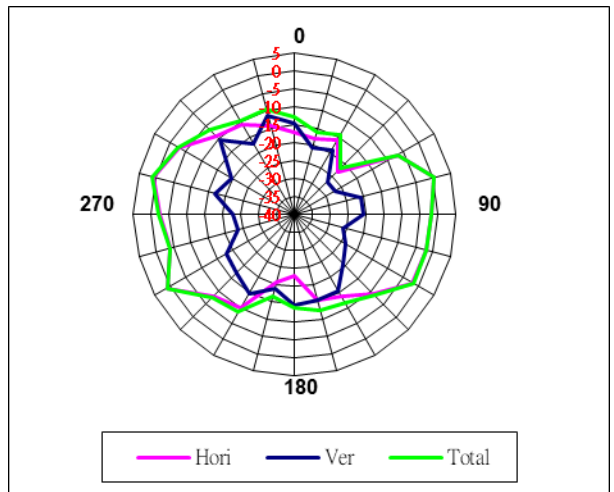
Max Antenna 2D Radiation Pattern 5250-5350 MHz

Frequency (MHz)	Horizontal+ Vertical (dBi) peak (dBi)
5250-5350	1.10



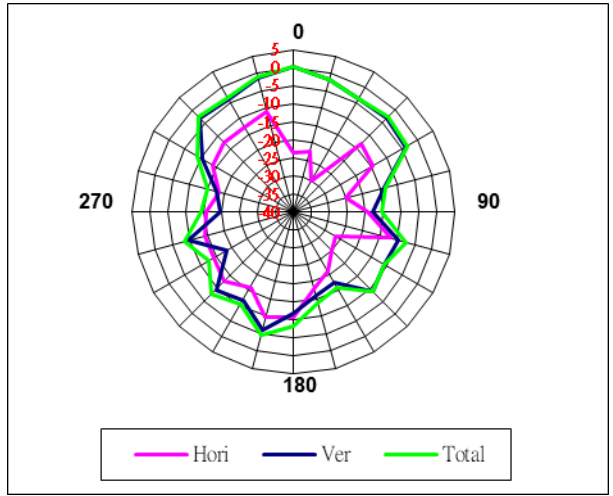
Max Antenna 2D Radiation Pattern 5470-5725 MHz

Frequency (MHz)	Horizontal+ Vertical (dBi) peak (dBi)
5470-5725	0.98



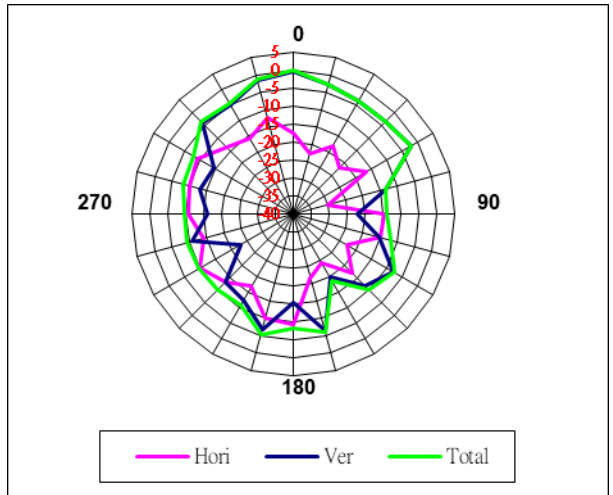
Max Antenna 2D Radiation Pattern 5725-5850 MHz

Frequency (MHz)	Horizontal+ Vertical (dBi) peak (dBi)
5725-5850	0.38



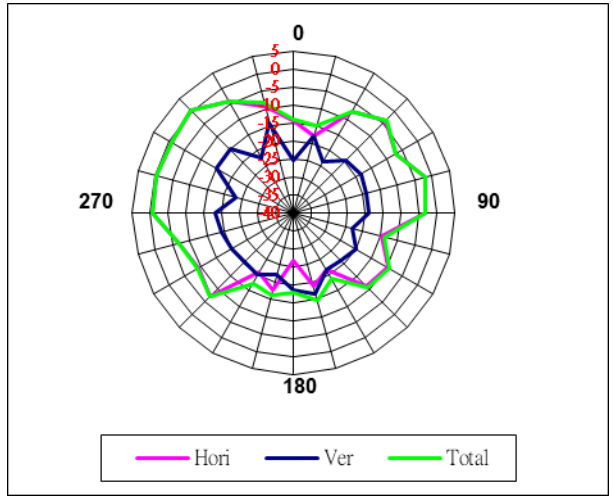
Max Antenna 2D Radiation Pattern 5850-5895 MHz

Frequency (MHz)	Horizontal+ Vertical (dBi) peak (dBi)
5850-5895	-0.13



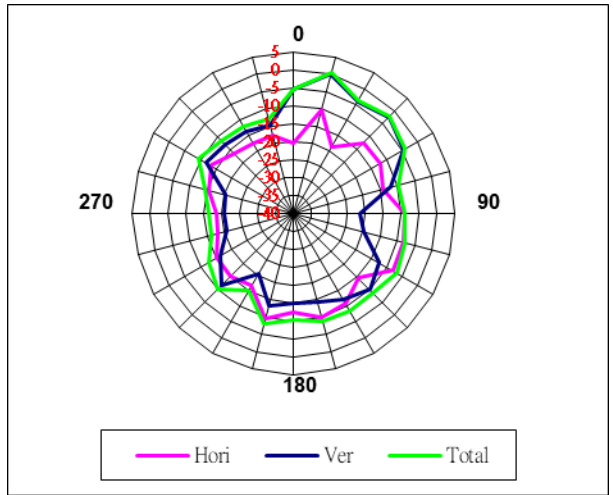
Max Antenna 2D Radiation Pattern 5925-6425 MHz

Frequency (MHz)	Horizontal+ Vertical (dBi) peak (dBi)
5925-6425	0.42



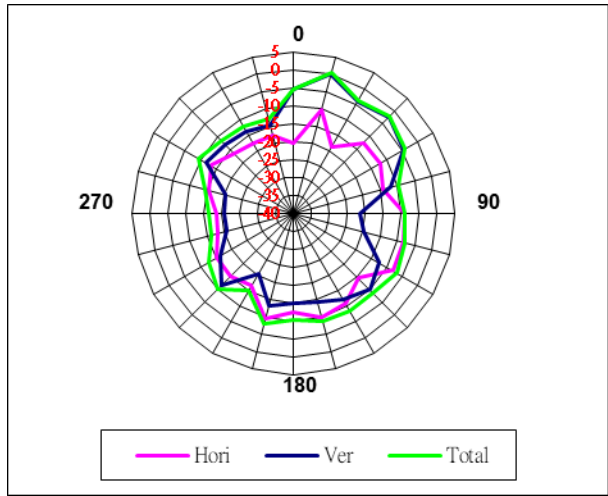
Max Antenna 2D Radiation Pattern 6425-6525 MHz

Frequency (MHz)	Horizontal+ Vertical (dBi) peak (dBi)
6425-6525	0.64



Max Antenna 2D Radiation Pattern 6525-6875 MHz

Frequency (MHz)	Horizontal+ Vertical (dBi) peak (dBi)
6525-6875	0.64



Max Antenna 2D Radiation Pattern 6875-7125 MHz

Frequency (MHz)	Horizontal+ Vertical (dBi) peak (dBi)
6875-7125	0.98

