

## System Check\_Head\_2450MHz

### DUT: D2450V2-929

Communication System: ; Frequency: 2450

Medium: HSL. Medium parameters used:  $f= 2450.0$  MHz;  $\sigma= 1.85$  S/m;  $\epsilon_r = 39.0$

Ambient Temperature: 23.5°C; Liquid Temperature: 22.5°C

#### DASY6 Configuration:

- Probe: EX3DV4 - SN7695; ConvF(8.24, 8.24, 8.24); Calibrated: 2021-11-19
- Sensor-Surface: 1.4 mm
- Electronics: DAE4 Sn1697; Calibrated: 2021-11-09
- Phantom: Twin-SAM V8.0 (30deg probe tilt); Serial: 1919; Section: Flat
- Measurement Software: cDASY6 V6.6.0.13926
- UID: , 0--
- MAIA: Area Scan: N/A; Zoom Scan: N/A

**Pin=50mW/Area Scan (40.0 mm x 96.0 mm):** Measurement Grid: 10.0 mm x 12.0 mm

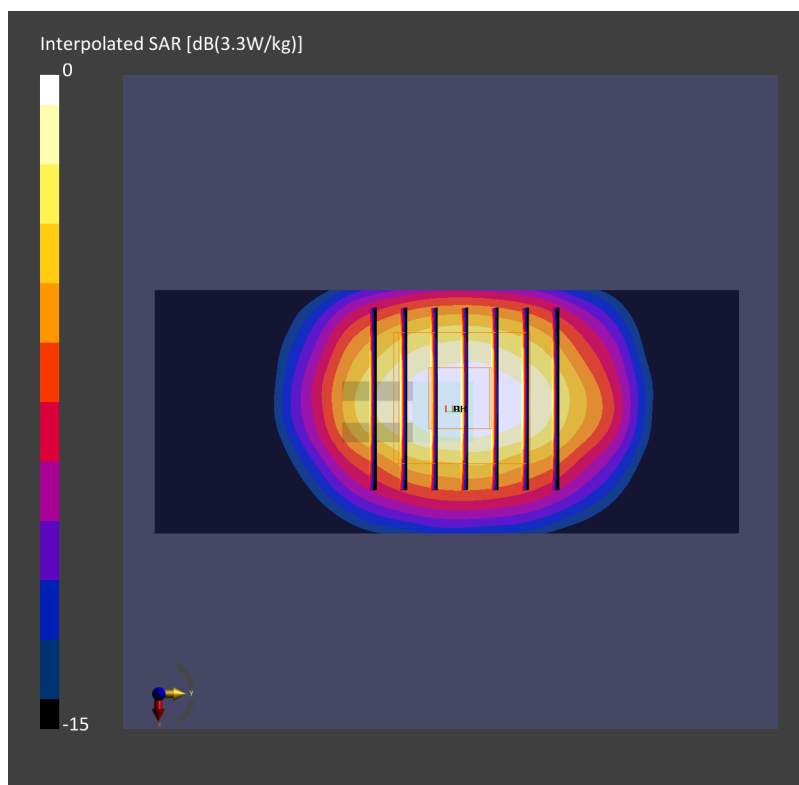
SAR (1g) = 2.54 W/kg; SAR (10g) = 1.19 W/kg;

**Pin=50mW/Zoom Scan (30.0 mm x 30.0 mm x 30.0 mm):** Measurement Grid: 5.0 mm x 5.0 mm x 1.5 mm

Power Drift = 0.01 dB

SAR (1g) = 2.58 W/kg; SAR (10g) = 1.21 W/kg;

psAPD (1.0cm<sup>2</sup>, sq) = 0 [W/m<sup>2</sup>]; psAPD (4.0cm<sup>2</sup>, sq) = 0 [W/m<sup>2</sup>]



## System Check\_Head\_5250MHz

### DUT: D5GV2-1128-5250

Communication System: ; Frequency: 5250

Medium: HSL\_5G\_220531 Medium parameters used:  $f = 5250.0$  MHz;  $\sigma = 4.61$  S/m;  $\epsilon_r = 35.4$

Ambient Temperature: 23.3°C; Liquid Temperature: 22.3°C

#### DASY6 Configuration:

- Probe: EX3DV4 - SN7695; ConvF(5.6, 5.6, 5.6); Calibrated: 2021-11-19
- Sensor-Surface: 1.4 mm
- Electronics: DAE4 Sn1697; Calibrated: 2021-11-09
- Phantom: ELI V8.0 (20deg probe tilt); Serial: 2153; Section: Flat
- Measurement Software: cDASY6 V6.6.0.13926
- UID: , 0--
- MAIA: Area Scan: N/A; Zoom Scan: N/A

**Pin=50mW/Area Scan (40.0 mm x 80.0 mm):** Measurement Grid: 10.0 mm x 10.0 mm

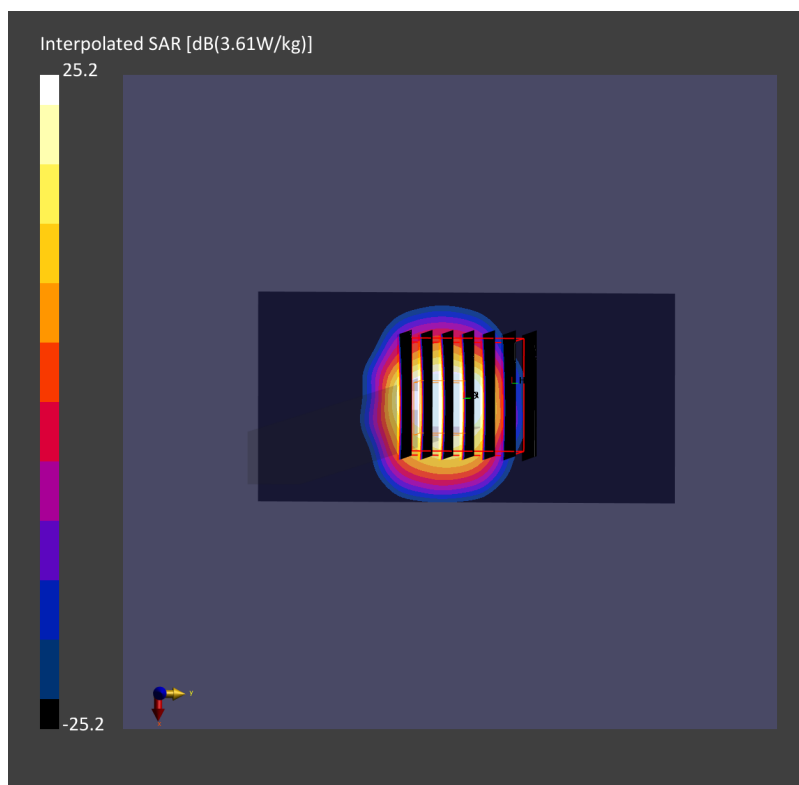
SAR (1g) = 3.19 W/kg; SAR (10g) = 0.988 W/kg;

**Pin=50mW/Zoom Scan (22.0 mm x 22.0 mm x 22.0 mm):** Measurement Grid: 4.0 mm x 4.0 mm x 1.4 mm

Power Drift = 0.02 dB

SAR (1g) = 3.61 W/kg; SAR (10g) = 1.06 W/kg;

psAPD (1.0cm<sup>2</sup>, sq) = 0 [W/m<sup>2</sup>]; psAPD (4.0cm<sup>2</sup>, sq) = 0



## System Check\_Head\_5600MHz

### DUT: D5GV2-1128-5600

Communication System: ; Frequency: 5600

Medium: HSL\_5G\_220526 Medium parameters used:  $f = 5600.0$  MHz;  $\sigma = 5.00$  S/m;  $\epsilon_r = 34.8$

Ambient Temperature: 23.5°C; Liquid Temperature: 22.5°C

#### DASY6 Configuration:

- Probe: EX3DV4 - SN7695; ConvF(4.82, 4.82, 4.82); Calibrated: 2021-11-19
- Sensor-Surface: 1.4 mm
- Electronics: DAE4 Sn1697; Calibrated: 2021-11-09
- Phantom: ELI V8.0 (20deg probe tilt); Serial: 2153; Section: Flat
- Measurement Software: cDASY6 V6.6.0.13926
- UID: , 0--
- MAIA: Area Scan: N/A; Zoom Scan: N/A

**Pin=50mW/Area Scan (40.0 mm x 80.0 mm):** Measurement Grid: 10.0 mm x 10.0 mm

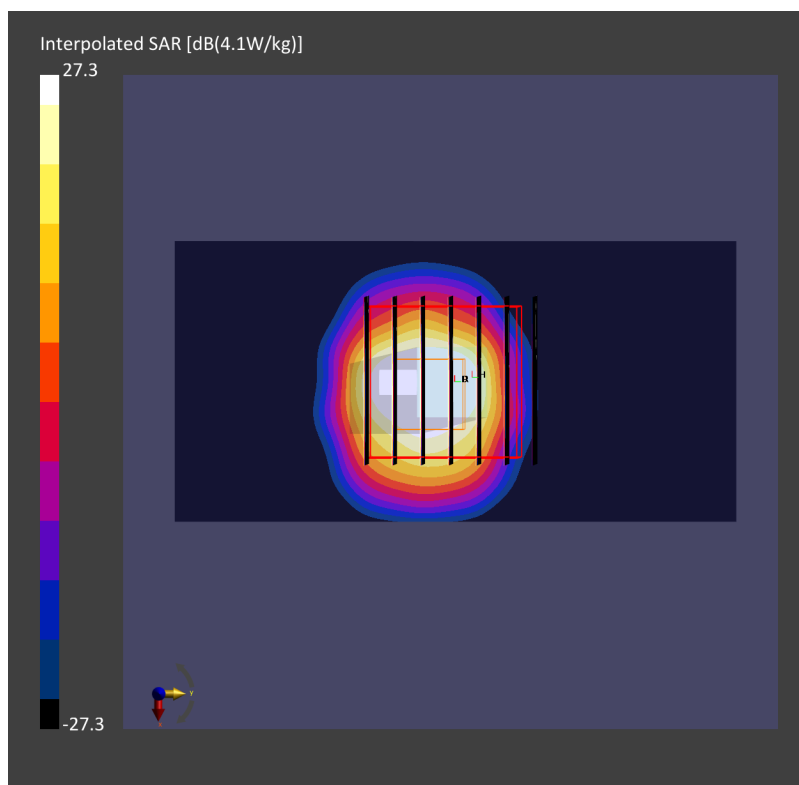
SAR (1g) = 3.62 W/kg; SAR (10g) = 1.11 W/kg;

**Pin=50mW/Zoom Scan (22.0 mm x 22.0 mm x 22.0 mm):** Measurement Grid: 4.0 mm x 4.0 mm x 1.4 mm

Power Drift = -0.03 dB

SAR (1g) = 4.10 W/kg; SAR (10g) = 1.13 W/kg;

psAPD (1.0cm<sup>2</sup>, sq) = 0 [W/m<sup>2</sup>]; psAPD (4.0cm<sup>2</sup>, sq) = 0



## System Check\_Head\_5600MHz

### DUT: D5GV2-1128-5600

Communication System: ; Frequency: 5600

Medium: HSL\_5G\_220531 Medium parameters used:  $f = 5600.0$  MHz;  $\sigma = 5.01$  S/m;  $\epsilon_r = 34.8$

Ambient Temperature: 23.3°C; Liquid Temperature: 22.3°C

#### DASY6 Configuration:

- Probe: EX3DV4 - SN7695; ConvF(4.82, 4.82, 4.82); Calibrated: 2021-11-19
- Sensor-Surface: 1.4 mm
- Electronics: DAE4 Sn1697; Calibrated: 2021-11-09
- Phantom: ELI V8.0 (20deg probe tilt); Serial: 2153; Section: Flat
- Measurement Software: cDASY6 V6.6.0.13926
- UID: , 0--
- MAIA: Area Scan: N/A; Zoom Scan: N/A

**Pin=50mW/Area Scan (40.0 mm x 80.0 mm):** Measurement Grid: 10.0 mm x 10.0 mm

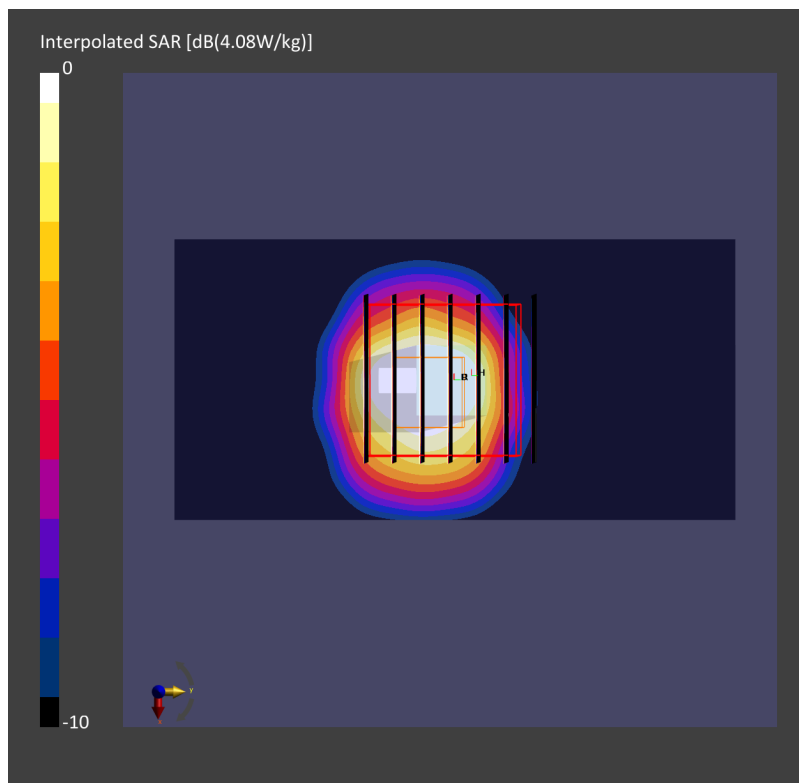
SAR (1g) = 3.62 W/kg; SAR (10g) = 1.11 W/kg;

**Pin=50mW/Zoom Scan (22.0 mm x 22.0 mm x 22.0 mm):** Measurement Grid: 4.0 mm x 4.0 mm x 1.4 mm

Power Drift = -0.01 dB

SAR (1g) = 4.08 W/kg; SAR (10g) = 1.13 W/kg;

psAPD (1.0cm<sup>2</sup>, sq) = 0 [W/m<sup>2</sup>]; psAPD (4.0cm<sup>2</sup>, sq) = 0



## System Check\_Head\_5750MHz

### DUT: D5GV2-1128-5750

Communication System: ; Frequency: 5750

Medium: HSL\_5G\_220526 Medium parameters used:  $f = 5750.0$  MHz;  $\sigma = 5.18$  S/m;  $\epsilon_r = 34.5$

Ambient Temperature: 23.5°C; Liquid Temperature: 22.5°C

#### DASY6 Configuration:

- Probe: EX3DV4 - SN7695; ConvF(5.05, 5.05, 5.05); Calibrated: 2021-11-19
- Sensor-Surface: 1.4 mm
- Electronics: DAE4 Sn1697; Calibrated: 2021-11-09
- Phantom: ELI V8.0 (20deg probe tilt); Serial: 2153; Section: Flat
- Measurement Software: cDASY6 V6.6.0.13926
- UID: , 0--
- MAIA: Area Scan: N/A; Zoom Scan: N/A

**Pin=50mW/Area Scan (40.0 mm x 80.0 mm):** Measurement Grid: 10.0 mm x 10.0 mm

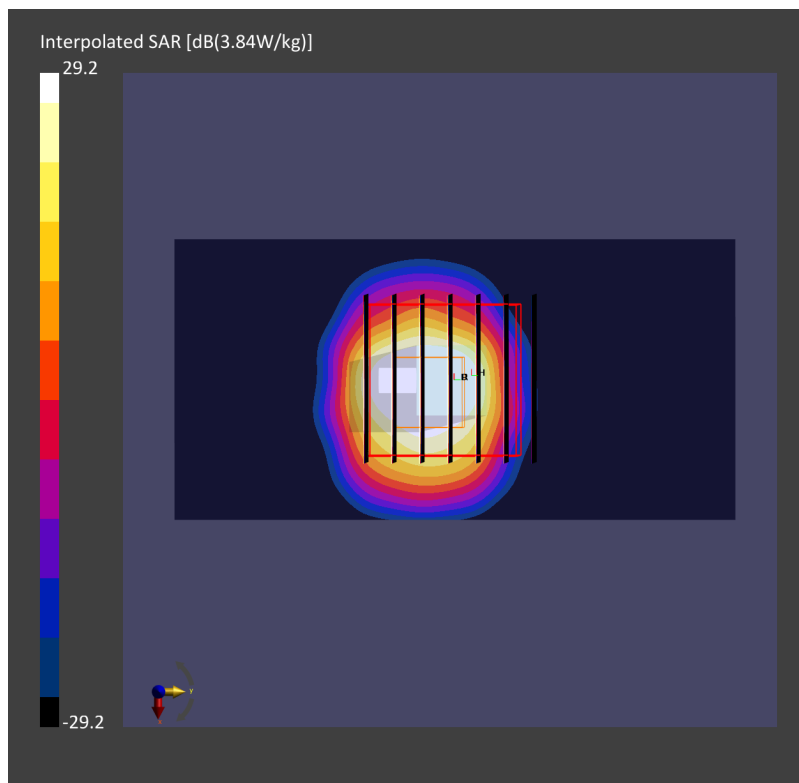
SAR (1g) = 3.42 W/kg; SAR (10g) = 1.05 W/kg;

**Pin=50mW/Zoom Scan (22.0 mm x 22.0 mm x 22.0 mm):** Measurement Grid: 4.0 mm x 4.0 mm x 1.4 mm

Power Drift = -0.01 dB

SAR (1g) = 3.84 W/kg; SAR (10g) = 1.06 W/kg;

psAPD (1.0cm<sup>2</sup>, sq) = 0 [W/m<sup>2</sup>]; psAPD (4.0cm<sup>2</sup>, sq) = 0



## System Check\_Head\_5750MHz

### DUT: D5GV2-1128-5750

Communication System: ; Frequency: 5750

Medium: HSL\_5G\_220531 Medium parameters used:  $f = 5750.0$  MHz;  $\sigma = 5.19$  S/m;  $\epsilon_r = 34.5$

Ambient Temperature: 23.3°C; Liquid Temperature: 22.3°C

#### DASY6 Configuration:

- Probe: EX3DV4 - SN7695; ConvF(5.05, 5.05, 5.05); Calibrated: 2021-11-19
- Sensor-Surface: 1.4 mm
- Electronics: DAE4 Sn1697; Calibrated: 2021-11-09
- Phantom: ELI V8.0 (20deg probe tilt); Serial: 2153; Section: Flat
- Measurement Software: cDASY6 V6.6.0.13926
- UID: , 0--
- MAIA: Area Scan: N/A; Zoom Scan: N/A

**Pin=50mW/Area Scan (40.0 mm x 80.0 mm):** Measurement Grid: 10.0 mm x 10.0 mm

SAR (1g) = 3.42 W/kg; SAR (10g) = 1.05 W/kg;

**Pin=50mW/Zoom Scan (22.0 mm x 22.0 mm x 22.0 mm):** Measurement Grid: 4.0 mm x 4.0 mm x 1.4 mm

Power Drift = -0.02 dB

SAR (1g) = 3.86 W/kg; SAR (10g) = 1.06 W/kg;

psAPD (1.0cm<sup>2</sup>, sq) = 0 [W/m<sup>2</sup>]; psAPD (4.0cm<sup>2</sup>, sq) = 0

