

FCC SAR Test Report

Report No. : SA190516C01-2
Applicant : HP Inc.
Address : 3390 East Harmony Road, Fort Collins, Colorado 80528, United States
Product : Notebook Computer
FCC ID : B94-AX200D2LZ
Brand : HP
Model No. : HSN-Q20C
Standards : FCC 47 CFR Part 2 (2.1093), IEEE C95.1:1992, IEEE Std 1528:2013
 KDB 865664 D01 v01r04, KDB 865664 D02 v01r02,
 KDB 248227 D01 v02r02, KDB 447498 D01 v06, KDB 616217 D04 v01r02
Sample Received Date : May 16, 2019
Date of Testing : Jun. 18, 2019 ~ Jun. 19, 2019
Lab Address : No. 47-2, 14th Ling, Chia Pau Vil., Lin Kou Dist., New Taipei City, Taiwan, R.O.C.
Test Location : No. 19, Hwa Ya 2nd Rd, Wen Hwa Vil, Kwei Shan Dist., Taoyuan City 33383, Taiwan (R.O.C)

CERTIFICATION: The above equipment have been tested by **Bureau Veritas Consumer Products Services (H.K.) Ltd., Taoyuan Branch – Lin Kou Laboratories**, and found compliance with the requirement of the above standards. The test record, data evaluation & Equipment Under Test (EUT) configurations represented herein are true and accurate accounts of the measurements of the sample’s SAR characteristics under the conditions specified in this report. It should not be reproduced except in full, without the written approval of our laboratory. The client should not use it to claim product certification, approval, or endorsement by TAF or any government agencies.

Prepared By : 

 Rona Chen / Specialist

Approved By : 

 Gordon Lin / Assistant Manager



FCC Accredited No.: TW0003

This report is for your exclusive use. Any copying or replication of this report to or for any other person or entity, or use of our name or trademark, is permitted only with our prior written permission. This report sets forth our findings solely with respect to the test samples identified herein. The results set forth in this report are not indicative or representative of the quality or characteristics of the lot from which a test sample was taken or any similar or identical product unless specifically and expressly noted. Our report includes all of the tests requested by you and the results thereof based upon the information that you provided to us. You have 60 days from date of issuance of this report to notify us of any material error or omission caused by our negligence, provided, however, that such notice shall be in writing and shall specifically address the issue you wish to raise. A failure to raise such issue within the prescribed time shall constitute your unqualified acceptance of the completeness of this report, the tests conducted and the correctness of the report contents. Unless specific mention, the uncertainty of measurement has been explicitly taken into account to dedare the compliance or non-compliance to the specification.

Table of Contents

Release Control Record	3
1. Summary of Maximum SAR Value	4
2. Description of Equipment Under Test	5
3. SAR Measurement System	6
3.1 Definition of Specific Absorption Rate (SAR)	6
3.2 SPEAG DAS52 System	6
3.2.1 Robot	7
3.2.2 Probes	8
3.2.3 Data Acquisition Electronics (DAE)	8
3.2.4 Phantoms	9
3.2.5 Device Holder	10
3.2.6 System Validation Dipoles	10
3.2.7 Tissue Simulating Liquids	11
3.3 SAR System Verification	13
3.4 SAR Measurement Procedure	14
3.4.1 Area & Zoom Scan Procedure	14
3.4.2 Volume Scan Procedure	14
3.4.3 Power Drift Monitoring	15
3.4.4 Spatial Peak SAR Evaluation	15
3.4.5 SAR Averaged Methods	15
4. SAR Measurement Evaluation	16
4.1 EUT Configuration and Setting	16
4.2 EUT Testing Position	19
4.2.1 Body Exposure Conditions	19
4.2.2 SAR Test Exclusion Evaluations	21
4.3 Tissue Verification	23
4.4 System Validation	23
4.5 System Verification	23
4.6 Maximum Output Power	24
4.6.1 Maximum Target Conducted Power	24
4.6.2 Measured Conducted Power Result	34
4.7 SAR Testing Results	36
4.7.1 SAR Test Reduction Considerations	36
4.7.2 SAR Results for Body Exposure Condition	37
4.7.3 SAR Measurement Variability	39
4.7.4 Simultaneous Multi-band Transmission Evaluation	40
5. Calibration of Test Equipment	42
6. Measurement Uncertainty	43
7. Information of the Testing Laboratories	44

Appendix A. SAR Plots of System Verification
Appendix B. SAR Plots of SAR Measurement
Appendix C. Calibration Certificate for Probe and Dipole
Appendix D. Photographs of EUT and Setup

1. Summary of Maximum SAR Value

Equipment Class	Mode	Highest SAR-1g Body (W/kg)	
		Tablet Mode	Laptop Mode
DTS	2.4G WLAN	0.93	0.12
NII	5.2G WLAN	1.09	N/A
	5.3G WLAN	N/A	0.35
	5.6G WLAN	0.82	0.83
	5.8G WLAN	0.97	1.03
DSS	Bluetooth	0.17	0.02

Highest Simultaneous Transmission SAR	Highest SAR-1g Body (W/kg)	
	Tablet Mode	Laptop Mode
	1.26	1.05

Note:

- The SAR criteria (**Head & Body: SAR-1g 1.6 W/kg, and Extremity: SAR-10g 4.0 W/kg**) for general population / uncontrolled exposure is specified in FCC 47 CFR part 2 (2.1093) and ANSI/IEEE C95.1-1992.2.

2. Description of Equipment Under Test

EUT Type	Notebook Computer
FCC ID	B94-AX200D2LZ
Brand Name	HP
Model Name	HSN-Q20C
Tx Frequency Bands (Unit: MHz)	WLAN : 2412 ~ 2472, 5180 ~ 5240, 5260 ~ 5320, 5500 ~ 5720, 5745 ~ 5825 Bluetooth : 2402 ~ 2480
Uplink Modulations	802.11b : DSSS 802.11a/g/n/ac/ax : OFDM Bluetooth : GFSK, $\pi/4$ -DQPSK, 8-DPSK
Maximum Tune-up Conducted Power (Unit: dBm)	Please refer to section 4.6.1 of this report
Antenna Type	PIFA Antenna
EUT Stage	Engineering Sample

Note:

- The information of module collocated in this EUT is listed as below.

Item	Brand Name	Model Name	Specification
WLAN/BT module	Intel® Wi-Fi 6 AX200	A X200D2WL	2T2R 802.11 a/b/g/n/ac/ax WLAN+ Bluetooth

- The antenna information is listed as below.

Antenna Type	Manufacturer	Parts Number	WLAN Antenna Gain			
			WLAN 2.4 GHz	WLAN 5.15~5.35 GHz	WLAN 5.47~5.725 GHz	WLAN 5.725~5.85 GHz
Laptop Mode						
PIFA	INPAQ	Tx1 Ant.: DQ6LBLB0205 (WA-P-LTE 15LTE 15LBLB-02-002)	Tx1: 0.93	Tx1: 0.54	Tx1: -1.55	Tx1: -1.07
		Tx2 Ant.: DQ6LBLB0205 (WA-P-LTE 15LTE 15LBLB-02-002)	Tx2: 1.66	Tx2: 0.41	Tx2: 0.56	Tx2: -0.21
Tablet Mode						
PIFA	INPAQ	Tx1 Ant.: DQ6LBLB0205 (WA-P-LTE 15LTE 15LBLB-02-002)	Tx1: -0.36	Tx1: 2.64	Tx1: 2.21	Tx1: 2.61
		Tx2 Ant.: DQ6LBLB0205 (WA-P-LTE 15LTE 15LBLB-02-002)	Tx2: -1.79	Tx2: 2.58	Tx2: 1.64	Tx2: 1.29

- The above EUT information is declared by manufacturer and for more detailed features description please refers to the manufacturer's specifications or User's Manual.

3. SAR Measurement System

3.1 Definition of Specific Absorption Rate (SAR)

SAR is related to the rate at which energy is absorbed per unit mass in an object exposed to a radio field. The SAR distribution in a biological body is complicated and is usually carried out by experimental techniques or numerical modeling. The standard recommends limits for two tiers of groups, occupational/controlled and general population/uncontrolled, based on a person's awareness and ability to exercise control over his or her exposure. In general, occupational/controlled exposure limits are higher than the limits for general population/uncontrolled.

The SAR definition is the time derivative (rate) of the incremental energy (dW) absorbed by (dissipated in) an incremental mass (dm) contained in a volume element (dv) of a given density (ρ). The equation description is as below:

$$\text{SAR} = \frac{d}{dt} \left(\frac{dW}{dm} \right) = \frac{d}{dt} \left(\frac{dW}{\rho dv} \right)$$

SAR is expressed in units of Watts per kilogram (W/kg)

SAR measurement can be related to the electrical field in the tissue by

$$\text{SAR} = \frac{\sigma |E|^2}{\rho}$$

Where: σ is the conductivity of the tissue, ρ is the mass density of the tissue and E is the RMS electrical field strength.

3.2 SPEAG DASY52 System

DASY52 system consists of high precision robot, probe alignment sensor, phantom, robot controller, controlled measurement server and near-field probe. The robot includes six axes that can move to the precision position of the DASY52 software defined. The DASY52 software can define the area that is detected by the probe. The robot is connected to controlled box. Controlled measurement server is connected to the controlled robot box. The DAE includes amplifier, signal multiplexing, AD converter, offset measurement and surface detection. It is connected to the Electro-optical coupler (ECO). The ECO performs the conversion form the optical into digital electric signal of the DAE and transfers data to the PC.

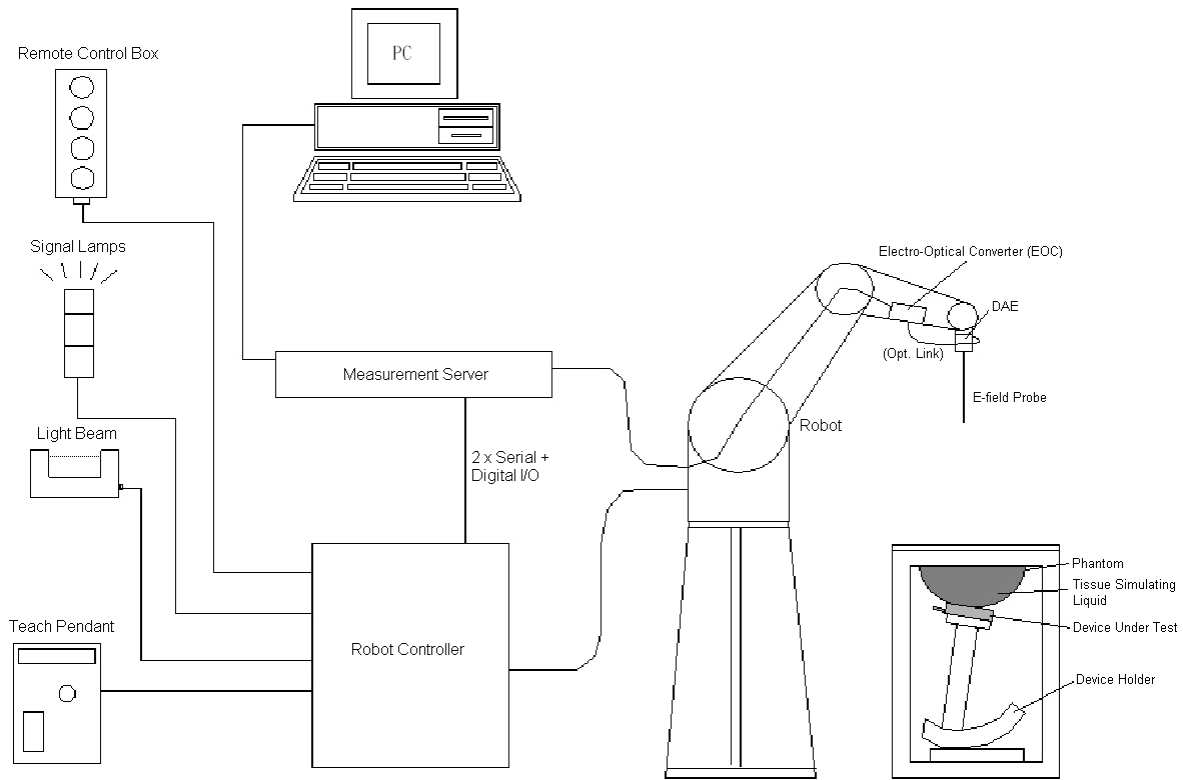


Fig-3.1 SPEAG DASY52 System Setup

3.2.1 Robot

The DASY52 systems use the high precision robots from Stäubli SA (France). For the 6-axis controller system, the robot controller version of CS8c from Stäubli is used. The Stäubli robot series have many features that are important for our application:

- High precision (repeatability ± 0.035 mm)
- High reliability (industrial design)
- Jerk-free straight movements
- Low ELF interference (the closed metallic construction shields against motor control fields)





Fig-3.2 SPEAG DASY52 System


FCC SAR Test Report

3.2.2 Probes


The SAR measurement is conducted with the dosimetric probe. The probe is specially designed and calibrated for use in liquid with high permittivity. The dosimetric probe has special calibration in liquid at different frequency.

Model	EX3DV4	
Construction	Symmetrical design with triangular core. Built-in shielding against static charges. PEEK enclosure material (resistant to organic solvents, e.g., DGBE).	
Frequency	10 MHz to 6 GHz Linearity: ± 0.2 dB	
Directivity	± 0.3 dB in HSL (rotation around probe axis) ± 0.5 dB in tissue material (rotation normal to probe axis)	
Dynamic Range	10 μ W/g to 100 mW/g Linearity: ± 0.2 dB (noise: typically < 1 μ W/g)	
Dimensions	Overall length: 337 mm (Tip: 20 mm) Tip diameter: 2.5 mm (Body: 12 mm) Typical distance from probe tip to dipole centers: 1 mm	


Model	ES3DV3	
Construction	Symmetrical design with triangular core. Interleaved sensors. Built-in shielding against static charges. PEEK enclosure material (resistant to organic solvents, e.g., DGBE).	
Frequency	10 MHz to 4 GHz Linearity: ± 0.2 dB	
Directivity	± 0.2 dB in HSL (rotation around probe axis) ± 0.3 dB in tissue material (rotation normal to probe axis)	
Dynamic Range	5 μ W/g to 100 mW/g Linearity: ± 0.2 dB	
Dimensions	Overall length: 337 mm (Tip: 20 mm) Tip diameter: 3.9 mm (Body: 12 mm) Distance from probe tip to dipole centers: 2.0 mm	

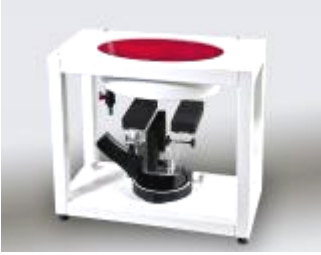
Model	ET3DV6	
Construction	Symmetrical design with triangular core Built-in optical fiber for surface detection system. Built-in shielding against static charges. PEEK enclosure material (resistant to organic solvents, e.g., DGBE)	
Frequency	10 MHz to 2.3 GHz; Linearity: ± 0.2 dB	
Directivity	± 0.2 dB in TSL (rotation around probe axis) ± 0.4 dB in TSL (rotation normal to probe axis)	
Dynamic Range	5 μ W/g to 100 mW/g; Linearity: ± 0.2 dB	
Dimensions	Overall length: 337 mm (Tip: 16 mm) Tip diameter: 6.8 mm (Body: 12 mm) Distance from probe tip to dipole centers: 2.7 mm	

3.2.3 Data Acquisition Electronics (DAE)

Model	DAE3, DAE4	
Construction	Signal amplifier, multiplexer, A/D converter and control logic. Serial optical link for communication with DASY embedded system (fully remote controlled). Two step probe touch detector for mechanical surface detection and emergency robot stop.	
Measurement Range	-100 to +300 mV (16 bit resolution and two range settings: 4mV, 400mV)	
Input Offset Voltage	$< 5\mu$ V (with auto zero)	
Input Bias Current	< 50 fA	
Dimensions	60 x 60 x 68 mm	


3.2.4 Phantoms


Model	Twin SAM	
Construction	The shell corresponds to the specifications of the Specific Anthropomorphic Mannequin (SAM) phantom defined in IEEE 1528 and IEC 62209-1. It enables the dosimetric evaluation of left and right hand phone usage as well as body mounted usage at the flat phantom region. A cover prevents evaporation of the liquid. Reference markings on the phantom allow the complete setup of all predefined phantom positions and measurement grids by teaching three points with the robot.	
Material	Vinylester, glass fiber reinforced (VE-GF)	
Shell Thickness	2 ± 0.2 mm (6 ± 0.2 mm at ear point)	
Dimensions	Length: 1000 mm Width: 500 mm Height: adjustable feet	
Filling Volume	approx. 25 liters	

Model	ELI	
Construction	Phantom for compliance testing of handheld and body-mounted wireless devices in the frequency range of 30 MHz to 6 GHz. ELI is fully compatible with the IEC 62209-2 standard and all known tissue simulating liquids. ELI has been optimized regarding its performance and can be integrated into our standard phantom tables. A cover prevents evaporation of the liquid. Reference markings on the phantom allow installation of the complete setup, including all predefined phantom positions and measurement grids, by teaching three points. The phantom is compatible with all SPEAG dosimetric probes and dipoles.	
Material	Vinylester, glass fiber reinforced (VE-GF)	
Shell Thickness	2.0 ± 0.2 mm (bottom plate)	
Dimensions	Major axis: 600 mm Minor axis: 400 mm	
Filling Volume	approx. 30 liters	


FCC SAR Test Report

3.2.5 Device Holder

Model	Mounting Device	
Construction	In combination with the Twin SAM Phantom or ELI4, the Mounting Device enables the rotation of the mounted transmitter device in spherical coordinates. Rotation point is the ear opening point. Transmitter devices can be easily and accurately positioned according to IEC, IEEE, FCC or other specifications. The device holder can be locked for positioning at different phantom sections (left head, right head, flat).	
Material	POM	

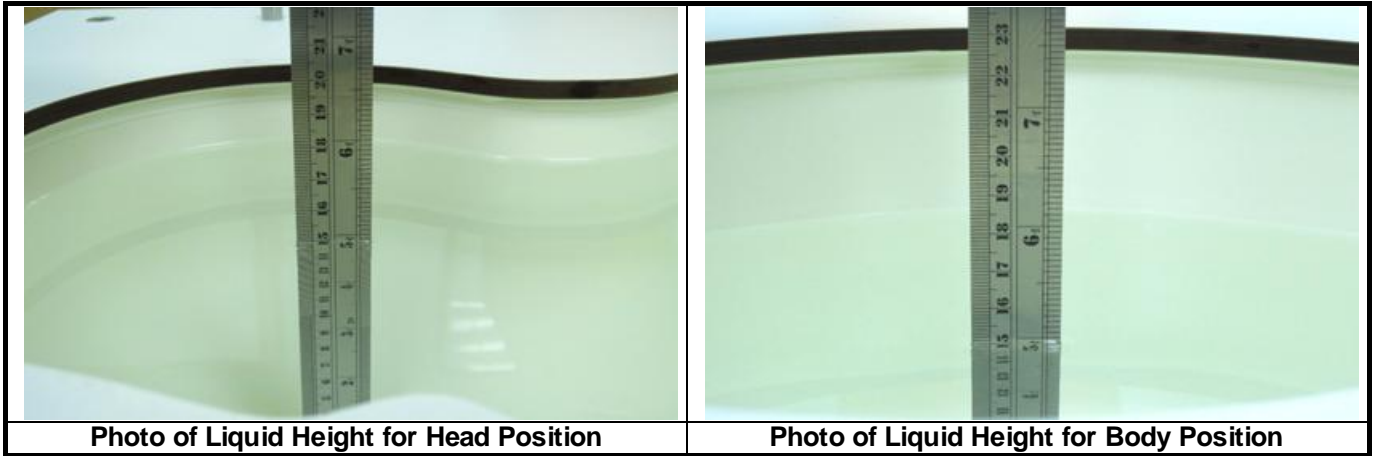
Model	Laptop Extensions Kit	
Construction	Simple but effective and easy-to-use extension for Mounting Device that facilitates the testing of larger devices according to IEC 62209-2 (e.g., laptops, cameras, etc.). It is lightweight and fits easily on the upper part of the Mounting Device in place of the phone positioner.	
Material	POM, Acrylic glass, Foam	

3.2.6 System Validation Dipoles

Model	D-Serial	
Construction	Symmetrical dipole with 1/4 balun. Enables measurement of feed point impedance with NWA. Matched for use near flat phantoms filled with tissue simulating solutions.	
Frequency	750 MHz to 5800 MHz	
Return Loss	> 20 dB	
Power Capability	> 100 W (f < 1GHz), > 40 W (f > 1GHz)	

3.2.7 Tissue Simulating Liquids

For SAR measurement of the field distribution inside the phantom, the phantom must be filled with homogeneous tissue simulating liquid to a depth of at least 15 cm. For head SAR testing, the liquid height from the ear reference point (ERP) of the phantom to the liquid top surface is larger than 15 cm. For body SAR testing, the liquid height from the center of the flat phantom to the liquid top surface is larger than 15 cm. The nominal dielectric values of the tissue simulating liquids in the phantom and the tolerance of 5% are listed in Table-3.1.



The dielectric properties of the head tissue simulating liquids are defined in IEEE 1528, and KDB 865664 D01 Appendix A. For the body tissue simulating liquids, the dielectric properties are defined in KDB 865664 D01 Appendix A. The dielectric properties of the tissue simulating liquids were verified prior to the SAR evaluation using a dielectric assessment kit and a network analyzer.

Table-3.1 Targets of Tissue Simulating Liquid

Frequency (MHz)	Target Permittivity	Range of $\pm 5\%$	Target Conductivity	Range of $\pm 5\%$
For Head				
750	41.9	39.8 ~ 44.0	0.89	0.85 ~ 0.93
835	41.5	39.4 ~ 43.6	0.90	0.86 ~ 0.95
900	41.5	39.4 ~ 43.6	0.97	0.92 ~ 1.02
1450	40.5	38.5 ~ 42.5	1.20	1.14 ~ 1.26
1640	40.3	38.3 ~ 42.3	1.29	1.23 ~ 1.35
1750	40.1	38.1 ~ 42.1	1.37	1.30 ~ 1.44
1800	40.0	38.0 ~ 42.0	1.40	1.33 ~ 1.47
1900	40.0	38.0 ~ 42.0	1.40	1.33 ~ 1.47
2000	40.0	38.0 ~ 42.0	1.40	1.33 ~ 1.47
2300	39.5	37.5 ~ 41.5	1.67	1.59 ~ 1.75
2450	39.2	37.2 ~ 41.2	1.80	1.71 ~ 1.89
2600	39.0	37.1 ~ 41.0	1.96	1.86 ~ 2.06
3500	37.9	36.0 ~ 39.8	2.91	2.76 ~ 3.06
5200	36.0	34.2 ~ 37.8	4.66	4.43 ~ 4.89
5300	35.9	34.1 ~ 37.7	4.76	4.52 ~ 5.00
5500	35.6	33.8 ~ 37.4	4.96	4.71 ~ 5.21
5600	35.5	33.7 ~ 37.3	5.07	4.82 ~ 5.32
5800	35.3	33.5 ~ 37.1	5.27	5.01 ~ 5.53

FCC SAR Test Report

The following table gives the recipes for tissue simulating liquids.

Table-3.2 Recipes of Tissue Simulating Liquid

Tissue Type	Bactericide	DGBE	HEC	NaCl	Sucrose	Triton X-100	Water	Diethylene Glycol Mono-hexylether
H750	0.2	-	0.2	1.5	56.0	-	42.1	-
H835	0.2	-	0.2	1.5	57.0	-	41.1	-
H900	0.2	-	0.2	1.4	58.0	-	40.2	-
H1450	-	43.3	-	0.6	-	-	56.1	-
H1640	-	45.8	-	0.5	-	-	53.7	-
H1750	-	47.0	-	0.4	-	-	52.6	-
H1800	-	44.5	-	0.3	-	-	55.2	-
H1900	-	44.5	-	0.2	-	-	55.3	-
H2000	-	44.5	-	0.1	-	-	55.4	-
H2300	-	44.9	-	0.1	-	-	55.0	-
H2450	-	45.0	-	0.1	-	-	54.9	-
H2600	-	45.1	-	0.1	-	-	54.8	-
H3500	-	8.0	-	0.2	-	20.0	71.8	-
H5G	-	-	-	-	-	17.2	65.5	17.3
B750	0.2	-	0.2	0.8	48.8	-	50.0	-
B835	0.2	-	0.2	0.9	48.5	-	50.2	-
B900	0.2	-	0.2	0.9	48.2	-	50.5	-
B1450	-	34.0	-	0.3	-	-	65.7	-
B1640	-	32.5	-	0.3	-	-	67.2	-
B1750	-	31.0	-	0.2	-	-	68.8	-
B1800	-	29.5	-	0.4	-	-	70.1	-
B1900	-	29.5	-	0.3	-	-	70.2	-
B2000	-	30.0	-	0.2	-	-	69.8	-
B2300	-	31.0	-	0.1	-	-	68.9	-
B2450	-	31.4	-	0.1	-	-	68.5	-
B2600	-	31.8	-	0.1	-	-	68.1	-
B3500	-	28.8	-	0.1	-	-	71.1	-
B5G	-	-	-	-	-	10.7	78.6	10.7

3.3 SAR System Verification

The system check verifies that the system operates within its specifications. It is performed daily or before every SAR measurement. The system check uses normal SAR measurements in the flat section of the phantom with a matched dipole at a specified distance. The system verification setup is shown as below.

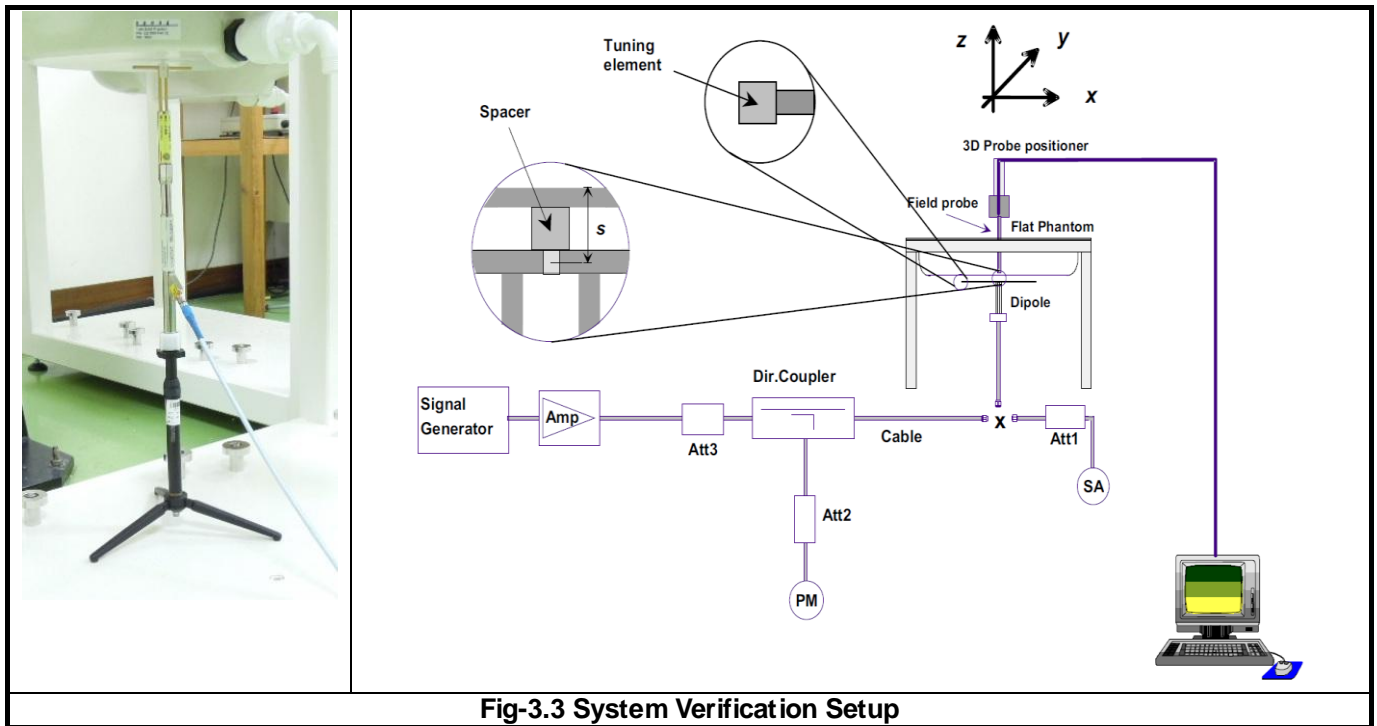


Fig-3.3 System Verification Setup

The validation dipole is placed beneath the flat phantom with the specific spacer in place. The distance spacer is touch the phantom surface with a light pressure at the reference marking and be oriented parallel to the long side of the phantom. The spectrum analyzer measures the forward power at the location of the system check dipole connector. The signal generator is adjusted for the desired forward power (250 mW is used for 700 MHz to 3 GHz, 100 mW is used for 3.5 GHz to 6 GHz) at the dipole connector and the power meter is read at that level. After connecting the cable to the dipole, the signal generator is readjusted for the same reading at power meter.

After system check testing, the SAR result will be normalized to 1W forward input power and compared with the reference SAR value derived from validation dipole certificate report. The deviation of system check should be within 10 %.

3.4 SAR Measurement Procedure

According to the SAR test standard, the recommended procedure for assessing the peak spatial-average SAR value consists of the following steps:

- (a) Power reference measurement
- (b) Area scan
- (c) Zoom scan
- (d) Power drift measurement

The SAR measurement procedures for each of test conditions are as follows:

- (a) Make EUT to transmit maximum output power
- (b) Measure conducted output power through RF cable
- (c) Place the EUT in the specific position of phantom
- (d) Perform SAR testing steps on the DASY system
- (e) Record the SAR value

3.4.1 Area & Zoom Scan Procedure

First Area Scan is used to locate the approximate location(s) of the local peak SAR value(s). The measurement grid within an Area Scan is defined by the grid extent, grid step size and grid offset. Next, in order to determine the EM field distribution in a three-dimensional spatial extension, Zoom Scan is required. The Zoom Scan is performed around the highest E-field value to determine the averaged SAR-distribution over 10 g. According to KDB 865664 D01, the resolution for Area and Zoom scan is specified in the table below.

Items	<= 2 GHz	2-3 GHz	3-4 GHz	4-5 GHz	5-6 GHz
Area Scan ($\Delta x, \Delta y$)	<= 15 mm	<= 12 mm	<= 12 mm	<= 10 mm	<= 10 mm
Zoom Scan ($\Delta x, \Delta y$)	<= 8 mm	<= 5 mm	<= 5 mm	<= 4 mm	<= 4 mm
Zoom Scan (Δz)	<= 5 mm	<= 5 mm	<= 4 mm	<= 3 mm	<= 2 mm
Zoom Scan Volume	>= 30 mm	>= 30 mm	>= 28 mm	>= 25 mm	>= 22 mm

Note:

When zoom scan is required and report SAR is <= 1.4 W/kg, the zoom scan resolution of $\Delta x / \Delta y$ (2-3GHz: <= 8 mm, 3-4GHz: <= 7 mm, 4-6GHz: <= 5 mm) may be applied.

3.4.2 Volume Scan Procedure

The volume scan is used for assess overlapping SAR distributions for antennas transmitting in different frequency bands. It is equivalent to an oversized zoom scan used in standalone measurements. The measurement volume will be used to enclose all the simultaneous transmitting antennas. For antennas transmitting simultaneously in different frequency bands, the volume scan is measured separately in each frequency band. In order to sum correctly to compute the 1g aggregate SAR, the EUT remain in the same test position for all measurements and all volume scan use the same spatial resolution and grid spacing. When all volume scan were completed, the software, SEMCAD postprocessor can combine and subsequently superpose these measurement data to calculating the multiband SAR.

3.4.3 Power Drift Monitoring

All SAR testing is under the EUT install full charged battery and transmit maximum output power. In DASYS measurement software, the power reference measurement and power drift measurement procedures are used for monitoring the power drift of EUT during SAR test. Both these procedures measure the field at a specified reference position before and after the SAR testing. The software will calculate the field difference in dB. If the power drift more than 5%, the SAR will be retested.

3.4.4 Spatial Peak SAR Evaluation

The procedure for spatial peak SAR evaluation has been implemented according to the test standard. It can be conducted for 1g and 10g, as well as for user-specific masses. The DASYS software includes all numerical procedures necessary to evaluate the spatial peak SAR value.

The base for the evaluation is a "cube" measurement. The measured volume must include the 1g and 10g cubes with the highest averaged SAR values. For that purpose, the center of the measured volume is aligned to the interpolated peak SAR value of a previously performed area scan.

The entire evaluation of the spatial peak values is performed within the post-processing engine (SEMCAD). The system always gives the maximum values for the 1g and 10g cubes. The algorithm to find the cube with highest averaged SAR is divided into the following stages:

- (a) Extraction of the measured data (grid and values) from the Zoom Scan
- (b) Calculation of the SAR value at every measurement point based on all stored data (A/D values and measurement parameters)
- (c) Generation of a high-resolution mesh within the measured volume
- (d) Interpolation of all measured values from the measurement grid to the high-resolution grid
- (e) Extrapolation of the entire 3-D field distribution to the phantom surface over the distance from sensor to surface
- (f) Calculation of the averaged SAR within masses of 1g and 10g

3.4.5 SAR Averaged Methods

In DASYS, the interpolation and extrapolation are both based on the modified Quadratic Shepard's method. The interpolation scheme combines a least-square fitted function method and a weighted average method which are the two basic types of computational interpolation and approximation.

Extrapolation routines are used to obtain SAR values between the lowest measurement points and the inner phantom surface. The extrapolation distance is determined by the surface detection distance and the probe sensor offset. The uncertainty increases with the extrapolation distance. To keep the uncertainty within 1% for the 1 g and 10 g cubes, the extrapolation distance should not be larger than 5 mm.

4. SAR Measurement Evaluation

4.1 EUT Configuration and Setting

<Considerations Related to WLAN for Setup and Testing>

In general, various vendor specific external test software and chipset based internal test modes are typically used for SAR measurement. These chipset based test mode utilities are generally hardware and manufacturer dependent, and often include substantial flexibility to reconfigure or reprogram a device. A Wi-Fi device must be configured to transmit continuously at the required data rate, channel bandwidth and signal modulation, using the highest transmission duty factor supported by the test mode tools for SAR measurement. The test frequencies established using test mode must correspond to the actual channel frequencies. When 802.11 frame gaps are accounted for in the transmission, a maximum transmission duty factor of 92 - 96% is typically achievable in most test mode configurations. A minimum transmission duty factor of 85% is required to avoid certain hardware and device implementation issues related to wide range SAR scaling. In addition, a periodic transmission duty factor is required for current generation SAR systems to measure SAR correctly. The reported SAR must be scaled to 100% transmission duty factor to determine compliance at the maximum tune-up tolerance limit.

According to KDB 248227 D01, this device has installed WLAN engineering testing software which can provide continuous transmitting RF signal. During WLAN SAR testing, this device was operated to transmit continuously at the maximum transmission duty with specified transmission mode, operating frequency, lowest data rate, and maximum output power.

Initial Test Configuration

An initial test configuration is determined for OFDM transmission modes in 2.4 GHz and 5 GHz bands according to the channel bandwidth, modulation and data rate combination(s) with the highest maximum output power specified for production units in each standalone and aggregated frequency band. When the same maximum power is specified for multiple transmission modes in a frequency band, the largest channel bandwidth, lowest order modulation, lowest data rate and lowest order 802.11a/g/n/ac mode is used for SAR measurement, on the highest measured output power channel in the initial test configuration, for each frequency band.

Subsequent Test Configuration

SAR measurement requirements for the remaining 802.11 transmission mode configurations that have not been tested in the initial test configuration are determined separately for each standalone and aggregated frequency band, in each exposure condition, according to the maximum output power specified for production units. Additional power measurements may be required to determine if SAR measurements are required for subsequent highest output power channels in a subsequent test configuration. When the highest reported SAR for the initial test configuration according to the initial test position or fixed exposure position requirements, is adjusted by the ratio of the subsequent test configuration to initial test configuration specified maximum output power and the adjusted SAR is ≤ 1.2 W/kg, SAR is not required for that subsequent test configuration.

SAR Test Configuration and Channel Selection

When multiple channel bandwidth configurations in a frequency band have the same specified maximum output power, the initial test configuration is using largest channel bandwidth, lowest order modulation, lowest data rate, and lowest order 802.11 mode (i.e., 802.11a is chosen over 802.11n then 802.11ac or 802.11g is chosen over 802.11n). After an initial test configuration is determined, if multiple test channels have the same measured maximum output power, the channel chosen for SAR measurement is determined according to the following.

- 1) The channel closest to mid-band frequency is selected for SAR measurement.
- 2) For channels with equal separation from mid-band frequency; for example, high and low channels or two mid-band channels, the higher frequency (number) channel is selected for SAR measurement.

Test Reduction for U-NII-1 (5.2 GHz) and U-NII-2A (5.3 GHz) Bands

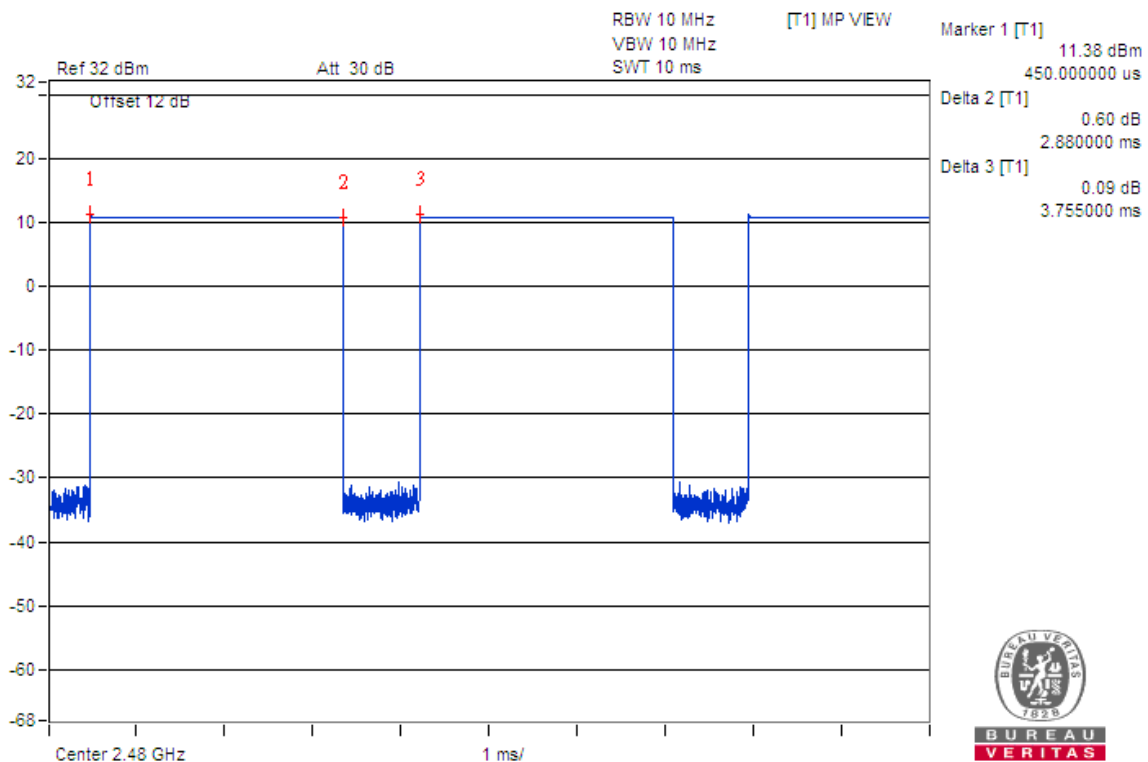
For devices that operate in both U-NII bands using the same transmitter and antenna(s), SAR test reduction is determined according to the following.

- 1) When the same maximum output power is specified for both bands, begin SAR measurement in U-NII-2A band by applying the OFDM SAR requirements. If the highest reported SAR for a test configuration is ≤ 1.2 W/kg, SAR is not required for U-NII-1 band for that configuration (802.11 mode and exposure condition).
- 2) When different maximum output power is specified for the bands, begin SAR measurement in the band with higher specified maximum output power. The highest reported SAR for the tested configuration is adjusted by the ratio of lower to higher specified maximum output power for the two bands. When the adjusted SAR is ≤ 1.2 W/kg, SAR is not required for the band with lower maximum output power in that test configuration.

<Considerations Related to Bluetooth for Setup and Testing>

This device has installed Bluetooth engineering testing software which can provide continuous transmitting RF signal. During Bluetooth SAR testing, this device was operated to transmit continuously at the maximum transmission duty with specified transmission mode, operating frequency, lowest data rate, and maximum output power.

The Bluetooth call box has been used during SAR measurement and the EUT was set to DH5 mode at the maximum output power. Its duty factor was calculated as below and the measured SAR for Bluetooth would be scaled to the 100% transmission duty factor to determine compliance.



Time-domain plot for Bluetooth transmission signal

The duty factor of Bluetooth signal has been calculated as following.

$$\text{Duty Factor} = \text{Pulse Width} / \text{Total Period} = 2.88 / 3.755 = 76.70 \%$$

4.2 EUT Testing Position

4.2.1 Body Exposure Conditions

For full-size tablet, according to KDB 616217 D04, SAR evaluation is required for back surface and edges of the devices. The back surface and edges of the tablet are tested with the tablet touching the phantom. Exposures from antennas through the front surface of the display section of a tablet are generally limited to the user's hands. Exposures to hands for typical consumer transmitters used in tablets are not expected to exceed the extremity SAR limit; therefore, SAR evaluation for the front surface of tablet display screens are generally not necessary. When voice mode is supported on a tablet and it is limited to speaker mode or headset operations only, additional SAR testing for this type of voice use is not required.

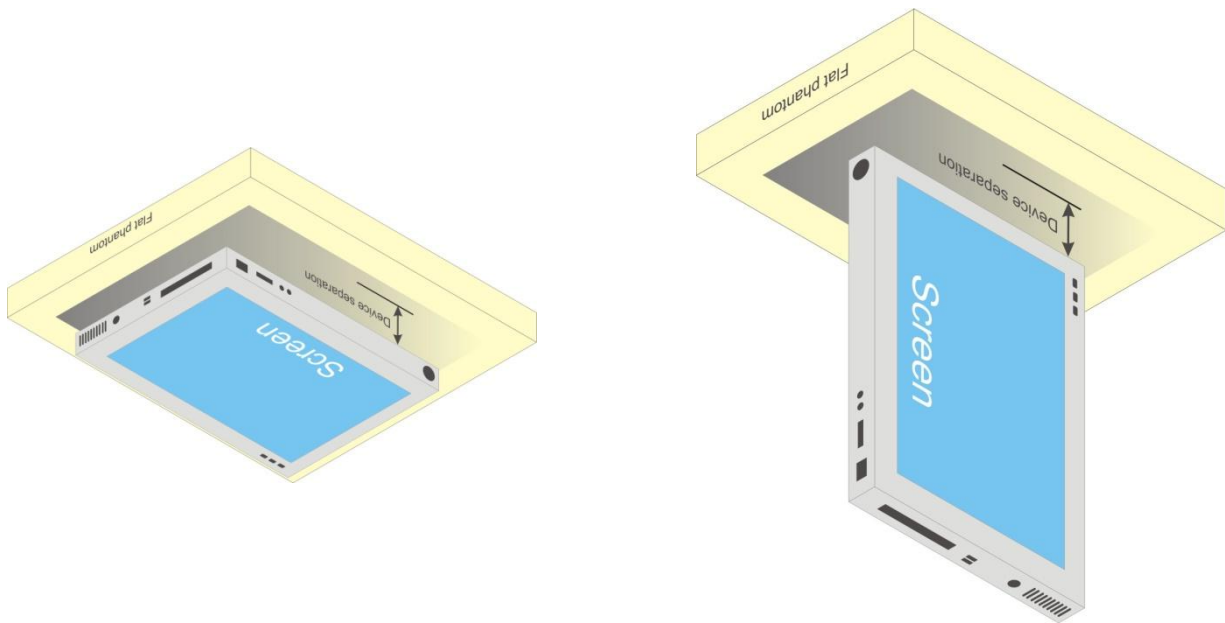


Fig-4.1 Illustration for Tablet Setup

For laptop PC, according to KDB 616217 D04, SAR evaluation is required for the bottom surface of the keyboard. This EUT was tested in the base of EUT directly against the flat phantom. The required minimum test separation distance for incorporating transmitters and antennas into laptop computer display is determined with the display screen opened at an angle of 90° to the keyboard compartment.

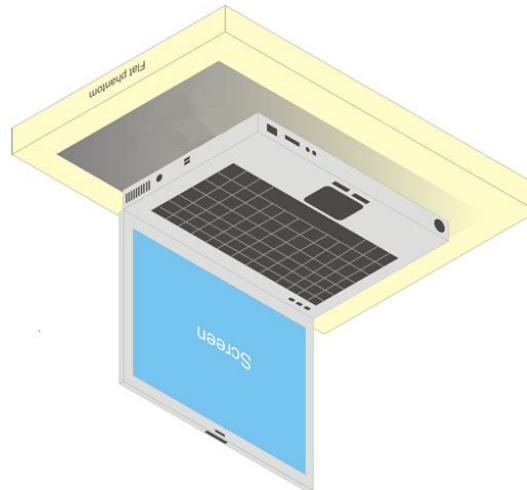


Fig-4.2 Illustration for Laptop Setup

For laptop PC with antennas built-in on display screen, according to RSS-102 Supplementary procedures (SPR-001), IC requires SAR measurements to be performed with the side/edge of the display screen containing the built-in antenna pointing towards the flat phantom, unless the side/edge of the laptop computer containing the built-in antenna was already tested against the flat phantom to account for the user requirements (e.g. antenna in the laptop base). The separation distance shall not exceed 25 mm between the device and the flat phantom to show compliance for bystanders. Additional configurations regarding SAR testing for laptop computer are not required if the separation distance of 25 mm for bystanders represents the worst-case configuration.

The bystander SAR measurement procedure is as following.

1. If the integrated antenna is located in the back side of the display screen, the back side shall be facing towards the flat phantom at a distance not exceeding 25 mm.
2. If the integrated antenna is installed along the edge of the display screen, the edge shall be facing towards the flat phantom at a distance not exceeding 25 mm.
3. If the integrated antenna is installed at the corner of the display, both edges, as well as back side shall be tested to ensure that the worst-case configuration is captured.

4.2.2 SAR Test Exclusion Evaluations

According to KDB 447498 D01, the SAR test exclusion condition is based on source-based time-averaged maximum conducted output power, adjusted for tune-up tolerance, and the minimum test separation distance required for the exposure conditions. The SAR exclusion threshold is determined by the following formula.

1. For the test separation distance <= 50 mm

$$\frac{\text{Max. Tune up Power}_{(mW)}}{\text{Min. Test Separation Distance}_{(mm)}} \times \sqrt{f_{(GHz)}} \leq 3.0 \text{ for SAR-1g, } \leq 7.5 \text{ for SAR-10g}$$

When the minimum test separation distance is < 5 mm, a distance of 5 mm is applied to determine SAR test exclusion.

2. For the test separation distance > 50 mm, and the frequency at 100 MHz to 1500 MHz

$$\left[(\text{Threshold at 50 mm in Step 1}) + (\text{Test Separation Distance} - 50 \text{ mm}) \times \left(\frac{f_{(MHz)}}{150} \right) \right]_{(mW)}$$

3. For the test separation distance > 50 mm, and the frequency at > 1500 MHz to 6 GHz

$$[(\text{Threshold at 50 mm in Step 1}) + (\text{Test Separation Distance} - 50 \text{ mm}) \times 10]_{(mW)}$$

<For WLAN Tx1>

Mode	Max. Tune-up Power (dBm)	Max. Tune-up Power (mW)	RearFace			LeftSide			RightSide			Top Side		BottomSide			
			Ant. to Surface (mm)	Calculated Result	Require SAR Testing?	Ant. to Surface (mm)	Calculated Result	Require SAR Testing?	Ant. to Surface (mm)	Calculated Result	Require SAR Testing?	Ant. to Surface (mm)	Calculated Result	Require SAR Testing?	Ant. to Surface (mm)	Calculated Result	Require SAR Testing?
WLAN 2.4G	18.5	71	5	22.28	Yes	211.6	1712 mW	No	55	146 mW	No	4	22.28	Yes	204.5	1641 mW	No
WLAN 5.2G	17	50	5	22.89	Yes	211.6	1682 mW	No	55	116 mW	No	4	22.89	Yes	204.5	1611 mW	No
WLAN 5.3G	15.5	35	5	16.15	Yes	211.6	1681 mW	No	55	115 mW	No	4	16.15	Yes	204.5	1610 mW	No
WLAN 5.6G	15.5	35	5	16.74	Yes	211.6	1679 mW	No	55	113 mW	No	4	16.74	Yes	204.5	1608 mW	No
WLAN 5.8G	15.5	35	5	16.89	Yes	211.6	1678 mW	No	55	112 mW	No	4	16.89	Yes	204.5	1607 mW	No

<For BT/WLANTx2>

Mode	Max. Tune-up Power (dBm)	Max. Tune-up Power (mW)	RearFace			LeftSide			RightSide			Top Side		BottomSide			
			Ant. to Surface (mm)	Calculated Result	Require SAR Testing?	Ant. to Surface (mm)	Calculated Result	Require SAR Testing?	Ant. to Surface (mm)	Calculated Result	Require SAR Testing?	Ant. to Surface (mm)	Calculated Result	Require SAR Testing?	Ant. to Surface (mm)	Calculated Result	Require SAR Testing?
WLAN 2.4G	18.5	71	5	22.28	Yes	65	246 mW	No	205.6	1652 mW	No	4	22.28	Yes	204.5	1641 mW	No
WLAN 5.2G	17	50	5	22.89	Yes	65	216 mW	No	205.6	1622 mW	No	4	22.89	Yes	204.5	1611 mW	No
WLAN 5.3G	15.5	35	5	16.15	Yes	65	215 mW	No	205.6	1621 mW	No	4	16.15	Yes	204.5	1610 mW	No
WLAN 5.6G	15.5	35	5	16.74	Yes	65	213 mW	No	205.6	1619 mW	No	4	16.74	Yes	204.5	1608 mW	No
WLAN 5.8G	15.5	35	5	16.89	Yes	65	212 mW	No	205.6	1618 mW	No	4	16.89	Yes	204.5	1607 mW	No
BT	11	13	5	4.09	Yes	65	245 mW	No	205.6	1651 mW	No	4	4.09	Yes	204.5	1640 mW	No

FCC SAR Test Report

<For WLANTx1 + Tx2>

Mode	Max. Tune-up Power (dBm)	Max. Tune-up Power (mW)	RearFace			LeftSide			RightSide			Top Side			BottomSide		
			Ant. to Surface (mm)	Calculated Result	Require SAR Testing?	Ant. to Surface (mm)	Calculated Result	Require SAR Testing?	Ant. to Surface (mm)	Calculated Result	Require SAR Testing?	Ant. to Surface (mm)	Calculated Result	Require SAR Testing?	Ant. to Surface (mm)	Calculated Result	Require SAR Testing?
WLAN 2.4G	17.5	56	5	17.57	Yes	65	246 mW	No	55	146 mW	No	4	17.57	Yes	204.5	1641 mW	No
WLAN 5.2G	17	50	5	22.89	Yes	65	216 mW	No	55	116 mW	No	4	22.89	Yes	204.5	1611 mW	No
WLAN 5.3G	15.5	35	5	16.15	Yes	65	215 mW	No	55	115 mW	No	4	16.15	Yes	204.5	1610 mW	No
WLAN 5.6G	15.5	35	5	16.74	Yes	65	213 mW	No	55	113 mW	No	4	16.74	Yes	204.5	1608 mW	No
WLAN 5.8G	15.5	35	5	16.89	Yes	65	212 mW	No	55	112 mW	No	4	16.89	Yes	204.5	1607 mW	No

Note:

1. When separation distance ≤ 50 mm and the calculated result shown in above table is ≤ 3.0 for SAR-1g exposure condition, or ≤ 7.5 for SAR-10g exposure condition, the SAR testing exclusion is applied.
2. When separation distance > 50 mm and the device output power is less than the calculated result (power threshold, mW) shown in above table, the SAR testing exclusion is applied.

4.3 Tissue Verification

The measuring results for tissue simulating liquid are shown as below.

Test Date	Frequency (MHz)	Liquid Temp. (°C)	Measured Conductivity (σ)	Measured Permittivity (ε _r)	Target Conductivity (σ)	Target Permittivity (ε _r)	Conductivity Deviation (%)	Permittivity Deviation (%)
Jun. 18, 2019	2450	23.2	1.87	39.052	1.8	39.2	3.89	-0.38
Jun. 18, 2019	5250	23.2	4.564	36.045	4.71	35.9	-3.10	0.40
Jun. 19, 2019	5600	23.4	5.029	37.237	5.07	35.5	-0.81	4.89
Jun. 19, 2019	5750	23.4	5.164	37.001	5.22	35.4	-1.07	4.52

Note:

The dielectric properties of the tissue simulating liquid must be measured within 24 hours before the SAR testing and within ±5% of the target values. Liquid temperature during the SAR testing must be within ±2 °C .

4.4 System Validation

The SAR measurement system was validated according to procedures in KDB 865664 D01. The validation status in tabulated summary is as below.

Test Date	Probe S/N	Calibration Point	Measured Conductivity (σ)	Measured Permittivity (ε _r)	Validation for CW			Validation for Modulation		
					Sensitivity Range	Probe Linearity	Probe Isotropy	Modulation Type	Duty Factor	PAR
Jun. 18, 2019	7375	2450	1.87	39.052	Pass	Pass	Pass	OFDM	N/A	Pass
Jun. 18, 2019	7375	5250	4.564	36.045	Pass	Pass	Pass	OFDM	N/A	Pass
Jun. 19, 2019	7375	5600	5.029	37.237	Pass	Pass	Pass	OFDM	N/A	Pass
Jun. 19, 2019	7375	5750	5.164	37.001	Pass	Pass	Pass	OFDM	N/A	Pass

4.5 System Verification

The measuring result for system verification is tabulated as below.

Test Date	Mode	Frequency (MHz)	1W Target SAR-1g (W/kg)	Measured SAR-1g (W/kg)	Normalized to 1W SAR-1g (W/kg)	Deviation (%)	Dipole S/N	Probe S/N	DAE S/N
Jun. 18, 2019	Head	2450	51.50	13.5	54.00	4.85	737	7375	916
Jun. 18, 2019	Head	5250	80.70	8.04	80.40	-0.37	1019	7375	916
Jun. 19, 2019	Head	5600	85.80	8.30	83.00	-3.26	1019	7375	916
Jun. 19, 2019	Head	5750	81.50	8.34	83.40	2.33	1019	7375	916

Note:

Comparing to the reference SAR value provided by SPEAG, the validation data should be within its specification of 10 %. The result indicates the system check can meet the variation criterion and the plots can be referred to Appendix A of this report.

4.6 Maximum Output Power

4.6.1 Maximum Target Conducted Power

The maximum conducted average power (Unit: dBm) including tune-up tolerance is shown as below.

Tablet Mode

<WLAN 2.4G>

Mode	Channel	Frequency (MHz)	Tune up Power (Tx1)	Tune up Power (Tx2)	Tune up Power (Tx1 + Tx2)
802.11b	1	2412	18.50	18.50	-
	6	2437	18.50	18.50	-
	11	2462	18.25	18.25	-
	12	2467	17.50	16.50	-
	13	2472	15.25	15.25	-
802.11g	1	2412	18.00	17.00	-
	6	2437	18.50	18.50	-
	11	2462	15.50	15.50	-
	12	2467	13.50	13.50	-
	13	2472	10.75	10.75	-
802.11n (HT20)	1	2412	18.00	17.00	16.25
	6	2437	18.50	18.50	17.50
	11	2462	15.50	15.50	14.50
	12	2467	13.50	13.50	13.00
	13	2472	10.75	10.75	7.75
802.11n (HT40)	3	2422	17.00	17.00	16.25
	6	2437	17.50	17.50	16.50
	9	2452	14.00	13.75	13.25
	10	2457	11.50	11.50	10.50
	11	2462	11.50	11.50	8.50
802.11ac (VHT20)	1	2412	18.00	17.00	16.25
	6	2437	18.50	18.50	17.50
	11	2462	15.50	15.50	14.50
	12	2467	13.50	13.50	13.00
	13	2472	10.75	10.75	7.75
802.11ac (VHT40)	3	2422	17.00	17.00	16.25
	6	2437	17.50	17.50	16.50
	9	2452	14.00	13.75	13.25
	10	2457	11.50	11.50	10.50
	11	2462	11.50	11.50	8.50
802.11ax (HE20)	1	2412	18.00	17.00	16.25
	6	2437	18.50	18.50	17.50
	11	2462	15.50	15.50	14.50
	12	2467	13.50	13.50	13.00
	13	2472	10.75	10.75	7.75
802.11ax (HE40)	3	2422	17.00	17.00	16.25
	6	2437	17.50	17.50	16.50
	9	2452	14.00	13.75	13.25
	10	2457	11.50	11.50	10.50
	11	2462	11.50	11.50	8.50

FCC SAR Test Report

<WLAN 5.2G>

Mode	Channel	Frequency (MHz)	Tune up Power (Tx1)	Tune up Power (Tx2)	Tune up Power (Tx1 + Tx2)
802.11a	36	5180	17.00	17.00	-
	40	5200	17.00	17.00	-
	44	5220	17.00	17.00	-
	48	5240	17.00	17.00	-
802.11n (HT20)	36	5180	17.00	17.00	17.00
	40	5200	17.00	17.00	17.00
	44	5220	17.00	17.00	17.00
	48	5240	17.00	17.00	17.00
802.11n (HT40)	38	5190	17.00	17.00	16.50
	46	5230	17.00	17.00	17.00
802.11ac (VHT20)	36	5180	17.00	17.00	17.00
	40	5200	17.00	17.00	17.00
	44	5220	17.00	17.00	17.00
	48	5240	17.00	17.00	17.00
802.11ac (VHT40)	38	5190	17.00	17.00	16.50
	46	5230	17.00	17.00	17.00
802.11ac (VHT80)	42	5210	17.00	17.00	16.50
802.11ax (HE20)	36	5180	17.00	17.00	17.00
	40	5200	17.00	17.00	17.00
	44	5220	17.00	17.00	17.00
	48	5240	17.00	17.00	17.00
802.11ax (HE40)	38	5190	17.00	17.00	16.50
	46	5230	17.00	17.00	17.00
802.11ax (HE80)	42	5210	17.00	17.00	16.50

<WLAN 5.3G>

Mode	Channel	Frequency (MHz)	Tune up Power (Tx1)	Tune up Power (Tx2)	Tune up Power (Tx1 + Tx2)
802.11a	52	5260	15.50	15.50	-
	56	5280	15.50	15.50	-
	60	5300	15.50	15.50	-
	64	5320	15.50	15.50	-
802.11n (HT20)	52	5260	15.50	15.50	15.50
	56	5280	15.50	15.50	15.50
	60	5300	15.50	15.50	15.50
	64	5320	15.50	15.50	15.50
802.11n (HT40)	54	5270	15.50	15.50	15.50
	62	5310	15.50	15.50	15.50
802.11ac (VHT20)	52	5260	15.50	15.50	15.50
	56	5280	15.50	15.50	15.50
	60	5300	15.50	15.50	15.50
	64	5320	15.50	15.50	15.50
802.11ac (VHT40)	54	5270	15.50	15.50	15.50
	62	5310	15.50	15.50	15.50
802.11ac (VHT80)	58	5290	15.50	15.50	15.50
802.11ac (VHT160)	50	5250	14.50	14.75	14.50
802.11ax (HE20)	52	5260	15.50	15.50	15.50
	56	5280	15.50	15.50	15.50
	60	5300	15.50	15.50	15.50
	64	5320	15.50	15.50	15.50
802.11ax (HE40)	54	5270	15.50	15.50	15.50
	62	5310	15.50	15.50	15.50
802.11ax (HE80)	58	5290	15.50	15.50	15.50
802.11ax (HE160)	50	5250	14.50	14.75	14.50

FCC SAR Test Report

<WLAN 5.6G>

Mode	Channel	Frequency (MHz)	Tune up Power (Tx1)	Tune up Power (Tx2)	Tune up Power (Tx1 + Tx2)
802.11a	100	5500	15.50	15.50	-
	116	5580	15.50	15.50	-
	120	5600	15.50	15.50	
	124	5620	15.50	15.50	
	132	5660	15.50	15.50	-
	140	5700	15.50	15.50	-
802.11n (HT20)	144	5720	15.50	15.50	-
	100	5500	15.50	15.50	15.50
	116	5580	15.50	15.50	15.50
	120	5600	15.50	15.50	15.50
	124	5620	15.50	15.50	15.50
	132	5660	15.50	15.50	15.50
802.11n (HT40)	140	5700	15.50	15.50	15.50
	144	5720	15.50	15.50	15.50
	102	5510	15.50	15.50	15.50
	110	5550	15.50	15.50	15.50
	118	5590	15.50	15.50	15.50
	126	5630	15.50	15.50	15.50
802.11ac (VHT20)	134	5670	15.50	15.50	15.50
	142	5710	15.50	15.50	15.50
	100	5500	15.50	15.50	15.50
	116	5580	15.50	15.50	15.50
	120	5600	15.50	15.50	15.50
	124	5620	15.50	15.50	15.50
802.11ac (VHT40)	132	5660	15.50	15.50	15.50
	140	5700	15.50	15.50	15.50
	144	5720	15.50	15.50	15.50
	102	5510	15.50	15.50	15.50
	110	5550	15.50	15.50	15.50
	118	5590	15.50	15.50	15.50
802.11ac (VHT80)	126	5630	15.50	15.50	15.50
	134	5670	15.50	15.50	15.50
	142	5710	15.50	15.50	15.50
802.11ac (VHT160)	106	5530	15.50	15.50	15.50
	122	5610	15.50	15.50	15.50
802.11ax (HE20)	138	5690	15.50	15.50	15.50
	114	5570	14.50	15.50	14.50
	100	5500	15.50	15.50	15.50
	116	5580	15.50	15.50	15.50
	120	5600	15.50	15.50	15.50
	124	5620	15.50	15.50	15.50
802.11ax (HE40)	132	5660	15.50	15.50	15.50
	140	5700	15.50	15.50	15.50
	144	5720	15.50	15.50	15.50
	102	5510	15.50	15.50	15.50
	110	5550	15.50	15.50	15.50
	118	5590	15.50	15.50	15.50
802.11ax (HE80)	126	5630	15.50	15.50	15.50
	134	5670	15.50	15.50	15.50
	142	5710	15.50	15.50	15.50
802.11ax (HE160)	106	5530	15.50	15.50	15.50
	122	5610	15.50	15.50	15.50
802.11ax (HE160)	138	5690	15.50	15.50	15.50
	114	5570	14.50	15.50	14.50

FCC SAR Test Report

<WLAN 5.8G>

Mode	Channel	Frequency (MHz)	Tune up Power (Tx1)	Tune up Power (Tx2)	Tune up Power (Tx1 + Tx2)
802.11a	149	5745	15.50	15.50	-
	153	5765	15.50	15.50	-
	157	5785	15.50	15.50	-
	161	5805	15.50	15.50	-
	165	5825	15.50	15.50	-
802.11n (HT20)	149	5745	15.50	15.50	15.50
	153	5765	15.50	15.50	15.50
	157	5785	15.50	15.50	15.50
	161	5805	15.50	15.50	15.50
	165	5825	15.50	15.50	15.50
802.11n (HT40)	151	5755	15.50	15.50	15.50
	159	5795	15.50	15.50	15.50
802.11ac (VHT20)	149	5745	15.50	15.50	15.50
	153	5765	15.50	15.50	15.50
	157	5785	15.50	15.50	15.50
	161	5805	15.50	15.50	15.50
	165	5825	15.50	15.50	15.50
802.11ac (VHT40)	151	5755	15.50	15.50	15.50
	159	5795	15.50	15.50	15.50
802.11ac (VHT80)	155	5775	15.50	15.50	15.50
802.11ax (HE20)	149	5745	15.50	15.50	15.50
	153	5765	15.50	15.50	15.50
	157	5785	15.50	15.50	15.50
	161	5805	15.50	15.50	15.50
	165	5825	15.50	15.50	15.50
802.11ax (HE40)	151	5755	15.50	15.50	15.50
	159	5795	15.50	15.50	15.50
802.11ax (HE80)	155	5775	15.50	15.50	15.50

<Bluetooth>

Mode	Channel	Frequency (MHz)	Tune up Power
Bluetooth EDR	0	2402	11.00
	39	2441	11.00
	78	2480	11.00
Bluetooth LE	0	2402	7.00
	19	2440	7.00
	39	2480	7.00

FCC SAR Test Report

Laptop Mode

<WLAN 2.4G>

Mode	Channel	Frequency (MHz)	Tune up Power (Tx1)	Tune up Power (Tx2)	Tune up Power (Tx1 + Tx2)
802.11b	1	2412	19.50	19.50	-
	6	2437	20.50	20.50	-
	11	2462	18.25	18.25	-
	12	2467	17.50	16.50	-
	13	2472	15.25	15.25	-
802.11g	1	2412	18.00	17.00	-
	6	2437	20.00	20.00	-
	11	2462	15.50	15.50	-
	12	2467	13.50	13.50	-
	13	2472	10.75	10.75	-
802.11n (HT20)	1	2412	18.00	17.00	16.25
	6	2437	20.00	20.00	17.50
	11	2462	15.50	15.50	14.50
	12	2467	13.50	13.50	13.00
	13	2472	10.75	10.75	7.75
802.11n (HT40)	3	2422	17.00	17.00	16.25
	6	2437	17.50	17.50	16.50
	9	2452	14.00	13.75	13.25
	10	2457	11.50	11.50	10.50
	11	2462	11.50	11.50	8.50
802.11ac (VHT20)	1	2412	18.00	17.00	16.25
	6	2437	20.00	20.00	17.50
	11	2462	15.50	15.50	14.50
	12	2467	13.50	13.50	13.00
	13	2472	10.75	10.75	7.75
802.11ac (VHT40)	3	2422	17.00	17.00	16.25
	6	2437	17.50	17.50	16.50
	9	2452	14.00	13.75	13.25
	10	2457	11.50	11.50	10.50
	11	2462	11.50	11.50	8.50
802.11ax (HE20)	1	2412	18.00	17.00	16.25
	6	2437	20.00	20.00	17.50
	11	2462	15.50	15.50	14.50
	12	2467	13.50	13.50	13.00
	13	2472	10.75	10.75	7.75
802.11ax (HE40)	3	2422	17.00	17.00	16.25
	6	2437	17.50	17.50	16.50
	9	2452	14.00	13.75	13.25
	10	2457	11.50	11.50	10.50
	11	2462	11.50	11.50	8.50

<WLAN 5.2G>

Mode	Channel	Frequency (MHz)	Tune up Power (Tx1)	Tune up Power (Tx2)	Tune up Power (Tx1 + Tx2)
802.11a	36	5180	19.00	19.00	-
	40	5200	20.50	20.50	-
	44	5220	20.50	20.50	-
	48	5240	20.50	20.50	-
802.11n (HT20)	36	5180	19.00	19.00	18.00
	40	5200	20.50	20.50	19.50
	44	5220	20.50	20.50	19.50
	48	5240	20.50	20.50	19.50
802.11n (HT40)	38	5190	18.50	18.50	16.50
	46	5230	20.50	20.50	19.25
802.11ac (VHT20)	36	5180	19.00	19.00	18.00
	40	5200	20.50	20.50	19.50
	44	5220	20.50	20.50	19.50
	48	5240	20.50	20.50	19.50
802.11ac (VHT40)	38	5190	18.50	18.50	16.50
	46	5230	20.50	20.50	19.25
802.11ac (VHT80)	42	5210	18.50	18.50	16.50
802.11ax (HE20)	36	5180	19.00	19.00	18.00
	40	5200	20.50	20.50	19.50
	44	5220	20.50	20.50	19.50
	48	5240	20.50	20.50	19.50
802.11ax (HE40)	38	5190	18.50	18.50	16.50
	46	5230	20.50	20.50	19.25
802.11ax (HE80)	42	5210	18.50	18.50	16.50

FCC SAR Test Report

<WLAN 5.3G>

Mode	Channel	Frequency (MHz)	Tune up Power (Tx1)	Tune up Power (Tx2)	Tune up Power (Tx1 + Tx2)
802.11a	52	5260	20.50	20.50	-
	56	5280	20.50	20.50	-
	60	5300	20.50	20.50	-
	64	5320	18.75	18.75	-
802.11n (HT20)	52	5260	20.50	20.50	19.50
	56	5280	20.50	20.50	19.50
	60	5300	20.50	20.50	19.50
	64	5320	18.75	18.75	17.50
802.11n (HT40)	54	5270	20.50	20.50	19.25
	62	5310	17.50	17.50	16.00
802.11ac (VHT20)	52	5260	20.50	20.50	19.50
	56	5280	20.50	20.50	19.50
	60	5300	20.50	20.50	19.50
	64	5320	18.75	18.75	17.50
802.11ac (VHT40)	54	5270	20.50	20.50	19.25
	62	5310	17.50	17.50	16.00
802.11ac (VHT80)	58	5290	17.50	17.50	15.75
802.11ac (VHT160)	50	5250	14.50	14.75	17.50
802.11ax (HE20)	52	5260	20.50	20.50	19.50
	56	5280	20.50	20.50	19.50
	60	5300	20.50	20.50	19.50
	64	5320	18.75	18.75	17.50
802.11ax (HE40)	54	5270	20.50	20.50	19.25
	62	5310	17.50	17.50	16.00
802.11ax (HE80)	58	5290	17.50	17.50	15.75
802.11ax (HE160)	50	5250	14.50	14.75	17.50

FCC SAR Test Report

<WLAN 5.6G>

Mode	Channel	Frequency (MHz)	Tune up Power (Tx1)	Tune up Power (Tx2)	Tune up Power (Tx1 + Tx2)
802.11a	100	5500	19.50	19.50	-
	116	5580	20.50	20.50	-
	120	5600	20.50	20.50	
	124	5620	20.50	20.50	
	132	5660	20.50	20.50	-
	140	5700	19.25	19.00	-
802.11n (HT20)	144	5720	20.50	20.50	-
	100	5500	19.50	19.50	18.50
	116	5580	20.50	20.50	19.50
	120	5600	20.50	20.50	19.50
	124	5620	20.50	20.50	19.50
	132	5660	20.50	20.50	19.50
802.11n (HT40)	140	5700	19.25	19.00	17.25
	144	5720	20.50	20.50	19.50
	102	5510	19.00	19.00	18.00
	110	5550	20.50	20.50	19.50
	118	5590	20.50	20.50	19.50
	126	5630	20.50	20.50	19.50
802.11ac (VHT20)	134	5670	18.50	19.50	18.50
	142	5710	20.50	20.50	19.50
	100	5500	19.50	19.50	18.50
	116	5580	20.50	20.50	19.50
	120	5600	20.50	20.50	19.50
	124	5620	20.50	20.50	19.50
802.11ac (VHT40)	132	5660	20.50	20.50	19.50
	140	5700	19.25	19.00	17.25
	144	5720	20.50	20.50	19.50
	102	5510	19.00	19.00	18.00
	110	5550	20.50	20.50	19.50
	118	5590	20.50	20.50	19.50
802.11ac (VHT80)	126	5630	20.50	20.50	19.50
	134	5670	18.50	19.50	18.50
	142	5710	20.50	20.50	19.50
802.11ac (VHT160)	106	5530	18.50	18.50	17.50
	122	5610	19.50	19.50	18.50
	138	5690	20.50	20.50	19.50
802.11ax (HE20)	114	5570	14.50	15.50	17.50
	100	5500	19.50	19.50	18.50
	116	5580	20.50	20.50	19.50
	120	5600	20.50	20.50	19.50
	124	5620	20.50	20.50	19.50
	132	5660	20.50	20.50	19.50
802.11ax (HE40)	140	5700	19.25	19.00	17.25
	144	5720	20.50	20.50	19.50
	102	5510	19.00	19.00	18.00
	110	5550	20.50	20.50	19.50
	118	5590	20.50	20.50	19.50
	126	5630	20.50	20.50	19.50
802.11ax (HE80)	134	5670	18.50	19.50	18.50
	142	5710	20.50	20.50	19.50
	106	5530	18.50	18.50	17.50
802.11ax (HE160)	122	5610	19.50	19.50	18.50
	138	5690	20.50	20.50	19.50
	114	5570	14.50	15.50	17.50

FCC SAR Test Report

<WLAN 5.8G>

Mode	Channel	Frequency (MHz)	Tune up Power (Tx1)	Tune up Power (Tx2)	Tune up Power (Tx1 + Tx2)
802.11a	149	5745	20.50	20.50	-
	153	5765	20.50	20.50	-
	157	5785	20.50	20.50	-
	161	5805	20.50	20.50	-
	165	5825	20.50	20.50	-
802.11n (HT20)	149	5745	20.50	20.50	19.50
	153	5765	20.50	20.50	19.50
	157	5785	20.50	20.50	19.50
	161	5805	20.50	20.50	19.50
	165	5825	20.50	20.50	19.50
802.11n (HT40)	151	5755	20.50	20.50	19.50
	159	5795	20.50	20.50	19.50
802.11ac (VHT20)	149	5745	20.50	20.50	19.50
	153	5765	20.50	20.50	19.50
	157	5785	20.50	20.50	19.50
	161	5805	20.50	20.50	19.50
	165	5825	20.50	20.50	19.50
802.11ac (VHT40)	151	5755	20.50	20.50	19.50
	159	5795	20.50	20.50	19.50
802.11ac (VHT80)	155	5775	19.00	19.25	18.25
802.11ax (HE20)	149	5745	20.50	20.50	19.50
	153	5765	20.50	20.50	19.50
	157	5785	20.50	20.50	19.50
	161	5805	20.50	20.50	19.50
	165	5825	20.50	20.50	19.50
802.11ax (HE40)	151	5755	20.50	20.50	19.50
	159	5795	20.50	20.50	19.50
802.11ax (HE80)	155	5775	19.00	19.25	18.25

<Bluetooth>

Mode	Channel	Frequency (MHz)	Tune up Power
Bluetooth EDR	0	2402	11.00
	39	2441	11.00
	78	2480	11.00
Bluetooth LE	0	2402	7.00
	19	2440	7.00
	39	2480	7.00

FCC SAR Test Report

4.6.2 Measured Conducted Power Result

The measuring conducted average power (Unit: dBm) is shown as below.

Tablet Mode

<WLAN 2.4G>

Mode	Channel	Frequency (MHz)	Average Power (Tx1)	Average Power (Tx2)	Average Power (Tx1 + Tx2)
802.11b	1	2412	18.06	18.25	-
	6	2437	18.15	18.33	-
	11	2462	17.90	18.04	-
	12	2467	17.11	16.20	-
	13	2472	14.89	15.06	-
802.11n (HT20)	1	2412	-	-	15.97
	6	2437	-	-	17.29
	11	2462	-	-	14.39
	12	2467	-	-	12.80
	13	2472	-	-	7.54

<WLAN 5.2G>

Mode	Channel	Frequency (MHz)	Average Power (Tx1)	Average Power (Tx2)	Average Power (Tx1 + Tx2)
802.11n (HT40)	38	5190	-	-	16.38
	46	5230	-	-	16.87
802.11ac (VHT80)	42	5210	16.67	16.72	-

<WLAN 5.6G>

Mode	Channel	Frequency (MHz)	Average Power (Tx1)	Average Power (Tx2)	Average Power (Tx1 + Tx2)
802.11ac (VHT80)	106	5530	15.36	15.41	15.27
	122	5610	15.19	15.29	15.25
	138	5690	15.22	15.27	15.37

<WLAN 5.8G>

Mode	Channel	Frequency (MHz)	Average Power (Tx1)	Average Power (Tx2)	Average Power (Tx1 + Tx2)
802.11ac (VHT80)	155	5775	15.20	15.27	15.30

<Bluetooth>

Mode	Channel	Frequency (MHz)	Average Power
Bluetooth BDR	0	2402	10.71
	39	2441	10.74
	78	2480	10.90
Bluetooth LE	0	2402	6.97
	19	2440	6.90
	39	2480	6.98

FCC SAR Test Report

Laptop Mode

<WLAN 2.4G>

Mode	Channel	Frequency (MHz)	Average Power (Tx1)	Average Power (Tx2)	Average Power (Tx1 + Tx2)
802.11b	1	2412	19.21	19.34	-
	6	2437	20.10	20.29	-
	11	2462	17.84	17.96	-
	12	2467	16.26	16.43	-
	13	2472	15.09	15.15	-
802.11n (HT20)	1	2412	-	-	16.18
	6	2437	-	-	17.35
	11	2462	-	-	14.37
	12	2467	-	-	12.85
	13	2472	-	-	7.64

<WLAN 5.3G>

Mode	Channel	Frequency (MHz)	Average Power (Tx1)	Average Power (Tx2)	Average Power (Tx1 + Tx2)
802.11n (HT20)	52	5260	-	-	19.44
	56	5280	-	-	19.40
	60	5300	-	-	19.36
	64	5320	-	-	17.39
802.11n (HT40)	54	5270	20.31	20.40	-
	62	5310	17.04	17.21	-

<WLAN 5.6G>

Mode	Channel	Frequency (MHz)	Average Power (Tx1)	Average Power (Tx2)	Average Power (Tx1 + Tx2)
802.11ac (VHT80)	106	5530	18.38	18.43	17.34
	122	5610	19.11	19.21	18.38
	138	5690	20.23	20.38	19.34

<WLAN 5.8G>

Mode	Channel	Frequency (MHz)	Average Power (Tx1)	Average Power (Tx2)	Average Power (Tx1 + Tx2)
802.11n (HT40))	151	5755	20.20	20.32	19.40
	159	5795	20.30	20.37	19.40

<Bluetooth>

Mode	Channel	Frequency (MHz)	Average Power
Bluetooth BDR	0	2402	10.71
	39	2441	10.74
	78	2480	10.90
Bluetooth LE	0	2402	6.97
	19	2440	6.90
	39	2480	6.98

4.7 SAR Testing Results

4.7.1 SAR Test Reduction Considerations

<KDB 447498 D01, General RF Exposure Guidance>

Testing of other required channels within the operating mode of a frequency band is not required when the reported SAR for the mid-band or highest output power channel is:

- (1) ≤ 0.8 W/kg or 2.0 W/kg, for 1-g or 10-g respectively, when the transmission band is ≤ 100 MHz
- (2) ≤ 0.6 W/kg or 1.5 W/kg, for 1-g or 10-g respectively, when the transmission band is between 100 MHz and 200 MHz
- (3) ≤ 0.4 W/kg or 1.0 W/kg, for 1-g or 10-g respectively, when the transmission band is ≥ 200 MHz

When SAR is not measured at the maximum power level allowed for production units, the measured SAR will be scaled to the maximum tune-up tolerance limit to determine compliance. The scaling factor for the tune-up power is defined as maximum tune-up limit (mW) / measured conducted power (mW). The reported SAR would be calculated by measured SAR x tune-up power scaling factor.

The SAR has been measured with highest transmission duty factor supported by the test mode tools for WLAN and/or Bluetooth. When the transmission duty factor could not achieve 100%, the reported SAR will be scaled to 100% transmission duty factor to determine compliance at the maximum tune-up power. The scaling factor for the duty factor is defined as 100% / transmission duty cycle (%). The reported SAR would be calculated by measured SAR x tune-up power scaling factor x duty cycle scaling factor.

<KDB 248227 D01, SAR Guidance for Wi-Fi Transmitters>

- (1) For handsets operating next to ear, hotspot mode or mini-tablet configurations, the initial test position procedures were applied. The test position with the highest extrapolated peak SAR will be used as the initial test position. When the reported SAR of initial test position is ≤ 0.4 W/kg, SAR testing for remaining test positions is not required. Otherwise, SAR is evaluated at the subsequent highest peak SAR positions until the reported SAR result is ≤ 0.8 W/kg or all test positions are measured.
- (2) For WLAN 2.4 GHz, the highest measured maximum output power channel for DSSS was selected for SAR measurement. When the reported SAR is ≤ 0.8 W/kg, no further SAR testing is required. Otherwise, SAR is evaluated at the next highest measured output power channel. When any reported SAR is > 1.2 W/kg, SAR is required for the third channel. For OFDM modes (802.11g/n), SAR is not required when the highest reported SAR for DSSS is adjusted by the ratio of OFDM to DSSS specified maximum output power and it is ≤ 1.2 W/kg.
- (3) For WLAN 5 GHz, the initial test configuration was selected according to the transmission mode with the highest maximum output power. When the reported SAR of initial test configuration is > 0.8 W/kg, SAR is required for the subsequent highest measured output power channel until the reported SAR result is ≤ 1.2 W/kg or all required channels are measured. For other transmission modes, SAR is not required when the highest reported SAR for initial test configuration is adjusted by the ratio of subsequent test configuration to initial test configuration specified maximum output power and it is ≤ 1.2 W/kg.

FCC SAR Test Report

(4) For WLAN MIMO mode, the power-based standalone SAR test exclusion or the sum of SAR provision in KDB 447498 to determine simultaneous transmission SAR test exclusion should be applied. Otherwise, SAR for MIMO mode will be measured with all applicable antennas transmitting simultaneously at the specified maximum output power of MIMO operation.

4.7.2 SAR Results for Body Exposure Condition

Tablet Mode

Plot No.	Band	Mode	Test Position	Separation Distance (mm)	Ch.	Tx Antenna	Duty Cycle	Crest Factor	Max. Tune-up Power (dBm)	Measured Conducted Power (dBm)	Scaling Factor	Power Drift (dB)	Measured SAR-1g (W/kg)	Scaled SAR-1g (W/kg)
01	WLAN2.4G	802.11b	Rear Face	0	6	Tx 1	97.99	1.02	18.5	18.15	1.08	0.12	0.241	0.27
	WLAN2.4G	802.11b	Top Side	0	6	Tx 1	97.99	1.02	18.5	18.15	1.08	-0.17	0.662	0.73
	WLAN2.4G	802.11b	Rear Face	0	6	Tx 2	97.99	1.02	18.5	18.33	1.04	-0.11	0.291	0.31
	WLAN2.4G	802.11b	Top Side	0	6	Tx 2	97.99	1.02	18.5	18.33	1.04	-0.14	0.873	0.93
	WLAN2.4G	802.11n HT20	Rear Face	0	6	Tx 1+2	94.45	1.06	17.5	17.29	1.05	-0.19	0.116	0.13
	WLAN2.4G	802.11n HT20	Top Side	0	6	Tx 1+2	94.45	1.06	17.5	17.29	1.05	-0.14	0.393	0.44
	WLAN2.4G	802.11b	Top Side	0	1	Tx 2	97.99	1.02	18.5	18.25	1.06	-0.07	0.851	0.92
	WLAN2.4G	802.11b	Top Side	0	11	Tx 2	97.99	1.02	18.25	18.04	1.05	0.06	0.802	0.86
	WLAN2.4G	802.11b	Top Side	0	12	Tx 2	97.99	1.02	16.5	16.20	1.07	-0.11	0.631	0.69
	WLAN2.4G	802.11b	Top Side	0	13	Tx 2	97.99	1.02	15.25	15.06	1.04	0.13	0.442	0.47
02	WLAN2.4G	802.11b	Top Side	0	6	Tx 2	97.99	1.02	18.5	18.33	1.04	-0.17	0.861	0.91
	WLAN5.2G	802.11ac VHT80	Rear Face	0	42	Tx 1	97.80	1.02	17.0	16.67	1.08	-0.11	0.341	0.38
	WLAN5.2G	802.11ac VHT80	Top Side	0	42	Tx 1	97.80	1.02	17.0	16.67	1.08	0.02	0.991	1.09
	WLAN5.2G	802.11ac VHT80	Rear Face	0	42	Tx 2	99.30	1.01	17.0	16.72	1.07	-0.07	0.391	0.42
	WLAN5.2G	802.11ac VHT80	Top Side	0	42	Tx 2	99.30	1.01	17.0	16.72	1.07	-0.03	0.683	0.74
	WLAN5.2G	802.11n HT40	Rear Face	0	46	Tx 1+2	97.50	1.03	17.0	16.87	1.03	-0.05	0.187	0.20
	WLAN5.2G	802.11n HT40	Top Side	0	46	Tx 1+2	97.50	1.03	17.0	16.87	1.03	0.12	0.537	0.57
	WLAN5.2G	802.11ac VHT80	Top Side	0	42	Tx 1	97.80	1.02	17.0	16.67	1.08	-0.02	0.981	1.08
	WLAN5.6G	802.11ac VHT80	Rear Face	0	106	Tx 1	97.80	1.02	15.5	15.36	1.03	0.06	0.141	0.15
	WLAN5.6G	802.11ac VHT80	Top Side	0	106	Tx 1	97.80	1.02	15.5	15.36	1.03	0.11	0.678	0.71
03	WLAN5.6G	802.11ac VHT80	Rear Face	0	106	Tx 2	99.30	1.01	15.5	15.41	1.02	0.05	0.155	0.16
	WLAN5.6G	802.11ac VHT80	Top Side	0	106	Tx 2	99.30	1.01	15.5	15.41	1.02	-0.15	0.796	0.82
	WLAN5.6G	802.11ac VHT80	Rear Face	0	138	Tx 1+2	97.70	1.02	15.5	15.37	1.03	0.02	0.081	0.09
	WLAN5.6G	802.11ac VHT80	Top Side	0	138	Tx 1+2	97.70	1.02	15.5	15.37	1.03	0.15	0.318	0.33
	WLAN5.6G	802.11ac VHT80	Top Side	0	122	Tx 2	99.30	1.01	15.5	15.29	1.05	-0.05	0.633	0.67
	WLAN5.6G	802.11ac VHT80	Top Side	0	138	Tx 2	99.30	1.01	15.5	15.27	1.05	0.01	0.537	0.57
04	WLAN5.8G	802.11ac VHT80	Rear Face	0	155	Tx 1	97.80	1.02	15.5	15.20	1.07	0.02	0.152	0.17
	WLAN5.8G	802.11ac VHT80	Top Side	0	155	Tx 1	97.80	1.02	15.5	15.20	1.07	0.18	0.708	0.77
	WLAN5.8G	802.11ac VHT80	Rear Face	0	155	Tx 2	99.30	1.01	15.5	15.27	1.05	-0.03	0.237	0.25
	WLAN5.8G	802.11ac VHT80	Top Side	0	155	Tx 2	99.30	1.01	15.5	15.27	1.05	-0.12	0.916	0.97
	WLAN5.8G	802.11ac VHT80	Rear Face	0	155	Tx 1+2	97.70	1.02	15.5	15.30	1.05	-0.06	0.089	0.10
	WLAN5.8G	802.11ac VHT80	Top Side	0	155	Tx 1+2	97.70	1.02	15.5	15.30	1.05	0.14	0.397	0.43
05	WLAN5.8G	802.11ac VHT80	Top Side	0	155	Tx 2	99.30	1.01	15.5	15.27	1.05	0.03	0.906	0.96
	BT	BDR	Rear Face	0	78	Tx 2	76.70	1.30	11.0	10.90	1.02	-0.05	0.037	0.05
	BT	BDR	Top Side	0	78	Tx 2	76.70	1.30	11.0	10.90	1.02	0.06	0.094	0.12
	BT	BDR	Top Side	0	0	Tx 2	76.70	1.30	11.0	10.71	1.07	0.18	0.091	0.13
	BT	BDR	Top Side	0	39	Tx 2	76.70	1.30	11.0	10.74	1.06	-0.14	0.122	0.17

Note: The “< 0.001” means there is no SAR value or the SAR is too low to be measured.

FCC SAR Test Report

Laptop Mode

Plot No.	Band	Mode	Test Position	Separation Distance (mm)	Ch.	Tx Antenna	Duty Cycle	Crest Factor	Max. Tune-up Power (dBm)	Measured Conducted Power (dBm)	Scaling Factor	Power Drift (dB)	Measured SAR-1g (W/kg)	Scaled SAR-1g (W/kg)
	WLAN2.4G	802.11b	Top of Panel	25	6	Tx 1	97.99	1.02	20.5	20.10	1.10	-0.12	0.019	0.02
	WLAN2.4G	802.11b	Back of Panel	25	6	Tx 1	97.99	1.02	20.5	20.10	1.10	0.02	0.084	0.09
	WLAN2.4G	802.11b	Top of Panel	25	6	Tx 2	97.99	1.02	20.5	20.29	1.05	-0.12	0.018	0.02
06	WLAN2.4G	802.11b	Back of Panel	25	6	Tx 2	97.99	1.02	20.5	20.29	1.05	-0.02	0.108	0.12
	WLAN2.4G	802.11n HT20	Top of Panel	25	6	Tx 1+2	94.45	1.06	17.5	17.35	1.04	-0.01	0.00804	0.01
	WLAN2.4G	802.11n HT20	Back of Panel	25	6	Tx 1+2	94.45	1.06	17.5	17.35	1.04	-0.12	0.049	0.05
	WLAN2.4G	802.11b	Back of Panel	25	1	Tx 2	97.99	1.02	19.5	19.34	1.04	0.08	0.098	0.10
	WLAN2.4G	802.11b	Back of Panel	25	11	Tx 2	97.99	1.02	18.25	17.96	1.07	0.07	0.095	0.10
	WLAN2.4G	802.11b	Back of Panel	25	12	Tx 2	97.99	1.02	16.5	16.43	1.02	0.15	0.073	0.08
	WLAN2.4G	802.11b	Back of Panel	25	13	Tx 2	97.99	1.02	15.25	15.15	1.02	0.09	0.053	0.06
	WLAN5.3G	802.11n HT40	Top of Panel	25	54	Tx 1	97.70	1.02	20.5	20.31	1.04	-0.08	0.043	0.05
	WLAN5.3G	802.11n HT40	Back of Panel	25	54	Tx 1	97.70	1.02	20.5	20.31	1.04	0.03	0.207	0.22
	WLAN5.3G	802.11n HT40	Top of Panel	25	54	Tx 2	97.30	1.03	20.5	20.40	1.02	-0.11	0.044	0.05
07	WLAN5.3G	802.11n HT40	Back of Panel	25	54	Tx 2	97.30	1.03	20.5	20.40	1.02	0.01	0.336	0.35
	WLAN5.3G	802.11n HT20	Top of Panel	25	52	Tx 1+2	100.00	1.00	19.5	19.44	1.01	-0.14	0.021	0.02
	WLAN5.3G	802.11n HT20	Back of Panel	25	52	Tx 1+2	100.00	1.00	19.5	19.44	1.01	0.11	0.191	0.19
	WLAN5.3G	802.11n HT40	Back of Panel	25	62	Tx 2	97.30	1.03	17.5	17.21	1.07	-0.15	0.201	0.22
	WLAN5.6G	802.11ac VHT80	Top of Panel	25	138	Tx 1	97.80	1.02	20.5	20.23	1.06	0.18	0.101	0.11
	WLAN5.6G	802.11ac VHT80	Back of Panel	25	138	Tx 1	97.80	1.02	20.5	20.23	1.06	0.1	0.646	0.70
	WLAN5.6G	802.11ac VHT80	Top of Panel	25	138	Tx 2	99.30	1.01	20.5	20.38	1.03	0.12	0.127	0.13
08	WLAN5.6G	802.11ac VHT80	Back of Panel	25	138	Tx 2	99.30	1.01	20.5	20.38	1.03	0.07	0.795	0.83
	WLAN5.6G	802.11ac VHT80	Top of Panel	25	138	Tx 1+2	97.70	1.02	19.5	19.34	1.04	-0.17	0.042	0.04
	WLAN5.6G	802.11ac VHT80	Back of Panel	25	138	Tx 1+2	97.70	1.02	19.5	19.34	1.04	-0.04	0.285	0.30
	WLAN5.6G	802.11ac VHT80	Back of Panel	25	106	Tx 2	99.30	1.01	18.5	18.43	1.02	-0.09	0.467	0.48
	WLAN5.6G	802.11ac VHT80	Back of Panel	25	122	Tx 2	99.30	1.01	19.5	19.21	1.07	-0.1	0.597	0.65
	WLAN5.8G	802.11n HT40	Top of Panel	25	159	Tx 1	97.70	1.02	20.5	20.30	1.05	0.19	0.175	0.19
	WLAN5.8G	802.11n HT40	Back of Panel	25	159	Tx 1	97.70	1.02	20.5	20.30	1.05	0.11	0.729	0.78
	WLAN5.8G	802.11n HT40	Top of Panel	25	159	Tx 2	97.30	1.03	20.5	20.37	1.03	-0.19	0.208	0.22
09	WLAN5.8G	802.11n HT40	Back of Panel	25	159	Tx 2	97.30	1.03	20.5	20.37	1.03	0.01	0.967	1.03
	WLAN5.8G	802.11n HT40	Top of Panel	25	159	Tx 1+2	97.50	1.03	19.5	19.40	1.02	-0.1	0.059	0.06
	WLAN5.8G	802.11n HT40	Back of Panel	25	159	Tx 1+2	97.50	1.03	19.5	19.40	1.02	0.05	0.372	0.39
	WLAN5.8G	802.11n HT40	Back of Panel	25	151	Tx 2	97.30	1.03	20.5	20.32	1.04	0.04	0.949	1.02
	WLAN5.8G	802.11n HT40	Back of Panel	25	159	Tx 2	97.30	1.03	20.5	20.37	1.03	-0.01	0.954	1.01
	BT	BDR	Top of Panel	25	78	Tx 2	76.70	1.30	11.0	10.90	1.02	0.05	0.00232	0.00
	BT	BDR	Back of Panel	25	78	Tx 2	76.70	1.30	11.0	10.90	1.02	-0.16	0.011	0.01
	BT	BDR	Back of Panel	25	0	Tx 2	76.70	1.30	11.0	10.71	1.07	-0.07	0.013	0.02
10	BT	BDR	Back of Panel	25	39	Tx 2	76.70	1.30	11.0	10.74	1.06	-0.10	0.016	0.02

Note: The "< 0.001" means there is no SAR value or the SAR is too low to be measured.

FCC SAR Test Report

4.7.3 SAR Measurement Variability

According to KDB 865664 D01, SAR measurement variability was assessed for each frequency band, which is determined by the SAR probe calibration point and tissue-equivalent medium used for the device measurements. When both head and body tissue-equivalent media are required for SAR measurements in a frequency band, the variability measurement procedures should be applied to the tissue medium with the highest measured SAR, using the highest measured SAR configuration for that tissue-equivalent medium. Alternatively, if the highest measured SAR for both head and body tissue-equivalent media are ≤ 1.45 W/kg and the ratio of these highest SAR values, i.e., largest divided by smallest value, is ≤ 1.10 , the highest SAR configuration for either head or body tissue-equivalent medium may be used to perform the repeated measurement. These additional measurements are repeated after the completion of all measurements requiring the same head or body tissue-equivalent medium in a frequency band. The test device should be returned to ambient conditions (normal room temperature) with the battery fully charged before it is re-mounted on the device holder for the repeated measurement(s) to minimize any unexpected variations in the repeated results.

SAR repeated measurement procedure:

1. When the highest measured SAR is < 0.80 W/kg, repeated measurement is not required.
2. When the highest measured SAR is ≥ 0.80 W/kg, repeat that measurement once.
3. If the ratio of largest to smallest SAR for the original and first repeated measurements is > 1.20 , or when the original or repeated measurement is ≥ 1.45 W/kg, perform a second repeated measurement.
4. If the ratio of largest to smallest SAR for the original, first and second repeated measurements is > 1.20 , and the original, first or second repeated measurement is ≥ 1.5 W/kg, perform a third repeated measurement.

Band	Mode	Test Position	Ch.	Original Measured SAR-1g (W/kg)	1st Repeated SAR-1g (W/kg)	L/S Ratio	2nd Repeated SAR-1g (W/kg)	L/S Ratio	3rd Repeated SAR-1g (W/kg)	L/S Ratio
WLAN2.4G	802.11b	Top Side	6	0.873	0.861	1.01	N/A	N/A	N/A	N/A
WLAN5.2G	802.11ac VHT80	Top Side	42	0.991	0.981	1.01	N/A	N/A	N/A	N/A
WLAN5.8G	802.11ac VHT80	Top Side	155	0.916	0.906	1.01	N/A	N/A	N/A	N/A
WLAN5.8G	802.11n HT40	Back of Panel	159	0.967	0.954	1.01	N/A	N/A	N/A	N/A

4.7.4 Simultaneous Multi-band Transmission Evaluation

<Possibilities of Simultaneous Transmission>

The simultaneous transmission possibilities for this device are listed as below.

Simultaneous TX Combination	Capable Transmit Configurations	Body Exposure Condition
1	WLAN2.4G Tx1 + BT Tx2	Yes
2	WLAN 5G Tx1 + BT Tx2	Yes
3	WLAN 5G Tx2 + BT Tx2	Yes
4	WLAN 5G Ant MIMO + BT Tx2	Yes

Note:

1. The WLAN 2.4G and WLAN 5G cannot transmit simultaneously.

<Estimated SAR Calculation>

According to KDB 447498 D01, when standalone SAR test exclusion applies to an antenna that transmits simultaneously with other antennas, the standalone SAR was estimated according to following formula to result in substantially conservative SAR values of ≤ 0.4 W/kg to determine simultaneous transmission SAR test exclusion.

$$\text{Estimated SAR} = \frac{\text{Max. Tune up Power}_{(mW)}}{\text{Min. Test Separation Distance}_{(mm)}} \times \frac{\sqrt{f_{(GHz)}}}{7.5}$$

If the minimum test separation distance is < 5 mm, a distance of 5 mm is used for estimated SAR calculation. When the test separation distance is > 50 mm, the 0.4 W/kg is used for SAR-1g.

Tablet Mode

Mode / Band	Frequency (GHz)	Max. Tune-up Power (dBm)	Test Position	Separation Distance (mm)	Estimated SAR (W/kg)
WLAN (DTS)	2.462	18.5	Body	0	0.40
WLAN (NII)	5.24	17.0	Body	0	0.40
WLAN (NII)	5.32	15.5	Body	0	0.40
WLAN (NII)	5.72	15.5	Body	0	0.40
WLAN (NII)	5.825	15.5	Body	0	0.40
BT (DSS)	2.48	11.0	Body	0	0.40

Note:

1. The separation distance is determined from the outer housing of the EUT to the user.
2. When standalone SAR testing is not required, an estimated SAR can be applied to determine simultaneous transmission SAR test exclusion.

FCC SAR Test Report

Laptop Mode

Mode / Band	Frequency (GHz)	Max. Tune-up Power (dBm)	Test Position	Separation Distance (mm)	Estimated SAR (W/kg)
WLAN (DTS)	2.462	20.5	Body	25	0.40
WLAN (NII)	5.24	20.5	Body	25	0.40
WLAN (NII)	5.32	20.5	Body	25	0.40
WLAN (NII)	5.72	20.5	Body	25	0.40
WLAN (NII)	5.825	20.5	Body	25	0.40
BT (DSS)	2.48	11.0	Body	25	0.11

Note:

1. The separation distance is determined from the outer housing of the EUT to the user.
2. When standalone SAR testing is not required, an estimated SAR can be applied to determine simultaneous transmission SAR test exclusion.

<SAR Summation Analysis>

Simultaneous transmission SAR test exclusion is determined for each operating configuration and exposure condition according to the reported standalone SAR of each applicable simultaneous transmitting antenna. When the sum of SAR_{1g} of all simultaneously transmitting antennas in an operating mode and exposure condition combination is within the SAR limit (SAR_{1g} 1.6 W/kg), the simultaneous transmission SAR is not required. When the sum of SAR_{1g} is greater than the SAR limit (SAR_{1g} 1.6 W/kg), SAR test exclusion is determined by the SPLSR.

Mode	Position	1g SAR W/kg					Summing Result 1g SAR W/kg			
		1	2	3	4	5	1+5	2+5	3+5	4+5
		WLAN 2.4GHz Tx1	WLAN 5GHz Tx1	WLAN 5Hz Tx2	WLAN 5GHz Tx1+2	BT Tx2				
Tablet Mode	Rear Face	0.27	0.38	0.42	0.20	0.05	0.32	0.43	0.47	0.25
	Left Side	0.40	0.40	0.40	0.40	0.40	0.80	0.80	0.80	0.80
	Right Side	0.40	0.40	0.40	0.40	0.40	0.80	0.80	0.80	0.80
	Top Side	0.73	1.09	0.97	0.57	0.17	0.90	1.26	1.14	0.74
	Bottom Side	0.40	0.40	0.40	0.40	0.40	0.80	0.80	0.80	0.80
Laptop Mode	Back of Panel	0.09	0.78	1.03	0.39	0.02	0.11	0.80	1.05	0.41
	Top of Panel	0.02	0.19	0.22	0.06	0.00	0.02	0.19	0.22	0.06

Test Engineer : James Chu

5. Calibration of Test Equipment

Equipment	Manufacturer	Model	SN	Cal. Date	Cal. Interval
System Validation Dipole	SPEAG	D2450V2	737	Aug. 24, 2018	1 Year
System Validation Dipole	SPEAG	D5GHzV2	1019	Mar. 21, 2019	1 Year
Dosimetric E-Field Probe	SPEAG	EX3DV4	7375	Dec. 13, 2018	1 Year
Data Acquisition Electronics	SPEAG	DAE4	916	Dec. 12, 2018	1 Year
Spectrum Analyzer	R&S	FSL6	102006	Mar. 26, 2019	1 Year
ENA Series Network Analyzer	Agilent	E5071C	MY46104190	Apr. 16, 2019	1 Year
MXG Analog Signal Generator	Agilent	N5181A	MY50143868	Jul. 03, 2018	1 Year
Power Meter	Anritsu	ML2495A	1218009	Jul. 03, 2018	1 Year
Power Sensor	Anritsu	MA2411B	1207252	Jul. 03, 2018	1 Year
Thermometer	YFE	YF-160A	130504591	Mar. 22, 2019	1 Year

6. Measurement Uncertainty

According to KDB 865664 D01, SAR measurement uncertainty analysis is required in SAR reports only when the highest measured SAR in a frequency band is ≥ 1.5 W/kg for 1-g SAR, and ≥ 3.75 W/kg for 10-g SAR. The procedures described in IEEE Std 1528-2013 should be applied. The expanded SAR measurement uncertainty must be ≤ 30 %, for a confidence interval of $k = 2$. When the highest measured SAR within a frequency band is < 1.5 W/kg for 1-g and < 3.75 W/kg for 10-g, the extensive SAR measurement uncertainty analysis described in IEEE Std 1528-2013 is not required in SAR reports submitted for equipment approval. Hence, the measurement uncertainty analysis is not required in this SAR report because the test result met the condition.

7. Information of the Testing Laboratories

We, Bureau Veritas Consumer Products Services (H.K.) Ltd., Taoyuan Branch, were founded in 1988 to provide our best service in EMC, Radio, Telecom and Safety consultation. Our laboratories are accredited and approved according to ISO/IEC 17025.

If you have any comments, please feel free to contact us at the following:

Taiwan HwaYa EMC/RF/Safety Lab:

Add: No. 19, Hwa Ya 2nd Rd, Wen Hwa Vil., Kwei Shan Hsiang, Taoyuan Hsien 333, Taiwan, R.O.C.

Tel: 886-3-318-3232

Fax: 886-3-327-0892

Taiwan LinKo EMC/RF Lab:

Add: No. 47-2, 14th Ling, Chia Pau Vil., Linkou Dist., New Taipei City 244, Taiwan, R.O.C.

Tel: 886-2-2605-2180

Fax: 886-2-2605-1924

Taiwan HsinChu EMC/RF/Telecom Lab:

Add: E-2, No.1, Li Hsin 1st Road, Hsinchu Science Park, Hsinchu City 30078, Taiwan, R.O.C.

Tel: 886-3-666-8565

Fax: 886-3-666-8323

Email: service.adt@tw.bureauveritas.com

Web Site: www.bureauveritas-adt.com

The road map of all our labs can be found in our web site also.

---END---

Appendix A. SAR Plots of System Verification

The plots for system verification with largest deviation for each SAR system combination are shown as follows.

System Check_H2450_190618

DUT: Dipole 2450 MHz; Type: D2450V2; SN: 737

Communication System: CW; Frequency: 2450 MHz; Duty Cycle: 1:1

Medium: H19T27N3_0618 Medium parameters used: $f = 2450$ MHz; $\sigma = 1.87$ S/m; $\epsilon_r = 39.052$; $\rho = 1000$ kg/m³

Ambient Temperature : 23.5 °C ; Liquid Temperature : 23.2 °C

DASY5 Configuration:

- Probe: EX3DV4 - SN7375; ConvF(7.64, 7.64, 7.64); Calibrated: 2018/12/13
- Sensor-Surface: 1.4mm (Mechanical Surface Detection)
- Electronics: DAE4 Sn916; Calibrated: 2018/12/12
- Phantom: ELI Phantom_1245; Type: QDOVA002AA;
- Measurement SW: DASY52, Version 52.10 (2); SEMCAD X Version 14.6.12 (7470)

Pin=250mW/Area Scan (81x81x1): Interpolated grid: dx=1.200 mm, dy=1.200 mm

Maximum value of SAR (interpolated) = 23.1 W/kg

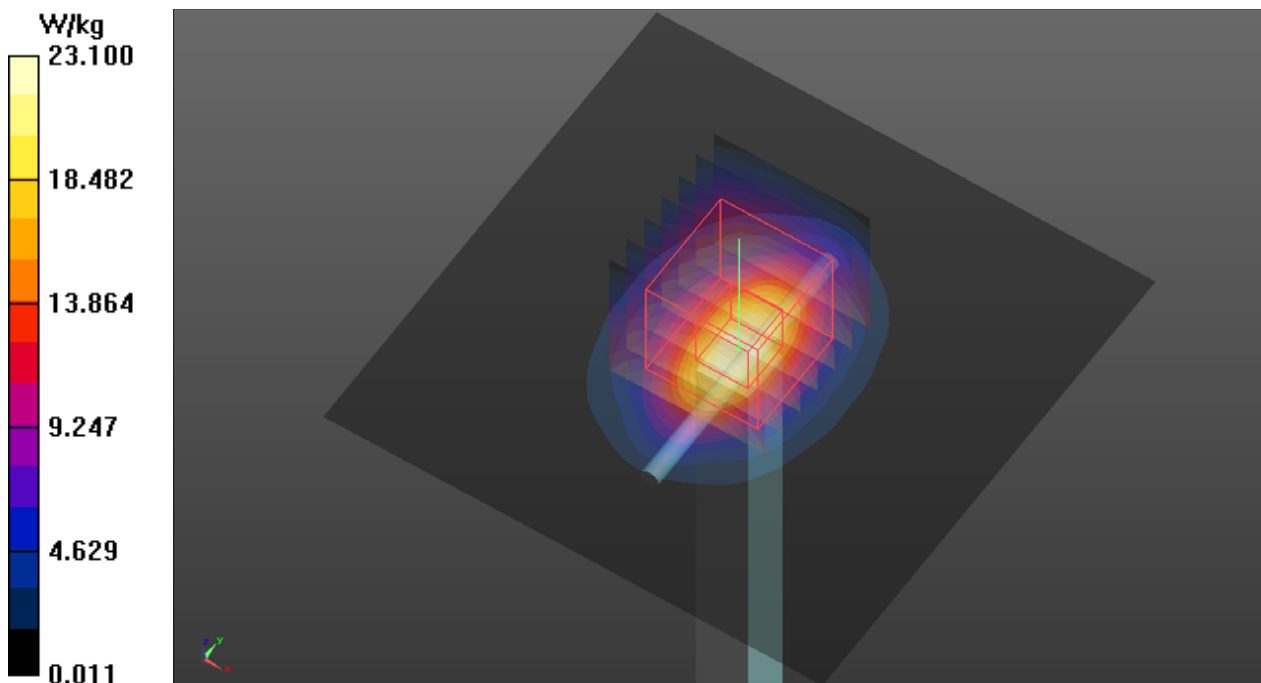
Pin=250mW/Zoom Scan (7x7x7)/Cube 0: Measurement grid: dx=5mm, dy=5mm, dz=5mm

Reference Value = 107.4 V/m; Power Drift = -0.02 dB

Peak SAR (extrapolated) = 28.7 W/kg

SAR(1 g) = 13.5 W/kg; SAR(10 g) = 6.14 W/kg

Maximum value of SAR (measured) = 23.0 W/kg



System Check_H5250_190618

DUT: Dipole 5 GHz; Type: D5GHzV2; SN: 1019

Communication System: CW; Frequency: 5250 MHz; Duty Cycle: 1:1

Medium: H34T60N2_0618 Medium parameters used: $f = 5250$ MHz; $\sigma = 4.564$ S/m; $\epsilon_r = 36.045$; $\rho = 1000$ kg/m³

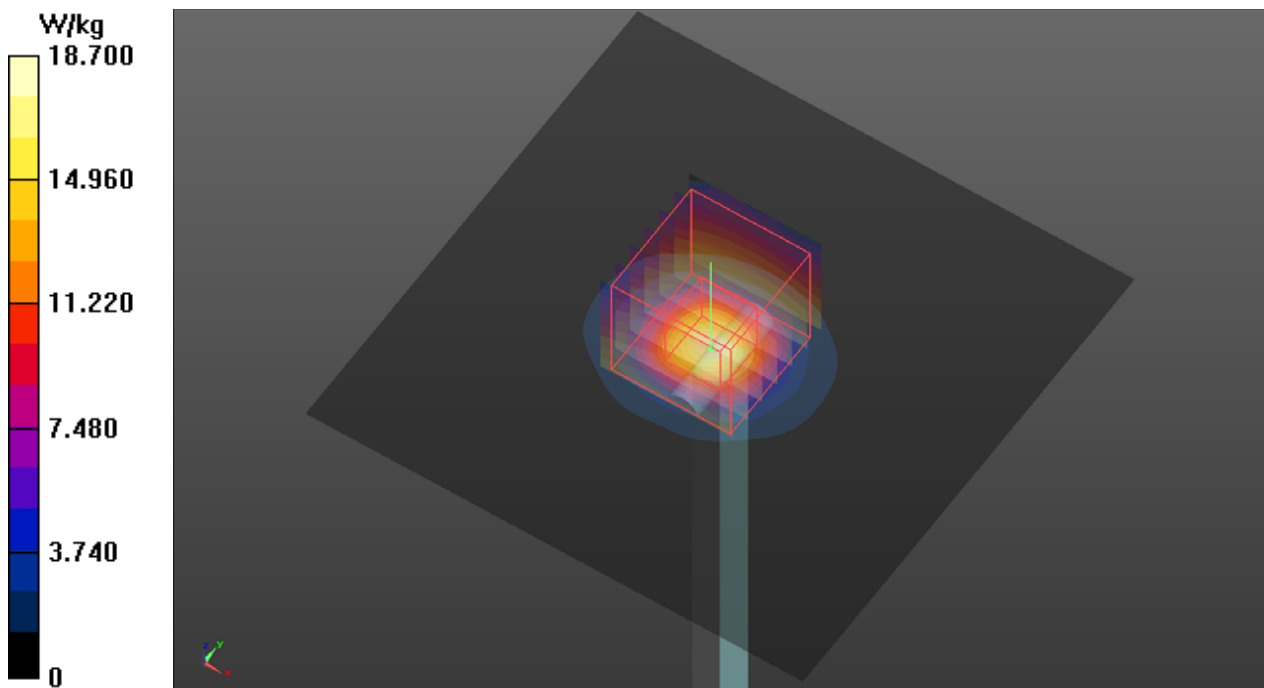
Ambient Temperature : 23.5 °C ; Liquid Temperature : 23.2 °C

DASY5 Configuration:

- Probe: EX3DV4 - SN7375; ConvF(5.29, 5.29, 5.29); Calibrated: 2018/12/13
- Sensor-Surface: 1.4mm (Mechanical Surface Detection)
- Electronics: DAE4 Sn916; Calibrated: 2018/12/12
- Phantom: ELI Phantom_1245; Type: QDOVA002AA;
- Measurement SW: DASY52, Version 52.10 (2); SEMCAD X Version 14.6.12 (7470)

Pin=100mW/Area Scan (91x91x1): Interpolated grid: dx=1.000 mm, dy=1.000 mm
Maximum value of SAR (interpolated) = 18.7 W/kg

Pin=100mW/Zoom Scan (7x7x12)/Cube 0: Measurement grid: dx=4mm, dy=4mm, dz=2mm
Reference Value = 72.83 V/m; Power Drift = 0.04 dB
Peak SAR (extrapolated) = 34.3 W/kg
SAR(1 g) = 8.04 W/kg; SAR(10 g) = 2.31 W/kg
Maximum value of SAR (measured) = 20.3 W/kg



System Check_H5600_190619

DUT: Dipole 5 GHz; Type: D5GHzV2; SN: 1019

Communication System: CW; Frequency: 5600 MHz; Duty Cycle: 1:1

Medium: H34T60N1_0619 Medium parameters used: $f = 5600$ MHz; $\sigma = 5.029$ S/m; $\epsilon_r = 37.237$; $\rho = 1000$ kg/m³

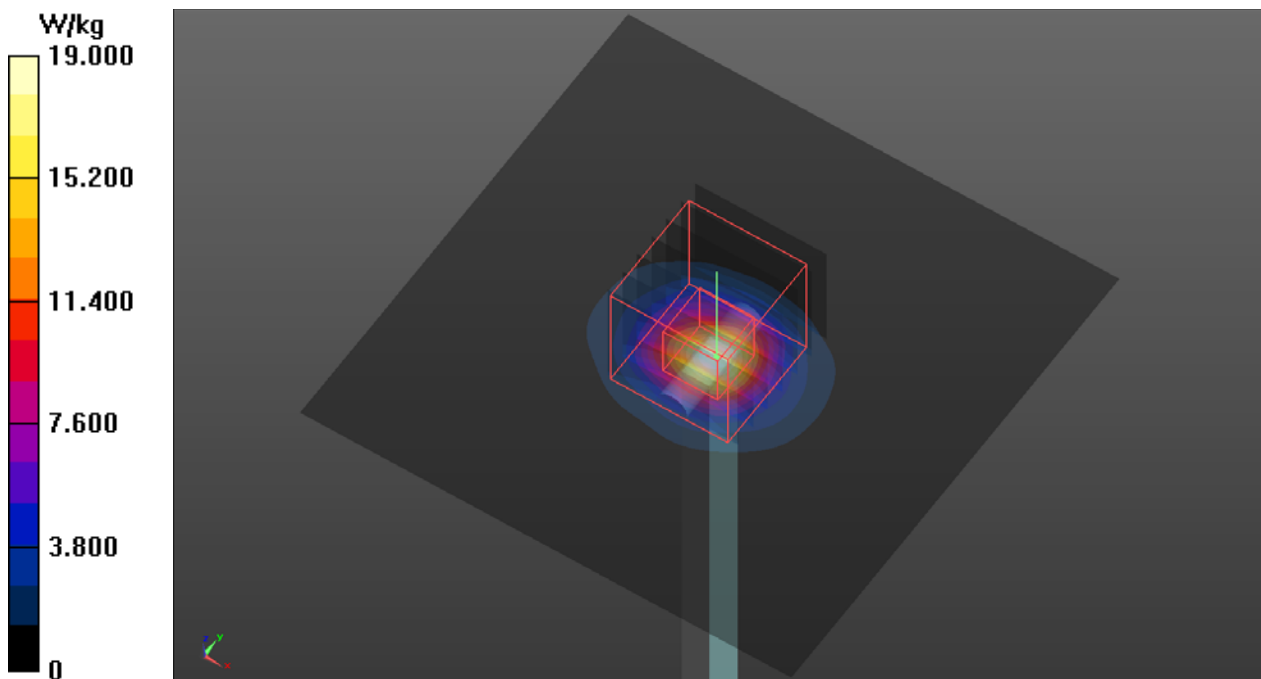
Ambient Temperature : 23.7 °C ; Liquid Temperature : 23.4 °C

DASY5 Configuration:

- Probe: EX3DV4 - SN7375; ConvF(4.69, 4.69, 4.69); Calibrated: 2018/12/13
- Sensor-Surface: 1.4mm (Mechanical Surface Detection)
- Electronics: DAE4 Sn916; Calibrated: 2018/12/12
- Phantom: ELI Phantom_1245; Type: QDOVA002AA;
- Measurement SW: DASY52, Version 52.10 (2); SEMCAD X Version 14.6.12 (7470)

Pin=100mW/Area Scan (91x91x1): Interpolated grid: dx=1.000 mm, dy=1.000 mm
Maximum value of SAR (interpolated) = 19.0 W/kg

Pin=100mW/Zoom Scan (7x7x12)/Cube 0: Measurement grid: dx=4mm, dy=4mm, dz=2mm
Reference Value = 72.15 V/m; Power Drift = -0.18 dB
Peak SAR (extrapolated) = 35.1 W/kg
SAR(1 g) = 8.3 W/kg; SAR(10 g) = 2.31 W/kg
Maximum value of SAR (measured) = 20.9 W/kg



System Check_H5750_190619

DUT: Dipole 5 GHz; Type: D5GHzV2; SN: 1019

Communication System: CW; Frequency: 5750 MHz; Duty Cycle: 1:1

Medium: H34T60N1_0619 Medium parameters used: $f = 5750$ MHz; $\sigma = 5.164$ S/m; $\epsilon_r = 37.001$; $\rho = 1000$ kg/m³

Ambient Temperature : 23.7 °C ; Liquid Temperature : 23.4 °C

DASY5 Configuration:

- Probe: EX3DV4 - SN7375; ConvF(4.85, 4.85, 4.85); Calibrated: 2018/12/13
- Sensor-Surface: 1.4mm (Mechanical Surface Detection)
- Electronics: DAE4 Sn916; Calibrated: 2018/12/12
- Phantom: ELI Phantom_1245; Type: QDOVA002AA;
- Measurement SW: DASY52, Version 52.10 (2); SEMCAD X Version 14.6.12 (7470)

Pin=100mW/Area Scan (91x91x1): Interpolated grid: dx=1.000 mm, dy=1.000 mm

Maximum value of SAR (interpolated) = 17.9 W/kg

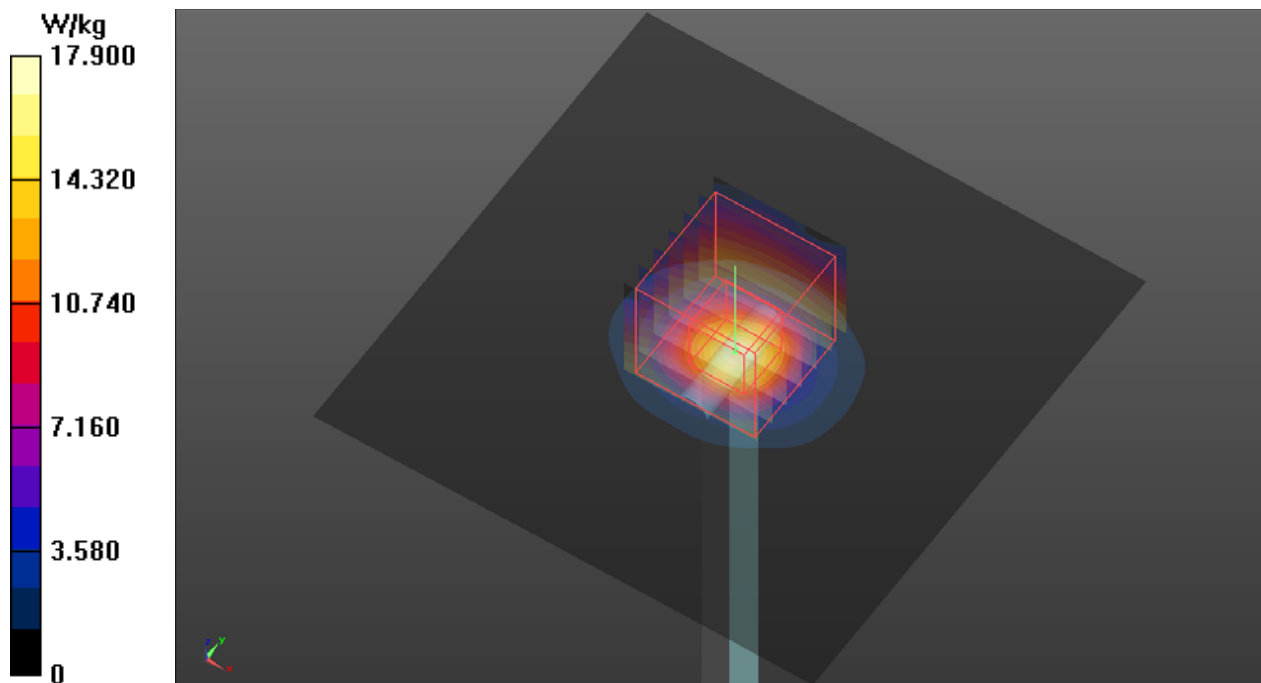
Pin=100mW/Zoom Scan (7x7x12)/Cube 0: Measurement grid: dx=4mm, dy=4mm, dz=2mm

Reference Value = 58.88 V/m; Power Drift = -0.09 dB

Peak SAR (extrapolated) = 34.5 W/kg

SAR(1 g) = 8.34 W/kg; SAR(10 g) = 2.43 W/kg

Maximum value of SAR (measured) = 19.4 W/kg



Appendix B. SAR Plots of SAR Measurement

The SAR plots for highest measured SAR in each exposure configuration, wireless mode and frequency band combination, and measured SAR > 1.5 W/kg are shown as follows.

P01 WLAN2.4G_802.11b_Top Side_0mm_Ch6_Tx2

DUT: 190516C01

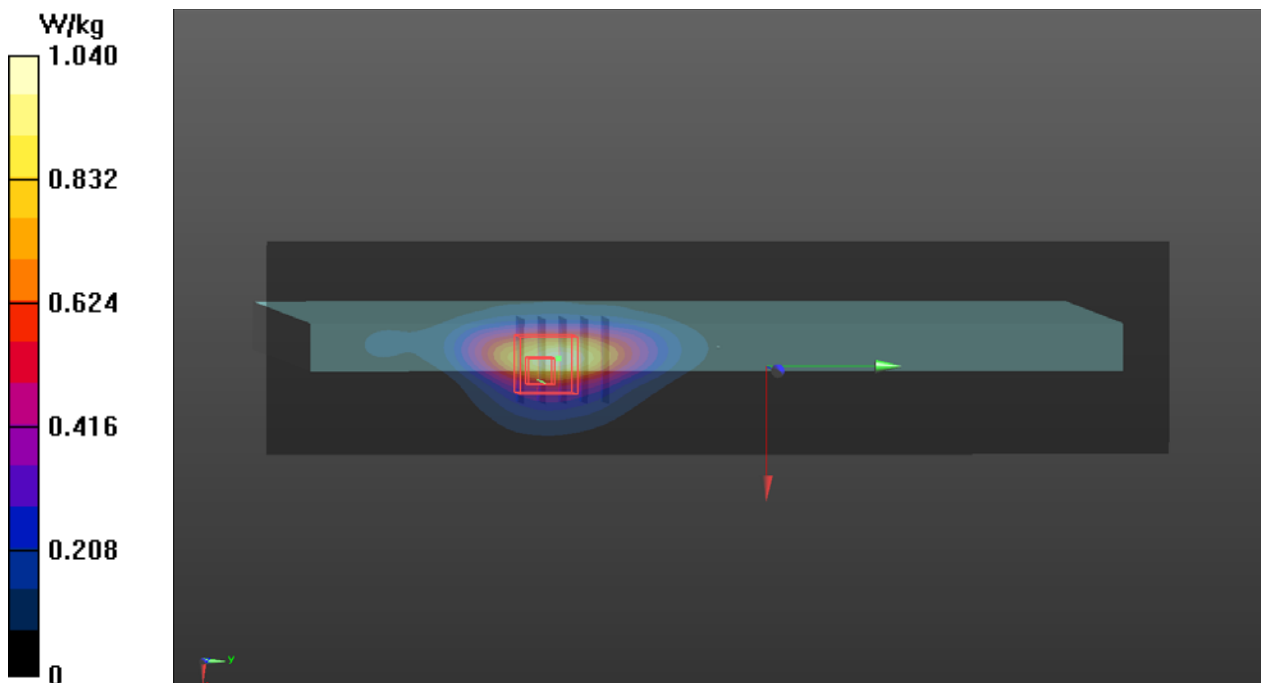
Communication System: WLAN_2.4G; Frequency: 2437 MHz; Duty Cycle: 1:1.02
Medium: H19T27N3_0618 Medium parameters used: $f = 2437$ MHz; $\sigma = 1.857$ S/m; $\epsilon_r = 39.1$; $\rho = 1000$ kg/m³
Ambient Temperature : 23.5 °C ; Liquid Temperature : 23.2 °C

DASY5 Configuration:

- Probe: EX3DV4 - SN7375; ConvF(7.64, 7.64, 7.64); Calibrated: 2018/12/13
- Sensor-Surface: 1.4mm (Mechanical Surface Detection)
- Electronics: DAE4 Sn916; Calibrated: 2018/12/12
- Phantom: ELI Phantom_1245; Type: QDOVA002AA;
- Measurement SW: DASY52, Version 52.10 (2); SEMCAD X Version 14.6.12 (7470)

- **Area Scan (71x291x1):** Interpolated grid: dx=1.200 mm, dy=1.200 mm
Maximum value of SAR (interpolated) = 1.04 W/kg

- **Zoom Scan (5x5x7)/Cube 0:** Measurement grid: dx=8mm, dy=8mm, dz=5mm
Reference Value = 21.57 V/m; Power Drift = -0.14 dB
Peak SAR (extrapolated) = 2.23 W/kg
SAR(1 g) = 0.873 W/kg; SAR(10 g) = 0.381 W/kg
Maximum value of SAR (measured) = 1.49 W/kg



P02 WLAN5.2G_802.11ac VHT80_Top Side_0mm_Ch42_Tx1

DUT: 190516C01

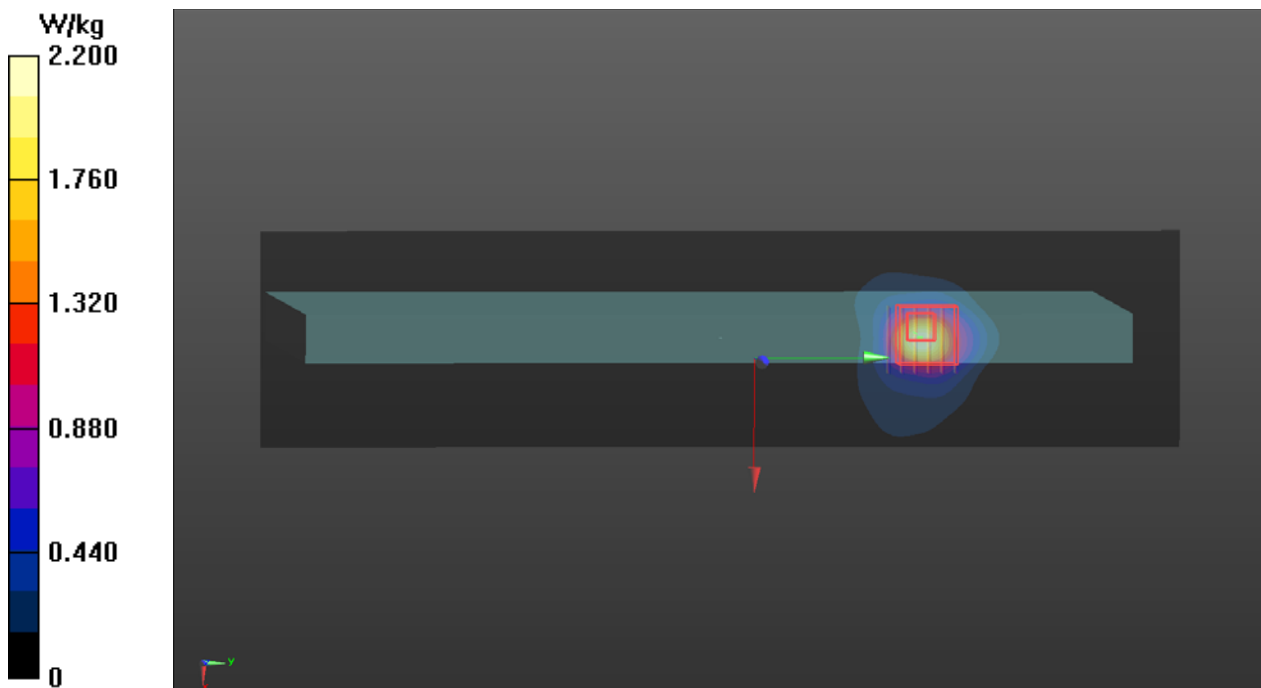
Communication System: WLAN_5G; Frequency: 5210 MHz; Duty Cycle: 1:1.02
Medium: H34T60N2_0618 Medium parameters used: $f = 5210$ MHz; $\sigma = 4.525$ S/m; $\epsilon_r = 36.12$; $\rho = 1000$ kg/m³
Ambient Temperature : 23.5 °C ; Liquid Temperature : 23.2 °C

DASY5 Configuration:

- Probe: EX3DV4 - SN7375; ConvF(5.29, 5.29, 5.29); Calibrated: 2018/12/13
- Sensor-Surface: 1.4mm (Mechanical Surface Detection)
- Electronics: DAE4 Sn916; Calibrated: 2018/12/12
- Phantom: ELI Phantom_1245; Type: QDOVA002AA;
- Measurement SW: DASY52, Version 52.10 (2); SEMCAD X Version 14.6.12 (7470)

- **Area Scan (81x341x1):** Interpolated grid: dx=1.000 mm, dy=1.000 mm
Maximum value of SAR (interpolated) = 2.20 W/kg

- **Zoom Scan (6x6x12)/Cube 0:** Measurement grid: dx=5mm, dy=5mm, dz=2mm
Reference Value = 0 V/m; Power Drift =0.02 dB
Peak SAR (extrapolated) = 4.22 W/kg
SAR(1 g) = 0.991 W/kg; SAR(10 g) = 0.315 W/kg
Maximum value of SAR (measured) = 2.43 W/kg



P03 WLAN5.6G_802.11ac VHT80_Top Side_0mm_Ch106_Tx2

DUT: 190516C01

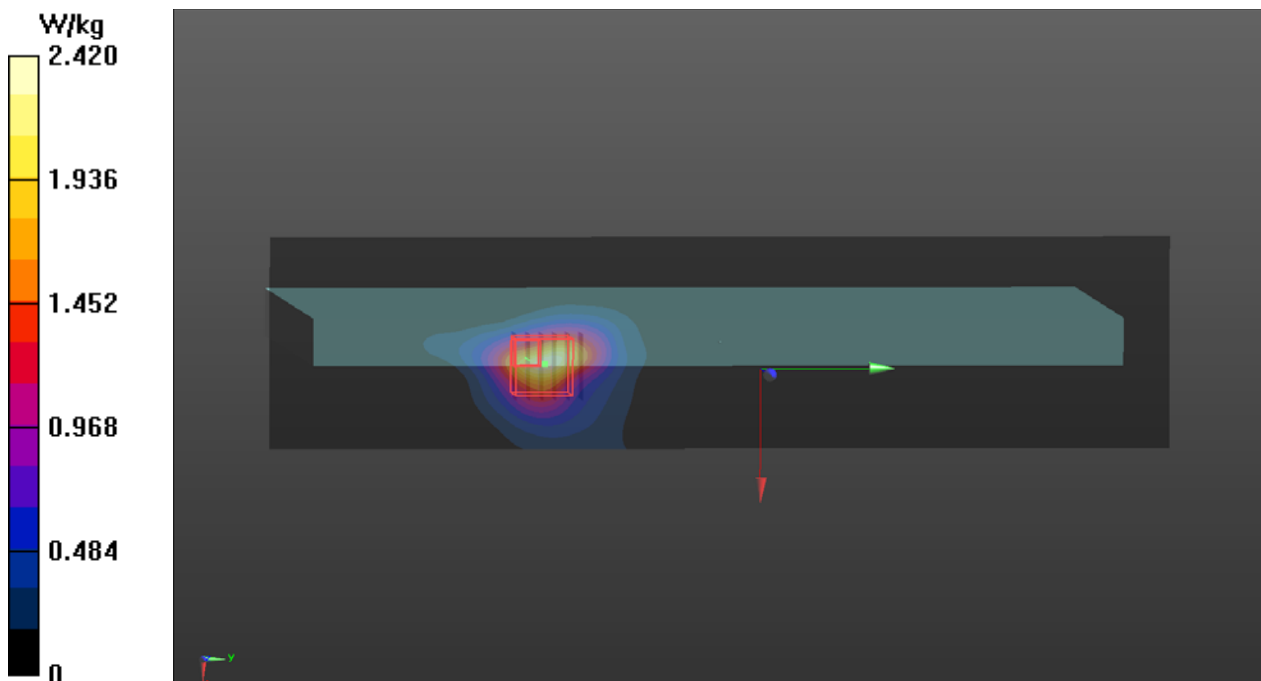
Communication System: WLAN_5G; Frequency: 5530 MHz; Duty Cycle: 1:1.01
Medium: H34T60N1_0619 Medium parameters used: $f = 5530$ MHz; $\sigma = 4.936$ S/m; $\epsilon_r = 37.233$; $\rho = 1000$ kg/m³
Ambient Temperature : 23.7 °C ; Liquid Temperature : 23.4 °C

DASY5 Configuration:

- Probe: EX3DV4 - SN7375; ConvF(4.69, 4.69, 4.69); Calibrated: 2018/12/13
- Sensor-Surface: 1.4mm (Mechanical Surface Detection)
- Electronics: DAE4 Sn916; Calibrated: 2018/12/12
- Phantom: ELI Phantom_1245; Type: QDOVA002AA;
- Measurement SW: DASY52, Version 52.10 (2); SEMCAD X Version 14.6.12 (7470)

- **Area Scan (81x341x1):** Interpolated grid: dx=1.000 mm, dy=1.000 mm
Maximum value of SAR (interpolated) = 2.42 W/kg

- **Zoom Scan (6x6x12)/Cube 0:** Measurement grid: dx=5mm, dy=5mm, dz=2mm
Reference Value = 17.81 V/m; Power Drift = -0.15 dB
Peak SAR (extrapolated) = 3.54 W/kg
SAR(1 g) = 0.796 W/kg; SAR(10 g) = 0.278 W/kg
Maximum value of SAR (measured) = 2.12 W/kg



P04 WLAN5.8G_802.11ac VHT80_Top Side_0mm_Ch155_Tx2

DUT: 190516C01

Communication System: WLAN_5G; Frequency: 5775 MHz; Duty Cycle: 1:1.01

Medium: H34T60N1_0619 Medium parameters used: $f = 5775$ MHz; $\sigma = 5.21$ S/m; $\epsilon_r = 36.899$; $\rho = 1000$ kg/m³

Ambient Temperature : 23.7 °C ; Liquid Temperature : 23.4 °C

DASY5 Configuration:

- Probe: EX3DV4 - SN7375; ConvF(4.85, 4.85, 4.85); Calibrated: 2018/12/13
- Sensor-Surface: 1.4mm (Mechanical Surface Detection)
- Electronics: DAE4 Sn916; Calibrated: 2018/12/12
- Phantom: ELI Phantom_1245; Type: QDOVA002AA;
- Measurement SW: DASY52, Version 52.10 (2); SEMCAD X Version 14.6.12 (7470)

- **Area Scan (81x341x1):** Interpolated grid: dx=1.000 mm, dy=1.000 mm

Maximum value of SAR (interpolated) = 2.78 W/kg

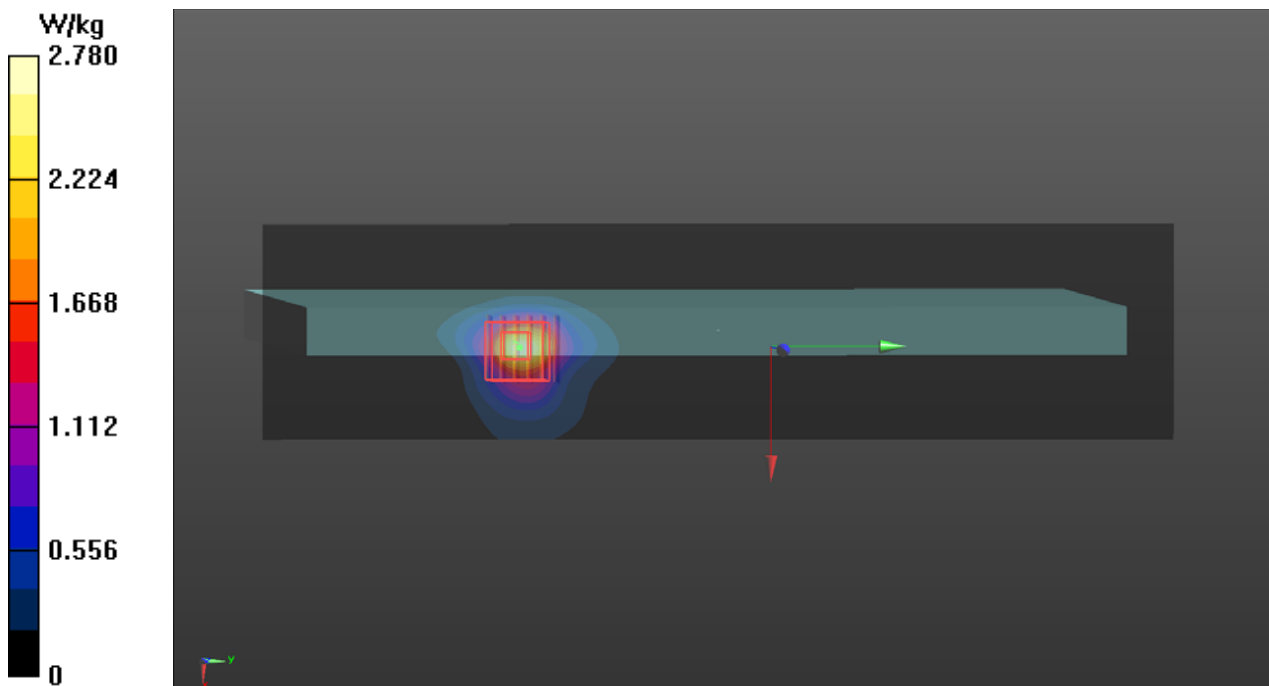
- **Zoom Scan (6x6x12)/Cube 0:** Measurement grid: dx=5mm, dy=5mm, dz=2mm

Reference Value = 21.35 V/m; Power Drift = -0.12 dB

Peak SAR (extrapolated) = 5.10 W/kg

SAR(1 g) = 0.916 W/kg; SAR(10 g) = 0.240 W/kg

Maximum value of SAR (measured) = 2.27 W/kg



P05 BT_BDR_Top Side_0mm_Ch39_Tx2

DUT: 190516C01

Communication System: BT; Frequency: 2441 MHz; Duty Cycle: 1:1.3

Medium: H19T27N3_0618 Medium parameters used: $f = 2441$ MHz; $\sigma = 1.861$ S/m; $\epsilon_r = 39.088$; $\rho = 1000$ kg/m³

Ambient Temperature : 23.5 °C ; Liquid Temperature : 23.2 °C

DASY5 Configuration:

- Probe: EX3DV4 - SN7375; ConvF(7.64, 7.64, 7.64); Calibrated: 2018/12/13
- Sensor-Surface: 1.4mm (Mechanical Surface Detection)
- Electronics: DAE4 Sn916; Calibrated: 2018/12/12
- Phantom: ELI Phantom_1245; Type: QDOVA002AA;
- Measurement SW: DASY52, Version 52.10 (2); SEMCAD X Version 14.6.12 (7470)

- **Area Scan (71x291x1):** Interpolated grid: dx=1.200 mm, dy=1.200 mm

Maximum value of SAR (interpolated) = 0.273 W/kg

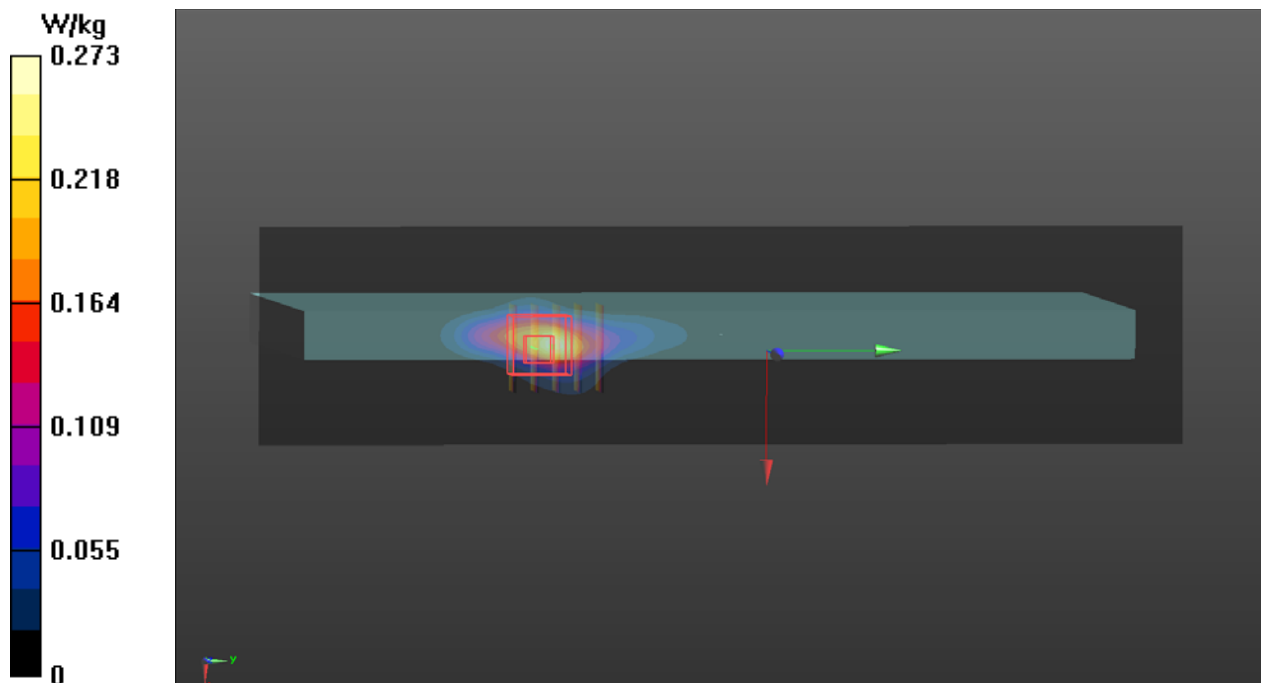
- **Zoom Scan (5x5x7)/Cube 0:** Measurement grid: dx=8mm, dy=8mm, dz=5mm

Reference Value = 10.88 V/m; Power Drift = -0.14 dB

Peak SAR (extrapolated) = 0.442 W/kg

SAR(1 g) = 0.122 W/kg; SAR(10 g) = 0.035 W/kg

Maximum value of SAR (measured) = 0.243 W/kg



P06 WLAN2.4G_802.11b_Back of Panel_25mm_Ch6_Tx2

DUT: 190516C01

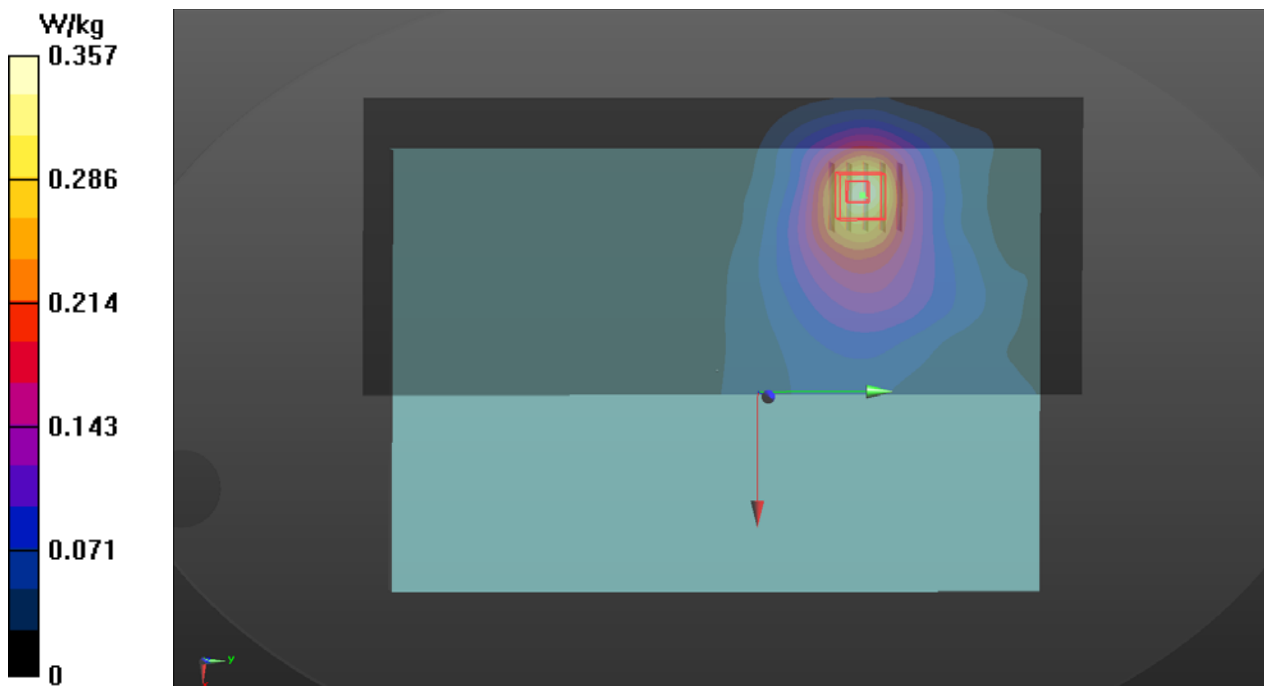
Communication System: WLAN_2.4G; Frequency: 2437 MHz; Duty Cycle: 1:1.02
Medium: H19T27N3_0618 Medium parameters used: $f = 2437$ MHz; $\sigma = 1.857$ S/m; $\epsilon_r = 39.1$; $\rho = 1000$ kg/m³
Ambient Temperature : 23.5 °C ; Liquid Temperature : 23.2 °C

DASY5 Configuration:

- Probe: EX3DV4 - SN7375; ConvF(7.64, 7.64, 7.64); Calibrated: 2018/12/13
- Sensor-Surface: 1.4mm (Mechanical Surface Detection)
- Electronics: DAE4 Sn916; Calibrated: 2018/12/12
- Phantom: ELI Phantom_1245; Type: QDOVA002AA;
- Measurement SW: DASY52, Version 52.10 (2); SEMCAD X Version 14.6.12 (7470)

- **Area Scan (121x291x1)**: Interpolated grid: dx=1.200 mm, dy=1.200 mm
Maximum value of SAR (interpolated) = 0.357 W/kg

- **Zoom Scan (5x5x7)/Cube 0**: Measurement grid: dx=8mm, dy=8mm, dz=5mm
Reference Value = 9.078 V/m; Power Drift = -0.02 dB
Peak SAR (extrapolated) = 0.196 W/kg
SAR(1 g) = 0.108 W/kg; SAR(10 g) = 0.060 W/kg
Maximum value of SAR (measured) = 0.160 W/kg



P07 WLAN5.3G_802.11n HT40_Back of Panel_25mm_Ch54_Tx2

DUT: 190516C01

Communication System: WLAN_5G; Frequency: 5270 MHz; Duty Cycle: 1:1.03
Medium: H34T60N2_0618 Medium parameters used: $f = 5270$ MHz; $\sigma = 4.587$ S/m; $\epsilon_r = 36.037$; $\rho = 1000$ kg/m³
Ambient Temperature : 23.5 °C ; Liquid Temperature : 23.2 °C

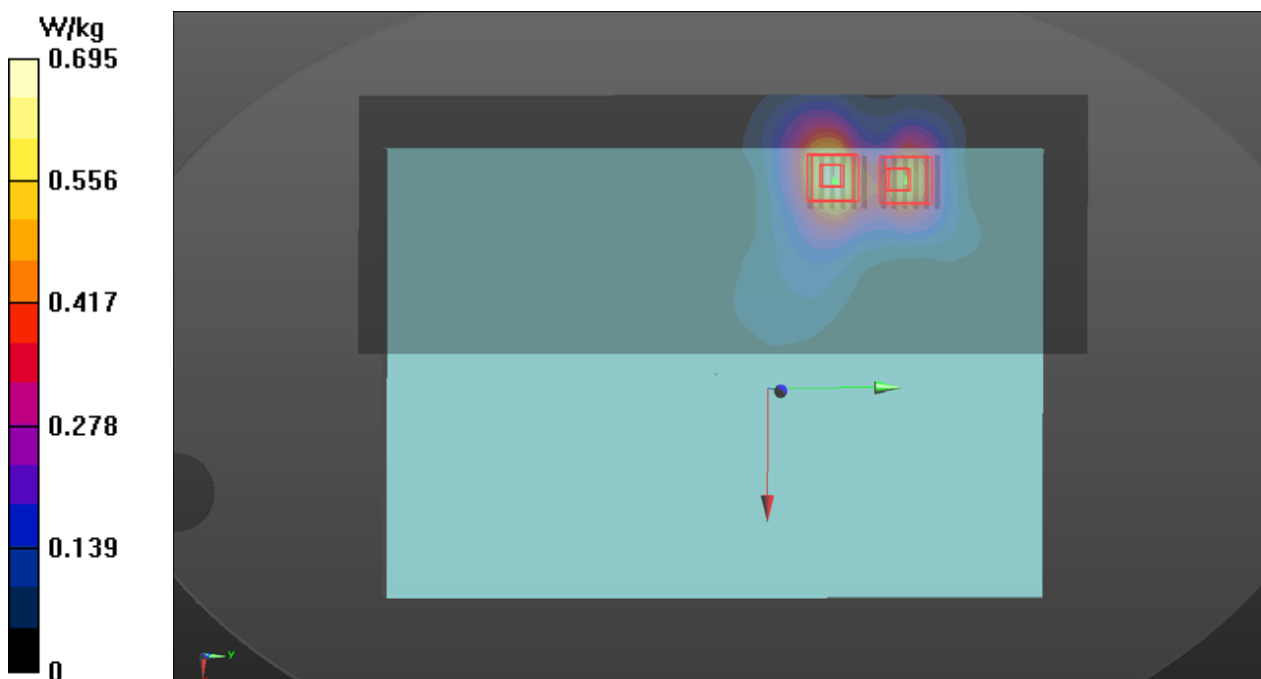
DASY5 Configuration:

- Probe: EX3DV4 - SN7375; ConvF(5.29, 5.29, 5.29); Calibrated: 2018/12/13
- Sensor-Surface: 1.4mm (Mechanical Surface Detection)
- Electronics: DAE4 Sn916; Calibrated: 2018/12/12
- Phantom: ELI Phantom_1245; Type: QDOVA002AA;
- Measurement SW: DASY52, Version 52.10 (2); SEMCAD X Version 14.6.12 (7470)

- **Area Scan (121x341x1):** Interpolated grid: dx=1.000 mm, dy=1.000 mm
Maximum value of SAR (interpolated) = 0.695 W/kg

- **Zoom Scan (6x6x12)/Cube 0:** Measurement grid: dx=5mm, dy=5mm, dz=2mm
Reference Value = 13.57 V/m; Power Drift = 0.01 dB
Peak SAR (extrapolated) = 1.38 W/kg
SAR(1 g) = 0.336 W/kg; SAR(10 g) = 0.140 W/kg
Maximum value of SAR (measured) = 0.697 W/kg

- **Zoom Scan (6x6x12)/Cube 1:** Measurement grid: dx=5mm, dy=5mm, dz=2mm
Reference Value = 13.57 V/m; Power Drift = 0.01 dB
Peak SAR (extrapolated) = 0.955 W/kg
SAR(1 g) = 0.293 W/kg; SAR(10 g) = 0.119 W/kg
Maximum value of SAR (measured) = 0.654 W/kg



P08 WLAN5.6G_802.11ac VHT80_Back of Panel_25mm_Ch138_Tx2

DUT: 190516C01

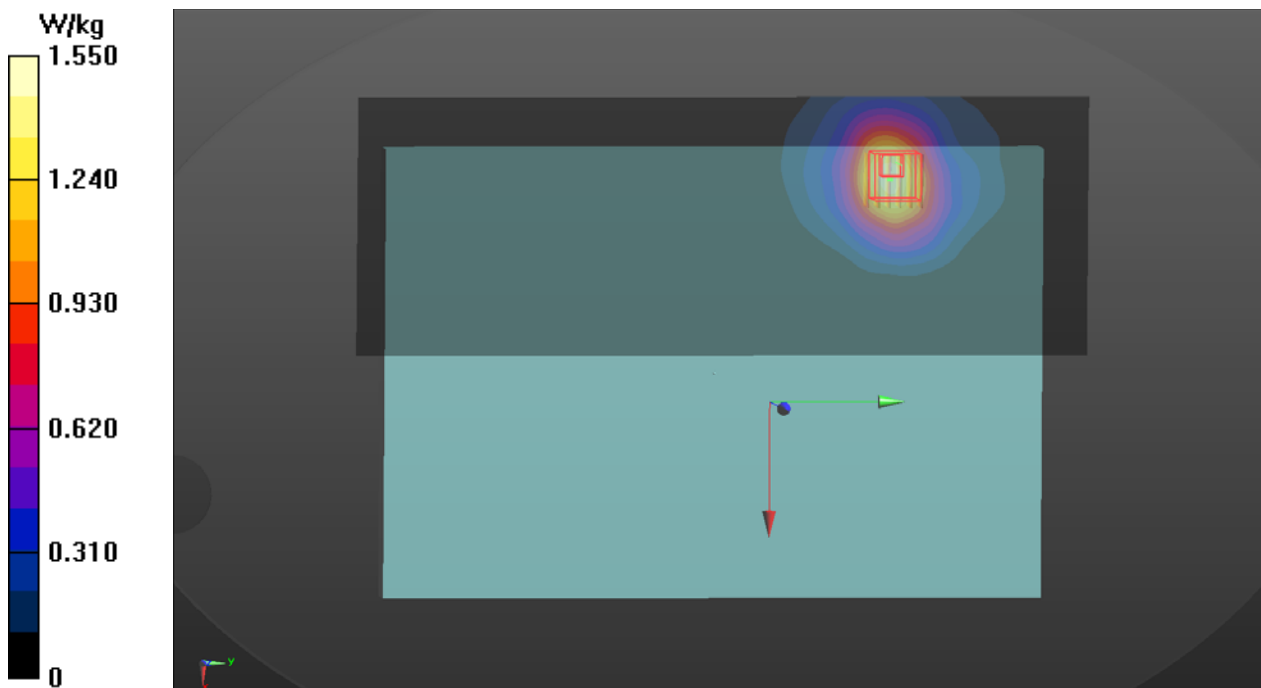
Communication System: WLAN_5G; Frequency: 5690 MHz; Duty Cycle: 1:1.01
Medium: H34T60N1_0619 Medium parameters used: $f = 5690$ MHz; $\sigma = 5.144$ S/m; $\epsilon_r = 37.062$; $\rho = 1000$ kg/m³
Ambient Temperature : 23.7 °C ; Liquid Temperature : 23.4 °C

DASY5 Configuration:

- Probe: EX3DV4 - SN7375; ConvF(4.85, 4.85, 4.85); Calibrated: 2018/12/13
- Sensor-Surface: 1.4mm (Mechanical Surface Detection)
- Electronics: DAE4 Sn916; Calibrated: 2018/12/12
- Phantom: ELI Phantom_1245; Type: QDOVA002AA;
- Measurement SW: DASY52, Version 52.10 (2); SEMCAD X Version 14.6.12 (7470)

- **Area Scan (121x341x1):** Interpolated grid: dx=1.000 mm, dy=1.000 mm
Maximum value of SAR (interpolated) = 1.55 W/kg

- **Zoom Scan (6x6x12)/Cube 0:** Measurement grid: dx=5mm, dy=5mm, dz=2mm
Reference Value = 16.18 V/m; Power Drift = 0.07 dB
Peak SAR (extrapolated) = 2.85 W/kg
SAR(1 g) = 0.795 W/kg; SAR(10 g) = 0.307 W/kg
Maximum value of SAR (measured) = 1.72 W/kg



P09 WLAN5.8G_802.11n HT40_Back of Panel_25mm_Ch159_Tx2

DUT: 190516C01

Communication System: WLAN_5G; Frequency: 5795 MHz; Duty Cycle: 1:1.03

Medium: H34T60N1_0619 Medium parameters used: $f = 5795$ MHz; $\sigma = 5.253$ S/m; $\epsilon_r = 36.894$; $\rho = 1000$ kg/m³

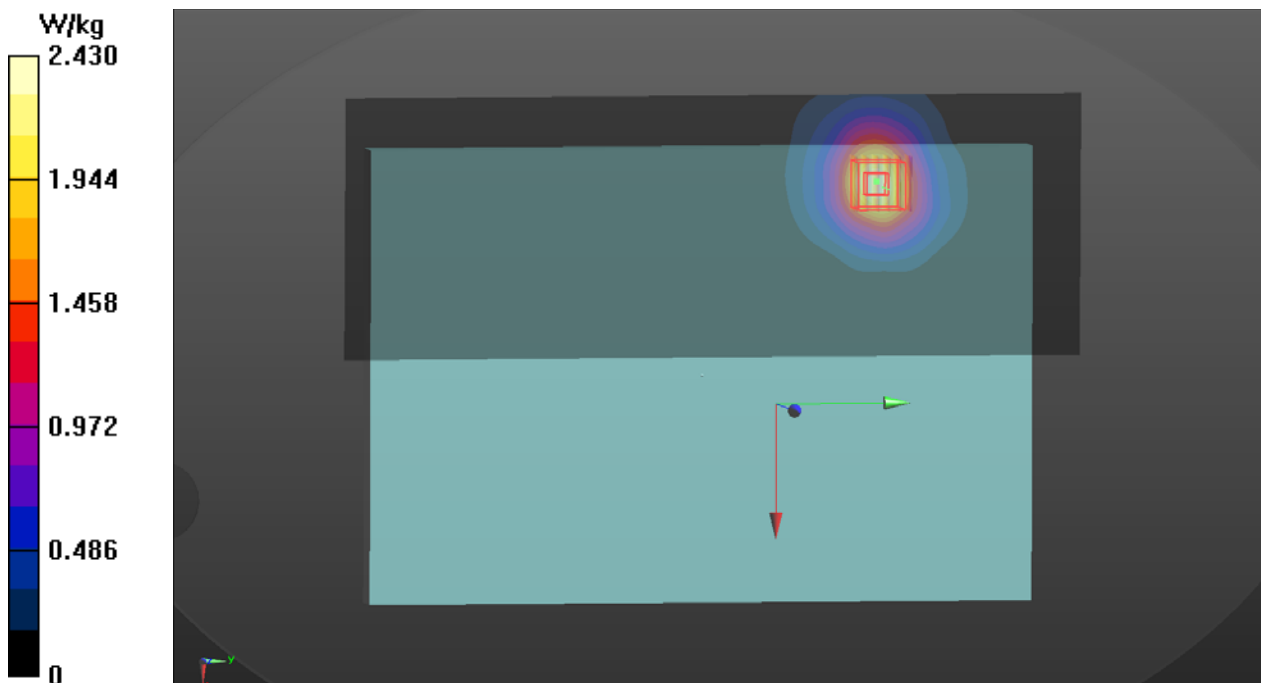
Ambient Temperature : 23.7 °C ; Liquid Temperature : 23.4 °C

DASY5 Configuration:

- Probe: EX3DV4 - SN7375; ConvF(4.85, 4.85, 4.85); Calibrated: 2018/12/13
- Sensor-Surface: 1.4mm (Mechanical Surface Detection)
- Electronics: DAE4 Sn916; Calibrated: 2018/12/12
- Phantom: ELI Phantom_1245; Type: QDOVA002AA;
- Measurement SW: DASY52, Version 52.10 (2); SEMCAD X Version 14.6.12 (7470)

- **Area Scan (121x341x1):** Interpolated grid: dx=1.000 mm, dy=1.000 mm
Maximum value of SAR (interpolated) = 2.43 W/kg

- **Zoom Scan (6x6x12)/Cube 0:** Measurement grid: dx=5mm, dy=5mm, dz=2mm
Reference Value = 21.62 V/m; Power Drift = 0.01 dB
Peak SAR (extrapolated) = 3.53 W/kg
SAR(1 g) = 0.967 W/kg; SAR(10 g) = 0.428 W/kg
Maximum value of SAR (measured) = 2.17 W/kg



P10 BT_BDR_Back of Panel_25mm_Ch39_Tx2

DUT: 190516C01

Communication System: BT; Frequency: 2441 MHz; Duty Cycle: 1:1.3

Medium: H19T27N3_0618 Medium parameters used: $f = 2441$ MHz; $\sigma = 1.861$ S/m; $\epsilon_r = 39.088$; $\rho = 1000$ kg/m³

Ambient Temperature : 23.5 °C ; Liquid Temperature : 23.2 °C

DASY5 Configuration:

- Probe: EX3DV4 - SN7375; ConvF(7.64, 7.64, 7.64); Calibrated: 2018/12/13
- Sensor-Surface: 1.4mm (Mechanical Surface Detection)
- Electronics: DAE4 Sn916; Calibrated: 2018/12/12
- Phantom: ELI Phantom_1245; Type: QDOVA002AA;
- Measurement SW: DASY52, Version 52.10 (2); SEMCAD X Version 14.6.12 (7470)

- **Area Scan (121x291x1):** Interpolated grid: dx=1.200 mm, dy=1.200 mm

Maximum value of SAR (interpolated) = 0.0263 W/kg

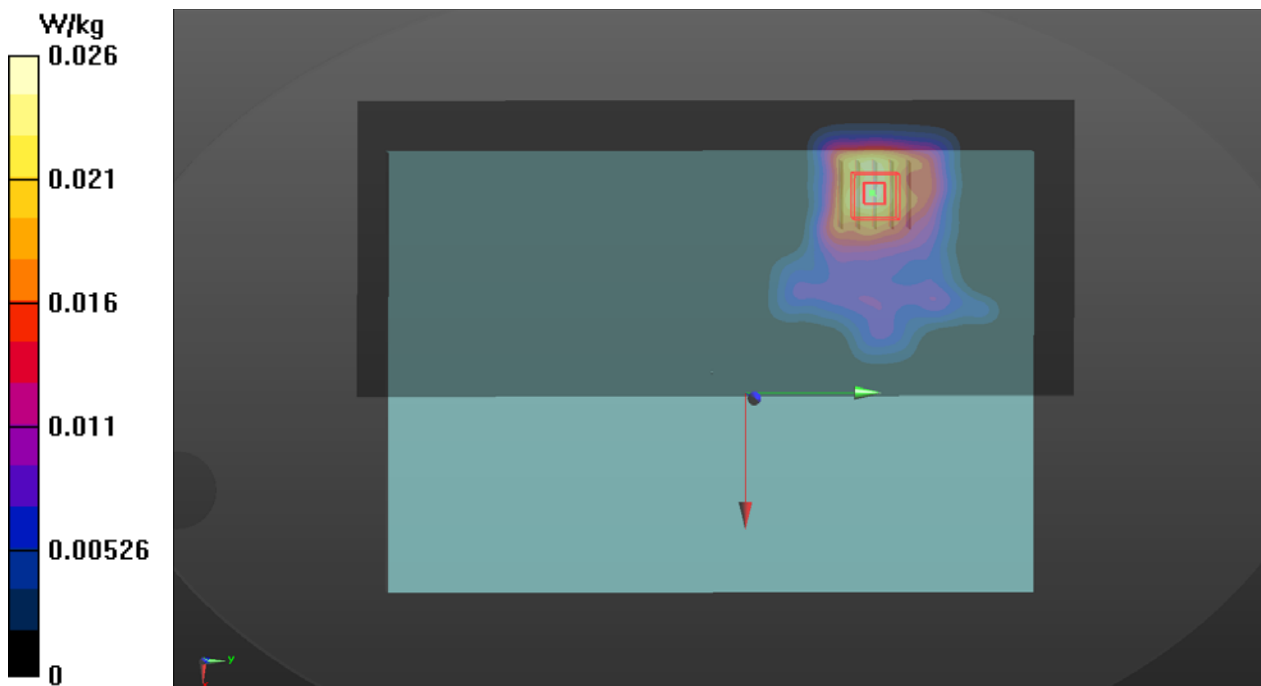
- **Zoom Scan (5x5x7)/Cube 0:** Measurement grid: dx=8mm, dy=8mm, dz=5mm

Reference Value = 3.752 V/m; Power Drift = -0.10 dB

Peak SAR (extrapolated) = 0.0300 W/kg

SAR(1 g) = 0.016 W/kg; SAR(10 g) = 0.00965 W/kg

Maximum value of SAR (measured) = 0.0254 W/kg





Appendix C. Calibration Certificate for Probe and Dipole

The SPEAG calibration certificates are shown as follows.



Accredited by the Swiss Accreditation Service (SAS)
The Swiss Accreditation Service is one of the signatories to the EA
Multilateral Agreement for the recognition of calibration certificates

Accreditation No.: **SCS 0108**

Client **B.V. ADT (Auden)**

Certificate No: **D2450V2-737_Aug18**

CALIBRATION CERTIFICATE

Object **D2450V2 - SN:737**

Calibration procedure(s) **QA CAL-05.v10
Calibration procedure for dipole validation kits above 700 MHz**

Calibration date: **August 24, 2018**

This calibration certificate documents the traceability to national standards, which realize the physical units of measurements (SI).
The measurements and the uncertainties with confidence probability are given on the following pages and are part of the certificate.

All calibrations have been conducted in the closed laboratory facility: environment temperature (22 ± 3)°C and humidity < 70%.

Calibration Equipment used (M&TE critical for calibration)

Primary Standards	ID #	Cal Date (Certificate No.)	Scheduled Calibration
Power meter NRP	SN: 104778	04-Apr-18 (No. 217-02672/02673)	Apr-19
Power sensor NRP-Z91	SN: 103244	04-Apr-18 (No. 217-02672)	Apr-19
Power sensor NRP-Z91	SN: 103245	04-Apr-18 (No. 217-02673)	Apr-19
Reference 20 dB Attenuator	SN: 5058 (20k)	04-Apr-18 (No. 217-02682)	Apr-19
Type-N mismatch combination	SN: 5047.2 / 06327	04-Apr-18 (No. 217-02683)	Apr-19
Reference Probe EX3DV4	SN: 7349	30-Dec-17 (No. EX3-7349_Dec17)	Dec-18
DAE4	SN: 601	26-Oct-17 (No. DAE4-601_Oct17)	Oct-18
Secondary Standards	ID #	Check Date (in house)	Scheduled Check
Power meter EPM-442A	SN: GB37480704	07-Oct-15 (in house check Oct-16)	In house check: Oct-18
Power sensor HP 8481A	SN: US37292783	07-Oct-15 (in house check Oct-16)	In house check: Oct-18
Power sensor HP 8481A	SN: MY41092317	07-Oct-15 (in house check Oct-16)	In house check: Oct-18
RF generator R&S SMT-06	SN: 100972	15-Jun-15 (in house check Oct-16)	In house check: Oct-18
Network Analyzer Agilent E8358A	SN: US41080477	31-Mar-14 (in house check Oct-17)	In house check: Oct-18

Calibrated by: **Manu Seitz** Laboratory Technician

Approved by: **Katja Pokovic** Technical Manager

Signature

Issued: August 24, 2018

This calibration certificate shall not be reproduced except in full without written approval of the laboratory.



Accredited by the Swiss Accreditation Service (SAS)

The Swiss Accreditation Service is one of the signatories to the EA
Multilateral Agreement for the recognition of calibration certificates

Accreditation No.: **SCS 0108**

Glossary:

TSL	tissue simulating liquid
ConvF	sensitivity in TSL / NORM x,y,z
N/A	not applicable or not measured

Calibration is Performed According to the Following Standards:

- IEEE Std 1528-2013, "IEEE Recommended Practice for Determining the Peak Spatial-Averaged Specific Absorption Rate (SAR) in the Human Head from Wireless Communications Devices: Measurement Techniques", June 2013
- IEC 62209-1, "Measurement procedure for the assessment of Specific Absorption Rate (SAR) from hand-held and body-mounted devices used next to the ear (frequency range of 300 MHz to 6 GHz)", July 2016
- IEC 62209-2, "Procedure to determine the Specific Absorption Rate (SAR) for wireless communication devices used in close proximity to the human body (frequency range of 30 MHz to 6 GHz)", March 2010
- KDB 865664, "SAR Measurement Requirements for 100 MHz to 6 GHz"

Additional Documentation:

- DASY4/5 System Handbook

Methods Applied and Interpretation of Parameters:

- Measurement Conditions:** Further details are available from the Validation Report at the end of the certificate. All figures stated in the certificate are valid at the frequency indicated.
- Antenna Parameters with TSL:** The dipole is mounted with the spacer to position its feed point exactly below the center marking of the flat phantom section, with the arms oriented parallel to the body axis.
- Feed Point Impedance and Return Loss:** These parameters are measured with the dipole positioned under the liquid filled phantom. The impedance stated is transformed from the measurement at the SMA connector to the feed point. The Return Loss ensures low reflected power. No uncertainty required.
- Electrical Delay:** One-way delay between the SMA connector and the antenna feed point. No uncertainty required.
- SAR measured:** SAR measured at the stated antenna input power.
- SAR normalized:** SAR as measured, normalized to an input power of 1 W at the antenna connector.
- SAR for nominal TSL parameters:** The measured TSL parameters are used to calculate the nominal SAR result.

The reported uncertainty of measurement is stated as the standard uncertainty of measurement multiplied by the coverage factor $k=2$, which for a normal distribution corresponds to a coverage probability of approximately 95%.

Measurement Conditions

DASY system configuration, as far as not given on page 1.

DASY Version	DASY5	V52.10.1
Extrapolation	Advanced Extrapolation	
Phantom	Modular Flat Phantom	
Distance Dipole Center - TSL	10 mm	with Spacer
Zoom Scan Resolution	dx, dy, dz = 5 mm	
Frequency	2450 MHz ± 1 MHz	

Head TSL parameters

The following parameters and calculations were applied.

	Temperature	Permittivity	Conductivity
Nominal Head TSL parameters	22.0 °C	39.2	1.80 mho/m
Measured Head TSL parameters	(22.0 ± 0.2) °C	37.7 ± 6 %	1.86 mho/m ± 6 %
Head TSL temperature change during test	< 0.5 °C	----	----

SAR result with Head TSL

SAR averaged over 1 cm³ (1 g) of Head TSL	Condition	
SAR measured	250 mW input power	13.2 W/kg
SAR for nominal Head TSL parameters	normalized to 1W	51.5 W/kg ± 17.0 % (k=2)

SAR averaged over 10 cm³ (10 g) of Head TSL	condition	
SAR measured	250 mW input power	6.13 W/kg
SAR for nominal Head TSL parameters	normalized to 1W	24.2 W/kg ± 16.5 % (k=2)

Body TSL parameters

The following parameters and calculations were applied.

	Temperature	Permittivity	Conductivity
Nominal Body TSL parameters	22.0 °C	52.7	1.95 mho/m
Measured Body TSL parameters	(22.0 ± 0.2) °C	51.8 ± 6 %	2.02 mho/m ± 6 %
Body TSL temperature change during test	< 0.5 °C	----	----

SAR result with Body TSL

SAR averaged over 1 cm³ (1 g) of Body TSL	Condition	
SAR measured	250 mW input power	12.9 W/kg
SAR for nominal Body TSL parameters	normalized to 1W	50.5 W/kg ± 17.0 % (k=2)

SAR averaged over 10 cm³ (10 g) of Body TSL	condition	
SAR measured	250 mW input power	6.01 W/kg
SAR for nominal Body TSL parameters	normalized to 1W	23.8 W/kg ± 16.5 % (k=2)

Appendix (Additional assessments outside the scope of SCS 0108)

Antenna Parameters with Head TSL

Impedance, transformed to feed point	55.6 Ω + 4.1 j Ω
Return Loss	- 23.7 dB

Antenna Parameters with Body TSL

Impedance, transformed to feed point	49.4 Ω + 7.3 j Ω
Return Loss	- 22.7 dB

General Antenna Parameters and Design

Electrical Delay (one direction)	1.162 ns
----------------------------------	----------

After long term use with 100W radiated power, only a slight warming of the dipole near the feedpoint can be measured.

The dipole is made of standard semirigid coaxial cable. The center conductor of the feeding line is directly connected to the second arm of the dipole. The antenna is therefore short-circuited for DC-signals. On some of the dipoles, small end caps are added to the dipole arms in order to improve matching when loaded according to the position as explained in the "Measurement Conditions" paragraph. The SAR data are not affected by this change. The overall dipole length is still according to the Standard.

No excessive force must be applied to the dipole arms, because they might bend or the soldered connections near the feedpoint may be damaged.

Additional EUT Data

Manufactured by	SPEAG
Manufactured on	August 26, 2003

DASY5 Validation Report for Head TSL

Date: 23.08.2018

Test Laboratory: SPEAG, Zurich, Switzerland

DUT: Dipole 2450 MHz; Type: D2450V2; Serial: D2450V2 - SN:737

Communication System: UID 0 - CW; Frequency: 2450 MHz

Medium parameters used: $f = 2450$ MHz; $\sigma = 1.86$ S/m; $\epsilon_r = 37.7$; $\rho = 1000$ kg/m³

Phantom section: Flat Section

Measurement Standard: DASY5 (IEEE/IEC/ANSI C63.19-2011)

DASY52 Configuration:

- Probe: EX3DV4 - SN7349; ConvF(7.88, 7.88, 7.88) @ 2450 MHz; Calibrated: 30.12.2017
- Sensor-Surface: 1.4mm (Mechanical Surface Detection)
- Electronics: DAE4 Sn601; Calibrated: 26.10.2017
- Phantom: Flat Phantom 5.0 (front); Type: QD 000 P50 AA; Serial: 1001
- DASY52 52.10.1(1476); SEMCAD X 14.6.11(7439)

Dipole Calibration for Head Tissue/Pin=250 mW, d=10mm/Zoom Scan (7x7x7)/Cube 0:

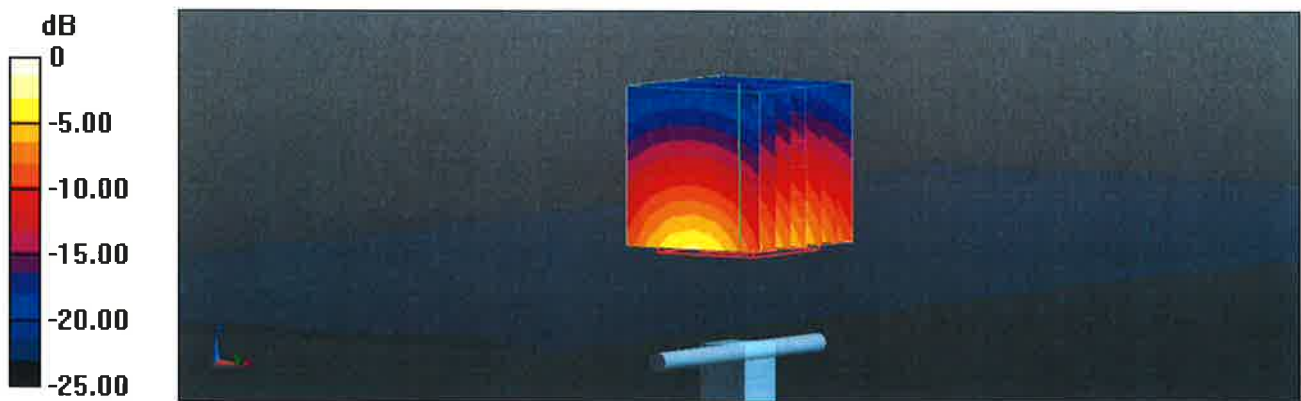
Measurement grid: dx=5mm, dy=5mm, dz=5mm

Reference Value = 115.2 V/m; Power Drift = -0.05 dB

Peak SAR (extrapolated) = 26.1 W/kg

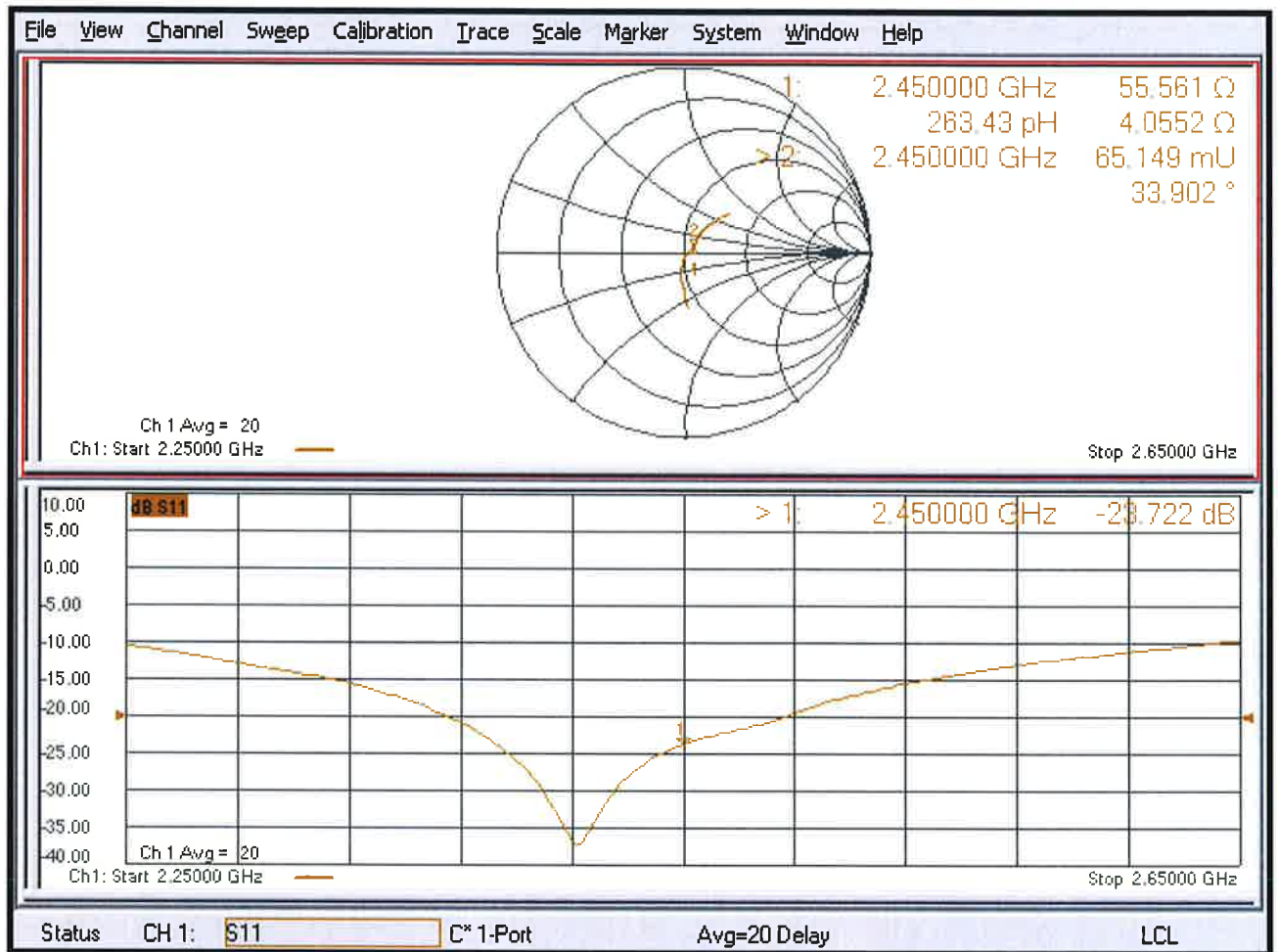
SAR(1 g) = 13.2 W/kg; SAR(10 g) = 6.13 W/kg

Maximum value of SAR (measured) = 21.7 W/kg



0 dB = 21.7 W/kg = 13.36 dBW/kg

Impedance Measurement Plot for Head TSL



DASY5 Validation Report for Body TSL

Date: 24.08.2018

Test Laboratory: SPEAG, Zurich, Switzerland

DUT: Dipole 2450 MHz; Type: D2450V2; Serial: D2450V2 - SN:737

Communication System: UID 0 - CW; Frequency: 2450 MHz

Medium parameters used: $f = 2450$ MHz; $\sigma = 2.02$ S/m; $\epsilon_r = 51.8$; $\rho = 1000$ kg/m³

Phantom section: Flat Section

Measurement Standard: DASY5 (IEEE/IEC/ANSI C63.19-2011)

DASY52 Configuration:

- Probe: EX3DV4 - SN7349; ConvF(8.01, 8.01, 8.01) @ 2450 MHz; Calibrated: 30.12.2017
- Sensor-Surface: 1.4mm (Mechanical Surface Detection)
- Electronics: DAE4 Sn601; Calibrated: 26.10.2017
- Phantom: Flat Phantom 5.0 (back); Type: QD 000 P50 AA; Serial: 1002
- DASY52 52.10.1(1476); SEMCAD X 14.6.11(7439)

Dipole Calibration for Body Tissue/Pin=250 mW, d=10mm/Zoom Scan (7x7x7)/Cube 0:

Measurement grid: dx=5mm, dy=5mm, dz=5mm

Reference Value = 107.8 V/m; Power Drift = -0.01 dB

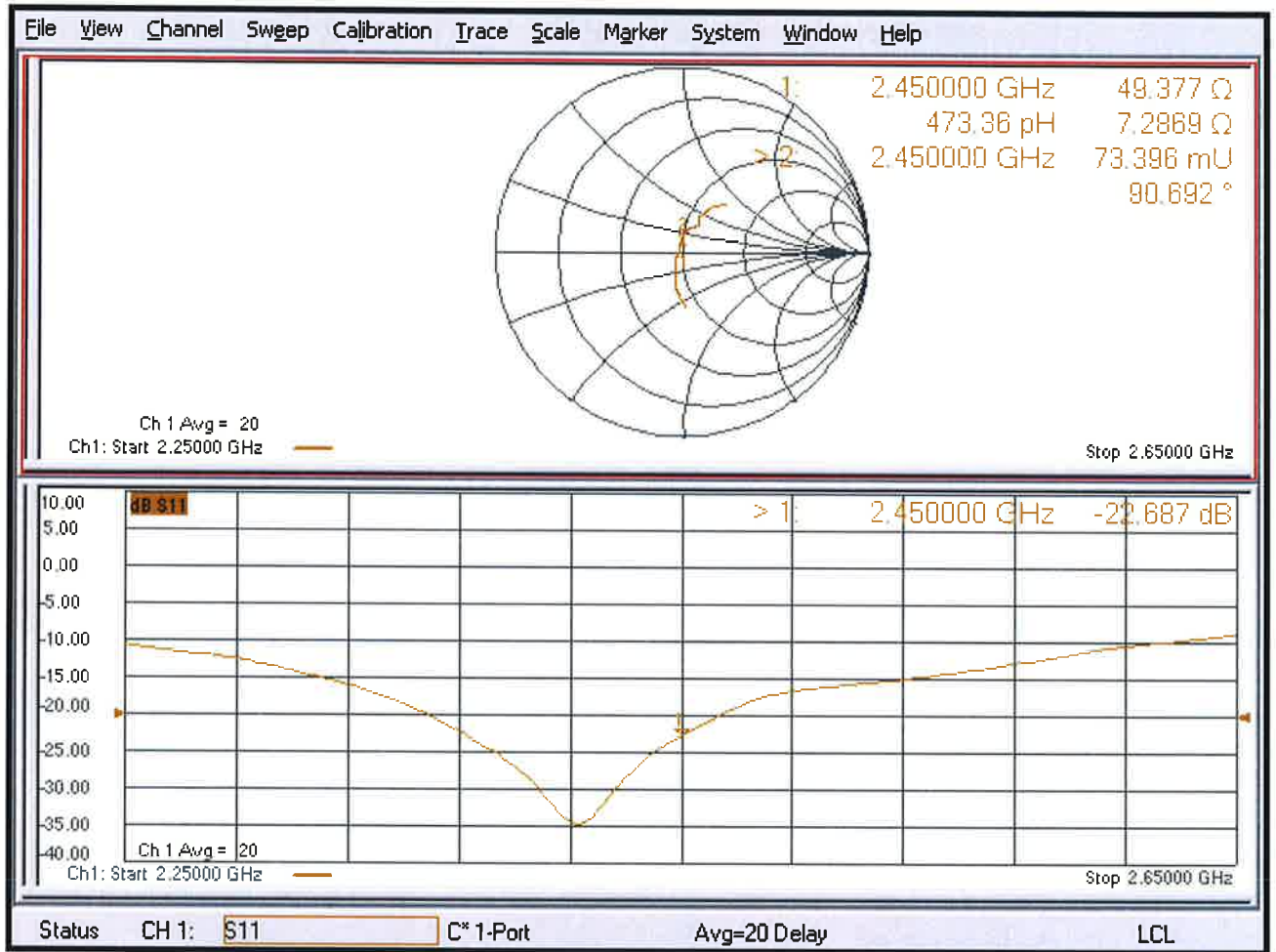
Peak SAR (extrapolated) = 25.5 W/kg

SAR(1 g) = 12.9 W/kg; SAR(10 g) = 6.01 W/kg

Maximum value of SAR (measured) = 20.9 W/kg



Impedance Measurement Plot for Body TSL





Accredited by the Swiss Accreditation Service (SAS)
The Swiss Accreditation Service is one of the signatories to the EA
Multilateral Agreement for the recognition of calibration certificates

Accreditation No.: **SCS 0108**

Client **B.V. ADT (Auden)**

Certificate No: **D5GHzV2-1019_Mar19**

CALIBRATION CERTIFICATE

Object **D5GHzV2 - SN:1019**

Calibration procedure(s) **QA CAL-22.v4
Calibration Procedure for SAR Validation Sources between 3-6 GHz**

Calibration date: **March 21, 2019**

This calibration certificate documents the traceability to national standards, which realize the physical units of measurements (SI).
The measurements and the uncertainties with confidence probability are given on the following pages and are part of the certificate.

All calibrations have been conducted in the closed laboratory facility: environment temperature (22 ± 3)°C and humidity < 70%.

Calibration Equipment used (M&TE critical for calibration)

Primary Standards	ID #	Cal Date (Certificate No.)	Scheduled Calibration
Power meter NRP	SN: 104778	04-Apr-18 (No. 217-02672/02673)	Apr-19
Power sensor NRP-Z91	SN: 103244	04-Apr-18 (No. 217-02672)	Apr-19
Power sensor NRP-Z91	SN: 103245	04-Apr-18 (No. 217-02673)	Apr-19
Reference 20 dB Attenuator	SN: 5058 (20k)	04-Apr-18 (No. 217-02682)	Apr-19
Type-N mismatch combination	SN: 5047.2 / 06327	04-Apr-18 (No. 217-02683)	Apr-19
Reference Probe EX3DV4	SN: 3503	31-Dec-18 (No. EX3-3503_Dec18)	Dec-19
DAE4	SN: 601	04-Oct-18 (No. DAE4-601_Oct18)	Oct-19
Secondary Standards	ID #	Check Date (in house)	Scheduled Check
Power meter E4419B	SN: GB41293874	06-Apr-16 (in house check Jun-18)	In house check: Jun-20
Power sensor HP 8481A	SN: US37292783	07-Oct-15 (in house check Oct-18)	In house check: Oct-20
Power sensor HP 8481A	SN: MY41092317	07-Oct-15 (in house check Oct-18)	In house check: Oct-20
RF generator R&S SMT-06	SN: 100972	15-Jun-15 (in house check Oct-18)	In house check: Oct-20
Network Analyzer Agilent E8358A	SN: US41080477	31-Mar-14 (in house check Oct-18)	In house check: Oct-19

Calibrated by: **Jeton Kastrati** Function: **Laboratory Technician** Signature:

Approved by: **Katja Pokovic** Technical Manager

Issued: March 25, 2019

This calibration certificate shall not be reproduced except in full without written approval of the laboratory.



Accredited by the Swiss Accreditation Service (SAS)

The Swiss Accreditation Service is one of the signatories to the EA
Multilateral Agreement for the recognition of calibration certificates

Accreditation No.: **SCS 0108**

Glossary:

TSL	tissue simulating liquid
ConvF	sensitivity in TSL / NORM x,y,z
N/A	not applicable or not measured

Calibration is Performed According to the Following Standards:

- IEEE Std 1528-2013, "IEEE Recommended Practice for Determining the Peak Spatial-Averaged Specific Absorption Rate (SAR) in the Human Head from Wireless Communications Devices: Measurement Techniques", June 2013
- IEC 62209-1, "Measurement procedure for the assessment of Specific Absorption Rate (SAR) from hand-held and body-mounted devices used next to the ear (frequency range of 300 MHz to 6 GHz)", July 2016
- IEC 62209-2, "Procedure to determine the Specific Absorption Rate (SAR) for wireless communication devices used in close proximity to the human body (frequency range of 30 MHz to 6 GHz)", March 2010
- KDB 865664, "SAR Measurement Requirements for 100 MHz to 6 GHz"

Additional Documentation:

- DASY4/5 System Handbook

Methods Applied and Interpretation of Parameters:

- Measurement Conditions:** Further details are available from the Validation Report at the end of the certificate. All figures stated in the certificate are valid at the frequency indicated.
- Antenna Parameters with TSL:** The dipole is mounted with the spacer to position its feed point exactly below the center marking of the flat phantom section, with the arms oriented parallel to the body axis.
- Feed Point Impedance and Return Loss:** These parameters are measured with the dipole positioned under the liquid filled phantom. The impedance stated is transformed from the measurement at the SMA connector to the feed point. The Return Loss ensures low reflected power. No uncertainty required.
- Electrical Delay:** One-way delay between the SMA connector and the antenna feed point. No uncertainty required.
- SAR measured:** SAR measured at the stated antenna input power.
- SAR normalized:** SAR as measured, normalized to an input power of 1 W at the antenna connector.
- SAR for nominal TSL parameters:** The measured TSL parameters are used to calculate the nominal SAR result.

The reported uncertainty of measurement is stated as the standard uncertainty of measurement multiplied by the coverage factor $k=2$, which for a normal distribution corresponds to a coverage probability of approximately 95%.

Head TSL parameters at 5600 MHz

The following parameters and calculations were applied.

	Temperature	Permittivity	Conductivity
Nominal Head TSL parameters	22.0 °C	35.5	5.07 mho/m
Measured Head TSL parameters	(22.0 ± 0.2) °C	34.7 ± 6 %	4.85 mho/m ± 6 %
Head TSL temperature change during test	< 0.5 °C	----	----

SAR result with Head TSL at 5600 MHz

SAR averaged over 1 cm ³ (1 g) of Head TSL	Condition	
SAR measured	100 mW input power	8.64 W/kg
SAR for nominal Head TSL parameters	normalized to 1W	85.8 W/kg ± 19.9 % (k=2)

SAR averaged over 10 cm ³ (10 g) of Head TSL	condition	
SAR measured	100 mW input power	2.47 W/kg
SAR for nominal Head TSL parameters	normalized to 1W	24.5 W/kg ± 19.5 % (k=2)

Head TSL parameters at 5750 MHz

The following parameters and calculations were applied.

	Temperature	Permittivity	Conductivity
Nominal Head TSL parameters	22.0 °C	35.4	5.22 mho/m
Measured Head TSL parameters	(22.0 ± 0.2) °C	34.5 ± 6 %	5.00 mho/m ± 6 %
Head TSL temperature change during test	< 0.5 °C	----	----

SAR result with Head TSL at 5750 MHz

SAR averaged over 1 cm ³ (1 g) of Head TSL	Condition	
SAR measured	100 mW input power	8.21 W/kg
SAR for nominal Head TSL parameters	normalized to 1W	81.5 W/kg ± 19.9 % (k=2)

SAR averaged over 10 cm ³ (10 g) of Head TSL	condition	
SAR measured	100 mW input power	2.34 W/kg
SAR for nominal Head TSL parameters	normalized to 1W	23.2 W/kg ± 19.5 % (k=2)

Measurement Conditions

DASY system configuration, as far as not given on page 1.

DASY Version	DASY5	V52.10.2
Extrapolation	Advanced Extrapolation	
Phantom	Modular Flat Phantom V5.0	
Distance Dipole Center - TSL	10 mm	with Spacer
Zoom Scan Resolution	dx, dy = 4.0 mm, dz = 1.4 mm	Graded Ratio = 1.4 (Z direction)
Frequency	5250 MHz ± 1 MHz 5600 MHz ± 1 MHz 5750 MHz ± 1 MHz	

Head TSL parameters at 5250 MHz

The following parameters and calculations were applied.

	Temperature	Permittivity	Conductivity
Nominal Head TSL parameters	22.0 °C	35.9	4.71 mho/m
Measured Head TSL parameters	(22.0 ± 0.2) °C	35.2 ± 6 %	4.50 mho/m ± 6 %
Head TSL temperature change during test	< 0.5 °C	----	----

SAR result with Head TSL at 5250 MHz

SAR averaged over 1 cm³ (1 g) of Head TSL	Condition	
SAR measured	100 mW input power	8.12 W/kg
SAR for nominal Head TSL parameters	normalized to 1W	80.7 W/kg ± 19.9 % (k=2)

SAR averaged over 10 cm³ (10 g) of Head TSL	condition	
SAR measured	100 mW input power	2.34 W/kg
SAR for nominal Head TSL parameters	normalized to 1W	23.2 W/kg ± 19.5 % (k=2)

Body TSL parameters at 5250 MHz

The following parameters and calculations were applied.

	Temperature	Permittivity	Conductivity
Nominal Body TSL parameters	22.0 °C	48.9	5.36 mho/m
Measured Body TSL parameters	(22.0 ± 0.2) °C	46.8 ± 6 %	5.45 mho/m ± 6 %
Body TSL temperature change during test	< 0.5 °C	----	----

SAR result with Body TSL at 5250 MHz

SAR averaged over 1 cm ³ (1 g) of Body TSL	Condition	
SAR measured	100 mW input power	7.54 W/kg
SAR for nominal Body TSL parameters	normalized to 1W	74.8 W/kg ± 19.9 % (k=2)

SAR averaged over 10 cm ³ (10 g) of Body TSL	condition	
SAR measured	100 mW input power	2.11 W/kg
SAR for nominal Body TSL parameters	normalized to 1W	20.9 W/kg ± 19.5 % (k=2)

Body TSL parameters at 5600 MHz

The following parameters and calculations were applied.

	Temperature	Permittivity	Conductivity
Nominal Body TSL parameters	22.0 °C	48.5	5.77 mho/m
Measured Body TSL parameters	(22.0 ± 0.2) °C	46.2 ± 6 %	5.92 mho/m ± 6 %
Body TSL temperature change during test	< 0.5 °C	----	----

SAR result with Body TSL at 5600 MHz

SAR averaged over 1 cm ³ (1 g) of Body TSL	Condition	
SAR measured	100 mW input power	7.80 W/kg
SAR for nominal Body TSL parameters	normalized to 1W	77.3 W/kg ± 19.9 % (k=2)

SAR averaged over 10 cm ³ (10 g) of Body TSL	condition	
SAR measured	100 mW input power	2.18 W/kg
SAR for nominal Body TSL parameters	normalized to 1W	21.5 W/kg ± 19.5 % (k=2)

Body TSL parameters at 5750 MHz

The following parameters and calculations were applied.

	Temperature	Permittivity	Conductivity
Nominal Body TSL parameters	22.0 °C	48.3	5.94 mho/m
Measured Body TSL parameters	(22.0 ± 0.2) °C	46.0 ± 6 %	6.13 mho/m ± 6 %
Body TSL temperature change during test	< 0.5 °C	----	----

SAR result with Body TSL at 5750 MHz

SAR averaged over 1 cm³ (1 g) of Body TSL	Condition	
SAR measured	100 mW input power	7.62 W/kg
SAR for nominal Body TSL parameters	normalized to 1W	75.5 W/kg ± 19.9 % (k=2)

SAR averaged over 10 cm³ (10 g) of Body TSL	condition	
SAR measured	100 mW input power	2.12 W/kg
SAR for nominal Body TSL parameters	normalized to 1W	21.0 W/kg ± 19.5 % (k=2)

Appendix (Additional assessments outside the scope of SCS 0108)

Antenna Parameters with Head TSL at 5250 MHz

Impedance, transformed to feed point	52.3 Ω - 5.8 j Ω
Return Loss	- 24.3 dB

Antenna Parameters with Head TSL at 5600 MHz

Impedance, transformed to feed point	56.8 Ω - 1.1 j Ω
Return Loss	- 23.8 dB

Antenna Parameters with Head TSL at 5750 MHz

Impedance, transformed to feed point	58.3 Ω + 3.2 j Ω
Return Loss	- 21.7 dB

Antenna Parameters with Body TSL at 5250 MHz

Impedance, transformed to feed point	52.5 Ω - 3.7 j Ω
Return Loss	- 27.3 dB

Antenna Parameters with Body TSL at 5600 MHz

Impedance, transformed to feed point	58.1 Ω - 1.2 j Ω
Return Loss	- 22.4 dB

Antenna Parameters with Body TSL at 5750 MHz

Impedance, transformed to feed point	58.7 Ω + 4.8 j Ω
Return Loss	- 20.8 dB

General Antenna Parameters and Design

Electrical Delay (one direction)	1.204 ns
----------------------------------	----------

After long term use with 100W radiated power, only a slight warming of the dipole near the feedpoint can be measured.

The dipole is made of standard semirigid coaxial cable. The center conductor of the feeding line is directly connected to the second arm of the dipole. The antenna is therefore short-circuited for DC-signals. On some of the dipoles, small end caps are added to the dipole arms in order to improve matching when loaded according to the position as explained in the "Measurement Conditions" paragraph. The SAR data are not affected by this change. The overall dipole length is still according to the Standard.

No excessive force must be applied to the dipole arms, because they might bend or the soldered connections near the feedpoint may be damaged.

Additional EUT Data

Manufactured by	SPEAG
-----------------	-------

DASY5 Validation Report for Head TSL

Date: 21.03.2019

Test Laboratory: SPEAG, Zurich, Switzerland

DUT: Dipole D5GHzV2; Type: D5GHzV2; Serial: D5GHzV2 - SN:1019

Communication System: UID 0 - CW; Frequency: 5250 MHz, Frequency: 5600 MHz, Frequency: 5750 MHz

Medium parameters used: $f = 5250$ MHz; $\sigma = 4.5$ S/m; $\epsilon_r = 35.2$; $\rho = 1000$ kg/m³,

Medium parameters used: $f = 5600$ MHz; $\sigma = 4.85$ S/m; $\epsilon_r = 34.7$; $\rho = 1000$ kg/m³,

Medium parameters used: $f = 5750$ MHz; $\sigma = 5$ S/m; $\epsilon_r = 34.5$; $\rho = 1000$ kg/m³

Phantom section: Flat Section

Measurement Standard: DASY5 (IEEE/IEC/ANSI C63.19-2011)

DASY52 Configuration:

- Probe: EX3DV4 - SN3503; ConvF(5.4, 5.4, 5.4) @ 5250 MHz, ConvF(4.95, 4.95, 4.95) @ 5600 MHz, ConvF(4.98, 4.98, 4.98) @ 5750 MHz; Calibrated: 31.12.2018
- Sensor-Surface: 1.4mm (Mechanical Surface Detection)
- Electronics: DAE4 Sn601; Calibrated: 04.10.2018
- Phantom: Flat Phantom 5.0 (front); Type: QD 000 P50 AA; Serial: 1001
- DASY52 52.10.2(1495); SEMCAD X 14.6.12(7450)

Dipole Calibration for Head Tissue/Pin=100mW, dist=10mm, f=5250 MHz/Zoom Scan, dist=1.4mm (8x8x7)/Cube 0: Measurement grid: dx=4mm, dy=4mm, dz=1.4mm

Reference Value = 78.16 V/m; Power Drift = 0.09 dB

Peak SAR (extrapolated) = 28.1 W/kg

SAR(1 g) = 8.12 W/kg; SAR(10 g) = 2.34 W/kg

Maximum value of SAR (measured) = 18.1 W/kg

Dipole Calibration for Head Tissue/Pin=100mW, dist=10mm, f=5600 MHz/Zoom Scan, dist=1.4mm (8x8x7)/Cube 0: Measurement grid: dx=4mm, dy=4mm, dz=1.4mm

Reference Value = 77.63 V/m; Power Drift = 0.06 dB

Peak SAR (extrapolated) = 32.2 W/kg

SAR(1 g) = 8.64 W/kg; SAR(10 g) = 2.47 W/kg

Maximum value of SAR (measured) = 19.7 W/kg

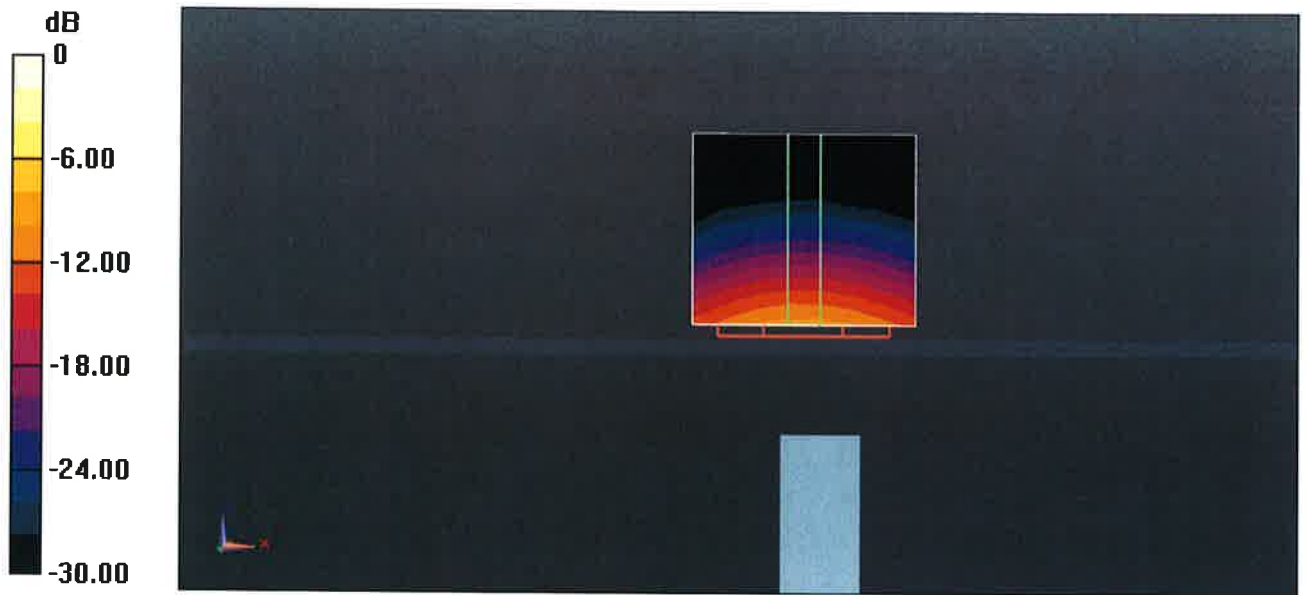
Dipole Calibration for Head Tissue/Pin=100mW, dist=10mm, f=5750 MHz/Zoom Scan, dist=1.4mm (8x8x7)/Cube 0: Measurement grid: dx=4mm, dy=4mm, dz=1.4mm

Reference Value = 74.85 V/m; Power Drift = 0.07 dB

Peak SAR (extrapolated) = 32.4 W/kg

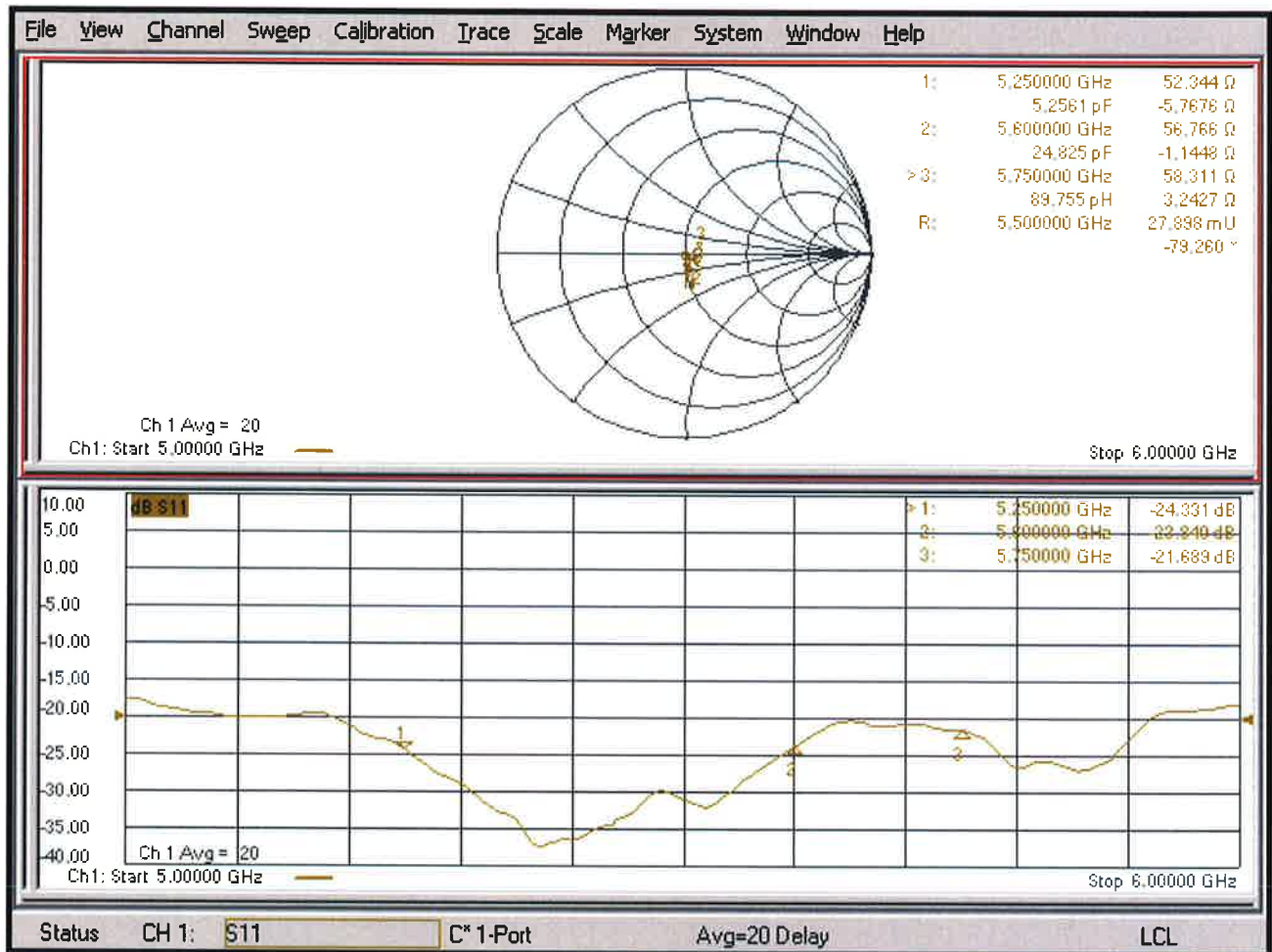
SAR(1 g) = 8.21 W/kg; SAR(10 g) = 2.34 W/kg

Maximum value of SAR (measured) = 19.1 W/kg



0 dB = 19.1 W/kg = 12.81 dBW/kg

Impedance Measurement Plot for Head TSL



DASY5 Validation Report for Body TSL

Date: 20.03.2019

Test Laboratory: SPEAG, Zurich, Switzerland

DUT: Dipole D5GHzV2; Type: D5GHzV2; Serial: D5GHzV2 - SN:1019

Communication System: UID 0 - CW; Frequency: 5250 MHz, Frequency: 5600 MHz, Frequency: 5750 MHz

Medium parameters used: $f = 5250$ MHz; $\sigma = 5.45$ S/m; $\epsilon_r = 46.8$; $\rho = 1000$ kg/m³,

Medium parameters used: $f = 5600$ MHz; $\sigma = 5.92$ S/m; $\epsilon_r = 46.2$; $\rho = 1000$ kg/m³,

Medium parameters used: $f = 5750$ MHz; $\sigma = 6.13$ S/m; $\epsilon_r = 46$; $\rho = 1000$ kg/m³

Phantom section: Flat Section

Measurement Standard: DASY5 (IEEE/IEC/ANSI C63.19-2011)

DASY52 Configuration:

- Probe: EX3DV4 - SN3503testing; ConvF(5.26, 5.26, 5.26) @ 5250 MHz, ConvF(4.7, 4.7, 4.7) @ 5600 MHz, ConvF(4.59, 4.59, 4.59) @ 5750 MHz; Calibrated: 31.12.2018
- Sensor-Surface: 1.4mm (Mechanical Surface Detection)
- Electronics: DAE4 Sn601; Calibrated: 04.10.2018
- Phantom: Flat Phantom 5.0 (back); Type: QD 000 P50 AA; Serial: 1002
- DASY52 52.10.2(1495); SEMCAD X 14.6.12(7450)

Dipole Calibration for Body Tissue/Pin=100mW, dist=10mm, f=5250 MHz/Zoom Scan,

dist=1.4mm (8x8x7)/Cube 0: Measurement grid: dx=4mm, dy=4mm, dz=1.4mm

Reference Value = 69.09 V/m; Power Drift = -0.05 dB

Peak SAR (extrapolated) = 29.2 W/kg

SAR(1 g) = 7.54 W/kg; SAR(10 g) = 2.11 W/kg

Maximum value of SAR (measured) = 17.2 W/kg

Dipole Calibration for Body Tissue/Pin=100mW, dist=10mm, f=5600 MHz/Zoom Scan,

dist=1.4mm (8x8x7)/Cube 0: Measurement grid: dx=4mm, dy=4mm, dz=1.4mm

Reference Value = 68.10 V/m; Power Drift = -0.00 dB

Peak SAR (extrapolated) = 33.4 W/kg

SAR(1 g) = 7.8 W/kg; SAR(10 g) = 2.18 W/kg

Maximum value of SAR (measured) = 18.5 W/kg

Dipole Calibration for Body Tissue/Pin=100mW, dist=10mm, f=5750 MHz/Zoom Scan,

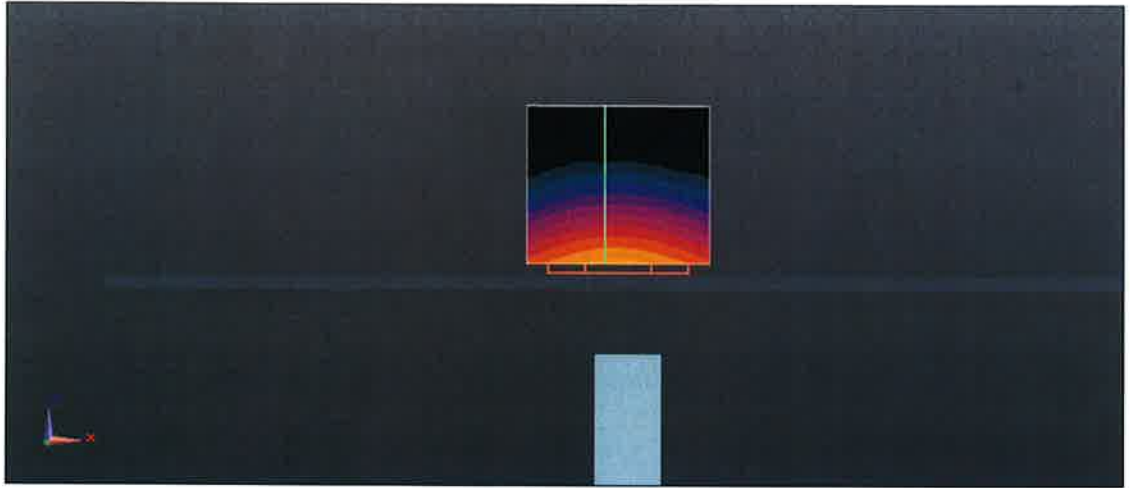
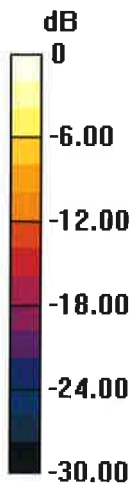
dist=1.4mm (8x8x7)/Cube 0: Measurement grid: dx=4mm, dy=4mm, dz=1.4mm

Reference Value = 66.59 V/m; Power Drift = 0.03 dB

Peak SAR (extrapolated) = 34.1 W/kg

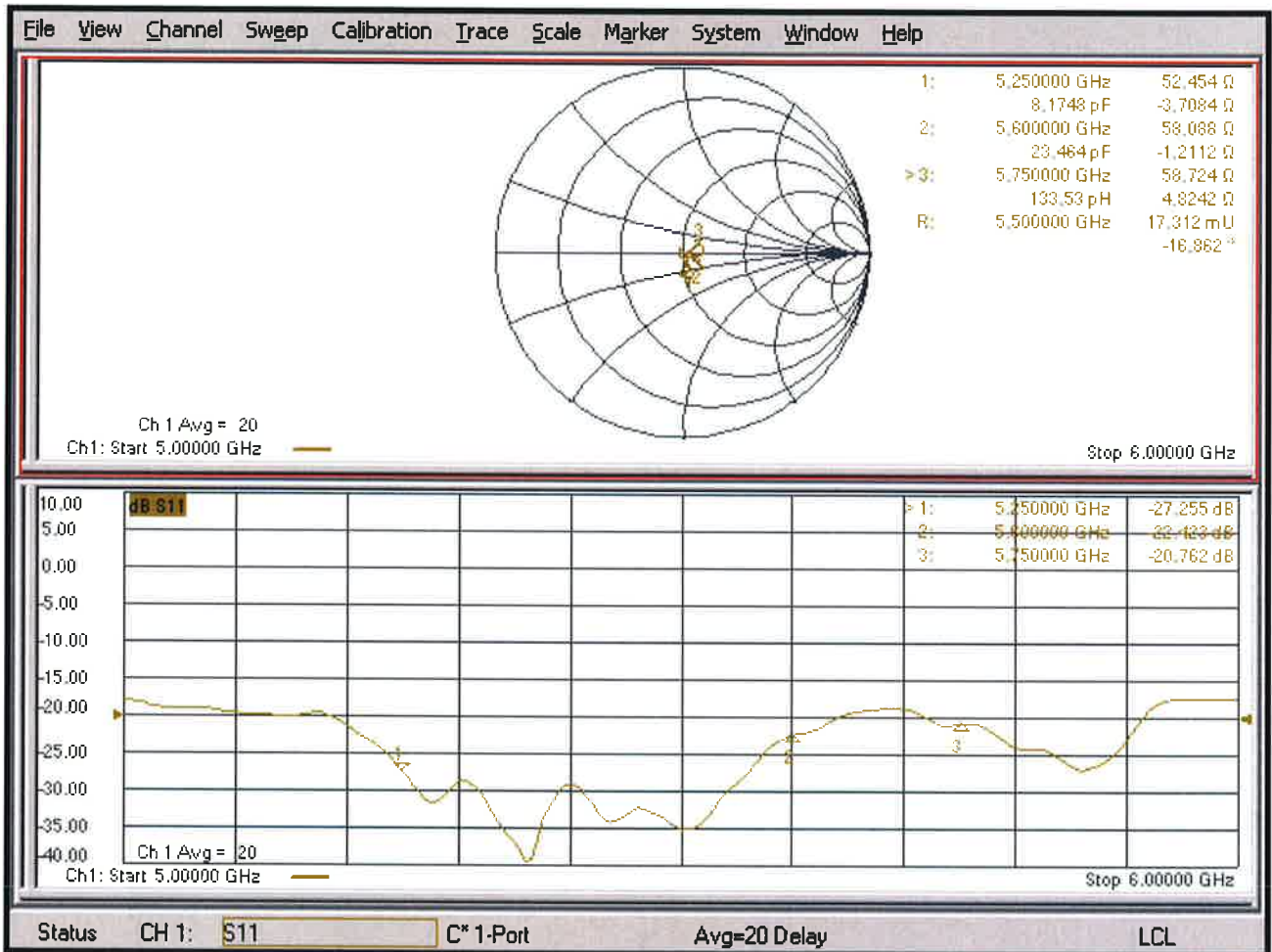
SAR(1 g) = 7.62 W/kg; SAR(10 g) = 2.12 W/kg

Maximum value of SAR (measured) = 18.3 W/kg



0 dB = 17.2 W/kg = 12.36 dBW/kg

Impedance Measurement Plot for Body TSL





Accredited by the Swiss Accreditation Service (SAS)
The Swiss Accreditation Service is one of the signatories to the EA
Multilateral Agreement for the recognition of calibration certificates

Accreditation No.: **SCS 0108**

Client **Auden**

Certificate No: **EX3-7375_Dec18**

CALIBRATION CERTIFICATE

Object **EX3DV4 - SN:7375**

Calibration procedure(s) **QA CAL-01.v9, QA CAL-14.v4, QA CAL-23.v5, QA CAL-25.v6
Calibration procedure for dosimetric E-field probes**

Calibration date: **December 13, 2018**

This calibration certificate documents the traceability to national standards, which realize the physical units of measurements (SI).
The measurements and the uncertainties with confidence probability are given on the following pages and are part of the certificate.

All calibrations have been conducted in the closed laboratory facility: environment temperature (22 ± 3)°C and humidity < 70%.

Calibration Equipment used (M&TE critical for calibration)

Primary Standards	ID	Cal Date (Certificate No.)	Scheduled Calibration
Power meter NRP	SN: 104778	04-Apr-18 (No. 217-02672/02673)	Apr-19
Power sensor NRP-Z91	SN: 103244	04-Apr-18 (No. 217-02672)	Apr-19
Power sensor NRP-Z91	SN: 103245	04-Apr-18 (No. 217-02673)	Apr-19
Reference 20 dB Attenuator	SN: S5277 (20x)	04-Apr-18 (No. 217-02682)	Apr-19
Reference Probe ES3DV2	SN: 3013	30-Dec-17 (No. ES3-3013_Dec17)	Dec-18
DAE4	SN: 660	21-Dec-17 (No. DAE4-660_Dec17)	Dec-18
Secondary Standards	ID	Check Date (in house)	Scheduled Check
Power meter E4419B	SN: GB41293874	06-Apr-16 (in house check Jun-18)	In house check: Jun-20
Power sensor E4412A	SN: MY41498087	06-Apr-16 (in house check Jun-18)	In house check: Jun-20
Power sensor E4412A	SN: 000110210	06-Apr-16 (in house check Jun-18)	In house check: Jun-20
RF generator HP 8648C	SN: US3642U01700	04-Aug-99 (in house check Jun-18)	In house check: Jun-20
Network Analyzer E8358A	SN: US41080477	31-Mar-14 (in house check Oct-18)	In house check: Oct-19

Calibrated by:	Name Claudio Leubler	Function Laboratory Technician	Signature
Approved by:	Katja Pokovic	Technical Manager	

Issued: December 15, 2018

This calibration certificate shall not be reproduced except in full without written approval of the laboratory.



Accredited by the Swiss Accreditation Service (SAS)

Accreditation No.: **SCS 0108**

The Swiss Accreditation Service is one of the signatories to the EA
 Multilateral Agreement for the recognition of calibration certificates

Glossary:

TSL	tissue simulating liquid
NORM _{x,y,z}	sensitivity in free space
ConvF	sensitivity in TSL / NORM _{x,y,z}
DCP	diode compression point
CF	crest factor (1/duty_cycle) of the RF signal
A, B, C, D	modulation dependent linearization parameters
Polarization φ	φ rotation around probe axis
Polarization ϑ	ϑ rotation around an axis that is in the plane normal to probe axis (at measurement center), i.e., $\vartheta = 0$ is normal to probe axis
Connector Angle	information used in DASY system to align probe sensor X to the robot coordinate system

Calibration is Performed According to the Following Standards:

- a) IEEE Std 1528-2013, "IEEE Recommended Practice for Determining the Peak Spatial-Averaged Specific Absorption Rate (SAR) in the Human Head from Wireless Communications Devices: Measurement Techniques", June 2013
- b) IEC 62209-1, "Measurement procedure for the assessment of Specific Absorption Rate (SAR) from hand-held and body-mounted devices used next to the ear (frequency range of 300 MHz to 6 GHz)", July 2016
- c) IEC 62209-2, "Procedure to determine the Specific Absorption Rate (SAR) for wireless communication devices used in close proximity to the human body (frequency range of 30 MHz to 6 GHz)", March 2010
- d) KDB 865664, "SAR Measurement Requirements for 100 MHz to 6 GHz"

Methods Applied and Interpretation of Parameters:

- *NORM_{x,y,z}*: Assessed for E-field polarization $\vartheta = 0$ ($f \leq 900$ MHz in TEM-cell; $f > 1800$ MHz: R22 waveguide). *NORM_{x,y,z}* are only intermediate values, i.e., the uncertainties of *NORM_{x,y,z}* does not affect the E^2 -field uncertainty inside TSL (see below *ConvF*).
- *NORM(f)_{x,y,z}* = *NORM_{x,y,z}* * *frequency_response* (see Frequency Response Chart). This linearization is implemented in DASY4 software versions later than 4.2. The uncertainty of the frequency response is included in the stated uncertainty of *ConvF*.
- *DCP_{x,y,z}*: DCP are numerical linearization parameters assessed based on the data of power sweep with CW signal (no uncertainty required). DCP does not depend on frequency nor media.
- *PAR*: PAR is the Peak to Average Ratio that is not calibrated but determined based on the signal characteristics
- *A_{x,y,z}; B_{x,y,z}; C_{x,y,z}; D_{x,y,z}; VR_{x,y,z}*: *A, B, C, D* are numerical linearization parameters assessed based on the data of power sweep for specific modulation signal. The parameters do not depend on frequency nor media. *VR* is the maximum calibration range expressed in RMS voltage across the diode.
- *ConvF and Boundary Effect Parameters*: Assessed in flat phantom using E-field (or Temperature Transfer Standard for $f \leq 800$ MHz) and inside waveguide using analytical field distributions based on power measurements for $f > 800$ MHz. The same setups are used for assessment of the parameters applied for boundary compensation (alpha, depth) of which typical uncertainty values are given. These parameters are used in DASY4 software to improve probe accuracy close to the boundary. The sensitivity in TSL corresponds to *NORM_{x,y,z}* * *ConvF* whereby the uncertainty corresponds to that given for *ConvF*. A frequency dependent *ConvF* is used in DASY version 4.4 and higher which allows extending the validity from ± 50 MHz to ± 100 MHz.
- *Spherical isotropy (3D deviation from isotropy)*: in a field of low gradients realized using a flat phantom exposed by a patch antenna.
- *Sensor Offset*: The sensor offset corresponds to the offset of virtual measurement center from the probe tip (on probe axis). No tolerance required.
- *Connector Angle*: The angle is assessed using the information gained by determining the *NORM_x* (no uncertainty required).