

FCC SAR Test Report

Report No. : SA190326C25
Applicant : HP Inc.
Address : 3390 East Harmony Road Fort Collins Colorado 80528 United States
Product : Intel Wireless –AX200
FCC ID : B94-AX200D2LP
Brand : Intel® Wi-Fi 6 AX200
Model No. : AX200D2WL
Standards : FCC 47 CFR Part 2 (2.1093), IEEE C95.1:1992, IEEE Std 1528:2013
 KDB 865664 D01 v01r04, KDB 865664 D02 v01r02, KDB 248227 D01 v02r02,
 KDB 447498 D01 v06, KDB 616217 D04 v01r02
Sample Received Date : Mar. 06, 2019
Date of Testing : Mar. 31, 2019 ~ Apr. 18, 2019
Lab Address : No. 47-2, 14th Ling, Chia Pau Vil., Lin Kou Dist., New Taipei City, Taiwan, R.O.C.
Test Location : No. 19, Hwa Ya 2nd Rd, Wen Hwa Vil, Kwei Shan Dist., Taoyuan City 33383, Taiwan (R.O.C)

CERTIFICATION: The above equipment have been tested by **Bureau Veritas Consumer Products Services (H.K.) Ltd., Taoyuan Branch – Lin Kou Laboratories**, and found compliance with the requirement of the above standards. The test record, data evaluation & Equipment Under Test (EUT) configurations represented herein are true and accurate accounts of the measurements of the sample’s SAR characteristics under the conditions specified in this report. It should not be reproduced except in full, without the written approval of our laboratory. The client should not use it to claim product certification, approval, or endorsement by TAF or any government agencies.

Prepared By : 

 Rona Chen / Specialist

Approved By : 

 Gordon Lin / Assistant Manager



FCC Accredited No.: TW0003

This report is for your exclusive use. Any copying or replication of this report to or for any other person or entity, or use of our name or trademark, is permitted only with our prior written permission. This report sets forth our findings solely with respect to the test samples identified herein. The results set forth in this report are not indicative or representative of the quality or characteristics of the lot from which a test sample was taken or any similar or identical product unless specifically and expressly noted. Our report includes all of the tests requested by you and the results thereof based upon the information that you provided to us. You have 60 days from date of issuance of this report to notify us of any material error or omission caused by our negligence, provided, however, that such notice shall be in writing and shall specifically address the issue you wish to raise. A failure to raise such issue within the prescribed time shall constitute your unqualified acceptance of the completeness of this report, the tests conducted and the correctness of the report contents. Unless specifically mention, the uncertainty of measurement has been explicitly taken into account to declare the compliance or non-compliance to the specification.

Table of Contents

Release Control Record	3
1. Summary of Maximum SAR Value	4
2. Description of Equipment Under Test	5
3. SAR Measurement System	6
3.1 Definition of Specific Absorption Rate (SAR)	6
3.2 SPEAG DAS52 System	6
3.2.1 Robot	7
3.2.2 Probes	8
3.2.3 Data Acquisition Electronics (DAE)	8
3.2.4 Phantoms	9
3.2.5 Device Holder	10
3.2.6 System Validation Dipoles	10
3.2.7 Tissue Simulating Liquids	11
3.3 SAR System Verification	14
3.4 SAR Measurement Procedure	15
3.4.1 Area & Zoom Scan Procedure	15
3.4.2 Volume Scan Procedure	15
3.4.3 Power Drift Monitoring	16
3.4.4 Spatial Peak SAR Evaluation	16
3.4.5 SAR Averaged Methods	16
4. SAR Measurement Evaluation	17
4.1 EUT Configuration and Setting	17
4.2 EUT Testing Position	20
4.2.1 Body Exposure Conditions	20
4.2.2 SAR Test Exclusion Evaluations	22
4.3 Tissue Verification	24
4.4 System Validation	24
4.5 System Verification	25
4.6 Maximum Output Power	26
4.6.1 Maximum Target Conducted Power	26
4.6.2 Measured Conducted Power Result	36
4.7 SAR Testing Results	39
4.7.1 SAR Test Reduction Considerations	39
4.7.2 SAR Results for Body Exposure Condition (Test Separation Distance is 0 mm)	40
4.7.3 SAR Measurement Variability	43
4.7.4 Simultaneous Multi-band Transmission Evaluation	44
5. Calibration of Test Equipment	46
6. Measurement Uncertainty	47
7. Information of the Testing Laboratories	48
Appendix A. SAR Plots of System Verification	
Appendix B. SAR Plots of SAR Measurement	
Appendix C. Calibration Certificate for Probe and Dipole	
Appendix D. Photographs of EUT and Setup	

1. Summary of Maximum SAR Value

Equipment Class	Mode	Highest SAR-1g Body (W/kg)	
		Tablet Mode	Laptop Mode
DTS	2.4G WLAN	1.38	0.05
NII	5.3G WLAN	1.13	0.11
	5.6G WLAN	1.19	0.04
	5.8G WLAN	0.43	0.05
DSS	Bluetooth	0.21	0.00

Highest Simultaneous Transmission SAR	Body	
	Tablet Mode	Laptop Mode
	1.59	0.11

Note:

- The SAR criteria (**Head & Body: SAR-1g 1.6 W/kg, and Extremity: SAR-10g 4.0 W/kg**) for general population / uncontrolled exposure is specified in FCC 47 CFR part 2 (2.1093) and ANSI/IEEE C95.1-1992.

FCC SAR Test Report

2. Description of Equipment Under Test

EUT Type	Intel Wireless –AX200
FCC ID	B94-AX200D2LP
Brand Name	Intel® Wi-Fi 6 AX200
Model Name	AX200D2WL
Tx Frequency Bands (Unit: MHz)	WLAN : 2412 ~ 2472, 5180 ~ 5240, 5260 ~ 5320, 5500 ~ 5720, 5745 ~ 5825 Bluetooth : 2402 ~ 2480
Uplink Modulations	802.11b : DSSS 802.11a/g/n/ac/ax : OFDM Bluetooth : GFSK, π/4-DQPSK, 8-DPSK
Maximum Tune-up Conducted Power (Unit: dBm)	Please refer to section 4.6.1 of this report
Antenna Type	PIFA Antenna
EUT Stage	Engineering Sample

Note:

1. The EUT is authorized for use in specific End-product. Please refer to below for more details.

Product	Brand	Model
Tablet	HP	HSN-C04C

2. The antenna information is listed as below.

Antenna Type	Manufacturer	Parts Number	Antenna Gain			
			WLAN 2.4 GHz	WLAN 5.15~5.35 GHz	WLAN 5.47~5.725 GHz	WLAN 5.725~5.85 GHz
PIFA	INPAQ	Main Ant.:	Main: -0.95 Aux.: -0.91	Main: 0.34 Aux.: -0.39	Main: -1.36 Aux.: 0.61	Main: -1.79 Aux.: 0.58
		WA-P-LB-02-610 (DC330029D00) Aux Ant.:				
		WA-P-LB-02-611 (DC330029D10)				

3. The above EUT information is declared by manufacturer and for more detailed features description please refers to the manufacturer's specifications or User's Manual.

List of Accessory:

Battery	Brand Name	Dynapack
	Model Name	HSTNN-DB9E
	Rating	46.7 Wh
Keyboard 1	Brand Name	Primax
	Model Name	HSN-P01K
Keyboard 2	Brand Name	Cosmo
	Model Name	HSN-C01K

3. SAR Measurement System

3.1 Definition of Specific Absorption Rate (SAR)

SAR is related to the rate at which energy is absorbed per unit mass in an object exposed to a radio field. The SAR distribution in a biological body is complicated and is usually carried out by experimental techniques or numerical modeling. The standard recommends limits for two tiers of groups, occupational/controlled and general population/uncontrolled, based on a person's awareness and ability to exercise control over his or her exposure. In general, occupational/controlled exposure limits are higher than the limits for general population/uncontrolled.

The SAR definition is the time derivative (rate) of the incremental energy (dW) absorbed by (dissipated in) an incremental mass (dm) contained in a volume element (dv) of a given density (ρ). The equation description is as below:

$$\text{SAR} = \frac{d}{dt} \left(\frac{dW}{dm} \right) = \frac{d}{dt} \left(\frac{dW}{\rho dv} \right)$$

SAR is expressed in units of Watts per kilogram (W/kg)

SAR measurement can be related to the electrical field in the tissue by

$$\text{SAR} = \frac{\sigma |E|^2}{\rho}$$

Where: σ is the conductivity of the tissue, ρ is the mass density of the tissue and E is the RMS electrical field strength.

3.2 SPEAG DASY52 System

DASY52 system consists of high precision robot, probe alignment sensor, phantom, robot controller, controlled measurement server and near-field probe. The robot includes six axes that can move to the precision position of the DASY52 software defined. The DASY52 software can define the area that is detected by the probe. The robot is connected to controlled box. Controlled measurement server is connected to the controlled robot box. The DAE includes amplifier, signal multiplexing, AD converter, offset measurement and surface detection. It is connected to the Electro-optical coupler (ECO). The ECO performs the conversion form the optical into digital electric signal of the DAE and transfers data to the PC.

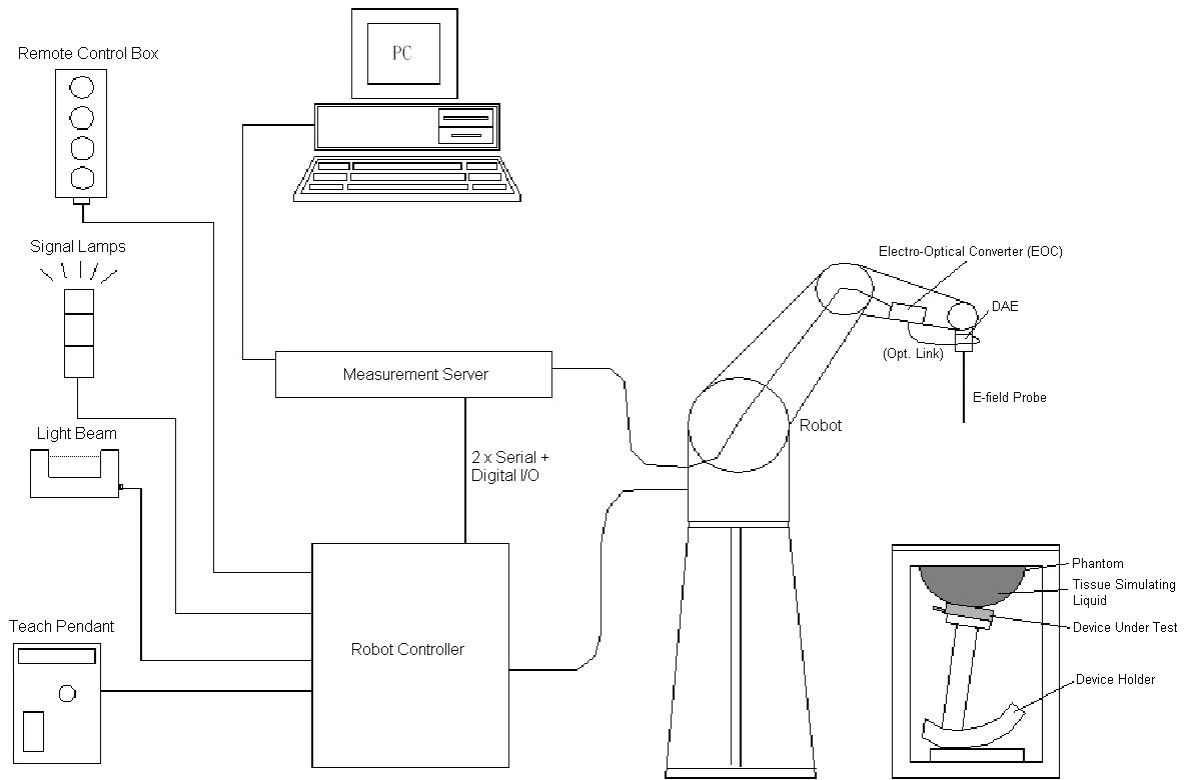


Fig-3.1 SPEAG DASY52 System Setup

3.2.1 Robot

The DASY52 systems use the high precision robots from Stäubli SA (France). For the 6-axis controller system, the robot controller version of CS8c from Stäubli is used. The Stäubli robot series have many features that are important for our application:

- High precision (repeatability ± 0.035 mm)
- High reliability (industrial design)
- Jerk-free straight movements
- Low ELF interference (the closed metallic construction shields against motor control fields)





Fig-3.2 SPEAG DASY52 System


FCC SAR Test Report

3.2.2 Probes


The SAR measurement is conducted with the dosimetric probe. The probe is specially designed and calibrated for use in liquid with high permittivity. The dosimetric probe has special calibration in liquid at different frequency.

Model	EX3DV4	
Construction	Symmetrical design with triangular core. Built-in shielding against static charges. PEEK enclosure material (resistant to organic solvents, e.g., DGBE).	
Frequency	10 MHz to 6 GHz Linearity: ± 0.2 dB	
Directivity	± 0.3 dB in HSL (rotation around probe axis) ± 0.5 dB in tissue material (rotation normal to probe axis)	
Dynamic Range	10 μ W/g to 100 mW/g Linearity: ± 0.2 dB (noise: typically < 1 μ W/g)	
Dimensions	Overall length: 337 mm (Tip: 20 mm) Tip diameter: 2.5 mm (Body: 12 mm) Typical distance from probe tip to dipole centers: 1 mm	


Model	ES3DV3	
Construction	Symmetrical design with triangular core. Interleaved sensors. Built-in shielding against static charges. PEEK enclosure material (resistant to organic solvents, e.g., DGBE).	
Frequency	10 MHz to 4 GHz Linearity: ± 0.2 dB	
Directivity	± 0.2 dB in HSL (rotation around probe axis) ± 0.3 dB in tissue material (rotation normal to probe axis)	
Dynamic Range	5 μ W/g to 100 mW/g Linearity: ± 0.2 dB	
Dimensions	Overall length: 337 mm (Tip: 20 mm) Tip diameter: 3.9 mm (Body: 12 mm) Distance from probe tip to dipole centers: 2.0 mm	


Model	ET3DV6	
Construction	Symmetrical design with triangular core Built-in optical fiber for surface detection system. Built-in shielding against static charges. PEEK enclosure material (resistant to organic solvents, e.g., DGBE)	
Frequency	10 MHz to 2.3 GHz; Linearity: ± 0.2 dB	
Directivity	± 0.2 dB in TSL (rotation around probe axis) ± 0.4 dB in TSL (rotation normal to probe axis)	
Dynamic Range	5 μ W/g to 100 mW/g; Linearity: ± 0.2 dB	
Dimensions	Overall length: 337 mm (Tip: 16 mm) Tip diameter: 6.8 mm (Body: 12 mm) Distance from probe tip to dipole centers: 2.7 mm	

3.2.3 Data Acquisition Electronics (DAE)

Model	DAE3, DAE4	
Construction	Signal amplifier, multiplexer, A/D converter and control logic. Serial optical link for communication with DASY embedded system (fully remote controlled). Two step probe touch detector for mechanical surface detection and emergency robot stop.	
Measurement Range	-100 to +300 mV (16 bit resolution and two range settings: 4mV, 400mV)	
Input Offset Voltage	$< 5\mu$ V (with auto zero)	
Input Bias Current	< 50 fA	
Dimensions	60 x 60 x 68 mm	


3.2.4 Phantoms


Model	Twin SAM	
Construction	The shell corresponds to the specifications of the Specific Anthropomorphic Mannequin (SAM) phantom defined in IEEE 1528 and IEC 62209-1. It enables the dosimetric evaluation of left and right hand phone usage as well as body mounted usage at the flat phantom region. A cover prevents evaporation of the liquid. Reference markings on the phantom allow the complete setup of all predefined phantom positions and measurement grids by teaching three points with the robot.	
Material	Vinylester, glass fiber reinforced (VE-GF)	
Shell Thickness	2 ± 0.2 mm (6 ± 0.2 mm at ear point)	
Dimensions	Length: 1000 mm Width: 500 mm Height: adjustable feet	
Filling Volume	approx. 25 liters	

Model	ELI	
Construction	Phantom for compliance testing of handheld and body-mounted wireless devices in the frequency range of 30 MHz to 6 GHz. ELI is fully compatible with the IEC 62209-2 standard and all known tissue simulating liquids. ELI has been optimized regarding its performance and can be integrated into our standard phantom tables. A cover prevents evaporation of the liquid. Reference markings on the phantom allow installation of the complete setup, including all predefined phantom positions and measurement grids, by teaching three points. The phantom is compatible with all SPEAG dosimetric probes and dipoles.	
Material	Vinylester, glass fiber reinforced (VE-GF)	
Shell Thickness	2.0 ± 0.2 mm (bottom plate)	
Dimensions	Major axis: 600 mm Minor axis: 400 mm	
Filling Volume	approx. 30 liters	


FCC SAR Test Report

3.2.5 Device Holder

Model	Mounting Device	
Construction	In combination with the Twin SAM Phantom or ELI4, the Mounting Device enables the rotation of the mounted transmitter device in spherical coordinates. Rotation point is the ear opening point. Transmitter devices can be easily and accurately positioned according to IEC, IEEE, FCC or other specifications. The device holder can be locked for positioning at different phantom sections (left head, right head, flat).	
Material	POM	

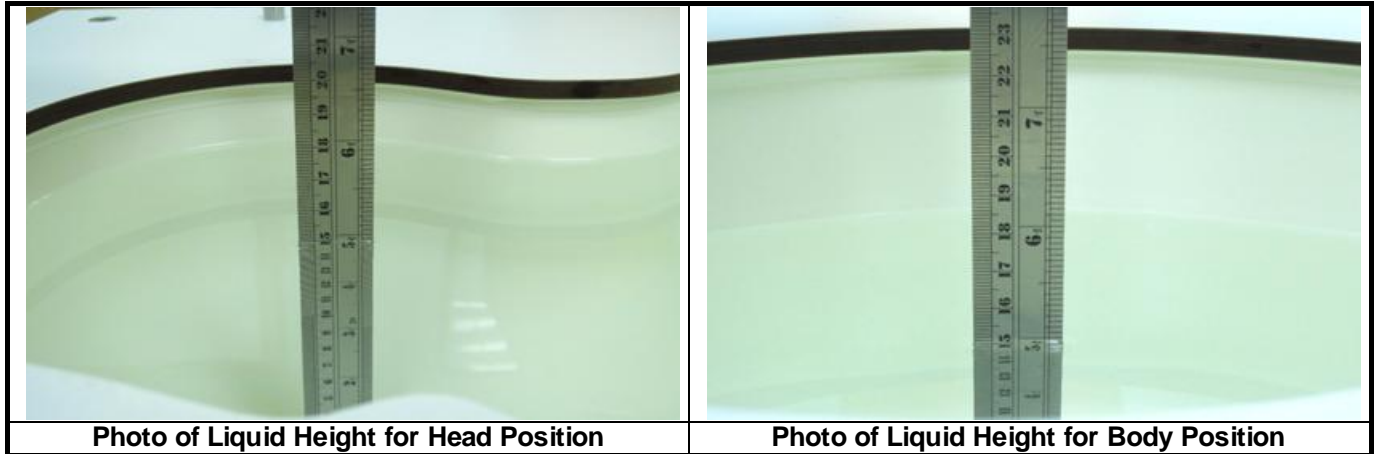
Model	Laptop Extensions Kit	
Construction	Simple but effective and easy-to-use extension for Mounting Device that facilitates the testing of larger devices according to IEC 62209-2 (e.g., laptops, cameras, etc.). It is lightweight and fits easily on the upper part of the Mounting Device in place of the phone positioner.	
Material	POM, Acrylic glass, Foam	

3.2.6 System Validation Dipoles

Model	D-Serial	
Construction	Symmetrical dipole with 1/4 balun. Enables measurement of feed point impedance with NWA. Matched for use near flat phantoms filled with tissue simulating solutions.	
Frequency	750 MHz to 5800 MHz	
Return Loss	> 20 dB	
Power Capability	> 100 W (f < 1GHz), > 40 W (f > 1GHz)	

3.2.7 Tissue Simulating Liquids

For SAR measurement of the field distribution inside the phantom, the phantom must be filled with homogeneous tissue simulating liquid to a depth of at least 15 cm. For head SAR testing, the liquid height from the ear reference point (ERP) of the phantom to the liquid top surface is larger than 15 cm. For body SAR testing, the liquid height from the center of the flat phantom to the liquid top surface is larger than 15 cm. The nominal dielectric values of the tissue simulating liquids in the phantom and the tolerance of 5% are listed in Table-3.1.



The dielectric properties of the head tissue simulating liquids are defined in IEEE 1528, and KDB 865664 D01 Appendix A. For the body tissue simulating liquids, the dielectric properties are defined in KDB 865664 D01 Appendix A. The dielectric properties of the tissue simulating liquids were verified prior to the SAR evaluation using a dielectric assessment kit and a network analyzer.

Table-3.1 Targets of Tissue Simulating Liquid

Frequency (MHz)	Target Permittivity	Range of $\pm 5\%$	Target Conductivity	Range of $\pm 5\%$
For Head				
750	41.9	39.8 ~ 44.0	0.89	0.85 ~ 0.93
835	41.5	39.4 ~ 43.6	0.90	0.86 ~ 0.95
900	41.5	39.4 ~ 43.6	0.97	0.92 ~ 1.02
1450	40.5	38.5 ~ 42.5	1.20	1.14 ~ 1.26
1640	40.3	38.3 ~ 42.3	1.29	1.23 ~ 1.35
1750	40.1	38.1 ~ 42.1	1.37	1.30 ~ 1.44
1800	40.0	38.0 ~ 42.0	1.40	1.33 ~ 1.47
1900	40.0	38.0 ~ 42.0	1.40	1.33 ~ 1.47
2000	40.0	38.0 ~ 42.0	1.40	1.33 ~ 1.47
2300	39.5	37.5 ~ 41.5	1.67	1.59 ~ 1.75
2450	39.2	37.2 ~ 41.2	1.80	1.71 ~ 1.89
2600	39.0	37.1 ~ 41.0	1.96	1.86 ~ 2.06
3500	37.9	36.0 ~ 39.8	2.91	2.76 ~ 3.06
5200	36.0	34.2 ~ 37.8	4.66	4.43 ~ 4.89
5300	35.9	34.1 ~ 37.7	4.76	4.52 ~ 5.00
5500	35.6	33.8 ~ 37.4	4.96	4.71 ~ 5.21
5600	35.5	33.7 ~ 37.3	5.07	4.82 ~ 5.32
5800	35.3	33.5 ~ 37.1	5.27	5.01 ~ 5.53
For Body				
750	55.5	52.7 ~ 58.3	0.96	0.91 ~ 1.01
835	55.2	52.4 ~ 58.0	0.97	0.92 ~ 1.02
900	55.0	52.3 ~ 57.8	1.05	1.00 ~ 1.10
1450	54.0	51.3 ~ 56.7	1.30	1.24 ~ 1.37
1640	53.8	51.1 ~ 56.5	1.40	1.33 ~ 1.47
1750	53.4	50.7 ~ 56.1	1.49	1.42 ~ 1.56
1800	53.3	50.6 ~ 56.0	1.52	1.44 ~ 1.60
1900	53.3	50.6 ~ 56.0	1.52	1.44 ~ 1.60
2000	53.3	50.6 ~ 56.0	1.52	1.44 ~ 1.60
2300	52.9	50.3 ~ 55.5	1.81	1.72 ~ 1.90
2450	52.7	50.1 ~ 55.3	1.95	1.85 ~ 2.05
2600	52.5	49.9 ~ 55.1	2.16	2.05 ~ 2.27
3500	51.3	48.7 ~ 53.9	3.31	3.14 ~ 3.48
5200	49.0	46.6 ~ 51.5	5.30	5.04 ~ 5.57
5300	48.9	46.5 ~ 51.3	5.42	5.15 ~ 5.69
5500	48.6	46.2 ~ 51.0	5.65	5.37 ~ 5.93
5600	48.5	46.1 ~ 50.9	5.77	5.48 ~ 6.06
5800	48.2	45.8 ~ 50.6	6.00	5.70 ~ 6.30

FCC SAR Test Report

The following table gives the recipes for tissue simulating liquids.

Table-3.2 Recipes of Tissue Simulating Liquid

Tissue Type	Bactericide	DGBE	HEC	NaCl	Sucrose	Triton X-100	Water	Diethylene Glycol Mono-hexylether
H750	0.2	-	0.2	1.5	56.0	-	42.1	-
H835	0.2	-	0.2	1.5	57.0	-	41.1	-
H900	0.2	-	0.2	1.4	58.0	-	40.2	-
H1450	-	43.3	-	0.6	-	-	56.1	-
H1640	-	45.8	-	0.5	-	-	53.7	-
H1750	-	47.0	-	0.4	-	-	52.6	-
H1800	-	44.5	-	0.3	-	-	55.2	-
H1900	-	44.5	-	0.2	-	-	55.3	-
H2000	-	44.5	-	0.1	-	-	55.4	-
H2300	-	44.9	-	0.1	-	-	55.0	-
H2450	-	45.0	-	0.1	-	-	54.9	-
H2600	-	45.1	-	0.1	-	-	54.8	-
H3500	-	8.0	-	0.2	-	20.0	71.8	-
H5G	-	-	-	-	-	17.2	65.5	17.3
B750	0.2	-	0.2	0.8	48.8	-	50.0	-
B835	0.2	-	0.2	0.9	48.5	-	50.2	-
B900	0.2	-	0.2	0.9	48.2	-	50.5	-
B1450	-	34.0	-	0.3	-	-	65.7	-
B1640	-	32.5	-	0.3	-	-	67.2	-
B1750	-	31.0	-	0.2	-	-	68.8	-
B1800	-	29.5	-	0.4	-	-	70.1	-
B1900	-	29.5	-	0.3	-	-	70.2	-
B2000	-	30.0	-	0.2	-	-	69.8	-
B2300	-	31.0	-	0.1	-	-	68.9	-
B2450	-	31.4	-	0.1	-	-	68.5	-
B2600	-	31.8	-	0.1	-	-	68.1	-
B3500	-	28.8	-	0.1	-	-	71.1	-
B5G	-	-	-	-	-	10.7	78.6	10.7

3.3 SAR System Verification

The system check verifies that the system operates within its specifications. It is performed daily or before every SAR measurement. The system check uses normal SAR measurements in the flat section of the phantom with a matched dipole at a specified distance. The system verification setup is shown as below.

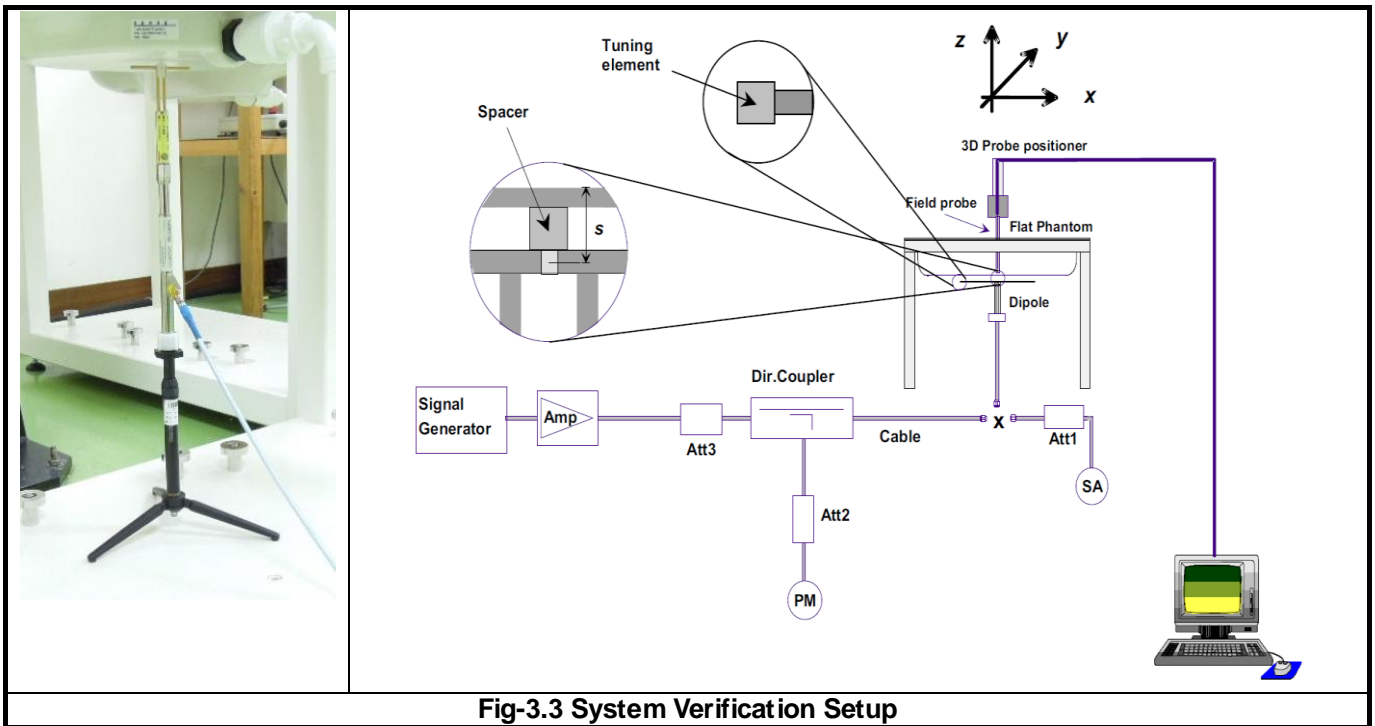


Fig-3.3 System Verification Setup

The validation dipole is placed beneath the flat phantom with the specific spacer in place. The distance spacer is touch the phantom surface with a light pressure at the reference marking and be oriented parallel to the long side of the phantom. The spectrum analyzer measures the forward power at the location of the system check dipole connector. The signal generator is adjusted for the desired forward power (250 mW is used for 700 MHz to 3 GHz, 100 mW is used for 3.5 GHz to 6 GHz) at the dipole connector and the power meter is read at that level. After connecting the cable to the dipole, the signal generator is readjusted for the same reading at power meter.

After system check testing, the SAR result will be normalized to 1W forward input power and compared with the reference SAR value derived from validation dipole certificate report. The deviation of system check should be within 10 %.

3.4 SAR Measurement Procedure

According to the SAR test standard, the recommended procedure for assessing the peak spatial-average SAR value consists of the following steps:

- (a) Power reference measurement
- (b) Area scan
- (c) Zoom scan
- (d) Power drift measurement

The SAR measurement procedures for each of test conditions are as follows:

- (a) Make EUT to transmit maximum output power
- (b) Measure conducted output power through RF cable
- (c) Place the EUT in the specific position of phantom
- (d) Perform SAR testing steps on the DASY system
- (e) Record the SAR value

3.4.1 Area & Zoom Scan Procedure

First Area Scan is used to locate the approximate location(s) of the local peak SAR value(s). The measurement grid within an Area Scan is defined by the grid extent, grid step size and grid offset. Next, in order to determine the EM field distribution in a three-dimensional spatial extension, Zoom Scan is required. The Zoom Scan is performed around the highest E-field value to determine the averaged SAR-distribution over 10 g. According to KDB 865664 D01, the resolution for Area and Zoom scan is specified in the table below.

Items	<= 2 GHz	2-3 GHz	3-4 GHz	4-5 GHz	5-6 GHz
Area Scan ($\Delta x, \Delta y$)	<= 15 mm	<= 12 mm	<= 12 mm	<= 10 mm	<= 10 mm
Zoom Scan ($\Delta x, \Delta y$)	<= 8 mm	<= 5 mm	<= 5 mm	<= 4 mm	<= 4 mm
Zoom Scan (Δz)	<= 5 mm	<= 5 mm	<= 4 mm	<= 3 mm	<= 2 mm
Zoom Scan Volume	>= 30 mm	>= 30 mm	>= 28 mm	>= 25 mm	>= 22 mm

Note:

When zoom scan is required and report SAR is <= 1.4 W/kg, the zoom scan resolution of $\Delta x / \Delta y$ (2-3GHz: <= 8 mm, 3-4GHz: <= 7 mm, 4-6GHz: <= 5 mm) may be applied.

3.4.2 Volume Scan Procedure

The volume scan is used for assess overlapping SAR distributions for antennas transmitting in different frequency bands. It is equivalent to an oversized zoom scan used in standalone measurements. The measurement volume will be used to enclose all the simultaneous transmitting antennas. For antennas transmitting simultaneously in different frequency bands, the volume scan is measured separately in each frequency band. In order to sum correctly to compute the 1g aggregate SAR, the EUT remain in the same test position for all measurements and all volume scan use the same spatial resolution and grid spacing. When all volume scan were completed, the software, SEMCAD postprocessor can combine and subsequently superpose these measurement data to calculating the multiband SAR.

3.4.3 Power Drift Monitoring

All SAR testing is under the EUT install full charged battery and transmit maximum output power. In DASYS measurement software, the power reference measurement and power drift measurement procedures are used for monitoring the power drift of EUT during SAR test. Both these procedures measure the field at a specified reference position before and after the SAR testing. The software will calculate the field difference in dB. If the power drift more than 5%, the SAR will be retested.

3.4.4 Spatial Peak SAR Evaluation

The procedure for spatial peak SAR evaluation has been implemented according to the test standard. It can be conducted for 1g and 10g, as well as for user-specific masses. The DASYS software includes all numerical procedures necessary to evaluate the spatial peak SAR value.

The base for the evaluation is a "cube" measurement. The measured volume must include the 1g and 10g cubes with the highest averaged SAR values. For that purpose, the center of the measured volume is aligned to the interpolated peak SAR value of a previously performed area scan.

The entire evaluation of the spatial peak values is performed within the post-processing engine (SEMCAD). The system always gives the maximum values for the 1g and 10g cubes. The algorithm to find the cube with highest averaged SAR is divided into the following stages:

- (a) Extraction of the measured data (grid and values) from the Zoom Scan
- (b) Calculation of the SAR value at every measurement point based on all stored data (A/D values and measurement parameters)
- (c) Generation of a high-resolution mesh within the measured volume
- (d) Interpolation of all measured values from the measurement grid to the high-resolution grid
- (e) Extrapolation of the entire 3-D field distribution to the phantom surface over the distance from sensor to surface
- (f) Calculation of the averaged SAR within masses of 1g and 10g

3.4.5 SAR Averaged Methods

In DASYS, the interpolation and extrapolation are both based on the modified Quadratic Shepard's method. The interpolation scheme combines a least-square fitted function method and a weighted average method which are the two basic types of computational interpolation and approximation.

Extrapolation routines are used to obtain SAR values between the lowest measurement points and the inner phantom surface. The extrapolation distance is determined by the surface detection distance and the probe sensor offset. The uncertainty increases with the extrapolation distance. To keep the uncertainty within 1% for the 1 g and 10 g cubes, the extrapolation distance should not be larger than 5 mm.

4. SAR Measurement Evaluation

4.1 EUT Configuration and Setting

<Considerations Related to WLAN for Setup and Testing>

In general, various vendor specific external test software and chipset based internal test modes are typically used for SAR measurement. These chipset based test mode utilities are generally hardware and manufacturer dependent, and often include substantial flexibility to reconfigure or reprogram a device. A Wi-Fi device must be configured to transmit continuously at the required data rate, channel bandwidth and signal modulation, using the highest transmission duty factor supported by the test mode tools for SAR measurement. The test frequencies established using test mode must correspond to the actual channel frequencies. When 802.11 frame gaps are accounted for in the transmission, a maximum transmission duty factor of 92 - 96% is typically achievable in most test mode configurations. A minimum transmission duty factor of 85% is required to avoid certain hardware and device implementation issues related to wide range SAR scaling. In addition, a periodic transmission duty factor is required for current generation SAR systems to measure SAR correctly. The reported SAR must be scaled to 100% transmission duty factor to determine compliance at the maximum tune-up tolerance limit.

According to KDB 248227 D01, this device has installed WLAN engineering testing software which can provide continuous transmitting RF signal. During WLAN SAR testing, this device was operated to transmit continuously at the maximum transmission duty with specified transmission mode, operating frequency, lowest data rate, and maximum output power.

Initial Test Configuration

An initial test configuration is determined for OFDM transmission modes in 2.4 GHz and 5 GHz bands according to the channel bandwidth, modulation and data rate combination(s) with the highest maximum output power specified for production units in each standalone and aggregated frequency band. When the same maximum power is specified for multiple transmission modes in a frequency band, the largest channel bandwidth, lowest order modulation, lowest data rate and lowest order 802.11a/g/n/ac mode is used for SAR measurement, on the highest measured output power channel in the initial test configuration, for each frequency band.

Subsequent Test Configuration

SAR measurement requirements for the remaining 802.11 transmission mode configurations that have not been tested in the initial test configuration are determined separately for each standalone and aggregated frequency band, in each exposure condition, according to the maximum output power specified for production units. Additional power measurements may be required to determine if SAR measurements are required for subsequent highest output power channels in a subsequent test configuration. When the highest reported SAR for the initial test configuration according to the initial test position or fixed exposure position requirements, is adjusted by the ratio of the subsequent test configuration to initial test configuration specified maximum output power and the adjusted SAR is ≤ 1.2 W/kg, SAR is not required for that subsequent test configuration.

SAR Test Configuration and Channel Selection

When multiple channel bandwidth configurations in a frequency band have the same specified maximum output power, the initial test configuration is using largest channel bandwidth, lowest order modulation, lowest data rate, and lowest order 802.11 mode (i.e., 802.11a is chosen over 802.11n then 802.11ac or 802.11g is chosen over 802.11n). After an initial test configuration is determined, if multiple test channels have the same measured maximum output power, the channel chosen for SAR measurement is determined according to the following.

- 1) The channel closest to mid-band frequency is selected for SAR measurement.
- 2) For channels with equal separation from mid-band frequency; for example, high and low channels or two mid-band channels, the higher frequency (number) channel is selected for SAR measurement.

Test Reduction for U-NII-1 (5.2 GHz) and U-NII-2A (5.3 GHz) Bands

For devices that operate in both U-NII bands using the same transmitter and antenna(s), SAR test reduction is determined according to the following.

- 1) When the same maximum output power is specified for both bands, begin SAR measurement in U-NII-2A band by applying the OFDM SAR requirements. If the highest reported SAR for a test configuration is ≤ 1.2 W/kg, SAR is not required for U-NII-1 band for that configuration (802.11 mode and exposure condition).
- 2) When different maximum output power is specified for the bands, begin SAR measurement in the band with higher specified maximum output power. The highest reported SAR for the tested configuration is adjusted by the ratio of lower to higher specified maximum output power for the two bands. When the adjusted SAR is ≤ 1.2 W/kg, SAR is not required for the band with lower maximum output power in that test configuration.

<Considerations Related to Bluetooth for Setup and Testing>

This device has installed Bluetooth engineering testing software which can provide continuous transmitting RF signal. During Bluetooth SAR testing, this device was operated to transmit continuously at the maximum transmission duty with specified transmission mode, operating frequency, lowest data rate, and maximum output power.

The Bluetooth call box has been used during SAR measurement and the EUT was set to DH5 mode at the maximum output power. Its duty factor was calculated as below and the measured SAR for Bluetooth would be scaled to the 100% transmission duty factor to determine compliance.



Time-domain plot for Bluetooth transmission signal

The duty factor of Bluetooth signal has been calculated as following.

Duty Factor = Pulse Width / Total Period = (5.473-2.613) / (6.357-2.613) = 76.4 %

4.2 EUT Testing Position

4.2.1 Body Exposure Conditions

For laptop PC with antennas built-in on display screen, according to RSS-102 Supplementary procedures (SPR-001), IC requires SAR measurements to be performed with the side/edge of the display screen containing the built-in antenna pointing towards the flat phantom, unless the side/edge of the laptop computer containing the built-in antenna was already tested against the flat phantom to account for the user requirements (e.g. antenna in the laptop base). The separation distance shall not exceed 25 mm between the device and the flat phantom to show compliance for bystanders. Additional configurations regarding SAR testing for laptop computer are not required if the separation distance of 25 mm for bystanders represents the worst-case configuration.

The bystander SAR measurement procedure is as following.

1. If the integrated antenna is located in the back side of the display screen, the back side shall be facing towards the flat phantom at a distance not exceeding 25 mm.
2. If the integrated antenna is installed along the edge of the display screen, the edge shall be facing towards the flat phantom at a distance not exceeding 25 mm.
3. If the integrated antenna is installed at the corner of the display, both edges, as well as back side shall be tested to ensure that the worst-case configuration is captured.

For laptop PC, according to KDB 616217 D04, SAR evaluation is required for the bottom surface of the keyboard. This EUT was tested in the base of EUT directly against the flat phantom. The required minimum test separation distance for incorporating transmitters and antennas into laptop computer display is determined with the display screen opened at an angle of 90° to the keyboard compartment.

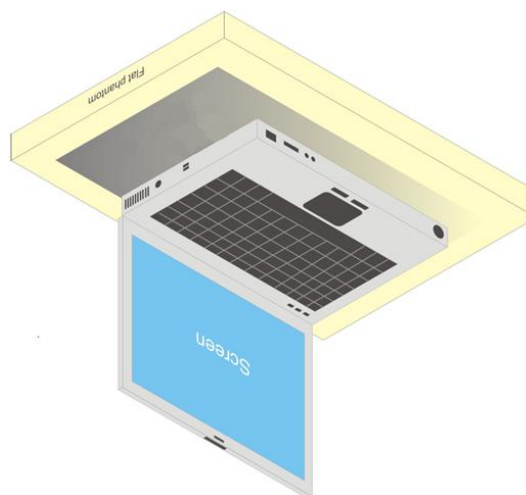


Fig-4.1 Illustration for Laptop Setup

For full-size tablet, according to KDB 616217 D04, SAR evaluation is required for back surface and edges of the devices. The back surface and edges of the tablet are tested with the tablet touching the phantom. Exposures from antennas through the front surface of the display section of a tablet are generally limited to the user's hands. Exposures to hands for typical consumer transmitters used in tablets are not expected to exceed the extremity SAR limit; therefore, SAR evaluation for the front surface of tablet display screens are generally not necessary. When voice mode is supported on a tablet and it is limited to speaker mode or headset operations only, additional SAR testing for this type of voice use is not required.

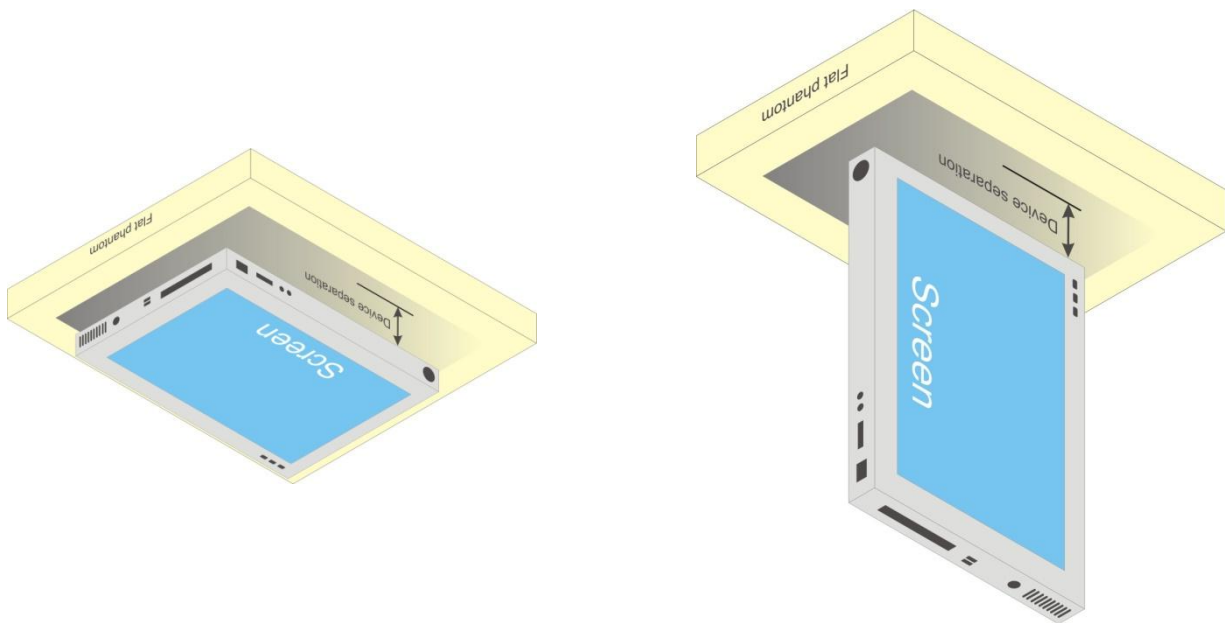


Fig-4.2 Illustration for Tablet Setup

4.2.2 SAR Test Exclusion Evaluations

According to KDB 447498 D01, the SAR test exclusion condition is based on source-based time-averaged maximum conducted output power, adjusted for tune-up tolerance, and the minimum test separation distance required for the exposure conditions. The SAR exclusion threshold is determined by the following formula.

1. For the test separation distance <= 50 mm

$$\frac{\text{Max. Tune up Power}_{(mW)}}{\text{Min. Test Separation Distance}_{(mm)}} \times \sqrt{f_{(GHz)}} \leq 3.0 \text{ for SAR-1g, } \leq 7.5 \text{ for SAR-10g}$$

When the minimum test separation distance is < 5 mm, a distance of 5 mm is applied to determine SAR test exclusion.

2. For the test separation distance > 50 mm, and the frequency at 100 MHz to 1500 MHz

$$\left[(\text{Threshold at 50 mm in Step 1}) + (\text{Test Separation Distance} - 50 \text{ mm}) \times \left(\frac{f_{(MHz)}}{150} \right) \right]_{(mW)}$$

3. For the test separation distance > 50 mm, and the frequency at > 1500 MHz to 6 GHz

$$[(\text{Threshold at 50 mm in Step 1}) + (\text{Test Separation Distance} - 50 \text{ mm}) \times 10]_{(mW)}$$

<For BT/WLAN Ant-0>

Mode	Max. Tune-up Power (dBm)	Max. Tune-up Power (mW)	Rear Face			Left Side			Right Side			Top Side			Bottom Side		
			Ant. to Surface (mm)	Calculated Result	Require SAR Testing?	Ant. to Surface (mm)	Calculated Result	Require SAR Testing?	Ant. to Surface (mm)	Calculated Result	Require SAR Testing?	Ant. to Surface (mm)	Calculated Result	Require SAR Testing?	Ant. to Surface (mm)	Calculated Result	Require SAR Testing?
WLAN 2.4G	16	40	5	12.55	Yes	171.2	1308 mW	No	86	456 mW	No	6.54	9.6	Yes	201.1	1607 mW	No
WLAN 5.2G	15	32	5	14.65	Yes	171.2	1278 mW	No	86	426 mW	No	6.54	11.2	Yes	201.1	1577 mW	No
WLAN 5.3G	15	32	5	14.76	Yes	171.2	1277 mW	No	86	425 mW	No	6.54	11.29	Yes	201.1	1576 mW	No
WLAN 5.6G	15	32	5	15.31	Yes	171.2	1275 mW	No	86	423 mW	No	6.54	11.7	Yes	201.1	1574 mW	No
WLAN 5.8G	15	32	5	15.45	Yes	171.2	1274 mW	No	86	422 mW	No	6.54	11.81	Yes	201.1	1573 mW	No
BT	10.5	11	5	3.46	Yes	171.2	1307 mW	No	86	455 mW	No	6.54	2.65	No	201.1	1606 mW	No

<For WLAN Ant-1>

Mode	Max. Tune-up Power (dBm)	Max. Tune-up Power (mW)	Rear Face			Left Side			Right Side			Top Side			Bottom Side		
			Ant. to Surface (mm)	Calculated Result	Require SAR Testing?	Ant. to Surface (mm)	Calculated Result	Require SAR Testing?	Ant. to Surface (mm)	Calculated Result	Require SAR Testing?	Ant. to Surface (mm)	Calculated Result	Require SAR Testing?	Ant. to Surface (mm)	Calculated Result	Require SAR Testing?
WLAN 2.4G	17	50	5	15.69	Yes	90	496 mW	No	166.5	1261 mW	No	6.34	12.37	Yes	201.1	1607 mW	No
WLAN 5.2G	17	50	5	22.89	Yes	90	466 mW	No	166.5	1231 mW	No	6.34	18.05	Yes	201.1	1577 mW	No
WLAN 5.3G	17	50	5	23.07	Yes	90	465 mW	No	166.5	1230 mW	No	6.34	18.19	Yes	201.1	1576 mW	No
WLAN 5.6G	17	50	5	23.92	Yes	90	463 mW	No	166.5	1228 mW	No	6.34	18.86	Yes	201.1	1574 mW	No
WLAN 5.8G	17	50	5	24.14	Yes	90	462 mW	No	166.5	1227 mW	No	6.34	19.03	Yes	201.1	1573 mW	No

FCC SAR Test Report

<For WLAN Ant-0 + Ant-1>

Mode	Max. Tune-up Power (dBm)	Max. Tune-up Power (mW)	Rear Face			Left Side			Right Side			Top Side			Bottom Side		
			Ant. to Surface (mm)	Calculated Result	Require SAR Testing?	Ant. to Surface (mm)	Calculated Result	Require SAR Testing?	Ant. to Surface (mm)	Calculated Result	Require SAR Testing?	Ant. to Surface (mm)	Calculated Result	Require SAR Testing?	Ant. to Surface (mm)	Calculated Result	Require SAR Testing?
WLAN 2.4G	16	40	5	12.55	Yes	90	496 mW	No	86	456 mW	No	6.34	9.9	Yes	201.1	1607 mW	No
WLAN 5.2G	15	32	5	14.65	Yes	90	466 mW	No	86	426 mW	No	6.34	11.55	Yes	201.1	1577 mW	No
WLAN 5.3G	15	32	5	14.76	Yes	90	465 mW	No	86	425 mW	No	6.34	11.64	Yes	201.1	1576 mW	No
WLAN 5.6G	15	32	5	15.31	Yes	90	463 mW	No	86	423 mW	No	6.34	12.07	Yes	201.1	1574 mW	No
WLAN 5.8G	15	32	5	15.45	Yes	90	462 mW	No	86	422 mW	No	6.34	12.18	Yes	201.1	1573 mW	No

Note:

1. When separation distance ≤ 50 mm and the calculated result shown in above table is ≤ 3.0 for SAR-1g exposure condition, or ≤ 7.5 for SAR-10g exposure condition, the SAR testing exclusion is applied.
2. When separation distance > 50 mm and the device output power is less than the calculated result (power threshold, mW) shown in above table, the SAR testing exclusion is applied.

4.3 Tissue Verification

The measuring results for tissue simulating liquid are shown as below.

Test Date	Tissue Type	Frequency (MHz)	Liquid Temp. (°C)	Measured Conductivity (σ)	Measured Permittivity (ε _r)	Target Conductivity (σ)	Target Permittivity (ε _r)	Conductivity Deviation (%)	Permittivity Deviation (%)
Apr. 01, 2019	Head	2450	23.2	1.87	39.052	1.8	39.2	3.89	-0.38
Apr. 03, 2019	Head	2450	23.1	1.88	38.449	1.8	39.2	4.44	-1.92
Apr. 16, 2019	Head	2450	23.2	1.827	38.941	1.8	39.2	1.50	-0.66
Mar. 31, 2019	Head	5250	23.3	4.607	34.846	4.71	35.9	-2.19	-2.94
Apr. 03, 2019	Head	5250	23.4	4.78	35.347	4.71	35.9	1.49	-1.54
Apr. 16, 2019	Head	5250	23.2	4.82	36.038	4.71	35.9	2.34	0.38
Apr. 18, 2019	Head	5250	23.4	4.818	35.611	4.71	35.9	2.29	-0.81
Apr. 01, 2019	Head	5600	23.3	4.893	35.577	5.07	35.5	-3.49	0.22
Apr. 03, 2019	Head	5600	23.4	5.159	34.746	5.07	35.5	1.76	-2.12
Apr. 16, 2019	Head	5600	23.2	5.21	35.501	5.07	35.5	2.76	0.00
Apr. 18, 2019	Head	5600	23.4	5.197	35.011	5.07	35.5	2.50	-1.38
Apr. 01, 2019	Head	5750	23.1	5.037	35.37	5.22	35.4	-3.51	-0.08
Apr. 16, 2019	Head	5750	23.2	5.348	35.482	5.22	35.4	2.45	0.23

Note:

The dielectric properties of the tissue simulating liquid must be measured within 24 hours before the SAR testing and within ±5% of the target values. Liquid temperature during the SAR testing must be within ±2 °C .

4.4 System Validation

The SAR measurement system was validated according to procedures in KDB 865664 D01. The validation status in tabulated summary is as below.

Test Date	Probe S/N	Calibration Point	Measured Conductivity (σ)	Measured Permittivity (ε _r)	Validation for CW			Validation for Modulation			
					Sensitivity Range	Probe Linearity	Probe Isotropy	Modulation Type	Duty Factor	PAR	
Apr. 01, 2019	3650	Head	2450	1.87	39.052	Pass	Pass	Pass	OFDM	N/A	Pass
Apr. 03, 2019	3898	Head	2450	1.88	38.449	Pass	Pass	Pass	OFDM	N/A	Pass
Apr. 16, 2019	3898	Head	2450	1.827	38.941	Pass	Pass	Pass	OFDM	N/A	Pass
Mar. 31, 2019	3820	Head	5250	4.607	34.846	Pass	Pass	Pass	OFDM	N/A	Pass
Apr. 03, 2019	3820	Head	5250	4.78	35.347	Pass	Pass	Pass	OFDM	N/A	Pass
Apr. 16, 2019	3898	Head	5250	4.82	36.038	Pass	Pass	Pass	OFDM	N/A	Pass
Apr. 18, 2019	3971	Head	5250	4.818	35.611	Pass	Pass	Pass	OFDM	N/A	Pass
Apr. 01, 2019	3650	Head	5600	4.893	35.577	Pass	Pass	Pass	OFDM	N/A	Pass
Apr. 03, 2019	3820	Head	5600	5.159	34.746	Pass	Pass	Pass	OFDM	N/A	Pass
Apr. 16, 2019	3898	Head	5600	5.21	35.501	Pass	Pass	Pass	OFDM	N/A	Pass
Apr. 18, 2019	3971	Head	5600	5.197	35.011	Pass	Pass	Pass	OFDM	N/A	Pass
Apr. 01, 2019	3650	Head	5750	5.037	35.37	Pass	Pass	Pass	OFDM	N/A	Pass
Apr. 16, 2019	3898	Head	5750	5.348	35.482	Pass	Pass	Pass	OFDM	N/A	Pass

4.5 System Verification

The measuring result for system verification is tabulated as below.

Test Date	Mode	Frequency (MHz)	1W Target SAR-1g (W/kg)	Measured SAR-1g (W/kg)	Normalized to 1W SAR-1g (W/kg)	Deviation (%)	Dipole S/N	Probe S/N	DAE S/N
Apr. 01, 2019	Head	2450	51.50	12.8	51.20	-0.58	737	3650	579
Apr. 03, 2019	Head	2450	51.50	13.4	53.60	4.08	737	3898	905
Apr. 16, 2019	Head	2450	51.50	13.4	53.60	4.08	737	3898	861
Mar. 31, 2019	Head	5250	78.90	8.06	80.60	2.15	1145	3820	910
Apr. 03, 2019	Head	5250	78.90	8.07	80.70	2.28	1145	3820	910
Apr. 16, 2019	Head	5250	78.90	7.85	78.50	-0.51	1145	3898	861
Apr. 18, 2019	Head	5250	78.90	8.01	80.10	1.52	1145	3971	1431
Apr. 01, 2019	Head	5600	80.30	7.64	76.40	-4.86	1145	3650	579
Apr. 03, 2019	Head	5600	80.30	8.5	85.00	5.85	1145	3820	910
Apr. 16, 2019	Head	5600	80.30	8.35	83.50	3.99	1145	3898	861
Apr. 18, 2019	Head	5600	80.30	8	80.00	-0.37	1145	3971	1431
Apr. 01, 2019	Head	5750	79.30	7.76	77.60	-2.14	1145	3650	579
Apr. 16, 2019	Head	5750	79.30	7.56	75.60	-4.67	1145	3898	861

Note:

Comparing to the reference SAR value provided by SPEAG, the validation data should be within its specification of 10 %. The result indicates the system check can meet the variation criterion and the plots can be referred to Appendix A of this report.

4.6 Maximum Output Power

4.6.1 Maximum Target Conducted Power

The maximum conducted average power (Unit: dBm) including tune-up tolerance is shown as below.

For Tablet Mode

<WLAN 2.4G>

Mode	Channel	Frequency (MHz)	Average Power (Ant-0)	Average Power (Ant-1)	Average Power (Ant-0 + Ant-1)
802.11b	1	2412	16.0	17.0	-
	6	2437	16.0	17.0	-
	11	2462	16.0	17.0	-
	12	2467	16.0	17.0	-
	13	2472	15.25	15.25	-
802.11g	1	2412	16.0	17.0	-
	6	2437	16.0	17.0	-
	11	2462	15.5	15.5	-
	12	2467	13.5	13.5	-
	13	2472	10.75	10.75	-
802.11n (HT20)	1	2412	16.0	17.0	16.0
	6	2437	16.0	17.0	16.0
	11	2462	15.5	15.5	14.5
	12	2467	13.5	13.5	13.0
	13	2472	10.75	10.75	7.75
802.11n (HT40)	3	2422	16.0	17.0	16.0
	6	2437	16.0	17.0	16.0
	9	2452	13.75	14.0	13.25
	10	2457	11.5	11.5	10.5
	11	2462	11.5	11.5	8.5
802.11ax (HE20)	1	2412	16.0	17.0	16.0
	6	2437	16.0	17.0	16.0
	11	2462	15.5	15.5	15.5
	12	2467	13.5	13.5	13.5
	13	2472	10.75	10.75	7.75
802.11ax (HE40)	3	2422	16.0	17.0	16.0
	6	2437	16.0	17.0	16.0
	9	2452	13.75	14.0	13.25
	10	2457	11.5	11.5	10.5
	11	2462	11.5	11.5	8.5

FCC SAR Test Report

<WLAN 5.2G>

Mode	Channel	Frequency (MHz)	Average Power (Ant-0)	Average Power (Ant-1)	Average Power (Ant-0 + Ant-1)
802.11a	36	5180	15.0	17.0	-
	40	5200	15.0	17.0	-
	44	5220	15.0	17.0	-
	48	5240	15.0	17.0	-
802.11n (HT20)	36	5180	15.0	17.0	15.0
	40	5200	15.0	17.0	15.0
	44	5220	15.0	17.0	15.0
	48	5240	15.0	17.0	15.0
802.11n (HT40)	38	5190	15.0	17.0	15.0
	46	5230	15.0	17.0	15.0
802.11ac (VHT20)	36	5180	15.0	17.0	15.0
	40	5200	15.0	17.0	15.0
	44	5220	15.0	17.0	15.0
	48	5240	15.0	17.0	15.0
802.11ac (VHT40)	38	5190	15.0	17.0	15.0
	46	5230	15.0	17.0	15.0
802.11ac (VHT80)	42	5210	15.0	17.0	15.0
802.11ax (HE20)	36	5180	15.0	17.0	15.0
	40	5200	15.0	17.0	15.0
	44	5220	15.0	17.0	15.0
	48	5240	15.0	17.0	15.0
802.11ax (HE40)	38	5190	15.0	17.0	15.0
	46	5230	15.0	17.0	15.0
802.11ax (HE80)	42	5210	15.0	17.0	15.0

FCC SAR Test Report

<WLAN 5.3G>

Mode	Channel	Frequency (MHz)	Average Power (Ant-0)	Average Power (Ant-1)	Average Power (Ant-0 + Ant-1)
802.11a	52	5260	15.0	17.0	-
	56	5280	15.0	17.0	-
	60	5300	15.0	17.0	-
	64	5320	15.0	17.0	-
802.11n (HT20)	52	5260	15.0	17.0	15.0
	56	5280	15.0	17.0	15.0
	60	5300	15.0	17.0	15.0
	64	5320	15.0	17.0	15.0
802.11n (HT40)	54	5270	15.0	17.0	15.0
	62	5310	15.0	17.0	15.0
802.11ac (VHT20)	52	5260	15.0	17.0	15.0
	56	5280	15.0	17.0	15.0
	60	5300	15.0	17.0	15.0
	64	5320	15.0	17.0	15.0
802.11ac (VHT40)	54	5270	15.0	17.0	15.0
	62	5310	15.0	17.0	15.0
802.11ac (VHT80)	58	5290	15.0	17.0	15.0
802.11ac (VHT160)	50	5250	14.5	14.5	13.0
802.11ax (HE20)	52	5260	15.0	17.0	15.0
	56	5280	15.0	17.0	15.0
	60	5300	15.0	17.0	15.0
	64	5320	15.0	17.0	15.0
802.11ax (HE40)	54	5270	15.0	17.0	15.0
	62	5310	15.0	17.0	15.0
802.11ax (HE80)	58	5290	15.0	17.0	15.0
802.11ax (HE160)	50	5250	14.5	14.5	13.0

FCC SAR Test Report

<WLAN 5.6G>

Mode	Channel	Frequency (MHz)	Average Power (Ant-0)	Average Power (Ant-1)	Average Power (Ant-0 + Ant-1)
802.11a	100	5500	15.0	17.0	-
	116	5580	15.0	17.0	-
	120	5600	15.0	17.0	-
	124	5620	15.0	17.0	-
	132	5660	15.0	17.0	-
	140	5700	15.0	17.0	-
	144	5720	15.0	17.0	-
802.11n (HT20)	100	5500	15.0	17.0	15.0
	116	5580	15.0	17.0	15.0
	120	5600	15.0	17.0	15.0
	124	5620	15.0	17.0	15.0
	132	5660	15.0	17.0	15.0
	140	5700	15.0	17.0	15.0
	144	5720	15.0	17.0	15.0
802.11n (HT40)	102	5510	15.0	17.0	15.0
	110	5550	15.0	17.0	15.0
	118	5590	15.0	17.0	15.0
	126	5630	15.0	17.0	15.0
	134	5670	15.0	17.0	15.0
	142	5710	15.0	17.0	15.0
802.11ac (VHT20)	100	5500	15.0	17.0	15.0
	116	5580	15.0	17.0	15.0
	120	5600	15.0	17.0	15.0
	124	5620	15.0	17.0	15.0
	132	5660	15.0	17.0	15.0
	140	5700	15.0	17.0	15.0
	144	5720	15.0	17.0	15.0
802.11ac (VHT40)	102	5510	15.0	17.0	15.0
	110	5550	15.0	17.0	15.0
	118	5590	15.0	17.0	15.0
	126	5630	15.0	17.0	15.0
	134	5670	15.0	17.0	15.0
	142	5710	15.0	17.0	15.0
802.11ac (VHT80)	106	5530	15.0	17.0	15.0
	122	5610	15.0	17.0	15.0
	138	5690	15.0	17.0	15.0
802.11ac (VHT160)	114	5570	15.0	15.5	13.5
802.11ax (HE20)	100	5500	15.0	17.0	15.0
	116	5580	15.0	17.0	15.0
	120	5600	15.0	17.0	15.0
	124	5620	15.0	17.0	15.0
	132	5660	15.0	17.0	15.0
	140	5700	15.0	17.0	15.0
	144	5720	15.0	17.0	15.0
802.11ax (HE40)	102	5510	15.0	17.0	15.0
	110	5550	15.0	17.0	15.0
	118	5590	15.0	17.0	15.0
	126	5630	15.0	17.0	15.0
	134	5670	15.0	17.0	15.0
	142	5710	15.0	17.0	15.0
802.11ax (HE80)	106	5530	15.0	17.0	15.0
	122	5610	15.0	17.0	15.0
	138	5690	15.0	17.0	15.0
802.11ax (HE160)	114	5570	15.0	15.5	13.5

FCC SAR Test Report

<WLAN 5.8G>

Mode	Channel	Frequency (MHz)	Average Power (Ant-0)	Average Power (Ant-1)	Average Power (Ant-0 + Ant-1)
802.11a	149	5745	15.0	17.0	-
	153	5765	15.0	17.0	-
	157	5785	15.0	17.0	-
	161	5805	15.0	17.0	-
	165	5825	15.0	17.0	-
802.11n (HT20)	149	5745	15.0	17.0	15.0
	153	5765	15.0	17.0	15.0
	157	5785	15.0	17.0	15.0
	161	5805	15.0	17.0	15.0
	165	5825	15.0	17.0	15.0
802.11n (HT40)	151	5755	15.0	17.0	15.0
	159	5795	15.0	17.0	15.0
802.11ac (VHT20)	149	5745	15.0	17.0	15.0
	153	5765	15.0	17.0	15.0
	157	5785	15.0	17.0	15.0
	161	5805	15.0	17.0	15.0
	165	5825	15.0	17.0	15.0
802.11ac (VHT40)	151	5755	15.0	17.0	15.0
	159	5795	15.0	17.0	15.0
802.11ac (VHT80)	155	5775	15.0	17.0	15.0
802.11ax (HE20)	149	5745	15.0	17.0	15.0
	153	5765	15.0	17.0	15.0
	157	5785	15.0	17.0	15.0
	161	5805	15.0	17.0	15.0
	165	5825	15.0	17.0	15.0
802.11ax (HE40)	151	5755	15.0	17.0	15.0
	159	5795	15.0	17.0	15.0
802.11ax (HE80)	155	5775	15.0	17.0	15.0

<Bluetooth>

Mode	Channel	Frequency (MHz)	Average Power
Bluetooth EDR	0	2402	10.5
	39	2441	10.5
	78	2480	10.5
Bluetooth LE	0	2402	5.5
	19	2440	5.5
	39	2480	5.5

FCC SAR Test Report



For Laptop Mode

<WLAN 2.4G>

Mode	Channel	Frequency (MHz)	Average Power (Ant-0)	Average Power (Ant-1)	Average Power (Ant-0 + Ant-1)
802.11b	1	2412	19.5	19.5	-
	6	2437	20.5	20.5	-
	11	2462	18.25	18.25	-
	12	2467	16.5	17.5	-
	13	2472	15.25	15.25	-
802.11g	1	2412	17.0	18.0	-
	6	2437	20.0	20.0	-
	11	2462	15.5	15.5	-
	12	2467	13.5	13.5	-
	13	2472	10.75	10.75	-
802.11n (HT20)	1	2412	17.0	18.0	16.25
	6	2437	20.0	20.0	17.5
	11	2462	15.5	15.5	14.5
	12	2467	13.5	13.5	13.0
	13	2472	10.75	10.75	7.75
802.11n (HT40)	3	2422	17.0	17.0	16.25
	6	2437	17.5	17.5	16.5
	9	2452	13.75	14.0	13.25
	10	2457	11.5	11.5	10.5
	11	2462	11.5	11.5	8.5
802.11ax (HE20)	1	2412	17.0	18.0	16.25
	6	2437	20.0	20.0	17.5
	11	2462	15.5	15.5	14.5
	12	2467	13.5	13.5	13.0
	13	2472	10.75	10.75	7.75
802.11ax (HE40)	3	2422	17.0	17.0	16.25
	6	2437	17.5	17.5	16.5
	9	2452	13.75	14.0	13.25
	10	2457	11.5	11.5	10.5
	11	2462	11.5	11.5	8.5

FCC SAR Test Report

<WLAN 5.2G>

Mode	Channel	Frequency (MHz)	Average Power (Ant-0)	Average Power (Ant-1)	Average Power (Ant-0 + Ant-1)
802.11a	36	5180	19.0	19.0	-
	40	5200	20.5	20.5	-
	44	5220	20.5	20.5	-
	48	5240	20.5	20.5	-
802.11n (HT20)	36	5180	19.0	19.0	18.0
	40	5200	20.5	20.5	19.5
	44	5220	20.5	20.5	19.5
	48	5240	20.5	20.5	19.5
802.11n (HT40)	38	5190	18.5	18.5	16.5
	46	5230	20.5	20.5	19.25
802.11ac (VHT20)	36	5180	19.0	19.0	18.0
	40	5200	20.5	20.5	19.5
	44	5220	20.5	20.5	19.5
	48	5240	20.5	20.5	19.5
802.11ac (VHT40)	38	5190	18.5	18.5	16.5
	46	5230	20.5	20.5	19.25
802.11ac (VHT80)	42	5210	18.5	18.5	16.5
802.11ax (HE20)	36	5180	19.0	19.0	18.0
	40	5200	20.5	20.5	19.5
	44	5220	20.5	20.5	19.5
	48	5240	20.5	20.5	19.5
802.11ax (HE40)	38	5190	18.5	18.5	16.5
	46	5230	20.5	20.5	19.25
802.11ax (HE80)	42	5210	18.5	18.5	16.5

FCC SAR Test Report

<WLAN 5.3G>

Mode	Channel	Frequency (MHz)	Average Power (Ant-0)	Average Power (Ant-1)	Average Power (Ant-0 + Ant-1)
802.11a	52	5260	20.5	20.5	-
	56	5280	20.5	20.5	-
	60	5300	20.5	20.5	-
	64	5320	18.75	18.75	-
802.11n (HT20)	52	5260	20.5	20.5	19.5
	56	5280	20.5	20.5	19.5
	60	5300	20.5	20.5	19.5
	64	5320	18.75	18.75	17.5
802.11n (HT40)	54	5270	20.5	20.5	19.25
	62	5310	17.5	17.5	16.0
802.11ac (VHT20)	52	5260	20.5	20.5	19.5
	56	5280	20.5	20.5	19.5
	60	5300	20.5	20.5	19.5
	64	5320	18.75	18.75	17.5
802.11ac (VHT40)	54	5270	20.5	20.5	19.25
	62	5310	17.5	17.5	16.0
802.11ac (VHT80)	58	5290	17.5	17.5	15.75
802.11ac (VHT160)	50	5250	14.75	14.5	14.5
802.11ax (HE20)	52	5260	20.5	20.5	19.5
	56	5280	20.5	20.5	19.5
	60	5300	20.5	20.5	19.5
	64	5320	18.75	18.75	17.5
802.11ax (HE40)	54	5270	20.5	20.5	19.25
	62	5310	17.5	17.5	16.0
802.11ax (HE80)	58	5290	17.5	17.5	15.75
802.11ax (HE160)	50	5250	14.75	14.5	14.5

FCC SAR Test Report

<WLAN 5.6G>

Mode	Channel	Frequency (MHz)	Average Power (Ant-0)	Average Power (Ant-1)	Average Power (Ant-0 + Ant-1)
802.11a	100	5500	19.5	19.5	-
	116	5580	20.5	20.5	-
	120	5600	20.5	20.5	-
	124	5620	20.5	20.5	-
	132	5660	20.5	20.5	-
	140	5700	19.0	19.25	-
	144	5720	20.5	20.5	-
802.11n (HT20)	100	5500	19.5	19.5	18.5
	116	5580	20.5	20.5	19.5
	120	5600	20.5	20.5	19.5
	124	5620	20.5	20.5	19.5
	132	5660	20.5	20.5	19.5
	140	5700	19.0	19.25	17.25
	144	5720	20.5	20.5	19.5
802.11n (HT40)	102	5510	19.0	19.0	18.0
	110	5550	20.5	20.5	19.5
	118	5590	20.5	20.5	19.5
	126	5630	20.5	20.5	19.5
	134	5670	19.5	18.5	18.5
	142	5710	20.5	20.5	19.5
802.11ac (VHT20)	100	5500	19.5	19.5	18.5
	116	5580	20.5	20.5	19.5
	120	5600	20.5	20.5	19.5
	124	5620	20.5	20.5	19.5
	132	5660	20.5	20.5	19.5
	140	5700	19.0	19.25	17.25
	144	5720	20.5	20.5	19.5
802.11ac (VHT40)	102	5510	19.0	19.0	18.0
	110	5550	20.5	20.5	19.5
	118	5590	20.5	20.5	19.5
	126	5630	20.5	20.5	19.5
	134	5670	19.5	18.5	18.5
	142	5710	20.5	20.5	19.5
802.11ac (VHT80)	106	5530	18.5	18.5	17.5
	122	5610	19.5	19.5	18.5
	138	5690	20.5	20.5	19.5
802.11ac (VHT160)	114	5570	15.5	14.5	14.5
802.11ax (HE20)	100	5500	19.5	19.5	18.5
	116	5580	20.5	20.5	19.5
	120	5600	20.5	20.5	19.5
	124	5620	20.5	20.5	19.5
	132	5660	20.5	20.5	19.5
	140	5700	19.0	19.25	17.25
	144	5720	20.5	20.5	19.5
802.11ax (HE40)	102	5510	19.0	19.0	18.0
	110	5550	20.5	20.5	19.5
	118	5590	20.5	20.5	19.5
	126	5630	20.5	20.5	19.5
	134	5670	19.5	18.5	18.5
	142	5710	20.5	20.5	19.5
802.11ax (HE80)	106	5530	18.5	18.5	17.5
	122	5610	19.5	19.5	18.5
	138	5690	20.5	20.5	19.5
802.11ax (HE160)	114	5570	15.5	14.5	14.5

FCC SAR Test Report

<WLAN 5.8G>

Mode	Channel	Frequency (MHz)	Average Power (Ant-0)	Average Power (Ant-1)	Average Power (Ant-0 + Ant-1)
802.11a	149	5745	20.5	20.5	-
	153	5765	20.5	20.5	-
	157	5785	20.5	20.5	-
	161	5805	20.5	20.5	-
	165	5825	20.5	20.5	-
802.11n (HT20)	149	5745	20.5	20.5	19.5
	153	5765	20.5	20.5	19.5
	157	5785	20.5	20.5	19.5
	161	5805	20.5	20.5	19.5
	165	5825	20.5	20.5	19.5
802.11n (HT40)	151	5755	20.5	20.5	19.5
	159	5795	20.5	20.5	19.5
802.11ac (VHT20)	149	5745	20.5	20.5	19.5
	153	5765	20.5	20.5	19.5
	157	5785	20.5	20.5	19.5
	161	5805	20.5	20.5	19.5
	165	5825	20.5	20.5	19.5
802.11ac (VHT40)	151	5755	20.5	20.5	19.5
	159	5795	20.5	20.5	19.5
802.11ac (VHT80)	155	5775	19.25	19.0	18.25
802.11ax (HE20)	149	5745	20.5	20.5	19.5
	153	5765	20.5	20.5	19.5
	157	5785	20.5	20.5	19.5
	161	5805	20.5	20.5	19.5
	165	5825	20.5	20.5	19.5
802.11ax (HE40)	151	5755	20.5	20.5	19.5
	159	5795	20.5	20.5	19.5
802.11ax (HE80)	155	5775	19.25	19.0	18.25

<Bluetooth>

Mode	Channel	Frequency (MHz)	Average Power
Bluetooth EDR	0	2402	10.5
	39	2441	10.5
	78	2480	10.5
Bluetooth LE	0	2402	5.5
	19	2440	5.5
	39	2480	5.5

FCC SAR Test Report

4.6.2 Measured Conducted Power Result

The measuring conducted average power (Unit: dBm) is shown as below.

For Tablet Mode

<WLAN 2.4G>

Mode	Channel	Frequency (MHz)	Average Power (Ant-0)	Average Power (Ant-1)	Average Power (Ant-0 + Ant-1)
802.11b	1	2412	15.84	16.93	-
	6	2437	15.94	16.87	-
	11	2462	15.99	16.91	-
	12	2467	15.86	16.83	-
	13	2472	15.23	15.14	-
802.11g	1	2412	-	16.97	-
	6	2437	-	16.98	-
	11	2462	-	15.45	-
	12	2467	-	13.42	-
	13	2472	-	10.71	-
802.11n (HT20)	1	2412	-	16.97	-
	6	2437	-	16.98	-
	11	2462	-	15.45	-
	12	2467	-	13.32	-
	13	2472	-	10.68	-
802.11n (HT40)	3	2422	-	15.98	15.95
	6	2437	-	15.98	15.94
	9	2452	-	13.97	13.24
	10	2457	-	11.36	10.41
	11	2462	-	11.32	8.36

<WLAN 5.3G>

Mode	Channel	Frequency (MHz)	Average Power (Ant-0)	Average Power (Ant-1)	Average Power (Ant-0 + Ant-1)
802.11ac (VHT80)	58	5290	14.99	16.93	14.94

<WLAN 5.6G>

Mode	Channel	Frequency (MHz)	Average Power (Ant-0)	Average Power (Ant-1)	Average Power (Ant-0 + Ant-1)
802.11ac (VHT80)	106	5530	14.98	16.99	14.94
	122	5610	14.90	16.95	14.86
	138	5690	14.92	16.93	14.98
802.11ac (VHT160)	114	5570	14.98	-	-

<WLAN 5.8G>

Mode	Channel	Frequency (MHz)	Average Power (Ant-0)	Average Power (Ant-1)	Average Power (Ant-0 + Ant-1)
802.11ac (VHT80)	155	5775	14.86	16.94	14.91

FCC SAR Test Report

<Bluetooth>

Mode	Channel	Frequency (MHz)	Average Power
Bluetooth BDR	0	2402	9.47
	39	2441	9.31
	78	2480	9.49
Bluetooth LE	0	2402	4.82
	19	2440	4.51
	39	2480	4.54

For Laptop Mode

<WLAN 2.4G>

Mode	Channel	Frequency (MHz)	Average Power (Ant-0)	Average Power (Ant-1)	Average Power (Ant-0 + Ant-1)
802.11b	1	2412	19.45	19.34	-
	6	2437	20.45	20.32	-
	11	2462	18.23	18.19	-
	12	2467	16.43	17.38	-
	13	2472	15.24	15.23	-
802.11n (HT20)	1	2412	-	-	16.22
	6	2437	-	-	17.38
	11	2462	-	-	14.48
	12	2467	-	-	12.98
	13	2472	-	-	7.61

<WLAN 5.3G>

Mode	Channel	Frequency (MHz)	Average Power (Ant-0)	Average Power (Ant-1)	Average Power (Ant-0 + Ant-1)
802.11n (HT20)	52	5260	-	-	19.48
	56	5280	-	-	19.45
	60	5300	-	-	19.31
	64	5320	-	-	17.36
802.11n (HT40)	54	5270	20.48	20.43	-
	62	5310	17.42	17.43	-

<WLAN 5.6G>

Mode	Channel	Frequency (MHz)	Average Power (Ant-0)	Average Power (Ant-1)	Average Power (Ant-0 + Ant-1)
802.11ac (VHT80)	106	5530	18.43	18.44	17.48
	122	5610	19.35	19.37	18.44
	138	5690	20.41	20.42	19.49

<WLAN 5.8G>

Mode	Channel	Frequency (MHz)	Average Power (Ant-0)	Average Power (Ant-1)	Average Power (Ant-0 + Ant-1)
802.11n (HT40)	151	5755	20.39	20.42	19.36
	159	5795	20.42	20.48	19.48

FCC SAR Test Report

<Bluetooth>

Mode	Channel	Frequency (MHz)	Average Power
Bluetooth BDR	0	2402	9.47
	39	2441	9.31
	78	2480	9.49
Bluetooth LE	0	2402	4.82
	19	2440	4.51
	39	2480	4.54

4.7 SAR Testing Results

4.7.1 SAR Test Reduction Considerations

<KDB 447498 D01, General RF Exposure Guidance>

Testing of other required channels within the operating mode of a frequency band is not required when the reported SAR for the mid-band or highest output power channel is:

- (1) ≤ 0.8 W/kg or 2.0 W/kg, for 1-g or 10-g respectively, when the transmission band is ≤ 100 MHz
- (2) ≤ 0.6 W/kg or 1.5 W/kg, for 1-g or 10-g respectively, when the transmission band is between 100 MHz and 200 MHz
- (3) ≤ 0.4 W/kg or 1.0 W/kg, for 1-g or 10-g respectively, when the transmission band is ≥ 200 MHz

When SAR is not measured at the maximum power level allowed for production units, the measured SAR will be scaled to the maximum tune-up tolerance limit to determine compliance. The scaling factor for the tune-up power is defined as maximum tune-up limit (mW) / measured conducted power (mW). The reported SAR would be calculated by measured SAR x tune-up power scaling factor.

The SAR has been measured with highest transmission duty factor supported by the test mode tools for WLAN and/or Bluetooth. When the transmission duty factor could not achieve 100%, the reported SAR will be scaled to 100% transmission duty factor to determine compliance at the maximum tune-up power. The scaling factor for the duty factor is defined as 100% / transmission duty cycle (%). The reported SAR would be calculated by measured SAR x tune-up power scaling factor x duty cycle scaling factor.

<KDB 248227 D01, SAR Guidance for Wi-Fi Transmitters>

- (1) For handsets operating next to ear, hotspot mode or mini-tablet configurations, the initial test position procedures were applied. The test position with the highest extrapolated peak SAR will be used as the initial test position. When the reported SAR of initial test position is ≤ 0.4 W/kg, SAR testing for remaining test positions is not required. Otherwise, SAR is evaluated at the subsequent highest peak SAR positions until the reported SAR result is ≤ 0.8 W/kg or all test positions are measured.
- (2) For WLAN 2.4 GHz, the highest measured maximum output power channel for DSSS was selected for SAR measurement. When the reported SAR is ≤ 0.8 W/kg, no further SAR testing is required. Otherwise, SAR is evaluated at the next highest measured output power channel. When any reported SAR is > 1.2 W/kg, SAR is required for the third channel. For OFDM modes (802.11g/n), SAR is not required when the highest reported SAR for DSSS is adjusted by the ratio of OFDM to DSSS specified maximum output power and it is ≤ 1.2 W/kg.
- (3) For WLAN 5 GHz, the initial test configuration was selected according to the transmission mode with the highest maximum output power. When the reported SAR of initial test configuration is > 0.8 W/kg, SAR is required for the subsequent highest measured output power channel until the reported SAR result is ≤ 1.2 W/kg or all required channels are measured. For other transmission modes, SAR is not required when the highest reported SAR for initial test configuration is adjusted by the ratio of subsequent test configuration to initial test configuration specified maximum output power and it is ≤ 1.2 W/kg.

FCC SAR Test Report

(4) For WLAN MIMO mode, the power-based standalone SAR test exclusion or the sum of SAR provision in KDB 447498 to determine simultaneous transmission SAR test exclusion should be applied. Otherwise, SAR for MIMO mode will be measured with all applicable antennas transmitting simultaneously at the specified maximum output power of MIMO operation.

4.7.2 SAR Results for Body Exposure Condition (Test Separation Distance is 0 mm)

<Tablet Mode>

Plot No.	Band	Mode	Test Position	Ch.	Keyboard	Tx Antenna	Duty Cycle	Crest Factor	Max. Tune-up Power (dBm)	Measured Conducted Power (dBm)	Scaling Factor	Power Drift (dB)	Measured SAR-1g (W/kg)	Scaled SAR-1g (W/kg)
	WLAN2.4G	802.11b	Rear Face	11	-	Ant 0	99.00	1.01	16.0	15.99	1.00	-0.18	0.603	0.61
	WLAN2.4G	802.11b	Right Side	11	-	Ant 0	99.00	1.01	16.0	15.99	1.00	-0.12	0.241	0.24
	WLAN2.4G	802.11b	Top Side	11	-	Ant 0	99.00	1.01	16.0	15.99	1.00	0.10	0.114	0.12
01	WLAN2.4G	802.11b	Rear Face	1	-	Ant 1	99.00	1.01	17.0	16.93	1.02	-0.10	1.34	1.38
	WLAN2.4G	802.11b	Right Side	1	-	Ant 1	99.00	1.01	17.0	16.93	1.02	0	<0.001	0.00
	WLAN2.4G	802.11b	Top Side	1	-	Ant 1	99.00	1.01	17.0	16.93	1.02	-0.18	0.52	0.54
	WLAN2.4G	802.11n HT40	Rear Face	3	-	Ant 0+1	97.60	1.02	16.0	15.95	1.01	0.16	0.477	0.49
	WLAN2.4G	802.11n HT40	Right Side	3	-	Ant 0+1	97.60	1.02	16.0	15.95	1.01	-0.11	0.144	0.15
	WLAN2.4G	802.11n HT40	Top Side	3	-	Ant 0+1	97.60	1.02	16.0	15.95	1.01	-0.05	0.138	0.14
	WLAN2.4G	802.11b	Rear Face	6	-	Ant 1	99.00	1.01	17.0	16.87	1.03	0.11	1.28	1.33
	WLAN2.4G	802.11b	Rear Face	11	-	Ant 1	99.00	1.01	17.0	16.91	1.02	0.12	1.19	1.23
	WLAN2.4G	802.11b	Rear Face	12	-	Ant 1	99.00	1.01	17.0	16.83	1.04	0.02	1.1	1.16
	WLAN2.4G	802.11b	Rear Face	13	-	Ant 1	99.00	1.01	15.25	15.14	1.03	0.05	0.799	0.83
	WLAN2.4G	802.11g	Rear Face	6	-	Ant 1	99.00	1.01	17.0	16.98	1.00	0.05	0.715	0.72
	WLAN2.4G	802.11n HT20	Rear Face	6	-	Ant 1	97.60	1.02	17.0	16.98	1.00	0.15	0.677	0.68
	WLAN2.4G	802.11n HT40	Rear Face	3	-	Ant 1	97.60	1.02	17.0	15.98	1.26	0.14	0.578	0.74
	WLAN2.4G	802.11n HT40	Rear Face	6	-	Ant 1	97.60	1.02	17.0	15.98	1.26	0.11	0.581	0.74
	WLAN2.4G	802.11b	Rear Face	1	1	Ant 1	99.00	1.01	17.0	16.93	1.02	0.11	0.282	0.29
	WLAN2.4G	802.11b	Rear Face	1	2	Ant 1	99.00	1.01	17.0	16.93	1.02	0.05	0.522	0.54
	WLAN2.4G	802.11b	Rear Face	1	-	Ant 1	99.00	1.01	17.0	16.93	1.02	-0.10	1.31	1.35
	WLAN5.3G	802.11ac VHT80	Rear Face	58	-	Ant 0	97.80	1.02	15.0	14.99	1.00	0.11	0.62	0.63
	WLAN5.3G	802.11ac VHT80	Right Side	58	-	Ant 0	97.80	1.02	15.0	14.99	1.00	-0.16	0.287	0.29
	WLAN5.3G	802.11ac VHT80	Top Side	58	-	Ant 0	97.80	1.02	15.0	14.99	1.00	-0.17	0.352	0.36
02	WLAN5.3G	802.11ac VHT80	Rear Face	58	-	Ant 1	98.00	1.02	17.0	16.93	1.02	-0.11	1.09	1.13
	WLAN5.3G	802.11ac VHT80	Right Side	58	-	Ant 1	98.00	1.02	17.0	16.93	1.02	0	<0.001	0.00
	WLAN5.3G	802.11ac VHT80	Top Side	58	-	Ant 1	98.00	1.02	17.0	16.93	1.02	-0.06	0.504	0.52
	WLAN5.3G	802.11ac VHT80	Rear Face	58	-	Ant 0+1	97.80	1.02	15.0	14.94	1.01	-0.07	0.538	0.55
	WLAN5.3G	802.11ac VHT80	Right Side	58	-	Ant 0+1	97.80	1.02	15.0	14.94	1.01	0.12	0.127	0.13
	WLAN5.3G	802.11ac VHT80	Top Side	58	-	Ant 0+1	97.80	1.02	15.0	14.94	1.01	-0.02	0.152	0.16
	WLAN5.3G	802.11ac VHT80	Rear Face	58	1	Ant 1	98.00	1.02	17.0	16.93	1.02	0.12	0.182	0.19
	WLAN5.3G	802.11ac VHT80	Rear Face	58	2	Ant 1	98.00	1.02	17.0	16.93	1.02	0.13	0.253	0.26
	WLAN5.3G	802.11ac VHT80	Rear Face	58	-	Ant 1	98.00	1.02	17.0	16.93	1.02	-0.11	1.05	1.09

Note: The "< 0.001" means there is no SAR value or the SAR is too low to be measured.

FCC SAR Test Report

Plot No.	Band	Mode	Test Position	Ch.	Keyboard	Tx Antenna	Duty Cycle	Crest Factor	Max. Tune-up Power (dBm)	Measured Conducted Power (dBm)	Scaling Factor	Power Drift (dB)	Measured SAR-1g (W/kg)	Scaled SAR-1g (W/kg)
	WLAN5.6G	802.11ac VHT160	Rear Face	114	-	Ant 0	97.80	1.02	15.0	14.98	1.00	-0.11	0.548	0.56
	WLAN5.6G	802.11ac VHT160	Right Side	114	-	Ant 0	97.80	1.02	15.0	14.98	1.00	0.11	0.021	0.02
	WLAN5.6G	802.11ac VHT160	Top Side	114	-	Ant 0	97.80	1.02	15.0	14.98	1.00	0.03	0.055	0.06
03	WLAN5.6G	802.11ac VHT80	Rear Face	106	-	Ant 1	98.00	1.02	17.0	16.99	1.00	-0.07	1.17	1.19
	WLAN5.6G	802.11ac VHT80	Right Side	106	-	Ant 1	98.00	1.02	17.0	16.99	1.00	0	<0.001	0.00
	WLAN5.6G	802.11ac VHT80	Top Side	106	-	Ant 1	98.00	1.02	17.0	16.99	1.00	0.02	0.534	0.54
	WLAN5.6G	802.11ac VHT80	Rear Face	138	-	Ant 0+1	98.00	1.02	15.0	14.98	1.00	0.03	0.302	0.31
	WLAN5.6G	802.11ac VHT80	Right Side	138	-	Ant 0+1	98.00	1.02	15.0	14.98	1.00	0	<0.001	0.00
	WLAN5.6G	802.11ac VHT80	Top Side	138	-	Ant 0+1	98.00	1.02	15.0	14.98	1.00	-0.08	0.142	0.14
	WLAN5.6G	802.11ac VHT80	Rear Face	122	-	Ant 1	98.00	1.02	17.0	16.95	1.01	0.05	1.13	1.16
	WLAN5.6G	802.11ac VHT80	Rear Face	138	-	Ant 1	98.00	1.02	17.0	16.93	1.02	0.14	1.05	1.09
	WLAN5.6G	802.11ac VHT80	Rear Face	106	1	Ant 1	98.00	1.02	17.0	16.99	1.00	0.00	0.177	0.18
	WLAN5.6G	802.11ac VHT80	Rear Face	106	2	Ant 1	98.00	1.02	17.0	16.99	1.00	0.13	0.254	0.26
	WLAN5.6G	802.11ac VHT80	Rear Face	106	-	Ant 1	98.00	1.02	17.0	16.99	1.00	-0.07	1.15	1.17
	WLAN5.8G	802.11ac VHT80	Rear Face	155	-	Ant 0	97.80	1.02	15.0	14.86	1.03	-0.12	0.12	0.13
	WLAN5.8G	802.11ac VHT80	Right Side	155	-	Ant 0	97.80	1.02	15.0	14.86	1.03	0	<0.001	0.00
	WLAN5.8G	802.11ac VHT80	Top Side	155	-	Ant 0	97.80	1.02	15.0	14.86	1.03	0.02	0.073	0.08
04	WLAN5.8G	802.11ac VHT80	Rear Face	155	-	Ant 1	98.00	1.02	17.0	16.94	1.01	-0.12	0.413	0.43
	WLAN5.8G	802.11ac VHT80	Right Side	155	-	Ant 1	98.00	1.02	17.0	16.94	1.01	0	<0.001	0.00
	WLAN5.8G	802.11ac VHT80	Top Side	155	-	Ant 1	98.00	1.02	17.0	16.94	1.01	-0.07	0.336	0.35
	WLAN5.8G	802.11ac VHT80	Rear Face	155	-	Ant 0+1	98.00	1.02	15.0	14.91	1.02	-0.06	0.232	0.24
	WLAN5.8G	802.11ac VHT80	Right Side	155	-	Ant 0+1	98.00	1.02	15.0	14.91	1.02	0	<0.001	0.00
	WLAN5.8G	802.11ac VHT80	Top Side	155	-	Ant 0+1	98.00	1.02	15.0	14.91	1.02	0.08	0.126	0.13
	WLAN5.8G	802.11ac VHT80	Rear Face	155	1	Ant 1	98.00	1.02	17.0	16.94	1.01	0	<0.001	0.00
	WLAN5.8G	802.11ac VHT80	Rear Face	155	2	Ant 1	98.00	1.02	17.0	16.94	1.01	0	<0.001	0.00
	BT	BDR	Rear Face	78	-	Ant 0	76.40	1.31	10.5	9.49	1.26	-0.13	0.102	0.17
	BT	BDR	Right Side	78	-	Ant 0	76.40	1.31	10.5	9.47	1.27	0	<0.001	0.00
	BT	BDR	Top Side	78	-	Ant 0	76.40	1.31	10.5	9.49	1.26	0.16	0.031	0.05
05	BT	BDR	Rear Face	0	-	Ant 0	76.40	1.31	10.5	9.47	1.27	-0.13	0.125	0.21
	BT	BDR	Rear Face	39	-	Ant 0	76.40	1.31	10.5	9.31	1.32	0.05	0.097	0.17
	BT	BDR	Rear Face	0	1	Ant 0	76.40	1.31	10.5	9.47	1.27	0	<0.001	0.00
	BT	BDR	Rear Face	0	2	Ant 0	76.40	1.31	10.5	9.47	1.27	0	<0.001	0.00

Note: The "< 0.001" means there is no SAR value or the SAR is too low to be measured.

FCC SAR Test Report

<Laptop Mode>

Plot No.	Band	Mode	Test Position	Separation Distance (mm)	Ch.	Keyboard	Tx Antenna	Duty Cycle	Crest Factor	Max. Tune-up Power (dBm)	Measured Conducted Power (dBm)	Scaling Factor	Power Drift (dB)	Measured SAR-1g (W/kg)	Scaled SAR-1g (W/kg)
06	WLAN 2.4G	802.11b	Bottom	0	6	1	Ant 0	99.00	1.01	20.5	20.45	1.01	0	<0.001	0.00
	WLAN 2.4G	802.11b	Back of Panel	25	6	1	Ant 0	99.00	1.01	20.5	20.45	1.01	0.17	0.050	0.05
	WLAN 2.4G	802.11b	Top Side of Panel	25	6	1	Ant 0	99.00	1.01	20.5	20.45	1.01	0	<0.001	0.00
	WLAN 2.4G	802.11b	Bottom	0	6	1	Ant 1	99.00	1.01	20.5	20.32	1.04	0	<0.001	0.00
	WLAN 2.4G	802.11b	Back of Panel	25	6	1	Ant 1	99.00	1.01	20.5	20.32	1.04	0.12	0.048	0.05
	WLAN 2.4G	802.11b	Top Side of Panel	25	6	1	Ant 1	99.00	1.01	20.5	20.32	1.04	0.12	<0.001	0.00
	WLAN 2.4G	802.11n HT20	Bottom	0	6	1	Ant 0+1	97.60	1.02	17.5	17.38	1.03	0	<0.001	0.00
	WLAN 2.4G	802.11n HT20	Back of Panel	25	6	1	Ant 0+1	97.60	1.02	17.5	17.38	1.03	0	<0.001	0.00
	WLAN 2.4G	802.11n HT20	Top Side of Panel	25	6	1	Ant 0+1	97.60	1.02	17.5	17.38	1.03	0	<0.001	0.00
	WLAN 2.4G	802.11b	Back of Panel	25	1	1	Ant 0	99.00	1.01	19.5	19.45	1.01	0.14	0.023	0.02
	WLAN 2.4G	802.11b	Back of Panel	25	11	1	Ant 0	99.00	1.01	18.25	18.23	1.00	0	<0.001	0.00
	WLAN 2.4G	802.11b	Back of Panel	25	12	1	Ant 0	99.00	1.01	16.5	16.43	1.02	0	<0.001	0.00
	WLAN 2.4G	802.11b	Back of Panel	25	13	1	Ant 0	99.00	1.01	15.25	15.24	1.00	0	<0.001	0.00
	WLAN 2.4G	802.11b	Back of Panel	25	6	2	Ant 0	99.00	1.01	20.5	20.45	1.01	0.12	0.032	0.03
07	WLAN 5.3G	802.11n HT40	Bottom	0	54	1	Ant 0	97.40	1.03	20.5	20.48	1.00	0	<0.001	0.00
	WLAN 5.3G	802.11n HT40	Back of Panel	25	54	1	Ant 0	97.40	1.03	20.5	20.48	1.00	0.12	0.099	0.10
	WLAN 5.3G	802.11n HT40	Top Side of Panel	25	54	1	Ant 0	97.40	1.03	20.5	20.48	1.00	0	<0.001	0.00
	WLAN 5.3G	802.11n HT40	Bottom	0	54	1	Ant 1	97.40	1.03	20.5	20.43	1.02	0	<0.001	0.00
	WLAN 5.3G	802.11n HT40	Back of Panel	25	54	1	Ant 1	97.40	1.03	20.5	20.43	1.02	-0.11	0.100	0.11
	WLAN 5.3G	802.11n HT40	Top Side of Panel	25	54	1	Ant 1	97.40	1.03	20.5	20.43	1.02	0	<0.001	0.00
	WLAN 5.3G	802.11n HT20	Bottom	0	52	1	Ant 0+1	99.00	1.01	19.5	19.48	1.00	0	<0.001	0.00
	WLAN 5.3G	802.11n HT20	Back of Panel	25	52	1	Ant 0+1	99.00	1.01	19.5	19.48	1.00	0	<0.001	0.00
	WLAN 5.3G	802.11n HT20	Top Side of Panel	25	52	1	Ant 0+1	99.00	1.01	19.5	19.48	1.00	0	<0.001	0.00
	WLAN 5.3G	802.11n HT40	Back of Panel	25	62	1	Ant 1	97.40	1.03	17.5	17.43	1.02	0	<0.001	0.00
08	WLAN 5.6G	802.11ac VHF80	Bottom	0	138	1	Ant 0	97.80	1.02	20.5	20.41	1.02	0	<0.001	0.00
	WLAN 5.6G	802.11ac VHF80	Back of Panel	25	138	1	Ant 0	97.80	1.02	20.5	20.41	1.02	-0.14	0.037	0.04
	WLAN 5.6G	802.11ac VHF80	Top Side of Panel	25	138	1	Ant 0	97.80	1.02	20.5	20.41	1.02	0	<0.001	0.00
	WLAN 5.6G	802.11ac VHF80	Bottom	0	138	1	Ant 1	98.00	1.02	20.5	20.42	1.02	0	<0.001	0.00
	WLAN 5.6G	802.11ac VHF80	Back of Panel	25	138	1	Ant 1	98.00	1.02	20.5	20.42	1.02	0	<0.001	0.00
	WLAN 5.6G	802.11ac VHF80	Top Side of Panel	25	138	1	Ant 1	98.00	1.02	20.5	20.42	1.02	0	<0.001	0.00
	WLAN 5.6G	802.11ac VHF80	Bottom	0	138	1	Ant 0+1	98.00	1.02	19.5	19.49	1.00	0	<0.001	0.00
	WLAN 5.6G	802.11ac VHF80	Back of Panel	25	138	1	Ant 0+1	98.00	1.02	19.5	19.49	1.00	0	<0.001	0.00
	WLAN 5.6G	802.11ac VHF80	Top Side of Panel	25	138	1	Ant 0+1	98.00	1.02	19.5	19.49	1.00	0	<0.001	0.00
	WLAN 5.6G	802.11ac VHF80	Back of Panel	25	106	1	Ant 0	97.80	1.02	18.5	18.43	1.02	0	<0.001	0.00
09	WLAN 5.8G	802.11n HT40	Bottom	0	159	1	Ant 0	97.40	1.03	20.5	20.42	1.02	0	<0.001	0.00
	WLAN 5.8G	802.11n HT40	Back of Panel	25	159	1	Ant 0	97.40	1.03	20.5	20.42	1.02	-0.15	0.050	0.05
	WLAN 5.8G	802.11n HT40	Top Side of Panel	25	159	1	Ant 0	97.40	1.03	20.5	20.42	1.02	0	<0.001	0.00
	WLAN 5.8G	802.11n HT40	Bottom	0	159	1	Ant 1	97.40	1.03	20.5	20.48	1.00	0	<0.001	0.00
	WLAN 5.8G	802.11n HT40	Back of Panel	25	159	1	Ant 1	97.40	1.03	20.5	20.48	1.00	0	<0.001	0.00
	WLAN 5.8G	802.11n HT40	Top Side of Panel	25	159	1	Ant 1	97.40	1.03	20.5	20.48	1.00	0	<0.001	0.00
	WLAN 5.8G	802.11n HT40	Bottom	0	159	1	Ant 0+1	97.40	1.03	19.5	19.48	1.00	0	<0.001	0.00
	WLAN 5.8G	802.11n HT40	Back of Panel	25	159	1	Ant 0+1	97.40	1.03	19.5	19.48	1.00	0	<0.001	0.00
	WLAN 5.8G	802.11n HT40	Top Side of Panel	25	159	1	Ant 0+1	97.40	1.03	19.5	19.48	1.00	0	<0.001	0.00
	WLAN 5.8G	802.11n HT40	Back of Panel	25	151	1	Ant 0	97.40	1.03	20.5	20.39	1.03	0	<0.001	0.00
Bluetooth	BDR	Bottom	0	78	1	Ant 0	76.40	1.31	10.5	9.49	1.26	0	<0.001	0.00	
	BDR	Back of Panel	25	78	1	Ant 0	76.40	1.31	10.5	9.49	1.26	0	<0.001	0.00	
	BDR	Top Side of Panel	25	78	1	Ant 0	76.40	1.31	10.5	9.49	1.26	0	<0.001	0.00	
	BDR	Back of Panel	25	0	1	Ant 0	76.40	1.31	10.5	9.31	1.32	0	<0.001	0.00	
	BDR	Back of Panel	25	39	1	Ant 0	76.40	1.31	10.5	9.47	1.27	0	<0.001	0.00	
	BDR	Back of Panel	25	78	2	Ant 0	76.40	1.31	10.5	9.49	1.26	0	<0.001	0.00	

Note: The "< 0.001" means there is no SAR value or the SAR is too low to be measured.

4.7.3 SAR Measurement Variability

According to KDB 865664 D01, SAR measurement variability was assessed for each frequency band, which is determined by the SAR probe calibration point and tissue-equivalent medium used for the device measurements. When both head and body tissue-equivalent media are required for SAR measurements in a frequency band, the variability measurement procedures should be applied to the tissue medium with the highest measured SAR, using the highest measured SAR configuration for that tissue-equivalent medium. Alternatively, if the highest measured SAR for both head and body tissue-equivalent media are ≤ 1.45 W/kg and the ratio of these highest SAR values, i.e., largest divided by smallest value, is ≤ 1.10 , the highest SAR configuration for either head or body tissue-equivalent medium may be used to perform the repeated measurement. These additional measurements are repeated after the completion of all measurements requiring the same head or body tissue-equivalent medium in a frequency band. The test device should be returned to ambient conditions (normal room temperature) with the battery fully charged before it is re-mounted on the device holder for the repeated measurement(s) to minimize any unexpected variations in the repeated results.

SAR repeated measurement procedure:

1. When the highest measured SAR is < 0.80 W/kg, repeated measurement is not required.
2. When the highest measured SAR is ≥ 0.80 W/kg, repeat that measurement once.
3. If the ratio of largest to smallest SAR for the original and first repeated measurements is > 1.20 , or when the original or repeated measurement is ≥ 1.45 W/kg, perform a second repeated measurement.
4. If the ratio of largest to smallest SAR for the original, first and second repeated measurements is > 1.20 , and the original, first or second repeated measurement is ≥ 1.5 W/kg, perform a third repeated measurement.

<Tablet Mode>

Band	Mode	Test Position	Ch.	Original Measured SAR-1g (W/kg)	1st Repeated SAR-1g (W/kg)	L/S Ratio	2nd Repeated SAR-1g (W/kg)	L/S Ratio	3rd Repeated SAR-1g (W/kg)	L/S Ratio
WLAN2.4G	802.11b	Rear Face	1	1.34	1.31	1.02	N/A	N/A	N/A	N/A
WLAN5.3G	802.11ac VHT80	Rear Face	58	1.09	1.05	1.04	N/A	N/A	N/A	N/A
WLAN5.6G	802.11ac VHT80	Rear Face	106	1.17	1.15	1.02	N/A	N/A	N/A	N/A

4.7.4 Simultaneous Multi-band Transmission Evaluation

<Possibilities of Simultaneous Transmission>

The simultaneous transmission possibilities for this device are listed as below.

Simultaneous TX Combination	Capable Transmit Configurations	Body Exposure Condition
1	WLAN 2.4G Ant-1 + BT	Yes
2	WLAN 5G Ant-1 + BT	Yes
3	WLAN 5G (MIMO) + BT	Yes

Note : The WLAN 2.4G and WLAN 5G cannot transmit simultaneously.

<Estimated SAR Calculation>

According to KDB 447498 D01, when standalone SAR test exclusion applies to an antenna that transmits simultaneously with other antennas, the standalone SAR was estimated according to following formula to result in substantially conservative SAR values of ≤ 0.4 W/kg to determine simultaneous transmission SAR test exclusion.

$$\text{Estimated SAR} = \frac{\text{Max. Tune up Power}_{(mW)}}{\text{Min. Test Separation Distance}_{(mm)}} \times \frac{\sqrt{f_{(GHz)}}}{7.5}$$

If the minimum test separation distance is < 5 mm, a distance of 5 mm is used for estimated SAR calculation. When the test separation distance is > 50 mm, the 0.4 W/kg is used for SAR-1g.

Mode / Band	Frequency (GHz)	Max. Tune-up Power (dBm)	Test Position	Separation Distance (mm)	Estimated SAR (W/kg)
WLAN (DTS)	2.462	16.0	Body	0	0.40
WLAN (NII)	5.2	17.0	Body	0	0.40
WLAN (NII)	5.3	17.0	Body	0	0.40
WLAN (NII)	5.6	17.0	Body	0	0.40
WLAN (NII)	5.8	17.0	Body	0	0.40
BT (DSS)	2.48	10.5	Body	0	0.40

Note:

1. The separation distance is determined from the outer housing of the EUT to the user.
2. When standalone SAR testing is not required, an estimated SAR can be applied to determine simultaneous transmission SAR test exclusion.

FCC SAR Test Report

<SAR Summation Analysis>

Simultaneous transmission SAR test exclusion is determined for each operating configuration and exposure condition according to the reported standalone SAR of each applicable simultaneous transmitting antenna. When the sum of SAR_{1g} of all simultaneously transmitting antennas in an operating mode and exposure condition combination is within the SAR limit (SAR_{1g} 1.6 W/kg), the simultaneous transmission SAR is not required. When the sum of SAR_{1g} is greater than the SAR limit (SAR_{1g} 1.6 W/kg), SAR test exclusion is determined by the SPLSR.

<Tablet Mode>

No.	Conditions (SAR1 + SAR2)	Exposure Condition	Test Position	Max. SAR1	Max. SAR2	SAR Summation	SPLSR Analysis
1	WLAN (DTS) Ant 1 + BT (DSS)	Body	Rear Face	1.38	0.21	1.59	Σ SAR < 1.6, Not required
			Left Side	0.40	0.40	0.80	Σ SAR < 1.6, Not required
			Right Side	0.00	0.00	0.00	Σ SAR < 1.6, Not required
			Top Side	0.54	0.05	0.59	Σ SAR < 1.6, Not required
			Bottom Side	0.40	0.40	0.80	Σ SAR < 1.6, Not required
2	WLAN (NII) + BT (DSS)	Body	Rear Face	1.19	0.21	1.40	Σ SAR < 1.6, Not required
			Left Side	0.40	0.40	0.80	Σ SAR < 1.6, Not required
			Right Side	0.29	0.00	0.29	Σ SAR < 1.6, Not required
			Top Side	0.54	0.05	0.59	Σ SAR < 1.6, Not required
			Bottom Side	0.40	0.40	0.80	Σ SAR < 1.6, Not required

<Laptop Mode>

No.	Conditions (SAR1 + SAR2)	Exposure Condition	Test Position	Max. SAR1	Max. SAR2	SAR Summation	SPLSR Analysis
3	WLAN (DTS) Ant 1 + BT (DSS)	Body	Bottom	0.00	0.00	0.00	Σ SAR < 1.6, Not required
			Back of Panel	0.05	0.00	0.05	Σ SAR < 1.6, Not required
			Top Side of Panel	0.00	0.00	0.00	Σ SAR < 1.6, Not required
4	WLAN (NII) + BT (DSS)	Body	Bottom	0.00	0.00	0.00	Σ SAR < 1.6, Not required
			Back of Panel	0.11	0.00	0.11	Σ SAR < 1.6, Not required
			Top Side of Panel	0.00	0.00	0.00	Σ SAR < 1.6, Not required

Test Engineer : Eric Wu, and Mars Chang

5. Calibration of Test Equipment

Equipment	Manufacturer	Model	SN	Cal. Date	Cal. Interval
System Validation Dipole	SPEAG	D2450V2	737	Aug. 24, 2018	1 Year
System Validation Dipole	SPEAG	D5GHzV2	1145	Nov. 06, 2018	1 Year
Dosimetric E-Field Probe	SPEAG	EX3DV4	3898	Jun. 26, 2018	1 Year
Dosimetric E-Field Probe	SPEAG	EX3DV4	3820	Jun. 26, 2018	1 Year
Dosimetric E-Field Probe	SPEAG	EX3DV4	3971	Mar. 29, 2019	1 Year
Dosimetric E-Field Probe	SPEAG	EX3DV4	3650	Jul. 27, 2018	1 Year
Data Acquisition Electronics	SPEAG	DAE3	579	Aug. 27, 2018	1 Year
Data Acquisition Electronics	SPEAG	DAE4	861	May. 30, 2018	1 Year
Data Acquisition Electronics	SPEAG	DAE4	910	Jun. 21, 2018	1 Year
Data Acquisition Electronics	SPEAG	DAE4	905	Jun. 26, 2018	1 Year
Data Acquisition Electronics	SPEAG	DAE4	1431	Mar. 19, 2019	1 Year
Spectrum Analyzer	Anritsu	MS2720T	1513085	May. 29, 2018	1 Year
ENA Series Network Analyzer	Agilent	E5071C	MY46214281	Jun. 08, 2018	1 Year
MXG Analog Signal Generator	Agilent	N5181A	MY50143868	Jul. 03, 2018	1 Year
Power Meter	Anritsu	ML2495A	1218009	Jul. 03, 2018	1 Year
Power Sensor	Anritsu	MA2411B	1207252	Jul. 03, 2018	1 Year
Thermometer	YFE	YF-160A	120702365	Aug. 07, 2018	1 Year

6. Measurement Uncertainty

According to KDB 865664 D01, SAR measurement uncertainty analysis is required in SAR reports only when the highest measured SAR in a frequency band is ≥ 1.5 W/kg for 1-g SAR, and ≥ 3.75 W/kg for 10-g SAR. The procedures described in IEEE Std 1528-2013 should be applied. The expanded SAR measurement uncertainty must be ≤ 30 %, for a confidence interval of $k = 2$. When the highest measured SAR within a frequency band is < 1.5 W/kg for 1-g and < 3.75 W/kg for 10-g, the extensive SAR measurement uncertainty analysis described in IEEE Std 1528-2013 is not required in SAR reports submitted for equipment approval. Hence, the measurement uncertainty analysis is not required in this SAR report because the test result met the condition.

7. Information of the Testing Laboratories

We, Bureau Veritas Consumer Products Services (H.K.) Ltd., Taoyuan Branch, were founded in 1988 to provide our best service in EMC, Radio, Telecom and Safety consultation. Our laboratories are accredited and approved according to ISO/IEC 17025.

If you have any comments, please feel free to contact us at the following:

Taiwan HwaYa EMC/RF/Safety Lab:

Add: No. 19, Hwa Ya 2nd Rd, Wen Hwa Vil., Kwei Shan Hsiang, Taoyuan Hsien 333, Taiwan, R.O.C.

Tel: 886-3-318-3232

Fax: 886-3-327-0892

Taiwan LinKo EMC/RF Lab:

Add: No. 47-2, 14th Ling, Chia Pau Vil., Linkou Dist., New Taipei City 244, Taiwan, R.O.C.

Tel: 886-2-2605-2180

Fax: 886-2-2605-1924

Taiwan HsinChu EMC/RF/Telecom Lab:

Add: E-2, No.1, Li Hsin 1st Road, Hsinchu Science Park, Hsinchu City 30078, Taiwan, R.O.C.

Tel: 886-3-666-8565

Fax: 886-3-666-8323

Email: service.adt@tw.bureauveritas.com

Web Site: www.bureauveritas-adt.com

The road map of all our labs can be found in our web site also.

---END---



Appendix A. SAR Plots of System Verification

The plots for system verification with largest deviation for each SAR system combination are shown as follows.

System Check_H2450_190403

DUT: Dipole 2450 MHz; Type: D2450V2; SN: 737

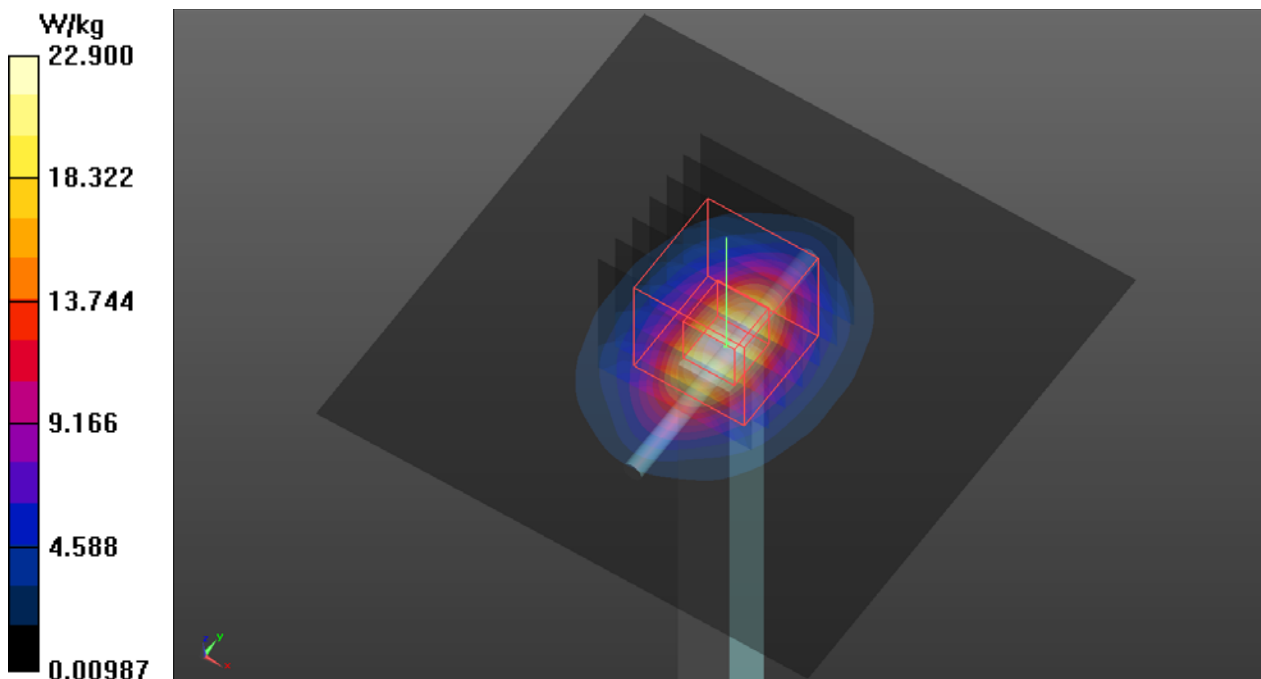
Communication System: CW; Frequency: 2450 MHz; Duty Cycle: 1:1
Medium: H19T27N1_0403 Medium parameters used: $f = 2450$ MHz; $\sigma = 1.88$ S/m; $\epsilon_r = 38.449$; $\rho = 1000$ kg/m³
Ambient Temperature : 23.6 °C ; Liquid Temperature : 23.1 °C

DASY5 Configuration:

- Probe: EX3DV4 - SN3898; ConvF(7.59, 7.59, 7.59); Calibrated: 2018/06/26
- Sensor-Surface: 1.4mm (Mechanical Surface Detection)
- Electronics: DAE4 Sn905; Calibrated: 2018/06/26
- Phantom: ELI Phantom_1245; Type: QDOVA002AA;
- Measurement SW: DASY52, Version 52.10 (2); SEMCAD X Version 14.6.12 (7450)

Pin=250mW/Area Scan (81x81x1): Interpolated grid: dx=1.200 mm, dy=1.200 mm
Maximum value of SAR (interpolated) = 22.9 W/kg

Pin=250mW/Zoom Scan (7x7x7)/Cube 0: Measurement grid: dx=5mm, dy=5mm, dz=5mm
Reference Value = 107.0 V/m; Power Drift = 0.01 dB
Peak SAR (extrapolated) = 28.6 W/kg
SAR(1 g) = 13.4 W/kg; SAR(10 g) = 6.1 W/kg
Maximum value of SAR (measured) = 23.0 W/kg



System Check_H5250_190403

DUT: Dipole 5 GHz; Type: D5GHzV2; SN: 1145

Communication System: CW; Frequency: 5250 MHz; Duty Cycle: 1:1

Medium: H34T60N3_0403 Medium parameters used: $f = 5250$ MHz; $\sigma = 4.78$ S/m; $\epsilon_r = 35.347$; $\rho = 1000$ kg/m³

Ambient Temperature : 23.7 °C ; Liquid Temperature : 23.4 °C

DASY5 Configuration:

- Probe: EX3DV4 - SN3820; ConvF(4.6, 4.6, 4.6); Calibrated: 2018/06/26
- Sensor-Surface: 1.4mm (Mechanical Surface Detection)
- Electronics: DAE4 Sn910; Calibrated: 2018/06/21
- Phantom: ELI Phantom_1039; Type: QDOVA001BB;
- Measurement SW: DASY52, Version 52.10 (2); SEMCAD X Version 14.6.12 (7450)

Pin=100mW/Area Scan (91x91x1): Interpolated grid: dx=1.000 mm, dy=1.000 mm

Maximum value of SAR (interpolated) = 18.6 W/kg

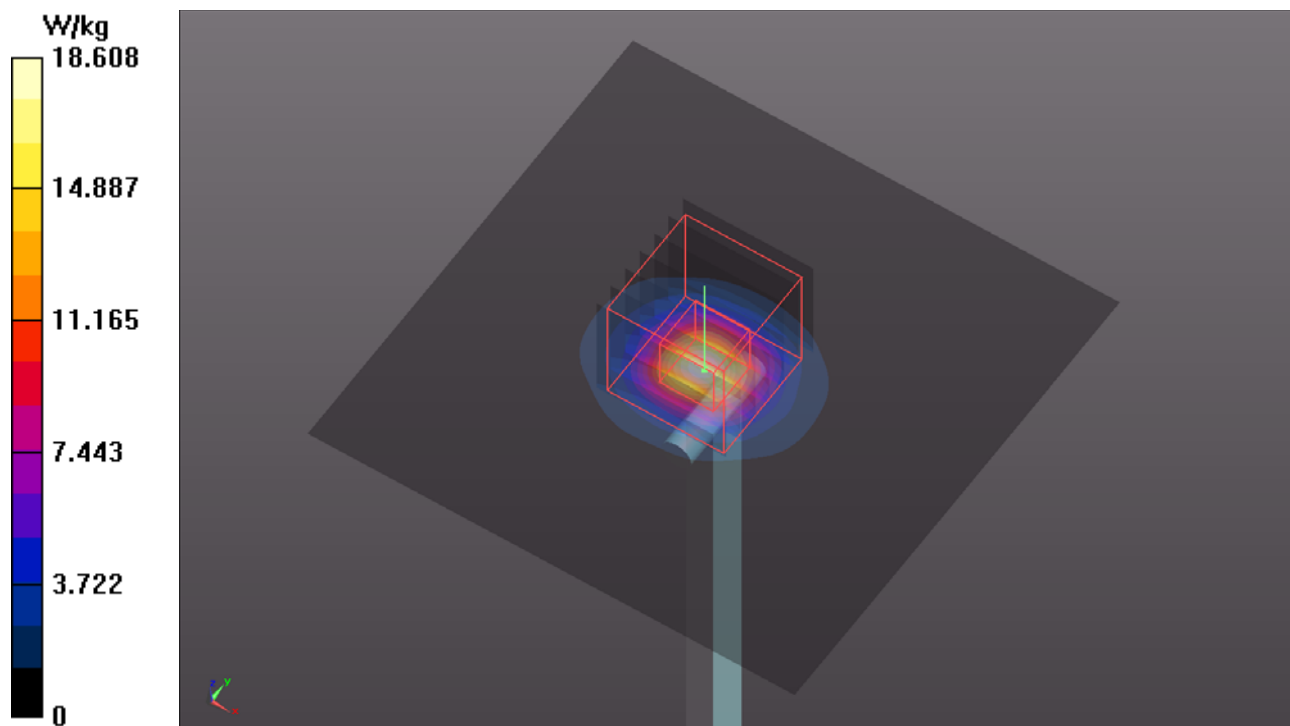
Pin=100mW/Zoom Scan (7x7x12)/Cube 0: Measurement grid: dx=4mm, dy=4mm, dz=2mm

Reference Value = 70.99 V/m; Power Drift = 0.04 dB

Peak SAR (extrapolated) = 35.1 W/kg

SAR(1 g) = 8.07 W/kg; SAR(10 g) = 2.31 W/kg

Maximum value of SAR (measured) = 20.7 W/kg



System Check_H5600_190403

DUT: Dipole 5 GHz; Type: D5GHzV2; SN: 1145

Communication System: CW; Frequency: 5600 MHz; Duty Cycle: 1:1

Medium: H34T60N3_0403 Medium parameters used: $f = 5600$ MHz; $\sigma = 5.159$ S/m; $\epsilon_r = 34.746$; $\rho = 1000$ kg/m³

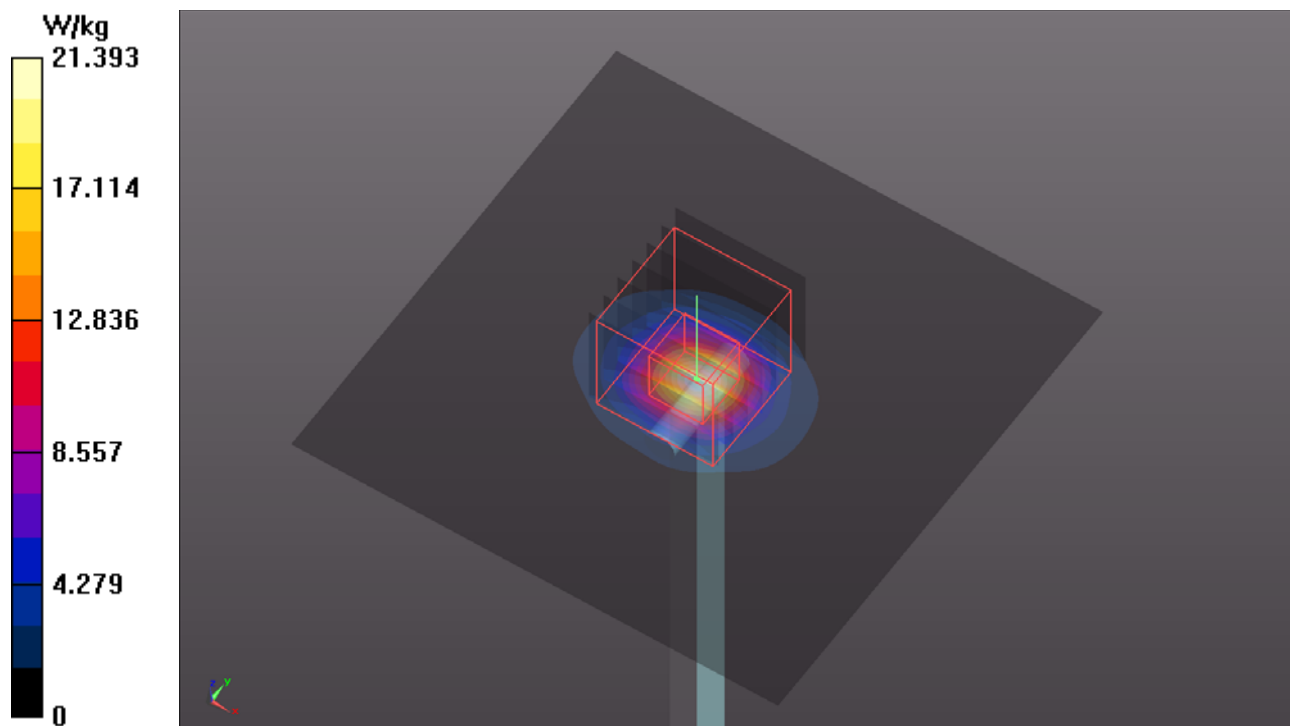
Ambient Temperature : 23.7 °C ; Liquid Temperature : 23.4 °C

DASY5 Configuration:

- Probe: EX3DV4 - SN3820; ConvF(4.5, 4.5, 4.5); Calibrated: 2018/06/26
- Sensor-Surface: 1.4mm (Mechanical Surface Detection)
- Electronics: DAE4 Sn910; Calibrated: 2018/06/21
- Phantom: ELI Phantom_1039; Type: QDOVA001BB;
- Measurement SW: DASY52, Version 52.10 (2); SEMCAD X Version 14.6.12 (7450)

Pin=100mW/Area Scan (91x91x1): Interpolated grid: dx=1.000 mm, dy=1.000 mm
Maximum value of SAR (interpolated) = 21.4 W/kg

Pin=100mW/Zoom Scan (7x7x12)/Cube 0: Measurement grid: dx=4mm, dy=4mm, dz=2mm
Reference Value = 76.55 V/m; Power Drift = -0.15 dB
Peak SAR (extrapolated) = 37.6 W/kg
SAR(1 g) = 8.5 W/kg; SAR(10 g) = 2.41 W/kg
Maximum value of SAR (measured) = 22.2 W/kg



System Check_H5750_190416

DUT: Dipole 5 GHz; Type: D5GHzV2; SN: 1145

Communication System: CW; Frequency: 5750 MHz; Duty Cycle: 1:1

Medium: H34T60N1_0416 Medium parameters used: $f = 5750$ MHz; $\sigma = 5.348$ S/m; $\epsilon_r = 35.482$; $\rho = 1000$ kg/m³

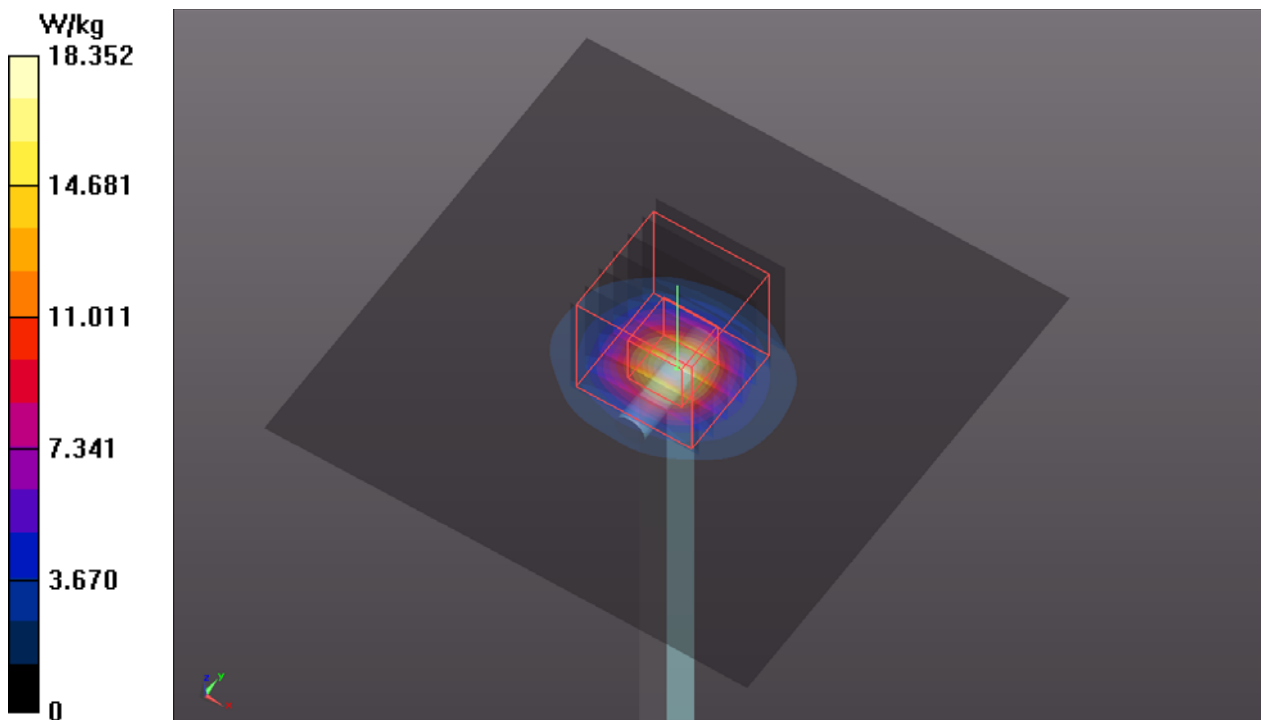
Ambient Temperature : 23.5 °C ; Liquid Temperature : 23.2 °C

DASY5 Configuration:

- Probe: EX3DV4 - SN3898; ConvF(5.09, 5.09, 5.09); Calibrated: 2018/06/26
- Sensor-Surface: 1.4mm (Mechanical Surface Detection)
- Electronics: DAE4 Sn861; Calibrated: 2018/05/30
- Phantom: ELI Phantom_1206; Type: QDOVA002AA;
- Measurement SW: DASY52, Version 52.10 (2); SEMCAD X Version 14.6.12 (7450)

Pin=100mW/Area Scan (91x91x1): Interpolated grid: dx=1.000 mm, dy=1.000 mm
Maximum value of SAR (interpolated) = 18.4 W/kg

Pin=100mW/Zoom Scan (7x7x12)/Cube 0: Measurement grid: dx=4mm, dy=4mm, dz=2mm
Reference Value = 58.27 V/m; Power Drift = -0.18 dB
Peak SAR (extrapolated) = 35.2 W/kg
SAR(1 g) = 7.56 W/kg; SAR(10 g) = 2.15 W/kg
Maximum value of SAR (measured) = 19.9 W/kg



Appendix B. SAR Plots of SAR Measurement

The SAR plots for highest measured SAR in each exposure configuration, wireless mode and frequency band combination, and measured SAR > 1.5 W/kg are shown as follows.

P01 WLAN2.4G_802.11b_Rear Face_0mm_Ch1_Ant1

DUT: 190326C25

Communication System: WLAN_2.4G; Frequency: 2412 MHz; Duty Cycle: 1:1.01
Medium: H19T27N1_0403 Medium parameters used: $f = 2412$ MHz; $\sigma = 1.841$ S/m; $\epsilon_r = 38.597$; $\rho = 1000$ kg/m³
Ambient Temperature : 23.6 °C ; Liquid Temperature : 23.1 °C

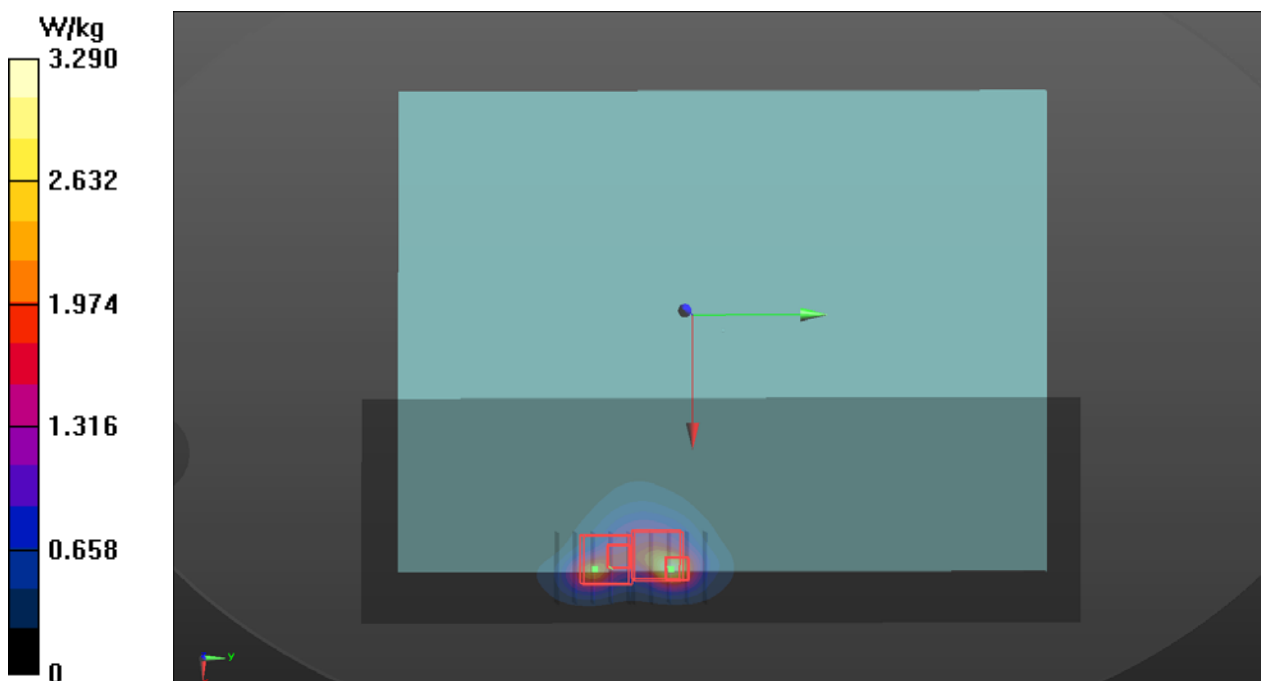
DASY5 Configuration:

- Probe: EX3DV4 - SN3898; ConvF(7.59, 7.59, 7.59); Calibrated: 2018/06/26
- Sensor-Surface: 1.4mm (Mechanical Surface Detection)
- Electronics: DAE4 Sn905; Calibrated: 2018/06/26
- Phantom: ELI Phantom_1245; Type: QDOVA002AA;
- Measurement SW: DASY52, Version 52.10 (2); SEMCAD X Version 14.6.12 (7450)

- **Area Scan (91x271x1):** Interpolated grid: dx=1.200 mm, dy=1.200 mm
Maximum value of SAR (interpolated) = 3.29 W/kg

- **Zoom Scan (5x5x7)/Cube 1:** Measurement grid: dx=8mm, dy=8mm, dz=5mm
Reference Value = 38.38 V/m; Power Drift = -0.10 dB
Peak SAR (extrapolated) = 3.60 W/kg
SAR(1 g) = 1.34 W/kg; SAR(10 g) = 0.595 W/kg
Maximum value of SAR (measured) = 2.29 W/kg

- **Zoom Scan (5x5x7)/Cube 0:** Measurement grid: dx=8mm, dy=8mm, dz=5mm
Reference Value = 38.38 V/m; Power Drift = -0.10 dB
Peak SAR (extrapolated) = 3.78 W/kg
SAR(1 g) = 1.23 W/kg; SAR(10 g) = 0.616 W/kg
Maximum value of SAR (measured) = 2.45 W/kg



P02 WLAN5.3G_802.11ac VHT80_Rear Face_0mm_Ch58_Ant1

DUT: 190326C25

Communication System: WLAN_5G; Frequency: 5290 MHz; Duty Cycle: 1:1.02

Medium: H34T60N3_0403 Medium parameters used: $f = 5290$ MHz; $\sigma = 4.812$ S/m; $\epsilon_r = 35.274$; $\rho = 1000$ kg/m³

Ambient Temperature : 23.7 °C ; Liquid Temperature : 23.4 °C

DASY5 Configuration:

- Probe: EX3DV4 - SN3820; ConvF(4.6, 4.6, 4.6); Calibrated: 2018/06/26
- Sensor-Surface: 1.4mm (Mechanical Surface Detection)
- Electronics: DAE4 Sn910; Calibrated: 2018/06/21
- Phantom: ELI Phantom_1039; Type: QDOVA001BB;
- Measurement SW: DASY52, Version 52.10 (2); SEMCAD X Version 14.6.12 (7450)

- **Area Scan (101x321x1)**: Interpolated grid: dx=1.000 mm, dy=1.000 mm

Maximum value of SAR (interpolated) = 1.17 W/kg

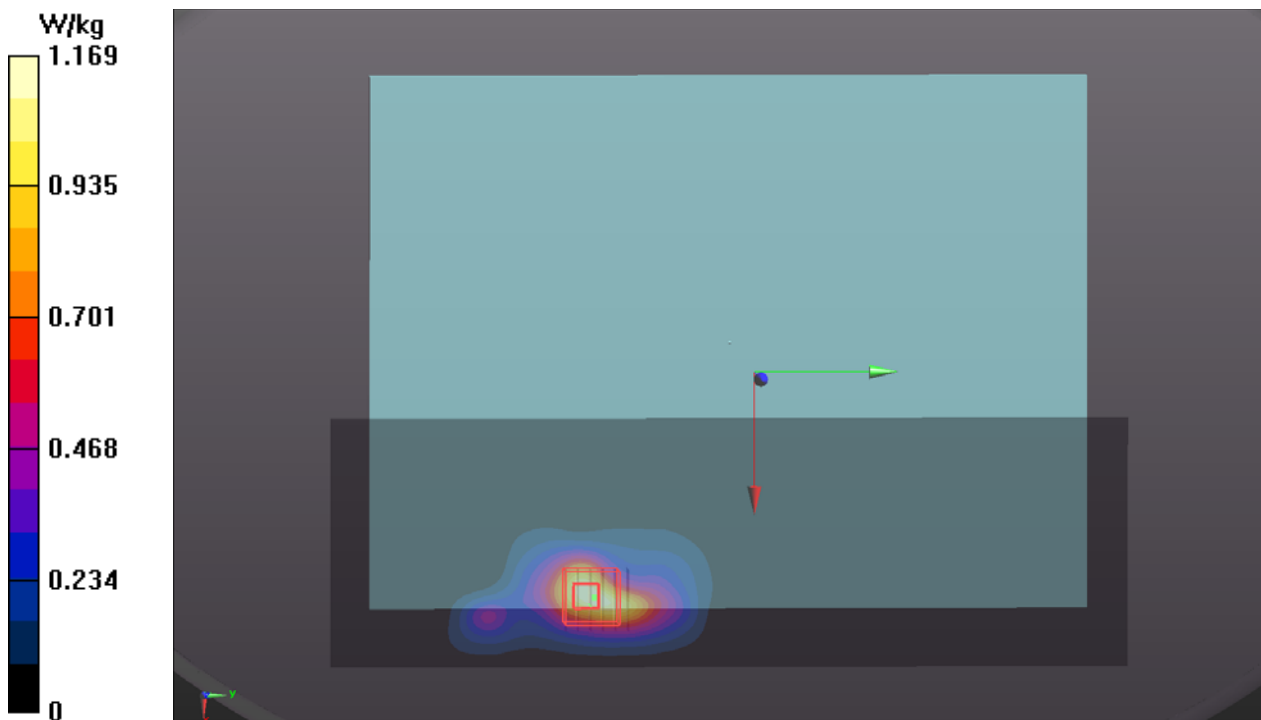
- **Zoom Scan (6x6x12)/Cube 0**: Measurement grid: dx=5mm, dy=5mm, dz=2mm

Reference Value = 14.18 V/m; Power Drift = -0.11 dB

Peak SAR (extrapolated) = 5.20 W/kg

SAR(1 g) = 1.09 W/kg; SAR(10 g) = 0.372 W/kg

Maximum value of SAR (measured) = 2.71 W/kg



P03 WLAN5.6G_802.11ac VHT80_Rear Face_0mm_Ch106_Ant1

DUT: 190326C25

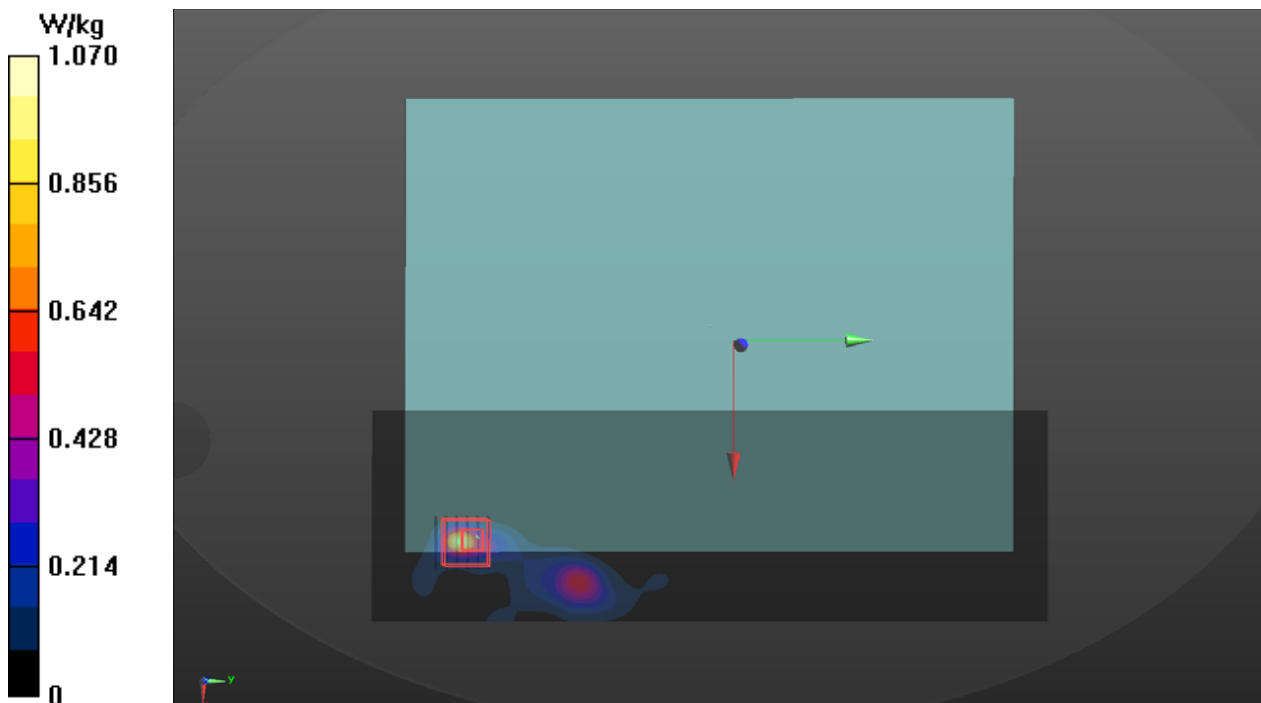
Communication System: WLAN_5G; Frequency: 5530 MHz; Duty Cycle: 1:1.02
Medium: H34T60N3_0401 Medium parameters used: $f = 5530$ MHz; $\sigma = 4.821$ S/m; $\epsilon_r = 35.668$; $\rho = 1000$ kg/m³
Ambient Temperature : 23.6 °C ; Liquid Temperature : 23.3 °C

DASY5 Configuration:

- Probe: EX3DV4 - SN3650; ConvF(5.05, 5.05, 5.05); Calibrated: 2018/7/27
- Sensor-Surface: 1.4mm (Mechanical Surface Detection)
- Electronics: DAE3 Sn579; Calibrated: 2018/8/27
- Phantom: ELI Phantom_1245; Type: QDOVA002AA;
- Measurement SW: DASY52, Version 52.10 (2); SEMCAD X Version 14.6.12 (7450)

- **Area Scan (101x321x1)**: Interpolated grid: dx=1.000 mm, dy=1.000 mm
Maximum value of SAR (interpolated) = 1.07 W/kg

- **Zoom Scan (6x6x12)/Cube 0**: Measurement grid: dx=5mm, dy=5mm, dz=2mm
Reference Value = 15.41 V/m; Power Drift = -0.07 dB
Peak SAR (extrapolated) = 7.36 W/kg
SAR(1 g) = 1.17 W/kg; SAR(10 g) = 0.202 W/kg
Maximum value of SAR (measured) = 3.72 W/kg



P04 WLAN5.8G_802.11ac VHT80_Rear Face_0mm_Ch155_Ant1

DUT: 190326C25

Communication System: WLAN_5G; Frequency: 5775 MHz; Duty Cycle: 1:1.02

Medium: H34T60N3_0401 Medium parameters used: $f = 5775$ MHz; $\sigma = 5.06$ S/m; $\epsilon_r = 35.326$; $\rho = 1000$ kg/m³

Ambient Temperature : 23.6 °C ; Liquid Temperature : 23.3 °C

DASY5 Configuration:

- Probe: EX3DV4 - SN3650; ConvF(5.33, 5.33, 5.33); Calibrated: 2018/07/27
- Sensor-Surface: 1.4mm (Mechanical Surface Detection)
- Electronics: DAE3 Sn579; Calibrated: 2018/08/27
- Phantom: ELI Phantom_1245; Type: QDOVA002AA;
- Measurement SW: DASY52, Version 52.10 (2); SEMCAD X Version 14.6.12 (7450)

- **Area Scan (101x321x1)**: Interpolated grid: dx=1.000 mm, dy=1.000 mm

Maximum value of SAR (interpolated) = 1.63 W/kg

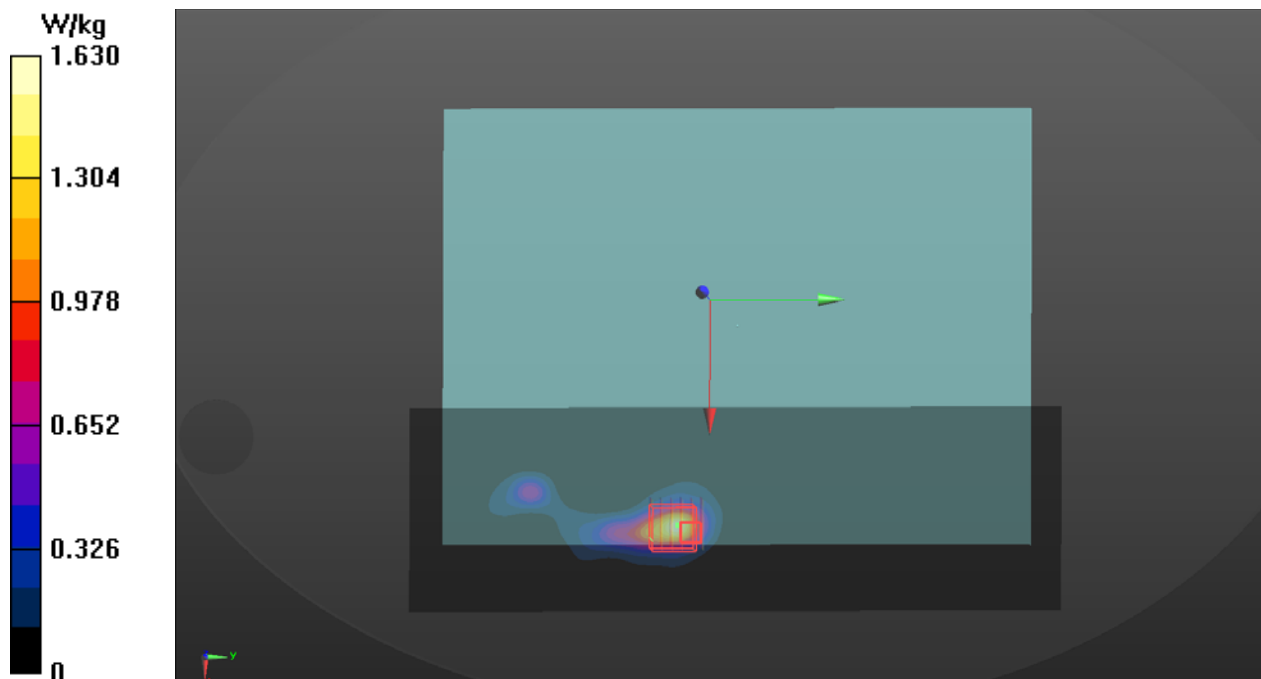
- **Zoom Scan (6x6x12)/Cube 0**: Measurement grid: dx=5mm, dy=5mm, dz=2mm

Reference Value = 17.16 V/m; Power Drift = -0.12 dB

Peak SAR (extrapolated) = 3.11 W/kg

SAR(1 g) = 0.413 W/kg; SAR(10 g) = 0.133 W/kg

Maximum value of SAR (measured) = 1.36 W/kg



P05 BT_BDR_Rear Face_0mm_Ch0_Ant0

DUT: 190326C25

Communication System: BT; Frequency: 2402 MHz; Duty Cycle: 1:1.31
Medium: H19T27N3_0401 Medium parameters used: $f = 2402$ MHz; $\sigma = 1.83$ S/m; $\epsilon = 39.277$; $\rho = 1000$ kg/m³
Ambient Temperature : 23.8 °C ; Liquid Temperature : 23.2 °C

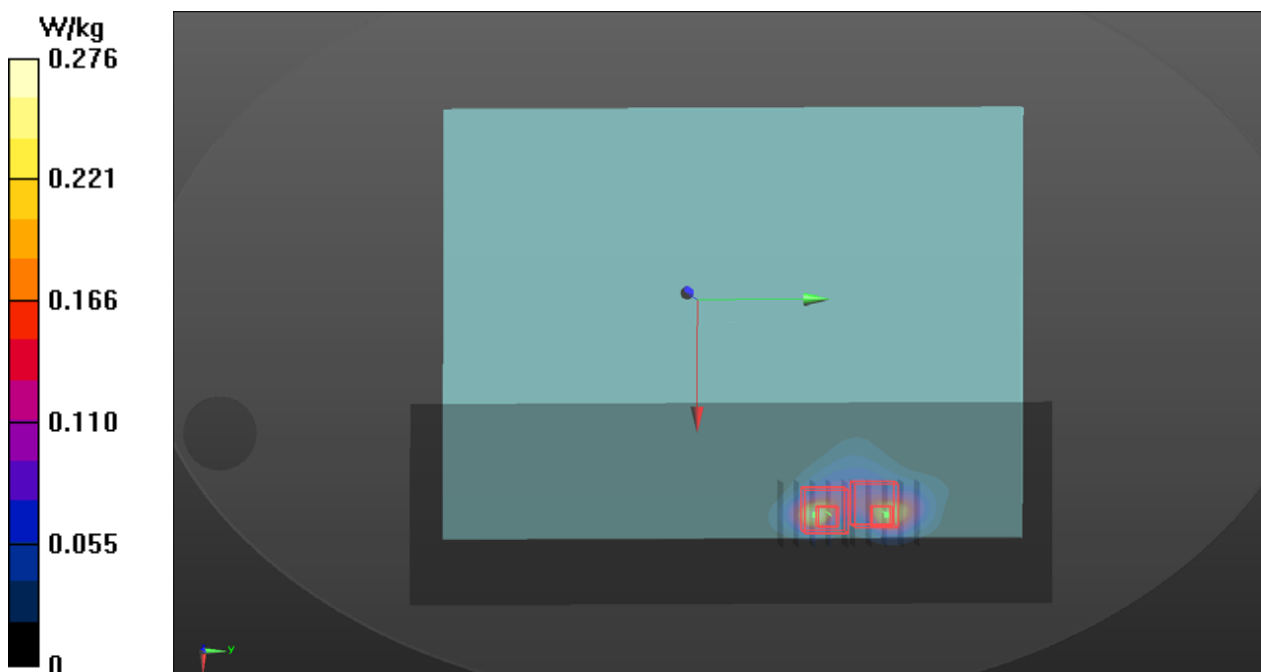
DASY5 Configuration:

- Probe: EX3DV4 - SN3650; ConvF(7.64, 7.64, 7.64); Calibrated: 2018/07/27
- Sensor-Surface: 1.4mm (Mechanical Surface Detection)
- Electronics: DAE3 Sn579; Calibrated: 2018/08/27
- Phantom: ELI Phantom_1245; Type: QDOVA002AA;
- Measurement SW: DASY52, Version 52.10 (2); SEMCAD X Version 14.6.12 (7450)

- **Area Scan (91x271x1):** Interpolated grid: dx=1.200 mm, dy=1.200 mm
Maximum value of SAR (interpolated) = 0.276 W/kg

- **Zoom Scan (5x5x7)/Cube 1:** Measurement grid: dx=8mm, dy=8mm, dz=5mm
Reference Value = 11.00 V/m; Power Drift = -0.13 dB
Peak SAR (extrapolated) = 0.419 W/kg
SAR(1 g) = 0.125 W/kg; SAR(10 g) = 0.051 W/kg
Maximum value of SAR (measured) = 0.311 W/kg

- **Zoom Scan (5x5x7)/Cube 0:** Measurement grid: dx=8mm, dy=8mm, dz=5mm
Reference Value = 11.00 V/m; Power Drift = -0.13 dB
Peak SAR (extrapolated) = 0.277 W/kg
SAR(1 g) = 0.104 W/kg; SAR(10 g) = 0.047 W/kg
Maximum value of SAR (measured) = 0.201 W/kg



P06 WLAN2.4G_802.11b_Back of Pannel_25mm_Ch6_Ant0

DUT: 190326C25

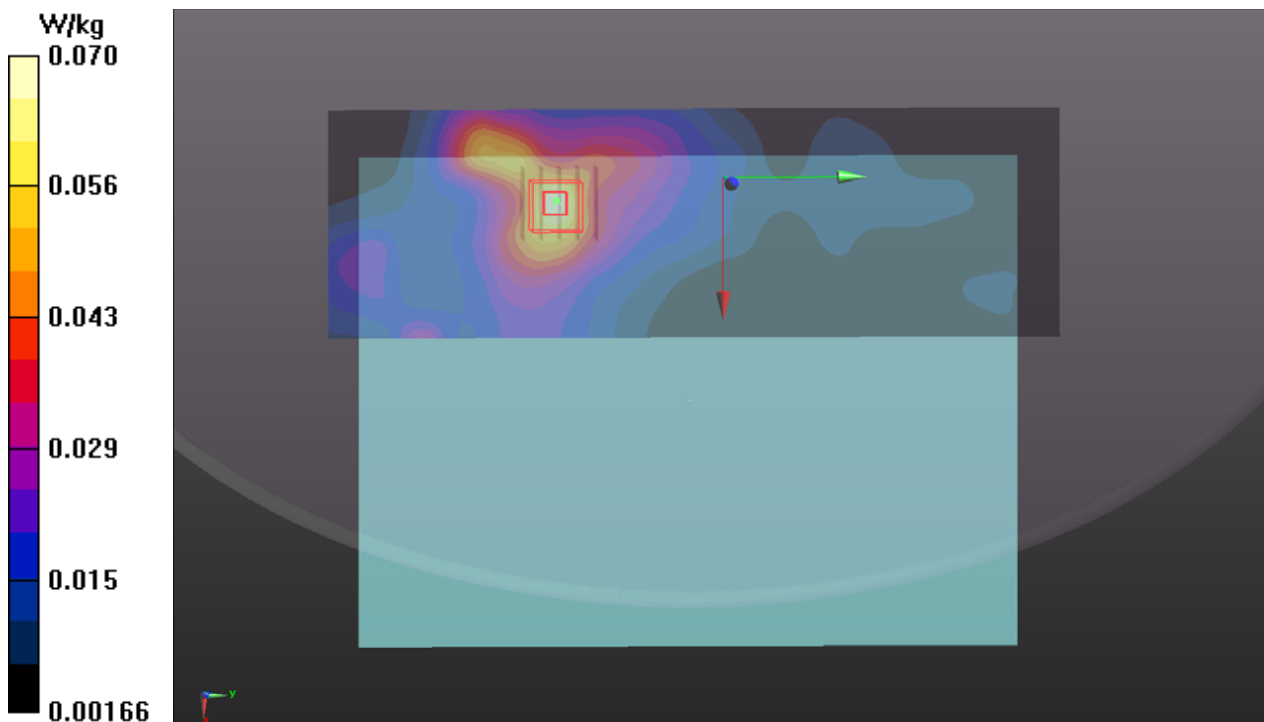
Communication System: WLAN_2.4G; Frequency: 2437 MHz; Duty Cycle: 1:1.01
Medium: H19T27N1_0416 Medium parameters used: $f = 2437$ MHz; $\sigma = 1.816$ S/m; $\epsilon_r = 38.991$; $\rho = 1000$ kg/m³
Ambient Temperature : 23.5 °C ; Liquid Temperature : 23.2 °C

DASY5 Configuration:

- Probe: EX3DV4 - SN3898; ConvF(7.59, 7.59, 7.59); Calibrated: 2018/06/26
- Sensor-Surface: 1.4mm (Mechanical Surface Detection)
- Electronics: DAE4 Sn861; Calibrated: 2018/05/30
- Phantom: ELI Phantom_1206; Type: QDOVA002AA;
- Measurement SW: DASY52, Version 52.10 (2); SEMCAD X Version 14.6.12 (7450)

- **Area Scan (91x221x1):** Interpolated grid: dx=1.200 mm, dy=1.200 mm
Maximum value of SAR (interpolated) = 0.0702 W/kg

- **Zoom Scan (5x5x7)/Cube 0:** Measurement grid: dx=8mm, dy=8mm, dz=5mm
Reference Value = 6.222 V/m; Power Drift = 0.17 dB
Peak SAR (extrapolated) = 0.0930 W/kg
SAR(1 g) = 0.050 W/kg; SAR(10 g) = 0.027 W/kg
Maximum value of SAR (measured) = 0.0783 W/kg



P07 WLAN5.3G_802.11n HT40_Back of Pannel_25mm_Ch54_Ant1

DUT: 190326C25

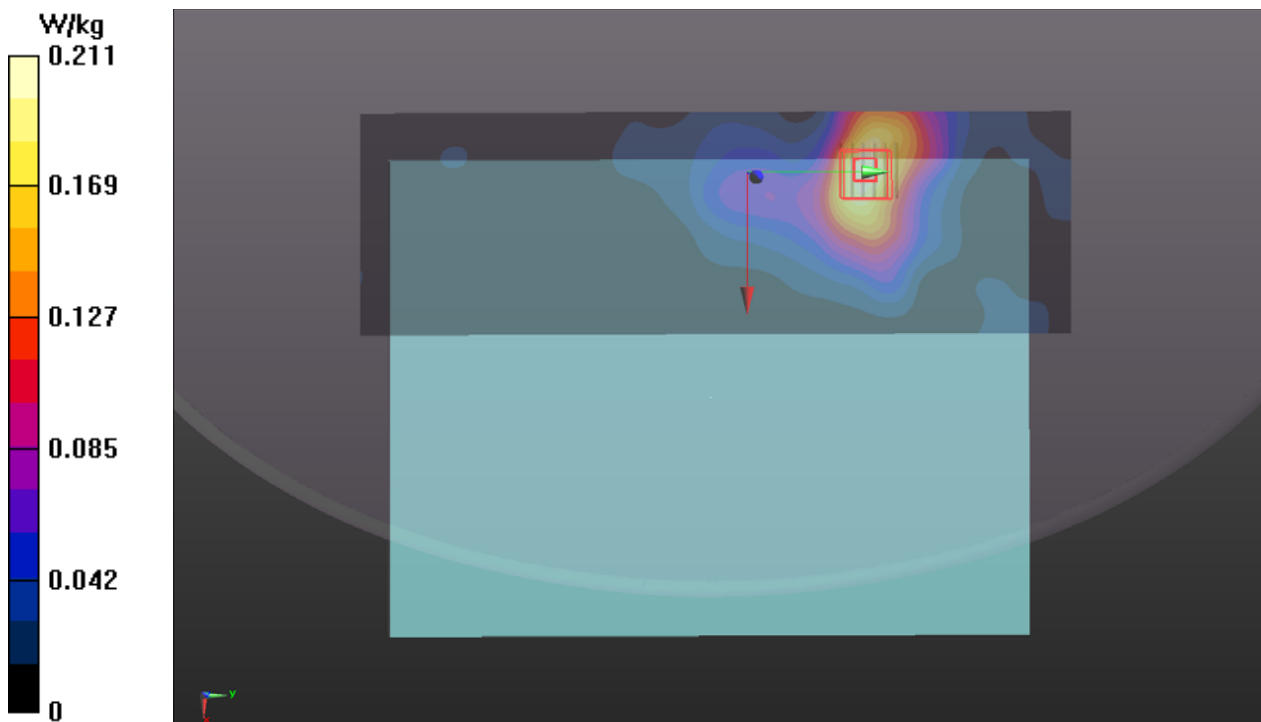
Communication System: WLAN_5G; Frequency: 5270 MHz; Duty Cycle: 1:1.03
Medium: H34T60N1_0416 Medium parameters used: $f = 5270$ MHz; $\sigma = 4.86$ S/m; $\epsilon_r = 36.145$; $\rho = 1000$ kg/m³
Ambient Temperature : 23.5 °C ; Liquid Temperature : 23.2 °C

DASY5 Configuration:

- Probe: EX3DV4 - SN3898; ConvF(5.4, 5.4, 5.4); Calibrated: 2018/06/26
- Sensor-Surface: 1.4mm (Mechanical Surface Detection)
- Electronics: DAE4 Sn861; Calibrated: 2018/05/30
- Phantom: ELI Phantom_1206; Type: QDOVA002AA;
- Measurement SW: DASY52, Version 52.10 (2); SEMCAD X Version 14.6.12 (7450)

- **Area Scan (101x321x1):** Interpolated grid: dx=1.000 mm, dy=1.000 mm
Maximum value of SAR (interpolated) = 0.211 W/kg

- **Zoom Scan (6x6x12)/Cube 0:** Measurement grid: dx=5mm, dy=5mm, dz=2mm
Reference Value = 6.847 V/m; Power Drift = -0.11 dB
Peak SAR (extrapolated) = 0.480 W/kg
SAR(1 g) = 0.100 W/kg; SAR(10 g) = 0.043 W/kg
Maximum value of SAR (measured) = 0.199 W/kg



P08 WLAN5.6G_802.11ac VHT80_Back of Pannel_25mm_Ch138_Ant0

DUT: 190326C25

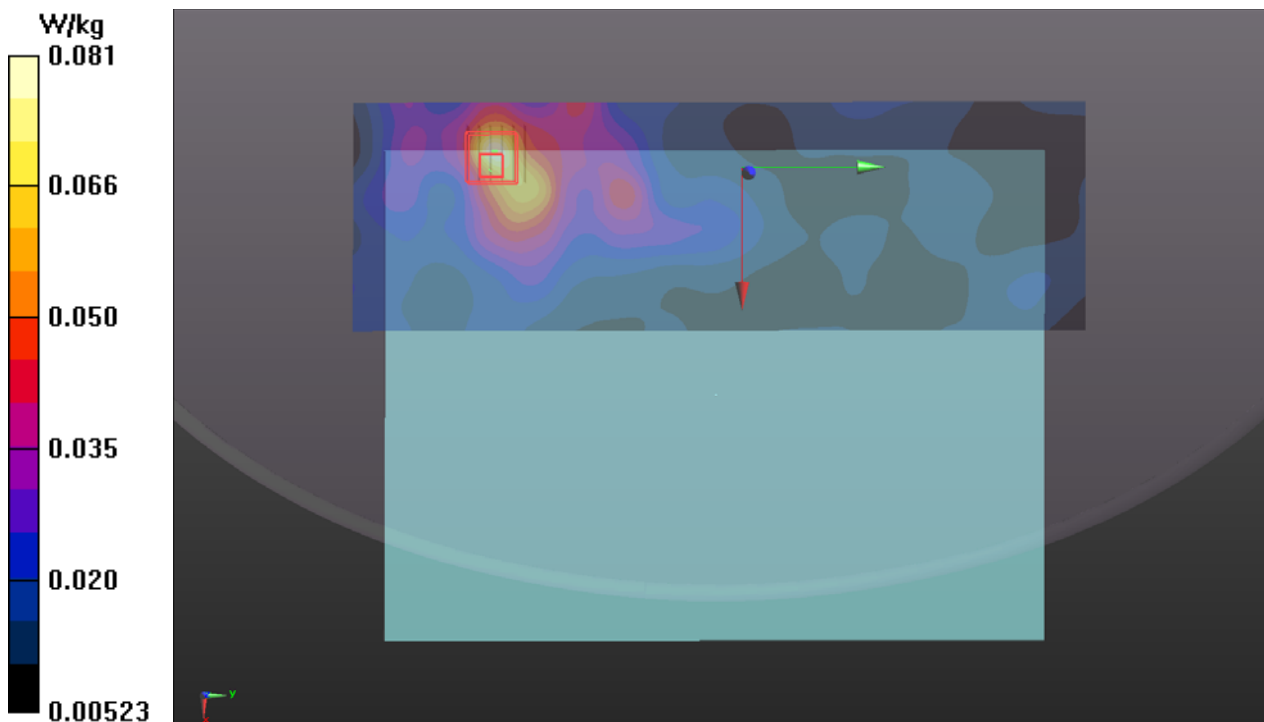
Communication System: WLAN_5G; Frequency: 5690 MHz; Duty Cycle: 1:1.02
Medium: H34T60N1_0416 Medium parameters used: $f = 5690$ MHz; $\sigma = 5.247$ S/m; $\epsilon_r = 35.33$; $\rho = 1000$ kg/m³
Ambient Temperature : 23.5 °C ; Liquid Temperature : 23.2 °C

DASY5 Configuration:

- Probe: EX3DV4 - SN3898; ConvF(5.09, 5.09, 5.09); Calibrated: 2018/06/26
- Sensor-Surface: 1.4mm (Mechanical Surface Detection)
- Electronics: DAE4 Sn861; Calibrated: 2018/05/30
- Phantom: ELI Phantom_1206; Type: QDOVA002AA;
- Measurement SW: DASY52, Version 52.10 (2); SEMCAD X Version 14.6.12 (7450)

- **Area Scan (101x321x1)**: Interpolated grid: dx=1.000 mm, dy=1.000 mm
Maximum value of SAR (interpolated) = 0.0807 W/kg

- **Zoom Scan (6x6x12)/Cube 0**: Measurement grid: dx=5mm, dy=5mm, dz=2mm
Reference Value = 4.262 V/m; Power Drift = -0.14 dB
Peak SAR (extrapolated) = 0.222 W/kg
SAR(1 g) = 0.037 W/kg; SAR(10 g) = 0.015 W/kg
Maximum value of SAR (measured) = 0.0762 W/kg



P09 WLAN5.8G_802.11n HT40_Back of Pannel_25mm_Ch159_Ant0

DUT: 190326C25

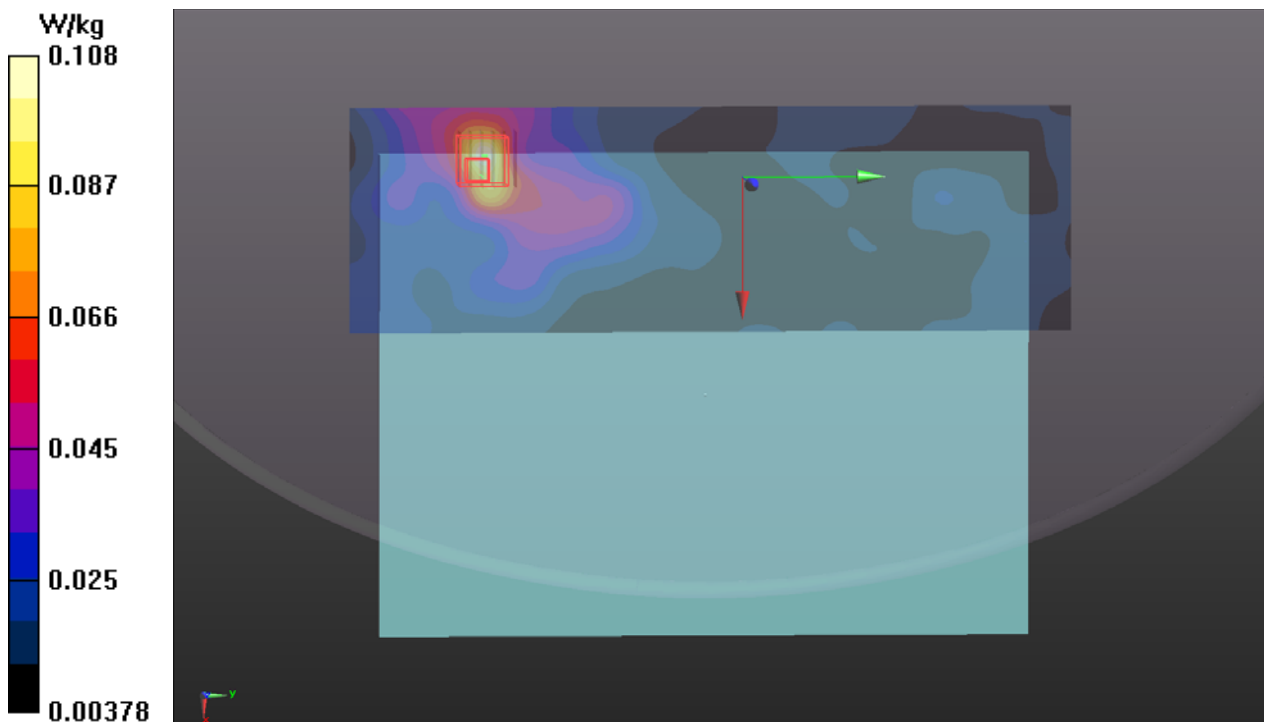
Communication System: WLAN_5G; Frequency: 5795 MHz; Duty Cycle: 1:1.03
Medium: H34T60N1_0416 Medium parameters used: $f = 5795$ MHz; $\sigma = 5.353$ S/m; $\epsilon_r = 35.266$; $\rho = 1000$ kg/m³
Ambient Temperature : 23.5 °C ; Liquid Temperature : 23.2 °C

DASY5 Configuration:

- Probe: EX3DV4 - SN3898; ConvF(5.09, 5.09, 5.09); Calibrated: 2018/06/26
- Sensor-Surface: 1.4mm (Mechanical Surface Detection)
- Electronics: DAE4 Sn861; Calibrated: 2018/05/30
- Phantom: ELI Phantom_1206; Type: QDOVA002AA;
- Measurement SW: DASY52, Version 52.10 (2); SEMCAD X Version 14.6.12 (7450)

- **Area Scan (101x321x1):** Interpolated grid: dx=1.000 mm, dy=1.000 mm
Maximum value of SAR (interpolated) = 0.108 W/kg

- **Zoom Scan (6x6x12)/Cube 0:** Measurement grid: dx=5mm, dy=5mm, dz=2mm
Reference Value = 4.801 V/m; Power Drift = -0.15 dB
Peak SAR (extrapolated) = 0.164 W/kg
SAR(1 g) = 0.050 W/kg; SAR(10 g) = 0.019 W/kg
Maximum value of SAR (measured) = 0.128 W/kg





Appendix C. Calibration Certificate for Probe and Dipole

The SPEAG calibration certificates are shown as follows.



Accredited by the Swiss Accreditation Service (SAS)
The Swiss Accreditation Service is one of the signatories to the EA
Multilateral Agreement for the recognition of calibration certificates

Accreditation No.: **SCS 0108**

Client **B.V. ADT (Auden)**

Certificate No: **D2450V2-737_Aug18**

CALIBRATION CERTIFICATE

Object **D2450V2 - SN:737**

Calibration procedure(s) **QA CAL-05.v10
Calibration procedure for dipole validation kits above 700 MHz**

Calibration date: **August 24, 2018**

This calibration certificate documents the traceability to national standards, which realize the physical units of measurements (SI).
The measurements and the uncertainties with confidence probability are given on the following pages and are part of the certificate.

All calibrations have been conducted in the closed laboratory facility: environment temperature (22 ± 3)°C and humidity < 70%.

Calibration Equipment used (M&TE critical for calibration)

Primary Standards	ID #	Cal Date (Certificate No.)	Scheduled Calibration
Power meter NRP	SN: 104778	04-Apr-18 (No. 217-02672/02673)	Apr-19
Power sensor NRP-Z91	SN: 103244	04-Apr-18 (No. 217-02672)	Apr-19
Power sensor NRP-Z91	SN: 103245	04-Apr-18 (No. 217-02673)	Apr-19
Reference 20 dB Attenuator	SN: 5058 (20k)	04-Apr-18 (No. 217-02682)	Apr-19
Type-N mismatch combination	SN: 5047.2 / 06327	04-Apr-18 (No. 217-02683)	Apr-19
Reference Probe EX3DV4	SN: 7349	30-Dec-17 (No. EX3-7349_Dec17)	Dec-18
DAE4	SN: 601	26-Oct-17 (No. DAE4-601_Oct17)	Oct-18
Secondary Standards	ID #	Check Date (in house)	Scheduled Check
Power meter EPM-442A	SN: GB37480704	07-Oct-15 (in house check Oct-16)	In house check: Oct-18
Power sensor HP 8481A	SN: US37292783	07-Oct-15 (in house check Oct-16)	In house check: Oct-18
Power sensor HP 8481A	SN: MY41092317	07-Oct-15 (in house check Oct-16)	In house check: Oct-18
RF generator R&S SMT-06	SN: 100972	15-Jun-15 (in house check Oct-16)	In house check: Oct-18
Network Analyzer Agilent E8358A	SN: US41080477	31-Mar-14 (in house check Oct-17)	In house check: Oct-18

Calibrated by: **Manu Seitz** **Manu Seitz** **Manu Seitz**
Name Function Signature
Laboratory Technician

Approved by: **Katja Pokovic** **Katja Pokovic**
Technical Manager

Issued: August 24, 2018

This calibration certificate shall not be reproduced except in full without written approval of the laboratory.