

IDP-6XX
Technical Description
Internal Pictures
(IC)

SkyWave File: COMP078-I-010

REVISION	VERSION 1	VERSION2			
DATE	Nov 28,2011	Dec 14,2011			

APPROVALS	TITLE	SIGNATURE	DATE
Doug Reveler	VP Product Management IsatData Pro		

The information contained herein is proprietary to SkyWave
Mobile Communications Inc., and is not to be used or reproduced
without permission.

Table of Contents

1. Introduction1
2. Revision History1
3. IDP-680 Internal Pictures.....2
 3.1. Assembly pictures2
 3.2. Circuit Card Pictures3

1. Introduction

The following document contains internal product pictures required for Industry Canada approval of the IDP-680 and IDP-690 terminals.

The IC number for this submission is 3745A-IDP6XX

2. Revision History

Author	Version	Comment
DR	1.0	Initial version sent to Nemko for comments.
	2	Fix IC number. Label pictures moved to another document

3. IDP-680 Internal Pictures

The following section contains internal pictures of the IDP-680. The internal pictures for the side and bottom connector versions are the same. As per the pictures, in both cases a flex circuit is used to allow the connector to exit on the side or bottom of the terminal.

3.1. Assembly pictures

The following section contains internal pictures of the IDP-680 assembly.

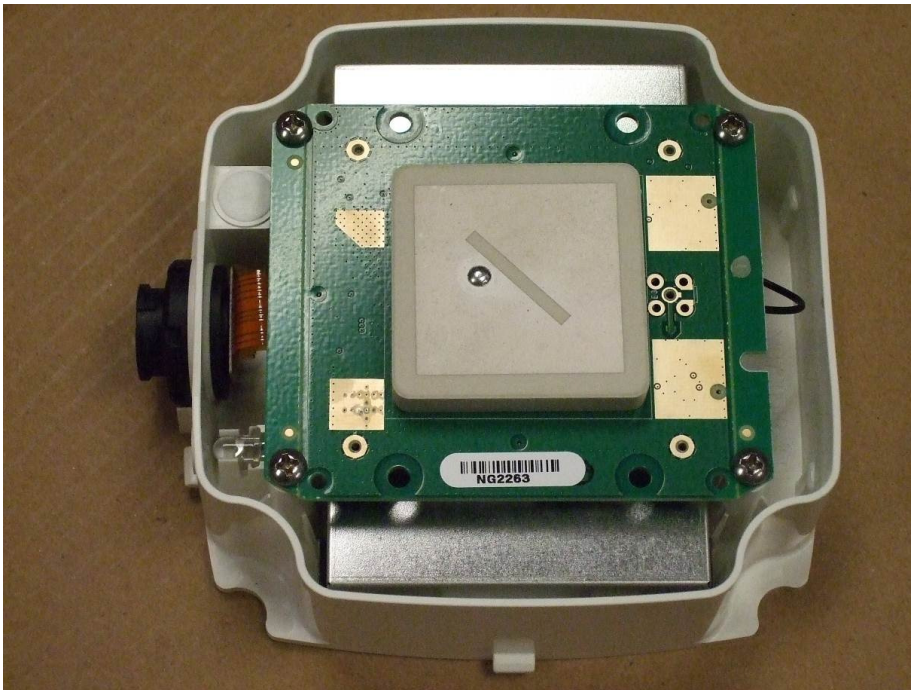


Figure 3-1 IDP-680 Inside View, Antenna Top

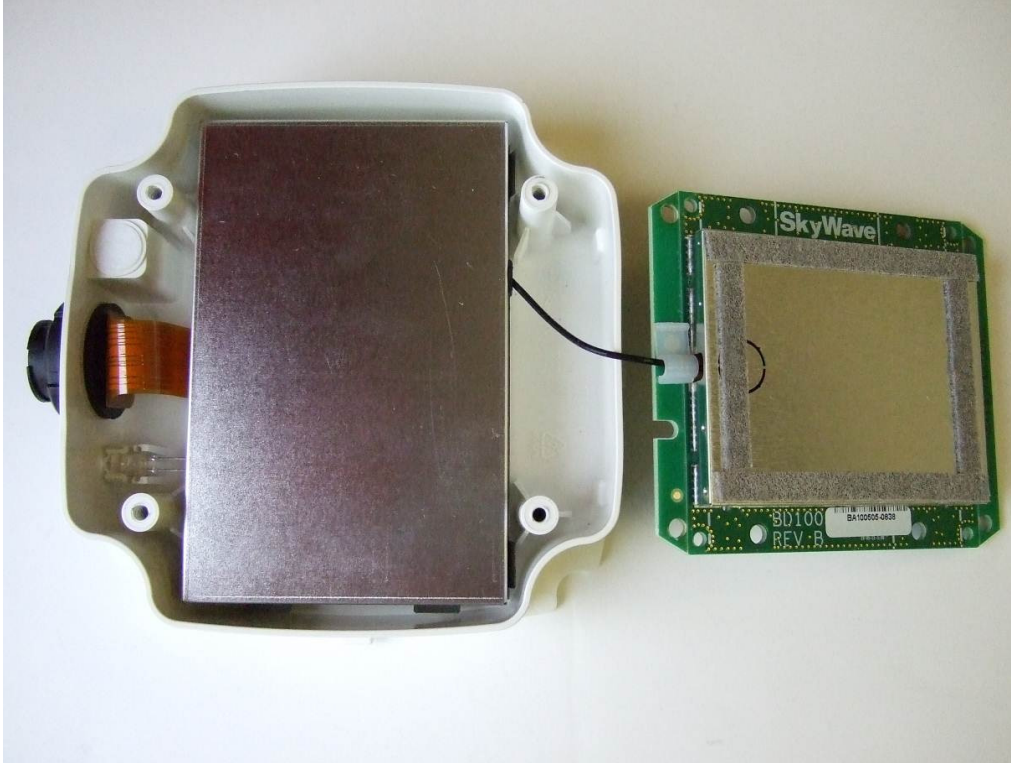


Figure 3-2 IDP-680 Inside View Antenna Bottom

3.2. Circuit Card Pictures

The IDP-680 contains three printed circuit cards

- Antenna Card
- Modem Card
- Application Card

The following section contains pictures of the top and bottom views of these three printed circuit assemblies, with their internal shields removed.

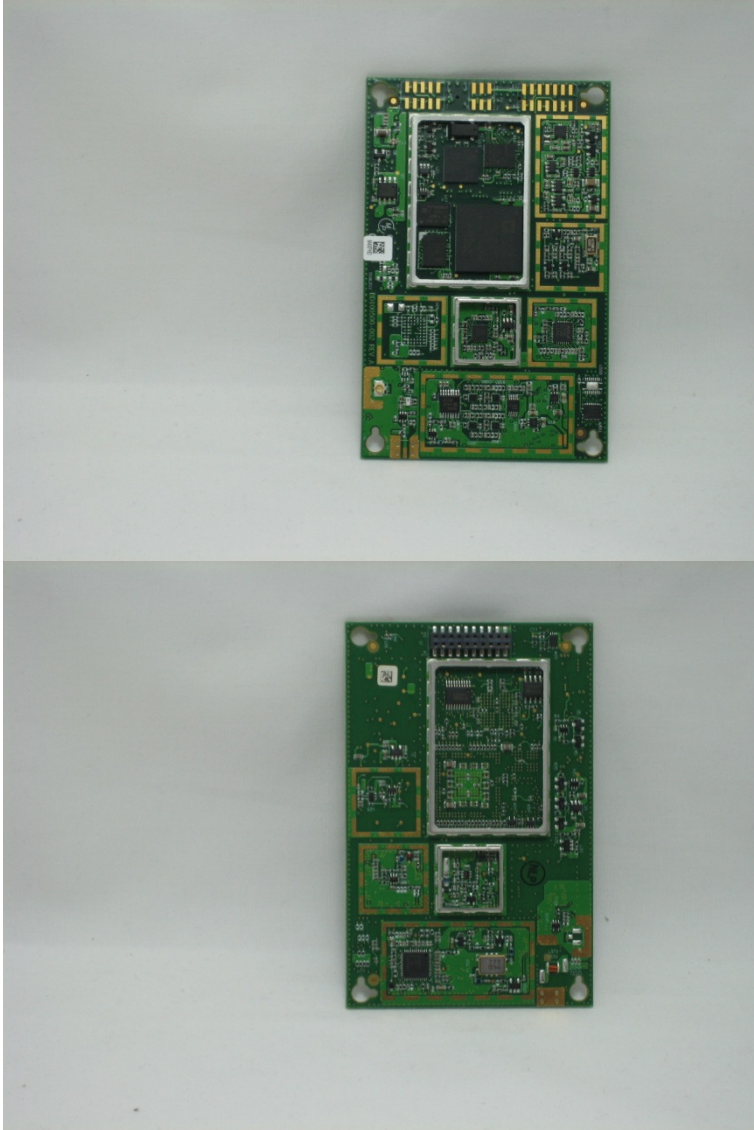


Figure 3-3 IDP-680 Modem Card - Top and Bottom View (no shields)

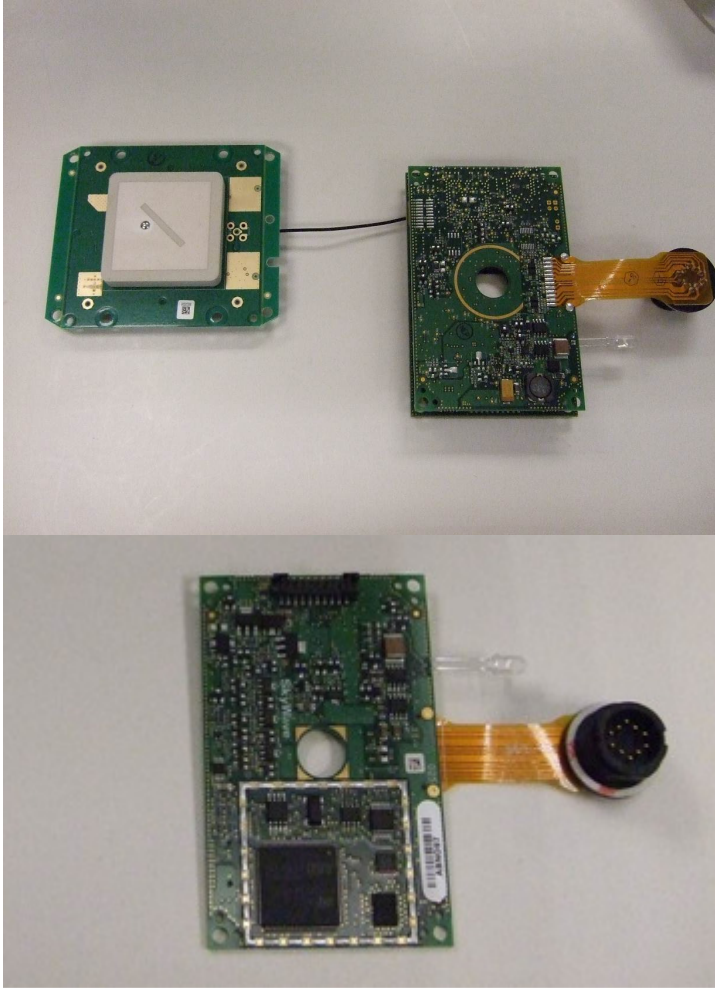


Figure 3-4 Application Card Top and Bottom View (Shields Removed)

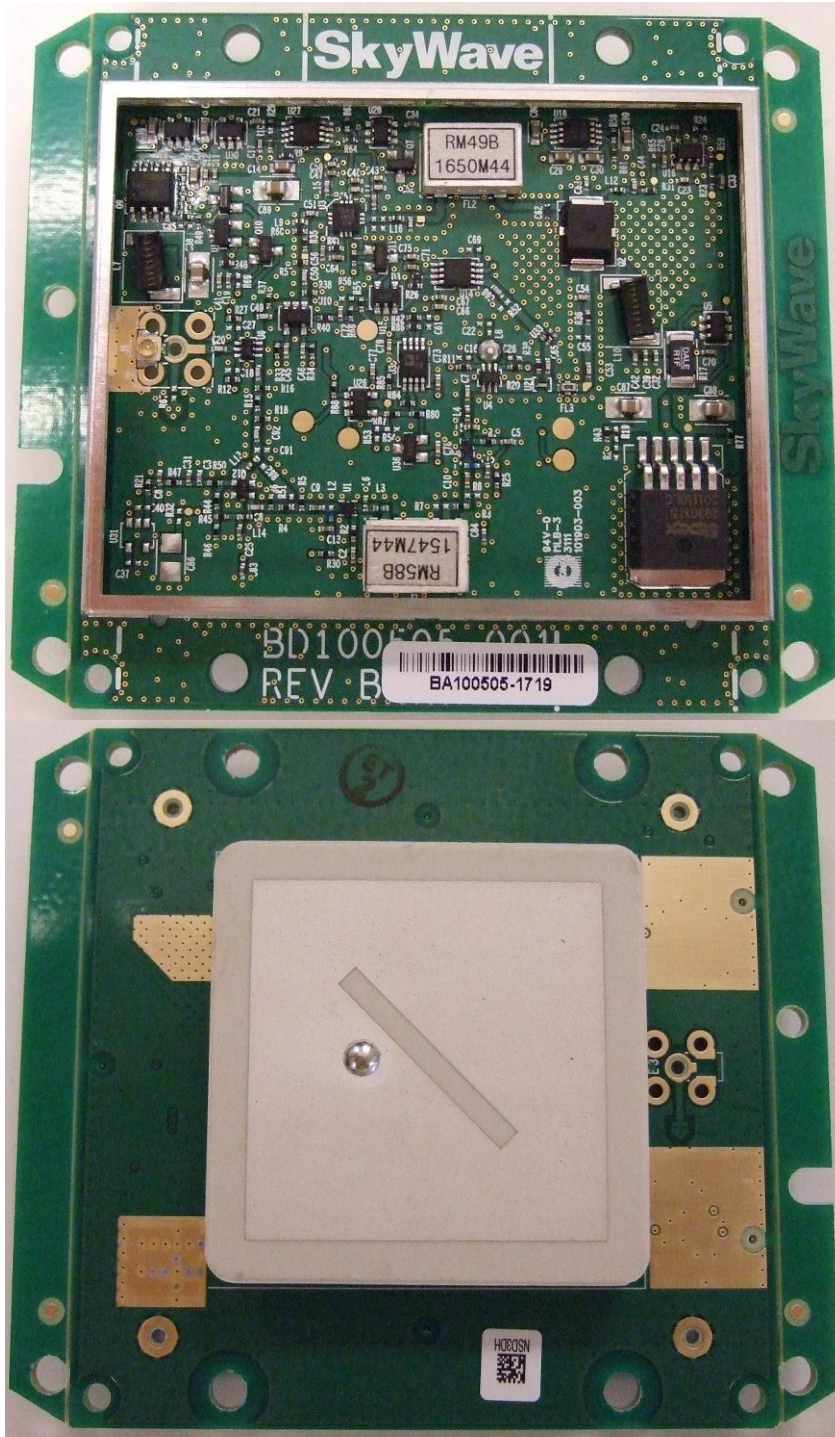


Figure 3-5 IDP-680 Antenna Card – Top and Bottom View