

**IDP-1XX**  
**Technical Description**  
**Internal Pictures**  
**(IC)**

**SkyWave File: COMP078-I-014**

<b>REVISION</b>	VERSION 1	VERSION2			
<b>DATE</b>	Feb 21,2012	Mar 8,2012			

<b>APPROVALS</b>	<b>TITLE</b>	<b>SIGNATURE</b>	<b>DATE</b>
Doug Reveler	VP Product Management IsatData Pro		

The information contained herein is proprietary to SkyWave  
Mobile Communications Inc., and is not to be used or reproduced  
without permission.

**Table of Contents**

1. Introduction .....1  
2. Revision History .....1  
3. IDP-180 Internal Pictures.....2

## 1. Introduction

The following document contains internal product pictures required for Industry Canada approval of the IDP-180 and IDP-190 modems.

The IDP-180 is an IDP-110 with a low profile (patch ) antenna. The IDP-190 is a IDP-110 with a low elevation ( quadifilar helix ) antenna.

The IC number for this submission is 3745A-IDP1XX

## 2. Revision History

Author	Version	Comment
DR	1.0	Initial version sent to Nemko for comments.
DR	2	Add addition more shield pictures

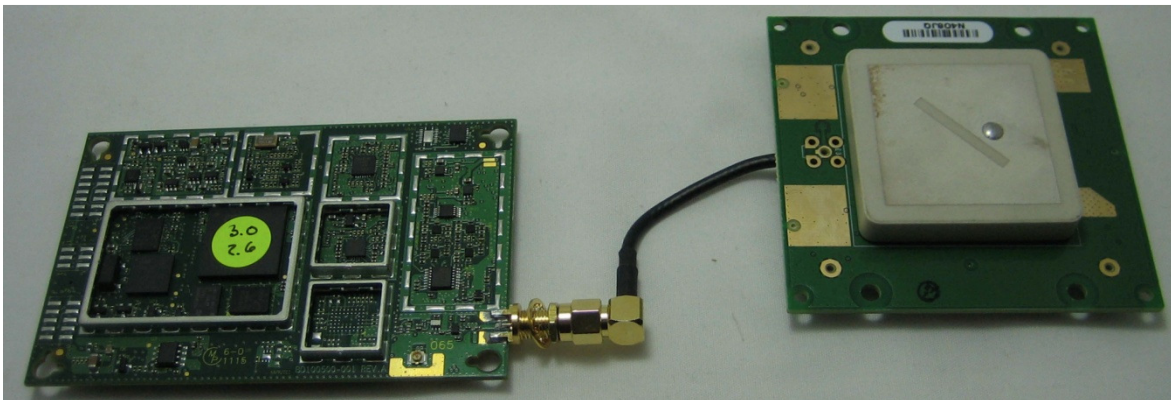
### 3. IDP-180 Internal Pictures

The following section contains internal pictures of the IDP-180. The internal pictures for the side and bottom connector versions are the same.

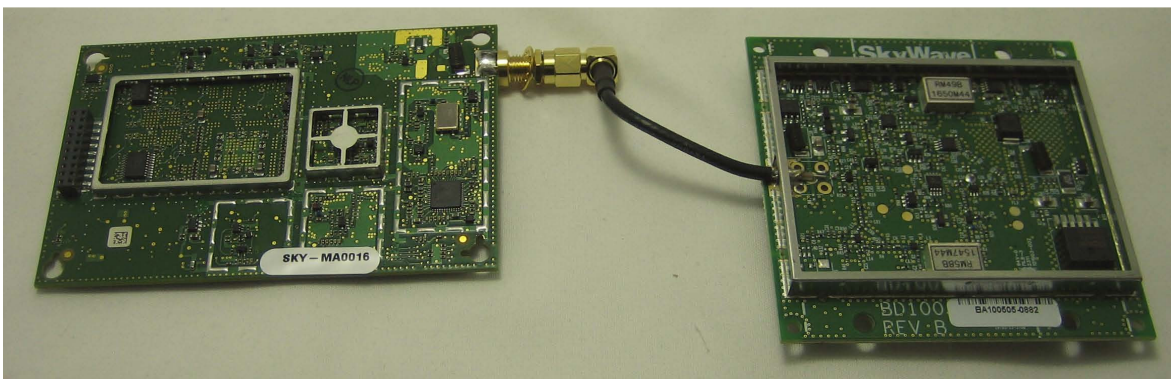
The IDP-180 contains two printed circuit cards

- Antenna Card
- Core Modem Assembly ( IDP-110)

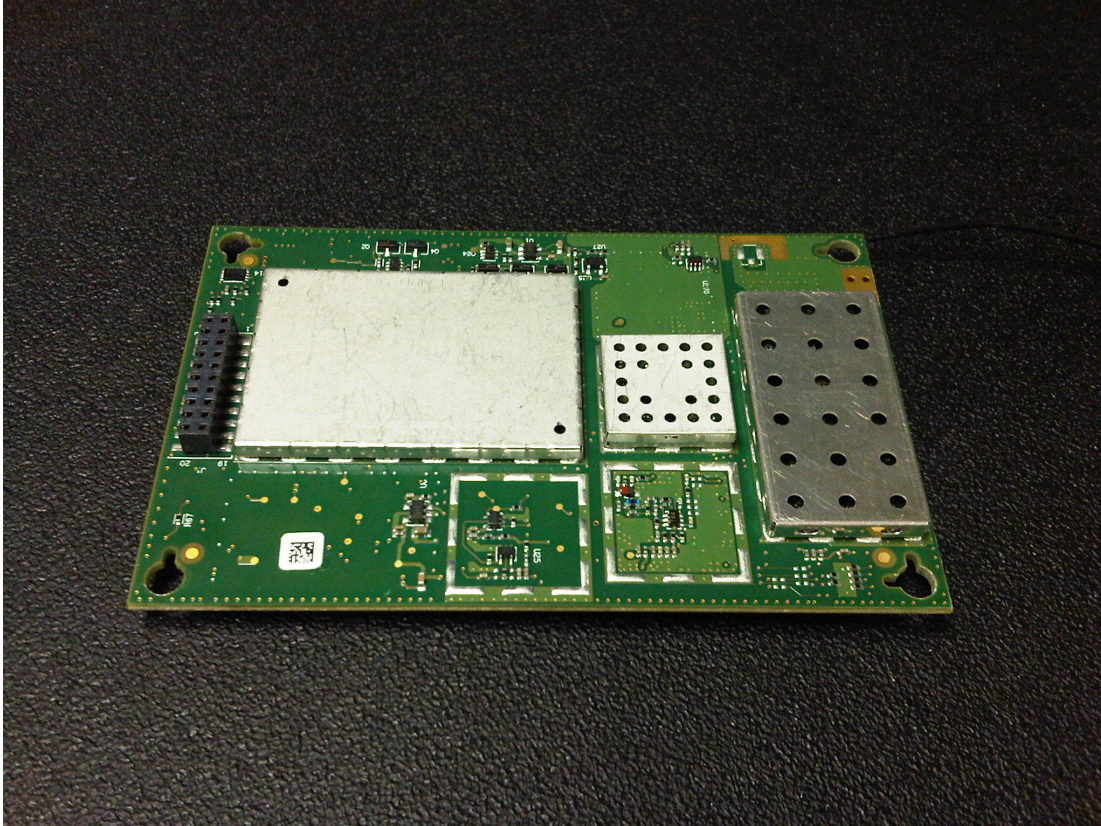
Figures 3-1 and Figures 3-2 show the assembly with no shield covers. Figures 3-2 and Figures 3-4 show shield covers on the core modem assembly while Figure 3-5 shows the bottom shield on antenna card.



**Figure 3-1 IDP-180 Electronics (both circuit cards) – Top View**

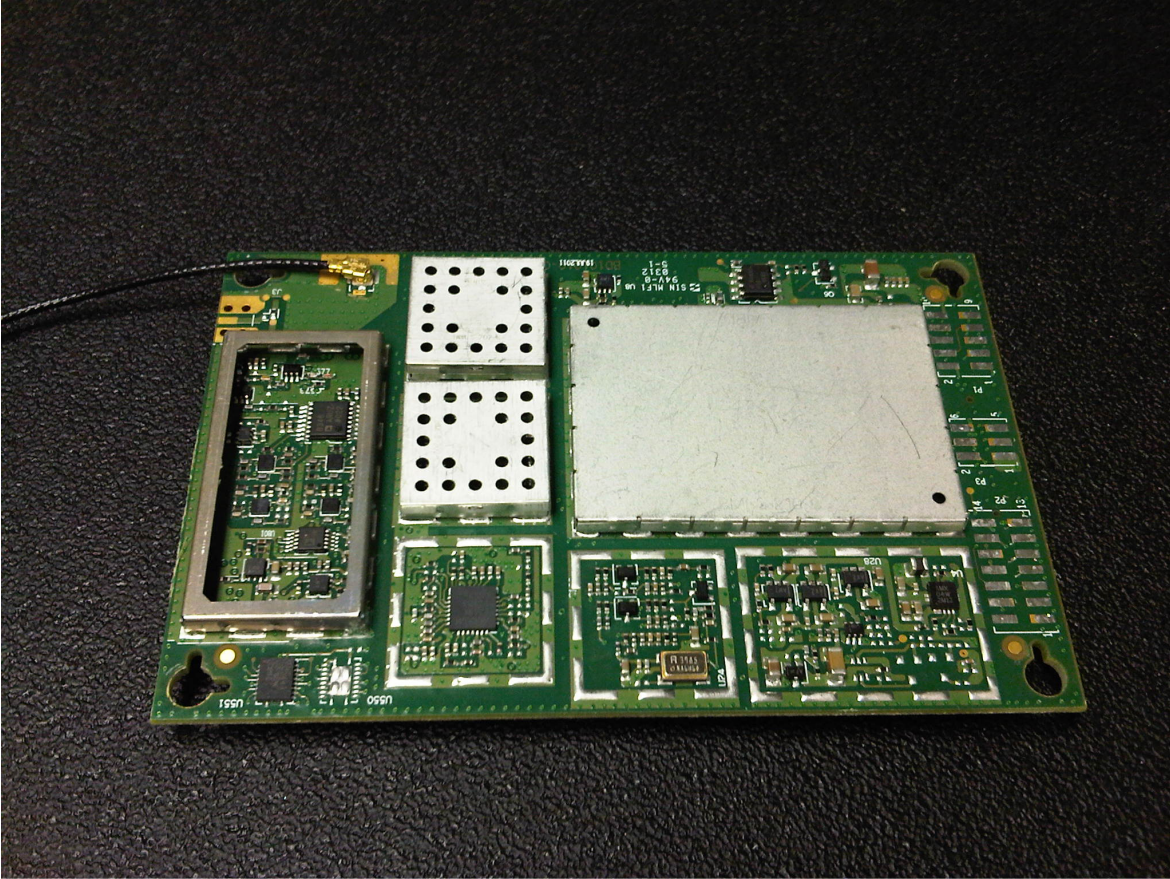


**Figure 3-2 IDP-180 Electronics (both circuit cards) – Bottom View**

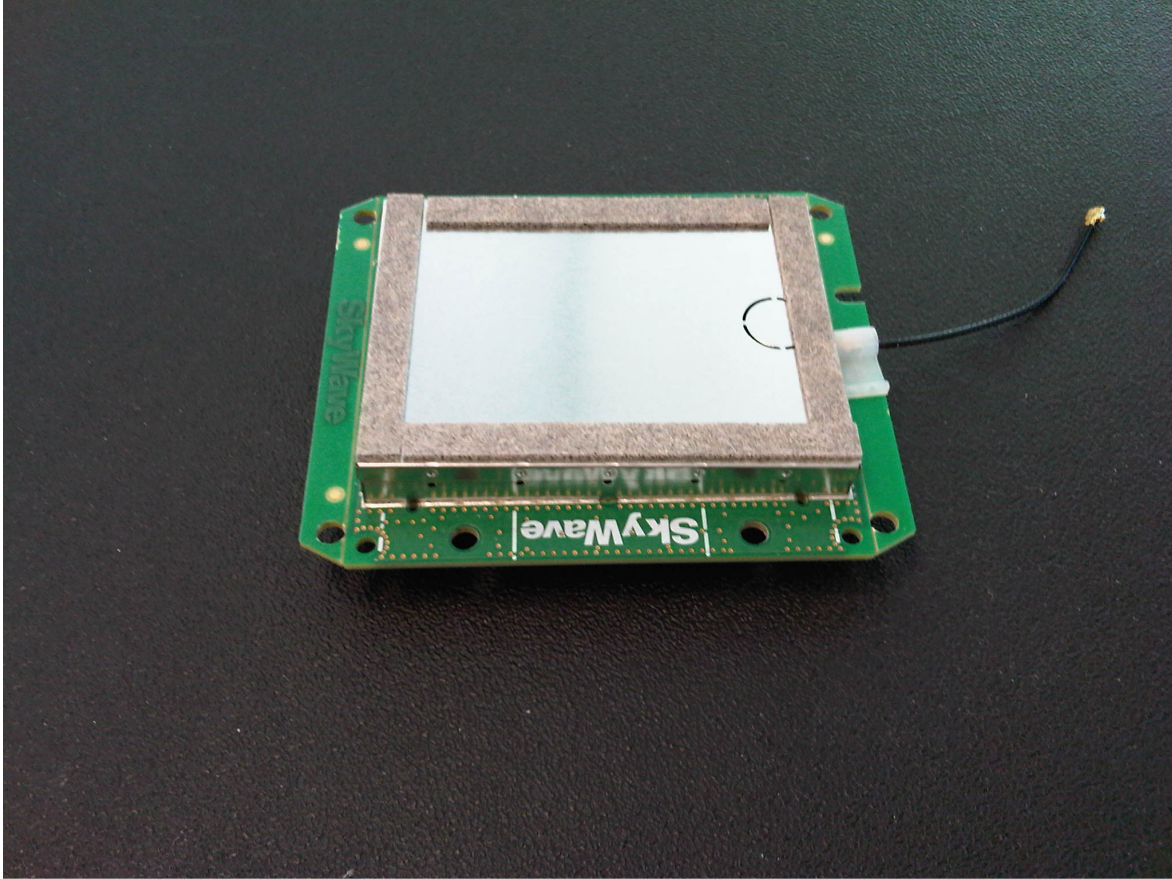


**Figure 3-3 IDP-180 Core modem Assembly with Shields – Top View**





**Figure 3-4 IDP-180 Core modem assembly with Shields – Bottom View**



**Figure 3-5 IDP-180 Antenna Shield – Bottom View**