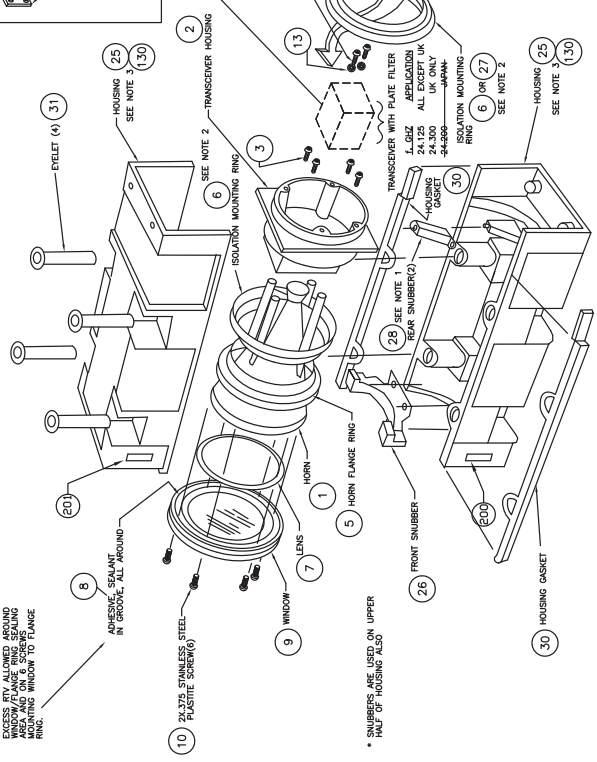
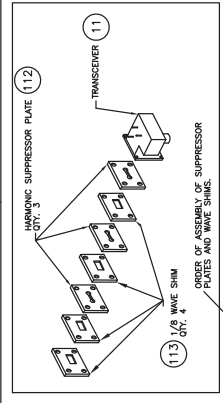


ITEM NO.	TORQUE RANGE (LB.-IN.)
3	19-25
10	1-2
12	10-13
19	5-7
20	10-13
21	5-7
22	10-13
40	10-13

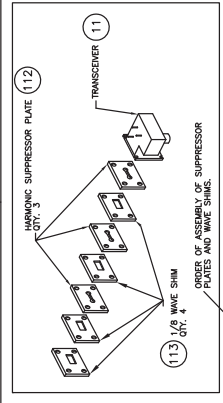
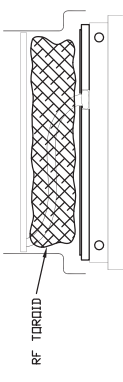
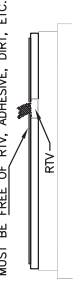
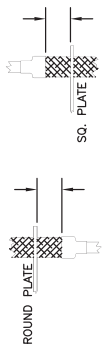
SEE SHEET 3 FOR ASSEMBLY DETAIL FOR -0038A, -0039A, -0052A, -0055, -0056, -0058, & -0059



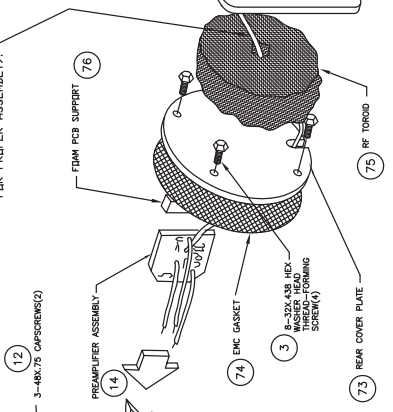
* SNUBBERS ARE USED ON UPPER PART OF HOUSING ALSO

ASSEMBLY INSTRUCTIONS FOR OPTIMUM EMI SHIELDING

- 1-CABLE-SLOT ASSEMBLY
 - INSERT CABLE INTO THE SLOT FROM THE END OF THE SHRINK TUBING. THIS APPLIES TO BOTH PLATES.
- 2-APPLYING RTV MINIMUM AMOUNT OF RTV.
 - JUST ENOUGH TO FILL THE CAVITY.
 - THE TOP SURFACE OF THE SQ. PLATE MUST BE FREE OF RTV, ADHESIVE, DIRT, ETC.
- 3-CAN ASSEMBLY
 - POSITION THE CAN SO THAT THE CABLE GOES TO THE LEFT AS SHOWN BELOW.



HARNES TO PASS THRU RF TOROID AS SHOWN FOR CLARITY. (SEE ASSY INSTRUCTION DETAIL FOR PROPER ASSEMBLY.)



- NOTE:
1. SNUBBERS ITEM 28 NOT INSTALLED ON ASSEMBLY 44587-0057
 2. REAR ISOLATION MOUNTING RING ITEM 27 INSTALLED (ONLY) ON ASSEMBLY 445870057.
 3. DOW 739 BLACK RTV ITEM 130 INSTALLED (ONLY) ON CAT 24V ASSEMBLIES 445870029C; 445870038A; 445870052A. SEE VMI FOR PROPER APPLICATION.

FASTENER INSTALLATION SPECIFICATIONS

ITEM NO.	TORQUE RANGE (LB.-IN.)
3	19-25
10	1-2
12	10-13
19	5-7
20	10-13
21	5-7
22	10-13
40	10-13

