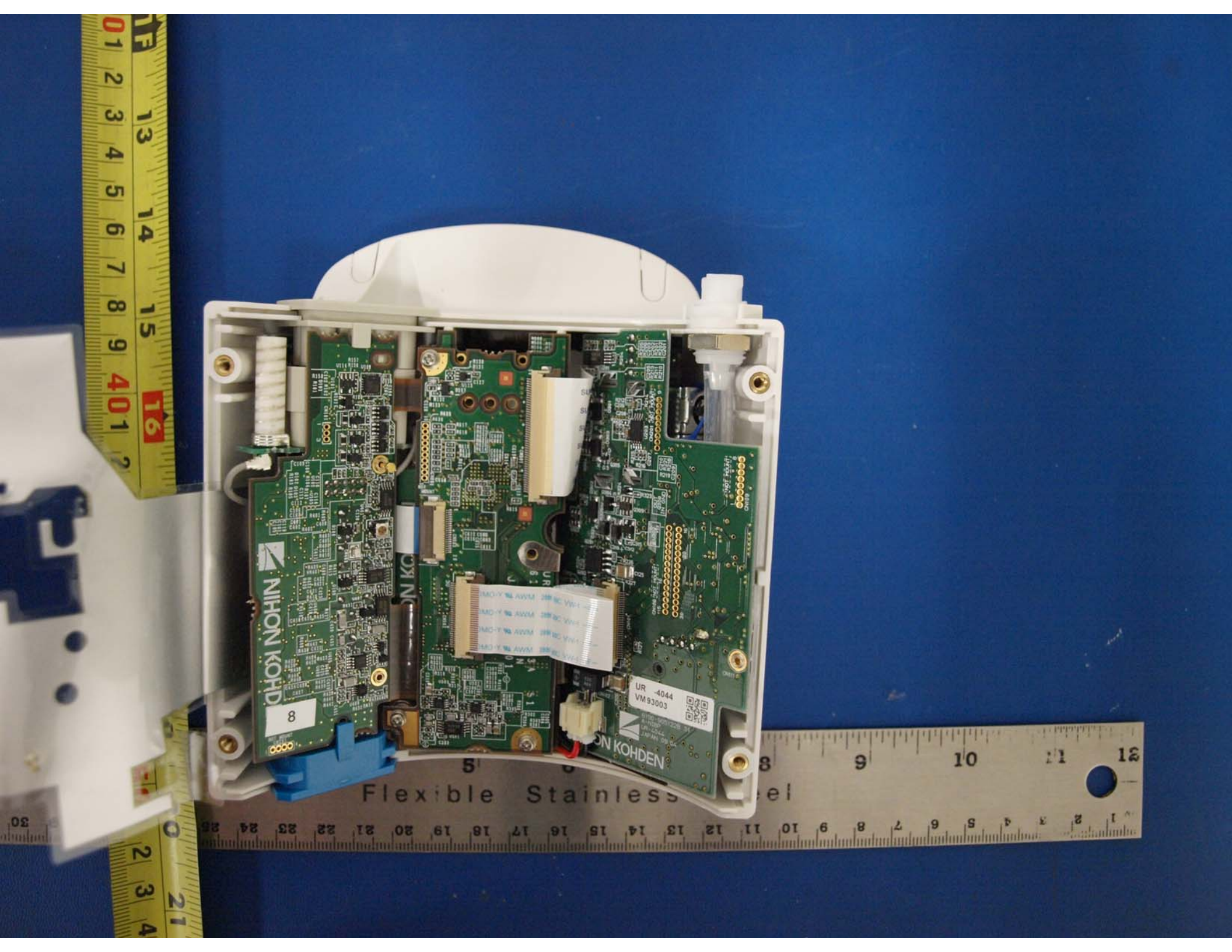


1
2
3
4
5
6
7
8
9
10
11
12
13
14
15
16
17
18
19
20
21
22

1
2
3
4
5
6
7
8
9
10
11
12
13
14
15
16
17
18
19
20
21
22

1
2
3
4
5
6
7
8
9
10
11
12
13
14
15
16
17
18
19
20
21
22
23
24
25
26
27
28
29
30
31
32

Flexible Stainless Steel



01 2 3 4 5 6 7 8 9 401
13 14 15 16

NIHON KOHDEN
8

NIHON KOHDEN

MD-Y 96 AWM 288 BC Vw-1
MD-Y 96 AWM 288 BC Vw-1
MD-Y 96 AWM 288 BC Vw-1
MD-Y 96 AWM 288 BC Vw-1

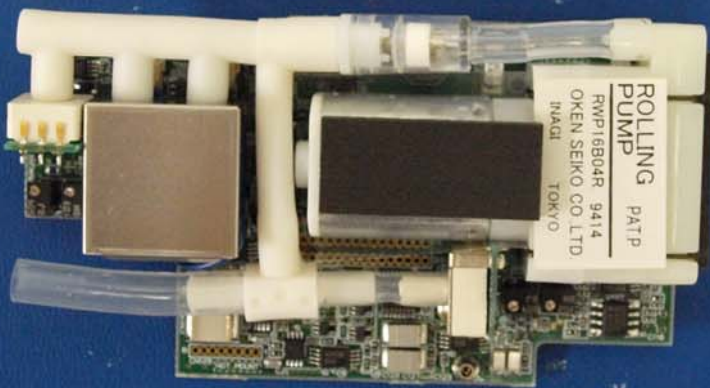
UR -4044
VM 93003

NIHON KOHDEN

Flexible Stainless Steel

30 2 3 4 21
5 6 7 8 9 10 11 12 13 14 15 16 17 18 19 20 21 22 23 24 25

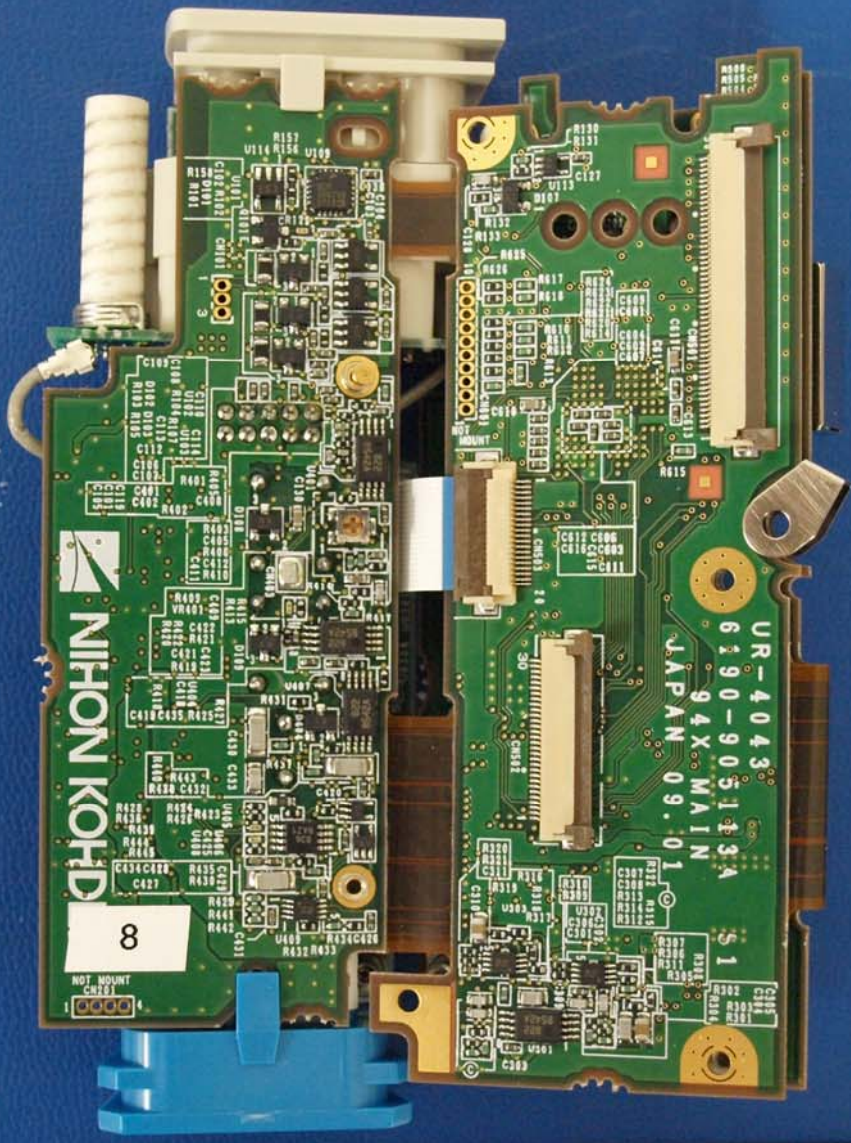




ROLLING PUMP PATP
RWP16B04R 9414
OKEN SEIKO CO. LTD.
INAGI TOKYO



14
15
16
17
18
19



Flexible Stainless Steel

3 4 5 6 7 8 9 10
23 22 21 20 19 18 17 16 15 14 13 12 11 10 9 8 7 6 5 4 3

5 6 7 8 9 10 11 12 13 14 15 16 17 18 19

4 5 6 7 8 9 10
Flexible Stainless Steel



MODEL: VCO-C6
FREQ: 608-614MHz
P/N: 629072B
S/N: 00010360

ver. 0064
92008

NIHON KONDEN
JAPAN 08.12
SPO2 UR-4051
6190-905238A

ANALOG

92008



14

15

16

17

18

19

5

6

7

8

9

40

1

2

3

4

5

6

7

8

9

4

5

6

7

8

9

10

Flexible Stainless Steel

21

20

19

18

17

16

15

14

13

12

11

10

9

8

7

6

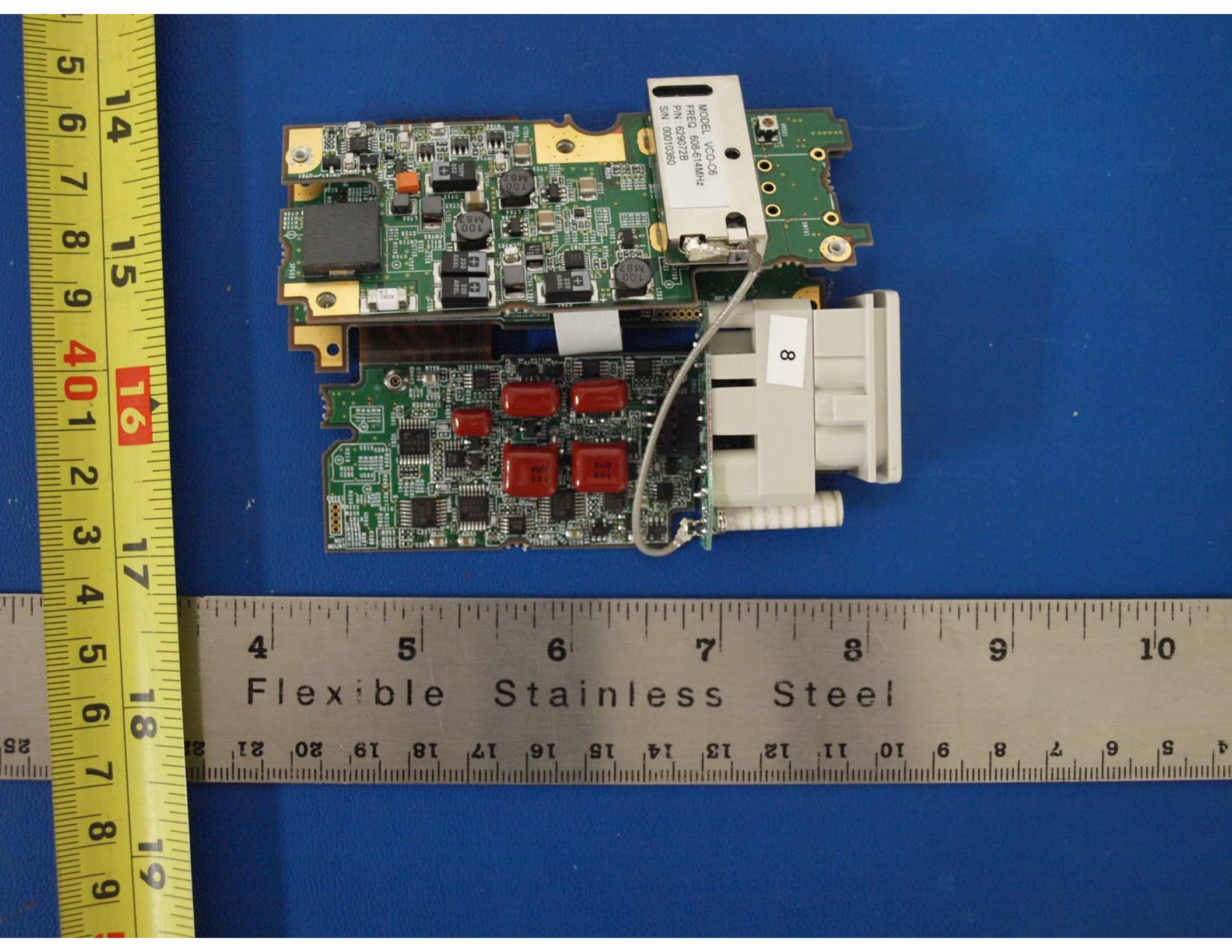
5



14 15 16 17 18 19

5 6 7 8 9 40 1 2 3 4 5 6 7 8 9

4 5 6 7 8 9 10
Flexible Stainless Steel
4 5 6 7 8 9 10 11 12 13 14 15 16 17 18 19 20 21



MODEL: VCO-C6
FREQ: 608.614MHz
PIN: 629072B
S/N: 00010360

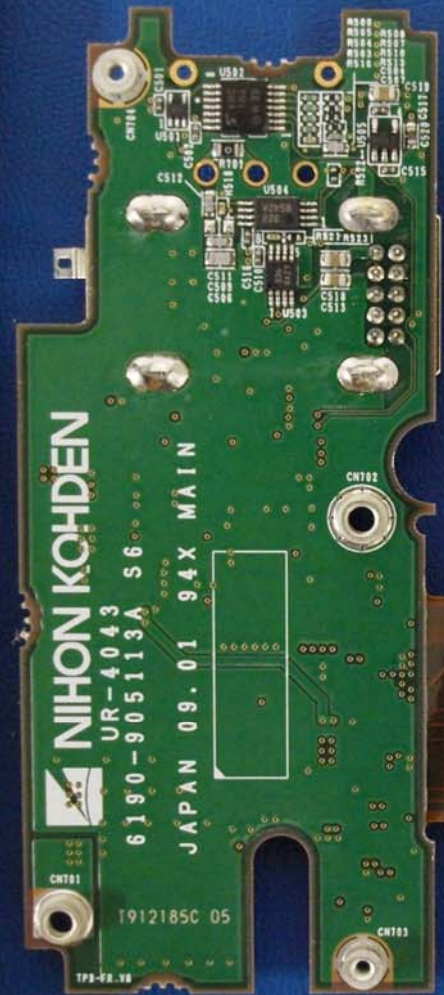
8

4 5 6 7 8 9 10
Flexible Stainless Steel

4 5 6 7 8 9 10 11 12 13 14 15 16 17 18 19 20 21 22

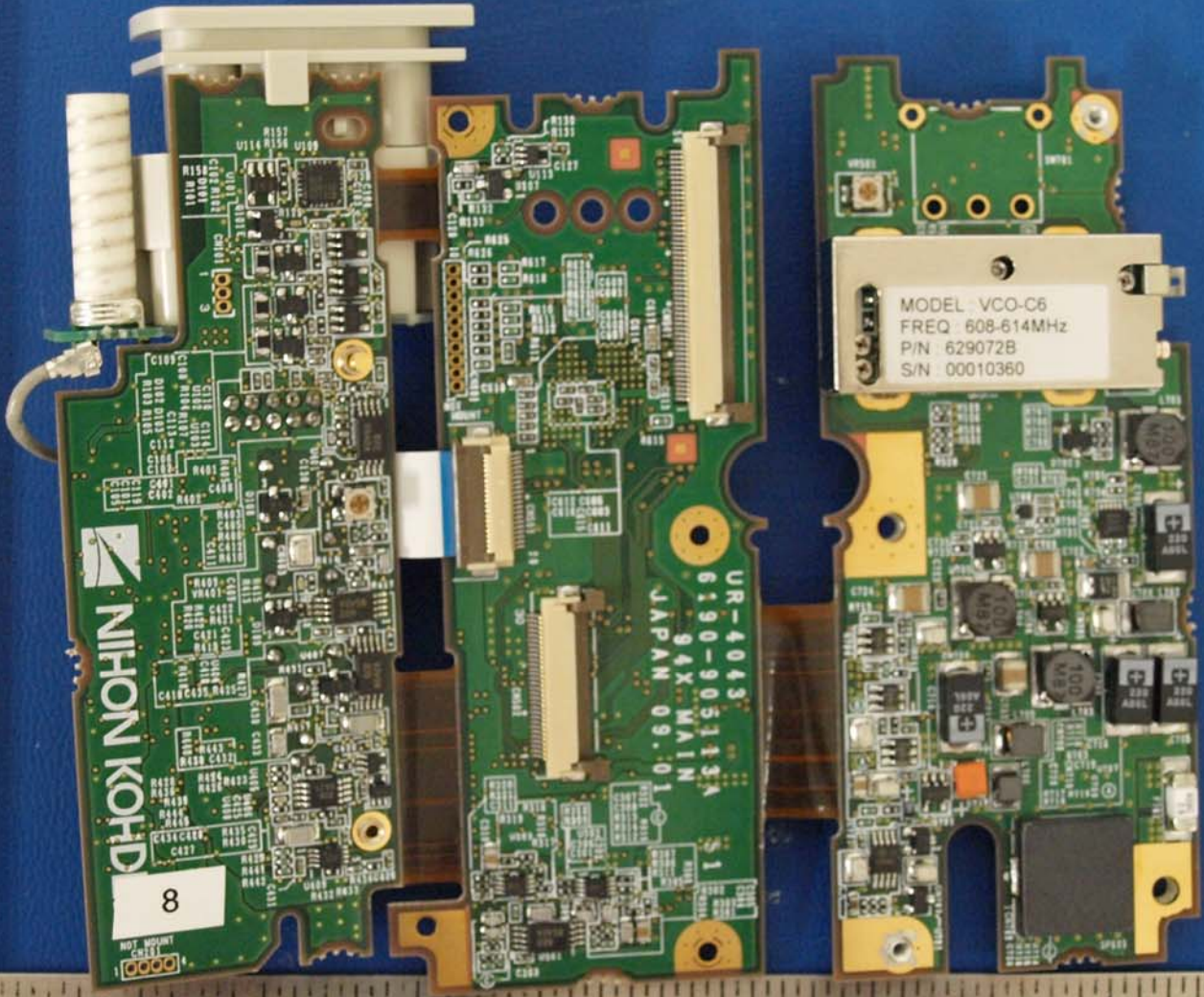
5 6 7 8 9 10 11 12 13 14 15 16 17 18 19

5 6 7 8 9 10 11 12 13 14 15 16 17 18 19



4 5 6 7 8 9 10
Flexible Stainless Steel
21 20 19 18 17 16 15 14 13 12 11 10 9 8 7 6 5 4

5 6 7 8 9 10 11 12 13 14 15 16 17 18 19
20 21 22 23 24



4 5 6 7 8 9 10
Flexible Stainless Steel
4 5 6 7 8 9 10 11 12 13 14 15 16 17 18 19 20 21