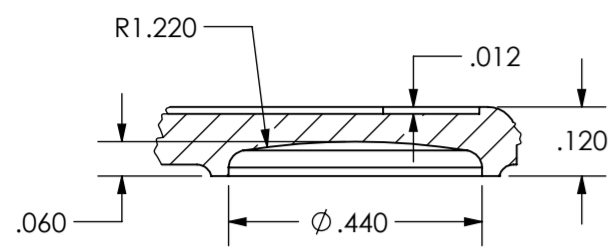
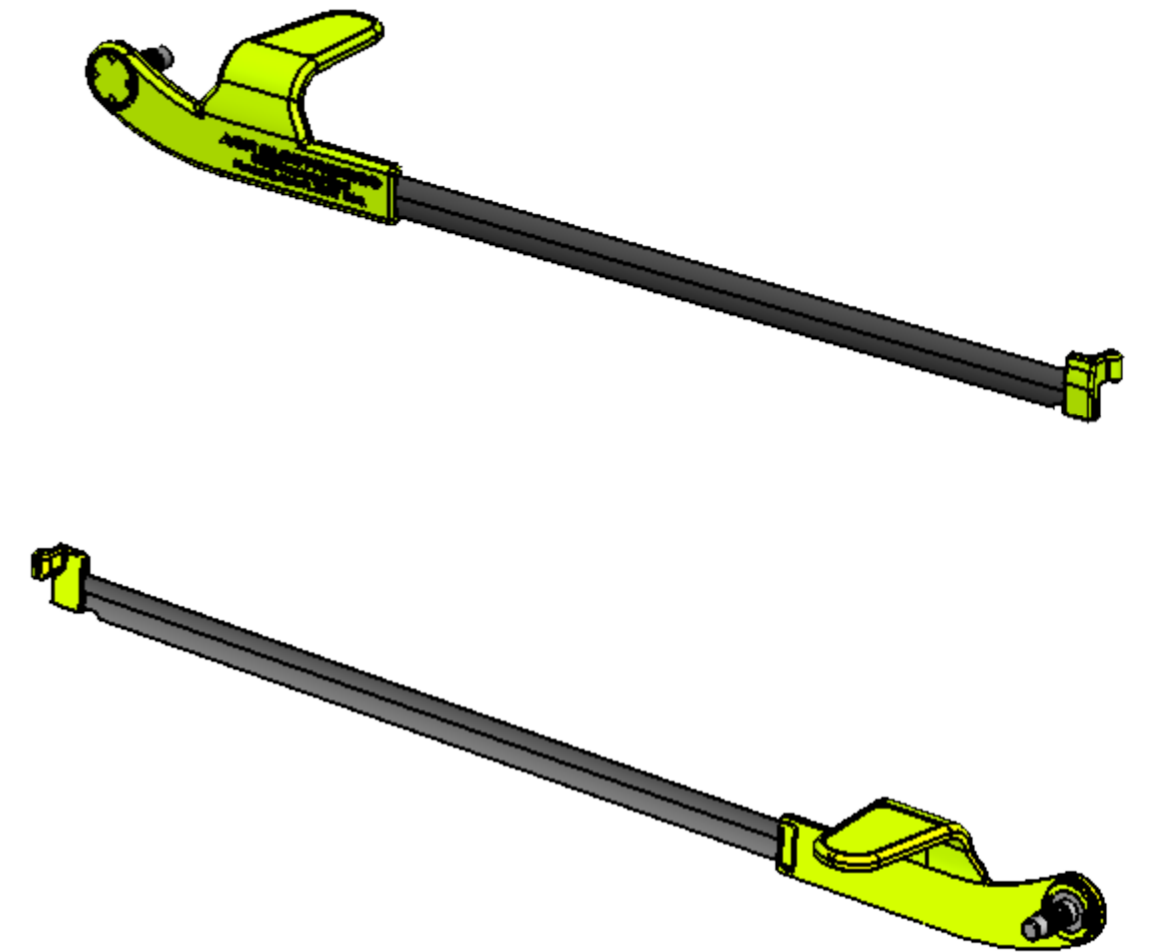
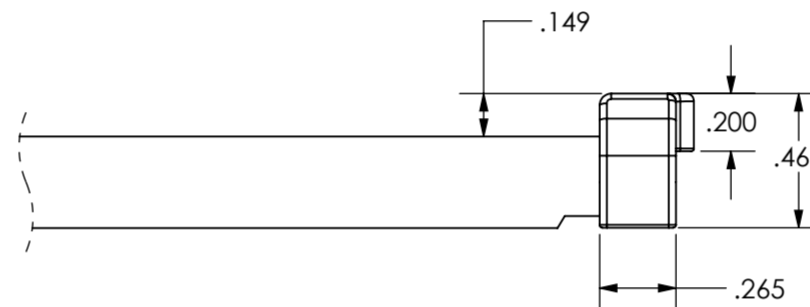
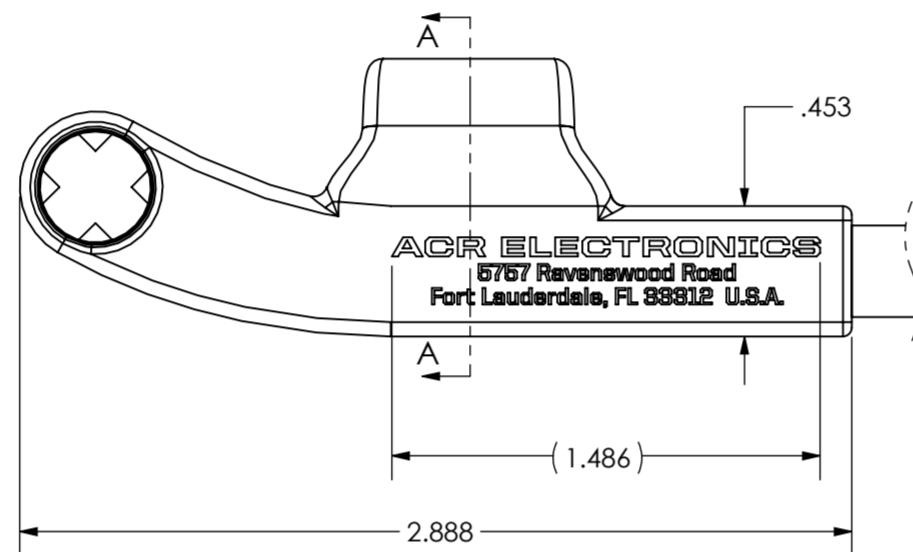
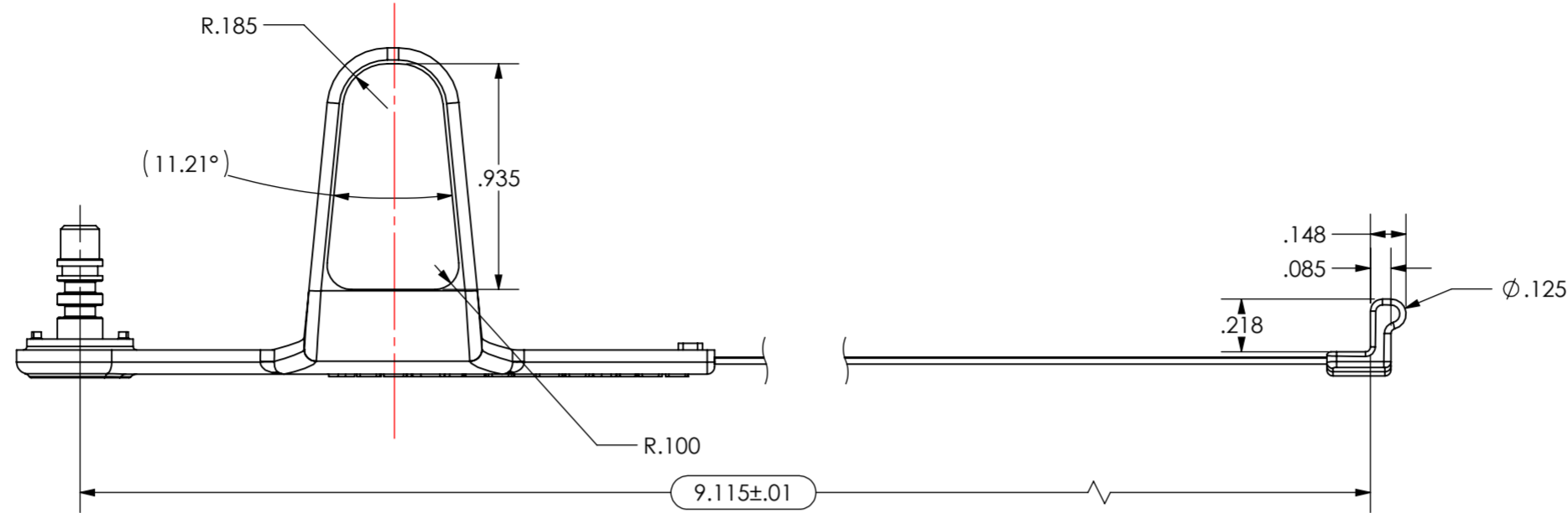


THIS DOCUMENT AND THE DATA DISCLOSED HEREIN OR HEREWITH IS PROPERTY OF AND BELONGS TO ACR ELECTRONICS, INC. FT. LAUDERDALE, FL. IT IS FURNISHED IN CONFIDENCE SOLELY FOR INFORMATIONAL PURPOSES. IT IS NOT TO BE REPRODUCED, USED OR DISCLOSED IN WHOLE OR IN PART TO ANYONE WITHOUT THE PERMISSION OF ACR.

REVISIONS			
REV	DESCRIPTION	DATE	APPROVED
A	RELEASED PER W/105-EN-01, SAME AS T7	12/05/18	CR



DETAIL B
SCALE 3 : 1

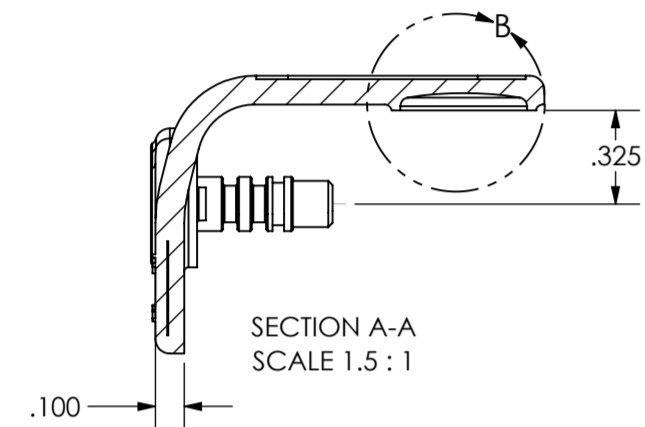


NOTES:

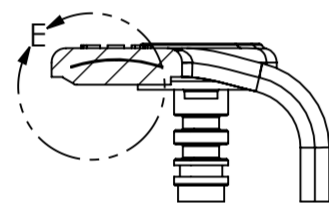
- MATERIAL: POLYPROPYLENE WITH UV INHIBITER. NO REGRIND PERMITTED.
- FINISH: MOLD-TECH 11520 OR EQUIVALENT ON ALL SURFACES EXCEPT IN LOCATIONS INDICATED ON DRAWING.
- GATE & K.O. PIN LOCATIONS TO BE APPROVED BY ACR ELECTRONICS, INC. ENGINEERING DEPARTMENT PRIOR TO PRODUCTION OF MOLD.
- PART TO BE FREE OF NICKS, MARKS OR SCRATCHES.
- FLASH NOT TO EXCEED .005 X .005 UNLESS OTHERWISE SPECIFIED.
- IDENTIFY BULK PACKAGING WITH ACR PART NUMBER.

A/R	2	A1-18-1625-25	COLOR RESIN, ACRTREUSE
1	1	A3-06-3135-1	ANTENNA BLADE ASSY., PLB-400 & 425
NO DASH	ITEM NO.	PART OR IDENTIFYING NO.	NOMENCLATURE OR DESCRIPTION

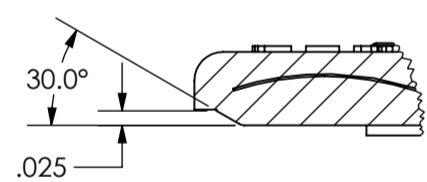
LIST OF MATERIALS OR PARTS LIST			
UNLESS OTHERWISE SPECIFIED: ALL ANGLES ARE 90°	DRAWN	FD	3/9/18
TOLERANCES ON	CHECKED	CR	12/05/18
MILLIMETER	ENG.	FG	12/05/18
FRACTIONS	APVD:	JC	12/05/18
DECIMALS	ACR ELECTRONICS, INC 5757 RAVENSWOOD RD. FT. LAUDERDALE FL 33312		
ANGLES	ANTENNA, OVERMOLDED, PLB-400 & 425		
X. ±.25	SIZE	C	CODE IDENT. NO. 18560
X.X ±.125	DRAWING NO.	A3-06-3136	
X.XX ±.006	REV	A	
±1/64	SCALE	1:1	
.X ±.030	SHEET	1 OF 1	
.XX ±.010			
.XXX ±.005			
ANGLES			
X ± 5°			
.X ± 2°			
.XX ± 1°			
.XXX ± 1/2°			
IMPLD: ±1°			
ANSI-C SOLIDWORKS			



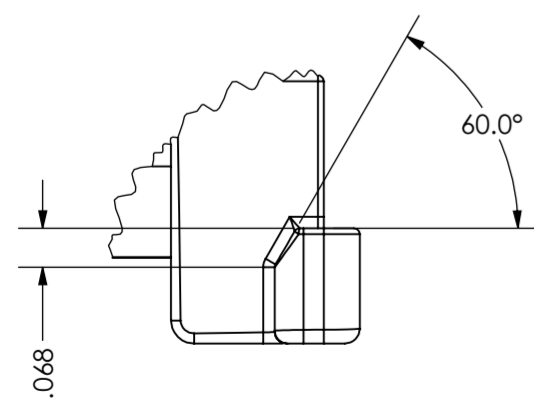
SECTION A-A
SCALE 1.5 : 1



SECTION D-D
SCALE 1.5 : 1



DETAIL E
SCALE 3 : 1



DETAIL C
SCALE 3 : 1

18560
DWG. NO.
A3-06-3136
SHEET 1 OF 1