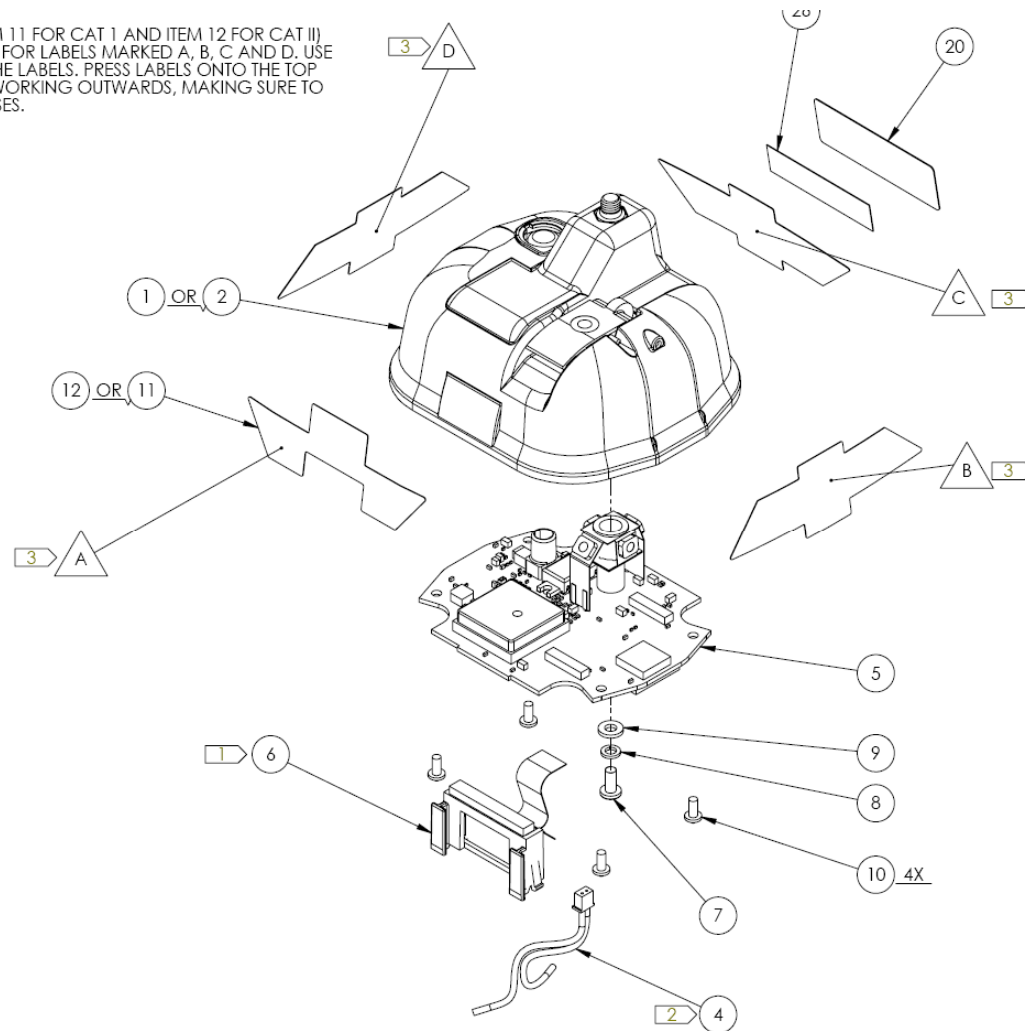


The top case of the RLB-36 has 4 labels, A, B, C, and D, attaching to 4 sides of the top case per following drawing:

APPLY RETRO-REFLECTIVE LABELS (ITEM 11 FOR CAT I AND ITEM 12 FOR CAT II) WHERE SHOWN. NOTE THE LOCATION FOR LABELS MARKED A, B, C AND D. USE THE TABS IN THE TOP CAP TO ALIGN THE LABELS. PRESS LABELS ONTO THE TOP CAP, STARTING AT THE CENTER AND WORKING OUTWARDS, MAKING SURE TO REMOVE ALL BUBBLES AND/OR CREASES.



THIS DOCUMENT AND THE DATA DISCLOSED HEREIN OR HEREWITH IS PROPERTY OF AND BELONGS TO ACR ELECTRONICS, INC. FT LAUDERDALE, FL. IT IS FURNISHED IN CONFIDENCE SOLELY FOR INFORMATIONAL PURPOSES. IT IS NOT TO BE REPRODUCED, USED OR DISCLOSED IN WHOLE OR IN PART TO ANYONE WITHOUT THE PERMISSION OF ACR.

REVISIONS			
REV	DESCRIPTION	DATE	APPROVED
A	RELEASE PER ECO 13466	LAM	7/18/08 T. MARTIN

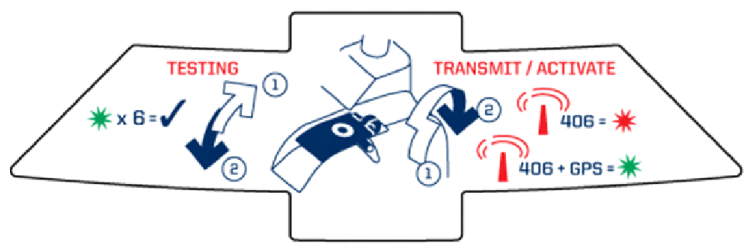
REV 1
 SHT 1
 DWG. NO. 18560
 A1-20-1443

- NOTES:
- ARTWORK PRINTED ON SCOTCHLIGHT 3 mil WITH FULL CLEAR OVERPRINT ACR PART NUMBER A2-05-0135-.
 - OUTLINES ON DRAWING REFERENCE ONLY FOR PLACEMENT OF ART.
 - PMS COLORS:
 BLUE - 282C
 RED - 199C
 GREEN - 355C

A
 (FOR DIMENSIONS
 REFERENCE A2-05-0135-1)



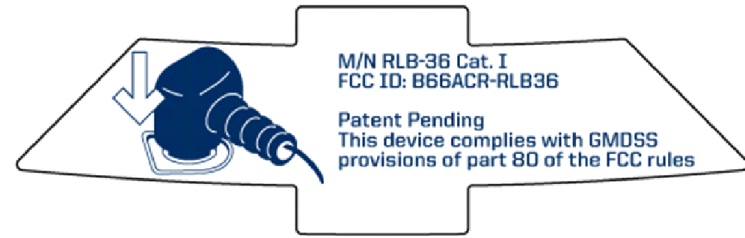
B
 (FOR DIMENSIONS
 REFERENCE A2-05-0135-2)



C
 (FOR DIMENSIONS
 REFERENCE A2-05-0135-3)



D
 (FOR DIMENSIONS
 REFERENCE A2-05-0135-4)



UNLESS OTHERWISE SPECIFIED
 ALL ANGLES ARE 90°
 DIMENSIONS ARE IN INCHES

TOLERANCES ON

FRACTIONS	DECIMALS	ANGLES
±1/64	.X ± .030 .XX ± .010 .XXX ± .005	X ± 5° .X ± 2° .XX ± 1° .XXX ± 1/2° IMPLIED: ±1°

ANSI-A SOLIDWORKS

DRAWN	LAM	6/11/08
CHECKED	TM	7/18/08
ENG.	CT	7/9/08
APVD.	KLK	7/17/08

(X) DENOTES REVISION CHANGE
 (+) DENOTES DIMENSION PLUS DRAFT ANGLE
 (-) DENOTES DIMENSION MINUS DRAFT ANGLE
 (XX) DENOTES REFERENCE NOTE OR DIMENSION
 (XX) DENOTES CRITICAL INSPECTION DIMENSIONS

ACR ELECTRONICS, INC
5757 RAVENSWOOD RD. FT. LAUDERDALE FL 33312

**LABEL, RLB36 TOP CASE,
 LABEL SET, CAT I**

SIZE A	CODE IDENT. NO. 18560	DRAWING NO. A1-20-1443	REV A
SCALE 1:1	SHEET 1 OF 1		

THIS DOCUMENT AND THE DATA DISCLOSED HEREIN OR HEREWITH IS PROPERTY OF AND BELONGS TO ACR ELECTRONICS, INC. FT LAUDERDALE, FL. IT IS FURNISHED IN CONFIDENCE SOLELY FOR INFORMATIONAL PURPOSES. IT IS NOT TO BE REPRODUCED, USED OR DISCLOSED IN WHOLE OR IN PART TO ANYONE WITHOUT THE PERMISSION OF ACR.

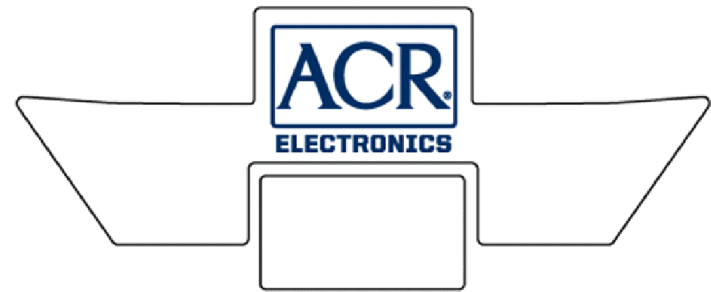
REVISIONS			
REV	DESCRIPTION	DATE	APPROVED
A	RELEASE PER ECO 13466	LAM	7/18/08 T. MARTIN

REV 1
SHT 1
A1-20-1447

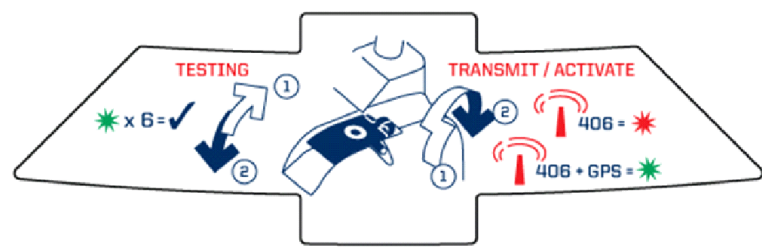
DWG. NO. 18560

- NOTES:
- ARTWORK PRINTED ON SCOTCHLIGHT 3 mil WITH FULL CLEAR OVERPRINT ACR PART NUMBER A2-05-0135-.
 - OUTLINES ON DRAWING REFERENCE ONLY FOR PLACEMENT OF ART.
 - PMS COLORS:
BLUE - 282C
RED - 199C
GREEN - 355C

A
(FOR DIMENSIONS
REFERENCE A2-05-0135-1)



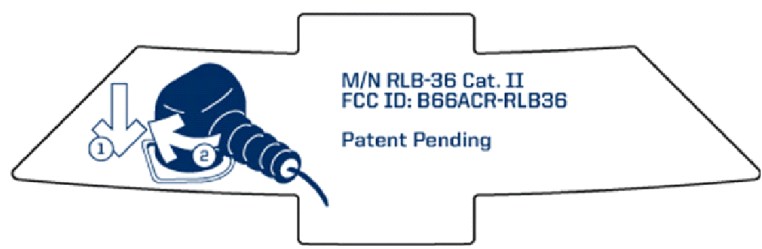
B
(FOR DIMENSIONS
REFERENCE A2-05-0135-2)



C
(FOR DIMENSIONS
REFERENCE A2-05-0135-3)



D
(FOR DIMENSIONS
REFERENCE A2-05-0135-4)



UNLESS OTHERWISE SPECIFIED
ALL ANGLES ARE 90°
DIMENSIONS ARE IN INCHES

TOLERANCES ON

FRACTIONS	DECIMALS	ANGLES
±1/64	.X ± .030 .XX ± .010 .XXX ± .005	X ± 5° .X ± 2° .XX ± 1° .XXX ± 1/2° IMPLIED: ±1°

ANSI-A SOLIDWORKS

DRAWN	LAM	6/11/08
CHECKED	TM	7/18/08
ENG.	CT	7/9/08
APVD.	KLK	7/17/08

(X) DENOTES REVISION CHANGE
 (+) DENOTES DIMENSION PLUS DRAFT ANGLE
 (-) DENOTES DIMENSION MINUS DRAFT ANGLE
 (XX) DENOTES REFERENCE NOTE OR DIMENSION
 (XX) DENOTES CRITICAL INSPECTION DIMENSIONS

ACR ELECTRONICS, INC
5757 RAVENSWOOD RD. FT. LAUDERDALE FL 33312

**LABEL, RLB36 TOP CASE,
LABEL SET, CAT II**

SIZE	CODE IDENT. NO.	DRAWING NO.	REV
A	18560	A1-20-1447	A
SCALE	1:1		SHEET 1 OF 1

THIS DOCUMENT AND THE DATA DISCLOSED HEREIN OR HEREWITH IS PROPERTY OF AND BELONGS TO ACR ELECTRONICS, INC. FT LAUDERDALE, FL. IT IS FURNISHED IN CONFIDENCE SOLELY FOR INFORMATIONAL PURPOSES. IT IS NOT TO BE REPRODUCED, USED OR DISCLOSED IN WHOLE OR IN PART TO ANYONE WITHOUT THE PERMISSION OF ACR.

REVISIONS			
REV	DESCRIPTION	DATE	APPROVED
A	RELEASE PER ECO 13466	7/18/08	T. MARTIN

DWG. NO. 18560
 SHT 1
 REV A
 A2-05-0135-

NOTES:

1. INTERPRET DRAWING PER IAW MIL-STD-100.
2. IDENTIFY IAW MIL-STD-130.
3. MATERIAL: RETRO-REFLECTIVE TAPE, 2" WIDE.
4. ONLY THE ITEM DESCRIBED ON THIS DRAWING WHEN PROCURED FROM THE VENDOR(S) LISTED HEREON IS APPROVED BY ACR ELECTRONICS, INC. FT. LAUDERDALE, FL FOR USE IN THE APPLICATION(S) SPECIFIED HEREON. A SUBSTITUTE ITEM SHALL NOT BE USED WITHOUT PRIOR APPROVAL BY ACR ELECTRONICS, INC.

IDENTIFICATION OF THE APPROVED SOURCE(S) OF SUPPLY HEREON IS NOT TO BE CONSTRUED AS A GUARANTEE OF PRESENT OR CONTINUED AVAILABILITY AS A SOURCE OF SUPPLY FOR THE ITEM DESCRIBED ON THE DRAWING.

5. APPROVED SOURCE(S) OF SUPPLY:
 - A. 3M - REFLECTIVE SHEETING DIVISION
ST. PAUL, MN 55144
P/N: 3810
 - B. REFLEXITE CORPORATION
NEW BRITAIN, CT 06050
P/N: FD1402 MARINE GRADE, TYPE 1

6. DIE CUT TO SIZE AND SHAPE.
7. REFERENCE DIMENSIONS FOR VENDOR INFORMATION ONLY.
8. DIE CUTS ARE FOR A1-20-1443 AND A1-20-1447 TOP CAP LABEL SETS.

UNLESS OTHERWISE SPECIFIED
ALL ANGLES ARE 90°
DIMENSIONS ARE IN INCHES

TOLERANCES ON

FRACTIONS	DECIMALS	ANGLES
±1/64	.X ±.030 .XX ±.010 .XXX ±.005	X ± 5° .X ± 2° .XX ± 1° .XXX ± 1/2° IMPLIED: ±1°

ANSI-A SOLIDWORKS

DRAWN	AJP	10/24/07
CHECKED	TM	7/18/08
ENG.	CT	7/9/08
APVD.	KLK	7/17/08

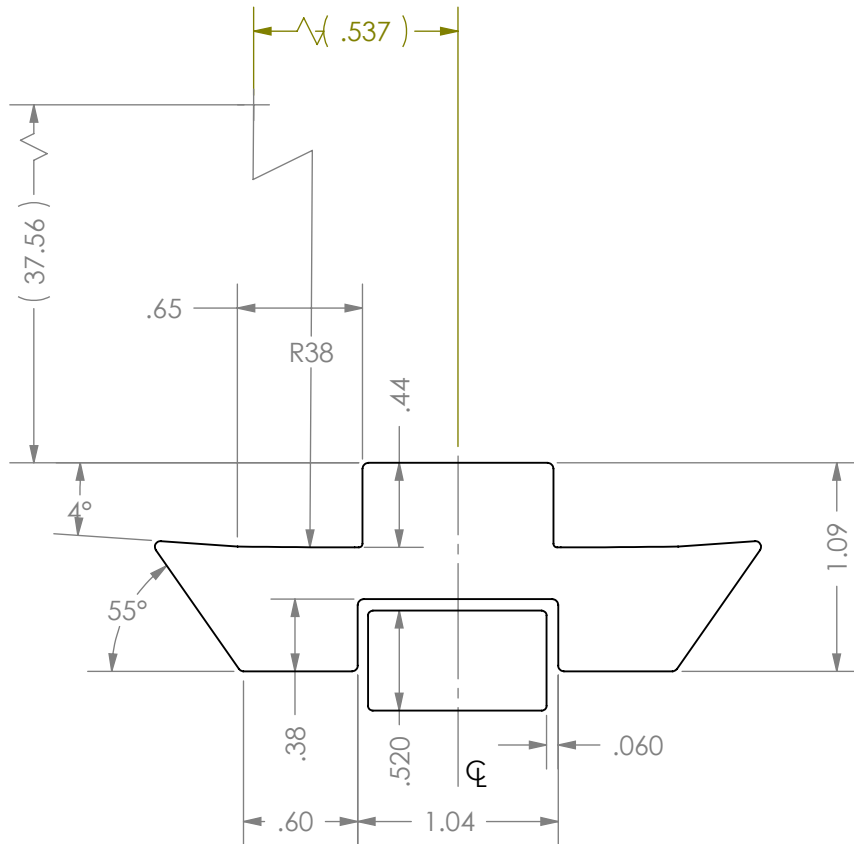
□ DENOTES REVISION CHANGE
 ⊕ DENOTES DIMENSION PLUS DRAFT ANGLE
 ⊖ DENOTES DIMENSION MINUS DRAFT ANGLE
 (XX) DENOTES REFERENCE NOTE OR DIMENSION
 (XX) DENOTES CRITICAL INSPECTION DIMENSIONS

ACR ELECTRONICS, INC
5757 RAVENSWOOD RD. FT. LAUDERDALE FL 33312

**LABELS, RETRO-REFLECTIVE
RLB-36**

SIZE	CODE IDENT. NO.	DRAWING NO.	REV
A	18560	A2-05-0135-	A

SCALE 1:1 SHEET 1 OF 5



DASH 1

SIZE A	CODE IDENT. NO. 18560	DRAWING NO. A2-05-0135-	REV A
SCALE 1:1		SHEET 2	OF 5

18560

DWG. NO.

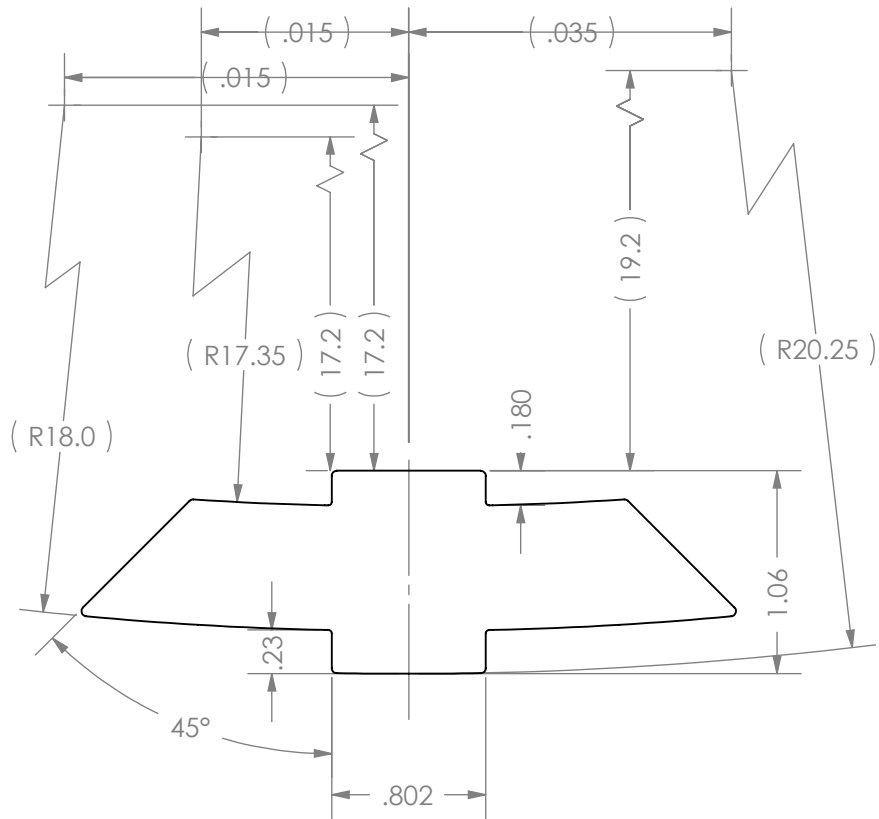
A2-05-0135-

SHT

3

REV

A



DASH 2

SIZE A	CODE IDENT. NO. 18560	DRAWING NO. A2-05-0135-	REV A
SCALE 1:1		SHEET 3	OF 5

18560

DWG. NO.

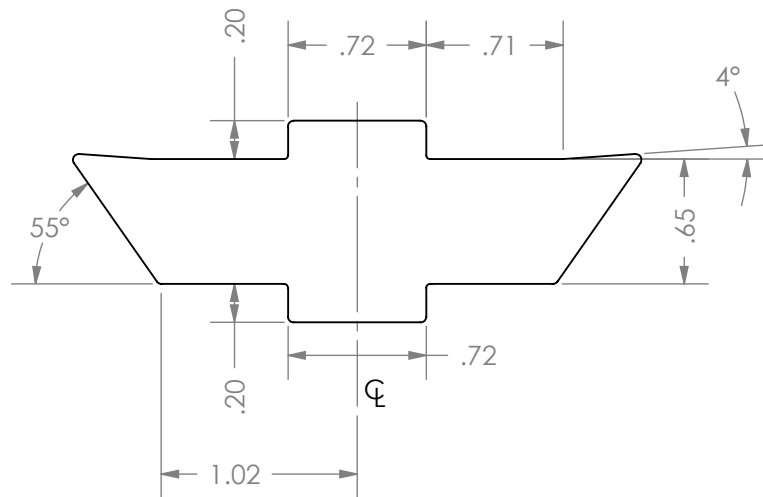
A2-05-0135-

SHT

4

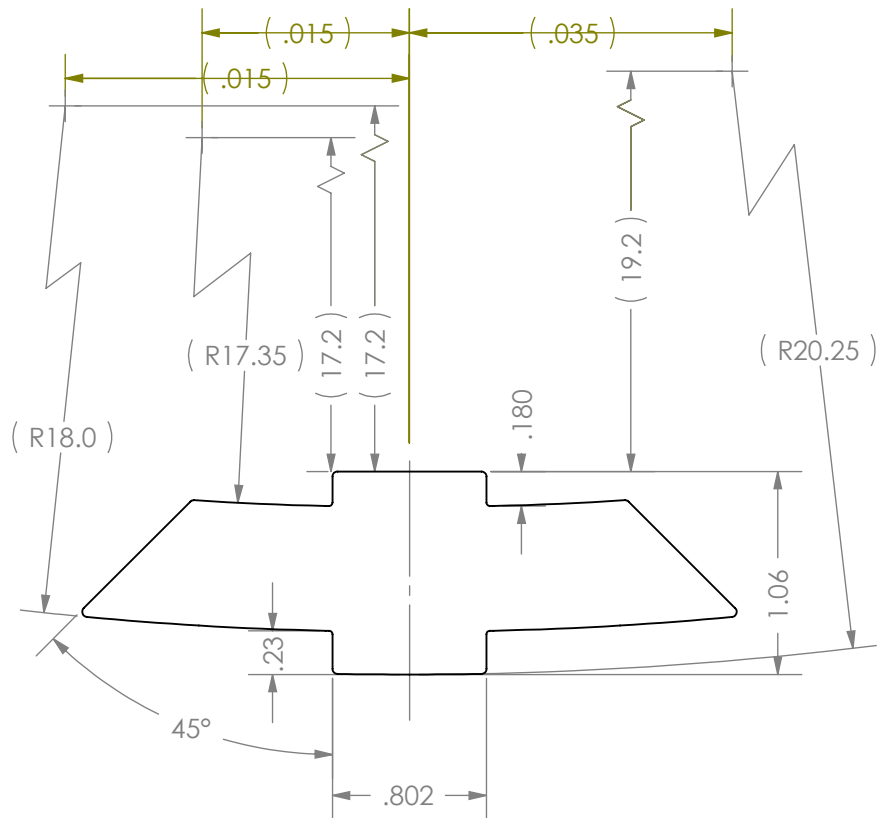
REV

A



DASH 3

SIZE A	CODE IDENT. NO. 18560	DRAWING NO. A2-05-0135-	REV A
SCALE 1:1		SHEET 4	OF 5



DASH 4

SIZE A	CODE IDENT. NO. 18560	DRAWING NO. A2-05-0135-	REV A
SCALE 1:1		SHEET 5	OF 5

THIS DOCUMENT AND THE DATA DISCLOSED HEREIN OR HEREWITH IS PROPERTY OF AND BELONGS TO ACR ELECTRONICS, INC. FT LAUDERDALE, FL. IT IS FURNISHED IN CONFIDENCE SOLELY FOR INFORMATIONAL PURPOSES. IT IS NOT TO BE REPRODUCED, USED OR DISCLOSED IN WHOLE OR IN PART TO ANYONE WITHOUT THE PERMISSION OF ACR.

DWG. NO. 18560
 SHT 1 REV E
 A1-20-1007-

REVISIONS				
REV	DESCRIPTION	DATE	APPROVED	
A	RELEASE PER ECO 9451	7/22/99	T. MARTIN	
B	ECO 9512	8/24/99	T. MARTIN	
C	ECO 10624 M/F WAS A1-20-1003, ONE STEP PER PG.	11/20/02	Y.K	T. MARTIN
D	ECO 11677 CORRECTED LABEL CONTENT, 8TH LABEL WAS HEX ID LABEL, MAKE FROM WAS A1-20-1143, SETS WERE 2/PG. MONTH/YEAR WAS MM/YY.	3/25/05	D.P	T. MARTIN
E	ECO 13400 CHANGED TITLE TO LABEL, HEX ID RLB-32, 33, 35 & 36. CHANGED SHT. 2 TO NO DASH US. ADDED SHT. 3 DASH 1 AUSTRALIA. ADDED SHT. 4 DASH 2 CANADA. ADDED FPR 101.EXE TO SHT. 5 NOTE 3. ADDED DASH DESCRIPTIONS CHART TO SHT. 5	3/15/08	FD	T. MARTIN

UNLESS OTHERWISE SPECIFIED ALL ANGLES ARE 90° DIMENSIONS ARE IN INCHES TOLERANCES ON FRACTIONS DECIMALS ANGLES ±1/64 .X ±.030 ±1/2° .XX ±.010 .XXX ±.005	DRAWN	L. HALL	6/22/99
	CHECKED	T.M	7/22/99
	ENG.	J.W	7/22/99
	APVD.	J.F.F	7/22/99
	⬡	DENOTES REVISION CHANGE	
	⊕	DENOTES DIMENSION PLUS DRAFT ANGLE	
	⊖	DENOTES DIMENSION MINUS DRAFT ANGLE	
	(XX)	DENOTES REFERENCE NOTE OR DIMENSION	
	(XX)	DENOTES CRITICAL INSPECTION DIMENSIONS	

ACR ELECTRONICS, INC
5757 RAVENSWOOD RD. FT. LAUDERDALE FL 33312
LABEL, HEX ID
RLB-32,33,35 & 36

SIZE	CODE IDENT. NO.	DRAWING NO.	REV
A	18560	A1-20-1007-	E
SCALE	SHEET		OF
1:1	1		5

NOTES:

- Ⓛ 1. MATERIAL: MAKE FROM A1-20-1246
- 2. PRINTING SHALL BE BLACK.
- 3. PRINTED DATA SHALL BE GENERATED BY PROGRAM "FPR100.EXE"/ "FPR101.EXE". FOLLOW PROGRAM PROMPTS FOR PROPER LABEL SELECTION.
- Ⓛ 4. LABELS SHALL BE PROVIDED EIGHT PER SET, FOUR SETS PER PAGE. EACH SET SHALL CONTAIN UNIQUE DATA.
- 5. IDENTIFY BULK PACKAGING WITH ACR PART NUMBER.
- 6. "YY" IS LAST 2 DIGITS OF THE CURRENT YEAR. "MMM" IS CURRENT MONTH + 1.

DASH	DESCRIPTION
NO	LABEL, HEX ID U.S.
-1	LABEL, HEX ID AUSTRALIA
-2	LABEL, HEX ID CANADA

SIZE A	CODE IDENT. NO. 18560	DRAWING NO. A1-20-1007-	REV E
SCALE 1:1		SHEET 5	OF 5