


18560 DWG. NO. A1-20-1057-
 SHEET 1 REV A

THIS DOCUMENT AND THE DATA DISCLOSED
 HEREIN OR HEREWITH IS PROPERTY OF AND
 BELONGS TO ACR ELECTRONICS, INC. FT
 LAUDERDALE, FL. IT IS FURNISHED IN
 CONFIDENCE SOLELY FOR INFORMATIONAL
 PURPOSES. IT IS NOT TO BE REPRODUCED,
 USED OR DISCLOSED IN WHOLE OR IN PART
 TO ANYONE WITHOUT THE PERMISSION OF ACR.

REVISIONS				
ZONE	REV	DESCRIPTION	DATE	APPROVED
	A	RELEASE PER ECO		

UNLESS OTHERWISE SPECIFIED ALL ANGLES ARE 90° DIMENSIONS ARE IN INCHES TOLERANCES ON			DRAWN M.P. 3/30/2001 CHECKED ENG. APVD.
FRACTIONS ± 1/64	DECIMALS .X ± .030 .XX ± .010 .XXX ± .005	ANGLES ± 1/2°	○ DENOTES REVISION CHANGE ⊕ DENOTES DIMENSION PLUS DRAFT ANGLE ⊖ DENOTES DIMENSION MINUS DRAFT ANGLE
ANSI-A	SOLIDWORKS		

ACR ELECTRONICS, INC <small>5757 RAVENSWOOD RD. FT. LAUDERDALE FL 33312</small>			
LABEL, BOTTOM CASE, RLB-35			
SIZE A	CODE IDENT. NO. 18560	DRAWING NO. A1-20-1057-	REV A
SCALE		SHEET 1	OF 4



ACR Electronics, Inc.
Fort Lauderdale, FL 33312 USA
www.acrelectronics.com
Owners Manual on Website
Le manuel du propriétaire
sur Website.

Notice to Public:
 1. Do not remove EPRB, if found
 2. Report position to Coast Guard or appropriate authority

Attention :
 1. Ne pas déplacer l'epib si vous la trouvez
 2. Communiquer sa position aux gardes côtes ou aux autorités appropriées.

Emergency Disabling: Remove 4 top case screws and disconnect battery.
 Invalider De secours: Retirez 4 vis supérieures de cas et débrancher la batterie.

Warranty void if opened
Garantie annulée en cas d'ouverture

DATE:

Replace battery after use or by date shown
 Remplacez pile après usage ou par date indiquée

Consult the manual for proper care
 Consultez le manuel pour une bonne manipulation

Operation: 48 hrs @
 -40° to +55°C (-40° to +131°F)

Storage:
 -40° to +70°C (-40° to +158°F)

Se déploie dans l'eau
 libère des pattes de fixation

Activities: Out of bracket in water
 Distance de survie comprise 1 m

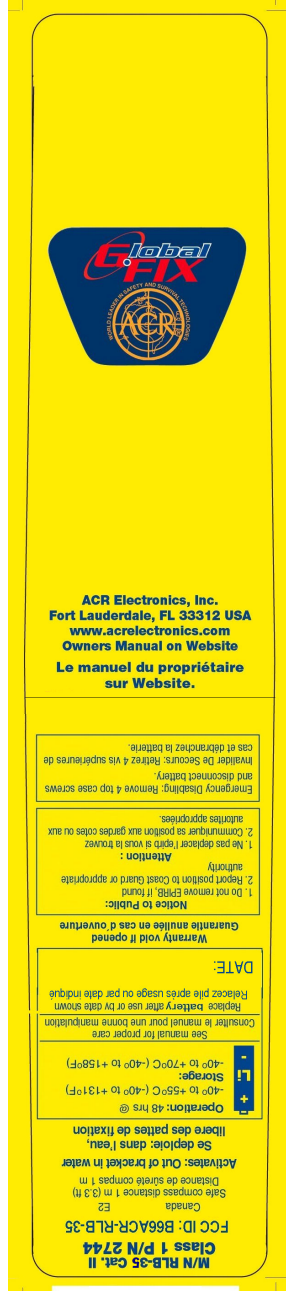
Canada
 Sale compass distance 1 m (3.3 ft)

FCC ID: B66A-CR-RLB-35
Class 1 P/N 2742
M/N RLB-35 Cat. 1

TOP

DASH 1
 TEXT DETAIL LAYOUT

SIZE A	CODE IDENT. NO. 18560	DRAWING NO. A1-20-1057-	REV A
SCALE	SHEET 2 OF 4		

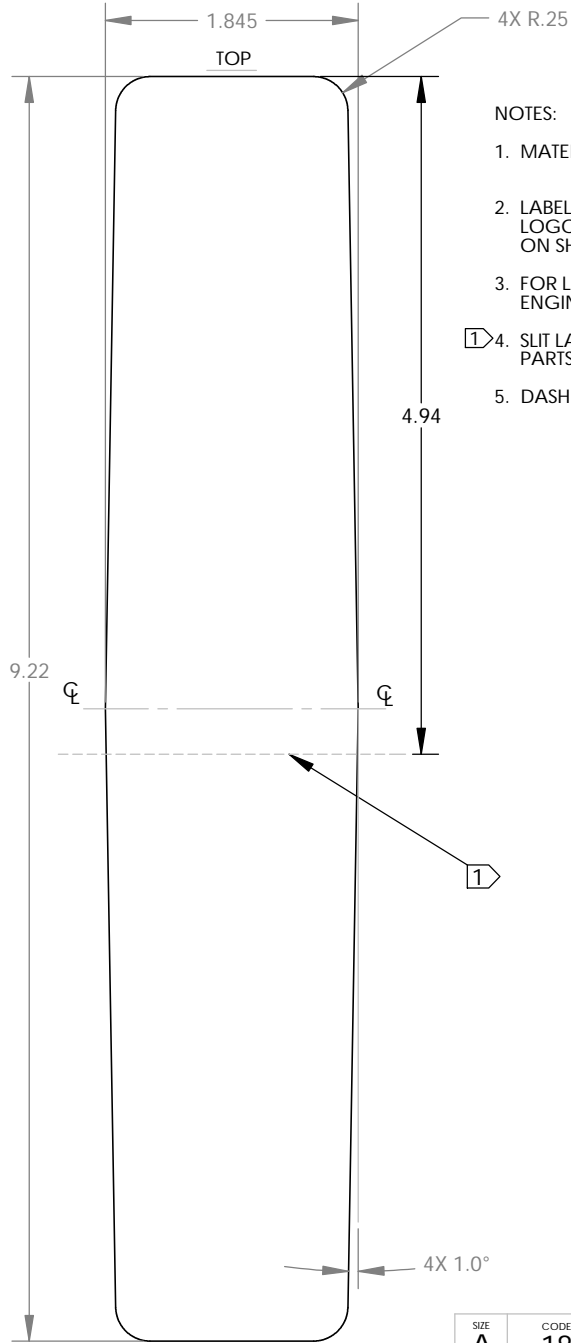


TOP

DASH 2
 TEXT DETAIL LAYOUT

SIZE A	CODE IDENT. NO. 18560	DRAWING NO. A1-20-1057-	REV A
SCALE	SHEET 3 OF 4		

18560 DWG. NO. A1-20-1057-
SHT 4 REV A



NOTES:

1. MATERIAL: .003 THICK, DEAD SOFT ALUMINUM ALUMAPRINT PHOTOMETAL PROCESS.
2. LABEL SHOULD ALWAYS BE POSITIONED WITH GLOBAL FIX LOGO TOWARD THE TOP PORTION OF LABEL AS SHOWN ON SHEETS 2 & 3.
3. FOR LABEL DESIGN LAYOUT & COLOR ARRANGEMENT, SEE ENGINEERING SAMPLE.
4. SLIT LABEL SO THAT IT MAY BE SEPARATED INTO TWO PARTS WHEN REMOVED FROM BACKING.
5. DASH INFORMATION:

DASH No.	LABEL DESCRIPTION
1	CAT. I, P/N 2742
2	CAT. II, P/N 2744

SIZE A	CODE IDENT. NO. 18560	DRAWING NO. A1-20-1057-	REV A
SCALE 1:1	SHEET 4 OF 4		