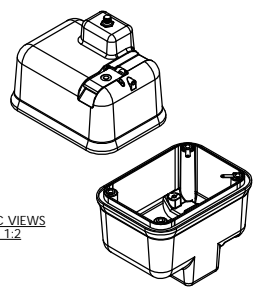
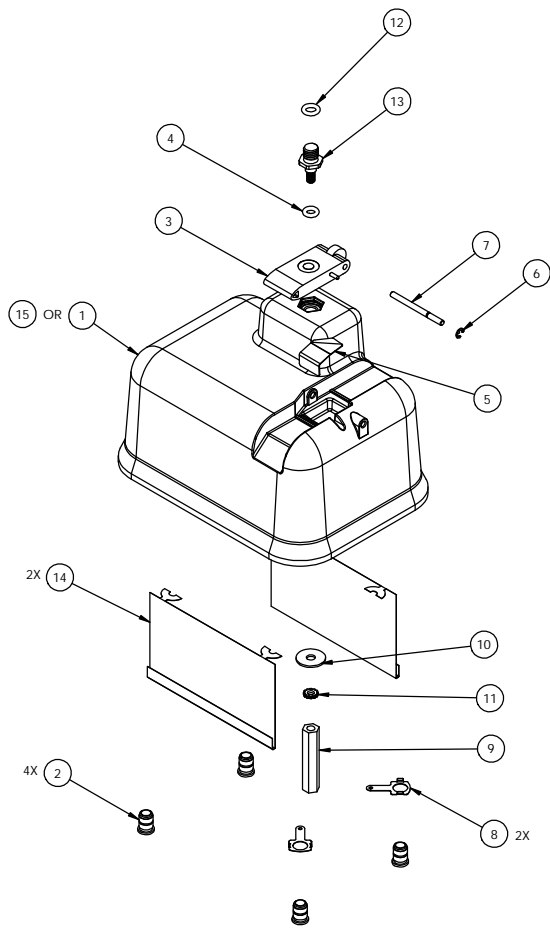
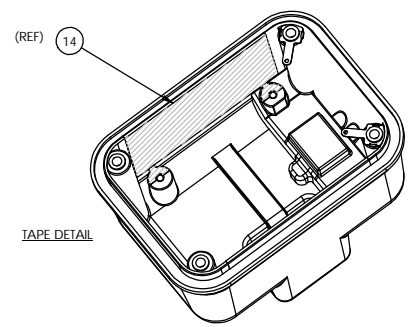
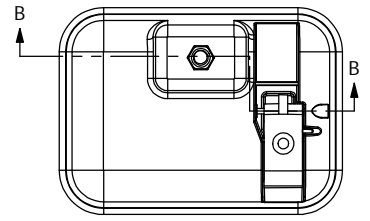
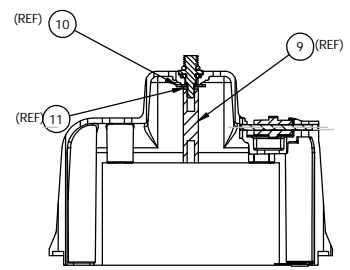


THIS DOCUMENT AND THE DATA DISCLOSED HEREIN OR HEREWITH IS PROPERTY OF AND BELONGS TO ACR ELECTRONICS, INC. IT IS UNLAWFUL TO REPRODUCE OR DISSEMINATE IT OR TO MAKE IT PUBLIC IN ANY MANNER WITHOUT THE PERMISSION OF ACR.

- NOTES:  
 1. ULTRASONICALLY WELD INSERTS (ITEM 2) TO TOP CAP (ITEM 1 OR 15) IN PLACES WHERE SHOWN.  
 2. APPLY COPPER TAPE (ITEM 14) TO INNER WALLS OF TOP CASE . MAKE SURE TO APPLY EXCESS TAPE OVER SCREW BOSSES AS SHOWN IN TAPE DETAIL.



DASH INFORMATION	
DASH No.	DESCRIPTION
1	RLB-35, CAT. I
2	RLB-35, CAT. II

QTY	DASH 2 QTY	DASH 1 QTY	ITEM NO.	PART OR IDENTIFYING NO.	NOMENCLATURE OR DESCRIPTION	MATERIAL & SPECIFICATION
1	-	15	A1-18-1780-2		CASE, TOP, PAD PRINTED, CAT. II	
2	2	14	A2-05-0024-4		TAPE, COPPER, 2" WIDE	3" CUT LENGTH
1	1	13	A1-17-1288		ANTENNA BASE	
1	1	12	A1-05-0001-25		O-RING, SILICONE, .143 X .280	
1	1	11	MS5535-58		WASHER, EXTERNAL TOOTH, #6	
1	1	10	A1-05-0659-5		WASHER, SS, 15310, SODIC, DOWNTICK	
1	1	9	A1-05-0683-3225		STANDOFF, HEX, FEMALE/FEMALE	
2	2	8	A1-05-0727		LUG, WIRE	
1	1	7	A1-17-1300		PIN, SWITCH, ELECTROPOLISHED	
1	1	6	A1-05-0383		RETAINING RING	
1	1	5	A1-17-1301		SPRING, SWITCH	
1	1	4	A1-05-0001-47		O-RING, SILICONE, .176 X .316	
1	1	3	A3-06-2084		SWITCH, CAM	
4	4	2	A1-05-0744-832		INSERT, BRASS, #8-32	
-	1	1	A1-18-1780-1		CASE, TOP, PAD PRINTED, CAT. I	

LIST OF MATERIALS OR PARTS LIST

UNLESS OTHERWISE SPECIFIED: ALL ANGLES ARE 90° DIMENSIONS ARE IN INCHES TOLERANCES ON	DIMEN. M.P. 6/26/2001 CHECKED _____ ENG. _____ DESIGNED _____ DENOTES REVISION CHANGE DENOTES DIMENSION PLUS DRAFT ANGLE DENOTES DIMENSION MINUS DRAFT ANGLE	ACR ELECTRONICS, INC 5757 BAVENWOOD RD. FT. LAUDERDALE, FL 33312 <b>TOP CASE ASSEMBLY,          GLOBALFIX 406/RLB-35</b>
REACTIONG: .1564 DECIMALS: X ± .030 ANGLES: .000 ± .005	DASH NO. 18560 SCALE: 1:1	DASH NO. A3-06-2202- SCALE: 1:1