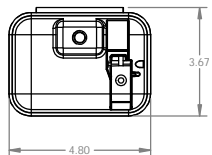


18560	REV	A3-06-2200-	SAT	1	REV	A	1
REVISIONS							
ZONE	REV	DESCRIPTION	DATE	APPROVED			
A		RELEASE PER ECO					

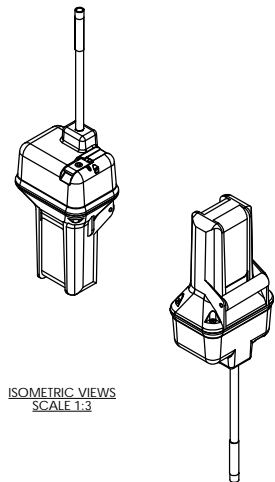
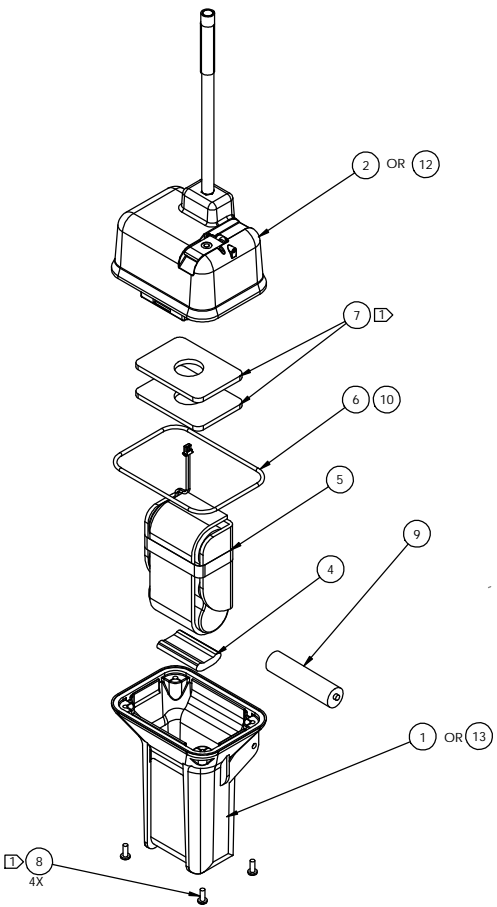
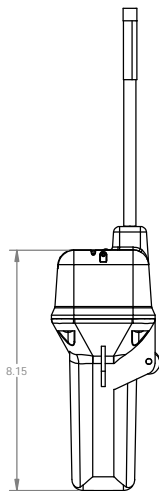
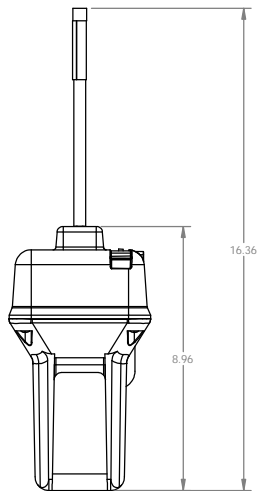
THIS DOCUMENT AND THE DATA DISCLOSED HEREIN OR HEREBY IS PROPERTY OF AND BELONGS TO ACR ELECTRONICS, INC. IT IS UNLAWFUL TO REPRODUCE OR DISSEMINATE IT FOR INFORMATIONAL PURPOSES IF IT IS TO BE REPRODUCED, USED OR DISCLOSED IN WHOLE OR IN PART TO ANYONE WITHOUT THE PERMISSION OF ACR.

NOTES:

1. BEACON WEIGHT: 850 ±10 GRAMS
2. CONNECT CONNECTOR FROM BTRY PACK ASSY. (ITEM 5) TO PCB CONNECTOR LOCATED ON TOP CASE ASSY. (ITEM 2 OR 12) BEFORE SEALING UNIT.
3. ADD A SMALL AMOUNT OF LUBRICANT (ITEM 10) TO THE THREADS OF SCREWS (ITEM 8) AND O-RING (ITEM 6).
4. TORQUE SCREWS (ITEM 8) TO 3 IN/LB.
5. FILL IN EXPIRATION DATE ON BTRY PACK ASSY. WARNING LABEL WITH A DATE OF 5 YEARS & 4 MONTHS FROM DATE OF MANUFACTURING.
6. WATER TEST PER Y1-02-0271



OVERALL DIMENSIONS



ISOMETRIC VIEWS
SCALE 1:3

DASH INFORMATION	
DASH No.	DESCRIPTION
1	RLB-35, CAT. I
2	RLB-35, CAT. II

1	REF	QTY	ITEM NO.	PART OR IDENTIFYING NO.	NOMENCLATURE OR DESCRIPTION	MATERIAL & SPECIFICATION
1	-	13	A1-15-0262-2		BOTTOM CASE, CAT. II	
1	-	12	A3-06-2201-2		TOP CASE, ELECTRICAL ASSY., CAT. II	
REF	REF	11	Y1-02-0271		LEAKAGE TEST PROCEDURE	
1	1	10	A2-05-0087		LUBRICANT, SILICONE, (SUPER-LUBE)	
1	1	9	A3-06-2095		JANUARY ASSY	
4	4	8	MS1187-44		SCREW, PH, #8-32 x .4375L	
2	2	7	A1-18-1490		PAD, BATTERY	
1	1	6	A1-05-0001-38		O-RING, #2-245, SILICONE	
1	1	5	A3-06-1793-		ASSY., BATTERY PACK	
1	1	4	A3-06-1898-4		BALLAST ASSEMBLY, 160g	
-	1	2	A3-06-2201-1		TOP CASE, ELECTRICAL ASSY., CAT. I	
-	1	1	A1-15-0262-1		BOTTOM CASE, CAT. I	
DASH 2	DASH 1	ITEM NO.	PART OR IDENTIFYING NO.	NOMENCLATURE OR DESCRIPTION		MATERIAL & SPECIFICATION
QTY	QTY			LIST OF MATERIALS OR PARTS LIST		

UNLESS OTHERWISE SPECIFIED: ALL ANGLES ARE 90° DIMENSIONS ARE IN INCHES TOLERANCES ON:	DECIMALS ±.154	ANGLES ± 10°	DRAWN M.P. 6/26/2001	ACR ELECTRONICS, INC 5757 RAVENWOOD RD. FT. LAUDERDALE, FL 33312 FINAL ASSEMBLY, GLOBALFIX 406 / RLB-35
	CHECKED DATE	DENOTES REVISION CHANGE DENOTES DIMENSION PLUS DRAFT ANGLE DENOTES DIMENSION MINUS DRAFT ANGLE	PART OR IDENTIFYING NO. 18560	
	SCALE 1:2	REV A	DATE A3-06-2200-	