

G.top010

hpr071512

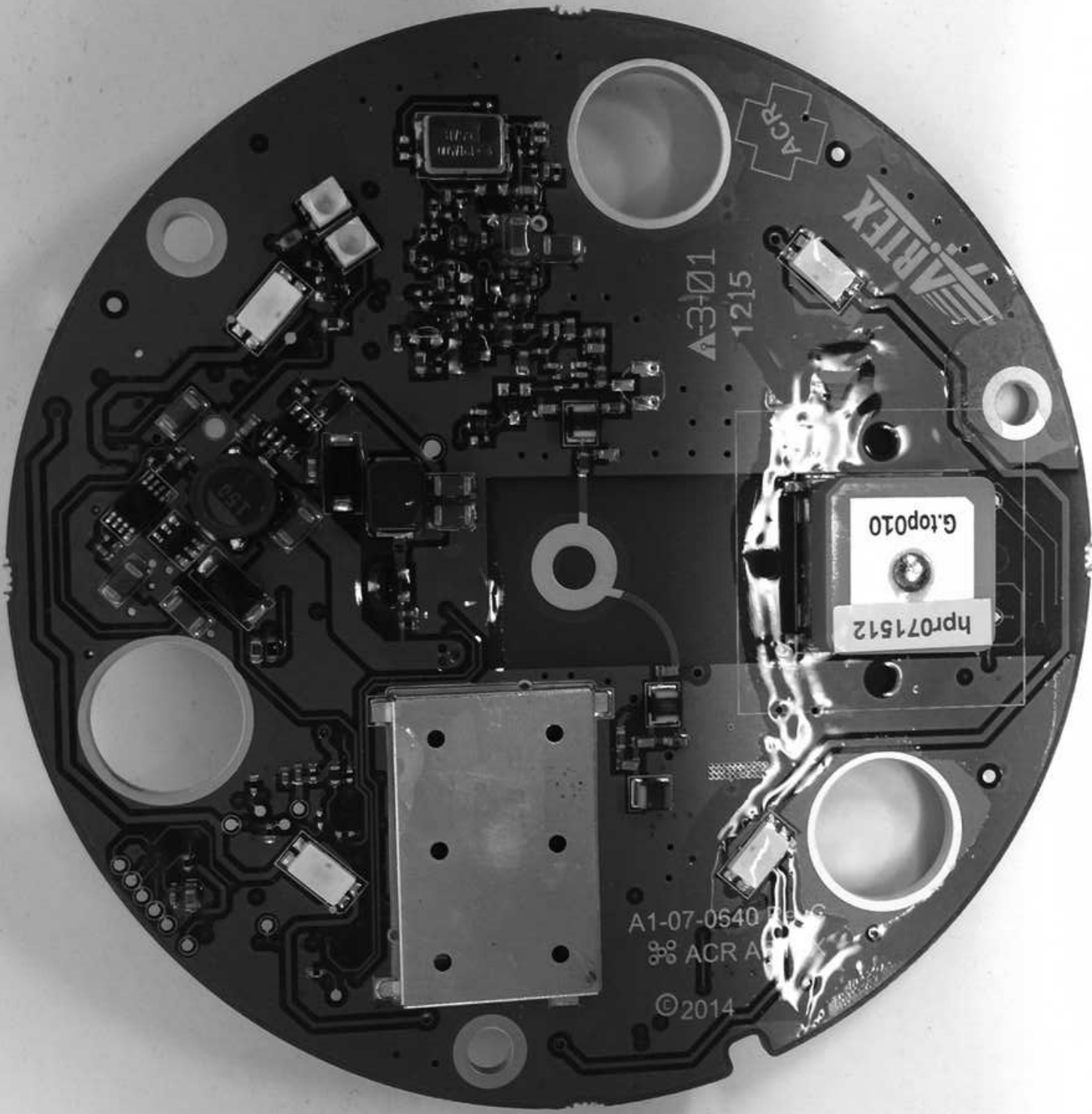
ARTEX

ACR

A-3-01  
1215

A1-07-0540 RevC  
ACR ARTEX

© 2014



ARTEX

ACR

A-3-01  
1215

G.top010  
hpr071512

A1-07-0540  
ACR A  
© 2014



**Global FIX**  
V4  
406 GPS SATELLITE EPIRB

MANUAL ACTIVATION:  
SLIDE CLEAR COVER FROM BRACKET  
TO BREAK IN WATER

1. MANUAL ACTIVATION:  
SLIDE CLEAR COVER FROM BRACKET  
TO BREAK WITH PRESSURE

**ACR**

ACR Electronics, Inc.  
Ft. Lauderdale, Florida



TO SELF TEST: PRESS TEST  
BUTTON FOR 1 SECOND



**TO SELF TEST: PRESS TEST  
BUTTON FOR 1 SECOND**  
**TO GPS TEST: PRESS TEST  
BUTTON FOR 6 SECONDS**



0168  
15



Keep away from magnetic storms  
Compass safe distance: 100  
WARNING: Test only during the first  
minutes of the hour  
Warranty void if opened

FCC ID: B66ACR-RLBH1  
IC: 1322A-RLBH1

Rechargeable Battery Pack  
Lithium-Ion  
Do not open, damage,  
short circuit or recharge  
with a current of a false  
charge. Do not use if the  
battery is swollen (IEC 60335-2-107:2016)

**48 HOUR  
MINIMUM  
OPERATION**

EPIRB CLASS 2  
Operation:  
-20°C to +55°C  
-4°F to +131°F

Storage:  
-30°C to 70°C  
-22°F to 158°F

Battery Expiry:  
**08/2021**  
Date of Manufacture:  
**08/2021**

WARNING! USE ONLY IN  
SITUATIONS OF GRAVE AND  
IMMINENT DANGER



**BATTERY  
REPLACEMENT  
PART NUMBER**

WARNING! RECHARGE  
LIFESAVING DEVICE  
UNAUTHORISED  
REPLACEMENT  
PARTS ARE NOT  
RECOMMENDED  
FOR USE. VISIT  
WWW.ACR-RLBH.COM







ACR

ACR Electronics, Inc.  
Ft. Lauderdale, Florida