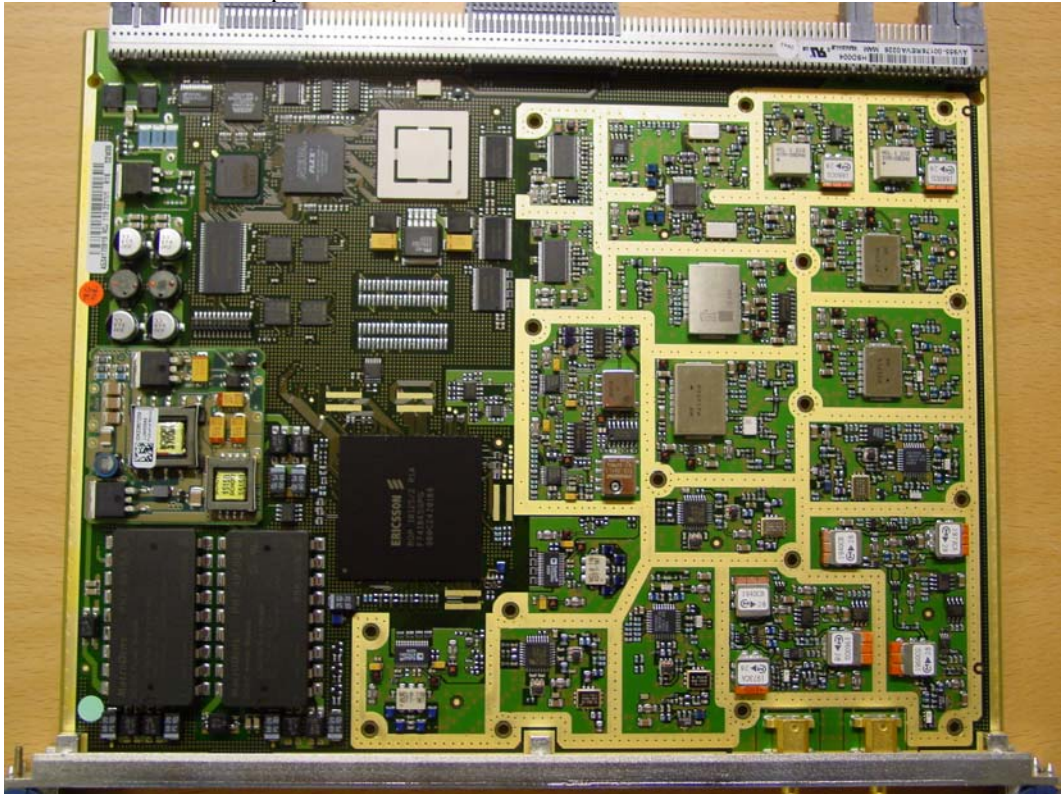


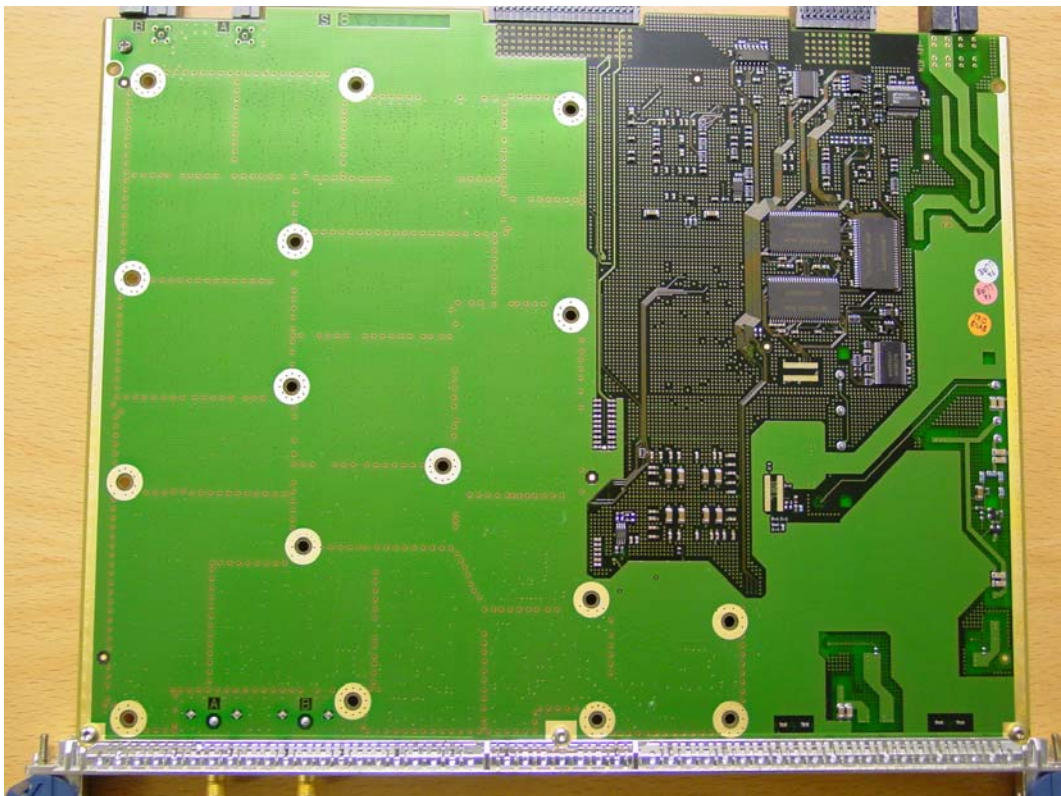
FCC ID: B5KPROJ1192211-1

Transceiver Unit, ROJ 119 2211/1, R1B

Main board- PCB component side



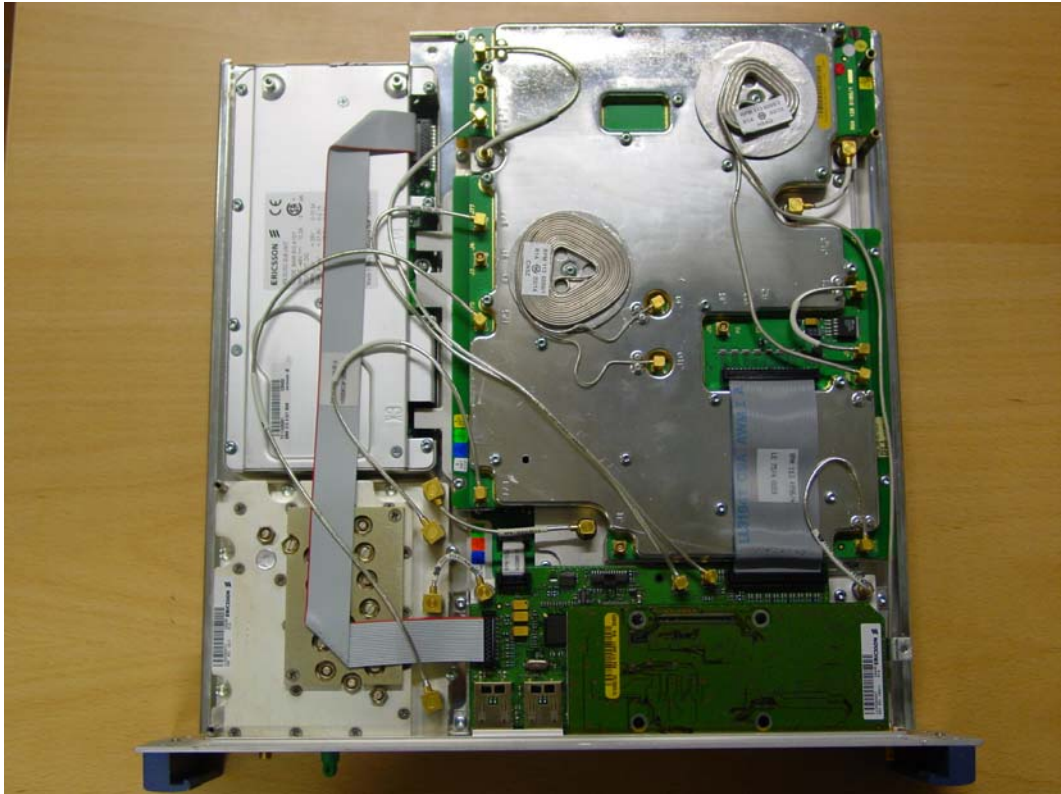
Main board- PCB rear side



FCC ID: B5KPROJ1192211-1

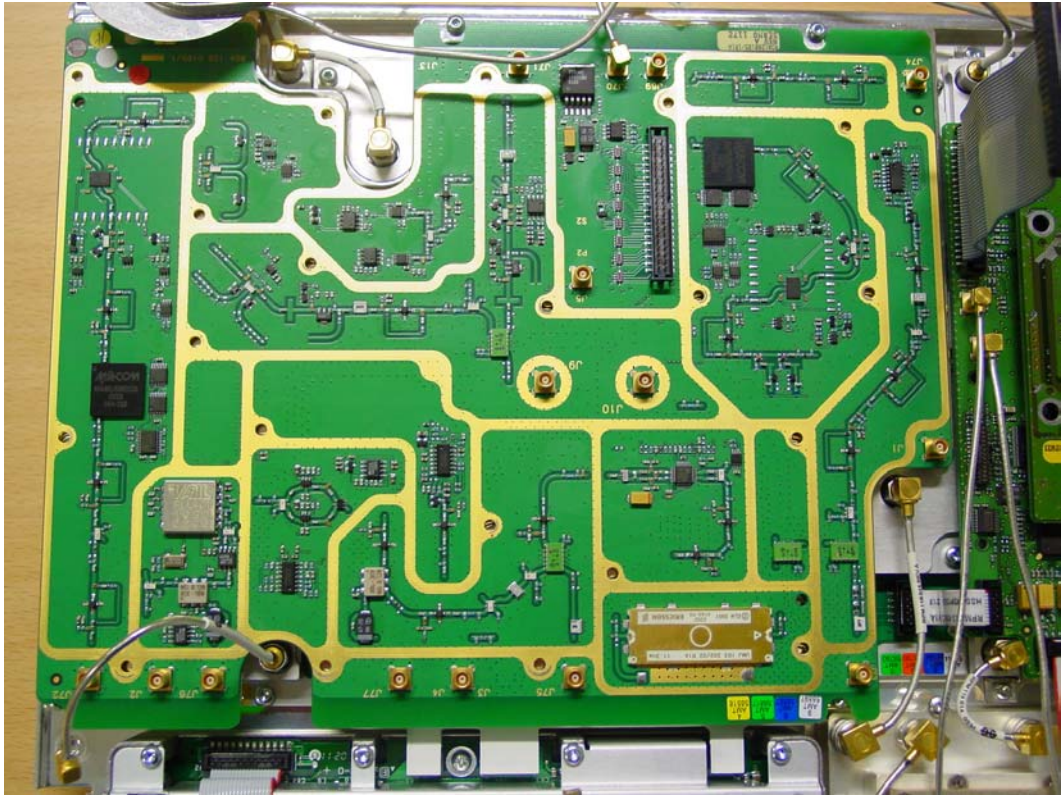
Amplifier Unit / MCPA, KRB 90102/3, R1A

Printed Board MCPA Radio Control ROA 128 0185/1 with lid

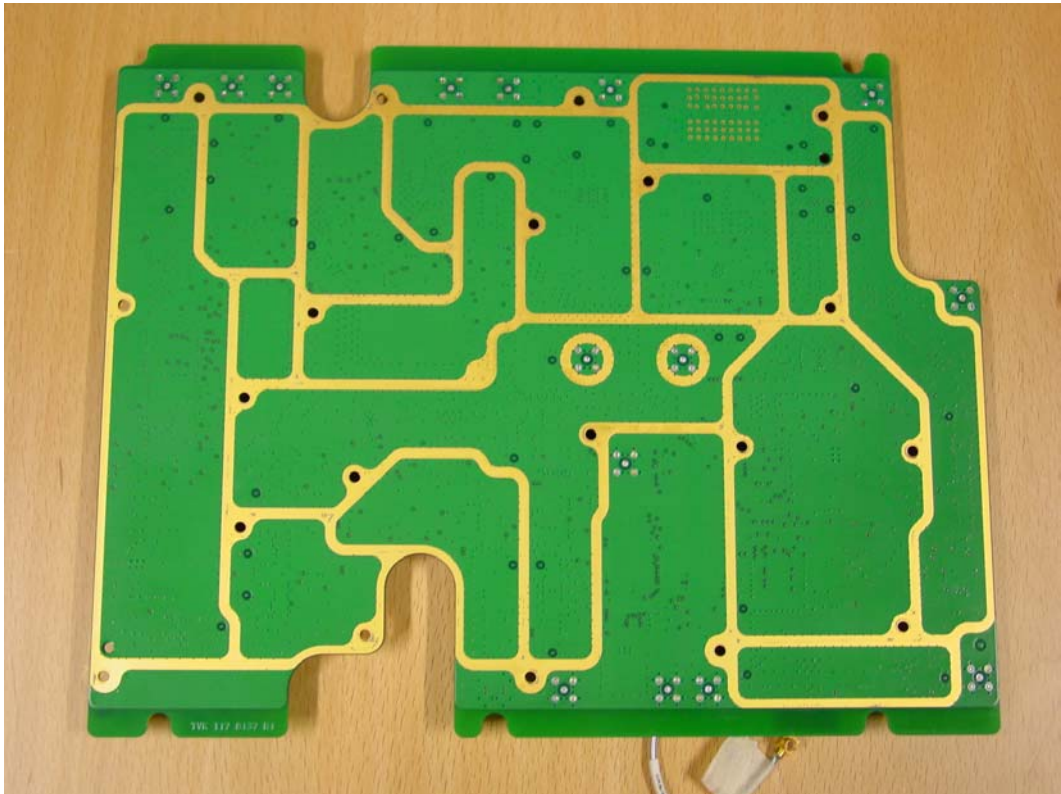


FCC ID: B5KPROJ1192211-1

Printed Board MCPA Radio Control ROA 128 0185/1

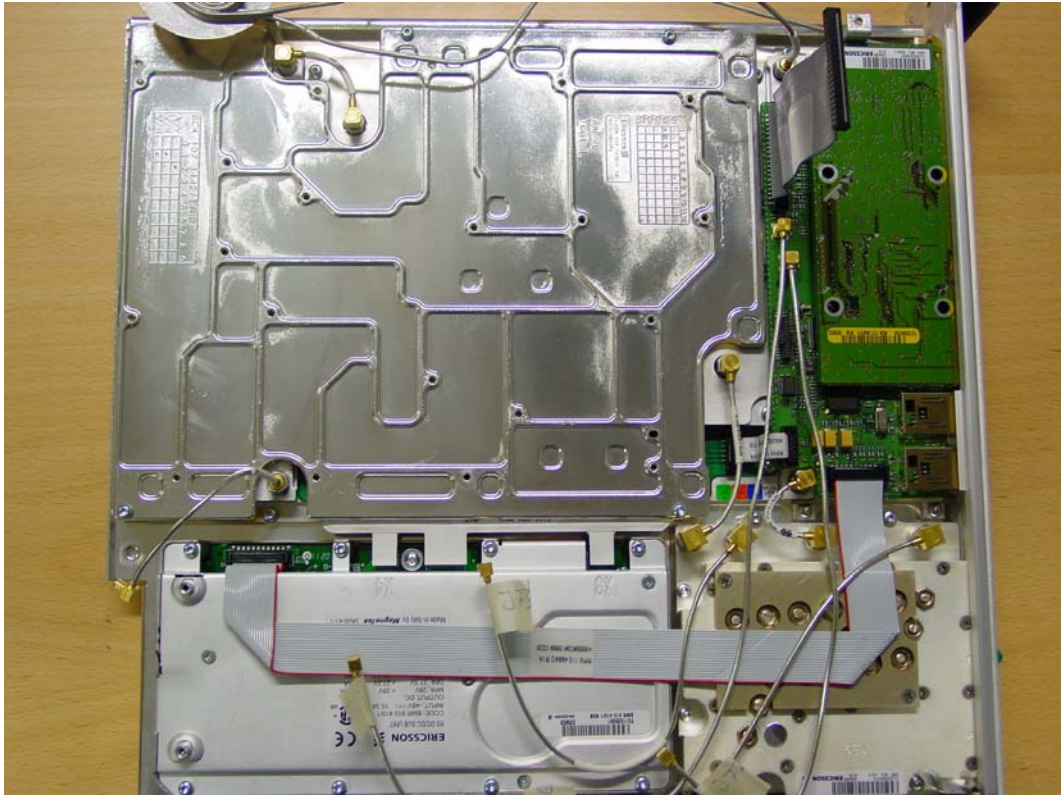


Backside Printed Board MCPA Radio Control ROA 128 0185/1



FCC ID: B5KPROJ1192211-1

Backside lid for Printed Board MCPA Radio Control ROA 128 0185/1

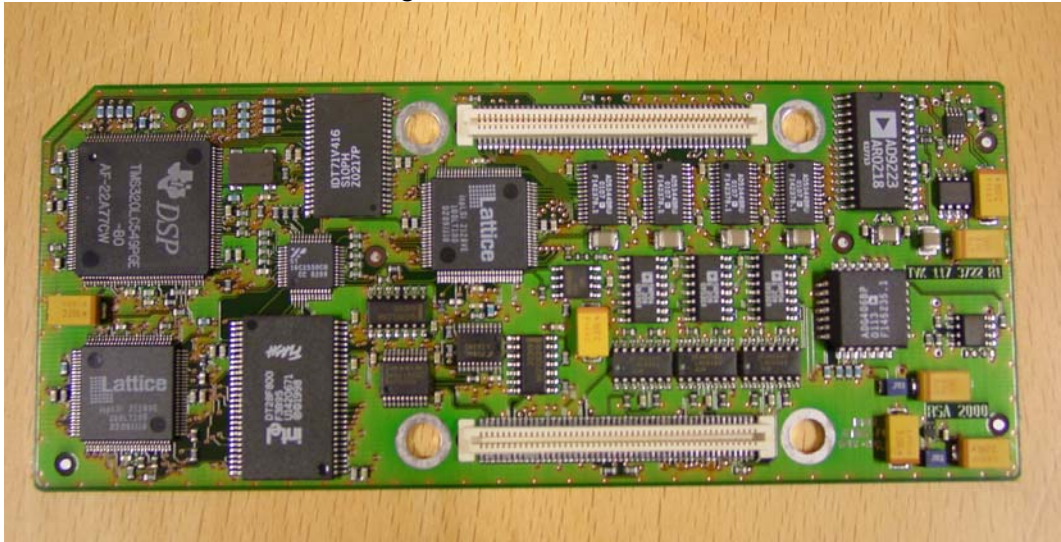


Printed Board MCPA Control Stage 1 ROA 117 8633/1

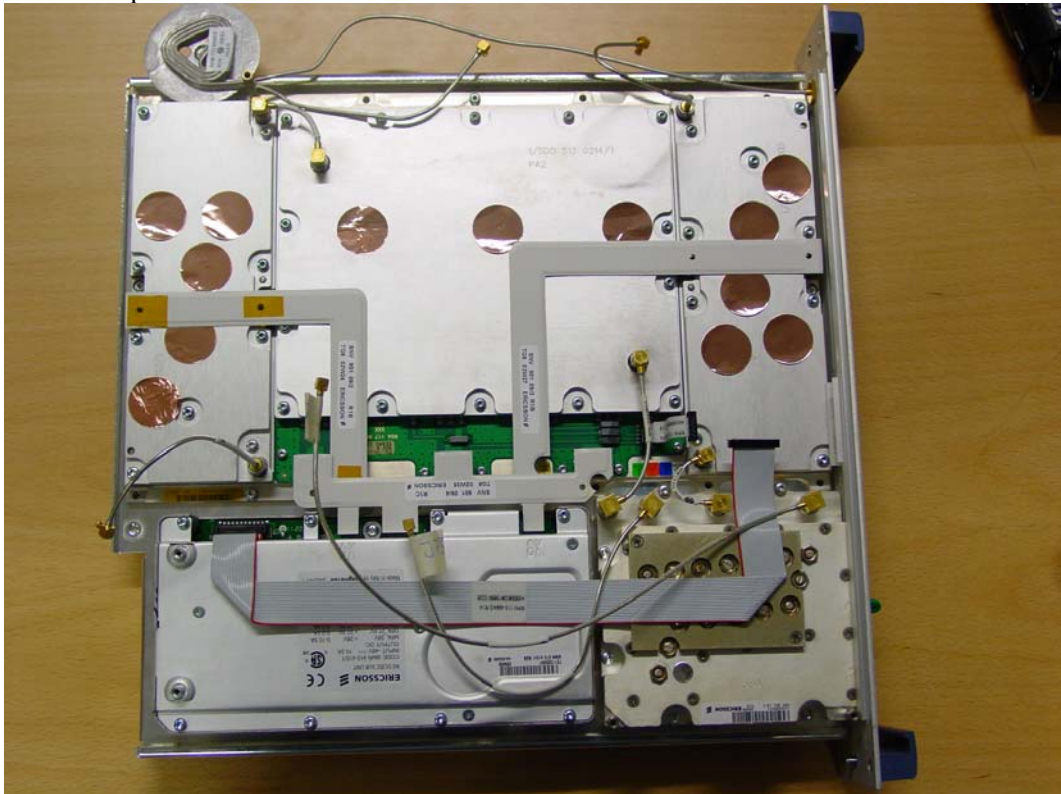


FCC ID: B5KPROJ1192211-1

Printed Board MCPA Control Stage 1 ROA 117 8497/1



Power Amplifier Block KRY 901 001/1 with lid



REPORT

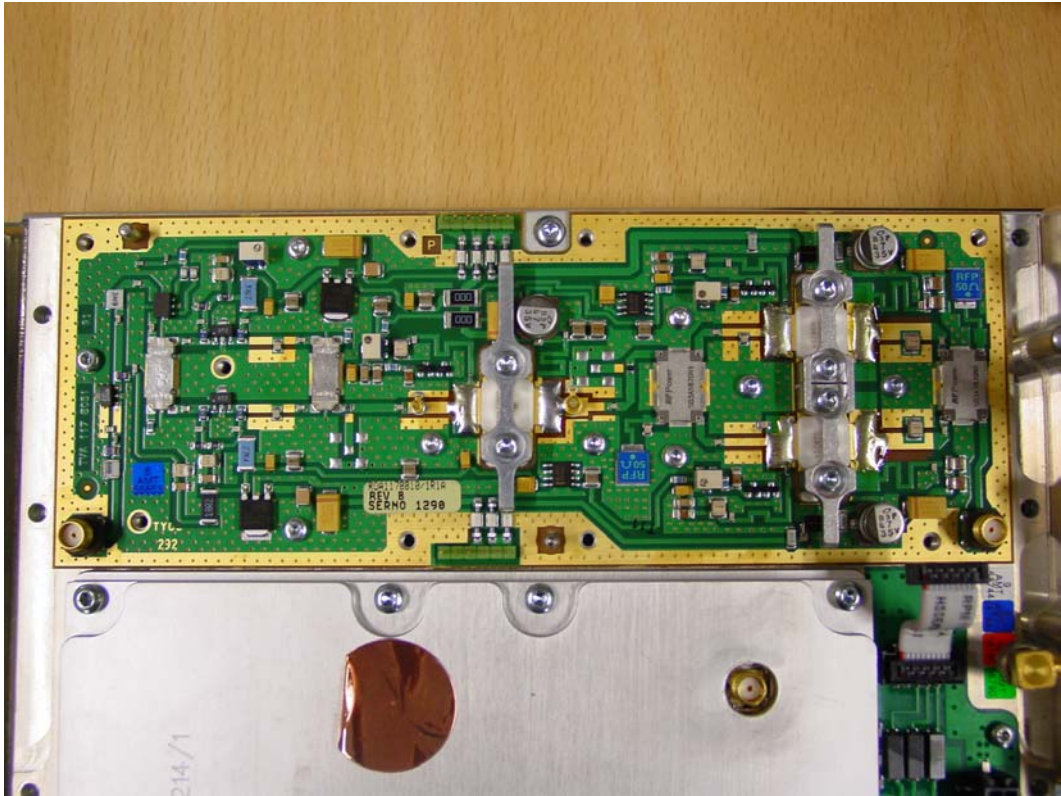
Datum/Date
2002-10-25

Beteckning/Reference
F219009-F24

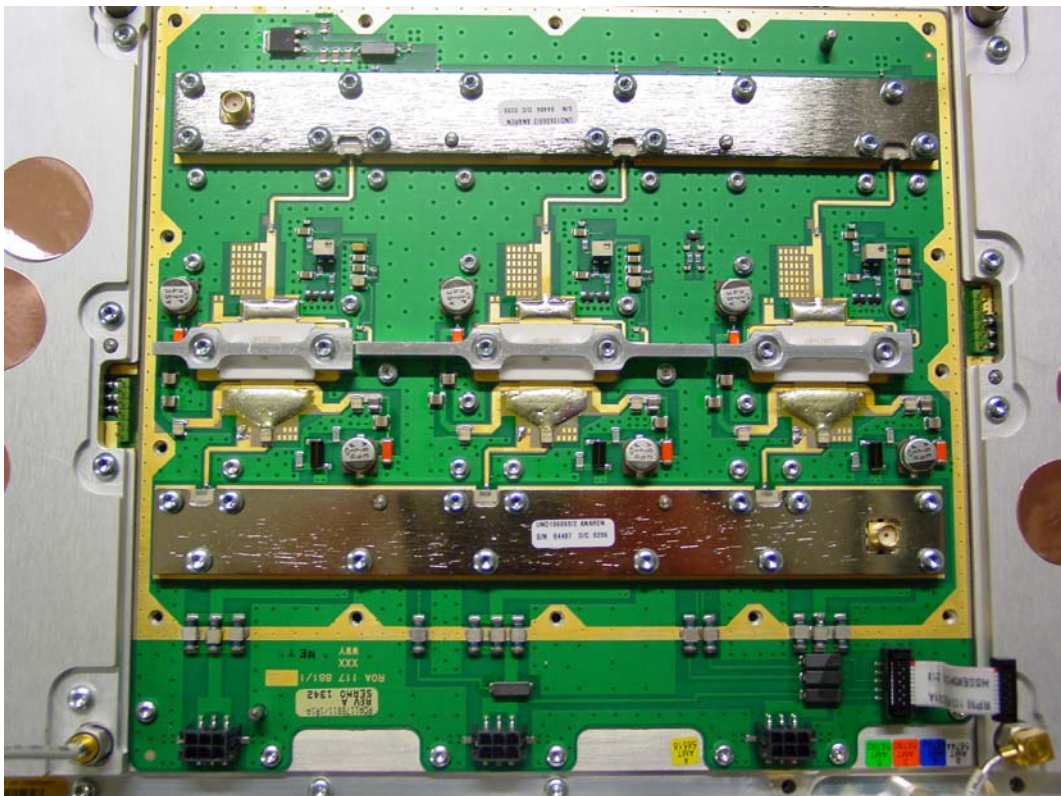
Sida/Page
6 (7)
Encl. 9

FCC ID: B5KPROJ1192211-1

Power Amplifier Block KRY 901 001/1 with Printed Board MCPA Second Stage
ROA 117 8810/1



Power Amplifier Block KRY 901 001/1 with Printed Board MCPA Third Stage
ROA 117 8811/1



REPORT

Datum/Date
2002-10-25

Beteckning/Reference
F219009-F24

Sida/Page
7 (7)
Encl. 9

FCC ID: B5KPROJ1192211-1

Power Amplifier Block KRY 901 001/1 with Printed Board MCPA First Stage
ROA 117 8766/1

