

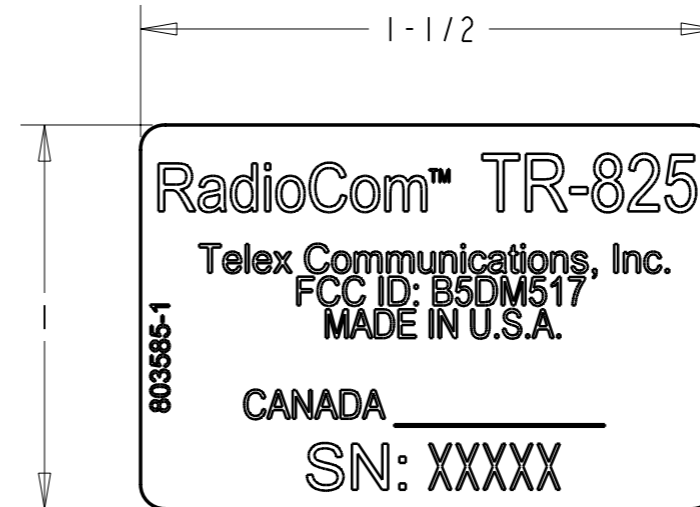
803585-1

This drawing, written description or specification represents a proprietary product of TELEX, Lincoln, NE., and shall not be released, disclosed, nor duplicated without the written permission of TELEX

REVISIONS				
CHG NO	LTR	DESCRIPTION	DATE	APPD
-----	PA	PRELIMINARY RELEASE FOR PRODUCTION	28-AUG-02	---

NOTES:

- SERIAL NUMBER(SN) TO START AT 1000.
- LINCOLN DESIGN ENGINEERING TO APPROVE LABEL LAYOUT.



**PRELIMINARY PRINT  
INFORMATION SUBJECT TO CHANGE**

		QTY	DESCRIPTION	ITEM	PART NO.	SPECIFICATION	
			UNSPECIFIED LIMITS OF TOLERANCE	DATE	28-AUG-02	<p style="text-align: center;">Telex® TELEX COMMUNICATIONS INC. Lincoln Nebraska U.S.A.</p> <p style="text-align: center;">LABEL, SERIAL, TR-825</p>	
			DECIMAL: FRACTION:	DR BY	PSE		
			.X = ±.030 IN MACHINED	CHK BY			
			.XX = ±.010 IN FINISH: 64 ✓	APPD.			
			.XXX = ±.005 IN.	PROD.			
			ANGLES ±1°, BENDS ±2°	MATERIAL:		<p style="text-align: center;">L-466 1" x 1-1/2" WHITE LABEL STOCK</p>	
			STRAIGHTNESS AND/OR				
			FLATNESS .005 IN./1 IN.				
			CONCENTRICITY .010 TIR	SIZE	CODE IDENT	DWG. NO.	
			UNMARKED ANGLES, BENDS	B	57010	803585-1	
			AND INTERSECTIONS 90°	SCALE: NONE		SHEET: 1 OF 1	
NEXT ASSY.	USED ON		THREADS- EXT. CLASS 2A				
	APPLICATIONS		INT. CLASS 2B				