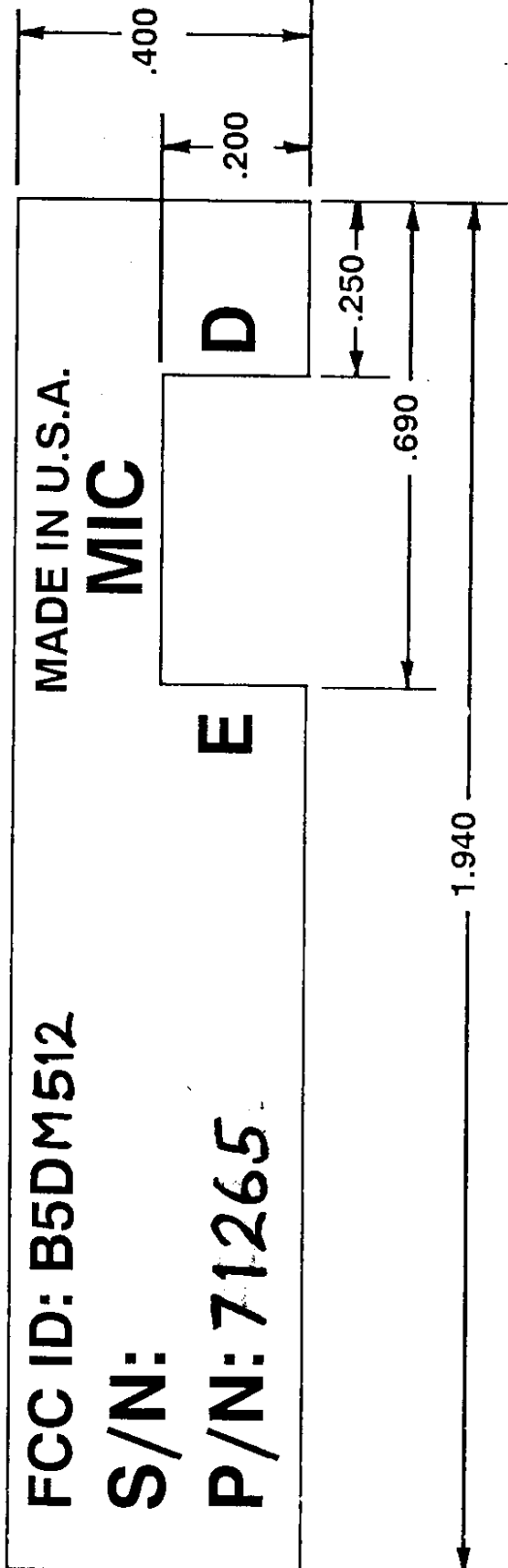


REVISIONS
 CHG. NO. LTR. DESCRIPTION DATE APPD.

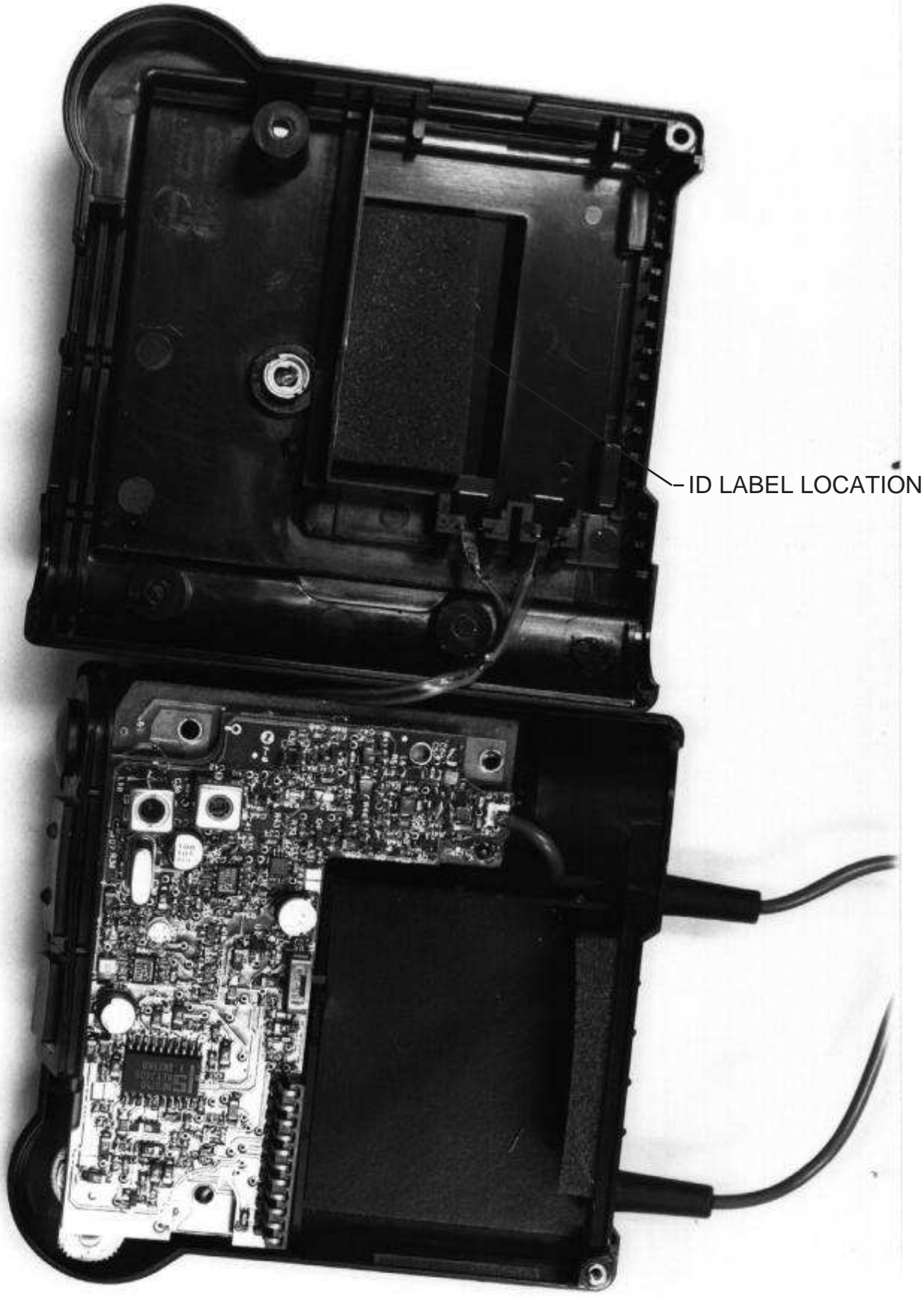


- NOTES:
- ARTWORK IS REVISION A
 - TELEX LINCOLN TO SUPPLY ARTWORK.
 - ADHESIVE: PRESSURE SENSITIVE WITH PAPER RELEASE LINER
 - MATERIAL: .002 SILVER MYLAR WITH MATTE CLEAR COAT
 - S/N TO BE SCREENED IN BY SUPPLIER. NUMERALS TO START AT 1000 AND WILL BE IN SEQUENCE AS PER TELEX SUPPLIED INFORMATION. NUMERALS TO BE 3/32" TALL.
 - COLOR: SILVER BACKGROUND WITH BLACK LETTERING

QTY.	DESCRIPTION	ITEM	PART NO.	SPECIFICATION
	DATE	7-13-99		
	DR BY	JTN		
	CHK BY			
	APPD.	JRC 7-13-99		
	PROD.			
	TOLERANCES UNLESS OTHERWISE SPECIFIED	TELEX hygain <small>TELEX COMMUNICATIONS INC LINCOLN, NEBRASKA U.S.A.</small>		
	FRACTION	TITLE		
	DECIMAL ±.010	LABEL, CASE		
	ANGLE	TR-300		
	MATL.	SIZE	CODE IDENT	DWG. NO.
	TR-300	A	57010	
	USED ON	SCALE		
	APPLICATION	SHEET 1 OF 1		

This drawing, written description or specification represents a proprietary product of TELEX, Lincoln, Nebr., and shall not be released, disclosed, used nor duplicated without the written permission of TELEX.

FCC ID: B5DM512 (TR-300)



- ID LABEL LOCATION