

ID LABEL LOCATION

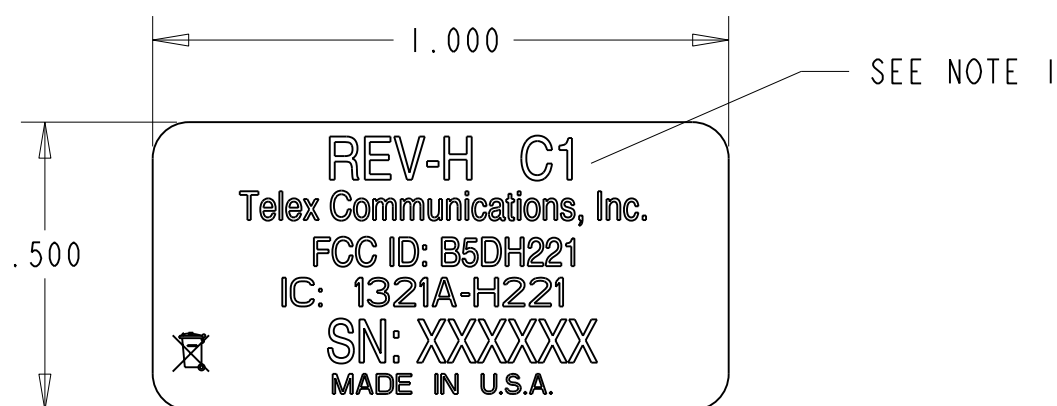
804243

This drawing, written description or specification represents a proprietary product of TELEX, Lincoln, NE., and shall not be released, disclosed nor duplicated without the written permission of TELEX.

REVISIONS				
CHG NO	LTR	DESCRIPTION	DATE	APPD
-----	02	ADDED FCC ID NUMBER	16-FEB-06	---
35-000515	A	RELEASE TO A STATUS, ADDED IC# & CE#	20-JUL-06	SBE
35-000550	B	ADDED NOTES TO ARTWORK.	05-SEP-06	SBE
35-000636	C	CHANGED IC #, ADDED WHEELIE BIN	04-DEC-06	SBE
35-000763	D	ADDED H BAND	15-MAY-07	SBE
35-000855	E	ADDED THE JAPAN BANDS	26-NOV-07	SBE
35-000892	F	ADDED C7 BAND	23-JAN-08	SBE
	G	CHANGED CE NUMBER	06-FEB-08	SBE

NOTES:

1. LETTERING IS SUBJECT TO CHANGE DEPENDING ON THE FREQUENCY GROUP (C1, C2, C3, C5, D, AND E).
2. SERIAL NUMBER(SN: XXXXXX) TO START AT 01000.
3. LINCOLN DESIGN ENGINEERING TO APPROVE LABEL LAYOUT.



PART NUMBER	MODEL	FREQUENCY GROUP
804243-C1	REV-H	C1
804243-C2	REV-H	C2
804243-C3	REV-H	C3
804243-C5	REV-H	C5
804243-D	REV-H	D
804243-E	REV-H	E
804243-H	REV-H	H
804243-JA	REV-H	JA
804243-JB	REV-H	JB
804243-C7	REV-H	C7

REV-H C1
Telex Communications, Inc.
FCC ID: B5DH221
IC: 1321A-H221
SN: XXXXXX
MADE IN U.S.A.

(-C1)

REV-H C5
Telex Communications, Inc.
FCC ID: B5DH221
IC: 1321A-H221
SN: XXXXXX
MADE IN U.S.A.

(-C5)

REV-H C2
Telex Communications, Inc.
FCC ID: B5DH221
IC: 1321A-H221
SN: XXXXXX
MADE IN U.S.A.

(-C2)

REV-H D
Telex Communications, Inc.
CE 0891
SN: XXXXXX
MADE IN U.S.A.

(-D)

REV-H C3
Telex Communications, Inc.
FCC ID: B5DH221
IC: 1321A-H221
SN: XXXXXX
MADE IN U.S.A.

(-C3)

REV-H E
Telex Communications, Inc.
CE 1588
SN: XXXXXX
MADE IN U.S.A.

(-E)

REV-H H
Telex Communications, Inc.
SN: XXXXXX
MADE IN U.S.A.

(-H)

REV-H JA
Telex Communications, Inc.
806.125 - 809.750 MHz
SN: XXXXXX
MADE IN U.S.A.

(-JA)

REV-H C7
Telex Communications, Inc.
FCC ID: B5DH223
IC: 1321A-H221
SN: XXXXXX
MADE IN U.S.A.

(-C7)

REV-H JB
Telex Communications, Inc.
806.125 - 809.750 MHz
SN: XXXXXX
MADE IN U.S.A.

(-JB)

THIS LABEL IS USED FOR REV-H C7

QTY	DESCRIPTION	ITEM	PART NUMBER	SPECIFICATION
	UNSPECIFIED LIMITS OF TOLERANCE	DATE	15-FEB-06	
	DECIMAL: FRACTION:	DR BY	P. EGGERLING	
	.X = ±.030 IN MACHINED	CHK BY	SBE 20-JUL-06	
	.XX = ±.010 IN FINISH 64	APPR'D	JRC 20-JUL-06	
	.XXX = ±.005 IN	PROD		
	ANGLES ± 1°, BENDS ± 2°	MAT'L	L-467	
	STRAIGHTNESS AND/OR		TITLE	
	FLATNESS .005 IN./1 IN.		LABEL, I.D./FCC, REV-H	
	CONCENTRICITY		SIZE	CODE IDENT
	UNMARKED ANGLES, BENDS		C	57010
	AND INTERSECTIONS 90°		DWG. No.	804243
	THREADS - EXT. CLASS 2A		SCALE: NONE	SHEET: 1 OF 1
	INT. CLASS 2B			
NEXT ASSY	USED ON			
APPLICATIONS				