

ID LABEL LOCATION

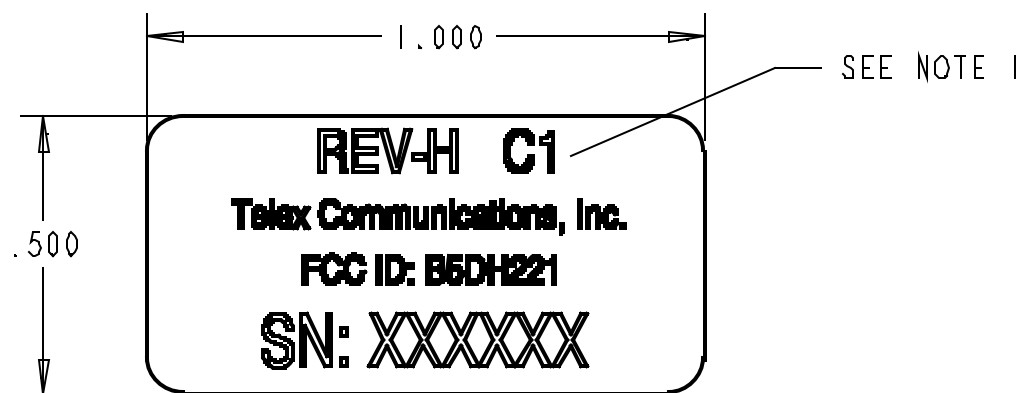
804243-XX

This drawing, written description or specification represents a proprietary product of TELEX, Lincoln, NE., and shall not be released, disclosed nor duplicated without the written permission of TELEX.

REVISIONS				
CHG NO	LTR	DESCRIPTION	DATE	APPD
-----	01	RELEASE FOR BETA RUN	20-DEC-05	---
-----	02	ADDED FCC ID NUMBER	16-FEB-06	---

NOTES:

1. LETTERING IS SUBJECT TO CHANGE DEPENDING ON THE FREQUENCY GROUP (C1, C2, C3, C5, D, AND E).
2. SERIAL NUMBER(SN: XXXXXX) TO START AT 01000.
3. LINCOLN DESIGN ENGINEERING TO APPROVE LABEL LAYOUT.



PART NUMBER	MODEL	FREQUENCY GROUP
804243-C1	REV-H	C1
804243-C2	REV-H	C2
804243-C3	REV-H	C3
804243-C5	REV-H	C5
804243-D	REV-H	D
804243-E	REV-H	E

**REV-H C1**  
Telex Communications, Inc.  
FCC ID: B5DH221  
SN: XXXXXX

(-C1)

**REV-H C5**  
Telex Communications, Inc.  
FCC ID: B5DH221  
SN: XXXXXX

(-C5)

**REV-H C2**  
Telex Communications, Inc.  
FCC ID: B5DH221  
SN: XXXXXX

(-C2)

**REV-H D**  
Telex Communications, Inc.  
FCC ID: B5DH221  
SN: XXXXXX

(-D)

**REV-H C3**  
Telex Communications, Inc.  
FCC ID: B5DH221  
SN: XXXXXX

(-C3)

**REV-H E**  
Telex Communications, Inc.  
FCC ID: B5DH221  
SN: XXXXXX

(-E)

QTY	DESCRIPTION	ITEM	PART NUMBER	SPECIFICATION
	UNSPECIFIED LIMITS OF TOLERANCE	DATE	15-FEB-06	<p align="center"><b>Telex®</b> TELEX COMMUNICATIONS, INC. Lincoln Nebraska U.S.A.</p>
	DECIMAL: FRACTION:	DR BY	P. EGGERLING	
	.X = ±.030 IN	CHK BY		
	.XX = ±.010 IN	APPR'D		
	.XXX = ±.005 IN	PROD		TITLE
	ANGLES ± 1°, BENDS ±2°	MAT'L	L-467	LABEL, I.D./FCC, REV-H
	STRAIGHTNESS AND/OR			SIZE
	FLATNESS .005 IN./1 IN.			C
	CONCENTRICITY			CODE IDENT
	UNMARKED ANGLES, BENDS			DWG. No.
	AND INTERSECTIONS 90°			804243-XX
	THREADS - EXT. CLASS 2A			SCALE: NONE
	INT. CLASS 2B			SHEET: 1 OF 1
NEXT ASSY	USED ON			
APPLICATIONS				