

### Band 5H (560-596 MHz)

RE3 Frequency Band: 5H

560 - 596 MHz

Orients to NTSC TV Channels 29 - 34

PAL TV Channels 32 - 36

| NTSC | TV Channel Orientation |           |    | PAL |
|------|------------------------|-----------|----|-----|
|      | Group 1                |           |    |     |
|      | CH                     | Frequency | CH |     |
| 29   | 1                      | 560.325   | 1  | 32  |
|      | 2                      | 563.200   | 2  |     |
|      | 3                      | 565.450   | 3  |     |
| 30   | 4                      | 566.700   | 4  | 33  |
|      | 5                      | 569.450   | 5  |     |
| 31   | 6                      | 572.450   | 6  | 34  |
|      | 7                      | 576.200   | 7  |     |
| 32   | 8                      | 577.700   | 8  | 35  |
|      | 9                      | 582.325   | 9  |     |
| 33   | 10                     | 584.825   | 10 | 36  |
|      | 11                     | 586.200   | 11 |     |
| 34   | 12                     | 589.325   | 12 | 37  |
|      | 13                     | 592.700   | 13 |     |
|      | 14                     | 593.700   | 14 |     |

| NTSC | TV Channel Orientation |           |    | PAL |
|------|------------------------|-----------|----|-----|
|      | Group 2                |           |    |     |
|      | CH                     | Frequency | CH |     |
| 29   | 1                      | 560.175   | 1  | 32  |
|      | 2                      | 561.375   | 2  |     |
|      | 3                      | 563.525   | 3  |     |
| 30   | 4                      | 566.425   | 4  | 33  |
|      | 5                      | 567.500   | 5  |     |
| 31   | 6                      | 570.000   | 6  | 34  |
|      | 7                      | 575.750   | 7  |     |
| 32   | 8                      | 577.500   | 8  | 35  |
|      | 9                      | 581.750   | 9  |     |
| 33   | 10                     | 586.500   | 10 | 36  |
|      | 11                     | 589.525   | 11 |     |
| 34   | 12                     | 590.950   | 12 | 37  |
|      | 13                     | 593.225   | 13 |     |
|      | 14                     | 594.125   | 14 |     |

| NTSC | TV Channel Orientation |           |    | PAL |
|------|------------------------|-----------|----|-----|
|      | Group 3                |           |    |     |
|      | CH                     | Frequency | CH |     |
| 29   | 1                      | 561.625   | 1  | 32  |
|      | 2                      | 562.800   | 2  |     |
|      | 3                      | 564.575   | 3  |     |
| 30   | 4                      | 568.600   | 4  | 33  |
|      | 5                      | 570.775   | 5  |     |
| 31   | 6                      | 575.275   | 6  | 34  |
|      | 7                      | 579.125   | 7  |     |
| 32   | 8                      | 580.675   | 8  | 35  |
|      | 9                      | 583.425   | 9  |     |
| 33   | 10                     | 588.525   | 10 | 36  |
|      | 11                     | 590.900   | 11 |     |
| 34   | 12                     | 591.900   | 12 | 37  |
|      | 13                     | 594.475   | 13 |     |
|      | 14                     | 595.075   | 14 |     |

| NTSC | TV Channel Orientation |           |    | PAL |
|------|------------------------|-----------|----|-----|
|      | Group 4                |           |    |     |
|      | CH                     | Frequency | CH |     |
| 29   | 1                      | 560.800   | 1  | 32  |
|      | 2                      | 561.650   | 2  |     |
|      | 3                      | 564.125   | 3  |     |
| 30   | 4                      | 566.225   | 4  | 33  |
|      | 5                      | 570.075   | 5  |     |
| 31   | 6                      | 574.775   | 6  | 34  |
|      | 7                      | 577.400   | 7  |     |
| 32   | 8                      | 579.100   | 8  | 35  |
|      | 9                      | 583.075   | 9  |     |
| 33   | 10                     | 584.375   | 10 | 36  |
|      | 11                     | 589.325   | 11 |     |
| 34   | 12                     | 592.500   | 12 | 37  |
|      | 13                     | 593.525   | 13 |     |
|      | 14                     | 595.400   | 14 |     |

| NTSC | TV Channel Orientation |           |    | PAL |
|------|------------------------|-----------|----|-----|
|      | Group 5                |           |    |     |
|      | CH                     | Frequency | CH |     |
| 29   | 1                      | 560.600   | 1  | 32  |
|      | 2                      | 562.475   | 2  |     |
|      | 3                      | 563.850   | 3  |     |
|      | 4                      | 565.850   | 4  |     |
| 30   | 5                      | 567.600   | 5  | 33  |
|      | 6                      | 570.725   | 6  |     |
| 31   | 7                      | 571.750   | 7  | 34  |
|      | 8                      | 574.225   | 8  |     |
| 32   | 9                      | 576.100   | 9  | 35  |
|      | 10                     | 577.100   | 10 |     |
| 33   | 11                     | 578.475   | 11 | 36  |
|      | 12                     | 581.725   | 12 |     |
| 34   | 13                     | 584.225   | 13 | 37  |
|      | 14                     | 585.650   | 14 |     |
| 35   | 15                     | 588.100   | 15 | 38  |
|      | 16                     | 588.975   | 16 |     |
| 36   | 17                     | 590.150   | 17 | 39  |
|      | 18                     | 590.850   | 18 |     |
| 37   | 19                     | 593.350   | 19 | 40  |
|      | 20                     | 594.850   | 20 |     |
|      | 21                     | 595.475   | 21 |     |

| NTSC | TV Channel Orientation |           |    | PAL |
|------|------------------------|-----------|----|-----|
|      | Group 6                |           |    |     |
|      | CH                     | Frequency | CH |     |
| 29   | 1                      | 560.525   | 1  | 32  |
|      | 2                      | 561.525   | 2  |     |
|      | 3                      | 563.400   | 3  |     |
|      | 4                      | 564.775   | 4  |     |
| 30   | 5                      | 567.775   | 5  | 33  |
|      | 6                      | 570.400   | 6  |     |
| 31   | 7                      | 571.975   | 7  | 34  |
|      | 8                      | 572.650   | 8  |     |
| 32   | 9                      | 574.400   | 9  | 35  |
|      | 10                     | 575.800   | 10 |     |
| 33   | 11                     | 578.025   | 11 | 36  |
|      | 12                     | 578.775   | 12 |     |
| 34   | 13                     | 582.650   | 13 | 37  |
|      | 14                     | 584.525   | 14 |     |
| 35   | 15                     | 586.150   | 15 | 38  |
|      | 16                     | 588.650   | 16 |     |
| 36   | 17                     | 590.525   | 17 | 39  |
|      | 18                     | 590.525   | 18 |     |
| 37   | 19                     | 593.025   | 19 | 40  |
|      | 20                     | 593.900   | 20 |     |
| 38   | 21                     | 595.150   | 21 | 41  |
|      | 22                     | 595.850   | 22 |     |

| NTSC | TV Channel Orientation |           |    | PAL |
|------|------------------------|-----------|----|-----|
|      | Group 7                |           |    |     |
|      | CH                     | Frequency | CH |     |
| 29   | 1                      | 560.825   | 1  | 32  |
|      | 2                      | 561.575   | 2  |     |
|      | 3                      | 563.325   | 3  |     |
|      | 4                      | 563.950   | 4  |     |
|      | 5                      | 564.825   | 5  |     |
| 30   | 6                      | 566.025   | 6  | 33  |
|      | 7                      | 567.700   | 7  |     |
|      | 8                      | 570.825   | 8  |     |
| 31   | 9                      | 572.950   | 9  | 34  |
|      | 10                     | 574.325   | 10 |     |
| 32   | 11                     | 575.950   | 11 | 35  |
|      | 12                     | 579.325   | 12 |     |
| 33   | 13                     | 580.575   | 13 | 36  |
|      | 14                     | 583.275   | 14 |     |
| 34   | 15                     | 586.325   | 15 | 37  |
|      | 16                     | 588.375   | 16 |     |
| 35   | 17                     | 589.950   | 17 | 38  |
|      | 18                     | 591.825   | 18 |     |
| 36   | 19                     | 592.825   | 19 | 39  |
|      | 20                     | 594.200   | 20 |     |
| 37   | 21                     | 594.950   | 21 | 40  |
|      | 22                     | 595.950   | 22 |     |

| NTSC | TV Channel Orientation |           |    | PAL |
|------|------------------------|-----------|----|-----|
|      | Group 8                |           |    |     |
|      | CH                     | Frequency | CH |     |
| 29   | 1                      | 561.300   | 1  | 32  |
|      | 2                      | 562.425   | 2  |     |
|      | 3                      | 563.925   | 3  |     |
|      | 4                      | 564.925   | 4  |     |
| 30   | 5                      | 567.175   | 5  | 33  |
|      | 6                      | 569.800   | 6  |     |
| 31   | 7                      | 571.050   | 7  | 34  |
|      | 8                      | 573.800   | 8  |     |
| 32   | 9                      | 574.425   | 9  | 35  |
|      | 10                     | 576.800   | 10 |     |
| 33   | 11                     | 581.300   | 11 | 36  |
|      | 12                     | 582.175   | 12 |     |
| 34   | 13                     | 584.300   | 13 | 37  |
|      | 14                     | 586.675   | 14 |     |
| 35   | 15                     | 587.800   | 15 | 38  |
|      | 16                     | 589.300   | 16 |     |
| 36   | 17                     | 593.050   | 17 | 39  |
|      | 18                     | 593.800   | 18 |     |
| 37   | 19                     | 595.175   | 19 | 40  |
|      | 20                     | 595.925   | 20 |     |

**Band 6M (653-663 MHz)**

**RE3 Frequency Band: 6M 653 - 663 MHz**

Operates within the \*North American Duplex Gap  
 \* Portions of this gap require user license as noted

| Required | License Requirement |                   |
|----------|---------------------|-------------------|
|          | CH                  | Group 1 Frequency |
| Y        | 1                   | 653.150           |
| Y        | 2                   | 654.150           |
| Y        | 3                   | 655.600           |
| Y        | 4                   | 656.050           |
| Y        | 5                   | 656.750           |
| N        | 6                   | 658.325           |
| N        | 7                   | 660.100           |
| N        | 8                   | 661.375           |
| N        | 9                   | 662.250           |

| Required | License Requirement |                   |
|----------|---------------------|-------------------|
|          | CH                  | Group 2 Frequency |
| Y        | 1                   | 653.800           |
| Y        | 2                   | 654.900           |
| Y        | 3                   | 655.525           |
| Y        | 4                   | 656.500           |
| N        | 5                   | 657.775           |
| N        | 6                   | 658.550           |
| N        | 7                   | 660.975           |
| N        | 8                   | 662.400           |
| N        | 9                   | 662.850           |

| Required | License Requirement |                   |
|----------|---------------------|-------------------|
|          | CH                  | Group 3 Frequency |
| Y        | 1                   | 653.125           |
| Y        | 2                   | 653.575           |
| Y        | 3                   | 655.675           |
| N        | 4                   | 657.000           |
| N        | 5                   | 657.950           |
| N        | 6                   | 659.400           |
| N        | 7                   | 661.050           |
| N        | 8                   | 662.150           |
| N        | 9                   | 662.950           |

| Required | License Requirement |                   |
|----------|---------------------|-------------------|
|          | CH                  | Group 4 Frequency |
| Y        | 1                   | 653.675           |
| Y        | 2                   | 654.500           |
| Y        | 3                   | 655.825           |
| Y        | 4                   | 656.950           |
| N        | 5                   | 657.650           |
| N        | 6                   | 659.975           |
| N        | 7                   | 660.425           |
| N        | 8                   | 661.425           |
| N        | 9                   | 662.000           |

| Required | License Requirement |                   |
|----------|---------------------|-------------------|
|          | CH                  | Group 5 Frequency |
| Y        | 1                   | 653.225           |
| Y        | 2                   | 653.650           |
| Y        | 3                   | 654.650           |
| Y        | 4                   | 655.050           |
| Y        | 5                   | 656.275           |
| N        | 6                   | 657.325           |
| N        | 7                   | 659.100           |
| N        | 8                   | 660.275           |
| N        | 9                   | 660.675           |
| N        | 10                  | 661.250           |
| N        | 11                  | 661.650           |
| N        | 12                  | 662.800           |

| Required | License Requirement |                   |
|----------|---------------------|-------------------|
|          | CH                  | Group 6 Frequency |
| Y        | 1                   | 653.050           |
| Y        | 2                   | 653.525           |
| Y        | 3                   | 654.300           |
| Y        | 4                   | 655.325           |
| Y        | 5                   | 656.000           |
| Y        | 6                   | 656.900           |
| N        | 7                   | 658.000           |
| N        | 8                   | 659.275           |
| N        | 9                   | 659.750           |
| N        | 10                  | 661.125           |
| N        | 11                  | 662.275           |
| N        | 12                  | 662.775           |

| Required | License Requirement |                   |
|----------|---------------------|-------------------|
|          | CH                  | Group 7 Frequency |
| Y        | 1                   | 653.500           |
| Y        | 2                   | 654.250           |
| Y        | 3                   | 655.175           |
| Y        | 4                   | 655.900           |
| N        | 5                   | 657.200           |
| N        | 6                   | 657.725           |
| N        | 7                   | 658.950           |
| N        | 8                   | 659.900           |
| N        | 9                   | 660.525           |
| N        | 10                  | 661.550           |
| N        | 11                  | 662.325           |
| N        | 12                  | 662.925           |

| Required | License Requirement |                   |
|----------|---------------------|-------------------|
|          | CH                  | Group 8 Frequency |
| Y        | 1                   | 653.250           |
| Y        | 2                   | 653.850           |
| Y        | 3                   | 654.750           |
| Y        | 4                   | 655.150           |
| Y        | 5                   | 655.850           |
| N        | 6                   | 657.450           |
| N        | 7                   | 658.675           |
| N        | 8                   | 659.475           |
| N        | 9                   | 660.800           |
| N        | 10                  | 661.225           |
| N        | 11                  | 661.925           |
| N        | 12                  | 662.425           |

### Band T (803-806 MHz)

RE3 Frequency Band: T 803 - 806 MHz Orients to PAL TV Channel 62 No NTSC Orientation

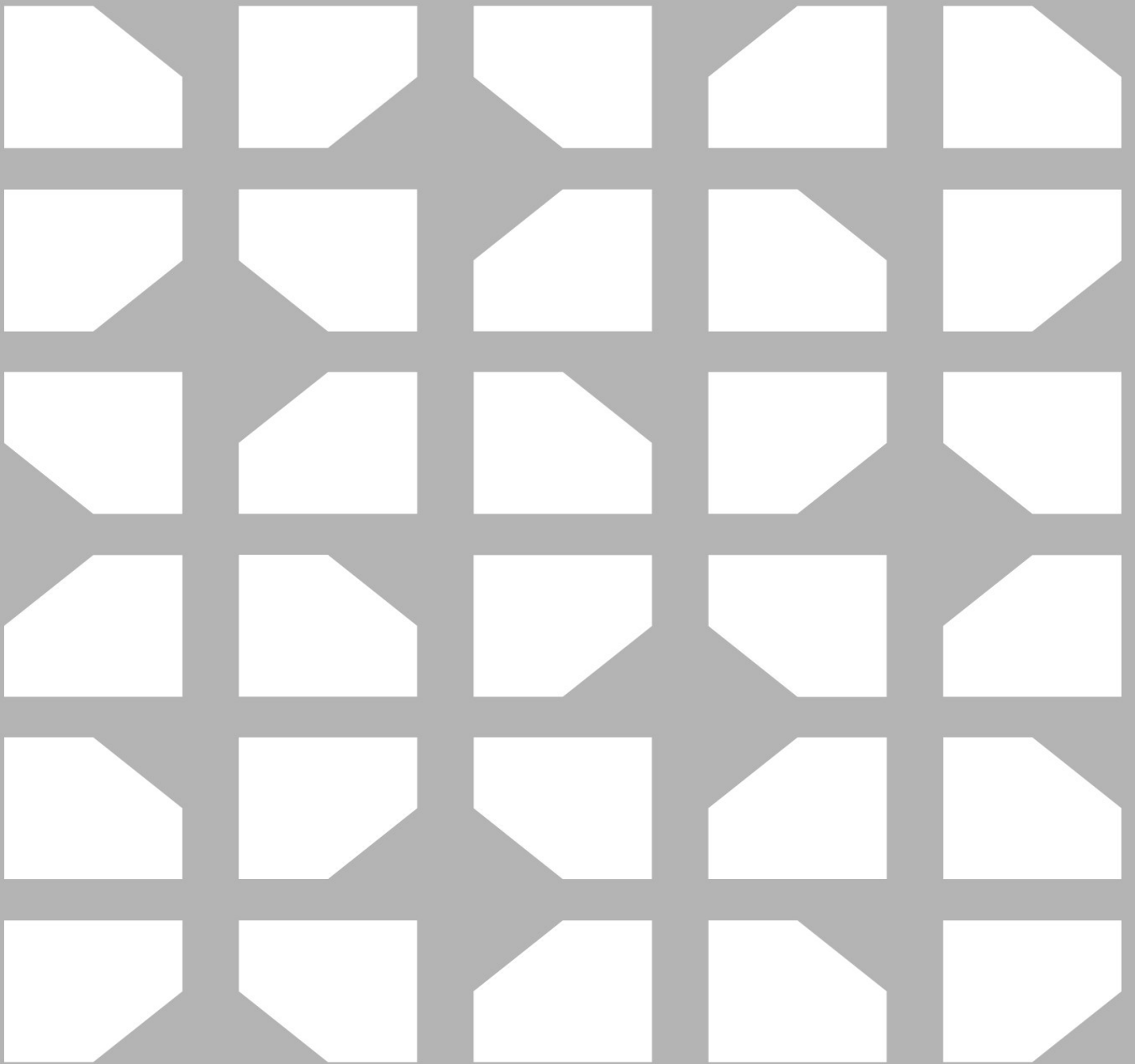
| NTSC | TV Channel Orientation |           |    | PAL |
|------|------------------------|-----------|----|-----|
|      | CH                     | Frequency | CH |     |
|      | <b>Group 1</b>         |           |    |     |
|      | 1                      | 803.100   | 1  | 62  |
|      | 2                      | 803.675   | 2  |     |
|      | 3                      | 804.600   | 3  |     |
|      | 4                      | 805.300   | 4  |     |
|      | 5                      | 805.750   | 5  |     |
|      | <b>Group 2</b>         |           |    |     |
|      | 1                      | 803.300   | 1  | 62  |
|      | 2                      | 803.825   | 2  |     |
|      | 3                      | 804.725   | 3  |     |
|      | 4                      | 805.125   | 4  |     |
|      | 5                      | 805.825   | 5  |     |
|      | <b>Group 3</b>         |           |    |     |
|      | 1                      | 803.325   | 1  | 62  |
|      | 2                      | 803.725   | 2  |     |
|      | 3                      | 804.375   | 3  |     |
|      | 4                      | 805.250   | 4  |     |
|      | 5                      | 805.775   | 5  |     |
|      | <b>Group 4</b>         |           |    |     |
|      | 1                      | 803.275   | 1  | 62  |
|      | 2                      | 803.850   | 2  |     |
|      | 3                      | 804.775   | 3  |     |
|      | 4                      | 805.475   | 4  |     |
|      | 5                      | 805.925   | 5  |     |
|      | <b>Group 5</b>         |           |    |     |
|      | 1                      | 803.050   | 1  | 62  |
|      | 2                      | 803.425   | 2  |     |
|      | 3                      | 804.000   | 3  |     |
|      | 4                      | 804.750   | 4  |     |
|      | 5                      | 805.325   | 5  |     |
|      | 6                      | 805.675   | 6  |     |
|      | <b>Group 6</b>         |           |    |     |
|      | 1                      | 803.125   | 1  | 62  |
|      | 2                      | 803.600   | 2  |     |
|      | 3                      | 804.650   | 3  |     |
|      | 4                      | 805.000   | 4  |     |
|      | 5                      | 805.525   | 5  |     |
|      | 6                      | 805.875   | 6  |     |
|      | <b>Group 7</b>         |           |    |     |
|      | 1                      | 803.200   | 1  | 62  |
|      | 2                      | 803.575   | 2  |     |
|      | 3                      | 804.175   | 3  |     |
|      | 4                      | 804.950   | 4  |     |
|      | 5                      | 805.550   | 5  |     |
|      | 6                      | 805.900   | 6  |     |
|      | <b>Group 8</b>         |           |    |     |
|      | 1                      | 803.150   | 1  | 62  |
|      | 2                      | 803.550   | 2  |     |
|      | 3                      | 804.125   | 3  |     |
|      | 4                      | 804.900   | 4  |     |
|      | 5                      | 805.500   | 5  |     |
|      | 6                      | 805.850   | 6  |     |

### Band 8M (823-865 MHz)

RE3 Frequency Band: 8m 823 - 865 MHz Orients to PAL TV Channel 65 - 70 No NTSC Orientation

| NTSC | TV Channel Orientation |           |    | PAL |
|------|------------------------|-----------|----|-----|
|      | CH                     | Frequency | CH |     |
|      | <b>Group 1</b>         |           |    |     |
|      | 1                      | 823.150   | 1  | 65  |
|      | 2                      | 824.200   | 2  |     |
|      | 3                      | 825.675   | 3  |     |
|      | 4                      | 826.600   | 4  |     |
|      | 5                      | 827.950   | 5  |     |
|      | 6                      | 829.625   | 6  |     |
|      | 7                      | 830.825   | 7  |     |
|      | 8                      | 831.525   | 8  |     |
|      | <b>Group 2</b>         |           |    |     |
|      | 1                      | 863.100   | 1  | 70  |
|      | 2                      | 863.475   | 2  |     |
|      | 3                      | 864.025   | 3  |     |
|      | 4                      | 864.750   | 4  |     |
|      | <b>Group 3</b>         |           |    |     |
|      | 1                      | 823.475   | 1  | 65  |
|      | 2                      | 824.600   | 2  |     |
|      | 3                      | 826.500   | 3  |     |
|      | 4                      | 827.900   | 4  |     |
|      | 5                      | 829.950   | 5  |     |
|      | 6                      | 831.725   | 6  |     |
|      | 7                      | 863.150   | 7  |     |
|      | 8                      | 863.875   | 8  |     |
|      | 9                      | 864.425   | 9  |     |
|      | 10                     | 864.800   | 10 |     |
|      | <b>Group 4</b>         |           |    |     |
|      | 1                      | 823.175   | 1  | 65  |
|      | 2                      | 824.275   | 2  |     |
|      | 3                      | 826.050   | 3  |     |
|      | 4                      | 827.575   | 4  |     |
|      | 5                      | 829.875   | 5  |     |
|      | 6                      | 831.275   | 6  |     |
|      | 7                      | 863.125   | 7  |     |
|      | 8                      | 863.500   | 8  |     |
|      | 9                      | 864.050   | 9  |     |
|      | 10                     | 864.775   | 10 |     |
|      | <b>Group 5</b>         |           |    |     |
|      | 1                      | 823.300   | 1  | 65  |
|      | 2                      | 824.800   | 2  |     |
|      | 3                      | 827.000   | 3  |     |
|      | 4                      | 828.775   | 4  |     |
|      | 5                      | 829.925   | 5  |     |
|      | 6                      | 831.900   | 6  |     |
|      | 7                      | 863.175   | 7  |     |
|      | 8                      | 863.900   | 8  |     |
|      | 9                      | 864.450   | 9  |     |
|      | 10                     | 864.825   | 10 |     |
|      | <b>Group 6</b>         |           |    |     |
|      | 1                      | 823.350   | 1  | 65  |
|      | 2                      | 823.825   | 2  |     |
|      | 3                      | 824.550   | 3  |     |
|      | 4                      | 824.975   | 4  |     |
|      | 5                      | 826.325   | 5  |     |
|      | 6                      | 827.150   | 6  |     |
|      | 7                      | 828.550   | 7  |     |
|      | 8                      | 829.500   | 8  |     |
|      | 9                      | 830.275   | 9  |     |
|      | 10                     | 831.225   | 10 |     |
|      | 11                     | 831.625   | 11 |     |
|      | 12                     | 863.200   | 12 |     |
|      | 13                     | 863.575   | 13 |     |
|      | 14                     | 864.125   | 14 |     |
|      | 15                     | 864.850   | 15 |     |
|      | <b>Group 7</b>         |           |    |     |
|      | 1                      | 823.975   | 1  | 65  |
|      | 2                      | 824.475   | 2  |     |
|      | 3                      | 825.375   | 3  |     |
|      | 4                      | 826.025   | 4  |     |
|      | 5                      | 826.975   | 5  |     |
|      | 6                      | 828.275   | 6  |     |
|      | 7                      | 829.000   | 7  |     |
|      | 8                      | 830.300   | 8  |     |
|      | 9                      | 830.750   | 9  |     |
|      | 10                     | 831.375   | 10 |     |
|      | 11                     | 831.775   | 11 |     |
|      | 12                     | 863.225   | 12 |     |
|      | 13                     | 863.700   | 13 |     |
|      | 14                     | 864.525   | 14 |     |
|      | 15                     | 864.875   | 15 |     |
|      | <b>Group 8</b>         |           |    |     |
|      | 1                      | 823.425   | 1  | 65  |
|      | 2                      | 824.400   | 2  |     |
|      | 3                      | 825.200   | 3  |     |
|      | 4                      | 825.775   | 4  |     |
|      | 5                      | 826.525   | 5  |     |
|      | 6                      | 827.675   | 6  |     |
|      | 7                      | 828.350   | 7  |     |
|      | 8                      | 829.400   | 8  |     |
|      | 9                      | 829.850   | 9  |     |
|      | 10                     | 830.650   | 10 |     |
|      | 11                     | 831.675   | 11 |     |
|      | 12                     | 863.250   | 12 |     |
|      | 13                     | 863.600   | 13 |     |
|      | 14                     | 864.400   | 14 |     |
|      | 15                     | 864.900   | 15 |     |





**Bosch Sicherheitssysteme GmbH**

Robert-Bosch-Ring 5  
85630 Grasbrunn  
Germany

[www.boschsecurity.com](http://www.boschsecurity.com)

© Bosch Sicherheitssysteme GmbH, 2018

**Bosch Security Systems, Inc**

12000 Portland Avenue South  
Burnsville MN 55337  
USA

[www.electrovoice.com](http://www.electrovoice.com)