

GE Security, Inc.

GE Security, Inc.
319.5MHz AM 4-BUTTON DESIGNER FOB
B4Z-869-FOB
Certification

GE Security, Inc.

**319.5MHz AM 4-BUTTON DESIGNER FOB
B4Z-869-FOB**

12/17/2004

**GE Security, Inc.
1275 Red Fox Road
Arden Hills, MN 55112
(651) 777-2690**

GE Security, Inc.

1. INTRODUCTION	4
2. STATEMENT OF COMPLIANCE	4
3. LAB MEASUREMENTS DISCUSSION / TEST NOTES	7
3.1 Test Notes	7
3.1.1 Transmissions shall cease within 5 seconds of activation [§15.231(a)(2)]	7
3.1.2 Supervisory Calculation [§15.231(a)(3)]	9
3.1.3 Duty Cycle Correction Factor [§15.231(b)(2) and §15.35(c)]	9
3.1.4 Bandwidth Measurement [§15.231(c)]	12
3.1.5 Emissions Measurements	16
3.1.5.1 Radiated Emissions Summary	16
3.1.5.2 FCC Emissions Calculation	16
3.1.5.2.1 Terms	16
3.1.5.2.2 Example Calculation	17
3.1.5.3 Radiated Emissions	17
3.1.5.4 Forbidden Bands	18

1. Introduction

This device detects button presses and sends corresponding keycodes to a receiver. The transmitter is powered by a single 3V lithium coin cell. Transmitter frequency is controlled by a SAW device and is not adjustable by the user. The device measures approximately 1.4 x 2.7 x 0.5 inches and weighs approximately 0.7 ounces.

We are requesting certification under FCC Rules, Part 15, Subpart C, Paragraph 15.231.

Please send comments or suggestions on the report format to john.bergman@ge.com.

Grantee Code: B4Z

2. Statement of Compliance

§2.907 Certification

This is an application for certification

§2.911 Application

- a) This is an application and has been filed electronically with form 731.
- b) All information required has been supplied.
- c) The applicant has signed the application electronically.
- d) The technical data has been signed.
See **TUV Radiated Emissions** Microsoft Word files:
5471-1RE 56-869-95R.doc
5471-4RE group unintentional emission scan.doc
("56-869-95R" and "B4Z-869-FOB" refer to the same hardware.)
- e) Applicant signature block on electronic form 731 completed by officer of the company or authorized company personnel.
- f) The appropriate fees were paid online with VISA on 01/04/05.
Pay.gov Tracking ID: 24TEE8EM
Agency Tracking ID: 638785

§2.915 Grant

This application demonstrates that all applicable technical standards have been met and a grant of this application will serve the public interest.

§2.925 Label

Each piece of equipment for which authorization will be granted will be uniquely identified with "FCC ID: **B4Z-869-FOB**." The required statement will appear in the installation instructions and on the back of each transmitter. See exhibit A, Microsoft Word file: id_label.doc.

§2.947 Measurement Procedure

- a) The measurement procedure follows ANSI C63.4.
Procedural notes are contained in the laboratory report.

- d) A list of test equipment used is contained in the laboratory report.

§2.948 Description of Measurement Facilities

Measurements were performed at TUV Testing Services Open Test Site. The FCC keeps a full description of the measurement facilities on file. TUV's acceptance and approval is dated as December 5, 1993 in a letter received from the FCC.

The address of the test facility is:
TUV Product Service
19035 Wild Mountain Road
Taylors Falls, MN 55084-1758

Phone: 651-638-0297
Contact: Joel Schneider
Test Engineer in Charge

See Exhibit F, Microsoft Word file: *test_setup.doc*, for sketch of measurement setup.

§2.1033 Application for Certification

- a) Form 731 has been electronically filed on 01/04/05. Items that did not apply were left blank.
- b) This technical report contains the following information where applicable.
 - 1) Full name and mailing address of manufacturer and applicant for certification:
GE Security, Inc.
1275 Red Fox Road
Arden Hills, MN 55112
 - 2) FCC Identifier:
B4Z-869-FOB
 - 3) Copy of installation instructions:

GE Security, Inc.

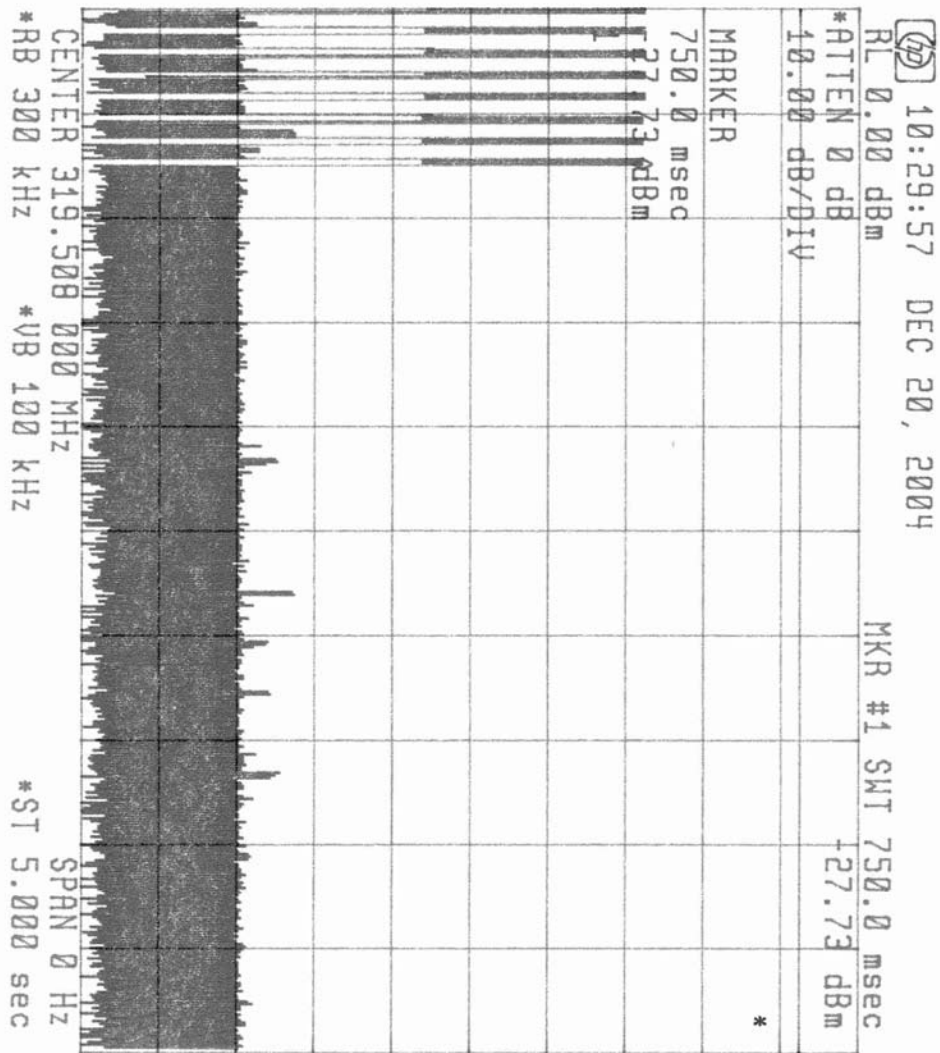
- See Exhibit G, PDF file: *user_manual.pdf*
- 4) Brief Description of circuit functions and device operation:
See Exhibit I, Microsoft Word file
operational_description.doc
See Exhibit D, Microsoft Word file *schematics.doc*
for schematics and parts placement diagrams.
- 5) Block Diagram:
See Exhibit C, Microsoft Word file
block_diagram.doc.
- 6) Report of the measurements of radiation and conducted emissions:
This document.
- 7) Photographs:
External:
See Exhibit B, Microsoft Word file
external_photos.doc
Internal:
See Exhibit H, Microsoft Word file
internal_photos.doc
- 8) Peripheral or Accessory devices:
This is not applicable to device in this application.
- 9) Transition Rules:
This application is not pursuant to the transition rules of §15.37
- 10) Emergency Broadcast decoding:
This is not applicable to device in this application.
- 11) Application for direct sequence spread spectrum devices:
This is not applicable to device in this application.
- 12) Application for scanning receivers:
This is not applicable to device in this application.
- c) Composite Systems
This is not applicable to device in this application.

3. Lab Measurements Discussion / Test Notes

3.1 Test Notes

3.1.1 Transmissions shall cease within 5 seconds of activation [**§15.231(a)(2)**]

Alarm transmissions consist of 8 packets. The packet duration is, at most, 30 mS, see **Duty Cycle Correction Factor** [§15.231(b)(2) and §15.35(c)]. Packets are sent every 100 milliseconds. The following plot shows an 8-packet transmission that concludes in less than 5 seconds.



3.1.2 Supervisory Calculation [**§15.231(a)(3)**]

This transmitter does not send supervisory packets.

3.1.3 Duty Cycle Correction Factor [**§15.231(b)(2)** and **§15.35(c)**]

The transmitter employs amplitude modulation and transmits 80 bits. Each bit has an “ON” time of 122 μ S. Total “ON” time is therefore

$$80 * 122 \mu\text{S} = 9.76 \text{ mS.}$$

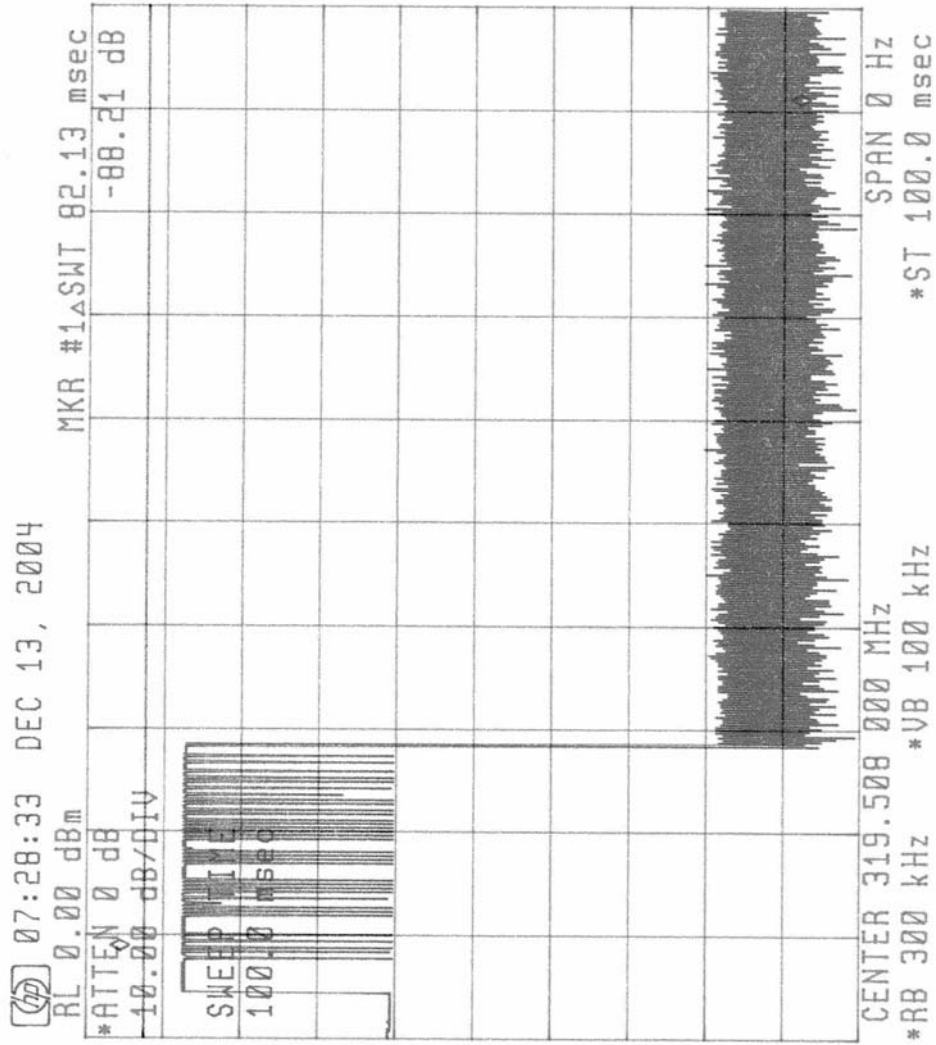
Only one packet is sent in any given 100 mS window for a duty cycle correction factor of

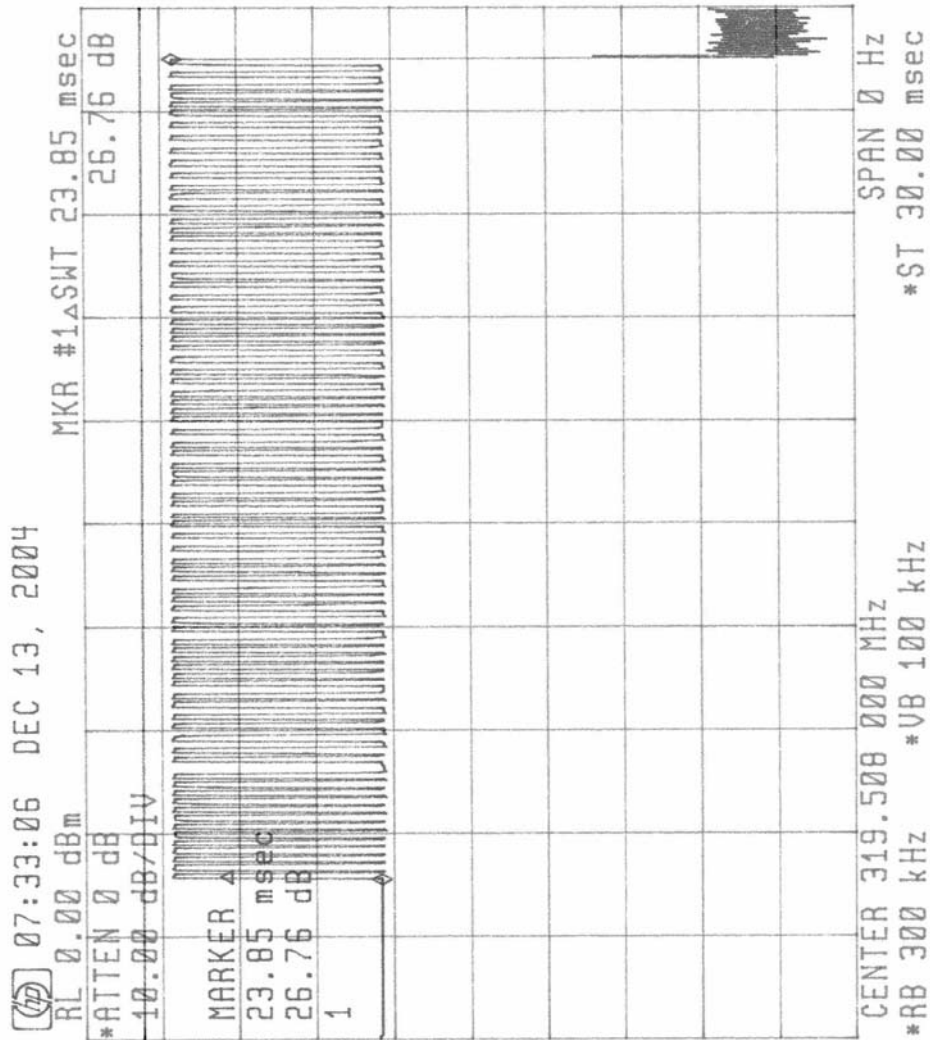
$$20 * \text{LOG}(9.76/100) = -20.21 \text{ dB.}$$

The maximum allowed correction factor is -20.0 dB.

The following plots show:

1. Single packet in 100 mS window.
2. Expanded view of a packet with a duration of 30 mS





GE Security, Inc.

3.1.4 Bandwidth Measurement [§15.231(c)]

Bandwidth Measurements were made in peak mode, using a Hewlett Packard Spectrum Analyzer, model number 70000.

The spectrum analyzer 20 dB skirt bandwidth is 1.8 KHz.

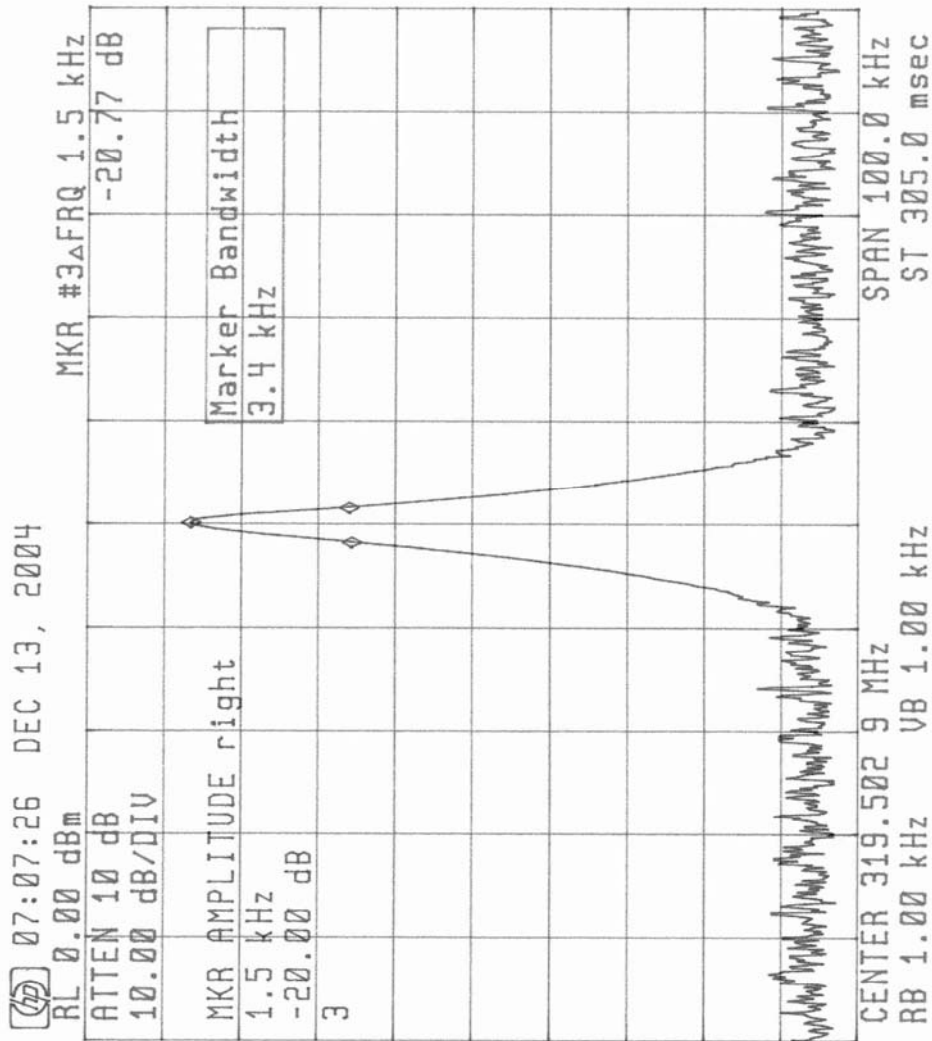
The allowed 20 dB bandwidth is 0.25% of center frequency.

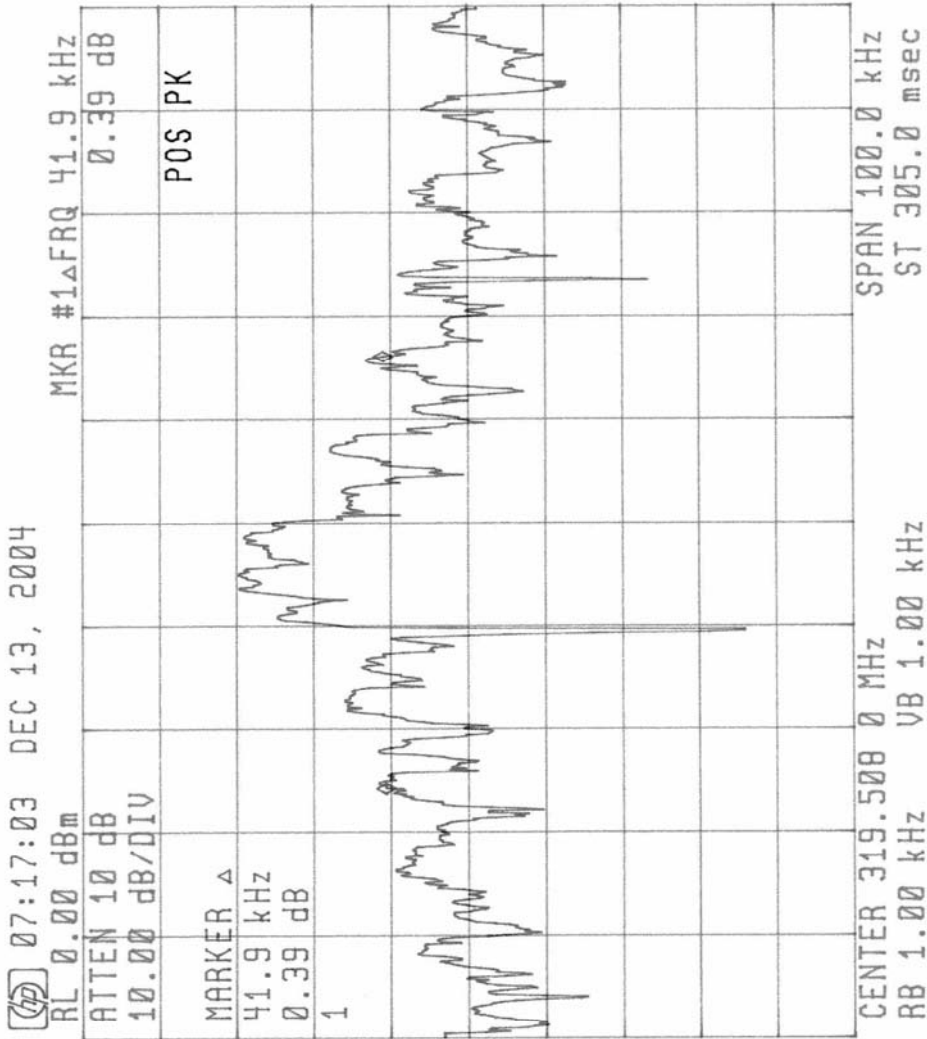
Estimated signal bandwidth = Measured signal bandwidth - analyzer bandwidth.

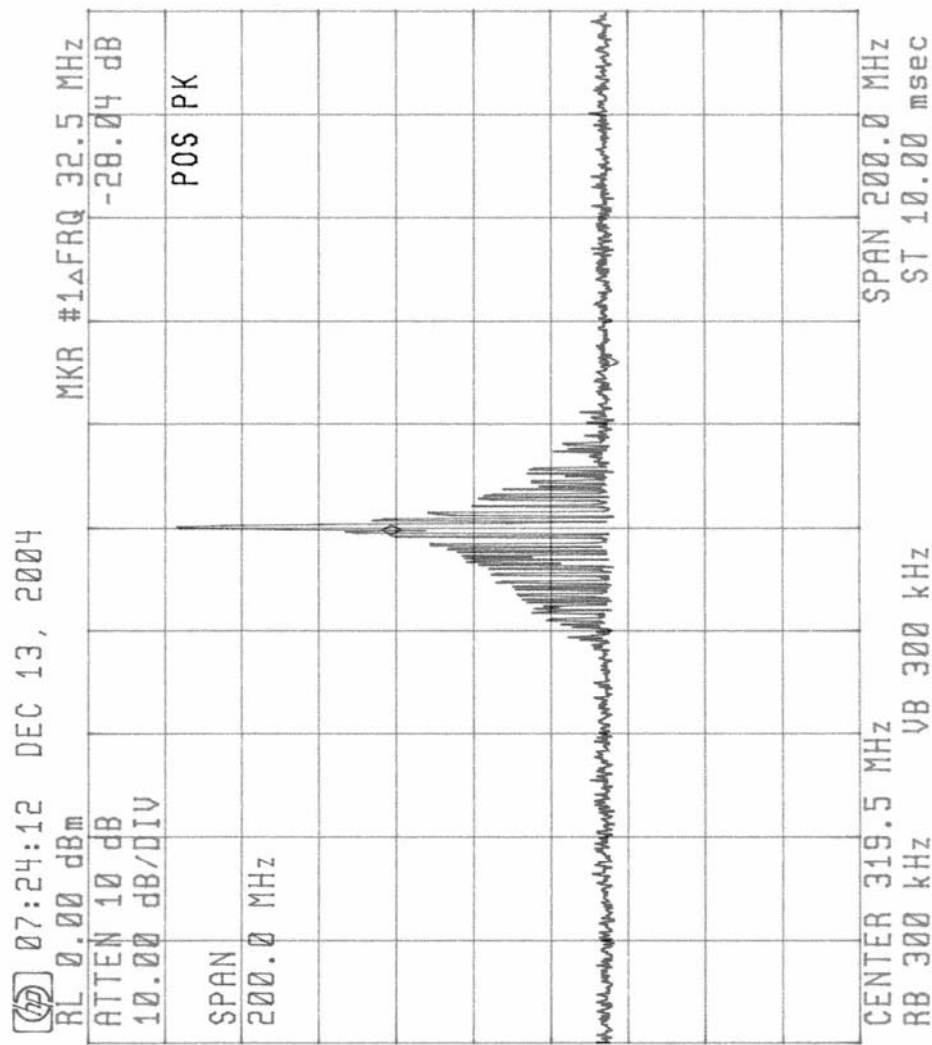
Center Frequency MHz	Measured 20 dB Bandwidth in KHz	Estimated 20 dB signal Bandwidth in KHz	FCC allowed 20 dB Bandwidth in KHz
319.508	41.9	40.1	799

The following three plots show:

1. Bandwidth of carrier without modulation
2. Bandwidth of signal with modulation, 200 KHz span
3. Bandwidth of signal with modulation, 200 MHz span







GE Security, Inc.

3.1.5 Emissions Measurements

3.1.5.1 Radiated Emissions Summary

The **319.5MHz AM 4-BUTTON DESIGNER FOB** passes FCC Rules Part 15, Subpart C, Paragraph 15.231. The highest fundamental radiated emission was 12.6 dB below the FCC limit at 319.5 MHz. The highest spurious radiated emission was 18.4 dB below the FCC limit at 639 MHz. The highest restricted band radiated emission was 18.86 dB below the FCC limit at 2875.5 MHz.

3.1.5.2 FCC Emissions Calculation

3.1.5.2.1 Terms

Term	Abbreviation	Units	Description
Analyzer Reading	AR	dB μ V	The power reading read directly from the analyzer without any correction for cabling or receive antenna.
Duty Cycle Correction	DC	dB	Correction for averaging measurement, see Duty Cycle Correction Factor [§15.231(b)(2) and §15.35(c)]
Antenna Factor	AF	dB	Calibration factor for measurement antenna which converts from dB μ V measured with antenna to the field strength received by the antenna in dB μ V/M.
Cable Loss	CL	dB	Amount of power lost in cable (and connectors, if any) between antenna and analyzer
Pre-Amp	PA	dB	Gain in pre-amp

GE Security, Inc.

3.1.5.2.2 Example Calculation

AR = 99.3 dB μ V

AF = 13.9 dB

CL = 3.8 dB

DC = 20 dB

PA=26.2 dB

The field strength for comparison to FCC limits is found to be:

$$AR + AF + CL - DC - PA = 99.3 + 13.9 + 3.8 - 20 - 26.2 = 70.8 \text{ dB}\mu\text{V/M}$$

Alternatively, the AR + AF + CL - PA is compared to the FCC limit + DC. This number is often written to the right of measurement data on the test results. For example, the FCC limit for ITI transmitters at 319.5 MHz is approximately 95.9 dB μ V/M. The limit from §15.231(b) with linear interpolation yields a limit, without consideration for duty cycle, of approximately 75.9 dB μ V/M.

To convert to μ V/M the following equation is used:

$$\mu\text{V/M} = \text{INVLOG}(\text{dB}\mu\text{V/M} / 20)$$

For the above example, 70.8 dB μ V/M is 3,467.369 μ V/M

3.1.5.3 Radiated Emissions

The highest fundamental emission along with the three highest spurious and restricted band emissions are listed below as per ANSI C63.4 paragraph 10.1.8.2. Emissions from 0.009 MHz to the tenth harmonic were measured as per FCC Rules Part 15, Subpart C, Paragraph 15.33(a). Emission limits were derived from §15.231(b).

Frequency	Analyzer Reading	Duty Cycle Correction	Cable Loss	Antenna Factor	Pre-Amp	Field Strength	Field Strength	FCC Limit
MHz	dB μ V	dB	dB	dB	dB	dB μ V/M	μ V/M	μ V/M
319.5	83.29	20	1.5	13.76	26.67	51.88	393	6,229
639	69.1	20	2.1	19.39	27.05	43.54	150	1,250
2236.5	66.65	20	4.11	28.34	44.04	35.06	57	500
2556	73.5	20	4.4	28.84	44.5	42.24	129	1,250
1597.5	42.05	20	3.52	26.11	26.5	25.18	18	500
2875.5	65.7	20	4.63	29.71	44.92	35.12	57	500

GE Security, Inc.

3.1.5.4 *Forbidden Bands*

Noise floor of spectrum analyzer with antenna factors and duty cycle correction converted to $\mu\text{V}/\text{M}$ at approximately one meter.

All measurements were taken with an HP 8566B Spectrum Analyzer. The bandwidth was 100 KHz for measurements below 1000 MHz. The bandwidth was 1 MHz for measurements above 1000 MHz. The video filter was off. The noise floor measurements are summarized in the table below. See also the test data included in this report.

GE Security, Inc.

Frequency Range									
Low Limit	High Limit	Noise Floor Reading	Duty Cycle Corr	Field Strength	Field Strength	FCC Limit @ 3M	FCC Limit @ 1M		
MHz	MHz	dBuV/m	dB	dBuV/M	uV/M	uV/M	uV/M		
0.09000	0.11000	N/A	20	N/A	N/A	2400/F			
0.49500	0.50500	N/A	20	N/A	N/A	2400/F			
2.13750	2.19050	N/A	20	N/A	N/A	30	90		
4.12500	4.12800	N/A	20	N/A	N/A	30	90		
4.17725	4.17775	N/A	20	N/A	N/A	30	90		
4.20725	4.20775	N/A	20	N/A	N/A	30	90		
6.21500	6.21800	N/A	20	N/A	N/A	30	90		
6.26775	6.26825	N/A	20	N/A	N/A	30	90		
6.31175	6.31225	N/A	20	N/A	N/A	30	90		
8.29100	8.29400	N/A	20	N/A	N/A	30	90		
8.36200	8.36600	N/A	20	N/A	N/A	30	90		
8.37625	8.38675	N/A	20	N/A	N/A	30	90		
8.41425	8.41475	N/A	20	N/A	N/A	30	90		
12.29000	12.29300	N/A	20	N/A	N/A	30	90		
12.51975	12.52025	N/A	20	N/A	N/A	30	90		
12.57675	12.57725	N/A	20	N/A	N/A	30	90		
13.36000	13.41000	N/A	20	N/A	N/A	30	90		
16.42000	16.42300	N/A	20	N/A	N/A	30	90		
16.69475	16.69525	N/A	20	N/A	N/A	30	90		
16.80425	16.80475	N/A	20	N/A	N/A	30	90		
25.50000	25.67000	N/A	20	N/A	N/A	30	90		
37.50000	38.25000	N/A	20	N/A	N/A	100	300		
73.00000	74.60000	N/A	20	N/A	N/A	100	300		
74.80000	75.20000	N/A	20	N/A	N/A	100	300		
108.00000	121.94000	N/A	20	N/A	N/A	150	450		
123.00000	138.00000	N/A	20	N/A	N/A	150	450		
149.90000	150.05000	N/A	20	N/A	N/A	150	450		
156.52475	156.52525	N/A	20	N/A	N/A	150	450		
156.70000	156.90000	N/A	20	N/A	N/A	150	450		
162.01250	167.17000	N/A	20	N/A	N/A	150	450		
167.72000	173.20000	N/A	20	N/A	N/A	150	450		
240.0	285.0	N/A	20	N/A	N/A	200	600		
322.0	335.4	N/A	20	N/A	N/A	200	600		
399.9	410.0	N/A	20	N/A	N/A	200	600		
608.0	614.0	N/A	20	N/A	N/A	200	600		
960.0	1240.0	N/A	20	N/A	N/A	500	1500		
1300.0	1427.0	N/A	20	N/A	N/A	500	1500		
1435.0	1626.5	45.18	20	25.2	18.2	500	1500	1,597	
1645.5	1646.5	N/A	20	N/A	N/A	500	1500		
1660.0	1710.0	N/A	20	N/A	N/A	500	1500		
1718.8	1722.2	N/A	20	N/A	N/A	500	1500		
2200.0	2300.0	55.06	20	35.1	56.6	500	1500	2236	
2310.0	2390.0	N/A	20	N/A	N/A	500	1500		
2483.5	2500.0	N/A	20	N/A	N/A	500	1500		
2655.0	2900.0	55.12	20	35.1	57.0	500	1500	2,875	
3260.0	3267.0	N/A	20	N/A	N/A	500	1500		
3332.0	3339.0	N/A	20	N/A	N/A	500	1500		
3345.8	3358.0	N/A	20	N/A	N/A	500	1500		
3600.0	4400.0	N/A	20	N/A	N/A	500	1500		