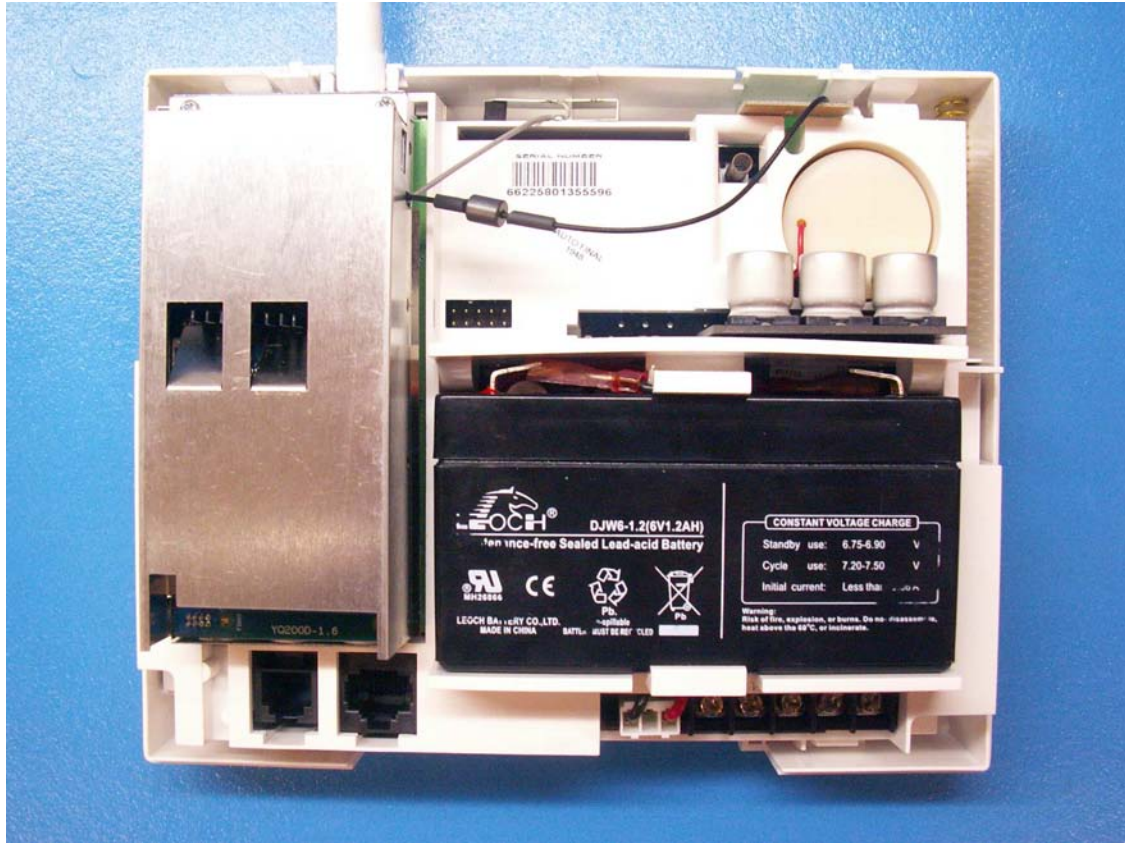




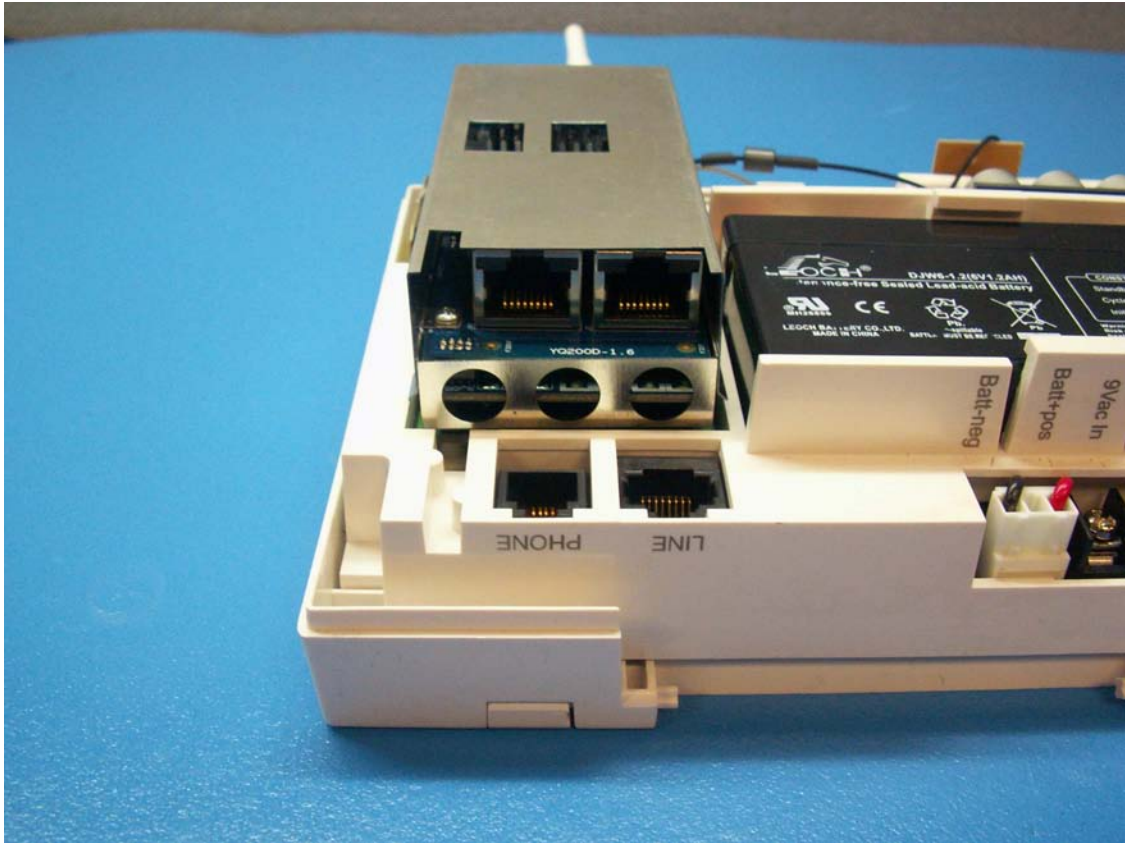
Front view of Simon iXT



Back view of Simon iXT with FCC label

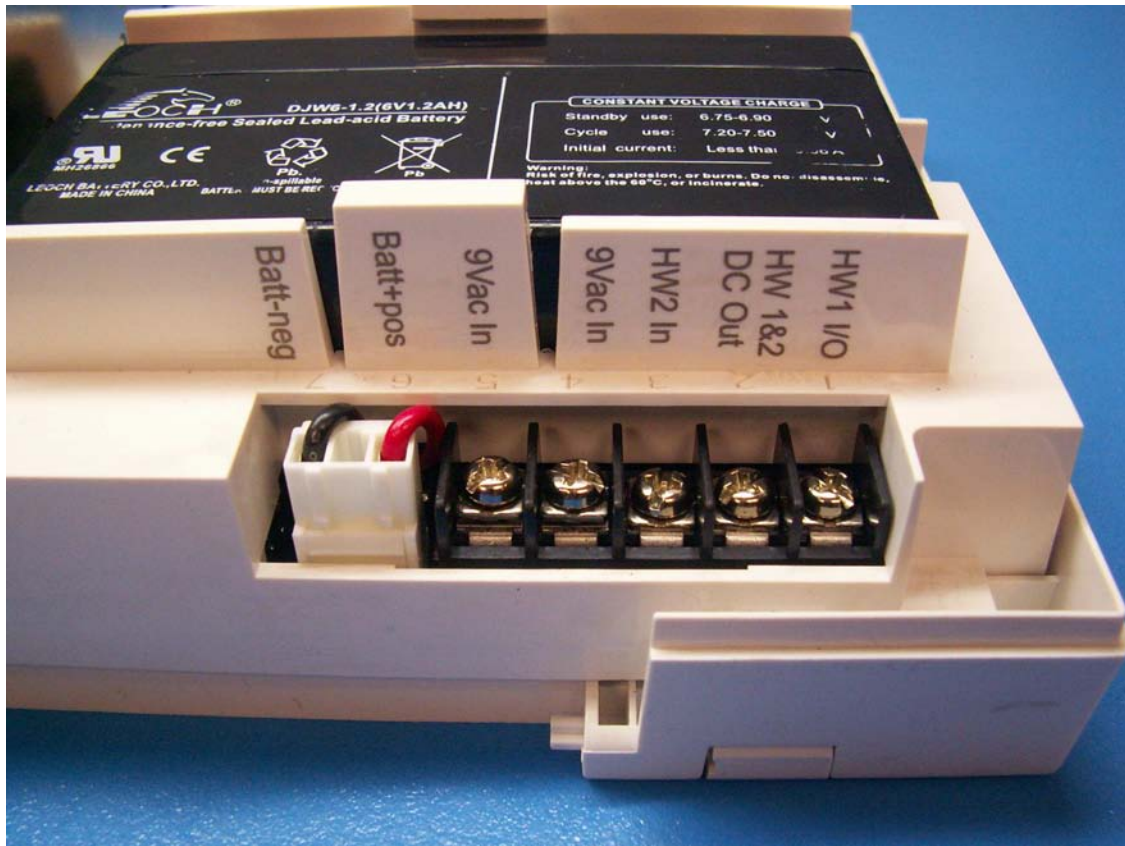


Simon iXT back view with cover removed

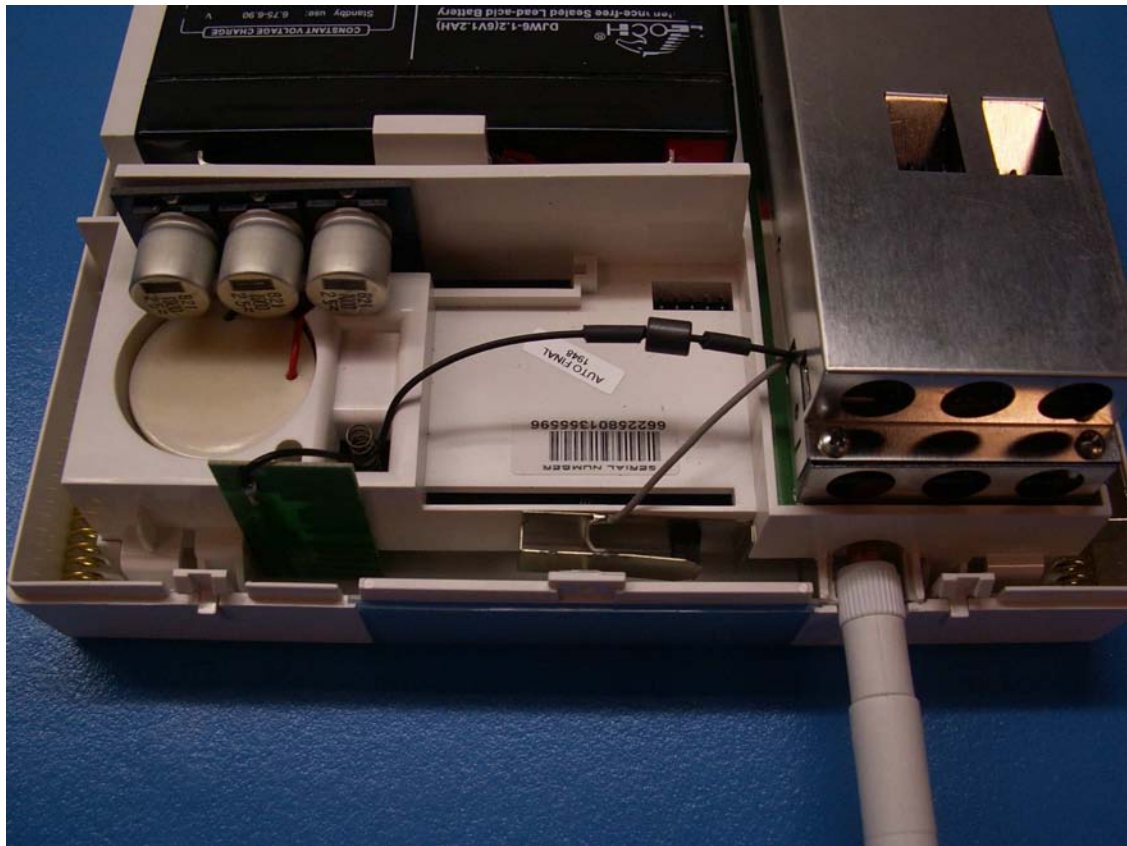


Simon iXT back bottom view, showing connector ports for iXT module

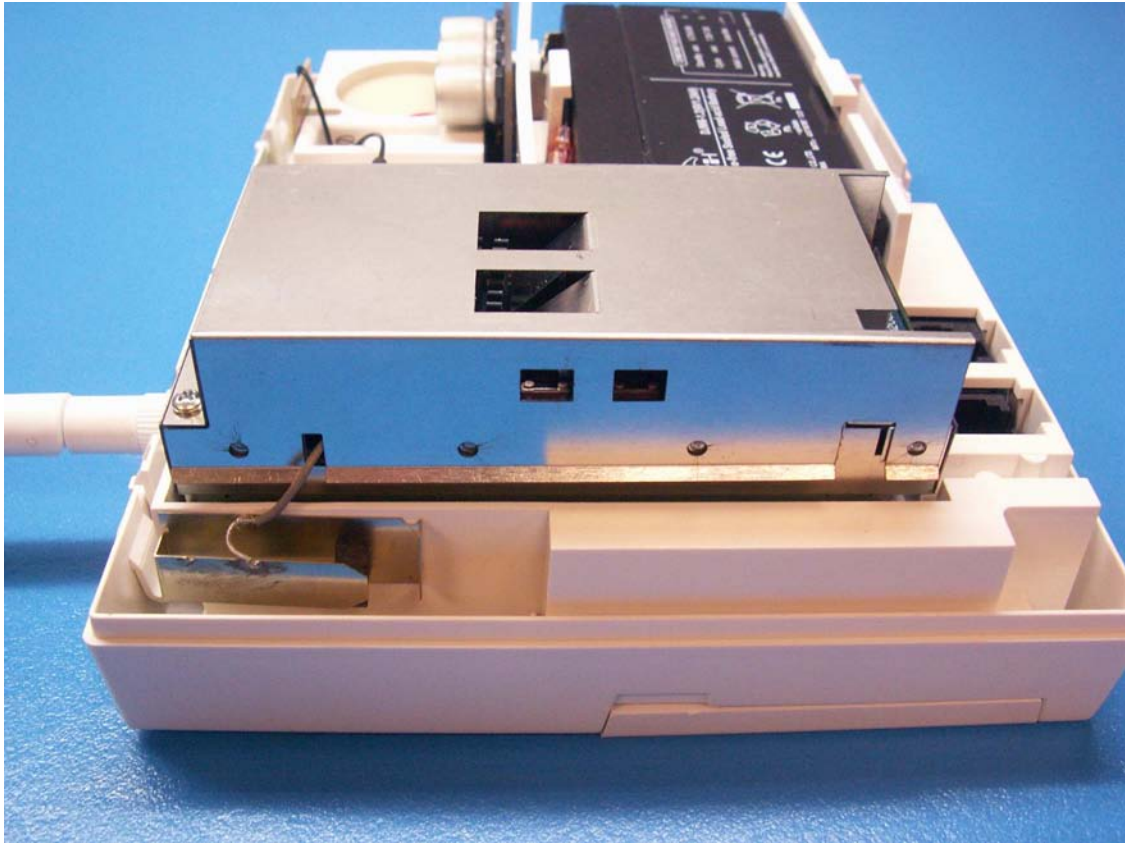




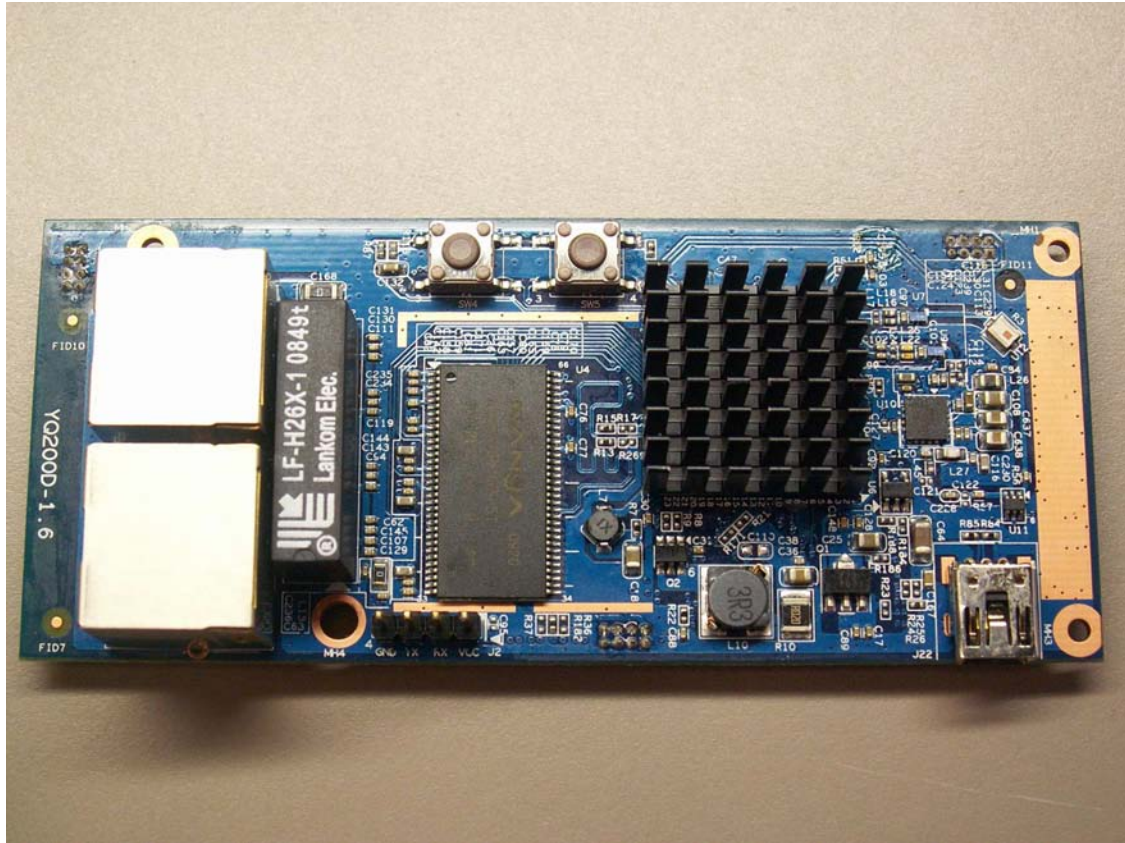
Simon iXT back bottom view, showing power connectors



Simon iXT back top view, showing Zwave and WiFi Rx antenna placement

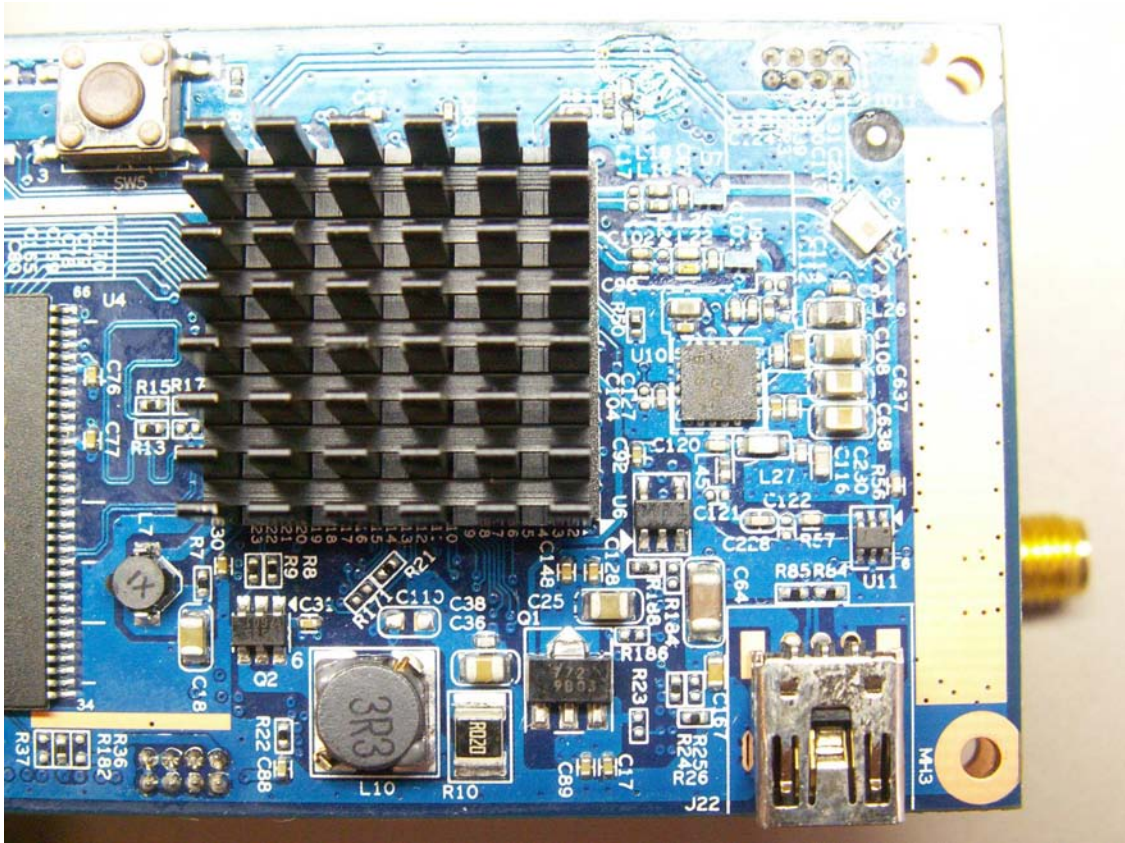


Simon iXT back side view, showing WiFi Tx/Rx antenna placement. This view also shows the large metal shield for the “iXT” module. The iXT module is two PCB’s that are connected together and placed inside the shown shield. The pictures on the remaining pages are pictures of these PCBs, in order to show the circuitry inside the shield in the picture above.

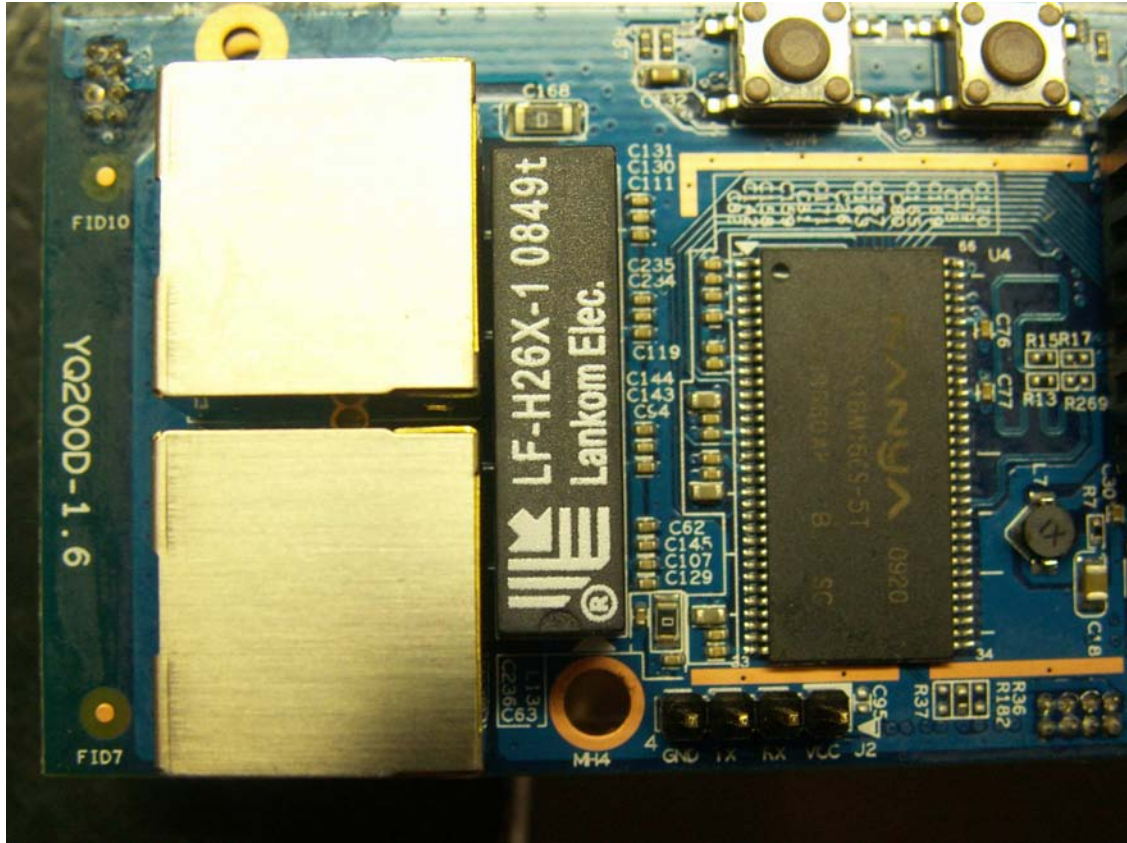


Top of upper iXT board. The two metal boxes on the left are Ethernet ports. These are not shields. The heatsink on the right half of the board is placed on top of the Broadcom WiFi module.

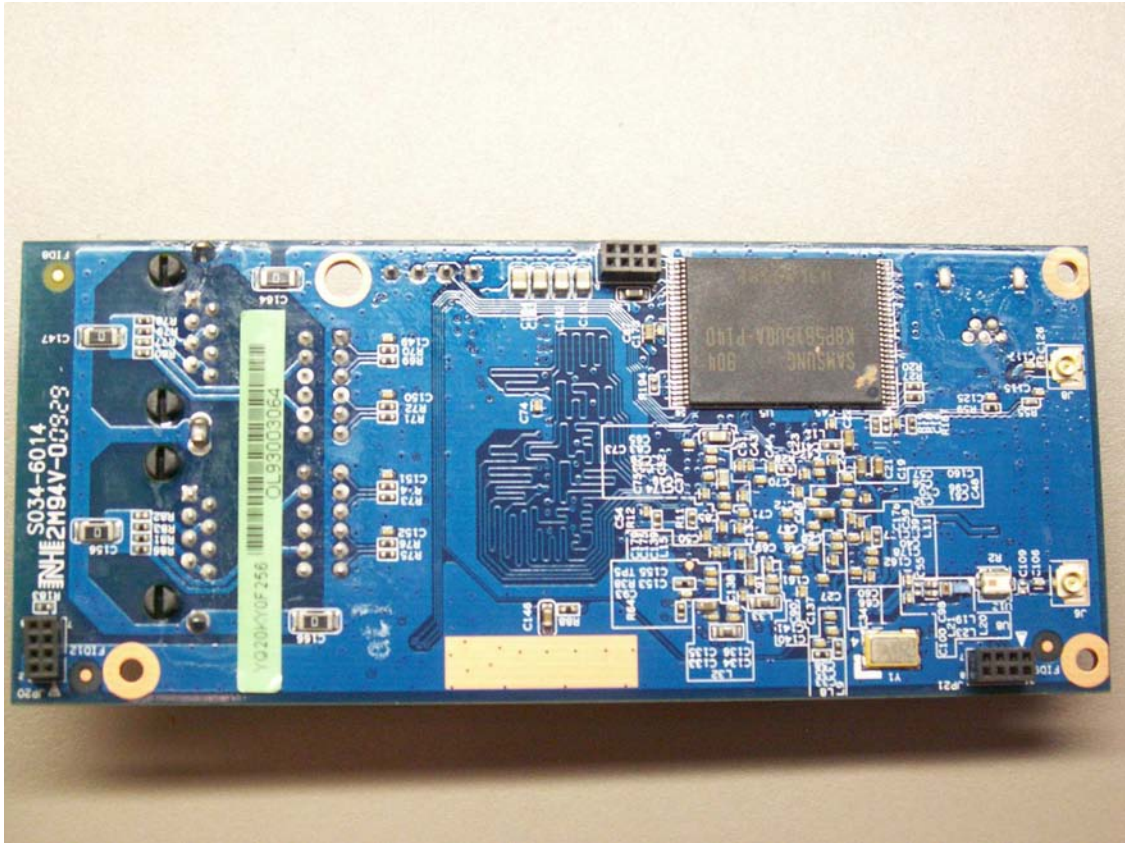




Top of upper iXT board

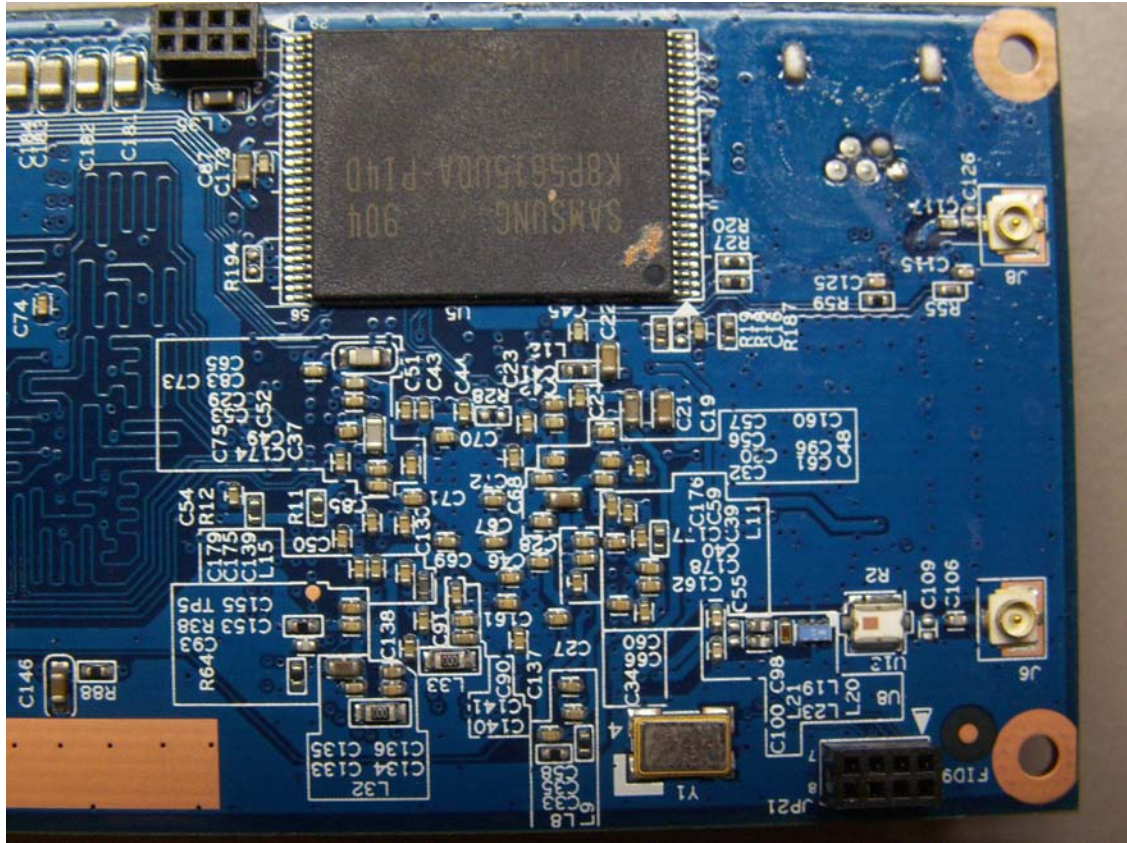


Top of upper iXT board. The metal boxes are the Ethernet/LAN ports. These are not shields and they cannot be removed.



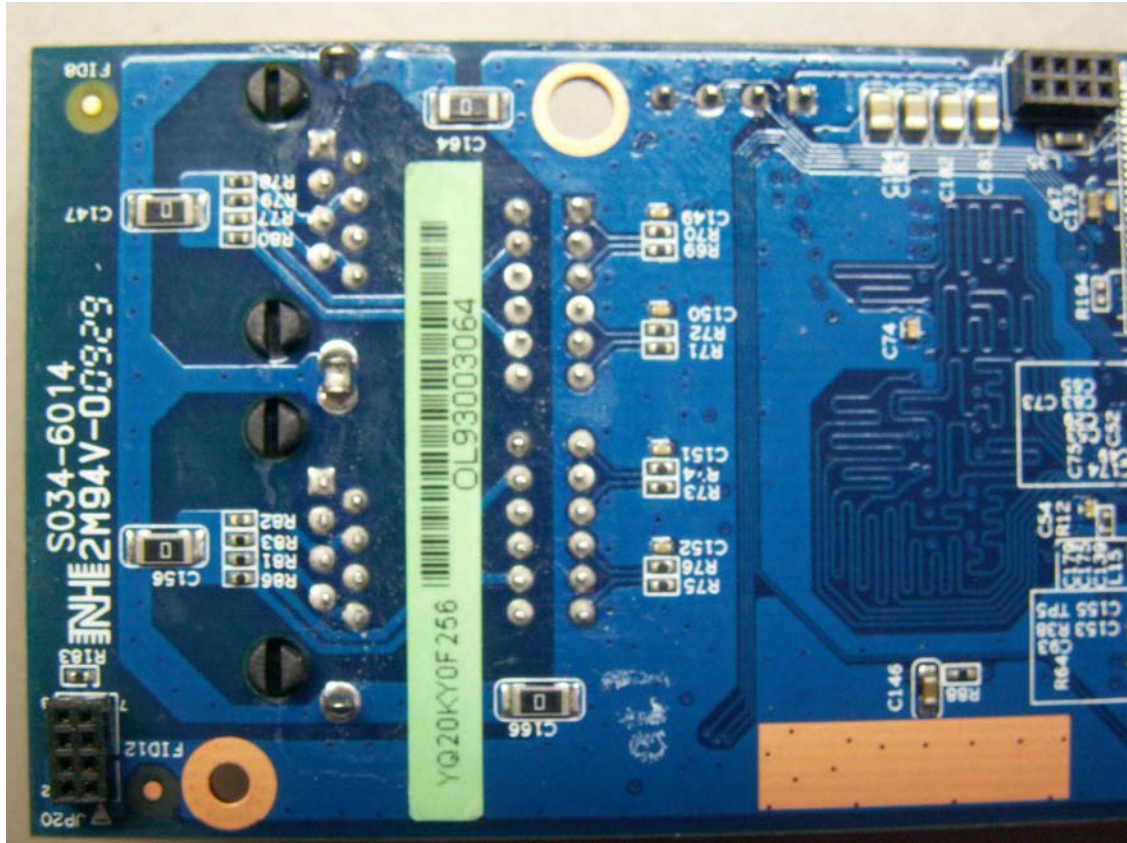
Bottom side of upper iXT board.



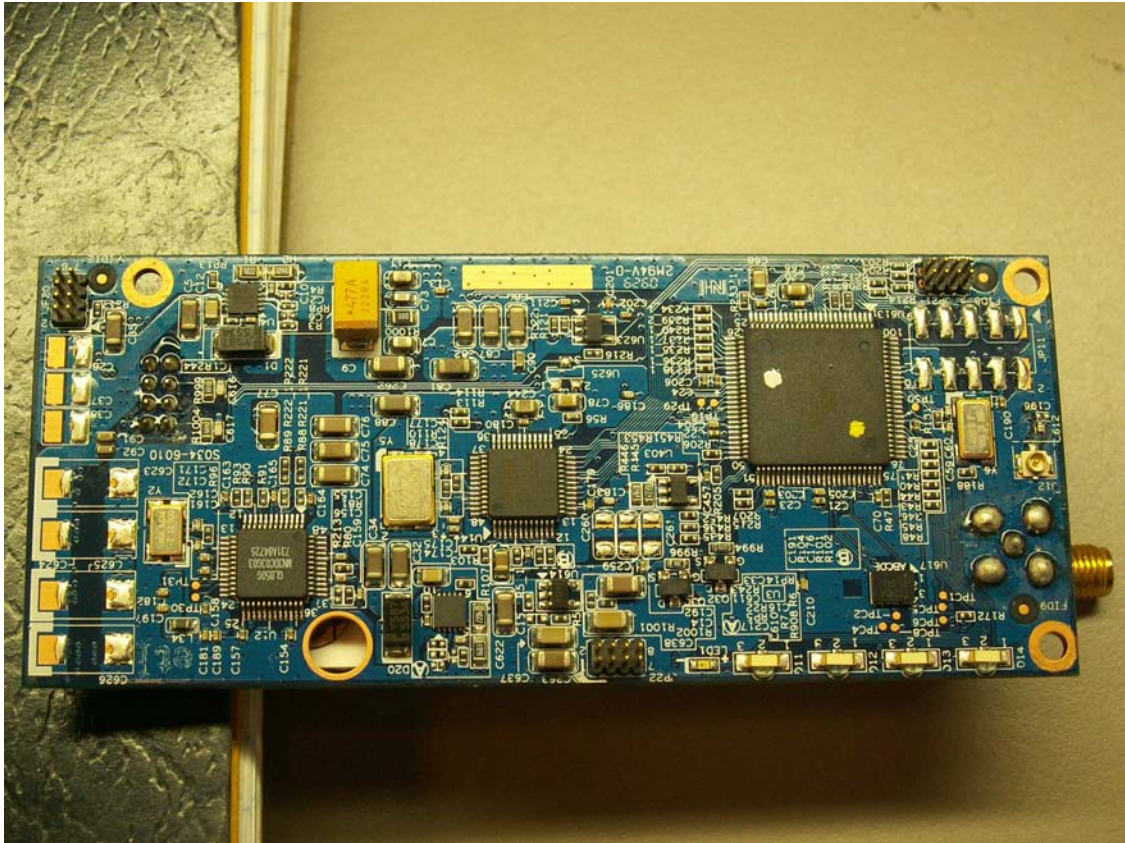


Bottom side of upper iXT board



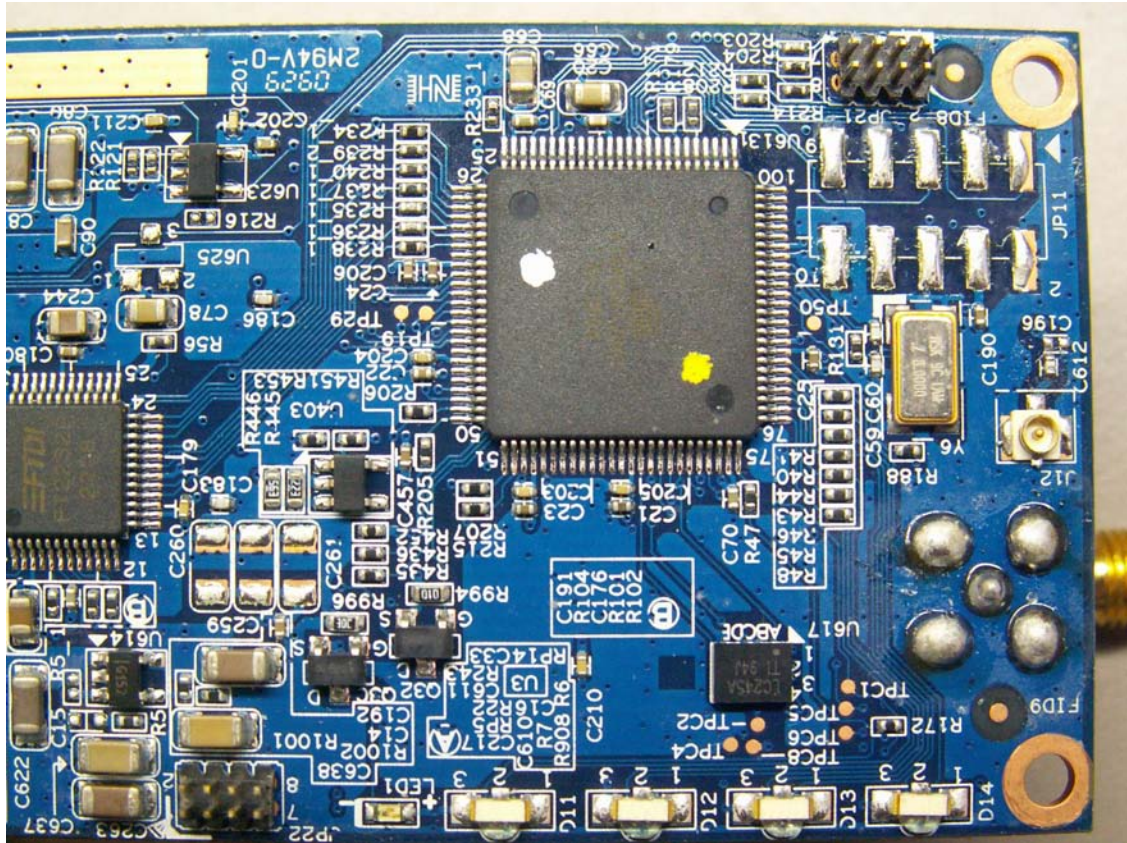


Bottom side of upper iXT board

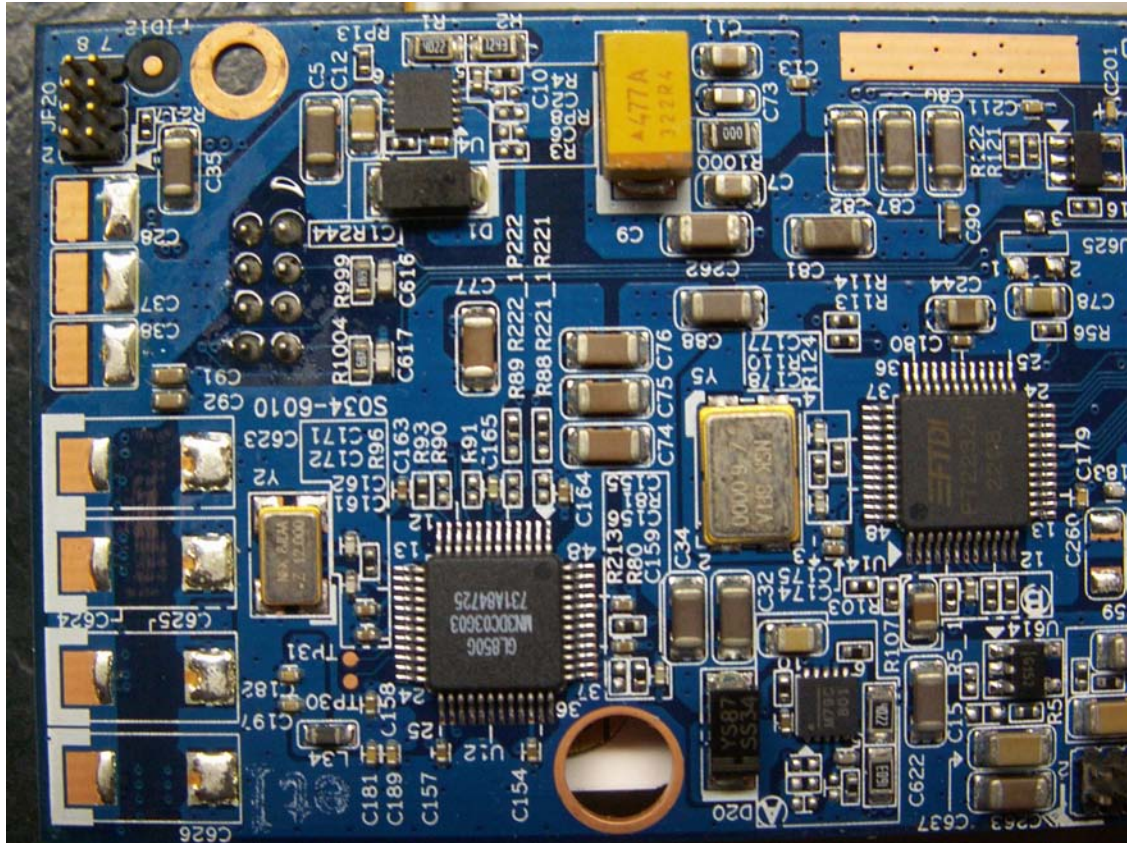


Top side of lower iXT board



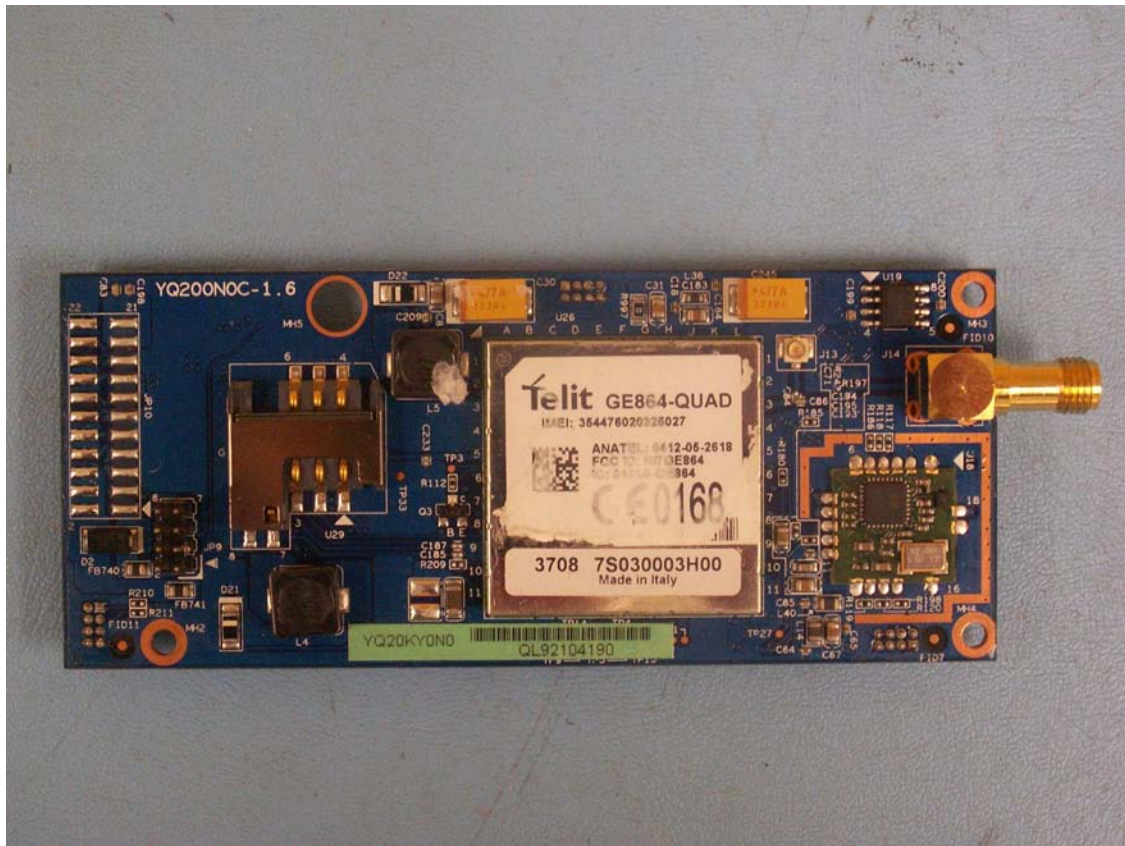


Top side of lower iXT board

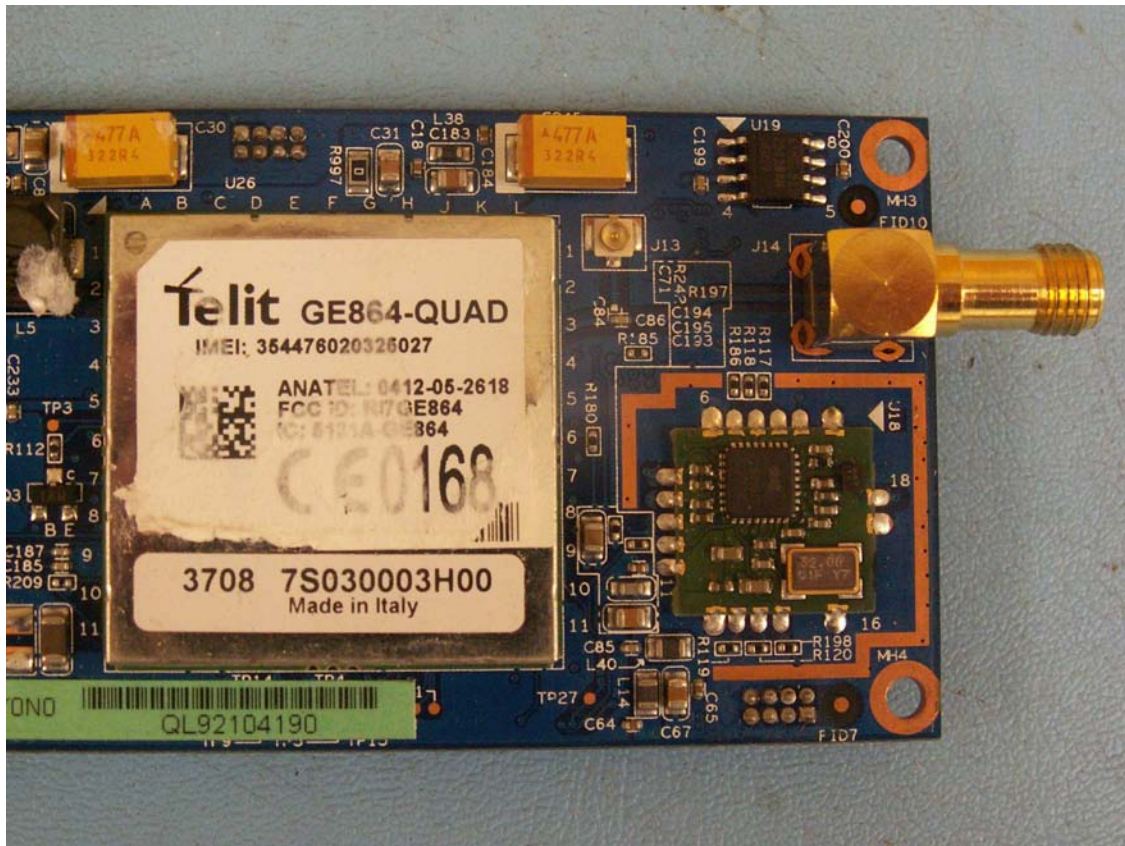


Top side of lower iXT board

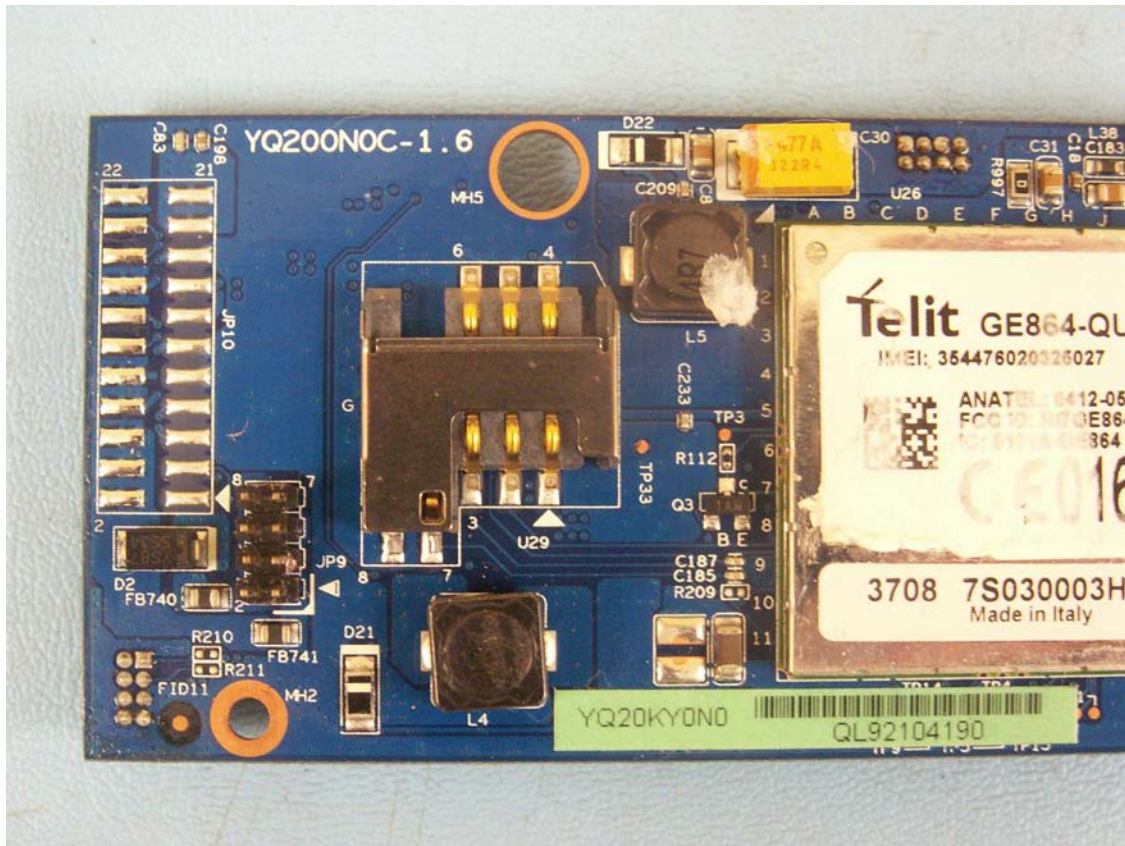




Bottom side of lower iXT board. The large metal piece in the center is the Telit GSM/GPRS module. This is not a shield and cannot be removed without destroying the Telit module. This module comes from the manufacturer in this package.



Bottom side of lower iXT board



Bottom side of lower iXT board