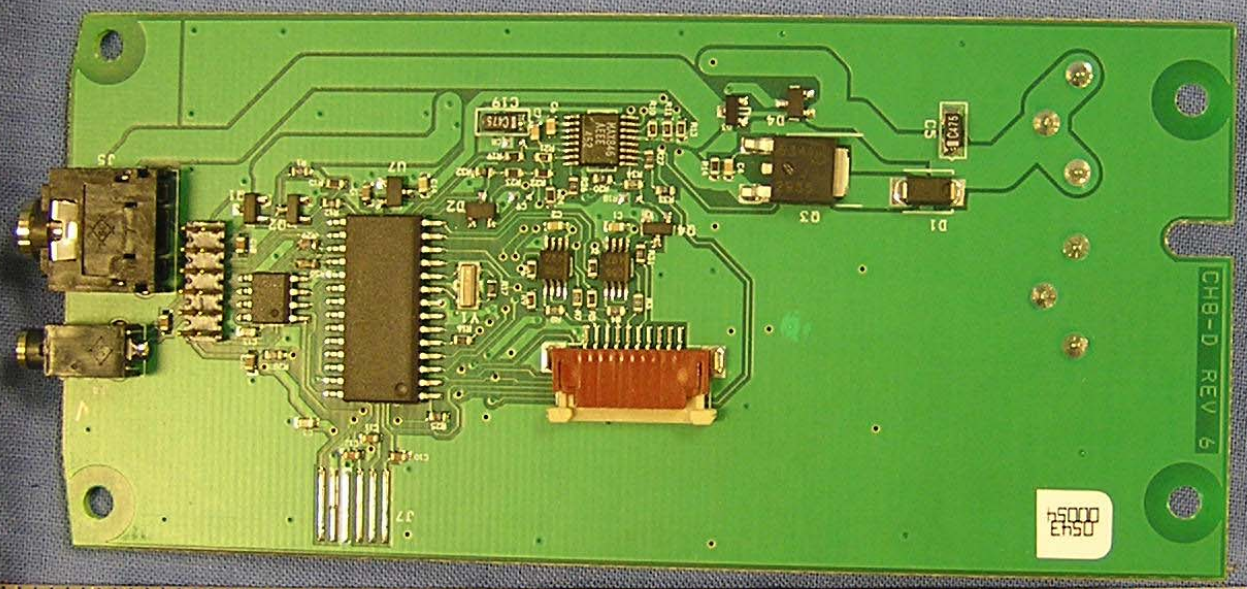


Made in U.S.A.

Flexible Stainless Steel

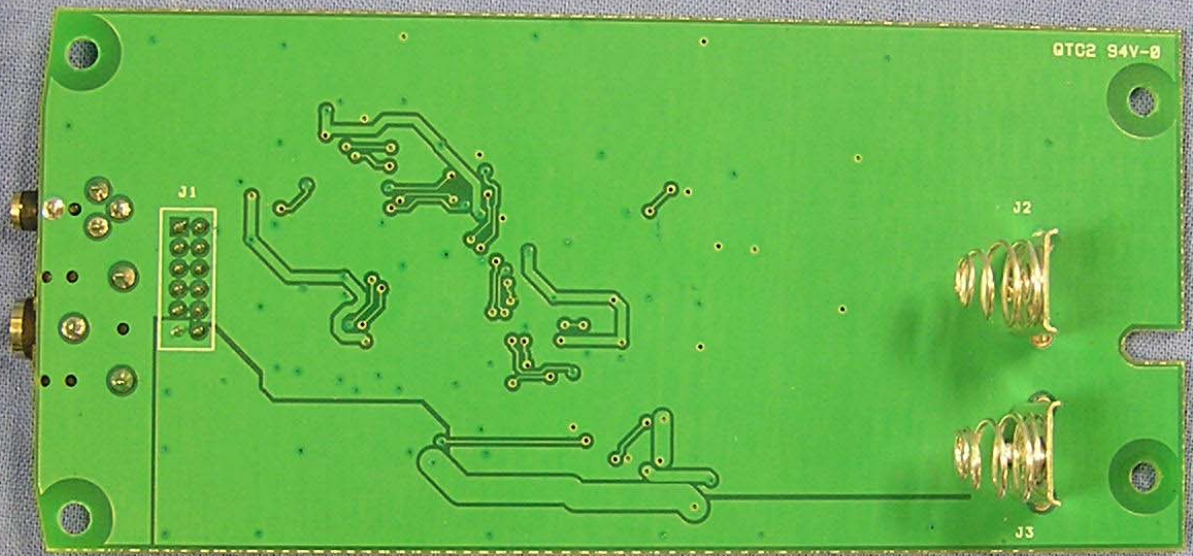




0543  
0052

CH8-D REV 6





QTC2 94V-8

J1

J2

J3

1

2

3

4

5

6

7

8

U.S.A.

Flexible Stainless Steel

28

27

26

25

24

23

22

21

20

19

18

17

16

15

14

13

12

11

10

4

5

6

7

8

9

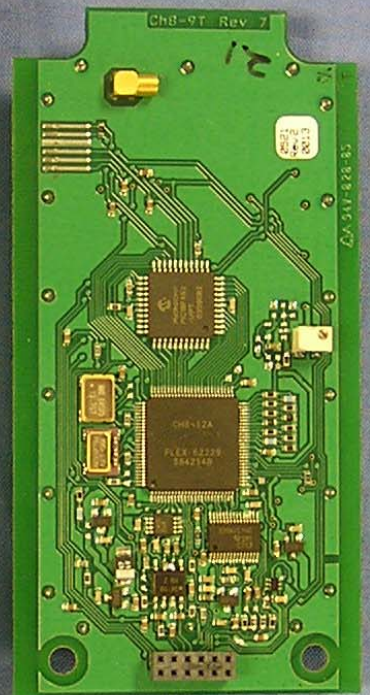
25FT



25 FT  
FT & IN  
INCHES

2 3 4 5 6 7 8 9 10

1/8 1/4 3/8 1/2 5/8 3/4 7/8



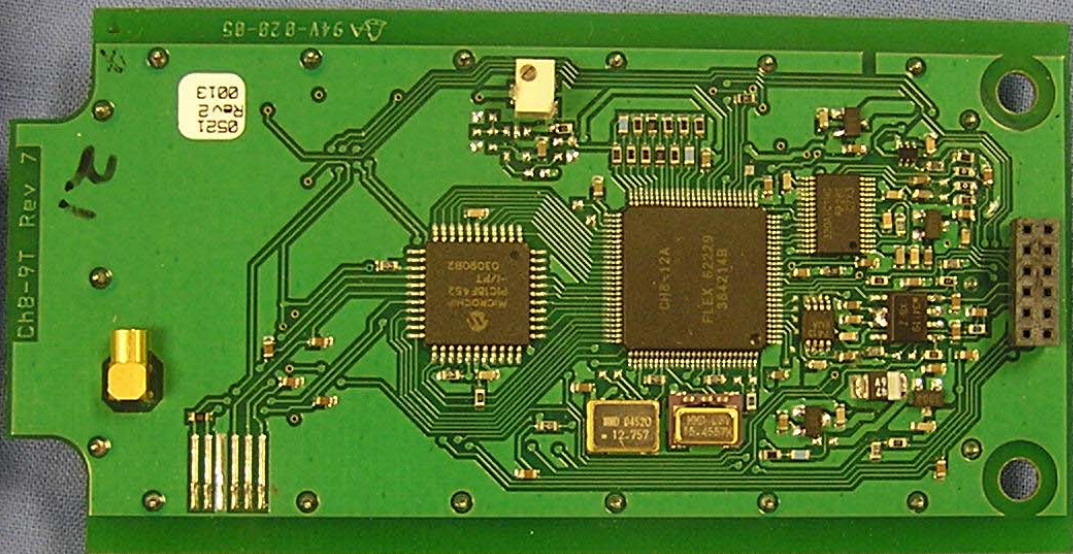
1 2 3 4 5 6 7 8 9 10

in U.S.A.

Flexible Stainless Steel

3 4 5 6 7 8 9 10 11 12 13 14 15 16 17 18 19 20 21 22 23 24 25 26 27 28 29





25FT

5

6

7

8

9

2

3

4

5

6

7

8

Flexible Stainless Steel

27 26 25 24 23 22 21 20 19 18 17 16 15 14 13 12 11 10





25FT

5

6

7

8

9

2

3

4

5

6

7

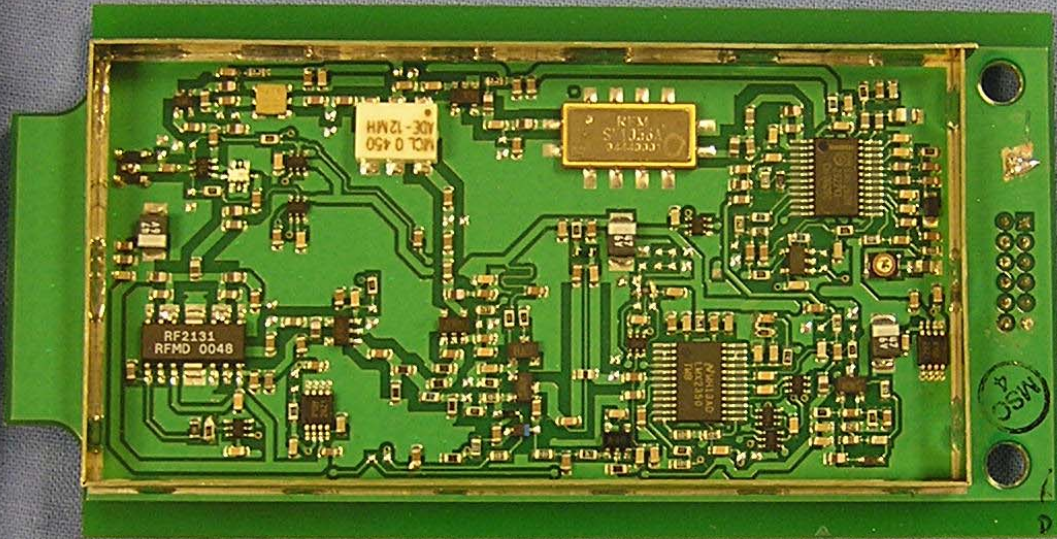
8

Flexible Stainless Steel

27 26 25 24 23 22 21 20 19 18 17 16 15 14 13 12 11 10

MSC  
4





25FT

5

6

7

8

9

2

3

4

5

6

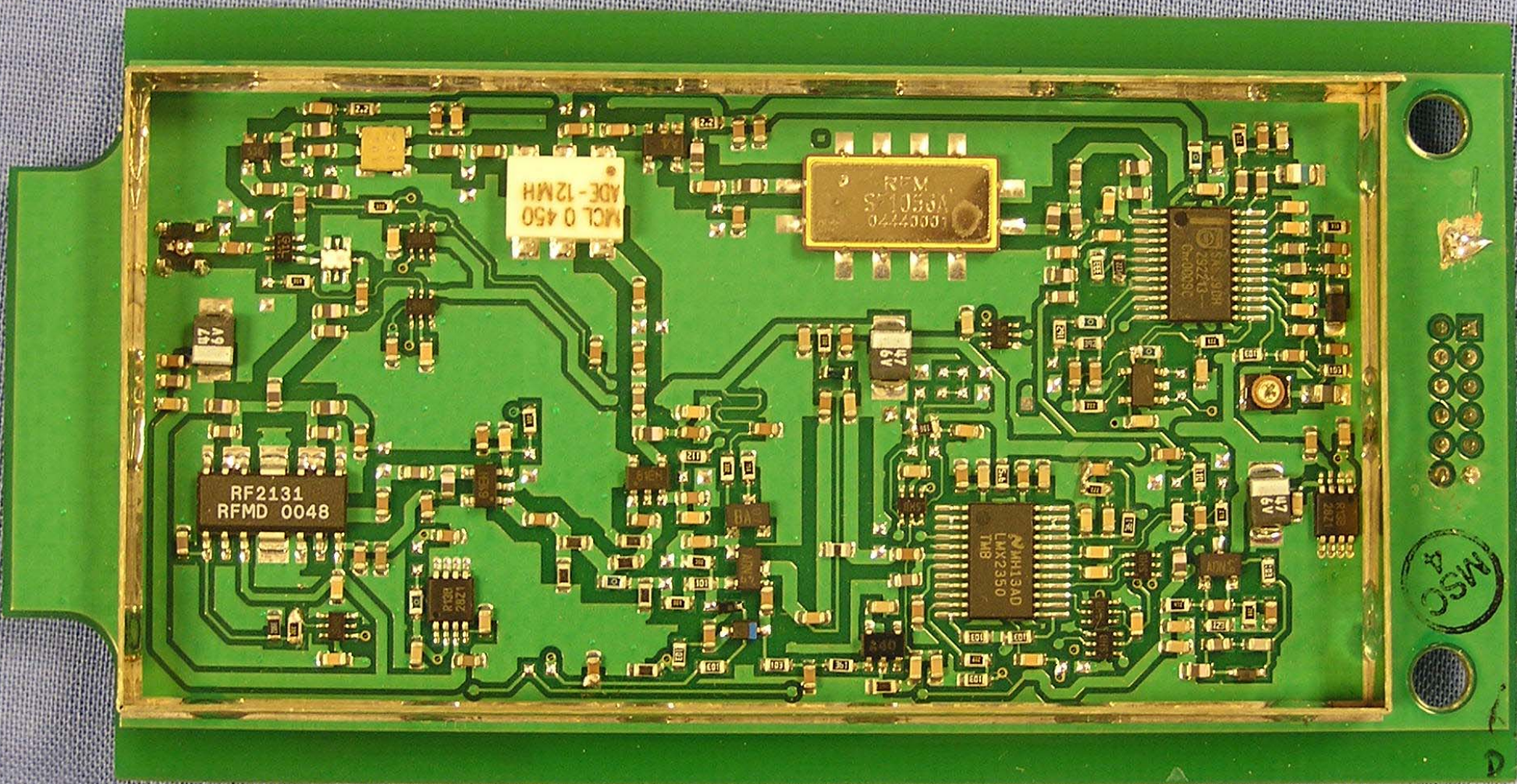
7

8

Flexible Stainless Steel

0 11 12 13 14 15 16 17 18 19 20 21 22 23 24 25 26 27 28





RF2131  
RFMD 0048

MCL 0 450  
ADE-12MH

10007720  
Ver 1.5  
RFM

NAH13A0  
LHX2350  
TMB

47  
6V

MSC  
4  
OSW