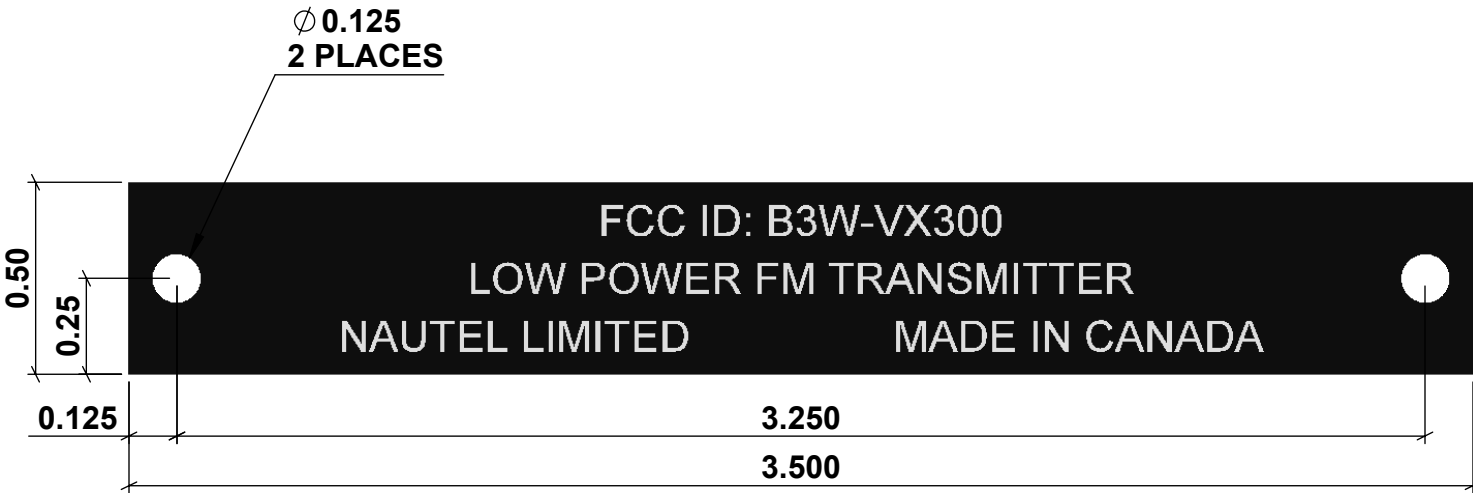



REV.	DCN#	REVISION DESCRIPTION	DWN BY	APPD BY	APPD DATE
A	SCR-1932	INITIAL ISSUE	JPD	M.WOODS	02DEC2020



NOTE:  
PHOTOSENSITIVE ANODIZED ALUMINUM PROCESSED FOR  
WHITE METAL CHARACTERS ON BLACK BACKGROUND

<div>MATERIAL</div> <div>.032 THK ALUM ALLOY 5052-H34</div>		<div>SURFACE FINISH: SEE NOTE</div>		
ALL ELECTRONIC ASSEMBLIES ARE TO MEET LATEST REVISION OF IPC-A-610 OR IPC-A-620(CLASS 2 ) UNLESS OTHERWISE SPECIFIED. WHEN OTHERWISE SPECIFIED REFER TO THE NAUTEL STANDARD AS APPLICABLE.		<div></div>		
UNLESS SPECIFIED TOLERANCE ON TORQUE VALUES SHALL BE +/-10%				
ALL MATERIALS SHALL MEET THE ASTM SPEC REFERENCED IN THE 'MATERIAL' SECTION OF THE TITLE BLOCK.		TITLE		
<div>UNLESS OTHERWISE STATED: DIMENSIONS ARE IN INCHES/WEIGHT IN POUNDS INSIDE BEND RAD = MATL THK FOR TOLERANCE INTERPRETATION SEE Q0001.WS or (FINISHES &amp; FABRICATION ) 3 PLACE DECIMAL ±.010 &lt; 24 3 PLACE DECIMAL ±.020 &gt; 24 2 PLACE DECIMAL ±.020 1 PLACE DECIMAL ±.030 FRACTIONAL ±1/32</div> <div>DO NOT SCALE DRAWING</div>		LABEL, ANODIZED ALUM, XMTR, LPFM, VX300		
		SIZE A	CODE IDENT NO 37338	DRAWING NO 235-5071
		SHEET 1 OF 1		