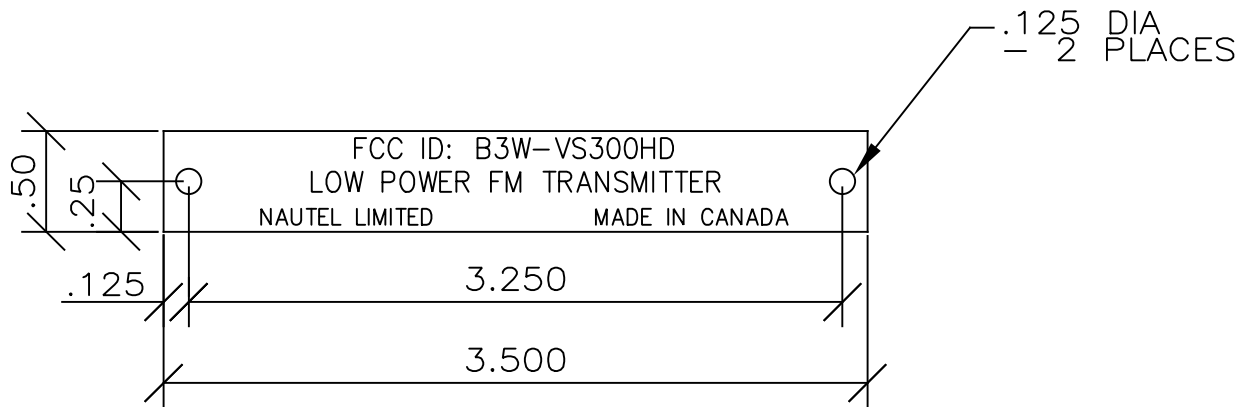




REV.	DCN#	REVISION DESCRIPTION	DWN BY	APPD BY	APPD DATE
A	-	INITIAL ISSUE	JPD	M.WOODS	08FEB2021



NOTES:
 PHOTOSENSITIVE ANODIZED ALUM. PROCESSED FOR WHITE METAL
 CHARACTERS ON BLACK BACKGROUND

MATERIAL .032 THK ALUM ALLOY 5052-H34		SURFACE FINISH: SEE NOTE <u>MATERIAL PROTECTIVE COATING INFORMATION:</u>	
ALL ELECTRONIC ASSEMBLIES ARE TO MEET LATEST REVISION OF THE IPC-A-610 OR IPC-A-620 (CLASS 2) UNLESS OTHERWISE SPECIFIED. WHEN OTHERWISE SPECIFIED REFER TO THE NAUTEL STANDARD AS APPLICABLE.			
UNLESS SPECIFIED TOLERANCE ON TORQUE VALUES SHALL BE +/-10 %			
ALL MATERIALS SHALL MEET THE ASTM SPEC REFERENCED IN THE 'MATERIAL' SECTION OF THE TITLE BLOCK.		TITLE LABEL, FCC, VS300HD LPFM	
UNLESS OTHERWISE STATED: DIMENSIONS ARE IN INCHES/WEIGHT IN POUNDS INSIDE BEND RAD = MATL THK FOR TOLERANCE INTERPRETATION SEE Q0001.WS (FINISHES & FABRICATION)		PROPRIETARY & CONFIDENTIAL THE INFORMATION CONTAINED IN THIS DRAWING IS THE SOLE PROPERTY OF NAUTEL. ANY REPRODUCTION IN PART OR AS A WHOLE WITHOUT WRITTEN PERMISSION FROM NAUTEL IS PROHIBITED.	
3 PLACE DECIMAL ±.010 < 24 3 PLACE DECIMAL ±.020 > 24 2 PLACE DECIMAL ±.020 1 PLACE DECIMAL ±.030 FRACTIONAL ±1/32		SIZE A	CODE IDENT NO 37338
DO NOT SCALE DRAWING		DRAWING NO 211-8019	
		3RD ANGLE PROJECTION 	
		SHEET 1 OF 1	