

PC2R  
94V-0  
0701

MAX4053  
EEP  
024

5X5

LTC1454  
47 9A49  
10N

H8/3044  
HD 9A1 S I  
6433044TF13  
S00 JAPAN

ALMEL  
AT90S8515  
4A1 0042

MAXIM  
MAX213EEAI  
9844

GP

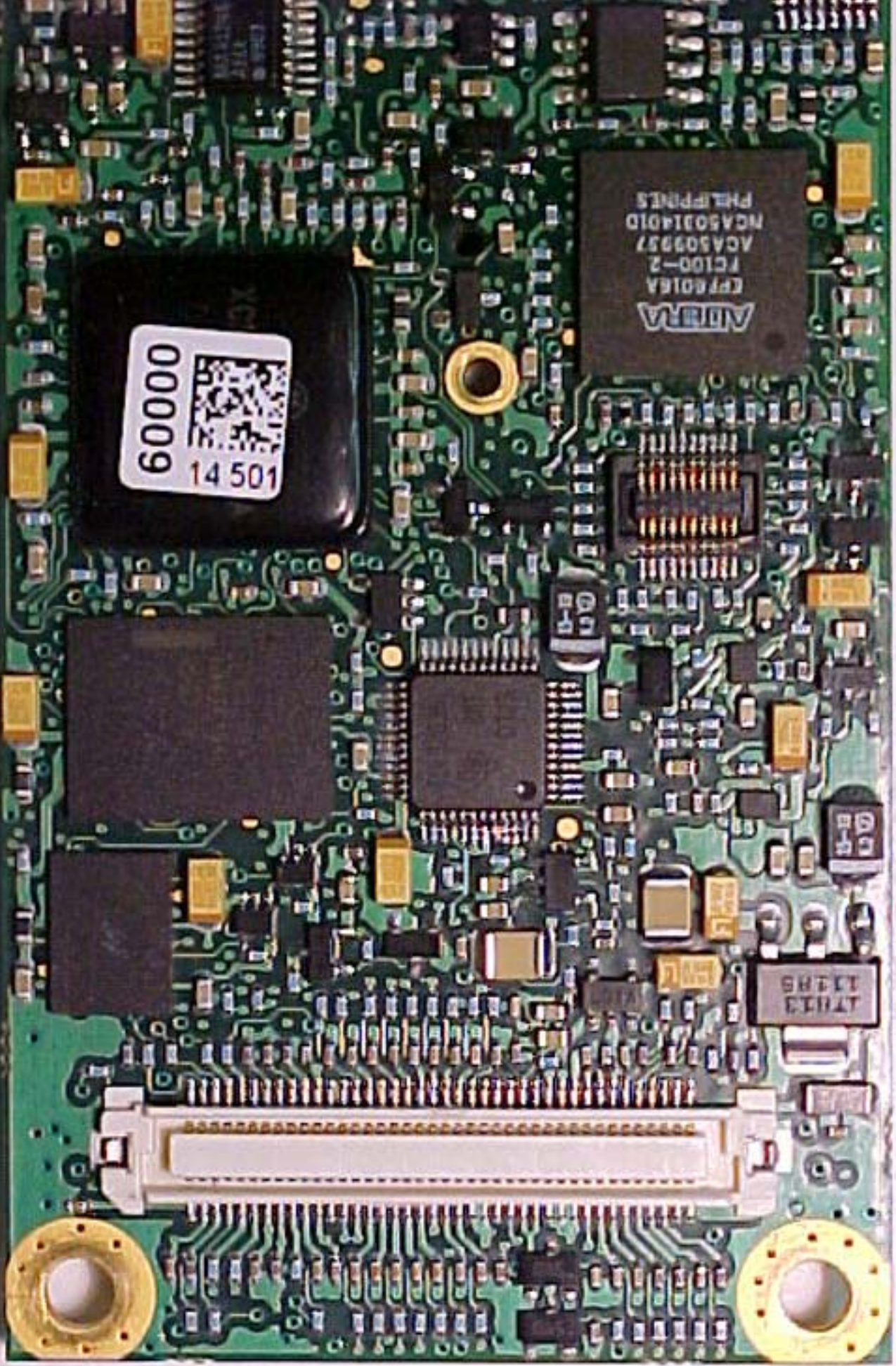


60000  
14 501

ABRMA  
EPT6016A  
FC100-2  
ACA509957  
NCA50314010  
PHILIPPINES

TY113  
13485

GR  
18





45SC20BA  
W 95

3  
E J

4  
C

RAKON  
V70201-2  
12.000MHz  
0101

0701

94V-0

PC2R

559X405

007407M  
1001 9A  
12.000MHz

5X5

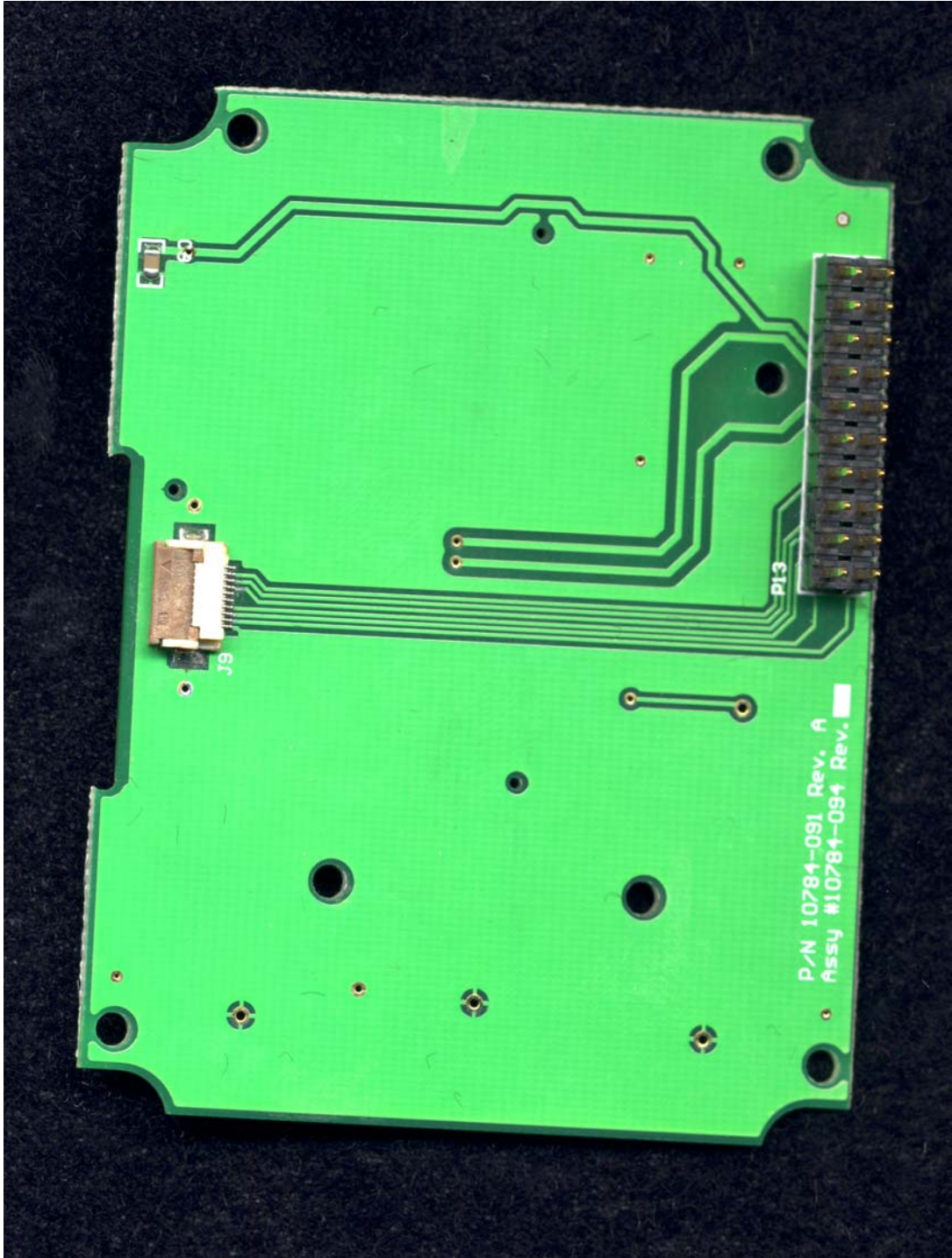
HB/3044  
HD 9A1 S I  
6433044TF13  
S00 JAPAN

67 9849  
G1434  
10N

102  
100  
200

102  
100  
200



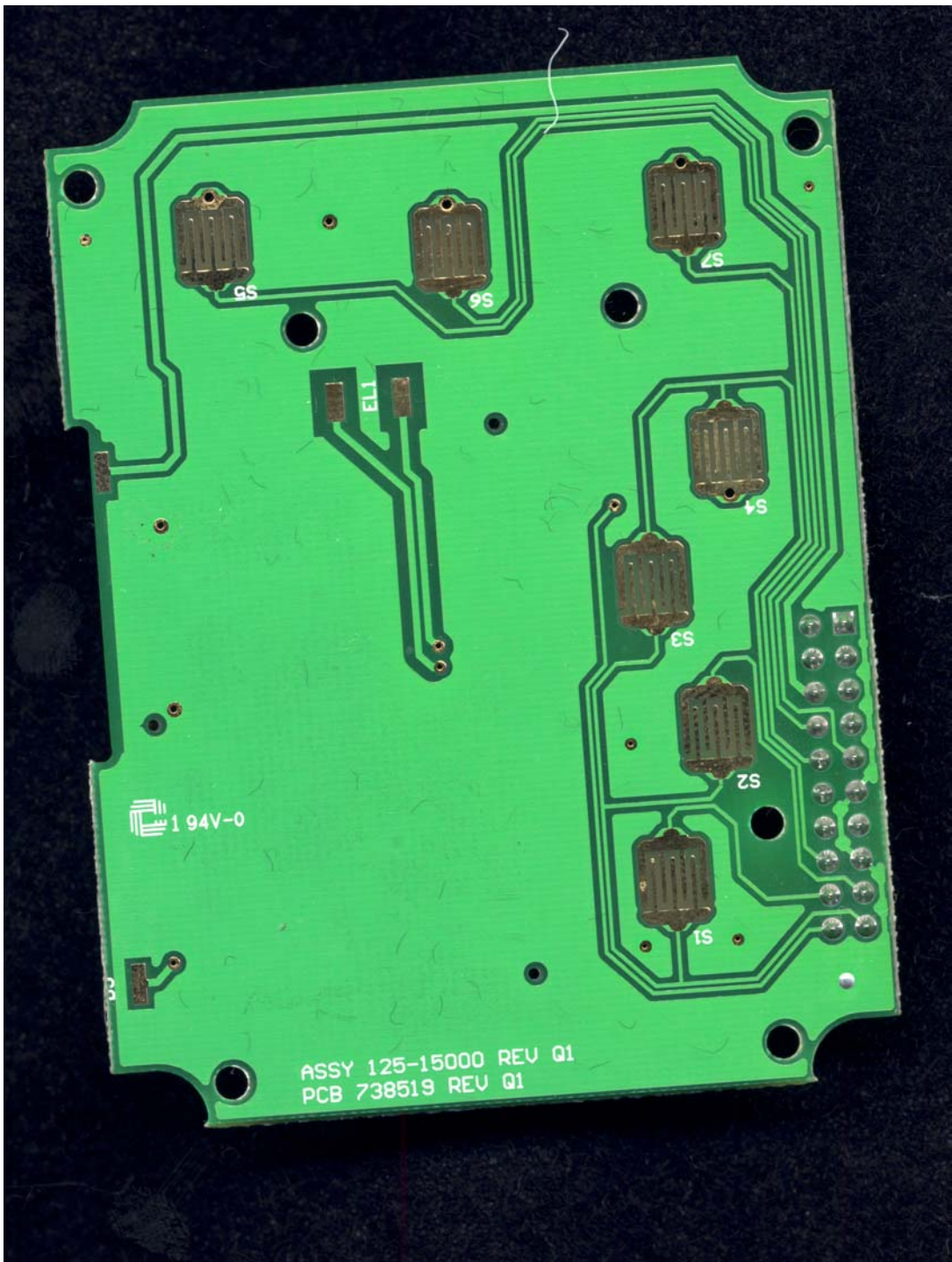


P/N 10784-091 Rev. A  
Assy #10784-094 Rev.

JS

P13

C3



1 94V-0

ASSY 125-15000 REV Q1  
PCB 738519 REV Q1

S5

S6

S7

ELL

S4

S3

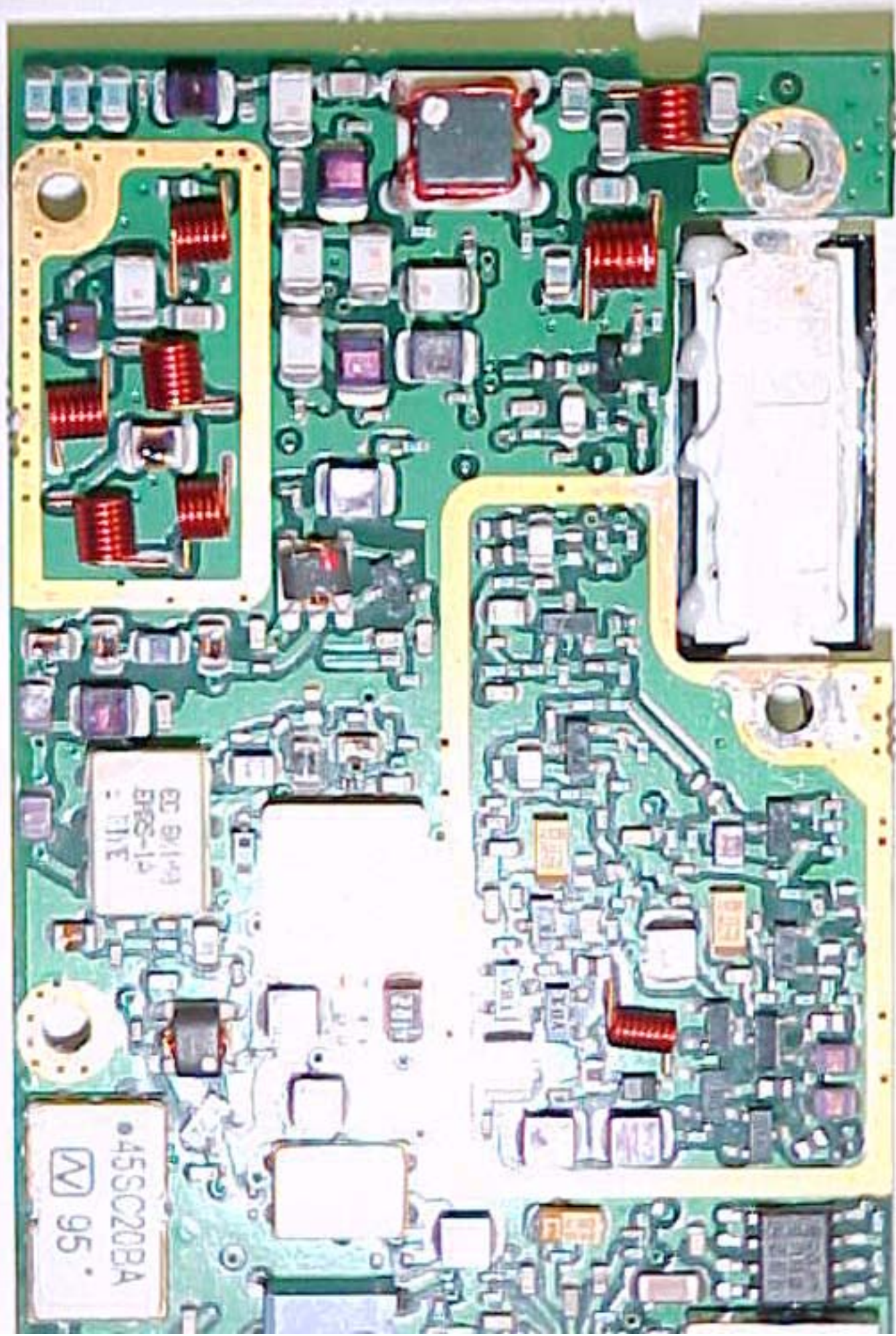
S2

S1





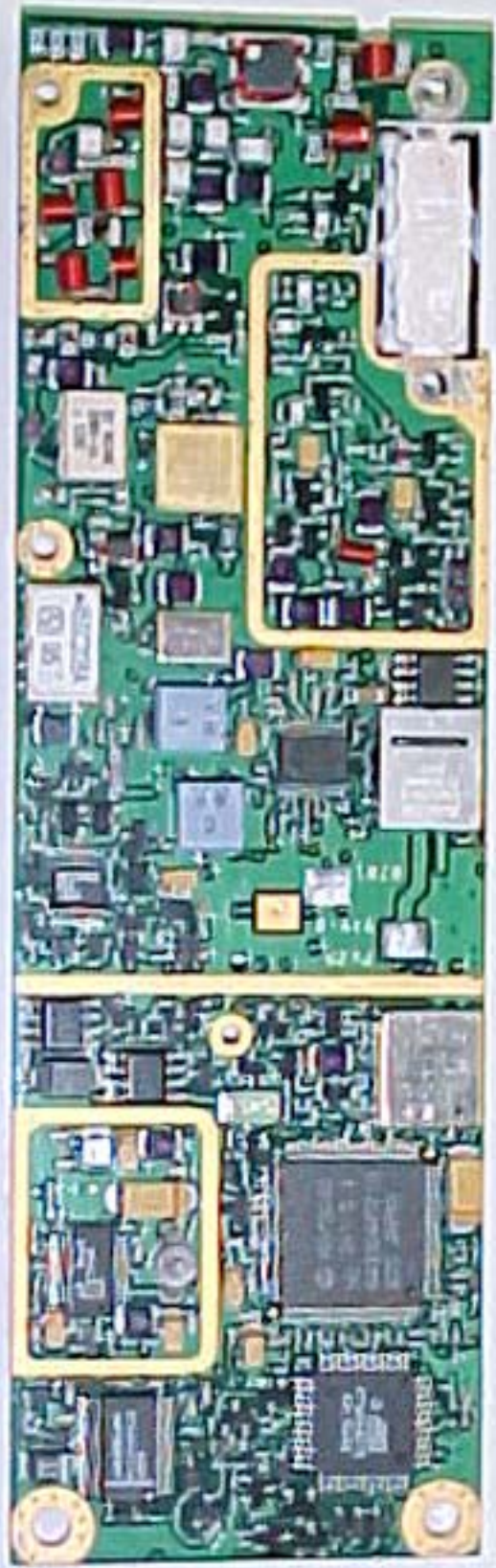




455C20BA  
N 95

ET 81149  
81-284B  
: 111E















MAX534  
3333  
3345

MAX523  
REAR 9842  
MAX523

4300549-1  
Rev. 0.1

AD607  
AR5  
0020  
I17427

151A  
20

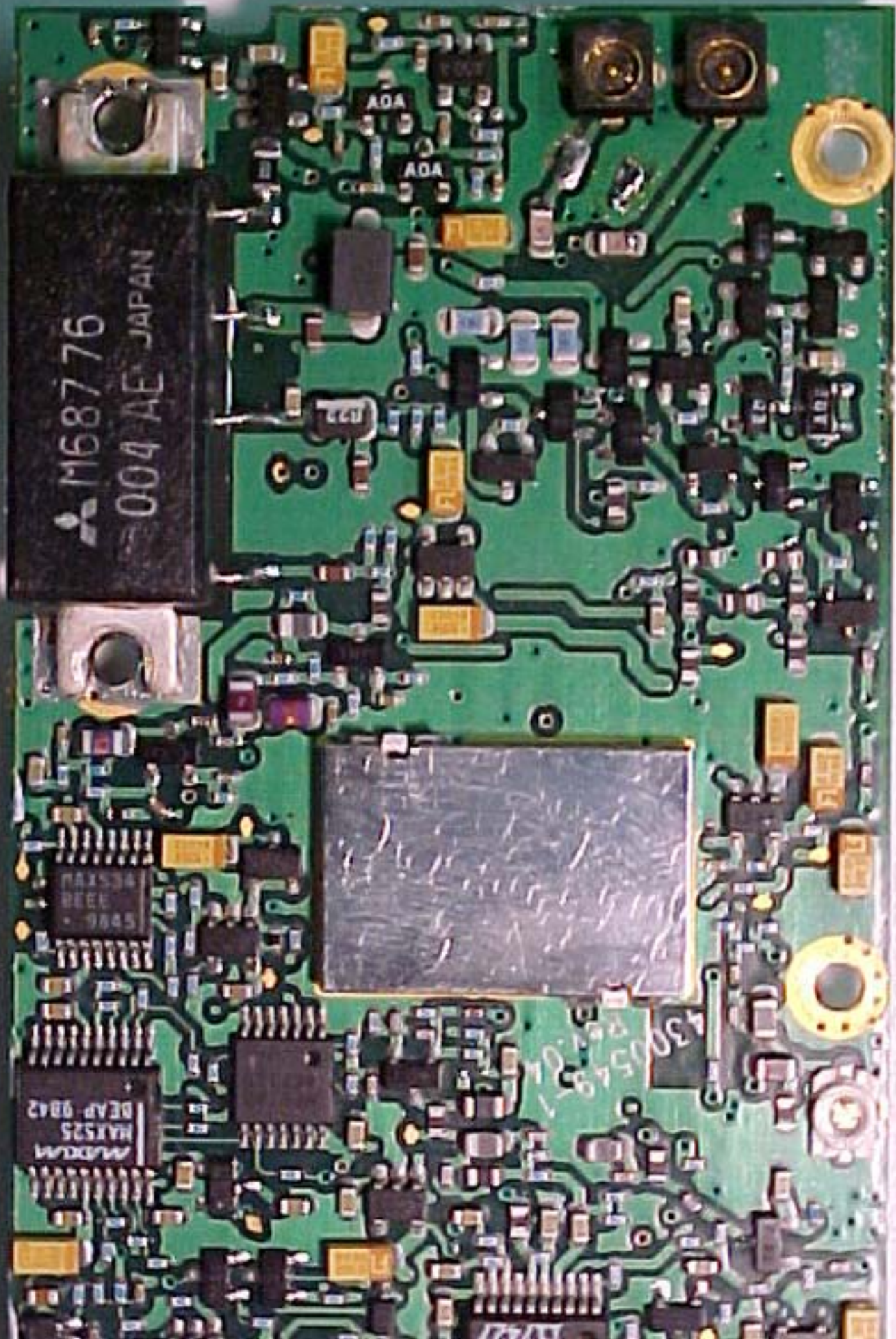
MAXLINE  
AS12

ADDA  
CF6016A  
FC100-2  
ACA509937  
NDA503140D  
P18LPP12B

60000  
14 501

Q7  
R1-21





M68776  
004 AE JAPAN

MAX534  
88EE  
9845

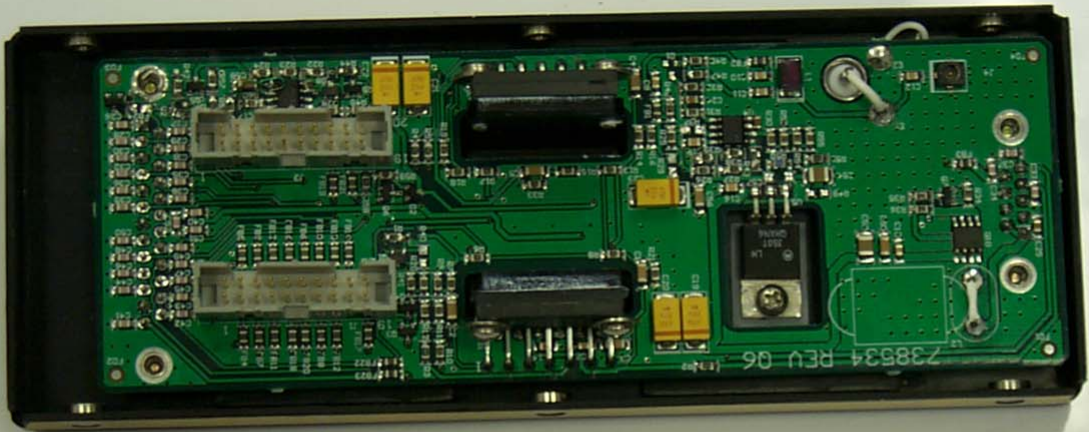
MAX525  
DEAP 9842

AOA

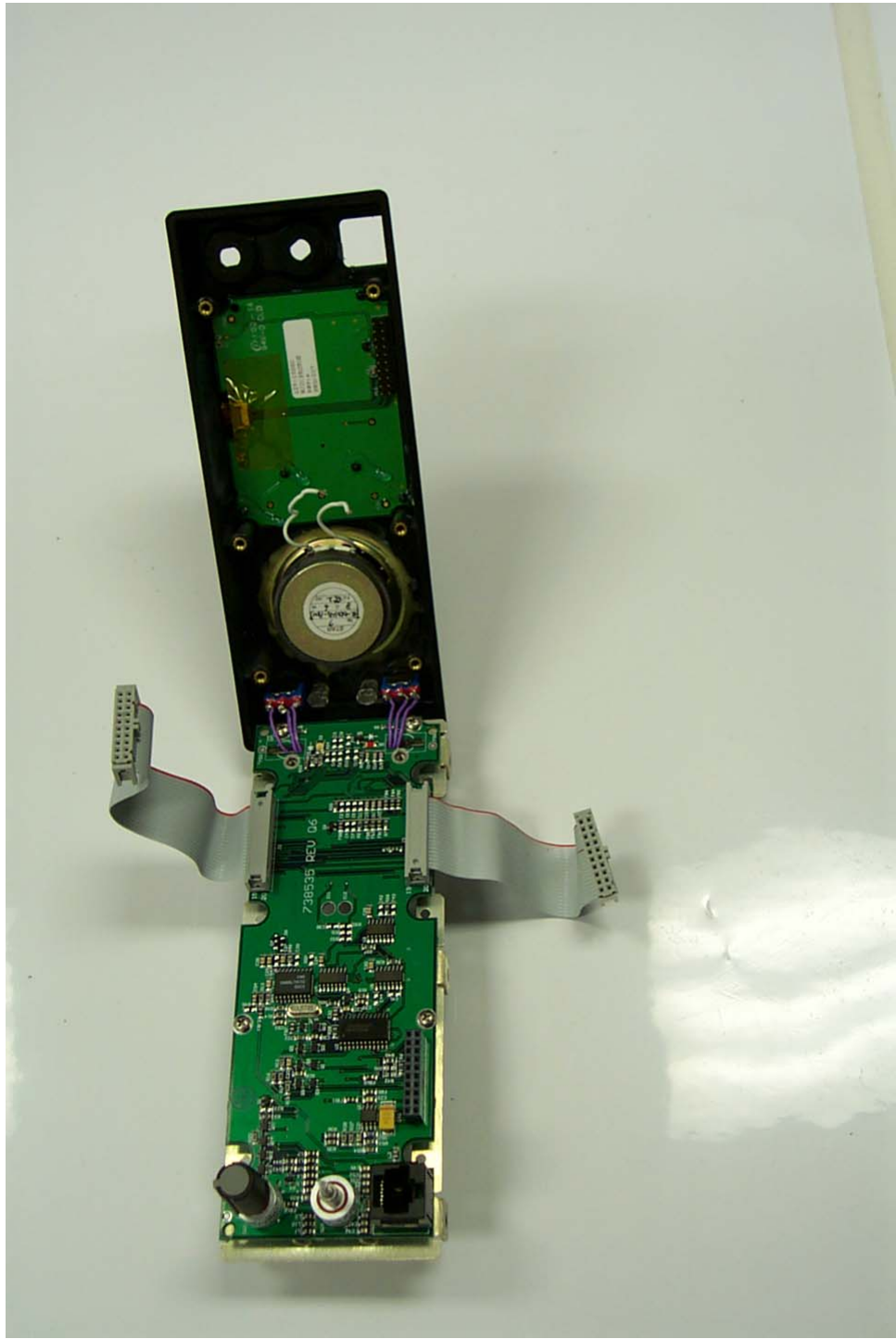
AOA













CP102-01  
94V-0 CLM

M68702H  
005 AE JAPAN

M68702H  
005 AE JAPAN

ASSY: 125-50110 REV:   
DWC PCR: 738536 REV: 01

942614 01

