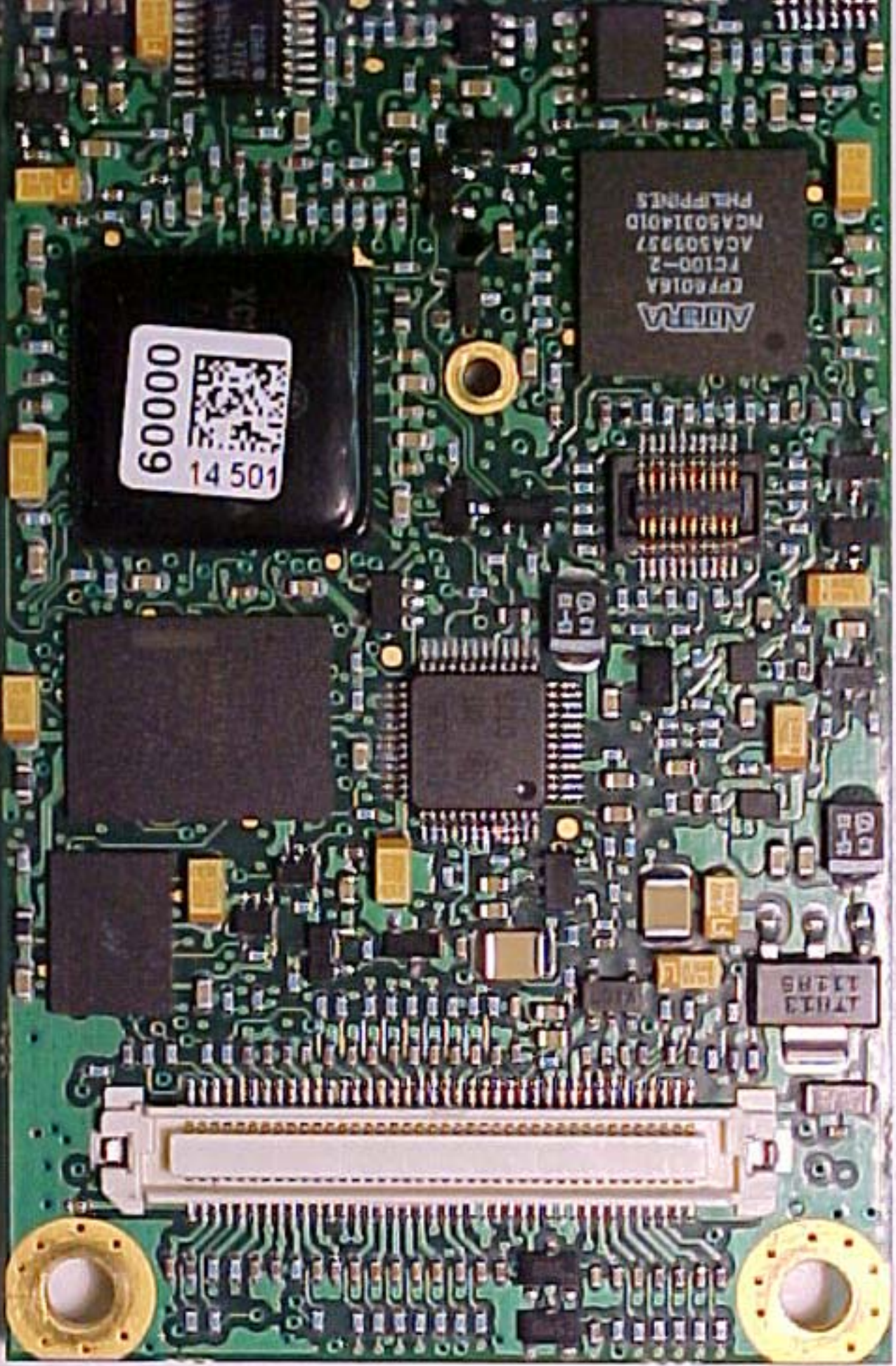


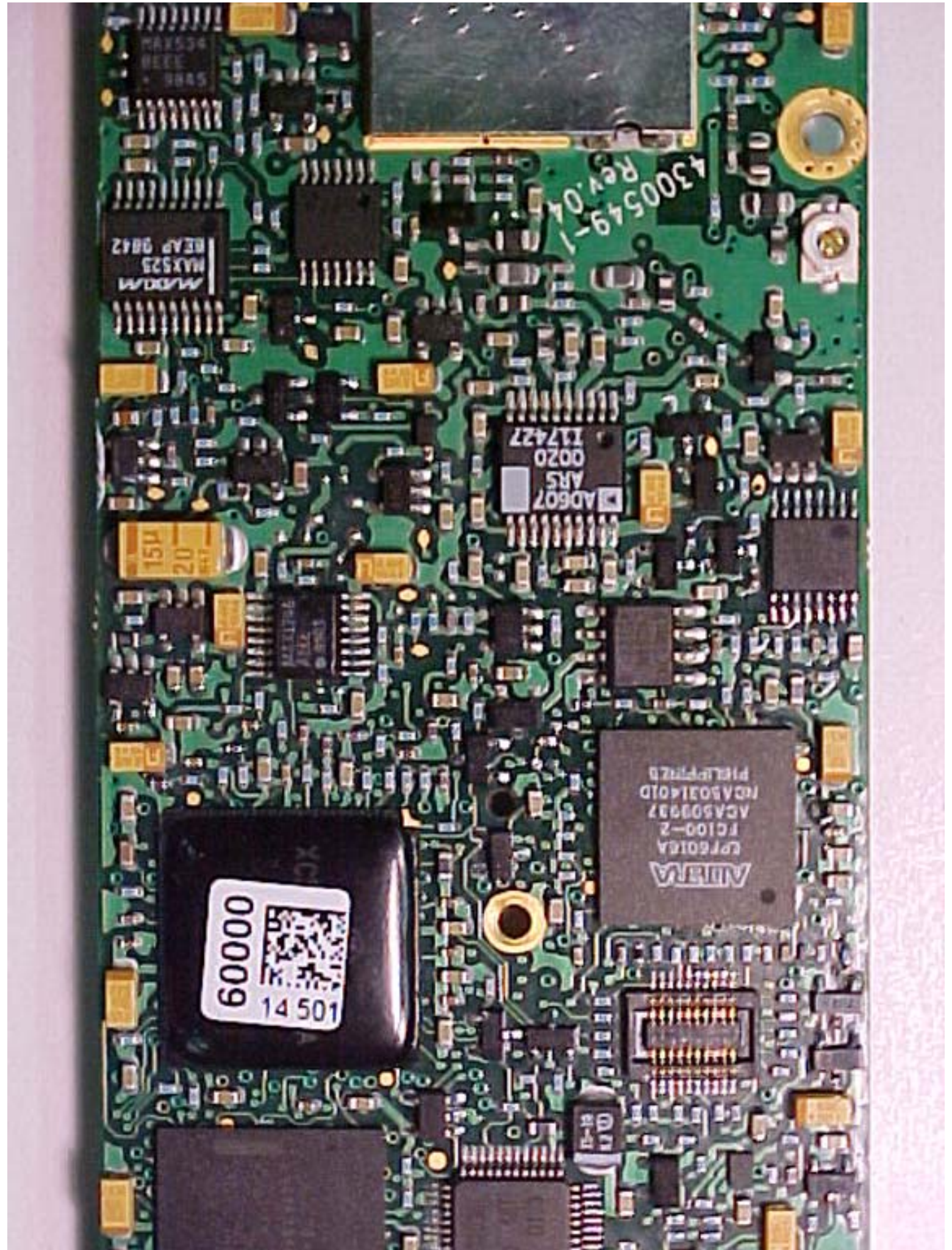
60000
14 501

ABRMA
EPT6016A
FC100-2
ACA509957
NCA50314010
PHILIPPINES

TY113
13485

GR
18





MAX534
RECE
3333
3345

MAX523
REAR 9842
MAX523

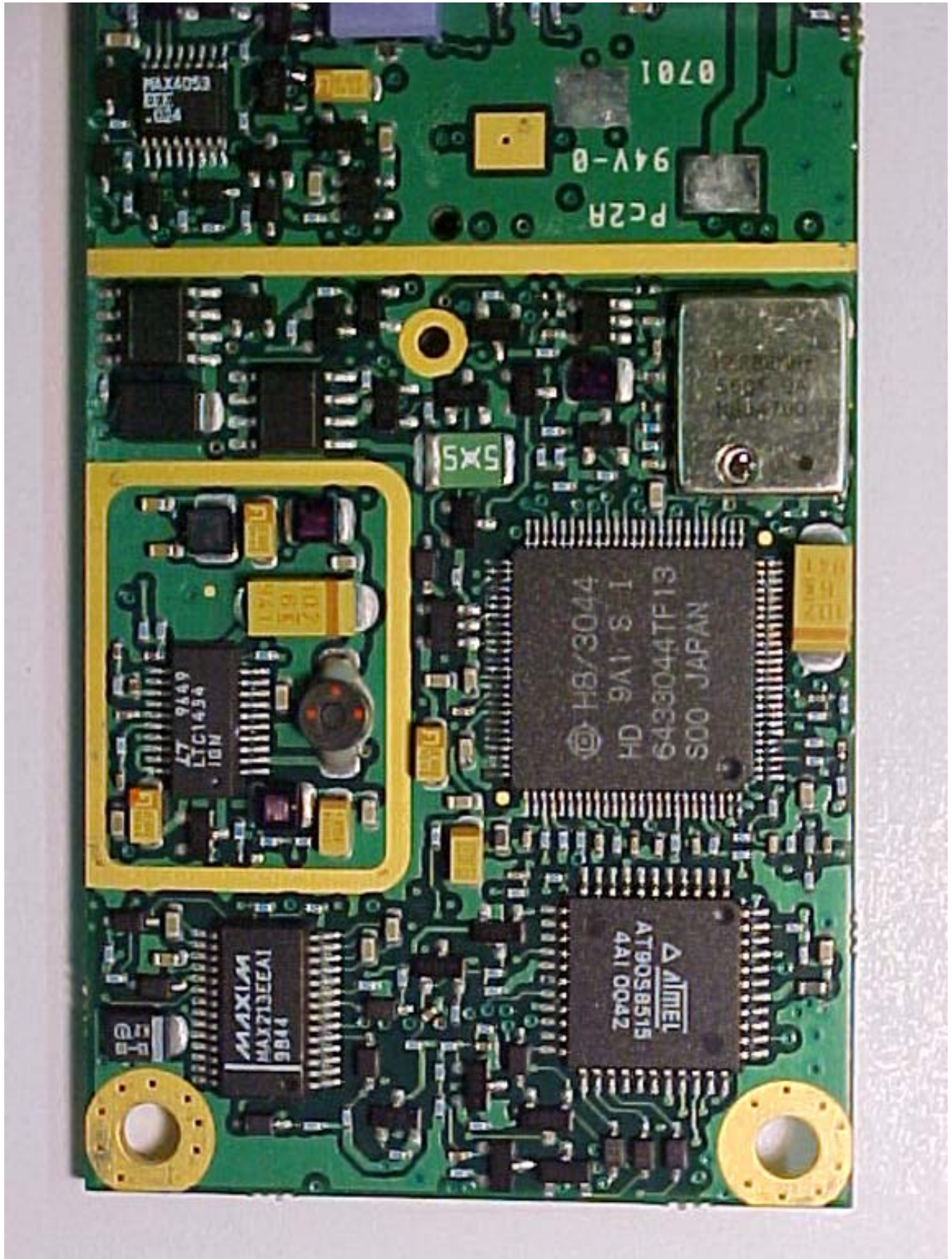
AD607
AR5
Q020
I17427

151A
20

60000
14 501

ADDA
FC100-2
ACAS09937
NDA5031401D
PHLPP12B

43005491
Rev. 0.1



PC2R
94V-0
0701

MAX44053
EXT.
COP.

SXS

47 9A49
LTC1454
10N

H8/3044
HD 9A1 S I
6433044TF13
S00 JAPAN

ALMEL
AT90S8515
4A1 0042

MAXIM
MAX213EEAI
98A4

GP

455SC20BA
W 95

3
E J

4
C

RAKON
V702211-2
12.000LH2
0101

0701

PC2R
94V-0

559XV405

007407M
1A 10A5
12.882M7E

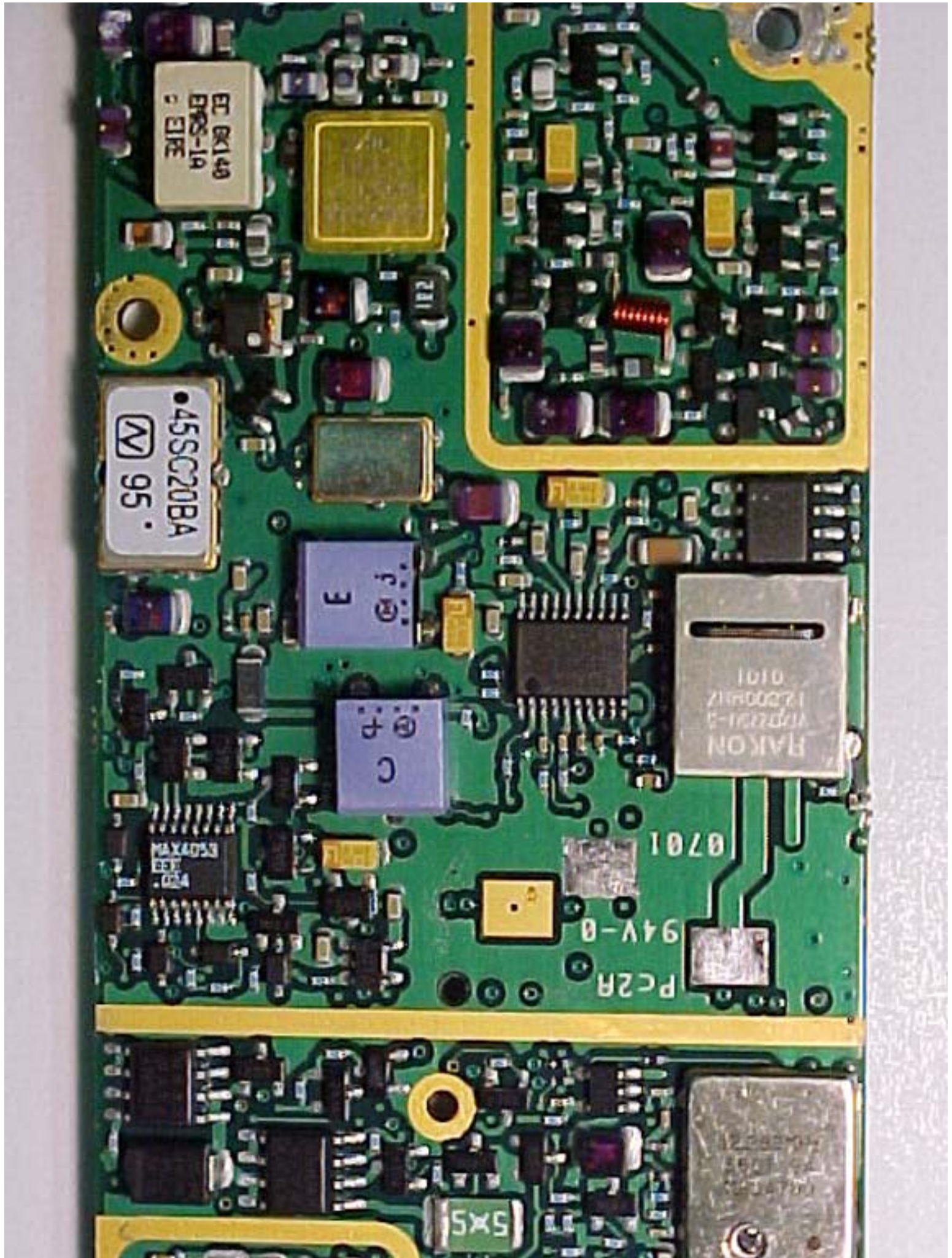
5X5

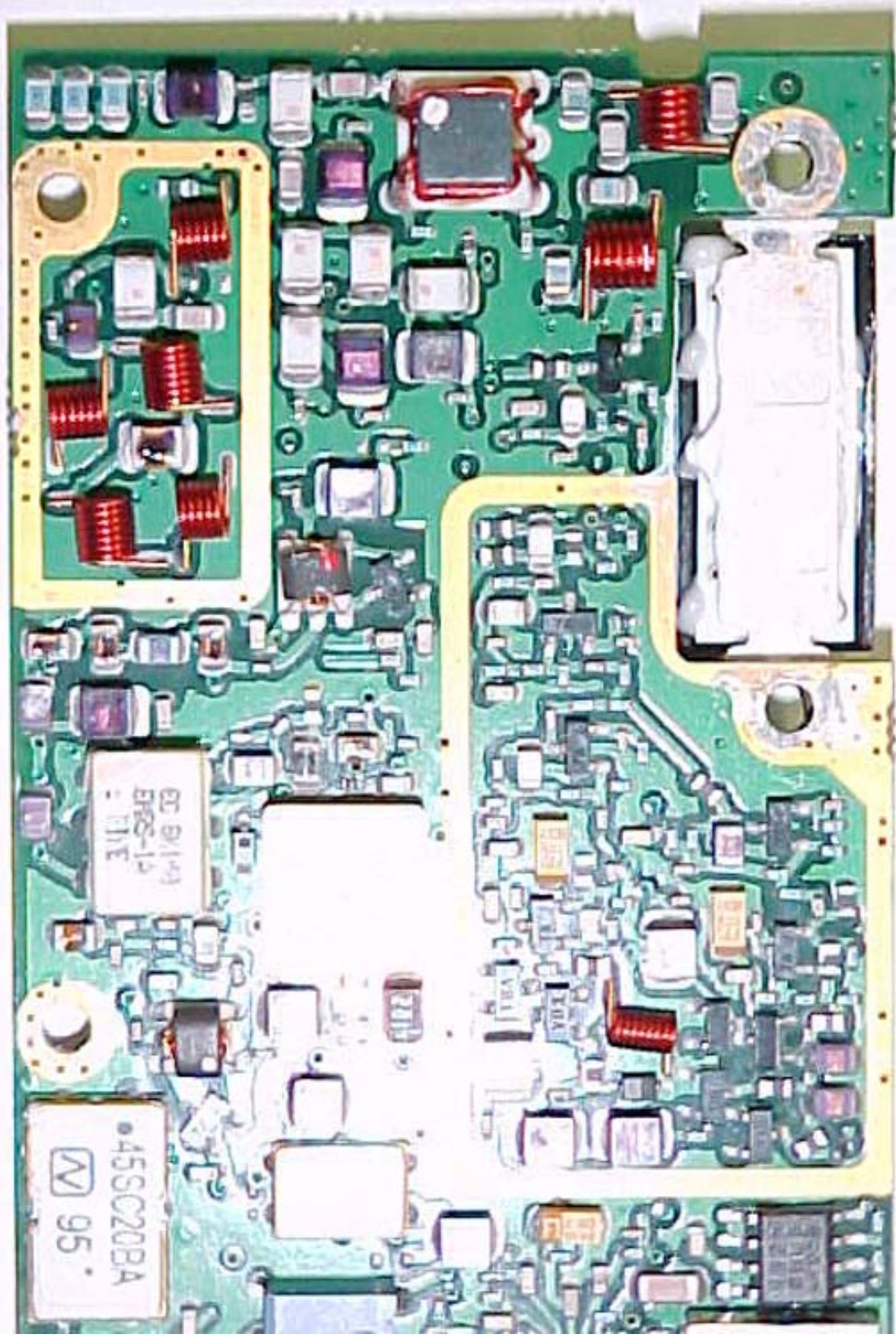
HB/3044
HD 9A1 S I
6433044TF13
S00 JAPAN

67 9849
G1434
10N

102
100
200

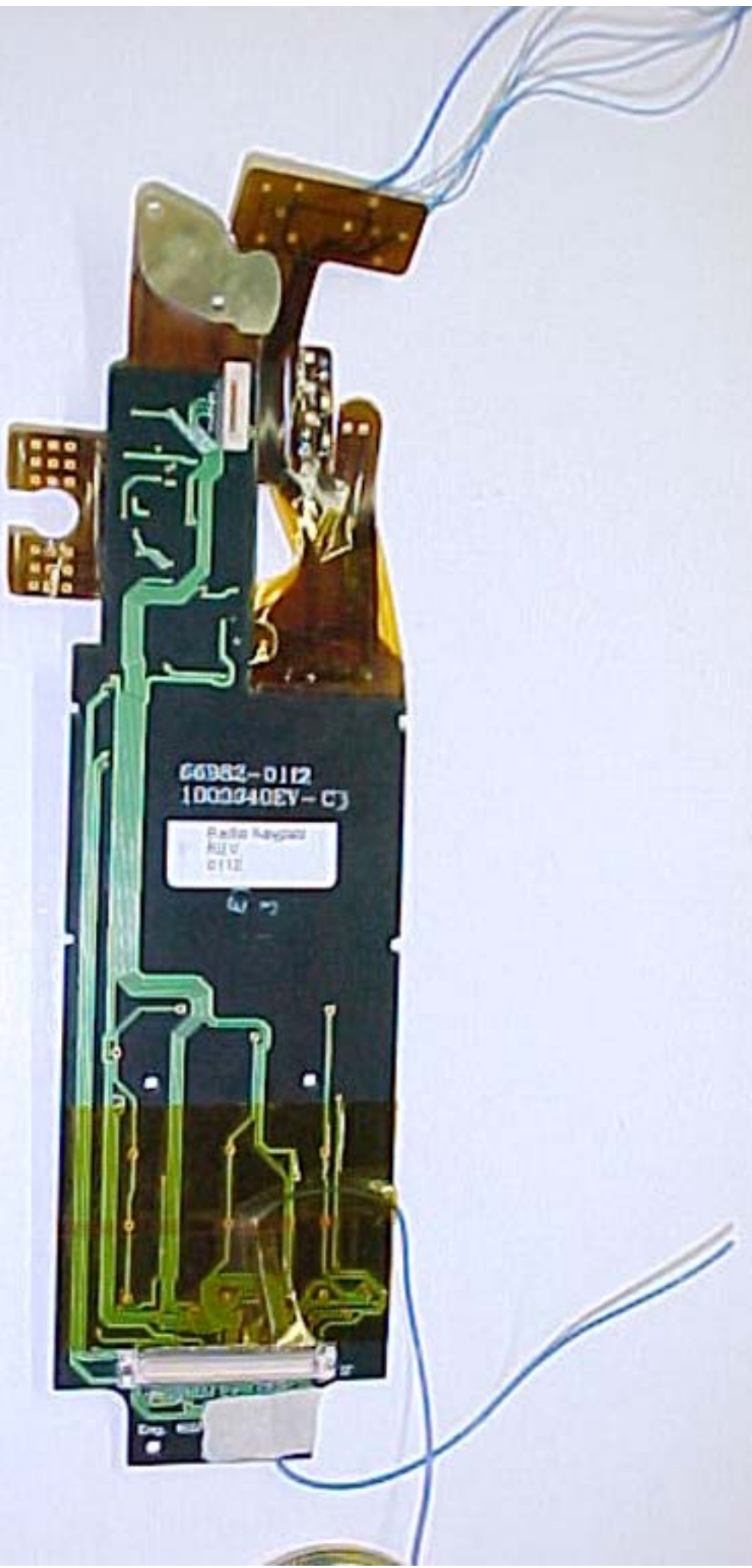
102
100
200

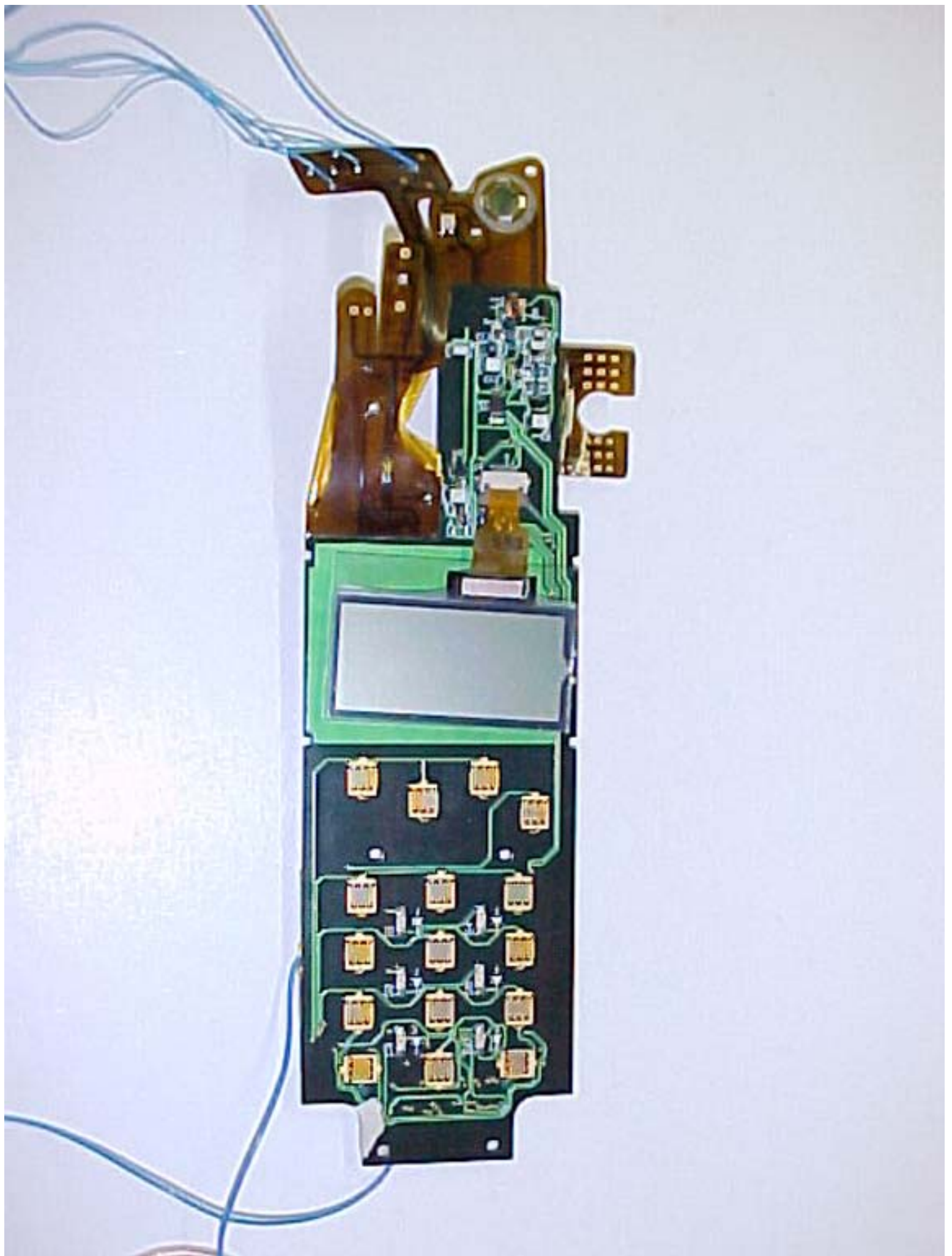


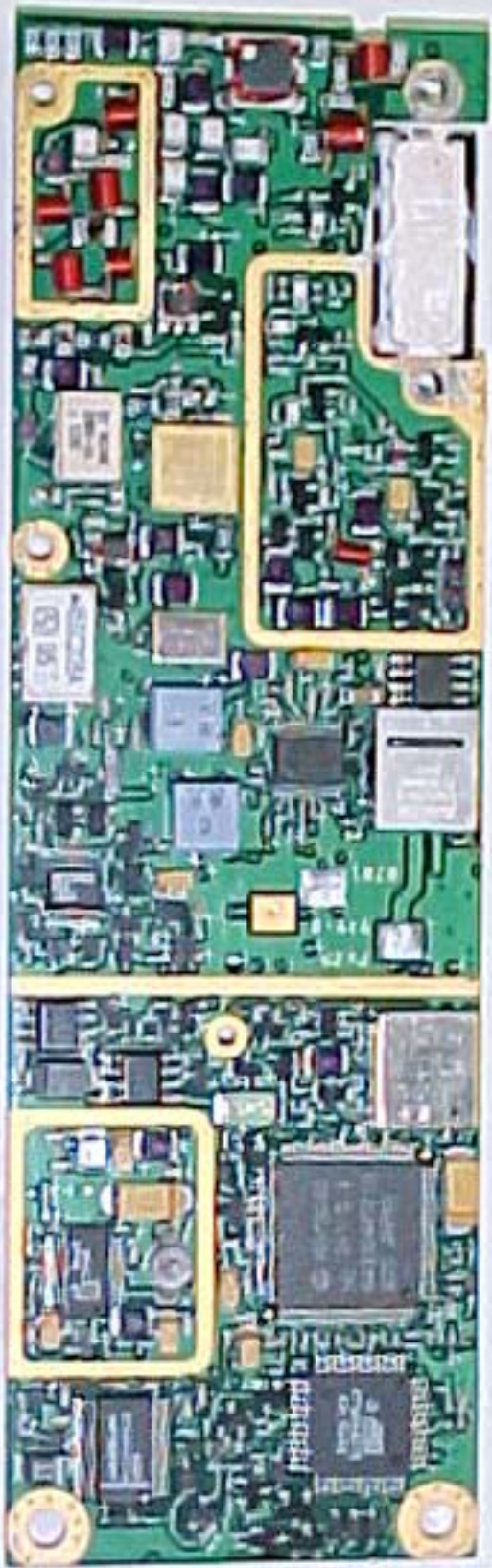


455C20BA
N 95

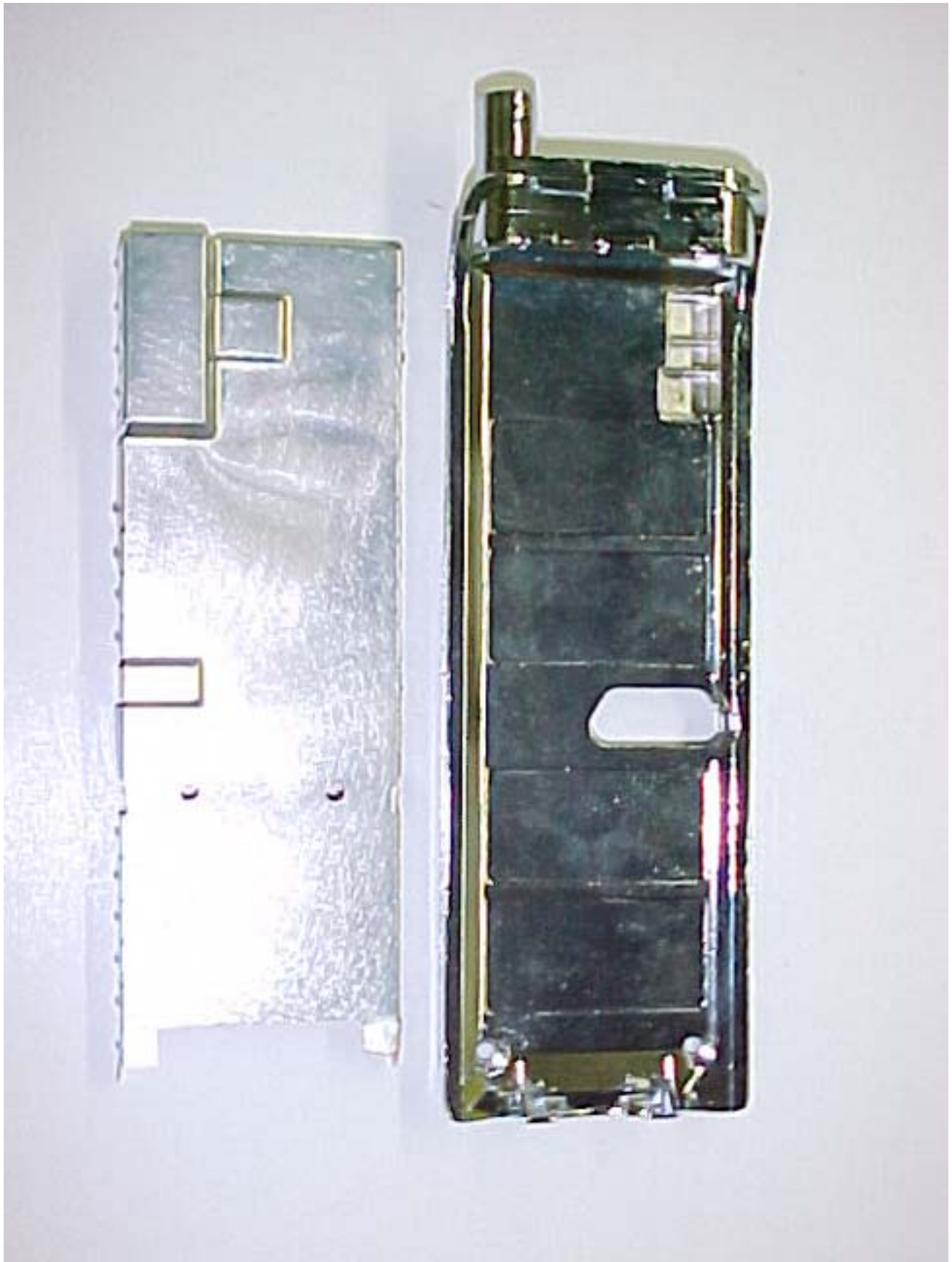
ET 8/149
DPCS-14
11/1/83



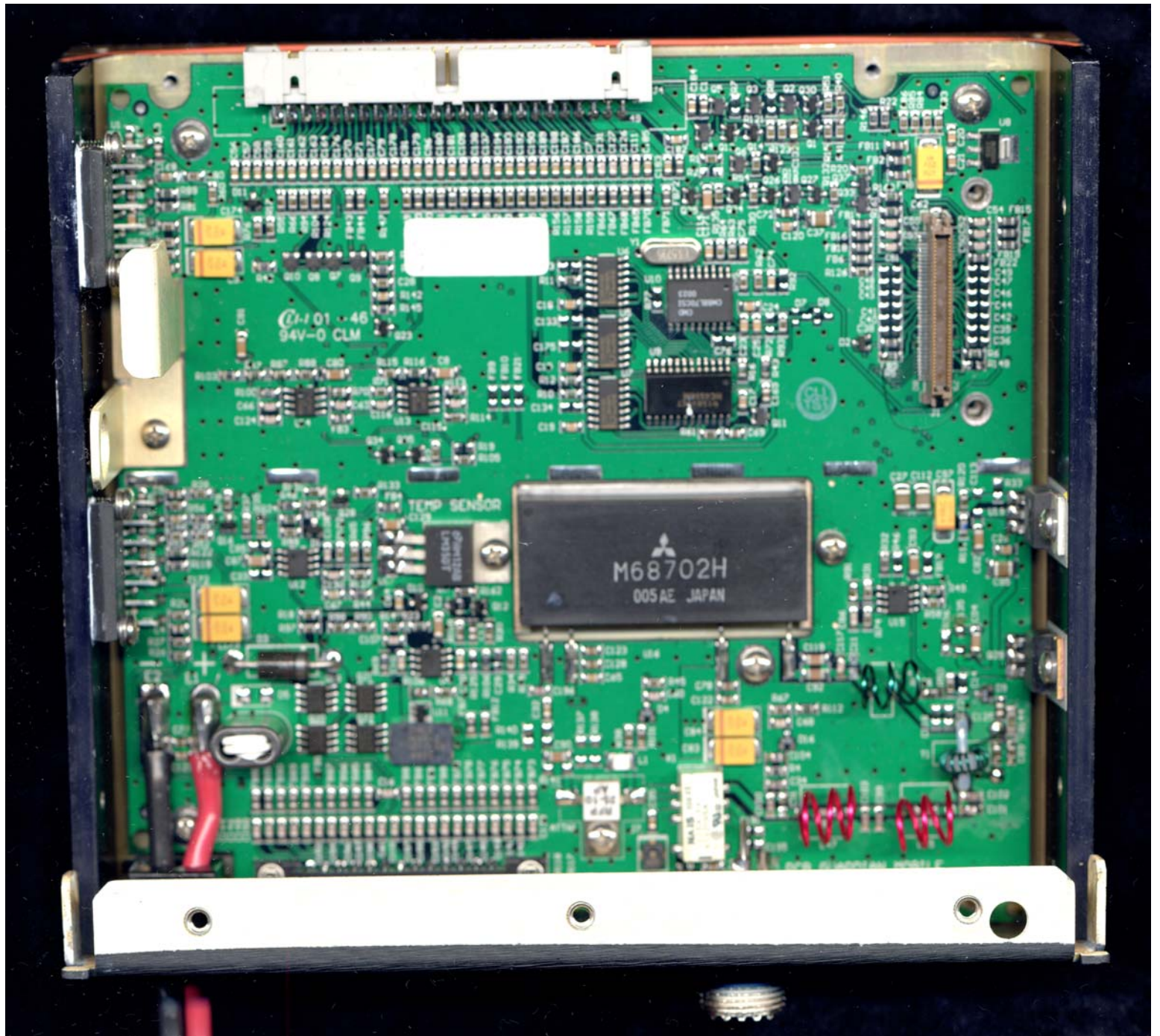








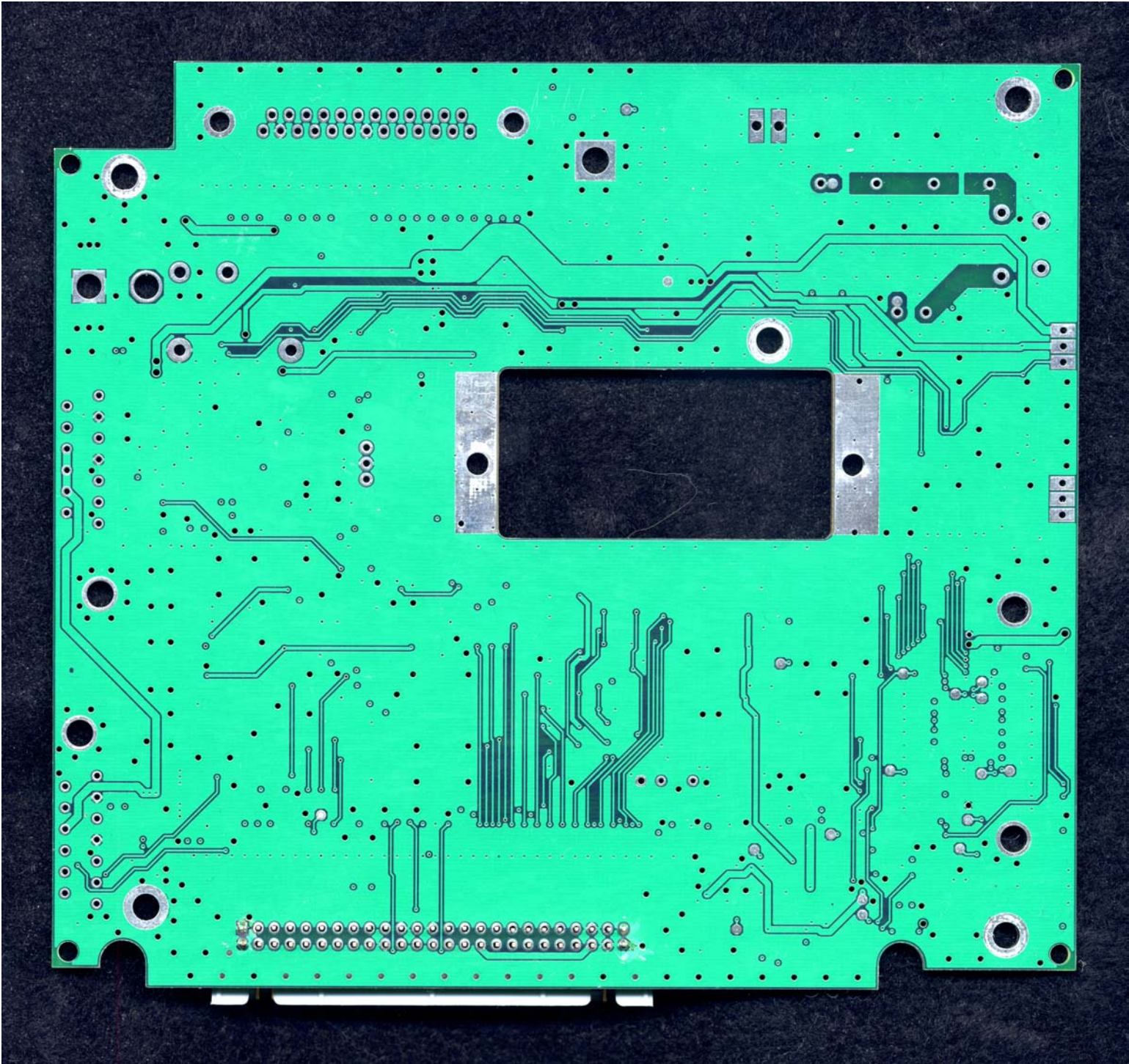


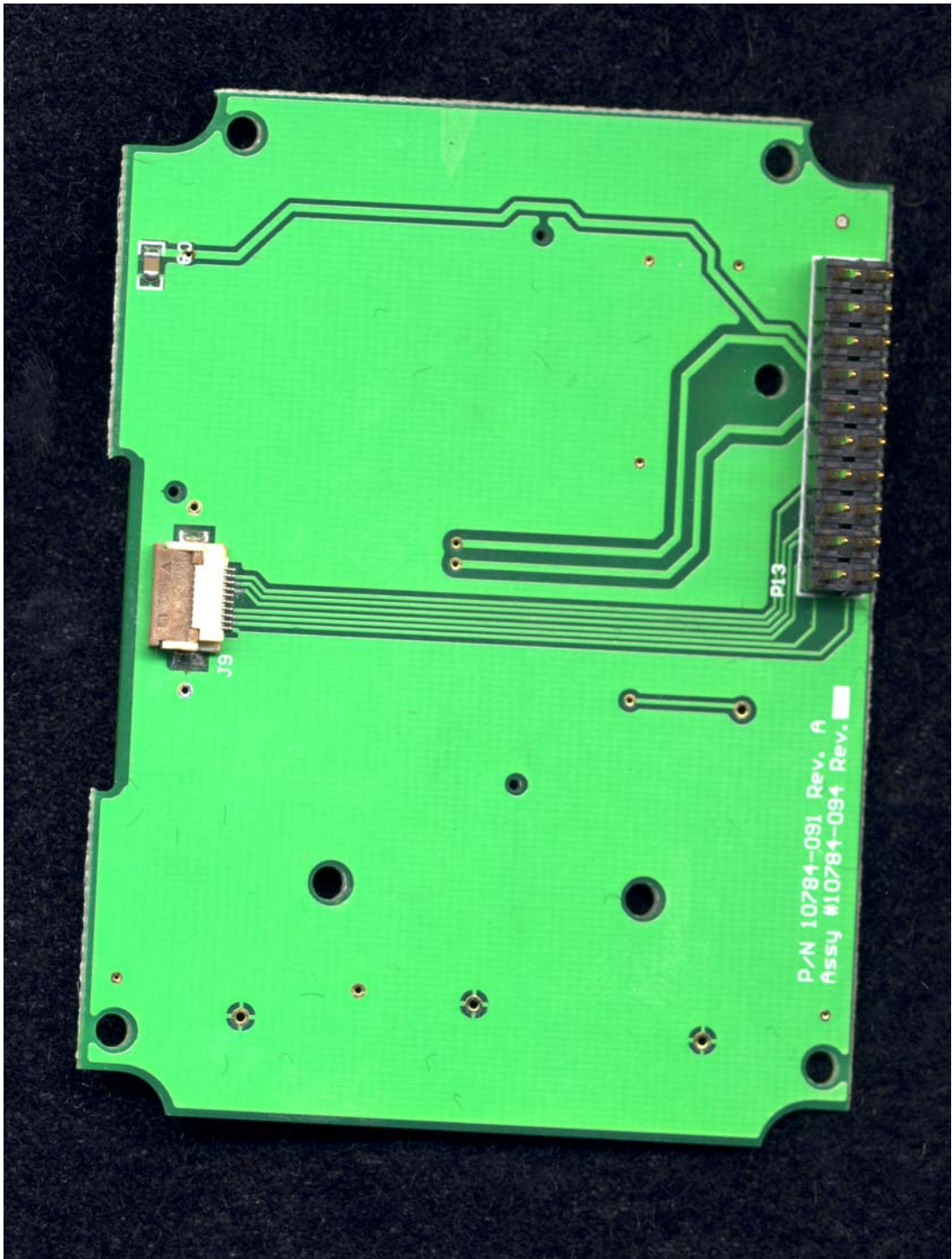


0101-46
94V-0 CLM

M68702H
005 AE JAPAN

TEMP SENSOR



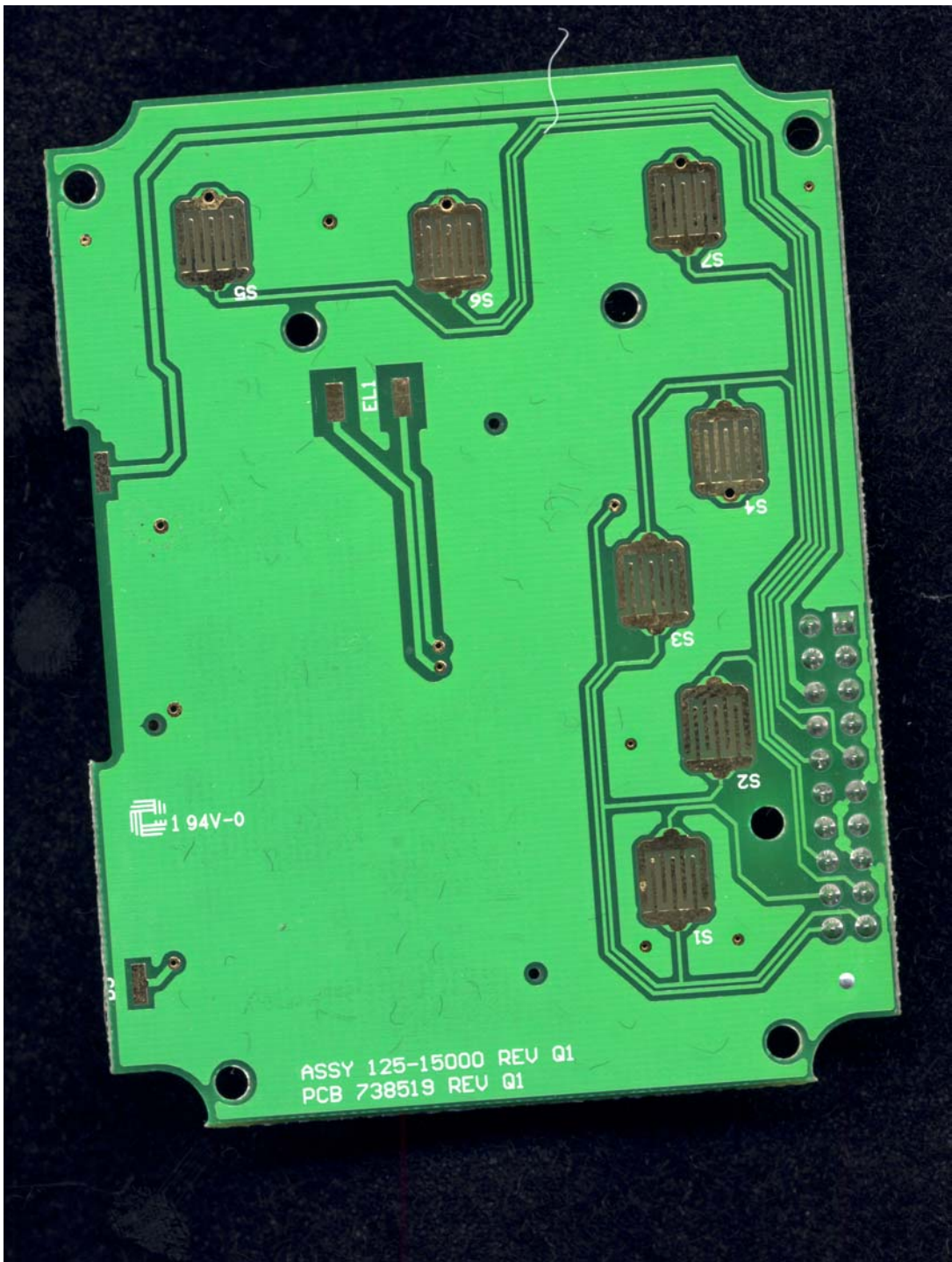


P/N 10784-091 Rev. A
Assy #10784-094 Rev.

JS

P13

C2



1 94V-0

ASSY 125-15000 REV Q1
PCB 738519 REV Q1

