

brother



RD ROLLS

RuggedJet

# RJ-4250WB/4230B

## Product Safety Guide(English)

Be sure to read this document before using your printer. We recommend that you keep this document nearby for future reference.

- For servicing, adjustments or repairs, contact Brother customer service or your local Brother dealer.
- If your printer operates abnormally or any dysfunction occurs, turn off your printer and disconnect each cord and contact contact Brother customer service or your local Brother dealer.
- The information provided in this document is subject to change without notice.
- Unauthorized duplication or reproduction of any or all content of this document is prohibited.
- Please note that we cannot assume any responsibility for any damage or lost profit arising from the use of the label created with this printer or the disappearance or change of data due to failure, repair or consumables using battery, or any claim from a third party.

**! DANGER** Failure to observe instructions and warnings will result in death or serious injuries. Follow these guidelines to avoid the risk of heat generation, smoking, explosion, or fire.

### Rechargeable Li-ion Battery

- Do not allow the battery to come into contact with liquids.
- Do not charge, use, or leave the battery in high temperature (above 60 °C /140 °F) locations.
- Do not attempt to charge the battery using an unsupported charger.
- Use only for its intended purpose.
- Keep away from heat and fire.
- Do not connect the + and - terminals with metal objects such as wire. Do not carry or store the battery with metal objects.
- Do not throw, hit or damage the battery in any way.
- Do not solder any connections to the battery.
- Do not disassemble or modify the battery.
- Do not dispose of the battery with household waste.

**! WARNING** Failure to observe instructions and warnings could result in death or serious injuries. Follow these guidelines to avoid the risk of heat generation, smoking, explosion, fire, or injury.

### Printer, AC Adapter(Optional), or Car Adapter(Optional)

- When foreign objects are inserted into your printer or its connectors and ports, stop using the printer and turn off the power. Then disconnect each cable or remove the battery .
- Do not use, charge and store the products in any of the following places.
  - Place where liquids come into contact.
  - Place where there are much dust.
  - Place whose temperature is extremely high.
  - During a thunderstorm.
  - Place where condensation forms.
- Do not disassemble or alter.
- Do not pour chemicals and combustible sprays over the products.

- Use and store the printer, other components, and packing bags out of the reach of children.
- Remove the battery or disconnect the cord when shipping.
- If the printer is not in use for long periods, remove the battery or disconnect the cord before storing.

### Rechargeable Li-ion Battery

- Keep away from infants. If ingested, contact emergency services immediately.
- Stop using the battery if there are noticeable abnormalities such as smell, heat, deformities, or discoloration.
- If liquid from the battery gets into eyes, wash them immediately with clean water. Contact emergency services immediately.

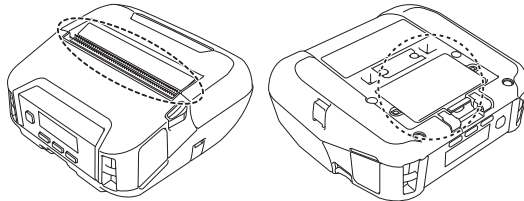
### AC adapter, Car adapter

- Use specified product.
- Insert the plug firmly into the socket.
- Use the AC adapter with household outlet(AC 100-240 V 50/60Hz) and Car adapter with DC 12 V.
- Do not allow metal objects to come into contact with connectors and ports.
- Do not pull on the cord when disconnecting the AC adapter cord or Car adapter from the electrical outlet. Hold the plug and pull it out of the electrical socket.
- Do not damage, twist, severely bend, pull on, place objects on, bind the AC adapter and Car adapter.
- Do not allow the AC adapter and Car adapter to be pinched.
- Do not overload electrical outlets.

**! CAUTION** Failure to observe instructions and warnings could result in minor or moderate injuries. Follow these guidelines to avoid injury.

### Printer

- Do not hold your printer by the RD Roll compartment cover or the roll guide. There is a risk that the cover could detach or your printer could fall.
- When connecting cables and accessories, follow each procedures of the products.
- Do not touch the print head and metal parts surrounding the head.
- If your printer is used for a long periods of time, the parts of the printer shown may get hot enough to cause low temperature burn.



### Rechargeable Li-ion Battery

- If liquid from the battery gets onto skin or clothes, immediately rinse with water.

### AC adapter, Car adapter

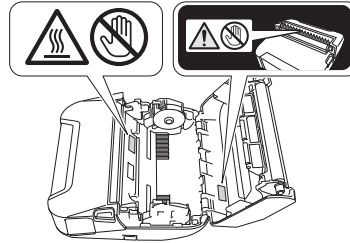
- Make sure you can always access the cord of the adapter so that you can disconnect it immediately in the event of an emergency.

### Belt clip

- Make sure that the belt clip is attached securely to your printer and the wearer's belt.

### Warning label

- Do not touch the blade and print head.



## General Precautions

### Printer, AC adapter, Car adapter, or Accessories

- Observe all applicable regulations when disposing of these products.

## Regulation

### ATTENTION: (USA and Canada)

The product you have purchased is powered by Lithium Ion battery which is recyclable. At the end of its useful life, under various state and local laws, it is illegal to dispose of this battery into your municipal waste stream.

Please call 1-800-8-BATTERY for information on how to recycle this battery.



### CAUTION(USA)

RISK OF EXPLOSION IF BATTERY IS REPLACED WITH AN INCORRECT TYPE. DISPOSE OF USED BATTERIES ACCORDING TO THE INSTRUCTIONS.

### Federal Communications Commission (FCC) (USA)

This equipment has been tested and found to comply with the limits for a Class B digital device, pursuant to Part 15 of the FCC Rules. These limits are designed to provide reasonable protection against harmful interference in a residential installation. This equipment generates, uses, and can radiate radio frequency energy and, if not installed and used in accordance with the instructions, may cause harmful interference to radio communications. However, there is no guarantee that interference will not occur in a particular installation. If this equipment does cause harmful interference to radio or television reception, which can be determined by turning the equipment off and on, the user is encouraged to try to correct the interference by one or more of the following measures:

- Reorient or relocate the receiving antenna.
- Increase the separation between the equipment and receiver.
- Connect the equipment into an outlet on a circuit different from that to which the receiver is connected.
- Consult the dealer or an experienced radio/TV technician for help.

This transmitter must not be co-located or operated in conjunction with any other antenna or transmitter.

### Important

- Changes or modifications not expressly approved by Brother Industries, Ltd. could void the user's authority to operate the equipment.

### Federal Communications Commission (FCC)

### Supplier's Declaration of Conformity (USA)

Responsible Party: Brother Mobile Solutions, Inc.

11030 Circle Point Road, Suite 100  
Westminster, CO 80020, U.S.A.

Tel: (303) 460-1600

declares, that the products

Product Name: Brother Thermal Printer

Model Number: RJ-4250WB/4230B

comply with Part 15 of the FCC Rules. Operation is subject to the following two conditions: (1) this device may not cause harmful interference, and (2) this device must accept any interference received, including interference that may cause undesired operation.

### Compliance with FCC requirement 15.407(c) (RJ-4250WB USA)

Data transmission is always initiated by software, which is the passed down through the MAC, through the digital and analog baseband, and finally to the RF chip. Several special packets are initiated by the MAC. These are the only ways the digital baseband portion will turn on the RF transmitter, which it then turns off at the end of the packet. Therefore, the transmitter will be on only while one of the aforementioned packets is being transmitted. In other words, this device automatically discontinue transmission in case of either absence of information to transmit or operational failure.

### Frequency Tolerance (RJ-4250WB USA): ±20 ppm

### RF Exposure Notice (RJ-4230B USA)

This equipment complies with FCC radiation exposure limits set forth for an uncontrolled environment and meets the FCC radio frequency (RF) Exposure Guidelines. This equipment has very low levels of RF energy that are deemed to comply without testing of specific absorption rate (SAR).

### RF Exposure Notice (RJ-4250WB USA and RJ-4250WB/4230B Canada)

The available scientific evidence does not show that any health problems are associated with using low power wireless devices. There is no proof, however, that these low power wireless devices are absolutely safe. Low power Wireless devices emit low levels of radio frequency energy (RF) in the microwave range while being used. Whereas high levels of RF can produce health effects (by heating tissue), exposure of low-level RF that does not produce heating effects causes no known adverse health effects. Many studies of low-level RF exposures have not found any biological effects. Some studies have suggested that some biological effects might occur, but such findings have not been confirmed by additional research. RJ-4250WB/4230B have been tested and found to comply with FCC/IC radiation exposure limits set forth for an uncontrolled environment and meets the FCC radio frequency (RF) Exposure Guidelines and RSS-102 of the IC radio frequency (RF) Exposure rules.

### Industry Canada Compliance Statement(Canada)

This device complies with Industry Canada's licence-exempt RSSs.

Operation is subject to the following two conditions:

- (1) This device may not cause interference; and
- (2) This device must accept any interference, including interference that may cause undesired operation of the device.

(RJ-4250WB Canada) For indoor use only (5150-5250 MHz).

### Open Source Licensing Remarks

This product includes open source software.

To see the Open Source Licensing Remarks, go to your model's Manuals page on the Brother Solutions Center at support.brother.com.