


# SAR Test Report

**Report No.** : SF201118C03  
**Applicant** : Verifone, Inc.  
**Address** : 1400 West Stanford Ranch Road Suite 200 Rocklin CA 95765 USA  
**Product** : Point of Sale Terminal  
**FCC ID** : B32V2104G  
**Brand** : Verifone  
**Model No.** : V210 4G  
**Standards** : FCC 47 CFR Part 2 (2.1093), IEEE C95.1:1992, IEEE Std 1528:2013  
KDB 865664 D01 v01r04, KDB 865664 D02 v01r02  
KDB 447498 D01 v06, KDB 941225 D01 v03r01, KDB 941225 D05 v02r05  
**Sample Received Date** : Nov. 18, 2020  
**Date of Testing** : Nov. 28, 2020 ~ Dec. 11, 2020  
**Lab Address** : No. 47-2, 14th Ling, Chia Pau Vil., Lin Kou Dist., New Taipei City, Taiwan  
**Test Location** : No. 19, Hwa Ya 2nd Rd., Wen Hwa Vil., Kwei Shan Dist., Taoyuan City, Taiwan

**CERTIFICATION:** The above equipment have been tested by **Bureau Veritas Consumer Products Services (H.K.) Ltd., Taoyuan Branch–Lin Kou Laboratories**, and found compliance with the requirement of the above standards. The test record, data evaluation & Equipment Under Test (EUT) configurations represented herein are true and accurate accounts of the measurements of the sample's SAR characteristics under the conditions specified in this report. It should not be reproduced except in full, without the written approval of our laboratory. The client should not use it to claim product certification, approval, or endorsement by TAF or any government agencies.

Prepared By :



Shelly Hsueh / Specialist

Approved By :



Gordon Lin / Manager



FCC Accredited No.: TW0003

This report is for your exclusive use. Any copying or replication of this report to or for any other person or entity, or use of our name or trademark, is permitted only with our prior written permission. This report sets forth our findings solely with respect to the test samples identified herein. The results set forth in this report are not indicative or representative of the quality or characteristics of the lot from which a test sample was taken or any similar or identical product unless specifically and expressly noted. Our report includes all of the tests requested by you and the results thereof based upon the information that you provided to us. You have 60 days from date of issuance of this report to notify us of any material error or omission caused by our negligence, provided, however, that such notice shall be in writing and shall specifically address the issue you wish to raise. A failure to raise such issue within the prescribed time shall constitute your unqualified acceptance of the completeness of this report, the tests conducted and the correctness of the report contents. Unless specific mention, the uncertainty of measurement has been explicitly taken into account to declare the compliance or non-compliance to the specification.

## Table of Contents

<b>Release Control Record .....</b>	<b>3</b>
<b>1. Summary of Maximum SAR Value .....</b>	<b>4</b>
<b>2. Description of Equipment Under Test .....</b>	<b>5</b>
<b>3. SAR Measurement System .....</b>	<b>6</b>
3.1 Definition of Specific Absorption Rate (SAR) .....	6
3.2 SPEAG DASY6 System .....	6
3.2.1 Robot .....	7
3.2.2 Probes .....	8
3.2.3 Data Acquisition Electronics (DAE) .....	8
3.2.4 Phantoms .....	8
3.2.5 Device Holder .....	9
3.2.6 System Validation Dipoles .....	10
3.2.7 Power Source .....	10
3.2.8 Tissue Simulating Liquids .....	11
3.3 SAR System Verification .....	13
3.4 SAR Measurement Procedure .....	14
3.4.1 Area Scan and Zoom Scan Procedure .....	14
3.4.2 Volume Scan Procedure .....	15
3.4.3 Power Drift Monitoring .....	16
3.4.4 Spatial Peak SAR Evaluation .....	16
3.4.5 SAR Averaged Methods .....	16
<b>4. SAR Measurement Evaluation .....</b>	<b>17</b>
4.1 EUT Configuration and Setting .....	17
4.2 EUT Testing Position .....	23
4.2.1 Extremity Exposure Conditions .....	23
4.3 Tissue Verification .....	23
4.4 System Validation .....	24
4.5 System Verification .....	24
4.6 Maximum Output Power .....	24
4.6.1 Maximum Target Conducted Power .....	24
4.6.2 Measured Conducted Power Result .....	24
4.7 SAR Testing Results .....	25
4.7.1 SAR Test Reduction Considerations .....	25
4.7.2 SAR Results for Extremity Exposure Condition (Test Separation Distance is 0 mm) .....	26
4.7.3 SAR Measurement Variability .....	31
4.7.4 Simultaneous Multi-band Transmission Evaluation .....	32
<b>5. Calibration of Test Equipment .....</b>	<b>33</b>
<b>6. Measurement Uncertainty .....</b>	<b>34</b>
<b>7. Information of the Testing Laboratories .....</b>	<b>35</b>
<b>Appendix A. SAR Plots of System Verification</b>	
<b>Appendix B. SAR Plots of SAR Measurement</b>	
<b>Appendix C. Calibration Certificate for Probe and Dipole</b>	
<b>Appendix D. Photographs of EUT and Setup</b>	
<b>Appendix E. Maximum Target Conducted Power</b>	
<b>Appendix F. Measured Conducted Power Result</b>	
<b>Appendix G. Analysis of Simultaneous Transmission SAR</b>	

## Release Control Record

Report No.	Reason for Change	Date Issued
SF201118C03	Initial release	Jan. 13, 2021

**1. Summary of Maximum SAR Value**

Equipment Class	Mode	Highest SAR-10g Scaled Extremity (W/kg)
PCB	GSM850	0.41
	GSM1900	3.20
	WCDMA II	2.56
	WCDMA IV	3.57
	WCDMA V	0.32
	LTE 2	3.07
	LTE 4	2.43
	LTE 5	0.35
	LTE 7	3.58
	LTE 12	0.33
	LTE 13	0.29
	LTE 25	3.58
	LTE 26	0.39
	LTE 38	1.38
LTE 41	1.46	
DTS	2.4G WLAN	0.31
NII	5.3G WLAN	0.34
	5.6G WLAN	0.37
	5.8G WLAN	0.38
DSS	Bluetooth	0.00

Highest Simultaneous Transmission SAR	Highest SAR-10g Scaled Extremity (W/kg)
	3.96

**Note:**

- The SAR criteria (**Head & Body: SAR-1g 1.6 W/kg, and Extremity: SAR-10g 4.0 W/kg**) for general population/uncontrolled exposure is specified in FCC 47 CFR part 2 (2.1093) and ANSI/IEEE C95.1-1992.

**2. Description of Equipment Under Test**

<b>EUT Type</b>	Point of Sale Terminal
<b>FCC ID</b>	B32V2104G
<b>Brand Name</b>	Verifone
<b>Model Name</b>	V210 4G
<b>Tx Frequency Bands (Unit: MHz)</b>	GSM850 : 824.2 ~ 848.8 GSM1900 : 1850.2 ~ 1909.8 WCDMA Band II : 1852.4 ~ 1907.6 WCDMA Band IV : 1712.4 ~ 1752.6 WCDMA Band V : 826.4 ~ 846.6 LTE Band 2 : 1850.7 ~ 1909.3 (BW: 1.4M, 3M, 5M, 10M, 15M, 20M) LTE Band 4 : 1710.7 ~ 1754.3 (BW: 1.4M, 3M, 5M, 10M, 15M, 20M) LTE Band 5 : 824.7 ~ 848.3 (BW: 1.4M, 3M, 5M, 10M) LTE Band 7 : 2502.5 ~ 2567.5 (BW: 5M, 10M, 15M, 20M) LTE Band 12 : 699.7 ~ 715.3 (BW: 1.4M, 3M, 5M, 10M) LTE Band 13 : 799.5 ~ 784.5 (BW: 5M, 10M) LTE Band 25 : 1850.7 ~ 1914.3 (BW: 1.4M, 3M, 5M, 10M, 15M, 20M) LTE Band 26 : 814.7 ~ 848.3 (BW: 1.4M, 3M, 5M, 10M, 15M) LTE Band 38 : 2572.5 ~ 2617.5 (BW: 5M, 10M, 15M, 20M) LTE Band 41 : 2502.5 ~ 2687.5 (BW: 5M, 10M, 15M, 20M) WLAN : 2412 ~ 2462, 5180 ~ 5240, 5260 ~ 5320, 5500 ~ 5700, 5745 ~ 5825 Bluetooth : 2402 ~ 2480 NFC : 13.56
<b>Uplink Modulations</b>	GSM & GPRS : GMSK EDGE : 8PSK WCDMA : QPSK LTE : QPSK, 16QAM 802.11b : DSSS 802.11a/g/n/ac : OFDM Bluetooth : GFSK, $\pi/4$ -DQPSK, 8-DPSK NFC : ASK
<b>Maximum Tune-up Conducted Power (Unit: dBm)</b>	Please refer to section 4.6.1 of this report
<b>Antenna Type</b>	WLAN is PIFA and WWAN is Dipole Peak Antenna Gain : -0.2 dBi for 2.4GHz, 3.4 dBi for 5GHz
<b>EUT Stage</b>	Identical Prototype

**Note:**

- The above EUT information is declared by manufacturer and for more detailed features description please refers to the manufacturer's specifications or User's Manual.

**List of Accessory:**

<b>Battery</b>	<b>Brand Name</b>	Verifone
	<b>Model Name</b>	BPK183-001
	<b>Power Rating</b>	3.7Vdc, 3100mAh
	<b>Type</b>	Li-ion

### **3. SAR Measurement System**

#### **3.1 Definition of Specific Absorption Rate (SAR)**

SAR is related to the rate at which energy is absorbed per unit mass in an object exposed to a radio field. The SAR distribution in a biological body is complicated and is usually carried out by experimental techniques or numerical modeling. The standard recommends limits for two tiers of groups, occupational/controlled and general population/uncontrolled, based on a person's awareness and ability to exercise control over his or her exposure. In general, occupational/controlled exposure limits are higher than the limits for general population/uncontrolled.

The SAR definition is the time derivative (rate) of the incremental energy (dW) absorbed by (dissipated in) an incremental mass (dm) contained in a volume element (dv) of a given density ( $\rho$ ). The equation description is as below:

$$\text{SAR} = \frac{d}{dt} \left( \frac{dW}{dm} \right) = \frac{d}{dt} \left( \frac{dW}{\rho dv} \right)$$

SAR is expressed in units of Watts per kilogram (W/kg)

SAR measurement can be related to the electrical field in the tissue by

$$\text{SAR} = \frac{\sigma |E|^2}{\rho}$$

Where:  $\sigma$  is the conductivity of the tissue,  $\rho$  is the mass density of the tissue and E is the RMS electrical field strength.

#### **3.2 SPEAG DASY6 System**

DASY6 system consists of high precision robot, probe alignment sensor, phantom, robot controller, controlled measurement server and near-field probe. The robot includes six axes that can move to the precision position of the DASY6 software defined. The DASY6 software can define the area that is detected by the probe. The robot is connected to controlled box. Controlled measurement server is connected to the controlled robot box. The DAE includes amplifier, signal multiplexing, AD converter, offset measurement and surface detection. It is connected to the Electro-optical coupler (ECO). The ECO performs the conversion from the optical into digital electric signal of the DAE and transfers data to the PC.

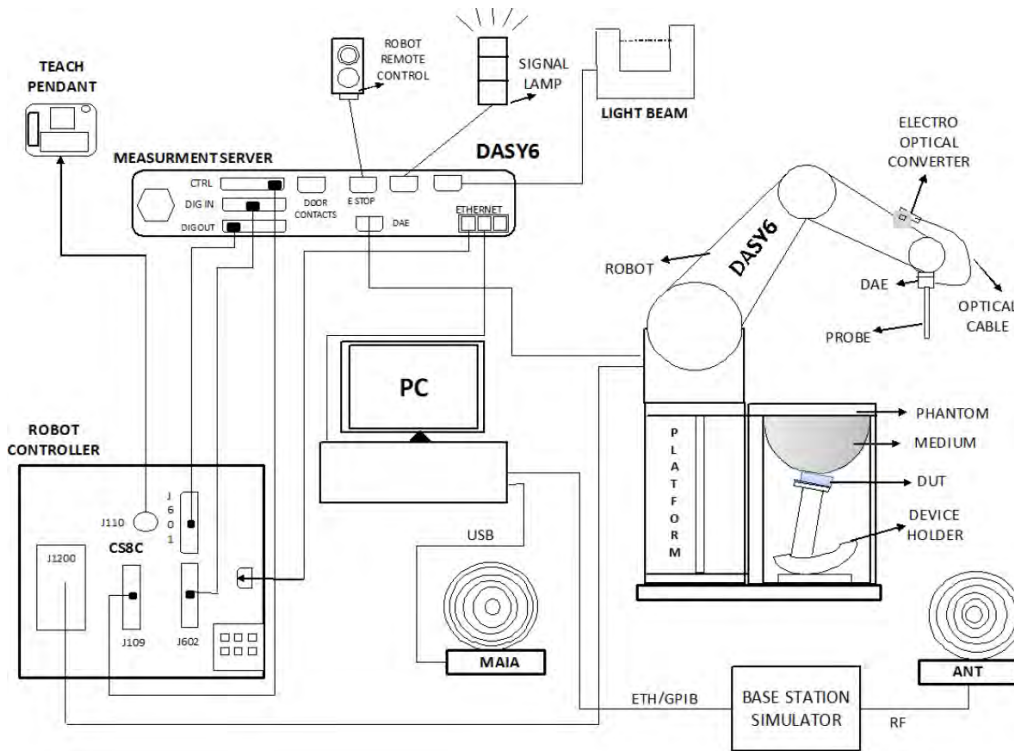


Fig-3.1 SPEAG DASY6 System Setup

### 3.2.1 Robot

The DASY6 systems use the high precision robots from Stäubli SA (France). For the 6-axis controller system, the robot controller version of CS8c from Stäubli is used. The Stäubli robot series have many features that are important for our application:

- High precision (repeatability  $\pm 0.035$  mm)
- High reliability (industrial design)
- Jerk-free straight movements
- Low ELF interference (the closed metallic construction shields against motor control fields)




Fig-3.2 SPEAG DASY6 System




## SAR Test Report

### 3.2.2 Probes


The SAR measurement is conducted with the dosimetric probe. The probe is specially designed and calibrated for use in liquid with high permittivity. The dosimetric probe has special calibration in liquid at different frequency.

<b>Model</b>	EX3DV4	
<b>Construction</b>	Symmetrical design with triangular core. Built-in shielding against static charges. PEEK enclosure material (resistant to organic solvents, e.g., DGBE).	
<b>Frequency</b>	4 MHz to 10 GHz Linearity: $\pm 0.2$ dB	
<b>Directivity</b>	$\pm 0.1$ dB in TSL (rotation around probe axis) $\pm 0.3$ dB in TSL (rotation normal to probe axis)	
<b>Dynamic Range</b>	10 $\mu$ W/g to 100 mW/g Linearity: $\pm 0.2$ dB (noise: typically $< 1$ $\mu$ W/g)	
<b>Dimensions</b>	Overall length: 337 mm (Tip: 20 mm) Tip diameter: 2.5 mm (Body: 12 mm) Typical distance from probe tip to dipole centers: 1 mm	

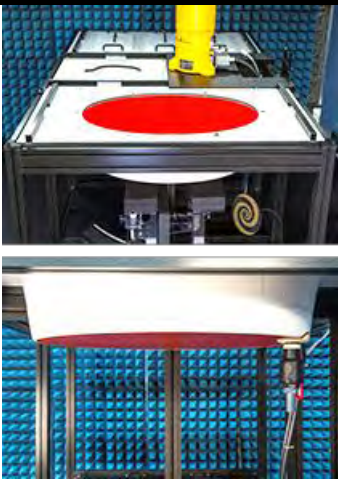
### 3.2.3 Data Acquisition Electronics (DAE)

<b>Model</b>	DAE3, DAE4	
<b>Construction</b>	Signal amplifier, multiplexer, A/D converter and control logic. Serial optical link for communication with DASY embedded system (fully remote controlled). Two step probe touch detector for mechanical surface detection and emergency robot stop.	
<b>Measurement Range</b>	-100 to +300 mV (16 bit resolution and two range settings: 4mV, 400mV)	
<b>Input Offset Voltage</b>	$< 5\mu$ V (with auto zero)	
<b>Input Bias Current</b>	$< 50$ fA	
<b>Dimensions</b>	60 x 60 x 68 mm	


### 3.2.4 Phantoms


<b>Model</b>	SAM-Twin Phantom	
<b>Construction</b>	The shell corresponds to the specifications of the Specific Anthropomorphic Mannequin (SAM) phantom defined in IEEE Std 1528 and IEC 62209-1. It enables the dosimetric evaluation of left and right hand phone usage as well as body-mounted usage at the flat phantom region. A cover prevents evaporation of the liquid. Reference markings on the phantom allow the complete setup of all predefined phantom positions and measurement grids by teaching three points with the robot.	
<b>Material</b>	Vinylester, fiberglass reinforced (VE-GF)	
<b>Shell Thickness</b>	$2 \pm 0.2$ mm ( $6 \pm 0.2$ mm at ear point)	
<b>Dimensions</b>	Length: 1000 mm Width: 500 mm Height: adjustable feet	
<b>Filling Volume</b>	approx. 25 liters	




<b>Model</b>	ELI	
<b>Construction</b>	The ELI phantom is used for compliance testing of handheld and body-mounted wireless devices. ELI is fully compatible with the IEC 62209-2 standard and all known tissue simulating liquids. ELI has been optimized regarding its performance and can be integrated into our standard phantom tables. A cover prevents evaporation of the liquid. Reference markings on the phantom allow installation of the complete setup, including all predefined phantom positions and measurement grids, by teaching three points. The phantom is compatible with all SPEAG dosimetric probes and dipoles.	
<b>Material</b>	Vinylester, fiberglass reinforced (VE-GF)	
<b>Shell Thickness</b>	2.0 ± 0.2 mm (bottom plate)	
<b>Dimensions</b>	Major axis: 600 mm Minor axis: 400 mm	
<b>Filling Volume</b>	approx. 30 liters	


### 3.2.5 Device Holder

<b>Model</b>	MD4HHTV5 - Mounting Device for Hand-Held Transmitters	
<b>Construction</b>	In combination with the Twin SAM or ELI phantoms, the Mounting Device for Hand-Held Transmitters enables rotation of the mounted transmitter device to specified spherical coordinates. At the heads, the rotation axis is at the ear opening. Transmitter devices can be easily and accurately positioned according to IEC 62209-1, IEEE 1528, FCC, or other specifications. The device holder can be locked for positioning at different phantom sections (left head, right head, flat).	
<b>Material</b>	Polyoxymethylene (POM)	


<b>Model</b>	MDA4WTV5 - Mounting Device Adaptor for Ultra Wide Transmitters	
<b>Construction</b>	An upgrade kit to Mounting Device to enable easy mounting of wider devices like big smart-phones, e-books, small tablets, etc. It holds devices with width up to 140 mm.	
<b>Material</b>	Polyoxymethylene (POM)	

<b>Model</b>	MDA4SPV6 - Mounting Device Adaptor for Smart Phones	
<b>Construction</b>	The solid low-density MDA4SPV6 adaptor assuring no impact on the DUT radiation performance and is conform with any DUT design and shape.	
<b>Material</b>	ROHACELL	


## SAR Test Report

<b>Model</b>	MD4LAPV5 - Mounting Device for Laptops and other Body-Worn Transmitters	
<b>Construction</b>	In combination with the Twin SAM or ELI phantoms, the Mounting Device (Body-Worn) enables testing of transmitter devices according to IEC 62209-2 specifications. The device holder can be locked for positioning at a flat phantom section.	
<b>Material</b>	Polyoxymethylene (POM), PET-G, Foam	

### 3.2.6 System Validation Dipoles

<b>Model</b>	D-Serial	
<b>Construction</b>	Symmetrical dipole with 1/4 balun. Enables measurement of feed point impedance with NWA. Matched for use near flat phantoms filled with tissue simulating solutions.	
<b>Frequency</b>	750 MHz to 5800 MHz	
<b>Return Loss</b>	> 20 dB	
<b>Power Capability</b>	> 100 W (f < 1GHz), > 40 W (f > 1GHz)	

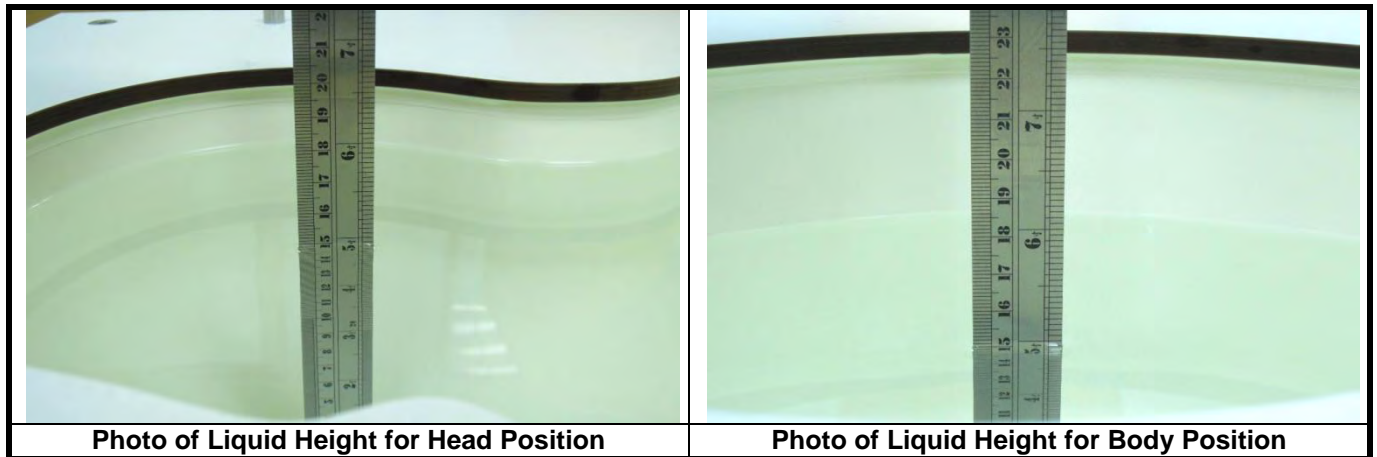
### 3.2.7 Power Source

<b>Model</b>	Powersource1	
<b>Signal Type</b>	Continuous Wave	
<b>Operating Frequencies</b>	600 MHz to 5850 MHz	
<b>Output Power</b>	-5.0 dBm to +17.0 dBm	
<b>Power Supply</b>	5V DC, via USB jack	
<b>Power Consumption</b>	<3 W	
<b>Applications</b>	System performance check and validation with a CW signal.	

# SAR Test Report

## 3.2.8 Tissue Simulating Liquids

For SAR measurement of the field distribution inside the phantom, the phantom must be filled with homogeneous tissue simulating liquid to a depth of at least 15 cm. For head SAR testing, the liquid height from the ear reference point (ERP) of the phantom to the liquid top surface is larger than 15 cm. For body SAR testing, the liquid height from the center of the flat phantom to the liquid top surface is larger than 15 cm. The nominal dielectric values of the tissue simulating liquids in the phantom and the tolerance of 10 % are listed in Table-3.1.



**Table-3.1 Targets of Tissue Simulating Liquid**

Frequency (MHz)	Target Permittivity	Range of $\pm 10\%$	Target Conductivity	Range of $\pm 10\%$
450	43.5	39.2 ~ 47.9	0.87	0.78 ~ 0.96
750	41.9	37.7 ~ 46.1	0.89	0.80 ~ 0.98
835	41.5	37.4 ~ 45.7	0.90	0.81 ~ 0.99
900	41.5	37.4 ~ 45.7	0.97	0.87 ~ 1.07
1450	40.5	36.5 ~ 44.6	1.20	1.08 ~ 1.32
1500	40.4	36.4 ~ 44.4	1.23	1.11 ~ 1.35
1640	40.2	36.2 ~ 44.2	1.31	1.18 ~ 1.44
1750	40.1	36.1 ~ 44.1	1.37	1.23 ~ 1.51
1800	40.0	36.0 ~ 44.0	1.40	1.26 ~ 1.54
1900	40.0	36.0 ~ 44.0	1.40	1.26 ~ 1.54
2000	40.0	36.0 ~ 44.0	1.40	1.26 ~ 1.54
2100	39.8	35.8 ~ 43.8	1.49	1.34 ~ 1.64
2300	39.5	35.6 ~ 43.5	1.67	1.50 ~ 1.84
2450	39.2	35.3 ~ 43.1	1.80	1.62 ~ 1.98
2600	39.0	35.1 ~ 42.9	1.96	1.76 ~ 2.16
3000	38.5	34.7 ~ 42.4	2.40	2.16 ~ 2.64
3500	37.9	34.1 ~ 41.7	2.91	2.62 ~ 3.20
4000	37.4	33.7 ~ 41.1	3.43	3.09 ~ 3.77
4500	36.8	33.1 ~ 40.5	3.94	3.55 ~ 4.33
5000	36.2	32.6 ~ 39.8	4.45	4.01 ~ 4.90
5200	36.0	32.4 ~ 39.6	4.66	4.19 ~ 5.13
5400	35.8	32.2 ~ 39.4	4.86	4.37 ~ 5.35
5600	35.5	32.0 ~ 39.1	5.07	4.56 ~ 5.58
5800	35.3	31.8 ~ 38.8	5.27	4.74 ~ 5.80
6000	35.1	31.6 ~ 38.6	5.48	4.93 ~ 6.03

## SAR Test Report

The dielectric properties of the tissue simulating liquids are defined in IEC 62209-1 and IEC 62209-2. The dielectric properties of the tissue simulating liquids were verified prior to the SAR evaluation using a dielectric assessment kit and a network analyzer.

Since the range of  $\pm 10\%$  of the required target values is used to measure relative permittivity and conductivity, the SAR correction procedure is applied to correct measured SAR for the deviations in permittivity and conductivity. Only positive correction has been used to scale up the measured SAR, and SAR result would not be corrected if the correction  $\Delta$  SAR has a negative sign.

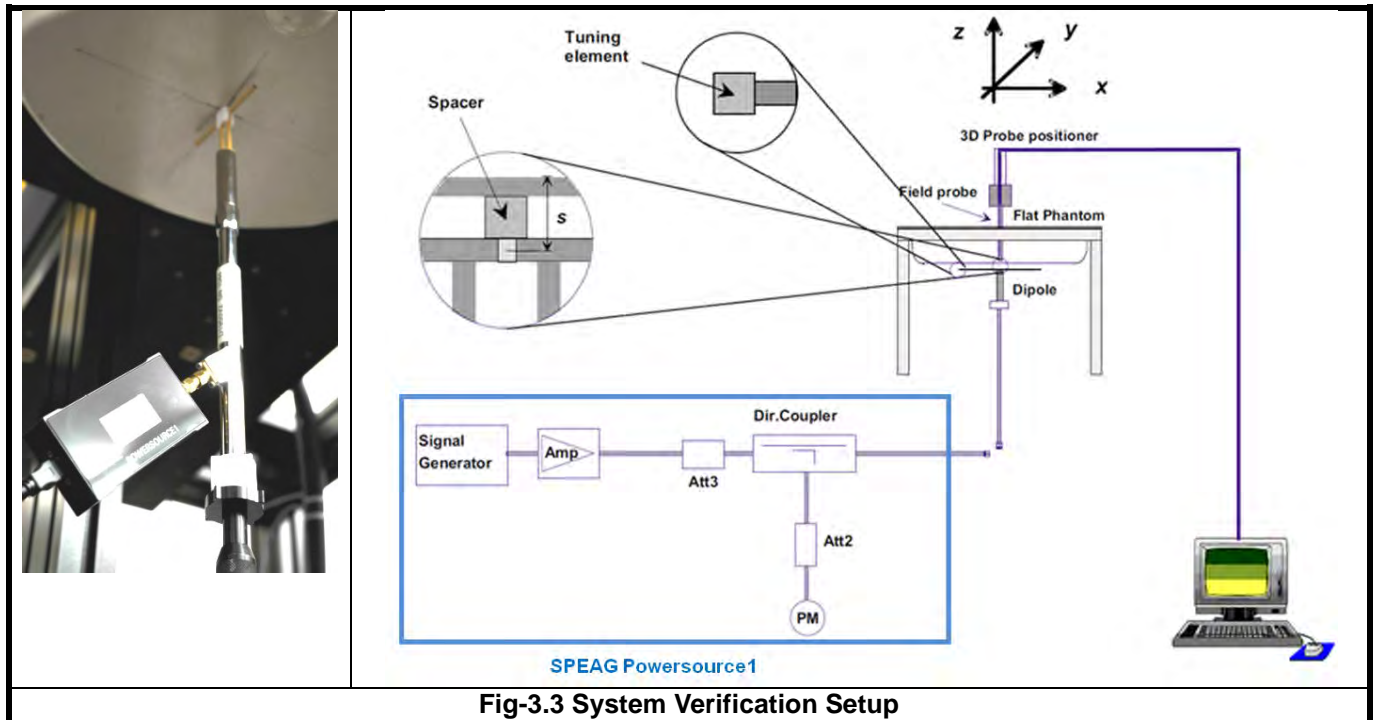
The following table gives the recipes for tissue simulating liquids.

**Table-3.2 Recipes of Tissue Simulating Liquid**

Tissue Type	Bactericide	DGBE	HEC	NaCl	Sucrose	Triton X-100	Water	Diethylene Glycol Mono-hexylether
H750	0.2	-	0.2	1.5	56.0	-	42.1	-
H835	0.2	-	0.2	1.5	57.0	-	41.1	-
H900	0.2	-	0.2	1.4	58.0	-	40.2	-
H1450	-	43.3	-	0.6	-	-	56.1	-
H1640	-	45.8	-	0.5	-	-	53.7	-
H1750	-	47.0	-	0.4	-	-	52.6	-
H1800	-	44.5	-	0.3	-	-	55.2	-
H1900	-	44.5	-	0.2	-	-	55.3	-
H2000	-	44.5	-	0.1	-	-	55.4	-
H2300	-	44.9	-	0.1	-	-	55.0	-
H2450	-	45.0	-	0.1	-	-	54.9	-
H2600	-	45.1	-	0.1	-	-	54.8	-
H3500	-	8.0	-	0.2	-	20.0	71.8	-
H5G	-	-	-	-	-	17.2	65.5	17.3

## 3.3 SAR System Verification

The system check verifies that the system operates within its specifications. It is performed daily or before every SAR measurement. The system check uses normal SAR measurements in the flat section of the phantom with a matched dipole at a specified distance. The system verification setup is shown as below.



The SPEAG Powersource1 is a portable and very stable RF source providing a continuous wave (CW) signal. It is designed for conducting SAR system checks and SAR system validation of DASY and is compatible with IEC 62209-1, IEC 62209-2 and IEEE Std 1528 standards. The Powersource1 has been calibrated by SPEAG's ISO/IEC 17025-accredited calibration center. When using Powersource1, the setup can be simplified, as shown in Fig-3.3. The signal purity is warranted by design. Since the Powersource1 is calibrated, no additional equipment is needed and the Powersource1 can directly be connected to the SMA connector of the dipole without a cable as all separate components (signal generator, amplifier, coupler and power meter) are built into the unit.

The validation dipole is placed beneath the flat phantom with the specific spacer in place. The distance spacer is touch the phantom surface with a light pressure at the reference marking and be oriented parallel to the long side of the phantom. The Powersource1 is adjusted for the desired forward power of 17 dBm at the dipole connector and the RF output power would be turned on. After system check testing, the SAR result will be normalized to 1W forward input power and compared with the reference SAR value derived from validation dipole certificate report. The deviation of system check should be within 10 %.

## 3.4 SAR Measurement Procedure

According to the SAR test standard, the recommended procedure for assessing the peak spatial-average SAR value consists of the following steps:

- (a) Power reference measurement
- (b) Area scan
- (c) Zoom scan
- (d) Power drift measurement

The SAR measurement procedures for each of test conditions are as follows:

- (a) Make EUT to transmit maximum output power
- (b) Measure conducted output power through RF cable
- (c) Place the EUT in the specific position of phantom
- (d) Perform SAR testing steps on the DASY system
- (e) Record the SAR value

### 3.4.1 Area Scan and Zoom Scan Procedure

First area scan is used to locate the approximate location(s) of the local peak SAR value(s). The measurement grid within an area scan is defined by the grid extent, grid step size and grid offset. Next, in order to determine the EM field distribution in a three-dimensional spatial extension, zoom scan is required. The zoom scan is performed around the highest E-field value to determine the averaged SAR-distribution.

Measure the local SAR at a test point at 1.4 mm of the inner surface of the phantom recommended by SEPAG. The area scan (two-dimensional SAR distribution) is performed cover at least an area larger than the projection of the EUT or antenna. The measurement resolution and spatial resolution for interpolation shall be chosen to allow identification of the local peak locations to within one-half of the linear dimension of the corresponding side of the zoom scan volume. Following table provides the measurement parameters required for the area scan.

Parameter	$f \leq 3 \text{ GHz}$	$3 \text{ GHz} < f \leq 6 \text{ GHz}$
Maximum distance from closest measurement point to phantom surface	$5 \pm 1$	$\delta \ln(2)/2 \pm 0.5$
Maximum probe angle from probe axis to phantom surface normal at the measurement location	$30^\circ \pm 1^\circ$	$20^\circ \pm 1^\circ$
Maximum area scan spatial resolution: $\Delta x_{\text{Area}}, \Delta y_{\text{Area}}$	$\leq 2 \text{ GHz: } \leq 15 \text{ mm}$ $2 - 3 \text{ GHz: } \leq 12 \text{ mm}$	$3 - 4 \text{ GHz: } \leq 12 \text{ mm}$ $4 - 6 \text{ GHz: } \leq 10 \text{ mm}$

From the scanned SAR distribution, identify the position of the maximum SAR value, in addition identify the positions of any local maxima with SAR values within 2 dB of the maximum value that will not be within the zoom scan of other peaks. Additional peaks shall be measured only when the primary peak is within 2 dB of the SAR compliance limit (e.g. 1 W/kg for 1.6 W/kg, 1 g limit; or 1.26 W/kg for 2 W/kg, 10 g limit).



The zoom scan (three-dimensional SAR distribution) is performed at the local maxima locations identified in previous area scan procedure. The zoom scan volume must be larger than the required minimum dimensions. When graded grids are used, which only applies in the direction normal to the phantom surface, the initial grid separation closest to the phantom surface and subsequent graded grid increment ratios must satisfy the required protocols. The 1-g SAR averaging volume must be fully contained within the zoom scan measurement volume boundaries; otherwise, the measurement must be repeated by shifting or expanding the zoom scan volume. The similar requirements also apply to 10-g SAR measurements. Following table provides the measurement parameters required for the zoom scan.

Parameter		$f \leq 3$ GHz	$3 \text{ GHz} < f \leq 6$ GHz
Maximum zoom scan spatial resolution: $\Delta x_{\text{Zoom}}, \Delta y_{\text{Zoom}}$		$\leq 2$ GHz: $\leq 8$ mm 2 – 3 GHz: $\leq 5$ mm	3 – 4 GHz: $\leq 5$ mm 4 – 6 GHz: $\leq 4$ mm
Maximum zoom scan spatial resolution, normal to phantom surface	<i>uniform grid:</i> $\Delta z_{\text{Zoom}}(n)$	$\leq 5$ mm	3 – 4 GHz: $\leq 4$ mm 4 – 5 GHz: $\leq 3$ mm 5 – 6 GHz: $\leq 2$ mm
	<i>graded grids:</i> $\Delta z_{\text{Zoom}}(1)$	$\leq 4$ mm	3 – 4 GHz: $\leq 3.0$ mm 4 – 5 GHz: $\leq 2.5$ mm 5 – 6 GHz: $\leq 2.0$ mm
	$\Delta z_{\text{Zoom}}(n>1)$	$\leq 1.5 \cdot \Delta z_{\text{Zoom}}(n-1)$ mm	
Minimum zoom scan volume (x, y, z)		$\geq 30$ mm	3 – 4 GHz: $\geq 28$ mm 4 – 5 GHz: $\geq 25$ mm 5 – 6 GHz: $\geq 22$ mm

Per IEC 62209-2 AMD1, the successively higher resolution zoom scan is required if the zoom scan measured as defined above complies with both of the following criteria, or if the peak spatial-average SAR is below 0.1 W/kg, no additional measurements are needed:

- (1) The smallest horizontal distance from the local SAR peaks to all points 3 dB below the SAR peak shall be larger than the horizontal grid steps in both x and y directions ( $\Delta x, \Delta y$ ). This shall be checked for the measured zoom scan plane conformal to the phantom at the distance  $z_{M1}$ .
- (2) The ratio of the SAR at the second measured point (M2) to the SAR at the closest measured point (M1) at the x-y location of the measured maximum SAR value shall be at least 30 %.

If one or both of the above criteria are not met, the zoom scan measurement shall be repeated using a finer resolution. New horizontal and vertical grid steps shall be determined from the measured SAR distribution so that the above criteria are met. Compliance with the above two criteria shall be demonstrated for the new measured zoom scan.

### 3.4.2 Volume Scan Procedure

The volume scan is used for assess overlapping SAR distributions for antennas transmitting in different frequency bands. It is equivalent to an oversized zoom scan used in standalone measurements. The measurement volume will be used to enclose all the simultaneous transmitting antennas. For antennas transmitting simultaneously in different frequency bands, the volume scan is measured separately in each frequency band. In order to sum correctly to compute the 1g aggregate SAR, the EUT remain in the same test position for all measurements and all volume scan use the same spatial resolution and grid spacing. When all volume scan were completed, the software, SEMCAD postprocessor can combine and subsequently superpose these measurement data to calculating the multiband SAR.



### 3.4.3 Power Drift Monitoring

All SAR testing is under the EUT install full charged battery and transmit maximum output power. In DASYS measurement software, the power reference measurement and power drift measurement procedures are used for monitoring the power drift of EUT during SAR test. Both these procedures measure the field at a specified reference position before and after the SAR testing. The software will calculate the field difference in dB. If the power drift more than 5%, the SAR will be retested.

### 3.4.4 Spatial Peak SAR Evaluation

The procedure for spatial peak SAR evaluation has been implemented according to the test standard. It can be conducted for 1g and 10g, as well as for user-specific masses. The DASYS software includes all numerical procedures necessary to evaluate the spatial peak SAR value.

The base for the evaluation is a "cube" measurement. The measured volume must include the 1g and 10g cubes with the highest averaged SAR values. For that purpose, the center of the measured volume is aligned to the interpolated peak SAR value of a previously performed area scan.

The entire evaluation of the spatial peak values is performed within the post-processing engine (SEMCAD). The system always gives the maximum values for the 1g and 10g cubes. The algorithm to find the cube with highest averaged SAR is divided into the following stages:

- (a) Extraction of the measured data (grid and values) from the Zoom Scan
- (b) Calculation of the SAR value at every measurement point based on all stored data (A/D values and measurement parameters)
- (c) Generation of a high-resolution mesh within the measured volume
- (d) Interpolation of all measured values from the measurement grid to the high-resolution grid
- (e) Extrapolation of the entire 3-D field distribution to the phantom surface over the distance from sensor to surface
- (f) Calculation of the averaged SAR within masses of 1g and 10g

### 3.4.5 SAR Averaged Methods

In DASYS, the interpolation and extrapolation are both based on the modified Quadratic Shepard's method. The interpolation scheme combines a least-square fitted function method and a weighted average method which are the two basic types of computational interpolation and approximation.

Extrapolation routines are used to obtain SAR values between the lowest measurement points and the inner phantom surface. The extrapolation distance is determined by the surface detection distance and the probe sensor offset. The uncertainty increases with the extrapolation distance. To keep the uncertainty within 1% for the 1 g and 10 g cubes, the extrapolation distance should not be larger than 5 mm.

## 4. SAR Measurement Evaluation

### 4.1 EUT Configuration and Setting

#### <Connections between EUT and System Simulator>

For WWAN SAR testing, the EUT was linked and controlled by base station emulator. Communication between the EUT and the emulator was established by air link. The distance between the EUT and the communicating antenna of the emulator is larger than 50 cm and the output power radiated from the emulator antenna is at least 30 dB smaller than the output power of EUT. The EUT was set from the emulator to radiate maximum output power during SAR testing.

#### <Considerations Related to GSM / GPRS / EDGE for Setup and Testing>

The maximum multi-slot capability supported by this device is as below.

1. This EUT is class B device
2. This EUT supports GPRS multi-slot class 12 (max. uplink: 4, max. downlink: 4, total timeslots: 5)
3. This EUT supports EDGE multi-slot class 12 (max. uplink: 4, max. downlink: 4, total timeslots: 5)

#### <Considerations Related to WCDMA for Setup and Testing>

##### Release 5 HSDPA Data Devices

The 3G SAR test reduction procedure is applied to body SAR with 12.2 kbps RMC as the primary mode. Otherwise, body SAR for HSDPA is measured using an FRC with H-Set 1 in Sub-test 1 and a 12.2 kbps RMC configured in Test Loop Mode 1, for the highest reported SAR configuration in 12.2 kbps RMC without HSDPA. HSDPA is configured according to the applicable UE category of a test device. The number of HS-DSCH/HS-PDSCHs, HARQ processes, minimum inter-TTI interval, transport block sizes and RV coding sequence are defined by the H-set. To maintain a consistent test configuration and stable transmission conditions, QPSK is used in the H-set for SAR testing. HS-DPCCH should be configured with a CQI feedback cycle of 4 ms and a CQI repetition factor of 2 to maintain a constant rate of active CQI slots. DPCCH and DPDCH gain factors ( $\beta_c$ ,  $\beta_d$ ), and HS-DPCCH power offset parameters ( $\Delta_{ACK}$ ,  $\Delta_{NACK}$ ,  $\Delta_{CQI}$ ) are set according to values indicated in below. The CQI value is determined by the UE category, transport block size, number of HS-PDSCHs and modulation used in the H-set.

Sub-test	$\beta_c$	$\beta_d$	$\beta_d$ (SF)	$\beta_d/\beta_c$	$\beta_{HS}^{(1)(2)}$	CM <sup>(3)</sup> (dB)	MPR <sup>(3)</sup> (dB)
1	2/15	15/15	64	2/15	4/15	0.0	0.0
2	12/15 <sup>(4)</sup>	15/15 <sup>(4)</sup>	64	12/15 <sup>(4)</sup>	24/15	1.0	0.0
3	15/15	8/15	64	15/8	30/15	1.5	0.5
4	15/15	4/15	64	15/4	30/15	1.5	0.5

Note 1:  $\Delta_{ACK}$ ,  $\Delta_{NACK}$  and  $\Delta_{CQI}$  = 30/15 with  $\beta_{HS}$  = 30/15\* $\beta_c$ .  
 Note 2: For the HS-DPCCH power mask requirement test in clause 5.2C, 5.7A, and the Error Vector Magnitude (EVM) with HS-DPCCH test in clause 5.13.1A, and HSDPA EVM with phase discontinuity in clause 5.13.1AA,  $\Delta_{ACK}$  and  $\Delta_{NACK}$  = 30/15 with  $\beta_{HS}$  = 30/15\* $\beta_c$ , and  $\Delta_{CQI}$  = 24/15 with  $\beta_{HS}$  = 24/15\* $\beta_c$ .  
 Note 3: CM = 1 for  $\beta_d/\beta_c$  = 12/15,  $\beta_{HS}/\beta_c$  = 24/15. For all other combinations of DPDCH, DPCCH and HS-DPCCH the MPR is based on the relative CM difference. This is applicable for only UEs that support HSDPA in release 6 and later releases.  
 Note 4: For subtest 2 the  $\beta_d/\beta_c$  ratio of 12/15 for the TFC during the measurement period (TF1, TF0) is achieved by setting the signalled gain factors for the reference TFC (TF1, TF0) to  $\beta_c$  = 11/15 and  $\beta_d$  = 15/15.

# SAR Test Report

## Release 6 HSUPA Data Devices

The 3G SAR test reduction procedure is applied to body SAR with 12.2 kbps RMC as the primary mode. Otherwise, body SAR for HSPA is measured with E-DCH Sub-test 5, using H-Set 1 and QPSK for FRC and a 12.2 kbps RMC configured in Test Loop Mode 1 and power control algorithm 2, according to the highest reported body SAR configuration in 12.2 kbps RMC without HSPA. When VOIP applies to head exposure, the 3G SAR test reduction procedure is applied with 12.2 kbps RMC as the primary mode. Otherwise, the same HSPA configuration used for body SAR measurements are applied to head exposure testing. Due to inner loop power control requirements in HSPA, a communication test set is required for output power and SAR tests. The 12.2 kbps RMC, FRC H-set 1 and E-DCH configurations for HSPA are configured according to the  $\beta$  values indicated in below.

Sub-test	$\beta_c$	$\beta_d$	$\beta_d$ (SF)	$\beta_d/\beta_d$	$\beta_{HS}^{(1)}$	$\beta_{ac}$	$\beta_{ed}^{(4)(5)}$	$\beta_{ed}$ (SF)	$\beta_{ed}$ (Codes)	CM <sup>(2)</sup> (dB)	MPR <sup>(2)(6)</sup> (dB)	AG <sup>(5)</sup> Index	E-TFCI
1	11/15 <sup>(3)</sup>	15/15 <sup>(3)</sup>	64	11/15 <sup>(3)</sup>	22/15	209/225	1309/225	4	1	1.0	0.0	20	75
2	6/15	15/15	64	6/15	12/15	12/15	94/75	4	1	3.0	2.0	12	67
3	15/15	9/15	64	15/9	30/15	30/15	$\beta_{ed1}$ : 47/15 $\beta_{ed2}$ : 47/15	4 4	2	2.0	1.0	15	92
4	2/15	15/15	64	2/15	4/15	2/15	56/75	4	1	3.0	2.0	17	71
5	15/15	0	-	-	5/15	5/15	47/15	4	1	1.0	0.0	12	67

Note 1: For sub-test 1 to 4,  $\Delta_{ACK}$ ,  $\Delta_{NACK}$  and  $\Delta_{COI} = 30/15$  with  $\beta_{HS} = 30/15 * \beta_c$ . For sub-test 5,  $\Delta_{ACK}$ ,  $\Delta_{NACK}$  and  $\Delta_{COI} = 5/15$  with  $\beta_{HS} = 5/15 * \beta_c$ .  
 Note 2: CM = 1 for  $\beta_d/\beta_d = 12/15$ ,  $\beta_{HS} \beta_c = 24/15$ . For all other combinations of DPDCH, DPCCH, HS-DPCCH, E-DPDCH and E-DPCCH the MPR is based on the relative CM difference.  
 Note 3: For subtest 1 the  $\beta_d/\beta_d$  ratio of 11/15 for the TFC during the measurement period (TF1, TF0) is achieved by setting the signalled gain factors for the reference TFC (TF1, TF1) to  $\beta_c = 10/15$  and  $\beta_d = 15/15$ .  
 Note 4: In case of testing by UE using E-DPDCH Physical Layer category 1, Sub-test 3 is omitted according to TS25.306 Table 5.1g.  
 Note 5:  $\beta_{ed}$  can not be set directly; it is set by Absolute Grant Value.  
 Note 6: For subtests 2, 3 and 4, UE may perform E-DPDCH power scaling at max power which could results in slightly smaller MPR values.

## DC-HSDPA SAR Guidance

The 3G SAR test reduction procedure is applied to DC-HSDPA with 12.2 kbps RMC as the primary mode. Otherwise, when SAR is required for Rel. 5 HSDPA, SAR is required for Rel. 8 DC-HSDPA. Power is measured for DC-HSDPA according to the H-Set 12, FRC configuration in Table C.8.1.12 of 3GPP TS 34.121-1 to determine SAR test reduction. A primary and a secondary serving HS-DSCH Cell are required to perform the power measurement and for the results to be acceptable.

## SAR Test Report

### <Considerations Related to LTE for Setup and Testing>

This device contains LTE transmitter which follows 3GPP standards, is category 3, supports both QPSK and QAM modulations, and supported LTE band and channel bandwidth is listed in below. The output power was tested per 3GPP TS 36.521-1 maximum transmit procedures for both QPSK and QAM modulation. The results please refer to section 4.6 of this report.

EUT Supported LTE Band and Channel Bandwidth						
LTE Band	BW 1.4 MHz	BW 3 MHz	BW 5 MHz	BW 10 MHz	BW 15 MHz	BW 20 MHz
2	V	V	V	V	V	V
4	V	V	V	V	V	V
5	V	V	V	V		
7			V	V	V	V
12	V	V	V	V		
13	V	V	V	V		
25	V	V	V	V	V	V
26	V	V	V	V	V	
38			V	V	V	V
41			V	V	V	V

The LTE maximum power reduction (MPR) in accordance with 3GPP TS 36.101 is active all times during LTE operation. The allowed MPR for the maximum output power is specified in below.

Modulation	Channel Bandwidth / RB Configurations						LTE MPR Setting (dB)
	BW 1.4 MHz	BW 3 MHz	BW 5 MHz	BW 10 MHz	BW 15 MHz	BW 20 MHz	
QPSK	> 5	> 4	> 8	> 12	> 16	> 18	1
16QAM	<= 5	<= 4	<= 8	<= 12	<= 16	<= 18	1
16QAM	> 5	> 4	> 8	> 12	> 16	> 18	2

ote: MPR is according to the standard and implemented in the circuit (mandatory).

In addition, the device is compliant with additional maximum power reduction (A-MPR) requirements defined in 3GPP TS 36.101 section 6.2.4 that was disabled for all FCC compliance testing.

During LTE SAR testing, the related parameters of operating band, channel bandwidth, uplink channel number, modulation type, and RB was set in base station simulator. When the EUT has registered and communicated to base station simulator, the simulator set to make EUT transmitting the maximum radiated power.

### <Considerations Related to WLAN for Setup and Testing>

In general, various vendor specific external test software and chipset based internal test modes are typically used for SAR measurement. These chipset based test mode utilities are generally hardware and manufacturer dependent, and often include substantial flexibility to reconfigure or reprogram a device. A Wi-Fi device must be configured to transmit continuously at the required data rate, channel bandwidth and signal modulation, using the highest transmission duty factor supported by the test mode tools for SAR measurement. The test frequencies established using test mode must correspond to the actual channel frequencies. When 802.11 frame gaps are accounted for in the transmission, a maximum transmission duty factor of 92 - 96% is typically achievable in most test mode configurations. A minimum transmission duty factor of 85% is required to avoid certain hardware and device implementation issues related to wide range SAR scaling. In addition, a periodic transmission duty factor is required for current generation SAR systems to measure SAR correctly. The reported SAR must be scaled to 100% transmission duty factor to determine compliance at the maximum tune-up tolerance limit.

According to KDB 248227 D01, this device has installed WLAN engineering testing software which can provide continuous transmitting RF signal. During WLAN SAR testing, this device was operated to transmit continuously at the maximum transmission duty with specified transmission mode, operating frequency, lowest data rate, and maximum output power.

### Initial Test Configuration

An initial test configuration is determined for OFDM transmission modes in 2.4 GHz and 5 GHz bands according to the channel bandwidth, modulation and data rate combination(s) with the highest maximum output power specified for production units in each standalone and aggregated frequency band. When the same maximum power is specified for multiple transmission modes in a frequency band, the largest channel bandwidth, lowest order modulation, lowest data rate and lowest order 802.11a/g/n/ac mode is used for SAR measurement, on the highest measured output power channel in the initial test configuration, for each frequency band.

### Subsequent Test Configuration

SAR measurement requirements for the remaining 802.11 transmission mode configurations that have not been tested in the initial test configuration are determined separately for each standalone and aggregated frequency band, in each exposure condition, according to the maximum output power specified for production units. Additional power measurements may be required to determine if SAR measurements are required for subsequent highest output power channels in a subsequent test configuration. When the highest reported SAR for the initial test configuration according to the initial test position or fixed exposure position requirements, is adjusted by the ratio of the subsequent test configuration to initial test configuration specified maximum output power and the adjusted SAR is  $\leq 1.2$  W/kg, SAR is not required for that subsequent test configuration.

### **SAR Test Configuration and Channel Selection**

When multiple channel bandwidth configurations in a frequency band have the same specified maximum output power, the initial test configuration is using largest channel bandwidth, lowest order modulation, lowest data rate, and lowest order 802.11 mode (i.e., 802.11a is chosen over 802.11n then 802.11ac or 802.11g is chosen over 802.11n). After an initial test configuration is determined, if multiple test channels have the same measured maximum output power, the channel chosen for SAR measurement is determined according to the following.

- 1) The channel closest to mid-band frequency is selected for SAR measurement.
- 2) For channels with equal separation from mid-band frequency; for example, high and low channels or two mid-band channels, the higher frequency (number) channel is selected for SAR measurement.

### **Test Reduction for U-NII-1 (5.2 GHz) and U-NII-2A (5.3 GHz) Bands**

For devices that operate in both U-NII bands using the same transmitter and antenna(s), SAR test reduction is determined according to the following.

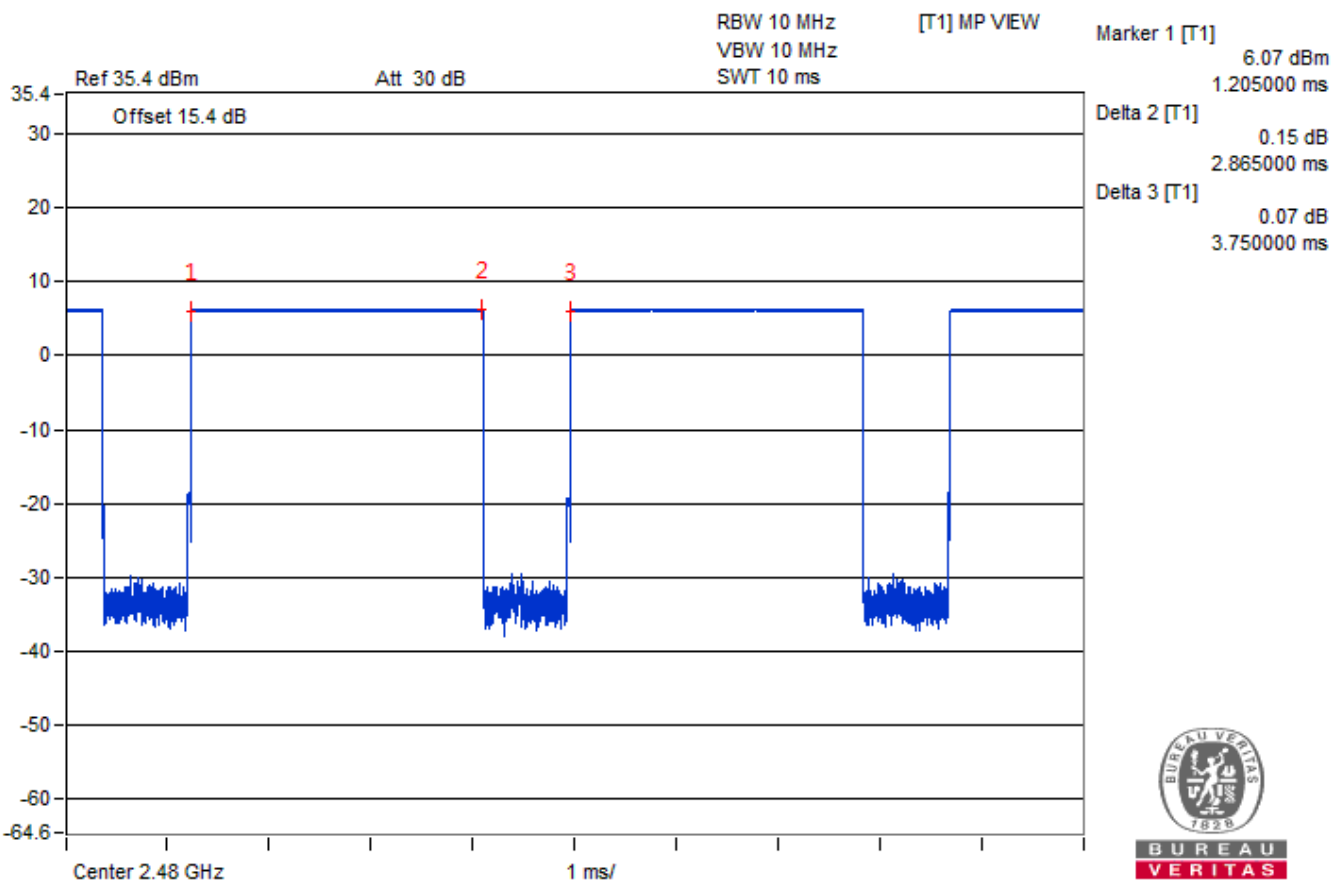
- 1) When the same maximum output power is specified for both bands, begin SAR measurement in U-NII-2A band by applying the OFDM SAR requirements. If the highest reported SAR for a test configuration is  $\leq 1.2$  W/kg, SAR is not required for U-NII-1 band for that configuration (802.11 mode and exposure condition).
- 2) When different maximum output power is specified for the bands, begin SAR measurement in the band with higher specified maximum output power. The highest reported SAR for the tested configuration is adjusted by the ratio of lower to higher specified maximum output power for the two bands. When the adjusted SAR is  $\leq 1.2$  W/kg, SAR is not required for the band with lower maximum output power in that test configuration.

# SAR Test Report

## <Considerations Related to Bluetooth for Setup and Testing>

This device has installed Bluetooth engineering testing software which can provide continuous transmitting RF signal. During Bluetooth SAR testing, this device was operated to transmit continuously at the maximum transmission duty with specified transmission mode, operating frequency, lowest data rate, and maximum output power.

The Bluetooth call box has been used during SAR measurement and the EUT was set to DH5 mode at the maximum output power. Its duty factor was calculated as below and the measured SAR for Bluetooth would be scaled to the 100% transmission duty factor to determine compliance.



**Time-domain plot for Bluetooth transmission signal**

The duty factor of Bluetooth signal has been calculated as following.

$$\text{Duty Factor} = \text{Pulse Width} / \text{Total Period} = 2.865/3.750=76.4 \%$$



## 4.2 EUT Testing Position

### 4.2.1 Extremity Exposure Conditions

This hand-held device was test on the extremity exposure conditions. Extremity SAR was tested on the Front Face, Rear Face, Left Side, Right Side, Top Side and Bottom Side with 0 cm separation distance.

## 4.3 Tissue Verification

The measuring results for tissue simulating liquid are shown as below.

Frequency (MHz)	Liquid Temp. (°C)	Measured Conductivity ( $\sigma$ )	Measured Permittivity ( $\epsilon_r$ )	Target Conductivity ( $\sigma$ )	Target Permittivity ( $\epsilon_r$ )	Conductivity Deviation (%)	Permittivity Deviation (%)	Test Date
750	23.2	0.928	43.42	0.89	41.9	4.27	3.63	Dec. 03, 2020
835	23.3	0.936	43.142	0.9	41.5	4.00	3.96	Nov. 28, 2020
835	23.2	0.908	42.687	0.9	41.5	0.89	2.86	Dec. 03, 2020
1750	23.3	1.319	40.264	1.37	40.1	-3.72	0.41	Dec. 02, 2020
1750	23.1	1.328	39.799	1.37	40.1	-3.07	-0.75	Dec. 08, 2020
1900	23.3	1.452	39.334	1.4	40	3.71	-1.66	Nov. 28, 2020
1900	23.1	1.459	39.22	1.4	40	4.21	-1.95	Dec. 08, 2020
1900	23.2	1.456	39.288	1.4	40	4.00	-1.78	Dec. 11, 2020
2300	23.1	1.724	39.637	1.67	39.5	3.23	0.35	Dec. 05, 2020
2450	23.2	1.879	39.289	1.8	39.2	4.39	0.23	Dec. 09, 2020
2600	23.3	2.049	38.987	1.96	39	4.54	-0.03	Dec. 04, 2020
2600	23.1	2.028	37.803	1.96	39	3.47	-3.07	Dec. 08, 2020
5250	23.3	4.835	36.46	4.71	35.9	2.65	1.56	Dec. 10, 2020
5600	23.3	5.224	35.924	5.07	35.5	3.04	1.19	Dec. 10, 2020
5750	23.3	5.364	35.91	5.22	35.4	2.76	1.44	Dec. 10, 2020

The dielectric properties of the tissue simulating liquid have been measured within 24 hours before the SAR testing and within  $\pm 10\%$  of the target values. Liquid temperature during the SAR testing has kept within  $\pm 2^\circ\text{C}$ .

# SAR Test Report

## 4.4 System Validation

The SAR measurement system was validated according to procedures in KDB 865664 D01. The validation status in tabulated summary is as below.

Test Date	Probe S/N	Calibration Point	Measured Conductivity ( $\sigma$ )	Measured Permittivity ( $\epsilon_r$ )	Validation for CW			Validation for Modulation		
					Sensitivity Range	Probe Linearity	Probe Isotropy	Modulation Type	Duty Factor	PAR
Dec. 03, 2020	7554	750	0.928	43.42	Pass	Pass	Pass	N/A	N/A	N/A
Nov. 28, 2020	3820	835	0.936	43.142	Pass	Pass	Pass	GMSK	Pass	N/A
Dec. 03, 2020	7554	835	0.908	42.687	Pass	Pass	Pass	N/A	N/A	N/A
Dec. 02, 2020	7554	1750	1.319	40.264	Pass	Pass	Pass	N/A	N/A	N/A
Dec. 08, 2020	7555	1750	1.328	39.799	Pass	Pass	Pass	N/A	N/A	N/A
Nov. 28, 2020	3820	1900	1.452	39.334	Pass	Pass	Pass	GMSK	Pass	N/A
Dec. 08, 2020	7555	1900	1.459	39.22	Pass	Pass	Pass	N/A	N/A	N/A
Dec. 11, 2020	3650	1900	1.456	39.288	Pass	Pass	Pass	N/A	N/A	N/A
Dec. 05, 2020	7554	2300	1.724	39.637	Pass	Pass	Pass	N/A	N/A	N/A
Dec. 09, 2020	3650	2450	1.879	39.289	Pass	Pass	Pass	OFDM	N/A	Pass
Dec. 04, 2020	7554	2600	2.049	38.987	Pass	Pass	Pass	N/A	N/A	N/A
Dec. 08, 2020	7555	2600	2.028	37.803	Pass	Pass	Pass	N/A	N/A	N/A
Dec. 10, 2020	7537	5250	4.835	36.46	Pass	Pass	Pass	OFDM	N/A	Pass
Dec. 10, 2020	7537	5600	5.224	35.924	Pass	Pass	Pass	OFDM	N/A	Pass
Dec. 10, 2020	7537	5750	5.364	35.91	Pass	Pass	Pass	OFDM	N/A	Pass

## 4.5 System Verification

The measuring result for system verification is tabulated as below.

Test Date	Frequency (MHz)	1W Target SAR-1g (W/kg)	Measured SAR-1g (W/kg)	Normalized to 1W SAR-1g (W/kg)	Deviation (%)	Dipole S/N	Probe S/N	DAE S/N
Dec. 03, 2020	750	5.53	0.277	5.54	0.18	1013	7554	1590
Nov. 28, 2020	835	6.21	0.321	6.42	3.38	4d121	3820	1431
Dec. 03, 2020	835	6.21	0.332	6.64	6.92	4d121	7554	1590
Dec. 02, 2020	1750	18.90	0.955	19.10	1.06	1055	7554	1590
Dec. 08, 2020	1750	18.90	0.934	18.68	-1.16	1055	7555	1589
Nov. 28, 2020	1900	20.90	1.04	20.80	-0.48	5d036	3820	1431
Dec. 08, 2020	1900	20.90	1.06	21.20	1.44	5d036	7555	1589
Dec. 11, 2020	1900	20.90	1.07	21.40	2.39	5d036	3650	861
Dec. 05, 2020	2300	23.30	1.27	25.40	9.01	1004	7554	1590
Dec. 09, 2020	2450	24.30	1.29	25.80	6.17	737	3650	861
Dec. 04, 2020	2600	25.00	1.23	24.60	-1.60	1020	7554	1590
Dec. 08, 2020	2600	25.00	1.24	24.80	-0.80	1020	7555	1589
Dec. 10, 2020	5250	22.80	1.15	23.00	0.88	1019	7537	1277
Dec. 10, 2020	5600	23.70	1.16	23.20	-2.11	1019	7537	1277
Dec. 10, 2020	5750	22.80	1.05	21.00	-7.89	1019	7537	1277

### Note:

Comparing to the reference SAR value provided by SPEAG in dipole calibration certificate, the deviation of system check results is within its specification of 10 %. The result indicates the system check can meet the variation criterion and the plots please refer to Appendix A of this report.

## 4.6 Maximum Output Power

### 4.6.1 Maximum Target Conducted Power

Refer to Appendix E.

### 4.6.2 Measured Conducted Power Result

Refer to Appendix F.

### 4.7 SAR Testing Results

#### 4.7.1 SAR Test Reduction Considerations

##### <KDB 447498 D01, General RF Exposure Guidance>

Testing of other required channels within the operating mode of a frequency band is not required when the reported SAR for the mid-band or highest output power channel is:

- (1)  $\leq 0.8$  W/kg or 2.0 W/kg, for 1-g or 10-g respectively, when the transmission band is  $\leq 100$  MHz
- (2)  $\leq 0.6$  W/kg or 1.5 W/kg, for 1-g or 10-g respectively, when the transmission band is between 100 MHz and 200 MHz
- (3)  $\leq 0.4$  W/kg or 1.0 W/kg, for 1-g or 10-g respectively, when the transmission band is  $\geq 200$  MHz

When SAR is not measured at the maximum power level allowed for production units, the measured SAR will be scaled to the maximum tune-up tolerance limit to determine compliance. The scaling factor for the tune-up power is defined as maximum tune-up limit (mW) / measured conducted power (mW). The reported SAR would be calculated by measured SAR x tune-up power scaling factor.

The SAR has been measured with highest transmission duty factor supported by the test mode tools for WLAN and/or Bluetooth. When the transmission duty factor could not achieve 100%, the reported SAR will be scaled to 100% transmission duty factor to determine compliance at the maximum tune-up power. The scaling factor for the duty factor is defined as 100% / transmission duty cycle (%). The reported SAR would be calculated by measured SAR x tune-up power scaling factor x duty cycle scaling factor.

##### <KDB 248227 D01, SAR Guidance for Wi-Fi Transmitters>

- (1) For handsets operating next to ear, hotspot mode or mini-tablet configurations, the initial test position procedures were applied. The test position with the highest extrapolated peak SAR will be used as the initial test position. When the reported SAR of initial test position is  $\leq 0.4$  W/kg, SAR testing for remaining test positions is not required. Otherwise, SAR is evaluated at the subsequent highest peak SAR positions until the reported SAR result is  $\leq 0.8$  W/kg or all test positions are measured.
- (2) For WLAN 2.4 GHz, the highest measured maximum output power channel for DSSS was selected for SAR measurement. When the reported SAR is  $\leq 0.8$  W/kg, no further SAR testing is required. Otherwise, SAR is evaluated at the next highest measured output power channel. When any reported SAR is  $> 1.2$  W/kg, SAR is required for the third channel. For OFDM modes (802.11g/n), SAR is not required when the highest reported SAR for DSSS is adjusted by the ratio of OFDM to DSSS specified maximum output power and it is  $\leq 1.2$  W/kg.
- (3) For WLAN 5GHz, the initial test configuration was selected according to the transmission mode with the highest maximum output power. When the reported SAR of initial test configuration is  $> 0.8$  W/kg, SAR is required for the subsequent highest measured output power channel until the reported SAR result is  $\leq 1.2$  W/kg or all required channels are measured. For other transmission modes, SAR is not required when the highest reported SAR for initial test configuration is adjusted by the ratio of subsequent test configuration to initial test configuration specified maximum output power and it is  $\leq 1.2$  W/kg.

# SAR Test Report

## 4.7.2 SAR Results for Extremity Exposure Condition (Test Separation Distance is 0 mm)

Plot No.	Band	Mode	Test Position	Ch.	Max. Tune-up Power (dBm)	Measured Conducted Power (dBm)	Scaling Factor	Power Drift (dB)	Measured SAR-10g (W/kg)	Scaled SAR-10g (W/kg)
	GSM850	GPRS11	Front Face	128	29.50	29.43	1.02	0.02	0.227	0.23
	GSM850	GPRS11	Rear Face	128	29.50	29.43	1.02	-0.11	0.371	0.38
	GSM850	GPRS11	Left Side	128	29.50	29.43	1.02	0.05	0.192	0.20
	GSM850	GPRS11	Right Side	128	29.50	29.43	1.02	-0.06	0.357	0.36
	GSM850	GPRS11	Top Side	128	29.50	29.43	1.02	0.11	0.119	0.12
	GSM850	GPRS11	Bottom Side	128	29.50	29.43	1.02	0	<0.001	0.00
01	GSM850	GPRS11	Rear Face	189	29.50	29.07	1.10	-0.06	0.373	0.41
	GSM850	GPRS11	Rear Face	251	29.50	29.17	1.08	0.02	0.307	0.33
	GSM1900	GPRS11	Front Face	810	26.00	25.66	1.08	-0.09	0.071	0.08
02	GSM1900	GPRS11	Rear Face	810	26.00	25.66	1.08	0.14	2.96	3.20
	GSM1900	GPRS11	Left Side	810	26.00	25.66	1.08	-0.1	0.13	0.14
	GSM1900	GPRS11	Right Side	810	26.00	25.66	1.08	-0.03	0.741	0.80
	GSM1900	GPRS11	Top Side	810	26.00	25.66	1.08	-0.11	0.269	0.29
	GSM1900	GPRS11	Bottom Side	810	26.00	25.66	1.08	0	<0.001	0.00
	GSM1900	GPRS11	Rear Face	512	26.00	25.32	1.17	-0.12	2.57	3.01
	GSM1900	GPRS11	Rear Face	661	26.00	25.56	1.11	0.09	2.67	2.96
	GSM1900	GPRS11	Rear Face	810	26.00	25.66	1.08	0.11	2.88	3.11
	WCDMA II	RMC12.2K	Front Face	9262	23.50	23.38	1.03	0.14	0.081	0.08
03	WCDMA II	RMC12.2K	Rear Face	9262	23.50	23.38	1.03	-0.12	2.49	2.56
	WCDMA II	RMC12.2K	Left Side	9262	23.50	23.38	1.03	-0.05	0.161	0.17
	WCDMA II	RMC12.2K	Right Side	9262	23.50	23.38	1.03	0.11	0.477	0.49
	WCDMA II	RMC12.2K	Top Side	9262	23.50	23.38	1.03	-0.05	0.264	0.27
	WCDMA II	RMC12.2K	Bottom Side	9262	23.50	23.38	1.03	0	<0.001	0.00
	WCDMA II	RMC12.2K	Rear Face	9400	23.50	23.36	1.03	-0.15	2.41	2.48
	WCDMA II	RMC12.2K	Rear Face	9538	23.50	22.97	1.13	0.1	2.24	2.53
	WCDMA II	RMC12.2K	Rear Face	9262	23.50	23.38	1.03	0.06	2.38	2.45
	WCDMA IV	RMC12.2K	Front Face	1413	23.50	23.49	1.00	0.07	0.236	0.24
	WCDMA IV	RMC12.2K	Rear Face	1413	23.50	23.49	1.00	0.08	2.6	2.60
	WCDMA IV	RMC12.2K	Left Side	1413	23.50	23.49	1.00	0.14	0.331	0.33
	WCDMA IV	RMC12.2K	Right Side	1413	23.50	23.49	1.00	0.02	0.284	0.28
	WCDMA IV	RMC12.2K	Top Side	1413	23.50	23.49	1.00	0.02	0.572	0.57
	WCDMA IV	RMC12.2K	Bottom Side	1413	23.50	23.49	1.00	0	<0.001	0.00
04	WCDMA IV	RMC12.2K	Rear Face	1312	23.50	22.42	1.28	-0.08	2.79	3.57
	WCDMA IV	RMC12.2K	Rear Face	1513	23.50	23.45	1.01	-0.01	2.66	2.69
	WCDMA IV	RMC12.2K	Rear Face	1312	23.50	22.42	1.28	-0.04	2.73	3.49
	WCDMA V	RMC12.2K	Front Face	4182	23.50	23.29	1.05	0.05	0.151	0.16
	WCDMA V	RMC12.2K	Rear Face	4182	23.50	23.29	1.05	-0.11	0.285	0.30
	WCDMA V	RMC12.2K	Left Side	4182	23.50	23.29	1.05	0.03	0.131	0.14
	WCDMA V	RMC12.2K	Right Side	4182	23.50	23.29	1.05	-0.06	0.219	0.23
	WCDMA V	RMC12.2K	Top Side	4182	23.50	23.29	1.05	0.12	0.096	0.10
	WCDMA V	RMC12.2K	Bottom Side	4182	23.50	23.29	1.05	0.07	0.029	0.03
05	WCDMA V	RMC12.2K	Rear Face	4132	23.50	23.23	1.06	-0.13	0.305	0.32
	WCDMA V	RMC12.2K	Rear Face	4233	23.50	23.28	1.05	0.11	0.291	0.31

**Note:** The "< 0.001" means there is no SAR value or the SAR is too low to be measured.

# SAR Test Report

Plot No.	Band	Mode	Test Position	Ch.	RB#	RB offset	Max. Tune-up Power (dBm)	Measured Conducted Power (dBm)	Scaling Factor	Power Drift (dB)	Measured SAR-10g (W/kg)	Scaled SAR-10g (W/kg)
	LTE 2	QPSK20M	Front Face	19100	1	50	23.00	22.93	1.02	0.07	0.079	0.08
	LTE 2	QPSK20M	Rear Face	19100	1	50	23.00	22.93	1.02	0.06	2.74	2.79
	LTE 2	QPSK20M	Left Side	19100	1	50	23.00	22.93	1.02	-0.09	0.138	0.14
	LTE 2	QPSK20M	Right Side	19100	1	50	23.00	22.93	1.02	-0.18	0.525	0.54
	LTE 2	QPSK20M	Top Side	19100	1	50	23.00	22.93	1.02	0.06	0.204	0.21
	LTE 2	QPSK20M	Bottom Side	19100	1	50	23.00	22.93	1.02	0	<0.001	0.00
	LTE 2	QPSK20M	Front Face	19100	50	25	22.00	21.81	1.04	-0.06	0.061	0.06
	LTE 2	QPSK20M	Rear Face	19100	50	25	22.00	21.81	1.04	0.14	2.28	2.37
	LTE 2	QPSK20M	Left Side	19100	50	25	22.00	21.81	1.04	-0.07	0.109	0.11
	LTE 2	QPSK20M	Right Side	19100	50	25	22.00	21.81	1.04	-0.08	0.414	0.43
	LTE 2	QPSK20M	Top Side	19100	50	25	22.00	21.81	1.04	0.15	0.147	0.15
	LTE 2	QPSK20M	Bottom Side	19100	50	25	22.00	21.81	1.04	0	<0.001	0.00
	LTE 2	QPSK20M	Bottom Side	19100	100	0	22.00	21.84	1.04	0.10	2.17	2.26
06	LTE 2	QPSK20M	Rear Face	18700	1	50	23.00	22.76	1.06	-0.11	2.90	3.07
	LTE 2	QPSK20M	Rear Face	18900	1	50	23.00	22.60	1.10	-0.03	2.76	3.04
	LTE 2	QPSK20M	Rear Face	18700	50	25	22.00	21.69	1.07	-0.07	1.8	1.93
	LTE 2	QPSK20M	Rear Face	18900	50	25	22.00	21.51	1.12	-0.01	2.29	2.56
	LTE 2	QPSK20M	Rear Face	18700	1	50	23.00	22.76	1.06	0.01	2.83	3.00
	LTE 4	QPSK20M	Front Face	20175	1	50	24.00	23.90	1.02	0.06	0.157	0.16
07	LTE 4	QPSK20M	Rear Face	20175	1	50	24.00	23.90	1.02	-0.03	2.38	2.43
	LTE 4	QPSK20M	Left Side	20175	1	50	24.00	23.90	1.02	0.1	0.179	0.18
	LTE 4	QPSK20M	Right Side	20175	1	50	24.00	23.90	1.02	0.16	0.153	0.16
	LTE 4	QPSK20M	Top Side	20175	1	50	24.00	23.90	1.02	-0.18	0.241	0.25
	LTE 4	QPSK20M	Bottom Side	20175	1	50	24.00	23.90	1.02	0	<0.001	0.00
	LTE 4	QPSK20M	Front Face	20175	50	25	23.00	22.57	1.10	0.02	0.123	0.14
	LTE 4	QPSK20M	Rear Face	20175	50	25	23.00	22.57	1.10	0.15	1.94	2.13
	LTE 4	QPSK20M	Left Side	20175	50	25	23.00	22.57	1.10	0.13	0.135	0.15
	LTE 4	QPSK20M	Right Side	20175	50	25	23.00	22.57	1.10	-0.1	0.141	0.16
	LTE 4	QPSK20M	Top Side	20175	50	25	23.00	22.57	1.10	0.17	0.179	0.20
	LTE 4	QPSK20M	Bottom Side	20175	50	25	23.00	22.57	1.10	0	<0.001	0.00
	LTE 4	QPSK20M	Rear Face	20175	100	0	23.00	22.44	1.14	-0.03	1.71	1.95
	LTE 4	QPSK20M	Rear Face	20050	1	50	24.00	23.65	1.08	-0.01	1.66	1.79
	LTE 4	QPSK20M	Rear Face	20300	1	50	24.00	23.87	1.03	-0.09	2.25	2.32
	LTE 4	QPSK20M	Rear Face	20050	50	25	23.00	22.46	1.13	-0.11	1.39	1.57
	LTE 4	QPSK20M	Rear Face	20300	50	25	23.00	22.47	1.13	0.02	1.35	1.53
	LTE 4	QPSK20M	Rear Face	20175	1	50	24.00	23.90	1.02	-0.03	2.31	2.36
	LTE 5	QPSK10M	Front Face	20525	1	24	24.00	23.77	1.05	0.03	0.143	0.15
	LTE 5	QPSK10M	Rear Face	20525	1	24	24.00	23.77	1.05	-0.08	0.243	0.26
	LTE 5	QPSK10M	Left Side	20525	1	24	24.00	23.77	1.05	0.03	0.143	0.15
08	LTE 5	QPSK10M	Right Side	20525	1	24	24.00	23.77	1.05	0.07	0.337	0.35
	LTE 5	QPSK10M	Top Side	20525	1	24	24.00	23.77	1.05	-0.12	0.121	0.13
	LTE 5	QPSK10M	Bottom Side	20525	1	24	24.00	23.77	1.05	0	<0.001	0.00
	LTE 5	QPSK10M	Front Face	20525	25	12	23.00	22.45	1.14	0.17	0.108	0.12
	LTE 5	QPSK10M	Rear Face	20525	25	12	23.00	22.45	1.14	0.05	0.194	0.22
	LTE 5	QPSK10M	Left Side	20525	25	12	23.00	22.45	1.14	-0.13	0.082	0.09
	LTE 5	QPSK10M	Right Side	20525	25	12	23.00	22.45	1.14	0.07	0.258	0.29
	LTE 5	QPSK10M	Top Side	20525	25	12	23.00	22.45	1.14	0	0.091	0.10
	LTE 5	QPSK10M	Bottom Side	20525	25	12	23.00	22.45	1.14	0	<0.001	0.00
	LTE 5	QPSK10M	Right Side	20450	1	24	24.00	23.68	1.08	0.17	0.308	0.33
	LTE 5	QPSK10M	Right Side	20600	1	24	24.00	23.66	1.08	-0.05	0.321	0.35
	LTE 7	QPSK20M	Front Face	21100	1	50	24.00	23.92	1.02	0.03	0.139	0.14
	LTE 7	QPSK20M	Rear Face	21100	1	50	24.00	23.92	1.02	0.07	3.05	3.11
	LTE 7	QPSK20M	Left Side	21100	1	50	24.00	23.92	1.02	-0.12	0.089	0.09
	LTE 7	QPSK20M	Right Side	21100	1	50	24.00	23.92	1.02	0.05	0.564	0.58
	LTE 7	QPSK20M	Top Side	21100	1	50	24.00	23.92	1.02	0.01	0.199	0.20
	LTE 7	QPSK20M	Bottom Side	21100	1	50	24.00	23.92	1.02	0	<0.001	0.00
	LTE 7	QPSK20M	Front Face	21100	50	25	23.00	22.39	1.15	-0.06	0.116	0.13
	LTE 7	QPSK20M	Rear Face	21100	50	25	23.00	22.39	1.15	0.12	2.52	2.90
	LTE 7	QPSK20M	Left Side	21100	50	25	23.00	22.39	1.15	0.05	0.082	0.09
	LTE 7	QPSK20M	Right Side	21100	50	25	23.00	22.39	1.15	0.07	0.495	0.57
	LTE 7	QPSK20M	Top Side	21100	50	25	23.00	22.39	1.15	0.03	0.178	0.20
	LTE 7	QPSK20M	Bottom Side	21100	50	25	23.00	22.39	1.15	0	<0.001	0.00
	LTE 7	QPSK20M	Rear Face	21100	100	0	23.00	22.46	1.13	-0.13	2.29	2.59
09	LTE 7	QPSK20M	Rear Face	20850	1	50	24.00	23.91	1.02	-0.08	3.51	3.58
	LTE 7	QPSK20M	Rear Face	21350	1	50	24.00	23.64	1.09	0.04	3.19	3.48
	LTE 7	QPSK20M	Rear Face	20850	50	25	23.00	22.38	1.15	-0.16	2.89	3.32
	LTE 7	QPSK20M	Rear Face	21350	50	25	23.00	22.30	1.17	0.17	2.64	3.09
	LTE 7	QPSK20M	Rear Face	20850	1	50	24.00	23.91	1.02	-0.07	3.44	3.51

**Note:** The "< 0.001" means there is no SAR value or the SAR is too low to be measured.

# SAR Test Report

Plot No.	Band	Mode	Test Position	Ch.	RB#	RB offset	Max. Tune-up Power (dBm)	Measured Conducted Power (dBm)	Scaling Factor	Power Drift (dB)	Measured SAR-10g (W/kg)	Scaled SAR-10g (W/kg)	
20	LTE 12	QPSK10M	Front Face	23095	1	24	24.00	23.86	1.03	-0.1	0.22	0.23	
	LTE 12	QPSK10M	Rear Face	23095	1	24	24.00	23.86	1.03	-0.12	0.316	0.33	
	LTE 12	QPSK10M	Left Side	23095	1	24	24.00	23.86	1.03	0.08	0.118	0.12	
	LTE 12	QPSK10M	Right Side	23095	1	24	24.00	23.86	1.03	-0.14	0.177	0.18	
	LTE 12	QPSK10M	Top Side	23095	1	24	24.00	23.86	1.03	-0.16	0.074	0.08	
	LTE 12	QPSK10M	Bottom Side	23095	1	24	24.00	23.86	1.03	0	<0.001	0.00	
	LTE 12	QPSK10M	Front Face	23095	25	12	23.00	22.83	1.04	0.19	0.173	0.18	
	LTE 12	QPSK10M	Rear Face	23095	25	12	23.00	22.83	1.04	0.15	0.262	0.27	
	LTE 12	QPSK10M	Left Side	23095	25	12	23.00	22.83	1.04	0.06	0.103	0.11	
	LTE 12	QPSK10M	Right Side	23095	25	12	23.00	22.83	1.04	-0.03	0.198	0.21	
	LTE 12	QPSK10M	Top Side	23095	25	12	23.00	22.83	1.04	-0.16	0.062	0.06	
	LTE 12	QPSK10M	Bottom Side	23095	25	12	23.00	22.83	1.04	0	<0.001	0.00	
	LTE 12	QPSK10M	Rear Face	23060	1	24	24.00	23.79	1.05	0.03	0.312	0.33	
	LTE 12	QPSK10M	Rear Face	23130	1	24	24.00	23.81	1.04	-0.05	0.309	0.32	
21	LTE 13	QPSK10M	Front Face	23230	1	24	24.00	23.97	1.01	0.07	0.113	0.11	
	LTE 13	QPSK10M	Rear Face	23230	1	24	24.00	23.97	1.01	-0.12	0.286	0.29	
	LTE 13	QPSK10M	Left Side	23230	1	24	24.00	23.97	1.01	0.19	0.148	0.15	
	LTE 13	QPSK10M	Right Side	23230	1	24	24.00	23.97	1.01	-0.03	0.247	0.25	
	LTE 13	QPSK10M	Top Side	23230	1	24	24.00	23.97	1.01	-0.18	0.076	0.08	
	LTE 13	QPSK10M	Bottom Side	23230	1	24	24.00	23.97	1.01	0	<0.001	0.00	
	LTE 13	QPSK10M	Front Face	23230	25	12	23.00	22.68	1.08	0.17	0.083	0.09	
	LTE 13	QPSK10M	Rear Face	23230	25	12	23.00	22.68	1.08	0.12	0.221	0.24	
	LTE 13	QPSK10M	Left Side	23230	25	12	23.00	22.68	1.08	0.05	0.135	0.15	
	LTE 13	QPSK10M	Right Side	23230	25	12	23.00	22.68	1.08	0.06	0.187	0.20	
	LTE 13	QPSK10M	Top Side	23230	25	12	23.00	22.68	1.08	0.12	0.06	0.06	
	LTE 13	QPSK10M	Bottom Side	23230	25	12	23.00	22.68	1.08	0	<0.001	0.00	
	10	LTE 25	QPSK20M	Front Face	26365	1	50	23.50	23.49	1.00	0.01	0.102	0.10
		LTE 25	QPSK20M	Rear Face	26365	1	50	23.50	23.49	1.00	-0.01	3.58	3.58
LTE 25		QPSK20M	Left Side	26365	1	50	23.50	23.49	1.00	0.12	0.169	0.17	
LTE 25		QPSK20M	Right Side	26365	1	50	23.50	23.49	1.00	-0.12	0.691	0.69	
LTE 25		QPSK20M	Top Side	26365	1	50	23.50	23.49	1.00	0.18	0.134	0.13	
LTE 25		QPSK20M	Bottom Side	26365	1	50	23.50	23.49	1.00	0	<0.001	0.00	
LTE 25		QPSK20M	Front Face	26365	50	0	22.50	22.06	1.11	0.13	0.074	0.08	
LTE 25		QPSK20M	Rear Face	26365	50	0	22.50	22.06	1.11	0.11	2.95	3.27	
LTE 25		QPSK20M	Left Side	26365	50	0	22.50	22.06	1.11	0.16	0.137	0.15	
LTE 25		QPSK20M	Right Side	26365	50	0	22.50	22.06	1.11	-0.14	0.531	0.59	
LTE 25		QPSK20M	Top Side	26365	50	0	22.50	22.06	1.11	0.03	0.134	0.15	
LTE 25		QPSK20M	Bottom Side	26365	50	0	22.50	22.06	1.11	0	<0.001	0.00	
LTE 25		QPSK20M	Rear Face	26365	100	0	22.50	21.89	1.15	0.03	3.02	3.47	
LTE 25		QPSK20M	Rear Face	26140	1	50	23.50	23.48	1.00	-0.1	3.27	3.27	
LTE 25		QPSK20M	Rear Face	26590	1	50	23.50	23.47	1.01	0.06	2.65	2.68	
LTE 25		QPSK20M	Rear Face	26140	50	0	22.50	22.04	1.11	-0.09	3.17	3.52	
LTE 25		QPSK20M	Rear Face	26590	50	0	22.50	22.01	1.12	-0.09	2.17	2.43	
LTE 25		QPSK20M	Rear Face	26365	1	50	23.50	23.49	1.00	-0.04	3.52	3.52	
11	LTE 26	QPSK15M	Front Face	26865	1	37	23.50	23.48	1.00	-0.14	0.138	0.14	
	LTE 26	QPSK15M	Rear Face	26865	1	37	23.50	23.48	1.00	-0.04	0.256	0.26	
	LTE 26	QPSK15M	Left Side	26865	1	37	23.50	23.48	1.00	0.06	0.141	0.14	
	LTE 26	QPSK15M	Right Side	26865	1	37	23.50	23.48	1.00	0.05	0.322	0.32	
	LTE 26	QPSK15M	Top Side	26865	1	37	23.50	23.48	1.00	-0.16	0.095	0.10	
	LTE 26	QPSK15M	Bottom Side	26865	1	37	23.50	23.48	1.00	0	<0.001	0.00	
	LTE 26	QPSK15M	Front Face	26865	36	19	22.50	22.49	1.00	0.17	0.117	0.12	
	LTE 26	QPSK15M	Rear Face	26865	36	19	22.50	22.49	1.00	-0.14	0.207	0.21	
	LTE 26	QPSK15M	Left Side	26865	36	19	22.50	22.49	1.00	0.14	0.117	0.12	
	LTE 26	QPSK15M	Right Side	26865	36	19	22.50	22.49	1.00	-0.1	0.256	0.26	
	LTE 26	QPSK15M	Top Side	26865	36	19	22.50	22.49	1.00	-0.09	0.067	0.07	
	LTE 26	QPSK15M	Bottom Side	26865	36	19	22.50	22.49	1.00	0	<0.001	0.00	
	LTE 26	QPSK15M	Right Side	26765	1	37	23.50	23.35	1.04	-0.07	0.238	0.25	
	LTE 26	QPSK15M	Right Side	26965	1	37	23.50	23.45	1.01	-0.01	0.384	0.39	

Note: The "< 0.001" means there is no SAR value or the SAR is too low to be measured.

# SAR Test Report

Plot No.	Band	Mode	Test Position	Ch.	RB#	RB offset	Max. Tune-up Power (dBm)	Measured Conducted Power (dBm)	Scaling Factor	Power Drift (dB)	Measured SAR-10g (W/kg)	Scaled SAR-10g (W/kg)
	LTE 38	QPSK20M	Front Face	38150	1	50	24.50	24.46	1.01	-0.05	0.107	0.11
12	LTE 38	QPSK20M	Rear Face	38150	1	50	24.50	24.46	1.01	0.1	1.37	1.38
	LTE 38	QPSK20M	Left Side	38150	1	50	24.50	24.46	1.01	-0.04	0.046	0.05
	LTE 38	QPSK20M	Right Side	38150	1	50	24.50	24.46	1.01	-0.13	0.348	0.35
	LTE 38	QPSK20M	Top Side	38150	1	50	24.50	24.46	1.01	0.03	0.096	0.10
	LTE 38	QPSK20M	Bottom Side	38150	1	50	24.50	24.46	1.01	-0.03	<0.001	0.00
	LTE 38	QPSK20M	Front Face	38150	50	25	23.50	23.43	1.02	-0.04	0.088	0.09
	LTE 38	QPSK20M	Rear Face	38150	50	25	23.50	23.43	1.02	0.03	1.21	1.23
	LTE 38	QPSK20M	Left Side	38150	50	25	23.50	23.43	1.02	0.1	0.043	0.04
	LTE 38	QPSK20M	Right Side	38150	50	25	23.50	23.43	1.02	-0.04	0.323	0.33
	LTE 38	QPSK20M	Top Side	38150	50	25	23.50	23.43	1.02	-0.17	0.069	0.07
	LTE 38	QPSK20M	Bottom Side	38150	50	25	23.50	23.43	1.02	-0.02	<0.001	0.00
	LTE 38	QPSK20M	Rear Face	37850	1	50	24.50	24.41	1.02	-0.18	1.14	1.16
	LTE 38	QPSK20M	Rear Face	38000	1	50	24.50	24.38	1.03	0.05	1.21	1.25
	LTE 41	QPSK20M	Front Face	40185	1	50	24.00	23.98	1.00	0.05	0.064	0.06
	LTE 41	QPSK20M	Rear Face	40185	1	50	24.00	23.98	1.00	0.08	1.29	1.29
	LTE 41	QPSK20M	Left Side	40185	1	50	24.00	23.98	1.00	0.03	0.039	0.04
	LTE 41	QPSK20M	Right Side	40185	1	50	24.00	23.98	1.00	0.01	0.265	0.27
	LTE 41	QPSK20M	Top Side	40185	1	50	24.00	23.98	1.00	0.17	0.119	0.12
	LTE 41	QPSK20M	Bottom Side	40185	1	50	24.00	23.98	1.00	0	<0.001	0.00
	LTE 41	QPSK20M	Front Face	40185	50	25	23.00	22.97	1.01	-0.11	0.069	0.07
	LTE 41	QPSK20M	Rear Face	40185	50	25	23.00	22.97	1.01	0.18	1.23	1.24
	LTE 41	QPSK20M	Left Side	40185	50	25	23.00	22.97	1.01	0.13	0.044	0.04
	LTE 41	QPSK20M	Right Side	40185	50	25	23.00	22.97	1.01	0.1	0.253	0.26
	LTE 41	QPSK20M	Top Side	40185	50	25	23.00	22.97	1.01	-0.04	0.107	0.11
	LTE 41	QPSK20M	Bottom Side	40185	50	25	23.00	22.97	1.01	0	<0.001	0.00
	LTE 41	QPSK20M	Rear Face	39750	1	50	24.00	23.83	1.04	-0.19	1.05	1.09
	LTE 41	QPSK20M	Rear Face	40620	1	50	24.00	23.97	1.01	0.18	1.25	1.26
14	LTE 41	QPSK20M	Rear Face	41055	1	50	24.00	23.94	1.01	0.18	1.45	1.46
	LTE 41	QPSK20M	Rear Face	41490	1	50	24.00	23.93	1.02	0.05	1.19	1.21

Note: The "< 0.001" means there is no SAR value or the SAR is too low to be measured.



# SAR Test Report

Plot No.	Band	Mode	Test Position	Ch.	Duty Cycle	Crest Factor	Max. Tune-up Power (dBm)	Measured Conducted Power (dBm)	Scaling Factor	Power Drift (dB)	Measured SAR-10g (W/kg)	Scaled SAR-10g (W/kg)
	WLAN2.4G	802.11b	Front Face	6	100.00	1.00	17.00	16.96	1.01	-0.14	0.039	0.04
	WLAN2.4G	802.11b	Rear Face	6	100.00	1.00	17.00	16.96	1.01	-0.04	0.14	0.14
15	WLAN2.4G	802.11b	Left Side	6	100.00	1.00	17.00	16.96	1.01	-0.09	0.302	0.31
	WLAN2.4G	802.11b	Right Side	6	100.00	1.00	17.00	16.96	1.01	0.03	0.038	0.04
	WLAN2.4G	802.11b	Top Side	6	100.00	1.00	17.00	16.96	1.01	0	<0.001	0.00
	WLAN2.4G	802.11b	Bottom Side	6	100.00	1.00	17.00	16.96	1.01	0.04	0.134	0.14
	WLAN2.4G	802.11b	Left Side	1	100.00	1.00	17.00	16.91	1.02	0.15	0.278	0.28
	WLAN2.4G	802.11b	Left Side	11	100.00	1.00	17.00	16.88	1.03	-0.08	0.286	0.29
	WLAN5.3G	802.11a	Front Face	64	91.80	1.09	14.00	13.93	1.02	-0.01	0.028	0.03
	WLAN5.3G	802.11a	Rear Face	64	91.80	1.09	14.00	13.93	1.02	-0.01	0.215	0.24
	WLAN5.3G	802.11a	Left Side	64	91.80	1.09	14.00	13.93	1.02	0.01	0.062	0.07
	WLAN5.3G	802.11a	Right Side	64	91.80	1.09	14.00	13.93	1.02	0.14	0.02	0.02
	WLAN5.3G	802.11a	Top Side	64	91.80	1.09	14.00	13.93	1.02	0	<0.001	0.00
	WLAN5.3G	802.11a	Bottom Side	64	91.80	1.09	14.00	13.93	1.02	0.03	0.277	0.31
16	WLAN5.3G	802.11a	Bottom Side	52	91.80	1.09	14.00	13.77	1.05	0.13	0.293	0.34
	WLAN5.3G	802.11a	Bottom Side	56	91.80	1.09	14.00	13.70	1.07	-0.08	0.273	0.32
	WLAN5.3G	802.11a	Bottom Side	60	91.80	1.09	14.00	13.92	1.02	0.02	0.282	0.31
	WLAN5.6G	802.11a	Front Face	100	91.80	1.09	14.50	14.11	1.09	-0.05	0.026	0.03
	WLAN5.6G	802.11a	Rear Face	100	91.80	1.09	14.50	14.11	1.09	-0.09	0.254	0.30
	WLAN5.6G	802.11a	Left Side	100	91.80	1.09	14.50	14.11	1.09	0.11	0.062	0.07
	WLAN5.6G	802.11a	Right Side	100	91.80	1.09	14.50	14.11	1.09	-0.12	0.021	0.02
	WLAN5.6G	802.11a	Top Side	100	91.80	1.09	14.50	14.11	1.09	0	<0.001	0.00
17	WLAN5.6G	802.11a	Bottom Side	100	91.80	1.09	14.50	14.11	1.09	0.07	0.312	0.37
	WLAN5.6G	802.11a	Bottom Side	116	91.80	1.09	14.50	13.85	1.16	0.18	0.286	0.36
	WLAN5.6G	802.11a	Bottom Side	120	91.80	1.09	14.50	13.82	1.17	0.15	0.288	0.37
	WLAN5.6G	802.11a	Bottom Side	124	91.80	1.09	14.50	13.80	1.17	-0.08	0.241	0.31
	WLAN5.6G	802.11a	Bottom Side	132	91.80	1.09	14.50	13.68	1.21	-0.06	0.226	0.30
	WLAN5.6G	802.11a	Bottom Side	140	91.80	1.09	14.50	13.86	1.16	-0.04	0.279	0.35
	WLAN5.8G	802.11a	Front Face	149	91.80	1.09	14.00	13.87	1.03	0.17	0.026	0.03
18	WLAN5.8G	802.11a	Rear Face	149	91.80	1.09	14.00	13.87	1.03	-0.13	0.337	0.38
	WLAN5.8G	802.11a	Left Side	149	91.80	1.09	14.00	13.87	1.03	0.16	0.068	0.08
	WLAN5.8G	802.11a	Right Side	149	91.80	1.09	14.00	13.87	1.03	-0.19	0.024	0.03
	WLAN5.8G	802.11a	Top Side	149	91.80	1.09	14.00	13.87	1.03	0.1	<0.001	0.00
	WLAN5.8G	802.11a	Bottom Side	149	91.80	1.09	14.00	13.87	1.03	0.14	0.319	0.36
	WLAN5.8G	802.11a	Rear Face	153	91.80	1.09	14.00	13.76	1.06	-0.18	0.301	0.35
	WLAN5.8G	802.11a	Rear Face	157	91.80	1.09	14.00	13.85	1.04	0.12	0.287	0.33
	WLAN5.8G	802.11a	Rear Face	161	91.80	1.09	14.00	13.70	1.07	0.02	0.283	0.33
	WLAN5.8G	802.11a	Rear Face	165	91.80	1.09	14.00	13.82	1.04	-0.15	0.296	0.34
	BT	BDR	Front Face	0	76.40	1.31	9.00	8.98	1.00	0	<0.001	0.00
	BT	BDR	Rear Face	0	76.40	1.31	9.00	8.98	1.00	0	<0.001	0.00
	BT	BDR	Left Side	0	76.40	1.31	9.00	8.98	1.00	0	<0.001	0.00
	BT	BDR	Right Side	0	76.40	1.31	9.00	8.98	1.00	0	<0.001	0.00
	BT	BDR	Top Side	0	76.40	1.31	9.00	8.98	1.00	0	<0.001	0.00
	BT	BDR	Bottom Side	0	76.40	1.31	9.00	8.98	1.00	0	<0.001	0.00
	BT	BDR	Left Side	39	76.40	1.31	9.00	8.30	1.17	0	<0.001	0.00
	BT	BDR	Left Side	78	76.40	1.31	8.00	6.18	1.52	0	<0.001	0.00

**Note:** The "< 0.001" means there is no SAR value or the SAR is too low to be measured.

### 4.7.3 SAR Measurement Variability

According to KDB 865664 D01, SAR measurement variability was assessed for each frequency band, which is determined by the SAR probe calibration point and tissue-equivalent medium used for the device measurements. When both head and body tissue-equivalent media are required for SAR measurements in a frequency band, the variability measurement procedures should be applied to the tissue medium with the highest measured SAR, using the highest measured SAR configuration for that tissue-equivalent medium. Alternatively, if the highest measured SAR for both head and body tissue-equivalent media are  $\leq 1.45$  W/kg and the ratio of these highest SAR values, i.e., largest divided by smallest value, is  $\leq 1.10$ , the highest SAR configuration for either head or body tissue-equivalent medium maybe used to perform the repeated measurement. These additional measurements are repeated after the completion of all measurements requiring the same head or body tissue-equivalent medium in a frequency band. The test device should be returned to ambient conditions (normal room temperature) with the battery fully charged before it is re-mounted on the device holder for the repeated measurement(s) to minimize any unexpected variations in the repeated results.

SAR repeated measurement procedure:

1. When the highest measured SAR is  $< 0.80$  W/kg, repeated measurement is not required.
2. When the highest measured SAR is  $\geq 0.80$  W/kg, repeat that measurement once.
3. If the ratio of largest to smallest SAR for the original and first repeated measurements is  $> 1.20$ , or when the original or repeated measurement is  $\geq 1.45$  W/kg, perform a second repeated measurement.
4. If the ratio of largest to smallest SAR for the original, first and second repeated measurements is  $> 1.20$ , and the original, first or second repeated measurement is  $\geq 1.5$  W/kg, perform a third repeated measurement.
5. The same procedures should be adapted for measurements according to extremity and occupational exposure limits by applying a factor of 2.5 for extremity exposure and a factor of 5 for occupational exposure to the corresponding SAR thresholds.

Band	Mode	Test Position	Ch.	Original Measured SAR-10g (W/kg)	1st Repeated SAR-10g (W/kg)	L/S Ratio
GSM1900	GPRS11	Rear Face	810	2.96	2.88	1.03
WCDMA II	RMC12.2K	Rear Face	9262	2.49	2.38	1.05
WCDMA IV	RMC12.2K	Rear Face	1312	2.79	2.73	1.02
LTE 2	QPSK20M	Rear Face	18700	2.9	2.83	1.02
LTE 4	QPSK20M	Rear Face	20175	2.38	2.31	1.03
LTE 7	RMC12.2K	Rear Face	20850	3.51	3.44	1.02
LTE 25	RMC12.2K	Rear Face	26365	3.58	3.52	1.02

## SAR Test Report

### 4.7.4 Simultaneous Multi-band Transmission Evaluation

#### <Possibilities of Simultaneous Transmission>

The simultaneous transmission possibilities for this device are listed as below.

Simultaneous TX Combination	Capable Transmit Configurations	Extremity Exposure Condition
1	WWAN + WLAN2.4G	Yes
2	WWAN + WLAN5G	Yes
3	WWAN + BT	Yes

#### Note :

1. The WLAN 2.4G and WLAN 5G cannot transmit simultaneously.
2. The WLAN and Bluetooth cannot transmit simultaneously.

#### <SAR Summation Analysis>

Simultaneous transmission SAR test exclusion is determined for each operating configuration and exposure condition according to the reported standalone SAR of each applicable simultaneous transmitting antenna. When the sum of SAR<sub>1g</sub> of all simultaneously transmitting antennas in an operating mode and exposure condition combination is within the SAR limit(SAR<sub>1g</sub> 1.6 W/kg), the simultaneous transmission SAR is not required. When the sum of SAR<sub>1g</sub> is greater than the SAR limit (SAR<sub>1g</sub> 1.6 W/kg), SAR test exclusion is determined by the SPLSR.

Refer to Appendix G

**Test Engineer :** James Chu, and Chienlun Huang

**5. Calibration of Test Equipment**

Equipment	Manufacturer	Model	SN	Cal. Date	Cal. Interval
System Validation Dipole	SPEAG	D750V3	1013	Aug. 13, 2020	1 Year
System Validation Dipole	SPEAG	D835V2	4d121	Aug. 13, 2020	1 Year
System Validation Dipole	SPEAG	D1750V2	1055	Aug. 14, 2020	1 Year
System Validation Dipole	SPEAG	D1900V2	5d036	Jan. 21, 2020	1 Year
System Validation Dipole	SPEAG	D2300V2	1004	Jan. 21, 2020	1 Year
System Validation Dipole	SPEAG	D2450V2	737	Aug. 13, 2020	1 Year
System Validation Dipole	SPEAG	D2600V2	1020	Aug. 13, 2020	1 Year
System Validation Dipole	SPEAG	D5GHzV2	1019	Mar. 13, 2020	1 Year
Dosimetric E-Field Probe	SPEAG	EX3DV4	3650	Mar. 25, 2020	1 Year
Dosimetric E-Field Probe	SPEAG	EX3DV4	3820	Jun. 25, 2020	1 Year
Dosimetric E-Field Probe	SPEAG	EX3DV4	7537	May. 29, 2020	1 Year
Dosimetric E-Field Probe	SPEAG	EX3DV4	7554	Sep. 28, 2020	1 Year
Dosimetric E-Field Probe	SPEAG	EX3DV4	7555	Sep. 28, 2020	1 Year
Data Acquisition Electronics	SPEAG	DAE4	861	May. 27, 2020	1 Year
Data Acquisition Electronics	SPEAG	DAE4	1431	Mar. 18, 2020	1 Year
Data Acquisition Electronics	SPEAG	DAE4	1277	Jan. 24, 2020	1 Year
Data Acquisition Electronics	SPEAG	DAE4	1589	Sep. 15, 2020	1 Year
Data Acquisition Electronics	SPEAG	DAE4	1590	Sep. 15, 2020	1 Year
Spectrum Analyzer	R&S	FSL6	102006	Mar. 26, 2020	1 Year
Universal Wireless Test Set	Anritsu	MT8870A/MU8 87000A	6201699387	Sep. 28, 2020	1 Year
Thermometer	YFE	YF-160A	150601220	May. 25, 2020	1 Year
Dielectric Assessment Kit	SPEAG	DAKS-3.5	1092	May. 26, 2020	1 Year
Powersource1	SPEAG	SE_UMS_160 BA	4010	Aug. 13, 2020	1 Year

### 6. Measurement Uncertainty

According to KDB 865664 D01, SAR measurement uncertainty analysis is required in SAR reports only when the highest measured SAR in a frequency band is  $\geq 1.5$  W/kg for 1-g SAR, and  $\geq 3.75$  W/kg for 10-g SAR. The procedures described in IEEE Std 1528-2013 should be applied. The expanded SAR measurement uncertainty must be  $\leq 30\%$ , for a confidence interval of  $k = 2$ . When the highest measured SAR within a frequency band is  $< 1.5$  W/kg for 1-g and  $< 3.75$  W/kg for 10-g, the extensive SAR measurement uncertainty analysis described in IEEE Std 1528-2013 is not required in SAR reports submitted for equipment approval. Hence, the measurement uncertainty analysis is not required in this SAR report because the test result met the condition.

### 7. Information of the Testing Laboratories

We, Bureau Veritas Consumer Products Services (H.K.) Ltd., Taoyuan Branch, were founded in 1988 to provide our best service in EMC, Radio, Telecom and Safety consultation. Our laboratories are accredited and approved according to ISO/IEC 17025.

If you have any comments, please feel free to contact us at the following:

**Taiwan Huaya Lab:**

Add: No. 19, Huaya 2nd Rd., Guishan Dist., Taoyuan City 333, Taiwan

Tel: +886-(0)3-318-3232

Fax: +886-(0)3-211-5834

**Taiwan Linkou Lab:**

Add: No. 47-2, Baodoucuokeng, Linkou Dist., New Taipei City 244, Taiwan

Tel: +886-(0)2-2605-2180

Fax: +886-(0)2-2605-2943

**Taiwan Hsinchu Lab1:**

Add: E-2, No. 1, Lixing 1st Rd., East Dist., Hsinchu City 300, Taiwan

Tel: +886-(0)3-666-8565

Fax: +886-(0)3-666-8323

**Taiwan Hsinchu Lab2:**

Add: No. 49, Ln. 206, Wende Rd., Qionglin Township, Hsinchu County 307, Taiwan

Tel: +886-(0)3-512-0595

Fax: +886-(0)3-512-0568

**Taiwan Xindian Lab:**

Add: B2F., No. 215, Sec. 3, Beixin Rd., Xindian Dist., New Taipei City 231, Taiwan

Tel: +886-(0)2-8914-5882

Fax: +886-(0)2-8914-5840

**Email:** [service.adt@tw.bureauveritas.com](mailto:service.adt@tw.bureauveritas.com)

**Web Site:** <https://ee.bureauveritas.com.tw/BVInternet/Default>

The road map of all our labs can be found in our web site also.

---END---

## Appendix A. SAR Plots of System Verification

The plots for system verification with largest deviation for each SAR system combination are shown as follows.



## System Check\_H750\_201203

**DUT: Dipole 750 MHz; Type: D750V3; SN: 1013**

Communication System: UID 0, CW; Frequency: 750 MHz; Duty Cycle: 1:1

Medium: H06T09N2\_1203 Medium parameters used:  $f = 750$  MHz;  $\sigma = 0.928$  S/m;  $\epsilon_r = 43.42$ ;  $\rho = 1000$  kg/m<sup>3</sup>

Ambient Temperature : 23.6 °C ; Liquid Temperature : 23.2 °C

DASY5 Configuration:

- Probe: EX3DV4 - SN7554; ConvF(10.39, 10.39, 10.39) @ 750 MHz; Calibrated: 2020/09/28
- Sensor-Surface: 1.4mm (Mechanical Surface Detection)
- Electronics: DAE4 Sn1590; Calibrated: 2020/09/15
- Phantom: Twin SAM Phantom\_1986; Type: QD 000 P40 CD;
- Measurement SW: DASY52, Version 52.10 (4); SEMCAD X Version 14.6.14 (7483)

**Pin=50mW/Area Scan (61x81x1):** Interpolated grid: dx=1.500 mm, dy=1.500 mm

Maximum value of SAR (interpolated) = 0.587 W/kg

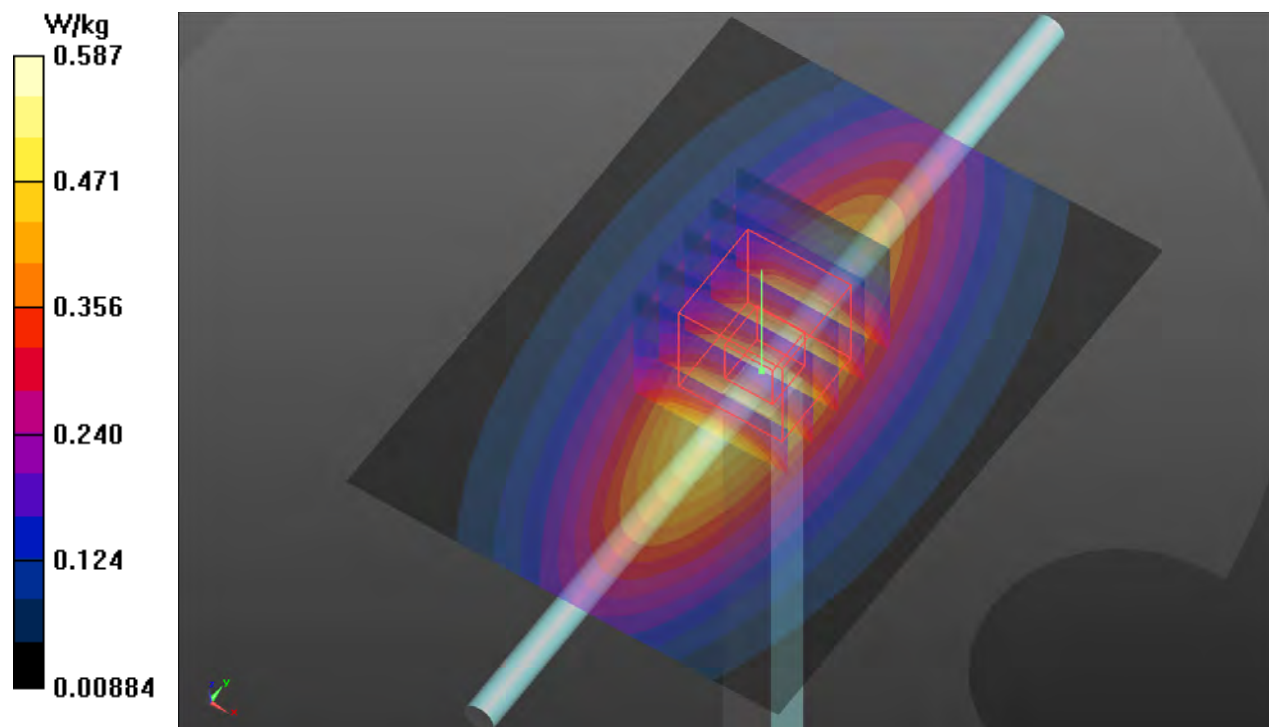
**Pin=50mW/Zoom Scan (5x5x7)/Cube 0:** Measurement grid: dx=8mm, dy=8mm, dz=5mm

Reference Value = 25.54 V/m; Power Drift = -0.07 dB

Peak SAR (extrapolated) = 0.678 W/kg

**SAR(1 g) = 0.418 W/kg; SAR(10 g) = 0.277 W/kg** (SAR corrected for target medium)

Maximum value of SAR (measured) = 0.585 W/kg



## System Check\_H835\_201203

**DUT: Dipole 835 MHz; Type: D835V2; SN: 4d121**

Communication System: UID 0, CW; Frequency: 835 MHz; Duty Cycle: 1:1

Medium: H07T10N1\_1203 Medium parameters used:  $f = 835$  MHz;  $\sigma = 0.908$  S/m;  $\epsilon_r = 42.687$ ;  $\rho = 1000$  kg/m<sup>3</sup>

Ambient Temperature : 23.6 °C ; Liquid Temperature : 23.2 °C

DASY5 Configuration:

- Probe: EX3DV4 - SN7554; ConvF(10.05, 10.05, 10.05) @ 835 MHz; Calibrated: 2020/09/28
- Sensor-Surface: 1.4mm (Mechanical Surface Detection)
- Electronics: DAE4 Sn1590; Calibrated: 2020/09/15
- Phantom: Twin SAM Phantom\_1986; Type: QD 000 P40 CD;
- Measurement SW: DASY52, Version 52.10 (4); SEMCAD X Version 14.6.14 (7483)

**Pin=50mW/Area Scan (61x61x1):** Interpolated grid: dx=1.500 mm, dy=1.500 mm

Maximum value of SAR (interpolated) = 0.680 W/kg

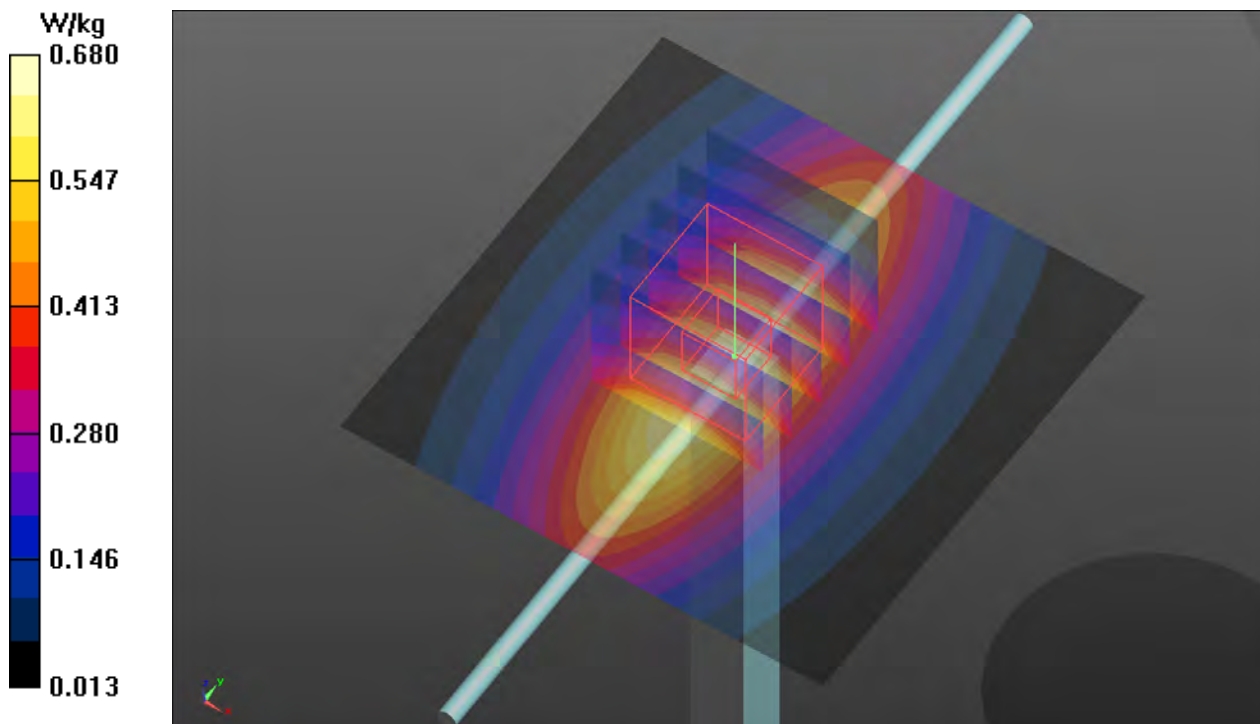
**Pin=50mW/Zoom Scan (5x5x7)/Cube 0:** Measurement grid: dx=8mm, dy=8mm, dz=5mm

Reference Value = 28.10 V/m; Power Drift = 0.01 dB

Peak SAR (extrapolated) = 0.762 W/kg

**SAR(1 g) = 0.507 W/kg; SAR(10 g) = 0.332 W/kg** (SAR corrected for target medium)

Maximum value of SAR (measured) = 0.675 W/kg



## System Check\_H1750\_201208

**DUT: Dipole 1750 MHz; Type: D1750V2; SN: 1055**

Communication System: UID 0, CW; Frequency: 1750 MHz; Duty Cycle: 1:1

Medium: H16T20N1\_1208 Medium parameters used:  $f = 1750$  MHz;  $\sigma = 1.328$  S/m;  $\epsilon_r = 39.799$ ;  $\rho = 1000$  kg/m<sup>3</sup>

Ambient Temperature : 23.5 °C; Liquid Temperature : 23.1 °C

DASY5 Configuration:

- Probe: EX3DV4 - SN7555; ConvF(8.6, 8.6, 8.6) @ 1750 MHz; Calibrated: 2020/09/28
- Sensor-Surface: 1.4mm (Mechanical Surface Detection)
- Electronics: DAE4 Sn1589; Calibrated: 2020/09/15
- Phantom: SAM Phantom\_1987; Type: QD 000 P41 AA;
- Measurement SW: DASY52, Version 52.10 (4); SEMCAD X Version 14.6.14 (7483)

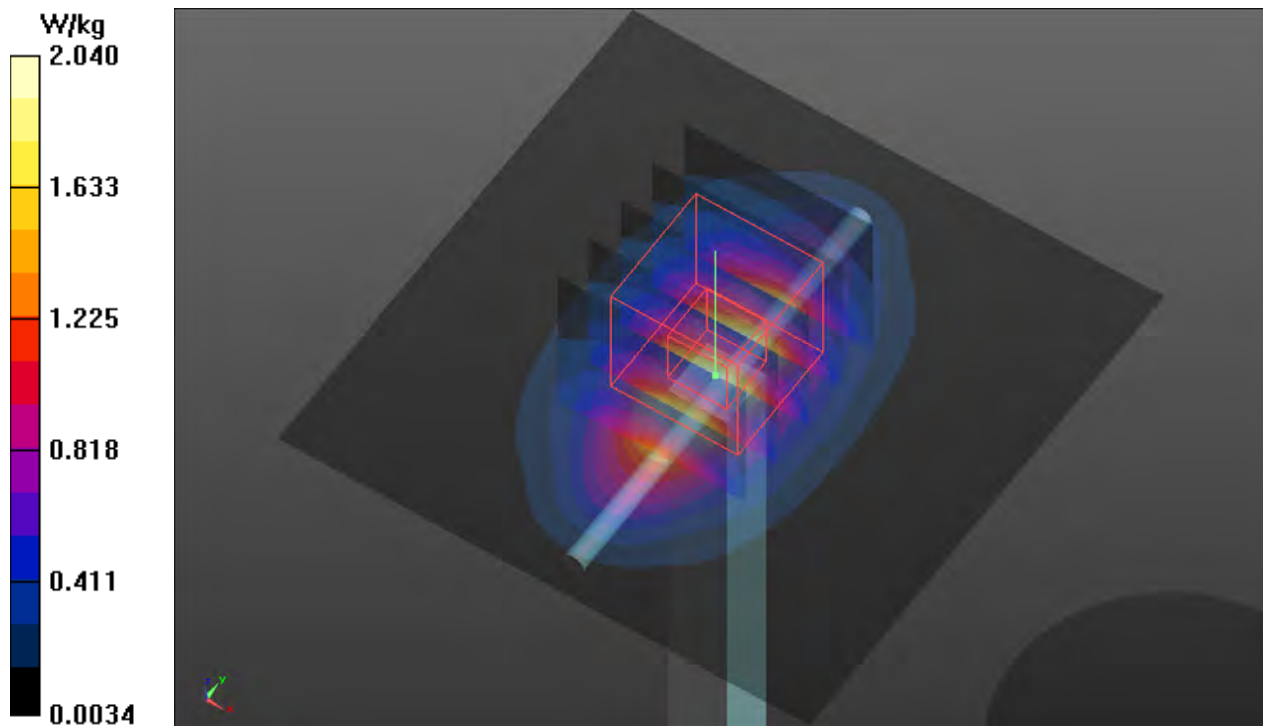
**Pin=50mW/Area Scan (61x61x1):** Interpolated grid: dx=1.500 mm, dy=1.500 mm  
Maximum value of SAR (interpolated) = 2.04 W/kg

**Pin=50mW/Zoom Scan (5x5x7)/Cube 0:** Measurement grid: dx=8mm, dy=8mm, dz=5mm  
Reference Value = 40.84 V/m; Power Drift = -0.01 dB

Peak SAR (extrapolated) = 2.40 W/kg

**SAR(1 g) = 1.81 W/kg; SAR(10 g) = 0.934 W/kg** (SAR corrected for target medium)

Maximum value of SAR (measured) = 2.04 W/kg



## System Check\_H1900\_201211

**DUT: Dipole 1900 MHz; Type: D1900V2; SN: 5d036**

Communication System: UID 0, CW; Frequency: 1900 MHz; Duty Cycle: 1:1

Medium: H16T20N1\_1211 Medium parameters used:  $f = 1900$  MHz;  $\sigma = 1.456$  S/m;  $\epsilon_r = 39.288$ ;  $\rho = 1000$  kg/m<sup>3</sup>

Ambient Temperature : 23.6 °C; Liquid Temperature : 23.2 °C

DASY5 Configuration:

- Probe: EX3DV4 - SN3650; ConvF(8.23, 8.23, 8.23) @ 1900 MHz; Calibrated: 2020/03/25
- Sensor-Surface: 1.4mm (Mechanical Surface Detection)
- Electronics: DAE4 Sn861; Calibrated: 2020/05/27
- Phantom: Twin-SAM V8.0\_1988; Type: QD 000 P41 AA;
- Measurement SW: DASY52, Version 52.10 (4); SEMCAD X Version 14.6.14 (7483)

**Pin=50mW/Area Scan (61x61x1):** Interpolated grid: dx=1.500 mm, dy=1.500 mm

Maximum value of SAR (interpolated) = 3.13 W/kg

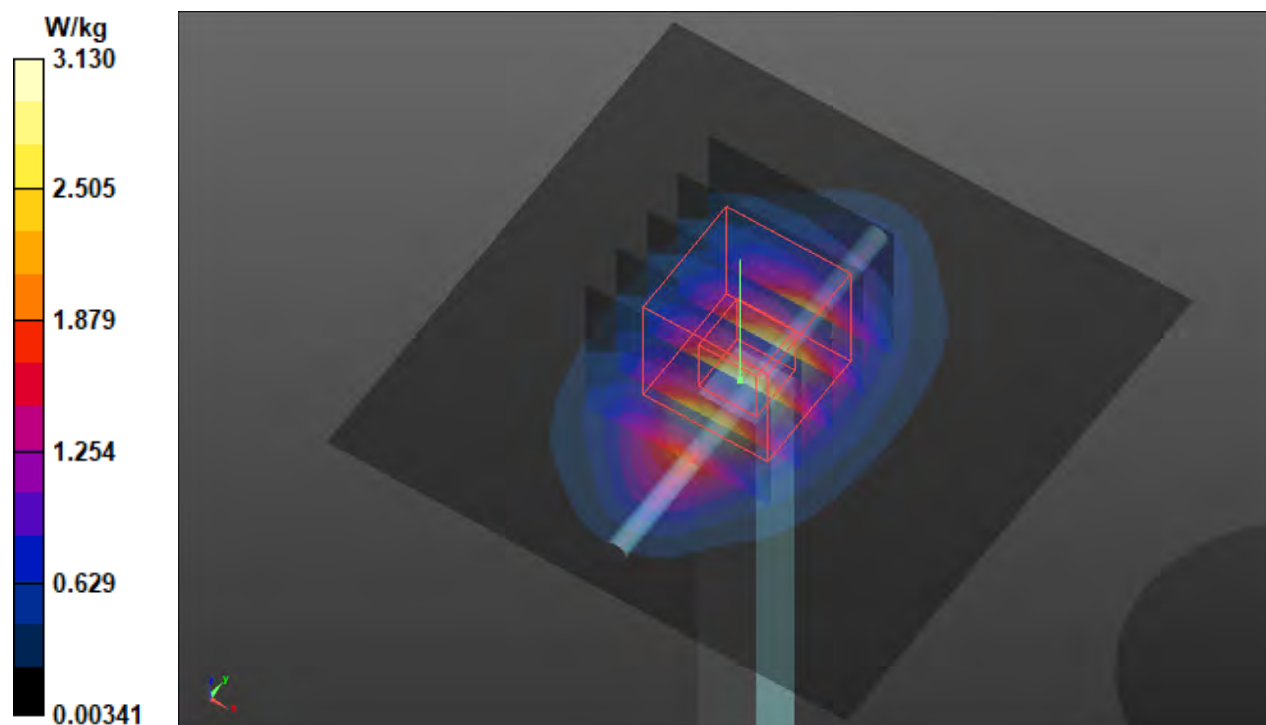
**Pin=50mW/Zoom Scan (5x5x7)/Cube 0:** Measurement grid: dx=8mm, dy=8mm, dz=5mm

Reference Value = 47.86 V/m; Power Drift = 0.04 dB

Peak SAR (extrapolated) = 3.75 W/kg

**SAR(1 g) = 2.01 W/kg; SAR(10 g) = 1.07 W/kg** (SAR corrected for target medium)

Maximum value of SAR (measured) = 3.16 W/kg



## System Check\_H2300\_201205

**DUT: Dipole 2300 MHz; Type: D2300V2; SN:1004**

Communication System: UID 0, CW; Frequency: 2300 MHz; Duty Cycle: 1:1

Medium: H19T27N1\_1205 Medium parameters used:  $f = 2300$  MHz;  $\sigma = 1.724$  S/m;  $\epsilon_r = 39.637$ ;  $\rho = 1000$  kg/m<sup>3</sup>

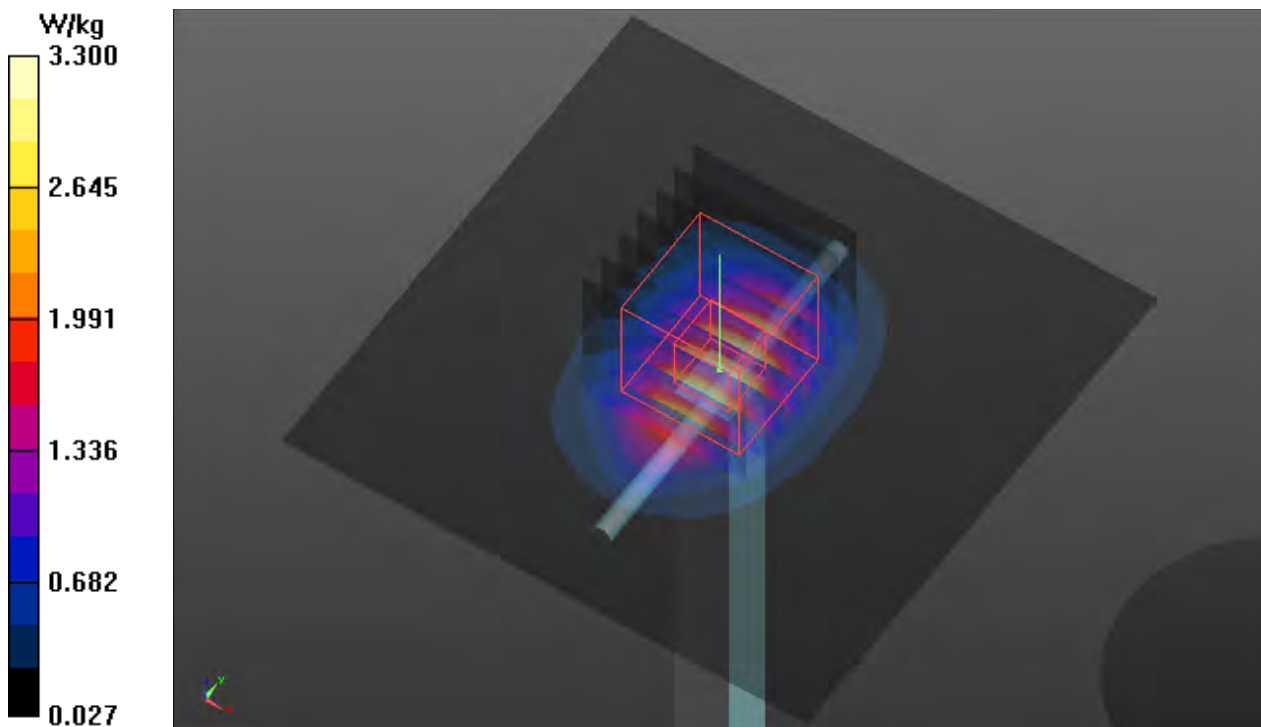
Ambient Temperature : 23.5 °C ; Liquid Temperature : 23.1 °C

DASY5 Configuration:

- Probe: EX3DV4 - SN7554; ConvF(7.62, 7.62, 7.62) @ 2300 MHz; Calibrated: 2020/09/28
- Sensor-Surface: 1.4mm (Mechanical Surface Detection)
- Electronics: DAE4 Sn1590; Calibrated: 2020/09/15
- Phantom: Twin SAM Phantom\_1986; Type: QD 000 P40 CD;
- Measurement SW: DASY52, Version 52.10 (4); SEMCAD X Version 14.6.14 (7483)

**Pin=50mW/Area Scan (81x81x1):** Interpolated grid: dx=1.200 mm, dy=1.200 mm  
Maximum value of SAR (interpolated) = 3.30 W/kg

**Pin=50mW/Zoom Scan (7x7x7)/Cube 0:** Measurement grid: dx=5mm, dy=5mm, dz=5mm  
Reference Value = 44.91 V/m; Power Drift = -0.02 dB  
Peak SAR (extrapolated) = 3.97 W/kg  
**SAR(1 g) = 2.29 W/kg; SAR(10 g) = 1.27 W/kg** (SAR corrected for target medium)  
Maximum value of SAR (measured) = 3.28 W/kg



## System Check\_H2450\_201209

**DUT: Dipole 2450 MHz; Type: D2450V2; SN: 737**

Communication System: UID 0, CW; Frequency: 2450 MHz; Duty Cycle: 1:1

Medium: H19T27N1\_1209 Medium parameters used (interpolated):  $f = 2450$  MHz;  $\sigma = 1.879$  S/m;  $\epsilon_r = 39.289$ ;  $\rho = 1000$  kg/m<sup>3</sup>

Ambient Temperature : 23.8 °C; Liquid Temperature : 23.2 °C

DASY5 Configuration:

- Probe: EX3DV4 - SN3650; ConvF(7.75, 7.75, 7.75) @ 2450 MHz; Calibrated: 2020/03/25
- Sensor-Surface: 1.4mm (Mechanical Surface Detection)
- Electronics: DAE4 Sn861; Calibrated: 2020/05/27
- Phantom: Twin-SAM V8.0\_1988; Type: QD 000 P41 AA;
- Measurement SW: DASY52, Version 52.10 (4); SEMCAD X Version 14.6.14 (7483)

**Pin=50mW/Area Scan (81x81x1):** Interpolated grid: dx=1.200 mm, dy=1.200 mm  
Maximum value of SAR (interpolated) = 4.39 W/kg

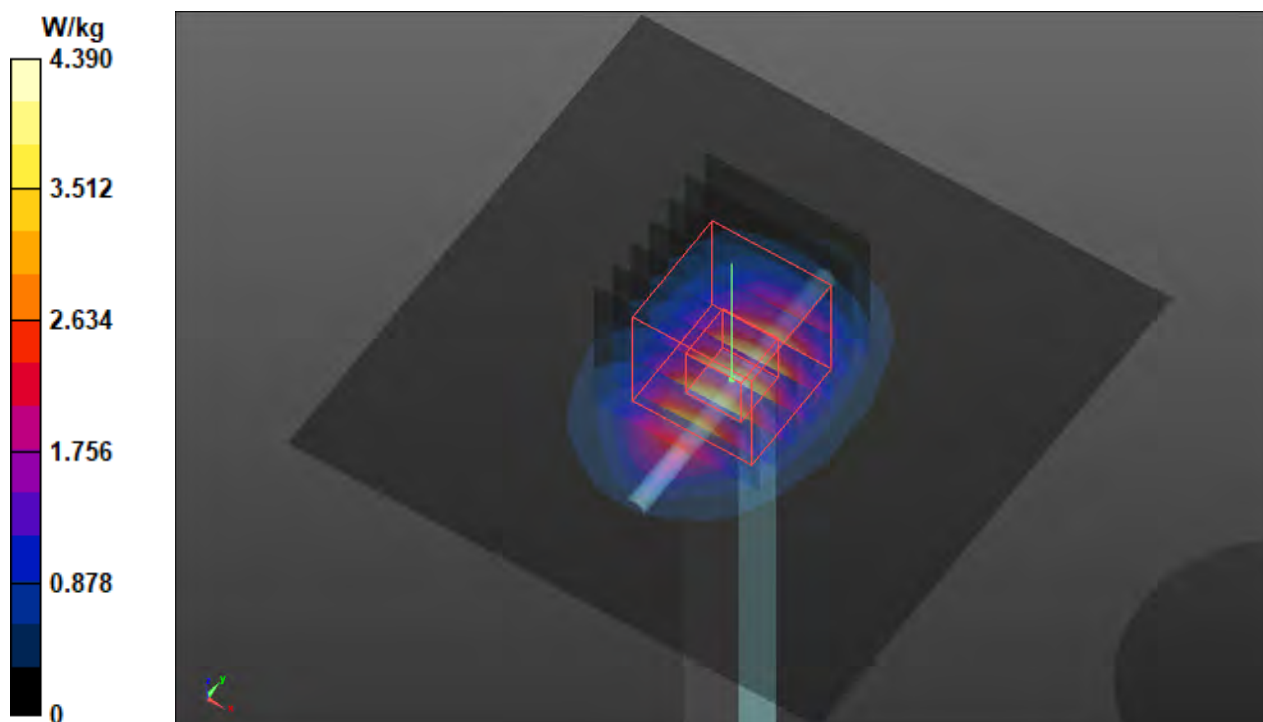
**Pin=50mW/Zoom Scan (7x7x7)/Cube 0:** Measurement grid: dx=5mm, dy=5mm, dz=5mm

Reference Value = 50.30 V/m; Power Drift = -0.19 dB

Peak SAR (extrapolated) = 5.39 W/kg

**SAR(1 g) = 2.68 W/kg; SAR(10 g) = 1.29 W/kg** (SAR corrected for target medium)

Maximum value of SAR (measured) = 4.46 W/kg





## System Check\_H2600\_201204

**DUT: Dipole 2600 MHz; Type: D2600V2; SN: 1020**

Communication System: UID 0, CW; Frequency: 2600 MHz; Duty Cycle: 1:1

Medium: H19T27N1\_1204 Medium parameters used:  $f = 2600$  MHz;  $\sigma = 2.049$  S/m;  $\epsilon_r = 38.987$ ;  $\rho = 1000$  kg/m<sup>3</sup>

Ambient Temperature : 23.6 °C ; Liquid Temperature : 23.3 °C

DASY5 Configuration:

- Probe: EX3DV4 - SN7554; ConvF(7.28, 7.28, 7.28) @ 2600 MHz; Calibrated: 2020/09/28
- Sensor-Surface: 1.4mm (Mechanical Surface Detection)
- Electronics: DAE4 Sn1590; Calibrated: 2020/09/15
- Phantom: Twin SAM Phantom\_1986; Type: QD 000 P40 CD;
- Measurement SW: DASY52, Version 52.10 (4); SEMCAD X Version 14.6.14 (7483)

**Pin=50mW/Area Scan (81x81x1):** Interpolated grid: dx=1.200 mm, dy=1.200 mm

Maximum value of SAR (interpolated) = 4.69 W/kg

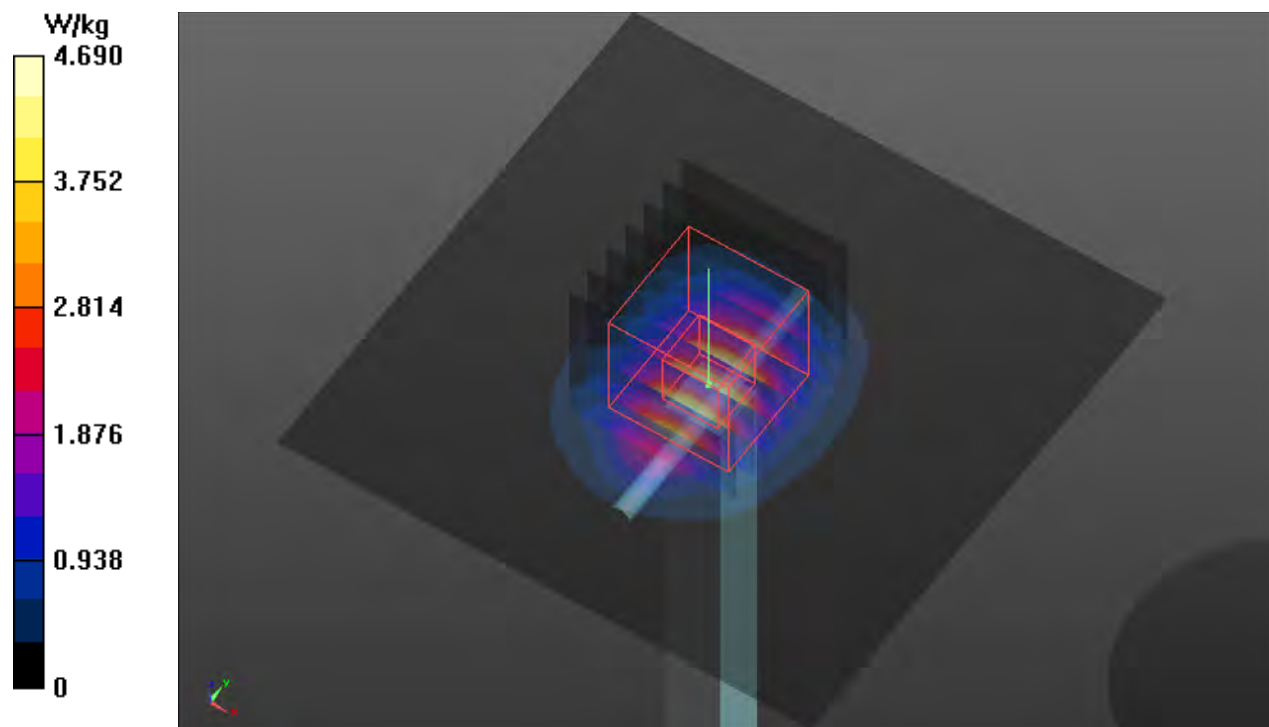
**Pin=50mW/Zoom Scan (7x7x7)/Cube 0:** Measurement grid: dx=5mm, dy=5mm, dz=5mm

Reference Value = 48.86 V/m; Power Drift = 0.06 dB

Peak SAR (extrapolated) = 5.89 W/kg

**SAR(1 g) = 2.71 W/kg; SAR(10 g) = 1.23 W/kg** (SAR corrected for target medium)

Maximum value of SAR (measured) = 4.71 W/kg



## System Check\_H5250\_201210

**DUT: Dipole 5 GHz; Type: D5GHzV2; SN: 1019**

Communication System: UID 0, CW; Frequency: 5250 MHz; Duty Cycle: 1:1

Medium: H34T60N1\_1210 Medium parameters used:  $f = 5250$  MHz;  $\sigma = 4.835$  S/m;  $\epsilon_r = 36.46$ ;  $\rho = 1000$  kg/m<sup>3</sup>

Ambient Temperature : 23.8 °C ; Liquid Temperature : 23.3 °C

DASY5 Configuration:

- Probe: EX3DV4 - SN7537; ConvF(5.35, 5.35, 5.35) @ 5250 MHz; Calibrated: 2020/05/29
- Sensor-Surface: 1.4mm (Mechanical Surface Detection)
- Electronics: DAE4 Sn1277; Calibrated: 2020/01/24
- Phantom: SAM Phantom\_1982; Type: QD 000 P41 Ax;
- Measurement SW: DASY52, Version 52.10 (4); SEMCAD X Version 14.6.14 (7483)

**Pin=50mW/Area Scan (91x91x1):** Interpolated grid: dx=1.000 mm, dy=1.000 mm

Maximum value of SAR (interpolated) = 8.54 W/kg

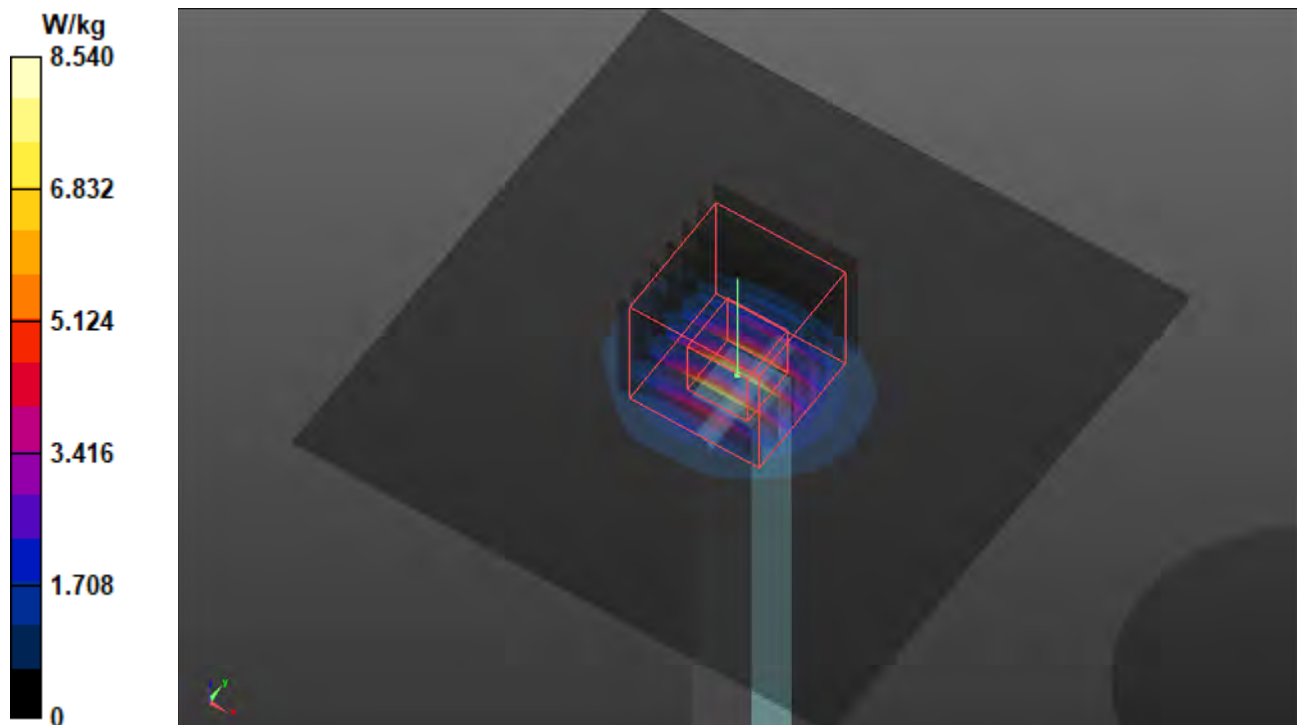
**Pin=50mW/Zoom Scan (7x7x7)/Cube 0:** Measurement grid: dx=4mm, dy=4mm, dz=1.4mm

Reference Value = 47.85 V/m; Power Drift = -0.03 dB

Peak SAR (extrapolated) = 14.3 W/kg

**SAR(1 g) = 3.81 W/kg; SAR(10 g) = 1.15 W/kg** (SAR corrected for target medium)

Maximum value of SAR (measured) = 9.18 W/kg





## System Check\_H5600\_201210

**DUT: Dipole 5 GHz; Type: D5GHzV2; SN: 1019**

Communication System: UID 0, CW; Frequency: 5600 MHz; Duty Cycle: 1:1

Medium: H34T60N1\_1210 Medium parameters used:  $f = 5600$  MHz;  $\sigma = 5.224$  S/m;  $\epsilon_r = 35.924$ ;  $\rho = 1000$  kg/m<sup>3</sup>

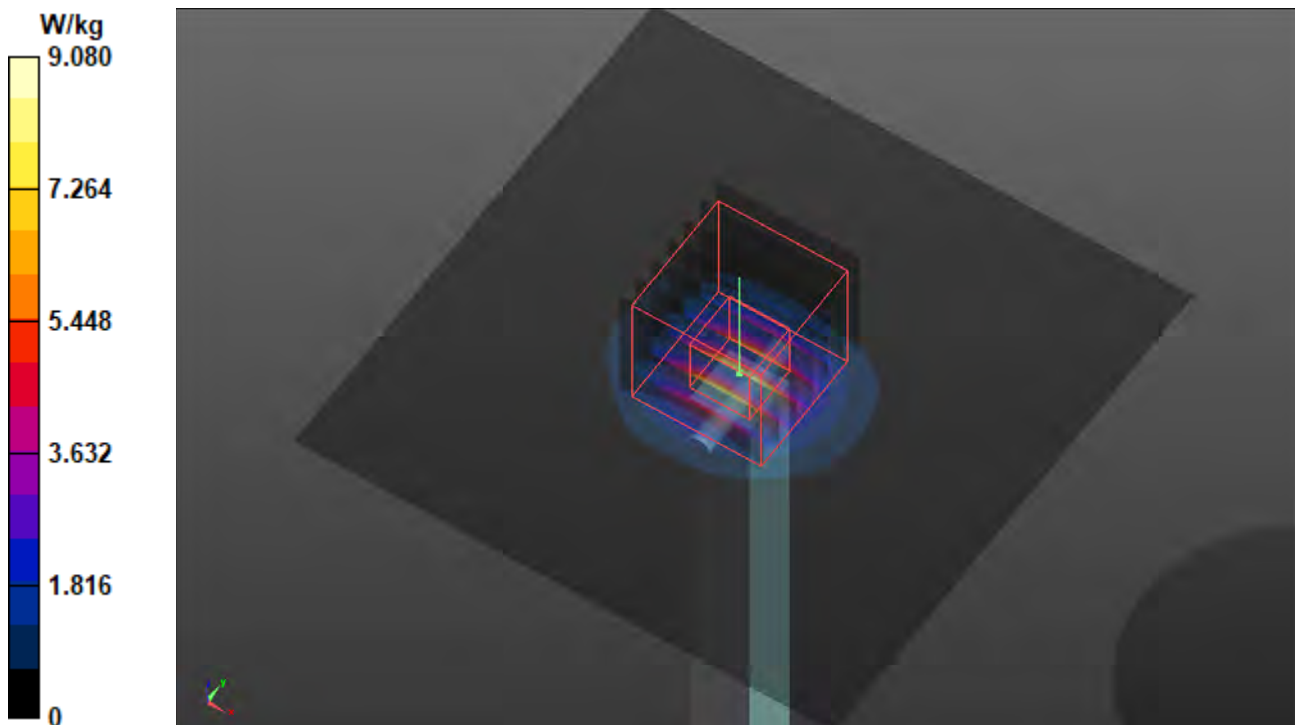
Ambient Temperature : 23.8 °C ; Liquid Temperature : 23.3 °C

DASY5 Configuration:

- Probe: EX3DV4 - SN7537; ConvF(4.7, 4.7, 4.7) @ 5600 MHz; Calibrated: 2020/05/29
- Sensor-Surface: 1.4mm (Mechanical Surface Detection)
- Electronics: DAE4 Sn1277; Calibrated: 2020/01/24
- Phantom: SAM Phantom\_1982; Type: QD 000 P41 Ax;
- Measurement SW: DASY52, Version 52.10 (4); SEMCAD X Version 14.6.14 (7483)

**Pin=50mW/Area Scan (91x91x1):** Interpolated grid: dx=1.000 mm, dy=1.000 mm  
Maximum value of SAR (interpolated) = 9.08 W/kg

**Pin=50mW/Zoom Scan (7x7x7)/Cube 0:** Measurement grid: dx=4mm, dy=4mm, dz=1.4mm  
Reference Value = 47.20 V/m; Power Drift = -0.03 dB  
Peak SAR (extrapolated) = 16.4 W/kg  
**SAR(1 g) = 3.87 W/kg; SAR(10 g) = 1.16 W/kg** (SAR corrected for target medium)  
Maximum value of SAR (measured) = 9.77 W/kg



## System Check\_H5750\_201210

**DUT: Dipole 5 GHz; Type: D5GHzV2; SN: 1019**

Communication System: UID 0, CW; Frequency: 5750 MHz; Duty Cycle: 1:1

Medium: H34T60N1\_1210 Medium parameters used:  $f = 5750$  MHz;  $\sigma = 5.364$  S/m;  $\epsilon_r = 35.91$ ;  $\rho = 1000$  kg/m<sup>3</sup>

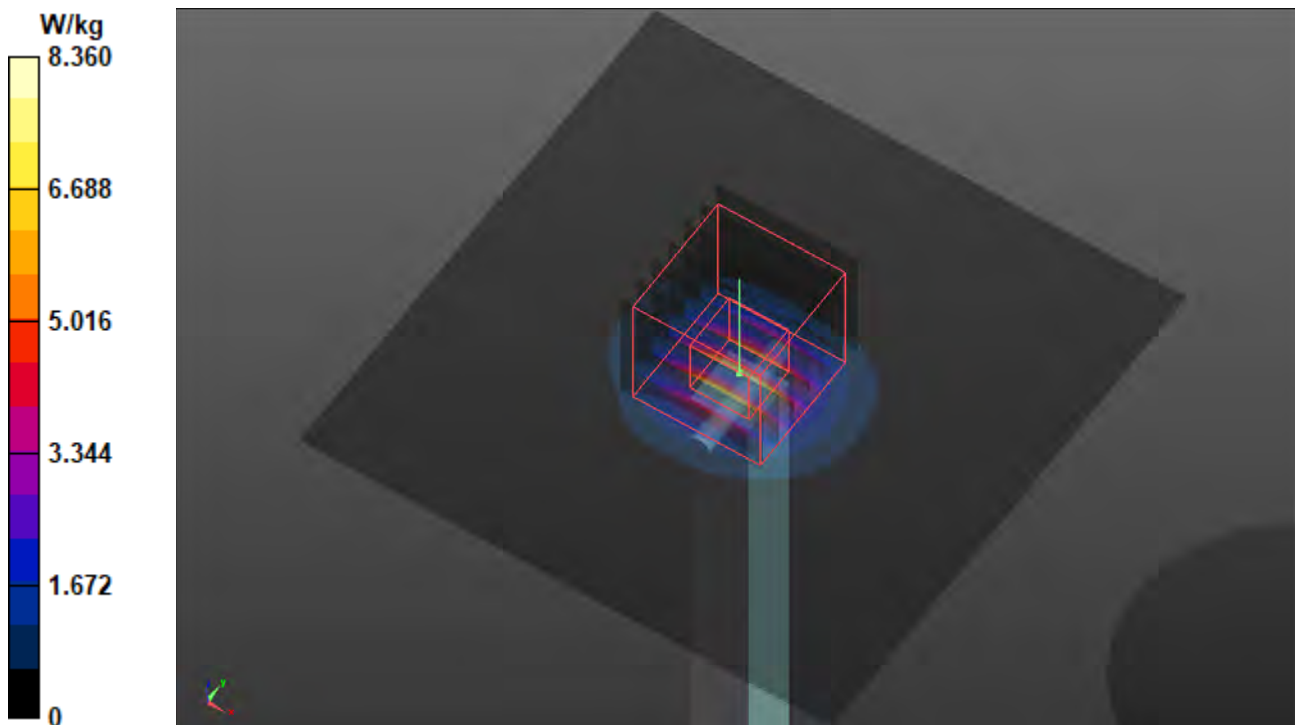
Ambient Temperature : 23.8 °C ; Liquid Temperature : 23.3 °C

DASY5 Configuration:

- Probe: EX3DV4 - SN7537; ConvF(4.95, 4.95, 4.95) @ 5750 MHz; Calibrated: 2020/05/29
- Sensor-Surface: 1.4mm (Mechanical Surface Detection)
- Electronics: DAE4 Sn1277; Calibrated: 2020/01/24
- Phantom: SAM Phantom\_1982; Type: QD 000 P41 Ax;
- Measurement SW: DASY52, Version 52.10 (4); SEMCAD X Version 14.6.14 (7483)

**Pin=50mW/Area Scan (91x91x1):** Interpolated grid: dx=1.000 mm, dy=1.000 mm  
Maximum value of SAR (interpolated) = 8.36 W/kg

**Pin=50mW/Zoom Scan (7x7x7)/Cube 0:** Measurement grid: dx=4mm, dy=4mm, dz=1.4mm  
Reference Value = 44.66 V/m; Power Drift = -0.02 dB  
Peak SAR (extrapolated) = 15.3 W/kg  
**SAR(1 g) = 3.52 W/kg; SAR(10 g) = 1.05 W/kg** (SAR corrected for target medium)  
Maximum value of SAR (measured) = 8.91 W/kg



## Appendix B. SAR Plots of SAR Measurement

The SAR plots for highest measured SAR in each exposure configuration, wireless mode and frequency band combination, and measured SAR > 1.5 W/kg are shown as follows.

### P01 GSM850\_GPRS11\_Rear Face\_0mm\_Ch189

**DUT: 201118C03**

Communication System: UID 10027 - DAC, GPRS-FDD (TDMA, GMSK, TN 0-1-2); Frequency: 836.4 MHz; Duty Cycle: 1:3.02

Medium: H07T10N1\_1128 Medium parameters used:  $f = 836.4$  MHz;  $\sigma = 0.937$  S/m;  $\epsilon_r = 43.124$ ;  $\rho = 1000$  kg/m<sup>3</sup>

Ambient Temperature : 23.4 °C ; Liquid Temperature : 23.2 °C

DASY5 Configuration:

- Probe: EX3DV4 - SN3820; ConvF(9.01, 9.01, 9.01) @ 836.4 MHz; Calibrated: 2020/06/25
- Sensor-Surface: 1.4mm (Mechanical Surface Detection)
- Electronics: DAE4 Sn1431; Calibrated: 2020/03/18
- Phantom: SAM Phantom\_1985; Type: QD 000 P41 AA;
- Measurement SW: DASY52, Version 52.10 (4); SEMCAD X Version 14.6.14 (7483)

**Area Scan (81x141x1):** Interpolated grid: dx=1.500 mm, dy=1.500 mm

Maximum value of SAR (interpolated) = 0.925 W/kg

**Zoom Scan (5x5x7)/Cube 0:** Measurement grid: dx=8mm, dy=8mm, dz=5mm

Reference Value = 30.44 V/m; Power Drift = -0.06 dB

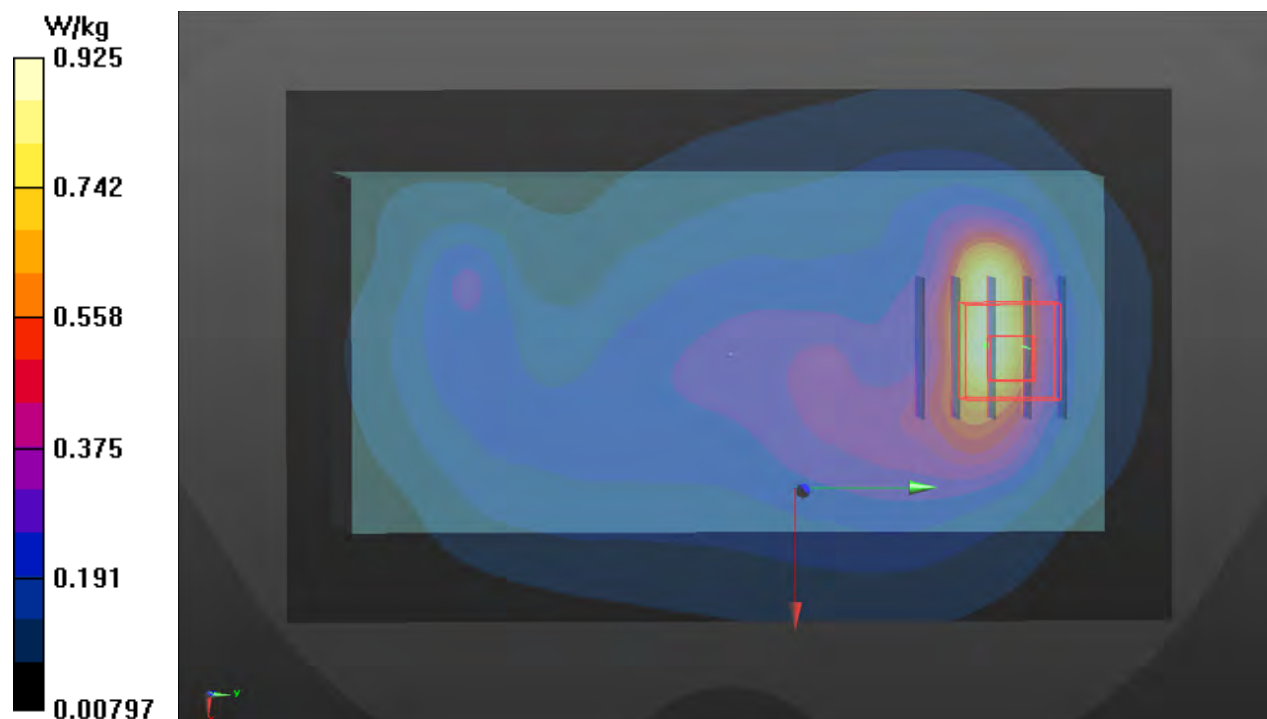
Peak SAR (extrapolated) = 1.31 W/kg

**SAR(1 g) = 0.656 W/kg; SAR(10 g) = 0.373 W/kg** (SAR corrected for target medium)

Smallest distance from peaks to all points 3 dB below = 8.6 mm

Ratio of SAR at M2 to SAR at M1 = 53.7%

Maximum value of SAR (measured) = 0.994 W/kg



## P02 GSM1900\_GPRS11\_Rear Face\_0mm\_Ch810

**DUT: 201118C03**

Communication System: UID 10027 - DAC, GPRS-FDD (TDMA, GMSK, TN 0-1-2); Frequency: 1909.8 MHz; Duty Cycle: 1:3.02

Medium: H16T20N1\_1128 Medium parameters used:  $f = 1910$  MHz;  $\sigma = 1.462$  S/m;  $\epsilon_r = 39.315$ ;  $\rho = 1000$  kg/m<sup>3</sup>

Ambient Temperature : 23.6 °C ; Liquid Temperature : 23.3 °C

DASY5 Configuration:

- Probe: EX3DV4 - SN3820; ConvF(7.4, 7.4, 7.4) @ 1909.8 MHz; Calibrated: 2020/06/25
- Sensor-Surface: 1.4mm (Mechanical Surface Detection)
- Electronics: DAE4 Sn1431; Calibrated: 2020/03/18
- Phantom: SAM Phantom\_1985; Type: QD 000 P41 AA;
- Measurement SW: DASY52, Version 52.10 (4); SEMCAD X Version 14.6.14 (7483)

**Area Scan (81x141x1):** Interpolated grid: dx=1.500 mm, dy=1.500 mm

Maximum value of SAR (interpolated) = 9.14 W/kg

**Zoom Scan (5x5x7)/Cube 0:** Measurement grid: dx=8mm, dy=8mm, dz=5mm

Reference Value = 72.82 V/m; Power Drift = 0.14 dB

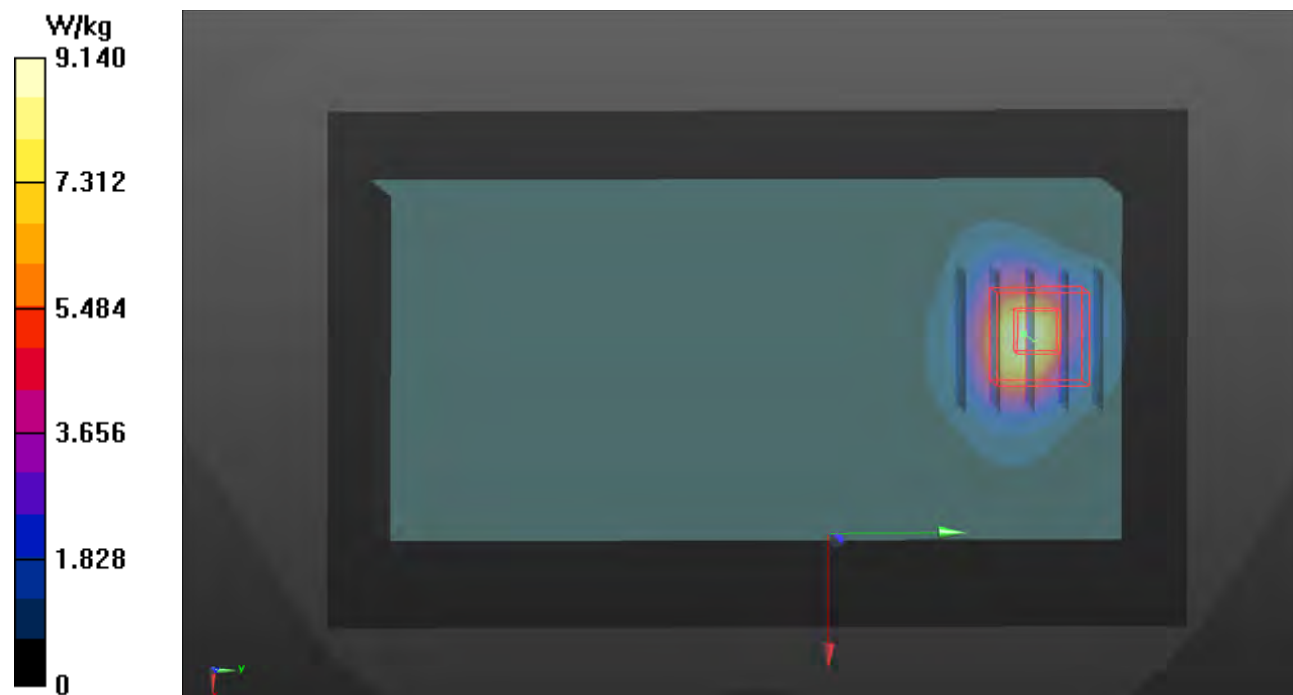
Peak SAR (extrapolated) = 12.1 W/kg

**SAR(1 g) = 6 W/kg; SAR(10 g) = 2.96 W/kg** (SAR corrected for target medium)

Smallest distance from peaks to all points 3 dB below = 8.2 mm

Ratio of SAR at M2 to SAR at M1 = 53.8%

Maximum value of SAR (measured) = 9.40 W/kg



### P03 WCDMA II\_RMC12.2K\_Rear Face\_0mm\_Ch9262

**DUT: 201118C03**

Communication System: UID 10011 - CAB, UMTS-FDD (WCDMA); Frequency: 1852.4 MHz; Duty Cycle: 1:1.95

Medium: H16T20N1\_1208 Medium parameters used (interpolated):  $f = 1852.4$  MHz;  $\sigma = 1.418$  S/m;  $\epsilon_r = 39.394$ ;  $\rho = 1000$  kg/m<sup>3</sup>

Ambient Temperature : 23.5 °C; Liquid Temperature : 23.1 °C

DASY5 Configuration:

- Probe: EX3DV4 - SN7555; ConvF(8.42, 8.42, 8.42) @ 1852.4 MHz; Calibrated: 2020/09/28
- Sensor-Surface: 1.4mm (Mechanical Surface Detection)
- Electronics: DAE4 Sn1589; Calibrated: 2020/09/15
- Phantom: SAM Phantom\_1987; Type: QD 000 P41 AA;
- Measurement SW: DASY52, Version 52.10 (4); SEMCAD X Version 14.6.14 (7483)

**Area Scan (81x141x1):** Interpolated grid: dx=1.500 mm, dy=1.500 mm

Maximum value of SAR (interpolated) = 11.9 W/kg

**Zoom Scan (5x5x7)/Cube 0:** Measurement grid: dx=8mm, dy=8mm, dz=5mm

Reference Value = 83.75 V/m; Power Drift = -0.12 dB

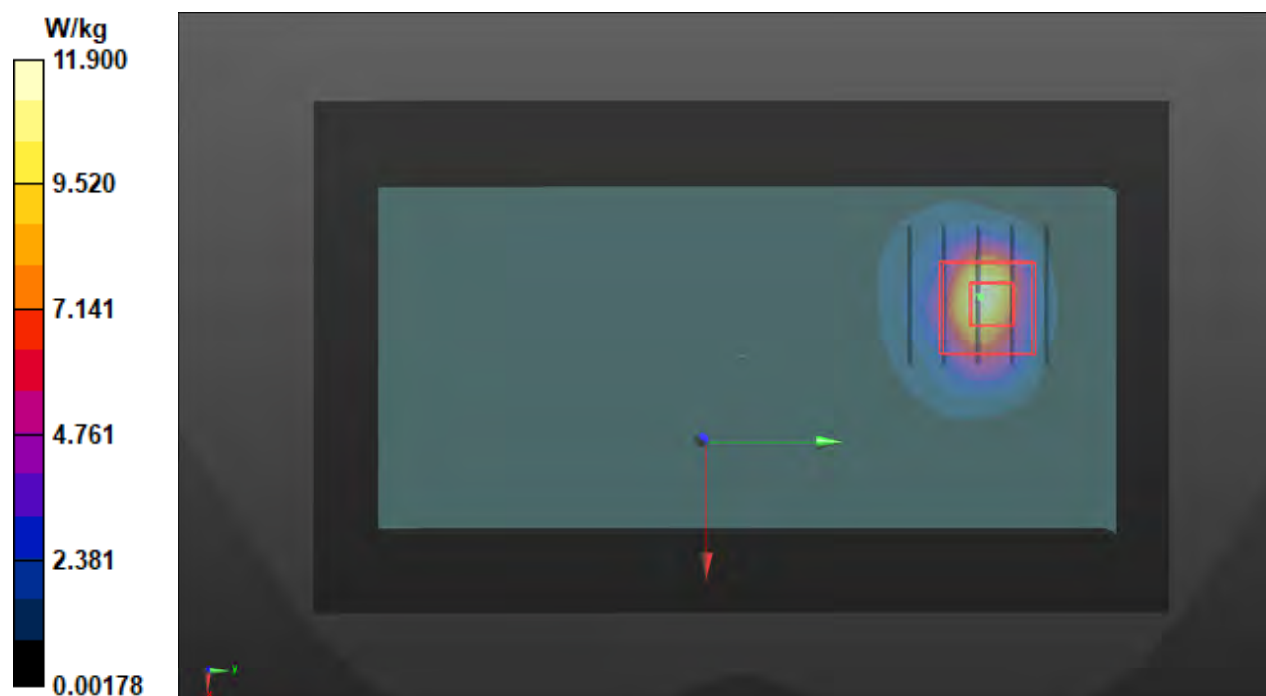
Peak SAR (extrapolated) = 11.8 W/kg

**SAR(1 g) = 5.36 W/kg; SAR(10 g) = 2.49 W/kg** (SAR corrected for target medium)

Smallest distance from peaks to all points 3 dB below = 8.1 mm

Ratio of SAR at M2 to SAR at M1 = 46.3%

Maximum value of SAR (measured) = 8.70 W/kg



## P04 WCDMA IV\_RMC12.2K\_Rear Face\_0mm\_Ch1312

**DUT: 201118C03**

Communication System: UID 10011 - CAB, UMTS-FDD (WCDMA); Frequency: 1712.4 MHz; Duty Cycle: 1:1.95

Medium: H16T20N1\_1208 Medium parameters used:  $f = 1712.4$  MHz;  $\sigma = 1.294$  S/m;  $\epsilon_r = 39.97$ ;  $\rho = 1000$  kg/m<sup>3</sup>

Ambient Temperature : 23.5 °C; Liquid Temperature : 23.1 °C

DASY5 Configuration:

- Probe: EX3DV4 - SN7555; ConvF(8.6, 8.6, 8.6) @ 1712.4 MHz; Calibrated: 2020/09/28
- Sensor-Surface: 1.4mm (Mechanical Surface Detection)
- Electronics: DAE4 Sn1589; Calibrated: 2020/09/15
- Phantom: SAM Phantom\_1987; Type: QD 000 P41 AA;
- Measurement SW: DASY52, Version 52.10 (4); SEMCAD X Version 14.6.14 (7483)

**Area Scan (81x141x1):** Interpolated grid: dx=1.500 mm, dy=1.500 mm

Maximum value of SAR (interpolated) = 11.9 W/kg

**Zoom Scan (5x5x7)/Cube 0:** Measurement grid: dx=8mm, dy=8mm, dz=5mm

Reference Value = 83.49 V/m; Power Drift = -0.08 dB

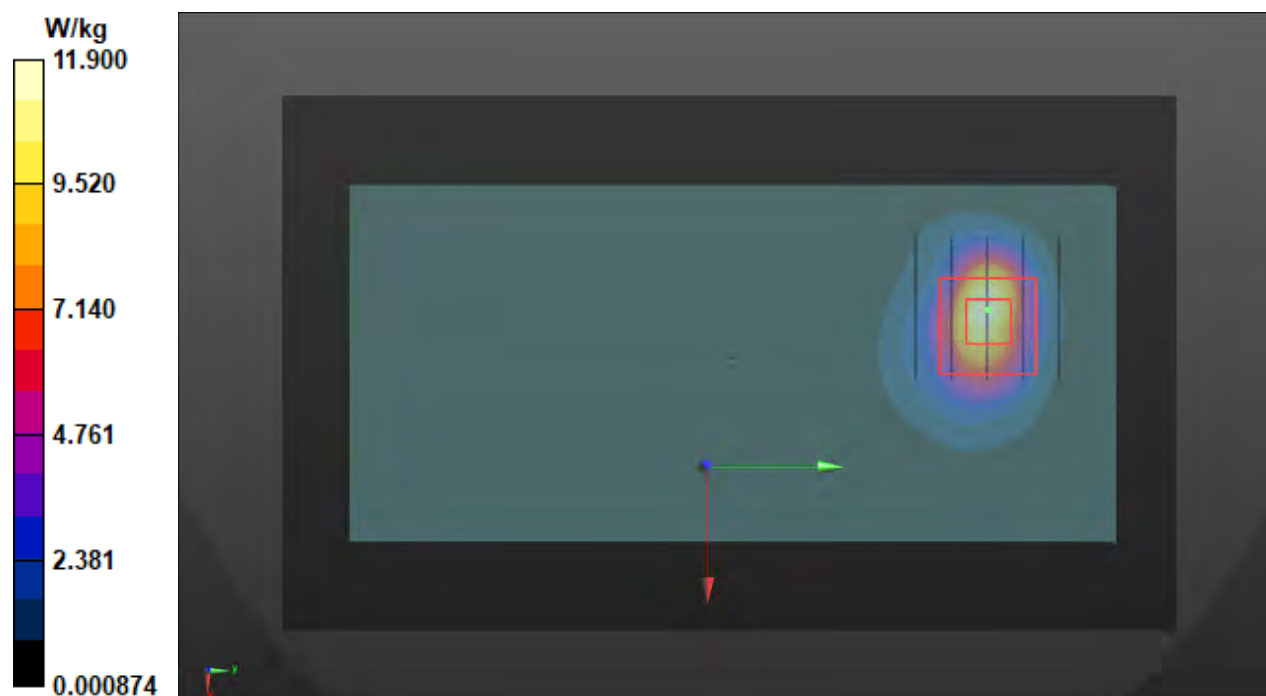
Peak SAR (extrapolated) = 12.1 W/kg

**SAR(1 g) = 5.93 W/kg; SAR(10 g) = 2.79 W/kg** (SAR corrected for target medium)

Smallest distance from peaks to all points 3 dB below = 8.3 mm

Ratio of SAR at M2 to SAR at M1 = 48.4%

Maximum value of SAR (measured) = 9.76 W/kg



### P05 WCDMA V\_RMC12.2K\_Rear Face\_0mm\_Ch4132

**DUT: 201118C03**

Communication System: UID 10011 - CAB, UMTS-FDD (WCDMA); Frequency: 826.4 MHz; Duty Cycle: 1:1.95

Medium: H07T10N1\_1128 Medium parameters used (interpolated):  $f = 826.4$  MHz;  $\sigma = 0.928$  S/m;  $\epsilon_r = 43.246$ ;  $\rho = 1000$  kg/m<sup>3</sup>

Ambient Temperature : 23.6 °C ; Liquid Temperature : 23.3 °C

DASY5 Configuration:

- Probe: EX3DV4 - SN3820; ConvF(9.01, 9.01, 9.01) @ 826.4 MHz; Calibrated: 2020/06/25
- Sensor-Surface: 1.4mm (Mechanical Surface Detection)
- Electronics: DAE4 Sn1431; Calibrated: 2020/03/18
- Phantom: SAM Phantom\_1985; Type: QD 000 P41 AA;
- Measurement SW: DASY52, Version 52.10 (4); SEMCAD X Version 14.6.14 (7483)

**Area Scan (81x141x1):** Interpolated grid: dx=1.500 mm, dy=1.500 mm

Maximum value of SAR (interpolated) = 0.843 W/kg

**Zoom Scan (5x5x7)/Cube 0:** Measurement grid: dx=8mm, dy=8mm, dz=5mm

Reference Value = 30.47 V/m; Power Drift = -0.13 dB

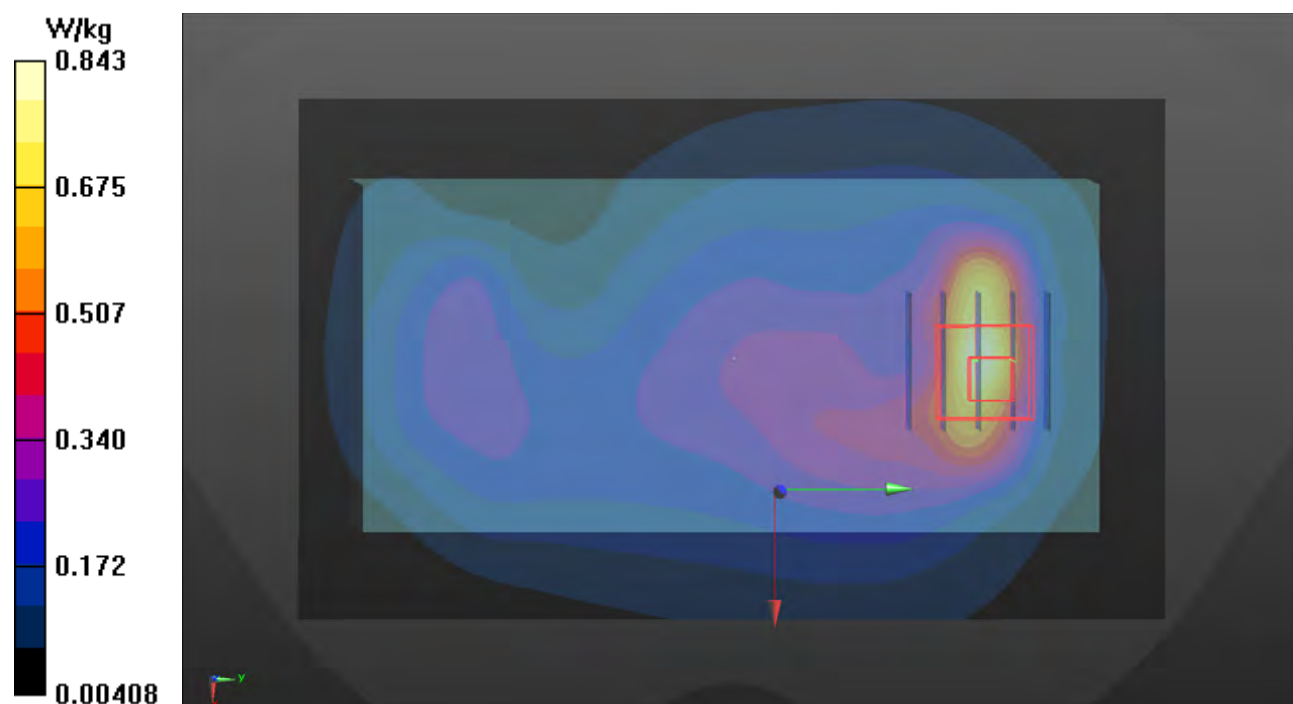
Peak SAR (extrapolated) = 1.08 W/kg

**SAR(1 g) = 0.535 W/kg; SAR(10 g) = 0.305 W/kg** (SAR corrected for target medium)

Smallest distance from peaks to all points 3 dB below = 8.2 mm

Ratio of SAR at M2 to SAR at M1 = 52.7%

Maximum value of SAR (measured) = 0.763 W/kg





### P06 LTE 2\_QPSK20M\_Rear Face\_0mm\_Ch18700\_1RB\_OS50

**DUT: 201118C03**

Communication System: UID 10169 - CAE, LTE-FDD (SC-FDMA, 1 RB, 20 MHz, QPSK);  
Frequency: 1860 MHz; Duty Cycle: 1:3.74

Medium: H16T20N1\_1208 Medium parameters used:  $f = 1860$  MHz;  $\sigma = 1.425$  S/m;  $\epsilon_r = 39.363$ ;  $\rho = 1000$  kg/m<sup>3</sup>

Ambient Temperature : 23.5 °C; Liquid Temperature : 23.1 °C

DASY5 Configuration:

- Probe: EX3DV4 - SN7555; ConvF(8.42, 8.42, 8.42) @ 1860 MHz; Calibrated: 2020/09/28
- Sensor-Surface: 1.4mm (Mechanical Surface Detection)
- Electronics: DAE4 Sn1589; Calibrated: 2020/09/15
- Phantom: SAM Phantom\_1987; Type: QD 000 P41 AA;
- Measurement SW: DASY52, Version 52.10 (4); SEMCAD X Version 14.6.14 (7483)

**Area Scan (81x141x1):** Interpolated grid: dx=1.500 mm, dy=1.500 mm

Maximum value of SAR (interpolated) = 12.1 W/kg

**Zoom Scan (5x5x7)/Cube 0:** Measurement grid: dx=8mm, dy=8mm, dz=5mm

Reference Value = 79.82 V/m; Power Drift = -0.11 dB

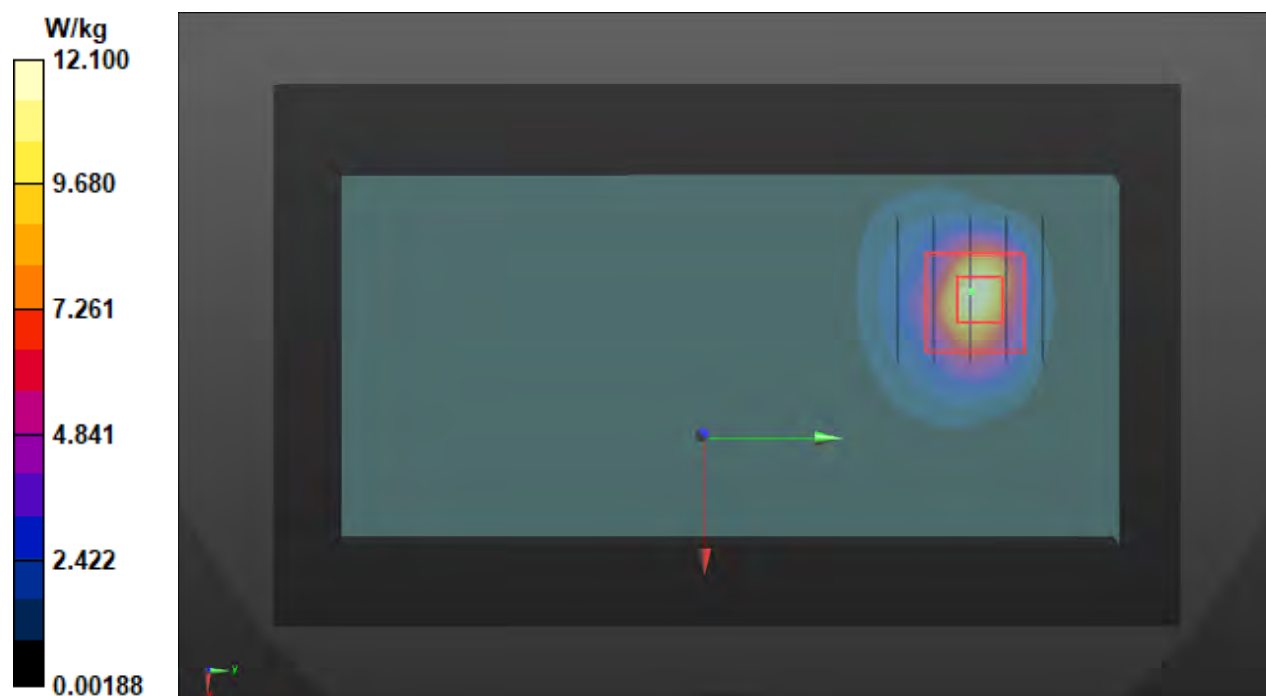
Peak SAR (extrapolated) = 14.4 W/kg

**SAR(1 g) = 6.31 W/kg; SAR(10 g) = 2.9 W/kg** (SAR corrected for target medium)

Smallest distance from peaks to all points 3 dB below = 8.3 mm

Ratio of SAR at M2 to SAR at M1 = 44%

Maximum value of SAR (measured) = 11.3 W/kg



### P07 LTE 4\_QPSK20M\_Rear Face\_0mm\_Ch20175\_1RB\_OS50

**DUT: 201118C03**

Communication System: UID 10169 - CAE, LTE-FDD (SC-FDMA, 1 RB, 20 MHz, QPSK);

Frequency: 1732.5 MHz; Duty Cycle: 1:3.74

Medium: H16T20N1\_1202 Medium parameters used:  $f = 1733$  MHz;  $\sigma = 1.305$  S/m;  $\epsilon_r = 40.336$ ;  $\rho = 1000$  kg/m<sup>3</sup>

Ambient Temperature : 23.7 °C ; Liquid Temperature : 23.1 °C

DASY5 Configuration:

- Probe: EX3DV4 - SN7554; ConvF(8.58, 8.58, 8.58) @ 1732.5 MHz; Calibrated: 2020/09/28
- Sensor-Surface: 1.4mm (Mechanical Surface Detection)
- Electronics: DAE4 Sn1590; Calibrated: 2020/09/15
- Phantom: Twin SAM Phantom\_1986; Type: QD 000 P40 CD;
- Measurement SW: DASY52, Version 52.10 (4); SEMCAD X Version 14.6.14 (7483)

**Area Scan (81x141x1):** Interpolated grid: dx=1.500 mm, dy=1.500 mm

Maximum value of SAR (interpolated) = 5.74 W/kg

**Zoom Scan (5x5x7)/Cube 0:** Measurement grid: dx=8mm, dy=8mm, dz=5mm

Reference Value = 63.03 V/m; Power Drift = -0.03 dB

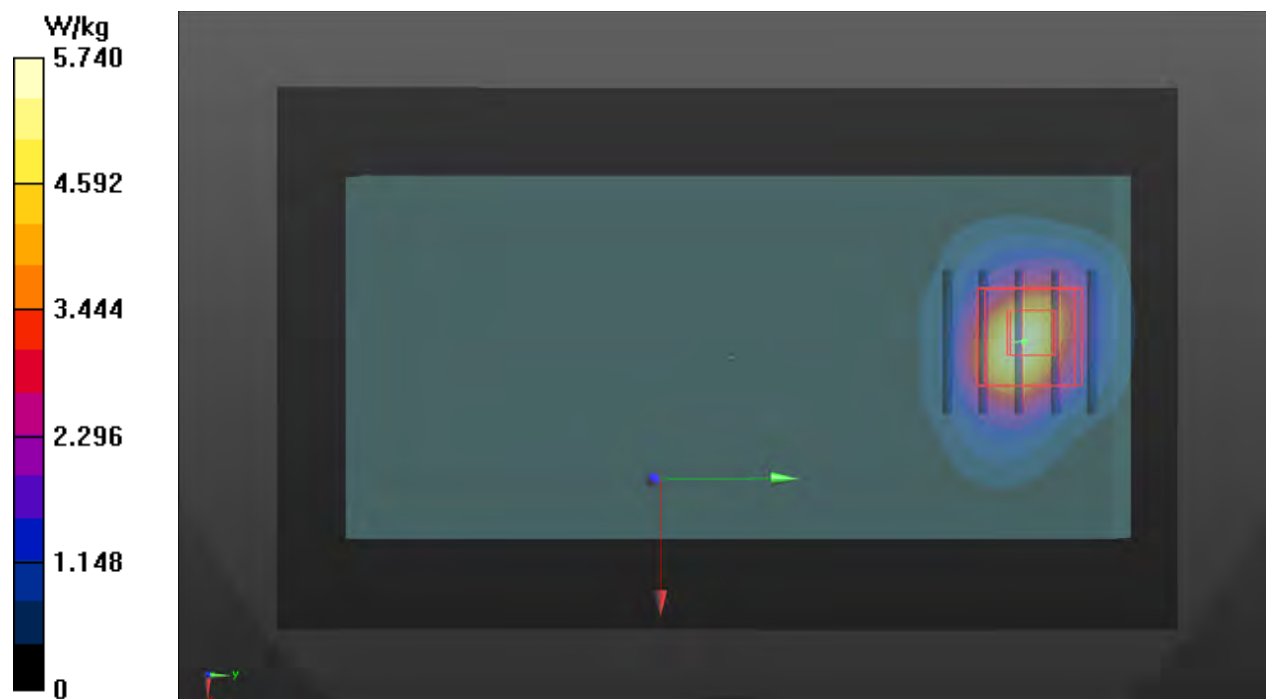
Peak SAR (extrapolated) = 9.80 W/kg

**SAR(1 g) = 5.03 W/kg; SAR(10 g) = 2.38 W/kg** (SAR corrected for target medium)

Smallest distance from peaks to all points 3 dB below = 8.2 mm

Ratio of SAR at M2 to SAR at M1 = 52.1%

Maximum value of SAR (measured) = 7.84 W/kg



### P08 LTE 5\_QPSK10M\_Right Side\_0mm\_Ch20525\_1RB\_OS24

**DUT: 201118C03**

Communication System: UID 10175 - CAG, LTE-FDD (SC-FDMA, 1 RB, 10 MHz, QPSK);  
Frequency: 836.5 MHz; Duty Cycle: 1:3.74  
Medium: H07T10N1\_1203 Medium parameters used (interpolated):  $f = 836.5$  MHz;  $\sigma = 0.91$  S/m;  
 $\epsilon_r = 42.668$ ;  $\rho = 1000$  kg/m<sup>3</sup>  
Ambient Temperature : 23.6 °C ; Liquid Temperature : 23.2 °C

#### DASY5 Configuration:

- Probe: EX3DV4 - SN7554; ConvF(10.05, 10.05, 10.05) @ 836.5 MHz; Calibrated: 2020/09/28
- Sensor-Surface: 1.4mm (Mechanical Surface Detection)
- Electronics: DAE4 Sn1590; Calibrated: 2020/09/15
- Phantom: Twin SAM Phantom\_1986; Type: QD 000 P40 CD;
- Measurement SW: DASY52, Version 52.10 (4); SEMCAD X Version 14.6.14 (7483)

**Area Scan (81x141x1):** Interpolated grid: dx=1.500 mm, dy=1.500 mm  
Maximum value of SAR (interpolated) = 0.765 W/kg

**Zoom Scan (5x5x7)/Cube 0:** Measurement grid: dx=8mm, dy=8mm, dz=5mm

Reference Value = 27.22 V/m; Power Drift = 0.07 dB

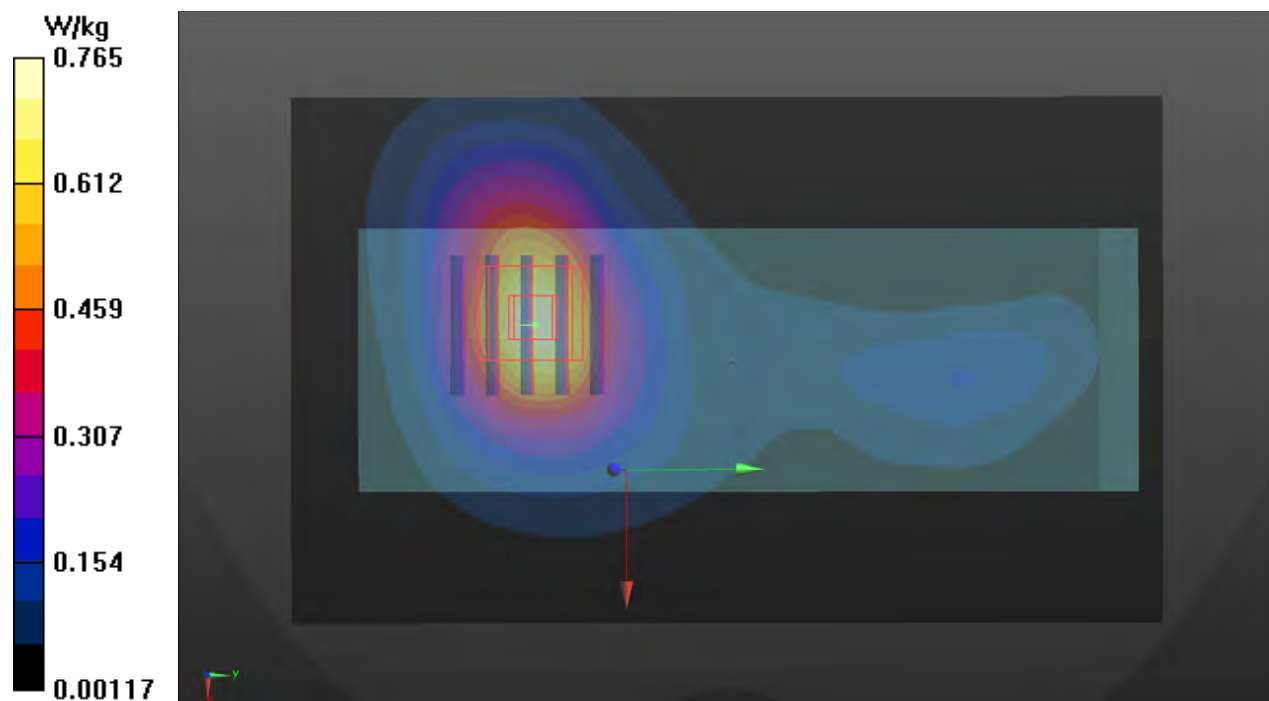
Peak SAR (extrapolated) = 0.847 W/kg

**SAR(1 g) = 0.532 W/kg; SAR(10 g) = 0.337 W/kg** (SAR corrected for target medium)

Smallest distance from peaks to all points 3 dB below = 15.8 mm

Ratio of SAR at M2 to SAR at M1 = 63%

Maximum value of SAR (measured) = 0.735 W/kg



### P09 LTE 7\_QPSK20M\_Rear Face\_0mm\_Ch20850\_1RB\_OS50

**DUT: 201118C03**

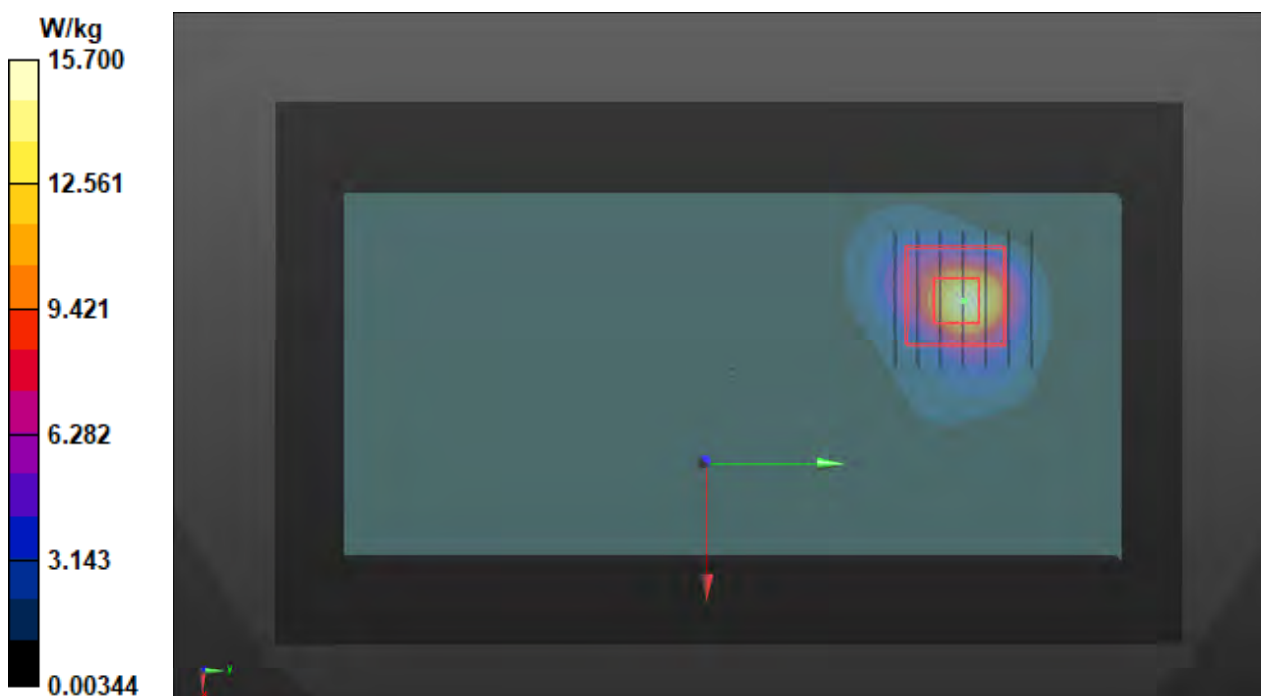
Communication System: UID 10169 - CAE, LTE-FDD (SC-FDMA, 1 RB, 20 MHz, QPSK);  
Frequency: 2510 MHz; Duty Cycle: 1:3.74  
Medium: H19T27N1\_1208 Medium parameters used:  $f = 2510$  MHz;  $\sigma = 1.934$  S/m;  $\epsilon_r = 38.1$ ;  $\rho = 1000$  kg/m<sup>3</sup>  
Ambient Temperature : 23.5 °C; Liquid Temperature : 23.1 °C

DASY5 Configuration:

- Probe: EX3DV4 - SN7555; ConvF(7.36, 7.36, 7.36) @ 2510 MHz; Calibrated: 2020/09/28
- Sensor-Surface: 1.4mm (Mechanical Surface Detection)
- Electronics: DAE4 Sn1589; Calibrated: 2020/09/15
- Phantom: SAM Phantom\_1987; Type: QD 000 P41 AA;
- Measurement SW: DASY52, Version 52.10 (4); SEMCAD X Version 14.6.14 (7483)

**Area Scan (101x171x1):** Interpolated grid: dx=1.200 mm, dy=1.200 mm  
Maximum value of SAR (interpolated) = 15.7 W/kg

**Zoom Scan (7x7x7)/Cube 0:** Measurement grid: dx=5mm, dy=5mm, dz=5mm  
Reference Value = 70.91 V/m; Power Drift = -0.08 dB  
Peak SAR (extrapolated) = 18.6 W/kg  
**SAR(1 g) = 7.94 W/kg; SAR(10 g) = 3.51 W/kg** (SAR corrected for target medium)  
Smallest distance from peaks to all points 3 dB below = 8.5 mm  
Ratio of SAR at M2 to SAR at M1 = 41.6%  
Maximum value of SAR (measured) = 13.8 W/kg



## P20 LTE 12\_QPSK10M\_Rear Face\_0mm\_Ch23095\_1RB\_OS24

**DUT: 201118C03**

Communication System: UID 10175 - CAG, LTE-FDD (SC-FDMA, 1 RB, 10 MHz, QPSK);

Frequency: 707.5 MHz; Duty Cycle: 1:3.74

Medium: H06T09N2\_1203 Medium parameters used (interpolated):  $f = 707.5$  MHz;  $\sigma = 0.913$  S/m;

$\epsilon_r = 43.514$ ;  $\rho = 1000$  kg/m<sup>3</sup>

Ambient Temperature : 23.7 °C ; Liquid Temperature : 23.1 °C

DASY5 Configuration:

- Probe: EX3DV4 - SN7554; ConvF(10.39, 10.39, 10.39) @ 707.5 MHz; Calibrated: 2020/09/28

- Sensor-Surface: 1.4mm (Mechanical Surface Detection)

- Electronics: DAE4 Sn1590; Calibrated: 2020/09/15

- Phantom: Twin SAM Phantom\_1986; Type: QD 000 P40 CD;

- Measurement SW: DASY52, Version 52.10 (3); SEMCAD X Version 14.6.14 (7483)

**Area Scan (81x141x1):** Interpolated grid: dx=1.500 mm, dy=1.500 mm

Maximum value of SAR (interpolated) = 0.829 W/kg

**Zoom Scan (5x5x7)/Cube 0:** Measurement grid: dx=8mm, dy=8mm, dz=5mm

Reference Value = 29.55 V/m; Power Drift = -0.12 dB

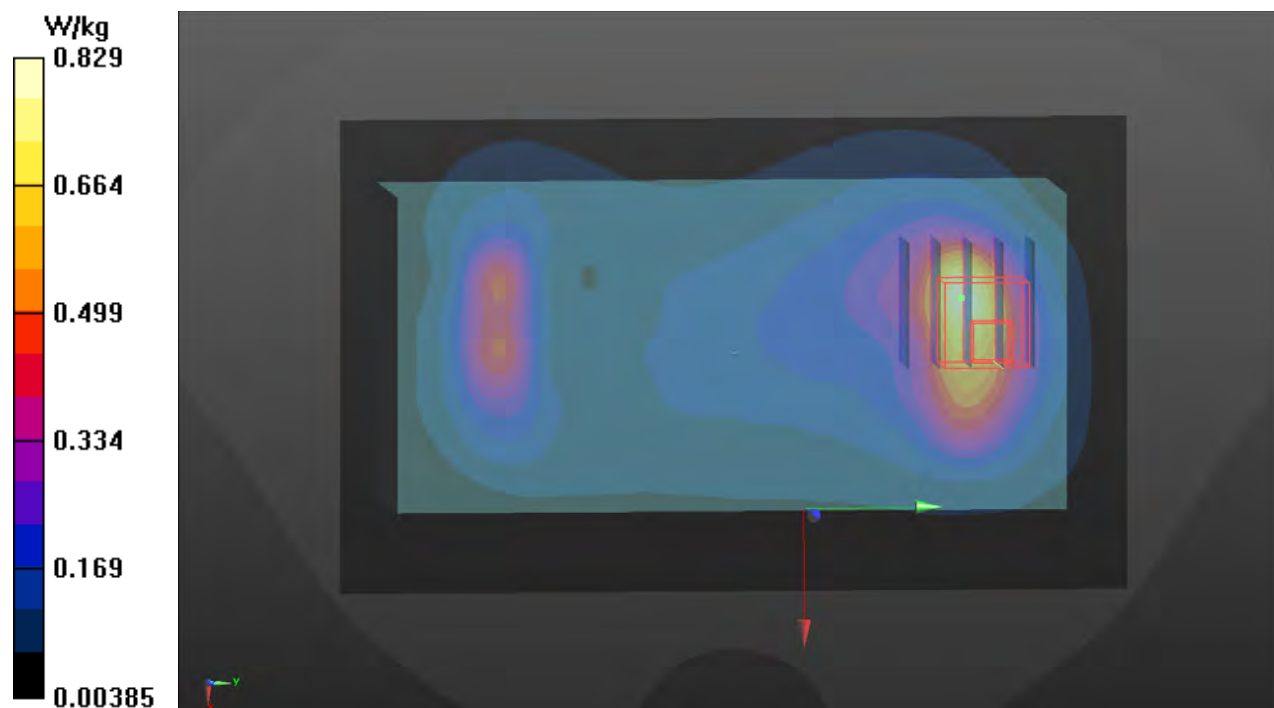
Peak SAR (extrapolated) = 1.04 W/kg

**SAR(1 g) = 0.530 W/kg; SAR(10 g) = 0.316 W/kg** (SAR corrected for target medium)

Smallest distance from peaks to all points 3 dB below = 12.8 mm

Ratio of SAR at M2 to SAR at M1 = 52.3%

Maximum value of SAR (measured) = 0.840 W/kg



### P21 LTE 13\_QPSK10M\_Rear Face\_0mm\_Ch23230\_1RB\_OS24

**DUT: 201118C03**

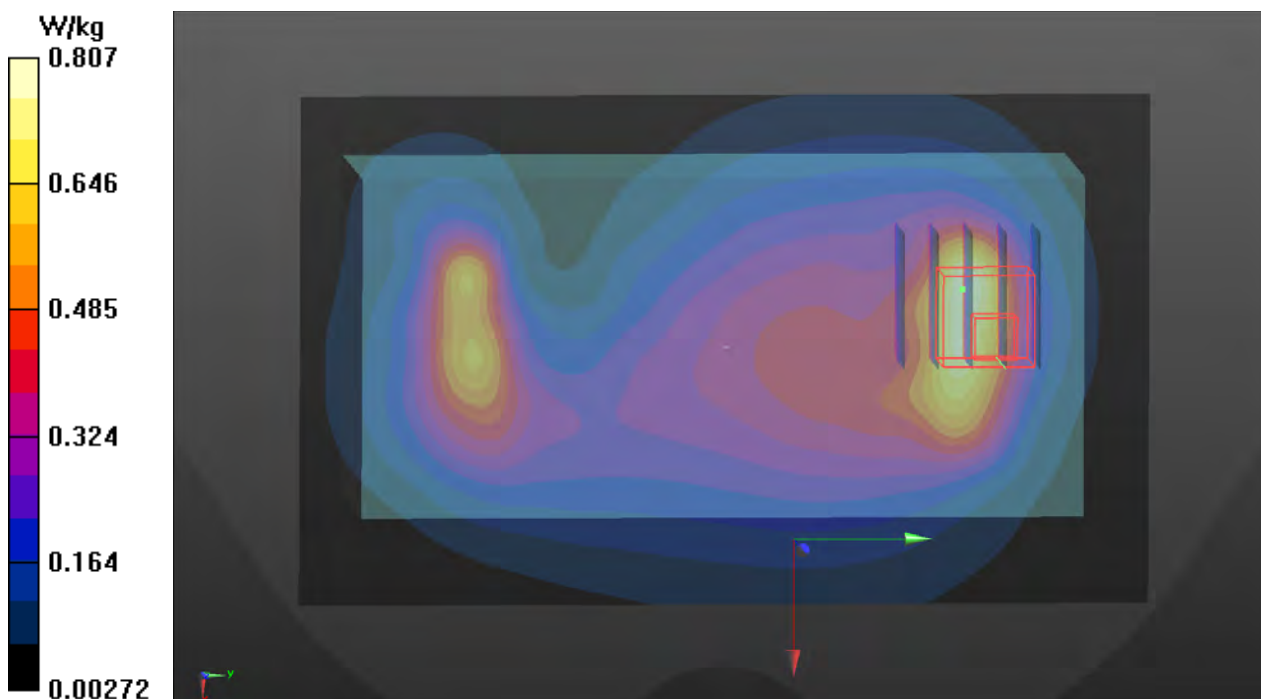
Communication System: UID 10175 - CAG, LTE-FDD (SC-FDMA, 1 RB, 10 MHz, QPSK);  
Frequency: 782 MHz; Duty Cycle: 1:3.74  
Medium: H06T09N2\_1203 Medium parameters used:  $f = 782$  MHz;  $\sigma = 0.937$  S/m;  $\epsilon_r = 43.348$ ;  $\rho = 1000$  kg/m<sup>3</sup>  
Ambient Temperature : 23.6 °C ; Liquid Temperature : 23.2 °C

**DASY5 Configuration:**

- Probe: EX3DV4 - SN7554; ConvF(10.39, 10.39, 10.39) @ 782 MHz; Calibrated: 2020/09/28
- Sensor-Surface: 1.4mm (Mechanical Surface Detection)
- Electronics: DAE4 Sn1590; Calibrated: 2020/09/15
- Phantom: Twin SAM Phantom\_1986; Type: QD 000 P40 CD;
- Measurement SW: DASY52, Version 52.10 (4); SEMCAD X Version 14.6.14 (7483)

**Area Scan (81x141x1):** Interpolated grid: dx=1.500 mm, dy=1.500 mm  
Maximum value of SAR (interpolated) = 0.807 W/kg

**Zoom Scan (5x5x7)/Cube 0:** Measurement grid: dx=8mm, dy=8mm, dz=5mm  
Reference Value = 28.38 V/m; Power Drift = -0.12 dB  
Peak SAR (extrapolated) = 0.939 W/kg  
**SAR(1 g) = 0.475 W/kg; SAR(10 g) = 0.286 W/kg** (SAR corrected for target medium)  
Smallest distance from peaks to all points 3 dB below = 17.2 mm  
Ratio of SAR at M2 to SAR at M1 = 54.5%  
Maximum value of SAR (measured) = 0.767 W/kg



### P10 LTE 25\_QPSK20M\_Rear Face\_0mm\_Ch26365\_1RB\_OS50

**DUT: 201118C03**

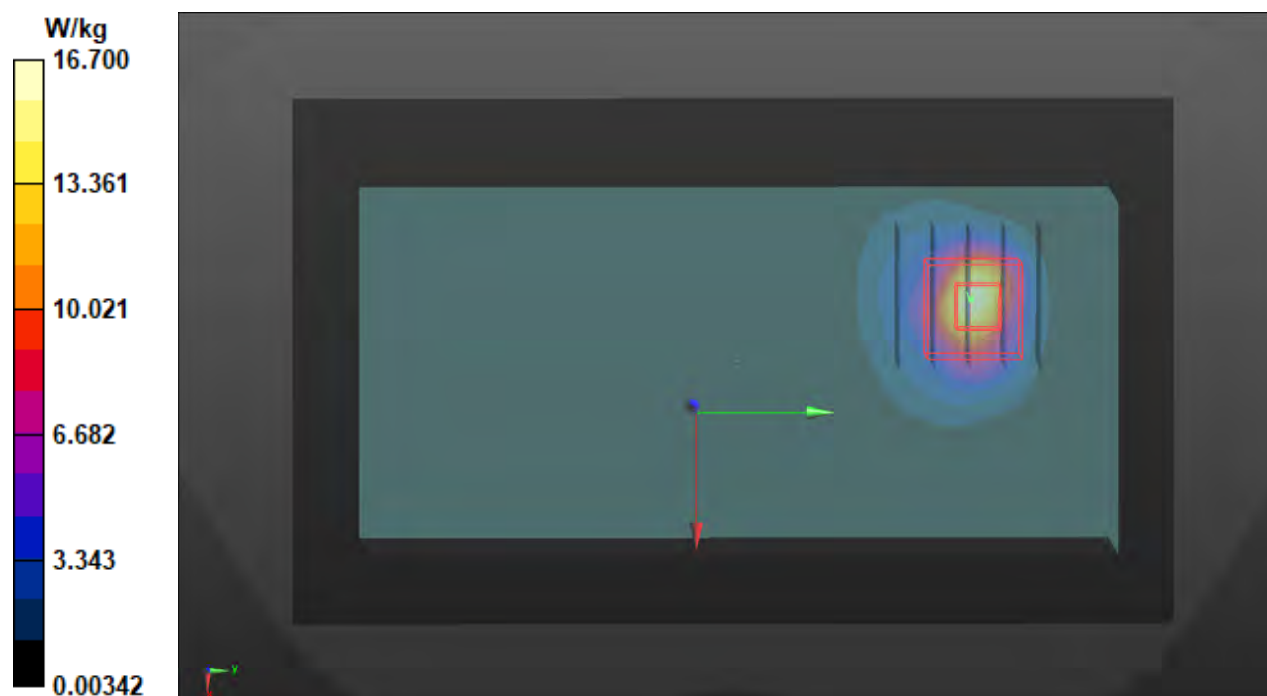
Communication System: UID 10169 - CAE, LTE-FDD (SC-FDMA, 1 RB, 20 MHz, QPSK);  
Frequency: 1882.5 MHz; Duty Cycle: 1:3.74  
Medium: H16T20N1\_1208 Medium parameters used:  $f = 1882.5$  MHz;  $\sigma = 1.444$  S/m;  $\epsilon_r = 39.29$ ;  $\rho = 1000$  kg/m<sup>3</sup>  
Ambient Temperature : 23.5 °C; Liquid Temperature : 23.1 °C

DASY5 Configuration:

- Probe: EX3DV4 - SN7555; ConvF(8.42, 8.42, 8.42) @ 1882.5 MHz; Calibrated: 2020/09/28
- Sensor-Surface: 1.4mm (Mechanical Surface Detection)
- Electronics: DAE4 Sn1589; Calibrated: 2020/09/15
- Phantom: SAM Phantom\_1987; Type: QD 000 P41 AA;
- Measurement SW: DASY52, Version 52.10 (4); SEMCAD X Version 14.6.14 (7483)

**Area Scan (81x141x1):** Interpolated grid: dx=1.500 mm, dy=1.500 mm  
Maximum value of SAR (interpolated) = 16.7 W/kg

**Zoom Scan (5x5x7)/Cube 0:** Measurement grid: dx=8mm, dy=8mm, dz=5mm  
Reference Value = 91.95 V/m; Power Drift = -0.10 dB  
Peak SAR (extrapolated) = 18.8 W/kg  
**SAR(1 g) = 8.04 W/kg; SAR(10 g) = 3.58 W/kg** (SAR corrected for target medium)  
Smallest distance from peaks to all points 3 dB below = 8.2 mm  
Ratio of SAR at M2 to SAR at M1 = 42.9%  
Maximum value of SAR (measured) = 14.7 W/kg





## P11 LTE 26\_QPSK15M\_Right Side\_0mm\_Ch26965\_1RB\_OS37

**DUT: 201118C03**

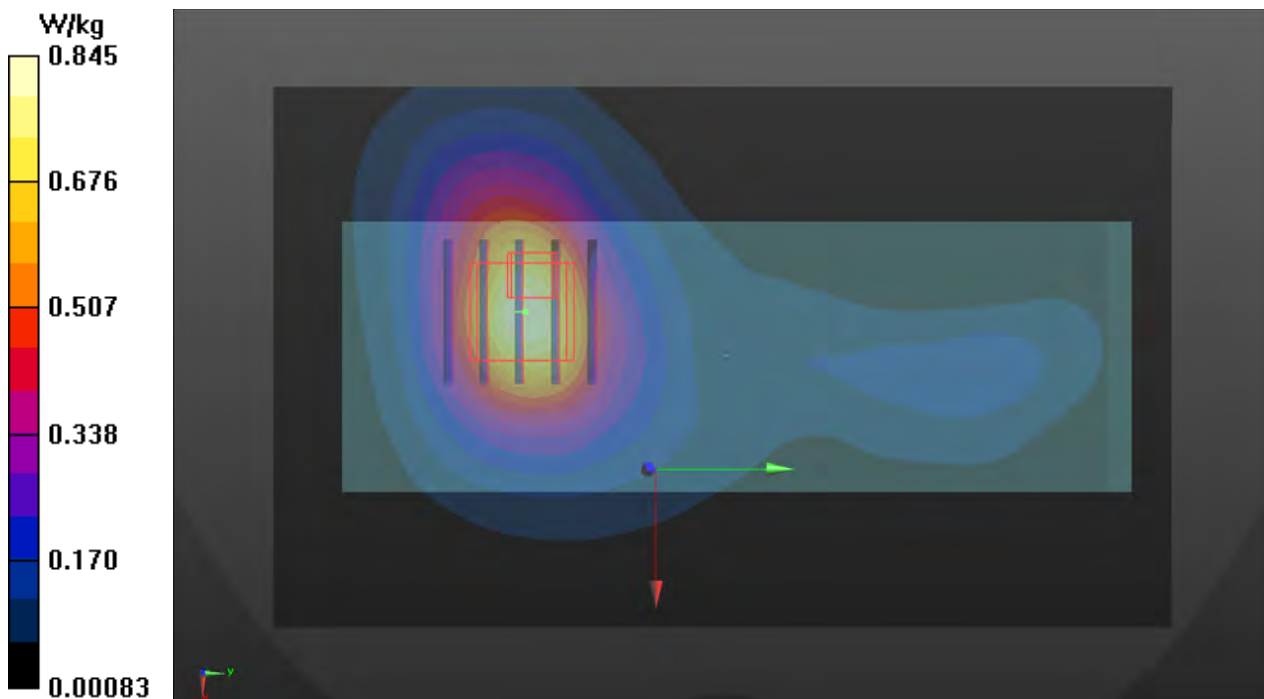
Communication System: UID 10181 - CAE, LTE-FDD (SC-FDMA, 1 RB, 15 MHz, QPSK);  
Frequency: 841.5 MHz; Duty Cycle: 1:3.74  
Medium: H07T10N1\_1203 Medium parameters used (interpolated):  $f = 841.5$  MHz;  $\sigma = 0.914$  S/m;  
 $\epsilon_r = 42.609$ ;  $\rho = 1000$  kg/m<sup>3</sup>  
Ambient Temperature : 23.6 °C ; Liquid Temperature : 23.2 °C

### DASY5 Configuration:

- Probe: EX3DV4 - SN7554; ConvF(10.05, 10.05, 10.05) @ 841.5 MHz; Calibrated: 2020/09/28
- Sensor-Surface: 1.4mm (Mechanical Surface Detection)
- Electronics: DAE4 Sn1590; Calibrated: 2020/09/15
- Phantom: Twin SAM Phantom\_1986; Type: QD 000 P40 CD;
- Measurement SW: DASY52, Version 52.10 (4); SEMCAD X Version 14.6.14 (7483)

**Area Scan (81x141x1):** Interpolated grid: dx=1.500 mm, dy=1.500 mm  
Maximum value of SAR (interpolated) = 0.845 W/kg

**Zoom Scan (5x5x7)/Cube 0:** Measurement grid: dx=8mm, dy=8mm, dz=5mm  
Reference Value = 29.34 V/m; Power Drift = -0.01 dB  
Peak SAR (extrapolated) = 0.985 W/kg  
**SAR(1 g) = 0.605 W/kg; SAR(10 g) = 0.384 W/kg** (SAR corrected for target medium)  
Smallest distance from peaks to all points 3 dB below = 8.8 mm  
Ratio of SAR at M2 to SAR at M1 = 63%  
Maximum value of SAR (measured) = 0.832 W/kg





## P12 LTE 38\_QPSK20M\_Rear Face\_0mm\_Ch38150\_1RB\_OS50

**DUT: 201118C03**

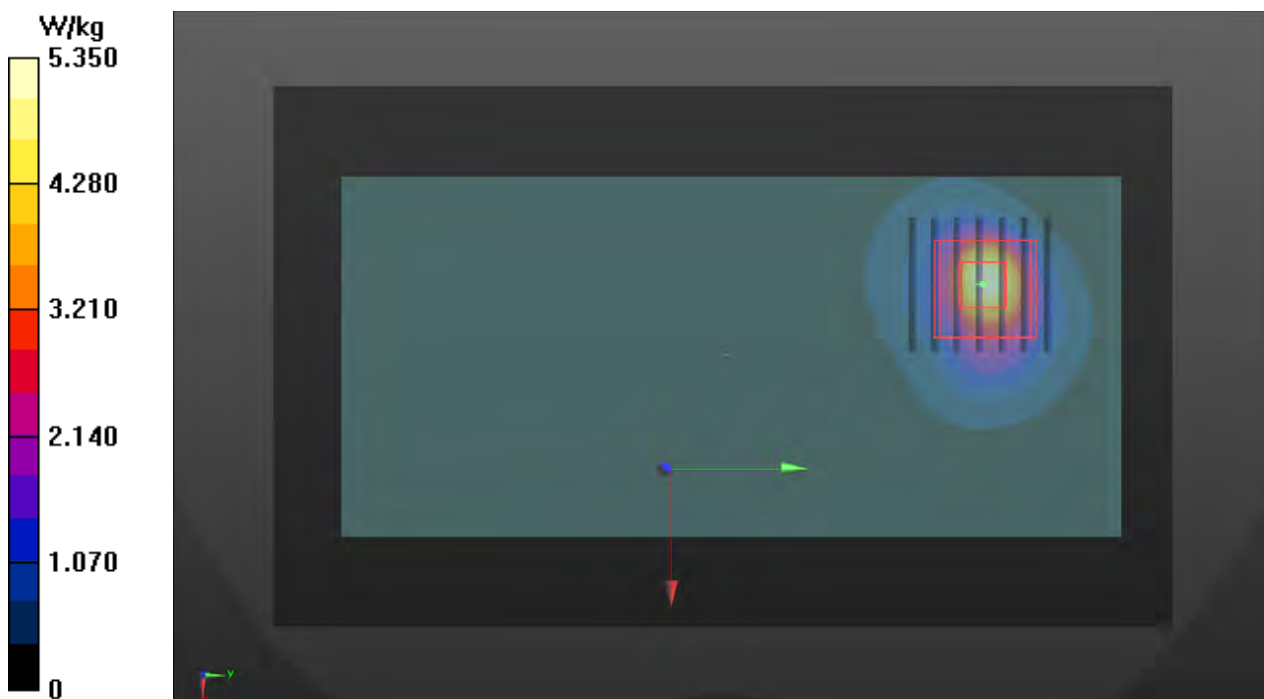
Communication System: UID 10172 - CAG, LTE-TDD (SC-FDMA, 1 RB, 20 MHz, QPSK);  
Frequency: 2610 MHz; Duty Cycle: 1:8.33  
Medium: H19T27N1\_1204 Medium parameters used (interpolated):  $f = 2610$  MHz;  $\sigma = 2.061$  S/m;  
 $\epsilon_r = 38.96$ ;  $\rho = 1000$  kg/m<sup>3</sup>  
Ambient Temperature : 23.6 °C ; Liquid Temperature : 23.3 °C

### DASY5 Configuration:

- Probe: EX3DV4 - SN7554; ConvF(7.28, 7.28, 7.28) @ 2610 MHz; Calibrated: 2020/09/28
- Sensor-Surface: 1.4mm (Mechanical Surface Detection)
- Electronics: DAE4 Sn1590; Calibrated: 2020/09/15
- Phantom: Twin SAM Phantom\_1986; Type: QD 000 P40 CD;
- Measurement SW: DASY52, Version 52.10 (4); SEMCAD X Version 14.6.14 (7483)

**Area Scan (101x171x1):** Interpolated grid: dx=1.200 mm, dy=1.200 mm  
Maximum value of SAR (interpolated) = 5.35 W/kg

**Zoom Scan (7x7x7)/Cube 0:** Measurement grid: dx=5mm, dy=5mm, dz=5mm  
Reference Value = 50.68 V/m; Power Drift = 0.10 dB  
Peak SAR (extrapolated) = 6.98 W/kg  
**SAR(1 g) = 3.08 W/kg; SAR(10 g) = 1.37 W/kg** (SAR corrected for target medium)  
Smallest distance from peaks to all points 3 dB below = 8.1 mm  
Ratio of SAR at M2 to SAR at M1 = 47.9%  
Maximum value of SAR (measured) = 5.61 W/kg



### P14 LTE 41\_QPSK20M\_Rear Face\_0mm\_Ch41055\_1RB\_OS50

**DUT: 201118C03**

Communication System: UID 10172 - CAG, LTE-TDD (SC-FDMA, 1 RB, 20 MHz, QPSK);  
Frequency: 2636.5 MHz; Duty Cycle: 1:8.33  
Medium: H19T27N1\_1204 Medium parameters used (interpolated):  $f = 2636.5$  MHz;  $\sigma = 2.088$  S/m;  $\epsilon_r = 38.873$ ;  $\rho = 1000$  kg/m<sup>3</sup>  
Ambient Temperature : 23.6 °C ; Liquid Temperature : 23.3 °C

**DASY5 Configuration:**

- Probe: EX3DV4 - SN7554; ConvF(7.28, 7.28, 7.28) @ 2636.5 MHz; Calibrated: 2020/09/28
- Sensor-Surface: 1.4mm (Mechanical Surface Detection)
- Electronics: DAE4 Sn1590; Calibrated: 2020/09/15
- Phantom: Twin SAM Phantom\_1986; Type: QD 000 P40 CD;
- Measurement SW: DASY52, Version 52.10 (4); SEMCAD X Version 14.6.14 (7483)

**Area Scan (101x171x1):** Interpolated grid: dx=1.200 mm, dy=1.200 mm  
Maximum value of SAR (interpolated) = 5.63 W/kg

**Zoom Scan (7x7x7)/Cube 0:** Measurement grid: dx=5mm, dy=5mm, dz=5mm  
Reference Value = 51.94 V/m; Power Drift = 0.18 dB  
Peak SAR (extrapolated) = 7.09 W/kg  
**SAR(1 g) = 3.25 W/kg; SAR(10 g) = 1.45 W/kg** (SAR corrected for target medium)  
Smallest distance from peaks to all points 3 dB below = 8.5 mm  
Ratio of SAR at M2 to SAR at M1 = 49.7%  
Maximum value of SAR (measured) = 5.73 W/kg

