

# 納入仕様書

## Specifications for delivery

名称:Futaba Wifi AntennaE1, E2, E3

Name:MAF94228, MAF94267, MAF95265

1. 本仕様書は LAIRD TECHNOLOGIES. が製造し、双葉電子工業株式会社殿に納入する Wifi Antenna に関する仕様(製品規格、納入形態)等について規定したものです。

This specification of a product named Wifi Antenna that LAIRD TECHNOLOGIES JAPAN INC. sells to Futaba Corporation defines its product standards, the method of delivery, and so on.

2. 適用製品/ Applied product name

Futaba Wifi Antenna E1, E2,E3 ; MAF94190, MAF94267, MAF95265

3. 寸法規格/ Dimension standards

添付図面 参照/Refer attached drawing.

4. 電気特性/ Electrical Characteristics

VSWR: <2:1 (2.4GHz-2.5GHz)

Gain: 1.5dBi (Max)

5. 納入仕様/ Specifications of delivery

(1)梱包/ packaging

包装形態:20本を内梱包ビニール袋に梱包する。そのビニール袋を外ダンボール箱に梱包し、テープで密閉する。ラベルは内梱包ビニール袋及びダンボール箱に各1枚添付する。

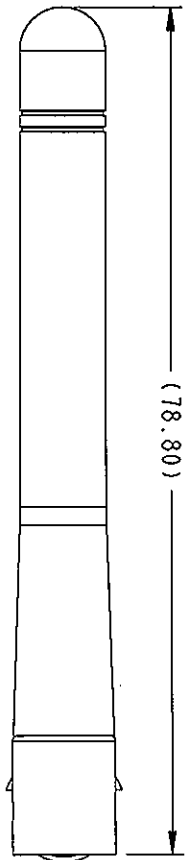
Packing form: Pack 20 pcs into a plastic bag. And pack outer carton box after putting plastic bags. It appends one label each to a plastic bag and a box.

(2)表示/ Indication

別紙 梱包及び表示の詳細参照

6. コネクタのプラグ・リセプタクルの動作確認については添付の参考資料参照のこと。(動作を保証するものではありません)

# APPROVED



(88.95)

MAP66011  
SHEATH

6.45±0.05

2.00

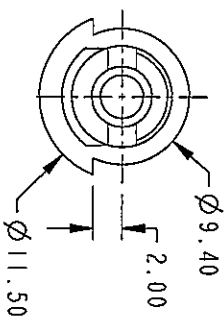
∅ 7.00±0.05  
∅ 1.13 COAX CABLE ASS'Y  
WITH R/A 1-PEX

PRE-TIN ON BRAID  
& CENTER CONDUCTOR

CONN. ORIENTATION "A"  
CONN. ORIENTATION "B"

MAP60079  
UPPER KNUCKLE

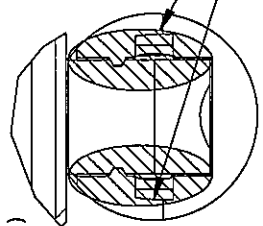
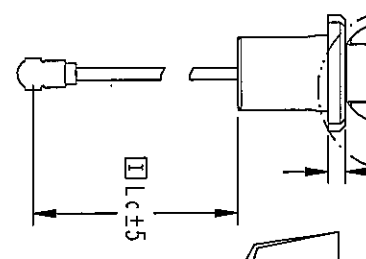
MAP60078  
LOWER KNUCKLE



BOTTOM VIEW: LOWER KNUCKLE  
SCALE 2.000

SEE DETAIL A

**CAUTION:** EXCESSIVE FUTABA SUPPLIED GREASE (MMP20034) IS NOT ALLOWED AT THESE AREAS. REFER LIMIT SAMPLE.



DETAIL A  
SCALE 3.000

TABLE 1

LAIRD TECH. PART NO.-REV.	FUTABA PART NO.	DESCRIPTION	Lc	CONN. ORIENTATION	(SYM)
MAF94228-BI	9M99202201	ANTENNA E1	66	A	(F02)
MAF94267-BI	9M99202202	ANTENNA E2	66	B	(F02)
MAF95265-BI	9M99202203	ANTENNA E3	95	A	(F03)

TOLERANCE  
(UNLESS STATED)  
X = ±0.3  
XX = ±0.13  
ANGULAR = ± 30°

- PRODUCT & PROCESS MUST COMPLY TO LT-GES
- MISSING INFORMATION REFER TO 3D DATA
- DIMENSIONS ARE IN MILLIMETERS UNLESS STATED
- DIMENSIONAL
- THIS DRAWING WAS GENERATED VIA PRO/ENGINEER
- PRINT NOT TO SCALE

SYM	ECO/DESCRIPTION	DATE	CK	APP
(F01)	Configuration of pre-assembly method; change method; Added View and Conditions. Others: refer pg2 & pg3 for detail	16/09/08	CHIN	FONG
(F02)	ECO-00492	28/11/08	CHIN	FONG
(F03)	ECO-00528	31/03/09	CHIN	FONG

ANTENNA SUB  
PENANG, MALAYSIA

THE INFORMATION CONTAINED IN THIS DOCUMENT IS THE PROPERTY OF LAIRD TECHNOLOGIES. IT IS TO BE USED ONLY FOR THE PURPOSES AND UNDER THE CONDITIONS SPECIFIED IN THE DRAWING.

DESCRIPTION: FUTABA WIFI ANTENNA E FAMILY

© 2008 LAIRD TECHNOLOGIES

PROJECT NO. CMC0155	DATE: 16/09/08	SCALE: 1:500	UNITS: MM
---------------------	----------------	--------------	-----------

DRAWN BY: CHIN	CHECKED BY: FONG	DWG. NO.: MAF94417	PG. 1/3	REV. (F03)
----------------	------------------	--------------------	---------	------------

MATERIAL: N/A