

FUTABA corporation
Engineering Section 1
Radio Control Equipment Group
1080 Yabutsuka chousei-son chousei-gun
chiba 299-4395 JAPAN

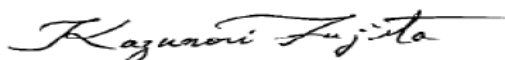
Declaration of Change

According to **178919 D01 Permissive Change Policy v04r06**, our change for FCC ID: AZPT2POK-24G is complied with C2PC policy and we would like to apply C2PC for FCC ID: AZPT2POK-24G. The different with original grant is changed assembly (control buttons) and host. RF and others' schematic are identical with original grant. For more detail change, please refer to following table.

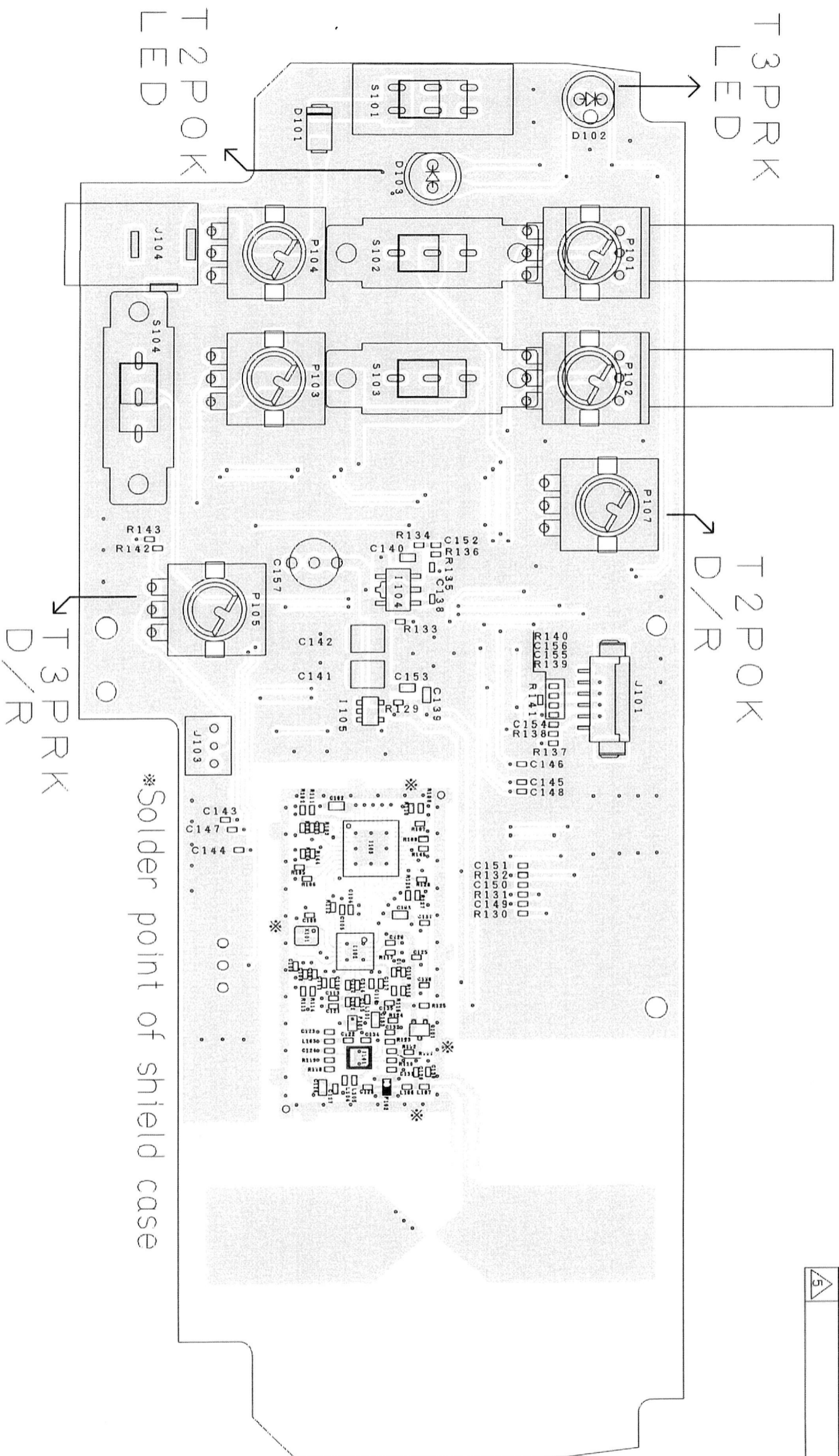
No	item	T2POK (original grant)	T3PRKA
1	Host	for T2POK only	for T3PRKA only
2	2ch EPA end point adjuster (adjust servo travel range)	none	support
3	3ch	none	support
4	1ch Dual Rate (adjust servo travel range)	placed the left upper of the wheel	placed the left under of the wheel
5	trim volume	placed top side of the case	placed front side of the case

For Item 2 and 3, T2POK and T3PRKA are use the same firmware but T3PRKA is built with new button then can support these functions and itwon't make any affect on RF power and modulation with original grant. For item 4 and 5 are control buttons' location different only. For assembly different, please refer to next page.

Group Manager



NO.	NOTE	CHARGE	DATE
NEW	-----	Jiahwang	2010. 09. 13
1	J102 and R144 deleted	Jiahwang	2010. 11. 10
2	D103 and P107 added	Jiahwang	2010. 11. 19
3	R144 and R145 added	Jiahwang	2010. 12. 28
4			
5			



*Solder point of shield case

名称	NAME	ASSEMBLY	ASSEMBLY	ASSEMBLY	ASSEMBLY	ASSEMBLY	ASSEMBLY	ASSEMBLY	ASSEMBLY
设计	DESIGN	叶嘉煌	10.12.28	叶嘉煌	10.12.28	叶嘉煌	10.12.28	叶嘉煌	10.12.28
制图	DRAWN	叶嘉煌	10.12.28	叶嘉煌	10.12.28	叶嘉煌	10.12.28	叶嘉煌	10.12.28
检查	CHECKED	叶嘉煌	10.12.28	叶嘉煌	10.12.28	叶嘉煌	10.12.28	叶嘉煌	10.12.28
承认	APPROVED	叶嘉煌	10.12.28	叶嘉煌	10.12.28	叶嘉煌	10.12.28	叶嘉煌	10.12.28
图番	DWG NO	1M60A056		1M60A056		1M60A056		1M60A056	
图号	SHEET	1		1		1		1	
基板名		PCB	PCB	PCB	PCB	PCB	PCB	PCB	PCB
名称		PCB	PCB	PCB	PCB	PCB	PCB	PCB	PCB
图号		1M60A056		1M60A056		1M60A056		1M60A056	
图番		1		1		1		1	
图号		1		1		1		1	
图番		1		1		1		1	
图号		1		1		1		1	
图番		1		1		1		1	

佐久間通 1/1.6

叶嘉煌 10.12.28

叶嘉煌 10.12.28

叶嘉煌 10.12.28

叶嘉煌 10.12.28

1M60A056

1

1

1

1

1

1

1

1

1

1

1

1

1

1

1

1

1

1

1

1

1

1

1

1

1

1

1

1

1

1

1

1

1

1

1

1

1

1

1

1

1

1

1

1

1

1

1

1

1

1

1

1

1

1

1

1

1

1

1

1

1

1

1

1

1

1

1

1

1

1

1

1

1

1

1

1

1

1

1

1

1

1

1

1

1

1

1

1

1

1

1

1

1

1

1

1

1

1

1

1

1

1

1

1

1

1

1

1

1

1

1

1

1

1

1

1

1

1

1

1

1

1

1

1

1

1

1

1

1

1

1

1

1

1

1

1

1

1

1

1

1

1

1

1

1

1

1

1

1

1

1

1

1

1

1

1

1

1

1

1

1

1

1

1

1

1

1

1

1

1

1

1

1

1

1

1

1

1

1

1

1

1

1

1

1

1

1

1

1

1

1

1

1

1

1

1

1

1

1

1

1

1

1

1

1

1

1

1

1

1

1

1

1

1

1

1

1

1

1

1

1

1

1

1

1