

EUT Internal Photos

*Figure 12
General Appearance (Antenna View)*



*Figure 13
Internal View of Antenna*

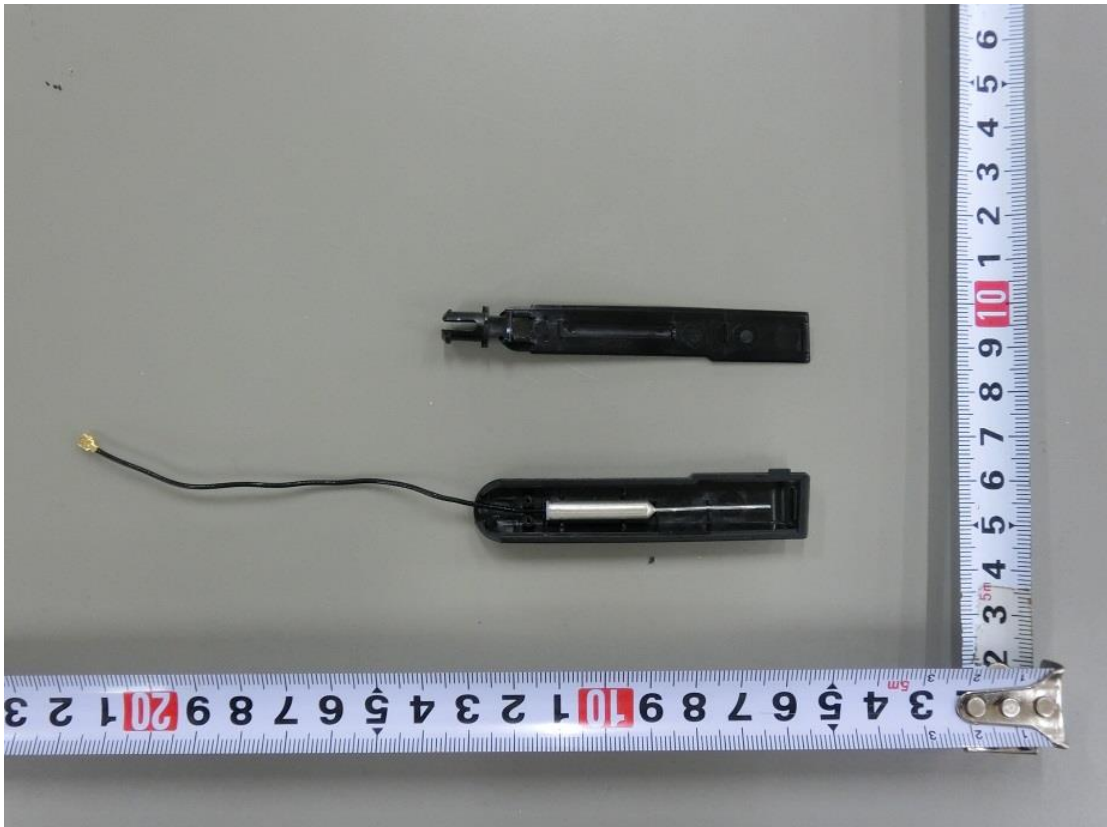


Figure 14
Internal View (Removed Battery Cover)



Figure 15
Internal View (Removed Battery)



Figure 16
Battery, Front & Side View

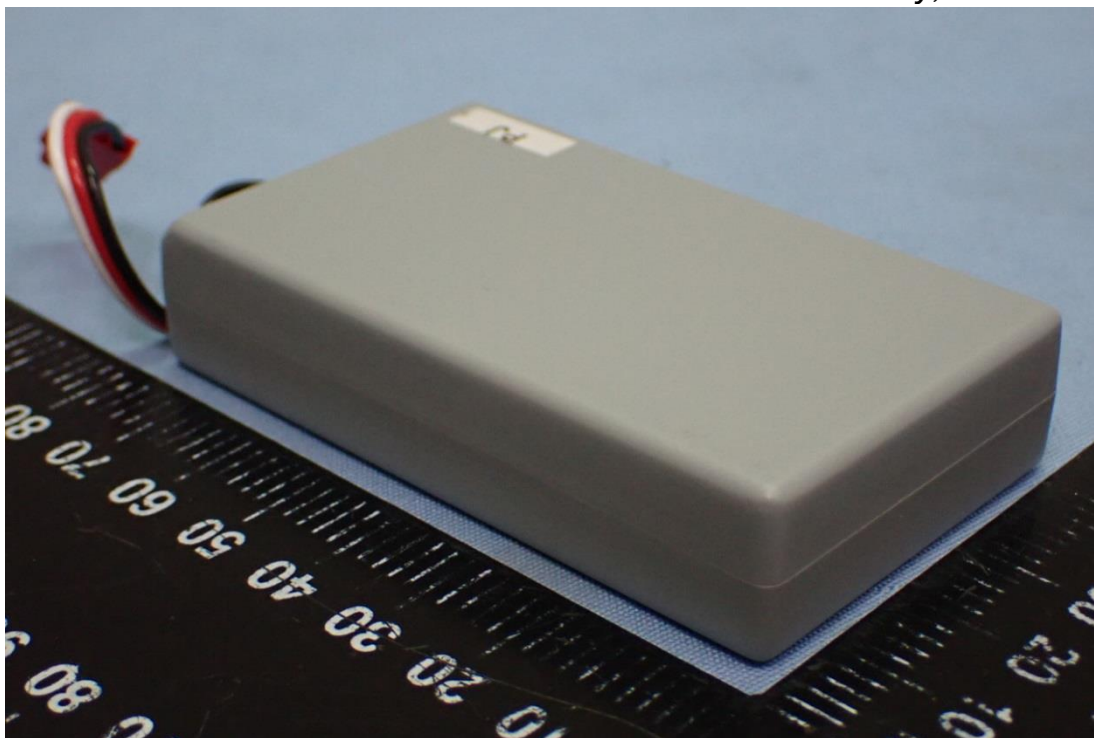


Figure 17
Battery, Back & Side View



Figure 18
Battery, Label View



Figure 19
Internal View (Removed Cover)

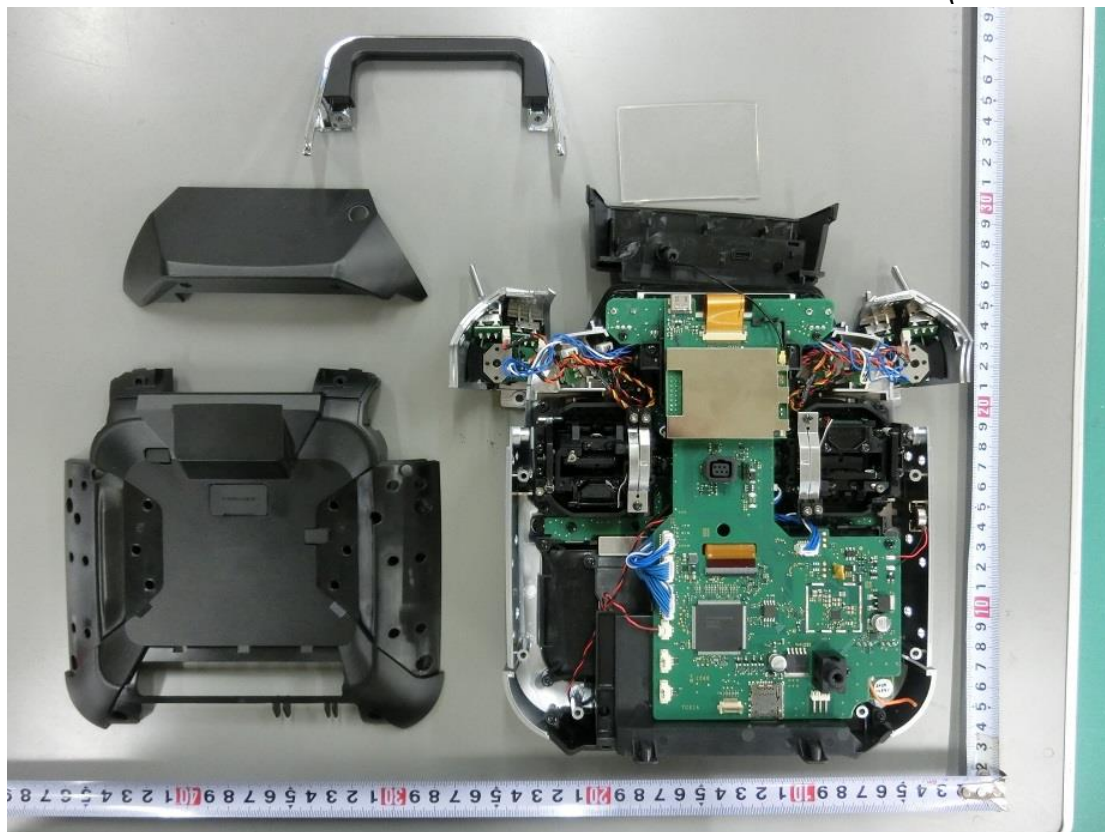


Figure 20
Internal View

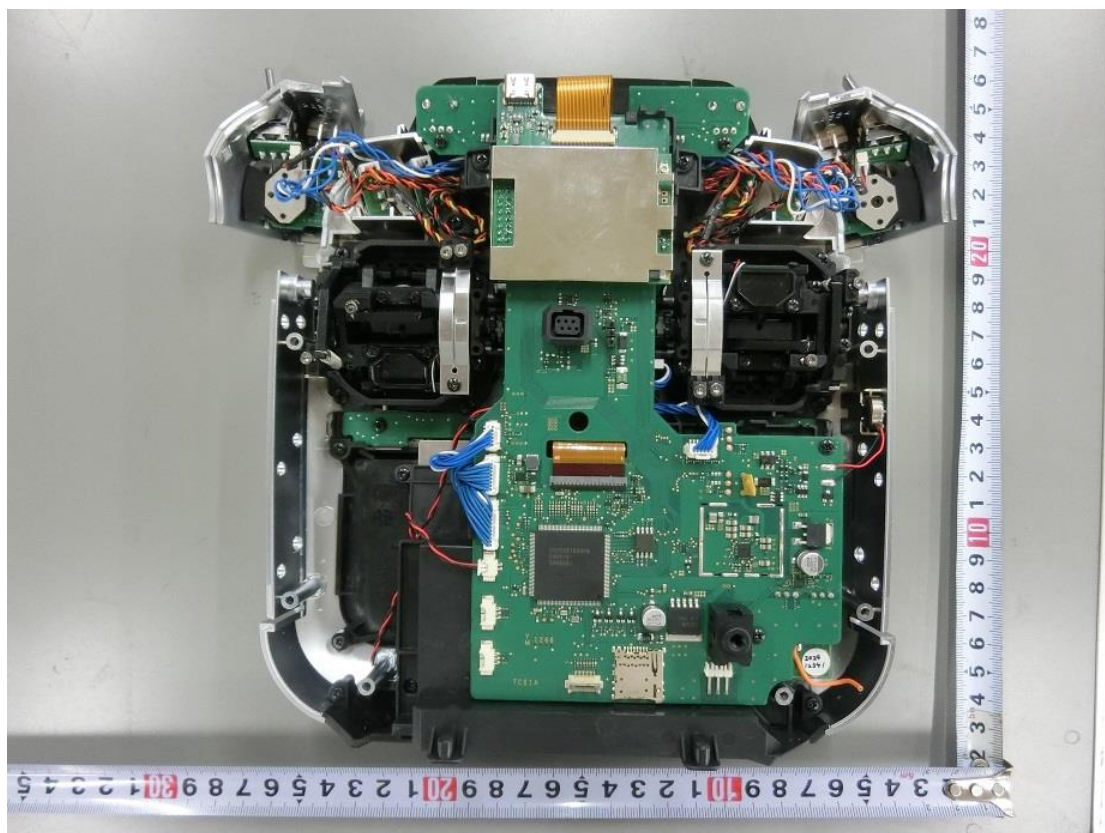


Figure 21
Internal View

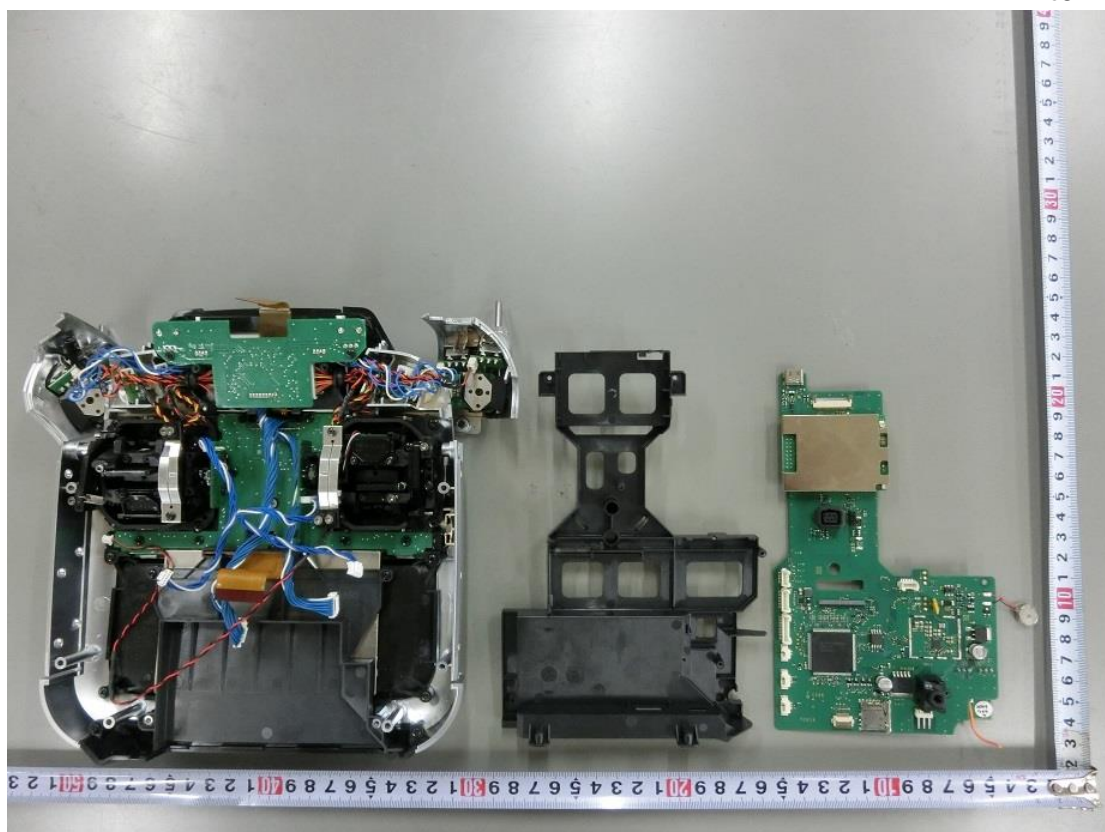


Figure 22
Internal View

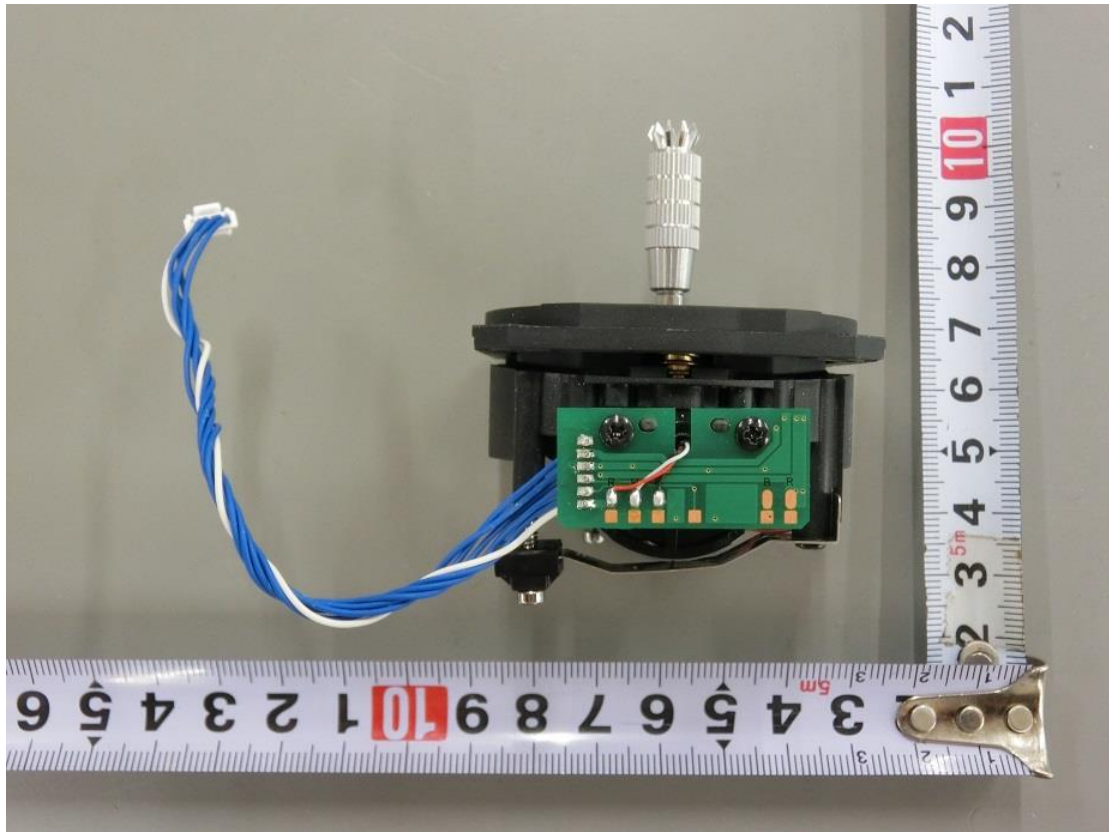


Figure 23
Internal View

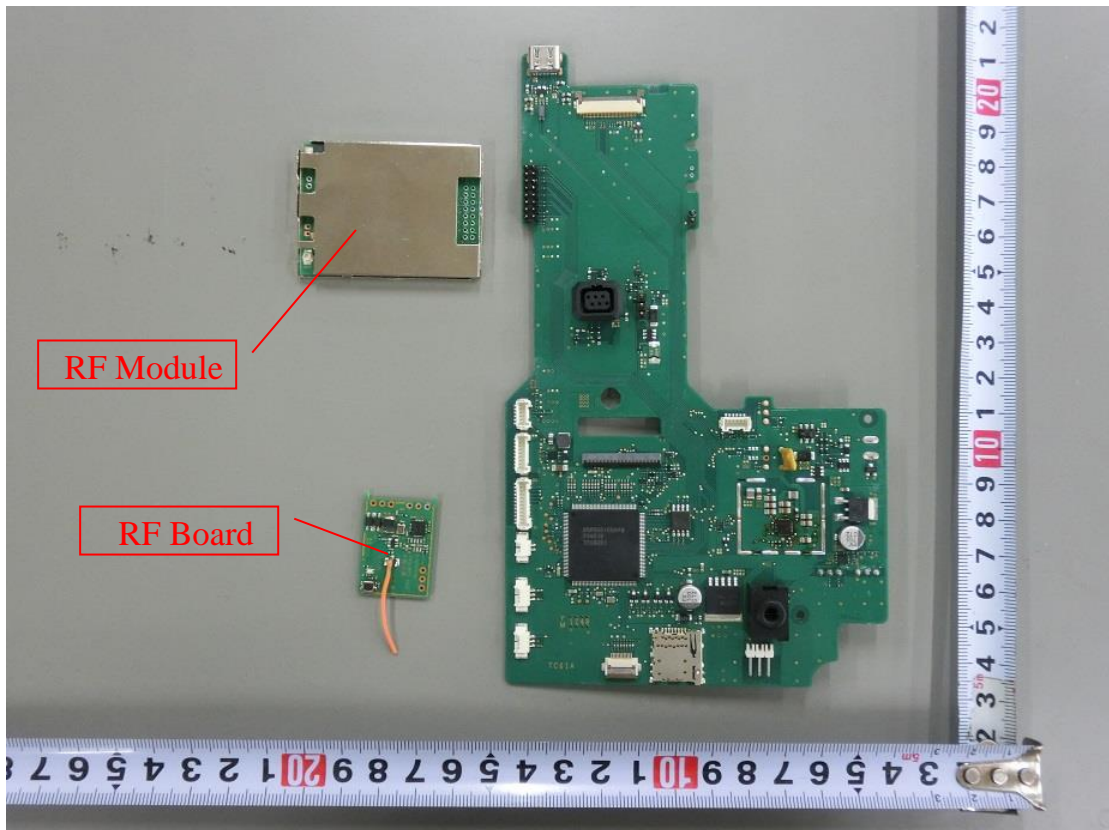


Figure 24
Panel #1 , Front View

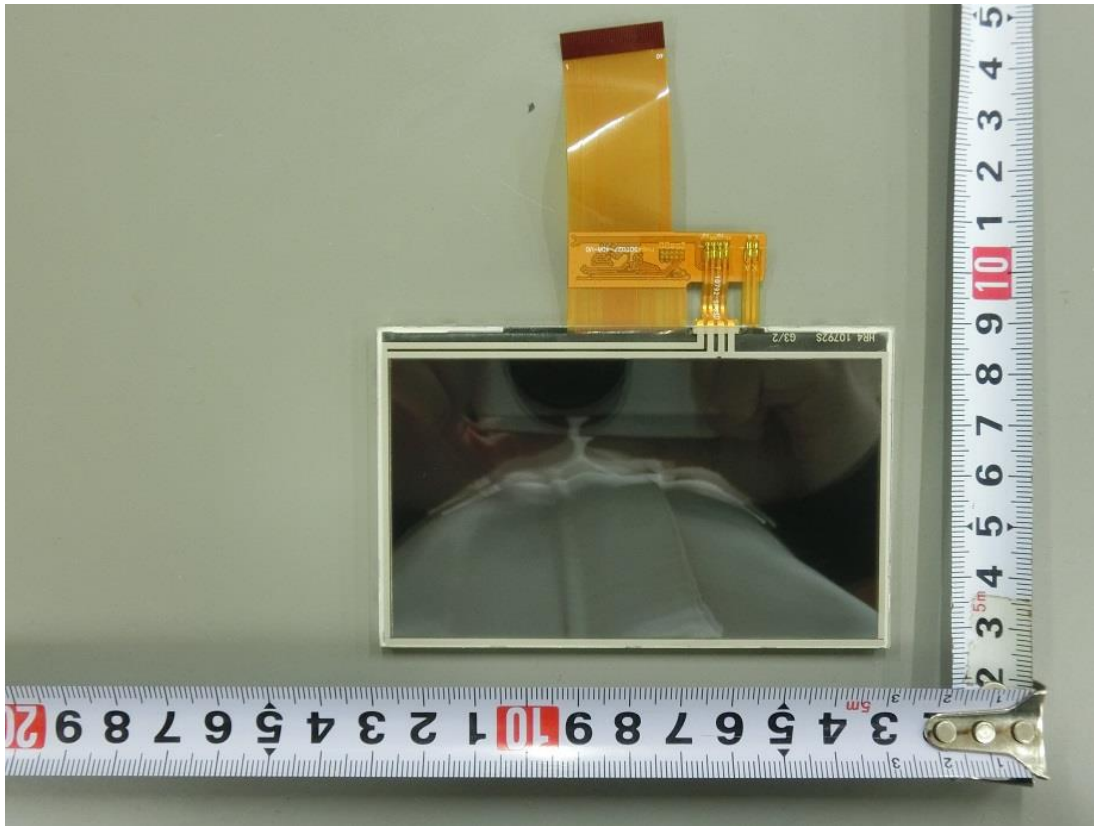


Figure 25
Panel #1, Back View

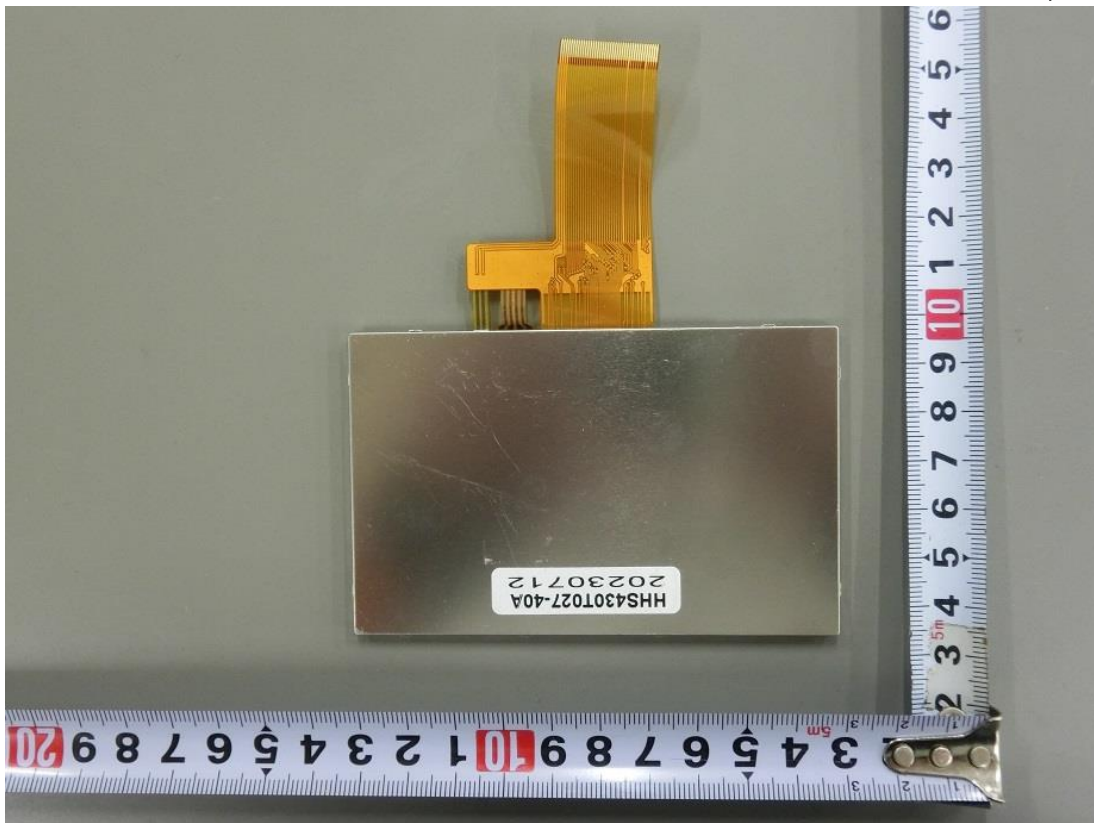


Figure 26
Panel #2, Front View



Figure 27
Panel #2, Back View



Figure 28
PCB, Front View

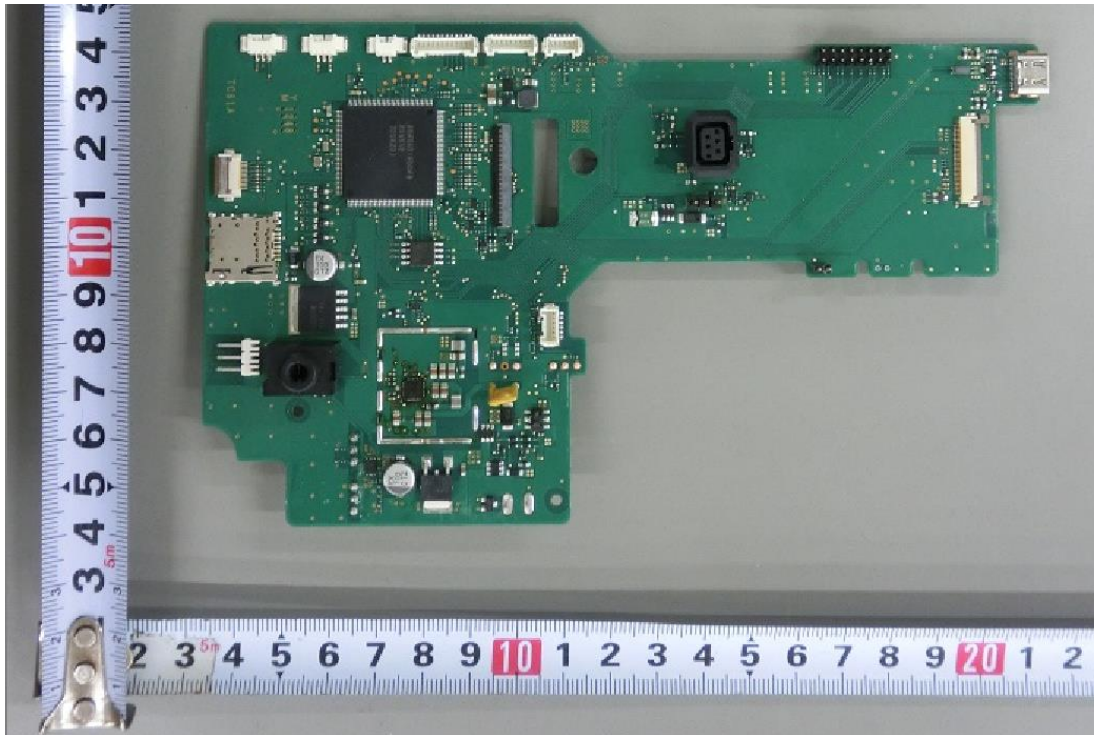


Figure 29
PCB, Back View

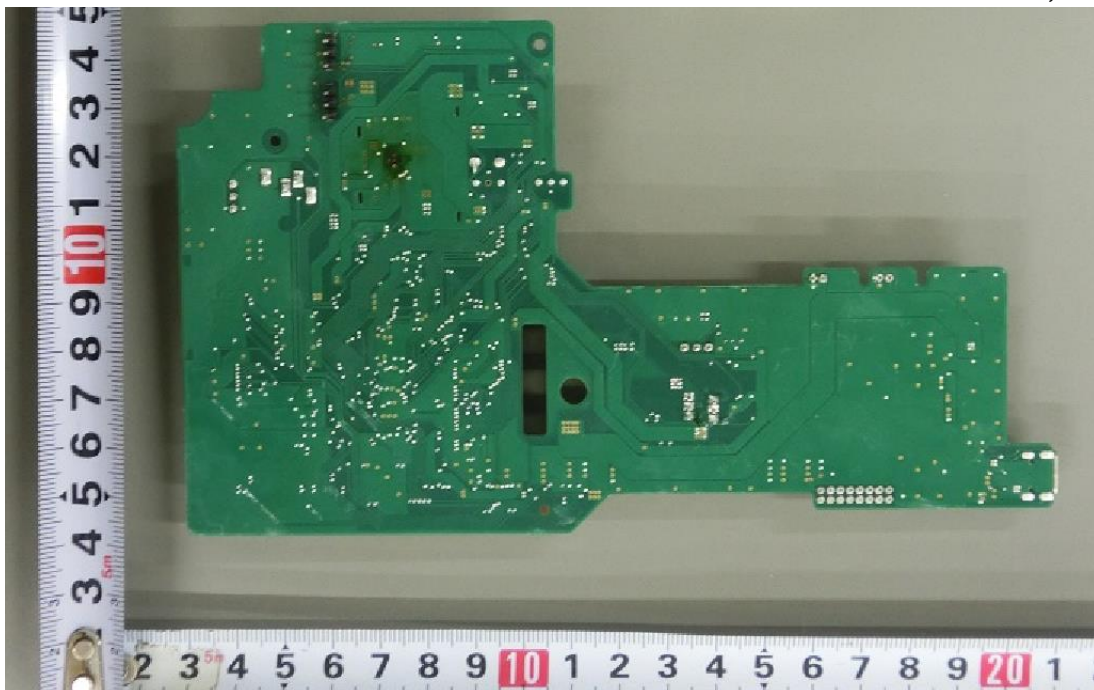


Figure 30
PCB, Front View

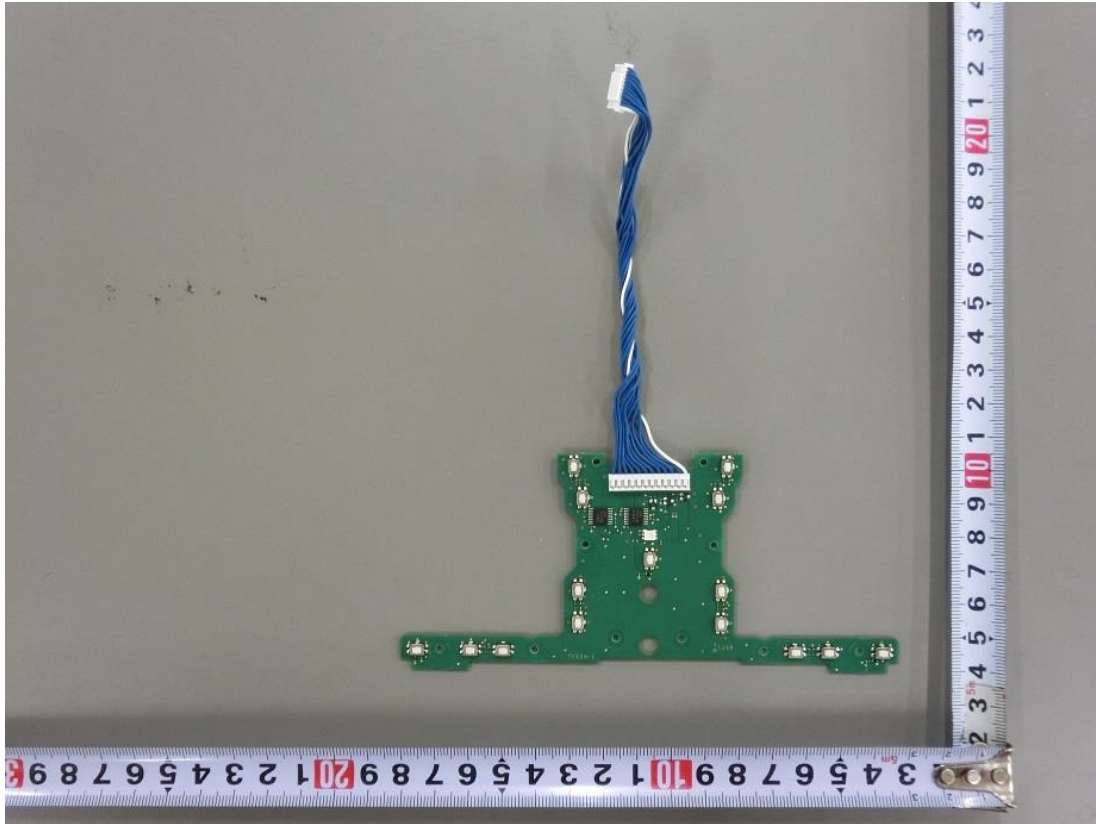


Figure 31
PCB, Back View

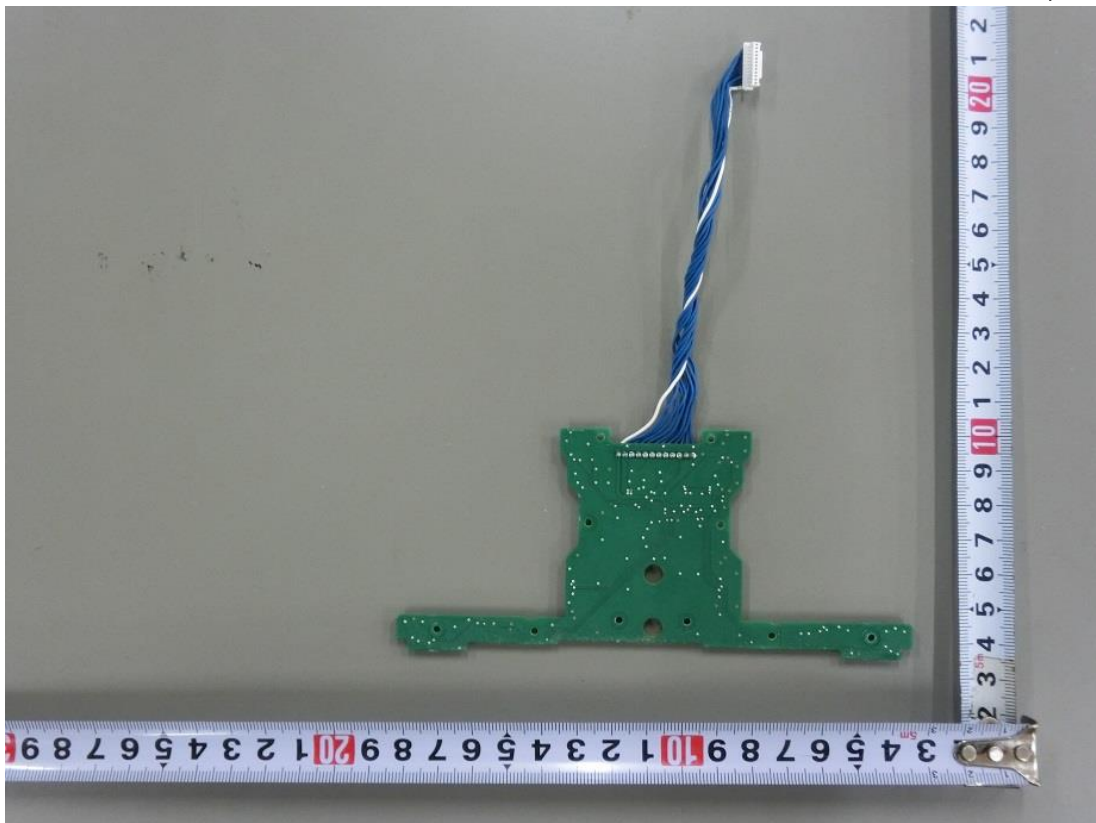


Figure 32
TC57A, RF Module, Front View

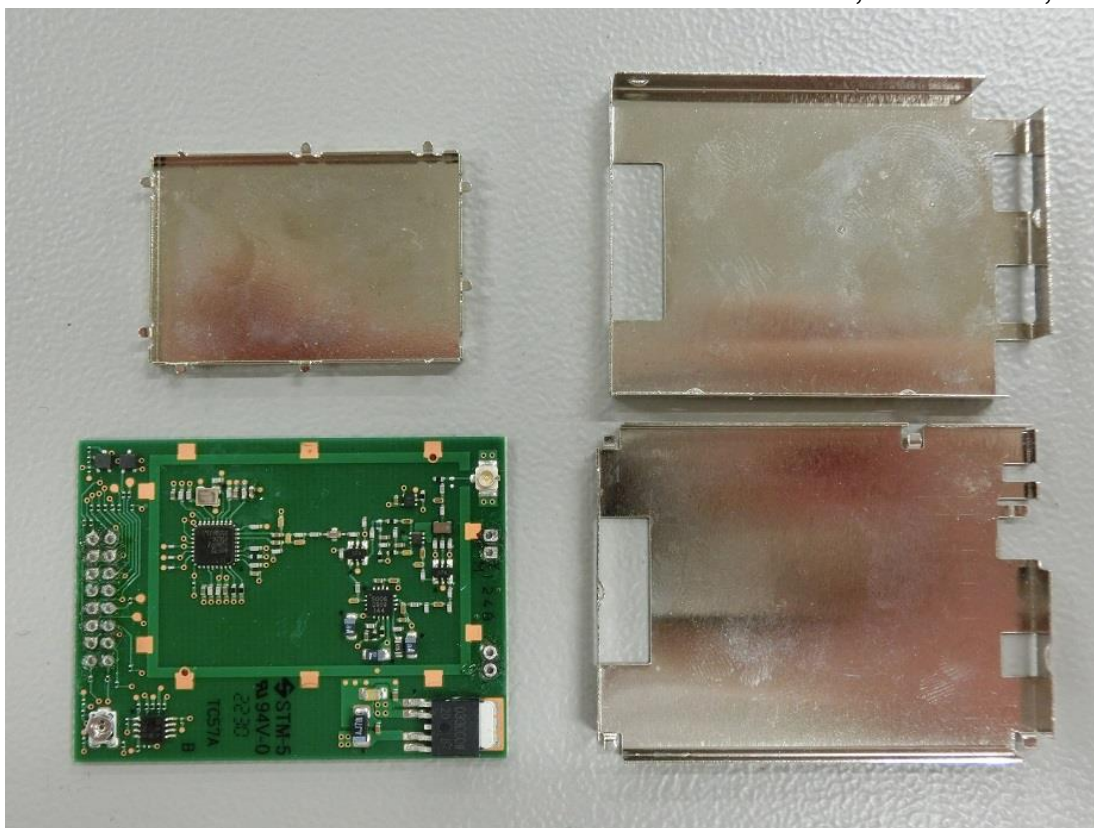


Figure 33
TC57A, RF Module, Back View

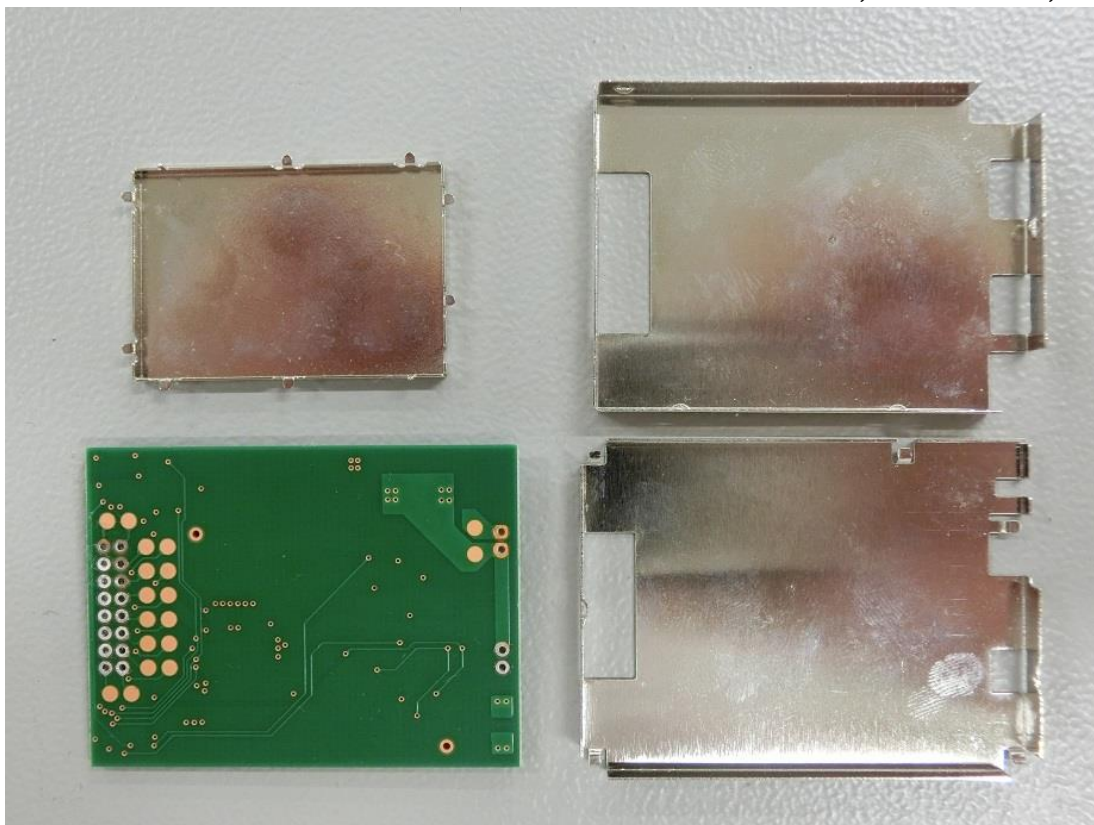


Figure 34
TC57A, RF IC (ADF7242) View

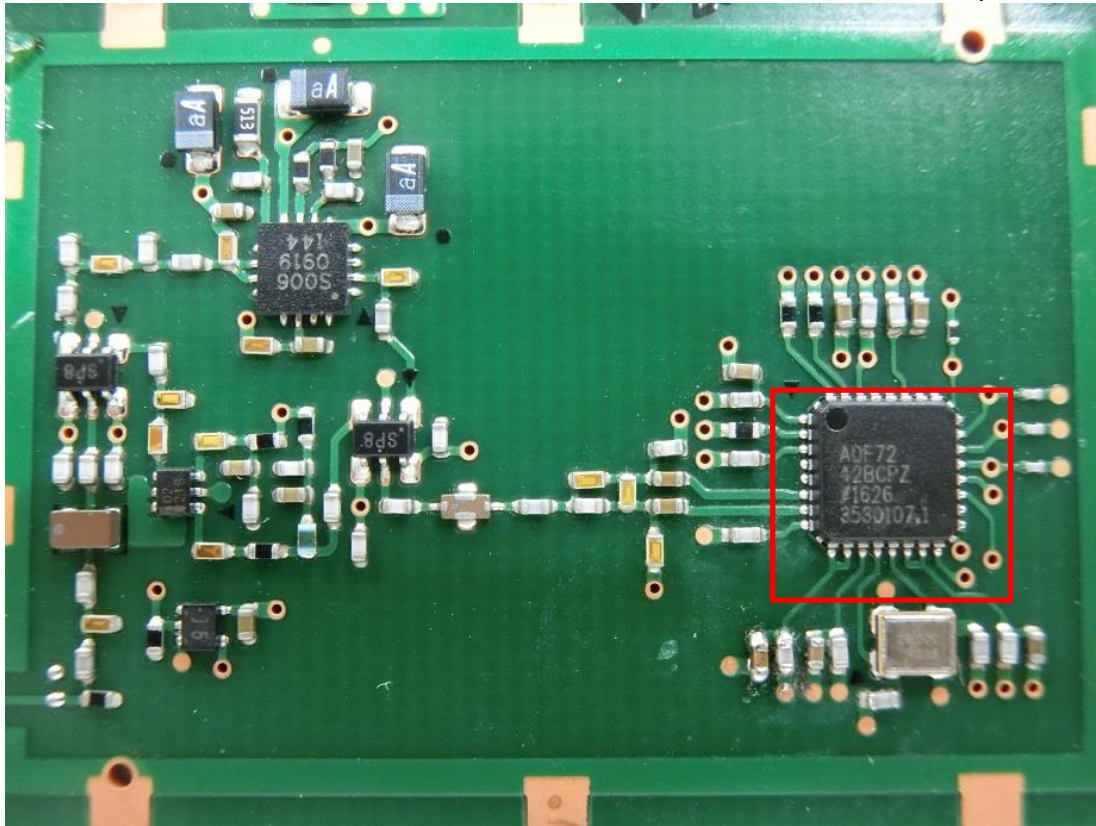


Figure 35
WTR-16, C-WIRE 0.08/30(0-2)WHITE 30SLM (copper wire Antenna) Antenna View



Figure 36
WTR-16, RF Board, Front View

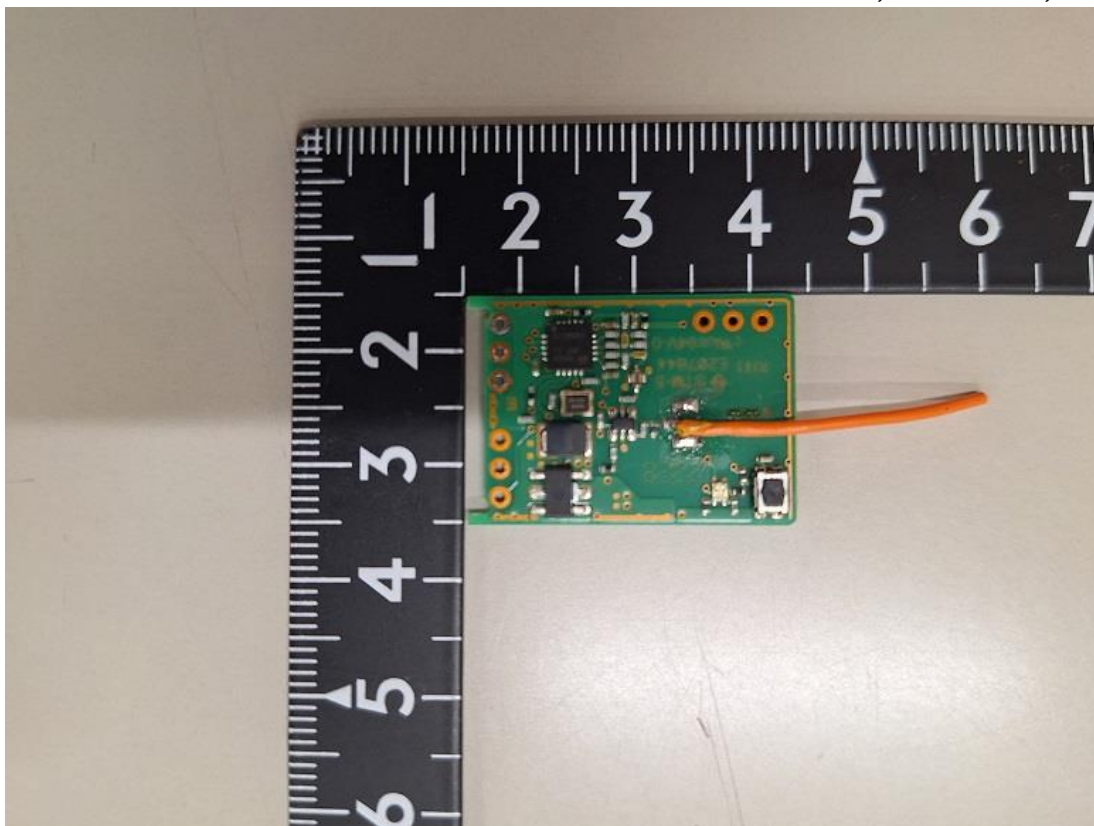


Figure 37
WTR-16, RF Board, Back View

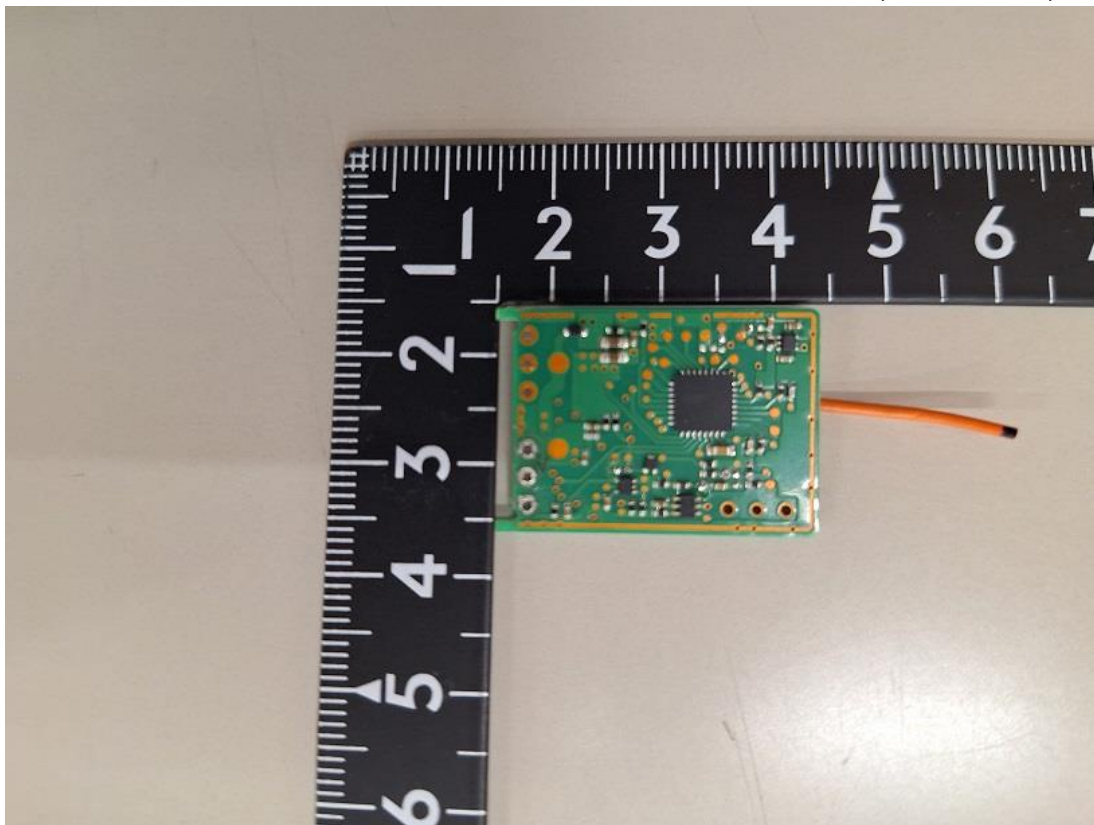


Figure 38
WTR-16, RF IC (CC2500)View

