

EUT Internal Photos

Figure 3  
Internal View (I/O View)

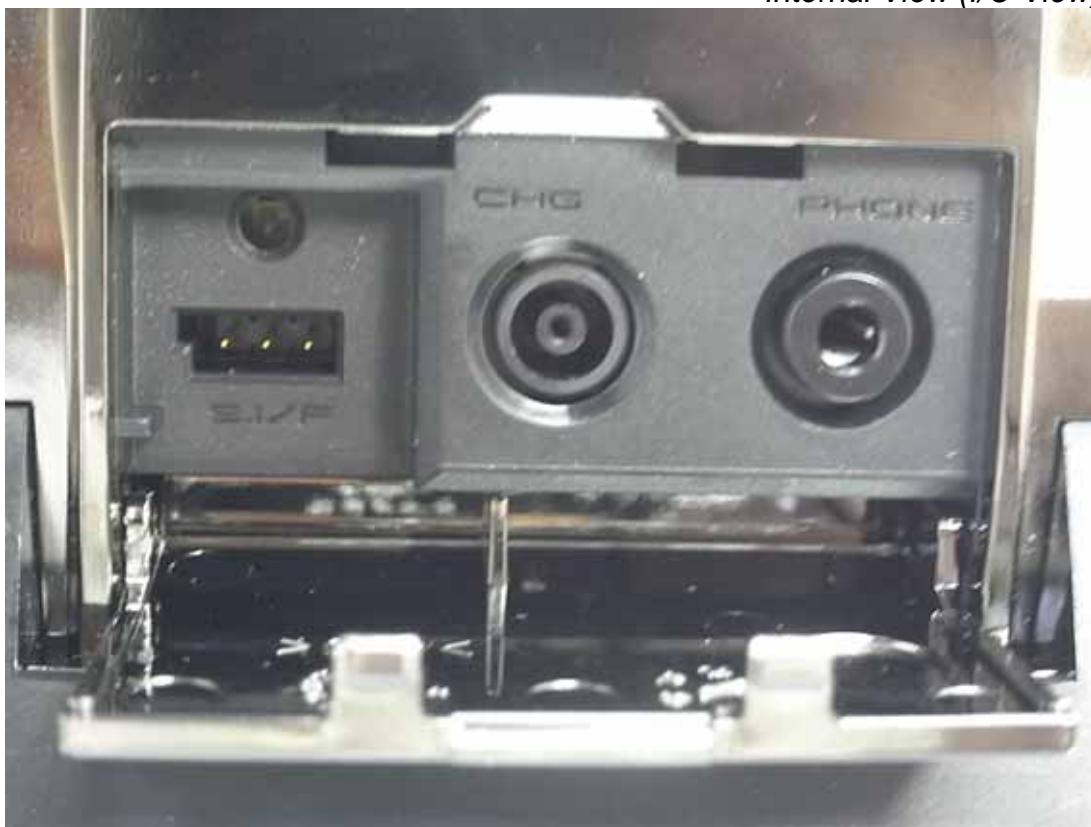


Figure 4  
Internal View (I/O View)



Figure 5  
Internal View (I/O View)



Figure 6  
Internal View (Removed Battery)



**⚠ DANGER**

If you ignore the following safety precautions, it may cause a fire, explosion, or overheating, resulting in the leakage of electrolyte fluid or swelling on electrical parts.

- Do not short-circuit the battery or connect it to a power source.
- Do not touch the battery or its leads when it is hot.
- Do not throw the battery or its leads into a fire.
- Do not use the battery or its leads for anything other than its intended purpose.
- Do not use the battery or its leads for anything other than its intended purpose.
- Do not use the battery or its leads for anything other than its intended purpose.

● If the electrolyte fluid gets into your eyes, flush them out with clean water without rubbing them, and see a doctor immediately.

**⚠ 危險**

下列的注意事項若無照此正確步驟執行，可能會導致火災、爆炸、過熱、漏液、膨脹、洩漏等的情況發生。

- 切勿將電池正負極短接，或與電源連接。
- 切勿將電池正負極與任何電源連接。
- 切勿將電池正負極投入火中。
- 切勿將電池正負極用於任何非預期用途。
- 切勿將電池正負極用於任何非預期用途。
- 切勿將電池正負極用於任何非預期用途。

● 若電解液液體沾到眼睛，請立即用清水沖洗，切勿揉搓，並請儘速就醫。

*Figure 7*  
*Internal View (Removed Bottom Cover)*



*Figure 8*  
*Internal View (Removed Cover)*



Figure 9  
Internal View



Figure 10  
Internal View

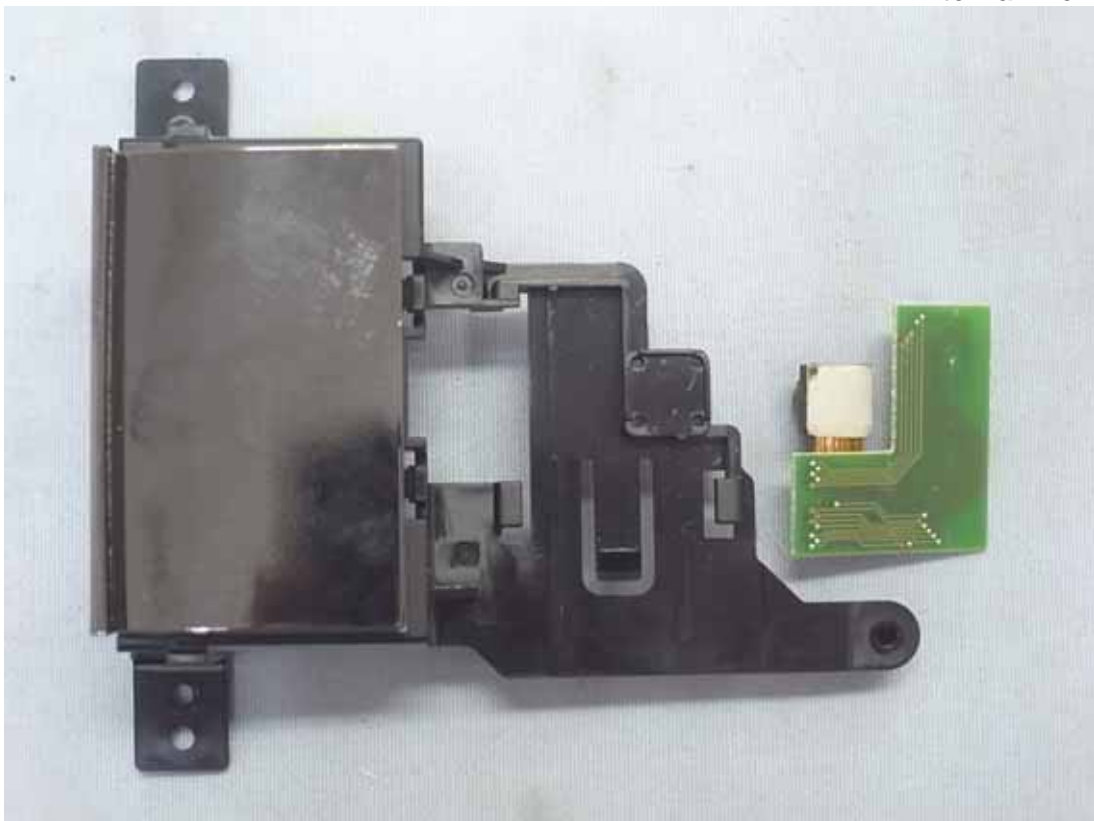


Figure 11  
Internal View



Figure 12  
Internal View



Figure 13  
Internal View



Figure 14  
Internal View

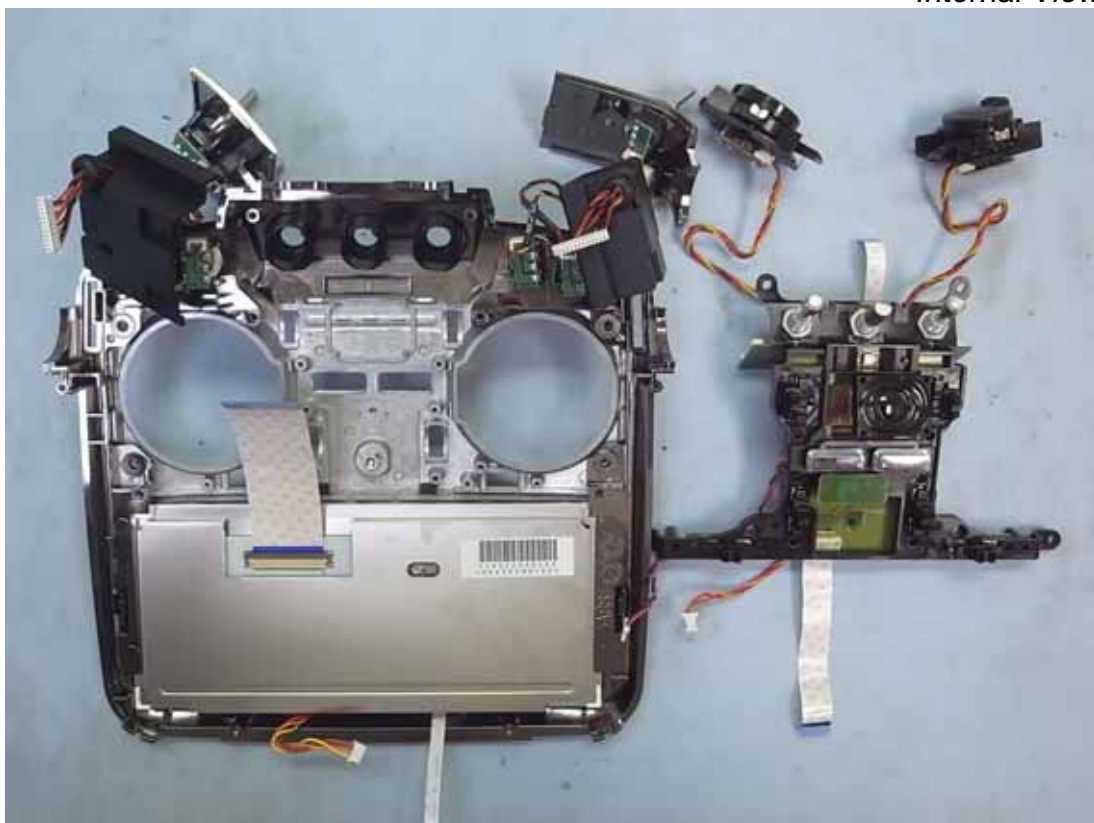


Figure 15  
Internal View

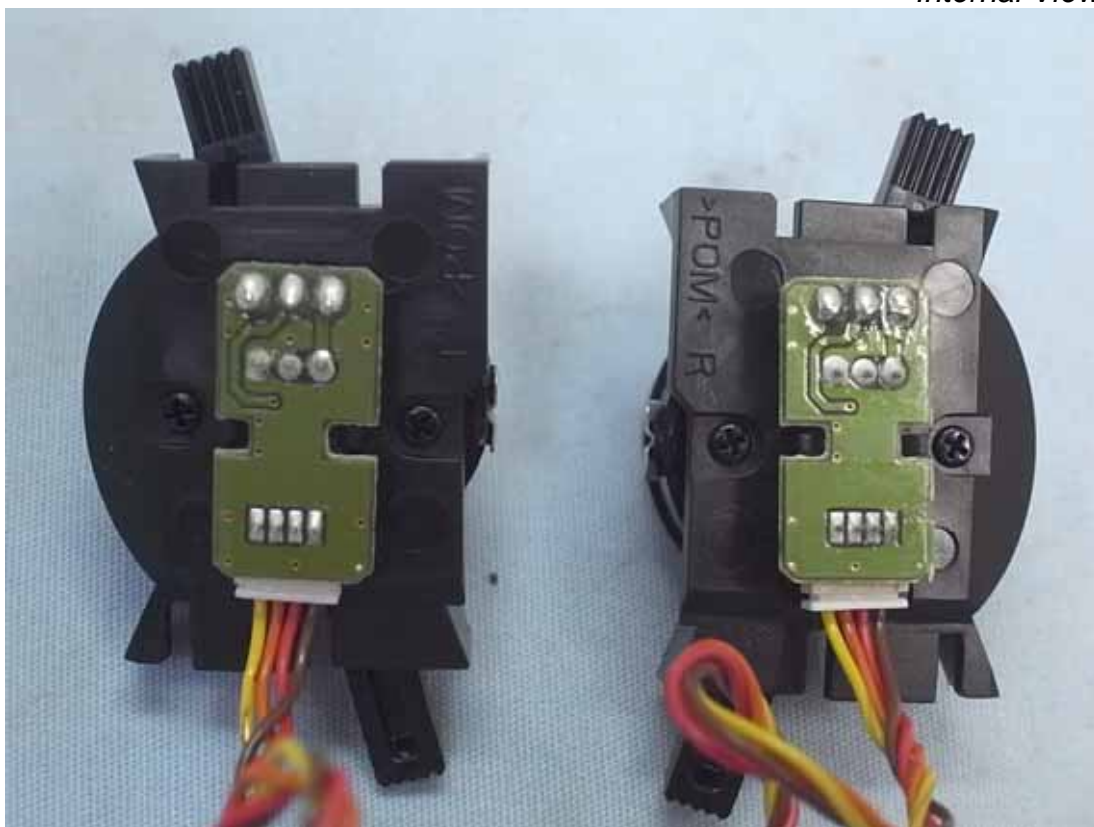


Figure 16  
Internal View

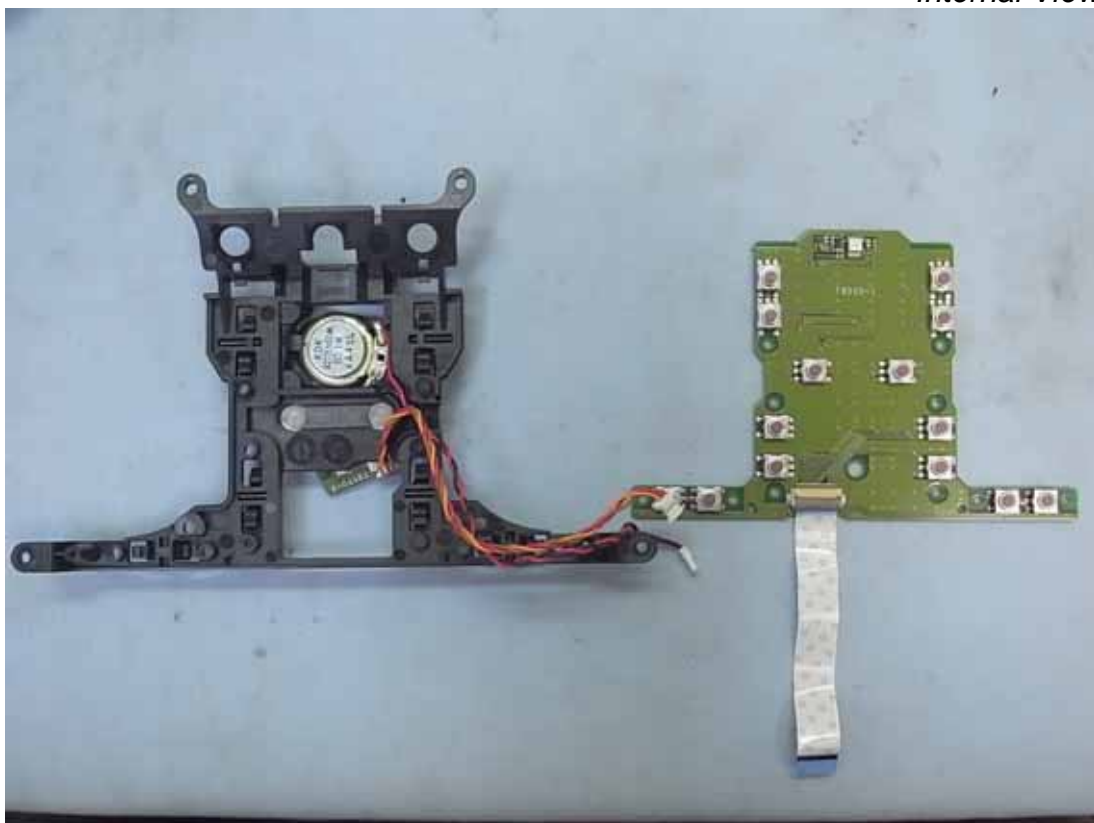


Figure 17  
Internal View



Figure 18  
Internal View





Figure 19  
Internal View



Figure 20  
Internal View



Figure 21  
Internal View (TB55D-10 Board & Camera, Front View)



Figure 22  
Internal View (TB55D-10 Board & Camera, Back View)

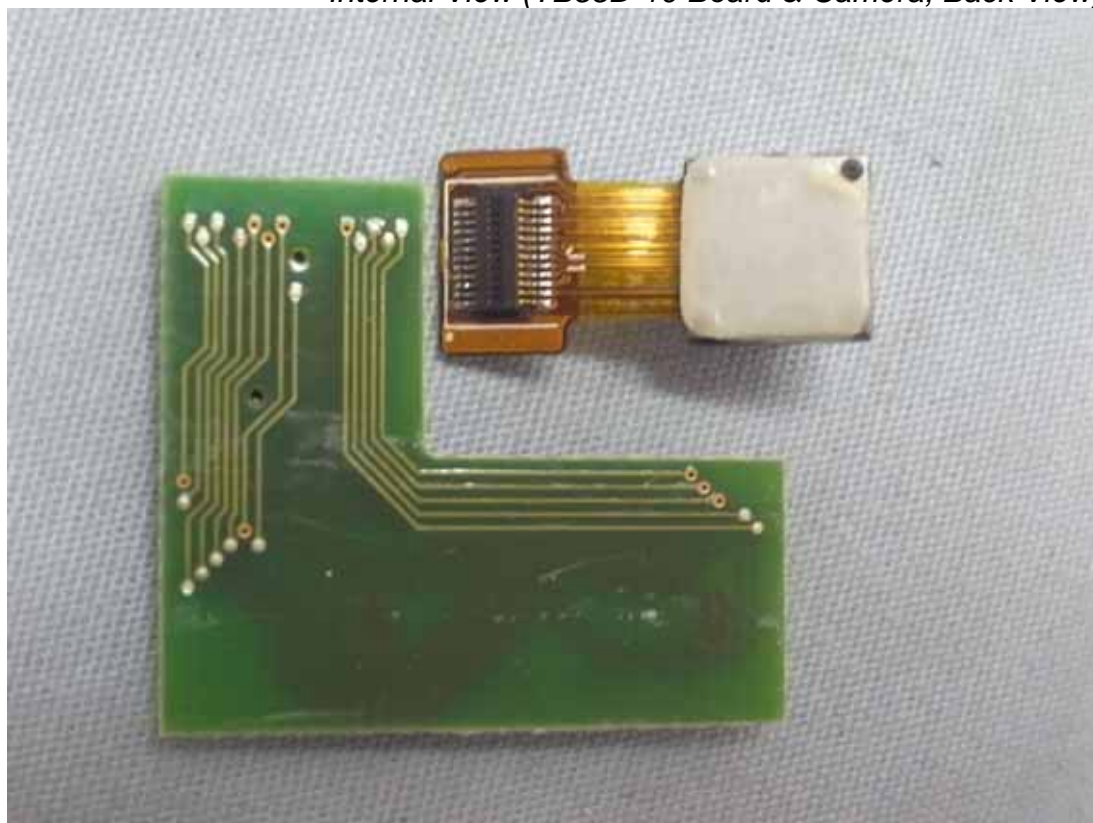


Figure 23  
Internal View (TC09 Board, Front View)

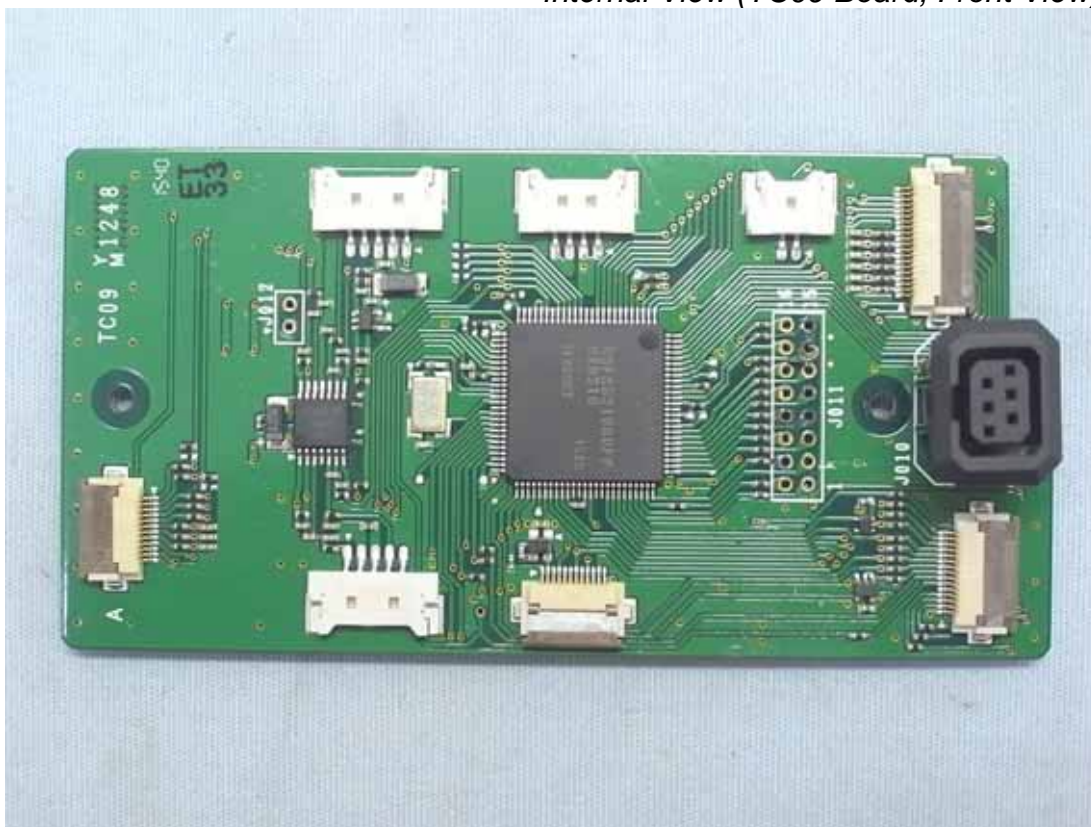


Figure 24  
Internal View (TC09 Board, Back View)

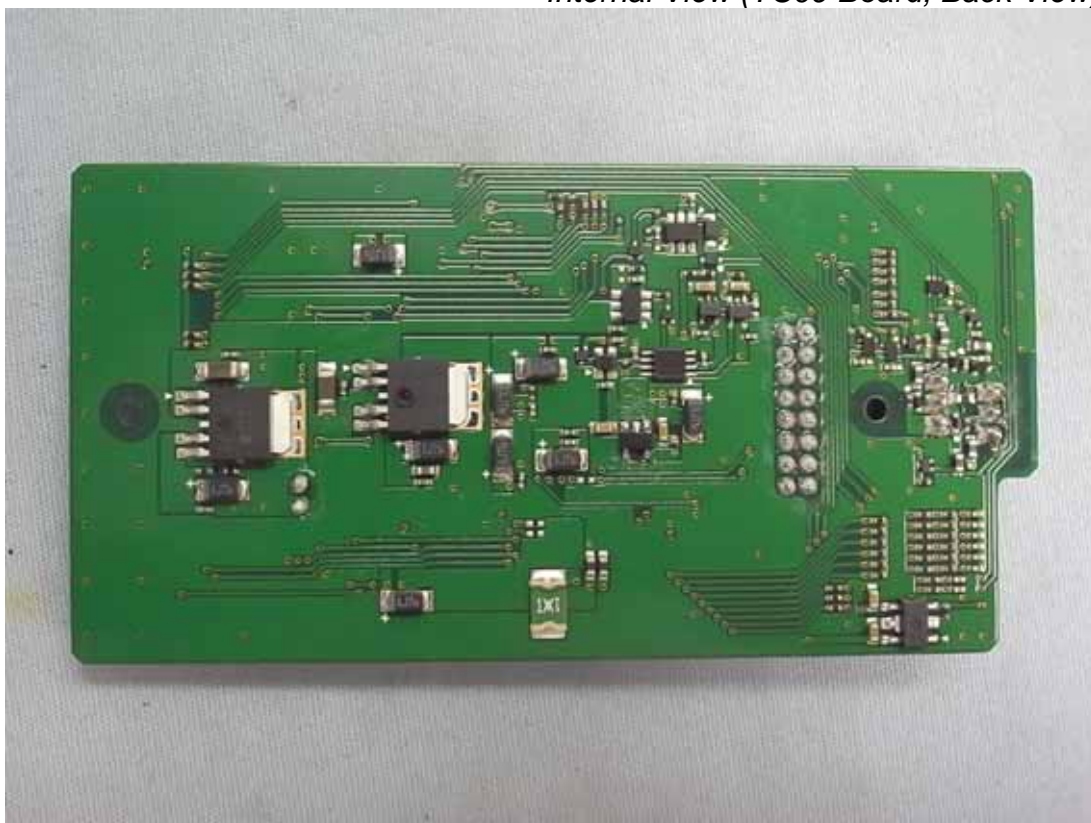


Figure 25  
Internal View (RF Board, Front View)



Figure 26  
Internal View (RF Board, Back View)



Figure 27  
Internal View (Main Board, Front View)



Figure 28  
Internal View (Main Board, Back View)



Figure 29  
Internal View (TB55D-8 Board, Front View)

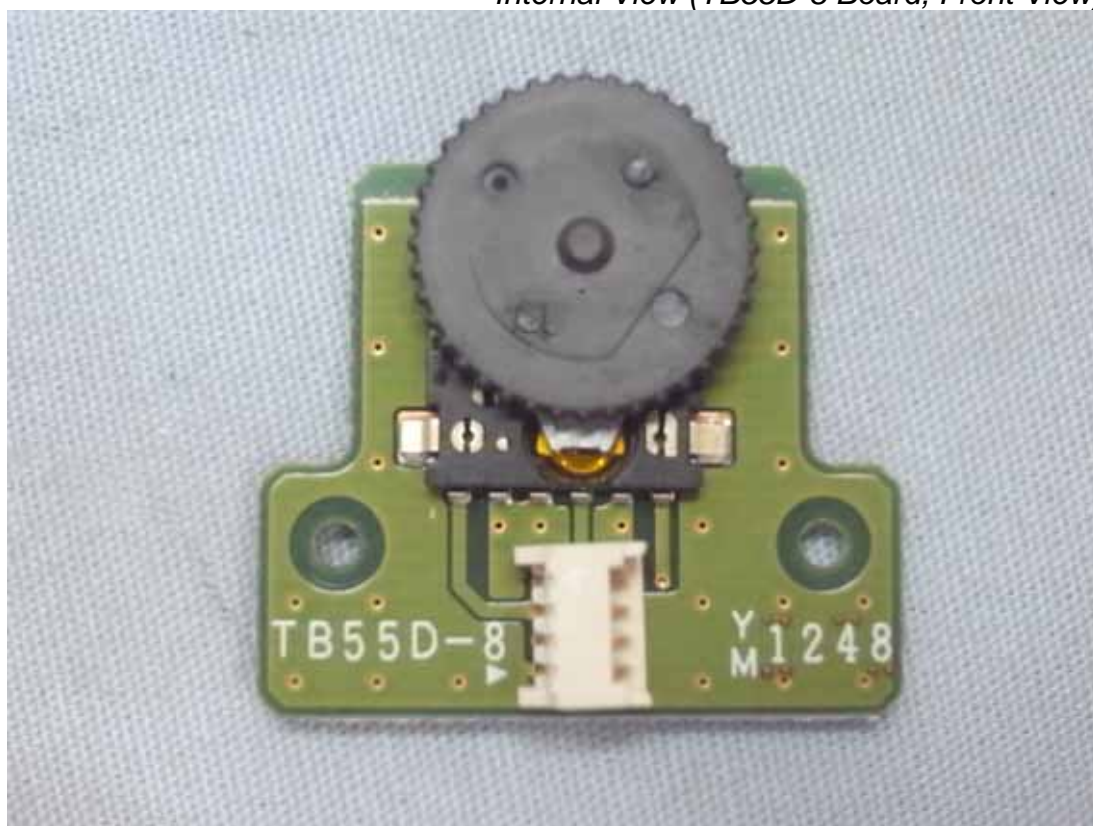


Figure 30  
Internal View (TB55D-8 Board, Back View)

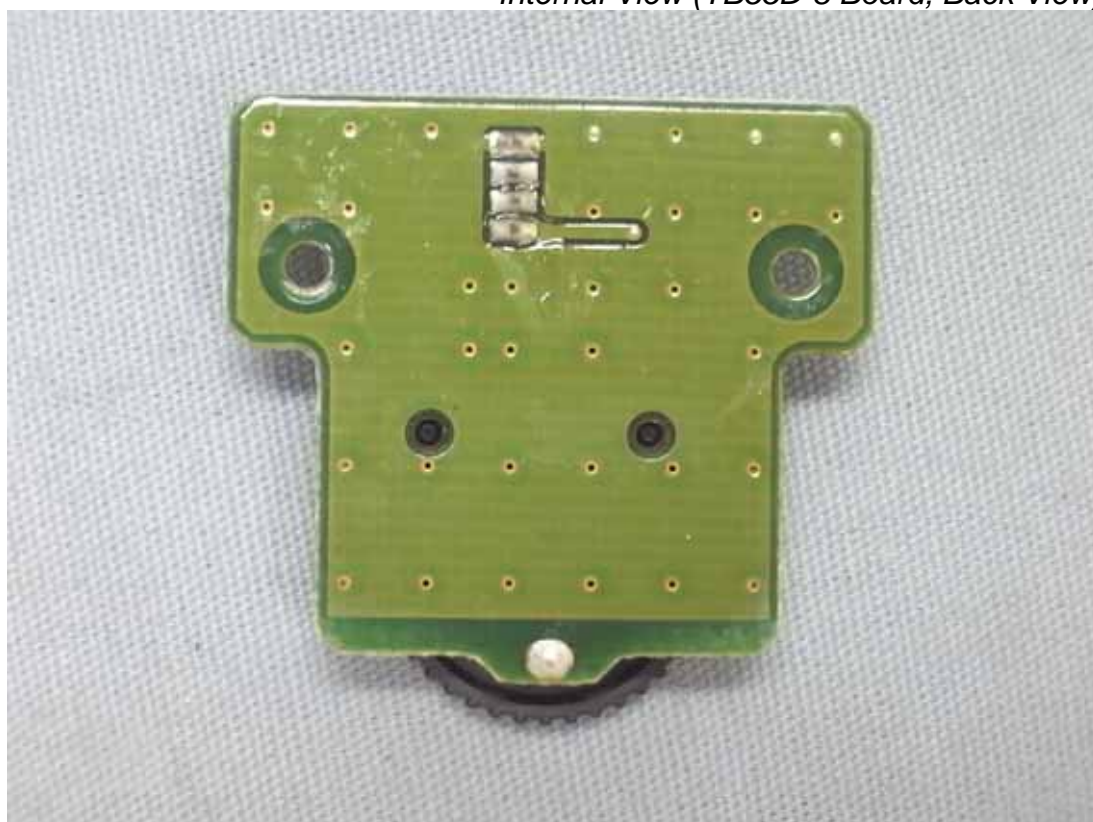


Figure 31  
Internal View (TB55D-2 Board, Front View)

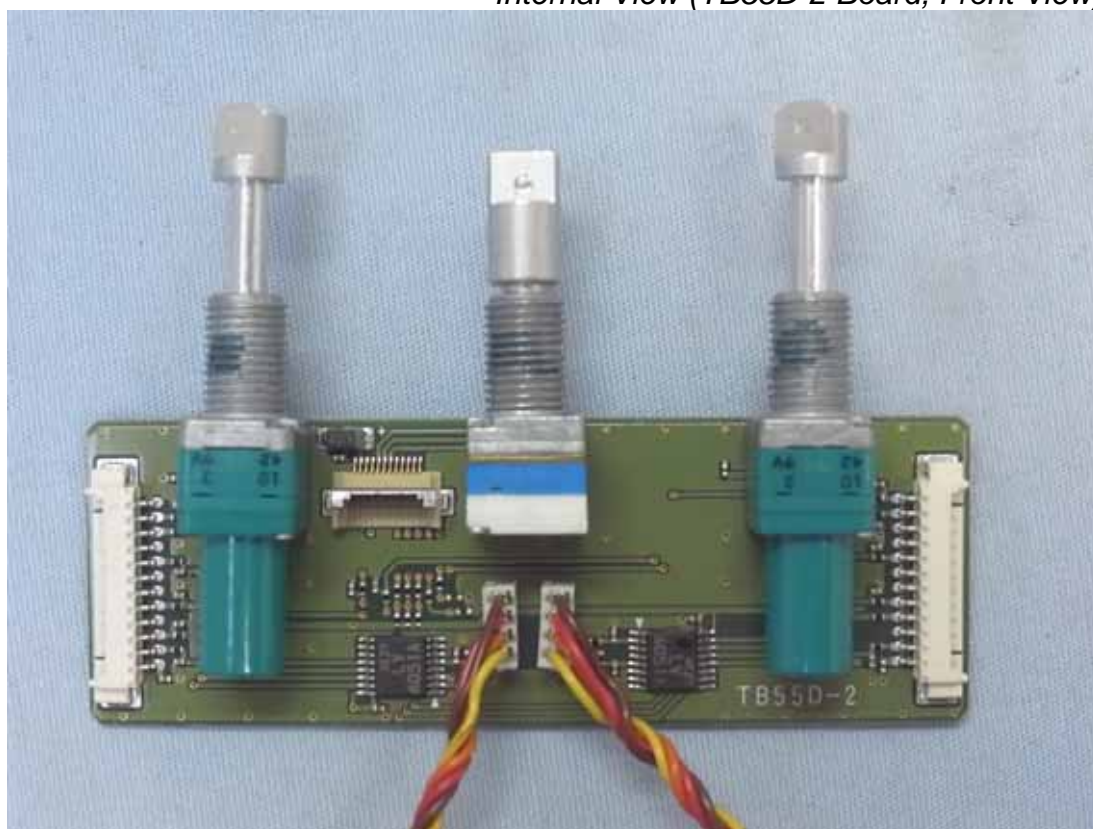


Figure 32  
Internal View (TB55D-2 Board, Back View)

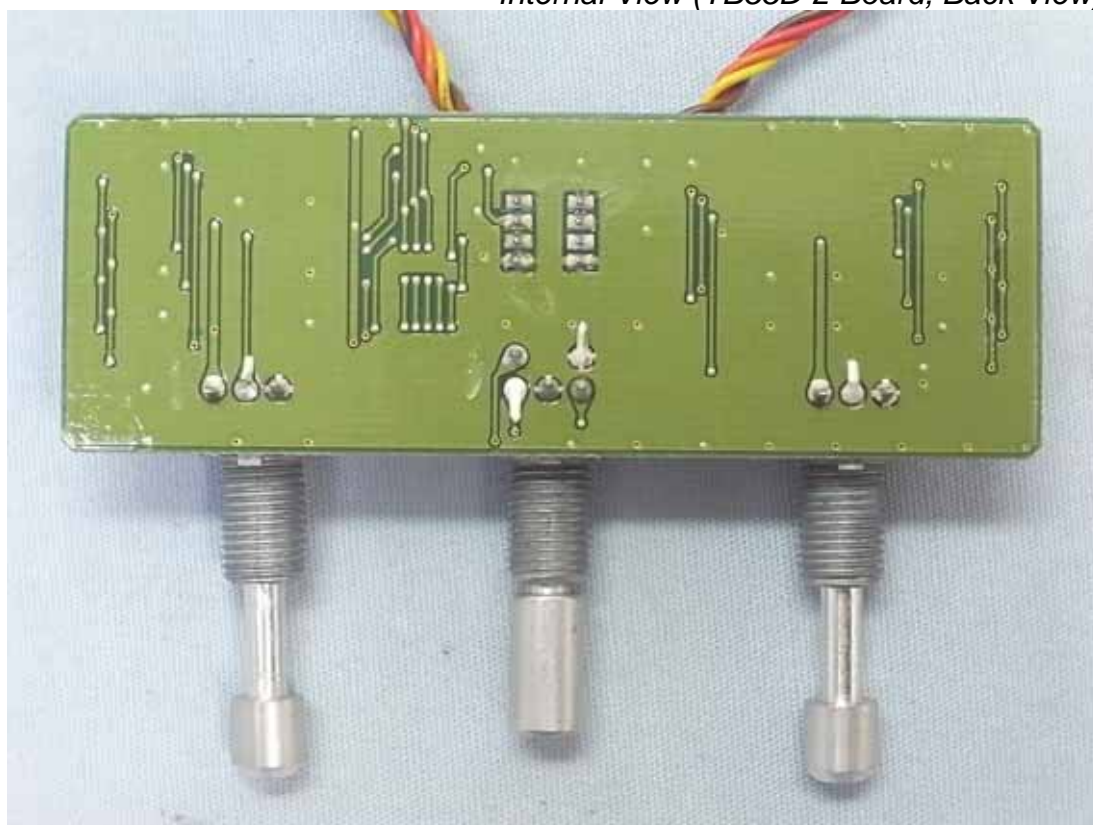


Figure 33  
Internal View (TB55D-1 Board, Front View)

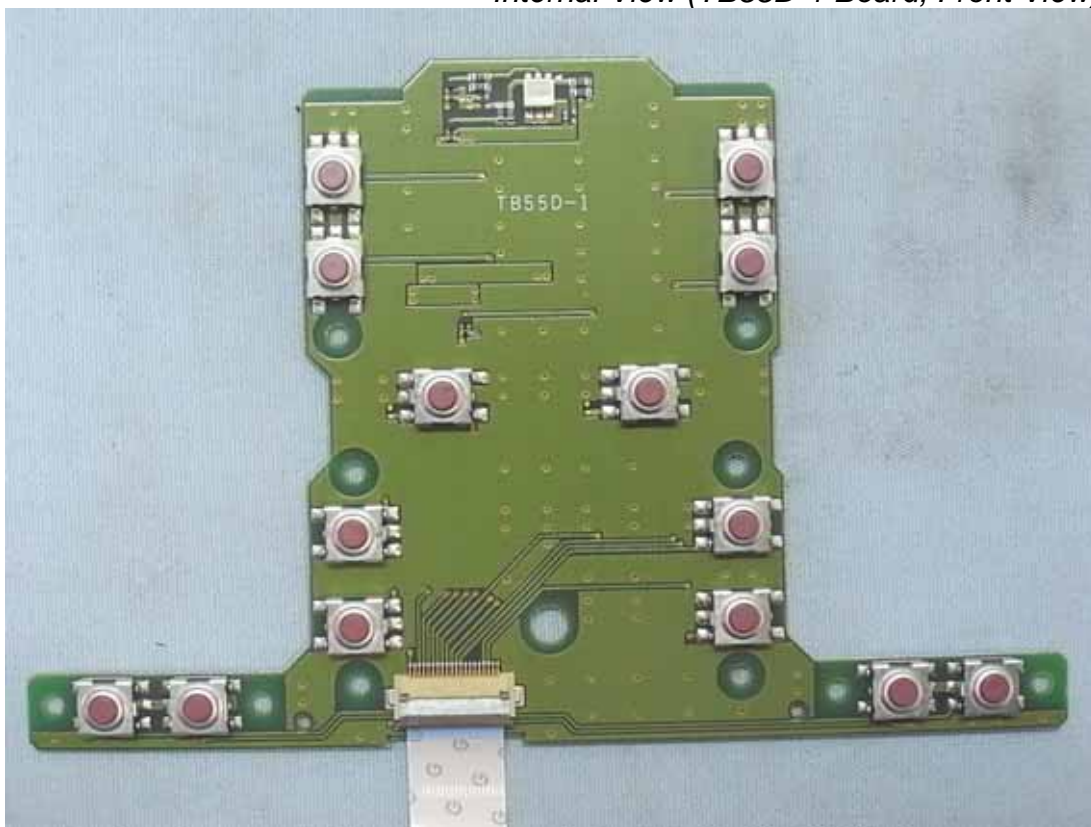


Figure 34  
Internal View (TB55D-1 Board, Back View)

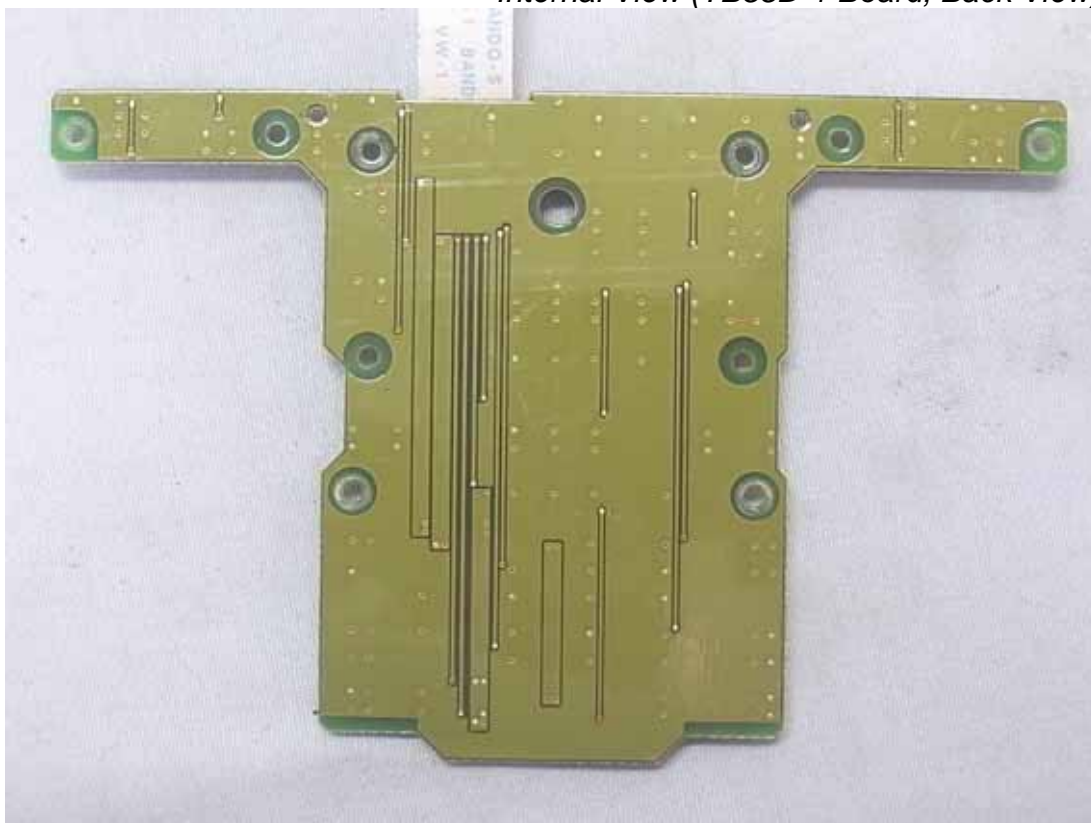




Figure 35  
Internal View (TB55D-9 Board, Front View)



Figure 36  
Internal View (TB55D-9 Board, Back View)

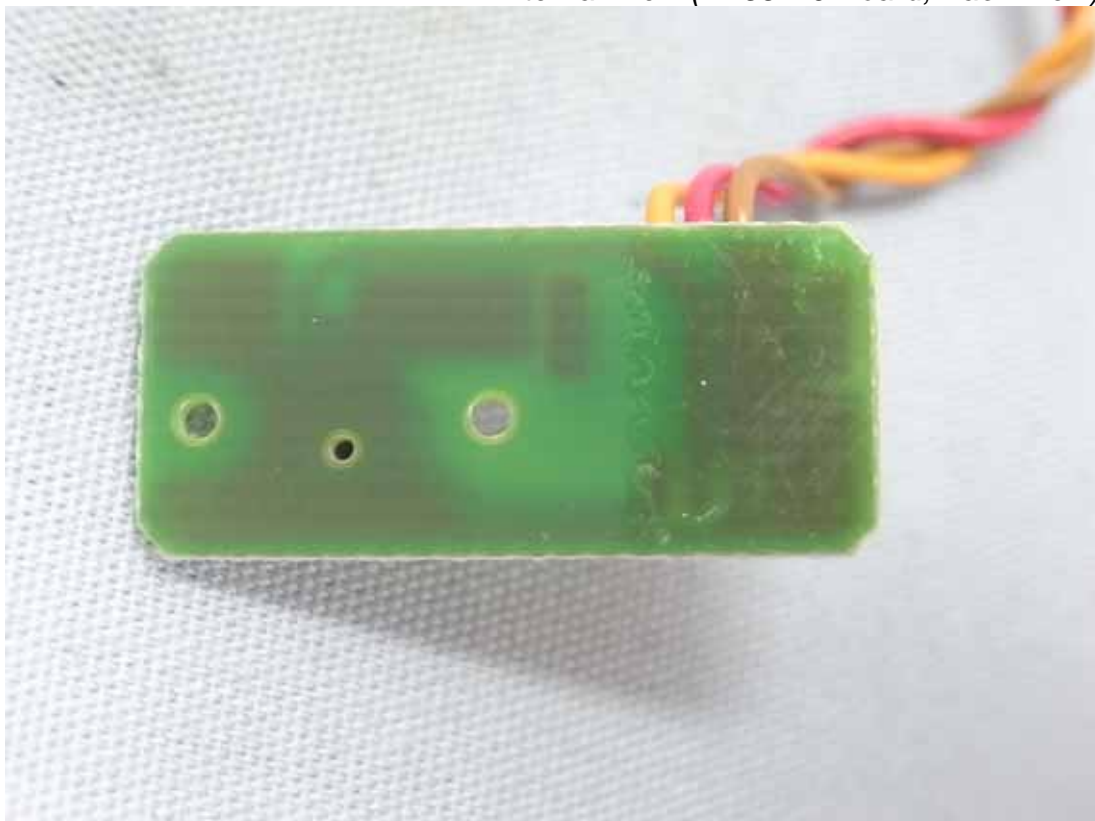


Figure 37  
Internal View (TB55D-7 Board, Front View)

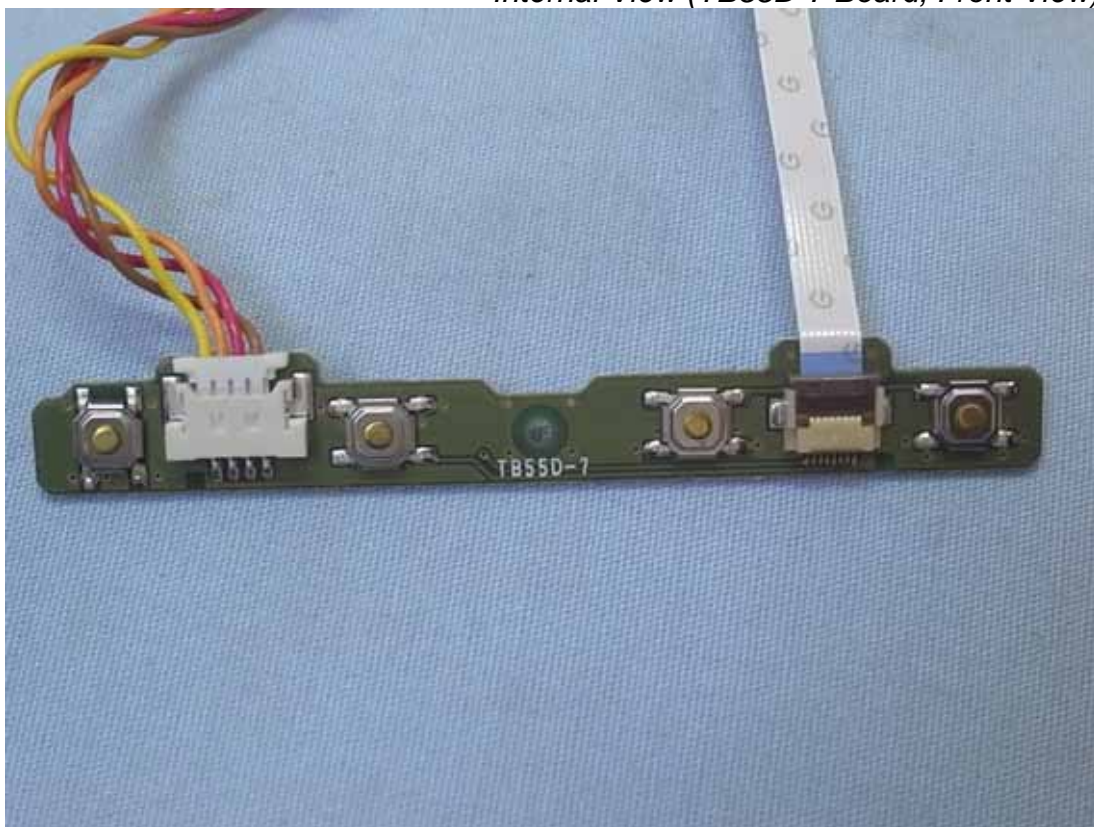


Figure 38  
Internal View (TB55D-9 Board, Back View)



Figure 39  
Internal View (Panel, Front View)



Figure 40  
Internal View (Panel, Back View)



Figure 41  
Internal View (Battery View)



Figure 42  
Internal View (Battery Label View)

